



CONTEMPORARY

#summerscapes SummerScapes 2018

6-29 July

A vibrant
collection
of seasonal
artworks by
25 selected
UK-based
contemporary
artists.

23 Grafton Street,
Mayfair, London W1S 4EY

www.dcontemporary.com

About the show

D Contemporary Gallery is very happy to present its first flagship summer group exhibition. The show will feature more than 100 works of 25 UK based artists, showcasing established artists and best emerging talent in contemporary art.

The exhibition will be a panorama of abstract and figurative art including landscapes, portraits, still lives, cityscapes and rural topographies, architectural designs, everyday scenes capturing life in a variety of expressions. The artists are using a wealth of diverse media, including painting, sculpture and photography. The works showcased have all been chosen for their summery or daily life essence, a celebration of the colour, line and shape.

SummerScapes will run from 6 to 29 July 2018.

Gallery hours are:

Monday – Friday 11.00-18.00,

Saturday 11.00-17.00 and by appointment.

For additional information or sale inquiries please contact Amina Mona at am@dcontemporary.com or 020 7824 1920.

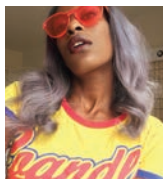
Robert Adam



Robert Adam is a self-taught artist working out of Ruislip, London. Exhibitions and shows include the Camden Arts Centre, Saatchi Art, Elena Shchukina Gallery, Royal Academy of Arts, Flux, D Contemporary, National Portrait, Oxo Bargehouse Gallery et al. The objective of his work is to distort reality and time into an allegorical theme presenting the subject matter in a comprehensive fashion that the viewer may absorb logically. This pictorial language of visual communication then culminates in an orchestration of one piece of work.

Robert's work was included in the Royal Academy Summer Exhibition at aged 21. The reason he paints is a force that was born in me. It is the only time he feels in touch with the origin of his soul, 'I do not question why'.

Farah Bellio



Farah is a young artist based in London, she studied at the Princes Drawing School and graduated from Central St. Martins UAL in 2016. Farah's work encapsulates the raw, playful and energetic nature of the physical act of painting itself. The creation of a painting connects us back to mankind's earliest types of self-expression and that of early stage human development. Often working on multiple paintings at once and using each one as a reference point for the next, Farah will ensure that she only spends about 10 minutes on each piece before moving onto the next as she wants to retain the fresh energy within the piece and not overwork it.

When viewing Farah's paintings, expect to be presented with unusual abstract forms in an array of vibrant and pastel colour pigments. She works with a variety of tools and she wouldn't describe her works as solid statements with a firm narrative but rather a suggestion.

Sophy Bristol



Sophy is a London based artist who explores the visually dramatic effects of certain temporal and atmospheric conditions on otherwise everyday scenes. In her beautifully crafted paintings, light is of predominant interest. In her twenties spent a lot of time painting in the Cape, South Africa and it was there that light became a huge influence on her work.

She has a particular interest in sun shining through trees and refraction of light on water. Sophy holds a BA(Hons) in Fine art from the Surrey Institute of Art and Design.

Sarah Butterfield



Winner of The Artist Magazine Award at the Royal Society of British Artists 2018.

Sarah Butterfield has exhibited at major national and international galleries. Solo exhibitions include, *'Light Catching Fire'* D Contemporary, London (2017), *'Visions of Paradise'* The China National Academy of Art, Hangzhou (2016) & The Cultural Palace of Nationalities, Beijing (2016), *'Light and Life'*, Sui Xuan Art Centre, Shanghai (2014), *'Visions of Gold'* Frost and Reed, London (2012).

Sarah Butterfield was Artist-in-residence at the British Embassy in Paris 2012. In 2006 Sarah was the official tour artist on the Royal Tour made by HRH Prince of Wales to Egypt, Saudi Arabia and India. Sarah received the 2018 The Artist Magazine Award at the Royal Society of British Artists at the Mall Galleries. Sarah's work is in many public and private collections across the world.

David Cottingham



David Cottingham is a London based artist who has developed a unique body of work on the themes of Dance and Landscape Abstraction in the media of Painting, Drawing and Sculpture.

He graduated from St Martin's School of Art in London. His artwork ranges from landscape-influenced, abstract paintings to large figurative, dance-inspired works on canvas and sculpture in Clay and Bronze. He has exhibited internationally including New York, Chicago, London, Beirut and Rome. Commissions include work for Cartlidge Morland in the City of London and work is also held in various private collections worldwide. David is Hon Vice President of the Drawing Society of the Federation of British Artists. Member of Axis and the Riverside Art Group. He says about his work: *"Light moves across a landscape like the dancer moves through space, I am a painter of transient things"*.

David Fawcett



David studied law at Leicester University, started to train to be a Solicitor, gave that up and qualified as a Scrivener Notary because it involved studying foreign languages. Whilst commuting, he put together a small book of typical commuting scenes with captions. He submitted this to the *Evening Standard* cartoon department and working with their cartoonist made a submission to the Arts Editor. The whole experience altered the subject matter of his painting to scenes observed or situations remembered.

During the day he will sketch any ideas/observations in a pad and he will then develop them into a painting. Increasingly the titles of the paintings have also become very important. He enjoys trying to find the words to sum up the situation or convey the scene. If he gets it right, the whole image is enhanced and the impact is far greater.

Sarah Fosse



Sarah Fosse is a contemporary painter with an instantly recognisable style. Her work has featured in the international media including *The Wall Street Journal*, *Vogue's World of Interiors*, and the BBC. Sarah has been painting her whole life, having inherited her artistic ability from her mother, a professional artist and her grandfather. Her work has been exhibited extensively throughout Europe. Thanks to a recent successful solo show in London and an ever-increasing online following she is able to boast private and corporate collectors across Europe, North America, Asia and Australia. Having always lived near water (be it coastal or river) Sarah has a fascination with its movement, reflections and energy, which has also inspired her unique style. Now working and living in London, Sarah uses her adopted home city and the travel it affords her as the inspiration for her work. London, New York, Hong Kong and Paris all feature regularly within her portfolio.

Roger Hooper



Photographer Roger Hooper is passionate about wildlife and the environment. He has photographed many extraordinary aspects of our planet and has travelled to all seven continents. He sees photography as a way of informing others of the frailty and beauty of the world around us, and of highlighting the need to preserve our wildest environments and our most endangered species.

All proceeds from sales will be donated to Hoopers Africa Trust, a charity founded by Roger Hooper to transform the lives of disadvantaged girls in Kenya by providing secondary and university education.

www.hoopersafricatrust.org

George Irvine



George Irvine, Cotswold-based artist, is both painter and photographer. Being the youngest exhibitor, in 1988 he participated in the Royal Academy Summer Exhibition. Having studied at the prestigious Slade School of Fine Art and exhibited across the country, Irvine works with a variety of medium and is well known for his unique painting style, incorporating strong brush work and skilled use of bright colours. His paintings, often depicting his proud sense of Oxfordshire terroir, demonstrate his passion for painting and uncanny ability to depict the true essence of his subject.

When painting, he works within a variety of genres including Still Life, Landscape and the Figure. Painting is also a vehicle for him to explore more abstract qualities. His solo exhibition in 2002 was followed by teaching at Bicester & Stowe School. Since 2012 he continues with studio practice.

James Kerr



Although not formally trained, James painted all his adult life and have built an enviable reputation for gutsy semi abstracted work over the years. He quotes Ralph Steadman to express why and what he paints: *'The paint itself is also an object - it is subject to its own motivation, rules and dynamic which the artist must overcome, ignore or amplify'*.

James uses in oil on board, working from pencil sketches which he then completes in his studio. Most of his work is sold through *'The British Art Portfolio'*, Little Buckland Gallery, Broadway, and The Stour Gallery in Shipston on Stour. When not painting he works as a landscape, architectural and garden photographer. Current projects include *'Silent Landscape'* a coffee table book on the battlefields of the Great War, published by Helion and a sequel coming out in June 2018 *'Silent Landscape at Gallipoli.'*
www.jameskerr.co.uk

William Mackesy



William paints what he finds interesting, which results in a very varied body of work, figurative through to abstract, in a variety of mediums. He is seeking to get beyond the appearance and presentation of things to find an essence or resonance, his subjects range from the human form to light, to landscape, to "very still" lives. While his work is still mainly based on contemplation of the real and physical, it now includes metaphorical depictions, meditations, "pretty words", abstract colour play and forms of optical art.

William studied classics and law at Oxford University, but since quitting his legal career in 2000, he has been painting, drawing, travelling and writing. He studied at the Slade, Prince's Drawing School and the London School of Painting and Drawing. He now lives in west Oxfordshire with his wife and two sons.

Harry Parker



Harry Parker was educated at Falmouth College of Art, University College London, and was a postgraduate at the Royal Drawing School. He joined the British Army when he was 23 and served in Iraq in 2007 and Afghanistan in 2009 as a Captain. He is now an artist and writer and lives in London. His novel *Anatomy of a Soldier (Faber)* was published in 2016.

These works are based on drawings he made during walks through London. He then re drew and painted in the studio from multiple sketches, adding memory and re-imagining the journeys.

Bryn Parry OBE



Bryn Parry OBE is one of the UK's best-known countryside cartoonists. His work has been published in twelve books, illustrated magazines, is used on a wide range of stationary and gift products and his bespoke commissions hang in the finest looses in the land.

After a nine-year 'sabbatical' co-founding and running the charity Help for Heroes, Bryn is back in his studio and has turned to sculpture. His '*Looking Forward*' triptych of a wounded soldier won the Armed Forces Art Society sculpture prize in 2017. The Adjutant General's Corps commissioned his '*Four Lions*' as a silver table centrepiece. He is now working on a series of uniquely '*Bryn*' animal sculptures.

Mark Pearson



PHOTOGRAPH: ISROBERTO

Mark trained at the City & Guilds of London Art Schools, London and he took a three year Post Graduate Diploma at the Royal Academy Schools. At the Royal Academy he was awarded college and national prizes, along with travelling scholarships to Barcelona and Madrid. After graduating Mark lived in New York for several years, returning to London in the 1980s. He has painted professionally for over thirty years, selling his work to a growing number of private and corporate patrons and collectors in the UK, USA, Switzerland, Australia, Europe, Japan and Morocco. Mark's work is strong contemporary figurative painting; the key elements in his pictures are light, space and movement. His central subjects are cityscapes and landscapes document the ever-changing London skyline along with compositions where people are interacting with each other in public places.

www.markpearsonartist.com

William Pierce



Will Pierce studied at the Royal Drawing School after graduating from Canterbury Christ Church University. His work explores people in different settings, including street scenes and stations, capturing the movement of people and the grime of the London transport system. He finds the continual transformation of the metropolis a huge source of inspiration. He works in a range of media, including pen, charcoal, oil paint and print.

Annabel Playfair



Annabel trained at The City and Guilds of London Art School, Chelsea School of Art and a year studying the human form at L'Ecole des Beaux Arts in Paris.

Annabel's creative mind is constantly on the go, finding new inspiration every day, seeing a new painting wherever she looks. She likes to paint 'en plein air' and is particularly inspired by the work of Post Impressionists with their use of colour and composition. She would describe her style as 'figurative and energetic'.

She lives in Warwickshire and is represented by the Fosse Gallery in Stow-on-the-Wold, Glocs. for whom she is currently working towards her next solo show in September 2019. She also has work with the Russell Gallery in Putney.

annabelplayfair@me.com
www.annabelplayfair.co.uk

Doug Scott CBE



Doug Scott has made 45 expeditions to the high mountains of Asia. He has reached the summit of 40 peaks, of which half were climbed by new routes or for the first time in Alpine Style. Apart from his climb up the South West Face of Everest with Dougal Haston during Chris Bonington's Expedition of 1975, he has made all his climbs in lightweight or Alpine Style, without the use of artificial oxygen. He has reached the highest peaks on all seven continents – 'the seven summits'.

Doug is also a remarkable photographer. His body of photographic work is notable for the way it captures the beauty of the world's highest mountains and most remote views. The quality of this work has been recognised by the art world and Doug had a ground-breaking exhibition where he exhibited for the first time black and white.

Michael Sofroniou



Michael trained at Camberwell School of Art after completing a degree in English Literature at Keble College Oxford and has worked as a fulltime artist since 1987 based in the Cotswolds and the Midlands exhibiting in galleries throughout Britain.

Michael's work is usually based on direct observation. He either works immediately in front of a subject or from drawings and studies done on the spot. Colour, shape and pattern arise as a visual interpretation of the subject. A painting may be worked and reworked to incorporate changes of mood, light and atmosphere until the piece takes on its own life or it may be produced in a single session as an immediate response to a moment in time.

Meera Solanki



Meera Rose Solanki is a young and upcoming artist. Born and raised in North London, she is currently based in Brighton, where she is studying a BA(Hons) in Fine Art. Fascinated with depicting people, her work takes the forms of evocative paintings and dynamic marker drawings. She strives to capture fleeting moments and the essence of a subject's character in her portraits.

Her style takes on a caricature and grotesque appearance at times, straddling the border between fine art and illustration as she renders expressive stylised characters. Initially inspired by a desire to place portraiture into a cityscape environment, she explored narratives of characters living in the city during summertime. Self-portraiture is a vital element of these works – Meera embodies and photographs herself as the character, and then goes on to paint their physical form, maintaining a physical link between artist and artwork.

Richard Tait



Richard Tait is a painter and art tutor who has been based in London for twenty-six years and has documented the City skyline in oil paint for the last eighteen years. Richard's work explores the historical and modern aspects of the ever- changing London skyline, and his cityscape paintings are a visual response to the movement and colour reflecting the vibrancy of the metropolis. Richard depicts the City both during the daytime, and at night when the colour fades and the dazzle of the light pollution takes over.

Richard is a Freeman of the Worshipful Company of Painter-Stainers and was awarded the Freedom of the City of London in 2007; he is also an Artists Fellow of Bermuda. Richard shows every year with the Painters Decorative and Fine Art Society and this October is the Artist in Residence at Painters Hall in the City of London.

Caroline Thomson



Caroline Thomson is an artist and MA Fine Art graduate of Chelsea College of Art (2003) and BA Fine Art graduate of Kingston University (1998). Caroline's fluid and gestural landscape paintings explore the notion of the woods as a liminal space, a place of retreat, transformation or psychological threshold.

Caroline has exhibited nationally. Selected group exhibitions include shows at The Harley Gallery, Menier Gallery, Seven Seven, The Residence and Art Sway. She has her first solo exhibition at Intercession Gallery, Northampton (July 2018) and will be part of a group painting show at D Contemporary, London (July 2018). Her work has been shortlisted for prizes including NOA and JOPP and her work has been selected for the Lynn Painter Stainers Painting Prize (2018). Her work is held in numerous private collections nationally.

Luke M. Walker



Winner of the Signature Art Prize for Painting 2015, Luke M Walker is an Architecturally trained Interior and Spatial Designer who lives and works in London.

As with most cities, London is in a constant state of change and it is this transience that Walker aims to examine in these works. As a painter and walking artist who has spent much of the last ten years exploring the streets of London.

From a lofty position on some of the city's highest landmarks, from Vauxhall, to St Pauls, to The Sky Gardens, Walker paints the fluid nature of the city as it morphs its way along the Thames. Transience is expressed from the singular perspective of one of its current citizens and in the complex, physical structures of the city itself.

Michael Wallner



Michael has spent more than twenty years in the media industry. However, creating original and innovative art is his true passion. He now works out of Wimbledon Art Studios. His latest collection celebrates the beauty of the city through the shapes, outlines and colours that define its character. New York, London, Hong Kong, Paris, Singapore, Miami, and Dubai all featured in his portfolio. The art is created by digitally manipulating and painstakingly colouring his own photographs on a graphics tablet to produce art on usual materials. He works with brushed aluminium, reclaimed wood, brass, even 1930's windows. He also creates neon, magnetic, and L.E.D installations. Michael is constantly on the lookout for the most unusual views, angles and shapes for his work. Much of his art is created from aerial photographs, taken while hanging out of helicopters.

art@michaelwallner.co.uk
www.michaelwallner.co.uk

Philip Williams



Philip Williams is a London based artist working as a painter, printmaker and sculptor. His work explores the representation of familiar scenes, everyday experience and commonplace objects.

Philip graduated from Central Saint Martin's art school in 2016. He is a winner of the Hollyport Prize and the Clyde & Co. Award for graduating artists from London schools. He has exhibited in exhibitions around the UK and his work is held in collections in the UK and America.

Melanie Wright



PHOTOGRAPH: LESLIE SMITHERS

Melanie was raised in North Yorkshire, in a family of artists and keen riders. After graduating from The Heatherleys School of Fine Art, where she studied portraiture and life painting, Melanie ran a painting studio in London, before moving to The Cotswolds. She enjoys working with and drawing inspiration from both the landscape and equestrian related subjects, such as horse racing, polo and dressage. She seeks to explore an essence of place, without nailing it down while leaving her impression with room to breathe. She finds watercolour to be the perfect medium, with its fluidity and white negative spaces of paper balanced against the reflective deeper toned washes and transparent glazes of paint. From 2014 -2016 Melanie was Artist in Residence at Charlie Longsdon's National Hunt Training Yard in Oxfordshire. This year she is delighted to have been invited as Artist in Residence in Newmarket by the British Racing School.

Robert Adam



Cardinal Sins (Catamite)

Canvas on Board - Framed

60 x 50cm

£7,500

Robert Adam



Cricket Bats

Oil on Canvas - Framed

107 x 82cm

£14,000

Robert Adam



The Devils Dance, (Edith Eva Eger - Auschwitz)

Oil on Canvas - Framed

60 x 50cm

£8,000

Robert Adam



Thirst for Hirst (Meretricious)

Oil on Canvas - Framed

60 x 50cm

£8,000

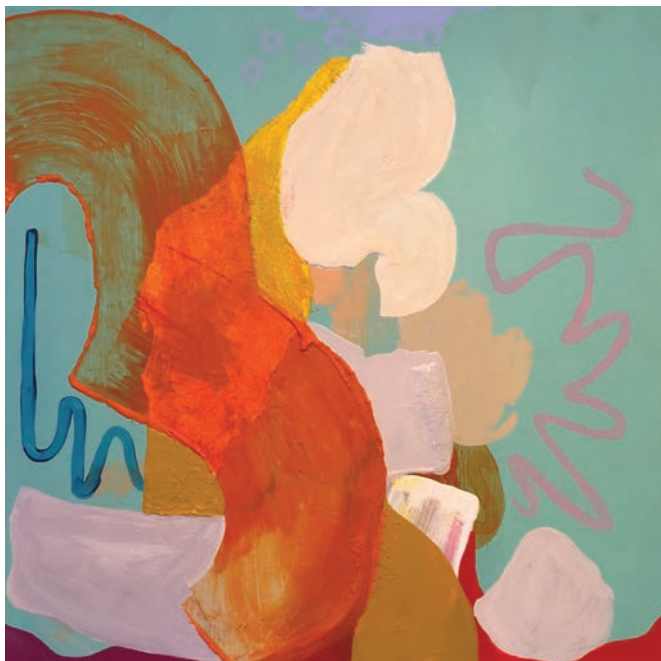
Farah Bellio



'Untitled' 2018

Acrylic, Oil Pastel, Wax, Tea, Spray Paint,
Watercolour on Gesso Primed Plywood - Framed
60 x 60cm
£620

Farah Bellio



'Untitled' 2018 (2)

Acrylic, Oil Pastel and Polyfiller on Gesso Primed Plywood -
Framed
60 x 60cm
£620

Farah Bellio



'Untitled' 2018 (3)

Ink and Tea on Cold Pressed Paper - Framed

29.7 x 21cm

£350

Farah Bellio



'Untitled' 2014

Watercolour and Oil on Paper - Framed

14.8 x 21cm

£280

Sophy Bristol



Sussex Summer Sea

Oil on Canvas - Framed

50 x 50cm

£800

Sophy Bristol



Summer Lake

Oil on Canvas - Framed

50 x 50cm

£800

Sophy Bristol



Dark Sparkly Dorset Sea

Oil on Canvas - Framed

65 x 65cm

£950

Sophy Bristol



Fossil Hunting Spotty Sea

Oil on Canvas

65 x 65cm

£950

Sarah Butterfield



Cocoa Beach Hotel: morning

Oil on Board

15.3 x 20.3cm

£1,500

Sarah Butterfield



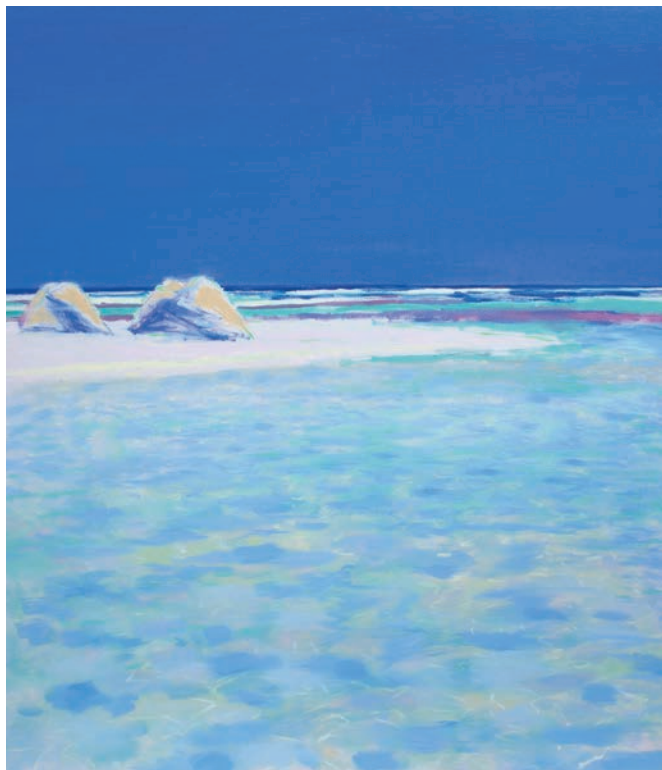
Morning light at Newcomb Hollow Beach

Oil on Board

17.5 x 28cm

£2,100

Sarah Butterfield



Ocean's margin: light at midday

Oil on Canvas

121 x 106cm

£6,900

Sarah Butterfield



Ocean's margin: afternoon light

Oil on Canvas

121 x 106cm

£6,900

Sarah Butterfield



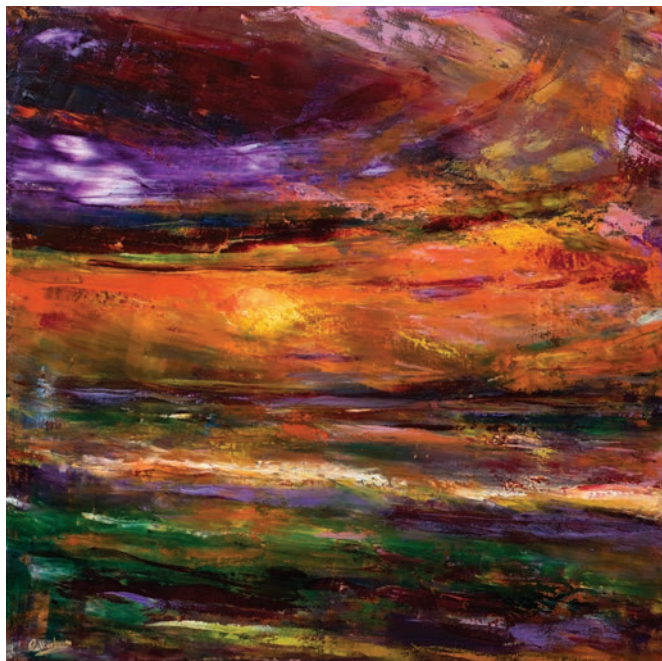
Cocoa Beach Hotel: midday

Oil on Board

12.5 x 17.7cm

£1,140

David Cottingham



At the Waters' Edge

Oil on Canvas

80 x 80cm

£1,920

David Cottingham



Australian Sunrise Diptych

Acrylic on Canvas

120 x 60cm (two panels 60 x 60cm)

£1,600

David Cottingham



The Golden Season - A Dance Series Painting

Acrylic on Canvas

100 x 80cm

£1,440

David Cottingham



The Golden Web

Unique Sculpture in Clay and Metal

£2,400

David Fawcett



Making a concerted effort not to catch my boss up

Acrylic on Canvas

91 x 91cm

£1,200

David Fawcett



Man talking loudly about Jesus

Acrylic on Canvas

80 x 80cm

£1,200

Sarah Fosse



Heading Home

High Definition, High Gloss Ink Limited Edition Print on Aluminium

Edition 20/25 - Framed

42 x 42cm

£425

Sarah Fosse



St Paul's Illuminations

High Definition, High Gloss Ink Limited Edition Print on Aluminium

Edition 2/25 - Framed

42 x 61cm

£595

Sarah Fosse



The Shard

High Definition, High Gloss Ink Limited Edition Print on Aluminium

Edition 26/25 - Framed

42 x 72cm

£595

Sarah Fosse



Call Me

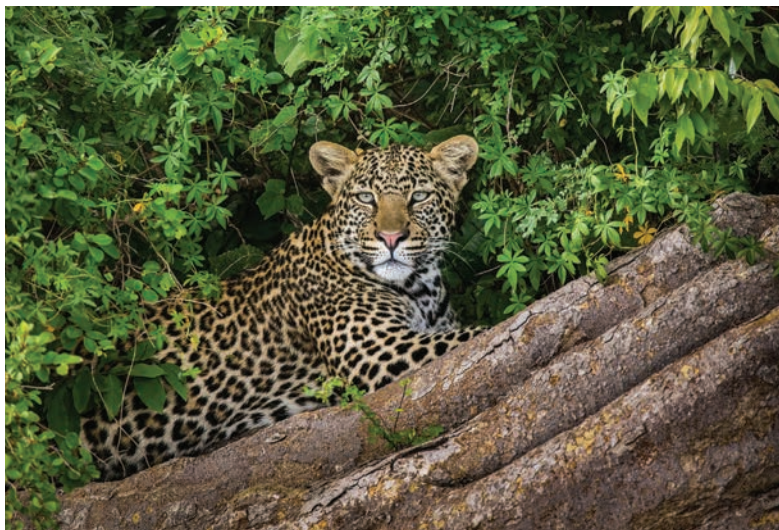
High Definition, High Gloss Ink Limited Edition Print on Aluminium

Edition 3/25 - Framed

42 x 52cm

£525

Roger Hooper



Leopard, Masai Mara, Kenya

Limited Edition of 50, Images Mounted onto Aluminium

60 x 40cm

£650

Roger Hooper



Tiger, Pench NP, MP, India

Limited Edition of 50, Images Mounted onto Aluminium

60 x 40cm

£650

Roger Hooper



Leopards, Masai Mara, Kenya

Limited Edition of 50, Images Mounted onto Aluminium

60 x 40cm

£650

Roger Hooper



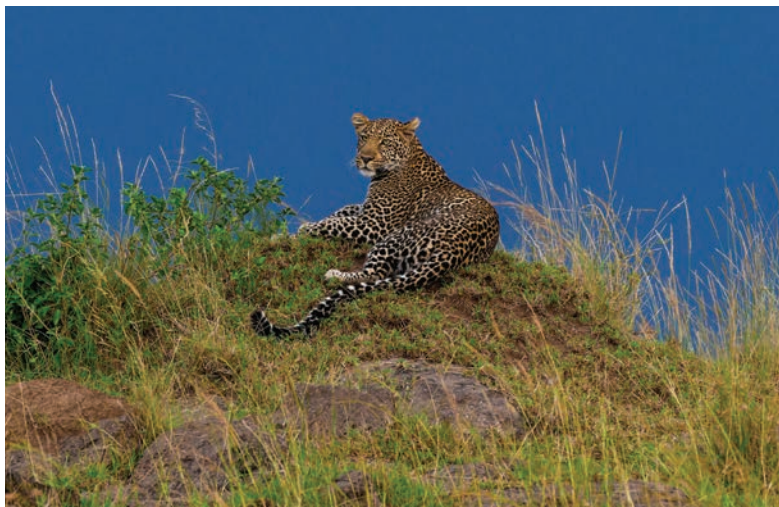
Lion Cub, Masai Mara, Kenya

Limited Edition of 50, Images Mounted onto Aluminium

60 x 40cm

£650

Roger Hooper



Leopard, Masai Mara, Kenya (L)

Limited Edition of 50, Images Mounted onto Aluminium

150 x 96cm

£1,200

George Irvine



Evenlode Valley

Oil on Canvas

100 x 150cm

£5,800

George Irvine



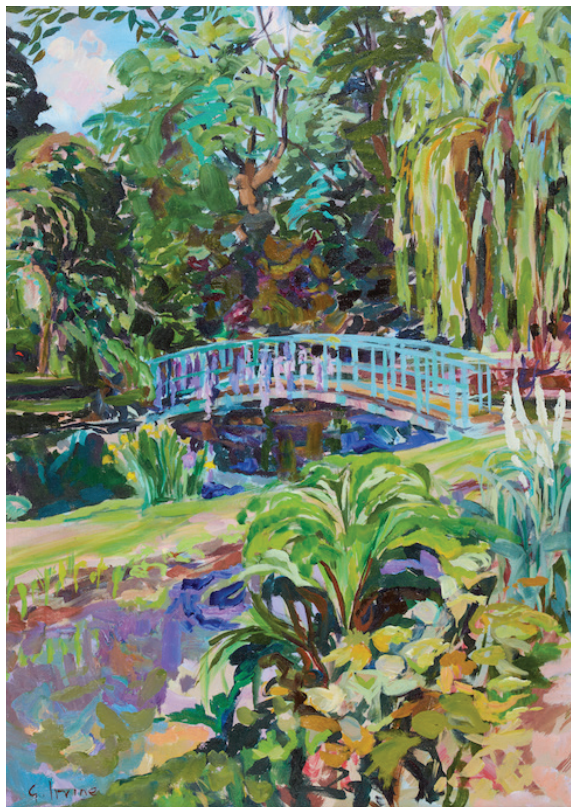
Thenford Covered Walk

Oil on Canvas

60 x 83cm

£2,500

George Irvine



Thenford Gardens III

Oil on Canvas

83 x 60cm

£2,500

James Kerr



After breakfast

Oil on Board

71 x 55cm

£1,560

James Kerr



Black bottle on table

Oil on Board

71 x 55cm

£1,560

James Kerr



Still life with coffee pot

Oil on Board

71 x 55cm

£1,560

James Kerr



Crowded table

Oil on Board

71 x 55cm

£1,560

James Kerr



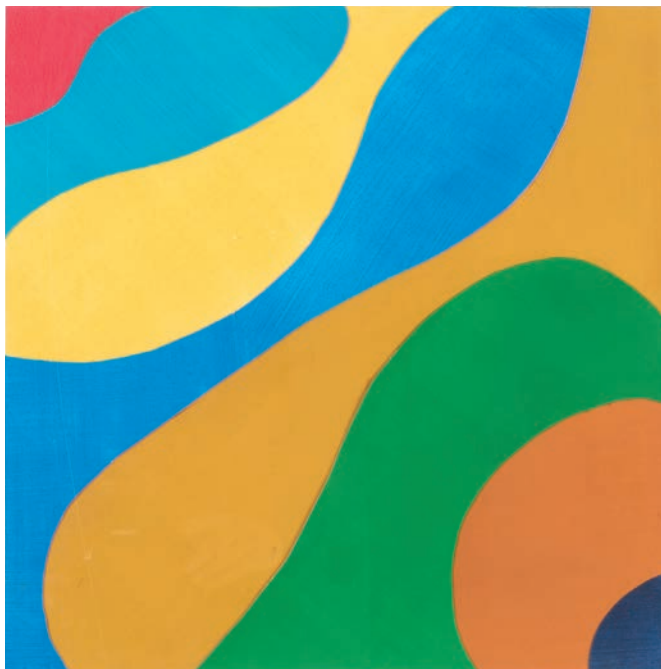
Yellow table

Oil on Board

71 x 55cm

£1,560

William Mackesy



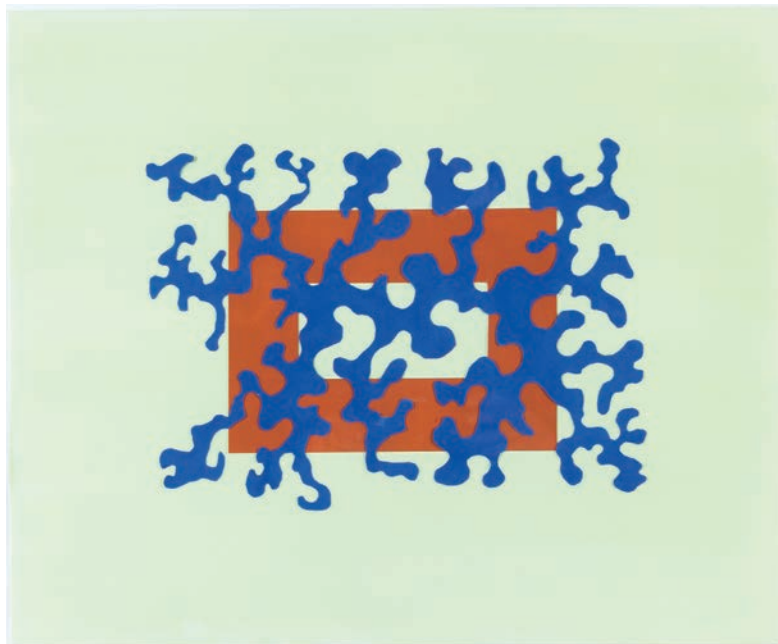
Swirl

Gouache on Paper

66 x 67cm

£1,450

William Mackesy



Composition II

Gouache on Paper

62 x 53cm

£1,250

William Mackesy



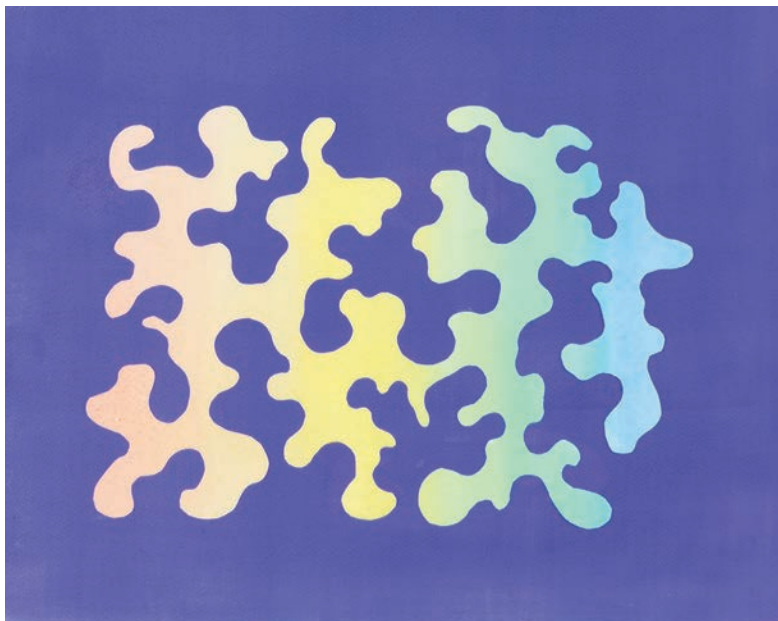
Tropical

Gouache on Paper

58 x 54cm

£1,300

William Mackesy



Squodge II

Gouache on Paper

69 x 60cm

£1,100

Harry Parker



Gasometer
Charcoal on Paper
50 x 50cm
£560

Harry Parker



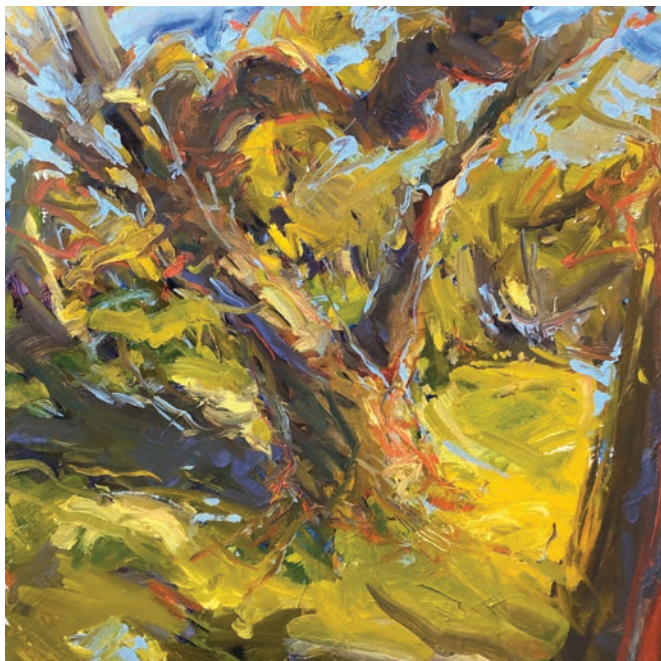
Park Bench

Oil on Canvas

100 x 100cm

£2,400

Harry Parker



Tree 2

Oil on Canvas

50 x 50cm

£640

Bryn Parry OBE



Bear Boarder

Bronze Limited Edition of 12. Number 3/12. Orders taken.

30cm high

£4,500

A snowboarding Polar bear; and why not?

'I love the weight in the bear's lower body which gives this piece its dynamic curves and movement. The bear has been patinated with white oxide and ferrous nitrate to give it a creamy hue while the base is colder, leaving the board as polished bronze.'

Bryn Parry OBE



Fender Frog, Bizarrely

Bronze Limited Edition of 12. Number 1/12. Orders taken.

40cm high

£5,500

A red eyed tree frog playing the Fender Stratocaster guitar. 'I was watching a band and was struck by the guitarist who was wonderful; he was rocking, jumping around and being so cool. Bizarrely I saw him as a frog. I will be sculpting another frog playing the saxophone. The piece is cast in bronze and I have used different textures and colours to represent the smooth frog and the texture of the lichen on the branch.'

Mark Pearson



Busker Summer Afternoon

Acrylic and Ink on Paper - Framed

42 x 52cm

£850

Mark Pearson



Midsummer Frank's Café

Acrylic and Ink on Paper - Framed

42 x 52cm

£850

Mark Pearson



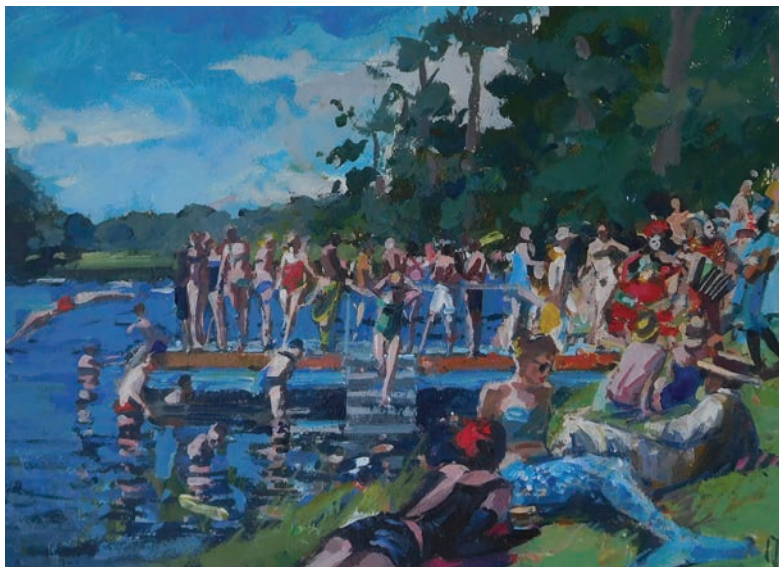
Margate Sands

Acrylic and Ink on Paper - Framed

42 x 52cm

£900

Mark Pearson



Festival Lake

Acrylic and Ink on Paper - Framed

42 x 52cm

£950

William Pierce



Liverpool Street Station

Charcoal on Paper - Framed

72 x 54cm

£550

William Pierce



Piccadilly Circus

Pen on Paper - Framed

64.5 x 61cm

£575

William Pierce



Southeastern

Oil on Canvas

60 x 65cm

£580

William Pierce



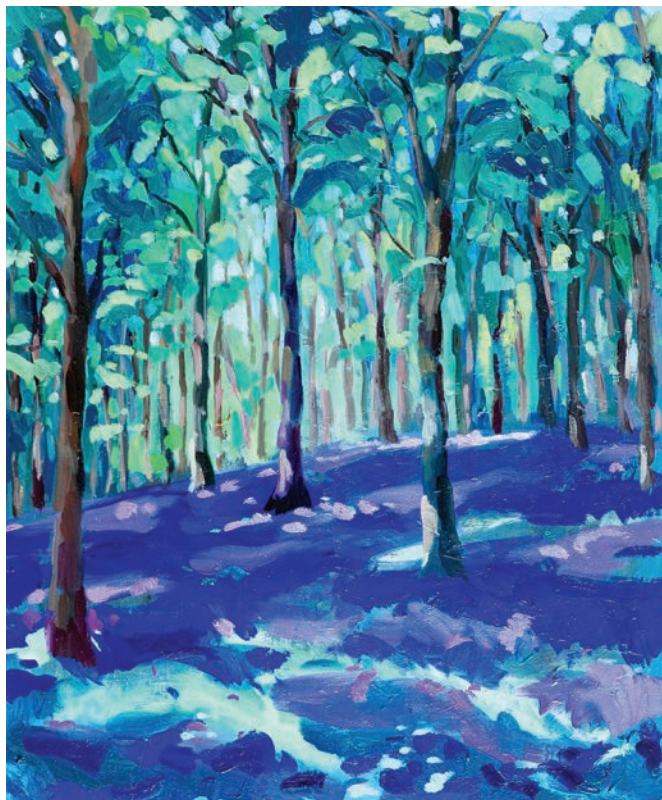
Wandering

Pen and Conte Crayon on Paper - Framed

43 x 49.5cm

£570

Annabel Playfair



Bluebells in Whichford woods

Oil on Canvas

60 x 50cm

£1,500

Annabel Playfair



Cherry blossom

Oil on Canvas

35 x 40cm

£800

Annabel Playfair



Hay bales

Oil on Canvas

35 x 45cm

£850

Annabel Playfair



Port Isaac

Oil on Canvas

65 x 80cm

£2,500

Annabel Playfair



View to Lacoste from Bonnieux, Provence

Oil on Canvas

65 x 80cm

£2,500

Annabel Playfair



Plate of tiger prawns

Oil on Board - Framed

56 x 62cm

£1,100

Doug Scott CBE



Bhutanese Schoolchildren

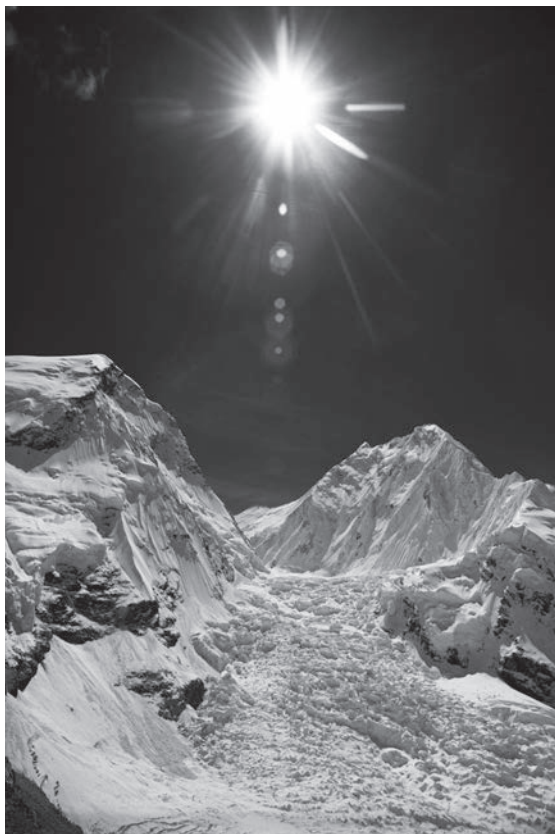
Framed

38 x 52cm

Edition of 10

£495

Doug Scott CBE



Khumbu Icefall (2)

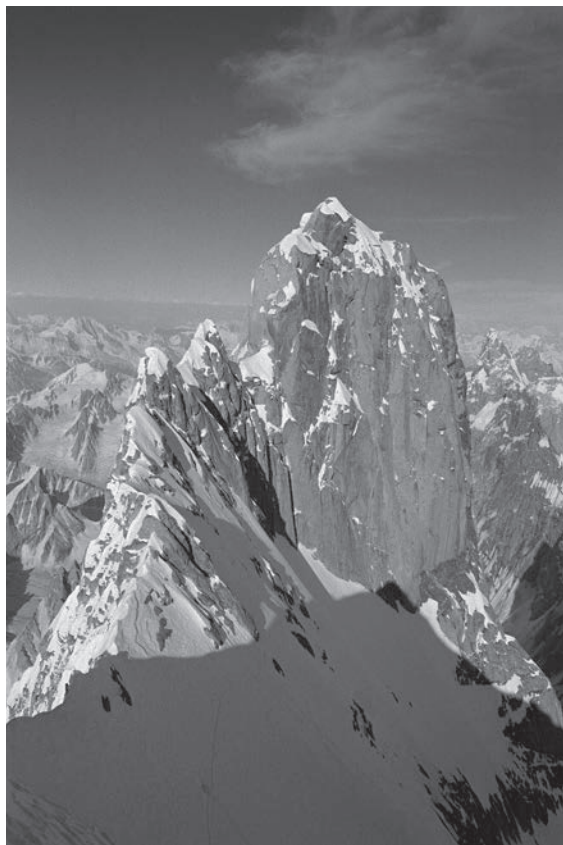
Framed

38 x 52cm

Edition of 10

£495

Doug Scott CBE



Summit tower of the Ogre

52 x 38cm

Edition of 10

£495

Doug Scott CBE



Summit tower of the Ogre (2)

52 x 38cm

Edition of 10

£495

Michael Sofroniou



Down River

Oil on Canvas - Framed

46 x 63cm

£1,100

Michael Sofroniou



Still life with teapot and mint

Oil on Canvas - Framed

60 x 50cm

£1,250

Michael Sofroniou



Pink Lillies

Oil on Canvas - Framed

61 x 55cm

£1,250

Michael Sofroniou



Still life in artificial light

Oil on Canvas - Framed

52 x 60cm

£1,100

Michael Sofroniou



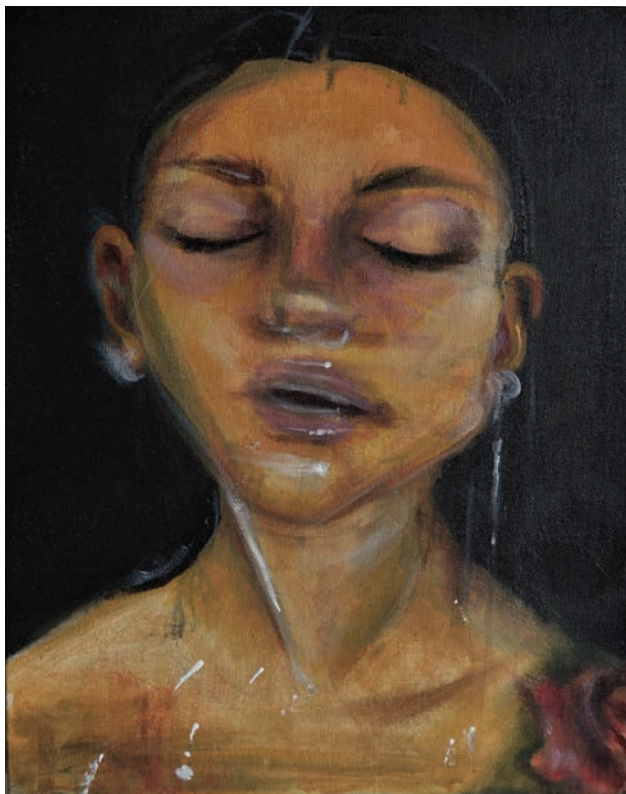
Jug and lemons

Oil on Canvas - Framed

91 x 122cm

£2,400

Meera Solanki



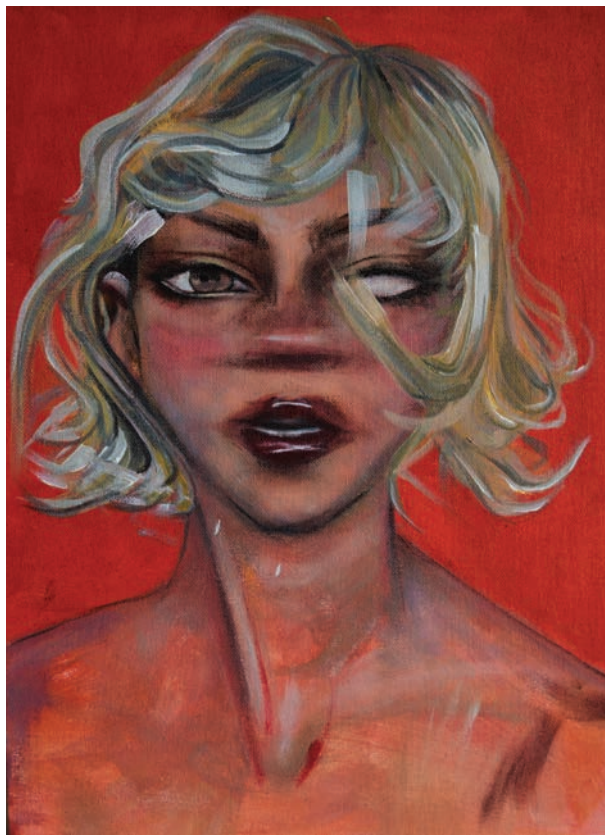
Late

Acrylic on Board

35 x 28cm

£1,250

Meera Solanki



Red

Acrylic on Board

41.5 x 29.5cm

£1,090

Meera Solanki



Teenager

Acrylic on Board

35.5 x 25cm

£1,090

Richard Tait



Shard Sunset

Acrylic on Canvas

30 x 15cm

£400

Richard Tait



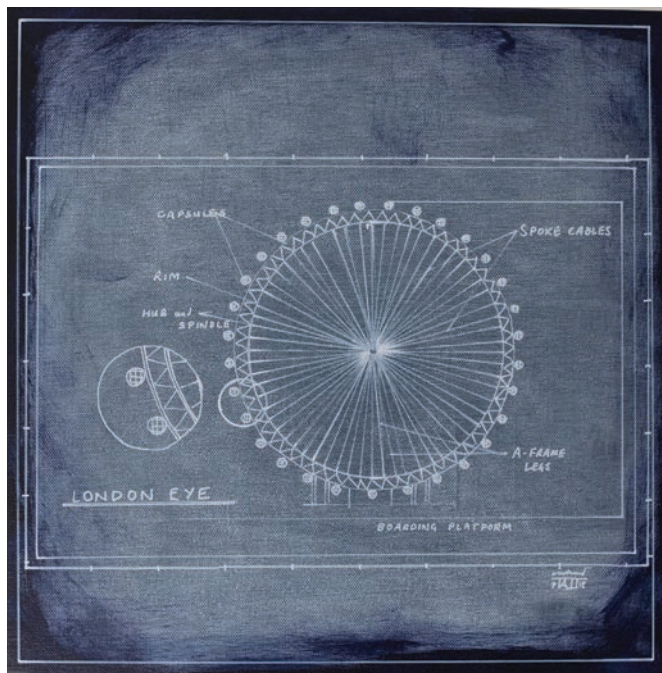
Shard Blueprint

Acrylic on Canvas

40 x 40cm

£560

Richard Tait



London Eye Blueprint

Acrylic on Canvas

40 x 40cm

£560

Richard Tait



The Gherkin Blueprint

Acrylic on Canvas

40 x 40cm

£560

Caroline Thomson



Into the Woods

Oil on Canvas

91 x 122cm

£1,430

Caroline Thomson



Settle

Oil on Canvas

25 x 30.5cm

£300

Caroline Thomson



Flipside

Oil on Canvas

30 x 40cm

£500

Caroline Thomson



Flipside II

Oil on Canvas

30 x 40cm

£500

Caroline Thomson



Golden

Oil on Canvas

30 x 40cm

£500

Luke M. Walker



Up to the Highest Point

Acrylic and Oil on Canvas - Framed

122 x 96cm

£4,500

Luke M. Walker



Transient City 3

Acrylic and Oil on Canvas - Framed

20 x 15cm

£280

Luke M. Walker



Transient City 7

Acrylic and Oil on Canvas - Framed

20 x 15cm

£280

Luke M. Walker



Transient City 8

Acrylic and Oil on Canvas - Framed

Double 40 x 15cm

£400

Michael Wallner



Above and Beyond

Print on Brushed Aluminium, Edition of 15

102 x 152cm

£1,995

Created from an original photograph, taken while hanging out of a helicopter with the doors off. You can see many of London's great landmarks from the South Bank to Canary Wharf and beyond. Printed on brushed aluminium, giving the image an etched effect.

Michael Wallner



Greenwich from Above

Print on Brushed Aluminium, Edition of 25

66 x 1110cm

£995

One of London's classic landmarks: the Old Royal Naval College in Greenwich. Created from an original photograph, taken while hanging out of a helicopter with the doors off. Painstakingly coloured by hand on a graphics tablet and printed on brushed aluminium, giving the piece an etched effect.

Philip Williams



Sky Triptych

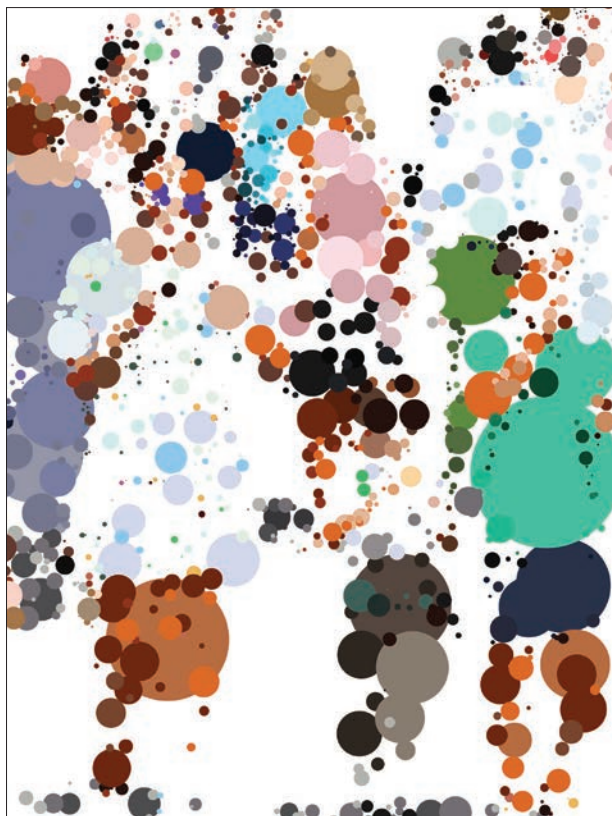
Oil on Canvas

Three panels each 30cm x 90cm

(overall dimensions approx. 100 x 90cm)

£1,750

Philip Williams



Ronda 2

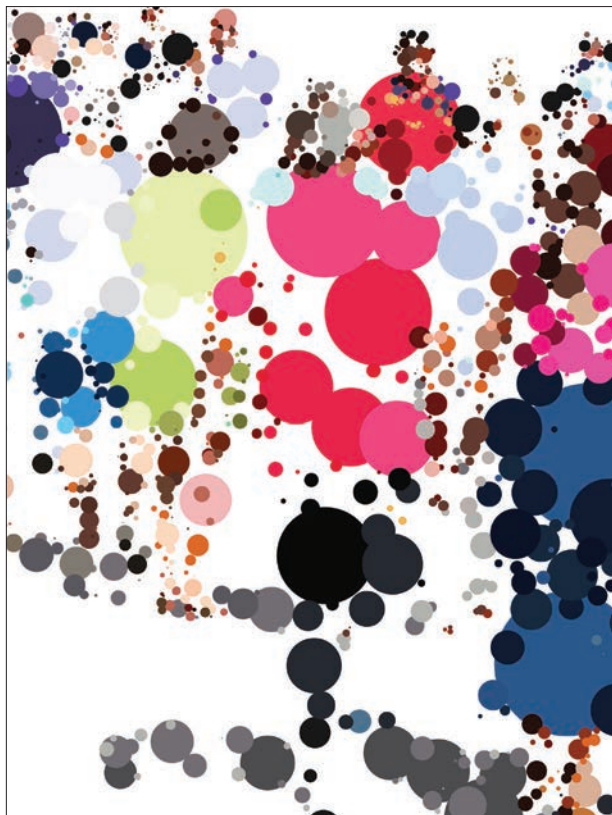
Ink Dye Sublimation on Aluminium

Series of 20

30 x 40cm

£400

Philip Williams



Ronda 3

Ink Dye Sublimation on Aluminium

Series of 20

30 x 40cm

£400

Melanie Wright



Towards The Malvern Hills

Watercolour

10 x 26cm

£780

Melanie Wright



Grazing Greys

Watercolour

10 x 26cm

£780

Melanie Wright



Summer Grazing

Watercolour

10 x 26cm

£780

Melanie Wright



Late Summer Hues

Watercolour

46 x 75cm

£1,800