



Inspired since 1991



WOMEN
2019
2020

**PROFESSIONAL
BASKETBALL
SPORTSWEAR**



Inspired since 1991

CONTENT

| | |
|--------------------------|----|
| HOW DO WE WORK? | 3 |
| WOMEN BASKETBALL OUTFITS | |
| Pre-season | 4 |
| Vision | 5 |
| Season Heat | 6 |
| Most Popular | 8 |
| Basketball Dresses | 9 |
| Warm-up | 10 |
| TRAVELLING AND STAFF | 11 |
| LEISURE | 12 |
| ACCESORIES | 14 |
| FONTS | 15 |
| MARKINGS | 16 |
| SIZE CHART | 17 |
| TECHNOLOGIES | 18 |



Inspired since 1991

HOW DO WE WORK?

STEP 1. MAKING INDIVIDUAL DESIGN

Everything starts with an idea. If you have an idea and you know what you want - that works for us. Knowing the model, having design in mind and logos that must be placed (.cdr, .eps, .pdf vector files) - that is all we need to start working.

STEP 2. PRICE

As soon, as we have an individual design confirmed by you and we know the number of outfits you need, we can count the price of your custom made individual outfits.

STEP 3. MEASURING

Each model has individual measurements system and tables that must be filled in upon an order. Remember to pay attention if model is slim, regular or loosen.

STEP 4. PAYMENT AND DELIVERY

Terms of production depends on either it is season or not. So, it takes about 2-3 weeks since January 15th until the 1st of June. It is about 4-6 weeks since June 1st up to January 15th. However, we can mark your order as 'urgent' - just it is going to be charged extra. We start making the outfits as soon, as payment (or part of it) is made.

STEP 5. GUARANTEES

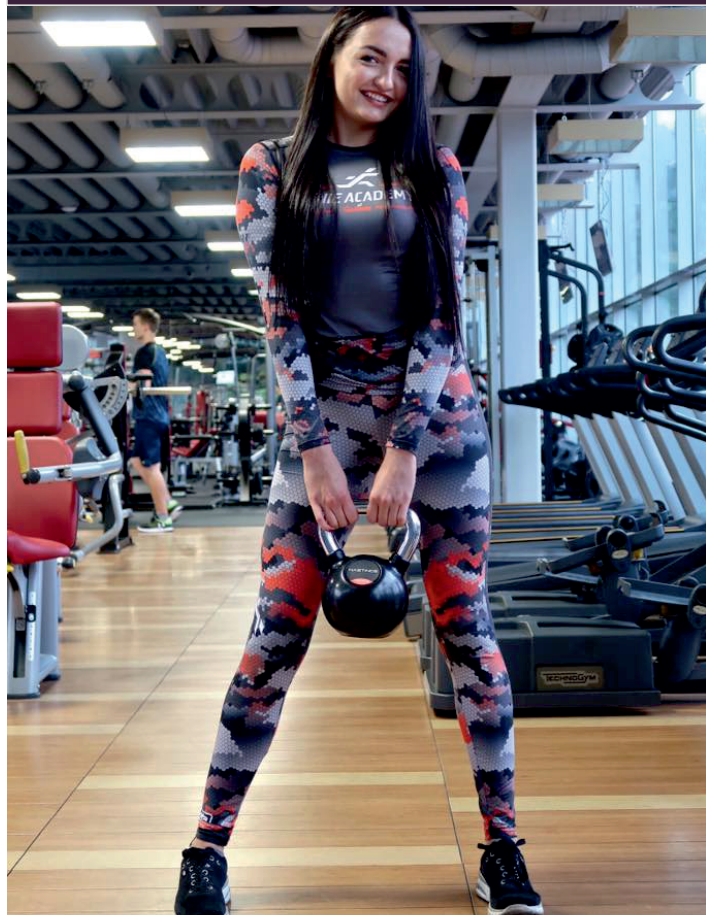
As you already know, we are in business for more than 28 years. We guess, it confirms our "know-how" along with trust we have from other professionals we dress and cooperate with. Together with the sportswear we produce, we guarantee the quality and exclusiveness. We assure that there are not going to be any problems with the fabric and the construction of our sportswear if you use it following label of care.



PRE-SEASON



Team "Kibirkištis" from Vilnius wearing reversible set ↑
Partner club "Fitnie Academy by Galinta" personnel ↓



REVERSIBLE BASKETBALL TRAINING SET

012205/022205

FABRIC 30% LIGHTER ONE LAYER REVERSIBLE FABRIC



WICK-ON
technology
100% POLYESTER

CARE:
Wash separately

REGULAR
FIT

AVAILABLE
COLORS:



| | XS | XS | S | M | M | L | XL | XL | 2XL | 3XL | 3XL | 4XL |
|-----------------|-----|------|-----|------|-----|------|-----|------|-----|------|-----|-----|
| A/B,cm | 42 | 44 | 46 | 48 | 50 | 52 | 54 | 56 | 58 | 60 | 62 | 64 |
| HEIGHT | 164 | 170 | 176 | 182 | 188 | 194 | 200 | 206 | 212 | 218 | 224 | |
| Shirts length C | 60 | 62,5 | 65 | 67,5 | 70 | 72,5 | 75 | 77,5 | 80 | 82,5 | 85 | |
| Short length B | 42 | 43,5 | 45 | 46,5 | 48 | 49,5 | 51 | 52,5 | 54 | 55,5 | 57 | |
| | XS | XS | S | M | M | L | XL | XL | 2XL | 3XL | 3XL | 4XL |
| | 42 | 44 | 46 | 48 | 50 | 52 | 54 | 56 | 58 | 60 | 62 | 64 |
| | 50 | 52 | 54 | 56 | 58 | 60 | 62 | 64 | 66 | 68 | 70 | 72 |



CHILDREN
SIZES AVAILABLE

ELASTIC WORKOUT SET

elm 16202/ elm 16202-1/ HK 79

WICK-ON
technology
100% POLYESTER

CARE:
Wash separately



STRETCH



ANY COLOR AND DESIGN
IS AVAILABLE

| SIZE | CHEST | WAIST | HIPS |
|------|---------|--------|---------|
| XS | 76-83 | 60-67 | 84-91 |
| S | 83-90 | 67-74 | 91-98 |
| M | 90-97 | 74-81 | 98-105 |
| L | 97-104 | 81-88 | 105-112 |
| XL | 104-114 | 88-98 | 112-120 |
| 2XL | 114-124 | 98-108 | 120-128 |

*MOST USED SIZES, if you need other size - please contact us.
Long and short sleeves versions are possible.



VISION

GAMINIO KODAS



BC KIBIRKŠTIS (Vilnius) Game Set ↑

Anastasiya Verameyenka wearing "Tuta" Game set ↓



EVERYTHING STARTS FROM an IDEA

BASKETBALL GAME SET



Do you have an IDEA of YOUR OWN UNIQUE design of the game set?

Our goal is to fulfill that dream.

Trust your VISION to us and we will bring it to REALITY!

WICK-ON
technology
100% POLYESTER

CARE: Wash separately

SLIM FIT



ANY COLOR AND DESIGN IS AVAILABLE

CHILDREN SIZES AVAILABLE



| | XS | XS | S | M | M | L | XL | XL | 2XL | 3XL |
|---------|---------|---------|---------|---------|---------|---------|---------|---------|---------|---------|
| A/B, cm | 42 | 44 | 46 | 48 | 50 | 52 | 54 | 56 | 58 | 60 |
| | 42 / 43 | 44 / 45 | 46 / 47 | 48 / 49 | 50 / 51 | 52 / 53 | 54 / 55 | 56 / 57 | 58 / 59 | 60 / 61 |

| | | | | | | | | |
|------------------------|-----|------|-----|------|-----|------|-----|------|
| HEIGHT | 164 | 170 | 176 | 182 | 188 | 194 | 200 | 206 |
| Shirts length C | 54 | 56 | 58 | 60 | 62 | 64 | 66 | 68 |
| Short length B | 35 | 36,5 | 38 | 39,5 | 41 | 42,5 | 44 | 45,5 |



| | XS | XS | S | M | M | L | XL | XL | 2XL | 3XL |
|---------|----|----|----|----|----|----|----|----|-----|-----|
| A/B, cm | 42 | 44 | 46 | 48 | 50 | 52 | 54 | 56 | 58 | 60 |
| | 49 | 51 | 53 | 55 | 57 | 59 | 62 | 63 | 65 | 67 |

2019-2020 season

www.tuta.lt

SEASON HEAT

BASKETBALL GAME SET

9292

"PLUME"



"GRACIA"



"TWINE"



"MOSAIC"



"ATTRACT"



*We vote for
Stylish Victories!*

WICK-ON
technology
100% POLYESTER

CARE: Wash separately

REGULAR
FIT

STRETCH



ANY COLOR AND DESIGN
IS AVAILABLE



| | | | | | | | | | | |
|--------|---------|---------|---------|---------|---------|---------|---------|---------|---------|---------|
| | XS | XS | S | M | M | L | XL | XL | 2XL | 3XL |
| A/B,cm | 42 | 44 | 46 | 48 | 50 | 52 | 54 | 56 | 58 | 60 |
| | 45 / 49 | 47 / 51 | 49 / 53 | 51 / 55 | 53 / 57 | 55 / 59 | 57 / 61 | 59 / 63 | 61 / 65 | 63 / 67 |

| | | | | | | | | |
|-----------------|-----|------|-----|------|-----|------|-----|------|
| HEIGHT | 164 | 170 | 176 | 182 | 188 | 194 | 200 | 206 |
| Shirts length C | 64 | 66 | 68 | 70 | 72 | 74 | 76 | 78 |
| Short length B | 37 | 38,5 | 40 | 41,5 | 43 | 44,5 | 46 | 47,5 |

| | | | | | | | | | |
|----|----|----|----|----|----|----|----|-----|-----|
| XS | XS | S | M | M | L | XL | XL | 2XL | 3XL |
| 42 | 44 | 46 | 48 | 50 | 52 | 54 | 56 | 58 | 60 |
| 50 | 52 | 54 | 56 | 58 | 60 | 62 | 64 | 66 | 68 |

2019-2020 season

www.tuta.lt

DRESSES



Anastasiya Verameyenka ↑

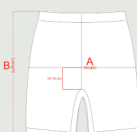
BASKETBALL GAME DRESSES (APPROVED BY FIBA EURPE)

Professional women game dresses, manufactured in Lithuania by an order. "Tuta" – 1st company in all world that started making basketball dresses – the deepest "know-how" is assured.



| | XS | XS | S | M | M | L | XL | XL | 2XL | 3XL |
|--------|---------|---------|---------|---------|---------|---------|---------|---------|---------|---------|
| A/B,cm | 42 | 44 | 46 | 48 | 50 | 52 | 54 | 56 | 58 | 60 |
| | 43 / 52 | 45 / 56 | 47 / 56 | 49 / 57 | 51 / 59 | 53 / 61 | 55 / 63 | 57 / 65 | 59 / 67 | 61 / 69 |

| HEIGHT | 164 | 170 | 176 | 182 | 188 | 194 | 200 | 206 |
|----------------|-----|-----|-----|-----|-----|-----|-----|-----|
| Dress length C | 78 | 81 | 84 | 87 | 90 | 93 | 96 | 99 |
| Short length B | 40 | 42 | 44 | 46 | 48 | 50 | 52 | 54 |



| | XS | XS | S | M | M | L | XL | XL | 2XL | 3XL |
|---|----|----|----|----|----|----|----|----|-----|-----|
| B | 30 | 32 | 34 | 36 | 38 | 40 | 42 | 44 | 46 | 48 |
| A | 50 | 52 | 54 | 56 | 58 | 60 | 62 | 64 | 66 | 68 |

WICK-ON
technology
100% POLYESTER

CARE: Wash separately

SLIM FIT

STRETCH



ANY COLOR AND DESIGN IS AVAILABLE

"ROSETTE"
061201/ 071201



"APHRODITE"
Suk9251/ Štr 7213



"ATTRACT"
Suk 0218/ Štr 7213



"TWINE"
061202



WARM-UP

WARM-UP SUIT

"MOSAIC"

Bk0220 / K0215



"ATTRACT"

Bk9278 / K0207



"SUN"

041203 / 051203



"GRACIA"

Bk9207 / K9207

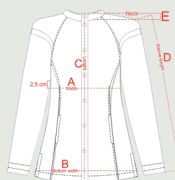


ANY COLOR AND DESIGN IS AVAILABLE

WICK-ON
technology
100% POLYESTER

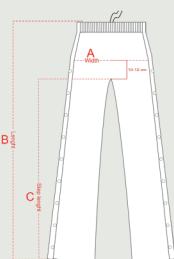
CARE: Wash separately

REGULAR FIT



| | XS | XS | S | M | M | L | XL | XL | 2XL | 3XL |
|---------|---------------|---------------|---------------|---------------|---------------|---------------|---------------|---------------|---------------|---------------|
| A/B, cm | 42 49 / 49 | 44 52 / 51 | 46 54 / 53 | 48 56 / 55 | 50 58 / 57 | 52 60 / 59 | 54 62 / 61 | 56 64 / 63 | 58 66 / 65 | 60 68 / 67 |

| | | | | | | | | |
|-----------------|-----|------|-----|------|-----|------|-----|------|
| HEIGHT | 164 | 170 | 176 | 182 | 188 | 194 | 200 | 206 |
| Jacket length C | 69 | 71 | 74 | 76 | 78 | 80 | 82 | 84 |
| Sleeve length D | 74 | 76,5 | 79 | 81,5 | 84 | 86,5 | 89 | 91,5 |
| Neck E | 4 | 4 | 4 | 4 | 4 | 4 | 4 | 4 |



| | XS | XS | S | M | M | L | XL | XL | 2XL | 3XL |
|---------|----------|----------|----------|----------|----------|----------|----------|----------|----------|----------|
| A/B, cm | 42 52 | 44 54 | 46 56 | 48 56 | 50 58 | 52 60 | 54 62 | 56 64 | 58 66 | 60 68 |

| | | | | | | | | |
|---------------|-----|-----|-----|-----|-----|-----|-----|-----|
| HEIGHT | 164 | 170 | 176 | 182 | 188 | 194 | 200 | 206 |
| Length B | 100 | 104 | 108 | 112 | 116 | 120 | 124 | 128 |
| Step length C | 80 | 82 | 84 | 86 | 88 | 90 | 92 | 94 |

WARM-UP

SHOOTING SHIRT

Shooting shirt of "Kibirkštis" long and short sleeves ↘



"ATTRACT"

Mk 0238



"MOSAIC"

Mk 0219



"TWINE"

031202



"GRACIA"

Mk 9206



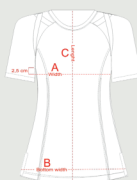
WICK-ON
technology
100% POLYESTER

CARE:
Wash separately

REGULAR
FIT



ANY COLOR AND DESIGN
IS AVAILABLE



| | XS | XS | S | M | M | L | XL | XL | 2XL | 3XL |
|-----------------|---------|---------|---------|---------|---------|---------|---------|---------|---------|---------|
| A/B,cm | 42 / 43 | 44 / 45 | 46 / 47 | 48 / 49 | 50 / 51 | 52 / 53 | 54 / 55 | 56 / 57 | 58 / 59 | 60 / 61 |
| HEIGHT | 164 | 170 | 176 | 182 | 188 | 194 | 200 | 206 | | |
| Shirts length C | 63 | 65,5 | 68 | 70,5 | 73 | 75,5 | 78 | 80,5 | | |

TRAVELING & STAFF



BC "Kibirkštis" Pre-game moment pictured ↑



POLO SHIRT



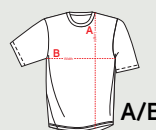
Cotton T - SHIRT



Polo Shirt Fabric - 65% PLYESTER; 35% COTTON
T-Shirt Fabric - 100% COTTON

CARE:
Wash separately

SLIM FIT



| | | | | |
|---------|---------|---------|---------|---------|
| S | M | L | XL | XXL |
| 61 / 41 | 63 / 44 | 65 / 47 | 67 / 50 | 69 / 53 |

BC "Kibirkštis" Player posing with Tuta Hoodie ↓



COTTON SUIT 1316202/1416202



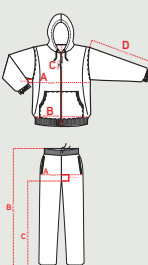
COTTON SUIT 1316201/1416201



Winter/autumn FRENCH TERRY heavy fabric - 100% COTTON
Spring/summer FRENCH TERRY elastic fabric - 85% COTTON 15% ELASTAN

CARE:
Wash separately

SLIM FIT



| A/B,cm | XS | S | M | L | XL | 2XL | 3XL | 4XL |
|-----------------|------|------|------|------|------|------|------|-------|
| HEIGHT | 164 | 170 | 176 | 182 | 188 | 194 | 200 | 206 |
| Jacket length C | 61 | 63,5 | 66 | 68,5 | 71 | 73,5 | 76 | 78,5 |
| Sleeve length D | 60,5 | 62,5 | 64,5 | 66,5 | 68,5 | 70,5 | 72,5 | 74,5 |
| A/B,cm | XS | S | M | L | XL | 2XL | 3XL | 4XL |
| HEIGHT | 164 | 170 | 176 | 182 | 188 | 194 | 200 | 206 |
| Step length C | 79 | 82,5 | 85,5 | 88,5 | 91,5 | 94,5 | 97,5 | 100,5 |

LEISURE



SUBLIMATED POLO SHIRT AND T-SHIRT

012104/022104



WICK-ON
technology
100% POLYESTER

CARE:
Wash separately

REGULAR
FIT



ANY COLOR AND DESIGN
IS AVAILABLE

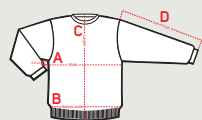


| | XS | XS | S | M | M | L | XL | XL |
|--------|-----|-----|-----|-----|-----|-----|-----|----|
| | 40 | 42 | 44 | 46 | 48 | 50 | 52 | 54 |
| A | 40 | 42 | 44 | 46 | 48 | 50 | 52 | 54 |
| B | 60 | 64 | 68 | 72 | 76 | 80 | 84 | 88 |
| HEIGHT | 158 | 164 | 170 | 176 | 182 | 188 | 194 | |



FLEECE JUMPER

1315103



| A/B,cm | XS | S | M | L | XL | 2XL | 3XL | 4XL |
|-----------------|-------------|-------------|-------------|-------------|-------------|-------------|-------------|-------------|
| | 44,5 / 41,5 | 47,5 / 44,5 | 50,5 / 47,5 | 53,5 / 50,5 | 56,5 / 53,5 | 59,5 / 56,5 | 62,5 / 59,5 | 65,5 / 62,5 |
| HEIGHT | 164 | 170 | 176 | 182 | 188 | 194 | 200 | 206 |
| Jacket length C | 61 | 63,5 | 66 | 68,5 | 71 | 73,5 | 76 | 78,5 |
| Sleeve length D | 60,5 | 62,5 | 64,5 | 66,5 | 68,5 | 70,5 | 72,5 | 74,5 |

FRENCH TERRY

CARE:
Wash separately

SLIM
FIT

- AVAILABLE COLORS:
- BLACK
 - GREEN LIGHT
 - RED
 - BLUE
 - GREY LIGHT
 - GREEN DARK
 - GREY DARK
 - BRICK



Winter/autumn FRENCH TERRY heavy fabric - 100% COTTON
Spring/summer FRENCH TERRY elastic fabric - 85% COTTON 15% ELASTAN

ACCESSORIES

BACKPACK



Size: 40x32x30

The dimensions and appearance of the product may differ, due to the quantities of different models available at that time.

BAG



Size: 60x32x30

The dimensions and appearance of the product may differ, due to the quantities of different models available at that time.

SOCKS KOJ401



75% COTTON
5% POLIPROPYLEN
10% ELASTAN
10% GUMITEX

WICK-ON
technology

CARE: Wash separately



ANY COLOR AND DESIGN
IS AVAILABLE

Sizes: 38-42; 42-46; 46-50.

SHIRTS for FANS MK7124



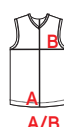
75% COTTON
5% POLIPROPYLEN
10% ELASTAN
10% GUMITEX

WICK-ON
technology

CARE: Wash separately



ANY COLOR AND DESIGN
IS AVAILABLE



| | XS | XS | S | M | M | L | XL | XL | 2XL | 3XL |
|-----------------|-------|-------|-------|-------|-------|-------|-------|-------|-------|-------|
| A/B,cm | 42 | 44 | 46 | 48 | 50 | 52 | 54 | 56 | 58 | 60 |
| | 45/48 | 47/51 | 49/53 | 51/55 | 53/57 | 55/59 | 57/61 | 59/63 | 61/65 | 63/67 |
| HEIGHT | 164 | 170 | 176 | 182 | 188 | 194 | 200 | 206 | | |
| Shirts length C | 64 | 66 | 68 | 70 | 72 | 74 | 76 | 78 | | |

SIZE CHART

HOW TO CHOOSE THE RIGHT SIZE

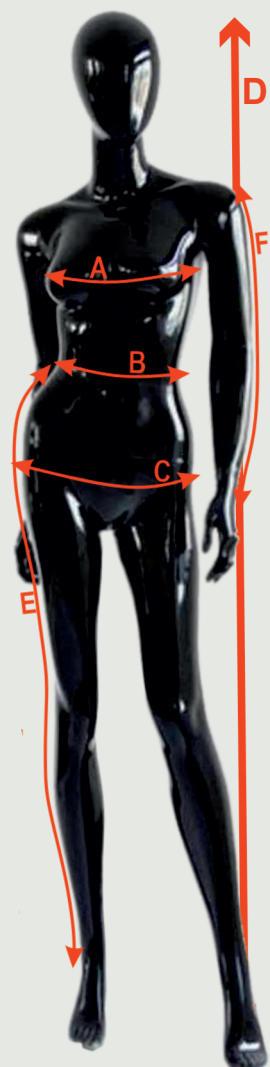
When taking the measures of your body, you need to be dressed less as it is possible, stand stright, relaxed, without shoes and with empty pockets.

Main measures:

- D** Height.
- A** Breast size. To measure the widest place of the breast.
- C** Hips size. To measure the widest place of hips.














Extra measures:

- B** Waist size. To measure the narrowest place of waist. If you have a belly - please, measure the widest place of waist then.
- F** Arm lenght. To measure from shoulder to wrist, the arm needs to be bended a bit.
- E** Step size. To measure from the inside of the leg i.e from groin to the ground.



| | XS | XS | S | M | M | L | XL | XL |
|-------------------|-------|-------|-------|--------|---------|---------|---------|---------|
| | 40 | 42 | 44 | 46 | 48 | 50 | 52 | 54 |
| A | 80 | 84 | 88 | 92 | 96 | 100 | 104 | 108 |
| B | 60 | 64 | 68 | 72 | 76 | 80 | 84 | 88 |
| C | 86-88 | 90-92 | 94-96 | 98-100 | 102-104 | 105-107 | 108-110 | 114-116 |
| D (HEIGHT) | 158 | 164 | 170 | 176 | 182 | 188 | 194 | |
| F | 57 | 59 | 61 | 63 | 65 | 67 | 69 | |
| E | 99 | 103 | 107 | 111 | 115 | 119 | 123 | |

RECOMMENDATIONS: FONTS FOR NUMBERS

1. 
2. 
3. 
4. 
5. 
6. 
7. 
8. 
9. 
10. 
11. 
12. 
13. 

TECHNOLOGIES

MAIN technology:

WICK-ON
technology



This high-performance microfiber polyester fabric actually pulls sweat away from the body and transports it to the fabric surface - where it evaporates and leaves the skin cool and dry.

Stay dry. Stay comfortable.
No matter what.

REVERSIBLE outfits technology:

FABRIC

30% LIGHTER ONE LAYER REVERSIBLE FABRIC

Do not waste your time thinking of fabric of your reversible set. Spend your time more qualitative reaching the maximum outcome you can gain from your practise. To assure the best of the result, we use much lighter one layer reversible fabric.

Lighter outfit - better practice experience.

DESIGN AND COLORS OPTIONS

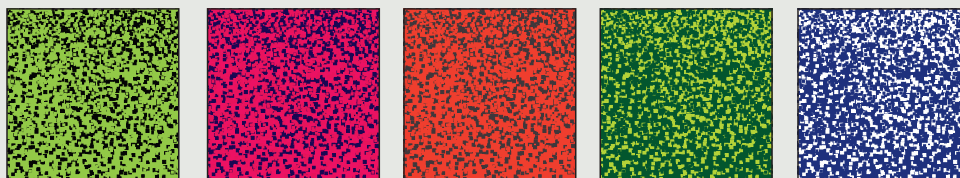


ANY COLOR AND DESIGN IS AVAILABLE

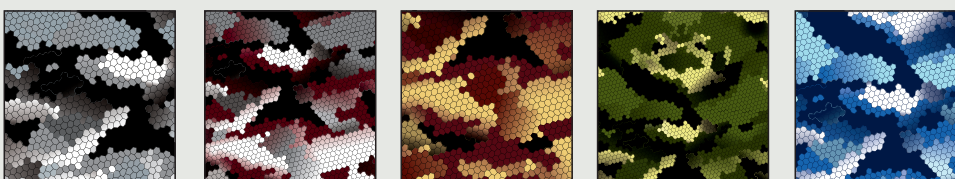
What does this badge mean?

You can choose any color and any design option you want or even create your own design with our help.

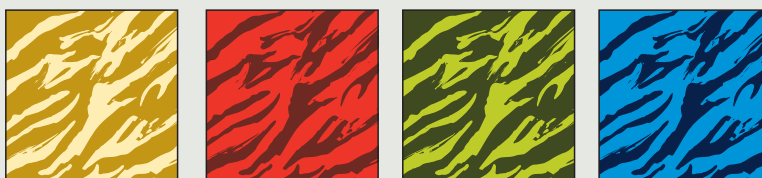
1. "SPRAY"



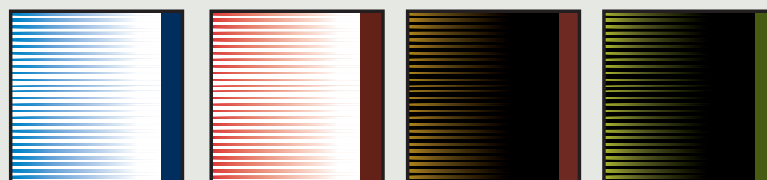
2. "NATO"



3. "TIGER"



4. "LINEAR"



5. "VISION"

CREATE YOUR OWN VISION

