

your sourcing solution for new & used equipment & machinery

earthbroker

email: janine@earthbroker.co.za

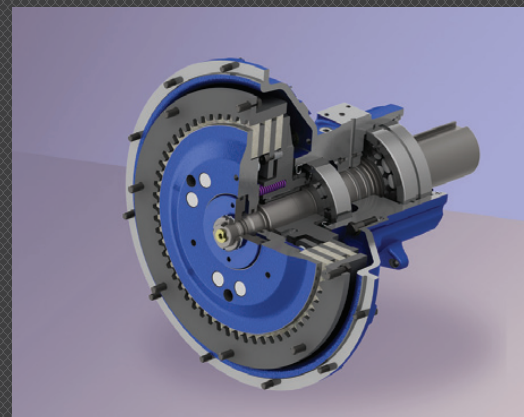
web: www.earthbroker.co.za

volume 15 issue 10 October 2019

Sintech

ORIGINAL EQUIPMENT SUPPLIER

MINING
INDUSTRIAL
OFF-HIGHWAY



www.sintech.co.za

+27 (0)11 823 2359



SPIDER MINI CRANES

SOUTH AFRICA

Head Office - 035 787 0679

Bob - 082 570 5781 | bob.uniccranes@bbplant.co.za,

Tara - 079 694 3978 | tara.uniccranes@bbplant.co.za

JHB Office : Sean - 064 754 8419 | sean.uniccranes@bbplant.co.za

DBN Office: Phil on 071 118 7145 | phil.uniccranes@bbplant.co.za

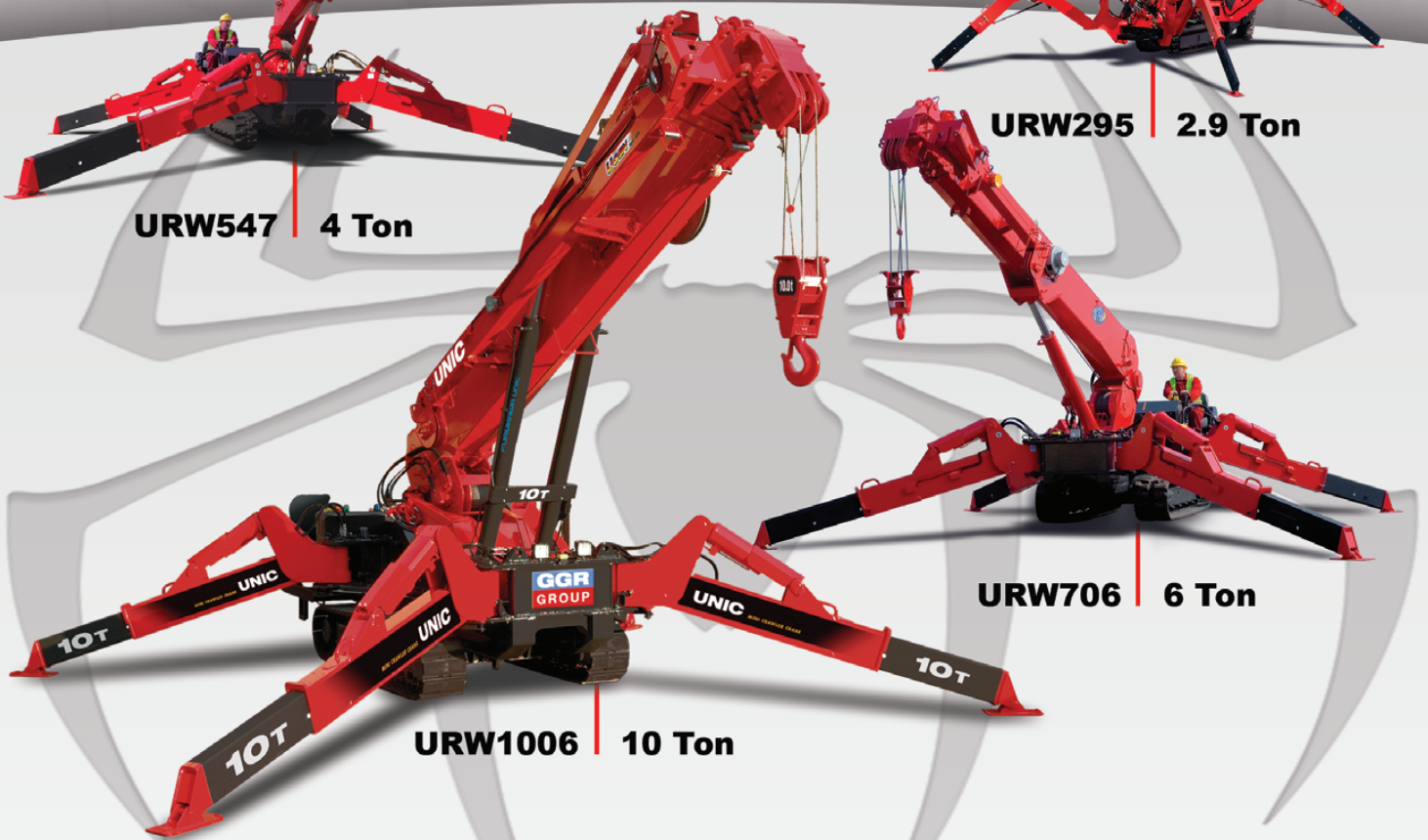
Visit our website at www.bbplant.co.za



URW547 | 4 Ton



URW295 | 2.9 Ton



URW1006 | 10 Ton



URW706 | 6 Ton

RENTALS | SALES | SERVICE

Head Office - 55 Knutzen Street, Empangeni, Kwazulu Natal
Johannesburg Office - 55a Harris Ave, Sebenza, Edenvale

Contact Details

Sales Manager & Editor
Janine Sargeant
083 456 4027

Design / Layout
Dylan McDonald
082 485 3001

Sales Contact
083 456 4027

Electronic Origination & Printing
Paarl Media (Pty) Ltd.

The Editors welcome articles and photographs, which will be considered for publication on their merit.

Disclaimer: The Editors and Publisher do not necessarily endorse any views or statements made by contributors.

Janine Sargeant
083 456 4027
(FAX) 086 685 1258
janine@earthbroker.co.za

Physical Address:
Suite 16, Hillcrest Office park
2 Old Main Road, Hillcrest, 3610

Postal Address:
P.O. Box 2484,
Hillcrest,
3650

Banking Details:
Earthbroker
First National Bank
Hillcrest
Code: 223726
Account No.: 62295649308



83

ASV Holdings Inc.

Signs Definitive Merger Agreement With Yanmar Holdings



89

BLT WORLD & Desmond Equipment

BLT WORLD and Desmond Equipment celebrate 10 years



88

BOBCAT-SANY

Volvo Financial Services now available for Babcock's construction equipment



90

Pilot Crushtech

Pilot Modular makes sense



72

PTT

Aftermarket parts vs. OEM parts

Industry News

Stay up to date with all the latest Industry news

Contents

Advertisers Index	91	Marsay Equipment	75
All Africa Supplies	34	McKenzie Plant	19
Amalgamated Plant	10	Midplant Services	71
Associated Equipment	49	Mzantsi Transmissions	26
B & B Plant	2	New Beginnings Designs	18
Bell Equipment	8,100	One Stop Procurement	28
BLC Plant	50	P & R Earthmoving	29
BLC Trucks	51	Paramount Tracks	68
BLC Parts & Components	52	Plant Finder	20-21
Blumaq South Africa	12-14	Powertrans	4
Bula Matari	23	Power Transmission Technology	48
Cat ER	26	Prime Plant	70
Centrax	24-25	Queensburgh Plant Sales	99
CTC Plant Company (PTY) Ltd	46	Rhino Excavator Hammers	30
Dozer Parts	44-45	Rocktech	9
Dura Sales	15,54-59	Ruspet Exhausts	10
Earthmoving Machine Sales	84-85	Shin Li Trading	32-33
Earth Mach	41	Sintech	1,67
East Coast Gears	10	Spec-Cast Wear Parts	62-65
Equipment Parts & Engines	7	Stenhard ING	6
ESP	36-39	STM Mining	22,80-81
Filter Centre	18	TGS	16-17
Force 8	40	TT&C Engineering & Hydraulics	74
Full Blast Hydraulics	6	The Seat Connection	18
Garage Equipment Service	53	Transand	47
Gears for Africa	27	Turboworks	66
ITR Africa	76-79	Vortex Transmissions	35
Inmine - Inala Mining Services	60-61	VR Diesel & Turbo	87
Kaltire	86	Wacker Neuson	10
KDH Hydraulics	82	Wearpact	42
Kemach JCB	11	Machine Classifieds	94
Liugong	31	Quick Reference	95-98
LNE Agri Earth (Pty) Ltd	43		
MAE Equipment	5		
Machinery Contractors	69		



Audit Bureau of Circulations of South Africa

We are ABC accredited

Pamms Certificate no:
2B8EC9060474FFC90FEEEF81A



Conditions of Acceptance

Adverts are subject to the following conditions:

1. Often we receive faxes with illegible letters or numbers. We accept no responsibility due to this.
2. We accept NO responsibility for errors in advertisements received telephonically.
3. We reserve the right to refuse placement or to place the advertisement/s as we see fit.
4. No responsibility will be taken for omission of advertisements, for any errors/colour-differences in advertisements or any results due to such errors.
5. We accept no responsibility for the quality of goods advertised. We merely bring buyers and sellers into contact with each other and we are not responsible for any results due to transactions made through the advertisements.
6. Please note one full calendar months written notice for cancellations.
7. Payment due prior to publication or interest will be charged.
8. There will be an annual increase of 10% at the beginning of each year.
9. The Earthbroker will not be held responsible for content of any advert inserted in our magazine.

Manufacturer's names, numbers & descriptions are used for reference purposes only & it is not implied that any part listed is the product of the manufacturers.



POWERTRANS

THE REBUILD CENTRE

Tel: 032 459 5700 • 0861 POWERTRANS
 Ricky 071 706 8759 • Raven 082 555 4925
info@powertrans.co.za • www.powertrans.co.za



EQUIPMENT



BELL

Dumptruck Spec



CUMMINS

BRAND NEW
Cummins QSB 6.7



BELL

Bell Logger
and Caneloader Parts



BRAND NEW

3.5 TON 2 STAGE MAST
WITH SIDESHIFT
R97 000.00 EXCL



REXROTH PUMP
AND EATON PUMPS



WE SUPPLY BRAND NEW AIRCOOLED
ENGINES FOR BELL EQUIPMENT LOADER,
WE ALSO HAVE A LARGE INVENTORY
OF REBUILT EXCHANGED UNITS



FULL RANGE OF ALLISON
TRANSMISSION SERVICE
EXCHANGE UNITS IN STOCK



INJECTOR PUMP AND
INJECTORS

WE BOAST THE BEST DYNO TEST EQUIPMENT FOR ENGINES AND TRANSMISSIONS IN THE INDUSTRY.

A VISIT TO OUR FACTORY IS WELCOME ANYTIME.

WE ARE AUTHORISED AGENTS FOR (ALLISON TRANSMISSION, TELMA RETARDERS, BOSCH FUEL INJECTION, KIRLOSKR DIESEL ENGINES).
WE SERVICE THE BRANDS OF:



THOMAS MITTAG
 Cell: +27 72 545 6223
 Mail: info@mae-equipment.com

MAE Equipment
 Witbank/Riverside
 (Yard)

www.mae-equipment.com

MAE

EQUIPMENT

CAT390DL-ME



2014 model
 low hours
 Call for Price

CAT 390DL-ME



2014 model
 10.800h
 Call for Price

CAT 385C



2008 model
 9.800h
 ZAR 2.500.000

SANDVIK DP1500 PANTERA



2012 model
 low hours
 6 units available

KOMATSU D155AX-7



2013 model
 low hours
 ZAR 2.900.000

KOMATSU D275A-5



2008 model
 low hours
 ZAR 1.650.000

KOMATSU D275 DOZER



2012 model
 5.700h / new undercarriage
 Call for Price

HAMM 3520HT P



2012 model
 5.262h
 ZAR 850.000

CAT 773F



2010 model
 6 units available
 Call for Price

CAT 769




2007 model
 3 units available
 Call for Price

TEREX TR100



2006 models
 (3 units)
 ZAR 1.250.000

VOLVO A40F



2012 model
 2 units available / low hours
 ZAR 1.900.000

VOLVO A30D



2008 model
 low hours
 ZAR 990.000

WE BUY ALL KINDS OF EARTHMOVING, CONSTRUCTION OR MINING MACHINERY
WE PAY CASH WITHIN 24 HOURS
 PLEASE CONTACT OR SEND OFFERS TO INFO@MAE-EQUIPMENT.COM

„Your Partner for new & used Machinery and Equipment.“

www.mae-equipment.com



WWW.STENHARD.CO.ZA Eerste Straat, Koppies

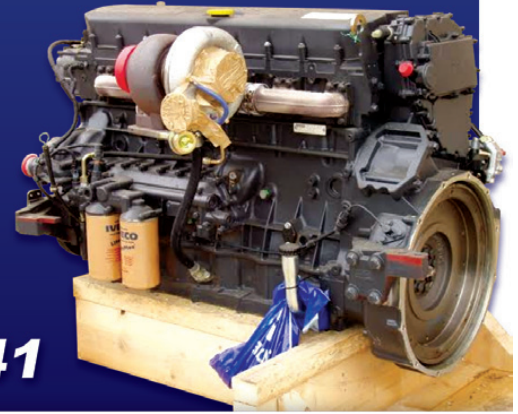
STENHARD ING

ENGINE REBUILDERS

**WE
REBUILD
ANY
ENGINES**



056 777 1841



CLAAS



Perkins

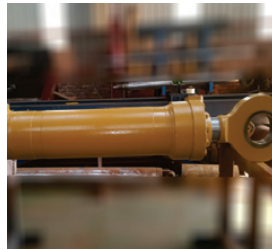
WE ARE JOHN DEERE & IVECO SPECIALISTS



+27 (11) 900 3790

**EXCELLENT FINISH WITH EXACT DETAIL
REPAIRS, REBUILDS AND MANUFACTURE OF NEW CYLINDERS
CHROMING AND HONING OF ALL SIZES AND LENGTHS ON SITE**

SPECIALISED HYDRAULIC MANUFACTURE & REPAIRS. ENGINEERING & MACHINING OF COMPONENTS



FULL BLAST HYDRAULICS

**SPECIALISED HYDRAULIC MANUFACTURE & REPAIRS
ENGINEERING & MACHINING OF COMPONENTS**

INDUSTRIES WE SERVE

**MINING, SHIPPING, EARTH MOVING, AGRICULTURE,
TRANSPORT, ELECTRICITY, PETROLEUM, AND ENGINEERING**

CONTACT US

**INFO@FULLBLASTHYDRAULICS.COM
9 SEDERBERG ROAD, ALRODE SOUTH, EXT.17**

**WE OFFER WARRANTIES ON ALL OUR WORK. WORK IS ALWAYS DONE SPEEDILY AND IN THE MOST COST EFFECTIVE WAY POSSIBLE WITHOUT COMPROMISING THE QUALITY.
WWW.FULLBLASTHYDRAULICS.COM**

EQUIPMENT PARTS & ENGINES CC

SINCE 1996

PARTS FOR EARTHMOVING EQUIPMENT

ADT'S | HAULERS | THREE WHEELERS | LOADERS | WATER & AIRCOOLED ENGINES

Y'ELLO

DO YOU KNOW WHERE TO GO FOR THE BEST SERVICE & PRICES ON:

BELL PARTS

DEUTZ

VICKERS

ZF

CARRARO

**J/DEERE
EARTHMOVING**

AXLE & DIFFS

011 571 9000

EMAIL US:

INFO@EQUIPMENTPARTS.CO.ZA

VISIT US:

46 DIRECTOR ROAD, SPARTAN





F-series

Sweet!

With service intervals every 500 hours, our F-series machines have a lower operating cost per hour than their A-series predecessors.



A-series

#Fseries #Fantasticnews

Bell1402

FOLLOW US ON    

Tel: +27 (0)11 928 9700 • E-mail: sales@bell.co.za
www.bellequipment.com

**Strong Reliable Machines
Strong Reliable Support**

BELL



ROCKTECH

ROCKTECH ESIZAYO AFRICA (PTY) LTD

OUTWORLD: www.outworld.co.za

Suppliers of
Quality Half Arrow Profiles



BEST PRICES GUARANTEED
Delivering QUALITY & PERFORMANCE

Tel: +27 11 793 6838 | Fax: +27 11 793 6626
Web: www.rocktech.co.za | Email: Russell@rocktech.co.za

LTS-Series

The powerful light tower with independent power supply



- 8.5m Mast height
- Individual adjustable levelling jacks
- Available in metal halide or LED



Bright and glare-free

JHB: 011 672 0847
KZN: 031 569 1200
CPT: 021 981 2197

www.wackerneuson.co.za



WACKER NEUSON
all it takes!

SPM Engineering Services cc east coast gears

Specialising in earthmoving power transmission rebuilds of:

- Front end loaders
- Final drives
- Drop boxes (transfer case)
- Differentials etc.

MANUFACTURE OF ALL GEARS AND REPAIRS



REPAIR CARRIER HOUSINGS/ HUBS

Tel: 031 701 3500 | Cell: 083 383 4943 | Fax/Email: 086 224 3982
Email: eastcoastgears@gmail.com | 24 Henwood Road, Pinetown, KZN

Ruspert cc t/a

RUSPET EXHAUSTS

We Muffle the Industry



MANUFACTURERS OF EARTHMOVING, TRUCK & GENSET EXHAUSTS



WE HAVE MOVED TO NEW PREMISES

TEL: 011 827 2824
011 827 2826
FAX: 011 827 2850

NO.3 DEKEMA ROAD
284 DEKEMA ROAD
WADEVILLE



www.AmPlant.co.za

SPECIALISED PLANT HIRE



Asphalt Equipment / Earthmoving Equipment
Milling Machines / Recyclers etc

Contact - Eddie Simpson
Office : 015 293 1221 ext 304 / Cell : 082 904 7694
Email : simpsons@amplant.co.za

Quality used plant for sale



ON-SITE SERVICING

JCB APPROVED TECHNICIANS

KEEPING IT GENUINE, KEEPS IT RUNNING.



CONTACT YOUR NEAREST BRANCH TODAY:

JOHANNESBURG: 011 826 6710
MIDDELBURG: 013 244 1839
PRETORIA: 012 548 2956
BLOEMFONTEIN: 051 432 3978

DURBAN: 031 700 8278
RICHARDS BAY: 035 751 2718
CAPE TOWN: 021 949 7442
PORT-ELIZABETH: 041 453 1819

EAST-LONDON: 043 732 1902
GEORGE: 044 878 0366
MTHATHA: 047 531 1688

Best Business Decision

www.kemachjcb.co.za



KEMACH JCB



www.blumaq.com

Follow us on:



Spare parts suitable for VOLVO

We offer a wide range of items with immediate delivery for your VOLVO earthmoving equipment.

Berco dealer in Spain, Zambia, Turkey and South Africa:



Contact:

+27 11 966 5092 **Johannesburg**

+26 096 0923 962 **Kitwe**

john.beukes@blumaq.com

Caterpillar®, komatsu®, cummins®, volvo® and case® are trade brands registered by their owners and are only used for reference purpose of the application of our spare parts.

Branches in Spain: Alicante | Almería | Asturias | Barcelona | Galicia | Madrid | Mérida | Ponferrada | Sevilla | Tenerife | Zaragoza
Branches in the world: Chile | United States | France | Portugal | Turkey | China | Russia | Italy | Romania | South Africa | Zambia | Peru



www.blumaq.com

Follow us on:



Following our success as **Berco** product distributor in Zambia, Blumaq South Africa has now also been appointed a distributor for this quality product in South Africa.

Blumaq South Africa now also offers **Berco quality undercarriage parts and repairs** from our operation based in Wadeville, Johannesburg.

Our fully serviced Track Undercarriage workshops offers a full service including Turning of Pins & Bushes / Re-stripping of Grouser shoes / Track Link repairs / Idler and Roller rebuilds / Track Frame Rebuilds.

Contact us today for a free on site wear assessment of your undercarriage components.

Contact:
+27 11 966 5092 **Johannesburg**
+26 096 0923 962 **Kitwe**
john.beukes@blumaq.com

Berco dealer in Spain, Zambia, Turkey and South Africa:



Caterpillar®, komatsu®, cummins®, volvo® and case® are trade brands registered by their owners and are only used for reference purpose of the application of our spare parts.

Branches in Spain: Alicante | Almería | Asturias | Barcelona | Galicia | Madrid | Mérida | Ponferrada | Sevilla | Tenerife | Zaragoza
Branches in the world: Chile | United States | France | Portugal | Turkey | China | Russia | Italy | Romania | South Africa | Zambia | Peru



www.blumaq.com

Follow us on:



Alternative spare parts for Caterpillar

We offer a wide range of items with immediate delivery for your **CATERPILLAR** earthmoving equipment.

Berco dealer in Spain, Zambia, Turkey and South Africa:



Contact:

+27 11 966 5092 **Johannesburg**
+26 096 0923 962 **Kitwe**
john.beukes@blumaq.com

Caterpillar®, komatsu®, cummins®, volvo® and case® are trade brands registered by their owners and are only used for reference purpose of the application of our spare parts.

Branches in Spain: Alicante | Almería | Asturias | Barcelona | Galicia | Madrid | Mérida | Ponferrada | Sevilla | Tenerife | Zaragoza
Branches in the world: Chile | United States | France | Portugal | Turkey | China | Russia | Italy | Romania | South Africa | Zambia | Peru

LOVOL

CONSTRUCTION EQUIPMENT

**ROBUST
RELIABLE
SUPPORTED**

The New **FR220D** Excavator



www.durasales.co.za

- **Isuzu Motor - 113 kw / 2100 rpm**
- **Kawasaki Hydraulics**
- **Operating Weight - 22 200 kg**
- **Bucket Capacity - 1.1m³**
- **5000 Hours / 12 months factory warranty**
- **Standard Piped For Attachment**
- **Full Mine Spec**
- **Full Parts Availability Guaranteed**



POWERED BY



Terms and Conditions Apply

T: +27 (0) 11 918 4760
F: +27 (0) 11 918 3102

46 Viewpoint rd.
Bartlett, Boksburg, RSA
Visit us on Facebook

Gauteng:
Coenie: (m) +27 (0) 83 251 8046
Prinsloo: (m) +27 (0) 71 611 7281
Jerry: (m) +27 (0) 82 895 5611
Curtis: (m) +27 (0) 82 359 9199
Ernest: (m) +27 (0) 79 874 5458

North West:
T: + 27 (0) 18 473 5551
Gustie: (m) +27 (0) 72 820 3744
C/o Flecker rd & Ena Murray Ave
Eastleigh, Orkney
North West, RSA

Cape Town:
T: +27 (0) 21 988 6618
Pottie: (m) +27 (0) 83 600 0729
Gerrie: (m) +27 (0) 82 950 7040
30 Klaat str,
Kraaifontein Industrial

THE TRUSTED SUPPLIER FOR ALL YOUR UNDERCARRIAGE, ENGINE & WEAR PARTS



TGS 

A Part of  Torre Industries

YOUR FIRST CHOICE

Suppliers of Replacement Parts for your Earthmoving Machinery

BRAKE DISCS, FRICTION DISCS & LININGS

BRAKE
LININGS



LINING KITS



SHOE LININGS
& BANDS



BRAKE &
FRICTION
DISCS



General Enquiries : info@tags.co.za
TGS Accounts : debtors@tags.co.za
+27 10 001 9200 | www.tags.co.za



The seat CONNECTION
Established 1991

011 452 6802
www.seatconnection.co.za
info@seatconnection.co.za
102 8th Avenue, Edenvale, 1609

New seats
Rebuilds
Repairs



ISRI 3000/350



GAMEVIEW



ISRI 6860/870 NTS

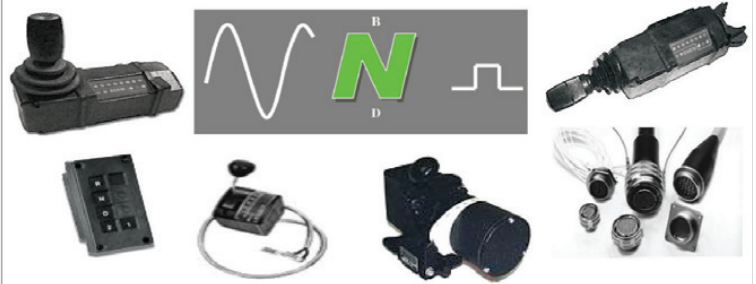


AIR SUSPENSION



Quality service, the secret to our success.

NEW BEGINNINGS DESIGNS



Replacement Parts:
Joystick Shift Selectors
Transmission Controllers
Transmission Diagnostic Tools also Available
(Dyna test transmission in vehicle)

Contact Details:
Tel: (011) 791-4120
Fax: (011) 791-5459
Cell: (011) 082 923 7987
Email: suken@nbdesigns.co.za
Website: www.nbdesigns.co.za

Visit our new website for product and service offerings.



FILTER CENTRE

Quality Lubricants
NOW IN STOCK

Leaders in Heavy-Duty Filtration



AGRICULTURE



Klenz
Pure Protection

www.filtercentre.com
info@filtercentre.com
031 700 9074





BOMAG BW212-3
Smooth drum Roller



BOMAG BW212-40
Padfoot Roller



2 x KOMATSU D51EX-22
Dozer



1 x HYUNDAI 300LC-9S
Excavator



LOWBED
Two axle trailer



KOMATSU PC200-8
Excavator



JCB 3CX 4X4
T.L.B.



Contact Stuart Mckenzie for more details:

Tel: 033 212 2181

Cell: 082 558 7901

Email: sjm@mckenzieplant.co.za

www.mckenzieplanthire.co.za



You can now find us on facebook, go to www.facebook.com/mckenzieplanthire



S. MICHELL,

THE PLANT FINDER CC

The **RIGHT EQUIPMENT** at the **RIGHT PRICE**

USED PLANT AVAILABLE



**CATERPILLAR 226B3
SKIDSTEER LOADER**

S/NO: MHW03576
SMR: 5700 HOURS
YEAR: 2011



2X JCB 3DX (4X4) TLB

S/NO: 1606298 / 1606818
SMR: 2950 / 6500
YEAR: 2014 / 2015
EXTRA'S: 2014 FORKS FITTED



**PILOT CRUSHTEC TM0605
TRAILER MOUNT IMPACT CRUSHER**

S/NO: TM0605027
ENGINE: CAT C2.2
YEAR: 2008
SMR: 75 HOURS



**EDGE SKIDSTEER MOUNT
CONCRETE BUCKET**

MODEL: 501073
S/NO: 1601309
UN-USED, HYDRAULIC
DISCHARGE GATE.



**CAT BH30 SKIDSTEER
BACKHOE ATTACHMENT**

S/NO: B3H00243
YEAR: 2001



**1 X USED JCB 3DX
(4X4) TLB**

SERIAL NO: 1606818
SMR: 6340 HOURS
YEAR: 2015

SHAWN MICHELL 082 568 4033

shawn@plantfinder.co.za / www.plantfinder.co.za

TEL: 041-379 1717 / FAX: 041-379 4753



S. MICHELL,

THE PLANT FINDER CC

The **RIGHT EQUIPMENT** at the **RIGHT PRICE**

USED PLANT AVAILABLE



CATERPILLAR PM200 MILLING MACHINE/COLD PLANER

S/NO: P1C00356
ENGINE MODEL: C18
YEAR: 2007
SMR: 3720 HOURS



KOMATSU D51EX-22

S/NO: B13163
YEAR: 2013
SMR: +-12000 HOURS



KOMATSU D51EX-22

S/NO: B12668
YEAR: 2012
SMR: 10500 HOURS



2X TATA NOVUS 3439 K5MVF MIX

YEAR: 2009
PLANT NO'S: MIX 5 & MIX 6
MILEAGE: +- 155 000 KM'S PER UNIT
SMR: +- 9500 & +-10 000 HOURS RESPECTIVELY



1 X USED BELL 315SG TLB

SERIAL NO: BTLB926917
YEAR: 2004



1 X USED JCB 3DX SUPER (4X4) DIGGER

SERIAL NO: 1487437
YEAR: 2012
SMR: 9100 HOURS

SHAWN MICHELL 082 568 4033

shawn@plantfinder.co.za / www.plantfinder.co.za

TEL: 041-379 1717 / FAX: 041-379 4753

GOOD USED EARTHMOVING PARTS AND EQUIPMENT

STM
MINING EQUIPMENT PTY(LTD)

Tel: (011)894-6192 / (011)894-3377
Fax: (011)894 7914
barney@stmmining.co.za
donovan@stmmining.co.za

Office Hrs: Mon-Fri 07h00-17h00

- ***Engines***
 - ***Engine Blocks***
 - ***Sub Assemblies***
 - ***Crankshafts***
 - ***Cylinder heads***
 - ***Engine Parts***
 - ***Undercarriage***
 - ***Frames and body***
 - ***Components***
 - ***Portable diesel
Compressors***
- 

PO Box 6456, Dunswart 1508, 40 Michelson RD. Westwood, Boksburg

www.stmmining.co.za



1 Rodio Place, Commercia, Midrand, JHB.



sales@bula-matari.com



www.bula-matari.com



MINING
COMPONENTS



(+27) 011 310 1142



REBUILT/RECONDITIONED COMPONENTS



EURORICAMBI GEARS AND SHAFTS



On The Right Track with



8 GRADER ROAD, SPARTAN

P.O. Box 10299, Edenglen, 1613, South Africa

THE EXPERTS IN UNDERCARRIAGE



UNBEATABLE WEAR TECHNOLOGY



IN STOCK:
Full Range G.E.T.



Head Office

- Tel: (011) 392 5055 / (011) 392 5056 / Fax: (011) 392 3091
Rob: 084 262 3096 / rob@centraxsa.co.za

Durban Branch

- Tel: 086 123 6872 / Cell: 083 613 0664 / Email: centraxkzn@telkomsa.net

Zimbabwe (z.s.s)

- Marco +263 466 4418/9 or + 263 772 141638 / Email: sales@gmgpower.co.za

D.R Congo Distributor

- Mike +243 82964 1842 / Email: mikek@esperco.co.za

Angola Distributor

- Jose +244 945 777 057 / Email: vtcomercial@gmail.com www.centraxsa.com



On The Right
Track with

CEN TRAX

Since 1974

8 Grader Road, Spartan Ext 3

**Springs on
track, why
shouldn't
you be?**



**EXPERTS IN
UNDERCARRIAGE
WEAR PARTS**

Head Office

- Tel: (011) 392 5055 / (011) 392 5056 / Fax: (011) 392 3091
Rob: 084 262 3096 / rob@centraxsa.co.za

**Durban Branch
Zimbabwe (z.s.s)**

- Tel: 086 123 6872 / Cell: 083 613 0664 / Email: centraxkzn@telkomsa.net

D.R Congo Distributor

- Marco +263 466 4418/9 or + 263 772 141638 / Email: sales@gmgpower.co.za

Angola Distributor

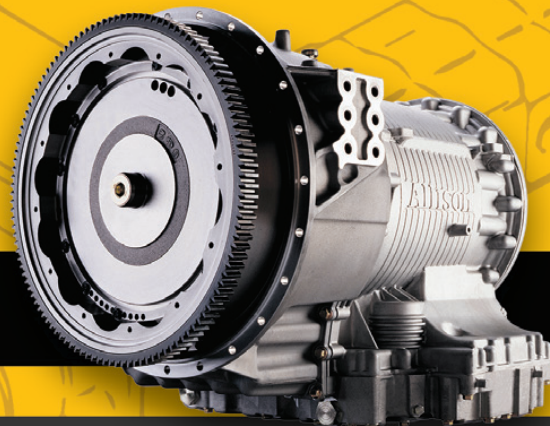
- Mike +243 82964 1842 / Email: mikek@esperco.co.za

- Jose +244 945 777 057 / Email: vtcomercial@gmail.com www.centraxsa.com



MZANTSI TRANSMISSIONS

6 Van der Bijl Street, Alrode South, Alberton



We offer specialised transmission repairs for heavy duty & on highway machines



WE OFFER SPECIALISED TRANSMISSION REPAIRS FOR HEAVY DUTY & ON HIGHWAY MACHINES

**BELL • TEREX • CAT • JOHN DEERE
HITACHI • DAEWOO • ZF • ALLISON • CLARK • FUNK**

We offer dyno testing on the following boxes:

**ZF - 4WG92, 4WG94, 4/6WG180/200/210/310
Allison - MD3560, HD4560**

**WE PURCHASE
2ND HAND TRANSMISSIONS**

**Bell B17B, B20B, B25B, 1206 & B40D
Transmissions in stock**

Email: info@gearboxes.me | Tel: 011 868 5130 | Fax: 086 634 7904 | Cell: 071 684 5784

Earthmoving Specialist

Old & New
Generation Experience



WE SPECIALIZE IN CUMMINS ENGINES

Full Diagnostic
Troubleshooting

**REPAIRS, SPARES
& MAINTENANCE TO
LEADING EARTHMOVING
MACHINERY**

Carlos Caroto: 079 519 6769 | Email: jennycaroto@live.co.za

Earthmoving Specialist



**OLD & NEW
GENERATION EXPERIENCE**



FULL DIAGNOSTIC TROUBLESHOOTING

**REPAIRS, SPARES & MAINTENANCE TO
LEADING EARTHMOVING MACHINERY**

SPECIALISING IN: CAT ECPC, ICM COUNTERSHIFT
& POWERSHIFT TRANSMISSION REBUILDING

Carlos Caroto: 079 519 6769 | Email: jennycaroto@live.co.za



GFA

Gears for Africa

WE MOVED TO BIGGER PREMISES
145 Lamp Road, Wadeville
Germiston

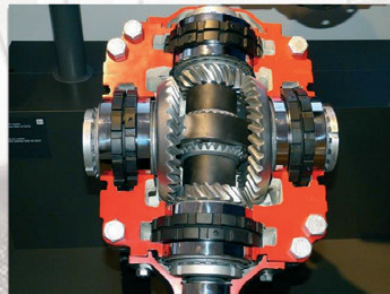
OUR QUALITY COMPARES 100 % TO ANY OEM SPARE MANUFACTURES

MANUFACTURE OF SPIRAL BEVEL GEARS NOW AVAILABLE

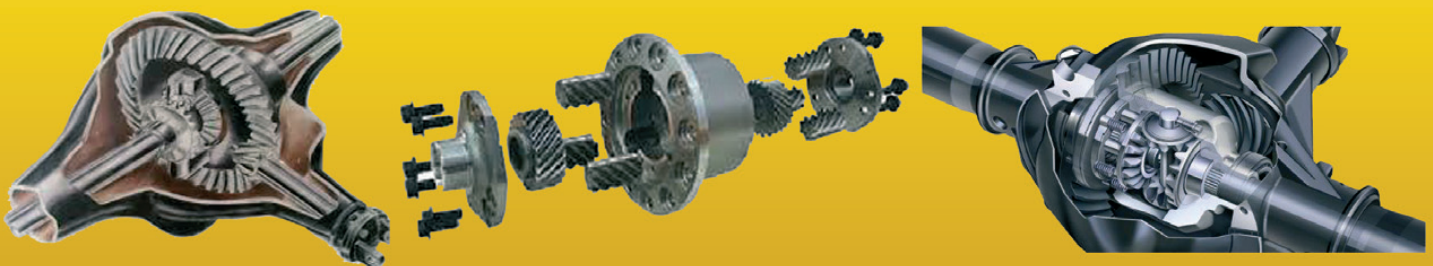


Gears for Africa products include all types of gears, sprockets, splines and related product for industrial and heavy duty equipment and practically all applications related to power drive systems:

- *Bevel Gears*
- *Spur Gears*
- *Worm Gears*
- *Helical & Internal Helical Gears*
- *Crown Gears*
- *Internal & External Splines.*



**CROWN WHEEL AND PINION, PLANETARY , SUN AND RING GEARS
FINAL DRIVE GEARS, DIFF HOUSINGS SPIDER CROSS KITS, SPIRAL BEVEL GEARS**
**FOR THE MINING, RAIL, HEAVY EARTH MOVING, BUILDING,
AND AGRICULTURAL INDUSTRIES**



Cape Town Branch
Tel: 021 577 1030
Fax: 021 577 1131

www.gearsforafrica.co.za

JHB Branch
Tel: 011 824 2017
Fax: 011 420 3314



● Seals ● Bearings ● Hydraulic Components

<p>Unit 6, Hillman Mini Factories, Cnr Lancaster & Burnley Rd, Benoni South, 1503 P.O. Box 6200 Dunswart, Boksburg 1508 Tel: (011) 420-1003 Fax: (011) 420-1875 sales@onesp.co.za</p>	●	<p>3 Lunsemfwa Drive, Plot No 4625, Riverside Kitwe, Copperbelt, Zambia PO Box 20763 Kitwe, Zambia, ZIP 10101 TPIN: 1003813765 Dial: 00260950171345 00260968337877</p>
---	---	---

Seals:

- Earth moving cylinder kits
- Hydraulic seals
- Pneumatic seals
- Oil seal
- O rings
- D rings
- Torric/duo cone/face seals

Bearings:

- Spherical plain bearings
- Spherical roller bearings
- Deep groove ball bearings
- Thrust bearings
- Taper roller bearing
- Needle bearings

Plastic engineering:

- Custom seal manufacturing
- Valve seats
- Bellows
- PTFE balls
- Pressure pads
- Sheeve wheels
- Rail slides

Components/Miscellaneous:

- Pins
- Bushes
- Cylinder bolts/washers
- Hydraulic glands
- Custom pattern making
- Castings

Brands we stock:



Brands we stock:



Plastics we stock/machine:

- Nylon
- PTFE
- Bronze impregnated PTFE
- Carbon impregnated PTFE
- Glass impregnated PTFE
- Tufnol
- Polyurethane
- All other engineering plastics

Through our network we can also offer a wide range of service exchange hydraulic cylinders

YOUR EARTHMOVING COMPONENT SPECIALIST



Scott : +27 72 565 4920
scott@prearthmoving.com

Ladis : +27 10 823 7322
ladislas.l@pandrearthmoving.com

Greg : +27 10 823 6276
greg@prearthmoving.com

Grant : +27 10 823 8821
grant@prearthmoving.com

No. 170 - 3rd Avenue, Bredell
Kempton Park, 1619. South Africa

ATTACHMENTS • AXLES • BREAK GROUPS • CYLINDERS • ENGINES • FINAL DRIVES • G.E.T.



VARIOUS CABS



VARIOUS DIESEL TANKS



VARIOUS AXLES



VARIOUS AXLES



VARIOUS CYLINDERS



CAT TH460B



WA 600-8



D11R



FRONT CORNERS



D11R & D8R



VARIOUS CYLINDERS



VARIOUS CYLINDERS



HM400-3



HM400-3



LIEBHERR 45TON CRANE

HYDRAULIC PUMPS • NEW PARTS • POWERTRAINS • TRANSMISSIONS • UNDERCARRIAGE

YOUR EARTHMOVING COMPONENT SPECIALIST www.prearthmoving.com

RHINO Excavator Hammers cc

Reg. No. 2008/152815/21

SOLE DISTRIBUTORS FOR



IN AFRICA



XCENTRIC **RIPPER**



**Rock Wheel
Cutter**



Ripper



Quick Coupler

CONTRACT MINING



RHINO Earthmovers cc

**Stripping CAT 330D incl A cert C9 engine,
Hitachi ZX330 incl Isuzu 6HK1 engine, JCB 3CX**

Tel: 0861 11 5422 | Fax: +27 11 801 4926 | Cell: 071 670 8707 | 082 887 8636
sales@rhinohammers.co.za | hire@phplant.co.za | www.rhinohammers.co.za | www.phplant.co.za

**We also hire: Excavators & TLB's
with the above attachments**



TOUGH EQUIPMENT FOR A TOUGH WORLD.

FOR ALL INTENTS AND PURPOSES IN AFRICA



South Africa Official Dealer
011 979 3636
www.burgersafrica.com

Liugong South Africa
Tel 011 979 0971
www.liugong.com





SHIN LI
TRADING ©



*We Specialise in
Japanese & Korean
Earthmoving Spares*

ENGINE SPARES

Liner Kits, Gasket Kits, Valves & Guides,
Water Pumps, Oil Pumps, Crank & Cam Shafts,
Engine Bearings & Bushings



Mitsubishi
Komatsu
Doosan
Nissan
Isuzu
Hino

HYDRAULIC PARTS

Kawasaki Pumps

New and Complete



Final Drives

20 Ton Excavator
Final Drive Parts
& Complete Units



Komatsu Gear Pumps

Transmission Pumps
Steering Pumps
Main Pumps



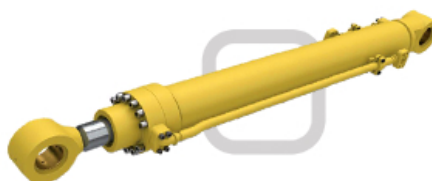
Kawasaki Rotating Groups

K3V and K5V Series
Inner Parts
Rotating Groups
Seal Kits



Komatsu Cylinders

Complete Cylinders
Seal Kits



WWW.SHINLITRADING.CO.ZA

Email:

sales@shinlitrading.co.za (Chris)
sales2@shinlitrading.co.za (Wimpie)
sales3@shinlitrading.co.za (Martin)
sales4@shinlitrading.co.za
sales5@shinlitrading.co.za (Steven)

Address:

67 High Road
Bredell A/H
Kempton Park
Tell: 011 396 1081
011 552 5900 /1/2
Fax: 086 666 2537



Working hard, so you don't have to.

WWW.SHINLITRADING.CO.ZA

UNDERCARRIAGE

Track Links



Sprockets



Idlers



Track & Carrier



Rollers

Track Plates



Bolts & Nuts

**Genuine Hyundai
20 Ton Track Frames**



FOR SALE !

Address: 67 High Road
Bredell A/H
Kempton Park
Tell: 011 396 1081
011 552 5900 /1/2
Fax: 086 666 2537

Scan the QR Code
to see our website:



**SHIN LI
TRADING** ©



All Africa Supplies

GLOBAL REACH - LOCAL SUPPLY

www.allafricasupplies.net

011 918 9976



CARRARO

HITACHI

VOLVO

Construction Equipment



HYUNDAI
HEAVY INDUSTRIES CO.,LTD.

ISUZU

KOMATSU

*All manufacturers names, numbers, symbols and pictures are for reference only. It does not imply that any of the parts are the product of these manufacturers.



Doosan 340
Stripping for Parts



B25D stripping



Doosan DA30
Stripping for parts



B35D & B40D
Stripping for parts



CAT C9 Engine



CAT 3176
Rebuilt



Iveco engine
parts & rebuilds



Swing Pinion
Shafts



Engine parts &
components



B30D & B40D
Main Pumps
exchange



PC200-7
alternators



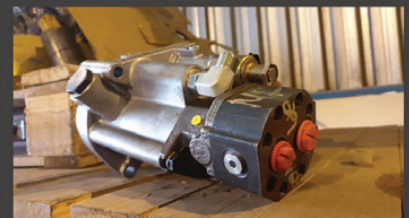
A10V45/75
Pumps



CAT 320 & 330
Main Pumps



Kawasaki
Swing Drives



3126B Hui
Pumps



B35D & B40D
Transmissions



Perkins
engine
parts



CAT steering
clutch rebuilds



Komatsu WA600 pumps



Komatsu
6D105
water pumps

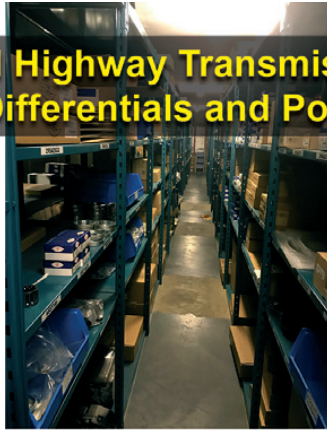


PC200-6/7/8
final drives

All Africa Supplies Pty Ltd

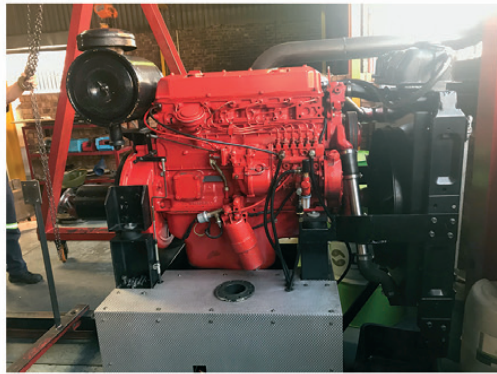
228 All Black Road Anderbolt Boksburg

Repairs to all OFF and ON Highway Transmissions, Torque Convertors, Gearboxes, Differentials and Power Take Off's



VORTEX TRANSMISSIONS

Tel: 011 452-4430/1
 Parts: 011 452 3296 / 452 3390
 Johan: 082 333 1005
 Jan: 082 333 1004
 Fax: 011 609 5302
 Email: vortex3@mweb.co.za



Allison Fuller • Clark • Caterpillar • Funk Twin Disk



SERVICE UNITS:

- AT 545 bell (spec)
- MT 643 bell (spec)
- MD 3560 P TID 2
- MD 3560 P TID 3
- MD 3060 TID 3
- 4500 ORS GEN 4
- 4500 ORS R GEN 4 LIFE FILTER Bell B40D
- 4500 ORS R GEN 4 Bell B50E
- Terex engine PTO 'S TR 60
- Euclid and Terex transmission PTO'S
- Euclid 6610A CEC2
- Terex 6610AR CEC 2
- Euclid 6620A

UNITS THAT WE ALSO DO:

- Bell grader transmissions
- Cat transmissions
- Funk transmissions
- Terex & Euclid Differential center portions
- Bell differential center portion
- Chelsea PTO'S
- Terex engine PTO'S TR 100

Vortex Transmissions sell genuine Allison parts for all our transmissions Dyno testing is done in house and all transmissions that are tested have test reports

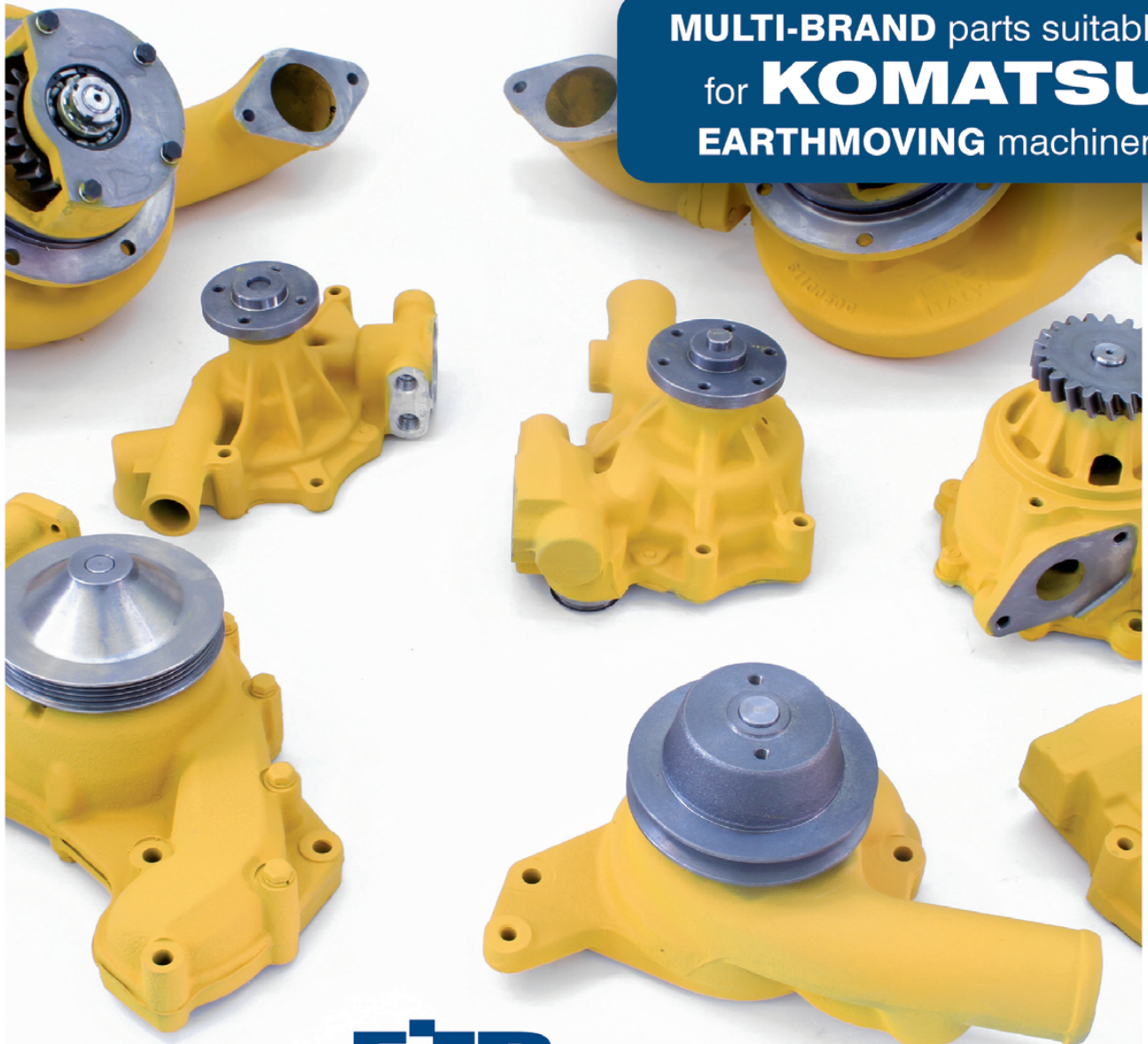


www.espa.co.za



ESP THE PROVEN ALTERNATIVE

MULTI-BRAND parts suitable for **KOMATSU** EARTHMOVING machinery



ETP

BENEFIT FROM OUR 9 MONTHS WARRANTY PERIOD ON NEW PARTS

ESP Johannesburg
Tel: (011) 398-1700

ESP Benoni
Tel: (011) 845-2911

ESP Pretoria
Tel: (012) 804-6706

ESP Middelburg
Tel: (013) 246-2520

ESP Pinetown
Tel: (031) 705-4200

ESP Cape Town
Tel: (021) 945-1030

ESP Port Elizabeth
Tel: (041) 484-4575

ESP Bloemfontein
Tel: (051) 432-4501

ESP Kimberley
Tel: (053) 831-8349



ISO 9001 Certified

Manufacturers' names, numbers, symbols and descriptions are used for reference purposes only and it is not implied that any part listed is the product of the manufacturers.

www.espa.co.za



ESP THE PROVEN ALTERNATIVE

MULTI-BRAND parts suitable for **KOMATSU** EARTHMOVING machinery



BENEFIT FROM OUR 9 MONTHS WARRANTY PERIOD ON NEW PARTS

ESP Johannesburg
Tel: (011) 398-1700

ESP Benoni
Tel: (011) 845-2911

ESP Pretoria
Tel: (012) 804-6706

ESP Middelburg
Tel: (013) 246-2520

ESP Pinetown
Tel: (031) 705-4200

ESP Cape Town
Tel: (021) 945-1030

ESP Port Elizabeth
Tel: (041) 484-4575

ESP Bloemfontein
Tel: (051) 432-4501

ESP Kimberley
Tel: (053) 831-8349



ISO 9001 Certified

Manufacturers' names, numbers, symbols and descriptions are used for reference purposes only and it is not implied that any part listed is the product of the manufacturers.

www.espa.co.za

ESP THE PROVEN ALTERNATIVE



MULTI-BRAND parts suitable for **KOMATSU** EARTHMOVING machinery



BENEFIT FROM OUR 9 MONTHS WARRANTY PERIOD ON NEW PARTS

ESP Johannesburg
Tel: (011) 398-1700

ESP Benoni
Tel: (011) 845-2911

ESP Pretoria
Tel: (012) 804-6706

ESP Middelburg
Tel: (013) 246-2520

ESP Pinetown
Tel: (031) 705-4200

ESP Cape Town
Tel: (021) 945-1030

ESP Port Elizabeth
Tel: (041) 484-4575

ESP Bloemfontein
Tel: (051) 432-4501

ESP Kimberley
Tel: (053) 831-8349



ISO 9001 Certified

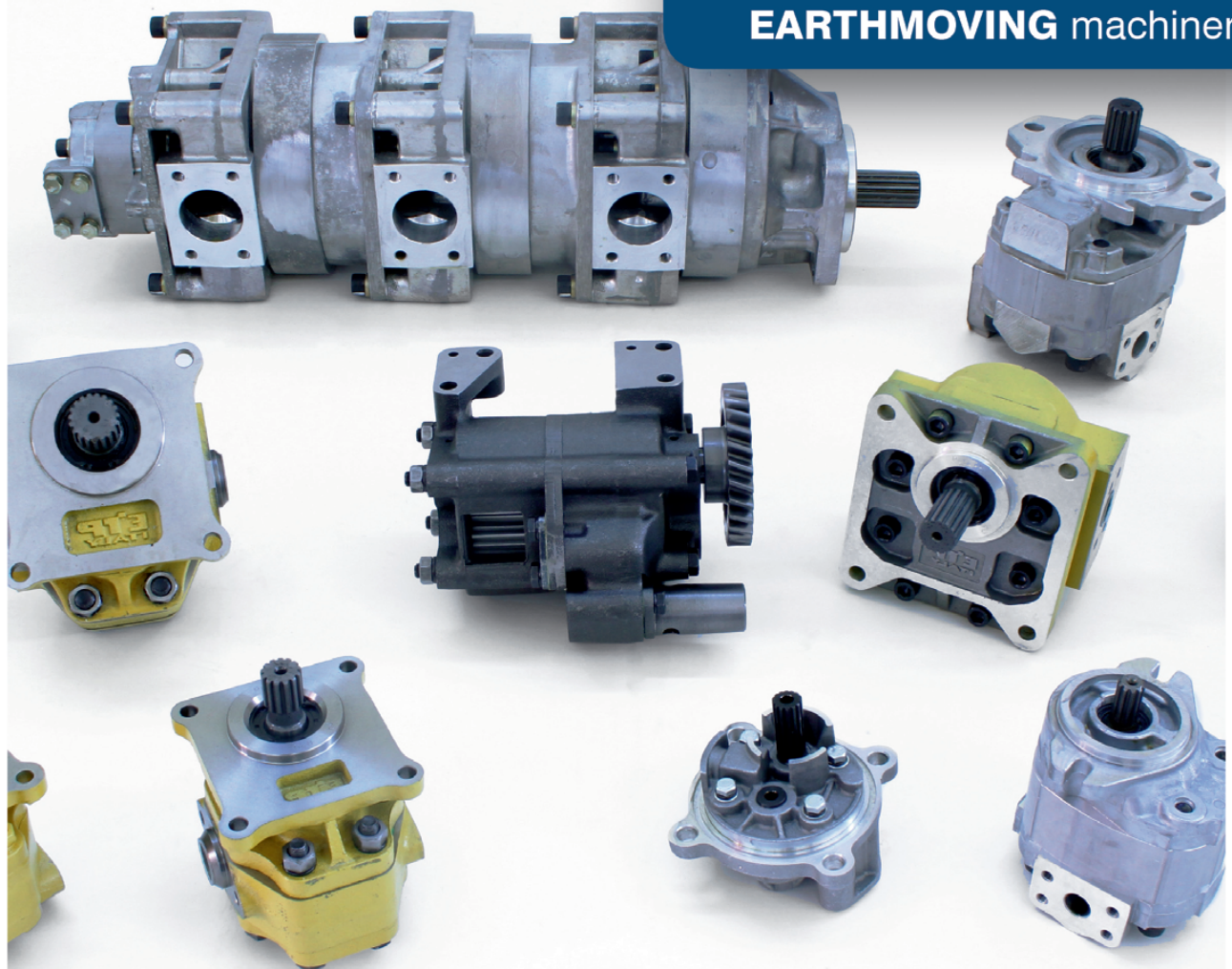
Manufacturers' names, numbers, symbols and descriptions are used for reference purposes only and it is not implied that any part listed is the product of the manufacturers.

www.espa.co.za

ESP THE PROVEN ALTERNATIVE



MULTI-BRAND parts suitable for **KOMATSU** **EARTHMOVING** machinery



ETP

BENEFIT FROM OUR **9 MONTHS** WARRANTY PERIOD ON NEW PARTS

ESP Johannesburg
Tel: (011) 398-1700

ESP Benoni
Tel: (011) 845-2911

ESP Pretoria
Tel: (012) 804-6706

ESP Middelburg
Tel: (013) 246-2520

ESP Pinetown
Tel: (031) 705-4200

ESP Cape Town
Tel: (021) 945-1030

ESP Port Elizabeth
Tel: (041) 484-4575

ESP Bloemfontein
Tel: (051) 432-4501

ESP Kimberley
Tel: (053) 831-8349



ISO 9001 Certified

Manufacturers' names, numbers, symbols and descriptions are used for reference purposes only and it is not implied that any part listed is the product of the manufacturers.

YANMAR

WORLD RENOWN COMPACT EXCAVATORS

Models available
from 1 to 10 tons

- Powered by Yanmar
- Built by Yanmar
- Zero Tail Swing
- Hydraulic Quick Coupler
- PTO fitted standard
- Steel or rubber tracks
- Cab or ROPS canopy
- Airconditioner option
- Cylinder protection
- Dozer blade & boom swing
- Light & travel alarm
- 15 YRS IN SOUTH AFRICA

Western Cape
FORCE 8 CC (Importers)
Phone 021 535 1117
www.force8.co.za

Gauteng
RAPTOR PLANT SALES (PTY) LTD
Phone Clive on 073 500 3761
www.raptorplantsales.co.za

Eastern Cape
CHALK AIR CC
Phone 043 743 8855
Please speak to Zane

Mpumalanga
RUDAMANS (PTY) LTD
Phone 013 753 3631
www.rudamans.co.za

West Coast
WESKUS MEGANISASIE CC
Phone 027 213 3277
Kobus 081 415 4409

Breede River Valley
LANGEBERG GRONDWERKE CC
Phone 023 626 2563
Danie 084 491 0916

www.yanmar.co.za



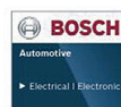
EARTH MACH
 TEL : 017 843 2072
 CELL: 083 232 8713
 WWW.EARTHMACH.CO.ZA

MINING AND CONSTRUCTION EQUIPMENT

**SPECIALISING IN GALLION,
 DRESSER, KOMATSU,
 SEM & CATERPILLAR**



**AUTO ELECTRICAL
 REPAIRS**



Q&Oils
 Refined thinking, smart solutions

REPAIRS ON ALL TYPES OF EQUIPMENT CUMMINS ENGINE CONVERSION ON
 KOMATSU TLB'S REPAIR AND SUPPLY NEW RADIATORS BRAKE & CLUTCH REPAIRS
 GENERAL REPAIRS AND REBUILDING AUTO ELECTRICAL REPAIRS & REWIRING
 FUCHS OILS & GREASES FIELD SERVICE REPAIRS AND SERVICES



SEM
 A Caterpillar Brand

**THE PERFORMANCE YOU NEED.
 THE SUPPORT YOU EXPECT.**



GENIUNE SEM PARTS QUALITY AT ITS BEST

Steyn St. 34, Carolina, 1185.
 PO Box 1446, Carolina 1185
 Tel. (017) 843 2072 Fax. 086 732 1739
 Cell. 083 232 8713

chris@earthmach.co.za
www.earthmach.co.za
 VAT REG No. 4280260417
 BBEE Level 2



NO STONE UNTURNUED

WEARPACT EXCEED
EXPECTATIONS IN
GLOBAL PART SOURCE
AND SUPPLY

MANUFACTURERS, SUPPLIERS AND STOCKISTS OF:

**CUTTING EDGES | MOLD BOARD LINERS | GRADE BLADES
TIPS AND ADAPTORS | RIPPER SHANKS | END BITS**

**WE MANUFACTURE, SUPPLY AND STOCK G.E.T. FOR:
CAT | KOMATSU | VOLVO | HITACHI | BELL | LIEBHERR | JCB | CASE
TEREX | FURUKAWA | LUI-GONG | SANY | SANYO | SHANTUI | FIAT**

WEARPACT ALSO OFFERS A SPECIALIST BUCKET REPAIR SERVICE

WEARPACT

☎ 011 421 4705 / 011 845 3234 / 011 845 3272

☎ 011 421 8761

✉ mwwrp@mweb.co.za

*MANUFACTURER'S NAMES, NUMBERS & DESCRIPTIONS ARE USED FOR REFERENCE PURPOSES ONLY. IT IS NOT IMPLIED THAT ANY PART LISTED IS THE PRODUCT OF THE MANUFACTURERS.

www.wearpact.co.za

Don't let the sun set on your TLB.
We have the parts for you.

**Quality.
Service.
Price.**



+27 (0)861 888 008
+27 (0)83 327 3237 A/H

LNE@LNE-AgriEarth.com
[f @LNEAgriEarth](https://www.facebook.com/LNEAgriEarth)

www.LNE-AgriEarth.com

 **CARRARO**
Spare Parts
Authorized Dealer

DOZER

EARTHMOVING (PTY) LTD

YOUR EQUIPMENT AND COMPONENT SPECIALIST

TEL : +27(0) 11 452-1224 / AFTER HOURS : +27(0) 82 441-2895



CAT 769D SALE



CAT 773E SALE



CAT 777F RENT/LEASE



CAT 777F RENT/LEASE



CAT 725 SALE



CAT 725 SALE



CAT 725 LUBE RENT/LEASE



CAT 824G/834B RENT/LEASE



CAT 834B SALE



CAT 938H SALE



CAT 962H SALE



CAT 962H SALE



CAT 966H SALE



CAT 988B SALE



CAT IT14G SALE



CAT 725 PARTS



CAT 730 PARTS



CAT 740 PARTS



CAT 769D PARTS



CAT 773D PARTS



CAT 773E PARTS



CAT 777D PARTS



CAT 777F PARTS



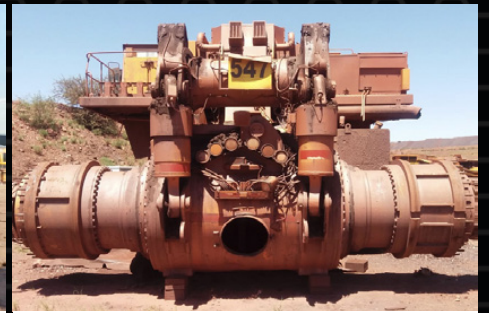
CAT 785D PARTS



CAT 789C PARTS



CAT 824G PARTS



HAULPAK 730E PARTS



CAT D8T/R PARTS



CAT D10T/R PARTS



CAT D11T/R PARTS

**www.dozer.co.za | info@dozer.co.za or sales@dozer.co.za
21 Simba Street - Sebenza - Edenvale - Johannesburg -
Gauteng - South Africa - P.O. Box 355 Isando 1600**



CAT 428E REAR AXLE



BELL B25D OM906



CAT 318C FINAL DRIVE



CAT 416F COMPLETE BACKHOE



CAT 428E FRONT AXLE

**FOR SUPERIOR QUALITY PARTS
ON ALL MAJOR BRANDS**

Cnr. Michigan & Manchester
Streets, Airport Industria,
Cape Town, South Africa

P +27 21 386 4190/1/2/3/4
F +27 21 386 4195
www.ctcplant.com





Transand

MACHINES FOR **SALE**



LIEBHERR 538 LOADER
2012 MODEL
(AUTOMATIC GREASING SYSTEM AND L5 TYRES)
R 350 000 + VAT



LIEBHERR R924B EXCAVATOR 27 TON
2004 MODEL
(NEW GROUSER SHOES)
R 350 000 + VAT



LIEBHERR R914B EXCAVATOR 24 TON
2004 MODEL (NEW LINK ASSEMBLYS AND GROUSER SHOES)
R 250 000 + VAT



BELL B20C DUMPER
(Not Registered)
R 450 000 + VAT



VOLVO L90E LOADER
2005 MODEL
(AUTOMATIC GREASING SYSTEM AND L5 TYRES)
R 350 000 + VAT



BELL B20D DUMPER
(Not registered)
R 450 000 + VAT



MERCEDES-BENZ 2628 TIPPER TRUCK
MODEL 407 SERIES
R 220 000 + VAT



MERCEDES-BENZ 2628 TIPPER TRUCK
MODEL V SERIES
R 300 000 + VAT

CONTACT



Francois Gerber

082 454 0934
charlesjnr@transand.net
044 695 0105

TRANSFER CASES

REBUILDS, REPLACEMENTS & EXCHANGE SINCE 2001



Our brand new specialised facilities boast complete rebuild departments for Transfer cases, Transmissions, Differentials and Hydraulics, making us your one-stop-shop for all earthmoving driveline requirements.

Our Dyno Testing facilities ensure that our re-build units are fully functional and tested before they are dispatched to you.

Whether you need a single part, a complete re-build or a service exchange unit, we keep your plant in motion.



KEEPING YOUR PLANT IN MOTION

info@pttech.co.za • www.pttech.co.za • TEL: +27 11 022 8570 • FAX: +27 86 615 9011
NEW ADDRESS: 529 Pretoria Road, Fairleads, Benoni

VENDEL EQUIPMENT SALES (PTY) LTD | T/A ASSOCIATED EQUIPMENT

P O Box 3716, Honeydew, 2040
 Telephone: +27 (11) 801 4911/2
 Reg. no: 2013/000179/07
 associated1@xnet.co.za

JAAP +27 (0)82 892 1327
ANTON +27 (0)082 923 5397
CHRIS +27 (0)83 626 5588
LORAINNE +27 (0)76 021 4344

Plot 92 Indaba Lane-off Beyers Naude,
 Rietfontein, Roodepoort 2040
 Fax: +27 (11) 801 4914
 associatedloraine@xnet.co.za



WE ARE BUYERS FOR YOUR REDUNDANT EQUIPMENT



1 x Caterpillar 323D Excavator 2007
 1 x Komatsu PC 220-8 Excavator -2011
 4 x Caterpillar 320D Excavator 2014/2010
 2 x Komatsu PC200-8 Excavator 's
 1 x Cat 329D Excavator - 2014



3 x Cat 938K FEL's 2014
 2 x Cat 950H FEL's 2013
 1 x SDLG 948L FEL 2012 Model
 1 x Cat 966H FEL - 2014
 1 x Cat 980H FEL - 2014



1 x Caterpillar CS76XT SD Roller 17 Ton
 1 x Unused Case 1107DX SD Roller
 1 x Dynapac CS 142N 3 Point Roller 13Ton
 4 x Hamm 3411 SD Roller's 2013/2005



3 x Hamm GRW18 PTR - 2009/2006
 1 x Hamm GRW280-24 PTR -2011
 2 x Cat PF-300C PTR- 2006
 1 x Ingersoll Rand - 27 Ton



4 X Etnyre K Chip Spreader's
 1 x Tecon T -15Ton Grid Roller
 2 x Grid Rollers Refurbished
 1 x Bitelli Paver BB670



2 x Caterpillar 140H Motor Graders
 Refurbished
 1 x XCMG Motor Grader with Ripper



6 x Caterpillar 140G Motor Graders
 with Rippers Refurbished
 2 x Caterpillar 120G Motor Graders
 Refurbished



2 x Cat 428F 4x4 TLB's 2012/2013
 1 x Cat 422E 4x4 TLB 2007
 1 x JCB 3CX 4x4 TLB -2008



3 x Benford TV1200 Sit on Rollers 2008
 1 x Cat CB224E DDV Roller
 1 x Bomag BW80 ADH-2 DDVR- 2011
 1 X Ammann AV12-2 DDVR - 2011



1 x Hamm 3520 Smooth Drum Roller
 20 Ton 2012 Model
 1 X Cat CS533E Vibrating Roller



1 x JCB 540-170 Telehandler -2008
 1 x JCB 535-125 Telehandler 2010
 1 x Pcat TW30 3 Ton Forklift - 2018
 1 x ACE Mobilift



NEW TYRE'S
 17.5x25 Rock Grip L4, 23.5x25 L3,
 17.5x25 L3, 20.5x25 L3 26.5x25 L3
 23.1x26 (Rollers) 12.5x80x18 16.9x28



4 x Iveco Trakkers 8x4
 with 18m aluminium Alutip tipper
 2010 - 2009 models



1 x Mercedes Bens
 Atego 1518- 54 Drop side Truck
 2013 Model



1 x Bomag BW219PD04 Roller-2014
 2 x Bomag BW212D PF Roller 's
 1 x Hamm 3411 PD Roller



1 x Benford 3 Ton Dumpers - Swivel
 2 x Benford 6 Ton Dumpers Swivel



1 x Terex TA30 A.D.T
 1 x Mercedes Benz 1113 4x2
 with Hiab 600 Crane
 Price R130 000.00 + vat



1 x Atlas Copco QAS-100KVA
 Generator 2011 Model
 2 x Atlas copco compressors
 from 190 CFM up to 1000 CFM



1 x Komatsu D65E-12 Dozers -2008
 1 x Cat D5N Dozer - 2006 Model
 new undercarrige refurbished



1 x Cat D5N Dozer with
 new undercarrige Refurbished
 1 x Komatsu D65E-12 Dozers
 with ripper 2008

GPS CO-ORDIANATES: **S26°3'56.343 - E37°52'37.453**

www.associatedequipment.co.za / www.vendelequipmentsales.co.za



AFRICA'S LEADING EARTHMOVING EQUIPMENT & PARTS DEALER

www.blcplant.com ☎ +27 11 555 2000 ✉ info@blcplant.com

PLANT

PARTS

RENTAL



**OVER 600
MACHINES
IN STOCK**



HYDRAULIC EXCAVATORS

CAT 320D, 325D, 329D, 330D, 336D, 345D, 349D, 365C, 374D/F, 385C, 390D/F



DOZERS

CAT D6R, D6T, D7R, D8R, D9R/T, D10T, D11T



RIGID DUMP TRUCKS

11 X CAT 777D



MOTOR GRADERS

CAT 140G, 140H, 140K, 14H, 16G



ARTICULATED TRUCKS

BELL B40D, B35D



ARTICULATED TRUCKS

CAT 725, 730, 740, 740B, 745C



LIEBHERR EXCAVATORS

2 X 2012



KOMATSU WATER TANKER

HM400 35000L



KOMATSU BULL DOZERS

275'S (1 X 2007; 4 X 2008; 2 X 2009)



TRACTOR LOADER BACKHOES

CAT 428F, 428F2, 426F, 450E



COMPACTION ROLLERS

BOMAG BW212-3, BW213D, BW219-3
CAT CS533, CP 533E, CS563E, CS76



FRONT END LOADERS

CAT 950H, 950GC, 966H, 962H, 972H, 980H, 988G

**LARGEST STOCK OF
PARTS IN THE
SOUTHERN HEMISPHERE**

Service exchange units available.

6 MONTHS WARRANTEE
on refurbished components.

View all our available
stock on our website
www.blcplant.com



BLC Plant purchases earthmoving equipment for stock, rebuilds it as required in the fully equipped on-site workshops and then sells it to users in various industries. We focus on delivering products which meet customer specifications, offer buyers a viable alternative to new equipment and provide excellent after sales service and support.

PLANT

PLANT – STOCK READY TO GO



CAT 277D SKID STEER



TADANO TR250M-6 RT CRANE



DOOSAN EXCAVATOR



**KOMATSU
HM400 35000L WATER BOWSER**



120T LOW BED



CAT 120H MOTOR GRADER



CAT 966L FRONT END LOADER



CAT 140M MOTOR GRADER

TRUCKS – STOCK READY TO GO



MERCEDES 3331 ROCK BIN



MERCEDES 3331 HEAVY DUTY BIN



MAN 26-280 10M3 TIPPER NEW



TATA 2528 10M3



MERCEDES 3335 10M3



NISSAN UD 330D 16000L WATER



MERCEDES 2628 CRANE 12 TON METER



MERCEDES 3340 CRANE 15 TON METER

Call us now **+27 (0)11 555 2000** or visit **www.blcplant.com** for our latest stock.



Largest stock of parts in the southern hemisphere. Service exchange units available. **6 Months warranty on refurbished components.**

www.blcplant.com

+27 11 555 2000

info@blcplant.com

Corner Wynberg Road and 2nd Avenue, Kew

PARTS

STRIPPED OVER 3000 CAT MACHINES FOR STOCK



CATERPILLAR
Dozer Engines



CATERPILLAR
Dozer Final Drives



CATERPILLAR
Grader Transmissions



CATERPILLAR
Loader Axles



CATERPILLAR
Loader Transmissions



CATERPILLAR
Grader Axles



CATERPILLAR
Transfer Box



CATERPILLAR
Off Highway Transmissions

Call us now +27 (0)11 555 2000 or visit www.blcplant.com for our latest stock.



Garage Equipment Service (Pty) Ltd.

Quality Products ~ Quality Service

www.ges.co.za

**Established for
over 70 years**



Garage Equipment Service

Suppliers of :

- ~ Customised field service vehicles,
- ~ Container Lube & Workshop units
- ~ Hydraulic / Engine driven Compressors,
 - ~ Workshop lube bays
- ~ Computerised oil monitoring systems
- ~ Compressors & air reticulation systems
 - ~ Pneumatic tools & tyre inflation
 - ~ Nitrogen Tyre Plants,
- ~ Automatic vehicle wash systems,
- ~ Roadworthy testing equipment,
- ~ Exhaust gas extraction equipment
- ~ Car, Bus & truck lifts - fixed & mobile
- ~ Hydraulic jacks & equipment, and
- ~ Tyre bay equipment.



GAUTENG

46 Dawe Street, Troyeville
Johannesburg
Tel: (011) 402 6277

CAPE

Unit 3 Vinyards, Cincant Crescent
Saxenburg Park, Cape Town
Tel: (021) 905 6366

KWAZULU NATAL

114 Gale Street,
Durban
Tel: (031) 301 5861

CAPE TOWN BRANCH



QUALITY EQUIPMENT ON YOUR DOORSTEP

FIELD SERVICE SUPPORT



PRODUCT SUPPORT

PARTS WAREHOUSE

ULTRA-MODERN WORKSHOP

STOCK AVAILABLE

WHEEL LOADERS



GRADERS



TELEHANDLERS



EXCAVATORS



ADT's



TLB's



LOVOL

CONSTRUCTION EQUIPMENT

EXCAVATORS AND LOADERS NOW AVAILABLE

T: +27 (0) 21 988 6618

Visit our showrooms in:

Contact the sales team:

30 Kiaat Street,
Kraaifontein Industrial
Kraaifontein
Western Cape

Western Cape: +27 (0) 21 988 6618
Gauteng: +27 (0) 11 918 4760
North West: +27 (0) 72 820 3744
KwaZulu Natal: +27 (0) 31 705 1770

Pottie: +27 (0) 83 600 0729 pottie@durasales.co.za
Charmaine: +27 (0) 82 777 1544 charmaine@durasales.co.za
Gerrie: +27 (0) 82 950 7040 gerrie@durasales.co.za

WWW.DURASALES.CO.ZA



AFFORDABLE. RELIABLE. TRUSTED.

WWW.DURASALES.CO.ZA



2008 CAT RM300
3753 HOURS



2 x BROCE RCT 350
REFURBISHED UNITS



2003 KAWASAKI Z80
REFURBISHED



2009 CAT 966H
13829 HOURS



2019 1000L DIESEL BOWSER



2014 CAT 908H-2
2848 HOURS



NEW LOVOL FL936-II
3000 HOURS/ 24 MONTHS WARRANTY



NEW LOVOL FL958-II
3000 HOURS/24 MONTHS WARRANTY



NEW LOVOL FL966-II
3000 HOURS/ 24 MONTHS WARRANTY



2008 CAT 428E
REFURBISHED



2014 CAT 140K
5421 HOURS



2012 BELL 3155J
6149 HOURS

Visit our website on www.durasales.co.za for the updated stock.

T&C APPLY

Dura Equipment Sales - Gauteng

46 Viewpoint Road, Bartlett, Boksburg, RSA

Tel: +27 11 918 4760
Coenie: +27 83 251 8046
Prinsloo: +27 71 611 7281
Jerry: +27 82 895 5611
Curtis: +27 82 359 9199
Ernest: +27 79 874 5458

Dura Equipment Sales - Cape Town

30 Klaat Street, Kraaifontein, Western Cape, RSA

T: +27 21 988 6618
Pottie: +27 83 600 0729
Charmaine: +27 82 777 1544
Gerrie: +27 82 950 7040



AFFORDABLE. RELIABLE. TRUSTED.

WWW.DURASALES.CO.ZA



1998 BELL B20C



1999 BELL B25C
23000L WATER TANKER



2000 BELL B25C



2008 BELL B20D
5 x AVAILABLE



2 x 2005 BELL B40D
19800 HOURS



2011 BELL B30D
15300 HOURS



1995 MERC 2629 POWERLINER



BOMAG BW213DH-4



2008 HAMM HD75
5634 HOURS



2002 BELL B20D
18000L WATER TANKER



2007 JCB 535-125
5205 HOURS



2010 HAMM HD140
3519 HOURS

Visit our website on www.durasales.co.za for the updated stock.

T&C APPLY

Dura Equipment Sales - Gauteng

46 Viewpoint Road, Bartlett, Boksburg, RSA

Tel: +27 11 918 4760
Coenie: +27 83 251 8046
Prinsloo: +27 71 611 7281
Jerry: +27 82 895 5611
Curtis: +27 82 359 9199
Ernest: +27 79 874 5458

Dura Equipment Sales - Cape Town

30 Kiaat Street, Kraaifontein, Western Cape, RSA

T: +27 21 988 6618
Pottie: +27 83 600 0729
Charmaine: +27 82 777 1544
Gerrie: +27 82 950 7040



AFFORDABLE. RELIABLE. TRUSTED.

WWW.DURASALES.CO.ZA



2 X KOMATSU D375A-5
FULLY REFURBISHED



2 X KOMATSU D275A-5
FULLY REFURBISHED



2010 CAT D9R
10451 HOURS



2008 CAT D6T
13975 HOURS



2007 CAT D6R
FULLY REFURBISHED



2006 KOMATSU D65E-12
FULLY REFURBISHED



2 X 2014 CAT 390D
FULLY REBUILT



2019 LOVOL FR330D
34T EXCAVATOR



2005 CAT 320C
14876 HOURS



2012 VOLVO EC700CL
18525 HOURS



2019 LOVOL FR220D
PIPED FOR ATTACHMENTS



2005 KOMATSU PC220-7
14500 HOURS

Visit our website on www.durasales.co.za for the updated stock.

T&C APPLY

Dura Equipment Sales - Gauteng

46 Viewpoint Road, Bartlett, Boksburg, RSA

Tel: +27 11 918 4760

Coenie: +27 83 251 8046

Prinsloo: +27 71 611 7281

Jerry: +27 82 895 5611

Curtis: +27 82 359 9199

Ernest: +27 79 874 5458

Dura Equipment Sales - Cape Town

30 Klaat Street, Kraaifontein, Western Cape, RSA

T: +27 21 988 6618

Pottie: +27 83 600 0729

Charmaine: +27 82 777 1544

Gerrie: +27 82 950 7040



We are stripping earthmoving equipment for spares.

GRADERS



CAT 140 G/H
CAT 16 G
BELL 872 D

ROLLERS



STA VV 900
BW 211 D-3
BW 212 D-2
BW 212 D-2A

DUMPERS



BELL B17 B
BELL B20 B/C/D
BELL B35 D
KOMATSU HM 400-1
CAT 740

EXCAVATORS



SUMITOMO SH 200-1/3
SUMITOMO SH 450-3
CAT 320 LME
CAT 324
CAT 330 B
CAT 375 L
CAT 385-B/C
KOMATSU PC 220-6
KOMATSU PC 200-7
KOMATSU PC 300-7
BELL KATO H 820-11
BELL KATO HD 1023

WHEEL LOADERS



CAT 924 G
CAT 962 G
FURUKAWA FL170/230/330
KOMATSU WA 120-3
KOMATSU WA 250-3/5
KOMATSU WA 280-3
KOMATSU WA 320-3
KOMATSU WA 470-5
KAWASAKI Z85-IV
KAWASAKI Z 90-IV

DOZERS



KOMATSU D 65-8
KOMATSU D 85-18/21
KOMATSU D 275-2/5
KOMATSU D 375-2/3/5

Contact us on:

Danie: +27 (0) 82 356 1755
Jaco: +27 (0) 72 290 4136
Magda: +27 (0) 72 056 3341

email: admin@duraparts.co.za
WWW.DURASALES.CO.ZA

222 Lemmer Rd.
Vulcania
Brakpan

DURA EQUIPMENT PARTS

Jaco +27 72 290 4136
jaco@duraparts.co.za
Adriaan +27 71 234 6234

WEST RAND PLANT HIRE
Tel: 011 845 5160



CAT EXCAVATORS
STRIPPING FOR PARTS



CAT LOADERS
STRIPPING FOR PARTS



FURUKAWA FL230, FL330
STRIPPING FOR PARTS



KAWASAKI Z85, Z90, Z95
STRIPPING FOR PARTS



KOMATSU D65-8, D85-18, -21
& D275A-2 STRIPPING FOR PARTS



KOMATSU PC200-7
STRIPPING FOR SPARES



KOMATSU WA250 & WA380
STRIPPING FOR PARTS



SUMITOMO SH200
STRIPPING FOR PARTS



VOLVO BL61 & BL71
STRIPPING FOR PARTS

www.durasales.co.za



C27 Engine
D10T Application



789B Ventilated
Wheel Station



777D Reconditioned
Radiator



3508 Reconditioned
Crankshafts



New C18 Industrial Eng.
(WJH03460, 2410021)



785 Lubricated
Diff



C13
Engines



994F
Final Drive



785C
Coal bucket



777D Reconditioned
Break Group



992G 3508
Dyno Tested Engine



Komatsu D375-5 Dozer
For Sale



789C Bowl



Track Repair



773F Stripping for parts



773F Bowl



RH120E
Stick



RH120 & RH200
& RH340 Sprockets



EX1200-6 Boom



RH120E Reconditioned
Cylinders



TR100 Complete
Rear Axle



TR100 Complete Set
Hydraulic Cylinders



TR100
Transmission



TR100
Bucket

Available parts:

Reconditioned 3412 Heads
 Reconditioned C7 head
 Reconditioned C15 Heads
 Reconditioned C13 On High Way Head
 Reconditioned C13 Crankshaft
 Reconditioned C7 Crank Shaft
 Reconditioned C27 Cam Shafts
 Reconditioned C7 Block

Available ECM's for various applications:

169-0489	172-9391	156-2122
262-2878	179-9848	130-7481
230-9180	262-2878	9X9971
304-5687	166-6928	166-7731
160-1891	230-7490	179-9850
239-3880	166-7731	
160-4891	117-3351	
172-9387	176-7503	

Various

777D/785B/789B/
 D11R/992G
 Cab instrumentation
 available.



Physical Address
 Plot 26 Naauwpoort
 Benicon Park
 Witbank 1038
 Mpumalanga
 South Africa

Clement van der Merwe
 South Africa, Witbank
 Tel: +27 82 414 1393
 sales@inmime.co.za

<http://www.inmime.com/>



SPEC-CAST WEAR PARTS

Trusted to deliver

Tel: +27 11 396 1717/13
Fax: +27 86 724 8397
Email: aimee@spec-cast.co.za
11 Elgin Street, Pomona,
Kempton Park, Johannesburg
-26°06'14.1"S 28°16'15.9"E
www.spec-cast.co.za

Spec-Cast Wear Parts (PTY) Ltd is a leading manufacturer specializing in the supply of ground engaging tools, undercarriage, agricultural wear parts, general castings and forgings for the construction, mining and agricultural industries. SWP specializes in all metal related products such as Investment Castings, Lost Wax Castings, Lost Foam Castings, Sand Castings, Gravity Die Castings, Die Forging, Extrusion, hot rolled forming and cold rolled forming, Stamping, Welding, Machining, General Fabrication, piping, tubing and flanges.

ROCKTIP G.E.T SYSTEMS



Adaptors



Caterpillar Teeth



Liebherr Teeth



ESCO Teeth & Side Cutters

JCB, New Holland, Komatsu, Massey Ferguson & MST Bolt-on Teeth & Side Cutters



Radium Ripper Tips



Hyundai Teeth

Daewoo Teeth & Side Cutters



Luigong Teeth



Compactor Parts

Ripper Teeth, Shanks & Shank Protectors



Heel Guards

Manufacturer's names, numbers, symbols and descriptions are used for reference purposes only and it is not implied that any part listed above is the product of the manufacturers

ROCKTIP G.E.T SYSTEMS

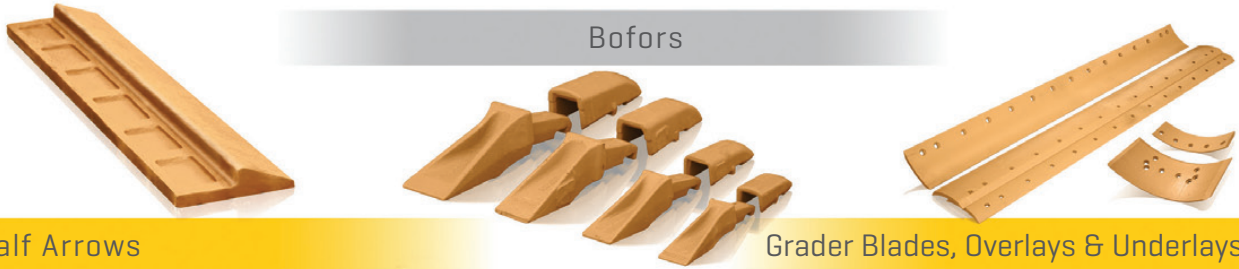
Shrouds



Leading Edge Protectors

Re-pointers

Bofors



Half Arrows

Grader Blades, Overlays & Underlays

Cutting Edges & End Bits



Segments

Wear Buttons

Brass Wear Strips



Chocky Bars

Grader Shoe Circle Guides

Authorized Dealer for ITM and VEMATrack undercarriage parts.
Call our undercarriage experts today!



Tel: +27 11 396 1717/13 / Fax: +27 86 724 8397 / 11 Elgin Street, Pomona, Kempton Park

With branches and distributors located in prime areas throughout South Africa, as well as several African countries, SWP is able to provide the Earthmoving, Mining and Agricultural industries with an efficient, cost effective supply and distribution network.

Manufacturers of G.E.T for:

- CATERPILLAR
- TEREX
- HYUNDAI
- BOFOR
- BOBCAT
- KOMATSU
- JCB
- CASE
- H & L
- MTG
- NEW HOLLAND
- MASSEY FERGUSON
- LIEBHERR
- BUCYRUS
- KUBOTA
- ESCO
- DAEWOO
- LIUGONG



ENGINEERED FOR SUCCESS

ITM is a global leader in the design, manufacture and distribution of undercarriage components and solutions, covering the entire range of modern crawler machine applications in the construction, mining, utility, forestry, road, building and agricultural industries. ITM develops innovative solutions for the most challenging projects, with over 1300 professionals located around the world and 40 experts in our Engineering Centre. The After Sales team and Product Support Specialists assist you with best performing products and lowering maintenance costs. This is how ITM gets clients engineered for success.



Chains



Rollers



Sprockets



Idlers



Shoes



SPEC-CAST WEAR PARTS

Trusted to deliver

Spec-Cast Wear Parts

Authorised dealers of ITM Undercarriage Parts

www.spec-cast.co.za

Tel: +27 11 396 1717/13

11 Elgin Street, Pomona,

Kempton Park, Johannesburg



SPEC-CAST WEAR PARTS

Trusted to deliver



UNDERCARRIAGE

DISTRIBUTED THROUGH A WIDE DEALER NETWORK
THROUGHOUT S.A. AND AFRICAN COUNTRIES

11 ELGIN STREET, POMONA, KEMPTON PARK, JHB.

CALL US TODAY ON 011 396 1713/7

E-mail our Undercarriage Specialist at arthur@spec-cast.co.za



RUBBER TRACKS

CARRIER & TRACK ROLLERS

TRACK LINKS

TRACK SHOES

IDLERS

SPROCKETS & SEGMENT GROUPS

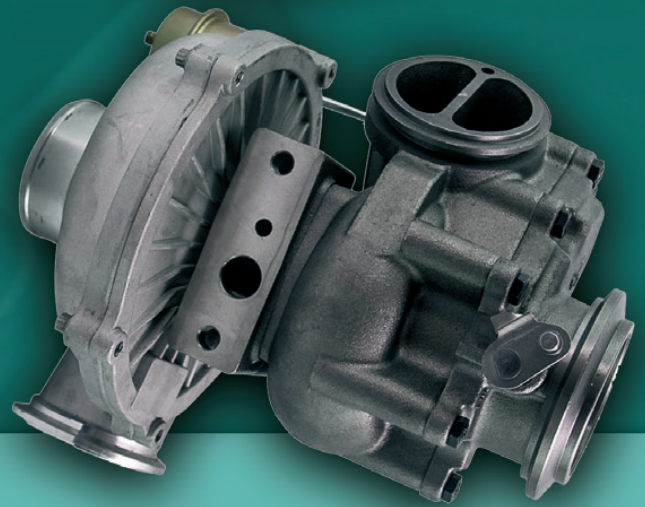
TRACK WORKSHOP TO SUPPORT ALL YOUR UNDERCARRIAGE NEEDS:

- TURNING OF PINS AND BUSHES
- RE-BUILD IDLERS
- RE-STRIP GROUSER SHOES
- REMOVE / FIT TRACK SHOES
- RE-SHELL ROLLERS
- RE-RIM SPROCKETS

**WE TAKE PRIDE IN OUR
QUALITY, CUSTOMER SERVICE
AND WORKMANSHIP**



**Free
"Strip &
Quote"**



- 12 Months warranty on all Turbochargers (New & Remanufactured)
- Passenger Vehicles, Trucks, Tractors, Earthmoving, Industrial Engines
- We collect and deliver

www.turboworks.co.za



Turboworks

"Best quality turbochargers - no compromise"

REMANUFACTURING OF ALL MAKES OF TURBOCHAGERS

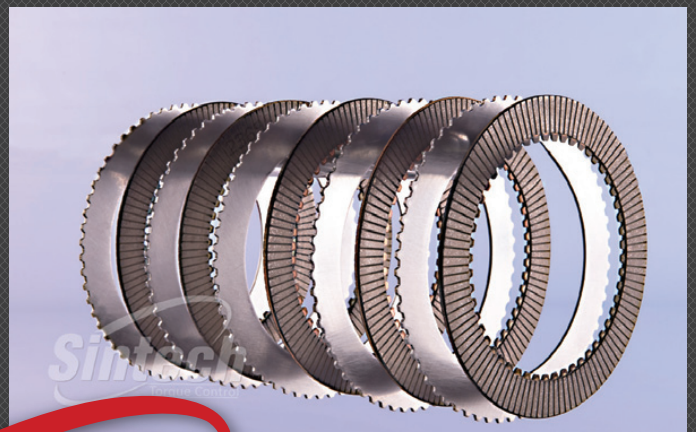
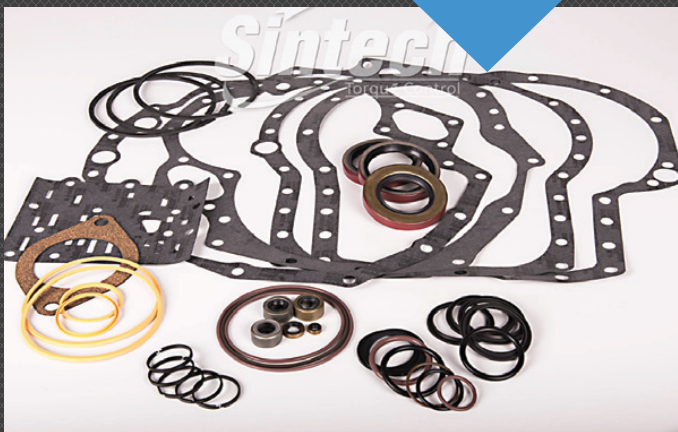
TEL: 012 653 7507

AFTER-HOURS STANDBY NO: 082 824 8037



CLARK DANA AXLE & BRAKE

CLARK DANA TRANSMISSIONS



Sintech

ORIGINAL
EQUIPMENT
SUPPLIER



www.sintech.co.za

+27 (0)11 823 2359



Paramount Tracks

The Real Track Masters

PROUDLY LEVEL 1 BEE COMPANY

We supply a wide range of Undercarriage to fit all types of Drill Rigs and Crawler equipment as well as wear parts for most GET applications.

We specialise in the supply and repair of all Earthmoving Undercarriage , (GET) Ground Engaging Tools, replacement spare parts and Drilling (GET) Drill bits, Couplings and Rods.

We have the infrastructure to supply and service large mining and construction companies. Some references include Anglo American Mogalakwena and Basil Read Mining. We have served both of these clients with distinction



Atlas Copco PitViper 351

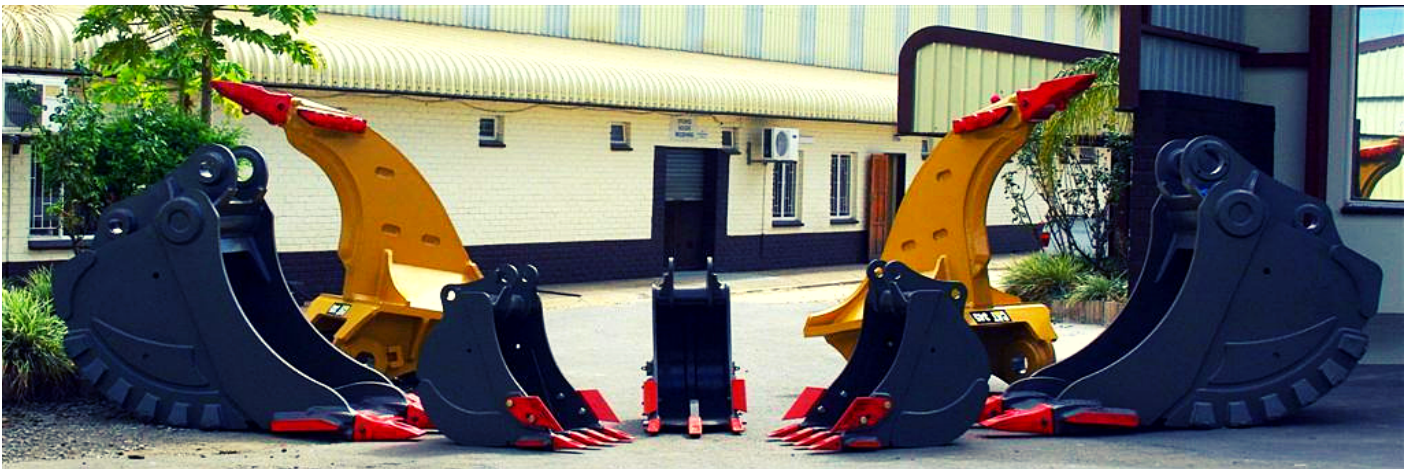


Manufacturer's names, numbers & descriptions are used for reference purposes only & it is not implied that any part listed is the product of the manufacturers

Landline: 010 007 3258 • Mobile: 082 894 5547 | sales@paramountracks.com | im@paramountracks.com



MACHINERY CONTRACTORS



Where other companies stop, Machinery Contractors only starts.



TEL: 012 250 3534 INFO@MACHINERYCONTRACTORS.CO.ZA
WWW.MACHINERYCONTRACTORS.CO.ZA



FIELD SERVICES NOW AVAILABLE



Primeplant (Pty) Ltd

Tel: 011 979 4853 Fax: 011 396 1653
www.primeplant.co.za



We specialize in the repair & maintenance of **CAT** TLB's

Mid Plant Services

NEW & RECONDITIONED HYDRAULIC EARTHMOVING EQUIPMENT, PARTS AND REPAIRS

We get it done!

CONTACT DETAILS

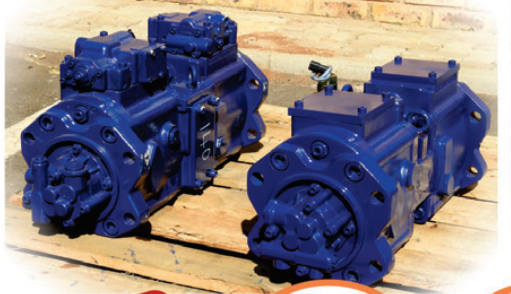
TEL: +27(0)11 967 0055 | TEL:+27 (0)11 967 0060

FAX: +27(0)86 606 4597

SALES@MIDPLANT.COM

273 3RD AVENUE, BREDELL, KEMPTON PARK, 1619

WWW.MIDPLANT.COM



WWW.MIDPLANT.COM

*All manufacturers names, numbers, symbols and pictures are for reference only. It does not imply that any of the parts are the product of these manufacturers.

AFTERMARKET PARTS VS. OEM PARTS - which is better?

If you need to get your show back on the road, but find yourself faced with questions like “Are aftermarket parts reliable, safe, the right quality or even the right fit?” - you need to read no further than this.

We have rounded up the most relevant answers to all your questions about heavy duty after market spare parts, for your easy reference.

Question 01: QUALITY

Is the quality of the aftermarket parts inferior to OEM (original equipment manufacturer) parts?

Short answer: **No**. The aftermarket parts industry is a thriving global industry with factories across Europe, the US and Asia, offering parts that have **the same quality and technical level**, perfectly reflecting the manufacturing processes; with the same high quality control standards as the OEMs. The metallurgical and calibration laboratories of the aftermarket part manufacturers implore the **most advanced and rigorous measuring systems**, fitted out with the **most modern equipment** for each phase of the production. In most cases the **ISO90001** certification is standard practice.



Question 02: AVAILABILITY



Are aftermarket parts more readily available than OEM parts?

Yes indeed - aftermarket parts are more readily available than OEM parts, due to the joys of the open market, the internet, and the aftermarket manufacturers making it their business to **carry stock** of the high turnaround parts. They also circumvent unnecessary bureaucracy - like centralised parts distribution centres - which may cause a delay on the availability of the OEM parts.



KEEPING YOUR PLANT IN MOTION

Question 03: COST

Why are aftermarket parts so much cheaper?

Aftermarket parts do not have to carry the product development costs or the marketing costs incurred by Original Equipment Manufacturers, and the profits generated by the aftermarket manufacturers do not have to subsidise any other part of the organisation. This can bring the cost **down by up to 50% without compromising** on the manufacturing process, technology or **quality of the product**.



Question 04: COMPATIBILITY



Are aftermarket parts **the right fit** for my heavy duty off-highway vehicle?

Hindsight is often 20/20 - and in the case of aftermarket parts manufacturing - it is a highly beneficial to you as the end user. It means re-engineering replacement parts to replace wear parts, or original parts that keep breaking - and as such it offers an **opportunity to improve** on the parts; i.e. using a better suited metal alloys for the manufacturing of the part or making small changes to the design to still fit the original but **improve operation and durability**.

Furthermore at PTT we have been gearing up **since 2001** to be your one stop solution of driveline components and heavy duty spare parts. Our international network and years of experience afford us the opportunity to give our clients a better combination of parts; that will improve durability and operation, **keeping your plant in motion for longer at a markedly lower cost**.

Our state of the art facilities in the East of Gauteng has dedicated workshops for differentials, transferases, axle repair, final drives, transmissions, Hydraulics and brakes.

Give our dedicated sales team a **call today** to see how quickly we can get your plant back in motion.



BRAKES



FINAL DRIVES



AXLES



SPARES PARTS



HYDRAULICS



DIFFERENTIALS



TRANSMISSIONS



TRANSFER CASES

Phone:
011 022 8570

Email:
info@pttech.co.za

Web:
www.pttech.co.za

HYDRAULIC SPARES



TT&C Engineering and Hydraulics stock replacement hydraulic spares for all major earthmoving equipment.

Like Atlas Copco, Sandvik, Komatsu, Bell, Cat, Hitachi, Liebherr, Terex, JCB, Case, Doosan, Sumitomo, Hyundai, Sauer, Rexroth & Kawasaki



Tino: +27 82 822 4676
tino@ttcenghyd.co.za
Karlien: +27 83 946 5754
reps2@ttcenghyd.co.za
Theo: +27 83 630 9980
theo@ttcenghyd.co.za
Christo: +27 72 252 9728
Christo@ttcenghyd.co.za

Tel: +27 11 845 2837
Fax: +27 11 845 2836
www.ttcenghyd.co.za
40 London Road
Apex Benoni, Ext 3
1500

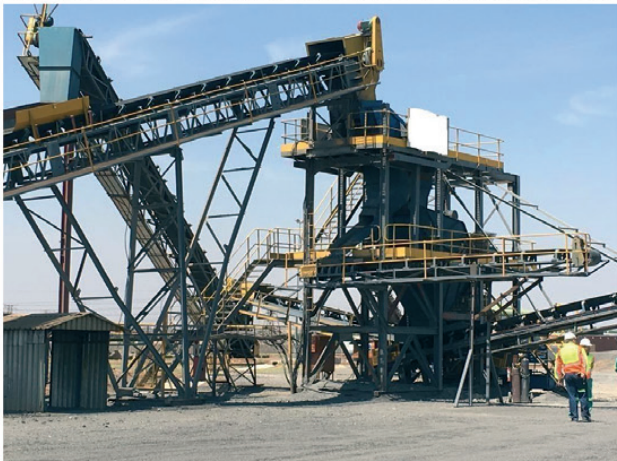
ENGINEERING & HYDRAULICS

We are an Authorised Parker distributor



MARSAY EQUIPMENT

QUARRY | MINING | CONSTRUCTION



Marsay Equipment specialises in the buying, refurbishment and selling of good used construction, mining, stone crushing and transport equipment.

We operate throughout southern Africa, mainly the SADC region. We are based in Johannesburg South Africa and have been in business for 42 years.

TIM MARSAY +27 83 654 4248
MICHAEL MARSAY +27 82 878 2672

tim@marsayequip.co.za
www.marsay.co.za

- 1 x Grizzly feed-+A2:B20ramp
- 1 x Grizzly hopper (10 ton)
- 1 x Grizzly vibrating feeder
- 1 x Feed conv (1,200mm x 15 m long)
- 1 x Feed hopper
- 1 x Drum magnet (1,000 o/d x 1,500 wide)
- 1 x Conv (600mm x 16,000 long)
- 1 x Pilot Crushtec screen (TD 3615 double deck screen) (1,550 x 3,700 long)
- 1 x Fines conv (600mm x 9,000 long)
- 1 x Course conv (600mm x 18,000 long)
- 1 x Feed conv (1,200mm x 15,000 long)
- 1 Overband magnet
- 1 x Feed hopper+ VGF to jaw crusher
- 1 x Hadfields 30 x 20 jaw crusher
- 1 x Conv (1,200mm x 16,000 long)
- 1 x Conv (1,200mm x 37,000 long)
- 1 x Feed chute
- 1 x Vibrating pan feeder
- 1 x Drum magnet (1,000 o/d x 1,500 wide)
- 1 x Two deck screen (1,500 x 4,000 long)
- 1 x 3" Symons cone crusher with lubrication system
- 1 x Cone return conv (900mm x 14,000 long)
- 1 x Conv (900mm x 27,000 long)
- 1 x Conv (900mm x 22,000 long)
- 1 x Double deck screen (1,800 x 4,650 long)
- 1 x conv to VSI (600mm x 20,000 long)
- 1 x Tecroq VSI (T8Rsd) complete with heavy duty stand
- 1 x Conv (600mm x 16,000 long)
- 1 x Conv (700mm x 17,000 long)
- 1 x Conv (600mm x 20,000 long)
- 1 x MCC electrical distribution system / sub incl. all cables and switchgear. Additional stands, chutes and steel structures (Jaw, cone & screens) Spare drum magnet

**We are a recognised
Service provider in
giving used Equipment
Evaluations**

**TIM MARSAY
+27 83 654 4248**

GLOBAL POWER

BETTER DEALS EXCLUSIVE TO



G.E.T

ONE STOP SHOP FOR ALL YOUR EARTHMOVING REPAIR NEEDS

GROUND ENGAGING TOOLS

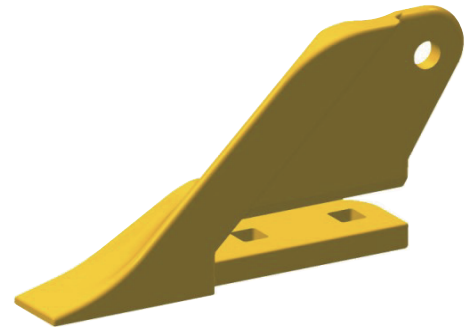
FOR TLB



LEFT SIDE CUTTER



CENTRE UNITOOTH



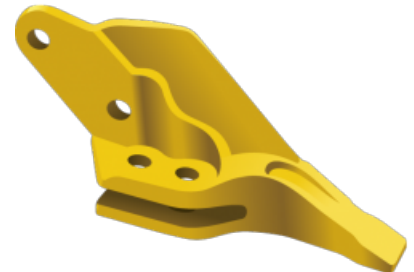
RIGHT SIDE CUTTER



LEFT SIDE CUTTER



CENTRE UNITOOTH

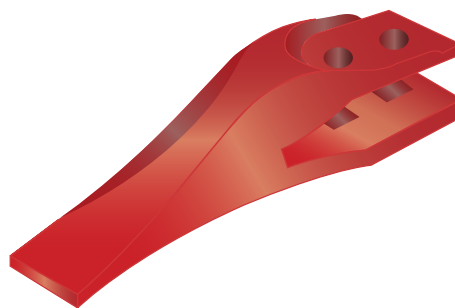


RIGHT SIDE CUTTER

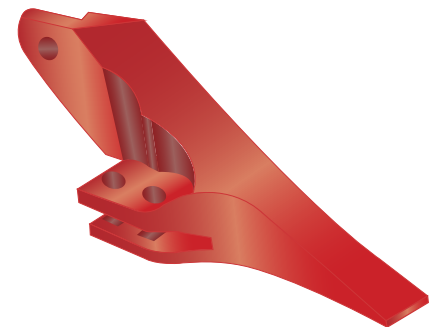
ALSO AVAILABLE IN
UNIK
RANGE



LEFT SIDE CUTTER



CENTRE UNITOOTH



RIGHT SIDE CUTTER

WORLD CLASS LEADER IN THE MANUFACTURE & DISTRIBUTION OF UNDERCARRIAGE, G.E.T & REPAIR PARTS

Johannesburg
Tel: +27 (11) 614 0070
sales@itrafrica.com

Cape Town
Tel: +27 (21) 905 7340
capetown@itrafrica.com

Port Elizabeth
Tel: +27 (41) 451 2222
portelizabeth@itrafrica.com

East London
Tel: +27 (43) 748 3541
eastlondon@itrafrica.com

Namibia
Tel: +264 (83) 331 5160
namibia@itrafrica.com

Kathu
Tel: +27 (53) 723 2245
kathu@itrafrica.com

Pinetown
Tel: +27 (31) 941 1133
pinetown@itrafrica.com

Middelburg
Tel: +27 (13) 590 5614
middelburg@itrafrica.com

Bloemfontein
Tel: +27 (51) 011 5620
bloemfontein@itrafrica.com

Zambia
Tel: +260 (96) 351 3429
zambia@itrafrica.com

MANUFACTURER'S NAMES, NUMBERS & DESCRIPTIONS ARE USED FOR REFERENCE PURPOSES ONLY & IT IS NOT IMPLIED THAT ANY PART LISTED IS THE PRODUCT OF THE MANUFACTURERS.

www.itrafrica.com



UNDERCARRIAGE

ONE STOP SHOP FOR ALL YOUR EARTHMOVING REPAIR NEEDS

TRACK WORKSHOPS

TRACK WORKSHOP SERVICES

- Remove & refit shoes
- Turn pins & bushes
- Re-strip shoes
- Rebuild idlers
- Fit new pins & bushes

TRACK WORKSHOP BRANCHES

📍 Cape Town 📍 Middelburg 📍 Pinetown 📍 Port Elizabeth 📍 East London 📍 Johannesburg 📍 Zambia

UNDERCARRIAGE

ONE STOP SHOP FOR ALL YOUR EARTHMOVING REPAIR NEEDS

MINI EXCAVATOR RUBBER TRACKS & PADS



AVAILABLE FOR:
MINI & COMPACT MACHINES

MANUFACTURER'S NAMES, NUMBERS & DESCRIPTIONS ARE USED FOR REFERENCE PURPOSES ONLY & IT IS NOT IMPLIED THAT ANY PART LISTED IS THE PRODUCT OF THE MANUFACTURERS.

@ITR Africa

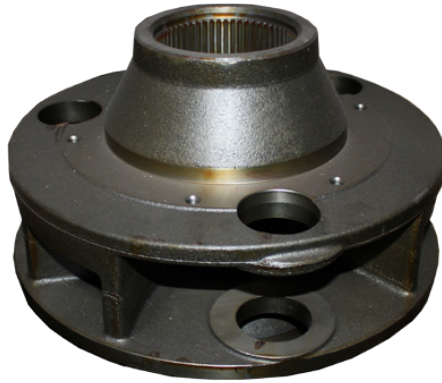
REPAIR PARTS

ONE STOP SHOP FOR ALL YOUR EARTHMOVING REPAIR NEEDS

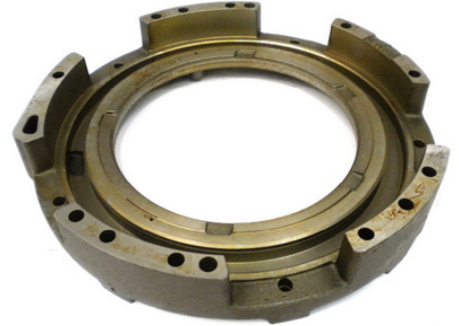
ITR SUPPLIES A WIDE RANGE OF REPAIR PARTS



TORQUE CONVERTER



FINAL DRIVE - CARRIER



HOUSINGS - CLUTCH



PISTON - BALANCE



TURBO COUPLING



SHAFT ASSY



CONE & CUP



SPACER



FUEL/WATER SEPARATORS



CYLINDER



CYLINDER

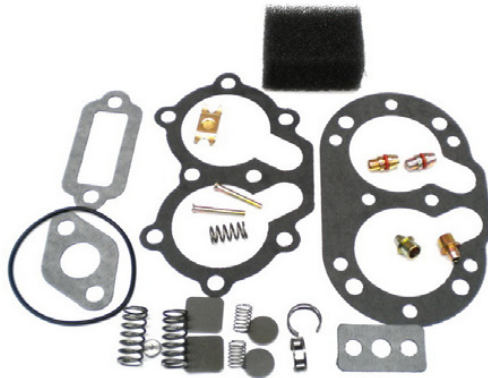
MANUFACTURER'S NAMES, NUMBERS & DESCRIPTIONS ARE USED FOR REFERENCE PURPOSES ONLY & IT IS NOT IMPLIED THAT ANY PART LISTED IS THE PRODUCT OF THE MANUFACTURERS.

REPAIR PARTS

ONE STOP SHOP FOR ALL YOUR EARTHMOVING REPAIR NEEDS
ITR SUPPLIES A WIDE RANGE OF REPAIR PARTS



FILTER - ELEMENT HYD



GASKET & SEAL KITS



PINION CIRCLE



CYLINDER CONSOLE



MASTER LINK



FILTER MAGNET



PIN - MAGNET



ADAPTER INJ



LIFTER ASSY - VALVE

MANUFACTURER'S NAMES, NUMBERS & DESCRIPTIONS ARE USED FOR REFERENCE PURPOSES ONLY & IT IS NOT IMPLIED THAT ANY PART LISTED IS THE PRODUCT OF THE MANUFACTURERS.



GOOD USED EARTHMOVING PARTS AND EQUIPMENT

STM

MINING EQUIPMENT PTY(LTD)

Tel: (011)894-6192 / (011)894-3377

Fax: (011)894 7914

barney@stmmining.co.za

donovan@stmmining.co.za

Office Hrs: Mon-Fri 07h00-17h00



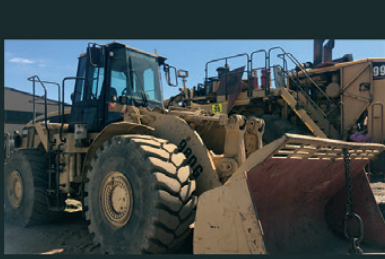
D375-5
STRIPPING FOR PARTS



D475-5
STRIPPING FOR PARTS



325C
STRIPPING FOR PARTS



980G FRONT END LOADER
FOR STRIPPING OR REBUILD



WA500-3 RUNNING BUT
FOR STRIPPING OR REBUILD



ZX850H
GOOD RUNNING MACHINE



CAT D8K
GOOD RUNNER OR STRIPPING FOR PARTS



275-5
NO TRANSMISSION STRIPPING



938F
GOOD RUNNING MACHINE



950H
STRIPPING FOR PARTS



740 ADT DUMPERS X 2 RUNNING
FOR REBUILD OR STRIPPING

GOOD USED EARTHMOVING PARTS AND EQUIPMENT

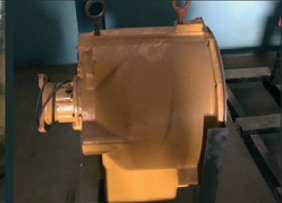


Tel: (011)894-6192 / (011)894-3377
 Fax: (011)894 7914
 barney@stmmining.co.za
 donovan@stmmining.co.za

Office Hrs: Mon-Fri 07h00-17h00



D11R
Final drive



988F-2 Recon
S/exchange T/Converter



VARIOUS TRACKS & CHAINS SECOND HAND



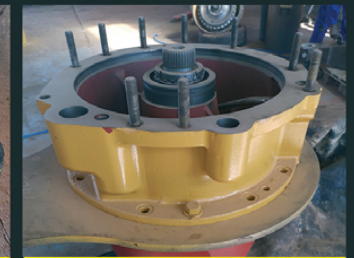
D9T Recon
final drive service exchange



BUCKETS VARIOUS
Second Hand



CAT 140G Transmission
Recon service exchange



CAT 140G Diff
Recon service exchange



Recon service exchange
740 Drop Box



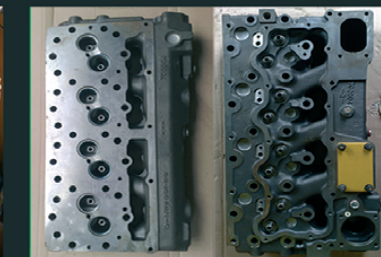
VARIOUS UNDERCARRIAGE ROLLERS & TRACK FRAMES



D10T Recon
Service exchange final drives



740B Final drive
Recon on service exchange



HEADS TESTED & RECONDITIONED
3304 / 3306 / 3204 / 3118 / 3406 / 3412 / C9 / C13



VARIOUS CABS AVAILABLE
Secondhand

STRIPPED ENGINES

- 3304/6
- 3204
- 3126
- 3406
- 3408
- 3412
- 3508
- 3512
- 3516

- C6.4
- C7
- C9
- C11
- C13
- C15
- C18
- C27
- C32

MACHINES

EXCAVATORS

- 225
- 317B
- 318B
- 320B
- 325B
- 330B
- 320D
- 323D
- 330D

LOADERS

- 920
- 930
- 936G
- 938G
- 950A/H
- 966G
- 980F/G
- 988B

www.stmmining.co.za

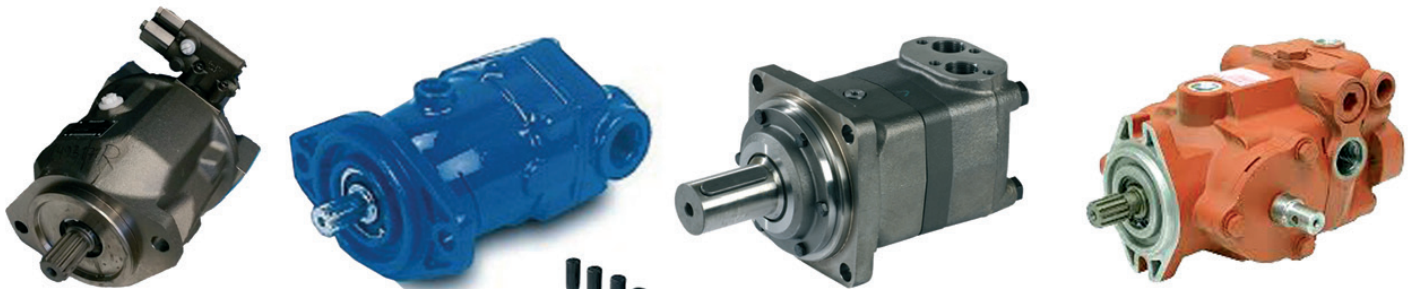


KDH Hydraulics specialize in the repair and supply of **Hydraulic pumps, Motors & Valve banks**

KDH HYDRAULICS

Tel: (011)762-9001/2
 Fax: 0867581303
 Mobile A/H: 071 678 3746
 Email: ricus@kdhhydraulics.co.za

Cnr Quellerie St & Randfontein Rd, Roodepoort, Johannesburg, Gauteng



EXCHANGE UNITS

KAWASAKI

- K3V 280 DT
- K3V 180 DT
- K3V 112 DT
- K3V 280 SH

REXROTH

- A10V60
- A20V60
- A10V74
- A10V71



LIEBHERR – A4VG71

**VARIOUS VOLVO ADT HYDRAULIC PUMPS
 VARIOUS SUNDSTRAND HYDROSTATIC
 PUMPS & MOTORS**



Repairs on all of the following major brands

- Atlas Copco
- Bell Equipment
- Caterpillar
- Liebherr
- Doosan
- Hitachi
- Komatsu
- Sumitomo
- Kawasaki
- Sandvik
- Bobcat
- Powerscreen
- Terex
- Finlay
- Aard Mining Equipment
- GHH
- Case
- ASA-Lift
- John-Deere
- Volvo

We also supply Gear pumps and motors according to application specifications and requirements.

www.kdhhydraulics.co.za



ASV Holdings, Inc. Signs Definitive Merger Agreement With Yanmar Holdings

ASV Holdings, Inc. (NASDAQ: ASV), a leading provider of rubber-tracked compact track loaders (CTLs) and wheeled skid steer loaders (SSLs) in the compact construction equipment market, today announced that it has entered into a definitive merger agreement with an affiliate of Yanmar Holdings (Yanmar). Under the terms of the agreement, which been approved by both the ASV and Yanmar Boards of Directors, ASV stockholders will receive \$7.05 in cash for each outstanding share of ASV common stock, for a total value of \$70.7 million. The ASV Board of Directors unanimously approved the agreement with Yanmar and recommends that ASV stockholders vote in favor of the transaction.

The combination of ASV's compact track loaders and skid steer loaders with the compact equipment portfolio of Osaka, Japan-based Yanmar, creates a comprehensive and global provider of compact equipment with virtually no overlap in distribution networks. The ASV employee base, its manufacturing and distribution facility, international distribution network and supply chain creates a strong platform for North American expansion and will be a key part of Yanmar's long-term international growth plans.

The transaction is subject to approval by ASV stockholders and other customary closing conditions and is expected to close in the third quarter of 2019. In conjunction with the Merger Agreement, a subsidiary of Terex Corporation (NYSE: TEX), which owns 34% of the outstanding shares of ASV, has entered into a stockholder voting agreement in support of the Merger.

Andrew Rooke, Chairman and C.E.O. of ASV commented, "We are excited to announce this value-maximizing transaction with Yanmar. Yanmar is a strong strategic buyer for ASV. Yanmar shares our vision to provide the highest-quality products, values the long legacy of ASV and is committed to supporting its employees and distribution partners. In addition to maximizing value for ASV stockholders, the merger will create a strong platform for growth and expansion, bringing together two leading brands with similar cultures and creating value. The ASV product is complimentary to the Yanmar portfolio of compact equipment creating a comprehensive equipment solution for current and future customers. Yanmar Compact Equipment will gain its only manufacturing facility in North America, here in Grand Rapids, Minnesota, and will contribute its considerable global presence and financial strength, making way for continued product development and innovation within the track loader and compact construction equipment category for years to come."



Mr. Giuliano Parodi, Executive Officer of Yanmar Holdings, stated: "We believe that the ASV acquisition will significantly bolster Yanmar's Compact Equipment offerings in the loader segment, a product range vital for success in the all-important North American market." Mr. Parodi added, "With its highly-skilled workforce and quality CTL/SSL lineup, ASV is a great fit for both Yanmar's focus on quality, and our growth and expansion plans in the North American and global markets as it will create a comprehensive and global provider of Compact Equipment with virtually no overlap in distribution networks."

EMS

Earthmoving Machine Sales



Jason Ward
+27 83 412 1077
jason@sa-ems.co.za

Mark
+27 82 907 9081
Tel: +27 31 777 1025

CATERPILLAR



1 X CATERPILLAR D6G
12000 HOURS - 2009 MODEL

JCB



1 X JCB 3DX
2013 MODEL - 7200 HOURS

KOMATSU



1 X KOMASTU PC220
13000 HOURS - 2008 MODEL - READY TO WORK

HYUNDAI



1 X HYUNDAI 220
2013 MODEL - 9500 HOURS

GENERATORS



2 X 40KVA GENSETS
WITH 3 PHASE POWER

CATERPILLAR



1 X CATERPILLAR 320DL
2009 MODEL - 11000 HOURS - GOOD RUNNER

CATERPILLAR



1 X CATERPILLAR 320D2
2014 MODEL - 9000 HOURS - VERY GOOD CONDITION

CATERPILLAR



1 X CATERPILLAR 416F
2013 MODEL - 8200 HOURS

CATERPILLAR



2 X CATERPILLAR CS533E
2009 MODELS / - + 7000 HOURS

CATERPILLAR



1 X CATERPILLAR 140G
1988 MODEL - NEEDS ATTENTION

DOOSAN



1 X DOOSAN DL420A
2015 MODEL - 6500 HOURS - READY TO WORK

HYUNDAI



1 X HYUNDAI 300LS EXCAVATOR
2013 MODEL - 11000 HOURS - READY TO WORK

DYNAPAK



1 X DYNAPAK CA 250
2005 MODEL - 6500 HOURS - PADS STILL VERY GOOD

DOOSAN



1 X DOOSAN 300LCA
2012 MODEL - 11000 HOURS - CURRENTLY WORKING

TRIANGLE *Tires for Life*



TL559s



TL538s



TB589s



TB516



JOHANNESBURG · PRETORIA · RANDFONTEIN · MIDDELBURG · SECUNDA · BARBERTON · BRITS · RUSTENBURG
STEELPOORT · BLOEMFONTEIN · WELKOM · RICHARDS BAY · DURBAN · CAPE TOWN · DANIELSKUIL · HOTAZEL

JACQUES ROUX | CELL (+27) 83 777 9497 | OFFICE (+27) 12 548 9327
JACQUES_ROUX@KALTIRE.COM | WWW.TRIANGLE.COM.CN



Mining Tire Group

WWW.KALTIREMINING.COM/EN

ALL TURBO CHARGER ENQUIRIES WELCOME



Contact
Tel: 013 246 1003 / 2285
Wayne 083 310 9235 | wayne@vrdiesel.net

HEUI INJECTORS



**REPAIRS
NOW
AVAILABLE**

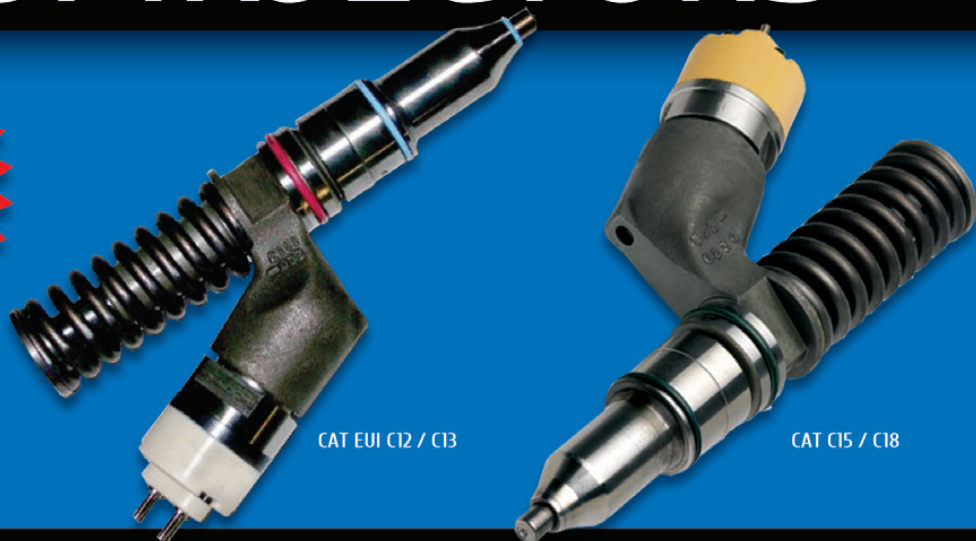
We service, repair and recondition the following leading turbo charger and diesel fuel injection brands:



**Names and terms for reference purposes only*

EUI INJECTORS

**SERVICE
EXCHANGE
UNITS
AVAILABLE**



If you are not using VR Diesel & Turbo for your diesel fuel injection needs, chances are you are paying too much.

Bobcat, SANY make big inroads in Northern Cape mining industry

From Anglo American's Kumba Iron Ore Mine to the AMG Group's manganese operations, Goscor Earth Moving (GEM) Kathu, a multi-franchise branch of Goscor Industrial & Construction Equipment, is making inroads in the important Northern Cape mining region with both the SANY and Bobcat brands.

GEM Kathu Acting Branch Manager **Rudi Burger** reveals that the branch recently supplied 15 Bobcat skidsteer loaders to three different contractors awarded a three-year contract at Kumba. It is currently negotiating with a fourth contractor.

"The Bobcat skidsteers are mainly being used for cleaning operations on the minerals-processing side, clearing debris and over-spillage from the conveyor belts," Burger explains. The compact design and excellent manoeuvrability of the machines in confined spaces, in particular, makes them ideal for this application.

Following on from supplying the AMG Group with three SANY SY500H excavators in September, GEM Kathu continues to offer service and support to this important client, as well as supplying Ground Engaging Tool (GET) accessories in the form of bucket tips.

"We have essentially penetrated the mining industry in the Northern Cape with these two major clients, flying the flag high for both SANY and Bobcat. The benefit of a multi-franchise branch such as we have at Kathu, and also Nelspruit, is that we are able to offer our clients complete solutions for all their materials-handling and mining needs."

With an existing SANY fleet of ten excavators, ten load-haul dump trucks, and six front-end loaders, Burger reveals that the AMG Group is also looking to acquire a SANY SY750 excavator.

The SANY SY750 is ideal to load blasted material onto articulated dump trucks (ADTs), as well as for stripping top soil and free digging. For example, the 4.2 m³ bucket means that a 40 t ADT can be loaded in less than seven passes, making it ideal for the AMG Group's extensive high-volume manganese mining operations.

CEO **Scott Yuan** comments that, to date, what sold the AMG Group on both SANY and GEM has been the superlative service support and technical back-up. While the SANY SY500 is a highly rugged machine, the extremely dusty conditions these excavators were operating under required some modifications on the filters to prevent them clogging up prematurely.

"We had to install a top-spin pre-filter on the air filtration system in order to alleviate the dust issue. This was carried out successfully and efficiently by our trained technicians, and the excavators have been operating without a hitch ever since," Burger reveals. AMG Group Site Foreman **Dewalt Pitzer** adds: "GEM Kathu has provided us with great service, and the machines have performed well. They are powerful, and get the job done perfectly. We have a great service history with SANY, and have had no issues with the machines to date."

Yuan concludes: "We really have to commend both GEM and its Kathu management and technical personnel for their proactive, hands-on approach.

Any downtime incurred is a major cost factor in mining operations of our scale, and the team has gone above and beyond the call of duty to ensure that our fleet is operational at all times."

Goscor Group Contact

Debby Marx

Group Marketing Communications Manager

Phone: (011) 230-2600 / Fax: (011) 393 5512

Cell: 084 200 2278 / Email: dmarx@goscor.co.za

Web: www.goscor.co.za



Two leading KwaZulu-Natal materials handling specialist companies – **BLT WORLD** and **Desmond Equipment** - mark 10 years of their association this year.



BLT WORLD and Desmond Equipment celebrate 10 years of their association this year

Two leading KwaZulu-Natal materials handling specialist companies – BLT WORLD and Desmond Equipment - mark 10 years of their association this year.

“BLT WORLD, which was appointed by Desmond Equipment to supply and support the Dezzi range of bulk handling equipment in 2009, is proud to celebrate this important milestone,” says Ken Mouritzen, managing director, BLT WORLD. “The locally-designed and manufactured range of Dezzi machines comprises front-end loaders, articulated dump trucks, graders and tractor-trailer combinations, including hauler tractors. “These units can be seen hard at work throughout the country in all sectors, particularly in shipping, sugar, timber and agricultural sectors.

“What’s important for users is Dezzi machines have robust features to cope efficiently in difficult operating conditions. This range, which offers high productivity, extended service life and low maintenance requirements, can be customised to suit exact customer requirements.” Popular units in the Dezzi range are 1200 LP (low-profile) loaders, designed for efficient loading of various materials, including coal, cereals and mill scale. Dezzi shunting haulers and tractors are used at harbours and terminals for towing trailers that haul containers, cargo and any specialised commodity handled at the port. These tractors are also used at the harbour to tow and shunt rail cars.



Dezzi equipment used extensively in the local sugar sector includes Mega Mover cane loaders, bundle cane loaders and graders. These machines ensure easy control, efficient cane handling and optimum safety.

Included in the range of Dezzi trailers are quick-turn and tip-dump trailers, designed for various materials handling applications in mining, construction and general engineering.

BLT WORLD, in close association with Desmond Equipment, supports Dezzi equipment with a technical advisory and service facility throughout the country.

Pilot Modular makes sense

Pilot Crushtec - creating solutions for an ever-changing industry

It goes without saying that, in all industries, across all sectors, wasteful expenditure is a sure fire way to hasten a company's demise.

What comes to mind is the concept of 'Just in Time' manufacturing, made popular in the 70's by the Toyota corporation which stated a company should be geared toward making just what is needed, when it is needed, and only in the amount needed.

The mining and quarry sector is no different.

By over-capitalising on Capex, one runs the risk of tying up much needed capital that could be better utilised in other areas. This is where Pilot Crushtec's modular solutions for the mining, quarrying, construction and recycling industries comes to the fore as the logical choice for companies across the spectrum.

To define the concept of the modular plant, Mark Reeves, sales engineer at Pilot Crushtec, says that the idea is modular by design and implementation.

"From a design perspective, you can select the components you need, for your specific application. These units are then interlinked with conveyors and a solution is tailored to your specific needs and site specifications. Once the design is defined, all the modules and individual components are sent to site, lifted into place and bolted together – not unlike a Mechano set. Additionally, should your requirements change at any point within the design process, you are able to tweak the requirements, so you have exactly the right layout, equipment, and capacity to get the job done. You get to choose what you need, when you need it, and can add modules as and when required."

The concept would, at first, seem to be aimed at solutions for the larger companies within the market, but as we have seen over the last few years, smaller entrepreneurs and medium sized companies are on the rise. The modular solution in this case would make perfect sense for those enterprises starting off small, with an eye to growing their business and creating sustainability within a challenging global economy.

"These modular plants are extremely scalable and, as such, can cater to a wide variety of companies, irrespective of size or application. We can design and implement a solution that will process anything from 10 tons an hour to 500 tons an hour – and should your requirements change over time, additional units can be slotted in to increase production."

The concept of the modular plant, the brainchild of engineers at Pilot Crushtec, is a seamless integration of the company's industry know-how, innovation and manufacturing capabilities with global machine manufacturer, Metso. As with all the Metso products, the components come with the industry leading five-year/10 000-hour extended Equipment Protection Services (EPS) warranty. "We realised there was a gap in the market for a modular solution and took it upon ourselves to study the general assembly drawings from Metso and devised a way to make the concept work," says Reeves.

The mining, crushing and screening industry is, by its nature, incredibly dynamic. Unforeseen circumstances occur all the time and if you are not prepared for these events the financial implications could be dire. As with all things in the 21st century, agility and adaptability are key to survival, and being able to plug and play components, as the need arises, just makes sense. "There is no consistency in what comes out of the ground. That's a given," says Reeves. "Case and point is a quarry in Port Elizabeth that was working on citric sandstone, a fairly competent substrate. After blasting, there was a reasonable, consistent top-size and dust which the crushers could easily handle. Unfortunately, they hit a fracture running straight through the centre of the quarry. The material was pebbles and smaller so did not need crushing, only screening. The solution to this was to continue mining and crushing the larger substrate on the original stage and then to add a second module to merely screen the smaller material. Essentially, our modular solutions cater to this particular situation perfectly - they can adapt to the environment."

The smart money, going forward, will almost certainly be on the modular concept. In a world where almost everything is a bespoke, client-centric offerings, customers expect more convenient, predictable and reliable choices and Pilot Crushtec delivers. Having the ability to custom design a plant with off the shelf components and then being able to scale it according to your needs going forward, without the hassle of major earthworks, retooling, and construction just makes sense in an ever-evolving industry.



Components

P & R Earthmoving
VR Diesel & Turbo

Engineering

Earth Mach
Earthmoving Specialist
East Coast Gears / SPM Engineering
Gears For Africa
KDH Hydraulics
Stenhard Ing
Turboworks
VR Diesel & Turbo

Ground Engaging Tools

Blumaq
Centrax
ESP
ITR Africa
Rocktech
Spec-Cast Wear Parts
TGS
Wearpact Replacement Parts

Hire / Rent

Amalgamated Plant
B&B Plant - UNIC Spider Cranes
Garage Equipment Services

Hydraulics

Fluid Blast Hydraulics
KDH Hydraulics
TT&C Engineering & Hydraulics

New Machines

BB Plant and Unic Mini Cranes
Bell Equipment
Earthmoving Machine Sales
Earth Mach
Force 8
Kemach JCB
Liugong
Lovol Construction Equipment
Marsay Equipment

New Parts

Bell Equipment
Blumaq
CTC Plant Company
Equipment Parts & Engines
ESP
Filter Centre
Force 8
ITR Africa
Kemach JCB
LNE Agri-Earth
Mid Plant Services
New Beginnings Designs
One Stop Procurement
Power Transmission Technology
PrimePlant
Queensburgh Plant Sales
Rhino Excavator Hammers
Rocktech
Ruspet Exhausts

New Parts

TGS

Transmissions

Vortex Transmissions

Turbos

VR Turbo & Diesel
Turboworks

Tyres

Associated Equipment
Kaltire

Undercarriage

Blumaq
Centrax
ESP
ITR Africa
Paramount Tracks

Upholstery

The Seat Connection

Used Machines

All Africa Supplies
Amalgamated Plant
Associated Equipment
BB Plant and Unic Mini Cranes
BLC Plant Company
CTC Plant Company
Dozer
Dura Equipment Sales
Earthmoving Machine Sales
EPT
HL DU PLOOY Plant
MAE Equipment
Marsay Equipment
McKenzie Plant Sales
Plant Finder
Powertrans
Queensburgh Plant Sales
STM Mining Equipment
Transand

Used Parts

All Africa Supplies
Bell Equipment
BLC Plant Company
Bula-Matari Mining Components
Central Africa Machine Sales
Dozer
Dura Parts
Earthmoving Machine Sales
EPT
Equipment Parts & Engines
ITR Africa
Mid Plant Services
New Beginnings Designs
P & R Earthmoving
Queensburgh Plant Sales
STM Mining
Turboworks
VR Diesel & Turbo



CATERPILLAR

793F

CAT 793F

earthbroker

your sourcing solution for new & used equipment & machinery

- Why deal with different people each month when you can deal with the same friendly people you always deal with.
- We are proudly South African. Support your country who understand your needs.
- WE are ABC Accredited - this means we do print the amount we say we print. No pie in the sky number. We send direct to the correct people in the industry.
- We have our PAMMS certificate...This means our database has been checked and validated.
- Your advert is advertised FREE on our website and on our online digital magazine.
- We design FREE of charge and all changes are done FREE of charge.
- NO contracts to be signed.
(Just a full calender months notice is required for cancellation)



Audit Bureau of Circulations
of South Africa



**We have an
online magazine
in which your
advert is
advertised free
of charge**

We offer excellent service and design.

Should you have people/companies you would like added to our database , we will happily do that should they not already be on our database.

Please call us for a prompt response and great service!

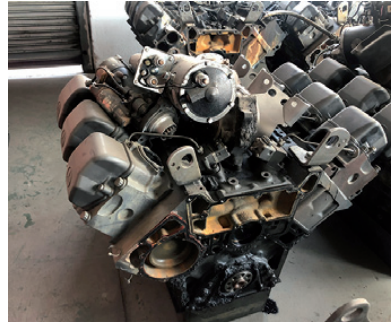
For further info on how to get your company listed in the Earthbroker please call...**Janine - 083 456 4027**



New Mahindra TLB 4x4

12 month warranty
R 675 000 plus vat.
 Best value & reliable 2

Contact
 Phil - 082 551 1620
 +27 82 551 1620



Used Bell / Mercedes 501 V6

Long block
R 25 000.00 plus vat
 50 to choose from

Contact
 Phil - 082 551 1620
 +27 82 551 1620



Mercedes 10 & 18cu Tippers

20 to choose from
R750 000 plus vat.

Contact
 Phil - 082 551 1620
 +27 82 551 1620



3 x Cat 938K FEL's 2014
 2 x Cat 950H FEL's 2013
 1 x SDLG 948L FEL 2012 Model
 1 x Cat 966H FEL - 2014
 1 x Cat 980H FEL - 2014

Contact Jaap
082 892 1327

Email:
associated1@xnet.co.za



PILOT CRUSHTEC TM0605 TRAILER MOUNT IMPACT CRUSHER

S/NO: TM0605027
 ENGINE: CAT C2.2
 YEAR: 2008
 SMR: 75 HOURS

SHAWN MICHELL 082 568 4033
 shawn@plantfinder.co.za
 www.plantfinder.co.za
 TEL: 041-379 1717 / FAX: 041-379 4753



1 X USED JCB 3DX (4X4) TLB

SERIAL NO: 1606818
 SMR: 6340 HOURS
 YEAR: 2015

SHAWN MICHELL 082 568 4033
 shawn@plantfinder.co.za
 www.plantfinder.co.za
 TEL: 041-379 1717 / FAX: 041-379 4753



1 x Hamm 3520 Smooth Drum Roller
 20 Ton 2012 Model
 1 X Cat CS533E Vibrating Roller

Contact Jaap
082 892 1327

Email:
associated1@xnet.co.za



1 x Caterpillar 323D Excavator 2007
 1 x Komatsu PC 220-8 Excavator 2011
 4 x Caterpillar 320D Excavator 2014/2010
 2 x Komatsu PC200-8 Excavator's
 1 x Cat 329D Excavator - 2014

Contact Jaap
082 892 1327

Email:
associated1@xnet.co.za



CAT 390DL-ME

2014 model
 low hours
 Call for Price

THOMAS MITTAG
 Cell: +27 72 545 6223
info@mae-equipment.com



KOMATSU D275A-5

2008 model
 low hours
ZAR 1.650.000

THOMAS MITTAG
 Cell: +27 72 545 6223
info@mae-equipment.com

For further info on how to get your company listed in the Earthbroker please call...**Janine - 083 456 4027**

COMPANY	BRANCH	DESIGNATION	CONTACT	TEL NO	FAX NO	A/H-CELL	EMAIL
Atlas Service Centre	JHB		Fourie Von Tonder			083 301 1632	
A to Z Diesel Engineering	Johannesburg	Owner	Lee Bray	(011)822 6761	(011)828 3117	082 909 0105	atozdieseleng@lantic.net
A.T.E.C.cc	JHB	Manager	Mr. Hayward	(011)422 2274	(011)422 2255	082 496 1781	atec@intekom.co.za
Action Equipment Co	JHB	Sales	Yolanda	(011)452 1298	(011)452 1299		yolanda@action.co.za
AGS Technologies	Cape Town	Owner	James			079 077 9528	james_agstech@vodamail.co.za
Africaplant.com	Newcastle	Sales	Mark	(034)318 3032	0866 222 943	082 301 3961	admin@africaplant.com
Afritool - Rent	JHB		Karen Abrams	(011)974 2819		082 523 9777	karen.abrams@fluor.com
Aggretech	Franshoek	Sales	Beate	(021)876 4455	(021)876 4454	072 267 9755	b.lechner@aggretech.co.za
Anric Enterprises	JHB		Ric de Nysschen	(011)740 0975			anric@cybertrade.co.za
Aquajet Profiles (Pty)Ltd	JHB	Director & Sales	Preeshan Naidoo	(011)908 5550	(011)908 5551	073 470 4958	info@aquajetprofiles.co.za
Arch Equipment	JHB		Greg Archibald			082 803 4227	archhire@mweb.co.za
Associated Equipment Co	Johannesburg	Sales	Jaap	(011)801 4911/2	(011)801 4914	082 892 1327	associated1@xnet.co.za
AVANT SA	CPT		Wally	(021)945 1019	(021)949 5361	076 688 3399	info@avantsa.co.za
Azrel Equipment	Johannesburg	Sales	Mike Imrie	(010)590 8048	086 617 8148	083 230 3118	mike@azrelequipment.com
Azrel Equipment	Johannesburg	Sales	Tanya Imrie	(010)590 8048	086 617 8148	083 231 5446	tanya@azrelequipment.com
B&B Plant / Unicrane	Empangeni		Bob Fogg	(035)787 0679	(035)787 1104	082 570 5781	sales@bbplant.co.za
Barloworld Equipment Co	Durban	Parts	Brett Woodhouse	(031)569 8520	(031)569 8582	082 903 5929	bwoodhouse@barloworld-equipment.com
Barloworld Equipment Co	Durban	Parts	R. Haripersadh	(031)569 8520	(031)569 8582	082 903 5929	rharipersadh@barloworld-equipment.com
Barloworld Equipment Co	Newcastle	Parts	Milan Pather	(034)315 2847	(034)315 2868	073 971 2046	mpather@barloworld-equipment.com
Barloworld Equipment Co	Newcastle	Sales	Brendan Moore	(034)315 2847	(034)315 2868	073 781 8865	
Barloworld Equipment Co	Richardsbay	CRS	Frans du Preez	(035)797 6300	(035)797 4099	082 904 9619	
Barloworld Equipment Co		CRS	Cameron de Reland			073 360 0284	CdeReland@barloworld-equipment.com
Barloworld Equipment Co		CRS	Neil Kruger			071 886 1445	NKruger3@barloworld-equipment.com
Barloworld Equipment Co		CRS	Sean Mackintosh			082 889 8800	SMackintosh@barloworld-equipment.com
Barloworld Equipment Co	Durban South	Sales		(031)569 8500	086 606 8624	083 309 0624	emuller@barloworld-equipment.com
Barloworld Equipment Co	Bloemfontein	Sales	Quentin Coetzee	(051)4091200	086 606 8624	078 460 2622	qcoetzee@barloworld-equipment.com
Bell Equipment	Richards Bay	Parts	Jackie Smith	(035)907 9190	(035)797 4334	082 550 8791	bellparts@bell.co.za
Bell Equipment			Andrew Pretorius	(011)966 4934		071 607 3978	partssales@bell.co.za
Bell Equipment	JHB	Used Parts	Fazel Patel	(011)928 9804	(011)928 9882		usedparts@bell.co.za
Bell Equipment	JHB	Machine Sales	Susan Myburgh	(011)928 9700	(011)928 9730		sales@bell.co.za
Belltread Tyres	JHB		Peter	(011)392 3521	(011)392 3819	083 677 0377	rose@beltreadtyres.co.za
Belltread Tyres	JHB		Craig Walters	(011)392 3521	(011)392 3819	074 830 8775	
Bert's Bricks (Pty)Ltd	Potchefstroom	Sales	Elaine / Tanya	(018)292 1615	(018)292 1993		sales@bertsbricks.co.za
BKB Van Wyk	JHB			(017)81-97423	(017)81-97090		vanwykinfo@telkomsa.net
Blumaq	JHB		John Beukes	(011)966 5092	086 670 4157		john.beukes@blumaq.com
BLC Plant Company	Johannesburg	Machine Sales	Luigi Stravino	(011)555 2000	(011)555 2255	082 552 7017	luigistravino@blcplant.com
BLC Plant Company	Johannesburg	Machine Sales	Paolo Stravino	(011)555 2000	(011)555 2255	082 852 3721	paolostravino@blcplant.com
BLC Plant Company	Johannesburg	Machine Sales	Andrew McCall	(011)555 2000	(011)555 2255	082 256 0334	andrewmccall@blcplant.com
BLC Parts	Johannesburg	Parts Sales	Robbie Stocks	(011)555 2000	(011)555 2266	082 492 9263	
BLC Parts	Johannesburg	Parts Sales	Mike du Plessis	(011)555 2000	(011)555 2266	082 508 2908	mikeduplessis@blcplant.com
BLC Parts	Johannesburg	Parts Sales	Michael Marriott	(011)555 2000	(011)555 2266	082 905 8983	michaelmarriott@blcplant.com
Bom-mach / Stampede	JHB	Sales	Leonie Jenkinson	(011)394 5704	086 653 6866	083 680 0459	info@stampede.co.za
Bruforce	JHB		Craig	(011)393 1298	(011)393 1289	083 627 2533	bruforce@mweb.co.za
Bula Matari	JHB	Sales	Pete Ellison	(011)310 1142		063 698 7582	sales@bula-matari.com
Bula Matari	JHB	Sales	Mike Ward	(011)310 1142		064 903 1356	sales@bula-matari.com
Bula Matari	JHB	Sales	Konrad Roos	(011)310 1142		082 561 9587	sales@bula-matari.com
Bula Matari	JHB	Sales	Kelvin Preston	(011)310 1142		072 722 4004	sales@bula-matari.com
Burgers Equipment & Spares SA	JHB	Parts		(011)979 3636	0811 396 3819		manager.za@burgersafrica.com
Caldas Engineering & Manufacturing	JHB	Marketing	Mia Caldas	(011)453 7797	(011)453 8161		info@caldas.co.za
Capital Equipment Parts	JHB	Sales	Sam Glover	(011)568 4214			
C-Quip	JHB	Sales		0861 777 994			sales@c-quip.co.za
Central Africa Machine Sales	Witbank	Sales	Marcus Van der Walt			082 414 1393	marcus@inmime.com
Centrax	Johannesburg	Sales	Brendan	(011)974 4307	(011)392 3091	083 654 7885	brendan@centraxsa.co.za
Centrax	DBN	Sales	Steve	086 123 6872	086 529 4683	083 613 0664	centraxkzn@iburst.co.za
CML Operations	JHB		Peter	(011)660 1682		082 859 9938	peter@melgers.co.za
Consolidated Auctioneers	JHB		Jaco Welthagen	(011)872 1890		076 791 0916	jaco@cagg.co.za
Construction Equipment for Sale	JHB		Mark			082 564 0013	
Construction Equipment for Sale	JHB		Max			082 564 0161	



“The man who stops advertising to save money is like the man who stops the clock to save time.”
- Thomas Jefferson -

In difficult economic times one should put more effort into promoting your business, your services and your products.

Cutting back on your advertising will ensure that your business loses ground to competitors who know and understand this.

Quick Reference

COMPANY	BRANCH	DESIGNATION	CONTACT	TEL NO	FAX NO	A/H-CELL	EMAIL
Construction Tyres	JHB			(011)421 1880	(011)421 2258		sales@constructiontyres.co.za
Cranes Direct	Boksburg	Parts Sales	John Thage	(011)894 8056	(011)894 8057	083 254 4068	john@cranesdirect.co.za
Cranes Direct	Boksburg	Crane Sales	Mark Le Roy	(011)894 8056	(011)894 8057	083 233 2140	mark@cranesdirect.co.za
CTC Plant Company	Cape Town	Sales	Colin McOwen	(021)386 4190	086 505 4290	082 440 4806	colin@ctcplant.co.za
CTC Plant Company	Cape Town	Sales	Evert Jooste	(021)386 4190	086 505 4234	082 825 8865	evert@ctcplant.co.za
CTC Plant Company	Cape Town	Sales	Peter Groenewald	(021)386 4190	086 505 2969	072 368 5581	peterg@ctcplant.co.za
CTC Plant Company	Cape Town	Sales	Mark Walker	(021)386 4190	086 240 2988	082 441 2446	markw@ctcplant.co.za
CTC Plant Company	Cape Town	Sales	Robert Freeman	(021)386 4190	086 505 4194	079 500 3940	robert@ctcplant.co.za
CTC Plant Company	Cape Town	Parts	Mark Swanepoel	(021)386 4190	086 505 4308	082 825 6966	marks@ctcplant.co.za
CTC Plant Company	Cape Town	Parts	Nico Vermeulen	(021)386 4190	(021)386 9303	084 525 6966	nicov@ctcplant.co.za
CTC Plant Company	Cape Town	Service	Olla van den Heever	(021)386 4190	(021)386 5347	082 467 1894	olla@ctcplant.co.za
CTC Plant Company	Cape Town	Transport	Ian Geysler	(021)386 4190	(021)386 5674	082 440 5861	ian@ctcplant.co.za
CTC Plant Company	Cape Town	Transport	Shaun Haman	(021)386 4190	(021)386 5674	082 495 2640	shaun@ctcplant.co.za
DBZ Diesel Parts	JHB			087 751 4555			jhb@dbzdiesel.com
DBZ Diesel Parts	Cape Town		Rocco van den Bergh	(021)556 6502	(021)556 7467	082 454 5157	info@dbzdiesel.com
DBZ Diesel Parts	Durban			(031)564 8091/2	(031)564 8094		durban@dbzdiesel.com
D-MAN SALES	JHB	Sales	Wessels	072 172 7718			wessels@lpss.co.za
Deutz Diesel Engines	Meadowdale		Johan Reiners	(011)974 3549	086 671 5675	082 457 1542	miere@icon.co.za
Deutz Diesel Power	Durban	Branch manager	Nivern Pather	(031)700 2384	(031)700 2386	082 375 4912	nivern@deutz.co.za
DGI Trading	JHB		Henk Arnold	(010)065 0888	086 655 1042	083 233 0019	henk.arnold@dgitrading.co.za
Dirt Diggers	JHB		Vic Viljoen			082 822 3915	vicv@merchantwest.co.za
Dosco Hydraulic Eng. cc	Montague Gardens		David Laubscher	(021)551 2283		082 579 6465	
Dosco Hydraulic Eng. cc	Montague Gardens		Mike Hart	(021)551 2283		082 228 5031	
Dozer	Johannesburg		Graeme	(011)452 1224	(011)452 4469		info@dozer.co.za / www.dozer.co.za
Dozer	Johannesburg	Specialized Sales	Chris Cronje	(011)452 1224	(011)452 4469	082 491 5472	info@dozer.co.za / www.dozer.co.za
Dura Equipment Sales	Johannesburg	Sales	Prinsloo Munro	(011)918 4760	(011)918 3102	071 611 7281	prinsloo@durasales.co.za
Dura Equipment Sales	Johannesburg	Sales	Ernest Human	(011)918 4760	(011)918 3102	079 874 5458	ernest@durasales.co.za
Dura Equipment Sales	Johannesburg	Sales	Jerry van Niekerk	(011)918 4760	(011)918 3102	082 895 5611	jerry@durasales.co.za
Dura Equipment Sales	Johannesburg	Sales	Coenie Albertyn	(011)918 4760	(011)918 3102	083 251 8046	coenie@durasales.co.za
Dura Equipment Sales	Johannesburg	Sales	Curtis Brown	(011)918 4760	(011)918 3102	083 258 5784	curtis@durasales.co.za
Dura Equipment Sales	Cape Town	Sales	Pottie Potgieter	(021)988 6618		083 600 0729	pottie@durasales.co.za
Dura Equipment Sales	Cape Town	Sales	Gerrie du Randt	(021)988 6618		082 950 7040	gerrie@durasales.co.za
Dura Equipment Sales	Cape Town	Sales	Charmaine Lombard	(021)988 6618		082 777 1544	charmaine@durasales.co.za
Dura Equipment Parts	Johannesburg	Parts	Adriaan Booysen	(011)452 1224	(011)452 4469	071 234 6234	adriaan@durasales.co.za
Earth Mach	Mpumalanga		Chris	(017)843 2072	086 732 1739	083 323 8713	chris@earthmach.co.za
Earth Moving Plant & Trans.	Pinetown		Richard	(031)705 1770	(031)705 1781		richard@ept.co.za
JCJ Earthmoving Supplies	Pretoria	Sales	Jakes Claassen			076 016 5186	claassenjacob@gmail.com
EHD	Johannesburg	Sales	Lodewyk van As	(011)870 5000	(011)836 0474		ehd@ehd.co.za
EHD	Johannesburg	Sales	Daya Munthrie	(031)700 1160	(031)700 1169		ehd@ehd.co.za
Earthmoving Machine Sales	KZN	Sales		(031)777 1045	(031)777 1740	083 412 1077	jason@sa-ems.co.za
East Coast Gears	KZN	Sales	Adrian	(031)701 3500	086 224 3982	083 383 4943	eastcoastgears@gmail.com
Equipment Parts & Engines	Isando	Managing member	Attie vd bergh	(011)571 9000	(011)571 9100	082 657 8404	epe@global.co.za
Eqstra Const. Equipment	Isando		Shannon	(011)977 8006	086 674 9546		sheunis@nhconstruction
ESP	Isando	Div Manager	Gary Wright	(011)398 1700	(011)392 1444	082 449 6773	garyw@espa.co.za
ESP	Benoni	Div Manager	Adrian Erasmus	(011)845 2911	(011)422 4356	083 449 0519	adrians@espa.co.za
ESP	Pretoria	Reg Manager	Willie v.d Merwe	(012)804 6706	(012)804 0566	082 789 0828	williev@espa.co.za
ESP	Middleburg	Div Manager	Leon Bezuidenhout	(013)246 2520	(013)246 1240	083 778 9877	leonb@espa.co.za
ESP	Pinetown	Reg Manager	Shaun Clarke	(031)705 4200	(031)705 4114	082 413 1103	shaunc@espa.co.za
ESP	Cape Town	Reg Manager	Jaco Bekker	(021)945 1030	(021)949 8818	072 384 4901	jacob@espa.co.za
ESP	Port Elizabeth	Branch Supervisor	Rainier Gerber	(041)484 4575	(041)484 4561	083 698 1805	rainierg@espa.co.za
ESP	Bloemfontein	Reg Manager	Craig Wansbury	(051)432 4501	(051)432 4500	082 413 2708	craigw@espa.co.za
ESP	Kimberley	Branch Supervisor	Solly Shabangu	(053)831 8349	(053)831 8350	073 428 1574	sollys@espa.co.za
Filter Centre	Pinetown	Manager	Viyen Maharaj	(031)700 9074	(031)700 9679	076 727 3985	info@filtercentre.com
Filvent	Witbank		Warrick Atmore	(013)656 2726			
Fluid Blast Engineering	JHB		George Slabbert	082 550 1385 / 084 410 7163			fluid.blast@live.com
Full Blast Hydraulics	JHB		Andre Calitz	(011)900 3790			
Fusion Torque Components	JHB	Director	Eldred Carstens	(011)828 9023	(011)828-0403	083 460 6790	eldredfusion@telkomsa.net
GSW Spares	KZN	Sales	George Wildey	(031)829 6081/1/2/3		084 916 6037	george@gswwspares.com
Gears for Africa	JHB	Sales		(011)824 2017			
Gears for Africa	CPT	Sales		(021)5771030			
GET Spares	JHB	Sales	Raymond	(011)397 5276	(011)397 2129	082 655 2301	
GET Spares	JHB	Sales	Freddy	(011)397 5276	(011)397 2129	082 604 0045	
GET Spares	JHB	Sales	Clyde	(011)397 5276	(011)397 2129	082 581 5152	
Gillroy	Durban		Rob Gillit	(031)765 2745	(031)765 3911	083 661 2057	info@gillroyplant.co.za
G-Man Trading	JHB	Sales	Luke Jr.	(011)672 7011	086 605 7785		lukej@gman.co.za
Global Earthmoving Solutions PE		Sales	Graham Reeves	(041)581 0774	(041)581 6002	083 285 5240	grahamuc27@gmail.com
Global Earthmoving Solutions PE		Sales	Mark Reeves	(041)581 0774	(041)581 6002	073 211 5904	markreevesmk@gmail.com
Global Earthmoving Solutions PE		Sales	Craig Pretorius	(041)581 0774	(041)581 6002	078 588 3189	globalearthmoving@gmail.com
GO Industry - Dove Bid			John Cowing	0861 463 683		083 662 0237	john.cowing@liquidityseviccs.com
GR Spares	Pinetown	Sales	Gavin	(031)705 5463	(031)705 4180	082 452 8690	grspares@webstorm.co.za
HK Welding Services	JHB		Ruth	(011)593 2433			info@hkseviccs.co.za
Heavy Duty Group	JHB		Jannie Burger	(011)394 4125/6/7	(011)394 4118		mactool@global.co.za
Heavy Machine Spares	KZN	Owner	Frans de Wet			071 602 1372	frans@heavymachinespares.co.za
HPE Africa	Jet Park	Sales Manager	Sean Yates	(011)397 4670	(011)397 4683		sean.yates@hpeafrica.co.za
HPE Africa	Durban	Branch Manager	Adam Armitage	(031)700 3426	(031)700 3419		Adam.armitage@hpeafrica.co.za
HPE Africa	East London	Branch Manager	Leon Dreyer	(043)732 1428	(043)732 1601		leon.dreyer@hpeafrica.co.za
HPE Africa	Cape Town	Branch Manager	Gary Pnematicatos	(021)905 0581/2	(021)905 0396		Gary.P@hpeafrica.co.za
Hightech Equipment	JHB		Deon Harmse	(010)591 1287		084 323 4338	deon@hightechequipment.co.za
Industrial Engine Parts	Johannesburg	Sales	Morne	(011)868 5436	(011)900 1849	082 851 7514	sales@ieparts.co.za
IPD Parts	JHB	Director	Andrew Yorke	(011)873 2350	(011)825 7317		sales@ipdparts.co.za
ITR SA	JHB	National Sales Manager	Carel Zwiigelaar	(011)614 0070	(011)614 0081		carel.zwiigelaar@itrafrica.com
ITR SA	Middelburg	Branch Manager	Kobus Steyn	(013)590 5614	(013)590 5618		kobus.steyn@itrafrica.com
ITR SA	Bloemfontein	Sales Manager	Jacques Billing	(051)011 5620	(051)0115629		jacques.billing@itrafrica.com

COMPANY	BRANCH	DESIGNATION	CONTACT	TEL NO	FAX NO	A/H-CELL	EMAIL
ITR SA	JHB	U/C Manager	Sean Smit	(011)6140070	(011)6140081		sean.smit@itrafrica.com
ITR SA	CPT	Branch manager	Deon Duvenage	(021)9057340	(021)9057366		deon.duvenage@itrafrica.com
ITR SA	Kathu	Branch Manager	Michiel Jacobs	(053)7232245	0864286324		michiel.jacobs@itrafrica.com
ITR SA	EL	Branch Manager	Shaun Smith	(043)7483541	(043)7483528		shaun.smith@itrafrica.com
ITR SA	PE	Reg. Manager	Basil De Coning	(041)4512210	(041)4512226		basil.deconing@itrafrica.com
ITR SA	Pinetown	Sales Manager	Quintin Pillay	(031)9411133	(031)9411134		carel@itrafrica.com
ITR Africa	Zambia	Operations Manager	Andre Synders				andre.synders@itrafrica.com
ITR Africa	Namibia	Director	Hanjo Schierschmidt	+264(0)83 331 5160	+264(0)83 331 5161		hanjo.schierschmidt@itrafrica.com
J&T Earthmoving Maintenance			Alex Savage			081 895 5583	alex@earthmovingmaintenance.co.za
Jacobs Transport	Vereeniging	Sales	Guy Jacobs	(016)428 5529	(016)428 1087	083 544 0275	gys@jacobstransport.co.za
JBS Plant Hire	Klerksdorp		Tonie van den Heever	(018)469 1016/7	(018)469 2650	083 654 7809	jjvdh@lantic.net
Johnson Taylor	JHB	Sales Manager	Richard Hall	(011)614 5122	(011)614 7231	079 318 3730	richard@johnsonrf.co.za
JW Plant Hire and Sales	Welkom	Sales	Leon	(057)355 1119	(057)355 4454	083 253 6110	j.w.plant.telkomsa.net
Kaltire			Jacques Roux	(+27)12 548 9327		083 777 9497	jacques_roux@kaltire.com
Kappa Engineering		CEO	Gerhard Hauptfleisch	(011)828 5506/8	(011)828 1162	082 777 8381	gerhard@kappaeng.co.za
Kappa Engineering		M.D	Gerrie Visagie	(011)828 5506/8	(011)828 1162	082 575 2199	gerrie@kappaeng.co.za
Kappa Engineering		Procurement	Raymond Ellis	(011)828 5506/8	(011)828 1162	082 851 4997	proc@kspsseng.co.za
KDH Hydraulics	JHB		Ricus	(011)762 9001/2	086 758 1303	071 678 3746	ricus@kdhhydraulics.co.za
Kemach JCB	JHB			(011)826 6710			
Kemach JCB	Middleburg			(013)244 1839			
Kemach JCB	Pretoria			(012)548 2956			
Kemach JCB	Bloemfontein			(051)432 3978			
Kemach JCB	Durban			(031)700 8278			
Kemach JCB	Richards Bay			(035)751 2718			
Kemach JCB	CPT			(021)949 7442			
Kemach JCB	Port Elizabeth			(041)453 1819			
Kemach JCB	East London			(043)732 1902			
Kemach JCB	George			(044)878 0366			
Kemach JCB	Mthatha			(047)531 1688			
KHD Electrical	JHB		Marie-lize	082 610 3774	086 5822 312	082 904 2707	marilize@khdiesel.co.za
KHD Electrical			Willie	082 610 3774	086 5822 312		willie@khdiesel.co.za
KHD Electrical			Francois	082 610 3774	086 5822 312		francois@khdiesel.co.za
KHD Electrical		Sales		082 610 3774	086 5822 312		sales@khdiesel.co.za
Komatsu	Cape Town	Sales	Frederick van Ryneveld	(021)951 1251	(021)951 5693	082 317 2849	info@komatsu.co.za
Komatsu	Gauteng	Sales	Breton Alexander	(011)923 1000	(011)923 1111		info@komatsu.co.za
Komatsu	Pinetown	Sales	Jacques van der Sandt	(031)710 4950	(031)701 8032	082 888 0995	info@komatsu.co.za
Komatsu	Port Elizabeth	Sales	George Hyman	(041)452 6555	(041)452 6539	082 882 9576	robd@komatsu.co.za
Komatsu	White River	Sales	Fortune Mathiba	(013)758 9900	(013)751 3296	083 675 1756	pietvw@komatsu.co.za
Komatsu	Wolmeransstad	Sales	Piet du Toit	(018)596 2252	(018)596 2252	083 271 3567	info@komatsu.co.za
Komax Spares	JHB		Jacques	(011)664 8828	(011)664 6690	082 616 1654	jacques@jsaearth.co.za
Kruiper Spares	Port Elizabeth	Sales	Gary	(041)585 6455	(041)585 6494	083 321 0819	kruiper@global.co.za
Kruiper Spares	Port Elizabeth	Sales	Bill	(041)585 6455	(041)585 6494	082 569 2740	kruiper@global.co.za
Kruiper Spares	Port Elizabeth	Sales	Henzel	(041)585 6455	(041)585 6494	083 657 1858	kruiper@global.co.za
Kruiper Spares	Port Elizabeth	Sales	Marius	(041)585 6455	(041)585 6494	083 653 6187	kruiper@global.co.za
Leo Hydraulics			Sybil Singh	(011)976 1941			
LiuGong Machinery SA	JHB	Parts		(011)979 3636	0811 396 3819		manager.za@burgersafrica.com
LNE Agri Earth (Pty) Ltd	JHB	Sales		0861 888 008 / 083 327 3237			lne@LNE-AgriEarth.com
M&R Power	JHB		Rakesh	(011)616 8093	(011)615 9094	083 288 3352	rakesh@modi.co.za
Mae Equipment	Witbank	Sales	Thomas Mittag	072 545 6223			info@mae-equipment.com
Mafika Engineering	JHB			(011)334 1120			
Mareng Plant & Mining	Bloemfontein			(053)841 0415	(053)841 0450		jaco@marange.co.za
Marsay Equipment	Johannesburg		Tim Marsay	(011)781 7410	(011)787 0649	083 654 4248	tim@marsayequip.co.za
Masslift Africa Mitsubishi Forklifts Dbn	Product Support/Spares		Sheldon Victor	(031)700 8480	(031)700 8490	083 469 9881	sheldon@mlift.co.za
MCC Africa	DBN		Gyfford Scruby	(031)563 5035		084 516 2246	gyfford@mccafrika.co.za
McKenzie Plant Sales	Richmond KZN		Stuart McKenzie	(033)212 2181		082 558 7901	sjm@mckenzieplant.co.za
Midplant Services	JHB	Sales	Kellas	(011)967 0055/60	086 606 4597	083 675 1385	sales@midplant.com
Midplant Services	JHB	Sales	Jeff	(011)967 0055/60	086 606 4597	083 657 6123	sales@midplant.com
Midplant Services	JHB	Sales	Lee	(011)967 0055/60	086 606 4597	083 459 1695	sales@midplant.com
MilltechEengineerig			Neil	(011)421 7821	(011)422 2716		eparts@e-parts.co.za
Multi One Evolution	Benoni		Lofty Van Wyk			082 888 8899	
Mzantsi Transmissions	Johannesburg	Sales	Darryl Cilliers	(011)868 5130	086 634 7904	071 684 5784	info@gearboxes.me
New Beginnings Designs	JHB		Suken	(011)791 4120	(011)791 5459	082 923 7987	suken@nbdesigns.co.za
NI-DA			Hennie	(034)940 1206			hennie@nida.co.za
One Stop Procurement	Benoni		Roger Melenas	(011)791 4120		079 493 4486	
Opsical mining Supplies	Middleburg		Murat Ahmet Gunay	(013)612 0505			
P&R Earthmoving	JHB	Sales	Scott	(010)823 6385			scott@prearthmoving.com
P&R Earthmoving	JHB	Sales	Grant	(010)823 8821			grant@prearthmoving.com
P&R Earthmoving	JHB	Sales	Ladis	(010)823 7322			ladislas.l@pandearthmoving.com
P&R Earthmoving	JHB	Sales	Greg	(010)823 6276			greg@prearthmoving.com
Pacific Construction Equipment Fairleads Benoni			Mark	(011)396 1191	(011)454 6062	082 441 4587	markivan@mweb.co.za
P&R Earthmoving	JHB	Sales	Greg	(010)823 6276			greg@prearthmoving.com
Pacific Construction Equipment Fairleads Benoni			Mark	(011)396 1191	(011)454 6062	082 441 4587	markivan@mweb.co.za
Paramount Tracks	JHB	Sales		(011)007 3258		082 894 5547	sales@paramounttracks.com
PEX Hydraulics	Cape Town	Sales	Nick Kotzee	(021)556 3232	(021)557 9948		nick@pex.co.za
PEX Hydraulics	Johannesburg	Sales	Mark Dickason	(011)882 8413	(011)882 8428		mark@pex.co.za
Pex Hydraulic Repairs	KZN	Sales	Priscilla Shanker	(031)705 5050	(031)705 5050	084 429 8654	Priscilla@pexkzn.co.za
Pilot Crushtec	JHB			(011)842 5600	(011)842 5610		sales@pilotcrushtec.co.za
Plant Finder	PE		Shawn Michell	(041)379 1717	(041)379 4753	082 568 4033	shawn@plantfinder.co.za
Powertrans Rebuild Centre	Isithebe		Ricky Naidoo	(032)459 5700			info@powertrans.co.za
Power Transmissions Technology				(011)022 857011	(011)973 4455		info@pttech.co.za
Primeplant	JHB		Francois	(011)979 4853	(011)396 1653		spares@primeplant.co.za
Queensburgh Plant Sales	JHB	Used Sales	Wikus	(011)964 1631	0119641468	083 235 5665	qpsales@mweb.co.za
Queensburgh Plant Sales	JHB	New Sales	Albert	(011)964 1467		082 652 4907	qpsales@mweb.co.za

COMPANY	BRANCH	DESIGNATION	CONTACT	TEL NO	FAX NO	A/H-CELL	EMAIL
R21 Trucks	Centurion	Sales Manager	Mark Noble	(011)206 8958	(011)206 8959	082 226 2221	mark@r21trucks.co.za
R21 Trucks	Mpumalanga	Branch Manager	Nico Kotze	079 491 4334	(011)206 8959		nico@sinoplant.co.za
R21 Trucks	Gauteng	Sales	Brendon Van Rooyen	(011)206 8958	(011)206 8959	0713607172	brendon@sinoplant.co.za
Randle Parts	KZN	Sales	Stan	083 653 4270			
Randle Parts	KZN	Sales	Justin	083 639 1982			
Randle Parts	KZN	Sales	Geoff	074 843 5298			
Randline Components	JHB	MD	Patrick	(011)452 8427	086 509 3539	082 780 8084	pw@randline.com
Rankin Training	DBN		Marcel	(031)702 8447		082 909 9070	
Reef Fuel Injection Services	JHB	Manager	Warren Hauser	(011)873 2354	(022)825 7317		warren@reeffuel.co.za
Rent a Dozer	Marble Hall	Owner	Theodor Kleynhans	(013)261 1746	086 205 1631	083 459 5593	rentadozer@telkomsa.net
Replacement Spares Unltd.	Pretoria	Sales	Paul	(012)803 8714	(012)803 8991	082 574 7838	paul@rsu.co.za
Rham Equipment	Olifontsfontein			(011)203 7900	(011)823 5662		rham@global.co.za
Rhino Excavator Hammers	JHB		Paul	(011)397 3327	086 503 1602	0861115422	sales@rhinohammers.co.za
Rhino Excavator Hammers	JHB		Clive	(011)397 3327	086 503 1602	071 670 8707	sales@rhinohammers.co.za
Road Products International	Port Shepstone			(039)973 2490	(039)973 2400		enquiries@roadproductsinternational.co.za
RobusTrack	PE	Sales		(031)004 2341			sales@robustrack.co.za
Rocktech Earthmoving Wearparts	JHB	Manager	Derek Swift	(011)793 6838	(011)793 6626	082 561 4682	russell@rocktech.co.za
Roger's Undercarriage	JHB			(011)964 2695	(011)9642415	0839745851	rogers.uc@mewb.co.za
RSU	Pretoria		Paul Pelsler	(012)803 8714	(012)803 8991	082 920 9313	paul@rsu.co.za
Ruspet Exhausts	JHB		Russell	(011)827 2824	(011)8272850	083 448 7669	
Sambane Earthmoving Transmissions	Elrode South		Matthew Woodrow			079 242 6894	
Scotty's Plant Hire	Pinetown		Ashley Scott	(031)700 8000	(031)700 3844		scottys.plant@telkomsa.net
Scotty's Plant Hire	Pietermaritzburg			(033)386 1653/14	(033)386 7003		scottysph@telkomsa.net
Sclanders Mech	Natal	Sales	Dave Yeomans	(031)700 9024	(031)700 8082	083 653 3724	sclandersmeck@telkom.sa.net
Scribante Plant	JHB	Sales	Conrad	(011)466 9232	(011)466 9233	082 781 9481	conrad@scribanteplant.co.za
SEM South Africa	JHB	Manager	Barry Fang	(011)392 2900		072 3999 817	bm@semrsa.co.za
SEM South Africa	Sales Representative		Ewan Bradley	(011)392 2900		083 792 5044	eb Bradley@bwsem.co.za
Sew's Plant & Civils	KZN		Sunash	(031)507 2491		082 284 5082	
Shin Li Trading	Johannesburg		Joe	(011)396 1081/87	(011)396 1156	082 555 3058	sales@shinlitrading.co.za
Sino Plant	Gauteng	Sales Manager	Mark Noble	(011)206 8958	(011)206 8959	082 226 2221	mark@sinoplant.co.za
Sino Plant	Mpumalanga	Branch Manager	Nico Kotze	079 491 4334	(011)206 8959		nico@sinoplant.co.za
Sino Plant	Gauteng	Sales	Jorge Mpumfumo	(011)206 8958	(011)206 8959	082 316 2780	jorge@sinoplant.co.za
Sinotruk	Centurion	Sales Manager	Mark Noble	(011)206 8958	(011)206 8959	082 226 2221	sales@sinotruk-centurion.co.za
Sinotruk	Malelane	Branch Manager	Nico Kotze	079 491 4334	(011)206 8959		sales@sinotruk-malelane.co.za
Sinotruk	Centurion	Sales	Danie Van Vuuren	0112068958	(011)206 8959	082 784 9023	info@sinoplant.co.za
Sintech	Johannesburg	Sales	Jacob Nkabinde	(011)823 2359	(011)823 2387		sales@sintech.co.za
SJM Industrial	Meyersdal		Jeanie Schenck	(016)341 2909			
SparePower	Johannesburg	Parts Sales	Terry Wallace	(011) 845 4184		082 457 2804	terry@sparepower.co.za
SparePower	Johannesburg	Parts Sales	Elden de Beer	(011) 845 4184		082 921 5617	elden@sparepower.co.za
SparePower	Johannesburg	Machine Sales	Gary Furno	(011) 845 4184		082 651 5914	gary@sparepower.co.za
SparePower	Johannesburg	M.D	Fred Sprentzel	(011) 845 4184		082 552 2217	fred@sparepower.co.za
STM Mining	Johannesburg	Sales	Barney v Rooyen	(011)894 6192	086 691 9662	072 086 6163	stmmining@telkomsa.net
Terramite Africa	DBN	Sales	Warren	(031)461 4177	(031)461 4194	083 555 1602	sales@terramite.co.za
Terex (National Office)	JHB			(011)966 2000			www.terexafrica.co.za
Terex	Cape Town			(021)959 8800			www.terexafrica.co.za
Terex	Durban			(031)792 4960			www.terexafrica.co.za
Terex	Kathu			(053)723 2944			www.terexafrica.co.za
Terex	Kimberly			(053)841 1960			www.terexafrica.co.za
Terex	Middleburg			(013)246 2246			www.terexafrica.co.za
Terex	Rustenburg			(014)592 3412			www.terexafrica.co.za
The CAT Rental Store	Durban			(031)569 8500	(031)569 8572	082 909 9188	mnicolia@barloworld-equipment.com
The Seat Connection	Johannesburg	Sales	Lydia/Graham	(011)452 6802/6814	(011)452 7103		info@seatconnection.co.za
Trench	KZN	Sales	Wayne			074 119 5621	
Tinko Plant	Pretoria	Sales	Pierre	(012)808 2425	(012)808 2413	082 678 9553	pierre@tinkoplant.co.za
Tommy's Auto Parts	Newcastle		Ahmed		0343756660	072 889 2581	exportintl@aol.com
Tractor and Grader Supplies	Johannesburg	Sales	Jeannine	+27 11 392 7533	+27 11 392 7590		jeannine@tags.co.za
Tractor and Grader Supplies	Witbank	Sales	Francois	+27 87 943 8661	+27 11 392 7590		francois@tags.co.za
Tractor and Grader Supplies	Durban	Sales	Gary	+27 31 700 8250	+27 31 700 8252		gary@tags.co.za
Tractor and Grader Supplies	Cape Town	Sales	Morne	+27 21 946 1561	+27 21 946 1562		morne@tags.co.za
Tractor and Grader Supplies	Swaziland	Sales	Tiago	+268 2 518 4548	+268 2 518 4553		tiago@tags.co.za
Tractor and Grader Supplies	Namibia	Sales	Handre	+264 61 264710/1/2	+264 61 264713		handre@powerpartnamibia.co.za
Triplant Sales	JHB		Joe Venter			079 872 0465	
Trysome	JHB			(011)823 5650	(011)823 5662		www.trysome.co.za
TTC Engineering & Hydraulics	JHB		Sharlene Kleinhans	(011)835 2837			
Turboworks	Centurion	Sales		(012)653 7507	086 583 4647	082 824 8037	sales@turboworks.co.za
Unity	Johannesburg	Sales		082 457 0221	086 681 9667		unitysalesandservices@gmail.com
VR Diesel & Turbo			Wayne	(013)246 1003		083 310 9235	wayne@vrdiesel.net
Vendal Civils	JHB		Anton	(011)801 4911/2		082 923 5397	vendels@mweb.co.za
Vendel Equipment Sales	JHB	Sales	Jaap	(011)801 4911/2	(011)801 4914	082 892 1327	associated1@xnet.co.za
Vita Plant & Equipment	Brits	Machine Sales & Repairs	Costa Voyiatzakis	(012)252 2915	(012)252 2683		Nicholas@vitaplant.co.za
Vita Plant & Equipment	Brits	Used Parts Sales	Elsa Oosthuizen	(012)252 2915	(012)252 2683		Elsa@vitaplant.co.za
Vita Plant & Equipment	Brits	Used Parts Sales	Lisa Coetzee	(012)252 1237	(012)252 2683		Lisa@vitaplant.co.za
Vortex transmissions	JHB		Johan	(011)452 4430		082 333 1005	vortex@mweb.co.za
Vortex transmissions	JHB		Jan	(011)452 4430		082 333 1004	vortex@mweb.co.za
WH Auctioneers	Midrand	Sales	Shannon	(011)574 5700		084 520 5000	info@whauctions.com
WH Auctioneers	Midrand	Sales	Mathew	(011)574 5700		084 252 5000	info@whauctions.com
WH Auctioneers	Midrand	Sales	Tim	(011)574 5700		082 371 1069	info@whauctions.com
WAHA Equipment	Midrand	Sales				076 037 9516	will@waha.co.za
Wearpact	JHB	Sales	Linda	(011)845 3234	(011)421 8761	083 453 3960	mwwrp@mweb.co.za
Wilson Plant	CPT	Sales	Miles Wilson	(021)534 9536	086 719 0593	082 928 9215	wilsonplant@vodamail.co.za
Yellow Metal SA	Pretoria	Sales		(012)335 0745	082 805 8220		sales@ymsa.co.za
ZF Services South Africa	JHB	Sales: Service Parts	Nicholas Muyambi	(011)457 0031	086 567 1281	082 776 2759	Nicholas.Muyambi@zf.com
ZF Services South Africa	JHB	Workshop: Off-road division	Johan Posthumus	(011)457 0091	086 750 8582	071 470 6647	Johan.Posthumus@zf.com



QPS

QUEENSBURGH PLANT SALES



Keep it simple buy quality

**Your friendly supplier of
new and used
earthmoving parts**

**KOMATSU – HITACHI – HYUNDAI
DOOSAN CATERPILLAR – NEW
HOLLAND – TEREX – JCB CASE
CONSTRUCTION – CARRARO
CUMMINS**

**EARTHMOVING
MACHINE PARTS
SALES REPAIRS**

**KEEP IT SIMPLE
BUY QUALITY**



Albert
082-652-4907
albert@qps.africa

Riccardo
061-224-6829
riccardo@qps.africa

Madeline
082-328-9370
madelaine@qps.africa

Dave
082-708-7965
dave@qps.africa

Werner
079-740-2088
werner@qps.africa

Wikus
083-235-5665
wikus@qps.africa

WWW.QPS.AFRICA
TEL (011) 964 1631

When it comes to Aftermarket Support, we have it all!

Our solutions...

- TRAINING
- WARRANTY
- MAINTENANCE CONTRACTS
- LUBE CHECK
- LUBRICANTS
- FLEETMATIC
- PARTS
- TECHNICAL SUPPORT
- SERVICE KITS
- SPECIAL TOOLS
- REMAN
- PREOWNED

The benefits...

- ACCREDITED
- PROTECTION
- AVAILABILITY
- PREVENTATIVE
- ENGINEERED
- PERFORMANCE
- ORIGINAL
- RELIABLE
- EXPERTS
- INTERNATIONAL
- OPTIMAL
- PREMIUM
- COMPONENTS
- TESTED / ENDORSED

The search for excellent Aftermarket support is over. Every which way you look at it – front, backwards or diagonally – Bell Equipment has all your aftermarket needs covered:

P	R	E	V	E	N	T	A	T	I	V	E	I	O	N	A	Y	F	R	P
H	D	F	S	L	O	O	T	L	A	I	C	E	P	S	T	T	O	F	E
P	E	R	L	S	R	A	E	U	F	L	E	E	L	B	A	I	L	E	R
R	R	K	C	E	H	C	E	B	U	L	D	M	A	I	N	L	A	S	F
E	E	N	M	R	E	D	O	R	T	D	E	T	S	E	T	I	M	B	O
O	E	A	U	V	U	T	C	I	T	S	T	W	O	I	N	B	I	P	R
W	N	S	N	I	U	O	M	C	P	S	I	A	A	N	S	A	T	R	M
N	I	B	Q	C	M	J	L	A	R	H	D	V	T	R	P	L	P	O	A
E	G	R	U	E	U	E	L	N	T	D	E	J	R	O	R	I	O	T	N
D	N	Y	N	K	I	N	U	T	D	I	R	P	A	I	L	A	N	E	C
M	E	V	T	I	M	I	O	S	E	R	C	N	I	A	M	V	N	C	E
M	A	I	N	T	E	N	A	N	C	E	C	O	N	T	R	A	C	T	S
P	A	R	T	S	R	S	E	P	X	E	A	R	I	F	S	X	D	I	Y
R	W	T	R	O	P	P	U	S	L	A	C	I	N	H	C	E	T	O	B
A	P	A	F	G	J	A	K	L	E	B	N	M	G	W	A	E	R	N	U
E	X	P	E	R	T	S	K	C	O	M	P	O	N	E	N	T	S	P	L
S	D	E	S	R	O	D	N	E	B	O	R	I	G	I	N	A	L	B	E
V	E	X	R	E	K	L	I	N	T	E	R	N	A	T	I	O	N	A	L

With Bell, the search is over!

FOLLOW US ON    

Tel: +27 (0)11 928 9700 • E-mail: bellparts@bell.co.za
www.bellequipment.com

Strong Reliable Machines
 Strong Reliable Support

