

your sourcing solution for new & used equipment & machinery

earthbroker

email: janine@earthbroker.co.za web: www.earthbroker.co.za

volume 16 issue 9 September 2020



SPARE PARTS
REMAN CENTRE
HYDRAULICS CENTRE
TEST BENCH
FIELD SERVICE
COMPONENTS
TRANSMISSIONS
ENGINES
FINAL DRIVES



All Africa Supplies

GLOBAL REACH - LOCAL SUPPLY

sales@allafricasupplies.net | www.allafricasupplies.net

011 918 9976



**AUTHORIZED
PARTS DISTRIBUTOR**

Follow us on Social Media

 Facebook / All Africa Supplies

 Google+

 Instagram / @allafricasupplies



Our fleet of UNIC Spider Mini Cranes **THRIVE AND EXCEL** in environments where other cranes **CAN'T AND ARE AFRAID TO GO**



SPIDER MINI CRANES
SOUTH AFRICA

Head Office - 035 787 0679

Bob - 082 570 5781 | bob.uniccranes@bbplant.co.za,
Tara - 079 694 3978 | tara.uniccranes@bbplant.co.za

JHB Office : Sean - 064 754 8419 | sean.uniccranes@bbplant.co.za

DBN Office: Phil on 071 118 7145 | phil.uniccranes@bbplant.co.za

Visit our website at www.bbplant.co.za

RENTALS | SALES | SERVICE

Head Office - 55 Knutzen Street, Empangeni, Kwazulu Natal

Johannesburg Office - 55a Harris Ave, Sebenza, Edenvale

Contact Details

Sales Manager & Editor
Janine Sargeant
083 456 4027

Design / Layout
Dylan McDonald
082 485 3001

Sales Contact
083 456 4027

Electronic Origination & Printing
ROC Media

The Editors welcome articles and
photographs, which will be
considered for publication
on their merit.

Disclaimer: The Editors and
Publisher do not necessarily
endorse any views or
statements made
by contributors.

Janine Sargeant
083 456 4027
(FAX) 086 685 1258
janine@earthbroker.co.za

Physical Address:
Suite 16, Hillcrest Office park
2 Old Main Road, Hillcrest, 3610

Postal Address:
P.O. Box 2484,
Hillcrest,
3650

Banking Details:
Earthbroker
First National Bank
Hillcrest
Code: 223726
Account No.: 62295649308



Audit Bureau of Circulations
of South Africa

We are ABC accredited

Pamms Certificate no:
2A8DD9F60574FFC2A4EEEE01A



Manufacturer's names, numbers
& descriptions are used for
reference purposes only & it is
not implied that any part listed
is the product of the manufacturers.



Cummins Zambia

Cummins Zambia partners with CAMFED
to empower 500 women entrepreneurs
over a three-year period



GOSCORM Earthmoving

Goscorm Earthmoving Equipment
appoints Melanie Uys as Kathu
Branch Manager



HPE Africa

Hyundai R260LC-9S fuel-efficient
crawler excavators



RHAM Equipment

Blast Hole Drill Rig (BHDR45).
We know the drill!



Shamrock Holdings

Shamrock Handling Concepts - Moffett
truck-mounted forklift trucks for high-
efficiency and enhanced safety

Industry News

Stay up to date with the latest Industry news

Contents

| | | | |
|--|---------------|--------------------------------------|---------------|
| Advertisers Index | 92-93 | Machinery Contractors | 74 |
| All Africa Supplies | 1,48 | Marsay Equipment | 34 |
| Amalgamated Plant | 18 | McKenzie Plant | 72 |
| Associated Equipment | 49 | Mid Plant Services | 66 |
| Atlas Masjiene | 8 | Mzantsi Transmissions | 36 |
| B & B Plant | 2 | Nduna Spares | 32 |
| BMH Trading International | 19 | One Stop Procurement | 56 |
| Bell Equipment | 60,100 | P & R Earthmoving | 33 |
| BLC Plant | 50 | Paramount Equipment | 64 |
| BLC Trucks | 51 | Paramount Tracks | 65 |
| BLC Parts & Components | 52 | Plant Finder | 22-23 |
| Blumaq South Africa | 42-43 | Powertrans | 63 |
| Capital Equipment Parts | 16-17 | Power Transmission Technology | 5 |
| Cat ER | 36 | Prime Plant | 62 |
| Centrax | 20-21 | Queensburgh Plant Sales | 99 |
| CTC Plant Company (PTY) Ltd | 61 | Ramm Parts | 35 |
| Dozer Parts | 68-69 | Rhino Excavator Hammers | 71 |
| Dura Sales | 38-40 | Ruspet Exhausts | 18 |
| Earthmoving Machine Sales | 78-79 | Shin Li Trading | 58-59 |
| Earth Mach | 10 | Sintech | 4 |
| East Coast Gears | 18 | Spec-Cast Wear Parts | 30-31 |
| ESP | 12-15 | STM Mining | 6-7,44 |
| Filter Centre | 8 | TJB Earthmoving | 28 |
| Force 8 | 76 | Tractor Grader Supplies | 24-25 |
| Gears for Africa | 57 | The Seat Connection | 18 |
| Grindright Engineering Services | 37 | Transand | 45 |
| Industrial Plant Solutions | 70 | Turboworks | 9 |
| ITR Africa | 54-55 | Vortex Transmissions | 41 |
| Inmine - Inala Mining Services | 46-47 | Weichai & SEM Parts | 73 |
| KDH Hydraulics | 53 | Wearpact | 27 |
| Liugong | 67 | Machine Classifieds | 88-91 |
| LNE Agri Earth (Pty) Ltd | 29 | Quick Reference | 95-98 |
| MAE Equipment | 11 | | |

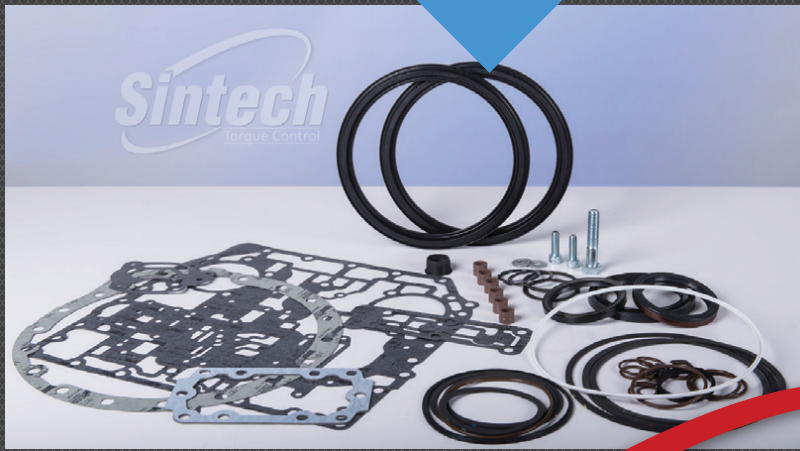
For Terms & Conditions on our advertising please look at page 94
To receive a free copy of our magazine please email janine@earthbroker.co.za



ALLISON
TRANSMISSION
DISCS



ALLISON
SEAL KITS



ORIGINAL
EQUIPMENT
SUPPLIER



www.sintech.co.za

+27 (0)11 823 2359

FOR ALL YOUR VOLVO EARTHMOVING SPARE PARTS

visit pttech.co.za to view our online
EARTHMOVING DRIVELINE product catalogue

***SEPT 2020 UPDATE**
ADDITIONAL VOLVO PARTS



STILL KEEPING YOUR PLANT IN MOTION

Phone: 011 022 8570

Email: info@pttech.co.za

Web: www.pttech.co.za

GOOD USED EARTHMOVING PARTS AND EQUIPMENT

STM
MINING EQUIPMENT PTY(LTD)

Tel: (011)894-6192 / (011)894-3377

Fax: (011)894 7914

barney@stmmining.co.za

donovan@stmmining.co.za

Office Hrs: Mon-Fri 07h00-17h00



STM Mining Equipment (PTY) LTD was established in 2002 and has been supplying customers good second hand components and parts for earth moving machines in 2016 we started field service with technician's and recon components and repairing machines.

We supply goods to a wide range of industries such as construction, civil, plant hire, mining and farming industries and as far as Australia, America, Botswana, Zimbabwe and a lot of locally supplied customers to. We have been supplying good secondhand parts to the market since 2002.

OUR PRODUCTS & SERVICES

We supply second hand machines and good used parts for most makes of Earthmoving Equipment ie: Cat, Komatsu.

We buy second hand machines to strip for components and parts, dead or alive to keep in stock for customers. We have a repair shop where we do components and Repair machines for Customers.

**Engines | Engine Blocks | Sub Assemblies
Crankshafts | Cylinder heads | Engine Parts
Undercarriage | Frames & Body | Components
Portable Diesel Compressors**

PO Box 6456, Dunswart 1508, 40 Michelson RD. Westwood, Boksburg

www.stmmining.co.za

GOOD USED EARTHMOVING PARTS AND EQUIPMENT

STM

MINING EQUIPMENT PTY(LTD)

Tel: (011)894-6192 / (011)894-3377

Fax: (011)894 7914

barney@stmmining.co.za

donovan@stmmining.co.za

Office Hrs: Mon-Fri 07h00-17h00



D375-5
STRIPPING FOR PARTS



FULLY REBUILT 140G GRADER
WITH WARRANTY



325C
STRIPPING FOR PARTS



980G FRONT END LOADER
FOR STRIPPING OR REBUILD



WA500-3 RUNNING BUT
FOR STRIPPING OR REBUILD



GOOD RUNNING 740
(B1P) SERIAL



GOOD RUNNING ZAXIS 200
UNDER 6 000 HRS



275-5
NO TRANSMISSION STRIPPING



938F
GOOD RUNNING MACHINE



950H
STRIPPING FOR PARTS



740 ADT DUMPERS X 2 RUNNING
FOR REBUILD OR STRIPPING



Corner of Great North & Stanley Road
Brentwood Park AH, Johannesburg
Dewald Hattingh: +27(0) 72 547 2198 +27(0) 11 973 3737



CAT 120G
R550 000,00 + VAT



CAT D6H
R850 000,00 + VAT



BOMAG BW212
R220 000,00 + VAT



CAT 938G
R520 000,00 + VAT



CAT 422E
R400 000,00 + VAT



SHANTUI SD13
R450 000,00 + VAT



DRESSER A608
R450 000,00 + VAT



BELL L2106D
R650 000,00 + VAT

ATLASMASJIENE.CO.ZA | INFO@ATLASMASJIENE.CO.ZA

FILTER CENTRE

Leaders in Heavy-Duty Filtration



**Quality Lubricants
NOW IN STOCK**



Klenz
Pure Protection

www.filtercentre.com
info@filtercentre.com
031 700 9074





TURBOWORKS

"Best quality turbochargers - no compromise"

TURBOWORKS can supply off-the-shelf turbochargers or repair most models of Turbochargers for Earthmoving and Industrial machinery including Caterpillar, Komatsu, Cummins, Volvo, Liebherr, Hitachi, Doosan, John Deere etc.

For all Construction and Mining machine turbocharger requirements, contact TURBOWORKS for the best and most cost-effective solution.

TURBOCHARGERS

- New
- Reconditioned, service-exchange
- Repairs



**POPULAR SERVICE-EXCHANGE TURBOCHARGERS,
AVAILABLE FOR IMMEDIATE DELIVERY.**

SECTORS

- Mining
- Plant hire
- Transport
- Agriculture
- Passenger vehicle
- Generators



- All makes and models
- 12 Months warranty
- Free "Strip-and-quote"
- Pick-up and deliver
- Supplying the entire African continent



Tel: +27 12 653 7507

Email: sales@turboworks.co.za

www.turboworks.co.za

After-hours: +27 82 824 8037



EARTH MACH
 TEL: 017 843 2072
 CELL: 083 232 8713
 WWW.EARTHMACH.CO.ZA

MINING AND CONSTRUCTION EQUIPMENT

**SPECIALISING IN
 GALLION, DRESSER,
 KOMATSU, SEM &
 CATERPILLAR**

MACS
auto
 www.macsauto.co.za

**REPAIRS ON ALL TYPES OF EQUIPMENT
 CUMMINS ENGINE CONVERSION ON KOMATSU
 TLB'S / REPAIR & SUPPLY OF NEW RADIATORS
 BREAK & CLUTCH REPAIRS / GENERAL REPAIRS
 & REBUILDING / AUTO ELECTRICAL REPAIRS
 & REWIRING / FUCHS OILS & GREASES /
 FIELD SERVICE REPAIRS**

SEM
 A Caterpillar Brand

**THE PERFORMANCE YOU NEED,
 THE SUPPORT YOU EXPECT**

OTHER EQUIPMENT



SEM
 A Caterpillar Brand

GENIUNE SEM PARTS QUALITY AT ITS BEST

Steyn St. 34, Carolina, 1185.
 PO Box 1446, Carolina 1185
 Tel. (017) 843 2072 Fax. 086 732 1739
 Cell. 083 232 8713

chris@earthmach.co.za
www.earthmach.co.za
 VAT REG No. 4280260417
 BBEE Level 2

THOMAS MITTAG
Cell: +27 72 545 6223
Mail: info@mae-equipment.com

MAE Equipment
Witbank/Riverside
(Yard)

www.mae-equipment.com

MAE EQUIPMENT

CAT 349DL



2015 model
low hours / import unit
Call for Price

CAT 390DL-ME



2014 model
10.800h
Call for Price

DM30 DRILL RIG



2008 model
16.500h
Call for Price

ATLAS DM30 DRILL RIG



2012 model
low hours
Call for Price

SANDVIK DP1500 PANTERA



2012 model
low hours
6 units available

ATLAS-COPCO D65 DRILLS



EPIROC D65 FLEXIROC & SMARTROC
Drills available / **Call for Details**

KOMATSU D155AX-7



2013 model
refurbished / imported EU
Call for Price

KOMATSU D275 DOZER



2012 model
5.700h / new undercarriage
Call for Price

D8T DOZER



2011 model
low hours / import unit
ZAR 3.700.000

CAT 773F



2010 model
4 units available
Call for Price - Finance Option

CAT 773E



2003 model
low hours
Make an offer

CAT773F WATERBOWSER



2008 model
Call for Price

VOLVO A30D



2008 model
conversion to waterbowser
ZAR 1.550.000

WE BUY ALL KINDS OF EARTHMOVING, CONSTRUCTION OR MINING MACHINERY

WE PAY CASH WITHIN 24 HOURS

PLEASE CONTACT OR SEND OFFERS TO [INFO@MAE-EQUIPMENT.COM](mailto:info@mae-equipment.com)

„Your Partner for new & used Machinery and Equipment.“

www.mae-equipment.com

www.espa.co.za

ESP THE PROVEN ALTERNATIVE

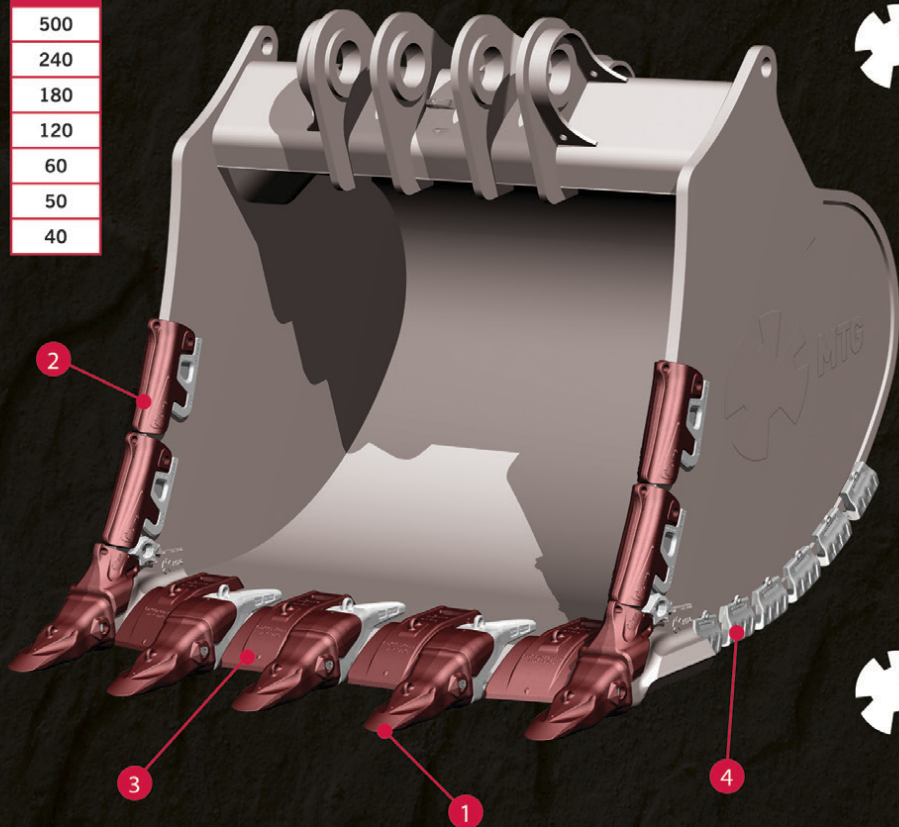


No limits innovation

INNOVATIVE HAMMERLESS SYSTEM FOR HEAVY DUTY CONSTRUCTION, QUARRYING AND MINING.

Tooth-adapter fitting system increasing the productivity of excavators from 60 to 400 tonnes, loaders from 70 to 350 tonnes.

| SERIES |
|--------|
| 500 |
| 240 |
| 180 |
| 120 |
| 60 |
| 50 |
| 40 |



STARMET

- 1 TOOTH-
ADAPTER
SYSTEM



PROMET

- 2 WING
SHROUD



PROMET

- 3 LIP
SHROUD



- 4 HEEL SHROUDS

BENEFIT FROM OUR 9 MONTHS WARRANTY PERIOD ON NEW PARTS

ESP Johannesburg
Tel: (011) 398-1700

ESP Benoni
Tel: (011) 845-2911

ESP Pretoria
Tel: (012) 804-6706

ESP Middelburg
Tel: (013) 246-2520

ESP Pinetown
Tel: (031) 705-4200

ESP Cape Town
Tel: (021) 945-1030

ESP Port Elizabeth
Tel: (041) 484-4575

ESP Bloemfontein
Tel: (051) 432-4501

ESP Kimberley
Tel: (053) 831-8349



ISO 9001 Certified

Manufacturers' names, numbers, symbols and descriptions are used for reference purposes only and it is not implied that any part listed is the product of the manufacturers.

www.espa.co.za

ESP THE PROVEN ALTERNATIVE



ESP OFFERS A COMPLETE RANGE OF GROUND ENGAGING TOOLS
FOR MOST MAKES OF EARTHMOVING EQUIPMENT.



These include the following parts:

- Forged and cast bucket tips
- Forged and cast bucket adapters
- Grader blades
- Cutting edges and end bits
- Half-arrow edges
- Ripper tips and shanks
- Plow bolts and nuts

ESP WILL REPLACE ALL G.E.T. FREE OF CHARGE, SHOULD
BREAKAGE OCCUR DURING NORMAL OPERATION.

BENEFIT FROM OUR 9 MONTHS WARRANTY PERIOD ON NEW PARTS

ESP Johannesburg
Tel: (011) 398-1700

ESP Benoni
Tel: (011) 845-2911

ESP Pretoria
Tel: (012) 804-6706

ESP Middelburg
Tel: (013) 246-2520

ESP Pinetown
Tel: (031) 705-4200

ESP Cape Town
Tel: (021) 945-1030

ESP Port Elizabeth
Tel: (041) 484-4575

ESP Bloemfontein
Tel: (051) 432-4501

ESP Kimberley
Tel: (053) 831-8349



ISO 9001 Certified

Manufacturers' names, numbers, symbols and descriptions are used for reference purposes only and it is not implied that any part listed is the product of the manufacturers.

www.espa.co.za

ESP THE PROVEN ALTERNATIVE



TGW

ESP offers a wide range of TGW brand blades manufactured from several grades of high carbon and boron steel that are heat-treated and hardened to improve the lifespan and to meet the industrial requirements of earthmoving application.



BENEFIT FROM OUR 9 MONTHS WARRANTY PERIOD ON NEW PARTS

ESP Johannesburg
Tel: (011) 398-1700

ESP Benoni
Tel: (011) 845-2911

ESP Pretoria
Tel: (012) 804-6706

ESP Middelburg
Tel: (013) 246-2520

ESP Pinetown
Tel: (031) 705-4200

ESP Cape Town
Tel: (021) 945-1030

ESP Port Elizabeth
Tel: (041) 484-4575

ESP Bloemfontein
Tel: (051) 432-4501

ESP Kimberley
Tel: (053) 831-8349



ISO 9001 Certified

Manufacturers' names, numbers, symbols and descriptions are used for reference purposes only and it is not implied that any part listed is the product of the manufacturers.

www.espa.co.za

ESP THE PROVEN ALTERNATIVE

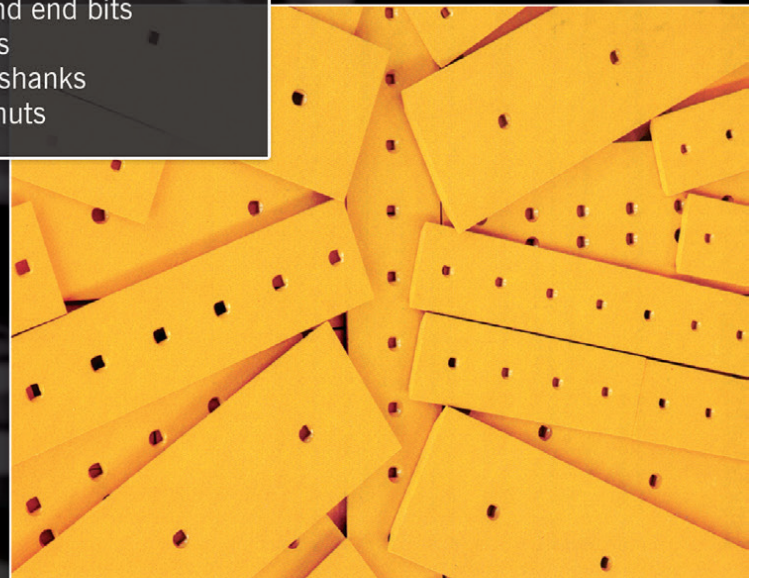
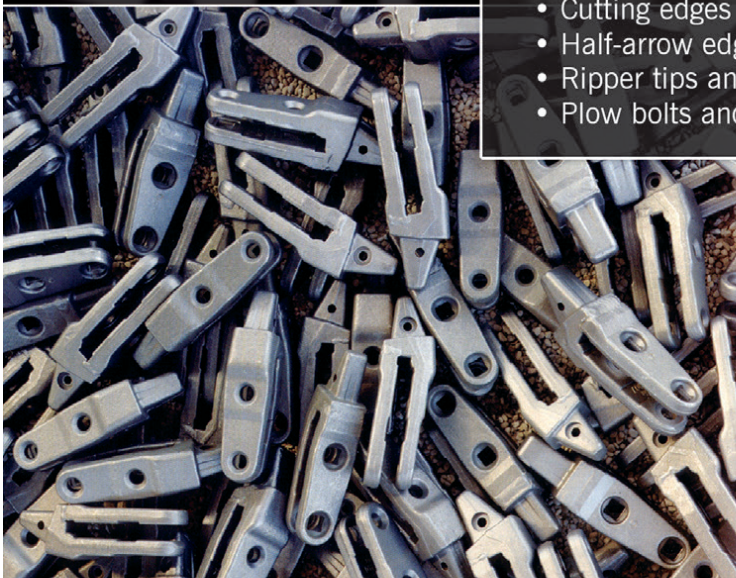


GROUND ENGAGING TOOLS FOR EARTHMOVING EQUIPMENT



These include the following parts:

- Forged and cast bucket tips
- Forged and cast bucket adapters
- Grader blades
- Cutting edges and end bits
- Half-arrow edges
- Ripper tips and shanks
- Plow bolts and nuts



BENEFIT FROM OUR 9 MONTHS WARRANTY PERIOD ON NEW PARTS

ESP Johannesburg
Tel: (011) 398-1700

ESP Benoni
Tel: (011) 845-2911

ESP Pretoria
Tel: (012) 804-6706

ESP Middelburg
Tel: (013) 246-2520

ESP Pinetown
Tel: (031) 705-4200

ESP Cape Town
Tel: (021) 945-1030

ESP Port Elizabeth
Tel: (041) 484-4575

ESP Bloemfontein
Tel: (051) 432-4501

ESP Kimberley
Tel: (053) 831-8349



ISO 9001 Certified

Manufacturers' names, numbers, symbols and descriptions are used for reference purposes only and it is not implied that any part listed is the product of the manufacturers.

NOW AVAILABLE FROM



**INTERSTATE
McBEE**



CEP
Capital Equipment Parts

**REMANUFACTURED
INJECTORS FOR**

**CAT[®] 3500
SERIES ENGINES**

100% BRAND NEW NOZZLES

- ◆ FOR PEAK PERFORMANCE
- ◆ LOWER EMISSIONS
- ◆ BETTER FUEL ECONOMY

TRIM FILE CD INCLUDED

- ◆ FOR BALANCED INJECTORS
- ◆ FINE-TUNED ENGINE

Capital Equipment Parts

Tel: +27 11 568 4215

www.capiparts.co.za

Email: info@capiparts.co.za



Interstate-McBee

Tel: 216-881-0015

www.interstate-mcbee.com

sales@interstate-mcbee.com




©Cat is a registered trademark of Caterpillar, Inc. and does not imply that the item/s above are a product of said manufacturer.

CEP
Capital Equipment Parts

Your Best source for
affordable genuine OEM surplus,
OES and aftermarket replacement
CAT® and **CATERPILLAR®** parts.



 **Euroricambi**

 **INTERSTATE-McBEE**

**BBBEE
LEVEL
2**

Mining Machine Parts Specialists

PARTS YOU CAN TRUST

TRUST

011 568 4215 | info@capiparts.co.za

www.capiparts.co.za


BLACK CAT
WEAR PARTS

 **SEARS
SEATING**
WORK HARD. WORK COMFORTABLY.

 **Euroricambi**

 **INTERSTATE-McBEE**


BLACK CAT
WEAR PARTS

 **MODENA
PARTS**



SPM Engineering Services cc

east coast gears

Specialising in earthmoving power transmission rebuilds of:

- Front end loaders
- Final drives
- Drop boxes (transfer case)
- Differentials etc.

MANUFACTURE OF ALL GEARS AND REPAIRS



REPAIR CARRIER HOUSINGS/ HUBS

Tel: 031 701 3500 | Cell: 083 383 4943 | Fax/Email: 086 224 3982
Email: eastcoastgears@gmail.com | 24 Henwood Road, Pinetown, KZN



The seat CONNECTION

Established 1991

011 452 6802
www.seatconnection.co.za
info@seatconnection.co.za
102 8th Avenue, Edenvale, 1609

New seats

Rebuilds

Repairs



ISRI 3000/350



GAMEVIEW



ISRI 6860/870 NTS



AIR SUSPENSION

ISRI ISIRINGHAUSEN

Quality service, the secret to our success.



AmPlant.co.za

SPECIALISED PLANT HIRE



Asphalt Equipment / Earthmoving Equipment
Milling Machines / Recyclers etc

Contact - Eddie Simpson
Office : 015 293 1221 ext 304 / Cell : 082 904 7694
Email : simpsons@amplant.co.za

Quality used plant for sale

Ruspert cc t/a

RUSPET EXHAUSTS

We Muffle the Industry



MANUFACTURERS OF EARTHMOVING, TRUCK & GENSET EXHAUSTS



WE HAVE MOVED TO NEW PREMISES

TEL: 011 827 2824
011 827 2826
FAX: 011 827 2850

NO.3 DEKEMA ROAD
284 DEKEMA ROAD
WADEVILLE



TRADINGINTERNATIONAL

www.bmhplant.com

082 780 0084 | 021 903 2667

bradley@bmhtradinginternational.com



2013 HITACHI ZX470 LCR-5G
12 600 HRS



2011 HITACHI ZX670 LCR-3
20 000 HRS



2017 ZX 870 LCR-5G
16 500 HRS



2013 HITACHI ZX330LC-5G
7 000 HRS



2013 Hitachi ZX210W-3
6 700 HRS



2017 KUBOTA U50-5
300 HRS



2018 HAMMER CH 400 METAL SHEAR
8 - 12 TON MACHINE



2020 HAMMER CONCRETE PULVERIZOR
22 - 30 TON MACHINE



2020 HAMMER FX 2200
22 - 30 TON MACHINE

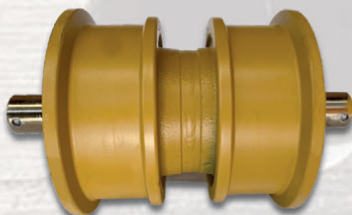


**ON THE RIGHT
TRACK WITH**

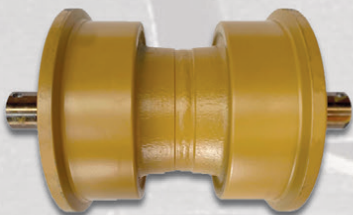
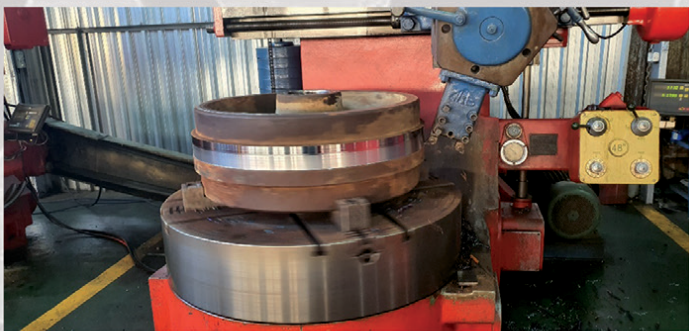
CENTRAX
Since 1974
www.centraxsa.com

Head Office: Tel: (011) 392 5055 / (011) 392 5056 / Fax: (011) 392 3091
Durban Branch: Tel: 086 123 6872 / Fax: 086 529 4683 / Steve: 083 613 0664

EXPERIENCE THE CENTRAX WORLD CLASS CONVERSION & REBUILD PROCESS
YOUR ONE STOP UNDERCARRIAGE SHOP



**DOUBLE FLANGE
ROLLERS**



**SINGLE FLANGE
ROLLERS**



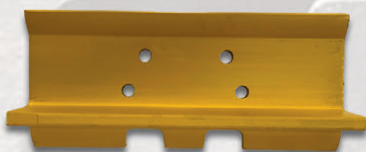
IDLERS



LINK ASSEMBLY'S



SPROCKET SEGMENT



GROUSER SHOE



SPROCKET

“LET’S DO THIS”

Manufacturers names, numbers and descriptions are used for reference purposes only & is not implied that any parts listed is the product of these manufacturers.



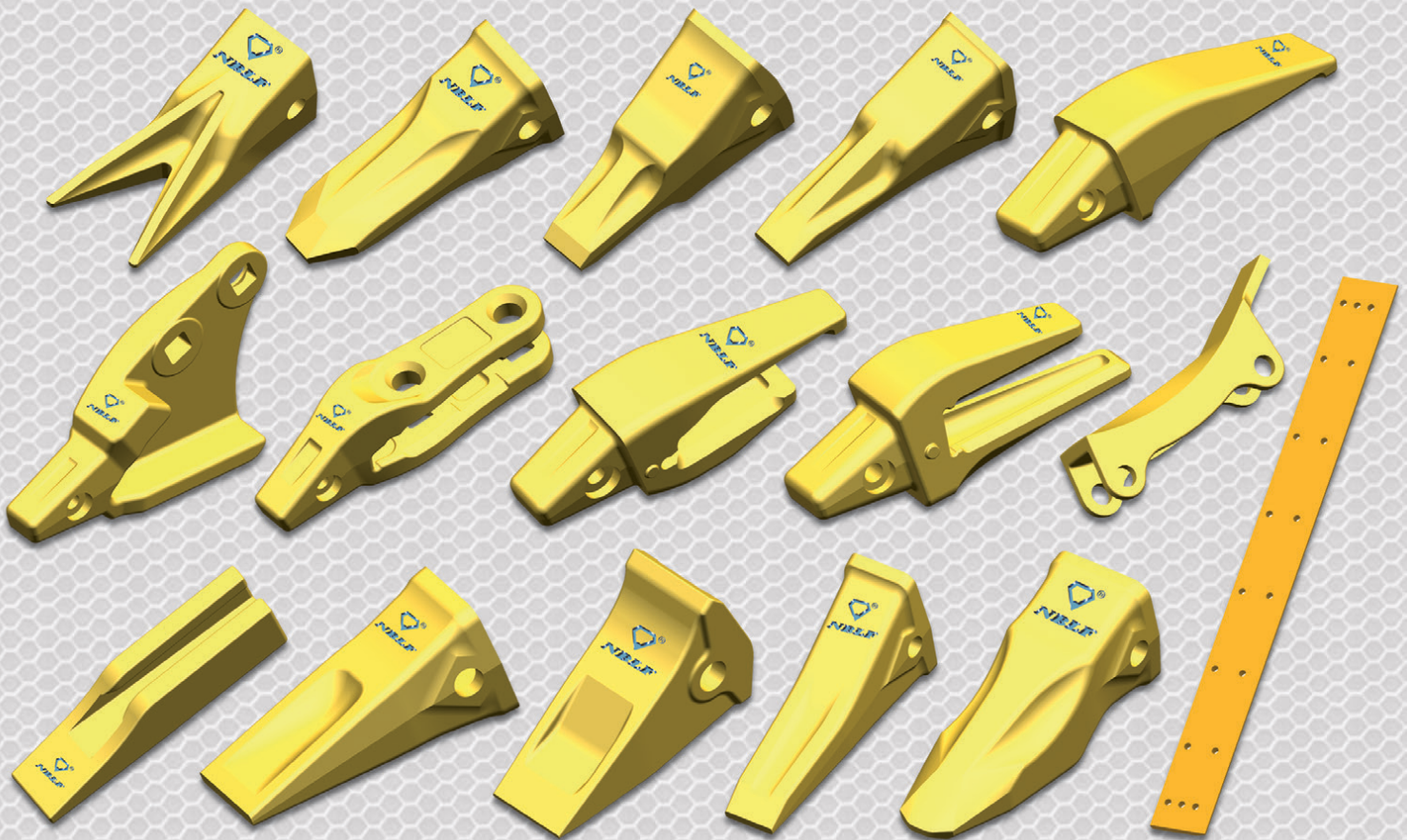
**ON THE RIGHT
TRACK WITH**

CEN TRAX
Since 1974
www.centraxsa.com

Head Office: Tel: (011) 392 5055 / (011) 392 5056 / Fax: (011) 392 3091
Durban Branch: Tel: 086 123 6872 / Fax: 086 529 4683 / **Steve:** 083 613 0664

EXPERTS IN UNDERCARRIAGE & WEAR PARTS

OUR TEAM OF TRAINED EXPERTS WILL KEEP YOUR EQUIPMENT ON TRACK



Centrax is the premier importer of world class Undercarriage and Ground engaging tools for your earthmoving construction and mining machines.

We have been supplying these parts for just under 50 years, throughout the South African continent, south of the equator. We are proud to say, that we cover parts from the smallest 2 ton machines, to the big ton units. We stock products suitable for the following makes of machines - **Caterpillar, Komatsu, Hitachi, Liebherr**, as well as the various smaller brands from original machine suppliers.

You name it - we have it at an overall 98% availability EX STOCK from our Southern African warehouses in Johannesburg and our branches and agents throughout the region .

You can contact us via E mail ,Telephone, Whats App, Fax, Skype... and we will gladly assist with stock as well as technical information to keep your machinery at peak production capability .

Manufacturers names, numbers and descriptions are used for reference purposes only & is not implied that any parts listed is the product of these manufacturers.

S. MICHELL THE PLANT FINDER CC
CELEBRATING 25 YEARS IN THE INDUSTRY
18.08.1995 TO 18.08.2020



S. MICHELL,
THE PLANT FINDER CC
The RIGHT EQUIPMENT at the RIGHT PRICE

RELIABLE EARTH MOVING EQUIPMENT

The Plant Finder specializes in the purchasing of used equipment for stock. Clients include local and national companies, hire, transportation and construction industries as well as municipalities and farmers.

The Plant Finder even undertakes the importing and exporting of equipment to satisfy the client's requirements. Our company ethos is not just to meet the client's requirements and expectations but to exceed them, and this is achieved by fostering a personal working relationship between the client and ourselves.

If we are unable to assist you with anything, we will refer you to someone who can.

We are also Dealer Approved with most financial institutions.

SHAWN MICHELL 082 568 4033
shawn@plantfinder.co.za / www.plantfinder.co.za
TEL: 041-379 1717 / FAX: 041-379 4753



S. MICHELL,
THE PLANT FINDER CC
The RIGHT EQUIPMENT at the RIGHT PRICE

USED PLANT AVAILABLE



**1X USED KOMATSU PC200-8MO
TRACKED EXCAVATOR**

S/NO: C14118
 YEAR: 2014
 SMR: 7752 HOURS



**2X USED HIDROMEK HMK62SS
MINI-TLB'S**

YEAR: 2018 / SMR: 865,1335 HRS
 FULLY ENCLOSED CABS WITH
 AIR-CON. AUXILIARY HYDRAULICS
 FITTED TO FRONT & REAR.
 MULTI-PURPOSE LOADER BUCKET.



**1X USED JCB 3CX
SITEMASTER**

SERIAL NO: 2108117 / YEAR: 2013
 SMR: +- 5080 HOURS
 AUXILIARY HYDRAULICS FITTED
 TO BACKHOE.



**1X USED JCB 406
FEL**

SERIAL NO: 2318993
 YEAR: 2015 / SMR: 2850 HOURS
 QUICK HITCH, BUCKET &
 PALLET FORKS.
 KOHLER ENGINE.



**1X USED ATLAS WEYCOR
AR60 FEL**

YEAR: 2017 / SMR: 2268 HOURS
 QUICK HITCH, BUCKET &
 PALLET FORKS.
 AUXILIARY HYDRAULICS



**1X USED CAT 226B2
SKIDSTEER LOADER**

SERIAL NO: MJH15131
 YEAR: 2010 / SMR: 5650
 QUICK HITCH, BUCKET &
 PALLET FORKS.

SHAWN MICHELL 082 568 4033

shawn@plantfinder.co.za / www.plantfinder.co.za

TEL: 041-379 1717 / FAX: 041-379 4753



TGS

A Part of ► Torre Industries

General Enquiries : info@tags.co.za
TGS Accounts : debtors@tags.co.za
Tel : +27 10 001 9200

GET THE BEST DEALS ON YOUR EQUIPMENT PARTS



WWW.TAGS.CO.ZA



**WATER PUMP
3522077**



TGS – YOUR FIRST CHOICE

**GOVERNOR
CONTROL MOTOR
2475212**



**COMPLETE LINER KITS
1290358LK**



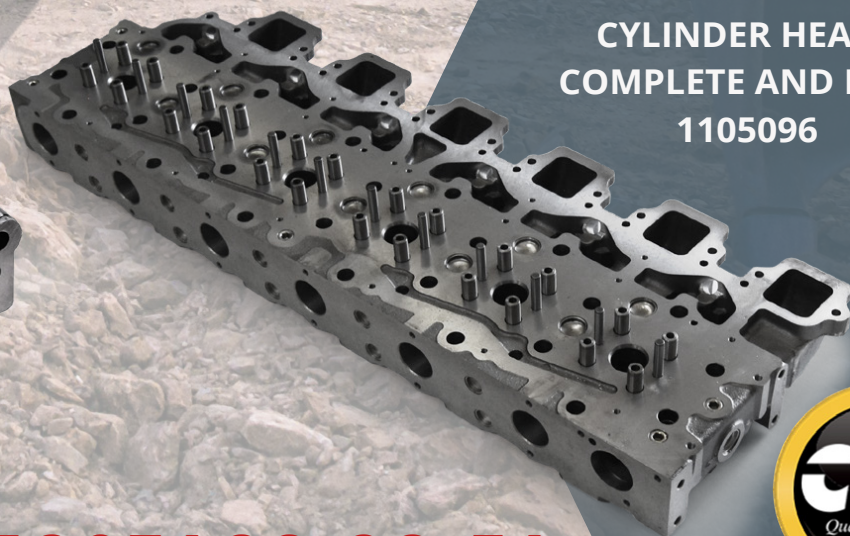
**LAMP GROUP-
FLOOD 9X1439**



**VALVE GROUP
MODULATION
2443114**



**CYLINDER HEADS
COMPLETE AND BARE
1105096**



INFO@TAGS.CO.ZA

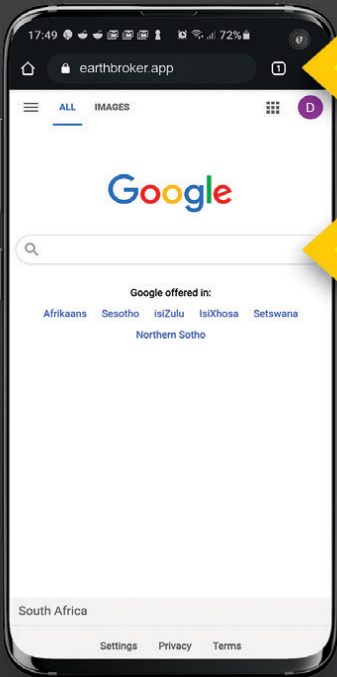


earthbroker^{publication}

Earthbroker has launched an app allowing you access to our Quick reference & our digital magazine! See below on how you can download it or use the link: <https://earthbroker.app>

How to download our app

FREE FOR ADVERTISERS | APP FOR MOBILE USE ONLY



✓ Enter 'earthbroker.app' here

1 Open Google / Safari on your mobile phone.

✗ Not in search

Access to our **Quick Reference** and our latest eMag at a push of a button
FREE DOWNLOAD

2 Follow prompts to add to home screen and allow notifications if you would like.

Now follow the instructions below on how to use our app once you have saved a shortcut on the home screen.



STEP 1

Click the shortcut once the app has downloaded



STEP 2

Choose A - Z or Category Listing



STEP 3

From here you can call the company directly, email and get directions

For info on how to advertise and get your company listed please contact Janine - 083 456 4027



MANUFACTURERS, SUPPLIERS AND STOCKISTS OF:

**CUTTING EDGES | MOLD BOARD LINERS | GRADE BLADES
TIPS AND ADAPTORS | RIPPER SHANKS | END BITS**

WE MANUFACTURE, SUPPLY AND STOCK G.E.T. FOR:

**CAT | KOMATSU | VOLVO | HITACHI | BELL | LIEBHERR | JCB | CASE
TEREX | FURUKAWA | LIUGONG | SANY | SANYO | SHANTUI | FIAT**

WEARPACT ALSO OFFERS A SPECIALIST BUCKET REPAIR SERVICE

WEARPACT

☎ 011 421 4705 / 011 845 3234 / 011 845 3272

☎ 011 421 8761

✉ mwwrp@mweb.co.za

*MANUFACTURER'S NAMES, NUMBERS & DESCRIPTIONS ARE USED FOR REFERENCE PURPOSES ONLY. IT IS NOT IMPLIED THAT ANY PART LISTED IS THE PRODUCT OF THE MANUFACTURERS.

www.wearpact.co.za



EXPERIENCE COMPETITIVE COMPETENT



TJB Earthmoving Parts & Buying (Pty) Ltd

Over the years we have identified markets in the mining and earthmoving sectors that lack transparency and that are monopolized by the larger suppliers/manufacturers that set the bar when it comes to pricing. TJB made it our core function to source suppliers that are hungry for business and that offer the "hands-on" service that we pride ourselves in.

With great confidence, TJB are proud to say that we have partnered up with the best suppliers we could find in the various services we offer that will certainly treat us and our clients as family and that will offer the service and pricing that allows you, our clients, to perform at your best without having to worry about inflated costs.

"We want to grow with you"

| MACHINE/MAKE/MODEL | PART DESCRIPTION | PART NUMBER | PRICE EX VAT | CONDITION |
|------------------------|-----------------------------------|--------------|--------------|--|
| KOMATSU HD785-7 | FINAL DRIVE BEARING | 561-22-62990 | R 85 000,00 | NEW |
| KOMATSU HD785-7 | FINAL DRIVE BEARING | 561-22-72961 | R 105 000,00 | NEW |
| KOMATSU D375A-6/170E-5 | EGR COOLER | 6245-61-7100 | R 38 000,00 | NEW |
| KOMATSU WA480-6 125E-5 | TURBO | 6506-21-5010 | R 75 000,00 | REMAN |
| KOMATSU WD600-3 | PPC LEVER VALVE | 702-16-42005 | R 40 000,00 | NEW |
| KOMATSU WA430-6 | TRANSMISSION CONTROLLER | 7823-36-2005 | R 50 000,00 | NEW |
| KOMATSU D375A-6 | TRANSMISSION CONTROLLER | 7830-14-4003 | R 45 000,00 | NEW |
| KOMATSU WB93R-5 | CROWN WHEEL & PINION GEAR SET | CA0068346 | R 19 500,00 | NEW |
| CAT 365 | REMAN BOOM CYLINDER | | R 75 000,00 | NEW |
| CAT 3208 | TRACTOR APPLICATION | | R 50 000,00 | ENGINE GOOD USED RUNNER |
| CAT | C11 ENGINE | | R 250 000,00 | BRAND NEW |
| CAT | C6.6 X 2 - WAS USED FOR A W/PUMP | | R 160 000,00 | GOOD RUNNERS 1000HRS AND 4000HRS |
| CAT | C2.2 - UNDER GROUND SPEC | | R 50 000,00 | BRAND NEW |
| CAT | C27 - D10T APPLICATION | | R 785 000,00 | REMAN, DYNO, 6 MONTHS 1000HRS WARRANTY |
| CAT | C27 - LONG SUB GOOD USED | | R 300 000,00 | GOOD USED |
| CAT | 3304DI - GRADER APPLICATION | | R 150 000,00 | REMAN, DYNO, 6 MONTHS 1000HRS WARRANTY |
| CAT | C18 - EXCAVATOR APPLICATION | | R 700 000,00 | REMAN, DYNO, 6 MONTHS 1000HRS WARRANTY |
| CAT | 3306DI | | R 175 000,00 | REMAN, DYNO, 6 MONTHS 1000HRS WARRANTY |
| SANDVIK | RADIATORS | | PLEASE CALL | VARIOUS , BRAND NEW, PLEASE CALL FOR DETAILS |
| SANDVIK | DIFFS | | PLEASE CALL | VARIOUS , BRAND NEW, PLEASE CALL FOR DETAILS |
| SANDVIK | PUMPS | | PLEASE CALL | VARIOUS , BRAND NEW, PLEASE CALL FOR DETAILS |
| SANDVIK | STARTS | | PLEASE CALL | VARIOUS , BRAND NEW, PLEASE CALL FOR DETAILS |
| CAT 992D | COMPLETE REAR AXLE | | R 150 000,00 | USED OFF A RUNNING MACHINE |
| CAT 992D | COMPLETE FRONT AXLE | | R 150 000,00 | USED OFF A RUNNING MACHINE |
| CAT 992D | ALL CYLINDERS - LIFT AND STEERING | | R 150 000,00 | USED OFF A RUNNING MACHINE |
| CAT 992D | 3412 ENGINE 9000HRS | | R 225 000,00 | USED OFF A RUNNING MACHINE |
| CAT 992D | TRANSMISSION | | R 225 000,00 | USED OFF A RUNNING MACHINE |
| CAT 992D | TORQUE CONVERTER | | R 120 000,00 | USED OFF A RUNNING MACHINE |
| CAT 992D | COOLER PACK | | R 100 000,00 | USED OFF A RUNNING MACHINE |
| KOMATSU | WD600-2 STRIPPING MACHINE | | PLEASE CALL | ENGINE AND TYRES ALREADY SOLD |
| KOMATSU | HM300-1 OR -2 F/DRIVES LH & RH | | R 150 000,00 | OEM REMAN - PRICE IS FOR EACH NOT BOTH |
| KOMATSU | PC2000-8 TRAVEL MOTOR | | R 150 000,00 | OEM REMAN |
| BELL B40D | STRIPPING MACHINE | | PLEASE CALL | VARIOUS , BRAND NEW, PLEASE CALL FOR DETAILS |



www.LNE-AgriEarth.com

 @LNEAgriEarth

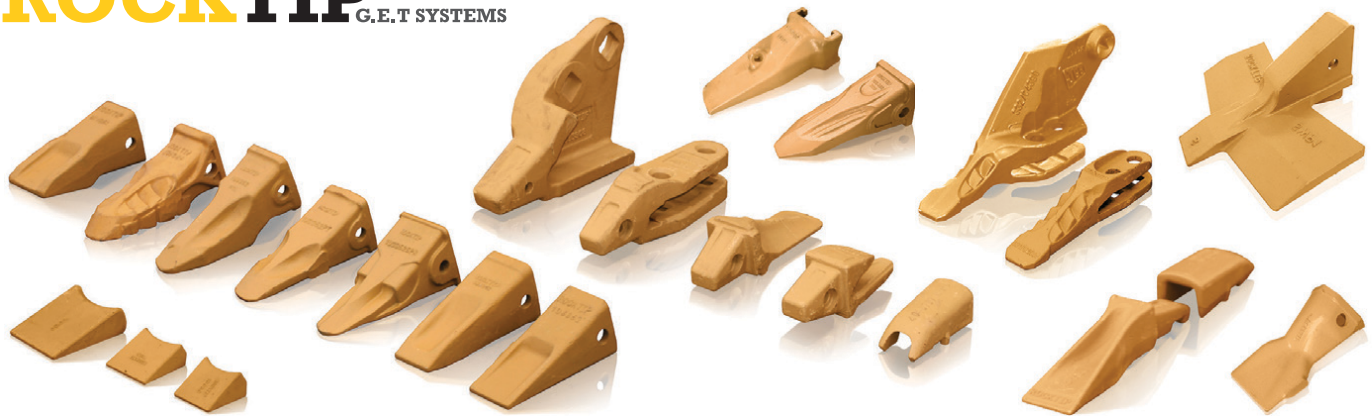




SPEC-CAST WEAR PARTS
Trusted to deliver

Spec-Cast Wear Parts (PTY) Ltd is a leading manufacturer specializing in the supply of ground engaging tools, undercarriage, undercarriage components, track frames, suspension group replacement parts, agricultural wear parts, general castings and forgings for the construction, mining and agricultural industries.

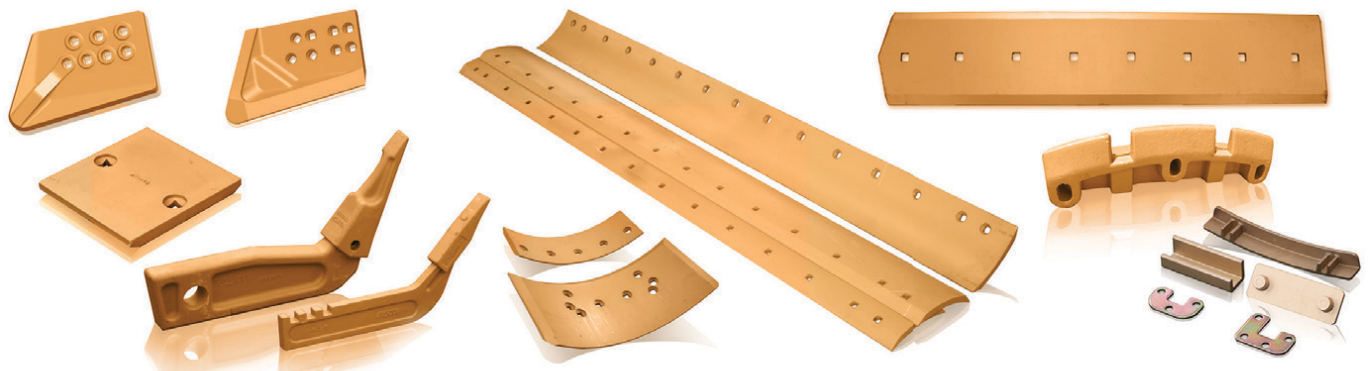
ROCKTIP G.E.T SYSTEMS



Teeth and Adapters for Various Models



Wear Protection



Blades, Cutting Edges, End Bits and Grader Wear Parts

Manufacturers of G.E.T to fit:

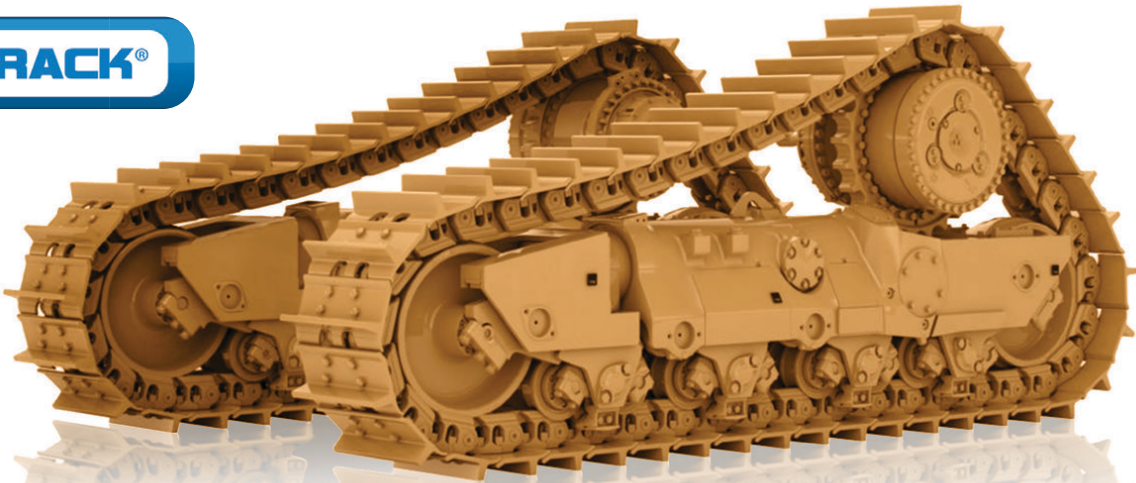
| | | | | | |
|-------------|-----------------|---------|----------|---------|--------|
| CATERPILLAR | TEREX | ESCO | LIEBHERR | H & L | BOBCAT |
| KOMATSU | JCB | HYUNDAI | DAEWOO | BUCYRUS | MTG |
| NEW HOLLAND | MASSEY FERGUSON | CASE | BOFOR | LIUGONG | KUBOTA |

Manufacturer's names, numbers, symbols and descriptions are used for reference purposes only and it is not implied that any part listed above is the product of the manufacturers.

Spec-Cast offers a wide range of undercarriage components covering the entire range of modern crawler machine applications in the construction, mining, utility, forestry, road, building, and agricultural industries. Covering all makes and models of machines, from drilling machines to hydraulic excavators, as well as dozers, auxiliary machines, conveyors and customised solutions.



SPEC-CAST WEAR PARTS
Trusted to deliver



Spec-Cast Wear Parts is an authorized Dealer for ITM and VEMATrack undercarriage parts.
Call our undercarriage experts today!



Chains



Rollers



Sprockets



Idlers



Shoes



Rubber Tracks

| CATERPILLAR | HITACHI | KOMATSU | LIEBHERR |
|------------------|-------------|---------|----------|
| 6018 RH90 | EX1200 | PC1250 | R9100 |
| 6030 RH120E | EX1800/1900 | PC2000 | R9150 |
| 6040/50 | EX2500/2600 | PC3000 | R9250 |
| RH170/200 | EX3500/3600 | PC4000 | R9350 |
| 6060 - RH340 | EX5500/5600 | PC5500 | R9400 |
| 7495 - 495HR11 | EX8000 | D375 | R995 |
| D8, D9, 10 & D11 | | D475 | R996 |
| | | | R9800 |

Our track workshop is available to support all your undercarriage needs

Turning of Pins & Bushes
Remove/Fit Track Shoes

Re-Build Idlers
Re-Shell Rollers

Re-Strip Grouser Shoes
Re-Rim Sprockets

With branches and distributors located in prime areas throughout South Africa, as well as several African countries, Spec-Cast is able to provide the Earthmoving, Mining and Agricultural industries with an efficient, cost effective supply and distribution network.

JHB HEAD OFFICE

+27 11 396 1717/13
aimee@spec-cast.co.za
11 Elgin Street, Pomona,
Kempston Park, Johannesburg

www.spec-cast.co.za

MIDDELBURG
+27 13 813 1413
middelburg@spec-cast.co.za
6 Jaspis Street
Middelburg, Mpumalanga

NORTHERN CAPE
+27 53 010 1304
northerncape@spec-cast.co.za
Section C3, Portion of Farm Waterraad
Kathu, Northern Cape

Follow us:





NDUNA SPARES

YOUR ANSWER TO ALL
EARTH MOVING EQUIPMENT & SPARES

WE SPECIALIZE IN 320/330/374 & 390 COMPONENTS & SPARES
SERVICE EXCHANGE & OUTRIGHT

KOMATSU CYLINDERS | CAT CYLINDERS | VOLVO CYLINDERS | BELL CYLINDERS
WE KEEP STOCK ON A WIDE VARIETY OF G.E.T & BUCKETS
374/390/966/TLB/EC700/HITACHI 870



**CAT 740B
TRANSMISSIONS
TRANSFER BOX
FINAL DRIVES
STRUDS
HOIST PUMPS
BRAKE PUMPS
AND MANY MORE**

**BELL B40D
TRANSMISSIONS
CONTROLLERS
DIFFS
TRANSFER BOX**

**EC210 FINAL DRIVES
PC 300 FINAL DRIVES**

WE ALSO DO PLANT HIRE



FOR A QUOTE PLEASE CONTACT US ON 013 230 3852 / 071 352 6572



**OR COME & VISIT US AT
337 BERGSEING STREET,
STEELPOORT**

**ONE OF OUR FRIENDLY
CONSULTANTS
WILL BE HAPPY TO
ASSIST YOU**

YOUR EARTHMOVING COMPONENT SPECIALIST



Ladis : +27 78 162 5250
ladislas.l@pandrearthmoving.com

Kyle : +27 83 602 5430
kyle@prearthmoving.com

Conrad : +27 79 525 0882
conrad@prearthmoving.com

Scott : +27 72 565 4920
scott@prearthmoving.com

No. 170 - 3rd Avenue, Bredell
Kempton Park, 1619. South Africa

ATTACHMENTS • AXLES • BREAK GROUPS • CYLINDERS • ENGINES • FINAL DRIVES • G.E.T.



CAT 740B
STRIPPING FOR SPARES



CAT 980H
RUNNING MACHINE



CAT D11R
RUNNING MACHINE



KOMATSU HM400
RUNNING MACHINE



KOMATSU GD825
RUNNING MACHINE



KOMATSU 475-5
RUNNING MACHINE



KOMATSU WA800
STRIPPING FOR SPARES



SLEW DRIVES



D10 TRANSMISSION
2 X AVAILABLE



C9
ENGINE



C27 D10T
ENGINE



CAT D10T
FINAL DRIVE



KOMATSU 785-5
REAR AXEL



KOMATSU WA600
STRIPPING FOR SPARES

HYDRAULIC PUMPS • NEW PARTS • POWERTRAINS • TRANSMISSIONS • UNDERCARRIAGE

YOUR EARTHMOVING COMPONENT SPECIALIST www.prearthmoving.com



Marsay Equipment specialises in the buying, refurbishment and selling of good used construction, mining, stone crushing and transport equipment.

We operate throughout southern Africa, mainly the SADC region.
We are based in Johannesburg South Africa and have been in business for 44 years.

TIM MARSAY +27 83 654 4248
PATRICK MARSAY +27 79 187 7937

tim@marsayequip.co.za
www.marsay.co.za

20 - 30T P/H CRUSHING PLANT



DO YOU NEED AN ACCURATE MARKET VALUE OF YOUR USED EQUIPMENT?

Marsay Equipment has been involved in the marketing of used equipment throughout southern Africa for the past 44 years.

We constantly keep our finger on the pulse of trends and movements in the used equipment market - especially in the field of stone crushing, earthmoving, mining and construction equipment.

We pride ourselves in the fact that we are in a position to accurately value this equipment in the prevailing market conditions. The market has rarely been as volatile as it is now due to the Covid-19 situation. If you have good used machinery that you are not using at present it could be worth more than you think either as a sale or as collateral with a financing institution. We have undertaken major valuations for numerous large construction and transport companies in Southern Africa for the last 26 years or so and our valuations have been accepted in banking, auditing, legal and industrial circles.

If you would like further information or an estimate on the cost of a valuation exercise, please complete the form on our website - www.marsay.co.za or call **Tim Marsay** on **083 654 4248**

- Loading bin, belt feeder
- Osborn (Telsmith 14x24)
- Hadfields 24 x 7 Granulator
- About 6 conveyors
- 2 x double deck screens

ALL cables and switchgear stolen
You can more or less work out the layout of the plant from the

Located about
200km from Cape Town



RAMM Parts
adriaan@rammparts.co.za
marc@rammparts.co.za

Adriaan 076 127 2977
 Marc 072 530 7373
 Rodney 073 103 9582

We are buying used machines, running and non running.



Hitachi 670-3 Stripping for spares



2006 Bell L2106D For sale, 12000 hours,
 5 cube coal bucket included in price
 R 550 000,00 + VAT



Kawasaki Z90-2 for sale
 R480 000,00 +VAT



Komatsu HM400 stripping for spares



Chieftain 1700 Powerscreen
 Complete Rebuild in progress
 For more info contact us



Sumitomo SH300 stripping for spares



Komatsu A375-5 stripping for spares



Kawasaki 85 Z5 stripping for spares



Volvo A35E stripping for spares



Buckets for sale , kawasaki Z85(new),
 Hitachi 870, Volvo, Doosan



Volvo A35D stripping for spares



Volvo BL71 TLB stripping for spares

158 Watermeyer Street, Witbank

Earthmoving Specialist

Old & New
Generation Experience



WE SPECIALIZE IN CUMMINS ENGINES

Full Diagnostic
Troubleshooting

**REPAIRS, SPARES
& MAINTENANCE TO
LEADING EARTHMOVING
MACHINERY**

Carlos Caroto: 079 519 6769 | Email: jennycaroto@live.co.za

Earthmoving Specialist



**OLD & NEW
GENERATION EXPERIENCE**



FULL DIAGNOSTIC TROUBLESHOOTING

**REPAIRS, SPARES & MAINTENANCE TO
LEADING EARTHMOVING MACHINERY**

**SPECIALISING IN: CAT ECPC, ICM COUNTERSHIFT
& POWERSHIFT TRANSMISSION REBUILDING**

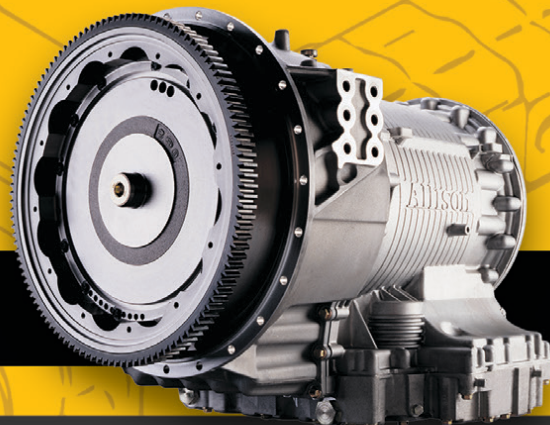
Carlos Caroto: 079 519 6769 | Email: jennycaroto@live.co.za



MZANTSI TRANSMISSIONS

6 Van der Bijl Street, Alrode South, Alberton

**We offer specialised transmission repairs
for heavy duty & on highway machines**



**WE PURCHASE
2ND HAND TRANSMISSIONS**

**WE OFFER SPECIALISED TRANSMISSION REPAIRS
FOR HEAVY DUTY & ON HIGHWAY MACHINES**

**BELL • TEREX • CAT • JOHN DEERE
HITACHI • DAEWOO • ZF • ALLISON • CLARK • FUNK**

We offer dyno testing on the following boxes:

**ZF - 4WG92, 4WG94, 4/6WG180/200/210/310
Allison - MD3560, HD4560**

**Bell B17B, B20B, B25B, 1206 & B40D
Transmissions in stock**

Email: info@gearboxes.me | **Tel:** 011 868 5130 | **Fax:** 086 634 7904 | **Cell:** 071 684 5784



Grind Right Engineering & Services (Pty) Ltd



Grind Right Site

9 Newton Street
Middelburg
1050
Tel: 066-108 7439

Grind Right Engineering & Services

16 Watt Street
Middelburg, 1050
Tel: 013-246 2308

www.grindright.co.za grindright@gmail.com

Grind Right Engineering was established in 2005. We are situated in Middelburg, Mpumalanga and specialises in Precision Machining, CNC Machining, Fabrication & Site Installation, Core Drilling.

On-site Line Boring as well as the manufacturing and re-conditioning of: # Ferrous and Non-Ferrous Bushes and Liners, # Rolls, wheels and shafts, # Hardened rolls, wheels and shafts, # Buckets, sticks & booms, # Hardened pins and bushes for all Earthmoving Equipment. Site crews available for Turn Key Projects, Maintenance, Erectionsm Fabrications, Specialised Welding and Surveys

We provide the best engineering services to mining, construction and plant groups. We do newly build / repairs and relining on all earthmoving blades, bowls, undercarriage and track frames.

Upon all that we also assist with condition monitoring on the wear of all liner packs.



AFFORDABLE ✓ **RELIABLE** ✓ **TRUSTED** ✓

WWW.DURASALES.CO.ZA



Visit our website on www.durasales.co.za for the updated stock. T&C APPLY

JHB SHOWROOM:
46 Viewpoint Road
Bartlett, Boksburg

CPT SHOWROOM:
30 Kiat Street
Kraaifontein, WC.

Visit our showrooms in:

Gauteng: +27 (0) 11 918 4760
Western Cape: +27 (0) 21 988 6618
North West: +27 (0) 82 443 6646
KwaZulu Natal: +27 (0) 31 705 1770

JHB SALES TEAM:

Prinsloo: +27 71 611 7281
JP: +27 66 160 5505
Coenie: +27 83 251 8046
Jerry: +27 82 895 5611
Curtis: +27 82 359 9199
Ernest: +27 79 874 5458

CPT SALES TEAM:

Pottie: +27 83 600 0729
Gerrie: +27 82 950 7040

DURA EQUIPMENT SALES

AFFORDABLE  **RELIABLE**  **TRUSTED** 

WWW.DURASALES.CO.ZA




 2018 KAMAZ B65222 6X6
36000KM




 2011 CAT 966H
15350 HOURS




 2011 CAT D8R
10000 HOURS



 2012 CAT 336D
7604 HOURS



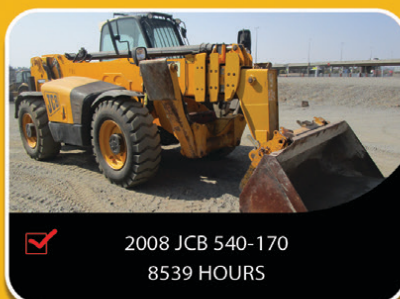
 2012 CAT 320D
9110 HOURS




 2007 KOMATSU D65E-12
11300 HOURS



 2008 CAT 428E
5012 HOURS



 2008 JCB 540-170
8539 HOURS



 2009 CAT CS533E
2795 HOURS



 NEW LOVOL FL966-II
FULL WARRANTY



 NEW LOVOL FL956H
3.0 CUBE BUCKET



 NEW LOVOL FL936H
2.0 CUBE BUCKET

Visit our website on www.durasales.co.za for the updated stock. T&C APPLY

JHB SHOWROOM
46 Viewpoint Road
Bartlett, Boksburg

CPT SHOWROOM
30 Klaat Street
Kraaifontein, WC

Visit our showrooms in:

Gauteng: +27 (0) 11 918 4760
Western Cape: +27 (0) 21 988 6618
North West: +27 (0) 82 443 6646
KwaZulu Natal: +27 (0) 31 705 1770

JHB SALES TEAM:

Prinsloo: +27 71 611 7281
JP: +27 66 160 5505
Coenie: +27 83 251 8046
Jerry: +27 82 895 5611
Curtis: +27 82 359 9199
Ernest: +27 79 874 5458

CPT SALES TEAM:

Pottie: +27 83 600 0729
Gerrie: +27 82 950 7040



We are stripping earthmoving
equipment for spares.

GRADERS



CAT 140 G/H
CAT 16 G
BELL 872 D

ROLLERS



STA VV 900
BW 211 D-3
BW 212 D-2
BW 212 D-2A

DUMPERS



BELL B17 B
BELL B20 B/C/D
BELL B35 D
KOMATSU HM 400-1
CAT 740

EXCAVATORS



SUMITOMO SH 200-1/3
SUMITOMO SH 450-3
CAT 320 LME
CAT 324
CAT 330 B
CAT 375 L
CAT 385-B/C
KOMATSU PC 220-6
KOMATSU PC 200-7
KOMATSU PC 300-7
BELL KATO H 820-11
BELL KATO HD 1023

WHEEL LOADERS



CAT 924 G
CAT 962 G
FURUKAWA FL170/230/330
KOMATSU WA 120-3
KOMATSU WA 250-3/5
KOMATSU WA 280-3
KOMATSU WA 320-3
KOMATSU WA 470-5
KAWASAKI Z85-IV
KAWASAKI Z 90-IV

DOZERS



KOMATSU D 65-8
KOMATSU D 85-18/21
KOMATSU D 275-2/5
KOMATSU D 375-2/3/5

Contact us on: Magda: +27 (0) 72 056 3341

email: admin@duraparts.co.za
WWW.DURASALES.CO.ZA

Repairs to all OFF and ON Highway Transmissions, Torque Convertors, Gearboxes, Differentials and Power Take Off's



VORTEX
TRANSMISSIONS

Tel: 011 452-4430/1
Parts: 011 452 3296 / 452 3390
Johan: 082 333 1005
Jan: 082 333 1004
Fax: 011 609 5302
Email: vortex3@mweb.co.za



Allison Fuller • Clark • Caterpillar • Funk Twin Disk



SERVICE UNITS:

- AT 545 bell (spec)
- MT 643 bell (spec)
- MD 3560 P TID 2
- MD 3560 P TID 3
- MD 3060 TID 3
- 4500 ORS GEN 4
- 4500 ORS R GEN 4 LIFE FILTER Bell B40D
- 4500 ORS R GEN 4 Bell B50E
- Terex engine PTO 'S TR 60
- Euclid and Terex transmission PTO'S
- Euclid 6610A CEC2
- Terex 6610AR CEC 2
- Euclid 6620A

UNITS THAT WE ALSO DO:

- Bell grader transmissions
- Cat transmissions
- Funk transmissions
- Terex & Euclid Differential center portions
- Bell differential center portion
- Chelsea PTO'S
- Terex engine PTO'S TR 100

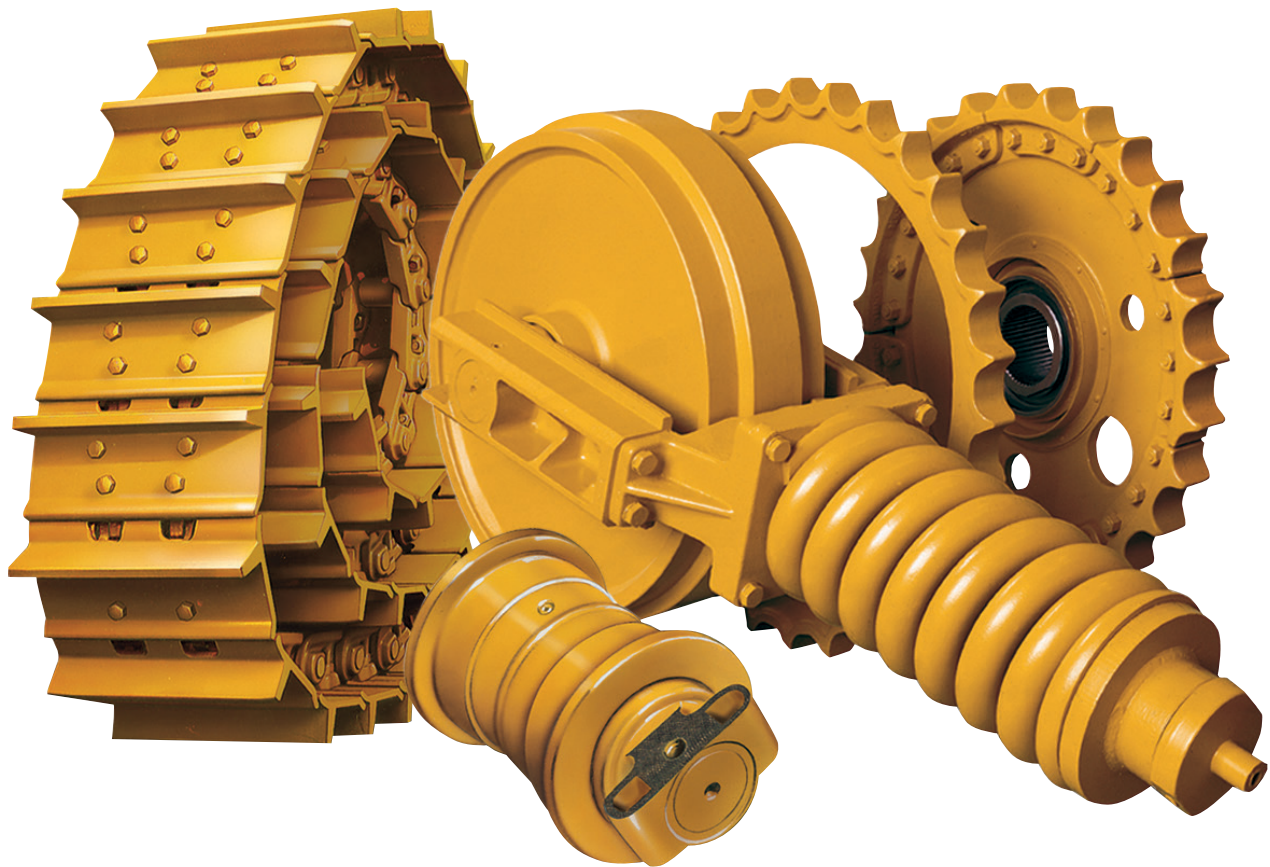


Vortex Transmissions sell genuine Allison parts for all our transmissions Dyno testing is done in house and all transmissions that are tested have test reports



www.blumaq.com

Follow us on:



Following our success as **Berco** product distributor in Zambia, Blumaq South Africa has now also been appointed a distributor for this quality product in South Africa.

Blumaq South Africa now also offers **Berco quality undercarriage parts and repairs** from our operation based in Wadeville, Johannesburg.

Our fully serviced Track Undercarriage workshops offers a full service including Turning of Pins & Bushes / Re-stripping of Grouser shoes / Track Link repairs / Idler and Roller rebuilds / Track Frame Rebuilds.

Contact us today for a free on site wear assessment of your undercarriage components.

Contact:
+27 11 966 5092 **Johannesburg**
+26 096 0923 962 **Kitwe**
john.beukes@blumaq.com

Berco dealer in Spain, Zambia, Turkey and South Africa:



Caterpillar®, komatsu®, cummins®, volvo® and case® are trade brands registered by their owners and are only used for reference purpose of the application of our spare parts.



www.blumaq.com

Follow us on:



Spare parts suitable for VOLVO

We offer a wide range of items
with immediate delivery for your
VOLVO earthmoving equipment.



Alternative spare parts for Caterpillar

We offer a wide range of items
with immediate delivery for your
CATERPILLAR earthmoving equipment.



**Berco dealer in
Spain, Zambia,
Turkey and
South Africa:**



Contact:

+27 11 966 5092 **Johannesburg**

+26 096 0923 962 **Kitwe**

john.beukes@blumaq.com

Caterpillar®, komatsu®, cummins®, volvo® and case® are trade brands registered by their owners and are only used for reference purpose of the application of our spare parts.

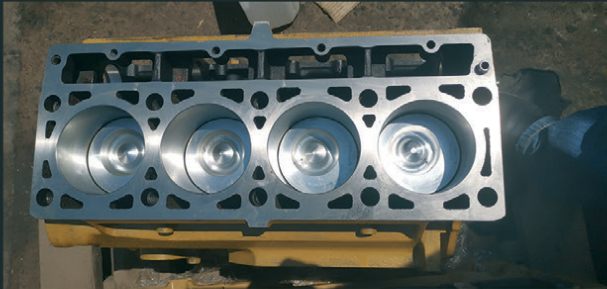
Branches in Spain: Alicante | Almería | Asturias | Barcelona | Galicia | Madrid | Mérida | Ponferrada | Sevilla | Tenerife | Zaragoza
Branches in the world: Chile | United States | France | Portugal | Turkey | China | Russia | Italy | Romania | South Africa | Zambia | Peru

GOOD USED EARTHMOVING PARTS AND EQUIPMENT

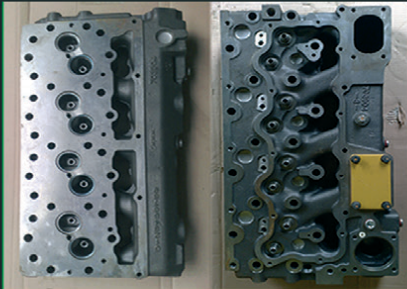


Tel: (011)894-6192 / (011)894-3377
Fax: (011)894 7914
barney@stmmining.co.za
donovan@stmmining.co.za

Office Hrs: Mon-Fri 07h00-17h00



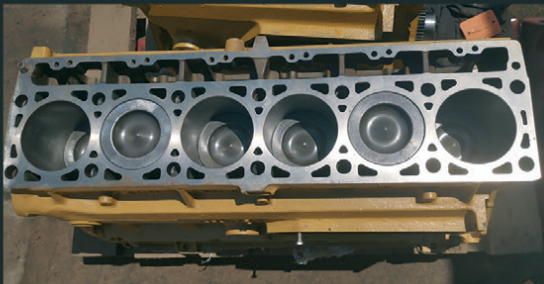
3114DI RECON SUB



HEADS TESTED & RECONDITIONED
3304 / 3306 / 3204 / 3116 / 3406 / 3412 / C9 / C13



REMAN SUB FROM CAT C9



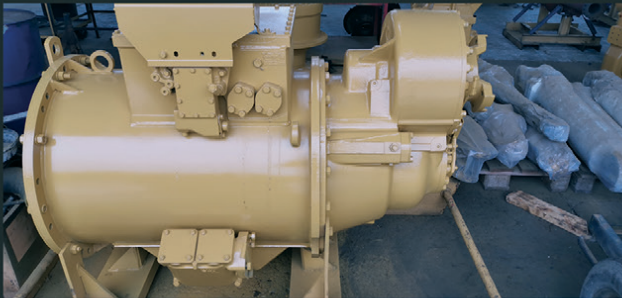
RECON 3126DI SUB



REMAN 3126 HEADS



D10T RECON
SERVICE EXCHANGE FINAL DRIVES



RECON 789C TRANSMISSION



CAT 140G TRANSMISSION
RECON SERVICE EXCHANGE



CAT 140G DIFF
RECON SERVICE EXCHANGE



D11R
FINAL DRIVE



988F-2 RECON
S/EXCHANGE T/CONVERTER



3412DI
REMAN SUB



D9T RECON FINAL DRIVE
SERVICE EXCHANGE

**STRIPPED
ENGINES**

3304/6
3204
3126
3406
3408
3412
3508
3512
3516

C6.4
C7
C9
C11
C13
C15
C18
C27
C32

MACHINES

EXCAVATORS

225
317B
318B
320B
325B
330B
320D
323D
330D

LOADERS

920
930
936G
938G
950A/H
966G
980F/G
988B

www.stmmining.co.za



MACHINES FOR SALE



LIEBHERR 538 LOADER
2013 MODEL
(AUTOMATIC GREASING
SYSTEM AND L5 TYRES)
R 425 000 + VAT



**LIEBHERR R914B
EXCAVATOR 24 TON**
2004 MODEL (NEW LINK
ASSEMBLYS AND GROUSER SHOES)
R 150 000 + VAT



BELL B20C DUMPER
(Not Registered)
R 420 000 + VAT



**MERCEDES-BENZ 2628
TIPPER TRUCK**
MODEL 407 SERIES
R 120 000 + VAT



**MERCEDES-BENZ 2628
TIPPER TRUCK**
MODEL V SERIES
(ROADWORTHY CERTIFICATES)
R 200 000 + VAT



CONTACT

Francois Gerber

082 454 0934 | charlesjnr@transand.net | 044 695 0105



Hennie Nelson
South Africa, Witbank
+27 82 414 1393
sales@inmine.co.za



VARIETY OF
CATERPILLAR & HITACHI ENGINES



CAT 16H GRADER ENGINE
RUNNER



CATERPILLAR 777 / 785
D11 TORQUE CONVERTERS



CAT 785 RECONDITIONED
& USED FINAL DRIVE



RECONDITIONED
CAT 773 DIFF

WWW.INMIME.COM

Plot 26 Naauwpoort, Benicon Park, Witbank 1036
Mpumalanga, South Africa

CAT 773F Stripping for parts



Available parts:

| | |
|------------------|--------------------------|
| 2 x Final drives | All suspension cylinders |
| 1 x Diff | 1 x Radiator pack |
| 1 x Transmission | |

CAT 773F Bowl



Stripping 2 x Cat 992G



**PLEASE ENQUIRE FOR
INFORMATION ON
AVAILABLE PARTS**

CAT 789C Used Engine



SET / RECONDITIONED CAT 6030 FACE SHOVEL CYLINDERS



**RH120 / RH200
& RH340 Sprockets**



**2 x Boom Lift Cylinders / 2 x Stick Cylinders
2 x Bucket Tilt Cylinders**



**RH120E Reconditioned
Cylinders**



**INMINE have a full operational workshop, that does all work inhouse
from Idler rebuilds to Grouser shoe restripping.**



All Africa Supplies

GLOBAL REACH - LOCAL SUPPLY

www.allafricasupplies.net

011 918 9976

Enquiries: sales@allafricasupplies.net

228 All Black Road Anderbolt Boksburg



*All manufacturers names, numbers, symbols and pictures are for reference only. It does not imply that any of the parts are the product of these manufacturers.

PLANT FOR SALE

KOMATSU PC450



R1 100 000 ex vat

VOLVO G720



R950 000 ex vat

BELL B25D



R350 000 ex vat

PARTS & COMPONENTS



HYDRAULIC CENTRE



FIELD SERVICE



REMAN CENTRE





**AUTHORIZED
PARTS DISTRIBUTOR**

Follow us on Social Media

- Facebook / All Africa Supplies
- Google+
- Instagram / @allafricasupplies

www.allafricasupplies.net

VENDEL EQUIPMENT SALES (PTY) LTD | T/A ASSOCIATED EQUIPMENT

P O Box 3716, Honeydew, 2040
Telephone: +27 (11) 801 4911/2
Reg. no: 2013/000179/07
associated1@xnet.co.za

JAAP +27 (0)82 892 1327
ANTON +27 (0)82 923 5397
CHRIS +27 (0)83 626 5588
LORAIN +27 (0)76 021 4344

Plot 92 Indaba Lane-off Beyers Naude,
Rietfontein, Rodepoort 2040
Fax: +27 (11) 801 4914
associatedloraine@xnet.co.za



WE ARE BUYERS FOR YOUR REDUNDANT EQUIPMENT



1 x Dynapac CS142N
3 Point Steel Drum Roller
1 x Bomag B212D-3 PD Roller
1 x Bomag 212 Smooth drum Roller



1 x Ingersoll-Rand 27Ton PT Roller
1 x Cat PF-300C PTR's - 2009
3 x Benford TV1200 DDV Rollers
1 x Bomag BW120AD-4 DDVR - 2006



5 x Caterpillar 140G
Motor Graders with Rippers Refurbished
1 x Caterpillar 120G Motor Grader



1 x Caterpillar 140H Motor Grader
1 x Komatsu GD650 Grader



2 x Kamax 65222-63-9 Tipper Trucks
2018 Demo Models
1 x Terex T30 6x6 Dump truck - 2004



1 x Cat 938K FEL's 2013
2 x Cat 950H FEL's 2013 Models
1 x Cat 980H FEL - 2014 Model
2 x Sem 668C FEL - 2014 Models



1 x Cat 938K FEL's 2013
2 x Cat 950H FEL's 2013 Models
1 x Cat 980H FEL - 2014 Model
2 x Sem 668C FEL - 2014 Models



2 x Caterpillar 320D Excavator
2014 - 2010 Models
1 x Caterpillar 323D Excavator - 2007
1 x Cat 302.5C Excavator 2010



1 x Caterpillar D6T Dozer
with Ripper and aircon 2010 Model
1 x Caterpillar D8R Dozer with Ripper 2011 Model



1 x Bell 2306D 4x4 Tow Tractor -2004 Mode
1 x Merc 2629K Diesel Tanker 8000LT



2x AWE Double Axle Lighting Towers
2009 / 2008 models
1 x Lighting plant on Trailer



NEW TYRE'S
17.5x25 Rock Grip L4, 23.5x25 L3,
17.5x25 L3, 20.5x25 L3 26.5x25 L3
23.1x26 (Rollers) 12.5x80x18 16.9x28



1 x Komatsu PC200-8 Excavator 2013
1 x Komatsu PC200-8 Excavator 2012
1 x Komatsu PC 220-8 Excavator -2011



1 x Doosan DX62R-3
Excavator Piping for Hammer 2016
1 x Cat 302.5C RT
Piped for Hammer Excavator 2010



4 X Etnyre K Chip Spreader's
1 x Grid Rollers Refurbished
1 x 5 Sided impact roller



2 x Hamm 3520 - 20 Ton SD Rollers
2011 / 2010 Models
1 x Caterpillar CB434D SD Roller



1 x Caterpillar RM 300 Reclaimer
2010 Model - ONLY 4045 HRS



1 x Broce Broom's
1 x Spinnekop Broom



2 x New / Unused Case 770EX
Magnum 4x4 TLB's - 2020 Models



6 x Komatsu HM4010-3R A.D.T's
4 x Bell B40D 6x6 A.D.T's

GPS CO-ORDINATES: **S26°3'56.343 - E37°52'37.453**

www.associatedequipment.co.za / www.vendelequipmentsales.co.za



AFRICA'S LEADING EARTHMOWING EQUIPMENT & PARTS DEALER

www.blcplant.com ☎ +27 11 555 2000 ✉ info@blcplant.com

PLANT

PARTS

RENTAL



**OVER 600
MACHINES
IN STOCK**



HYDRAULIC EXCAVATORS

CAT 320D, 325D, 329D, 330D, 336D, 345D,
349D, 365C, 374D/F, 385C, 390D/F



DOZERS

CAT D6R, D6T, D7R, D8R, D9R/T, D10T, D11T



RIGID DUMP TRUCKS

25 X CAT 777D, 5 X 777F



MOTOR GRADERS

CAT 140G, 140H, 140K, 14H, 16G, 120H, 14M,
16H, 16M



ARTICULATED TRUCKS

BELL B40D, B35D



ARTICULATED TRUCKS

CAT 725, 730, 740, 740B, 745C



VOLVO ARTICULATED DUMP TRUCK

A40F



KOMATSU EXCAVATOR

PC600



FRONT END LOADER

CAT 992 K



TRACTOR LOADER BACKHOES

CAT 428F, 428F2, 426F, 450E



COMPACTION ROLLERS

BOMAG BW212-3, BW213D, BW219-3
CAT CS533, CP 533E, CS563E, CS76



FRONT END LOADERS

CAT 950H, 950GC, 966H, 962H, 972H,
980H, 988G, 992K

**LARGEST STOCK OF
PARTS IN THE
SOUTHERN HEMISPHERE**

Service exchange units available.

6 MONTHS WARRANTY
on refurbished components.

View all our available
stock on our website
www.blcplant.com



BLC Plant purchases earthmoving equipment for stock, rebuilds it as required in the fully equipped on-site workshops and then sells it to users in various industries. We focus on delivering products which meet customer specifications, offer buyers a viable alternative to new equipment and provide excellent after sales service and support.

PLANT

PLANT – STOCK READY TO GO



CAT 277D SKID STEER



TADANO TR250M-6 RT CRANE



DOOSAN EXCAVATOR



**KOMATSU
HM400 35000L WATER BOWSER**



120T LOW BED



CAT 120H MOTOR GRADER



CAT 966L FRONT END LOADER



CAT 140M MOTOR GRADER

TRUCKS – STOCK READY TO GO



MERCEDES 3331 ROCK BIN



MERCEDES 3331 HEAVY DUTY BIN



MAN 26-280 10M3 TIPPER NEW



TATA 2528 10M3



MERCEDES 3335 10M3



NISSAN UD 330D 16000L WATER



MERCEDES 2628 CRANE 12 TON METER



MERCEDES 3340 CRANE 15 TON METER

Call us now **+27 (0)11 555 2000** or visit **www.blcplant.com** for our latest stock.



Largest stock of parts in the southern hemisphere. Service exchange units available. **6 Months warranty on refurbished components.**

www.blcplant.com

+27 11 555 2000

info@blcplant.com

Corner Wynberg Road and 2nd Avenue, Kew

PARTS

STRIPPED OVER 3000 CAT MACHINES FOR STOCK



CATERPILLAR
Dozer Engines



CATERPILLAR
Dozer Final Drives



CATERPILLAR
Grader Transmissions



CATERPILLAR
Loader Axles



CATERPILLAR
Loader Transmissions



CATERPILLAR
Grader Axles



CATERPILLAR
Transfer Box



CATERPILLAR
Off Highway Transmissions

Call us now +27 (0)11 555 2000 or visit www.blcplant.com for our latest stock.



KDH

HYDRAULICS

Tel: (011)762-9001/2
 Fax: 0867581303
 Mobile A/H: 071 678 3746
 Email: ricus@kdhhydraulics.co.za

Cnr Quellerie St & Randfontein Rd, Roodepoort, Johannesburg, Gauteng



EXCHANGE UNITS

KAWASAKI

K3V 280 DT
 K3V 180 DT
 K3V 112 DT
 K3V 280 SH

REXROTH

A10V60
 A20V60
 A10V74
 A10V71



LIEBHERR – A4VG71

VARIOUS VOLVO ADT HYDRAULIC PUMPS
VARIOUS SUNDSTRAND HYDROSTATIC PUMPS & MOTORS



Repairs on all of the following major brands

- Atlas Copco
- Bell Equipment
- Caterpillar
- Liebherr
- Doosan
- Hitachi
- Komatsu
- Sumitomo
- Kawasaki
- Sandvik
- Bobcat
- Powerscreen
- Terex
- Finlay
- Aard Mining Equipment
- GHH
- Case
- ASA-Lift
- John-Deere
- Volvo

We also supply Gear pumps and motors according to application specifications and requirements.

www.kdhhydraulics.co.za



ITR AFRICA

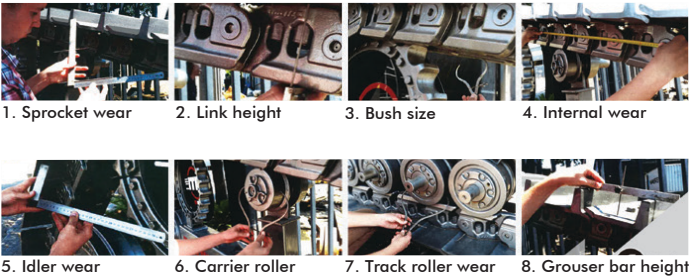
UNDERCARRIAGE MEASURING & WORKSHOPS



Undercarriage

The ITR undercarriage line includes chains, shoes, rollers, sprockets, idlers and segments manufactured within the group’s own production facilities. In addition to standard excavator and dozer applications, ITR undercarriage also covers asphalt road paving, drilling and logging machines. ITR’s flexible production and design expertise also allow for “tailor-made” products to suit any specialised application.

The ITR mini and compact undercarriage line also includes a strong selection of rubber tracks, bolt-on and clip-on rubber pads, rubber and polyutherane vulcanised shoes and city-pads (road liners).



1. Sprocket wear 2. Link height 3. Bush size 4. Internal wear
5. Idler wear 6. Carrier roller 7. Track roller wear 8. Grouser bar height

Undercarriage Measuring

ITR offers a complete undercarriage measuring service that provides a full analysis with recommendations, giving you the benefit of reducing cost per hour through preventative and scheduled maintenance.

Contact your nearest ITR branch today to schedule your appointment.

Undercarriage Workshops

ITR offers Undercarriage Repair, Maintenance and Rebuild Services out of our Service Centres in South Africa and Zambia. Services include remove and refit shoes, turn pins and bushes, re-strip grouser shoes, rebuild idlers, fit new pins and bushes and trackframe repairs.



Johannesburg
Tel: +27 (11) 614 0070
sales@itrafrica.com
Kathu
Tel: +27 (53) 723 2245
kathu@itrafrica.com

Cape Town
Tel: +27 (21) 905 7340
capetown@itrafrica.com
Pinetown
Tel: +27 (31) 941 1133
pinetown@itrafrica.com

Port Elizabeth
Tel: +27 (41) 451 2222
portelizabeth@itrafrica.com
Middelburg
Tel: +27 (13) 590 5614
middelburg@itrafrica.com

East London
Tel: +27 (43) 748 3541
eastlondon@itrafrica.com
Bloemfontein
Tel: +27 (51) 011 5620
bloemfontein@itrafrica.com

Namibia
Tel: +264 (83) 331 5160
namibia@itrafrica.com
Zambia
Tel: +260 (212) 213 867
zambia@itrafrica.com



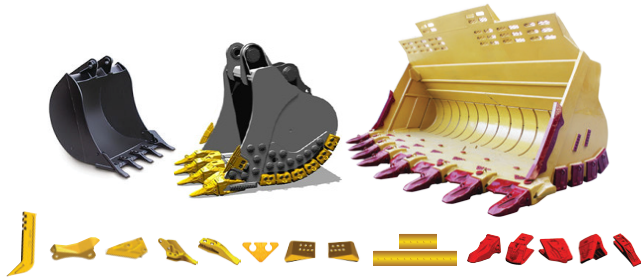
THE FIRST CHOICE EARTHMOVING SOLUTIONS PROVIDER IN SUB-SAHARAN AFRICA

www.itrafrica.com

MANUFACTURER’S NAMES, NUMBERS & DESCRIPTIONS ARE USED FOR REFERENCE PURPOSES ONLY & IT IS NOT IMPLIED THAT ANY PART LISTED IS THE PRODUCT OF THE MANUFACTURERS



GROUND ENGAGING TOOLS AND BUCKETS



The ITR GET line features on-going development of new product lines as well as high-performance, innovation-based, original solutions.

The ITR **UNIK** line has been designed for any and all applications where high penetration, impact resistance and increased wear life are essential. Unique features are an innovative and modern self-sharpening design, a reinforced pocket structure, increased side pin protection, high impact resistance and selected ITR steel composition, all ensuring excellent performance and an extended wear life.

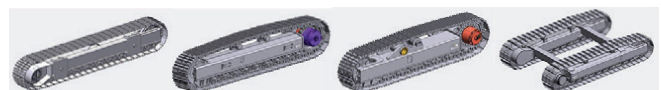
The **BYG Futura** Wear Technology Premium range is designed for mining machines up to 800 tons. The main features are its hammerless solutions that increase safety and reduce downtime, extra weight invested in reinforcing the key areas of the tooth where it has more exposure to wear, and its design with lateral and central ribs that facilitate the flow of material, significantly extending life while retaining its self-sharpening properties.

OILS AND LUBRICANTS



ITR has a range of quality lubricants that deliver superior engine protection and performance, for machines used in construction, industrial and marine sectors. ITR lubricants are formulated with highly refined base oils, extreme pressure agents, anti-wear and anti-corrosive resistance additives for smooth operation.

CRAWLER SYSTEMS AND TRACK FRAMES

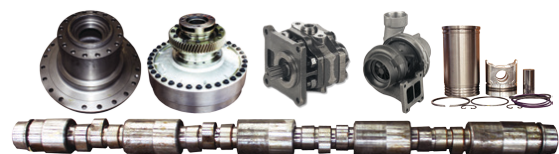


ITR offers Complete Undercarriage Crawler Track Solutions for many applications: Drill Rigs, Screen Plants, Crushing Plants, Underground Applications and more. The Crawler System is supplied complete, including Final Drives & Travel Motors.

TRACK ONE side frames are available for machines with a total weight between 500 kg and 200 tons.

These frames are typically used for crushers, drilling machines, conveyors, road pavers and milling machines.

REPAIR PARTS



ITR has developed the widest range of repair parts available on the market for earth moving machines today. Engine parts such as crankshafts, connecting rods, pistons, cylinder heads, cylinder blocks, cylinder liners, engine valves. Hydraulic parts like gear pumps, piston pumps and hydraulic steering systems. Clutch parts, cooling system parts such as radiators, oil coolers and pumps. Torque converters and their relative components. Braking system parts such as calipers, discs and air compressors. Electric parts such as engine starters, alternators, switches, sensors, batteries and worklamps. Parts for transmissions, differential systems and final drives. Chassis parts such as equalizer bars, bogies and guards.



THE FIRST CHOICE EARTHMOVING SOLUTIONS PROVIDER IN SUB-SAHARAN AFRICA

www.itrafrica.com

MANUFACTURER'S NAMES, NUMBERS & DESCRIPTIONS ARE USED FOR REFERENCE PURPOSES ONLY & IT IS NOT IMPLIED THAT ANY PART LISTED IS THE PRODUCT OF THE MANUFACTURERS



● Seals ● Bearings ● Hydraulic Components

We have moved to 504 Pretoria Road, Fairleads, Benoni

Tel: +27 11 420 1003 | Roger: +27 79 493 4486 | Damian: +27 79 897 9822

Seals:

- Earth moving cylinder kits
- Hydraulic seals
- Pneumatic seals
- Oil seal
- O rings
- D rings
- Torric/duo cone/face seals

Bearings:

- Spherical plain bearings
- Spherical roller bearings
- Deep groove ball bearings
- Thrust bearings
- Taper roller bearing
- Needle bearings

Plastic engineering:

- Custom seal manufacturing
- Valve seats
- Bellows
- PTFE balls
- Pressure pads
- Sheeve wheels
- Rail slides

Brands we stock:



TRELLEBORG



SAKAGAMI

Brands we stock:

TIMKEN

FAG

NTN

SKF

Plastics we stock/machine:

- Nylon
- PTFE
- Bronze impregnated PTFE
- Carbon impregnated PTFE
- Glass impregnated PTFE
- Tufnol
- Polyurethane
- All other engineering plastics

Components/Miscellaneous:

- Pins
- Bushes
- Cylinder bolts/washers
- Hydraulic glands
- Custom pattern making
- Castings
- LED work lights
- Component remanufacturing and repair
- Torque rod bushes
- Bellows
- Custom sourcing and supply of goods

Through our network we can also offer a wide range of service exchange hydraulic cylinders

YES WE ARE OPEN

We form part of South Africa's essential services to keep our food industry and municipalities going. Keep safe and call if we can assist. 083 657 0522



GFA

Gears for Africa

WE MOVED TO BIGGER PREMISES
145 Lamp Road, Wadeville
Germiston

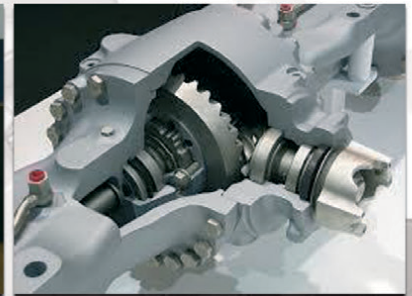
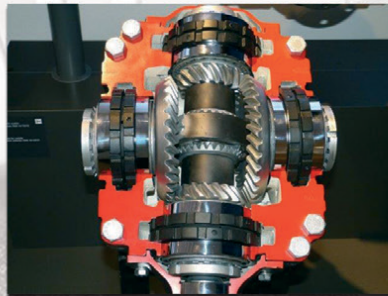
OUR QUALITY COMPARES 100 % TO ANY OEM SPARE MANUFACTURES

MANUFACTURE OF SPIRAL BEVEL GEARS NOW AVAILABLE



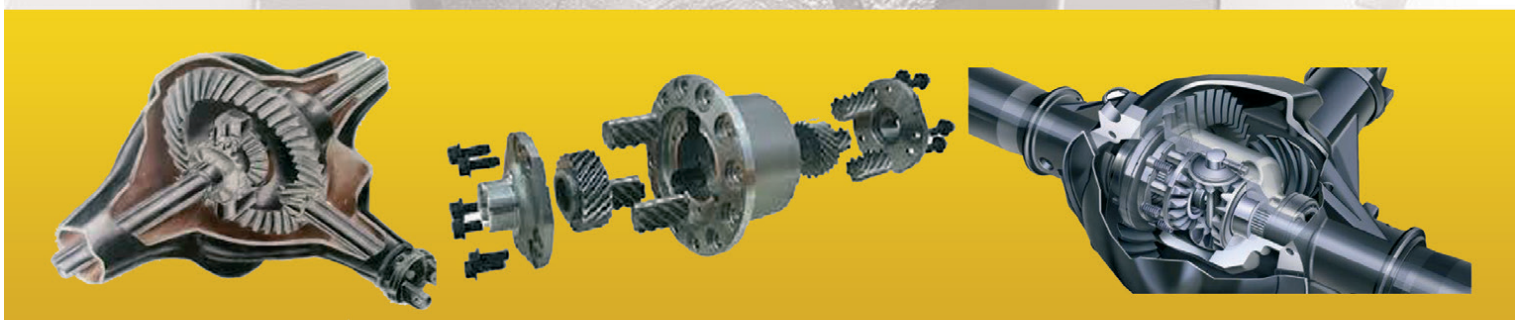
Gears for Africa products include all types of gears, sprockets, splines and related product for industrial and heavy duty equipment and practically all applications related to power drive systems:

- Bevel Gears
- Spur Gears
- Worm Gears
- Helical & Internal Helical Gears
- Crown Gears
- Internal & External Splines.



CROWN WHEEL AND PINION, PLANETARY, SUN AND RING GEARS
FINAL DRIVE GEARS, DIFF HOUSINGS SPIDER CROSS KITS, SPIRAL BEVEL GEARS

FOR THE MINING, RAIL, HEAVY EARTH MOVING, BUILDING,
AND AGRICULTURAL INDUSTRIES



Cape Town Branch
Tel: 021 577 1030
Fax: 021 577 1131

083 657 0522 | carl@gearsforafrica.co.za
www.gearsforafrica.co.za

JHB Branch
Tel: 011 824 2017
Fax: 011 420 3314



SHIN LI
TRADING ©



*We Specialise in
Japanese & Korean
Earthmoving Spares*

ENGINE SPARES

Liner Kits, Gasket Kits, Valves & Guides,
Water Pumps, Oil Pumps, Crank & Cam Shafts,
Engine Bearings & Bushings



Mitsubishi
Komatsu
Doosan
Nissan
Isuzu
Hino

HYDRAULIC PARTS

Kawasaki Pumps

New and Complete



Final Drives

20 Ton Excavator
Final Drive Parts
& Complete Units



Komatsu Gear Pumps

Transmission Pumps
Steering Pumps
Main Pumps



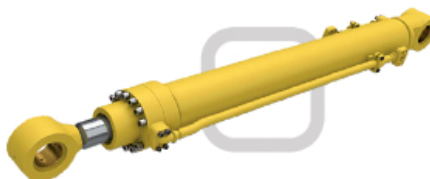
Kawasaki Rotating Groups

K3V and K5V Series
Inner Parts
Rotating Groups
Seal Kits



Komatsu Cylinders

Complete Cylinders
Seal Kits



WWW.SHINLITRADING.CO.ZA

Email:

sales@shinlitrading.co.za (Chris)
sales2@shinlitrading.co.za (Wimpie)
sales3@shinlitrading.co.za (Martin)
sales4@shinlitrading.co.za
sales5@shinlitrading.co.za (Steven)

Address:

67 High Road
Bredell A/H
Kempton Park

Tell:

011 396 1081
011 552 5900 /1/2

Fax:

086 666 2537



Working hard, so you don't have to.

WWW.SHINLITRADING.CO.ZA

UNDERCARRIAGE

Track Links



Sprockets



Idlers



Track & Carrier



Rollers

Track Plates



Bolts & Nuts

**Genuine Hyundai
20 Ton Track Frames**



FOR SALE !

Address: 67 High Road
Bredell A/H
Kempton Park
Tell: 011 396 1081
011 552 5900 /1/2
Fax: 086 666 2537

Scan the QR Code
to see our website:



**SHIN LI
TRADING** ©

BELL

RECHARGEABLE GREASE GUN

Promotional
price

R 995⁰⁰
excl. vat



- Grease Tube Assembly
- Vent Valve
- Grease Release Valve
- Relief Valve • Handle Assembly
- Battery • Fast Charger
- Flexible Hose
- Extra Battery • 12V Inverter

FOLLOW US ON



E-mail: partssales@za.bellequipment.com

www.bellequipment.com

JCB 3CX PARTS



C.T.C. PLANT COMPANY
SINCE 1992



WE BUY JCB'S

Complete engine rebuild parts, cylinder heads, crankshafts, pistons, gasket kits, transmission parts, axle and diff parts, axle hub parts, cab parts, cab glass, machine cables, hydraulic parts and pumps, pins and bushes, electrical parts & much more.

Transmissions 3 CX, Front & rear axles,
Complete service exchange hubs
Hydraulic cylinders for 3 CX

SERVICE EXCHANGE COMPONENTS:

Saving you time, saving you money,
reducing down time.

444 NT long blocks
444 T long blocks
Available.



FOR SUPERIOR QUALITY PARTS ON ALL MAJOR BRANDS

Cnr. Michigan & Manchester
Streets, Airport Industria,
Cape Town, South Africa

Mark Swanepoel: +27 82 825 6966
Roy Heather: +27 61 421 9184
www.ctcplant.com





FIELD SERVICES NOW AVAILABLE



Primeplant (Pty) Ltd
Tel: 011 979 4853 Fax: 011 396 1653
www.primeplant.co.za



We specialize in the repair & maintenance of **CAT** TLB's



POWERTRANS

THE REBUILD CENTRE

Tel: 032 459 5700 • 0861 POWERTRANS
 Ricky 071 706 8759 • Raven 082 555 4925
 info@powertrans.co.za • www.powertrans.co.za



*All manufacturers names, numbers, symbols and pictures are for reference only. It does not imply that any of the parts are the product of these manufacturers.

SAUER DANFOSS

PV27 COMPLETE PUMP AVAILABLE



ALL OTHER PV SERIES
ARE AVAILABLE ON REQUEST

BELL

Bell Logger and Caneloader Parts



CUMMINS

BRAND NEW Cummins QSB 6.7



**ARE YOU HASSLING FOR EXCAVATOR SPARES,
WE CAN HELP SOURCE PARTS FOR YOU**

LEAD TIME 4-6 WEEKS FROM PAYMENT
**WE BOAST THE BEST DYNO TEST EQUIPMENT FOR ENGINES
AND TRANSMISSIONS IN THE INDUSTRY.**

**PARTS FROM MAJOR SUPPLIERS SUITABLE FOR
DOZERS, EXCAVATORS, FRONT END LOADERS
AND ALL OTHER EARTHMOVING EQUIPMENT**

A VISIT TO OUR FACTORY IS WELCOME ANYTIME

WE ARE AUTHORISED AGENTS FOR
 (ALLISON TRANSMISSION, TELMA RETARDERS, BOSCH FUEL INJECTION , KIRLOSKR DIESEL ENGINES).



**INJECTOR PUMP AND
INJECTORS**



**WE SUPPLY BRAND NEW AIRCOOLED
ENGINES FOR BELL EQUIPMENT LOADER,
WE ALSO HAVE A LARGE INVENTORY
OF REBUILT EXCHANGED UNITS**



**REXROTH PUMP
AND EATON PUMPS**



**FULL RANGE OF ALLISON
TRANSMISSION SERVICE
EXCHANGE UNITS IN STOCK**

PARAMOUNT EQUIPMENT

We are level 1 B-BBEE company with a National Footprint and SADC reach

We are a diversified company with extended offerings in the Manufacture and Supply of Machines for the mining and related industry.

We have been trading since 2013. We offer Professional Engineering Services to industry. We strive for innovation and utilize the best material available in the market and offer the best fit solutions for our customers. Understanding our customer requirements is important. We source and provide them with best engineering solutions that are suitable for their operations. Paramount has recently partnered with the manufacturer, Revathi Equipment Limited (REL), an India based company to service the African continent. Paramount Equipment is the Authorized REL Dealer and Distributor

INTRODUCING:



**AUTONOMOUS
MINING THE
WAY FORWARD**



REL (India) designs and builds a varied range of blast hole drills for the mining and construction industry, incepted in the year 1977 as Revathi CP Equipment limited the Indian Unit of Chicago Pneumatics USA. Since its inception REL has manufactured more than 2000 drills of different capacities, delivering quality holes drilled safely and accurately at the lowest cost.

Our commitment to continuous improvement and innovation drives our ongoing and growing African presence. Please feel free to contact us for more information about our industry-leading products and services.

Your Partner in Mining Equipment Solutions

Gauteng
32 Van Buuren Road
Hans Merensky Office Park
Bedfordview, JHB
Tel: 010 007 3258

Mpumalanga
2 Watt Street
Industrial Area
Middelburg
Tel: 010 007 3109

Northern Cape
Rietbok Street, Office 5
NS&R Building, Kathu
Tel: 082 902 6376 /
072 849 6970

Botswana
Plot 454
Jwaneng
Tel: 00 27 10 007 3258 /
+267 71 968 840



Contact us today on sales@paramounttracks.com or visit us online at www.paramounttracks.com

Proud partner of:





Paramount Tracks

Bedfordview
Head Office
32 Van Buuren Rd
Hans Merensky Office Park
Tel: 010 007 3258

Middelburg
2 Watt Street • Industrial Area
Middelburg
Mpumalanga
Tel: 010 007 3109

Northern Cape
Rietbok Street • Office 5
NS&K Building • Kathu
Tel: 082 902 6376
Tel: 072 849 6970

Botswana (Pty) Ltd
Plot 454
Jwaneng
Tel: 00 27 10 007 3258
Tel: +267 71 968 840

Postal Address: South Africa
P.O.Box 11735 • Aerorand
1070 • South Africa

Postal Address: Botswana
P.O.Box 2233 • Jwaneng
Botswana



Email: sales@paramounttracks.com
Website: www.paramounttracks.com

Paramount Tracks is a diversified trading company that provides professional engineering services to the mining, plant and construction industries. We are a 100% black owned company and have presence in Johannesburg, Middelburg, Limpopo, Northern Cape and Botswana. We offer specialised services pertaining to the supply of all types of earthmoving undercarriage, GET, along with offering a repair solution for all bucket repairs, bowels, blade repairs, track frames etc.

We have the infrastructure to service large mining and construction companies. We supply a vast range of undercarriage that is suitable for all types of drill rigs and crawler equipment, along with wear parts that are suitable for most GET applications. We own a Track Workshop and Engineering Facility in Middelburg, Mpumalanga region & have developed strong relationships with the European undercarriage manufacturer ITM which is located in Italy. We currently service high end corporate clients in South Africa and have been appointed as the official ITM distributor for South Africa and Botswana through our Paramount Tracks Botswana entity. Paramount Tracks has been recognised as the official dealer of the Combi Wear Parts Ground Engaging Tools Range for South Africa who specialises in the manufacturing of this Swedish wear parts range and aims to offer our customers a premium product. We are the appointed Hardox Wearparts Centre in Middelburg, who is a member of SSAB and offer the following services:

- Cutting • Welding • Machining • Bending • Post-treatment • Perforation etc.

We aim to provide high productivity, along with low maintenance costs which is the core business for a Hardox Wearparts Centre.



THE OEM ALTERNATIVE

Our Vision

To be a regionally recognised professional engineering and technical services company dedicated to providing value added services to customers, from an engineering and supply of new undercarriage components perspective.. Paramount Tracks values are built on dedication, quality workmanship and excellent customer services that are based on sound engineering principles along with maintaining a safe and healthy working environment.

Our Mission

We undertake to uphold the following principles:
Quality parts and services
Develop and empower the community we operate within
To work to the highest quality standards possible
Shrive for continuous improvement

www.paramounttracks.com




We get it done!

TEL: +27(0)11 967 0055 | TEL:+27 (0)11 967 0060
FAX: +27(0)86 606 4597 | SALES@MIDPLANT.COM
ADDRESS: 273 3RD AVENUE, BREDELL, KEMPTON PARK
WWW.MIDPLANT.COM

Mid Plant Services

NEW & RECONDITIONED HYDRAULIC EARTHMOVING EQUIPMENT, PARTS AND REPAIRS





*All manufacturers names, numbers, symbols and pictures are for reference only. It does not imply that any of the parts are the product of these manufacturers.



NEW STOCK AVAILABLE
20 TON FINAL DRIVES
50 TON FINAL DRIVES
70 TON FINAL DRIVES

NEW STOCK AVAILABLE
HYDRAULIC COMPONENTS
HYDRAULIC INTERNAL PARTS
UNDERCARRIAGE COMPONENTS
ENGINES AND INTERNAL PARTS







STRIPPING FOR SPARES

FOR SALE
CAT424D - RUNNER
SAMSUNG SE210 -
RUNNER WITH SCRAP
GRAPPLE.
DOOSAN S55 - RUNNER
DOOSAN S225LCV
CONTACT US FOR
PRICING.

TOUGH EQUIPMENT FOR A TOUGH WORLD.



FOR ALL INTENTS AND PURPOSES IN AFRICA



South Africa Official Dealer
011 979 3636
www.burgersafrica.com

Liugong South Africa
Tel 011 979 0971
www.liugong.com



DOZER

EARTHMOVING



**CAT 789C
FOR DISMANTLING**



**CAT 777F
FOR DISMANTLING**



**CAT 777D
FOR DISMANTLING**



**CAT 773F
FOR DISMANTLING**



**CAT 773E
FOR DISMANTLING**



**CAT 773D
FOR DISMANTLING**



**CAT 769D
FOR DISMANTLING**



**CAT 769C
FOR DISMANTLING**



**CAT 725
FOR DISMANTLING**



**CAT D11R
FOR DISMANTLING**



**CAT 824G I
FOR DISMANTLING**



**CAT 824G II
FOR DISMANTLING**



**CAT 834H
FOR DISMANTLING**



**CAT 988H
FOR DISMANTLING**



**CAT 992G
FOR DISMANTLING**



**LIEBHERR 9350
FOR DISMANTLING**



**LIEBHERR 9350
FOR DISMANTLING**



**KOMATSU HD785-5
FOR DISMANTLING**



**CAT 992K FINAL DRIVE
REMAN/EXCHANGE**



**CAT D11T TRACK FRAMES
REMAN/EXCHANGE**



DOZER
EARTHMOVING
CAT D10T TRACK FRAMES
REMAN/EXCHANGE



DOZER
EARTHMOVING
LIEBHERR 9350 TRACK FRAMES
REMAN/EXCHANGE



DOZER
EARTHMOVING
LIEBHERR 9350 CAR BODY
REMAN/EXCHANGE



DOZER
EARTHMOVING
LIEBHERR 9350 BOOM
REMAN/EXCHANGE



DOZER
EARTHMOVING
LIEBHERR 9350 STICK
REMAN/EXCHANGE



DOZER
EARTHMOVING
LIEBHERR 9350 TOGGLE
REMAN/EXCHANGE



DOZER
EARTHMOVING
LIEBHERR 9350 LINK
REMAN/EXCHANGE



DOZER
EARTHMOVING
LIEBHERR 9350 IDLER
REMAN/EXCHANGE



DOZER
EARTHMOVING
LIEBHERR 9350 PUMPS
REMAN/EXCHANGE



DOZER
EARTHMOVING
LIEBHERR 9350 SWING DRIVE
REMAN/EXCHANGE



DOZER
EARTHMOVING
LIEBHERR 9350 BUCKETS



DOZER
EARTHMOVING
LIEBHERR 9350 CABIN
REMAN/EXCHANGE



DOZER
EARTHMOVING
CAT 789D/785D CABIN
REMAN/EXCHANGE



DOZER
EARTHMOVING
CAT 777F/773F CABIN
REMAN/EXCHANGE



DOZER
EARTHMOVING
CAT D11T/D10T CABIN
REMAN/EXCHANGE



DOZER
EARTHMOVING
LIEBHERR 9350
FOR SALE



DOZER
EARTHMOVING
CAT 824G I WHEEL DOZER
FOR SALE



DOZER
EARTHMOVING
CAT 824G II WHEEL DOZER
FOR SALE



DOZER
EARTHMOVING
CAT 834H
FOR SALE (IN PROCESS CURRENTLY)



DOZER
EARTHMOVING
CAT 834K WHEEL DOZER
FOR SALE

T +27(0)11 452-1224 M +27(0)11 82 441-2895 E info@dozer.co.za W www.dozer.co.za



www.instagram.com/dozerearth



www.facebook.com/dozerparts

INDUSTRIAL PLANT SOLUTIONS

For all your...



ENGINES



3306DITA Ind, 3126B Sub 938G-2,
3126-Loader, C9-D7R recon engine
on PEX, C15 Long block 980H,
3126B Sub, C7 Industrial, C7/140k,
C11 Sub, C11, C15, 3176C, 275-5,
966G/H

TRANSMISSION



D8N T.C, 926E Transmission recon,
D4D Transmission recon,
D3C Transmission recon,
930 Transmission recon,
275-5, 988F-2 Torque, D8R Torq
Conv, D5MTran, D275-5 Tran,
D8N Torq Conv, D275.5,
D8N Tran, D8T TC

FINAL DRIVES



D8R F.DRIVES & DIFF STEER
D6R/H Finaldrive, 330B Finaldrive
PC200, D5M, D6R, 320B,
SH480-5, 318C, PC200.6, D5M
SH480.5, D6R 320B

PUMPS



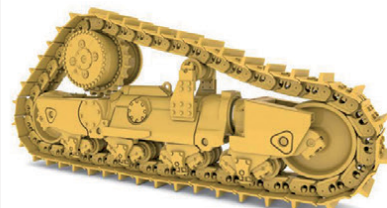
988F All pumps
D8R Str, D8N Tran
C6.4Fuel, D8N Diff
Zaxis300.3 Hydr

BUCKETS



424D, 928F, 920,
PC200-7, 330B, 320B,
320C, 320C, 320B, 928F,
330B, 966H

MISCELLANEOUS



C7 Radiator as new, C9 Crankshaft,
ISX Cylinder head recon, C7 Cylinder
head recon, 988F Bell housing/Fly
wheel, SA6D140-E-3 Block/crank,
Robex 180 Rollers, D4G & D5G cooler,
988H Diff Pinion, C13 Injectors,
Tooling, Tracks, G.E.T,
Controllers, Vacuum Pumps

New, used and reconditioned components - all makes.

If it's from your machine, we'll find a replacement!!

Contact Us:

✉ : sales@ipsglobal.net



WhatsApp Message
+27 (0)82 405 3494

Inspections & Assessments Also Done



RHINO

Excavator Hammers cc

Reg. No. 2008/152815/21

SOLE DISTRIBUTORS FOR



IN AFRICA



**Rock Wheel
Cutter**



**XCENTRIC
RIPPER**



**DandA
SILENCE 1200V**

**WE ALSO HIRE:
EXCAVATORS & TLB'S
WITH THE ABOVE
ATTACHMENTS**



RHINO

Earthmovers cc



BREAKING FOR SPARES

MACHINE & PARTS LISTING (PRICES ON APPLICATION)

- CAT 931C , CAT 330D
- VARIOUS 20 TONNE EXCAVATORS JS200, CAT320D ,CAT330D. (SOLD WITH OR WITHOUT PIPING)
- 14 000 ALUMINUM WATER TANK.

- JAW CRUSHER RUNNING ORDER
- KOMATSU PC400-6 AS A RUNNER OR FOR SPARES.
- 2 X JCB 3CX FOR SPARES.
- KOMATSU DOZER 375-5, 375-3 TRANSMISSION AND ENGINE IN GOOD CONDITION.

+27 74 922 2382 (Office Number) | Cell: 071 670 8707 | 082 887 8636
sales@rhinohammers.co.za | hire@phplant.co.za | cjago@global.co.za
www.rhinohammers.co.za | www.phplant.co.za



BOMAG BW212-3
Smooth drum Roller



1 x HYUNDAI 300LC-9S
Excavator



2 x KOMATSU D51EX-22
Dozer



BELL/KATO HD1430R
8570 Hours



LOWBED
Two axle trailer



KOMATSU WA380-6
F.E.L.



Contact Stuart McKenzie for more details:

Tel: 033 212 2181

Cell: 082 558 7901

Email: sjm@mckenzieplant.co.za

www.mckenzieplanthire.co.za



You can now find us on facebook, go to www.facebook.com/mckenzieplanthire

WEICHAI

WEICHAI & SEM PARTS



LOWEST PRICES GUARANTEED!!



FAW Q8 Oils



A Caterpillar Brand

Our new home is located at
14 Buwbes Rd, Sebenza

Afrikaans: Arno - 065 040 2839

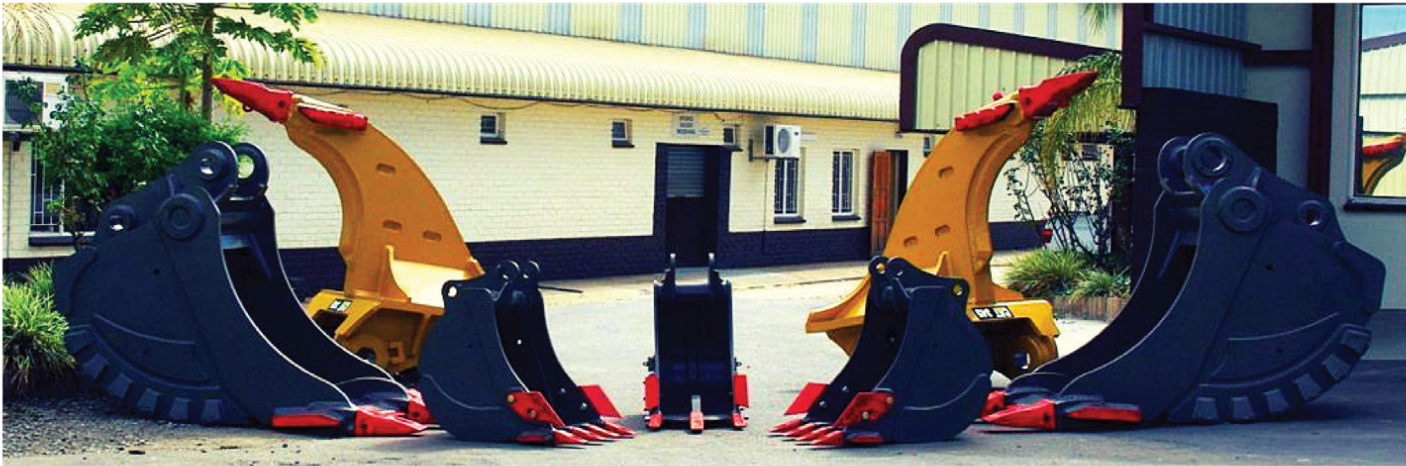
English: Barry - 072 399 9817

Zulu: Sonto - 061 564 1163

bm@semrsa.co.za



MACHINERY CONTRACTORS



Where other companies stop, Machinery Contractors only starts.



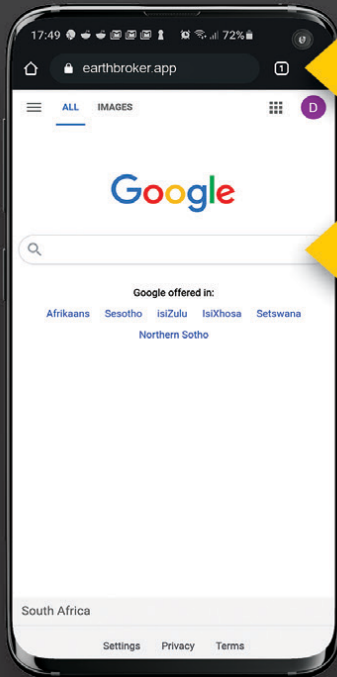
TEL: 012 250 3534 [INFO@MACHINERYCONTRACTORS.CO.ZA](mailto:info@machinerycontractors.co.za)
WWW.MACHINERYCONTRACTORS.CO.ZA

earthbroker^{publication}

Earthbroker has launched an app allowing you access to our Quick reference & our digital magazine! See below on how you can download it or use the link: <https://earthbroker.app>

How to download our app

FREE FOR ADVERTISERS | APP FOR MOBILE USE ONLY



✓ Enter 'earthbroker.app' here

1 Open Google / Safari on your mobile phone.

✗ Not in search

Access to our **Quick Reference** and our latest eMag at a push of a button

FREE DOWNLOAD

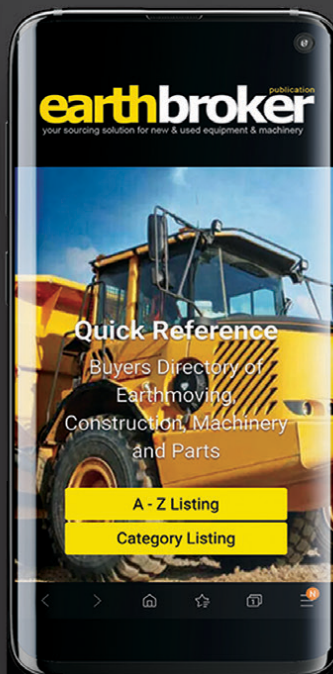
2 Follow prompts to add to home screen and allow notifications if you would like.

Now follow the instructions below on how to use our app once you have saved a shortcut on the home screen.



STEP 1

Click the shortcut once the app has downloaded



STEP 2

Choose A - Z or Category Listing



STEP 3

From here you can call the company directly, email and get directions

For info on how to advertise and get your company listed please contact Janine - 083 456 4027



YANMAR

WORLD RENOWN COMPACT EXCAVATORS

Models available from 1 to 10 tons

- Powered by Yanmar
- Built by Yanmar
- Zero Tail Swing
- Hydraulic Quick Coupler
- PTO fitted standard
- Steel or rubber tracks
- Cab or ROPS canopy
- Airconditioner option
- Cylinder protection
- Dozer blade & boom swing
- Light & travel alarm
- 15 YRS IN SOUTH AFRICA

Western Cape
FORCE 8 CC (Importers)
Phone 021 535 1117
www.force8.co.za

Gauteng
RAPTOR PLANT SALES (PTY) LTD
Phone Clive on 073 500 3761
www.raptorplantsales.co.za

Eastern Cape
CHALK AIR CC
Phone 043 743 8855
Please speak to Zane

Mpumalanga
RUDAMANS (PTY) LTD
Phone 013 753 3631
www.rudamans.co.za

West Coast
WESKUS MEGANISASIE CC
Phone 027 213 3277
Kobus 081 415 4409

Breede River Valley
LANGEBERG GRONDWERKE CC
Phone 023 626 2563
Danie 084 491 0916

www.yanmar.co.za

RHAM Equipment: Blast Hole Drill Rig (BHDR45). We know the drill!

Rham Equipment, a Level 3 B-BBEE South African, (Pty) Limited Company, has been producing specialized mining equipment since 1980. To date, Rham Equipment has supplied over 2000 units to some of the most prominent South African platinum, gold and coal mines who we count amongst our customer portfolio. The South African mining industry is well developed and prides itself on its technological development, productivity and safety, and in line with this philosophy the company has built an enviable reputation as the supplier of choice, producing products that are durable, safe and cost-effective. With 2020 marking 40 years of experience, the company has been providing the South African and international mining industry with quality products and top-of-the-range services for the past four decades. In celebration of this milestone, Rham Equipment is expanding its product range beyond the industry proven underground equipment that include load haul dumpers, transporters, excavators, dump trucks, roof bolters, to name but a few.



The all new **BHDR 45 Blast Hole Drill Rig** is the latest addition to the range of mining solutions supplied by Rham Equipment and will be a worthy adversary to the internationally dominated South African surface mining equipment sector.

This machine prioritizes key aspects of the mining sector that, now more than ever, are vital to ensure optimal productivity and operator safety.

With the mining industry in constantly seeking ways to ensure a healthy environment for their employees, improve operator safety and increase productivity, the BHDR 45 was designed with the operator in mind and comes standard with:

- Less strain on the operator during long operational shifts by including a spacious, sound proofed cabin with air conditioning and an adjustable swivel chair protecting the operator from the elements.
- An improved dust collection system to increase visibility that will improve health risks associated with dust inhalation and worker safety around the machine.
- An encapsulated drill feed system that increases the safety of operators and workers by less exposure to moving components.
- Real time machine monitoring and level 9 PDS and VDS systems that ensure workplace safety and user-friendly control interfaces.
- Simplistic modular hydraulic components that reduce the mean time to repair and increases the serviceability of the machine.
- State-of-the-art drilling operations feedback and control systems that can increase productivity and efficiency during operation.
- An operation specific dual engine power supply that reduces overall fuel consumption and decreases the emissions during normal operations.
- Industry leading advanced filtration systems to reduce the risk of contaminants and ensure an extended lifespan of critical components.

Rham Equipment set out to design one mobile and compact machine that is capable of meeting multiple ranges of drilling requirements and will be able to drill holes ranging from an impressive 140 mm – 250 mm in diameter for up to 45 m deep, trumping the hole size limitations of competing drill rigs. The BHDR 45 is specifically designed for the South African market and incorporates simplistic drilling principles with state-of-the-art controls and hydraulic components. This machine features a completely redesigned gearless hydraulic drilling and feed system, that delivers a pull-down force of more than 23 000 kg and 8 900 Nm of torque at low pressure requirements providing the machine with the power needed to conduct any drilling operation.

The Rham Equipment BHDR 45 offers a less expensive, locally manufactured and industry specific drill rig that will manage any drilling operation in surface mining with ease. With strategically placed warehouses and well-trained field technicians, Rham Equipment provide exceptional technical support to ensure the machine can conquer the harsh mining conditions in surface mining in Africa. Furthermore, the BHDR 45 creates a chance to improve on the circular economy of the South African mining sector by supporting a local OEM that can provide specialized product development and superior in-service support. A boosted economy results in a better liquidity for the workers and residents in the local communities in the surrounding areas of a mine and across South Africa.

With an innovative approach to the design of this machine, the BHDR 45 and Rham Equipment will be an invaluable asset to any surface mining operation by providing safe working conditions and reliable, efficient and economical drilling operations.



Jason Ward
+27 83 412 1077
jason@sa-ems.co.za

Mark
+27 82 907 9081
Tel: +27 31 777 1025



5 X BOBCATS
S130 AND S150
- +_5000 HOURS



1 X CAT 320D
2012 MODEL - 11000 HOURS



1 X 2010 CAT 416E
12 000 HOURS



1 X 2003 CAT 416D
11 000 HOURS

EMS

Earthmoving Machine Sales



Jason Ward
+27 83 412 1077
jason@sa-ems.co.za

Mark
+27 82 907 9081
Tel: +27 31 777 1025



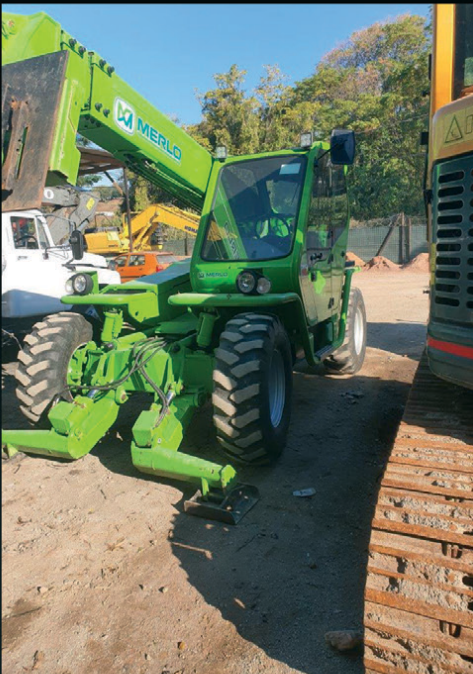
1 X 2017 CAT 428F
2400 HOURS



1 X CAT 320D
2009 MODEL - 8700 HOURS



1 X KOMATSU PC300
8300 HOURS - 2012 MODEL



1 X MERLO TELEHANDLER
RK35.13 2005 MODEL - 5000 HOURS



1 X MANITOU TELEHANDLER
MT1840 - 6000 HOURS



1 X KOMATSU PC220
6200 HOURS - 2014 MODEL



1 X BOBCAT S650
2014 MODEL - 4000 HOURS

GRAHAM'S PLANT REPAIRS

EXPERIENCED ENGINE REBUILDER



TANDUIM CHAIN
MASTER LINKS
for BELL GRADER
EQUIPMENT 770G
PRICE R7000-00 Each
Brand New Genuine
BELL EQUIPMENT PARTS

**ENGINES BUILT
TO ALL SPECIFICATIONS FROM
4CYL - 20V MTU'S 8000 SERIES
QUOTE ON LABOUR
GUARANTEE ON LABOUR ONLY**



MODEL TYPE 2645 K 011
DELP C-00 LJBB03201A
PERKINS
R12 000-00 +
6 MONTH WARRANTY

GRAHAM GOLDSWAIN - 067 237 9119
goldswain9@gmail.com / Tel: 031 337 4743

FILTER CENTRE

Leaders in Heavy-Duty Filtration

**Quality Lubricants
NOW IN STOCK**



Klenz
Pure Protection

www.filtercentre.com
info@filtercentre.com
031 700 9074



Hyundai R260LC-9S fuel efficient crawler excavators

Hyundai R260LC-9S tracked excavators – available exclusively in Southern Africa from HPE Africa – cope efficiently in harsh operating conditions in many industries, including construction, civil engineering, mining and quarrying. The robust Hyundai R260LC-9S excavator series - with an operating weight of 25,2 Tons and a bucket digging force of 0.60 ~ 1.50m³ - is commended globally for fuel-efficiency, dependable operation in tough conditions, enhanced safety onsite, minimal maintenance requirements and extended service life. “What’s impressive about the Hyundai 9S series is that operators are able to fully customise their work environment and easily adjust operating preferences, to suit their individual needs and tasks,” explains Ross Collard, Managing Director, HPE Africa, part of the Capital Equipment Group (CEG) of Invicta Holdings Limited. “The engine and hydraulic horsepower work in unison through an advanced CAPO (Computer Aided Power Optimisation) system, to control flow for every application. At the touch of a button, operators can select their own preferences for boom or swing priority, power mode and optional work tools. The CAPO system also provides complete self-diagnostic features and digital gauges for critical information, including hydraulic oil temperature, water temperatures and fuel level. This system interfaces with multiple sensors placed throughout the hydraulic system, as well as hydraulic flow. “Operators are also able to easily select the correct power mode for specific applications. For example, P (Power Max) mode maximises machine speed and power for mass production. S (Standard) mode provides a reduced, fixed rpm for optimum performance, greater control and improved fuel economy. E (Economy) mode provides precise flow and engine power, based on load demand. By using the versatile U (User) mode, the operator can customise engine speed, pump output, idle speed and other precise machine settings for the specific job.” Safety on site and improved operator comfort were other important factors in the design of the Hyundai 9S series. The spacious cab is fitted with a larger right-side one-piece glass and a reduced front window seam, for improved visibility. For greater operator comfort and reduced stress onsite, there is a climate control system, an adjustable seat, a console and armrest settings, to suit personal operating preferences. The patented hydraulic system of the 9S series has been designed for improved controllability, enhanced efficiencies and smoother operation. Coupled with this, the new auto boom and swing priority system provides optimum speed for each application and the new auto power boost feature provides additional power when required. This series also boasts a new arm-in and boom-down flow regeneration system, for improved speed and operating efficiency. The pump compartment encompasses powerful Kawasaki designed variable volume in-line axial piston pumps. The new compact solenoid block is equipped with four solenoid valves, an EPPR valve, a check valve accumulator and pilot filter, to control 2-speed travel, power boost, boom priority and a safety lock.

The environmentally-friendly Hyundai HM5.9 engine, with 40% fewer parts than other models, is capable of reaching emission standards, without the need for costly electronic engine controls. Customers are also impressed with the long undercarriage design - with nine rollers on each side of the machine - to ensure greater stability in challenging operating conditions. Durable track rail guards keep track links in place, while track adjustment is made easy with standard grease cylinder track adjusters and shock absorbing springs. This series has been designed for effortless maintenance procedures. Ground-line access to critical filters, lube fittings, fuses, machine computer components and wide-open compartments, ensures easy serviceability and reduced maintenance time.

HPE Africa - sole distributor in Southern Africa for Hyundai Construction Equipment and Soosan hydraulic hammers - offers national sales, spares, technical, maintenance and repair services.

For further information | Lani van der Watt, Marketing Manager
HPE Africa, Capital Equipment Group (CEG), Invicta Holdings Limited
Email: lani.vdwatt@hpeafrica.co.za | Telephone: (011) 397 4670 | Web: www.hpeafrica.com



HPE Africa's Hyundai R260LC-9S excavator series is fitted with an advanced new cluster, with 7 inch wide colour LCD screen and toggle switch, that allows the operator to select personal machine preferences. Power and work mode selection, self-diagnostics, an optional rear-view camera, maintenance check lists, start-up machine security and video functions, have been integrated into the cluster, for greater flexibility and improved productivity.



HPE Africa's Hyundai R260LC-9S tracked excavators cope efficiently in harsh operating conditions in many industries, including construction, civil engineering, mining and quarrying.

Truck-mounted forklifts offer increased safety, enhanced productivity and profitability during the COVID-19 crisis



The Moffett range of truck-mounted forklifts encompasses the latest generation machines – the NX series – encompassing the latest technology and advanced design for high productivity, greater safety, improved operator comfort and low maintenance requirements.

The Shamrock Handling Concepts team is committed to assisting customers cope efficiently with load handling and delivery solutions in the face of unprecedented challenges during the COVID crisis. “As companies try to streamline business activities at this difficult time, it is even more important to take extra care to maintain pristine hygiene standards throughout the supply chain - including packaging, transport, unloading and storage of goods,” says Brenton Kemp, managing director, Shamrock Handling Concepts, distributors in Southern Africa of quality-branded materials handling equipment. “What’s critical right now – in every area of our lives – is to maintain social distancing and ensure hygienic business practices. The use of Moffett forklift trucks, which minimises the handling of products, certainly reduces the risk of contamination, product damage and injuries.

“Unlike manual operations that demand side-by-side work and increased product handling, Moffett truck-mounted forklifts reduce the need for human contact with each other and products, which increases safety and protects product integrity.

“Our extensive range of quality branded handling equipment encompasses Moffett truck-mounted forklifts, which have been developed for over 40 years, to optimise safety, deliver high-precision, versatility, profitability and that coveted competitive-edge every company strives for.

“Added to this, labour costs are lowered and turnaround times on-site can be improved by as much as 50%. The increased volume of deliveries contributes to greater profitability, improved customer service levels and also allows for a reduction of capital investment costs in your vehicle fleet.”

What’s notable about Moffett forklifts is they are compatible with nearly any truck or trailer combination and can be dismantled in under a minute. Another advantage is that this truck-mounted forklift fits conveniently at the rear of a truck or trailer, taking up minimal precious load space. The Moffett range of truck-mounted forklifts encompasses the latest generation machines – the NX series – incorporating the latest technology and advanced design for high productivity, greater safety, improved operator comfort and low maintenance requirements. The new NX series, with an efficient power to weight ratio, includes a range of machines for all applications, including industrial, semi-industrial and rough terrain sectors. Attachments – comprising telescopic forks, fork positioners and extensioners, integrated sideshifts and rotators - have been specially-designed for the safe and dependable handling of a wide range of goods. These include food and beverage commodities, chemicals and industrial gas, agricultural and building supplies. These versatile machines are also used safely for fire and rescue operations.

Shamrock Handling Concepts offers a standard three-year warranty with every Moffett forklift, as well as a dependable support service.

For further information | Brenton Kemp, Divisional Managing Director, Shamrock Handling Concepts (Pty) Limited
Telephone: 011-966-9700 | Email: info@shamrock.co.za | Web: www.shamrock.co.za

Kobus Cronje, Regional Sales Manager (Gauteng) Shamrock Handling Concepts
Telephone: 011 953-6806 | Email: kobus@shamrock.co.za | Web: www.shamrock.co.za

Cummins Zambia partners with CAMFED to empower 500 women entrepreneurs over a three-year period



Cummins Zambia has partnered with **CAMFED (Campaign for Female Education)** as part of the global Cummins Powers Women initiative. It is sponsoring a project to empower 500 bright young women over the next three years to start up their own businesses, explains Cummins Zambia General Manager Meshach Kwegyir-Aggrey.

“Our aim is to train these women and to provide them with the necessary resources to become financially independent,” comments Kwegyir-Aggrey. However, the project was nearly derailed by the Covid-19 crisis, which saw it come to an abrupt halt at the beginning of the year.

Not content to abandon the project, Kwegyir-Aggrey reveals that Cummins Zambia decided to use the latest technology to not only continue the training, but also to comply with social distancing and other requirements to combat the Covid-19 pandemic.

“Most of the women have smartphones, so we came up with the idea to give them all an initial presentation on how best to use the Zoom video and web conferencing platform,” elaborates Kwegyir-Aggrey. This then paved the way for Cummins Zambia to continue with the planned training, which encompassed topics such as business management and dealing with financial risk in the light of Covid-19.

“We received hugely enthusiastic feedback. The engagement was very good, with all of the women asking extremely pertinent questions,” adds Kwegyir-Aggrey. “The general consensus was that the women had received the type of practical information and guidance they would not otherwise have been exposed to.”

Such has been the response that Cummins Zambia has been requested to provide follow-up training. The Minister of Health was approached by CAMFED Zambia Country Director Dr. Dorothy Kasanda, and subsequently granted permission to conduct face-to-face interaction with the women.

“Another key element of this highly successful outcome was the engagement of my management team, which facilitated the training in conjunction with our own employees,” points out Kwegyir-Aggrey. Cummins Zambia delivered the training and subsequent support, while the initial interviewing and candidate selection was carried out by CAMFED.

Engineering solutions that build prosperous communities have been part of Cummins since its establishment. This legacy continues with Cummins Powers Women, its most ambitious community initiative ever. It unites leaders and employees around the world in finding solutions to gender inequality in communities. The initiative represents a multi-million dollar investment in proven programmes designed to create large-scale change in the lives of women and girls globally.

Cummins Contacts | Deepa Rungasamy
Communications Manager / Cummins Africa Middle East
Phone: +27 11 589 8512 / Cell: +27 72 630 7501 /

APPOINTMENT ANNOUNCEMENT

Goscor Earthmoving Equipment Melanie Uys as Kathu Branch Manager

Goscor Earthmoving Equipment has appointed Melanie Uys as Branch Manager at Kathu in the Northern Cape, with effect from 1 June.

Uys started her career as Branch Administrator in October 2018 and in June 2019 took over from Rudi Burger as caretaker of the Kathu branch.

Uys has been nurturing the customer base for Goscor Earthmoving Equipment in this important mining region over the years, from a relatively small number to what she now describes as “bursting out of our seams”, and still showing positive growth in the current difficult trading environment due to the Covid-19 crisis.

“Building relationships with our mining customers is important because it allows them to get to know us, and for us to familiarise ourselves thoroughly with their specific requirements,” comments Uys.

“These long-standing relationships with main customers are key to the ongoing success of the SANY and Bobcat brands in the Northern Cape.”

In addition, Goscor Earthmoving Equipment Kathu has the full support of the Goscor Group. “We are a very strong team nationally that continually strives for excellence in everything we do. It is our unmatched customer service and products and aftermarket support that results in many of our customers becoming lifelong proponents of our leading brands,” highlights Uys.

She cites her biggest challenge as being a woman in the male-dominated mining industry. However, once customers get to know Uys as the main face of Goscor Earthmoving Equipment in Kathu, it is a relationship of mutual trust and respect.

“I also wish to pay tribute to my team. Although we are quite small in numbers, we have managed to scale significant heights to date due to our combined strengths, and we look forward to even greater achievements in the future,” Uys concludes.



Goscor Group Contact | Madel Dalla Pria Marketing Manager

Phone: (011) 230-2600 | Cell: 071 382 9553 | Email: mdpria@goscor.co.za

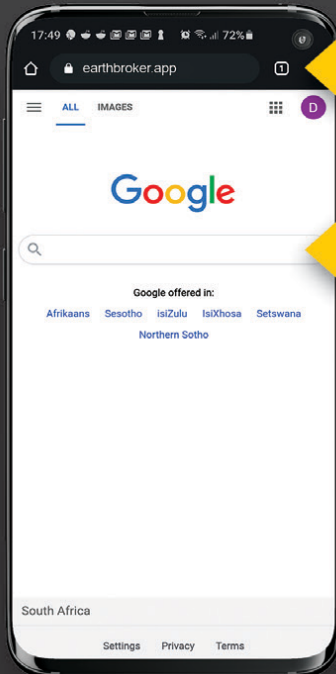
Web: www.goscor.co.za

earthbroker^{publication}

Earthbroker has launched an app allowing you access to our Quick reference & our digital magazine! See below on how you can download it or use the link: <https://earthbroker.app>

How to download our app

FREE FOR ADVERTISERS | APP FOR MOBILE USE ONLY



✓ Enter 'earthbroker.app' here

1 Open Google / Safari on your mobile phone.

✗ Not in search

Access to our **Quick Reference** and our latest eMag at a push of a button

FREE DOWNLOAD

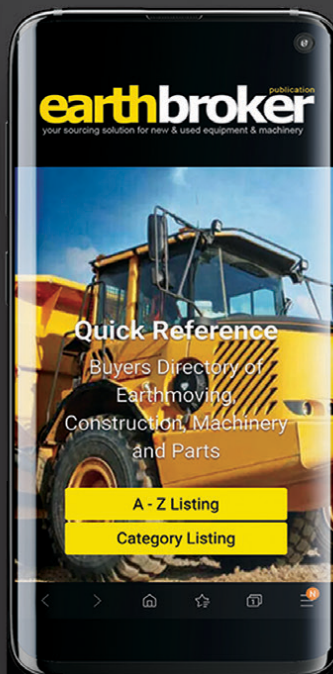
2 Follow prompts to add to home screen and allow notifications if you would like.

Now follow the instructions below on how to use our app once you have saved a shortcut on the home screen.



STEP 1

Click the shortcut once the app has downloaded



STEP 2

Choose A - Z or Category Listing



STEP 3

From here you can call the company directly, email and get directions

For info on how to advertise and get your company listed please contact Janine - 083 456 4027



earthbroker

your sourcing solution for new & used equipment & machinery

- Why deal with different people each month when you can deal with the same friendly people you always deal with.
- We are proudly South African. Support your country who understand your needs.
- WE are ABC Accredited - this means we do print the amount we say we print. No pie in the sky number. We send direct to the correct people in the industry.
- We have our PAMMS certificate...This means our database has been checked and validated.
- Your advert is advertised FREE on our website and on our online digital magazine.
- We design FREE of charge and all changes are done FREE of charge.
- NO contracts to be signed.
(Just a full calender months notice is required for cancellation)



Audit Bureau of Circulations
of South Africa



**We have an
online magazine
in which your
advert is
advertised free
of charge**

We offer excellent service and design.

**Should you have people/companies you would like
added to our database , we will happily do
that should they not already be on our database.**

Please call us for a prompt response and great service!

For further info on how to get your company listed in the Earthbroker please call...**Janine - 083 456 4027**



BELL B20C

Mechanically good condition.
Very well priced.
R145 000

Rodney
0731039582
rodney@marodew.co.za



STRIPPING HITACHI 870/3

Good Runner stripping for
spares. Parts still in excellent
condition.

Rodney
0731039582
rodney@marodew.co.za



ATLAS CRANE 1804

1 000 hours of work. Ready to work
Nothing to be fixed. Based in
Newcastle / Value for money
R 1 million + VAT

Contact Dr J on 072 889 2581
Email: exportintl@aol.com



1X USED KOMATSU PC200-8MO TRACKED EXCAVATOR

S/no: C14118
Year: 2014
SMR: 7752 hours

Shawn Michell 082 568 4033
shawn@plantfinder.co.za
www.plantfinder.co.za
TEL: 041-379 1717



KAWASAKI Z90-2

For sale
R480 000,00 +VAT

Adriaan 076 127 2977
Marc 072 530 7373
Rodney 073 103 9582



1X USED ATLAS WEYCOR AR60 FEL

Year: 2017 / SMR: 2268 hours
Quick hitch, bucket & pallet forks.
Auxiliary Hydraulics

Shawn Michell 082 568 4033
shawn@plantfinder.co.za
www.plantfinder.co.za
TEL: 041-379 1717



1X USED CAT 226B2 SKIDSTEER LOADER

Serial no: MJH15131
Year: 2010
SMR: 5500

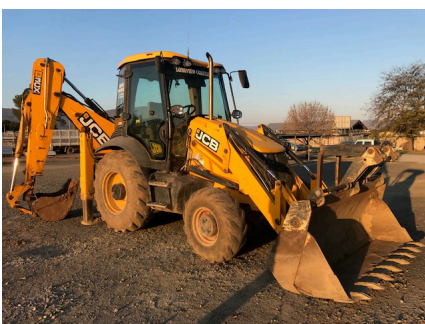
Shawn Michell 082 568 4033
shawn@plantfinder.co.za
www.plantfinder.co.za
TEL: 041-379 1717



1X CAT 428E (4X4) TLB

Serial no: DPH03437
Year: 2012
SMR: 10400 hours

Shawn Michell 082 568 4033
shawn@plantfinder.co.za
www.plantfinder.co.za
TEL: 041-379 1717



1X USED JCB 3CX SITEMASTER

Serial no: 2108117 / Year: 2013
SMR: +- 5200 hours
Auxiliary Hydraulics Fitted
to Backhoe.

Shawn Michell 082 568 4033
shawn@plantfinder.co.za
www.plantfinder.co.za
TEL: 041-379 1717



1X USED JCB 406 FEL

Serial no: 2318993
Year: 2015 / SMR: 2850 hours
Kohler Engine.

Stuart McKenzie
082 558 7901
smj@mckenzieplant.co.za
www.mckenzieplanthire.co.za

For further info on how to get your company listed in the Earthbroker please call...**Janine - 083 456 4027**

For further info on how to get your company listed in the Earthbroker please call...**Janine - 083 456 4027**



1 X CAT 938K FEL'S 2013
2 X CAT 950H FEL'S
2013 MODELS
1 X CAT 980H FEL 2014
MODEL
2 X SEM 668C FEL 2014
MODELS

Contact Jaap
082 892 1327
associated1@xnet.co.za



**C11/13 COMPLETE
HEAD**

WhatsApp Message
+27 (0)82 405 3494
sales@ipsglobal.net



**D5G
NEW COOLER
GROUP**

WhatsApp Message
+27 (0)82 405 3494
sales@ipsglobal.net



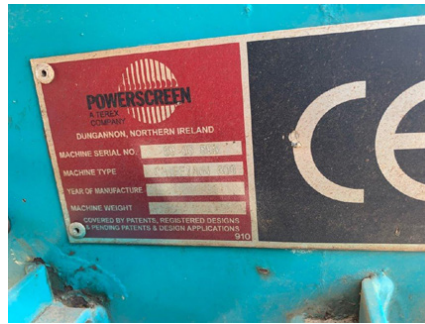
**3126B
COMPLETE HEAD**

WhatsApp Message
+27 (0)82 405 3494
sales@ipsglobal.net



930 DIFF

WhatsApp Message
+27 (0)82 405 3494
sales@ipsglobal.net



C6.6 LONGBLOCK

WhatsApp Message
+27 (0)82 405 3494
sales@ipsglobal.net



**D85-18 NEW
TRACKGROUPS**

WhatsApp Message
+27 (0)82 405 3494
sales@ipsglobal.net



**3126
ENGINE**

WhatsApp Message
+27 (0)82 405 3494
sales@ipsglobal.net



2006 BELL L2106D

12000 hours,
5 cube coal bucket
included in price
R 550 000,00 + VAT

Adriaan 076 127 2977
Marc 072 530 7373
Rodney 073 103 9582

For more info on advertising your
machine or spares in the classifieds
please call **Janine** on **083 456 4027**
janine@earthbroker.co.za

For further info on how to get your company listed in the Earthbroker please call...**Janine - 083 456 4027**

Classifieds

For further info on how to get your company listed in the Earthbroker please call...**Janine - 083 456 4027**



HITACHI ZX670 LCR-3

2011 / 20 000 HRS

082 780 0084 | 021 903 2667
bradley@bmhtradinginternational.com



HITACHI ZX470 LCR-5G

2013 / 12 600 HRS

082 780 0084 | 021 903 2667
bradley@bmhtradinginternational.com



ZX 870 LCR-5G

2012 / 16 500 HRS

THOMAS MITTAG
072 545 6223
info@mae-equipment.com
www.mae-equipment.com



D8T DOZER

2011 model
low hours / import unit
ZAR 3.700.000

THOMAS MITTAG
072 545 6223
info@mae-equipment.com
www.mae-equipment.com



KUBOTA U50-5

2017 / 300 HRS

082 780 0084 | 021 903 2667
bradley@bmhtradinginternational.com



CAT773F WATERBROWSER

2008 model
Call for Price

THOMAS MITTAG
072 545 6223
info@mae-equipment.com
www.mae-equipment.com



LIEBHERR 538 LOADER

2013 MODEL
(AUTOMATIC GREASING
SYSTEM AND L5 TYRES)
R 425 000 + VAT

082 454 0934
charlesjnr@transand.net
044 695 0105



HITACHI ZX330LC-5G

2013 / 7 000 HRS

082 780 0084 | 021 903 2667
bradley@bmhtradinginternational.com



LIEBHERR R914B EXCAVATOR 24 TON

2004 MODEL (NEW LINK
ASSEMBLYS AND
GROUSER SHOES)
R 150 000 + VAT

082 454 0934
charlesjnr@transand.net
044 695 0105



BELL B20C DUMPER

(Not Registered)
R 420 000 + VAT

082 454 0934
charlesjnr@transand.net
044 695 0105

For further info on how to get your company listed in the Earthbroker please call...**Janine - 083 456 4027**

For further info on how to get your company listed in the Earthbroker please call...**Janine - 083 456 4027**



HITACHI 670-3

STRIPPING FOR
SPARES

Adriaan 076 127 2977
Marc 072 530 7373
Rodney 073 103 9582



2 X KOMATSU D51EX-22 DOZER

Stuart McKenzie
082 558 7901
smj@mckenzieplant.co.za
www.mckenzieplanthire.co.za



MERCEDES BENZ 2628 TIPPER TRUCK

Model 407 Series
R 120 000 + VAT

082 454 0934
charlesjnr@transand.net
044 695 0105



2013 HITACHI ZX210W-3

6 700 hrs

082 780 0084 | 021 903 2667
bradley@bmhtradinginternational.com



MERCEDES-BENZ 2628 TIPPER TRUCK MODEL V SERIES

(Roadworthy certificates)
R 200 000 + VAT

082 454 0934
charlesjnr@transand.net
044 695 0105



CAT 740B

STRIPPING FOR
SPARES

Ladis : +27 10 823 7322
ladislas.l@pandrearthmoving.com
Grant : +27 10 823 8821
grant@prearthmoving.com



1 X CAT 320D

2012 model
11000 hours

Jason Ward
+27 83 412 1077
jason@sa-ems.co.za



CAT D11R

RUNNING MACHINE

Ladis : +27 10 823 7322
ladislas.l@pandrearthmoving.com
Grant : +27 10 823 8821
grant@prearthmoving.com



1 X CAT 320D

2009 model
8700 hours

Jason Ward
+27 83 412 1077
jason@sa-ems.co.za



1 X KOMATSU PC300

8300 hours
2012 model

Jason Ward
+27 83 412 1077
jason@sa-ems.co.za

For further info on how to get your company listed in the Earthbroker please call...**Janine - 083 456 4027**

Agriculture / Forestry

Bell Equipment
Filter Centre
LNE Agri-Earth

Attachments

BMH Trading International
CTC Plant Company (PTY) Ltd
Rhino Excavator Hammers
Plant Finder
Machinery Contractors

Buckets

INMINE
Industrial Plant Solutions
Machinery Contractors
Paramount Equipment
STM Mining
TJB Earthmoving Parts
Wearpact

Crushing

Marsay Equipment
Transand

Dyno Testing

Earthmoving Specialist
Mzantsi Transmissions
Power Transmission Technology

Exhausts

Rustpet Exhausts

Engineering

All Africa Supplies
Earthmoving Specialist
Earthmach
East Coast Gears
Gears for Africa
Grind Right Engineering
KDH Hydraulics
P&R Earthmoving
TJB Earthmoving Parts

Gearbox / Transmissions

East Coast Gears
Mzantsi Transmissions
P&R Earthmoving
Power Transmission Technology
Sintech
Vortex

Gears

East Coast Gears
Gears for Africa

G.E.T / Undercarriage

Blumaq
Capital Equipment Parts
Centrax
ESP
ITR Africa
Industrial Plant Solutions
P&R Earthmoving
Paramount Equipment
Spec-Cast Wear Parts
STM Mining
TJB Earthmoving Parts
Tractor Grader Spares
Wearpact

Hydraulics

Industrial Plant Solutions
KDH Hydraulics
Mid Plant Services
P&R Earthmoving
Power Transmission Technology
One Stop Procurement
TJB Earthmoving Parts

Lifting Equipment

Liugong
Spider Mini Cranes SA

Lubricants & Oils

Bell Equipment
Earthmach
Filter Centre

Machine Hire

Amalgamated Plant
BLC Plant Company
Rhino Excavator Hammers
Spider Mini Cranes SA

New Machines

Barloworld SEM
Bell Equipment
Earthmach
Kemach JCB
Lovol Construction
Liugong
Powertrans
Spider Mini Cranes SA

New Parts

Bell Equipment
Blumaq
CTC Plant Company
Capital Equipment Parts
Centrax
East Coast Gears
ESP
Filter Centre

New Parts

ITR Africa
 Industrial Plant Solutions
 LNE Agri-Earth
 Lovol Construction
 Machinery Contractors
 Mid Plant Services
 One Stop Procurement
 Powertrans
 Prime Plant
 Queensburgh Plant Sales
 Rhino Excavator Hammers
 P&R Earthmoving
 Paramount Equipment
 Rustpet Exhausts
 Shin-Li Trading
 Spec-Cast Wear Parts
 STM Mining
 Shin-Li Trading
 Sintech
 Tractor Grader Spares
 Wearpact
 WEICHI SEM Parts

Pumps

All Africa Supplies
 Blumaq
 Industrial Plant Solutions
 Shin-Li Trading

Seats / Upholstery

The Seat Connection

Services

Bell Equipment
 CTC Plant Company
 Dura Sales
 Earthmach
 Gears for Africa
 INMINE
 ITR Africa
 LNE Agri-Earth
 Lovol Construction
 KDH Hydraulics
 Power Transmission Technology
 Prime Plant
 Queensburgh Plant Sales
 Marsay Equipment
 Vortex Transmissions

Turbos

Industrial Plant Solutions
 Turboworks

Torque Convertors

ITR Africa
 Industrial Plant Solutions
 One Stop Procurement
 Sintech

Tyres

Associated Equipment / Vendel Civils

Used Machines

Atlas Masjiene
 All Africa Supplies
 Amalgamated Plant
 Associated Equipment / Vendel Civils
 Barloworld SEM
 BLC Plant Company
 BMH Trading International
 CTC Plant Company
 Dozer
 Dura Equipment Sales
 Earthmach
 Earthmoving Machine Sales
 IMIME
 Mae Equipment
 Marsay Equipment
 McKenzie Plant Sales
 Plant Finder
 Powertrans
 Queensburgh Plant Sales
 STM Mining Equipment
 Spider Mini Cranes SA
 Transand

Used Parts

All Africa Supplies
 Bell Equipment
 BLC Plant Company
 BMH Trading International
 Capital Equipment Parts
 Dozer
 Dura Parts
 East Coast Gears
 Earthmoving Machine Sales
 Earthmoving Specialist
 ITR Africa
 INMINE
 Industrial Plant Solutions
 Machinery Contractors
 Mid Plant Services
 Nduna Spares
 P&R Earthmoving
 Parramont Equipment
 Powertrans
 Prime Plant
 Queensburgh Plant Sales
 STM Mining Equipment
 Shin-Li Trading
 Turboworks
 WEICHI SEM Parts

Should you want to receive a free copy of our magazine please email your details to
janine@earthbroker.co.za

earthbroker

your sourcing solution for new & used equipment & machinery

The Earthbroker is published monthly and 5400 copies are sent to all the mines, quarries, and all companies dealing with earthmoving and construction in South Africa, Africa and some overseas countries. We are **ABC accredited** and have our **Pamms certificate No: 2A8DD9F60574FFC2A4EEEE01A**.

We also have a website where anyone can view the magazine, which is updated monthly with the latest changes and advertisements.

Please view our E-Mag on www.earthbroker.co.za

We accept about 5 editorials a month which we insert free of charge. Should you have an editorial which is relevant to the industry, we will gladly give it consideration.

For details of our prices on a full page, half page or quarter page, please phone me on 083 456 4027 or e-mail me at janine@earthbroker.co.za. We do not ask anyone to sign a contract, however we do insist on a **full calendar month's notice** for cancellation.

Please note that all quotations exclude VAT. We do insertions, (own printing costs) at R1.50 each excluding VAT. Classifieds at R500.00 excluding VAT for a business card size advertisement only.

Janine Sargeant
(CELL)083 456 4027
janine@earthbroker.co.za

**Should you want to receive a free copy of our magazine
please email your details to janine@earthbroker.co.za**

Conditions of Acceptance for advertising

Adverts are subject to the following conditions:

1. Often we receive faxes with illegible letters or numbers. We accept no responsibility due to this.
2. We accept NO responsibility for errors in advertisements received telephonically.
3. We reserve the right to refuse placement or to place the advertisement/s as we see fit.
4. No responsibility will be taken for omission of advertisements, for any errors/colour-differences in advertisements or any results due to such errors.
5. We accept no responsibility for the quality of goods advertised. We merely bring buyers and sellers into contact with each other and we are not responsible for any results due to transactions made through the advertisements.
6. Please note one full calendar months written notice for cancellations.
7. Payment due prior to publication or interest will be charged.
8. There will be an annual increase of 10% at the beginning of each year.
9. The Earthbroker will not be held responsible for content of any advert inserted in our magazine.

| COMPANY | BRANCH | DESIGNATION | CONTACT | TEL NO | A/H-CELL | EMAIL |
|------------------------------------|---------------|------------------|---------------------|--------------------|--------------------|---------------------------------------|
| Atlas Masjiene | JHB | | Dewald Hattingh | +27(0) 72 547 2198 | +27(0) 11 973 3737 | info@atlasmasjiene.co.za |
| Atlas Service Centre | JHB | | Fourie Von Tonder | | 083 301 1632 | |
| Action Equipment Co | JHB | Sales | Yolanda | 011 452 1298 | | yolanda@action.co.za |
| Africaplant.com | Newcastle | Sales | Mark | 034 318 3032 | 082 301 3961 | admin@africaplant.com |
| Afritool – Rent | JHB | | Karen Abrams | 011 974 2819 | 082 523 9777 | karen.abrams@fluor.com |
| Alf's Tippers | JHB | Sales | Alf Ferreira | 011 824 0013 | 083 260 6929 | alfplant@global.co.za |
| All Africa Supplies | JHB | | Jody Da Silva | 011 918 9976 | | sales@allafricasupplies.net |
| Amplant | Polokwane | | Eddie Simpson | 015 293 1221 | 082 904 7694 | simpsons@amplant.co.za |
| Anric Enterprises | JHB | | Ric de Nysschen | 011 740 0975 | 082 647 9955 | anric@cybertrade.co.za |
| Aquajet Profiles (Pty)Ltd | JHB | Director & Sales | Brad | 011 908 5550 | 073 470 4958 | info@aquajetprofiles.co.za |
| Arch Equipment | JHB | | Greg Archibald | | 082 803 4227 | archhire@mweb.co.za |
| Associated Equipment Co | JHB | Sales | Jaap | 011 801 4911/2 | 082 892 1327 | associated1@xnet.co.za |
| AVANT SA CPT | | | Wally | 021 851 0722 | 076 688 3399 | info@avantsa.co.za |
| Azrel Equipment | JHB | Sales | Mike Imrie | (010)590 8048 | 083 230 3118 | mike@azrelequipment.com |
| B&B Plant / Unicrane | Empangeni | | Bob Fogg | 035 787 0679 | 082 570 5781 | sales@bbplant.co.za |
| Barloworld Equipment Co | | | | 011 929 0000 | | |
| Barloworld Equipment Co | Durban | Parts | Brett Woodhouse | 031 705 8500 | 071 484 1035 | bwoodhouse@barloworld-equipment.com |
| Barloworld Equipment Co | Durban | Parts | R. Haripersadh | 031 705 8500 | | rharipersadh@barloworld-equipment.com |
| Barloworld Equipment Co | Newcastle | Parts | Milan Pather | 034 315 2847 | 073 971 2046 | mpather@barloworld-equipment.com |
| Barloworld Equipment Co | Newcastle | Sales | Brendan Moore | 034 315 2847 | 073 781 8865 | |
| Barloworld Equipment Co | Richardsbay | CRS | Rolfe Botes | 035 797 6300 | 082 904 9619 | jhumphries@bw-eq.com |
| Barloworld Equipment Co | Bloemfontein | Sales | Quentin Coetzee | 051 4091200 | 078 460 2622 | qcoetzee@barloworld-equipment.com |
| Bell Equipment | Richards Bay | Parts | Jackie Smith | 035 907 9111 | 082 550 8791 | bellparts@bell.co.za |
| Bell Equipment | | Sales | Andrew Pretorius | 011 928 9700 | 071 607 3978 | partssales@bell.co.za |
| Bell Equipment | JHB | Used Parts | Fazel Patel | 011 928 9700 | | usedparts@bell.co.za |
| Bell Equipment | JHB | Machine Sales | Myburgh | 011 928 9700 | | sales@bell.co.za |
| Bert's Bricks (Pty)Ltd | Potchefstroom | Sales | Lizelle | (018)292 1615 | | marketing@bertsbricks.co.za |
| BKB Van Wyk | JHB | | | 017 712 2132 | | vanwykinfo@telkomsa.net |
| Blumaq | JHB | | John Beukes | 011 966 5092 | | john.beukes@blumaq.com |
| BLC Plant Company | JHB | Machine Sales | Luigi Stravino | 011 555 2000 | 082 552 7017 | luigistravino@blcplant.com |
| BLC Plant Company | JHB | Machine Sales | Paolo Stravino | 011 555 2000 | 082 852 3721 | paolostravino@blcplant.com |
| BLC Plant Company | JHB | Machine Sales | Andrew McCall | 011 555 2000 | 082 256 0334 | andrewmccall@blcplant.com |
| BLC Parts | JHB | Parts Sales | Robbie Stocks | 011 555 2000 | 082 492 9263 | |
| BLC Parts | JHB | Sales | Mike du Plessis | 011 555 2000 | 082 508 2908 | mikeduplessis@blcplant.com |
| BLC Parts | JHB | Sales | Michael Marriott | 011 555 2000 | 082 905 8983 | michaelmarriott@blcplant.com |
| BMH Trading International | Cape Town | | Bradley | 021 903 2667 | 082 780 0084 | bradley@bmhtradinginternational.com |
| Bom-mach / Stampede | JHB | Sales | Jabu | 011 394 5704 | | info@stampede.co.za |
| Bruforce | JHB | | Craig | 011 393 1298 | 083 627 2533 | bruforce@lantic.co.za |
| Burgers Equipment & Spares | | | Anka Burger | 011 979 3636 | | admin.za@burgersafrica.com |
| Caldas Engineering & Manufacturing | JHB | Marketing | Melanie | 011 453 7797 | | info@caldas.co.za |
| Capital Equipment Parts | JHB | | Mark | 011 568 4215 | | info@capiparts.co.za |
| Centrax | JHB | Sales | Brendan | 011 974 4307 | 083 654 7885 | brendan@centraxsa.co.za |
| Centrax | DBN | Sales | Steve | 086 123 6872 | 083 613 0664 | centraxkzn@telkomsa.net |
| Cranes Direct | Boksburg | Parts Sales | John Thage | 011 894 8056 | 083 254 4068 | john@cranesdirect.co.za |
| Cranes Direct | Boksburg | Sales | Mark Le Roy | 011 894 8056 | 083 233 2140 | mark@cranesdirect.co.za |
| CTC Plant Company | Cape Town | Owner | Colin McOwen | 021 386 4190 | 082 440 4806 | colin@ctcplant.co.za |
| CTC Plant Company | Cape Town | Sales | Evert Jooste | 021 386 4190 | 082 825 8865 | evert@ctcplant.co.za |
| CTC Plant Company | Cape Town | Sales | Peter Groenewald | 021 386 4190 | 072 368 5581 | peterg@ctcplant.co.za |
| CTC Plant Company | Cape Town | Sales | Mark Walker | 021 386 4190 | 082 441 2446 | markw@ctcplant.co.za |
| CTC Plant Company | Cape Town | Sales | Robert Freeman | 021 386 4190 | 079 500 3940 | robert@ctcplant.co.za |
| CTC Plant Company | Cape Town | Parts | Mark Swanepoel | 021 386 4190 | 082 825 6966 | marks@ctcplant.co.za |
| CTC Plant Company | Cape Town | Parts | Nico Vermeulen | 021 386 4190 | 084 525 6966 | nic_v@ctcplant.co.za |
| CTC Plant Company | Cape Town | Service | Olla van den Heever | 021 386 4190 | 082 467 1894 | olla@ctcplant.co.za |
| CTC Plant Company | Cape Town | Transport | Ian Geyser | 021 386 4190 | 082 440 5861 | ian@ctcplant.co.za |
| CTC Plant Company | Cape Town | Transport | Shaun Haman | 021 386 4190 | 082 495 2640 | shaun@ctcplant.co.za |
| DBZ Diesel Parts | JHB | | | 087 751 4555 | 074 106 2158 | jhb@dbzdiesel.com |
| DBZ Diesel Parts | Cape Town | | Jason Martincich | 021 556 6502 | 082 353 5971 | jason@dbzdiesel.com |
| DBZ Diesel Parts | Durban | | | 031 564 8091/2 | 082 565 8446 | durban@dbzdiesel.com |
| D- MAN SALES | JHB | Sales | Wessels | | 072 172 7718 | wessels@lpss.co.za |
| Deutz Diesel Engines | Meadowdale | | Johan Reiners | (011)974 3549 | 082 457 1542 | miere@icon.co.za |
| Deutz Diesel Power | Durban | Branch manager | Nivern Pather | 031 700 2384 | 082 375 4912 | nivern@deutz.co.za |
| Deutz Diesel Power | JHB | | Nathan Kitchen | 011 923 0600 | | nathan@deutz.co.za |
| DGI Trading | JHB | | Henk Arnold | 010 065 0888 | 083 233 0019 | henk.arnold@dgitrading.co.za |
| Dirt Diggers | JHB | | Vic Viljoen | 011 023 6674 | 082 822 3915 | vicv@merchantwest.co.za |



“The man who stops advertising
to save money is like the man
who stops the clock to save time.”
- Thomas Jefferson -

In difficult economic times one should put more effort into promoting
your business, your services and your products.

Cutting back on your advertising will ensure that your business loses ground
to competitors who know and understand this.

Quick Reference

| COMPANY | BRANCH | DESIGNATION | CONTACT | TEL NO | A/H-CELL | EMAIL |
|-------------------------------|------------------|--------------------|-------------------------|------------------|--------------|-----------------------------------|
| Dosco Hydraulic Eng. cc | Montague Gardens | | David Laubscher | 021 551 2283 | 082 579 6465 | david@doscocape.co.za |
| Dosco Hydraulic Eng. cc | Montague Gardens | | Mike Hart | 021 551 2283 | 082 228 5031 | |
| Dozer | JHB | | Graeme | 011 452 1224 | | info@dozer.co.za |
| Dozer | JHB | Specialized Sales | Chris Cronje | 011 452 1224 | 082 491 5472 | info@dozer.co.za |
| Dura Equipment | JHB | Sales | Prinsloo Munro | 011 918 4760 | 071 611 7281 | prinsloo@durasales.co.za |
| Dura Equipment | JHB | Sales | Ernest Human | 011 918 4760 | 079 874 5458 | ernest@durasales.co.za |
| Dura Equipment | JHB | Sales | Jerry van Niekerk | 011 918 4760 | 082 895 5611 | durasales.co.za |
| Dura Equipment | JHB | Sales | Coenie Albertyn | 011 918 4760 | 083 251 8046 | coenie@durasales.co.za |
| Dura Equipment | JHB | Sales | Curtis Brown | 011 918 4760 | 083 258 5784 | curtis@durasales.co.za |
| Dura Equipment | Cape Town | Sales | Pottie Potgieter | 021 988 6618 | 083 600 0729 | pottie@durasales.co.za |
| Dura Equipment | Cape Town | Sales | Gerrie du Randt | 021 988 6618 | 082 950 7040 | gerrie@durasales.co.za |
| Dura Equipment | Cape Town | Sales | Charmaine Lombard | 021 988 6618 | 082 777 1544 | charmaine@durasales.co.za |
| Earth Mach | Mpumalanga | | Chris | 017 843 2072 | 083 232 8713 | chris@earthmach.co.za |
| Earth Moving Plant & Trans. | Pinetown | | Richard | 031 705 1770 | 083 777 0152 | richard@ept.co.za |
| EHD Johannesburg | | Sales | Lodewyk van As | 011 870 5000 | | ehd@ehd.co.za |
| Earthmoving Machine Sales | KZN | Sales | Jason | 031 777 1025 | 083 412 1077 | jason@sa-ems.co.za |
| East Coast Gears | KZN | Sales | Johan | 031 701 3500 | 084 244 3324 | eastcoastgears@gmail.com |
| ELB Equipment | | | | 011 306 0700 | | elb@elbequipment.co.za |
| Equipment Parts & Engines | Isando | Managing member | Attie vd Bergh | 011 571 9000 | 082 655 9276 | info@equipmentparts.co.za |
| ESP | Isando | Div Manager | Gary Wright | 011 398 1700 | 082 449 6773 | garyw@espa.co.za |
| ESP | Benoni | Div Manager | Adrian Erasmus | 011 845 2911 | 083 449 0519 | adriane@espa.co.za |
| ESP | Pretoria | Reg Manager | Willie v.d Merwe | 012 804 6706 | 082 789 0828 | williev@espa.co.za |
| ESP | Middelburg | Div Manager | Leon Bezuidenhout | 013 246 2520 | 083 778 9877 | leonb@espa.co.za |
| ESP | Pinetown | Reg Manager | Shaun Clarke | 031 705 4200 | 082 413 1103 | shaunc@espa.co.za |
| ESP | Cape Town | Reg Manager | Jaco Bekker | 021 945 1030 | 072 384 4901 | jacob@espa.co.za |
| ESP | Port Elizabeth | Branch Supervisor | Rainier Gerber | 041 484 4575 | 083 698 1805 | rainierg@espa.co.za |
| ESP | Bloemfontein | Reg Manager | Craig Wansbury | 051 432 4501 | 082 413 2708 | craigw@espa.co.za |
| ESP | Kimberley | Branch Supervisor | Kingsley Olyn | 053 831 8349 | 082 805 7558 | kingsleyo@espa.co.za |
| Filter Centre | Pinetown | Manager | Viyen Maharaj | 031 700 9074 | 076 727 3985 | info@filtercentre.com |
| Filvent | Witbank | | Bernard | 013 656 2726 | | workshopmanager@filvent.co.za |
| Fluid Blast Engineering | JHB | | George Slabbert | | 082 550 1385 | fluid.blast@live.com |
| Force 8 CC | Cape Town | | Justin Nicoll | 021 535 1117 | 082 373 9802 | info@force8.co.za |
| Full Blast Hydraulics | JHB | | Andre Calitz | (011)900 3790 | | info@fullblasthydraulics.com |
| Fusion Torque Components | JHB | Director | Eldred Carstens | 011 828 9023 | 083 460 6790 | eldredfusion@telkomsa.net |
| Gears for Africa | JHB | Sales | Carl | 011 824 2017 | | carl@gearsforafrica.co.za |
| Gears for Africa | CPT | Sales | Carl | 021 577 1030 | | carl@gearsforafrica.co.za |
| GET Spares | JHB | Sales | Raymond | (011)397 5276 | 082 655 2301 | sales@getspares.co.za |
| GET Spares | JHB | Sales | Freddy | (011)397 5276 | 082 604 0045 | sales@getspares.co.za |
| GET Spares | JHB | Sales | Clyde | (011)397 5276 | 082 581 5152 | sales@getspares.co.za |
| Gillroy | Durban | | Rob Gillit | 031 765 2745 | 083 661 2057 | info@gillroyplant.co.za |
| G-Man Trading | JHB | Sales | Luke Jr. | 011 672 7011 | | lukej@gman.co.za |
| GO Industry - Dove Bid | | | John Cowing | 0861 463 683 | 083 662 0237 | john.cowing@liquidityservices.com |
| GR Spares | Pinetown | Sales | Gavin | 031 705 5463 | 082 452 8690 | grspares@webstorm.co.za |
| Grindright Engineering | Middelburg | | Piet De Vos | 013 246 2308 | 064 849 2320 | grindright@gmail.com |
| HL Du Plooy | Harrismith | | Hennie Du Plooy | 082 719 8744 | 082 574 4212 | hennie@hiduplooyplant.co.za |
| Heavy Duty Earthmoving Parts | | | Jannie Burger | 011 394 4125/6/7 | | jannie@hdep.co.za |
| HPE Africa | Jet Park | Sales Manager | Lani | 011 397 4670 | | marketing@hpeafrica.co.za |
| HPE Africa | Durban | Branch Manager | Adam Armitage | 031 700 3426 | | Adam.armitage@hpeafrica.co.za |
| HPE Africa | East London | Branch Manager | Leon Dreyer | 043 732 1428 | | leon.dreyer@hpeafrica.co.za |
| HPE Africa | Cape Town | Branch Manager | Gary Pnematicatos | 021 905 0581/2 | | Gary.P@hpeafrica.co.za |
| Industrial Engine Parts | JHB | Sales | Morne | 011 868 5436 | 082 851 7514 | sales@ieppower.co.za |
| Industrial Plant Solutions | Natal | | David Botha | | 083 405 3494 | sales@ipsglobal.net |
| Immine Inala Mining Services | Witbank | | Clement Van Der Merwe | | 082 414 1393 | sales@immine.co.za |
| ITR SA | JHB | National Sales | Manager Carel Zwieglaar | 011 614 0070 | | carel.zwieglaar@itrafrica.com |
| ITR SA | Middelburg | | Steven Hugo | 013 590 5614 | | middelburg@itrafrica.co.za |
| ITR SA | Bloemfontein | Sales Manager | Jacques Billing | 051 011 5620 | | jacques.billing@itrafrica.com |
| ITR SA | JHB | U/C Manager | Sean Smit | 011 614 0070 | | sean.smit@itrafrica.com |
| ITR SA | CPT | | Lee-Anne | 021 905 7340 | | lee-anne.vandernest@itrafrica.com |
| ITR SA | Kathu | Branch Manager | Michiel Jacobs | 053 723 2245 | | michiel.jacobs@itrafrica.com |
| ITR SA | EL | Branch Manager | Shaun Smith | 043 748 3541 | | shaun.smith@itrafrica.com |
| ITR SA | PE | Reg. Manager | Basil De Coning | 041 451 2210 | | basil.deconing@itrafrica.com |
| ITR SA | Pinetown | Sales Manager | Quintin Pillay | 031 941 1133 | | bronwyn.claesson@itrafrica.com |
| ITR Africa | Zambia | Operations Manager | Andre Synders | 260 96 351 3429 | | andre.synders@itrafrica.com |
| ITR Africa | Namibia | Director | Hanjo Schierschmidt | 264 83 331 5160 | | hanjo.schierschmidt@itrafrica.com |
| J&T Earthmoving Maintenance | Kempton Park | | Alex Savage | | 081 895 5583 | alex@earthmovingmaintenance.co.za |
| Jacobs Transport | Vereeniging | Sales | Gys Jacobs | 010 200 9946 | 083 544 0275 | gys@jacobstransport.co.za |
| JBS Plant Hire | Klerksdorp | | Tonie van den Heever | 018 469 1016/7 | 083 654 7809 | jjvdh@lantic.net |
| Johnson Taylor | JHB | Sales Manager | Graham | 011 614 5122 | | graham@johnsonntf.co.za |
| JW Plant Hire and Sales | Welkom | Sales | Leon | 057 355 1119 | 083 253 6110 | j.w.plant@telkomsa.net |
| Kaltire | | | Jacques Roux | 012 548 9327 | 083 777 9497 | jacques_roux@kaltire.com |
| Kappa Engineering | | Managing Director | Gerrie Visagie | 011 828 5506/8 | 082 575 2199 | gerrie@kappaeng.co.za |
| Kappa Engineering Procurement | | Rebuild Director | Nathaniel Hauptfleisch | 011 828 5506/8 | 082 928 6312 | nathaniel@kappaeng.co.za |
| KDH Hydraulics | JHB | | Ricus | 011 762 9001/2 | 071 678 3746 | ricus@kdhhydraulics.co.za |
| Kemach JCB | JHB | | | 011 826 6710 | | sales@kemachjcb.co.za |
| Kemach JCB | Middelburg | | | 013 244 1839 | | sales@kemachjcb.co.za |
| Kemach JCB | Pretoria | | | 012 548 2956 | | sales@kemachjcb.co.za |
| Kemach JCB | Bloemfontein | | | 051 432 3978 | | sales@kemachjcb.co.za |
| Kemach JCB | Durban | | | 031 700 8278 | | sales@kemachjcb.co.za |
| Kemach JCB | Richards Bay | | | 035 751 2718 | | sales@kemachjcb.co.za |
| Kemach JCB | CPT | | | 021 949 7442 | | sales@kemachjcb.co.za |
| Kemach JCB | Port Elizabeth | | | 041 453 1819 | | sales@kemachjcb.co.za |
| Kemach JCB | East London | | | 043 732 1902 | | sales@kemachjcb.co.za |
| Kemach JCB | George | | | 044 878 0366 | | sales@kemachjcb.co.za |

| COMPANY | BRANCH | DESIGNATION | CONTACT | TEL NO | A/H-CELL | EMAIL |
|--|----------------------------|------------------------|------------------------|-----------------|--------------|----------------------------------|
| Kemach JCB | Mthatha | | | 047 531 1688 | | sales@kemachjcb.co.za |
| KHD Electrical | | | Delville Kuhn | 011 392 4444 | | delville@khdiesel.co.za |
| Komatsu | Cape Town | Sales | Frederick van Ryneveld | 021 951 1251 | 082 317 2849 | info@komatsu.co.za |
| Komatsu | Gauteng | Sales | Breton Alexander | 011 923 1000 | | info@komatsu.co.za |
| Komatsu | Gauteng | Sales | Graeme Armstrong | 011 923 1000 | | Graeme.Armstrong@komatsu.co.za |
| Komatsu | Gauteng | Sales | Karen van der Walt | 011 923 1000 | | Karen.vanderWalt@komatsu.co.za |
| Komatsu | Gauteng | Sales | Francois Griesel | 011 923 1000 | | Francois.Griesel@komatsu.co.za |
| Komatsu | Gauteng | Sales | Sascha Caixeiro | 011 923 1000 | | Sascha.Caixaieiro@komatsu.co.za |
| Komatsu | Pinetown | Sales | Jacques van der Sandt | 031 710 4950 | 082 888 0995 | info@komatsu.co.za |
| Komatsu | Port Elizabeth | Sales | George Hyman | 041 452 6555 | 082 882 9576 | robd@komatsu.co.za |
| Komatsu | White River | Sales | Fortune Mathiba | 013 758 9900 | 083 675 1756 | pietvw@komatsu.co.za |
| Komatsu | Wolmeransstad | Sales | Piet du Toit | 018 596 2244 | 083 271 3567 | info@komatsu.co.za |
| Komax Spares | JHB | | Jacques | 011 664 8828 | 082 616 1654 | jacques@jsaeearth.co.za |
| Komax Spares | JHB | | Gawie | 011 664 8828 | 082 650 0505 | |
| Komax Spares | JHB | | Danie | 011 664 8828 | 076 222 2708 | |
| Kruiper Spares | Port Elizabeth | Sales | Gary | 041 585 6455 | 083 321 0819 | kruiper@global.co.za |
| Kruiper Spares | Port Elizabeth | Sales | Bill | 041 585 6455 | 082 569 2740 | kruiper@global.co.za |
| Kruiper Spares | Port Elizabeth | Sales | Philip | 041 585 6455 | 083 235 3919 | kruiper@global.co.za |
| Landboupert | Isando | | | 011 966 9200 | | info@landboupert.com |
| Leo Hydraulics | | | | 011 976 1941 | | admin1@leohydraulics.co.za |
| LiuGong Machinery SA | JHB | Parts | | 011 979 3636 | | admin.za@burgersafrica.com |
| LNE Agri Earth (Pty) Ltd | JHB | Sales | | | 083 327 3237 | LNE@LNE-AgriEarth.com |
| LPM Procurement | Germiston | Office | Linda Patricio | 011 776 9160 | 083 637 7122 | info@lpmprocurement.co.za |
| Machinery Contractors | Brits | | Wayne | 012 250 3534 | | wayne@machinerycontractors.co.za |
| Mae Equipment | Witbank | Sales | Thomas Mittag | | 072 545 6223 | info@mae-equipment.com |
| Mafika Engineering | JHB | | | 011 334 1120 | | info@mafika.co.za |
| Marange Plant & Mining | Bloemfontein | | Maryke | 053 841 0415 | 082 296 9810 | maryke@marange.co.za |
| Marsay Equipment | Johannesburg | | Tim Marsay | 011 781 7410 | 083 654 4248 | tim@marsayequip.co.za |
| Masslift Africa Mitsubishi Forklifts Dbn | | Product Support/Spares | Brandon | 031 700 8480 | 078 697 6161 | Brandon@mlift.co.za |
| McKenzie Plant | Sales | Richmond/KZN | Stuart McKenzie | 033 212 2181 | 082 558 7901 | sjm@mckenzieplant.co.za |
| MHS Plant | JHB | Sales | Conrad | 010 500 6193 | 082 781 9481 | conrad@mhsplant.com |
| Midplant Services | JHB | Sales | Kellas | 011 967 0055/60 | 083 675 1385 | sales@midplant.com |
| Midplant Services | JHB | Sales | Jeff | 011 967 0055/60 | 083 657 6123 | sales@midplant.com |
| Midplant Services | JHB | Sales | Lee | 011 967 0055/60 | 083 459 1695 | sales@midplant.com |
| Milltech Engineering | | | Neil | 011 421 7821 | 083 460 6510 | neil@milltech-eng.com |
| Multi One Evolution | Benoni | | Lofty Van Wyk | | 082 888 8899 | info@multi-one.co.za |
| Mzantsi Transmissions | Johannesburg | Sales | Darryl Cilliers | 011 868 5130 | 071 684 5784 | info@gearboxes.me |
| N12 Truck Yard | Delmas – Mpumalanga | | | | 013 661 1039 | sales@n12truckyard.co.za |
| Nduna Spares | Steelport | | Natasha Reynders | 013 230 3852 | | ndunaspar@gmail.com |
| New Beginnings Designs | JHB | | Suken | 011 791 4120 | 082 923 7987 | suken@nbdesigns.co.za |
| NUCO Auctioneers | Dooringkloof East Pretoria | | Jaco De Jager | | 011 206 8963 | jaco@nucoauctioneers.com |
| One Stop Procurement | Benoni | | Roger Melenas | 011 420 1003 | 079 493 4486 | roger@onesp.co.za |
| P&R Earthmoving | JHB | Sales | Scott | 010 823 6385 | | scott@prearthmoving.com |
| P&R Earthmoving | JHB | Sales | Grant | 010 823 8821 | | grant@prearthmoving.com |
| P&R Earthmoving | JHB | Sales | Ladis | 010 823 7322 | | ladislas.l@pandearthmoving.com |
| P&R Earthmoving | JHB | Sales | Greg | 010 823 6276 | | greg@prearthmoving.com |
| Pacific Construction Equipment | | Fairleads Benoni | Mark | 011 453 1567 | 082 441 4587 | markivan@mweb.co.za |
| Paramount Tracks | JHB | Sales | | 010 007 3258 | 082 894 5547 | sales@paramounttracks.com |
| Paul Heslop Plant Services | | | Paul Heslop | 086 111 5422 | 074 101 8239 | paul@pixie.co.za |
| PEX Hydraulics | Cape Town | Sales | Nick Kotzee | 021 556 3232 | | nick@pex.co.za |
| PEX Hydraulics | Johannesburg | Sales | Mark Dickason | 011 882 8413 | | mark@pex.co.za |
| Pex Hydraulic Repairs | KZN | Sales | Priscilla Shanker | 031 705 5050 | 084 429 8654 | priscilla@pexkzn.co.za |
| Pilot Crushtec | JHB | | | 011 842 5600 | | sales@pilotcrushtec.co.za |
| Plant Finder | PE | | Shawn Michell | 041 379 1717 | 082 568 4033 | shawn@plantfinder.co.za |
| Powertrans Rebuild Centre | Isithebe | | Ricky Naidoo | 032 459 5700 | 082 555 4925 | info@powertrans.co.za |
| Power Transmissions Technology | Benoni | | William | 011 022 8570 | | info@pttech.co.za |
| Primeplant | JHB | | Francois | 011 979 4853 | 066 489 4891 | spares@primeplant.co.za |
| Queensburgh Plant Sales | JHB | Used Sales | Wikus | 011 964 1631 | 083 235 5665 | qpsales@mweb.co.za |
| Queensburgh Plant Sales | JHB | New Sales | Albert | 011 964 1467 | 082 652 4907 | qpsales@mweb.co.za |
| R21 Trucks | Centurion | Sales Manager | Mark Noble | 011 206 8958 | 082 226 2220 | mark@r21trucks.co.za |
| Ramm Parts | Witbank | | Adriaan | 076 127 2977 | | adriaan@rammparts.co.za |
| Ramm Parts | Witbank | | Mark | 072 530 7373 | | marc@rammparts.co.za |
| Ramm Parts | Witbank | | Rodney | 073 103 9582 | | |
| Randle Parts | KZN | Sales | Stan | | 083 653 4270 | |
| Randle Parts | KZN | Sales | Justin | | 083 639 1982 | justin.cope@randleparts.co.za |
| Randle Parts | KZN | Sales | Geoff | | 074 843 5298 | |
| Rankin Training | DBN | | Marcel | 031 702 8447 | 082 909 9070 | marcel@rankintraining.co.za |
| Reef Fuel Injection Services | JHB | Manager | Warren Hauser | 011 873 2354 | | warren@reeffuel.co.za |
| Rent a Dozer | Marble Hall | Owner | Theodor Kleynhans | 013 261 1746 | 083 459 5593 | admin@rentadozer.co.za |
| Replacement Spares Unltd. / RSU | Pretoria | | Sales Paul Pelsner | 012 803 8714 | | paul@rsu.co.za |
| Rham Equipment | Olifontfontein | | Michael Combrink | 011 203 7900 | | info@rham.co.za |
| Rhino Excavator Hammers | JHB | | Paul | 086 111 5422 | 074 101 8239 | sales@rhinohammers.co.za |
| Rhino Excavator Hammers | JHB | | Clive | (011)397 3327 | 071 670 8707 | sales@rhinohammers.co.za |
| Rocktech Earthmoving Wearparts | JHB | Manager | Derek Swift | 011 793 6838 | 082 561 4682 | derek@rocktech.co.za |
| Roger's Undercarriage | JHB | | | 011 964 2695 | 083 974 5851 | rogers.uc@mweb.co.za |
| Ruspet Exhausts | JHB | | Russell | 011 827 2824 | 083 448 7669 | russell@ruspet.co.za |
| Scotty's Plant Hire | Pinetown | | Ashley Scott | 031 700 8000 | | scottys.plant@mweb.co.za |
| Scotty's Plant Hire | Pietermaritzburg | | Ashley Scott | 033 386 1653/14 | | scottysprmbales@mweb.co.za |
| Sclanders Mech Natal | | Sales | Ivan Kaisten | 031 700 8083 | 083 653 3724 | ivan@schlandermech.co.za |
| SEM | JHB | Parts | Barry Fang | | 072 399 9817 | bm@semrsa.co.za |
| SEM | JHB | Parts | Saaj | | 061 564 1167 | parts1@semrsa.co.za |
| Sew's Plant & Civils | KZN | | Sunash | 031 507 2491 | 082 284 5082 | info@sews.co.za |
| Shin Li Trading | Johannesburg | | | 011 396 1081/87 | 079 872 0465 | sales@shinlitrading.co.za |

Quick Reference

| COMPANY | BRANCH | DESIGNATION | CONTACT | TEL NO | A/H-CELL | EMAIL |
|-----------------------------------|---------------|----------------------------|---------------------|--------------------|--------------|-----------------------------------|
| Shonakhona Logistics | | | | 032 943 3428 | 073 188 2004 | |
| Sino Plant | Gauteng | Sales Manager | Mark Noble | 011 206 8958 | 082 226 2220 | mark@sinoplant.co.za |
| Spec-Cast Wear Parts | JHB | Sales Manager | Shelton Holdsworth | 011 396 1713 | 063 733 4626 | shelton@spec-cast.co.za |
| Spec-Cast Wear Parts | Middelburg | Sales | Herman Bezuidenhout | 013 813 1413 | 072 187 6943 | herman@spec-cast.co.za |
| Spec-Cast Wear Parts | Kathu, N/Cape | Sales | Ilse van Rooi | 053 010 1304 | 067 414 8832 | northerncape@spec-cast.co.za |
| Sintech | JHB | Sales | Jacob Nkabinde | 011 823 2359 | | sales@sintech.co.za |
| SparePower | JHB | Parts Sales | | 011 845 4184 | 082 457 2804 | terry@sparepower.co.za |
| STM Mining | JHB | Sales | Barney v Rooyen | 011 894 6192 | 072 086 6163 | barney@stmmining.co.za |
| The CAT Rental Store / Barloworld | | Durban | | (031)569 8500 | 082 909 9188 | mnicolia@barloworld-equipment.com |
| The Seat Connection | JHB | Sales | Lydia/Graham | 011 452 6802/6814 | | info@seatconnection.co.za |
| TJB Earthmoving Parts Buying | JHB | | Brad | +27 71 154 3786 | | brad@tjbearthmoving.co.za |
| Tommy's Auto Parts | Newcastle | | Ahmed | 034 375 8111 | 072 889 2581 | exportintl@aol.com |
| Tractor and Grader Supplies | JHB | Sales | Jeannine | 011 392 7533 | | jeannine@tags.co.za |
| Tractor and Grader Supplies | Witbank | Sales | Francois | 087 943 8661 | | francois@tags.co.za |
| Tractor and Grader Supplies | Durban | Sales | Gary | 031 700 8250 | | gary@tags.co.za |
| Tractor and Grader Supplies | Cape Town | Sales | Morne | 021 946 1561 | | morne@tags.co.za |
| Tractor and Grader Supplies | Swaziland | Sales | Tiago | +268 2 518 4548 | | tiago@tags.co.za |
| Tractor and Grader Supplies | Namibia | Sales | Handre | +264 61 264710/1/2 | | handre@powerpartsnamibia.co.za |
| Transand | | | Fran cois Gerber | 044 695 0105 | 082 454 0934 | charlesjnr@transand.net |
| Trysome cc | JHB | Supplies | Jaco | (011)823 5650 | | jaco.vandermerwe@trysome.cc |
| TTC Engineering & Hydraulics | JHB | Owner | Tino | 011 845 2837 | 082 822 4676 | tino@ttcenghyd.co.za |
| TTC Engineering & Hydraulics | JHB | Admin | Chanel | 011 845 2837 | | admin@ttcenghyd.co.za |
| Turboworks | Centurian | Sales | | 012 653 7507 | 082 824 8037 | sales@turboworks.co.za |
| Unity | JHB | Sales | | 011 845 1630 | 082 457 0221 | unitysalesandservices@gmail.com |
| VR Diesel & Turbo | | | Wayne | 013 246 1003 | 083 310 9235 | wayne@vrdiesel.net |
| Vendal Civils | JHB | | Anton | 011 801 4911/2 | 082 923 5397 | vendels@mweb.co.za |
| Vendel Equipment Sales | JHB | Sales | Jaap | 011 801 4911/2 | 082 892 1327 | associated1@xnet.co.za |
| Vita Plant & Equipment | Brits | Machine Sales & Repairs | Costa Voyiatzakis | 012 252 2915 | 082 521 7095 | nicholas@vitaplant.co.za |
| Vortex transmissions | JHB | | Johan | 011 452 4430 | 082 333 1005 | vortex@mweb.co.za |
| Vortex transmissions | JHB | | Jan | 011 452 4430 | 082 333 1004 | vortex@mweb.co.za |
| WH Auctioneers | Midrand | Sales | Shannon | 011 574 5700 | 084 520 5000 | info@whauctions.com |
| WH Auctioneers | Midrand | Sales | Mathew | 011 574 5700 | 084 252 5000 | info@whauctions.com |
| WH Auctioneers | Midrand | Sales | Tim | 011 574 5700 | 082 371 1069 | info@whauctions.com |
| WAHA Equipment | Midrand | Sales | Will | 011 574 5728 | 076 037 9516 | will@waha.co.za |
| Wearpact | JHB | Sales | Linda | 011 845 3234 | 083 453 3960 | mwwrp@mweb.co.za |
| Weichai | JHB | Parts | Barry Fang | | 072 399 9817 | bm@semrsa.co.za |
| Wilson Plant | CPT | Sales | Miles Wilson | 021 534 9536 | 082 928 9215 | admin@wilsonplant.co.za |
| Yellow Metal SA | Pretoria | Sales | Pieter Botha | 011 970 1299 | 082 805 8220 | sales@ymsa.co.za |
| ZF Services South Africa | JHB | Sales: Service Parts | Warren Viviers | (011)457 0031 | 082 776 2759 | warren.viviers@zf.com |
| ZF Services South Africa | JHB | Workshop:Off-road division | Christo Uys | (011)457 0091 | | christo.uys@zf.com |

Want Your company listed in our Quick Reference Guide? Please email your company details to janine@earthbroker.co.za





QPS

QUEENSBURGH PLANT SALES

Keep it simple buy quality



**Your friendly supplier of
new and used
earthmoving parts**

**KOMATSU – HITACHI – HYUNDAI
DOOSAN CATERPILLAR – NEW
HOLLAND – TEREX – JCB CASE
CONSTRUCTION – CARRARO
CUMMINS**

**KEEP IT SIMPLE
BUY QUALITY**

**EARTHMOVING
MACHINE PARTS
SALES REPAIRS**

Albert
082-652-4907
albert@qps.africa

Riccardo
061-224-6829
riccardo@qps.africa

Madeline
082-328-9370
madeline@qps.africa

Dave
082-708-7965
dave@qps.africa

Werner
079-740-2088
werner@qps.africa

Wikus
083-235-5665
wikus@qps.africa

WWW.QPS.AFRICA
TEL (011) 964 1631



Un **BELL**ievable savings!

FRICTION DISC

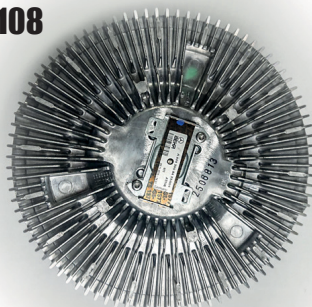
BN021082



• B35/40/50D

VISCOUS HUB

DC222108



• B50D

DIFF HEAD

310068



• B35D

DELUXE WIPER SYSTEM

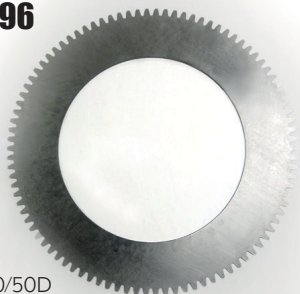
BN010193

• B35/40/50/60E



STATIONARY DISC

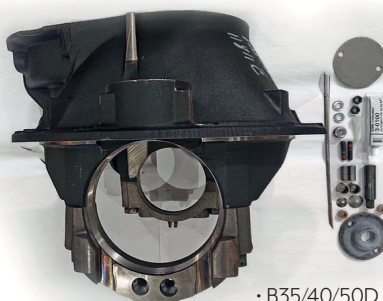
208496



• B35/40/50D

DIFF CARRIER

220638

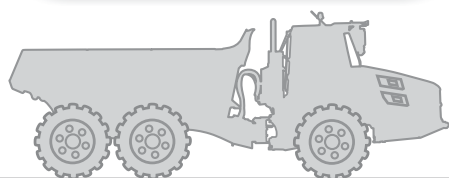


• B35/40/50D

RECHARGEABLE GREASE GUN

228000

• All machines



Whatever your need, Bell has the right parts for you.

FOLLOW US ON



Contact your nearest BELL Customer Support Centre • E-mail: bellparts@bell.co.za
www.bellequipment.com

**Strong Reliable Machines
Strong Reliable Support**

BELL