

your sourcing solution for new & used equipment & machinery

earthbroker

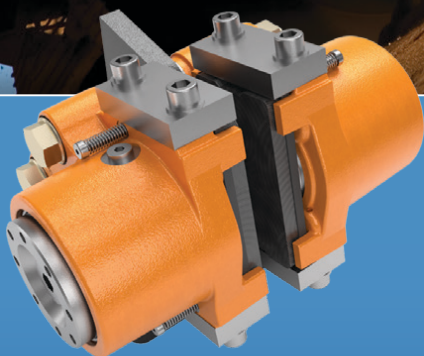
email: janine@earthbroker.co.za web: www.earthbroker.co.za

volume 16 issue 10 October 2020

Sintech is the sole supplier of Svendborg Brakes in South Africa

WE STOP EVERYTHING SAFELY

Sintech



Hydraulic Brakes



Hydraulic Power Units



Hi-tech intelligent SOBO

WWW.SINTECH.CO.ZA

Svendborg Brakes
Altra Industrial Motion

Industrial Clutch
Altra Industrial Motion

Wichita Clutch
Altra Industrial Motion

Twiflex
Altra Industrial Motion

CARLISLE

GOETZE
MECHANICAL FACE SEALS
Rock Seals • For Pure Efficiency

FMC

PTTECH
POWER TRANSMISSION



JHB: +27 (0)11 823 2359
DUR: +27 (0)31 569 2695 /7



URW 547 (4 ton) Crane
Assists set up of
"The Nelson Mandela Exhibition"
in Sandton City Shopping Centre.

Our **UNIC** crane is the first ever to operate inside Sandton City Shopping Centre since construction was complete in 1973.

UNIC

SPIDER MINI CRANES SOUTH AFRICA

Head Office - 035 787 0679

Bob - 082 570 5781 | bob.uniccranes@bbplant.co.za,

Tara - 079 694 3978 | tara.uniccranes@bbplant.co.za

JHB Office : Sean - 064 754 8419 | sean.uniccranes@bbplant.co.za

DBN Office: Phil on 071 118 7145 | phil.uniccranes@bbplant.co.za

Visit our website at www.bbplant.co.za

RENTALS | SALES | SERVICE

Head Office - 55 Knutzen Street, Empangeni, Kwazulu Natal

Johannesburg Office - 55a Harris Ave, Sebenza, Edenvale

Contact Details

Sales Manager & Editor
Janine Sargeant
083 456 4027

Design / Layout
Dylan McDonald
082 485 3001

Sales Contact
083 456 4027

Electronic Origination & Printing
ROC Media

The Editors welcome articles and
photographs, which will be
considered for publication
on their merit.

Disclaimer: The Editors and
Publisher do not necessarily
endorse any views or
statements made
by contributors.

Janine Sargeant
083 456 4027
(FAX) 086 685 1258
janine@earthbroker.co.za

Physical Address:
Suite 16, Hillcrest Office park
2 Old Main Road, Hillcrest, 3610

Postal Address:
P.O. Box 2484,
Hillcrest,
3650

Banking Details:
Earthbroker
First National Bank
Hillcrest
Code: 223726
Account No.: 62295649308



Audit Bureau of Circulations
of South Africa

We are ABC accredited

Pamms Certificate no:
2A8DD9F60574FFC2A4EEEE01A



Manufacturer's names, numbers
& descriptions are used for
reference purposes only & it is
not implied that any part listed
is the product of the manufacturers.



82

BABCOCK

The green standard for material
handlers



12

Centrax SA

A generational business that has
stood the test of time.



83

Cummins

Five ways to boost the availability of
your mining equipment



84

Into a Gold mine

How South Deep achieved its dramatic
turn-around in 12 months



74

WIRTGEN

Full Depth Recycling

**Industry
News**

Stay up to date with the
latest Industry news

I Contents

Advertisers Index	92-93	Machinery Contractors	77
All Africa Supplies	53	Marsay Equipment	47
Andru Mining	5	McKenzie Plant	15
Amalgamated Plant	22	Mid Plant Services	13
Associated Equipment	49	Mzantsi Transmissions	34
Atlas Masjiene	6		
B & B Plant	2	Nduna Spares	75
BMH Trading International	59	One Stop Procurement	41
Bell Equipment	23,100		
BLC Plant	50	P & R Earthmoving	54
BLC Trucks	51	Paramount Equipment	24
BLC Parts & Components	52	Paramount Tracks	25
Blumaq South Africa	20-21	Plant Finder	60-61
Capital Equipment Parts	66-67	Powertrans	78
Cat ER	44	Power Transmission Technology	71
Centrax	10-11	Prime Plant	17
CTC Plant Company (PTY) Ltd	16		
Dozer Parts	8-9	Queensburgh Plant Sales	99
Dura Sales	38-40		
Earthmoving Machine Sales	80-81	Ramm Parts	45
Earth Mach	69	Rhino Excavator Hammers	4
East Coast Gears	22	Ruspet Exhausts	22
ESP	62-65		
Filter Centre	34	Shin Li Trading	30-31
Force 8	76	Sintech	1,70
Gears for Africa	14	Spec-Cast Engineering	6
Grindright Engineering Services	48	Spec-Cast Wear Parts	36-37
Industrial Plant Solutions	79	STM Mining	56,72-73
ITR Africa	32-33		
Inmine - Inala Mining Services	42-43	TJB Earthmoving	18
KDH Hydraulics	68	Tractor Grader Supplies	28-29
Liugong-Burgers	19	The Seat Connection	22
LNE Agri Earth (Pty) Ltd	55	Transand	35
MAE Equipment	27	Turboworks	58
		Vortex Transmissions	46
		Weichai & SEM Parts	7
		Wearpact	57
		Machine Classifieds	88-91
		Quick Reference	95-98

For Terms & Conditions on our advertising please look at page 94
To receive a free copy of our magazine please email janine@earthbroker.co.za



RHINO

Excavator Hammers cc

Reg. No. 2008/152815/21

SOLE DISTRIBUTORS FOR



IN AFRICA



**Rock Wheel
Cutter**





**WE ALSO HIRE:
EXCAVATORS & TLB'S
WITH THE ABOVE
ATTACHMENTS**



RHINO

Earthmovers cc



BREAKING FOR SPARES

MACHINE & PARTS LISTING (PRICES ON APPLICATION)

- CAT 931C , CAT 330D
- VARIOUS 20 TONNE EXCAVATORS JS200, CAT320D ,CAT330D. (SOLD WITH OR WITHOUT PIPING)
- 14 000 ALUMINUM WATER TANK.

- JAW CRUSHER RUNNING ORDER
- KOMATSU PC400-6 AS A RUNNER OR FOR SPARES.
- 2 X JCB 3CX FOR SPARES.
- KOMATSU DOZER 375-5, 375-3 TRANSMISSION AND ENGINE IN GOOD CONDITION.

+27 74 922 2382 (Office Number) | Cell: 071 670 8707 | 082 887 8636
sales@rhinohammers.co.za | hire@phplant.co.za | cjago@global.co.za
www.rhinohammers.co.za | www.phplant.co.za

CONTACT

Naren Birdju

+27 82 859 0766

Office: 011 395 0200

plantsales@andru.co.za

ANDRU

MINING

"FOR SALE"

"TOGETHER WE DELIVER!"



**BELL B20D 18000 LTR
WATERCART X 3**



**BELL B25D
ADT X 1**



**KOMATSU D65E-12
DOZER X 11**



**KOMATSU GD675-5 / GD655-3
GRADERS X 6**



**KOMATSU PC270 - 7
EXCAVATOR X 1**



**KOMATSU WA480-6 / 430-6
FEL X 4**



**LIEBHERR R974C-SHD/HD
EXCAVATOR X 3**



**LIEBHERR R984C
EXCAVATOR X 3**



**MERCEDES BENZ 3331
ACTROS 12M³ TIPPER X 3**

89 Maple St, Pomona, Kempton Park, 1619
26° 05' 55" S / 28° 15' 50" E



SPEC-CAST ENGINEERING
Trusted to deliver

Bulk Materials Handling Products

Bucket Elevators



Steel Buckets
Suitable for elevating sharp, bulk density materials



HDPE Buckets
Suitable for handling large volumes of all types of grains, feed and most food products



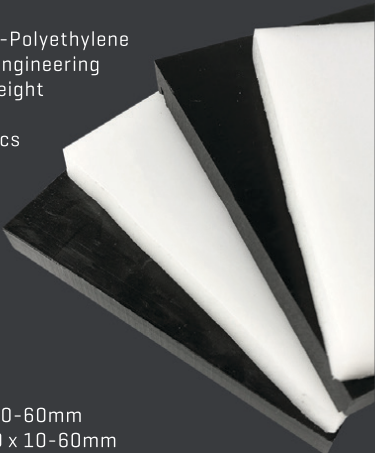
Nylon Buckets
Suitable for high impact & abrasion resistance. Better heat resistance and handling hot, abrasive and sticky materials

HDPE & UHMWPE Sheets

Ultra-High-Molecular-Weight-Polyethylene (UHMWPE) is thermoplastic engineering material, and its molecular weight can reach 4.5 to 9 million. It combines many characteristics such as abrasion-resistance, impact resistance/absorption, chemical corrosion resistance, low temperature resistance and self-lubrication etc.

Available in Black or White

HDPE SHEET: 2000 x 1000 x 10-60mm
UHMWPE SHEET: 3080 x 1220 x 10-60mm



Contact our Bulk Materials Handling Specialist: Brian Jansen
Cell: +27 71 147 6868 | Email: brianj@spec-cast.co.za | Tel: +27 11 396 1713/7 | www.spec-cast.co.za



Corner of Great North & Stanley Road
Brentwood Park AH, Johannesburg
Dewald Hattingh: +27(0) 72 547 2198 +27(0) 11 973 3737



CATERPILLAR 16H
R2 500 000,00 + VAT



CATERPILLAR 416F 4X4
R530 000,00 + VAT



CATERPILLAR 140G
R1 200 000,00 + VAT



CATERPILLAR 924G
R480 000,00 + VAT



CATERPILLAR 120G
R550 000,00 + VAT



CATERPILLAR 320D
R950 000,00 + VAT



CATERPILLAR 277B
R350 000,00 + VAT



MANITOU MT1337
R450 000,00 + VAT

ATLASMASJIENE.CO.ZA | INFO@ATLASMASJIENE.CO.ZA

WEICHAI

WEICHAI & SEM PARTS



LOWEST PRICES GUARANTEED!!



FAW Q8 Oils



A Caterpillar Brand

Our new home is located at
14 Buwbes Rd, Sebenza

Afrikaans: Arno - 065 040 2839

English: Barry - 072 399 9817

Zulu: Sonto - 061 564 1163

bm@semrsa.co.za

DOZER

EARTHMOVING



**CAT 789C
FOR DISMANTLING**



**CAT 777F
FOR DISMANTLING**



**CAT 777D
FOR DISMANTLING**



**CAT 773F
FOR DISMANTLING**



**CAT 773E
FOR DISMANTLING**



**CAT 773D
FOR DISMANTLING**



**CAT 769D
FOR DISMANTLING**



**CAT 769C
FOR DISMANTLING**



**CAT 725
FOR DISMANTLING**



**CAT D11R
FOR DISMANTLING**



**CAT 824G I
FOR DISMANTLING**



**CAT 824G II
FOR DISMANTLING**



**CAT 834H
FOR DISMANTLING**



**CAT 988H
FOR DISMANTLING**



**CAT 992G
FOR DISMANTLING**



**LIEBHERR 9350
FOR DISMANTLING**



**LIEBHERR 9350
FOR DISMANTLING**



**KOMATSU HD785-5
FOR DISMANTLING**



**CAT 992K FINAL DRIVE
REMAN/EXCHANGE**



**CAT D11T TRACK FRAMES
REMAN/EXCHANGE**



DOZER
EARTHMOVING
CAT D10T TRACK FRAMES
REMAN/EXCHANGE



DOZER
EARTHMOVING
LIEBHERR 9350 TRACK FRAMES
REMAN/EXCHANGE



DOZER
EARTHMOVING
LIEBHERR 9350 CAR BODY
REMAN/EXCHANGE



DOZER
EARTHMOVING
LIEBHERR 9350 BOOM
REMAN/EXCHANGE



DOZER
EARTHMOVING
LIEBHERR 9350 STICK
REMAN/EXCHANGE



DOZER
EARTHMOVING
LIEBHERR 9350 TOGGLE
REMAN/EXCHANGE



DOZER
EARTHMOVING
LIEBHERR 9350 LINK
REMAN/EXCHANGE



DOZER
EARTHMOVING
LIEBHERR 9350 IDLER
REMAN/EXCHANGE



DOZER
EARTHMOVING
LIEBHERR 9350 PUMPS
REMAN/EXCHANGE



DOZER
EARTHMOVING
LIEBHERR 9350 SWING DRIVE
REMAN/EXCHANGE



DOZER
EARTHMOVING
LIEBHERR 9350 BUCKETS



DOZER
EARTHMOVING
LIEBHERR 9350 CABIN
REMAN/EXCHANGE



DOZER
EARTHMOVING
CAT 789D/785D CABIN
REMAN/EXCHANGE



DOZER
EARTHMOVING
CAT 777F/773F CABIN
REMAN/EXCHANGE



DOZER
EARTHMOVING
CAT D11T/D10T CABIN
REMAN/EXCHANGE



DOZER
EARTHMOVING
LIEBHERR 9350
FOR SALE



DOZER
EARTHMOVING
CAT 824G I WHEEL DOZER
FOR SALE



DOZER
EARTHMOVING
CAT 824G II WHEEL DOZER
FOR SALE



DOZER
EARTHMOVING
CAT 834H
FOR SALE (IN PROCESS CURRENTLY)



DOZER
EARTHMOVING
CAT 834K WHEEL DOZER
FOR SALE

T +27(0)11 452-1224 M +27(0)11 82 441-2895 E info@dozer.co.za W www.dozer.co.za



www.instagram.com/dozerearth



www.facebook.com/dozerparts

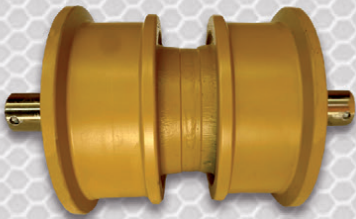


**ON THE RIGHT
TRACK WITH**

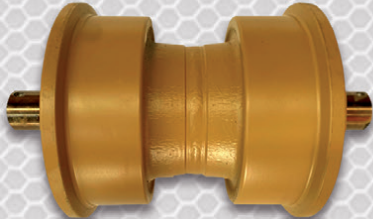


Head Office: Tel: (011) 392 5055 / (011) 392 5056 / Fax: (011) 392 3091
Durban Branch: Tel: 086 123 6872 / Fax: 086 529 4683 / Steve: 083 613 0664

EXPERIENCE THE CENTRAX WORLD CLASS CONVERSION & REBUILD PROCESS
YOUR ONE STOP UNDERCARRIAGE SHOP



**DOUBLE FLANGE
ROLLERS**



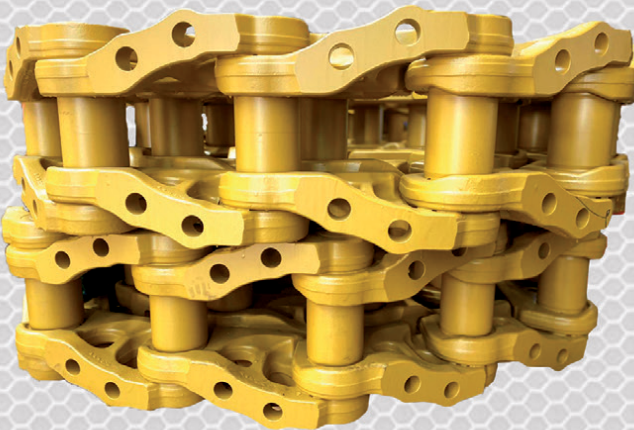
**SINGLE FLANGE
ROLLERS**



IDLERS



GROUSER SHOES



LINK ASSEMBLY'S



SPROCKET SEGMENTS



SPROCKETS

“LET’S DO THIS”

Manufacturers names, numbers and descriptions are used for reference purposes only & is not implied that any parts listed is the product of these manufacturers.



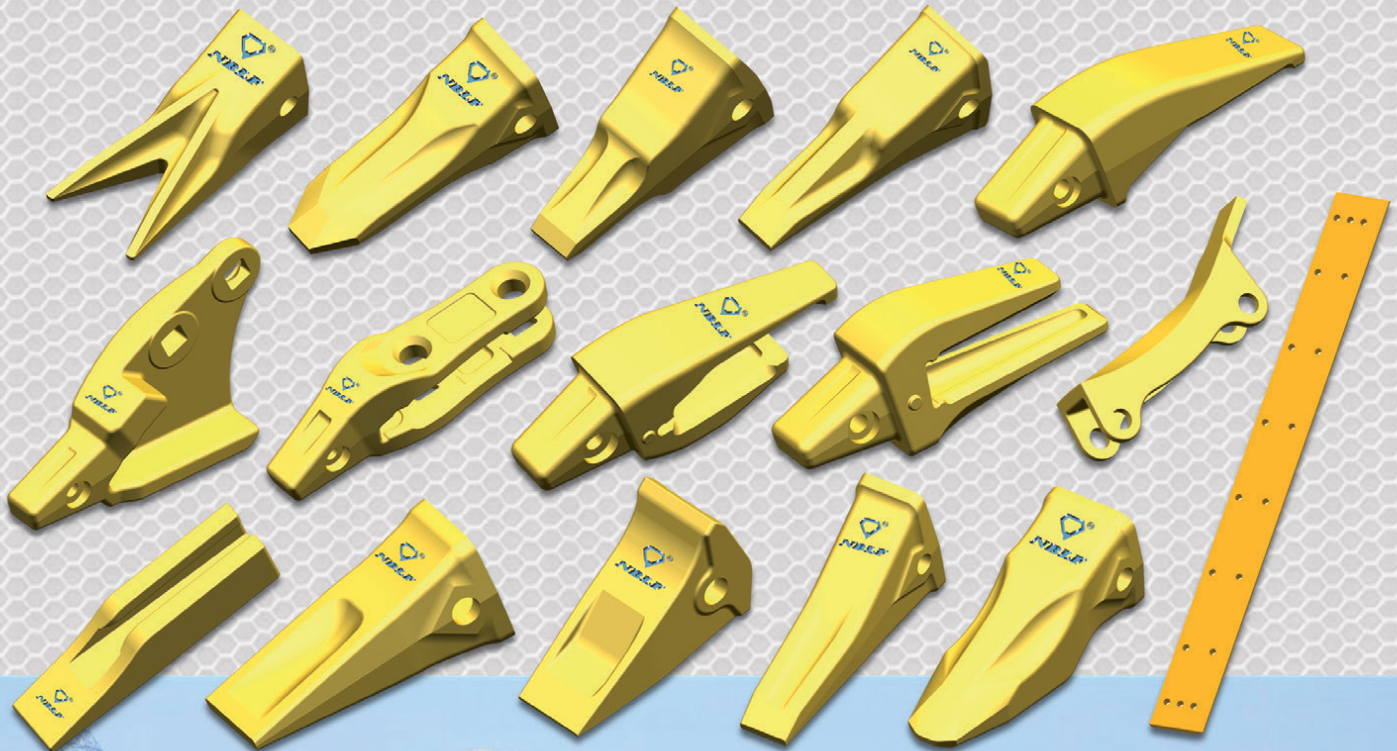
**ON THE RIGHT
TRACK WITH**

CEN TRAX
Since 1974
www.centraxsa.com

Head Office: Tel: (011) 392 5055 / (011) 392 5056 / Fax: (011) 392 3091
Durban Branch: Tel: 086 123 6872 / Fax: 086 529 4683 / Steve: 083 613 0664

EXPERTS IN UNDERCARRIAGE & WEAR PARTS

OUR TEAM OF TRAINED EXPERTS WILL KEEP YOUR EQUIPMENT ON TRACK



**CENTRAX - YOUR MARKET LEADER IN THE SUPPLY OF ALL YOUR BUCKET
PROTECTION AND WEAR PARTS, ASSURING YOU OF PREMIUM COST PER HOUR
PERFORMANCE ACROSS OUR COMPREHENSIVE PRODUCT RANGE**

320C EXTENDED BOOM EXCAVATOR FOR HIRE. CONTACT TREVOR: 083 608 5550

Manufacturers names, numbers and descriptions are used for reference purposes only & is not implied that any parts listed is the product of these manufacturers.



**ON THE RIGHT
TRACK WITH**



A generational business that has stood the test of time.

Centrax is the premier importer of undercarriage and Ground Engaging Tools for your earthmoving construction and mining machinery needs. An industry leader in both product categories with a stellar reputation that has been built over a period of nearly 50 years.

Centrax is a family business opened in 1974 by Franz Arazym, his son Brendan has taken the reigns over time and with more than 25 years experience in the industry he has developed an in depth understanding of the product range and the industry, and is surrounded by a team of well trained vastly experienced professionals. This coupled to world class service and optimum stock levels through an understanding of customer requirement is what has made Centrax the power it is within the industry today.



Franz Arazym

In addition to a comprehensive product range Centrax extends it's offering to the market by means of a highly efficient track work shop that presents the following offerings.

- Remove and refit grouser plates
- Turning of pins and bushes
- Re-stripping of grouser plates
- Lengthening and shortening of chains

The Centrax technical department extends further than that in the form of an idler rebuilding facility that produces unrivalled quality in the industry. In addition to the rebuilding of idlers this facility also offers the following.

- Re-rim sprockets
- Re-shell rollers



Brendan Arazym

The company also prides itself on the comprehensive range of ground engaging tools it has built up over many years and is most certainly one of the market leaders in this category. An industry champion in the bucket prtotection, grader blade, bull dozer cutting edge, underlay, overlay and general GET field.

Centrax presents itself to a broad customer base and has the logistics, services, product range and people to provide undercarriage and wear part solutions across the board right up to the blue chip mining sector. With Branches in Johannesburg and Pinetown as well as a strategically placed dealer network, Centrax is in a position to provide the industry with cost effective solutions.

Having been established in 1974, Centrax is the longest standing operator in the industry and is truly a story of generational excellence, that has stood the test of time.

Head Office:

Tel: (011) 392 5055
(011) 392 5056

Fax: (011) 392 3091

Durban Branch:

Tel: 086 123 6872
Fax: 086 529 4683

AT CENTRAX WE CAN!



*All manufacturers names, numbers, symbols and pictures are for reference only. It does not imply that any of the parts are the product of these manufacturers.



FINAL DRIVES IN STOCK NOW

CAT 320D, CAT 329D & CAT330D
SUMITOMO SH200, SH210, SH300-3
BELL KATO HDS00, HDS20, HD1023
CASE CX210, CX240
DOOSAN, VOLVO & HYUNDAI

CONTACT US NOW!!!

SWING MOTORS & REDUCTIONS

AVAILABLE NOW

SUMITOMO
SH200, SH210, SH300-3

CASE
CX210, CX240

BELL KATO
HDS00, HDS20, HD1023

HITACHI, HYUNDAI,
DOOSAN & VOLVO

BREAKER CHISELS

AVAILABLE NOW

RHB320 V-WEDGE

RHB325 V-WEDGE

EHB30 V-WEDGE

RHB325 BLUNT

RHB320 BLUNT



TEL: +27(0)11 967 0055 | TEL:+27 (0)11 967 0060 | FAX: +27(0)86 606 4597 | SALES@MIDPLANT.COM
ADDRESS: 273 3RD AVENUE, BREDELL, KEMPTON PARK | WWW.MIDPLANT.COM

YES WE ARE OPEN

We form part of South Africa's essential services to keep our food industry and municipalities going. Keep safe and call if we can assist. 083 657 0522



GFA

Gears for Africa

WE MOVED TO BIGGER PREMISES
145 Lamp Road, Wadeville
Germiston

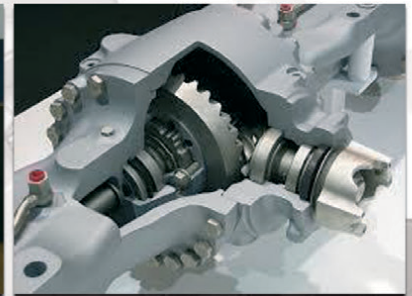
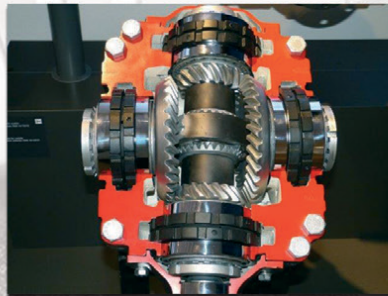
OUR QUALITY COMPARES 100 % TO ANY OEM SPARE MANUFACTURES

MANUFACTURE OF SPIRAL BEVEL GEARS NOW AVAILABLE



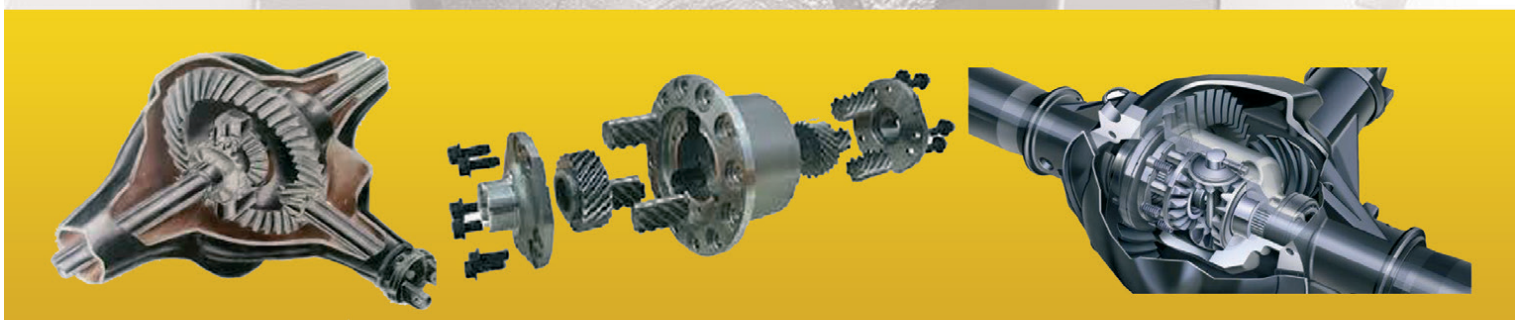
Gears for Africa products include all types of gears, sprockets, splines and related product for industrial and heavy duty equipment and practically all applications related to power drive systems:

- Bevel Gears
- Spur Gears
- Worm Gears
- Helical & Internal Helical Gears
- Crown Gears
- Internal & External Splines.



CROWN WHEEL AND PINION, PLANETARY, SUN AND RING GEARS
FINAL DRIVE GEARS, DIFF HOUSINGS SPIDER CROSS KITS, SPIRAL BEVEL GEARS

FOR THE MINING, RAIL, HEAVY EARTH MOVING, BUILDING,
AND AGRICULTURAL INDUSTRIES



Cape Town Branch
Tel: 021 577 1030
Fax: 021 577 1131

083 657 0522 | carl@gearsforafrica.co.za
www.gearsforafrica.co.za

JHB Branch
Tel: 011 824 2017
Fax: 011 420 3314



BOMAG BW212-3
Smooth drum Roller



1 x HYUNDAI 300LC-9S
Excavator



2 x KOMATSU D51EX-22
Dozer



BELL/KATO HD1430R
8570 Hours



LOWBED
Two axle trailer



KOMATSU WA380-6
F.E.L.



Contact Stuart McKenzie for more details:

Tel: 033 212 2181

Cell: 082 558 7901

Email: sjm@mckenzieplant.co.za

www.mckenzieplanthire.co.za



You can now find us on facebook, go to www.facebook.com/mckenzieplanthire

JCB 3CX PARTS



C.T.C. PLANT COMPANY
SINCE 1992



WE BUY JCB'S

Complete engine rebuild parts, cylinder heads, crankshafts, pistons, gasket kits, transmission parts, axle and diff parts, axle hub parts, cab parts, cab glass, machine cables, hydraulic parts and pumps, pins and bushes, electrical parts & much more.

Transmissions 3 CX, Front & rear axles,
Complete service exchange hubs
Hydraulic cylinders for 3 CX

SERVICE EXCHANGE COMPONENTS:

Saving you time, saving you money,
reducing down time.

444 NT long blocks
444 T long blocks
Available.



FOR SUPERIOR QUALITY PARTS ON ALL MAJOR BRANDS

Cnr. Michigan & Manchester
Streets, Airport Industria,
Cape Town, South Africa

Mark Swanepoel: +27 82 825 6966
Roy Heather: +27 61 421 9184
www.ctcplant.com





FIELD SERVICES NOW AVAILABLE



Primeplant (Pty) Ltd

Tel: 011 979 4853 Fax: 011 396 1653

www.primeplant.co.za



We specialize in the repair & maintenance of **CAT** TLB's



Labour - R380,00 p/h

OPENING SPECIAL!!!!

We know times are tough and we value your support, so our hourly rate is R380,00

Valid until 31 October 2020



SERVICE GUARANTEE

Our qualified Toyota and Ford mechanic promises excellent workmanship and efficiency.



CAR SERVICES
Minor & Major Services

TRUCK SERVICES
Minor & Major Services

BRAKES & TYRES
Brakes & discs
Wheel Alignment & balancing

**AND MUCH MORE...
ALL MODELS WELCOME**

Get in touch • Rikus 066 273 3294 • Kelvin Commercial Park Unit 10, 107 Zuurfontein Road Spartan



LIUGONG

FULL LINE. FULL SUPPORT. FULL SATISFACTION.



Equipment and Spares



www.liugong.co.za - admin.za@burgersafrica.com

BURGERS EQUIPMENT & SPARES SA
JOHANNESBURG - HEAD OFFICE
80 POMONA ROAD
011 979 3636

CAPE TOWN
RUBICON CENTRE, SHIRAZ STR, UNIT 1 & 2
SAXENBURG PARK, BLACKHEATH
021 987 5666

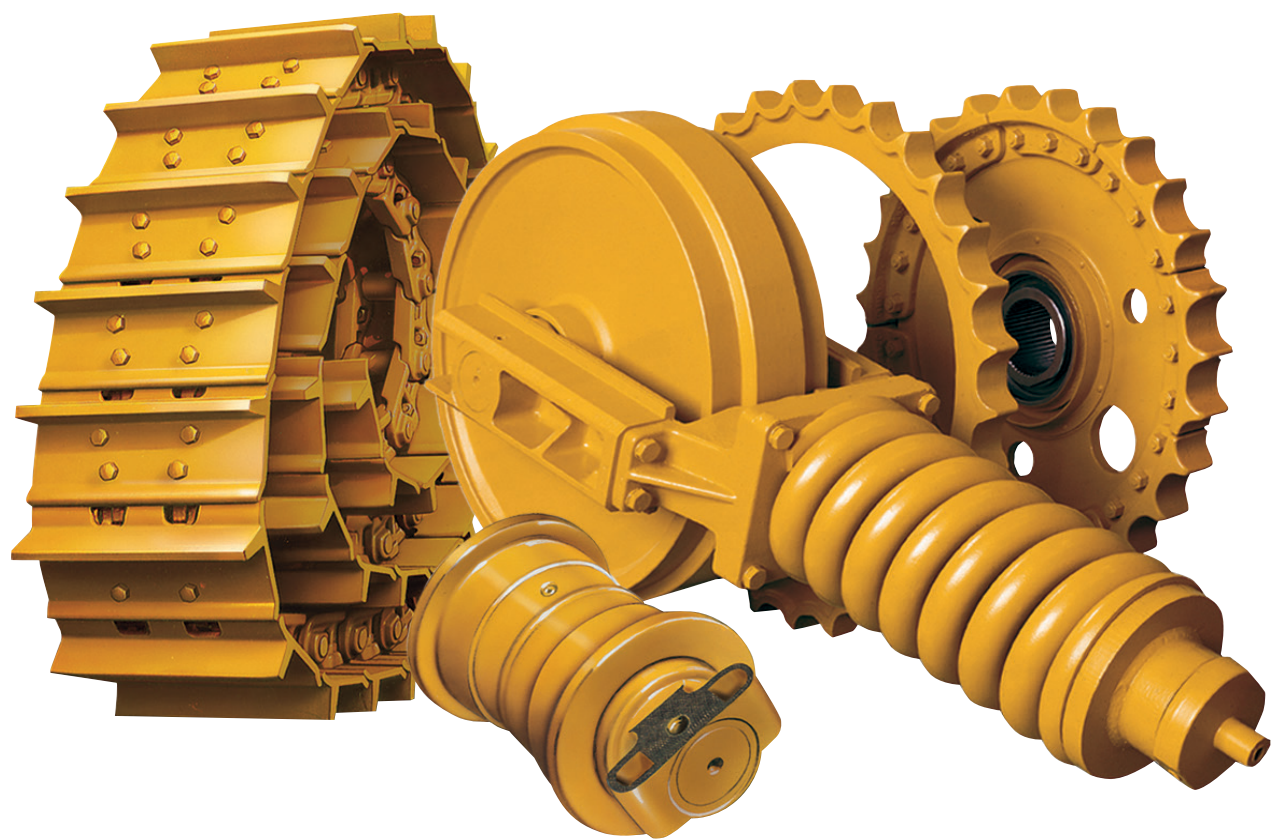
POLOKWANE
C/O VELDSPAAT & ZURICH STREET,
B.A.T WAREHOUSE 4
015 298 8696

DOUGLAS
C/O LOCH ROPER & GIDDY STREET
053 298 1108



www.blumaq.com

Follow us on:



Following our success as **Berco** product distributor in Zambia, Blumaq South Africa has now also been appointed a distributor for this quality product in South Africa.

Blumaq South Africa now also offers **Berco quality undercarriage parts and repairs** from our operation based in Wadeville, Johannesburg.

Our fully serviced Track Undercarriage workshops offers a full service including Turning of Pins & Bushes / Re-stripping of Grouser shoes / Track Link repairs / Idler and Roller rebuilds / Track Frame Rebuilds.

Contact us today for a free on site wear assessment of your undercarriage components.

Contact:
+27 11 966 5092 **Johannesburg**
+26 096 0923 962 **Kitwe**
john.beukes@blumaq.com

**Berco dealer in
Spain, Zambia,
Turkey and
South Africa:**



Caterpillar®, komatsu®, cummins®, volvo® and case® are trade brands registered by their owners and are only used for reference purpose of the application of our spare parts.



www.blumaq.com

Follow us on:



Spare parts suitable for VOLVO

We offer a wide range of items
with immediate delivery for your
VOLVO earthmoving equipment.



Alternative spare parts for Caterpillar

We offer a wide range of items
with immediate delivery for your
CATERPILLAR earthmoving equipment.

**Berco dealer in
Spain, Zambia,
Turkey and
South Africa:**



Contact:

+27 11 966 5092 **Johannesburg**
+26 096 0923 962 **Kitwe**
john.beukes@blumaq.com

Caterpillar®, komatsu®, cummins®, volvo® and case® are trade brands registered by their owners and are only used for reference purpose of the application of our spare parts.

Branches in Spain: Alicante | Almería | Asturias | Barcelona | Galicia | Madrid | Mérida | Ponferrada | Sevilla | Tenerife | Zaragoza
Branches in the world: Chile | United States | France | Portugal | Turkey | China | Russia | Italy | Romania | South Africa | Zambia | Peru



SPM Engineering Services cc

east coast gears

Specialising in earthmoving power transmission rebuilds of:

- Front end loaders
- Final drives
- Drop boxes (transfer case)
- Differentials etc.

MANUFACTURE OF ALL GEARS AND REPAIRS



REPAIR CARRIER HOUSINGS/ HUBS




Tel: 031 701 3500 | Cell: 083 383 4943 | Fax/Email: 086 224 3982
Email: eastcoastgears@gmail.com | 24 Henwood Road, Pinetown, KZN

Ruspet cc t/a

RUSPET EXHAUSTS

We Muffle the Industry



MANUFACTURERS OF EARTHMOVING, TRUCK & GENSET EXHAUSTS



WE HAVE MOVED TO NEW PREMISES

TEL: 011 827 2824
011 827 2826
FAX: 011 827 2850

NO.3 DEKEMA ROAD
284 DEKEMA ROAD
WADEVILLE



www.AmPlant.co.za

SPECIALISED PLANT HIRE



**Asphalt Equipment / Earthmoving Equipment
Milling Machines / Recyclers etc**

Contact - Eddie Simpson
Office : 015 293 1221 ext 304 / Cell : 082 904 7694
Email : simpsons@amplant.co.za

Quality used plant for sale



The seat CONNECTION
Established 1991

011 452 6802
www.seatconnection.co.za
info@seatconnection.co.za
102 8th Avenue, Edenvale, 1609

Follow us on Facebook
facebook.com/TheSeatConnection

Whatsapp call us on
+27 11 452 6802

New seats

Rebuilds

Repairs



ISR 3000/350



GAMEVIEW



ISR 6860/870 NTS



AIR SUSPENSION

Quality service, the secret to our success.

BELL

Care Packages

**Caring for
you, caring for
your machine**

Unlock great customer benefits:

- **Manage service costs**
- **Reduced pricing**
- **Flexible packages**
- **Multiple payment options**
- **Available across our whole machine range**

Contact your
nearest BELL
Customer
Care Service
Centre for
more info



FOLLOW US ON



E-mail: bellparts@bellequipment.com • www.bellequipment.com

PARAMOUNT EQUIPMENT

We are level 1 B-BBEE company with a National Footprint and SADC reach

We are a diversified company with extended offerings in the Manufacture and Supply of Machines for the mining and related industry.

We have been trading since 2013. We offer Professional Engineering Services to industry. We strive for innovation and utilize the best material available in the market and offer the best fit solutions for our customers. Understanding our customer requirements is important. We source and provide them with best engineering solutions that are suitable for their operations. Paramount has recently partnered with the manufacturer, Revathi Equipment Limited (REL), an India based company to service the African continent. Paramount Equipment is the Authorized REL Dealer and Distributor

INTRODUCING:



**AUTONOMOUS
MINING THE
WAY FORWARD**



REL (India) designs and builds a varied range of blast hole drills for the mining and construction industry, incepted in the year 1977 as Revathi CP Equipment limited the Indian Unit of Chicago Pneumatics USA. Since its inception REL has manufactured more than 2000 drills of different capacities, delivering quality holes drilled safely and accurately at the lowest cost.

Our commitment to continuous improvement and innovation drives our ongoing and growing African presence. Please feel free to contact us for more information about our industry-leading products and services.

Your Partner in Mining Equipment Solutions

Gauteng
32 Van Buuren Road
Hans Merensky Office Park
Bedfordview, JHB
Tel: 010 007 3258

Mpumalanga
2 Watt Street
Industrial Area
Middelburg
Tel: 010 007 3109

Northern Cape
Rietbok Street, Office 5
NS&R Building, Kathu
Tel: 082 902 6376 /
072 849 6970

Botswana
Plot 454
Jwaneng
Tel: 00 27 10 007 3258 /
+267 71 968 840



Contact us today on sales@paramounttracks.com or visit us online at www.paramounttracks.com

Proud partner of:





Paramount Tracks

Bedfordview
Head Office
32 Van Buuren Rd
Hans Merensky Office Park
Tel: 010 007 3258

Middelburg
2 Watt Street • Industrial Area
Middelburg
Mpumalanga
Tel: 010 007 3109

Northern Cape
Rietbok Street • Office 5
NS&K Building • Kathu
Tel: 082 902 6376
Tel: 072 849 6970

Botswana (Pty) Ltd
Plot 454
Jwaneng
Tel: 00 27 10 007 3258
Tel: +267 71 968 840

Postal Address: South Africa
P.O.Box 11735 • Aerorand
1070 • South Africa

Postal Address: Botswana
P.O.Box 2233 • Jwaneng
Botswana



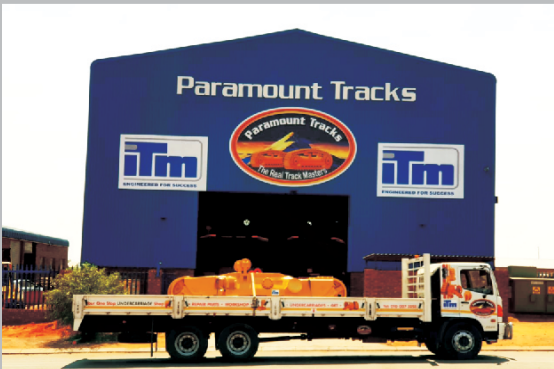
Email: sales@paramounttracks.com
Website: www.paramounttracks.com

Paramount Tracks is a diversified trading company that provides professional engineering services to the mining, plant and construction industries. We are a 100% black owned company and have presence in Johannesburg, Middelburg, Limpopo, Northern Cape and Botswana. We offer specialised services pertaining to the supply of all types of earthmoving undercarriage, GET, along with offering a repair solution for all bucket repairs, bowels, blade repairs, track frames etc.

We have the infrastructure to service large mining and construction companies. We supply a vast range of undercarriage that is suitable for all types of drill rigs and crawler equipment, along with wear parts that are suitable for most GET applications. We own a Track Workshop and Engineering Facility in Middelburg, Mpumalanga region & have developed strong relationships with the European undercarriage manufacturer ITM which is located in Italy. We currently service high end corporate clients in South Africa and have been appointed as the official ITM distributor for South Africa and Botswana through our Paramount Tracks Botswana entity. Paramount Tracks has been recognised as the official dealer of the Combi Wear Parts Ground Engaging Tools Range for South Africa who specialises in the manufacturing of this Swedish wear parts range and aims to offer our customers a premium product. We are the appointed Hardox Wearparts Centre in Middelburg, who is a member of SSAB and offer the following services:

- Cutting • Welding • Machining • Bending • Post-treatment • Perforation etc.

We aim to provide high productivity, along with low maintenance costs which is the core business for a Hardox Wearparts Centre.



THE OEM ALTERNATIVE

Our Vision

To be a regionally recognised professional engineering and technical services company dedicated to providing value added services to customers, from an engineering and supply of new undercarriage components perspective.. Paramount Tracks values are built on dedication, quality workmanship and excellent customer services that are based on sound engineering principles along with maintaining a safe and healthy working environment.

Our Mission

We undertake to uphold the following principles:
Quality parts and services
Develop and empower the community we operate within
To work to the highest quality standards possible
Shrive for continuous improvement

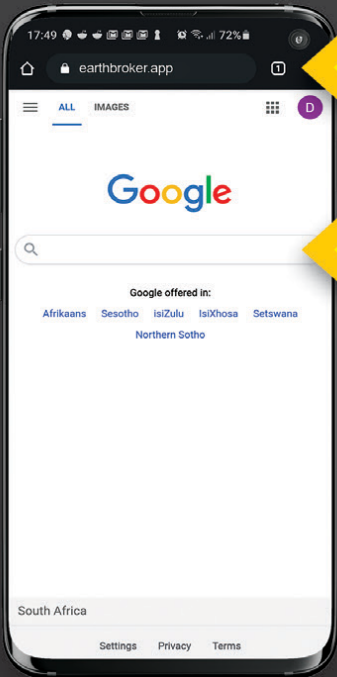
www.paramounttracks.com

earthbroker^{publication}

Earthbroker has launched an app allowing you access to our Quick reference & our digital magazine! See below on how you can download it or use the link: <https://earthbroker.app>

How to download our app

FREE FOR ADVERTISERS | APP FOR MOBILE USE ONLY



✓ Enter 'earthbroker.app' here

1 Open Google / Safari on your mobile phone.

✗ Not in search

Access to our **Quick Reference** and our latest eMag at a push of a button
FREE DOWNLOAD

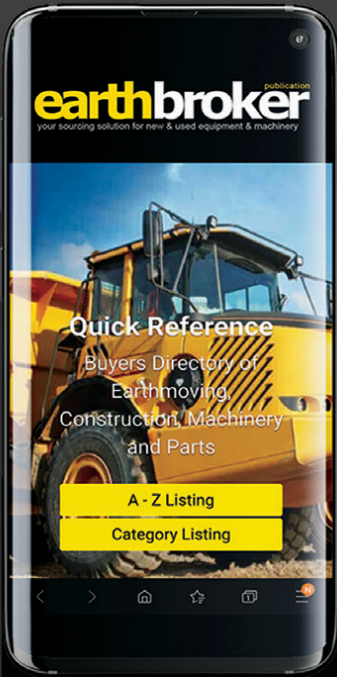
2 Follow prompts to add to home screen and allow notifications if you would like.

Now follow the instructions below on how to use our app once you have saved a shortcut on the home screen.



STEP 1

Click the shortcut once the app has downloaded



STEP 2

Choose A - Z or Category Listing



STEP 3

From here you can call the company directly, email and get directions

For info on how to advertise and get your company listed please contact Janine - 083 456 4027

THOMAS MITTAG
Cell: +27 72 545 6223
Mail: info@mae-equipment.com

MAE Equipment
Witbank/Riverside
(Yard)

www.mae-equipment.com

MAE EQUIPMENT

CAT 349DL



2015 model
low hours / import unit
Call for Price

CAT 390DL-ME



2014 model
10.800h
Call for Price

DM30 DRILL RIG



2008 model
16.500h
Call for Price

ATLAS DM30 DRILL RIG



2012 model
low hours
Call for Price

SANDVIK DP1500 PANTERA



2012 model
low hours
4 units available

ATLAS-COPCO D65 DRILLS



EPIROC D65 FLEXIROC & SMARTROC
Drills available / **Call for Details**

KOMATSU D155AX-7



2013 model
refurbished / imported EU
Call for Price

KOMATSU D275 DOZER



2012 model
5.700h / new undercarriage
Call for Price

D8T DOZER



2011 model
low hours / import unit
ZAR 3.700.000

CAT D9R



2013 model
low hours / new serviced
Call for Price

CAT 773F



2010 model
1 unit available
Call for Price - Finance Option

CAT773F WATERBOWSER



2008 model
Call for Price

VOLVO A30D



2008 model
conversion to waterbowser
ZAR 1.550.000

WE BUY ALL KINDS OF EARTHMOVING, CONSTRUCTION OR MINING MACHINERY

WE PAY CASH WITHIN 24 HOURS

PLEASE CONTACT OR SEND OFFERS TO info@mae-equipment.com

„Your Partner for new & used Machinery and Equipment.“

www.mae-equipment.com



A Part of  Torre Industries

GROUND ENGAGING BUCKET TOOLS



Find Quality Ground Engaging Bucket Tools at
Tractor & Grader Supplies



www.tags.co.za

TGS – YOUR FIRST CHOICE SUPPLIER

To ensure that your ground engaging machines are offering the ultimate return on your investment, you must ensure that you are making use of the correct ground engaging tool for your bucket.

By making use of the right bucket teeth, you can protect the actual bucket of your equipment and lengthen overall lifespan of the machine, while reducing maintenance costs and efforts.

With the right ground engaging bucket tools, you can expect exceptional results with specific projects. While you will be provided with teeth for your bucket when you first purchase your ground engaging and excavation equipment, these will need to be replaced during the machine's lifespan.

While each brand and model of excavator or ground engaging machinery is different and comes with its own selection of bucket teeth, the following are typical and standard options available on the market:

- **Long bucket teeth** – these are used for most general excavation projects. They are considered the “all-rounder” of bucket teeth.
- **Wide bucket teeth** – these work efficiently, being able to clear a wide floor area with minimal spillage.
- **Heavy duty long teeth** – these offer greater strength and an impressive wear life. They are typically used for general excavation projects on large machines.
- **Short bucket teeth** – these are ideal for use when working with rock. They are extremely strong and make high-impact pry-out work simple.
- **Heavy duty abrasion bucket teeth** – these are used for sand and gravel.

• **Penetration bucket teeth** – these are typically self-sharpening and used for breaking up densely compacted material.

• **Rock Chisel teeth** – these are heavy duty long tips ideal for high impact and high abrasion applications such as granite additional length and wear material in the body helps retain the chisel shape throughout tip life.

How ground engaging bucket teeth are manufactured will typically determine just how durable and long lasting they are. Bucket teeth are designed to be wear resistant, but this doesn't mean that they will never need replacing.

It is important to have a maintenance schedule in place to ensure that the condition and longevity of the bucket teeth is always known and understood.

Leaving the replacement of worn ground engaging bucket teeth for too long can result in damage to the adaptor shaft, which translates to very expensive repairs in the future.

It is essential that you take the time to invest in top-quality ground engaging bucket tools.

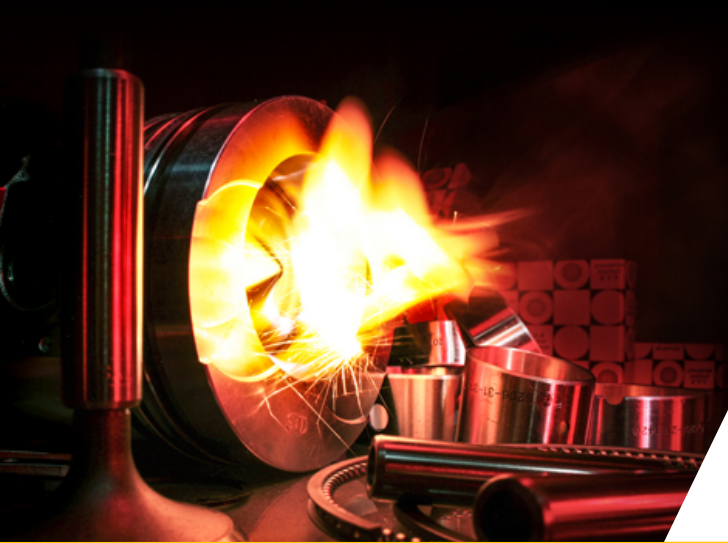
The initial spend will certainly be worth it in the long run. In fact; the greater the quality of the ground engaging equipment, the longer the expected lifespan is.

If you are shopping around for the best quality ground engaging bucket tools, take the time to get in touch with us at **Tractor & Grader Supplies**. We are available to discuss your needs via email or telephone, and encourage you to get in touch with us today.

+27 10 001 9200 / +27 11 392 7533

www.tags.co.za or email: info@tags.co.





SHIN LI
TRADING



*We Specialise in
Japanese & Korean
Earthmoving Spares*

ENGINE SPARES

Liner Kits, Gasket Kits, Valves & Guides,
Water Pumps, Oil Pumps, Crank & Cam Shafts,
Engine Bearings & Bushings



Mitsubishi
Komatsu
Doosan
Nissan
Isuzu
Hino

HYDRAULIC PARTS

Kawasaki Pumps

New and Complete



Final Drives

20 Ton Excavator
Final Drive Parts
& Complete Units



Komatsu Gear Pumps

Transmission Pumps
Steering Pumps
Main Pumps



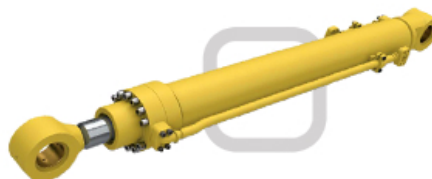
Kawasaki Rotating Groups

K3V and K5V Series
Inner Parts
Rotating Groups
Seal Kits



Komatsu Cylinders

Complete Cylinders
Seal Kits



WWW.SHINLITRADING.CO.ZA

Email:

sales@shinlitrading.co.za (Chris)
sales2@shinlitrading.co.za (Wimpie)
sales3@shinlitrading.co.za (Martin)
sales4@shinlitrading.co.za
sales5@shinlitrading.co.za (Steven)

Address:

67 High Road
Bredell A/H
Kempton Park

Tell:

011 396 1081
011 552 5900 /1/2

Fax:

086 666 2537



Working hard, so you don't have to.

WWW.SHINLITRADING.CO.ZA

UNDERCARRIAGE

Track Links



Sprockets



Idlers



Track & Carrier



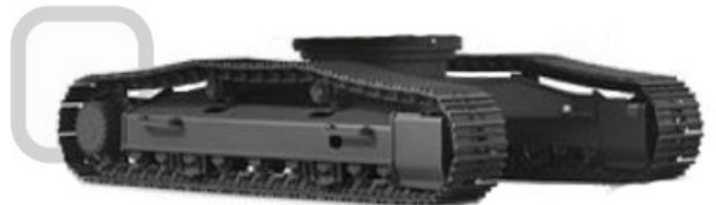
Rollers



Track Plates

Bolts & Nuts

**Genuine Hyundai
20 Ton Track Frames**



FOR SALE !

Address: 67 High Road
Bredell A/H
Kempton Park
Tell: 011 396 1081
011 552 5900 /1/2
Fax: 086 666 2537

Scan the QR Code
to see our website:



**SHIN LI
TRADING** ©



ITR AFRICA

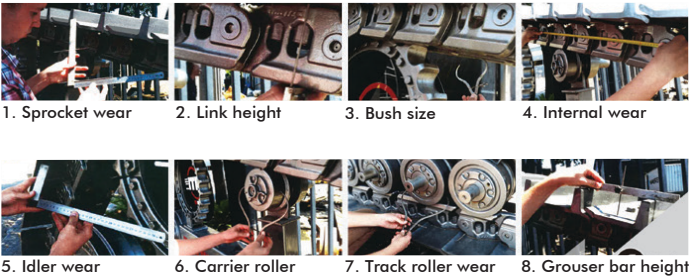
UNDERCARRIAGE MEASURING & WORKSHOPS



Undercarriage

The ITR undercarriage line includes chains, shoes, rollers, sprockets, idlers and segments manufactured within the group’s own production facilities. In addition to standard excavator and dozer applications, ITR undercarriage also covers asphalt road paving, drilling and logging machines. ITR’s flexible production and design expertise also allow for “tailor-made” products to suit any specialised application.

The ITR mini and compact undercarriage line also includes a strong selection of rubber tracks, bolt-on and clip-on rubber pads, rubber and polyuterane vulcanised shoes and city-pads (road liners).



1. Sprocket wear 2. Link height 3. Bush size 4. Internal wear
5. Idler wear 6. Carrier roller 7. Track roller wear 8. Grouser bar height

Undercarriage Measuring

ITR offers a complete undercarriage measuring service that provides a full analysis with recommendations, giving you the benefit of reducing cost per hour through preventative and scheduled maintenance.

Contact your nearest ITR branch today to schedule your appointment.

Undercarriage Workshops

ITR offers Undercarriage Repair, Maintenance and Rebuild Services out of our Service Centres in South Africa and Zambia. Services include remove and refit shoes, turn pins and bushes, re-strip grouser shoes, rebuild idlers, fit new pins and bushes and trackframe repairs.



Johannesburg
Tel: +27 (11) 614 0070
sales@itrafrica.com

Kathu
Tel: +27 (53) 723 2245
kathu@itrafrica.com

Cape Town
Tel: +27 (21) 905 7340
capetown@itrafrica.com

Pinetown
Tel: +27 (31) 941 1133
pinetown@itrafrica.com

Port Elizabeth
Tel: +27 (41) 451 2222
portelizabeth@itrafrica.com

Middelburg
Tel: +27 (13) 590 5614
middelburg@itrafrica.com

East London
Tel: +27 (43) 748 3541
eastlondon@itrafrica.com

Bloemfontein
Tel: +27 (51) 011 5620
bloemfontein@itrafrica.com

Namibia
Tel: +264 (83) 331 5160
namibia@itrafrica.com

Zambia
Tel: +260 (212) 213 867
zambia@itrafrica.com



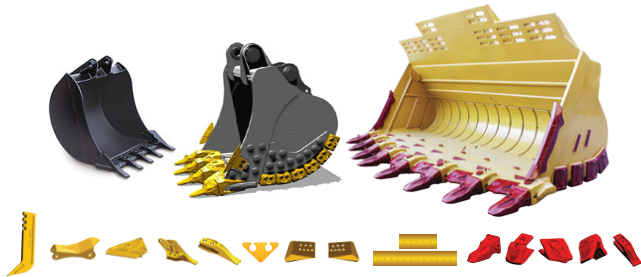
THE FIRST CHOICE EARTHMOVING SOLUTIONS PROVIDER IN SUB-SAHARAN AFRICA

www.itrafrica.com

MANUFACTURER’S NAMES, NUMBERS & DESCRIPTIONS ARE USED FOR REFERENCE PURPOSES ONLY & IT IS NOT IMPLIED THAT ANY PART LISTED IS THE PRODUCT OF THE MANUFACTURERS



GROUND ENGAGING TOOLS AND BUCKETS



The ITR GET line features on-going development of new product lines as well as high-performance, innovation-based, original solutions.

The ITR **UNIK** line has been designed for any and all applications where high penetration, impact resistance and increased wear life are essential. Unique features are an innovative and modern self-sharpening design, a reinforced pocket structure, increased side pin protection, high impact resistance and selected ITR steel composition, all ensuring excellent performance and an extended wear life.

The **BYG Futura** Wear Technology Premium range is designed for mining machines up to 800 tons. The main features are its hammerless solutions that increase safety and reduce downtime, extra weight invested in reinforcing the key areas of the tooth where it has more exposure to wear, and its design with lateral and central ribs that facilitate the flow of material, significantly extending life while retaining its self-sharpening properties.

OILS AND LUBRICANTS



ITR has a range of quality lubricants that deliver superior engine protection and performance, for machines used in construction, industrial and marine sectors. ITR lubricants are formulated with highly refined base oils, extreme pressure agents, anti-wear and anti-corrosive resistance additives for smooth operation.

CRAWLER SYSTEMS AND TRACK FRAMES

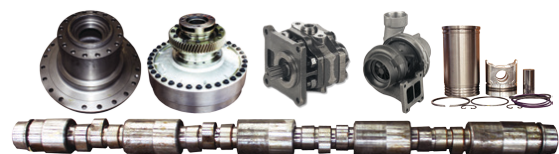


ITR offers Complete Undercarriage Crawler Track Solutions for many applications: Drill Rigs, Screen Plants, Crushing Plants, Underground Applications and more. The Crawler System is supplied complete, including Final Drives & Travel Motors.

TRACK ONE side frames are available for machines with a total weight between 500 kg and 200 tons.

These frames are typically used for crushers, drilling machines, conveyors, road pavers and milling machines.

REPAIR PARTS



ITR has developed the widest range of repair parts available on the market for earth moving machines today. Engine parts such as crankshafts, connecting rods, pistons, cylinder heads, cylinder blocks, cylinder liners, engine valves. Hydraulic parts like gear pumps, piston pumps and hydraulic steering systems. Clutch parts, cooling system parts such as radiators, oil coolers and pumps. Torque converters and their relative components. Braking system parts such as calipers, discs and air compressors. Electric parts such as engine starters, alternators, switches, sensors, batteries and worklamps. Parts for transmissions, differential systems and final drives. Chassis parts such as equalizer bars, bogies and guards.



THE FIRST CHOICE EARTHMOVING SOLUTIONS PROVIDER IN SUB-SAHARAN AFRICA

www.itrafrica.com

MANUFACTURER'S NAMES, NUMBERS & DESCRIPTIONS ARE USED FOR REFERENCE PURPOSES ONLY & IT IS NOT IMPLIED THAT ANY PART LISTED IS THE PRODUCT OF THE MANUFACTURERS



MZANTSI TRANSMISSIONS

6 Van der Bijl Street, Alrode South, Alberton

We offer specialised transmission repairs for heavy duty & on highway machines



WE OFFER SPECIALISED TRANSMISSION REPAIRS FOR HEAVY DUTY & ON HIGHWAY MACHINES

BELL • TEREX • CAT • JOHN DEERE
HITACHI • DAEWOO • ZF • ALLISON • CLARK • FUNK

We offer dyno testing on the following boxes:

ZF - 4WG92, 4WG94, 4/6WG180/200/210/310
Allison - MD3560, HD4560

WE PURCHASE 2ND HAND TRANSMISSIONS

Bell B17B, B20B, B25B, 1206 & B40D
Transmissions in stock

Email: info@gearboxes.me | Tel: 011 868 5130 | Fax: 086 634 7904 | Cell: 071 684 5784

FILTER CENTRE

Quality Lubricants NOW IN STOCK

Leaders in Heavy-Duty Filtration



AGRICULTURE



www.filtercentre.com
info@filtercentre.com
031 700 9074





MACHINES FOR SALE



**MERCEDES-BENZ ATEGO
TIPPER TRUCK
(2001 MODEL)
R440 000 +VAT**



**MERCEDES-BENZ
POWERLINER 2629
(1985 MODEL)
R 250 000 + VAT**



**LIEBHERR 538 LOADER
2013 MODEL
(AUTOMATIC GREASING
SYSTEM AND L5 TYRES)
R 425 000 + VAT**



**LIEBHERR R924B
EXCAVATOR 27 TON
2004 MODEL
(NEW GROUSER SHOES)
R 220 000 + VAT**



**BELL B20C DUMPER
(Not Registered)
R 420 000 + VAT**



CONTACT

Francois Gerber

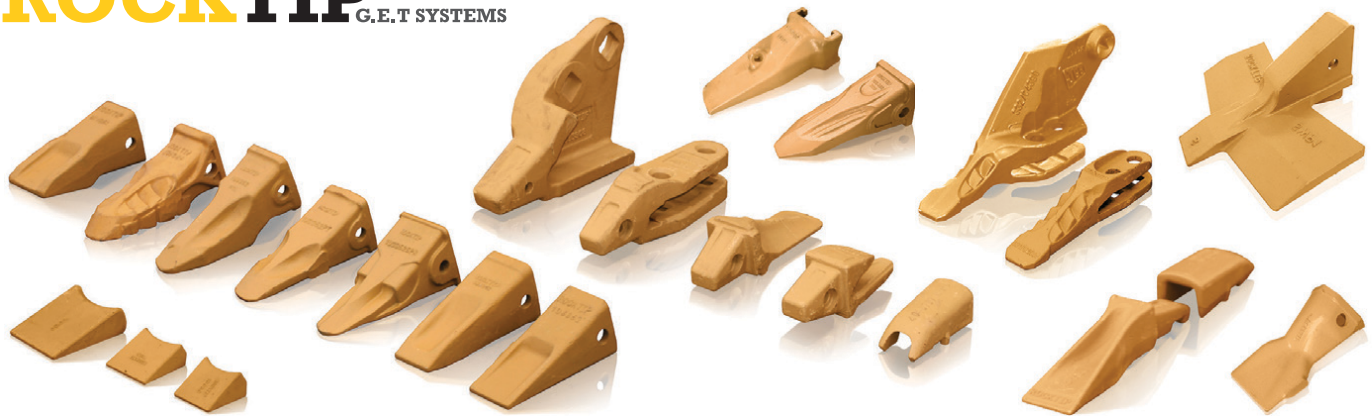
082 454 0934 | charlesjnr@transand.net | 044 695 0105



SPEC-CAST WEAR PARTS
Trusted to deliver

Spec-Cast Wear Parts (PTY) Ltd is a leading manufacturer specializing in the supply of ground engaging tools, undercarriage, undercarriage components, track frames, suspension group replacement parts, agricultural wear parts, general castings and forgings for the construction, mining and agricultural industries.

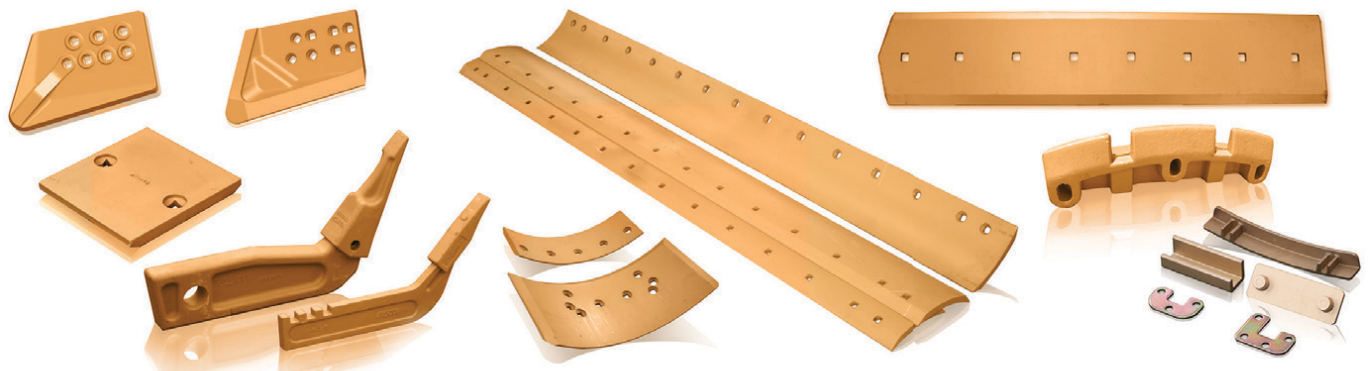
ROCKTIP G.E.T SYSTEMS



Teeth and Adapters for Various Models



Wear Protection



Blades, Cutting Edges, End Bits and Grader Wear Parts

Manufacturers of G.E.T to fit:

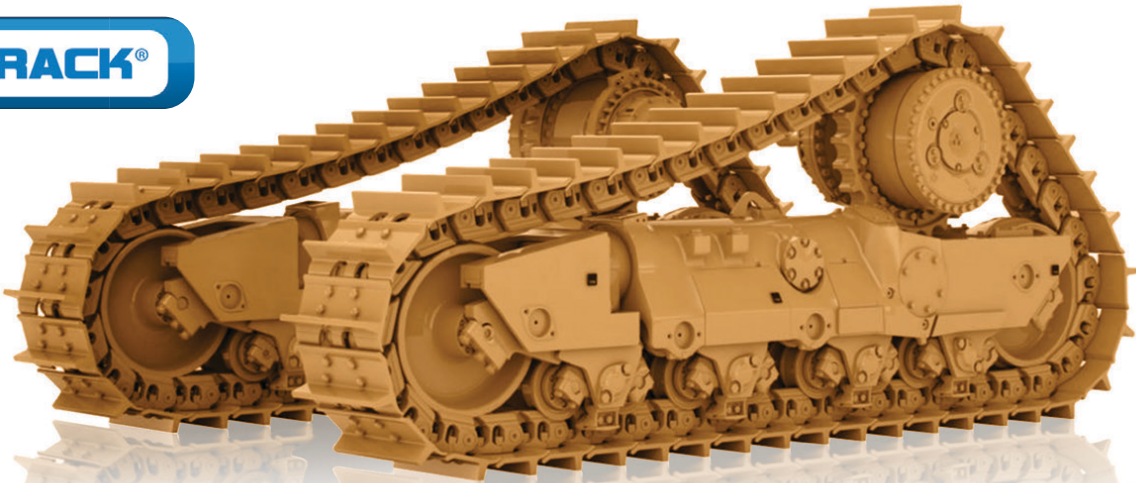
CATERPILLAR	TEREX	ESCO	LIEBHERR	H & L	BOBCAT
KOMATSU	JCB	HYUNDAI	DAEWOO	BUCYRUS	MTG
NEW HOLLAND	MASSEY FERGUSON	CASE	BOFOR	LIUGONG	KUBOTA

Manufacturer's names, numbers, symbols and descriptions are used for reference purposes only and it is not implied that any part listed above is the product of the manufacturers.

Spec-Cast offers a wide range of undercarriage components covering the entire range of modern crawler machine applications in the construction, mining, utility, forestry, road, building, and agricultural industries. Covering all makes and models of machines, from drilling machines to hydraulic excavators, as well as dozers, auxiliary machines, conveyors and customised solutions.



SPEC-CAST WEAR PARTS
Trusted to deliver



Spec-Cast Wear Parts is an authorized Dealer for ITM and VEMATRAK undercarriage parts.
Call our undercarriage experts today!



Chains



Rollers



Sprockets



Idlers



Shoes



Rubber Tracks

CATERPILLAR	HITACHI	KOMATSU	LIEBHERR
6018 RH90	EX1200	PC1250	R9100
6030 RH120E	EX1800/1900	PC2000	R9150
6040/50	EX2500/2600	PC3000	R9250
RH170/200	EX3500/3600	PC4000	R9350
6060 - RH340	EX5500/5600	PC5500	R9400
7495 - 495HRII	EX8000	D375	R995
D8, D9, 10 & D11		D475	R996
			R9800

Our track workshop is available to support all your undercarriage needs

Turning of Pins & Bushes
Remove/Fit Track Shoes

Re-Build Idlers
Re-Shell Rollers

Re-Strip Grouser Shoes
Re-Rim Sprockets

With branches and distributors located in prime areas throughout South Africa, as well as several African countries, Spec-Cast is able to provide the Earthmoving, Mining and Agricultural industries with an efficient, cost effective supply and distribution network.

JHB HEAD OFFICE

+27 11 396 1717/13
aimee@spec-cast.co.za
11 Elgin Street, Pomona,
Kempston Park, Johannesburg

www.spec-cast.co.za

MIDDELBURG
+27 13 813 1413
middelburg@spec-cast.co.za
6 Jaspis Street
Middelburg, Mpumalanga

NORTHERN CAPE
+27 53 010 1304
northerncape@spec-cast.co.za
Section C3, Portion of Farm Waterraad
Kathu, Northern Cape

Follow us:





AFFORDABLE ☒ RELIABLE ☒ TRUSTED ☒

WWW.DURASALES.CO.ZA



☒ 2008 CAT D6T
13791 HOURS



☒ 2014 CAT 140K
4550 HOURS, FULLY REFURBISHED



☒ NEW 1000L DIESEL BOWSER



☒ NEW AMMAN ARS122



☒ 2005 NISSDAN UD440 6X4
16 000L



☒ 2019 LOVOL FL958G-II
355.7 HOURS



☒ 1998 BELL B25C 6X6
FULLY REFURBISHED



☒ 2011 BELL B50D
9900 HOURS



☒ 2003 GROVE TR250 CRANE
29915 HOURS



☒ 2001 BELL B40C
38000L WATER TANKER



☒ 2007 MERCEDES BENZ
8875 HOURS



☒ 2014 SDLG LG958H
6950 HOURS

Visit our website on www.durasales.co.za for updated stock. T&C APPLY

JHB SHOWROOM:
46 Viewpoint Road
Bartlett, Boksburg

CPT SHOWROOM:
30 Kiaat Street
Kraaifontein, WC.

Contact our showrooms:

Gauteng: +27 (0) 11 918 4760
Western Cape: +27 (0) 21 988 6618
North West: +27 (0) 82 443 6646
KwaZulu Natal: +27 (0) 31 705 1770

JHB SALES TEAM:

JP: +27 66 160 5505
Coenie: +27 83 251 8046
Jerry: +27 82 895 5611
Curtis: +27 82 359 9199
Prinsloo: +27 71 611 7281

CPT SALES TEAM:

Gerrie: +27 82 950 7040
Pottie: +27 83 600 0729

DURA EQUIPMENT SALES

AFFORDABLE  **RELIABLE**  **TRUSTED** 

WWW.DURASALES.CO.ZA




 **2018 KAMAZ B65222 6X6**
36000KM




 **2011 CAT 966H**
15350 HOURS




 **2011 CAT D8R**
10000 HOURS



 **2012 CAT 336D**
7604 HOURS



 **2012 CAT 320D**
9110 HOURS




 **2007 KOMATSU D65E-12**
11300 HOURS




 **2008 CAT 428E**
5012 HOURS




 **2008 JCB 540-170**
8539 HOURS




 **2009 CAT CS533E**
2795 HOURS




 **NEW LOVOL FL966-II**
FULL WARRANTY



 **NEW LOVOL FL956H**
3.0 CUBE BUCKET



 **NEW LOVOL FL936H**
2.0 CUBE BUCKET

Visit our website on www.durasales.co.za for updated stock. T&C APPLY

JHB SHOWROOM
46 Viewpoint Road
Bartlett, Boksburg

CPT SHOWROOM
30 Klaat Street
Kraaifontein, WC

Contact our showrooms:

Gauteng: +27 (0) 11 918 4760
Western Cape: +27 (0) 21 988 6618
North West: +27 (0) 82 443 6646
KwaZulu Natal: +27 (0) 31 705 1770

JHB SALES TEAM:

JP: +27 66 160 5505
Coenie: +27 83 251 8046
Jerry: +27 82 895 5611
Curtis: +27 82 359 9199
Prinsloo: +27 71 611 7281

CPT SALES TEAM:

Gerrie: +27 82 950 7040
Pottie: +27 83 600 0729



We are stripping earthmoving
equipment for spares.

GRADERS



CAT 140 G/H
CAT 16 G
BELL 872 D

ROLLERS



STA VV 900
BW 211 D-3
BW 212 D-2
BW 212 D-2A

DUMPERS



BELL B17 B
BELL B20 B/C/D
BELL B35 D
KOMATSU HM 400-1
CAT 740

EXCAVATORS



SUMITOMO SH 200-1/3
SUMITOMO SH 450-3
CAT 320 LME
CAT 324
CAT 330 B
CAT 375 L
CAT 385-B/C
KOMATSU PC 220-6
KOMATSU PC 200-7
KOMATSU PC 300-7
BELL KATO H 820-11
BELL KATO HD 1023

WHEEL LOADERS



CAT 924 G
CAT 962 G
FURUKAWA FL170/230/330
KOMATSU WA 120-3
KOMATSU WA 250-3/5
KOMATSU WA 280-3
KOMATSU WA 320-3
KOMATSU WA 470-5
KAWASAKI Z85-IV
KAWASAKI Z 90-IV

DOZERS



KOMATSU D 65-8
KOMATSU D 85-18/21
KOMATSU D 275-2/5
KOMATSU D 375-2/3/5

Contact us on: Magda: +27 (0) 72 056 3341

email: admin@duraparts.co.za
WWW.DURASALES.CO.ZA



● Seals ● Bearings ● Hydraulic Components

We have moved to 504 Pretoria Road, Fairleads, Benoni

Tel: +27 11 420 1003 | Roger: +27 79 493 4486 | Damian: +27 79 897 9822

Seals:

- Earth moving cylinder kits
- Hydraulic seals
- Pneumatic seals
- Oil seal
- O rings
- D rings
- Torric/duo cone/face seals

Bearings:

- Spherical plain bearings
- Spherical roller bearings
- Deep groove ball bearings
- Thrust bearings
- Taper roller bearing
- Needle bearings

Plastic engineering:

- Custom seal manufacturing
- Valve seats
- Bellows
- PTFE balls
- Pressure pads
- Sheeve wheels
- Rail slides

Brands we stock:



Brands we stock:



Plastics we stock/machine:

- Nylon
- PTFE
- Bronze impregnated PTFE
- Carbon impregnated PTFE
- Glass impregnated PTFE
- Tufnol
- Polyurethane
- All other engineering plastics

Components/Miscellaneous:

- Pins
- Bushes
- Cylinder bolts/washers
- Hydraulic glands
- Custom pattern making
- Castings

- LED work lights
- Component remanufacturing and repair
- Torque rod bushes
- Bellows
- Custom sourcing and supply of goods

Through our network we can also offer a wide range of service exchange hydraulic cylinders



Hennie Nelson
South Africa, Witbank
+27 82 414 1393
sales@inmine.co.za



VARIETY OF
CATERPILLAR & HITACHI ENGINES



CAT 16H GRADER ENGINE
RUNNER



CATERPILLAR 777 / 785
D11 TORQUE CONVERTERS



CAT 785 RECONDITIONED
& USED FINAL DRIVE



RECONDITIONED
CAT 773 DIFF

WWW.INMIME.COM

Plot 26 Naauwpoort, Benicon Park, Witbank 1036
Mpumalanga, South Africa

CAT 773F Stripping for parts



Available parts:

2 x Final drives	All suspension cylinders
1 x Diff	1 x Radiator pack
1 x Transmission	

CAT 773F Bowl



Stripping 2 x Cat 992G



**PLEASE ENQUIRE FOR
INFORMATION ON
AVAILABLE PARTS**

CAT 789C Used Engine



SET / RECONDITIONED CAT 6030 FACE SHOVEL CYLINDERS



**RH120 / RH200
& RH340 Sprockets**



**2 x Boom Lift Cylinders / 2 x Stick Cylinders
2 x Bucket Tilt Cylinders**



**RH120E Reconditioned
Cylinders**



**INMINE have a full operational workshop, that does all work inhouse
from Idler rebuilds to Grouser shoe restripping.**

Earthmoving Specialist

Old & New Generation Experience



WE SPECIALIZE IN CUMMINS ENGINES

REPAIRS, SPARES & MAINTENANCE TO LEADING EARTHMOVING MACHINERY

Full Diagnostic Troubleshooting

Carlos Caroto: 079 519 6769 | Email: jennycaroto@live.co.za

Earthmoving Specialist



OLD & NEW GENERATION EXPERIENCE



FULL DIAGNOSTIC TROUBLESHOOTING


REPAIRS, SPARES & MAINTENANCE TO LEADING EARTHMOVING MACHINERY

SPECIALISING IN: CAT ECPC, ICM COUNTERSHIFT & POWERSHIFT TRANSMISSION REBUILDING

Carlos Caroto: 079 519 6769 | Email: jennycaroto@live.co.za

GRAHAM'S PLANT REPAIRS

EXPERIENCED ENGINE REBUILDER




TANDUIM CHAIN MASTER LINKS for BELL GRADER EQUIPMENT 770G
PRICE R7000-00 Each
Brand New Genuine BELL EQUIPMENT PARTS

ENGINES BUILT TO ALL SPECIFICATIONS FROM 4CYL - 20V MTU'S 8000 SERIES

QUOTE ON LABOUR

GUARANTEE ON LABOUR ONLY



MODEL TYPE 2645 K 011
DELP C-00 LJBB03201A
PERKINS
R12 000-00 +
6 MONTH WARRANTY

GRAHAM GOLDSWAIN - 067 237 9119
goldswain9@gmail.com / Tel: 031 337 4743



RAMM Parts
adriaan@rammparts.co.za
marc@rammparts.co.za

Adriaan 076 127 2977
Marc 072 530 7373
Rodney 073 103 9582

We are buying used machines, running and non running.



Komatsu PC220 for sale - Running



2006 Bell L2106D For sale, 12000 hours,
5 cube coal bucket included in price
R 550 000,00 + VAT



Komatsu PC270-7 for sale Running



Komatsu HM400-2 stripping for spares



Chieftain 1700 Powerscreen
Complete Rebuild in progress
For more info contact us



Volvo L180G Wheel Loader



Komatsu A375-5 stripping for spares



Kawasaki 85 Z5 stripping for spares



Volvo A35E stripping for spares



Buckets for sale , kawasaki Z85(new),
Hitachi 870, Volvo, Doosan



Volvo A35D stripping for spares



Bell B40 Runner

158 Watermeyer Street, Witbank

Repairs to all OFF and ON Highway Transmissions, Torque Convertors, Gearboxes, Differentials and Power Take Off's



VORTEX
TRANSMISSIONS

Tel: 011 452-4430/1
Parts: 011 452 3296 / 452 3390
Johan: 082 333 1005
Jan: 082 333 1004
Fax: 011 609 5302
Email: vortex3@mweb.co.za



Allison Fuller • Clark • Caterpillar • Funk Twin Disk



SERVICE UNITS:

- AT 545 bell (spec)
- MT 643 bell (spec)
- MD 3560 P TID 2
- MD 3560 P TID 3
- MD 3060 TID 3
- 4500 ORS GEN 4
- 4500 ORS R GEN 4 LIFE FILTER Bell B40D
- 4500 ORS R GEN 4 Bell B50E
- Terex engine PTO 'S TR 60
- Euclid and Terex transmission PTO'S
- Euclid 6610A CEC2
- Terex 6610AR CEC 2
- Euclid 6620A

UNITS THAT WE ALSO DO:

- Bell grader transmissions
- Cat transmissions
- Funk transmissions
- Terex & Euclid Differential center portions
- Bell differential center portion
- Chelsea PTO'S
- Terex engine PTO'S TR 100



Vortex Transmissions sell genuine Allison parts for all our transmissions Dyno testing is done in house and all transmissions that are tested have test reports



Marsay Equipment specialises in the buying, refurbishment and selling of good used construction, mining, stone crushing and transport equipment.

We operate throughout southern Africa, mainly the SADC region.
We are based in Johannesburg South Africa and have been in business for 44 years.

TIM MARSAY +27 83 654 4248
PATRICK MARSAY +27 79 187 7937

tim@marsayequip.co.za
www.marsay.co.za

20 - 30T P/H CRUSHING PLANT



DO YOU NEED AN ACCURATE MARKET VALUE OF YOUR USED EQUIPMENT?

Marsay Equipment has been involved in the marketing of used equipment throughout southern Africa for the past 44 years.

We constantly keep our finger on the pulse of trends and movements in the used equipment market - especially in the field of stone crushing, earthmoving, mining and construction equipment.

We pride ourselves in the fact that we are in a position to accurately value this equipment in the prevailing market conditions. The market has rarely been as volatile as it is now due to the Covid-19 situation. If you have good used machinery that you are not using at present it could be worth more than you think either as a sale or as collateral with a financing institution. We have undertaken major valuations for numerous large construction and transport companies in Southern Africa for the last 26 years or so and our valuations have been accepted in banking, auditing, legal and industrial circles.

If you would like further information or an estimate on the cost of a valuation exercise, please complete the form on our website - www.marsay.co.za or call **Tim Marsay** on **083 654 4248**

- Loading bin, belt feeder
- Osborn (Telsmith 14x24)
- Hadfields 24 x 7 Granulator
- About 6 conveyors
- 2 x double deck screens

ALL cables and switchgear stolen
You can more or less work out the layout of the plant from the

Located about
200km from Cape Town



**Grind Right Engineering
& Services (Pty) Ltd**



Grind Right Site
9 Newton Street
Middelburg
1050
Tel: 066-108 7439

**Grind Right Engineering
& Services**
16 Watt Street
Middelburg, 1050
Tel: 013-246 2308

www.grindright.co.za grindright@gmail.com

Grind Right Engineering was established in 2005. We are situated in Middelburg, Mpumalanga and specialises in Precision Machining, CNC Machining, Fabrication & Site Installation, Core Drilling.

On-site Line Boring as well as the manufacturing and re-conditioning of: # Ferrous and Non-Ferrous Bushes and Liners, # Rolls, wheels and shafts, # Hardened rolls, wheels and shafts, # Buckets, sticks & booms, # Hardened pins and bushes for all Earthmoving Equipment. Site crews available for Turn Key Projects, Maintenance, Erectionsm Fabrications, Specialised Welding and Surveys

We provide the best engineering services to mining, construction and plant groups. We do newly build / repairs and relining on all earthmoving blades, bowls, undercarriage and track frames.

Upon all that we also assist with condition monitoring on the wear of all liner packs.

VENDEL EQUIPMENT SALES (PTY) LTD

T/A | ASSOCIATED EQUIPMENT

P O Box 3716, Honeydew, 2040
Telephone: +27 (11) 801 4911/2
Reg. no: 2013/000179/07
associated1@xnet.co.za

ANTON +27 (0)82 923 5397
CHRIS +27 (0)83 626 5588
JAAP +27 (0)82 892 1327
LORAINÉ +27 (0)76 021 4344

Plot 92 Indaba Lane-off Beyers Naude,
Rietfontein, Roodepoort 2040
Fax: +27 (11) 801 4914
associatedloraine@xnet.co.za

WE ARE BUYERS FOR YOUR REDUNDANT EQUIPMENT



1 x 2007 Caterpillar 323D Excavator
1 x 2014 Caterpillar 320D Excavator
1 x 2008 Caterpillar 320D Excavator



5 x Caterpillar 140G
Motor Graders with Rippers
1 x Komatsu GD650
Grader with ripper



2 x New / Unused Case 770EX
Magnum 4x4 TLB's-86HP 2020 Models
2 x New / Unused Manitou 844S 4x4 T



1 x Cat PF-300C PTR - 2009
1 x Ingersoll Rand - 27 Ton PTR
1 x 2012 Hamm GRW18, Hours 2483



2 x F. A. W 10M Trucks - 2016
1 x Terex T30 6x6 Dump truck - 2004
1 x 3 Axle Hendred Goosneck trailer



1 x Bell 2306D Tow Tractor 4x4
1 x 18 000 Liter Trailer
1 x Tecon Grid Roller
1 x Discharged Bin Trailer



4 X Etnyre K Chip Spreader's
Refurbished, mechanical and
electronic operated



1 x 2016 Doosan DX62R-3
Hours on clock: 1098
1 x 2010 - Cat 302.5c Mini Excavator
1 x 2013 Wacker Neuson 50Z3



1 x Caterpillar D6T Dozer with Ripper
2010 Model Rebuild engine new undercarriage
1 x Komatsu D65E-12 Dozer 2011 Model



1 x 2013 Cat 428F 4x4 TLB
1 x Bell 315 SJ 4x4 TLB
2 x New / Unused Case 770EX Magnum
4x4 TLB's-86HP 2020 Models
2 x New /Unused Manitou 844S 4x4 T



2 x Hamm 3520 20 Ton SDR's 2011/2010
1 x 2013 Hamm 3411 Padfoot Roller
1 x 2008 Hamm 3411 SD Roller
1 x Dynapac R 3 Point Steel Rolle-13 Ton
1 x Bomag BW219 Smooth Drum Roller



2 x Caterpillar 950H FEL 2013 models
1 x Caterpillar 980H FEL - 2014
1 x Cat 938K Loader - 2014
2 x Sem 668C Front end loaders - 2014



3 x Benford TV1200 DDV Rollers
1 x Bomag BW120AD-4 Roller
1 x Ammann AV12-2 Double DDVR



2 x JCB 535-140 Telehandler 2015/14
2 x JCB 535-125 Telehandlers 2016/14
1 x JCB 540-140 Telehandlers 2016
1 x JCB 540-170 Telehandler 2014



1 x Caterpillar RM 300 Reclaimer
2010 Model - ONLY 4045 HRS



1 x Komatsu PC200-8 Excavator 2013
New undercarriage
1 x Komatsu PC200-8 Excavator 2012
1 x Komatsu PC220-8 Excavator -2011



1 x JCB 456 ZX Front end Loader 2014
1 x JCB 456 ZX Front end Loader 2013
2 x Bell 1806E Front end loader's 2011



2 x Bell Kamaz 65222 - 9M³ 6x6
2018 Demo Models 3000 and 18000K
1 x Man 25- 280BL Low Bed - 2009



2 x AWE Double Axle lighting plant
2009/2008 Models



1 x Bomag BW212D-40
Smooth drum roller - 2014 Model
2 x Bomag BW212D-40 SD Rollers

GPS CO-ORDINATES: **S26°3'56.343 - E37°52'37.453**

www.associatedequipment.co.za / www.vendelequipmentsales.co.za



AFRICA'S LEADING EARTHMoving EQUIPMENT & PARTS DEALER

www.blcplant.com ☎ +27 11 555 2000 ✉ info@blcplant.com

PLANT

PARTS

RENTAL



**OVER 600
MACHINES
IN STOCK**



HYDRAULIC EXCAVATORS

CAT 320D, 325D, 329D, 330D, 336D, 345D,
349D, 365C, 374D/F, 385C, 390D/F



DOZERS

CAT D6R, D6T, D7R, D8R, D9R/T, D10T, D11T



RIGID DUMP TRUCKS

25 X CAT 777D, 5 X 777F



MOTOR GRADERS

CAT 140G, 140H, 140K, 14H, 16G, 120H, 14M,
16H, 16M



ARTICULATED TRUCKS

BELL B40D, B35D



ARTICULATED TRUCKS

CAT 725, 730, 740, 740B, 745C



VOLVO ARTICULATED DUMP TRUCK

A40F



KOMATSU EXCAVATOR

PC600



FRONT END LOADER

CAT 992 K



TRACTOR LOADER BACKHOES

CAT 428F, 428F2, 426F, 450E



COMPACTION ROLLERS

BOMAG BW212-3, BW213D, BW219-3
CAT CS533, CP 533E, CS563E, CS76



FRONT END LOADERS

CAT 950H, 950GC, 966H, 962H, 972H,
980H, 988G, 992K

**LARGEST STOCK OF
PARTS IN THE
SOUTHERN HEMISPHERE**

Service exchange units available.

6 MONTHS WARRANTY
on refurbished components.

View all our available
stock on our website
www.blcplant.com



BLC Plant purchases earthmoving equipment for stock, rebuilds it as required in the fully equipped on-site workshops and then sells it to users in various industries. We focus on delivering products which meet customer specifications, offer buyers a viable alternative to new equipment and provide excellent after sales service and support.

PLANT

PLANT – STOCK READY TO GO



CAT 277D SKID STEER



TADANO TR250M-6 RT CRANE



DOOSAN EXCAVATOR



**KOMATSU
HM400 35000L WATER BOWSER**



120T LOW BED



CAT 120H MOTOR GRADER



CAT 966L FRONT END LOADER



CAT 140M MOTOR GRADER

TRUCKS – STOCK READY TO GO



MERCEDES 3331 ROCK BIN



MERCEDES 3331 HEAVY DUTY BIN



MAN 26-280 10M3 TIPPER NEW



TATA 2528 10M3



MERCEDES 3335 10M3



NISSAN UD 330D 16000L WATER



MERCEDES 2628 CRANE 12 TON METER



MERCEDES 3340 CRANE 15 TON METER

Call us now **+27 (0)11 555 2000** or visit **www.blcplant.com** for our latest stock.



Largest stock of parts in the southern hemisphere. Service exchange units available. **6 Months warrantee on refurbished components.**

www.blcplant.com

+27 11 555 2000 

info@blcplant.com 

Corner Wynberg Road and 2nd Avenue, Kew 

PARTS

STRIPPED OVER 3000 CAT MACHINES FOR STOCK



CATERPILLAR
Dozer Engines



CATERPILLAR
Dozer Final Drives



CATERPILLAR
Grader Transmissions



CATERPILLAR
Loader Axles



CATERPILLAR
Loader Transmissions



CATERPILLAR
Grader Axles



CATERPILLAR
Transfer Box



CATERPILLAR
Off Highway Transmissions

Call us now +27 (0)11 555 2000 or visit www.blcplant.com for our latest stock.



All Africa Supplies

GLOBAL REACH - LOCAL SUPPLY

www.allafricasupplies.net

011 918 9976

Enquiries: sales@allafricasupplies.net

228 All Black Road Anderbolt Boksburg

BELL



CARRARO

HITACHI

VOLVO

Construction Equipment

DOOSAN



CAT



HYUNDAI
HEAVY INDUSTRIES CO.,LTD.

Mobil

ISUZU

KOMATSU

*All manufacturers names, numbers, symbols and pictures are for reference only. It does not imply that any of the parts are the product of these manufacturers.

HYDRAULIC CENTRE

OUR FACILITY HAS THE CAPACITY TO TEST THE FOLLOWING HYDRAULIC EQUIPMENT:

MAIN HYDRAULIC PUMPS • WHEEL STATIONS • FINAL DRIVES • HYDRAULIC CYLINDERS



WE CARRY A FULL 3 MONTH 500HR WARRANTY



**AUTHORIZED
PARTS DISTRIBUTOR**

Follow us on Social Media



Facebook / All Africa Supplies



Google+



Instagram / @allafricasupplies

www.allafricasupplies.net

YOUR EARTHMOVING COMPONENT SPECIALIST



Ladis : +27 78 162 5250 Kyle : +27 83 602 5430 Conrad : +27 79 525 0882
ladislas.l@pandearthmoving.com kyle@prearthmoving.com conrad@prearthmoving.com
Scott : +27 72 565 4920 No. 170 - 3rd Avenue, Bredell
scott@prearthmoving.com Kempton Park, 1619. South Africa

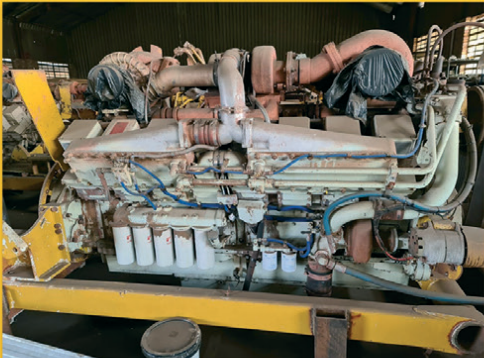
ATTACHMENTS • AXLES • BREAK GROUPS • CYLINDERS • ENGINES • FINAL DRIVES • G.E.T.



KOMATSU GD825
RUNNING MACHINE



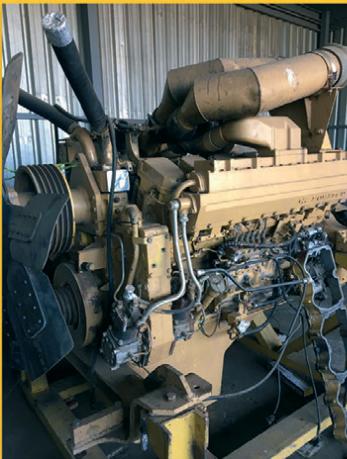
KOMATSU 475-5
RUNNING MACHINE



CUMMINS K2000
ENGINE



CAT 773F
COMPONENTS



KOMATSU 785-5
ENGINE



D10 TRANSMISSION
2 X AVAILABLE



C27 D10T
ENGINE



CAT C9
ENGINE



CAT C13
ENGINE



LIEBHERR 9250
TRACK GROUPS

HYDRAULIC PUMPS • NEW PARTS • POWERTRAINS • TRANSMISSIONS • UNDERCARRIAGE

YOUR EARTHMOVING COMPONENT SPECIALIST www.prearthmoving.com



SINCE 2013



Agri Earth

www.LNE-AgriEarth.com

+27 (0)861 888 008 | +27 (0)83 327 3237 (A/H)

LNE@LNE-AgriEarth.com

[@LNEAgriEarth](https://www.facebook.com/LNEAgriEarth)



CARRARO

Spare Parts
Authorized Dealer

GOOD USED EARTHMOVING PARTS AND EQUIPMENT

STM
MINING EQUIPMENT PTY(LTD)

Tel: (011)894-6192 / (011)894-3377

Fax: (011)894 7914

barney@stmmining.co.za

donovan@stmmining.co.za

Office Hrs: Mon-Fri 07h00-17h00



STM Mining Equipment (PTY) LTD was established in 2002 and has been supplying customers good second hand components and parts for earth moving machines in 2016 we started field service with technician's and recon components and repairing machines.

We supply goods to a wide range of industries such as construction, civil, plant hire, mining and farming industries and as far as Australia, America, Botswana, Zimbabwe and a lot of locally supplied customers to. We have been supplying good secondhand parts to the market since 2002.

OUR PRODUCTS & SERVICES

We supply second hand machines and good used parts for most makes of Earthmoving Equipment ie: Cat, Komatsu.

We buy second hand machines to strip for components and parts, dead or alive to keep in stock for customers. We have a repair shop where we do components and Repair machines for Customers.

**Engines | Engine Blocks | Sub Assemblies
Crankshafts | Cylinder heads | Engine Parts
Undercarriage | Frames & Body | Components
Portable Diesel Compressors**

PO Box 6456, Dunswart 1508, 40 Michelson RD. Westwood, Boksburg

www.stmmining.co.za

BREAKING AWAY FROM THE REST OF THE PACK



MANUFACTURERS, SUPPLIERS AND STOCKISTS OF:

**CUTTING EDGES | MOLD BOARD LINERS | GRADE BLADES
TIPS AND ADAPTORS | RIPPER SHANKS | END BITS**

WE MANUFACTURE, SUPPLY AND STOCK G.E.T. FOR:

**CAT | KOMATSU | VOLVO | HITACHI | BELL | LIEBHERR | JCB | CASE
TEREX | FURUKAWA | LIUGONG | SANY | SANYO | SHANTUI | FIAT**

WEARPACT ALSO OFFERS A SPECIALIST BUCKET REPAIR SERVICE

WEARPACT

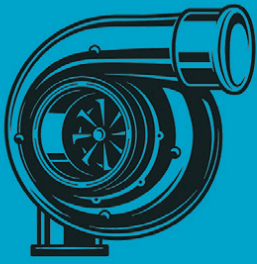
☎ 011 421 4705 / 011 845 3234 / 011 845 3272

☎ 011 421 8761

✉ mwwrp@mweb.co.za

*MANUFACTURER'S NAMES, NUMBERS & DESCRIPTIONS ARE USED FOR REFERENCE PURPOSES ONLY. IT IS NOT IMPLIED THAT ANY PART LISTED IS THE PRODUCT OF THE MANUFACTURERS.

www.wearpact.co.za



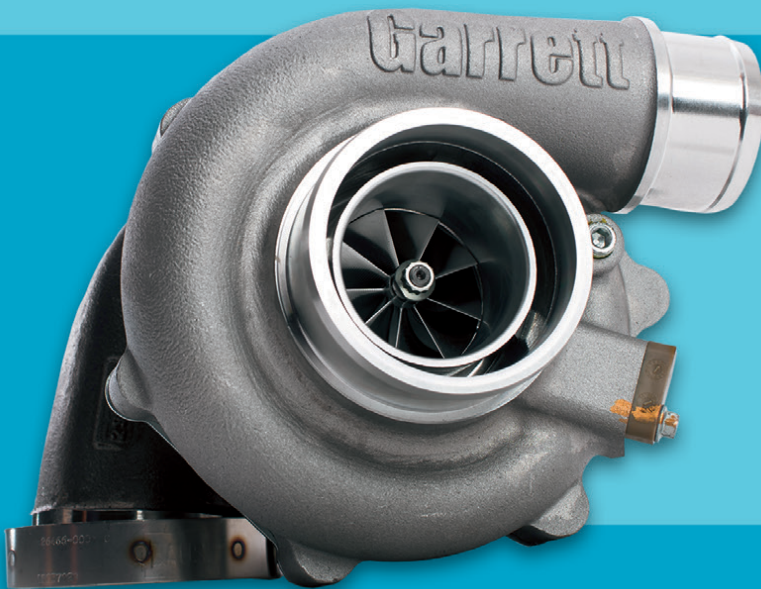
TURBOWORKS

"Best quality turbochargers - no compromise"

For all Construction and Mining machine turbocharger requirements, contact TURBOWORKS for the best and most cost-effective solution.

TURBOCHARGERS

- New
- Reconditioned, service-exchange
- Repairs



SECTORS

- Mining
- Plant hire
- Transport
- Agriculture
- Passenger vehicle
- Generators

**POPULAR SERVICE-EXCHANGE TURBOCHARGERS,
AVAILABLE FOR IMMEDIATE DELIVERY.**



- All makes and models
- 12 Months warranty
- Free "Strip-and-quote"
- Pick-up and deliver
- Supplying the entire African continent



57 Adriana Crescent, Gateway Industrial Park, Rooihuiskraal, Centurion

Tel: +27 12 653 7507

Email: sales@turboworks.co.za

www.turboworks.co.za

After-hours: +27 82 824 8037



TRADINGINTERNATIONAL

www.bmhplant.com

082 780 0084 | 021 903 2667

bradley@bmhtradinginternational.com



2013 HITACHI ZX470 LCR-5G
12 600 HRS



2011 HITACHI ZX670 LCR-3
20 000 HRS



2017 ZX 870 LCR-5G
16 500 HRS



2013 HITACHI ZX330LC-5G
7 000 HRS



2013 Hitachi ZX210W-3
6 700 HRS



2017 KUBOTA U50-5
300 HRS



2018 HAMMER CH 400 METAL SHEAR
8 - 12 TON MACHINE



2020 HAMMER CONCRETE PULVERIZOR
22 - 30 TON MACHINE



2020 HAMMER FX 2200
22 - 30 TON MACHINE



S. MICHELL,
THE PLANT FINDER CC
The **RIGHT EQUIPMENT** at the **RIGHT PRICE**

USED PLANT AVAILABLE



**2X USED HIDROMEK HMK62SS
MINI-TLB'S**

YEAR: 2018 / SMR: 865,1335 HRS
FULLY ENCLOSED CABS WITH
AIR-CON. AUXILIARY HYDRAULICS
FITTED TO FRONT & REAR.
MULTI-PURPOSE LOADER BUCKET.



**1X USED KOMATSU D61EX-23
TRACKED DOZER**

S/NO: B50067
YEAR: 2015
SMR: 10000 HOURS
PAT BLADE, WITH 3 SHANK RIPPER.



**1X USED ATLAS WEYCOR
AR60 FEL**

YEAR: 2017 / SMR: 2268 HOURS
QUICK HITCH, BUCKET &
PALLET FORKS.
AUXILIARY HYDRAULICS



**1X USED CAT 226B2
SKIDSTEER LOADER**

SERIAL NO: MJH15131
YEAR: 2010 / SMR: 5650
QUICK HITCH, BUCKET &
PALLET FORKS.



S. MICHELL,

THE PLANT FINDER CC

The **RIGHT EQUIPMENT** at the **RIGHT PRICE**

USED PLANT AVAILABLE



**1X USED VOLVO BL61B
(4X4) TLB**

S/NO: 1203288
YEAR: 2013
SMR: 5610 HOURS
GONE THOUGH FROM FRONT TO
BACK, NEW TYRES FITTED.



**1X USED KOMATSU PC220-8
TRACKED EXCAVATOR**

S/NO: 85712
ENGINE NO: 26642832
YEAR: 2016
SMR: 5080 HOURS



**1X USED JCB 406
FEL**

SERIAL NO: 2318993
YEAR: 2015 / SMR: 2850 HOURS
QUICK HITCH, BUCKET &
PALLET FORKS.
KOHLER ENGINE.

SHAWN MICHELL - 082 568 4033

Tel: 041-379 1717 / Fax: 041-379 4753

shawn@plantfinder.co.za



Follow & Like us on Facebook

facebook.com/ThePlantFinder

WWW.PLANTFINDER.CO.ZA

www.espa.co.za

ESP THE PROVEN ALTERNATIVE



MULTI-BRAND parts suitable
for **KOMATSU**
EARTHMOVING machinery

BENEFIT FROM OUR 9 MONTHS WARRANTY PERIOD ON NEW PARTS

ESP Johannesburg
Tel: (011) 398-1700

ESP Benoni
Tel: (011) 845-2911

ESP Pretoria
Tel: (012) 804-6706

ESP Middelburg
Tel: (013) 246-2520

ESP Pinetown
Tel: (031) 705-4200

ESP Cape Town
Tel: (021) 945-1030

ESP Port Elizabeth
Tel: (041) 484-4575

ESP Bloemfontein
Tel: (051) 432-4501

ESP Kimberley
Tel: (053) 831-8349



ISO 9001 Certified

Manufacturers' names, numbers, symbols and descriptions are used for reference purposes only and it is not implied that any part listed is the product of the manufacturers.

www.espa.co.za

ESP THE PROVEN ALTERNATIVE



MULTI-BRAND parts suitable
for **KOMATSU**
EARTHMOVING machinery



BENEFIT FROM OUR 9 MONTHS WARRANTY PERIOD ON NEW PARTS

ESP Johannesburg
Tel: (011) 398-1700

ESP Benoni
Tel: (011) 845-2911

ESP Pretoria
Tel: (012) 804-6706

ESP Middelburg
Tel: (013) 246-2520

ESP Pinetown
Tel: (031) 705-4200

ESP Cape Town
Tel: (021) 945-1030

ESP Port Elizabeth
Tel: (041) 484-4575

ESP Bloemfontein
Tel: (051) 432-4501

ESP Kimberley
Tel: (053) 831-8349



ISO 9001 Certified

Manufacturers' names, numbers, symbols and descriptions are used for reference purposes only and it is not implied that any part listed is the product of the manufacturers.

www.espa.co.za

ESP THE PROVEN ALTERNATIVE



MULTI-BRAND parts suitable
for **KOMATSU**
EARTHMOVING machinery

BENEFIT FROM OUR 9 MONTHS WARRANTY PERIOD ON NEW PARTS

ESP Johannesburg
Tel: (011) 398-1700

ESP Benoni
Tel: (011) 845-2911

ESP Pretoria
Tel: (012) 804-6706

ESP Middelburg
Tel: (013) 246-2520

ESP Pinetown
Tel: (031) 705-4200

ESP Cape Town
Tel: (021) 945-1030

ESP Port Elizabeth
Tel: (041) 484-4575

ESP Bloemfontein
Tel: (051) 432-4501

ESP Kimberley
Tel: (053) 831-8349



ISO 9001 Certified

Manufacturers' names, numbers, symbols and descriptions are used for reference purposes only and it is not implied that any part listed is the product of the manufacturers.

www.espa.co.za

ESP THE PROVEN ALTERNATIVE



MULTI-BRAND parts suitable
for **KOMATSU**
EARTHMOVING machinery



BENEFIT FROM OUR 9 MONTHS WARRANTY PERIOD ON NEW PARTS

ESP Johannesburg
Tel: (011) 398-1700

ESP Benoni
Tel: (011) 845-2911

ESP Pretoria
Tel: (012) 804-6706

ESP Middelburg
Tel: (013) 246-2520

ESP Pinetown
Tel: (031) 705-4200

ESP Cape Town
Tel: (021) 945-1030

ESP Port Elizabeth
Tel: (041) 484-4575

ESP Bloemfontein
Tel: (051) 432-4501

ESP Kimberley
Tel: (053) 831-8349



ISO 9001 Certified

Manufacturers' names, numbers, symbols and descriptions are used for reference purposes only and it is not implied that any part listed is the product of the manufacturers.

NOW AVAILABLE FROM



**INTERSTATE
McBEE**



CEP
Capital Equipment Parts



**REMANUFACTURED
INJECTORS FOR**

**CAT[®] 3500
SERIES ENGINES**

Capital Equipment Parts

Tel: +27 11 568 4215

www.capiparts.co.za

Email: info@capiparts.co.za



Interstate-McBee

Tel: 216-881-0015

www.interstate-mcbee.com

sales@interstate-mcbee.com



100% BRAND NEW NOZZLES

- ◆ FOR PEAK PERFORMANCE
- ◆ LOWER EMISSIONS
- ◆ BETTER FUEL ECONOMY

TRIM FILE CD INCLUDED


- ◆ FOR BALANCED INJECTORS
- ◆ FINE-TUNED ENGINE

©Cat is a registered trademark of Caterpillar, Inc. and does not imply that the item/s above are a product of said manufacturer.

CEP
Capital Equipment Parts

Your Best source for
affordable genuine OEM surplus,
OES and aftermarket replacement
CAT® and **CATERPILLAR®** parts.



 **Euroricambi**

 **INTERSTATE-McBEE**

**BBBEE
LEVEL
2**

Mining Machine Parts Specialists

PARTS YOU CAN TRUST

TRUST

011 568 4215 | info@capiparts.co.za

www.capiparts.co.za


BLACK CAT
WEAR PARTS

 **SEARS
SEATING**
WORK HARD. WORK COMFORTABLY.

 **Euroricambi**

 **INTERSTATE-McBEE**


BLACK CAT
WEAR PARTS

 **MODENA
PARTS**

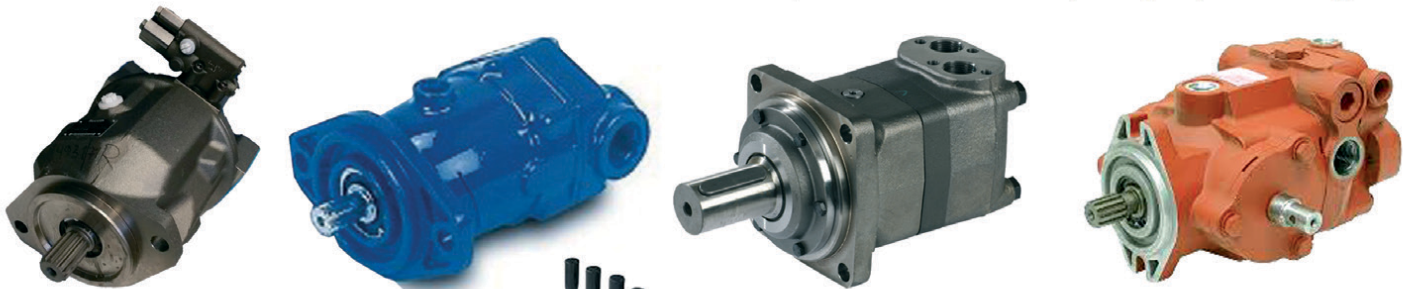


KDH Hydraulics specialize in the repair and supply of **Hydraulic pumps, Motors & Valve banks**

KDH
HYDRAULICS

Tel: (011)762-9001/2
Fax: 0867581303
Mobile A/H: 071 678 3746
Email: ricus@kdhhydraulics.co.za

Cnr Quellerie St & Randfontein Rd, Roodepoort, Johannesburg, Gauteng



EXCHANGE UNITS

KAWASAKI REXROTH

K3V 280 DT A10V60
K3V 180 DT A20V60
K3V 112 DT A10V74
K3V 280 SH A10V71



LIEBHERR – A4VG71

VARIOUS VOLVO ADT HYDRAULIC PUMPS
VARIOUS SUNDSTRAND HYDROSTATIC PUMPS & MOTORS



Repairs on all of the following major brands

- Atlas Copco
- Bell Equipment
- Caterpillar
- Liebherr
- Doosan
- Hitachi
- Komatsu
- Sumitomo
- Kawasaki
- Sandvik
- Bobcat
- Powerscreen
- Terex
- Finlay
- Aard Mining Equipment
- GHH
- Case
- ASA-Lift
- John-Deere
- Volvo

We also supply Gear pumps and motors according to application specifications and requirements.

www.kdhhydraulics.co.za



EARTH MACH
 TEL: 017 843 2072
 CELL: 083 232 8713
 WWW.EARTHMACH.CO.ZA

MINING AND CONSTRUCTION EQUIPMENT



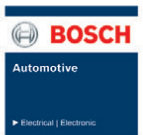
**SPECIALISING IN
 GALLION, DRESSER,
 KOMATSU, SEM &
 CATERPILLAR**



MACS
 auto
 www.macsauto.co.za



**REPAIRS ON ALL TYPES OF EQUIPMENT
 CUMMINS ENGINE CONVERSION ON KOMATSU
 TLB'S / REPAIR & SUPPLY OF NEW RADIATORS
 BREAK & CLUTCH REPAIRS / GENERAL REPAIRS
 & REBUILDING / AUTO ELECTRICAL REPAIRS
 & REWIRING / FUCHS OILS & GREASES /
 FIELD SERVICE REPAIRS**



SEM

A Caterpillar Brand



**THE PERFORMANCE YOU NEED,
 THE SUPPORT YOU EXPECT**

OTHER EQUIPMENT



GENIUNE SEM PARTS QUALITY AT ITS BEST

Steyn St. 34, Carolina, 1185.
 PO Box 1446, Carolina 1185
 Tel. (017) 843 2072 Fax. 086 732 1739
 Cell. 083 232 8713

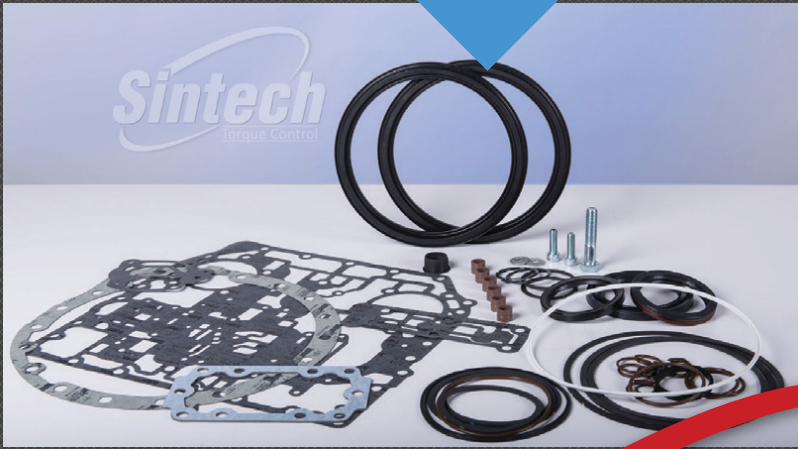
chris@earthmach.co.za
www.earthmach.co.za
 VAT REG No. 4280260417
 BBEE Level 2



ALLISON
TRANSMISSION
DISCS



ALLISON
SEAL KITS



Sintech

ORIGINAL
EQUIPMENT
SUPPLIER

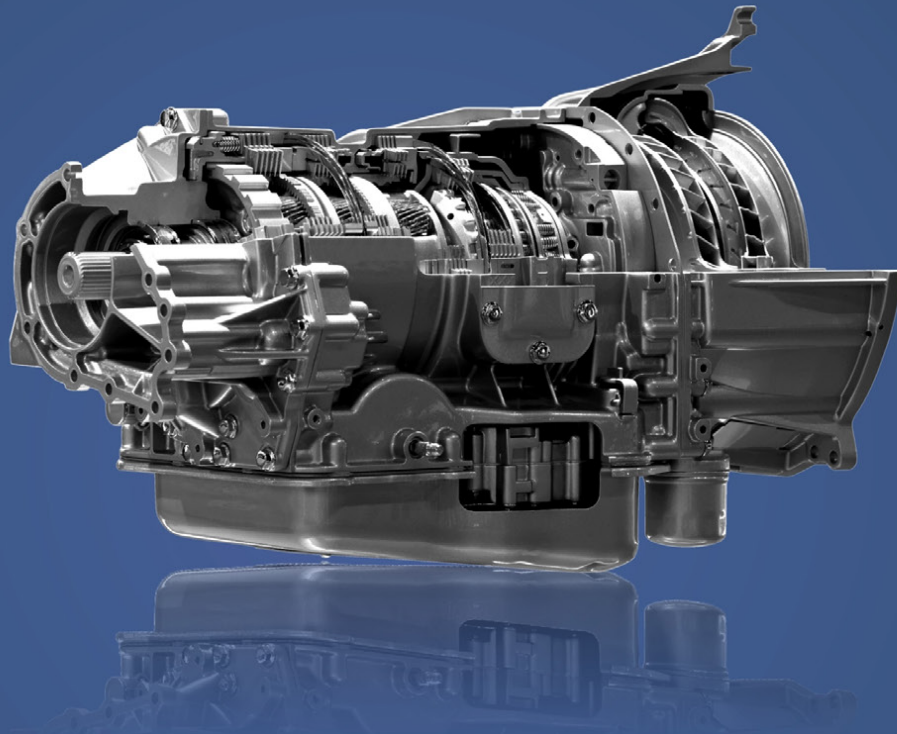


www.sintech.co.za

+27 (0)11 823 2359

TRANSMISSIONS

REBUILDING EARTHMOVING TRANSMISSIONS SINCE 2001



Our brand new specialised facilities boast complete rebuild departments for Transfer cases, Transmissions, Differentials and Hydraulics, making us your one-stop-shop for all earthmoving driveline requirements.

Our Dyno Testing facilities ensure that our re-build units are fully functional and tested before they are dispatched to you.

Whether you need a single part, a complete re-build or a service exchange unit, we keep your plant in motion.



KEEPING YOUR PLANT IN MOTION

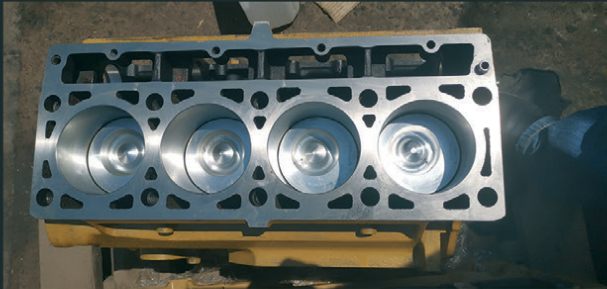
info@pttech.co.za • www.pttech.co.za • TEL: +27 11 022 8570 • FAX: +27 86 615 9011
NEW ADDRESS: 529 Pretoria Road, Fairleads, Benoni

GOOD USED EARTHMOVING PARTS AND EQUIPMENT

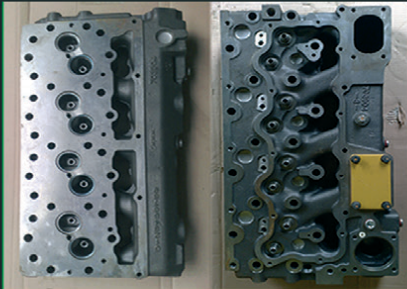


Tel: (011)894-6192 / (011)894-3377
Fax: (011)894 7914
barney@stmmining.co.za
donovan@stmmining.co.za

Office Hrs: Mon-Fri 07h00-17h00



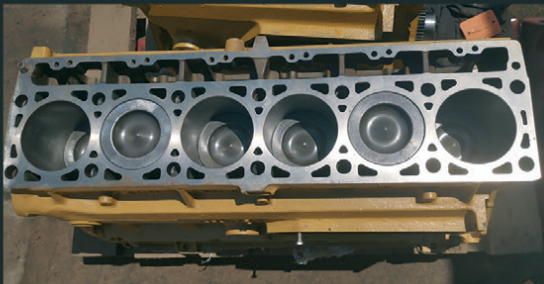
3114DI RECON SUB



HEADS TESTED & RECONDITIONED
3304 / 3306 / 3204 / 3116 / 3406 / 3412 / C9 / C13



REMAN SUB FROM CAT C9



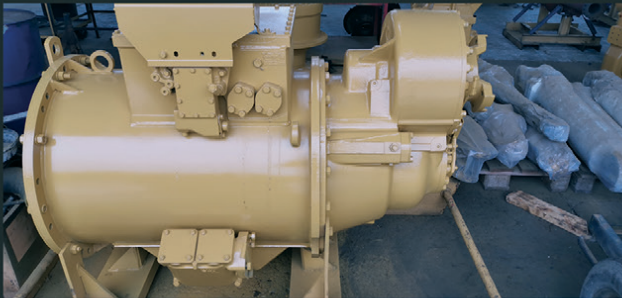
RECON 3126DI SUB



REMAN 3126 HEADS



D10T RECON
SERVICE EXCHANGE FINAL DRIVES



RECON 789C TRANSMISSION



CAT 140G TRANSMISSION
RECON SERVICE EXCHANGE



CAT 140G DIFF
RECON SERVICE EXCHANGE



D11R
FINAL DRIVE



988F-2 RECON
S/EXCHANGE T/CONVERTER



3412DI
REMAN SUB



D9T RECON FINAL DRIVE
SERVICE EXCHANGE

**STRIPPED
ENGINES**

3304/6
3204
3126
3406
3408
3412
3508
3512
3516

C6.4
C7
C9
C11
C13
C15
C18
C27
C32

MACHINES

EXCAVATORS

225
317B
318B
320B
325B
330B
320D
323D
330D

LOADERS

920
930
936G
938G
950A/H
966G
980F/G
988B

www.stmmining.co.za

GOOD USED EARTHMOVING PARTS AND EQUIPMENT

STM

MINING EQUIPMENT PTY(LTD)

Tel: (011)894-6192 / (011)894-3377

Fax: (011)894 7914

barney@stmmining.co.za

donovan@stmmining.co.za

Office Hrs: Mon-Fri 07h00-17h00



D375-5
STRIPPING FOR PARTS



FULLY REBUILT 140G GRADER
WITH WARRANTY



325C
STRIPPING FOR PARTS



980G FRONT END LOADER
FOR STRIPPING OR REBUILD



WA500-3 RUNNING BUT
FOR STRIPPING OR REBUILD



GOOD RUNNING 740
(B1P) SERIAL



GOOD RUNNING ZAXIS 200
UNDER 6 000 HRS



275-5
NO TRANSMISSION STRIPPING



938F
GOOD RUNNING MACHINE



950H
STRIPPING FOR PARTS



740 ADT DUMPERS X 2 RUNNING
FOR REBUILD OR STRIPPING

Full Depth Recycling

In the United States, a Wirtgen recycling train rehabilitated a highway at a depth of 20 cm in a single pass and without blocking the flow of traffic. In the process, the new W 380 CRi demonstrated its unmatched capabilities.

The four-lane Highway 123 in Pickens County was the scene of the first full-depth reclamation (FDR) operation on the roads maintained by the South Carolina Department of Transportation. Up to 20,000 vehicles a day, 15% of which were trucks, had made structural rehabilitation of the 11 km (7-mile) section of road unavoidable.

Road Widening Included

The construction project was also to be used to simultaneously widen the roadway to 4.40 m (14 feet 5 inches). “To this end, we initially milled off 60 cm (2 feet) along the inner edge of the roadway that borders the passing lane,” said Mike Crenshaw, president of the contractor King Asphalt, Inc. from Liberty, South Carolina, explaining the steps taken to prepare the road using two Wirtgen cold milling machines. Only then could the cold recycling train, led by the W 380 CRi, get rolling. The tracked cold recycler milled the damaged pavement at a width of 3.80 m (12 feet 6 inches) and a depth of 20 cm (8 inches) in a single pass. In the process, it simultaneously granulated the material while mixing in 2.3% foamed bitumen, 1% pre-spread cement, and 3 – 4% water.

Binding Agents Create Permanent Stability

“In FDR, stabilizing the layers recycled with foamed bitumen gives the sub-base the structural strength it needs to withstand recurring loads over decades of use,” explained Mark Stahl, director of recycling products for the Wirtgen Group in North America.

The Perfect Formula

The mix design plays a critical role in this process. This means determining the appropriate amount of binding agent to use. To do so, Wirtgen laboratory equipment – the WLB 10 S laboratory-scale foamed bitumen plant and the WLM 30 laboratory-scale mixer – was used to test six different material samples in advance in order to identify the ideal mix composition for this project. At the end of the structural rehabilitation project, the powerful W 380 CRi had recycled more than 102,000 metric tons (100,000 US tons) of asphalt in an environmentally friendly and high-quality manner using the perfect formula. Mike Crenshaw was delighted with the machine’s output of 427 metric tons (420 US tons) of recycled material per hour: “It worked like a charm. I’ve never seen another machine that can even come close. More than 7 metric tons (7 US tons) rolled over the discharge conveyor every minute.”

Variable Road Rehabilitation beyond the Machine’s Working Width

The W 380 CRi can even rehabilitate road surfaces that exceed the available working widths of 3.20 m (10 feet 6 inches), 3.50 m (11 feet 6 inches), and 3.80 m (12 feet 6 inches). In this case, the recycler scoops up the material on the side that was premilled by a cold milling machine and adds it to the mixing process. Thanks to a mixing capacity of 800 metric t/h (787 US t/h) in combination with rear loading onto a road paver with the appropriate buffer and paving screed, even very wide road surfaces can be rehabilitated in a single pass.

Versatility is Key

Mike Crenshaw also regards the new W 380 CRi’s versatile range of applications as a clear advantage for his company: “It can also be used as a cold milling machine. This is a major advantage. The machine can be fully converted in only two hours.”



NDUNA SPARES

YOUR ANSWER TO ALL
EARTH MOVING EQUIPMENT & SPARES

WE SPECIALIZE IN 320/330/374 & 390 COMPONENTS & SPARES
SERVICE EXCHANGE & OUTRIGHT

KOMATSU CYLINDERS | CAT CYLINDERS | VOLVO CYLINDERS | BELL CYLINDERS
WE KEEP STOCK ON A WIDE VARIETY OF G.E.T & BUCKETS
374/390/966/TLB/EC700/HITACHI 870



**CAT 740B
TRANSMISSIONS
TRANSFER BOX
FINAL DRIVES
STRUDS
HOIST PUMPS
BRAKE PUMPS
AND MANY MORE**

**BELL B40D
TRANSMISSIONS
CONTROLLERS
DIFFS
TRANSFER BOX**

**EC210 FINAL DRIVES
PC 300 FINAL DRIVES**

WE ALSO DO PLANT HIRE



FOR A QUOTE PLEASE CONTACT US ON 013 230 3852 / 071 352 6572



**OR COME & VISIT US AT
337 BERGSEING STREET,
STEELPOORT**

**ONE OF OUR FRIENDLY
CONSULTANTS
WILL BE HAPPY TO
ASSIST YOU**

YANMAR

WORLD RENOWN COMPACT EXCAVATORS

Models available
from 1 to 10 tons

- Powered by Yanmar
- Built by Yanmar
- Zero Tail Swing
- Hydraulic Quick Coupler
- PTO fitted standard
- Steel or rubber tracks
- Cab or ROPS canopy
- Airconditioner option
- Cylinder protection
- Dozer blade & boom swing
- Light & travel alarm
- 15 YRS IN SOUTH AFRICA

Western Cape
FORCE 8 CC (Importers)
Phone 021 535 1117
www.force8.co.za

Gauteng
RAPTOR PLANT SALES (PTY) LTD
Phone Clive on 073 500 3761
www.raptorplantsales.co.za

Eastern Cape
CHALK AIR CC
Phone 043 743 8855
Please speak to Zane

Mpumalanga
RUDAMANS (PTY) LTD
Phone 013 753 3631
www.rudamans.co.za

West Coast
WESKUS MEGANISASIE CC
Phone 027 213 3277
Kobus 081 415 4409

Breede River Valley
LANGEBERG GRONDWERKE CC
Phone 023 626 2563
Danie 084 491 0916

www.yanmar.co.za



20 A Pendoring Street
Brits Industrial Site
Brits, North West
0250
South Africa



**Machinery
Contractors**

Tel: +27 (012) 250 3534 / +27 (012) 250 8656
Fax: +27 (012) 250 2620 / +27 (012) 250 8958
Email: info@machinerycontractors.co.za

Web: www.machinerycontractors.co.za



POWERTRANS

THE REBUILD CENTRE

Tel: 032 459 5700 • 0861 POWERTRANS
Ricky 071 706 8759 • Raven 082 555 4925
info@powertrans.co.za • www.powertrans.co.za



Allison Transmission **CLARK** **VOITH** **CATERPILLAR** **TE** **BOSCH** **Telma** **Kirloskar** **DEUTZ** **JOHN DEERE** **BELL**

*All manufacturers names, numbers, symbols and pictures are for reference only. It does not imply that any of the parts are the product of these manufacturers.

SAUER DANFOSS

PV27 COMPLETE PUMP AVAILABLE



ALL OTHER PV SERIES
ARE AVAILABLE ON REQUEST

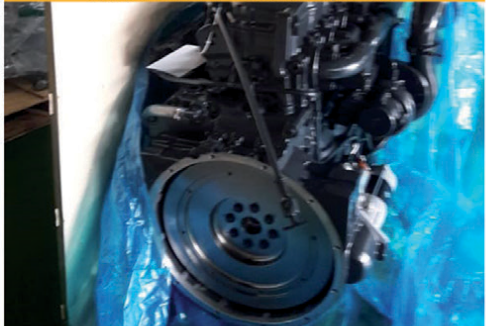
BELL

Bell Logger and Caneloader Parts



CUMMINS

BRAND NEW Cummins QSB 6.7



ARE YOU HASSLING FOR EXCAVATOR SPARES,
WE CAN HELP SOURCE PARTS **FOR YOU**

LEAD TIME 4-6 WEEKS FROM PAYMENT

WE BOAST THE BEST DYNO TEST EQUIPMENT FOR ENGINES
AND TRANSMISSIONS IN THE INDUSTRY.

PARTS FROM MAJOR SUPPLIERS SUITABLE FOR
DOZERS, EXCAVATORS, FRONT END LOADERS
AND ALL OTHER EARTHMOVING EQUIPMENT

A VISIT TO OUR FACTORY IS WELCOME ANYTIME

WE ARE AUTHORISED AGENTS FOR
(ALLISON TRANSMISSION, TELMA RETARDERS, BOSCH FUEL INJECTION , KIRLOSKR DIESEL ENGINES).



INJECTOR PUMP AND
INJECTORS



WE SUPPLY BRAND NEW AIRCOOLED
ENGINES FOR BELL EQUIPMENT LOADER,
WE ALSO HAVE A LARGE INVENTORY
OF REBUILT EXCHANGED UNITS



REXROTH PUMP
AND EATON PUMPS



FULL RANGE OF ALLISON
TRANSMISSION SERVICE
EXCHANGE UNITS IN STOCK

INDUSTRIAL PLANT SOLUTIONS

For all your...



ENGINES



C7 Short Sub, C15 Long Sub (on & off road), C4.4 Engine, C4.4 Sub Long, 3054C Sub Long, 3306DITA Ind, 3126B Sub 938G-2, 3126-Loader, C9-D7R recon engine on PEX, C15 Long block 980H, 3126B Sub

TRANSMISSION



D8N T. Converter, D8R T. Converter, D11R T. Converter, D4D Trans, D3C Transmission, D8N T.C, D4D Trans recon, D3C Trans recon, D8R Torq Conv, D5MTran, D8N Torq Conv, D275.5, D8N Tran, D8T T. Converter

FINAL DRIVES



D8R F.DRIVES & DIFF STEER D6R/H Finaldrive, 330B Finaldrive Hyundai Robex 180/200, PC200, D5M, D6R, 320B, SH480-5, PC200.6, D5M, D6R 320B

PUMPS



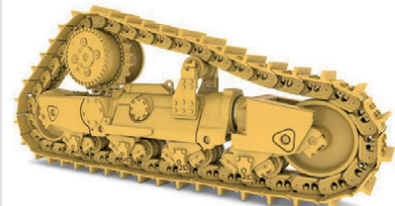
988F All pumps D8R Diff Steer pump, D8N Tran, C6.4Fuel, D8N Diff, Zaxis300.3 Hydraulic pump, 330B

BUCKETS



424D Rear bucket, 424D Front bucket, 928F, 920, PC200-7 Bucket, 320B, 320C, 320C, 320B, 330B,

MISCELLANEOUS



C7 Radiator cooler as new, D5G Cooler new, 3116 Recon head, C15 Recon head, ISX Cylinder head recon, C7 Cylinder head recon, Robex 180 Rollers, D4G cooler, 988H Diff Pinion, C13 Injectors, Tooling, Tracks, G.E.T. Controllers, Vacuum Pumps

New, used and reconditioned components - all makes.

If it's from your machine, we'll find a replacement!!

Contact Us:

✉ : sales@ipsglobal.net

f : [facebook.com/IndustrialPlantSolutions](https://www.facebook.com/IndustrialPlantSolutions)



WhatsApp Message
+27 (0)82 405 3494

Inspections & Assessments Also Done

EMS

Earthmoving Machine Sales



Jason Ward
+27 83 412 1077
jason@sa-ems.co.za

Mark
+27 82 907 9081
Tel: +27 31 777 1025



5 X BOBCATS
S130 AND S150
- +_5000 HOURS



1 X CAT 320D
2012 MODEL - 11000 HOURS



1 X 2010 CAT 416E
12 000 HOURS



1 X 2003 CAT 416D
11 000 HOURS

EMS

Earthmoving Machine Sales



Jason Ward
+27 83 412 1077
jason@sa-ems.co.za

Mark
+27 82 907 9081
Tel: +27 31 777 1025



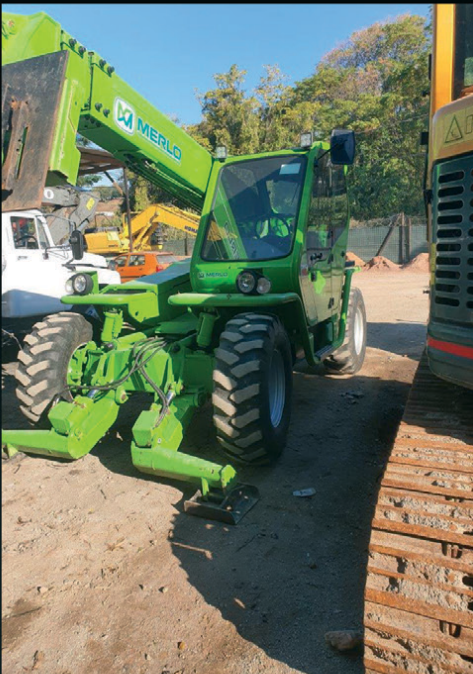
1 X 2017 CAT 428F
2400 HOURS



1 X CAT 320D
2009 MODEL - 8700 HOURS



1 X KOMATSU PC300
8300 HOURS - 2012 MODEL



1 X MERLO TELEHANDLER
RK35.13 2005 MODEL - 5000 HOURS



1 X MANITOU TELEHANDLER
MT1840 - 6000 HOURS



1 X KOMATSU PC220
6200 HOURS - 2014 MODEL



1 X BOBCAT S650
2014 MODEL - 4000 HOURS



The green standard for material handlers

Babcock has seen a steady stream of SENNEBOGEN modular material handling machinery delivered throughout South Africa over the past 12 months, as customers increasingly realise the benefits of these quality German-manufactured machines. With their characteristic green colour reflecting their environmentally friendly efficiency, SENNEBOGEN material handlers are suitable for a diverse range of applications and have garnered firm support in South Africa's steel mills, scrap metal, ports, pulp mill and saw mill industries, among others.

7 AND 8 SERIES

The 7 Series units are primarily suited to the pulp and saw mill environments for their pick and carry capabilities and ability to stockpile at heights, while the 8 Series units are ideal for use in other industries due to each modular material handling machine able to be custom-built to the client's specifications with an efficient design that assists in maintaining productivity. Undercarriage options range from mobile, crawler, rail, gantry and stationary, and can also include optimally raised units with pylon, while different quick-coupling systems and a large range of attachments highlight the machines' versatility.

Claude Delport, Sales Executive for SENNEBOGEN at Babcock, says that SENNEBOGEN's E-Series of material handling equipment presents customers with a choice of new-generation fuel-saving diesel engines or environmentally friendly electric motors, with the latter capable of running up to 100 000 hours before needing to be replaced. The state-of-the-art Tier 3 emission diesel engines have optimised engine settings for reduced fuel consumption and modern exhaust gas treatment for cleaner air. Electric motors provide operating cost reductions of up to 50% compared with conventional diesel engines, do not produce emissions, and operate at very low noise levels.

SENNEBOGEN 8 SERIES

Delport says that in the last two years Babcock has sold several 830R electric units to a large steel mill in Gauteng for their scrap processing and feeding of the melt pots division where they have been performing well. At a saw mill in KwaZulu-Natal, a customer is using an electric unit to pick and carry timber, stack and feed the mill. This customer opted for the 825-electric unit with a railway type undercarriage in order to suit existing infrastructure at the sawmill. The machine has handled the application extremely well, and the customer is impressed with its performance.

SENNEBOGEN 735E

Early this year Babcock delivered SENNEBOGEN 735E diesel units to a log yard and pulp mill where the customer required a machine capable of pick and carry and stockpiling at heights of up to 10 metres, as well as being able to tow a trailer. "The 735E meets these needs with an elevated cab providing the operator with unobstructed views," says Delport. Regarded as a true pick and carry machine, the 735E provides a rear-hinged boom for optimum weight distribution, high load capacities, compact measurements and small slewing radii for manoeuvring in narrow spaces between stacks, and a stacking height of approximately 10 metres. With a robust undercarriage and two powerful, quiet travel motors, the 735 can pull up to 30 tonnes on a trailer, and a rear boom provides unobstructed views from the cab. As with all SENNEBOGEN machines, the 735E offers easy access to service points, maximum operator comfort and safety, and fuel-saving efficiency that lowers operating costs and environmental impact. Its towing function permits the transport of more product per trip, thus increasing productivity and reducing operating costs.

SENNEBOGEN 730E

The compact SENNEBOGEN 730E has also featured on Babcock's sales list and is ideal for sawmill sorting line applications and offloading of logs and feeding the mill. Recently, Babcock replaced a well-used 730E unit which was first purchased in 2006 by a sawmill in Mpumalanga. Delport says the customer has long favoured the capabilities of the 730E and has kept to the brand and model when deciding to replace older units.

The 730E runs on tyres, making it mobile on site, while its 360-degree rotation makes it extremely versatile for loading and offloading of trucks and rail wagons, and sorting and stacking in confined spaces.

A formidable driving machine with high safe working loads, the SENNEBOGEN 730 impresses with its powerful drive, convenient reach, and compact measurements. Thanks to a 360-degree slewing upper carriage, the material handler can navigate narrow spaces without the need for complex turning manoeuvres.

WIDE RANGE OF MODELS AND AFTER MARKET SUPPORT

Featuring high performance, uncomplicated quality components, and long product service life, the SENNEBOGEN machinery available from Babcock includes a range of material handlers, duty cycle cranes, lattice boom crawler cranes, port cranes, and mobile harbour cranes with a lifting capacity of 125 tonnes. All SENNEBOGEN machinery is backed by Babcock's nationwide network of service centres and aftermarket support, offering customers around-the-clock local support that can be quickly and easily accessed.



Five ways to boost the availability of your mining equipment

It could cost a mine operator over a thousand dollars per hour for a mining dump truck or a mining excavator not to be working. With such high costs associated with downtime, there is no question how important it is to improve equipment availability within the mining industry. Let's define equipment availability as the duration the equipment is ready when it matters. This is important for many applications, including you being able to do something personal like drive your car when you need it. However, what makes mining exceptional is the combination of downtime costs and the continuous need for the equipment to operate. A typical mine works 24/7 throughout the year, for years to decades. A mining haul truck could work for over 600 hours a month, which is the equivalent of two years of driving for an average US driver.

Given the importance of equipment availability for miners, let's get into five impactful ways to boost its availability.

1. Begin with the engines that offer the highest quality

Miners benefit from working with partners that offer extensive aftermarket capabilities, yet the best starting point for mine operators to maximise machine availability is to have reliable engines. This is a proactive approach and focuses on avoiding engine issues instead of trying to repair them. Here is a real-life example on how engine reliability makes a difference. A customer from an Arizona, US mine site had concerns because their non-Cummins engines powering their haul trucks were not performing at the quality needed. The customer decided to switch to Cummins QSK60 engines and consequently reported a 43% improvement in mean time to failure and a 69% improvement in mean time to repair.

2. Minimise downtime with access to plentiful spare engines

Mining operators can reduce their downtime and prevent financial losses by leveraging spare engines while their primary engines are going through planned or unplanned service. You do not need to buy and own these extra engines. Instead, you can work with partners capable of offering this service to you.

Cummins offers over 1 000 support engines ready to be shipped to our partners in the mining industry. This number is higher than the annual engine production of some of the smaller mining engine manufacturers.

3. Reduce rebuild time by having access to capable and nearby rebuild centres

Rebuilding an engine instead of buying a new one helps mining operators reduce the total lifecycle cost of their equipment. Larger engine manufacturers offer a rebuild service through dedicated facilities. The location and capability of these facilities are critical, since an average mining dump truck engine weighs 9 072 kg, equivalent to five mid-size passenger cars combined. Cummins has 16 Master Rebuild Centres around the world capable of rebuilding high horsepower engines. The certified rebuild process, from teardown to final inspection, is a detailed 600-step procedure to ensure the highest quality.

4. Have trained technicians ready for you

Even the most durable engines need planned and, in some cases, unplanned maintenance. Mine sites, with their remote locations, present a unique challenge for technicians to respond in a rapid manner. One-way Cummins addresses this challenge, beyond having 1 000+ trained technicians, is to offer on-site aftermarket support for customers that aim to boost equipment availability. The Julong Copper Mine is a great example, showing how Cummins goes to great heights by maintaining over ten aftermarket support team members on-site, located at an altitude of 5 500 m.

5. Leverage advanced analytics and telematics

How much money would you have saved if you knew what component to change and when to change it? While you are reflecting on this, take a look at how a Chilean mine operator saved over \$1 million and minimised downtime by taking advantage of telematics and data-enabled services. Condition-based maintenance, offered through PrevenTech, is at the core of telematics and helps miners improve equipment availability by enabling miners to prevent unscheduled maintenance and to better plan scheduled maintenance. "Availability is and will continue to be a key driver for the mining industry to deliver superior financial performance. Miners interested in boosting their equipment's availability can seek partners that can bring strengths in spare engines and parts accessibility, capable rebuild facilities and readiness of technicians," says Kevin Spiller, Director of Mining Business at Cummins.

Into a goldmine: How South Deep achieved its dramatic turn-around in 12 months *OIM Consulting contributes to transforming South Deep Mine to cash-positive*

Like many other sectors in South Africa the mining industry was severely impacted by the nation-al lockdown. Minister of Mineral Resources and Energy, Gwede Mantashe, exhibited a great un-derstanding of the need to strike a balance between ensuring the health of employees, and main-taining some degree of business continuity for the mining industry - which remains a significant contributor to South Africa's economy, and a major direct employer. In line with the measures announced by the Minister on 25 March 2020, mining operations - particularly deep-level mining, which is generally considered labour-intensive - were scaled down significantly.

Gold Fields' South Deep Mine, located on the West Rand, was placed on care and maintenance in April and in compliance with government regulations, operated well below its full labour com-plement for the remainder of the lockdown period. Despite this, South Deep continued to show progress on most of its operational measures during the first half of 2020, compared to the same period in 2019, largely due to an organisational culture and capability alignment process.

Prior to the outbreak of the COVID-19 pandemic, Gold Fields announced two consecutive cash-positive quarters at South Deep Mine at the end of 2019 and recorded a full year of cash flow posi-tive results, while meeting production guidance.

Since acquiring South Deep in 2006, Gold Fields has experienced a number of organisational chal-lenges and setbacks, preventing it from operating as a modern, bulk, mechanised and profitable mine. To address these challenges, Gold Fields embarked on a strategic transformation journey which included an organisational restructuring exercise, followed by a broader cultural and capability alignment process.

South Deep engaged Cape Town-headquartered business consultancy, OIM Consulting, to support the cultural and operating aspects of the process.

Run by a core management team with a wealth of experience across various sectors including mining, retail, financial and manufacturing, OIM Consulting services various blue-chip compa-nies, specialising in enhancing organisational performance through operational optimisation and people management and development. OIM Consulting's four-pillared process is centred around what it considers to be the beating heart of any organisation, its front-line leaders. Explains Arjen de Bruin, OIM Consulting's Managing Director: "We've realised that the successful execution of any business plan relies on supervisory effectiveness, yet organisations typically do not place enough effort on building this capability and capacity, and changing front-line leader behaviour.

"Our process addresses cultural change, the identification and building of new capabilities, and performance assessment, management and improvement, with a pivotal focus on the supervisor as key to sustaining this improvement."

De Bruin notes the establishment of a 'coaching culture' as integral to the process. "We maintain that 80% of our time needs to be spent on the shop floor, mentoring line managers to continue driving change upon our eventual exit. This is essential to entrench new skillsets through ongoing reinforcement."

The initial results at South Deep are extremely encouraging, with the mine reporting a profit at the end of the initial 12-month period. More revealingly are the metrics which demonstrate signifi-cant operational improvement; the mine saw a 41% increase in gold production when comparing H1 2019 with H2 2019. Its overall productivity in 2019 improved by 30% to 26.7 tonnes per em-ployee, costed from 20.5 tonnes per employee in 2018. The overall efficiencies for development and distress improved to 60m/rig per month in 2019 from 39m/rig per month in 2018, all contrib-uting in turning the net loss made in 2018 to a net profit of over R104 million in 2019. As de Bruin points out, it is important to note that "these results were achieved with approximate-ly 30% less staff and equipment than the year before."

Says Martin Preece, Executive Vice President at Gold Fields, "We've seen a remarkable im-provement in most production metrics during 2019, resulting from a culmination of initiatives centred around our people, including organisational culture, processes, systems and technical im-provements; a process supported by OIM."

De Bruin attributes the integration of culture, capabilities and practices as the foundation that un-derpins all operational improvements. "In order to improve output and efficiencies, one needs to start with changing mindsets, through developing appropriate and relevant skillsets and toolsets.

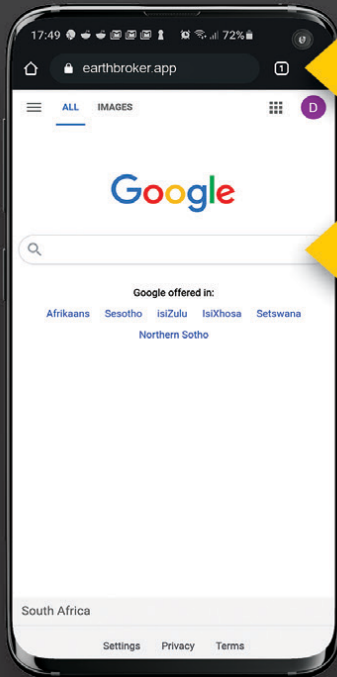
"As a world-renowned leader with operations that span three continents, we are very proud to partner with Gold Fields, and are honoured to have been granted the opportunity to support them in driving their organisational goals."

earthbroker^{publication}

Earthbroker has launched an app allowing you access to our Quick reference & our digital magazine! See below on how you can download it or use the link: <https://earthbroker.app>

How to download our app

FREE FOR ADVERTISERS | APP FOR MOBILE USE ONLY



✓ Enter 'earthbroker.app' here

1 Open Google / Safari on your mobile phone.

✗ Not in search

Access to our **Quick Reference** and our latest eMag at a push of a button

FREE DOWNLOAD

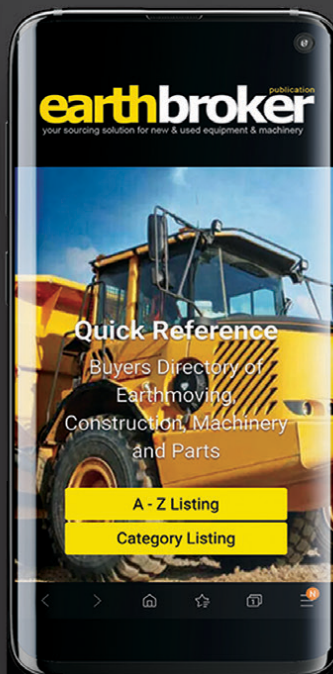
2 Follow prompts to add to home screen and allow notifications if you would like.

Now follow the instructions below on how to use our app once you have saved a shortcut on the home screen.



STEP 1

Click the shortcut once the app has downloaded



STEP 2

Choose A - Z or Category Listing



STEP 3

From here you can call the company directly, email and get directions

For info on how to advertise and get your company listed please contact Janine - 083 456 4027



earthbroker

your sourcing solution for new & used equipment & machinery

- Why deal with different people each month when you can deal with the same friendly people you always deal with.
- We are proudly South African. Support your country who understand your needs.
- WE are ABC Accredited - this means we do print the amount we say we print. No pie in the sky number. We send direct to the correct people in the industry.
- We have our PAMMS certificate...This means our database has been checked and validated.
- Your advert receives FREE online exposure on our website with our online magazine and the link to the magazine is on our App, Facebook, Instagram and LinkedIn.
- We design FREE of charge and all changes are done FREE of charge.
- NO contracts to be signed.
(Just a full calender months notice is required for cancellation)



Audit Bureau of Circulations
of South Africa



**We have an
online magazine
in which your
advert is
advertised free
of charge**

We offer excellent service and design.

**Should you have people/companies you would like
added to our database , we will happily do
that should they not already be on our database.**

Please call us for a prompt response and great service!

For further info on how to get your company listed in the Earthbroker please call...**Janine - 083 456 4027**



HITACHI ZX670 LCR-3

2011 / 20 000 HRS

082 780 0084 | 021 903 2667
bradley@bmhtradinginternational.com



HITACHI ZX470 LCR-5G

2013 / 12 600 HRS

082 780 0084 | 021 903 2667
bradley@bmhtradinginternational.com



CAT D9R

2013 MODEL
LOW HOURS / NEW
SERVICED
CALL FOR PRICE

THOMAS MITTAG
072 545 6223
info@mae-equipment.com
www.mae-equipment.com



D8T DOZER

2011 model
low hours / import unit
ZAR 3.700.000

THOMAS MITTAG
072 545 6223
info@mae-equipment.com
www.mae-equipment.com



KUBOTA U50-5

2017 / 300 HRS

082 780 0084 | 021 903 2667
bradley@bmhtradinginternational.com



CAT773F WATERBROWSER

2008 model
Call for Price

THOMAS MITTAG
072 545 6223
info@mae-equipment.com
www.mae-equipment.com



LIEBHERR 538 LOADER

2013 MODEL
(AUTOMATIC GREASING
SYSTEM AND L5 TYRES)
R 425 000 + VAT

082 454 0934
charlesjnr@transand.net
044 695 0105



HITACHI ZX330LC-5G

2013 / 7 000 HRS

082 780 0084 | 021 903 2667
bradley@bmhtradinginternational.com



BELL B20D 18000 LTR

Watercart x 3

Naren Birdju
+27 82 859 0766
plantsales@andru.co.za



BELL B20C DUMPER

(Not Registered)
R 420 000 + VAT

082 454 0934
charlesjnr@transand.net
044 695 0105

For further info on how to get your company listed in the Earthbroker please call...**Janine - 083 456 4027**

For further info on how to get your company listed in the Earthbroker please call...Janine - 083 456 4027



**BELL B25D
ADT X 1**

Naren Birdju
+27 82 859 0766
plantsales@andru.co.za



**2 X KOMATSU
D51EX-22
DOZER**

Stuart McKenzie
082 558 7901
smj@mckenzieplant.co.za
www.mckenzieplanthire.co.za



**MERCEDES-BENZ
ATEGO
TIPPER TRUCK**

(2001 Model)
R440 000 +VAT

082 454 0934
charlesjnr@transand.net
044 695 0105



**KOMATSU GD675-5
/ GD655-3
GRADERS**

Naren Birdju
+27 82 859 0766
plantsales@andru.co.za



**MERCEDES-BENZ
POWERLINER 2629**

(1985 Model)
R 250 000 + VAT

082 454 0934
charlesjnr@transand.net
044 695 0105



**KOMATSU
WA480-6 / 430-6
FEL X 4**

Naren Birdju
+27 82 859 0766
plantsales@andru.co.za



1 X CAT 320D

2012 model
11000 hours

Jason Ward
+27 83 412 1077
jason@sa-ems.co.za



**KOMATSU
PC270 - 7
EXCAVATOR X 1**

Naren Birdju
+27 82 859 0766
plantsales@andru.co.za



1 X CAT 320D

2009 model
8700 hours

Jason Ward
+27 83 412 1077
jason@sa-ems.co.za



**1 X KOMATSU
PC300**

8300 hours
2012 model

Jason Ward
+27 83 412 1077
jason@sa-ems.co.za

For further info on how to get your company listed in the Earthbroker please call...Janine - 083 456 4027

For further info on how to get your company listed in the Earthbroker please call...**Janine - 083 456 4027**



BELL B20C

Mechanically good condition.
Very well priced.
R145 000

Rodney
0731039582
rodney@marodew.co.za



STRIPPING HITACHI 870/3

Good Runner stripping for
spares. Parts still in excellent
condition.

Rodney
0731039582
rodney@marodew.co.za



CAT992G FEL FOR SALE

Beautiful CAT992G FEL for sale.
2004 model with 33000 hrs. Bucket
recently refurbished. Transmission
and rear centre portion recently
redone/overhauled.

Call Charl on
082 451 7697
charlo@dego.co.za



1X USED KOMATSU PC220-8 TRACKED EXCAVATOR

S/no: 85712
Engine no: 26642832
Year: 2016
SMR: 5080 hours

Shawn Michell 082 568 4033
shawn@plantfinder.co.za
www.plantfinder.co.za
TEL: 041-379 1717



KAWASAKI Z90-2

For sale
R480 000,00 +VAT

Adriaan 076 127 2977
Marc 072 530 7373
Rodney 073 103 9582



1X USED ATLAS WEYCOR AR60 FEL

Year: 2017 / SMR: 2268 hours
Quick hitch, bucket & pallet forks.
Auxiliary Hydraulics

Shawn Michell 082 568 4033
shawn@plantfinder.co.za
www.plantfinder.co.za
TEL: 041-379 1717



1X USED CAT 226B2 SKIDSTEER LOADER

Serial no: MJH15131
Year: 2010 / SMR: 5650
Quick hitch, bucket &
pallet forks.

Shawn Michell 082 568 4033
shawn@plantfinder.co.za
www.plantfinder.co.za
TEL: 041-379 1717



1X USED JCB 406 FEL

Serial no: 2318993
Year: 2015 / SMR: 2850 hours
Quick hitch, bucket &
pallet forks. Kohler Engine.

Shawn Michell 082 568 4033
shawn@plantfinder.co.za
www.plantfinder.co.za
TEL: 041-379 1717



1X USED KOMATSU D61EX-23 TRACKED DOZER

S/no: B50067
Year: 2015
SMR: 10000 hours
PAT blade, with 3 shank ripper.

Shawn Michell 082 568 4033
shawn@plantfinder.co.za
www.plantfinder.co.za
TEL: 041-379 1717



1X USED JCB 406 FEL

Serial no: 2318993
Year: 2015 / SMR: 2850 hours
Kohler Engine.

Stuart McKenzie
082 558 7901
smj@mckenzieplant.co.za
www.mckenzieplant.co.za

For further info on how to get your company listed in the Earthbroker please call...**Janine - 083 456 4027**

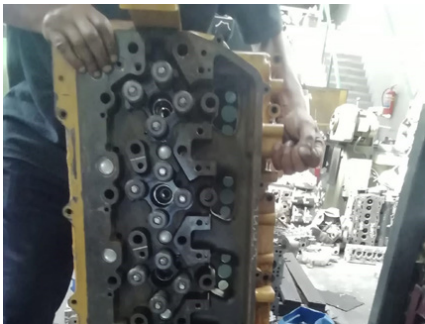
For further info on how to get your company listed in the Earthbroker please call...Janine - 083 456 4027



CATERPILLAR 320D

R950 000,00 + VAT

Dewald Hattingh: +27(0) 72 547 2198 +27(0) 11 973 3737
info@atlasmasjiene.co.za



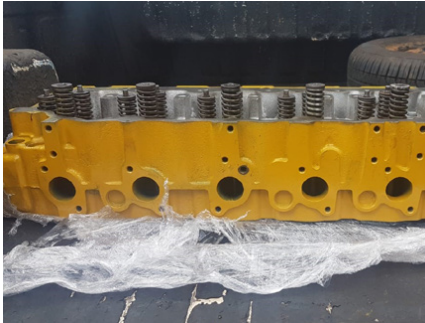
C11/13 COMPLETE HEAD

WhatsApp Message
+27 (0)82 405 3494
sales@ipsglobal.net



**D5G
NEW COOLER
GROUP**

WhatsApp Message
+27 (0)82 405 3494
sales@ipsglobal.net



**3126B
COMPLETE HEAD**

WhatsApp Message
+27 (0)82 405 3494
sales@ipsglobal.net



930 DIFF

WhatsApp Message
+27 (0)82 405 3494
sales@ipsglobal.net



C6.6 LONGBLOCK

WhatsApp Message
+27 (0)82 405 3494
sales@ipsglobal.net



**D85-18 NEW
TRACKGROUPS**

WhatsApp Message
+27 (0)82 405 3494
sales@ipsglobal.net



**3126
ENGINE**

WhatsApp Message
+27 (0)82 405 3494
sales@ipsglobal.net



**CATERPILLAR 16H
R2 500 000,00 + VAT**

Dewald Hattingh: +27(0) 72 547 2198 +27(0) 11 973 3737
info@atlasmasjiene.co.za

For more info on advertising your machine or spares in the classifieds please call Janine on 083 456 4027
janine@earthbroker.co.za

For further info on how to get your company listed in the Earthbroker please call...Janine - 083 456 4027

Agriculture / Forestry

Bell Equipment
Filter Centre
LNE Agri-Earth

Attachments

BMH Trading International
CTC Plant Company (PTY) Ltd
Rhino Excavator Hammers
Plant Finder
Machinery Contractors

Buckets

INMINE
Industrial Plant Solutions
Machinery Contractors
Paramount Equipment
STM Mining
TJB Earthmoving Parts
Wearpact

Crushing

Marsay Equipment
Transand

Dyno Testing

Earthmoving Specialist
Mzantsi Transmissions
Power Transmission Technology

Exhausts

Rustpet Exhausts

Engineering

All Africa Supplies
Earthmoving Specialist
Earthmach
East Coast Gears
Gears for Africa
Grind Right Engineering
KDH Hydraulics
P&R Earthmoving
TJB Earthmoving Parts

Gearbox / Transmissions

East Coast Gears
Mzantsi Transmissions
P&R Earthmoving
Power Transmission Technology
Sintech
Vortex

Gears

East Coast Gears
Gears for Africa

G.E.T / Undercarriage

Blumaq
Capital Equipment Parts
Centrax
ESP
ITR Africa
Industrial Plant Solutions
Mid Plant Services
P&R Earthmoving
Paramount Equipment
Spec-Cast Wear Parts
STM Mining
TJB Earthmoving Parts
Tractor Grader Spares
Wearpact

Hydraulics

Industrial Plant Solutions
KDH Hydraulics
Mid Plant Services
P&R Earthmoving
Power Transmission Technology
One Stop Procurement
TJB Earthmoving Parts

Lifting Equipment

Liugong
Spider Mini Cranes SA

Lubricants & Oils

Bell Equipment
Earthmach
Filter Centre

Machine Hire

Amalgamated Plant
BLC Plant Company
Rhino Excavator Hammers
Spider Mini Cranes SA

New Machines

Barloworld SEM
Bell Equipment
Earthmach
Kemach JCB
Lovol Construction
Liugong
Powertrans
Spider Mini Cranes SA

New Parts

Bell Equipment
Blumaq
CTC Plant Company
Capital Equipment Parts
Centrax
East Coast Gears
ESP
Filter Centre

New Parts

ITR Africa
 Industrial Plant Solutions
 LNE Agri-Earth
 Lovol Construction
 Machinery Contractors
 Mid Plant Services
 One Stop Procurement
 Powertrans
 Prime Plant
 Queensburgh Plant Sales
 Rhino Excavator Hammers
 P&R Earthmoving
 Paramount Equipment
 Rustpet Exhausts
 Shin-Li Trading
 Spec-Cast Wear Parts
 STM Mining
 Shin-Li Trading
 Sintech
 Tractor Grader Spares
 Wearpact
 WEICHI SEM Parts

Pumps

All Africa Supplies
 Blumaq
 Industrial Plant Solutions
 Mid Plant Services
 Shin-Li Trading

Seats / Upholstery

The Seat Connection

Services

Bell Equipment
 CTC Plant Company
 Dura Sales
 Earthmach
 Gears for Africa
 INMINE
 ITR Africa
 LNE Agri-Earth
 Lovol Construction
 KDH Hydraulics
 Power Transmission Technology
 Prime Plant
 Queensburgh Plant Sales
 Marsay Equipment
 Mid Plant Services
 Vortex Transmissions

Turbos

Industrial Plant Solutions
 Turboworks

Torque Convertors

ITR Africa
 Industrial Plant Solutions
 One Stop Procurement
 Sintech

Tyres

Associated Equipment / Vendel Civils

Used Machines

Andru Mining
 Atlas Masjiene
 All Africa Supplies
 Amalgamated Plant
 Associated Equipment / Vendel Civils
 Barloworld SEM
 BLC Plant Company
 BMH Trading International
 CTC Plant Company
 Dozer
 Dura Equipment Sales
 Earthmach
 Earthmoving Machine Sales
 IMIME
 Mae Equipment
 Marsay Equipment
 McKenzie Plant Sales
 Mid Plant Services
 Plant Finder
 Powertrans
 Queensburgh Plant Sales
 Ramm Parts
 STM Mining Equipment
 Spider Mini Cranes SA
 Transand

Used Parts

All Africa Supplies
 Bell Equipment
 BLC Plant Company
 BMH Trading International
 Capital Equipment Parts
 Dozer
 Dura Parts
 East Coast Gears
 Earthmoving Machine Sales
 Earthmoving Specialist
 ITR Africa
 INMINE
 Industrial Plant Solutions
 Machinery Contractors
 Mid Plant Services
 Nduna Spares
 P&R Earthmoving
 Parramont Equipment
 Powertrans
 Prime Plant
 Queensburgh Plant Sales
 Ramm Parts
 STM Mining Equipment
 Shin-Li Trading
 Turboworks
 WEICHI SEM Parts

Should you want to receive a free copy of our magazine please email your details to
janine@earthbroker.co.za

earthbroker

your sourcing solution for new & used equipment & machinery

The Earthbroker is published monthly and 5400 copies are sent to all the mines, quarries, and all companies dealing with earthmoving and construction in South Africa, Africa and some overseas countries. We are **ABC accredited** and have our **Pamms certificate No: 2A8DD9F60574FFC2A4EEEE01A**.

We also have a website where anyone can view the magazine, which is updated monthly with the latest changes and advertisements.

Please view our E-Mag on **www.earthbroker.co.za**

We accept about 5 editorials a month which we insert free of charge. Should you have an editorial which is relevant to the industry, we will gladly give it consideration.

For details of our prices on a full page, half page or quarter page, please phone me on 083 456 4027 or e-mail me at janine@earthbroker.co.za. We do not ask anyone to sign a contract, however we do insist on a **full calendar month's notice** for cancellation.

Please note that all quotations exclude VAT. We do insertions, (own printing costs) at R1.50 each excluding VAT. Classifieds at R500.00 excluding VAT for a business card size advertisement only.

Janine Sargeant
(CELL)083 456 4027
janine@earthbroker.co.za

**Should you want to receive a free copy of our magazine
please email your details to janine@earthbroker.co.za**

Conditions of Acceptance for advertising

Adverts are subject to the following conditions:

1. Often we receive faxes with illegible letters or numbers. We accept no responsibility due to this.
2. We accept NO responsibility for errors in advertisements received telephonically.
3. We reserve the right to refuse placement or to place the advertisement/s as we see fit.
4. No responsibility will be taken for omission of advertisements, for any errors/colour-differences in advertisements or any results due to such errors.
5. We accept no responsibility for the quality of goods advertised. We merely bring buyers and sellers into contact with each other and we are not responsible for any results due to transactions made through the advertisements.
6. Please note one full calendar months written notice for cancellations.
7. Payment due prior to publication or interest will be charged.
8. There will be an annual increase of 10% at the beginning of each year.
9. The Earthbroker will not be held responsible for content of any advert inserted in our magazine.

COMPANY	BRANCH	DESIGNATION	CONTACT	TEL NO	A/H-CELL	EMAIL
Andru Mining	JHB	Sales	Naren Birdju	(011)395 0200 / +27 82 859 0766		plantsales@andru.co.za
Atlas Masjiene	JHB		Dewald Hattingh	+27(0) 72 547 2198 +27(0) 11 973 3737		info@atlasmasjiene.co.za
Atlas Service Centre	JHB		Fourie Von Tonder		083 301 1632	
Action Equipment Co	JHB	Sales	Yolanda	011 452 1298		yolanda@action.co.za
Africaplant.com	Newcastle	Sales	Mark	034 318 3032	082 301 3961	admin@aficaplant.com
Afritool – Rent	JHB		Karen Abrams	011 974 2819	082 523 9777	karen.abrams@fluor.com
Alf's Tippers JHB	Sales		Alf Ferreira	011 824 0013	083 260 6929	alfplant@global.co.za
All Africa Supplies	JHB		Jody Da Silva	011 918 9976		sales@allafricasupplies.net
Amplant	Polokwane		Eddie Simpson	015 293 1221	082 904 7694	simpsons@amplant.co.za
Anric Enterprises	JHB		Ric de Nysschen	011 740 0975	082 647 9955	anric@cybertrade.co.za
Aquajet Profiles (Pty)Ltd	JHB	Director & Sales	Brad	011 908 5550	073 470 4958	info@aquajetprofiles.co.za
Arch Equipment	JHB		Greg Archibald		082 803 4227	archhire@mweb.co.za
Associated Equipment Co	JHB	Sales	Jaap	011 801 4911/2	082 892 1327	associated1@xnet.co.za
AVANT SA CPT			Wally	021 851 0722	076 688 3399	info@avantsa.co.za
Azrel Equipment	JHB	Sales	Mike Imrie	(010)590 8048	083 230 3118	mike@azrelequipment.com
B&B Plant / Unicrane	Empangeni		Bob Fogg	035 787 0679	082 570 5781	sales@bbplant.co.za
Barloworld Equipment Co				011 929 0000		
Barloworld Equipment Co	Durban	Parts	Brett Woodhouse	031 705 8500	071 484 1035	bwoodhouse@barloworld-equipment.com
Barloworld Equipment Co	Durban	Parts	R. Haripersadh	031 705 8500		rharipersadh@barloworld-equipment.com
Barloworld Equipment Co	Newcastle	Parts	Milan Pather	034 315 2847	073 971 2046	mpather@barloworld-equipment.com
Barloworld Equipment Co	Newcastle	Sales	Brendan Moore	034 315 2847	073 781 8865	
Barloworld Equipment Co	Richardsbay	CRS	Rolfe Botes	035 797 6300	082 904 9619	jhumphries@bw-eq.com
Barloworld Equipment Co	Bloemfontein	Sales	Quentin Coetzee	051 4091200	078 460 2622	qcoetzee@barloworld-equipment.com
Bell Equipment	Richards Bay	Parts	Jackie Smith	035 907 9111	082 550 8791	bellparts@bell.co.za
Bell Equipment		Sales	Andrew Pretorius	011 928 9700	071 607 3978	partssales@bell.co.za
Bell Equipment	JHB	Used Parts	Fazel Patel	011 928 9700		usedparts@bell.co.za
Bell Equipment	JHB	Machine Sales	Myburgh	011 928 9700		sales@bell.co.za
Bert's Bricks (Pty)Ltd	Potchefstroom	Sales	Lizelle	(018)292 1615		marketing@bertsbricks.co.za
BKB Van Wyk	JHB			017 712 2132		vanwykinfo@telkomsa.net
Blumaq	JHB		John Beukes	011 966 5092		john.beukes@blumaq.com
BLC Plant Company	JHB	Machine Sales	Luigi Stravino	011 555 2000	082 552 7017	luigistravino@blcplant.com
BLC Plant Company	JHB	Machine Sales	Paolo Stravino	011 555 2000	082 852 3721	paolotravino@blcplant.com
BLC Plant Company	JHB	Machine Sales	Andrew McCall	011 555 2000	082 256 0334	andrewmccall@blcplant.com
BLC Parts	JHB	Parts Sales	Robbie Stocks	011 555 2000	082 492 9263	
BLC Parts	JHB	Sales	Mike du Plessis	011 555 2000	082 508 2908	mikeduplessis@blcplant.com
BLC Parts	JHB	Sales	Michael Marriott	011 555 2000	082 905 8983	michaelmarriott@blcplant.com
BMH Trading International	Cape Town		Bradley	021 903 2667	082 780 0084	bradley@bmhtradinginternational.com
Bom-mach / Stampede	JHB	Sales	Jabu	011 394 5704		info@stampede.co.za
Bruforce	JHB		Craig	011 393 1298	083 627 2533	bruforce@lantic.co.za
Burgers Equipment & Spares			Anka Burger	011 979 3636		admin.za@burgersafrica.com
Caldas Engineering & Manufacturing	JHB	Marketing	Melanie	011 453 7797		info@caldas.co.za
Capital Equipment Parts	JHB		Mark	011 568 4215		info@capiparts.co.za
Centrax	JHB	Sales	Brendan	011 974 4307	083 654 7885	brendan@centraxsa.co.za
Centrax	DBN	Sales	Steve	086 123 6872	083 613 0664	centraxkzn@telkomsa.net
Cranes Direct	Boksburg	Parts Sales	John Thage	011 894 8056	083 254 4068	john@cranesdirect.co.za
Cranes Direct	Boksburg	Sales	Mark Le Roy	011 894 8056	083 233 2140	mark@cranesdirect.co.za
CTC Plant Company	Cape Town	Owner	Colin McOwen	021 386 4190	082 440 4806	colin@ctcplant.co.za
CTC Plant Company	Cape Town	Sales	Evert Jooste	021 386 4190	082 825 8865	evert@ctcplant.co.za
CTC Plant Company	Cape Town	Sales	Peter Groenewald	021 386 4190	072 368 5581	peterg@ctcplant.co.za
CTC Plant Company	Cape Town	Sales	Mark Walker	021 386 4190	082 441 2446	markw@ctcplant.co.za
CTC Plant Company	Cape Town	Sales	Robert Freeman	021 386 4190	079 500 3940	robert@ctcplant.co.za
CTC Plant Company	Cape Town	Parts	Mark Swanepoel	021 386 4190	082 825 6966	marks@ctcplant.co.za
CTC Plant Company	Cape Town	Parts	Nico Vermeulen	021 386 4190	084 525 6966	nic_v@ctcplant.co.za
CTC Plant Company	Cape Town	Service	Olla van den Heever	021 386 4190	082 467 1894	olla@ctcplant.co.za
CTC Plant Company	Cape Town	Transport	Ian Geyser	021 386 4190	082 440 5861	ian@ctcplant.co.za
CTC Plant Company	Cape Town	Transport	Shaun Haman	021 386 4190	082 495 2640	shaun@ctcplant.co.za
DBZ Diesel Parts	JHB			087 751 4555	074 106 2158	jhb@dbzdiesel.com
DBZ Diesel Parts	Cape Town		Jason Martincich	021 556 6502	082 353 5971	jason@dbzdiesel.com
DBZ Diesel Parts	Durban			031 564 8091/2	082 565 8446	durban@dbzdiesel.com
D- MAN SALES	JHB	Sales	Wessels		072 172 7718	wessels@lpss.co.za
Deutz Diesel Engines	Meadowdale		Johan Reiners	(011)974 3549	082 457 1542	miere@icon.co.za
Deutz Diesel Power	Durban	Branch manager	Nivern Pather	031 700 2384	082 375 4912	nivern@deutz.co.za
Deutz Diesel Power	JHB		Nathan Kitchen	011 923 0600		nathan@deutz.co.za
DGI Trading	JHB		Henk Arnold	010 065 0888	083 233 0019	henk.arnold@dgitrading.co.za
Dirt Diggers	JHB		Vic Viljoen	011 023 6674	082 822 3915	vicv@merchantwest.co.za



**“The man who stops advertising
to save money is like the man
who stops the clock to save time.”
- Thomas Jefferson -**

In difficult economic times one should put more effort into promoting
your business, your services and your products.

Cutting back on your advertising will ensure that your business loses ground
to competitors who know and understand this.

Quick Reference

COMPANY	BRANCH	DESIGNATION	CONTACT	TEL NO	A/H-CELL	EMAIL
Dosco Hydraulic Eng. cc	Montague Gardens		David Laubscher	021 551 2283	082 579 6465	david@doscocape.co.za
Dosco Hydraulic Eng. cc	Montague Gardens		Mike Hart	021 551 2283	082 228 5031	
Dozer	JHB		Graeme	011 452 1224		info@dozer.co.za
Dozer	JHB	Specialized Sales	Chris Cronje	011 452 1224	082 491 5472	info@dozer.co.za
Dura Equipment	JHB	Sales	Prinsloo Munro	011 918 4760	071 611 7281	prinsloo@durasales.co.za
Dura Equipment	JHB	Sales	Ernest Human	011 918 4760	079 874 5458	ernest@durasales.co.za
Dura Equipment	JHB	Sales	Jerry van Niekerk	011 918 4760	082 895 5611	durasales.co.za
Dura Equipment	JHB	Sales	Coenie Albertyn	011 918 4760	083 251 8046	coenie@durasales.co.za
Dura Equipment	JHB	Sales	Curtis Brown	011 918 4760	083 258 5784	curtis@durasales.co.za
Dura Equipment	Cape Town	Sales	Pottie Potgieter	021 988 6618	083 600 0729	pottie@durasales.co.za
Dura Equipment	Cape Town	Sales	Gerrie du Randt	021 988 6618	082 950 7040	gerrie@durasales.co.za
Dura Equipment	Cape Town	Sales	Charmaine Lombard	021 988 6618	082 777 1544	charmaine@durasales.co.za
Earth Mach	Mpumalanga		Chris	017 843 2072	083 232 8713	chris@earthmach.co.za
Earth Moving Plant & Trans.	Pinetown		Richard	031 705 1770	083 777 0152	richard@ept.co.za
EHD Johannesburg		Sales	Lodewyk van As	011 870 5000		ehd@ehd.co.za
Earthmoving Machine Sales	KZN	Sales	Jason	031 777 1025	083 412 1077	jason@sa-ems.co.za
East Coast Gears	KZN	Sales	Johan	031 701 3500	084 244 3324	eastcoastgears@gmail.com
ELB Equipment				011 306 0700		elb@elbequipment.co.za
Equipment Parts & Engines	Isando	Managing member	Attie vd Bergh	011 571 9000	082 655 9276	info@equipmentparts.co.za
ESP	Isando	Div Manager	Gary Wright	011 398 1700	082 449 6773	garyw@espa.co.za
ESP	Benoni	Div Manager	Adrian Erasmus	011 845 2911	083 449 0519	adriane@espa.co.za
ESP	Pretoria	Reg Manager	Willie v.d Merwe	012 804 6706	082 789 0828	williev@espa.co.za
ESP	Middelburg	Div Manager	Leon Bezuidenhout	013 246 2520	083 778 9877	leonb@espa.co.za
ESP	Pinetown	Reg Manager	Shaun Clarke	031 705 4200	082 413 1103	shaunc@espa.co.za
ESP	Cape Town	Reg Manager	Jaco Bekker	021 945 1030	072 384 4901	jacob@espa.co.za
ESP	Port Elizabeth	Branch Supervisor	Rainier Gerber	041 484 4575	083 698 1805	rainierg@espa.co.za
ESP	Bloemfontein	Reg Manager	Craig Wansbury	051 432 4501	082 413 2708	craigw@espa.co.za
ESP	Kimberley	Branch Supervisor	Kingsley Olyn	053 831 8349	082 805 7558	kingsleyo@espa.co.za
Filter Centre	Pinetown	Manager	Viyen Maharaj	031 700 9074	076 727 3985	info@filtercentre.com
Filvent	Witbank		Bernard	013 656 2726		workshopmanager@filvent.co.za
Fluid Blast Engineering	JHB		George Slabbert		082 550 1385	fluid.blast@live.com
Force 8 CC	Cape Town		Justin Nicoll	021 535 1117	082 373 9802	info@force8.co.za
Full Blast Hydraulics	JHB		Andre Calitz	(011)900 3790		info@fullblasthydraulics.com
Fusion Torque Components	JHB	Director	Eldred Carstens	011 828 9023	083 460 6790	eldredfusion@telkomsa.net
Gears for Africa	JHB	Sales	Carl	011 824 2017		carl@gearsforafrica.co.za
Gears for Africa	CPT	Sales	Carl	021 577 1030		carl@gearsforafrica.co.za
GET Spares	JHB	Sales	Raymond	(011)397 5276	082 655 2301	sales@getspares.co.za
GET Spares	JHB	Sales	Freddy	(011)397 5276	082 604 0045	sales@getspares.co.za
GET Spares	JHB	Sales	Clyde	(011)397 5276	082 581 5152	sales@getspares.co.za
Gillroy	Durban		Rob Gillit	031 765 2745	083 661 2057	info@gillroyplant.co.za
G-Man Trading	JHB	Sales	Luke Jr.	011 672 7011		lukej@gman.co.za
GO Industry - Dove Bid			John Cowing	0861 463 683	083 662 0237	john.cowing@liquidityservices.com
GR Spares	Pinetown	Sales	Gavin	031 705 5463	082 452 8690	grspares@webstorm.co.za
Grindright Engineering	Middelburg		Piet De Vos	013 246 2308	064 849 2320	grindright@gmail.com
HL Du Plooy	Harrismith		Hennie Du Plooy	082 719 8744	082 574 4212	hennie@hiduplooyplant.co.za
Heavy Duty Earthmoving Parts			Jannie Burger	011 394 4125/6/7		jannie@hdep.co.za
HPE Africa	Jet Park	Sales Manager	Lani	011 397 4670		marketing@hpeafrica.co.za
HPE Africa	Durban	Branch Manager	Adam Armitage	031 700 3426		Adam.armitage@hpeafrica.co.za
HPE Africa	East London	Branch Manager	Leon Dreyer	043 732 1428		leon.dreyer@hpeafrica.co.za
HPE Africa	Cape Town	Branch Manager	Gary Pnematicatos	021 905 0581/2		Gary.P@hpeafrica.co.za
Industrial Engine Parts	JHB	Sales	Morne	011 868 5436	082 851 7514	sales@ieppower.co.za
Industrial Plant Solutions	Natal		David Botha		083 405 3494	sales@ipsglobal.net
Immine Inala Mining Services	Witbank		Clement Van Der Merwe		082 414 1393	sales@immine.co.za
ITR SA	JHB	National Sales	Manager Carel Zwieglaar	011 614 0070		carel.zwieglaar@itrafrica.com
ITR SA	Middelburg		Steven Hugo	013 590 5614		middelburg@itrafrica.co.za
ITR SA	Bloemfontein	Sales Manager	Jacques Billing	051 011 5620		jacques.billing@itrafrica.com
ITR SA	JHB	U/C Manager	Sean Smit	011 614 0070		sean.smit@itrafrica.com
ITR SA	CPT		Lee-Anne	021 905 7340		lee-anne.vandernest@itrafrica.com
ITR SA	Kathu	Branch Manager	Michiel Jacobs	053 723 2245		michiel.jacobs@itrafrica.com
ITR SA	EL	Branch Manager	Shaun Smith	043 748 3541		shaun.smith@itrafrica.com
ITR SA	PE	Reg. Manager	Basil De Coning	041 451 2210		basil.deconing@itrafrica.com
ITR SA	Pinetown	Sales Manager	Quintin Pillay	031 941 1133		bronwyn.claesson@itrafrica.com
ITR Africa	Zambia	Operations Manager	Andre Synders	260 96 351 3429		andre.synders@itrafrica.com
ITR Africa	Namibia	Director	Hanjo Schierschmidt	264 83 331 5160		hanjo.schierschmidt@itrafrica.com
J&T Earthmoving Maintenance	Kempton Park		Alex Savage		081 895 5583	alex@earthmovingmaintenance.co.za
Jacobs Transport	Vereeniging	Sales	Gys Jacobs	010 200 9946	083 544 0275	gys@jacobstransport.co.za
JBS Plant Hire	Klerksdorp		Tonie van den Heever	018 469 1016/7	083 654 7809	jjvdh@lantic.net
Johnson Taylor	JHB	Sales Manager	Graham	011 614 5122		graham@johnsonntf.co.za
JW Plant Hire and Sales	Welkom	Sales	Leon	057 355 1119	083 253 6110	j.w.plant@telkomsa.net
Kaltire			Jacques Roux	012 548 9327	083 777 9497	jacques_roux@kaltire.com
Kappa Engineering		Managing Director	Gerrie Visagie	011 828 5506/8	082 575 2199	gerrie@kappaeng.co.za
Kappa Engineering Procurement		Rebuild Director	Nathaniel Hauptfleisch	011 828 5506/8	082 928 6312	nathaniel@kappaeng.co.za
KDH Hydraulics	JHB		Ricus	011 762 9001/2	071 678 3746	ricus@kdhhydraulics.co.za
Kemach JCB	JHB			011 826 6710		sales@kemachjcb.co.za
Kemach JCB	Middelburg			013 244 1839		sales@kemachjcb.co.za
Kemach JCB	Pretoria			012 548 2956		sales@kemachjcb.co.za
Kemach JCB	Bloemfontein			051 432 3978		sales@kemachjcb.co.za
Kemach JCB	Durban			031 700 8278		sales@kemachjcb.co.za
Kemach JCB	Richards Bay			035 751 2718		sales@kemachjcb.co.za
Kemach JCB	CPT			021 949 7442		sales@kemachjcb.co.za
Kemach JCB	Port Elizabeth			041 453 1819		sales@kemachjcb.co.za
Kemach JCB	East London			043 732 1902		sales@kemachjcb.co.za
Kemach JCB	George			044 878 0366		sales@kemachjcb.co.za

COMPANY	BRANCH	DESIGNATION	CONTACT	TEL NO	A/H-CELL	EMAIL
Kemach JCB	Mthatha			047 531 1688		sales@kemachjcb.co.za
KHD Electrical			Delville Kuhn	011 392 4444		delville@khdiesel.co.za
Komatsu	Cape Town	Sales	Frederick van Ryneveld	021 951 1251	082 317 2849	info@komatsu.co.za
Komatsu	Gauteng	Sales	Breton Alexander	011 923 1000		info@komatsu.co.za
Komatsu	Gauteng	Sales	Graeme Armstrong	011 923 1000		Graeme.Armstrong@komatsu.co.za
Komatsu	Gauteng	Sales	Karen van der Walt	011 923 1000		Karen.vanderWalt@komatsu.co.za
Komatsu	Gauteng	Sales	Francois Griesel	011 923 1000		Francois.Griesel@komatsu.co.za
Komatsu	Gauteng	Sales	Sascha Caixeiro	011 923 1000		Sascha.Caixaieiro@komatsu.co.za
Komatsu	Pinetown	Sales	Jacques van der Sandt	031 710 4950	082 888 0995	info@komatsu.co.za
Komatsu	Port Elizabeth	Sales	George Hyman	041 452 6555	082 882 9576	robd@komatsu.co.za
Komatsu	White River	Sales	Fortune Mathiba	013 758 9900	083 675 1756	pietvw@komatsu.co.za
Komatsu	Wolmeransstad	Sales	Piet du Toit	018 596 2244	083 271 3567	info@komatsu.co.za
Komax Spares	JHB		Jacques	011 664 8828	082 616 1654	jacques@jsaeearth.co.za
Komax Spares	JHB		Gawie	011 664 8828	082 650 0505	
Komax Spares	JHB		Danie	011 664 8828	076 222 2708	
Kruiper Spares	Port Elizabeth	Sales	Gary	041 585 6455	083 321 0819	kruiper@global.co.za
Kruiper Spares	Port Elizabeth	Sales	Bill	041 585 6455	082 569 2740	kruiper@global.co.za
Kruiper Spares	Port Elizabeth	Sales	Philip	041 585 6455	083 235 3919	kruiper@global.co.za
Landboupert	Isando			011 966 9200		info@landboupert.com
Leo Hydraulics				011 976 1941		admin1@leohydraulics.co.za
LiuGong Machinery SA	JHB	Parts		011 979 3636		admin.za@burgersafrica.com
LNE Agri Earth (Pty) Ltd	JHB	Sales			083 327 3237	LNE@LNE-AgriEarth.com
LPM Procurement	Germiston	Office	Linda Patricio	011 776 9160	083 637 7122	info@lpmprocurement.co.za
Machinery Contractors	Brits		Wayne	012 250 3534		wayne@machinerycontractors.co.za
Mae Equipment	Witbank	Sales	Thomas Mittag		072 545 6223	info@mae-equipment.com
Mafika Engineering	JHB			011 334 1120		info@mafika.co.za
Marange Plant & Mining	Bloemfontein		Maryke	053 841 0415	082 296 9810	maryke@marange.co.za
Marsay Equipment	Johannesburg		Tim Marsay	011 781 7410	083 654 4248	tim@marsayequip.co.za
Masslift Africa Mitsubishi Forklifts Dbn		Product Support/Spares	Brandon	031 700 8480	078 697 6161	Brandon@mlift.co.za
McKenzie Plant	Sales	Richmond/KZN	Stuart McKenzie	033 212 2181	082 558 7901	sjm@mckenzieplant.co.za
MHS Plant	JHB	Sales	Conrad	010 500 6193	082 781 9481	conrad@mhsplant.com
Midplant Services	JHB	Sales	Kellas	011 967 0055/60	083 675 1385	sales@midplant.com
Midplant Services	JHB	Sales	Jeff	011 967 0055/60	083 657 6123	sales@midplant.com
Midplant Services	JHB	Sales	Lee	011 967 0055/60	083 459 1695	sales@midplant.com
Milltech Engineering			Neil	011 421 7821	083 460 6510	neil@milltech-eng.com
Multi One Evolution	Benoni		Lofty Van Wyk		082 888 8899	info@multi-one.co.za
Mzantsi Transmissions	Johannesburg	Sales	Darryl Cilliers	011 868 5130	071 684 5784	info@gearboxes.me
N12 Truck Yard	Delmas – Mpumalanga				013 661 1039	sales@n12truckyard.co.za
Nduna Spares	Steelport		Natasha Reynders	013 230 3852		ndunaspar@gmail.com
New Beginnings Designs	JHB		Suken	011 791 4120	082 923 7987	suken@nbdesigns.co.za
NUCO Auctioneers	Dooringkloof East Pretoria		Jaco De Jager		011 206 8963	jaco@nucoauctioneers.com
One Stop Procurement	Benoni		Roger Melenas	011 420 1003	079 493 4486	roger@onesp.co.za
P&R Earthmoving	JHB	Sales	Scott	010 823 6385		scott@prearthmoving.com
P&R Earthmoving	JHB	Sales	Grant	010 823 8821		grant@prearthmoving.com
P&R Earthmoving	JHB	Sales	Ladis	010 823 7322		ladislas.l@pandearthmoving.com
P&R Earthmoving	JHB	Sales	Greg	010 823 6276		greg@prearthmoving.com
Pacific Construction Equipment		Fairleads Benoni	Mark	011 453 1567	082 441 4587	markivan@mweb.co.za
Paramount Tracks	JHB	Sales		010 007 3258	082 894 5547	sales@paramounttracks.com
Paul Heslop Plant Services			Paul Heslop	086 111 5422	074 101 8239	paul@pixie.co.za
PEX Hydraulics	Cape Town	Sales	Nick Kotzee	021 556 3232		nick@pex.co.za
PEX Hydraulics	Johannesburg	Sales	Mark Dickason	011 882 8413		mark@pex.co.za
Pex Hydraulic Repairs	KZN	Sales	Priscilla Shanker	031 705 5050	084 429 8654	priscilla@pexkzn.co.za
Pilot Crushtec	JHB			011 842 5600		sales@pilotcrushtec.co.za
Plant Finder	PE		Shawn Michell	041 379 1717	082 568 4033	shawn@plantfinder.co.za
Powertrans Rebuild Centre	Isithebe		Ricky Naidoo	032 459 5700	082 555 4925	info@powertrans.co.za
Power Transmissions Technology	Benoni		William	011 022 8570		info@pttech.co.za
Primeplant	JHB		Francois	011 979 4853	066 489 4891	spares@primeplant.co.za
Queensburgh Plant Sales	JHB	Used Sales	Wikus	011 964 1631	083 235 5665	qpsales@mweb.co.za
Queensburgh Plant Sales	JHB	New Sales	Albert	011 964 1467	082 652 4907	qpsales@mweb.co.za
R21 Trucks	Centurion	Sales Manager	Mark Noble	011 206 8958	082 226 2220	mark@r21trucks.co.za
Ramm Parts	Witbank		Adriaan	076 127 2977		adriaan@rammparts.co.za
Ramm Parts	Witbank		Mark	072 530 7373		marc@rammparts.co.za
Ramm Parts	Witbank		Rodney	073 103 9582		
Randle Parts	KZN	Sales	Stan		083 653 4270	
Randle Parts	KZN	Sales	Justin		083 639 1982	justin.cope@randleparts.co.za
Randle Parts	KZN	Sales	Geoff		074 843 5298	
Rankin Training	DBN		Marcel	031 702 8447	082 909 9070	marcel@rankintraining.co.za
Reef Fuel Injection Services	JHB	Manager	Warren Hauser	011 873 2354		warren@reeffuel.co.za
Rent a Dozer	Marble Hall	Owner	Theodor Kleynhans	013 261 1746	083 459 5593	admin@rentadozer.co.za
Replacement Spares Unltd. / RSU	Pretoria		Sales Paul Pelsner	012 803 8714		paul@rsu.co.za
Rham Equipment	Olifontfontein		Michael Combrink	011 203 7900		info@rham.co.za
Rhino Excavator Hammers	JHB		Paul	086 111 5422	074 101 8239	sales@rhinohammers.co.za
Rhino Excavator Hammers	JHB		Clive	(011)397 3327	071 670 8707	sales@rhinohammers.co.za
Rocktech Earthmoving Wearparts	JHB	Manager	Derek Swift	011 793 6838	082 561 4682	derek@rocktech.co.za
Roger's Undercarriage	JHB			011 964 2695	083 974 5851	rogers.uc@mweb.co.za
Ruspet Exhausts	JHB		Russell	011 827 2824	083 448 7669	russell@ruspet.co.za
Scotty's Plant Hire	Pinetown		Ashley Scott	031 700 8000		scottys.plant@mweb.co.za
Scotty's Plant Hire	Pietermaritzburg		Ashley Scott	033 386 1653/14		scottysprmbales@mweb.co.za
Sclanders Mech Natal		Sales	Ivan Kaisten	031 700 8083	083 653 3724	ivan@schlandermech.co.za
SEM	JHB	Parts	Barry Fang		072 399 9817	bm@semrsa.co.za
SEM	JHB	Parts	Saaj		061 564 1167	parts1@semrsa.co.za
Sew's Plant & Civils	KZN		Sunash	031 507 2491	082 284 5082	info@sews.co.za
Shin Li Trading	Johannesburg			011 396 1081/87	079 872 0465	sales@shinlitrading.co.za

Quick Reference

COMPANY	BRANCH	DESIGNATION	CONTACT	TEL NO	A/H-CELL	EMAIL
Shonakhona Logistics				032 943 3428	073 188 2004	
Sino Plant	Gauteng	Sales Manager	Mark Noble	011 206 8958	082 226 2220	mark@sinoplant.co.za
Spec-Cast Wear Parts	JHB	Sales Manager	Shelton Holdsworth	011 396 1713	063 733 4626	shelton@spec-cast.co.za
Spec-Cast Wear Parts	Middelburg	Sales	Herman Bezuidenhout	013 813 1413	072 187 6943	herman@spec-cast.co.za
Spec-Cast Wear Parts	Kathu, N/Cape	Sales	Ilse van Rooi	053 010 1304	067 414 8832	northerncape@spec-cast.co.za
Sintech	JHB	Sales	Jacob Nkabinde	011 823 2359		sales@sintech.co.za
SparePower	JHB	Parts Sales		011 845 4184	082 457 2804	terry@sparepower.co.za
STM Mining	JHB	Sales	Barney v Rooyen	011 894 6192	072 086 6163	barney@stmmining.co.za
The CAT Rental Store / Barloworld		Durban		(031)569 8500	082 909 9188	mnicolia@barloworld-equipment.com
The Seat Connection	JHB	Sales	Lydia/Graham	011 452 6802/6814		info@seatconnection.co.za
TJB Earthmoving Parts Buying	JHB		Brad	+27 71 154 3786		brad@tjbearthmoving.co.za
Tommy's Auto Parts	Newcastle		Ahmed	034 375 8111	072 889 2581	exportintl@aol.com
Tractor and Grader Supplies	JHB	Sales	Jeannine	011 392 7533		jeannine@tags.co.za
Tractor and Grader Supplies	Witbank	Sales	Francois	087 943 8661		francois@tags.co.za
Tractor and Grader Supplies	Durban	Sales	Gary	031 700 8250		gary@tags.co.za
Tractor and Grader Supplies	Cape Town	Sales	Morne	021 946 1561		morne@tags.co.za
Tractor and Grader Supplies	Swaziland	Sales	Tiago	+268 2 518 4548		tiago@tags.co.za
Tractor and Grader Supplies	Namibia	Sales	Handre	+264 61 264710/1/2		handre@powerpartsnamibia.co.za
Transand			Fran cois Gerber	044 695 0105	082 454 0934	charlesjnr@transand.net
Trysome cc	JHB	Supplies	Jaco	(011)823 5650		jaco.vandermerwe@trysome.cc
TTC Engineering & Hydraulics	JHB		Owner Tino	011 845 2837	082 822 4676	tino@ttcenghyd.co.za
TTC Engineering & Hydraulics	JHB		Admin Chanel	011 845 2837		admin@ttcenghyd.co.za
Turboworks	Centurian	Sales		012 653 7507	082 824 8037	sales@turboworks.co.za
Unity	JHB	Sales		011 845 1630	082 457 0221	unitysalesandservices@gmail.com
VR Diesel & Turbo			Wayne	013 246 1003	083 310 9235	wayne@vrdiesel.net
Vendal Civils	JHB		Anton	011 801 4911/2	082 923 5397	vendels@mweb.co.za
Vendel Equipment Sales	JHB	Sales	Jaap	011 801 4911/2	082 892 1327	associated1@xnet.co.za
Vita Plant & Equipment	Brits	Machine Sales & Repairs	Costa Voyiatzakis	012 252 2915	082 521 7095	nicholas@vitaplant.co.za
Vortex transmissions	JHB		Johan	011 452 4430	082 333 1005	vortex@mweb.co.za
Vortex transmissions	JHB		Jan	011 452 4430	082 333 1004	vortex@mweb.co.za
WH Auctioneers	Midrand	Sales	Shannon	011 574 5700	084 520 5000	info@whauctions.com
WH Auctioneers	Midrand	Sales	Mathew	011 574 5700	084 252 5000	info@whauctions.com
WH Auctioneers	Midrand	Sales	Tim	011 574 5700	082 371 1069	info@whauctions.com
WAHA Equipment	Midrand	Sales	Will	011 574 5728	076 037 9516	will@waha.co.za
Wearpact	JHB	Sales	Linda	011 845 3234	083 453 3960	mwwrp@mweb.co.za
Weichai	JHB	Parts	Barry Fang		072 399 9817	bm@semrsa.co.za
Wilson Plant	CPT	Sales	Miles Wilson	021 534 9536	082 928 9215	admin@wilsonplant.co.za
Yellow Metal SA	Pretoria	Sales	Pieter Botha	011 970 1299	082 805 8220	sales@ymsa.co.za
ZF Services South Africa	JHB	Sales: Service Parts	Warren Viviers	(011)457 0031	082 776 2759	warren.viviers@zf.com
ZF Services South Africa	JHB	Workshop:Off-road division	Christo Uys	(011)457 0091		christo.uys@zf.com

Want Your company listed in our Quick Reference Guide? Please email your company details to janine@earthbroker.co.za





QPS

QUEENSBURG PLANT SALES

Keep it simple buy quality



**Your friendly supplier of
new and used
earthmoving parts**

**KOMATSU – HITACHI – HYUNDAI
DOOSAN CATERPILLAR – NEW
HOLLAND – TEREX – JCB CASE
CONSTRUCTION – CARRARO
CUMMINS**

**KEEP IT SIMPLE
BUY QUALITY**

**EARTHMOVING
MACHINE PARTS
SALES REPAIRS**

Albert
082-652-4907
albert@qps.africa

Riccardo
061-224-6829
riccardo@qps.africa

Madelaine
082-328-9370
madelaine@qps.africa

Dave
082-708-7965
dave@qps.africa

Werner
079-740-2088
werner@qps.africa

Wikus
083-235-5665
wikus@qps.africa

WWW.QPS.AFRICA
TEL (011) 964 1631

Our October gift to you

Bell Lubricant customers receive a **FREE** gift of a Bell-branded plug wrench, faucet and level indicator with every purchase of a 210 litre drum.

8 Good reasons to use Bell Lubricants

1. Excellent oxidation stability
2. Enhanced high and low temperature dispersancy and detergency
3. Outstanding anti-sludging properties
4. Exceptional cold starting ability
5. Good fuel saving properties
6. Prolongs the life of heavy-duty, high-speed diesel and petrol engines operating under severe service conditions
7. Better wear protection
8. Enables advanced engine technology to meet strict exhaust emission standards for energy conservation



Drum Level indicator



Plug wrench

3 FREE Gifts*



Drum Faucet

***FREE
gifts
when you
purchase a
210Ltr
Drum**



Offer valid from 1 to 31 October.
Thank you for your support!

FOLLOW US ON



Contact your nearest BELL Customer Support Centre • E-mail: bellparts@bell.co.za
www.bellequipment.com

**Strong Reliable Machines
Strong Reliable Support**

BELL