

your sourcing solution for new & used equipment & machinery

# earthbroker

email: [janine@earthbroker.co.za](mailto:janine@earthbroker.co.za) web: [www.earthbroker.co.za](http://www.earthbroker.co.za)

volume 16 issue 11 November 2020



ON THE RIGHT  
TRACK WITH

## CEN TRAX

Since 1974

[www.centraxsa.com](http://www.centraxsa.com)

Head Office: Tel: (011) 392 5055 / (011) 392 5056 / Fax: (011) 392 3091  
Durban Branch: Tel: 086 123 6872 / Fax: 086 529 4683 / Steve: 083 613 0664

## EXPERTS IN UNDERCARRIAGE & WEAR PARTS



EXPERIENCE THE WORLD CLASS  
CENTRAX UNDERCARRIAGE  
CONVERSION & REPAIR PROCESS

YOUR ONE STOP  
UNDERCARRIAGE &  
WEAR PARTS SHOP

- IDLER REBUILD FACILITY
- TRACK WORKSHOP
- UNDERCARRIAGE
- GROUND ENGAGING TOOLS

*Merry  
Christmas*

TEAM **CEN TRAX**  
WOULD LIKE TO WISH YOU & YOUR FAMILY  
A SAFE AND BLESSED CHRISTMAS AND  
A PROSPEROUS 2021



Manufacturers names, numbers and descriptions are used for reference purposes only & is not implied that any parts listed is the product of these manufacturers.



**WE HAVE MOVED INTO  
BIGGER PREMISES TO SERVICE  
OUR GROWING CLIENTS**



**SPIDER MINI CRANES**  
**SOUTH AFRICA**

**Head Office - 035 787 0679**

**Bob - 082 570 5781 | bob.uniccranes@bbplant.co.za,**

**Tara - 079 694 3978 | tara.uniccranes@bbplant.co.za**

**JHB Office : Sean - 064 754 8419 | sean.uniccranes@bbplant.co.za**

**DBN Office: Phil on 071 118 7145 | phil.uniccranes@bbplant.co.za**

**Visit our website at [www.bbplant.co.za](http://www.bbplant.co.za)**

**RENTALS | SALES | SERVICE**

**Head Office - 55 Knutzen Street, Empangeni, Kwazulu Natal**

**Johannesburg Office - Unit 2, 81 Bell Cnr Watt Street, Meadowdale Ext 1, Germiston, 1614**



## Contact Details

Sales Manager & Editor  
**Janine Sargeant**  
083 456 4027

Design / Layout  
**Dylan McDonald**  
082 485 3001

Sales Contact  
083 456 4027

Electronic Origination & Printing  
ROC Media

The Editors welcome articles and photographs, which will be considered for publication on their merit.

**Disclaimer:** The Editors and Publisher do not necessarily endorse any views or statements made by contributors.

**Janine Sargeant**  
083 456 4027  
(FAX) 086 685 1258  
janine@earthbroker.co.za

**Physical Address:**  
Suite 16, Hillcrest Office park  
2 Old Main Road, Hillcrest, 3610

**Postal Address:**  
P.O. Box 2484,  
Hillcrest,  
3650

**Banking Details:**  
Earthbroker  
First National Bank  
Hillcrest  
Code: 223726  
Account No.: 62295649308



Audit Bureau of Circulations  
of South Africa

**We are ABC accredited**

**Pamms Certificate no:**  
2A8DD9F60574FFC2A4EEEE01A



Manufacturer's names, numbers & descriptions are used for reference purposes only & it is not implied that any part listed is the product of the manufacturers.



### BABCOCK

Brand new TADANO rough terrain crane on SA soil - a first



### John Deere

John Deere pays tribute to farmers on National Farmers Day



### Emesent

Emesent cements position in the mine planning eco-system with Maptek partnership



### GOSCOR Earthmoving

Goscor Earthmoving Equipment delivers two SANY SY335C excavators to Wearne Quarries of KZN

## Industry News

Stay up to date with the latest Industry news

## Contents

<b>Advertisers Index</b>	<b>92-93</b>	<b>Machinery Contractors</b>	<b>69</b>
<b>All Africa Supplies</b>	<b>20</b>	<b>Marsay Equipment</b>	<b>66</b>
<b>Andru Mining</b>	<b>11</b>	<b>McKenzie Plant</b>	<b>58</b>
<b>Amalgamated Plant</b>	<b>8</b>	<b>Mid Plant Services</b>	<b>59</b>
<b>Associated Equipment</b>	<b>49</b>	<b>Mzantsi Transmissions</b>	<b>24</b>
<b>Atlas Masjiene</b>	<b>8</b>	<b>Nduna Spares</b>	<b>72</b>
<b>Azrel Equipment</b>	<b>40</b>	<b>One Stop Procurement</b>	<b>46</b>
<b>B &amp; B Plant</b>	<b>2</b>	<b>P &amp; R Earthmoving</b>	<b>5</b>
<b>BMH Trading International</b>	<b>73</b>	<b>Paramount Equipment</b>	<b>44</b>
<b>Bell Equipment</b>	<b>41,100</b>	<b>Paramount Tracks</b>	<b>45</b>
<b>BLC Plant</b>	<b>50</b>	<b>Plant Finder</b>	<b>12-13</b>
<b>BLC Trucks</b>	<b>51</b>	<b>Powertrans</b>	<b>70</b>
<b>BLC Parts &amp; Components</b>	<b>52</b>	<b>Power Transmission Technology</b>	<b>4</b>
<b>Blumaq South Africa</b>	<b>38-39</b>	<b>Prime Plant</b>	<b>54</b>
<b>Capital Equipment Parts</b>	<b>74-75</b>	<b>Queensburgh Plant Sales</b>	<b>99</b>
<b>Cat ER</b>	<b>40</b>	<b>Ramm Parts</b>	<b>9</b>
<b>Centrax</b>	<b>1,22-23</b>	<b>Rhino Excavator Hammers</b>	<b>60</b>
<b>CTC Plant Company (PTY) Ltd</b>	<b>55</b>	<b>Ruspet Exhausts</b>	<b>24</b>
<b>Dozer Parts</b>	<b>62-63</b>	<b>Shin Li Trading</b>	<b>56-57</b>
<b>Dura Sales</b>	<b>34-36</b>	<b>Sintech</b>	<b>65</b>
<b>Earthmoving Machine Sales</b>	<b>78-79</b>	<b>Spec-Cast Engineering</b>	<b>10</b>
<b>Earth Mach</b>	<b>14</b>	<b>Spec-Cast Wear Parts</b>	<b>26-28</b>
<b>East Coast Gears</b>	<b>24</b>	<b>STM Mining</b>	<b>6-7,68</b>
<b>ESP</b>	<b>16-19</b>	<b>TJB Earthmoving</b>	<b>53</b>
<b>Filter Centre</b>	<b>10</b>	<b>Tractor Grader Supplies</b>	<b>32-33</b>
<b>Force 8</b>	<b>71</b>	<b>The Seat Connection</b>	<b>40</b>
<b>Gears for Africa</b>	<b>48</b>	<b>Transand</b>	<b>67</b>
<b>Grindright Engineering Services</b>	<b>76</b>	<b>Turboworks</b>	<b>21</b>
<b>Industrial Plant Solutions</b>	<b>77</b>	<b>Vortex Transmissions</b>	<b>29</b>
<b>ITR Africa</b>	<b>42-43</b>	<b>Weichai &amp; SEM Parts</b>	<b>61</b>
<b>Inmine - Inala Mining Services</b>	<b>30-31</b>	<b>Wearpact</b>	<b>37</b>
<b>KDH Hydraulics</b>	<b>64</b>	<b>WesTrac CAT</b>	<b>8</b>
<b>Liugong-Burgers</b>	<b>47</b>	<b>Machine Classifieds</b>	<b>88-91</b>
<b>LNE Agri Earth (Pty) Ltd</b>	<b>15</b>	<b>Quick Reference</b>	<b>95-98</b>
<b>MAE Equipment</b>	<b>25</b>		

For Terms & Conditions on our advertising please look at page 94  
To receive a free copy of our magazine please email [janine@earthbroker.co.za](mailto:janine@earthbroker.co.za)

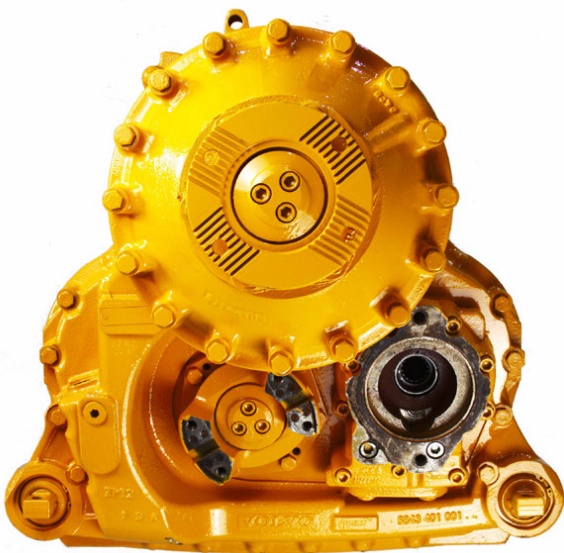


# EARTHMOVING EQUIPMENT SPARES DRIVELINE COMPONENT SPECIALISTS

## DROPBOX / TRANSFER CASES



**CAT**

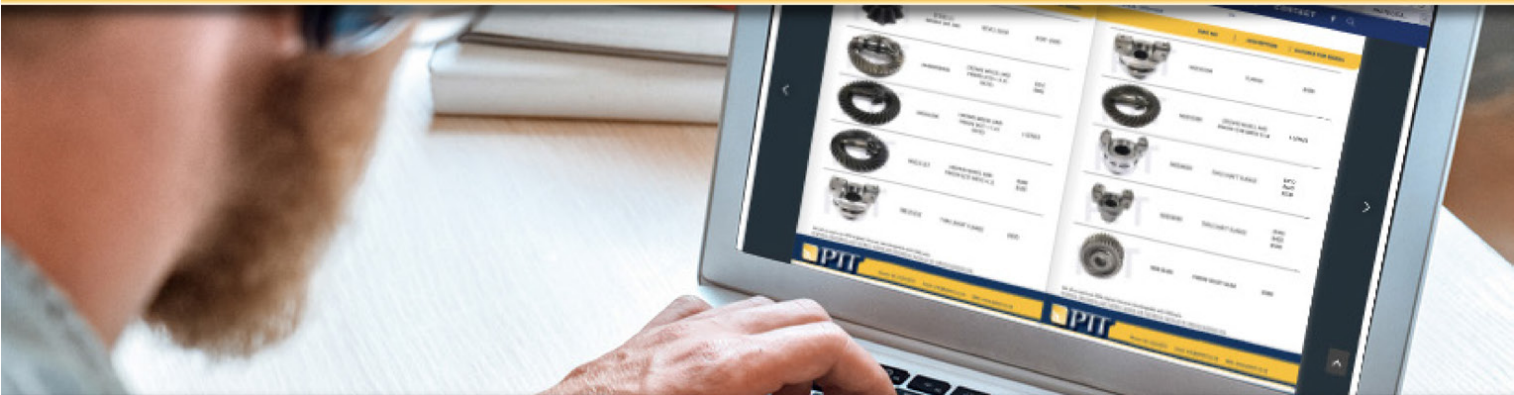


**VOLVO**



**BELL**

*\*Rebuilds or Service Exchange Units available*



KEEPING YOUR PLANT IN MOTION

View our online catalogue for more: [pttech.co.za/product-catalogue](http://pttech.co.za/product-catalogue) or Contact us: Tel: 011 022 8570



## YOUR EARTHMOVING COMPONENT SPECIALIST



Ladis : +27 78 162 5250  
[ladislas.l@pandrearthmoving.com](mailto:ladislas.l@pandrearthmoving.com)

Kyle : +27 83 602 5430  
[kyle@prearthmoving.com](mailto:kyle@prearthmoving.com)

Conrad : +27 79 525 0882  
[conrad@prearthmoving.com](mailto:conrad@prearthmoving.com)

Scott : +27 72 565 4920  
[scott@prearthmoving.com](mailto:scott@prearthmoving.com)

No. 170 - 3rd Avenue, Bredell  
Kempton Park, 1619. South Africa

ATTACHMENTS • AXLES • BREAK GROUPS • CYLINDERS • ENGINES • FINAL DRIVES • G.E.T.



**KOMATSU GD825**  
STRIPPING FOR  
SPARES



**KOMATSU 475-5**  
RUNNING MACHINE



**CUMMINS K2000**  
ENGINE



**2 X CAT 777F**  
RUNNING MACHINES



**CAT 773F**  
COMPONENTS



**KOMATSU 785-5**  
ENGINE



**D10 TRANSMISSION**  
2 X AVAILABLE



**C27 D10T**  
ENGINE



**CAT C9**  
ENGINE



**CAT C13**  
ENGINE



**LIEBHERR 9250**  
TRACK GROUPS

HYDRAULIC PUMPS • NEW PARTS • POWERTRAINS • TRANSMISSIONS • UNDERCARRIAGE

**YOUR EARTHMOVING COMPONENT SPECIALIST** [www.prearthmoving.com](http://www.prearthmoving.com)



**GOOD USED EARTHMOVING PARTS AND EQUIPMENT**

**STM**  
**MINING EQUIPMENT PTY(LTD)**

Tel: (011)894-6192 / (011)894-3377  
Fax: (011)894 7914  
[barney@stmmining.co.za](mailto:barney@stmmining.co.za)  
[donovan@stmmining.co.za](mailto:donovan@stmmining.co.za)

**Office Hrs: Mon-Fri 07h00-17h00**



**D375-5**  
STRIPPING FOR PARTS



**FULLY REBUILT 140G GRADER**  
WITH WARRANTY



**325C**  
STRIPPING FOR PARTS



**980G FRONT END LOADER**  
FOR STRIPPING OR REBUILD



**WA500-3** RUNNING BUT  
FOR STRIPPING OR REBUILD



**GOOD RUNNING 740**  
(B1P) SERIAL



**GOOD RUNNING ZAXIS 200**  
UNDER 6 000 HRS



**275-5**  
NO TRANSMISSION STRIPPING



**938F**  
GOOD RUNNING MACHINE



**950H**  
STRIPPING FOR PARTS



**740 ADT DUMPERS X 2** RUNNING  
FOR REBUILD OR STRIPPING



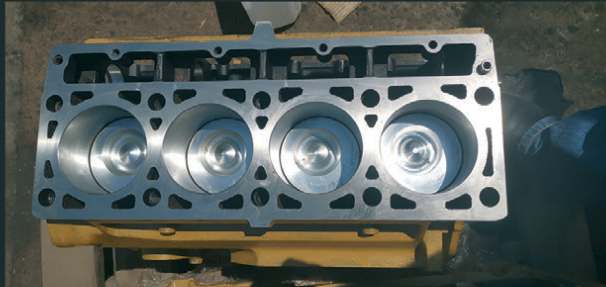
# GOOD USED EARTHMOVING PARTS AND EQUIPMENT

## STM

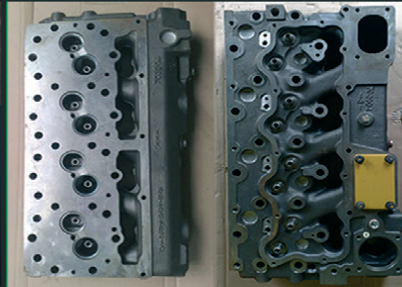
MINING EQUIPMENT PTY(LTD)

Tel: (011)894-6192 / (011)894-3377  
 Fax: (011)894 7914  
[barney@stmmining.co.za](mailto:barney@stmmining.co.za)  
[donovan@stmmining.co.za](mailto:donovan@stmmining.co.za)

Office Hrs: Mon-Fri 07h00-17h00



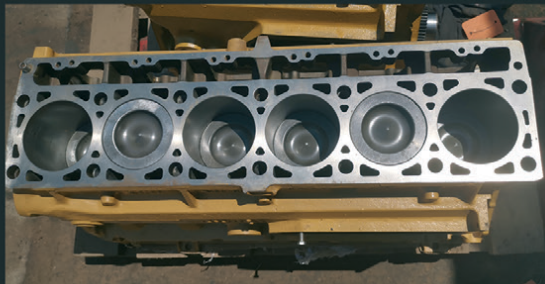
**3114DI RECON SUB**



**HEADS TESTED & RECONDITIONED**  
 3304 / 3306 / 3204 / 3116 / 3406 / 3412 / C9 / C13



**REMAN SUB FROM CAT C9**



**RECON 3126DI SUB**



**REMAN 3126 HEADS**



**D10T RECON**  
 SERVICE EXCHANGE FINAL DRIVES



**RECON 789C TRANSMISSION**



**CAT 140G TRANSMISSION**  
 RECON SERVICE EXCHANGE



**CAT 140G DIFF**  
 RECON SERVICE EXCHANGE



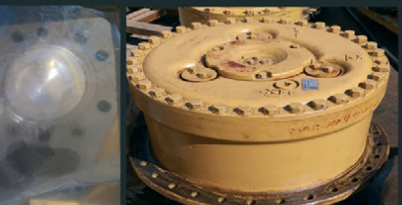
**D11R**  
 FINAL DRIVE



**988F-2 RECON**  
 S/EXCHANGE T/CONVERTER



**3412DI**  
 REMAN SUB



**D9T RECON FINAL DRIVE**  
 SERVICE EXCHANGE

**STRIPPED  
 ENGINES**

3304/6  
 3204  
 3126  
 3406  
 3408  
 3412  
 3508  
 3512  
 3516

C6.4  
 C7  
 C9  
 C11  
 C13  
 C15  
 C18  
 C27  
 C32

**MACHINES**

**EXCAVATORS**

225  
 317B  
 318B  
 320B  
 325B  
 330B  
 320D  
 323D  
 330D

**LOADERS**

920  
 930  
 936G  
 938G  
 950A/H  
 966G  
 980F/G  
 988B

[www.stmmining.co.za](http://www.stmmining.co.za)



**WesTrac**

**CAT**

**USED EQUIPMENT**

Ron Lanson : +61 418 927 625 | Email: [Ronald.Lanson@westrac.com.au](mailto:Ronald.Lanson@westrac.com.au)



**2010 CAT AD55B**

**AUD \$ 295,000**

SERIAL: JNW00176

STOCK: UM9796

HOURS: 23983

PERTH,  
WESTERN AUSTRALIA

ENCLOSED AIR CONDITIONED EROPS CAB,  
FIRE SYSTEM, HEAVY DUTY LINED BODY,  
LOW HOUR REBUILT COMPONENTS,  
AIR SUSPENSION SEAT, FAST FILL ENGINE,  
HYDRAULIC, TRANS, RADIATOR,  
FUEL AND MINE SPEC FITTED.



**www.AmPlant.co.za**

**SPECIALISED PLANT HIRE**



**www.AmPlant**



**Asphalt Equipment / Earthmoving Equipment**  
Milling Machines / Recyclers etc

Contact - Eddie Simpson  
Office : 015 293 1221 ext 304 / Cell : 082 904 7694  
Email : [simpsons@amplant.co.za](mailto:simpsons@amplant.co.za)

Quality used  
plant for sale



**ATLAS**  
MASJIENE

Corner of Great North & Stanley Road  
Brentwood Park AH, Johannesburg  
Dewald Hattingh: +27(0) 72 547 2198 +27(0) 11 973 3737



**BELL L2106D**  
R700 000,00 + VAT



**CATERPILLAR 320D**  
R950 000,00 + VAT



**CATERPILLAR 725**  
R650 000,00 + VAT



**CATERPILLAR 416F 4X4**  
R530 000,00 + VAT



**CATERPILLAR 140G**  
R950 000,00 + VAT



**CATERPILLAR 322**  
R480 000,00 + VAT



**CATERPILLAR 277B**  
R350 000,00 + VAT



**CATERPILLAR 120G**  
R550 000,00 + VAT

**ATLASMASJIENE.CO.ZA | [INFO@ATLASMASJIENE.CO.ZA](mailto:INFO@ATLASMASJIENE.CO.ZA)**

Page 8

volume 16 issue 11

machinery & equipment **earthbroker**





**RAMM Parts**  
adriaan@rammparts.co.za  
marc@rammparts.co.za

Adriaan 076 127 2977  
Marc 072 530 7373  
Rodney 073 103 9582

We are buying used machines, running and non running.



Komatsu PC220 for sale - Running



2006 Bell L2106D For sale, 12000 hours,  
5 cube coal bucket included in price  
R 550 000,00 + VAT



Komatsu PC270-7 for sale Running



Komatsu HM400-2 stripping for spares



Chieftain 1700 Powerscreen  
Complete Rebuild in progress  
For more info contact us



Volvo L180G Wheel Loader



Komatsu A375-5 stripping for spares



Kawasaki 85 Z5 stripping for spares



Volvo A35E stripping for spares



Buckets for sale , kawasaki Z85(new),  
Hitachi 870, Volvo, Doosan



Volvo A35D stripping for spares



Bell B40 Runner

158 Watermeyer Street, Witbank





**SPEC-CAST ENGINEERING**  
*Trusted to deliver*

# Bulk Materials Handling Products

## Bucket Elevators



**Steel Buckets**  
Suitable for elevating sharp, bulk density materials



**HDPE Buckets**  
Suitable for handling large volumes of all types of grains, feed and most food products



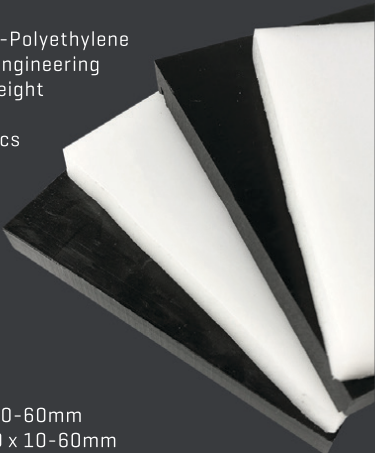
**Nylon Buckets**  
Suitable for high impact & abrasion resistance. Better heat resistance and handling hot, abrasive and sticky materials

## HDPE & UHMWPE Sheets

Ultra-High-Molecular-Weight-Polyethylene (UHMWPE) is thermoplastic engineering material, and its molecular weight can reach 4.5 to 9 million. It combines many characteristics such as abrasion-resistance, impact resistance/absorption, chemical corrosion resistance, low temperature resistance and self-lubrication etc.

Available in Black or White

**HDPE SHEET:** 2000 x 1000 x 10-60mm  
**UHMWPE SHEET:** 3080 x 1220 x 10-60mm



Contact our Bulk Materials Handling Specialist: Brian Jansen  
Cell: +27 71 147 6868 | Email: [brianj@spec-cast.co.za](mailto:brianj@spec-cast.co.za) | Tel: +27 11 396 1713/7 | [www.spec-cast.co.za](http://www.spec-cast.co.za)

# **FILTER CENTRE**

Leaders in Heavy-Duty Filtration

**Quality Lubricants  
NOW IN STOCK**



**Klenz**  
Pure Protection

[www.filtercentre.com](http://www.filtercentre.com)  
[info@filtercentre.com](mailto:info@filtercentre.com)  
031 700 9074





## CONTACT

Naren Birdju

+27 82 859 0766

Office: 011 395 0200

[plantsales@andru.co.za](mailto:plantsales@andru.co.za)

# ANDRU

## MINING

### "FOR SALE"

### "TOGETHER WE DELIVER!"



**BELL B20D 18000 LTR  
WATERCART X 3**



**BELL B25D  
ADT X 1**



**KOMATSU D65E-12  
DOZER X 11**



**KOMATSU GD675-5 / GD655-3  
GRADERS X 6**



**KOMATSU PC270 - 7  
EXCAVATOR X 1**



**KOMATSU WA430-6  
FEL X 3**



**LIEBHERR R974C-SHD/HD  
EXCAVATOR X 3**



**LIEBHERR R984C  
EXCAVATOR X 3**

89 Maple St, Pomona, Kempton Park, 1619  
26° 05' 55" S / 28° 15' 50" E





S. MICHELL,  
**THE PLANT FINDER CC**  
The **RIGHT EQUIPMENT** at the **RIGHT PRICE**

**USED PLANT AVAILABLE**



**1X USED HIDROMEK HMK62SS  
MINI-TLB'S**

YEAR: 2018 / SMR: 865 HRS  
FULLY ENCLOSED CABS WITH  
AIR-CON. AUXILIARY HYDRAULICS  
FITTED TO FRONT & REAR.  
MULTI-PURPOSE LOADER BUCKET.



**1X USED KOMATSU D61EX-23  
TRACKED DOZER**

S/NO: B50067  
YEAR: 2015  
SMR: 10000 HOURS  
PAT BLADE, WITH 3 SHANK RIPPER.



**1X USED ATLAS WEYCOR  
AR60 FEL**

YEAR: 2017 / SMR: 2268 HOURS  
QUICK HITCH, BUCKET &  
PALLET FORKS.  
AUXILIARY HYDRAULICS



**1X USED CAT 226B2  
SKIDSTEER LOADER**

SERIAL NO: MJH15131  
YEAR: 2010 / SMR: 5650  
QUICK HITCH, BUCKET &  
PALLET FORKS.





S. MICHELL,  
**THE PLANT FINDER CC**  
The **RIGHT EQUIPMENT** at the **RIGHT PRICE**

**USED PLANT AVAILABLE**



**1X USED CATERPILLAR  
938H FEL**

YEAR: 2012  
SERIAL NO: LKM01676  
SMR: 10530 HOURS



**1X USED CAT D7G  
DOZER**

YEAR: 1980  
SERIAL NO: 92V09714  
TILT BLADE, 3 SHANK RIPPER  
BERCO "SALT" LINK ASSEMBLIES



**1X USED JCB VM115D  
VIBRATORY ROLLER**

YEAR: 2011  
SERIAL NO: 1807554  
SMR: 1800 HOURS  
DUAL FREQUENCY/AMPLITUDE,  
DRUM DRIVE.



**1X USED JCB 406  
FEL**

SERIAL NO: 2318993  
YEAR: 2015 / SMR: 2850 HOURS  
QUICK HITCH, BUCKET &  
PALLET FORKS.  
KOHLER ENGINE.

**SHAWN MICHELL - 082 568 4033**  
Tel: 041-379 1717 / Fax: 041-379 4753  
[shawn@plantfinder.co.za](mailto:shawn@plantfinder.co.za)



**Follow & Like us on Facebook**  
[facebook.com/ThePlantFinder](https://facebook.com/ThePlantFinder)

**WWW.PLANTFINDER.CO.ZA**







**TEL : 017 843 2072**  
**CELL: 083 232 8713**  
**WWW.EARTHMACH.CO.ZA**



**SPECIALISING IN**  
**GALLION, DRESSER,**  
**KOMATSU, SEM &**  
**CATERPILLAR**



**MACS**  
**AUTO**  
**www.macsauto.co.za**



**MINING AND CONSTRUCTION EQUIPMENT**



**RMI**  
**RETAIL MOTOR INDUSTRY ORGANISATION**

**REPAIRS ON ALL TYPES OF EQUIPMENT**  
**CUMMINS ENGINE CONVERSION ON KOMATSU**  
**TLB'S / REPAIR & SUPPLY OF NEW RADIATORS**  
**BREAK & CLUTCH REPAIRS / GENERAL REPAIRS**  
**& REBUILDING / AUTO ELECTRICAL REPAIRS**  
**& REWIRING / FUCHS OILS & GREASES /**  
**FIELD SERVICE REPAIRS**



**BOSCH**  
**Automotive**  
**Electrical | Electronic**




**SEM**  
**A Caterpillar Brand**



**THE PERFORMANCE YOU NEED,**  
**THE SUPPORT YOU EXPECT**

**OTHER EQUIPMENT**





**SEM**  
**A Caterpillar Brand**

**GENIUNE SEM PARTS QUALITY AT ITS BEST**

Steyn St. 34, Carolina, 1185.  
PO Box 1446, Carolina 1185  
Tel. (017) 843 2072 Fax. 086 732 1739  
Cell. 083 232 8713

**chris@earthmach.co.za**  
**www.earthmach.co.za**  
VAT REG No. 4280260417  
BBEE Level 2



# THESE OEM'S HAVE CHOSEN



ATLAS COPCO

CASE

CLAAS

ESCORTS

JLG

LANDINI

MANITOU

TEREX

BOBCAT

CATERPILLAR

CUKUROVA

GEHL

JOHN DEERE

LIUGONG

MASSEY FERGUSON

VALTRA

XCMG

BULL

CHANGLING

DEUTZ FAHR

JCB

KOMATSU

MAHINDRA

NEW HOLLAND

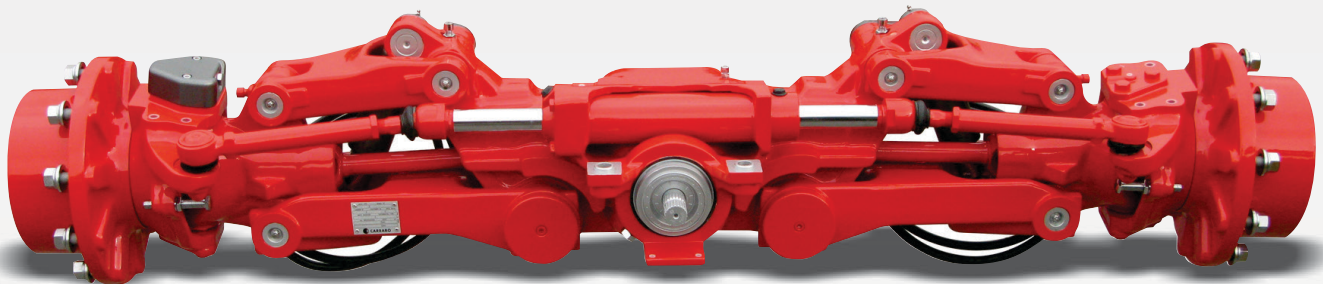
VOLVO



*Axles*

*&*

*Transmissions*



**1. Excerpt from The OEM's which have chosen us (2013). Spare Parts Magazine, (No.1), p.16.**



**Agri Earth**

+27 (0)861 888 008

+27 (0)83 327 3237 A/H

[LNE@LNE-AgriEarth.com](mailto:LNE@LNE-AgriEarth.com)

[f @LNEAgriEarth](https://www.facebook.com/LNEAgriEarth)

**[www.LNE-AgriEarth.com](http://www.LNE-AgriEarth.com)**

**CARRARO**  
Spare Parts  
Authorized Dealer

ATLAS COPCO, BOBCAT, BULL, CASE, CATERPILLAR, CHANGLING, CLAAS, CUKUROVA, DEUTZ FAHR, ESCORTS, GEHL, JCB, JLG, JOHN DEERE, KOMATSU, LANDINI, LIUGONG, MAHINDRA, MANITOU, MASSEY FERGUSON, NEW HOLLAND, TEREX, VALTRA, VOLVO, XCMG are trade brands registered by their owners and are only used for reference purposes of the application of our spare parts.



[www.espa.co.za](http://www.espa.co.za)

# ESP THE PROVEN ALTERNATIVE



## engine parts suitable for KOMATSU



4D95 / S4D95 • 6D95 / S6D95 • S4D102 / S6D102 • 4D105 / S4D105 • 6D105 / S6D105 • S6D108 • S6D110 • 6D125 / S6D125 • S6D140 • S6D155 • S6D170

### BENEFIT FROM OUR 9 MONTHS WARRANTY PERIOD ON NEW PARTS

ESP Johannesburg  
Tel: (011) 398-1700

ESP Benoni  
Tel: (011) 845-2911

ESP Pretoria  
Tel: (012) 804-6706

ESP Middelburg  
Tel: (013) 246-2520

ESP Pinetown  
Tel: (031) 705-4200

ESP Cape Town  
Tel: (021) 945-1030

ESP Port Elizabeth  
Tel: (041) 484-4575

ESP Bloemfontein  
Tel: (051) 432-4501

ESP Kimberley  
Tel: (053) 831-8349



ISO 9001 Certified

Manufacturers' names, numbers, symbols and descriptions are used for reference purposes only and it is not implied that any part listed is the product of the manufacturers.



[www.espa.co.za](http://www.espa.co.za)

# ESP THE PROVEN ALTERNATIVE



## engine parts suitable for CATERPILLAR



3046, 3054, 3056, 3064, 3066, 3114, 3116, 3126, 3176, 3196, 3204, 3208, 3304, 3306, 3406, 3408, 3412, D342, D343, C4.4, C6.6, C7, C9, C10, C11, C12, C13, C15, C16, C18, C27, C32

### BENEFIT FROM OUR 9 MONTHS WARRANTY PERIOD ON NEW PARTS

ESP Johannesburg  
Tel: (011) 398-1700

ESP Benoni  
Tel: (011) 845-2911

ESP Pretoria  
Tel: (012) 804-6706

ESP Middelburg  
Tel: (013) 246-2520

ESP Pinetown  
Tel: (031) 705-4200

ESP Cape Town  
Tel: (021) 945-1030

ESP Port Elizabeth  
Tel: (041) 484-4575

ESP Bloemfontein  
Tel: (051) 432-4501

ESP Kimberley  
Tel: (053) 831-8349



ISO 9001 Certified

Manufacturers' names, numbers, symbols and descriptions are used for reference purposes only and it is not implied that any part listed is the product of the manufacturers.



[www.espa.co.za](http://www.espa.co.za)

# ESP THE PROVEN ALTERNATIVE



## engine parts suitable for CUMMINS



V/VT378, V/VT504, V/VT903, 4BT3.9, 6BT5.9, 6CT8.3, L10, M11, NH220/743, NT855, N14, KT/KTA19, KT/KTA38, KTA1150

**BENEFIT FROM OUR 9 MONTHS WARRANTY PERIOD ON NEW PARTS**

ESP Johannesburg  
Tel: (011) 398-1700

ESP Benoni  
Tel: (011) 845-2911

ESP Pretoria  
Tel: (012) 804-6706

ESP Middelburg  
Tel: (013) 246-2520

ESP Pinetown  
Tel: (031) 705-4200



ESP Cape Town  
Tel: (021) 945-1030

ESP Port Elizabeth  
Tel: (041) 484-4575

ESP Bloemfontein  
Tel: (051) 432-4501

ESP Kimberley  
Tel: (053) 831-8349

ISO 9001 Certified

Manufacturers' names, numbers, symbols and descriptions are used for reference purposes only and it is not implied that any part listed is the product of the manufacturers.



[www.espa.co.za](http://www.espa.co.za)

# ESP THE PROVEN ALTERNATIVE



## engine parts suitable for VOLVO earthmoving machines



ADT A20, A25, A30, A35, A40 • Wheel Loader L60, L70, L90, L110, L120, L150, L180 • Excavator EC210, EC240, EC290, EC360, EC460 • TLB BL61, BL71

### BENEFIT FROM OUR **9 MONTHS** WARRANTY PERIOD ON NEW PARTS

ESP Johannesburg  
Tel: (011) 398-1700

ESP Benoni  
Tel: (011) 845-2911

ESP Pretoria  
Tel: (012) 804-6706

ESP Middelburg  
Tel: (013) 246-2520

ESP Pinetown  
Tel: (031) 705-4200

ESP Cape Town  
Tel: (021) 945-1030

ESP Port Elizabeth  
Tel: (041) 484-4575

ESP Bloemfontein  
Tel: (051) 432-4501

ESP Kimberley  
Tel: (053) 831-8349



ISO 9001 **Certified**

Manufacturers' names, numbers, symbols and descriptions are used for reference purposes only and it is not implied that any part listed is the product of the manufacturers.





# All Africa Supplies

GLOBAL REACH - LOCAL SUPPLY

[www.allafricasupplies.net](http://www.allafricasupplies.net)

011 918 9976

Enquiries: [sales@allafricasupplies.net](mailto:sales@allafricasupplies.net)

228 All Black Road Anderbolt Boksburg



\*All manufacturers names, numbers, symbols and pictures are for reference only. It does not imply that any of the parts are the product of these manufacturers.

# REMAN CENTRE

Engines and Transmissions are backed by a dyno report to confirm calibrations and specifications

**WE DO THE FOLLOWING, UNDER ONE ROOF:**

**ENGINE OVERHAULS, TRANSMISSION OVERHAULS, WHEEL STATION REBUILDS, AXLE REBUILDS**



**WE CARRY A FULL 6 MONTH 1000HR WARRANTY**



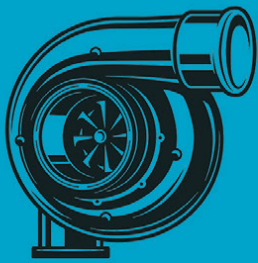
**AUTHORIZED  
PARTS DISTRIBUTOR**

Follow us on Social Media

- Facebook / All Africa Supplies
- Google+
- Instagram / @allafricasupplies

[www.allafricasupplies.net](http://www.allafricasupplies.net)





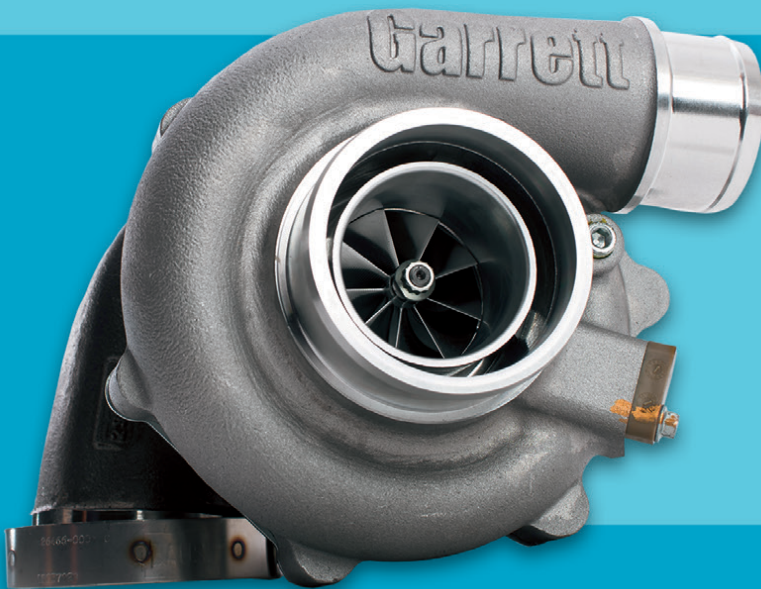
# TURBOWORKS

*"Best quality turbochargers - no compromise"*

For all Construction and Mining machine turbocharger requirements, contact TURBOWORKS for the best and most cost-effective solution.

## TURBOCHARGERS

- New
- Reconditioned, service-exchange
- Repairs



## SECTORS

- Mining
- Plant hire
- Transport
- Agriculture
- Passenger vehicle
- Generators

**POPULAR SERVICE-EXCHANGE TURBOCHARGERS,  
AVAILABLE FOR IMMEDIATE DELIVERY.**



- All makes and models
- 12 Months warranty
- Free "Strip-and-quote"
- Pick-up and deliver
- Supplying the entire African continent



57 Adriana Crescent, Gateway Industrial Park, Rooihuiskraal, Centurion

Tel: +27 12 653 7507

Email: [sales@turboworks.co.za](mailto:sales@turboworks.co.za)

[www.turboworks.co.za](http://www.turboworks.co.za)

After-hours: +27 82 824 8037





ON THE RIGHT  
TRACK WITH

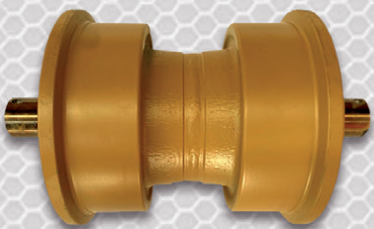
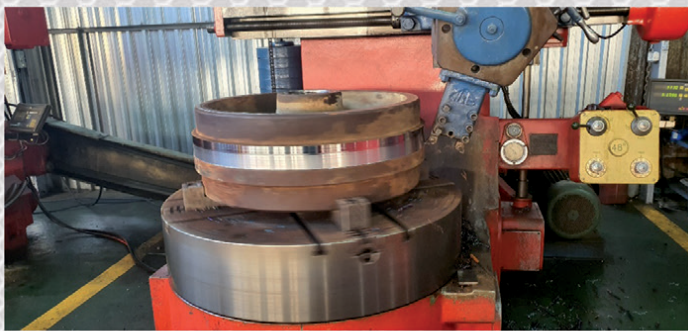
**CENTRAX**  
Since 1974  
[www.centraxsa.com](http://www.centraxsa.com)

Head Office: Tel: (011) 392 5055 / (011) 392 5056 / Fax: (011) 392 3091  
Durban Branch: Tel: 086 123 6872 / Fax: 086 529 4683 / Steve: 083 613 0664

EXPERIENCE THE CENTRAX WORLD CLASS CONVERSION & REBUILD PROCESS  
**YOUR ONE STOP UNDERCARRIAGE SHOP**



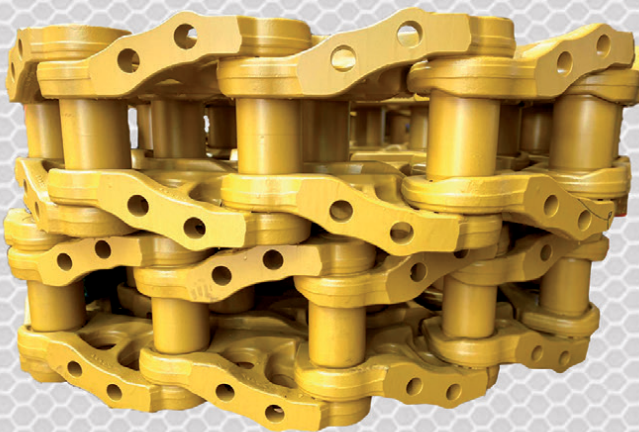
DOUBLE FLANGE  
ROLLERS



SINGLE FLANGE  
ROLLERS



IDLERS



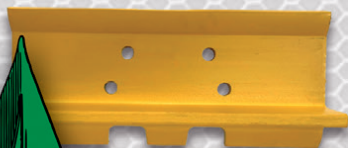
LINK ASSEMBLY'S



SPROCKET SEGMENTS



SPROCKETS



GROUSER SHOES



**“LET’S DO THIS”**

Manufacturers names, numbers and descriptions are used for reference purposes only & is not implied that any parts listed is the product of these manufacturers.





**ON THE RIGHT  
TRACK WITH**

# **CENTRAX**

Since 1974

[www.centraxsa.com](http://www.centraxsa.com)

Head Office: Tel: (011) 392 5055 / (011) 392 5056 / Fax: (011) 392 3091  
Durban Branch: Tel: 086 123 6872 / Fax: 086 529 4683 / Steve: 083 613 0664

## **EXPERTS IN UNDERCARRIAGE & WEAR PARTS**

**OUR TEAM OF TRAINED EXPERTS WILL KEEP YOUR EQUIPMENT ON TRACK**



**CENTRAX - YOUR MARKET LEADER IN THE SUPPLY OF ALL YOUR BUCKET PROTECTION AND WEAR PARTS, ASSURING YOU OF PREMIUM COST PER HOUR PERFORMANCE ACROSS OUR COMPREHENSIVE PRODUCT RANGE**

**TEAM CENTRAX WOULD LIKE TO WISH YOU & YOUR FAMILY A SAFE AND BLESSED CHRISTMAS AND A PROSPEROUS 2021**



**320C EXTENDED BOOM EXCAVATOR FOR HIRE. CONTACT TREVOR: 083 608 5550**



Manufacturers names, numbers and descriptions are used for reference purposes only & is not implied that any parts listed is the product of these manufacturers.





Ruspet cc t/a

# RUSPET EXHAUSTS

*We Muffle the Industry*

**MANUFACTURERS OF EARTHMOVING,  
TRUCK & GENSET EXHAUSTS**

**WE HAVE MOVED TO NEW PREMISES**

TEL: 011 827 2824  
011 827 2826  
FAX: 011 827 2850

NO.3 DEKEMA ROAD  
284 DEKEMA ROAD  
WADEVILLE



**Specialising in earthmoving  
power transmission rebuilds of:**

- Front end loaders
- Final drives
- Drop boxes (transfer case)
- Differentials etc.

**MANUFACTURE OF ALL  
GEARS AND REPAIRS**



**REPAIR CARRIER  
HOUSINGS/ HUBS**



Tel: 031 701 3500 | Cell: 083 383 4943 | Fax/Email: 086 224 3982  
Email: [eastcoastgears@gmail.com](mailto:eastcoastgears@gmail.com) | 24 Henwood Road, Pinetown, KZN



# MZANTSI TRANSMISSIONS

6 Van der Bijl Street, Alrode South, Alberton

**We offer specialised transmission repairs  
for heavy duty & on highway machines**




**WE OFFER SPECIALISED TRANSMISSION REPAIRS  
FOR HEAVY DUTY & ON HIGHWAY MACHINES**

**BELL • TEREX • CAT • JOHN DEERE  
HITACHI • DAEWOO • ZF • ALLISON • CLARK • FUNK**

**We offer dyno testing on the following boxes:**

**ZF - 4WG92, 4WG94, 4/6WG180/200/210/310  
Allison - MD3560, HD4560**

**WE PURCHASE  
2ND HAND TRANSMISSIONS**

**Bell B17B, B20B, B25B, 1206 & B40D  
Transmissions in stock**

**Email: [info@gearboxes.me](mailto:info@gearboxes.me) | Tel: 011 868 5130 | Fax: 086 634 7904 | Cell: 071 684 5784**



**THOMAS MITTAG**  
Cell: +27 72 545 6223  
Mail: [info@mae-equipment.com](mailto:info@mae-equipment.com)

**MAE Equipment**  
Witbank/Riverside  
(Yard)

[www.mae-equipment.com](http://www.mae-equipment.com)

# MAE

## EQUIPMENT

### CAT349F



**2015 model**  
5.089h (read-off) / import unit  
**Call for Price**

### CAT 390DL-ME



**2014 model**  
9.880h (read-off)  
**Call for Price**

### DM30 DRILL RIG



**2008 model**  
ready for production  
**Call for Price**

### ATLAS DM30 DRILL RIG



**2012 model**  
low hours  
**Call for Price**

### SANDVIK DP1500 PANTERA



**2010 & 2012 model**  
refurbished  
**4 units available**

### ATLAS-COPCO D65 DRILLS



**D65 FlexiRoc & D65 SmartRoc**  
Drills available  
**Call for Details**

### KOMATSU D155AX-7



**2013 model**  
refurbished / imported EU  
**Call for Price**

### KOMATSU D275 DOZER



**2012 model**  
5.700h / new undercarriage  
**Call for Price**

### D8T DOZER



**2011 model**  
import unit  
**ZAR 3.700.000**

### CAT D9R



**2013 model**  
3 units available / new serviced  
**Call for Price**

### KOMATSU D375 DOZER



**2011 & 2008 models**  
available  
**Call for Price**

### CAT773F WATERBOWSER



**2008 model**  
**Call for Price**

### VOLVO A30D



**2008 model**  
conversion to waterbowser  
**ZAR 1.550.000**

**WE BUY ALL KINDS OF EARTHMOVING, CONSTRUCTION OR MINING MACHINERY**

**WE PAY CASH WITHIN 24 HOURS**

**PLEASE CONTACT OR SEND OFFERS TO [INFO@MAE-EQUIPMENT.COM](mailto:info@mae-equipment.com)**

**„Your Partner for new & used Machinery and Equipment.“**

[www.mae-equipment.com](http://www.mae-equipment.com)

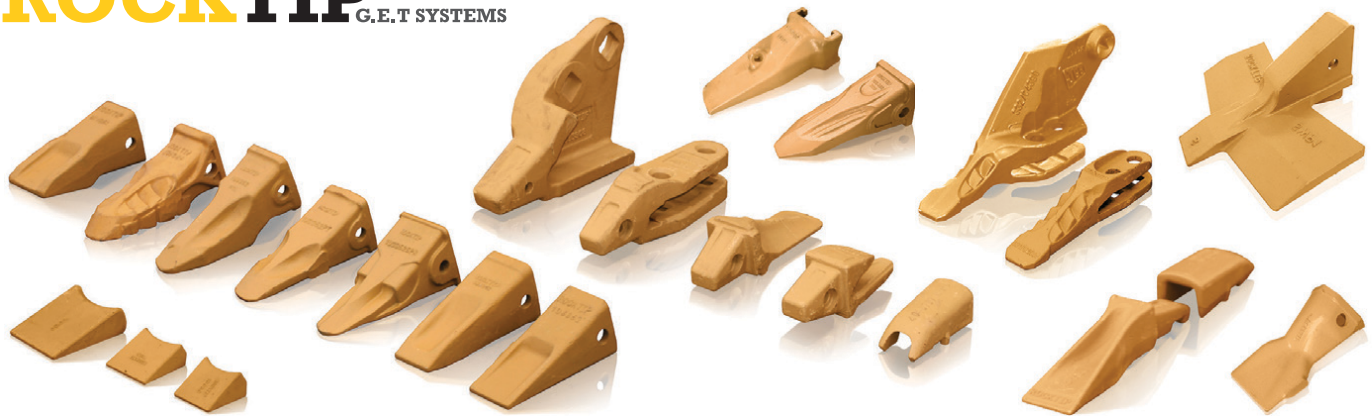




**SPEC-CAST WEAR PARTS**  
*Trusted to deliver*

Spec-Cast Wear Parts (PTY) Ltd is a leading manufacturer specializing in the supply of ground engaging tools, undercarriage, undercarriage components, track frames, suspension group replacement parts, agricultural wear parts, general castings and forgings for the construction, mining and agricultural industries.

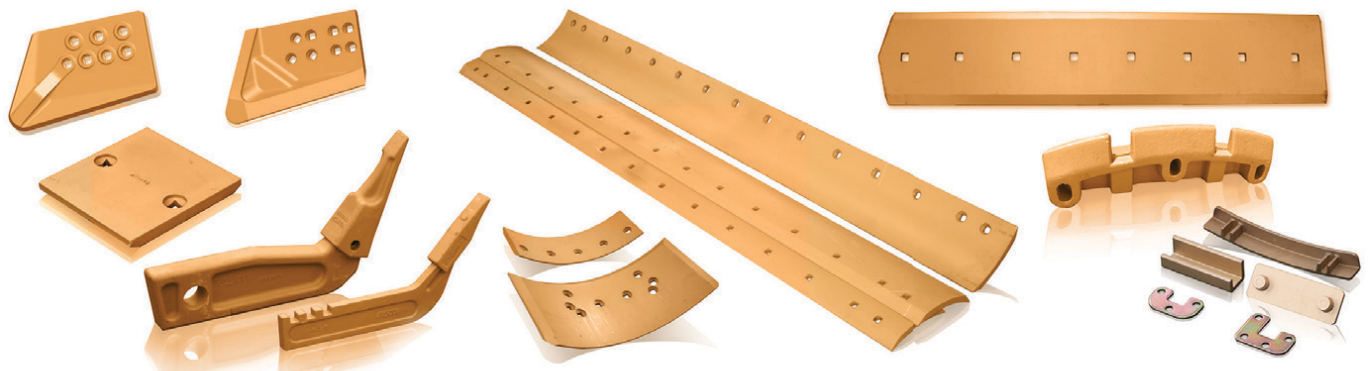
**ROCKTIP** G.E.T SYSTEMS



Teeth and Adapters for Various Models



Wear Protection



Blades, Cutting Edges, End Bits and Grader Wear Parts

**Manufacturers of G.E.T to fit:**

CATERPILLAR	TEREX	ESCO	LIEBHERR	H & L	BOBCAT
KOMATSU	JCB	HYUNDAI	DAEWOO	BUCYRUS	MTG
NEW HOLLAND	MASSEY FERGUSON	CASE	BOFOR	LIUGONG	KUBOTA

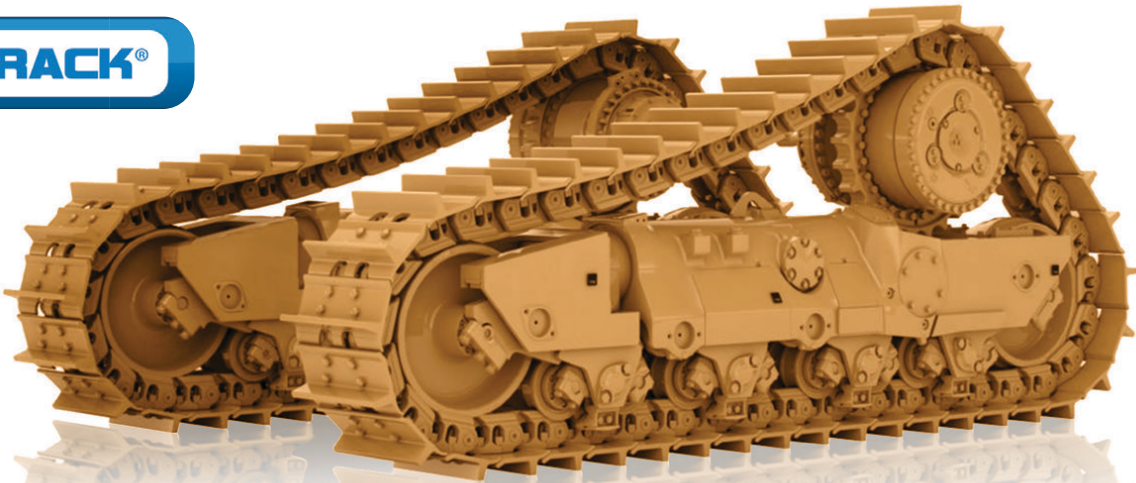
Manufacturer's names, numbers, symbols and descriptions are used for reference purposes only and it is not implied that any part listed above is the product of the manufacturers.



Spec-Cast offers a wide range of undercarriage components covering the entire range of modern crawler machine applications in the construction, mining, utility, forestry, road, building, and agricultural industries. Covering all makes and models of machines, from drilling machines to hydraulic excavators, as well as dozers, auxiliary machines, conveyors and customised solutions.



**SPEC-CAST WEAR PARTS**  
*Trusted to deliver*



**Spec-Cast Wear Parts is an authorized Dealer for ITM and VEMATrack undercarriage parts.**  
Call our undercarriage experts today!



**Chains**



**Rollers**



**Sprockets**



**Idlers**



**Shoes**



**Rubber Tracks**

CATERPILLAR	HITACHI	KOMATSU	LIEBHERR
6018 RH90	EX1200	PC1250	R9100
6030 RH120E	EX1800/1900	PC2000	R9150
6040/50	EX2500/2600	PC3000	R9250
RH170/200	EX3500/3600	PC4000	R9350
6060 - RH340	EX5500/5600	PC5500	R9400
7495 - 495HR11	EX8000	D375	R995
D8, D9, 10 & D11		D475	R996
			R9800

**Our track workshop is available to support all your undercarriage needs**

Turning of Pins & Bushes  
Remove/Fit Track Shoes

Re-Build Idlers  
Re-Shell Rollers

Re-Strip Grouser Shoes  
Re-Rim Sprockets

With branches and distributors located in prime areas throughout South Africa, as well as several African countries, Spec-Cast is able to provide the Earthmoving, Mining and Agricultural industries with an efficient, cost effective supply and distribution network.

**JHB HEAD OFFICE**

+27 11 396 1717/13  
aimee@spec-cast.co.za  
11 Elgin Street, Pomona,  
Kempston Park, Johannesburg

**[www.spec-cast.co.za](http://www.spec-cast.co.za)**

**MIDDELBURG**  
+27 13 813 1413  
middelburg@spec-cast.co.za  
6 Jaspis Street  
Middelburg, Mpumalanga

**NORTHERN CAPE**  
+27 53 010 1304  
northerncape@spec-cast.co.za  
Section C3, Portion of Farm Waterraad  
Kathu, Northern Cape

Follow us:







SPEC-CAST WEAR PARTS

*Trusted to deliver*

# CATERPILLAR & KOMATSU DOZER & EXCAVATOR TRACK FRAMES



## SERVICE EXCHANGE

Our Service Exchange Program provides you with a high-quality track frame rebuild solution. All PEX units are like-new, quality track frames that is on hand for delivery to keep your machine productive and keep your costs minimal.

Spec-Cast’s PEX units gives you the advantage of an immediate trade-out of critical components that allows your machine to get back to work as quickly as possible.

## TRACK FRAME REPAIRS

Spec-Cast offers partial repairs and full track frame rebuilds, using only quality approved parts including some OEM components that is critical to the longevity of the frame. Strict adherence to our QCP [Quality Control Procedures] provides peace of mind and builds trust in the Spec-Cast Brand. Spec-Cast’s Track Frame Repairs covers a wide range of crawler machines types such as dozers, excavators and shovels across multiple manufacturers and applications.

## TRACK FRAME COMPONENTS

Caterpillar and Komatsu Dozer aftermarket track frame components of the highest quality and standard are stocked for immediate supply.

- Bogie Pins and Bogie Pads
  - Roller and Idler Caps
  - Track Guides
- Equalizer Bars and repair components
  - Trunnion’s and repair components
- Bushings and Seals
  - Minor Bogies



### JHB HEAD OFFICE

+27 11 396 1717/13  
[undercarriage@spec-cast.co.za](mailto:undercarriage@spec-cast.co.za)  
11 Elgin Street, Pomona,  
Kempton Park, Johannesburg

### [www.spec-cast.co.za](http://www.spec-cast.co.za)

**MIDDELBURG**  
+27 13 813 1413  
[middelburg@spec-cast.co.za](mailto:middelburg@spec-cast.co.za)  
6 Jaspis Street  
Middelburg, Mpumalanga

**NORTHERN CAPE**  
+27 53 010 1304  
[northerncape@spec-cast.co.za](mailto:northerncape@spec-cast.co.za)  
Section C3, Portion of Farm Waterraad  
Kathu, Northern Cape

Follow us:





**Repairs to all OFF and ON Highway Transmissions, Torque Convertors, Gearboxes, Differentials and Power Take Off's**



**VORTEX**  
TRANSMISSIONS

Tel: 011 452-4430/1  
Parts: 011 452 3296 / 452 3390  
Johan: 082 333 1005  
Jan: 082 333 1004  
Fax: 011 609 5302  
Email: [vortex3@mweb.co.za](mailto:vortex3@mweb.co.za)



**Allison Fuller • Clark • Caterpillar • Funk Twin Disk**



**SERVICE UNITS:**

- AT 545 bell (spec)
- MT 643 bell (spec)
- MD 3560 P TID 2
- MD 3560 P TID 3
- MD 3060 TID 3
- 4500 ORS GEN 4
- 4500 ORS R GEN 4 LIFE FILTER Bell B40D
- 4500 ORS R GEN 4 Bell B50E
- Terex engine PTO 'S TR 60
- Euclid and Terex transmission PTO'S
- Euclid 6610A CEC2
- Terex 6610AR CEC 2
- Euclid 6620A

**UNITS THAT WE ALSO DO:**

- Bell grader transmissions
- Cat transmissions
- Funk transmissions
- Terex & Euclid Differential center portions
- Bell differential center portion
- Chelsea PTO'S
- Terex engine PTO'S TR 100



Vortex Transmissions sell genuine Allison parts for all our transmissions Dyno testing is done in house and all transmissions that are tested have test reports





**Hennie Nelson**  
South Africa, Witbank  
+27 82 414 1393  
sales@inmine.co.za



VARIETY OF  
**CATERPILLAR & HITACHI ENGINES**



**CAT 16H GRADER ENGINE**  
RUNNER



**CATERPILLAR 777 / 785**  
**D11 TORQUE CONVERTERS**



**CAT 785 RECONDITIONED**  
& USED FINAL DRIVE



RECONDITIONED  
**CAT 773 DIFF**

**WWW.INMIME.COM**

Plot 26 Naauwpoort, Benicon Park, Witbank 1036  
Mpumalanga, South Africa



### **CAT 773F Stripping for parts**



Available parts:

2 x Final drives	All suspension cylinders
1 x Diff	1 x Radiator pack
1 x Transmission	

### **CAT 773F Bowl**



### **Stripping 2 x Cat 992G**



**PLEASE ENQUIRE FOR  
INFORMATION ON  
AVAILABLE PARTS**

### **CAT 789C Used Engine**



### **SET / RECONDITIONED CAT 6030 FACE SHOVEL CYLINDERS**



**RH120 / RH200  
& RH340 Sprockets**



**2 x Boom Lift Cylinders / 2 x Stick Cylinders  
2 x Bucket Tilt Cylinders**



**RH120E Reconditioned  
Cylinders**



**INMINE have a full operational workshop, that does all work inhouse  
from Idler rebuilds to Grouser shoe restripping.**





A Part of  Torre Industries

# LOOKING FOR EXCLUSIVE WEAR PARTS FOR YOUR EARTHMOVING OPERATIONS?



[www.tags.co.za](http://www.tags.co.za)



**Call us today and we will get your exclusive wear parts for  
effective earthmoving to you in a jiffy!**



## TGS – YOUR FIRST CHOICE SUPPLIER

If you are in the earthmoving industry, you will most certainly know how crucial it is to have access to regular parts, tools and spares for your earthmoving equipment.

Breaks in service and downtime, while waiting for parts to arrive, can cause massive delays and have a great impact on the productivity of your business, sometimes resulting in financial losses.

It is therefore **essential** to have access to a supplier that will always be able to provide you with the required **wear parts** for your earthmoving and other heavy duty equipment.

The very nature of the business demands parts and tools that can deal with a variety of conditions, and getting hold of the **best** low to high wear parts is crucial to the success of your earthmoving operations.

At **TGS™ Tractor & Grader Supplies**, we have been in the business since 1994 and we understand the industry of heavy duty machinery.

We know that our customers have different requirements, and we make it our business to understand your operation and to provide you with the particular parts and tools that you need, in order to keep your operation running efficiently.

We stock products from reputable global manufacturers and we have full confidence in the wide range of spares wear parts and tools that we provide every day.

Our sales technicians are some of the best trained and knowledgeable people in the business, and they are incentivised to provide our clients with great products and **exceptional service**.

In order to keep our technicians well-informed about our products, we conduct regular training sessions to keep them abreast of developments in the industry and any new product knowledge that may help to improve your operation.

**We make it our business to keep your business running with exceptional products and excellent service.**

You can also **trust us** to provide reliable advice and cost-effective alternatives to certain well-known name brands of high wear parts for earthmoving equipment and other machinery.

If you would like to find out more about our extensive, high-quality product range or viable alternatives to your usual products, talk to our sales team.

We will only be too happy to give you the advice and products that you need.

If you are shopping around for the best quality wear parts, take the time to get in touch with us at **TGS™ Tractor & Grader Supplies**.

**+27 10 001 9200 / +27 11 392 7533**  
**[www.tags.co.za](http://www.tags.co.za) or email: [info@tags.co](mailto:info@tags.co).**





**DURA**  
EQUIPMENT  
**SALES**

**AFFORDABLE** ✓ **RELIABLE** ✓ **TRUSTED** ✓

**WWW.DURASALES.CO.ZA**



✓ 2018 KAMAZ B65222 6X6  
36000KM



✓ 2011 CAT 966H  
15350 HOURS



✓ 2011 CAT D8R  
10000 HOURS



✓ NEW KOBLCO SK755R-3



✓ 2016 BOBCAT B700 EC  
2379 HOURS



✓ 2007 KOMATSU D65E-12  
11300 HOURS



✓ 2008 CAT 428E  
5012 HOURS



✓ 2008 JCB 540-170  
8539 HOURS



✓ 2009 CAT CS533E  
2795 HOURS



✓ NEW LOVOL FL966-II  
FULL WARRANTY



✓ NEW LOVOL FL956H  
3.0 CUBE BUCKET



✓ NEW LOVOL FL936H  
2.0 CUBE BUCKET

**Visit our website on [www.durasales.co.za](http://www.durasales.co.za) for updated stock.** T&C APPLY

**JHB SHOWROOM**  
46 Viewpoint Road  
Bartlett, Boksburg

**CPT SHOWROOM**  
30 Kiaat Street  
Kraaifontein, WC

**Contact our showrooms:**

Gauteng: +27 (0) 11 918 4760  
Western Cape: +27 (0) 21 988 6618  
North West: +27 (0) 82 443 6646  
KwaZulu Natal: +27 (0) 31 705 1770

**JHB SALES TEAM:**

Curtis: +27 82 359 9199  
Prinsloo: +27 71 611 7281  
Coenie: +27 83 251 8046  
Jp: +27 66 160 5505  
Jerry: +27 82 895 5611

**CPT SALES TEAM:**

Gerrie: +27 82 950 7040  
Pottie: +27 83 600 0729





**AFFORDABLE** ✓ **RELIABLE** ✓ **TRUSTED** ✓

**WWW.DURASALES.CO.ZA**



✓ 2008 CAT D6T  
13791 HOURS



✓ 2014 CAT 140K  
4550 HOURS, FULLY REFURBISHED



✓ NEW 1000L DIESEL BOWSER



✓ NEW AMMAN ARS122



✓ 1999 BELL B25C  
23,000L WATERTANKER



✓ 2017 CAT 226B-3  
1076 HOURS



✓ 1998 BELL B25C 6X6  
FULLY REFURBISHED



✓ 2011 BELL B50D  
9900 HOURS



✓ 2003 GROVE TR250 CRANE  
29915 HOURS



✓ 2014 SDLG LG958  
6947 HOURS



✓ 2017 MERC-BENZ AXOR 1823  
13 875 KM



✓ NEW LOVOL FR330D

**Visit our website on [www.durasales.co.za](http://www.durasales.co.za) for updated stock.** T&C APPLY

**JHB SHOWROOM:**  
46 Viewpoint Road  
Bartlett, Boksburg

**CPT SHOWROOM:**  
30 Klaat Street  
Kraaifontein, WC.

**Contact our showrooms:**

Gauteng: +27 (0) 11 918 4760  
Western Cape: +27 (0) 21 988 6618  
North West: +27 (0) 82 443 6646  
KwaZulu Natal: +27 (0) 31 705 1770

**JHB SALES TEAM:**

JP: +27 66 160 5505  
Coenie: +27 83 251 8046  
Jerry: +27 82 895 5611  
Curtis: +27 82 359 9199  
Prinsloo: +27 71 611 7281

**CPT SALES TEAM:**

Gerrie: +27 82 950 7040  
Pottie: +27 83 600 0729





**We are stripping earthmoving  
equipment for spares.**

**GRADERS**



CAT 140 G/H  
CAT 16 G  
BELL 872 D

**ROLLERS**



STA VV 900  
BW 211 D-3  
BW 212 D-2  
BW 212 D-2A

**DUMPERS**



BELL B17 B  
BELL B20 B/C/D  
BELL B35 D  
KOMATSU HM 400-1  
CAT 740

**EXCAVATORS**



SUMITOMO SH 200-1/3  
SUMITOMO SH 450-3  
CAT 320 LME  
CAT 324  
CAT 330 B  
CAT 375 L  
CAT 385-B/C  
KOMATSU PC 220-6  
KOMATSU PC 200-7  
KOMATSU PC 300-7  
BELL KATO H 820-11  
BELL KATO HD 1023

**WHEEL LOADERS**



CAT 924 G  
CAT 962 G  
FURUKAWA FL170/230/330  
KOMATSU WA 120-3  
KOMATSU WA 250-3/5  
KOMATSU WA 280-3  
KOMATSU WA 320-3  
KOMATSU WA 470-5  
KAWASAKI Z85-IV  
KAWASAKI Z 90-IV

**DOZERS**



KOMATSU D 65-8  
KOMATSU D 85-18/21  
KOMATSU D 275-2/5  
KOMATSU D 375-2/3/5

**Contact us on:** Magda: +27 (0) 72 056 3341

email: [admin@duraparts.co.za](mailto:admin@duraparts.co.za)  
**WWW.DURASALES.CO.ZA**





**WORN  
GRADER  
BLADES?  
THINK  
WEARPACT.**

## **MANUFACTURERS, SUPPLIERS AND STOCKISTS OF:**

**CUTTING EDGES | MOLD BOARD LINERS | GRADE BLADES  
TIPS AND ADAPTORS | RIPPER SHANKS | END BITS**

**WE MANUFACTURE, SUPPLY AND STOCK G.E.T. FOR:**

**CAT | KOMATSU | VOLVO | HITACHI | BELL | LIEBHERR | JCB | CASE  
TEREX | FURUKAWA | LIUGONG | SANY | SANYO | SHANTUI | FIAT**

**WEARPACT ALSO OFFERS A SPECIALIST BUCKET REPAIR SERVICE**

# **WEARPACT**

☎ **011 421 4705 / 011 845 3234 / 011 845 3272**

☎ **011 421 8761**

✉ **mwwrp@mweb.co.za**

\*MANUFACTURER'S NAMES, NUMBERS & DESCRIPTIONS ARE USED FOR REFERENCE PURPOSES ONLY. IT IS NOT IMPLIED THAT ANY PART LISTED IS THE PRODUCT OF THE MANUFACTURERS.

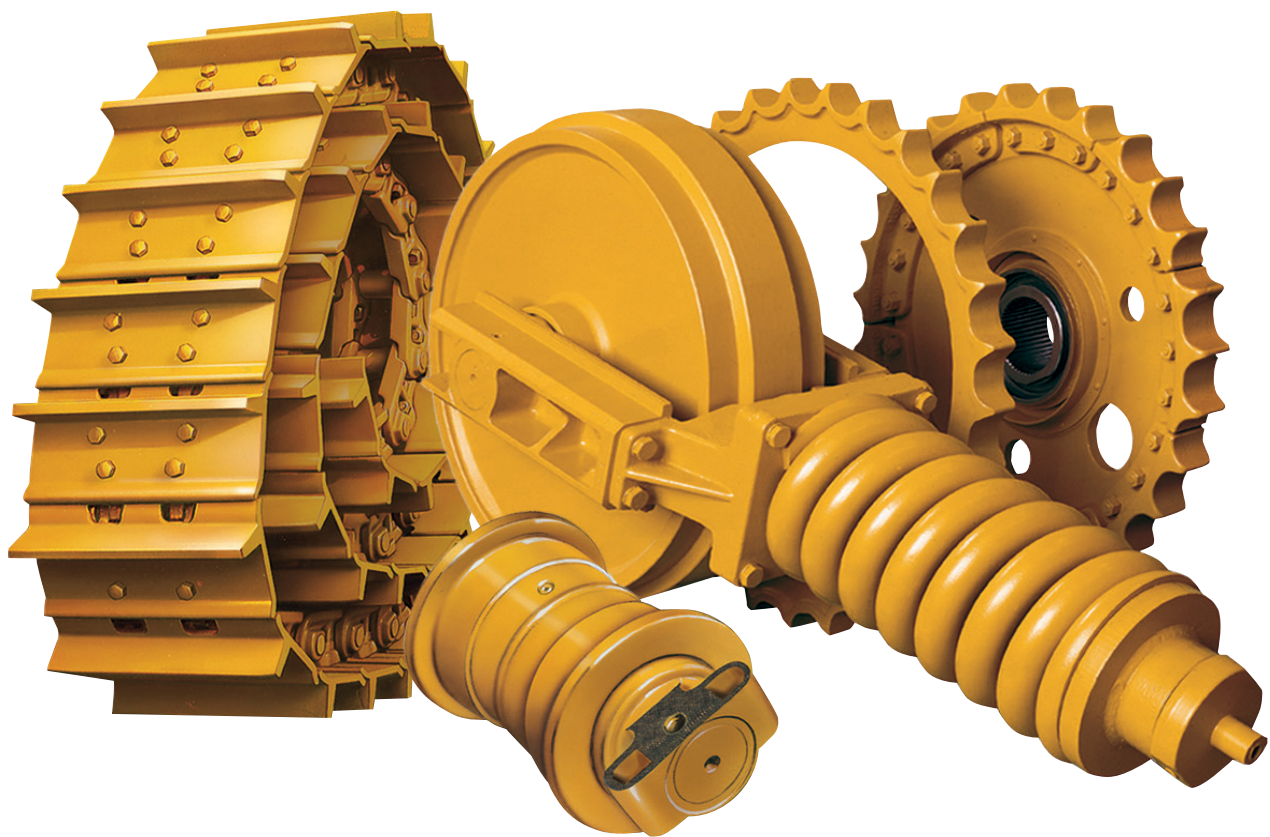
**[www.wearpact.co.za](http://www.wearpact.co.za)**





[www.blumaq.com](http://www.blumaq.com)

Follow us on:



Following our success as **Berco** product distributor in Zambia, Blumaq South Africa has now also been appointed a distributor for this quality product in South Africa.

Blumaq South Africa now also offers **Berco quality undercarriage parts and repairs** from our operation based in Wadeville, Johannesburg.

Our fully serviced Track Undercarriage workshops offers a full service including Turning of Pins & Bushes / Re-stripping of Grouser shoes / Track Link repairs / Idler and Roller rebuilds / Track Frame Rebuilds.

Contact us today for a free on site wear assessment of your undercarriage components.

**Contact:**  
+27 11 966 5092 **Johannesburg**  
+26 096 0923 962 **Kitwe**  
[john.beukes@blumaq.com](mailto:john.beukes@blumaq.com)

**Berco dealer in  
Spain, Zambia,  
Turkey and  
South Africa:**



Caterpillar®, komatsu®, cummins®, volvo® and case® are trade brands registered by their owners and are only used for reference purpose of the application of our spare parts.





[www.blumaq.com](http://www.blumaq.com)

Follow us on:



## Spare parts suitable for VOLVO

We offer a wide range of items with immediate delivery for your **VOLVO** earthmoving equipment.



## Alternative spare parts for Caterpillar

We offer a wide range of items with immediate delivery for your **CATERPILLAR** earthmoving equipment.

**Berco dealer in Spain, Zambia, Turkey and South Africa:**



**Contact:**

+27 11 966 5092 **Johannesburg**  
+26 096 0923 962 **Kitwe**  
[john.beukes@blumaq.com](mailto:john.beukes@blumaq.com)

Caterpillar®, komatsu®, cummins®, volvo® and case® are trade brands registered by their owners and are only used for reference purpose of the application of our spare parts.

**Branches in Spain:** Alicante | Almería | Asturias | Barcelona | Galicia | Madrid | Mérida | Ponferrada | Sevilla | Tenerife | Zaragoza  
**Branches in the world:** Chile | United States | France | Portugal | Turkey | China | Russia | Italy | Romania | South Africa | Zambia | Peru





**The seat  
CONNECTION**  
*Established 1991*

**011 452 6802**  
[www.seatconnection.co.za](http://www.seatconnection.co.za)  
[info@seatconnection.co.za](mailto:info@seatconnection.co.za)  
102 8th Avenue, Edenvale, 1609

Follow us on Facebook  
[facebook.com/TheSeatConnection](https://facebook.com/TheSeatConnection)

Whatsapp call us on  
**+27 11 452 6802**

**New seats**

**Rebuilds**

**Repairs**



ISRI 3000/350



GAMEVIEW



AIR SUSPENSION



ISRI 6860/870 NTS

Quality service, the secret to our success.



**AZREL**  
equipment



AZREL equipment are buyers and sellers of used Industrial, Mining and Earth moving engines, parts and components.

Contact:

Mike: 083 230 3118      Rob: 076 942 2089  
Email: [mike@azrelequipment.com](mailto:mike@azrelequipment.com)

AZREL equipment also offers diagnostics software for the mining Industry. We have the software to help YOU with part numbers and schematics for most popular brands

**Earthmoving  
Specialist**



**OLD & NEW  
GENERATION EXPERIENCE**



**FULL DIAGNOSTIC TROUBLESHOOTING**

**REPAIRS, SPARES & MAINTENANCE TO  
LEADING EARTHMOVING MACHINERY**

SPECIALISING IN: CAT ECPC, ICM COUNTERSHIFT  
& POWERSHIFT TRANSMISSION REBUILDING

Carlos Caroto: 079 519 6769 | Email: [jennycaroto@live.co.za](mailto:jennycaroto@live.co.za)

**Earthmoving  
Specialist**

Old & New  
Generation Experience



**WE SPECIALIZE IN CUMMINS ENGINES**

**REPAIRS, SPARES  
& MAINTENANCE TO  
LEADING EARTHMOVING  
MACHINERY**

Full Diagnostic  
Troubleshooting

Carlos Caroto: 079 519 6769 | Email: [jennycaroto@live.co.za](mailto:jennycaroto@live.co.za)



# **BELL**

## Care Packages

**Caring for  
you, caring for  
your machine**

## **Unlock great customer benefits:**

- **Manage service costs**
- **Reduced pricing**
- **Flexible packages**
- **Multiple payment options**
- **Available across our whole machine range**

Contact your  
nearest BELL  
Customer  
Care Service  
Centre for  
more info



**FOLLOW US ON**



**E-mail: [bellparts@bellequipment.com](mailto:bellparts@bellequipment.com) • [www.bellequipment.com](http://www.bellequipment.com)**





**ITR AFRICA**

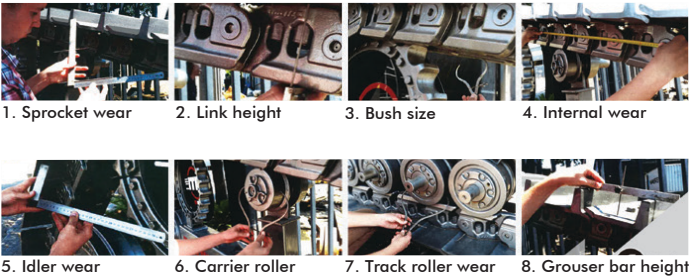
## UNDERCARRIAGE MEASURING & WORKSHOPS



### Undercarriage

The ITR undercarriage line includes chains, shoes, rollers, sprockets, idlers and segments manufactured within the group’s own production facilities. In addition to standard excavator and dozer applications, ITR undercarriage also covers asphalt road paving, drilling and logging machines. ITR’s flexible production and design expertise also allow for “tailor-made” products to suit any specialised application.

The ITR mini and compact undercarriage line also includes a strong selection of rubber tracks, bolt-on and clip-on rubber pads, rubber and polyutherane vulcanised shoes and city-pads (road liners).



1. Sprocket wear    2. Link height    3. Bush size    4. Internal wear  
5. Idler wear    6. Carrier roller    7. Track roller wear    8. Grouser bar height

### Undercarriage Measuring

ITR offers a complete undercarriage measuring service that provides a full analysis with recommendations, giving you the benefit of reducing cost per hour through preventative and scheduled maintenance.

Contact your nearest ITR branch today to schedule your appointment.

### Undercarriage Workshops

ITR offers Undercarriage Repair, Maintenance and Rebuild Services out of our Service Centres in South Africa and Zambia. Services include remove and refit shoes, turn pins and bushes, re-strip grouser shoes, rebuild idlers, fit new pins and bushes and trackframe repairs.



**Johannesburg**  
Tel: +27 (11) 614 0070  
[sales@itrafrica.com](mailto:sales@itrafrica.com)  
**Kathu**  
Tel: +27 (53) 723 2245  
[kathu@itrafrica.com](mailto:kathu@itrafrica.com)

**Cape Town**  
Tel: +27 (21) 905 7340  
[capetown@itrafrica.com](mailto:capetown@itrafrica.com)  
**Pinetown**  
Tel: +27 (31) 941 1133  
[pinetown@itrafrica.com](mailto:pinetown@itrafrica.com)

**Port Elizabeth**  
Tel: +27 (41) 451 2222  
[portelizabeth@itrafrica.com](mailto:portelizabeth@itrafrica.com)  
**Middelburg**  
Tel: +27 (13) 590 5614  
[middelburg@itrafrica.com](mailto:middelburg@itrafrica.com)

**East London**  
Tel: +27 (43) 748 3541  
[eastlondon@itrafrica.com](mailto:eastlondon@itrafrica.com)  
**Bloemfontein**  
Tel: +27 (51) 011 5620  
[bloemfontein@itrafrica.com](mailto:bloemfontein@itrafrica.com)

**Namibia**  
Tel: +264 (83) 331 5160  
[namibia@itrafrica.com](mailto:namibia@itrafrica.com)  
**Zambia**  
Tel: +260 (212) 213 867  
[zambia@itrafrica.com](mailto:zambia@itrafrica.com)



THE FIRST CHOICE EARTHMOVING SOLUTIONS PROVIDER IN SUB-SAHARAN AFRICA

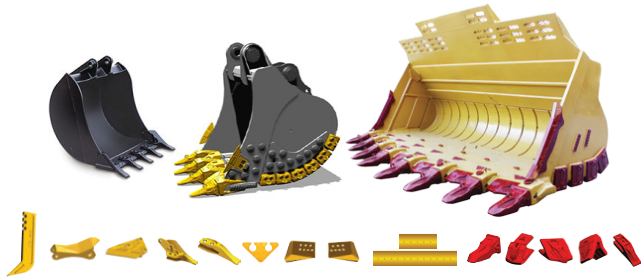
[www.itrafrica.com](http://www.itrafrica.com)

MANUFACTURER’S NAMES, NUMBERS & DESCRIPTIONS ARE USED FOR REFERENCE PURPOSES ONLY & IT IS NOT IMPLIED THAT ANY PART LISTED IS THE PRODUCT OF THE MANUFACTURERS





## GROUND ENGAGING TOOLS AND BUCKETS



The ITR GET line features on-going development of new product lines as well as high-performance, innovation-based, original solutions.

The ITR **UNIK** line has been designed for any and all applications where high penetration, impact resistance and increased wear life are essential. Unique features are an innovative and modern self-sharpening design, a reinforced pocket structure, increased side pin protection, high impact resistance and selected ITR steel composition, all ensuring excellent performance and an extended wear life.

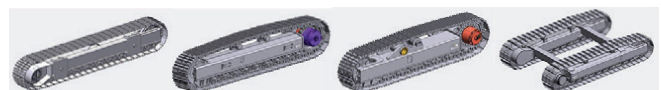
The **BYG Futura** Wear Technology Premium range is designed for mining machines up to 800 tons. The main features are its hammerless solutions that increase safety and reduce downtime, extra weight invested in reinforcing the key areas of the tooth where it has more exposure to wear, and its design with lateral and central ribs that facilitate the flow of material, significantly extending life while retaining its self-sharpening properties.

## OILS AND LUBRICANTS



ITR has a range of quality lubricants that deliver superior engine protection and performance, for machines used in construction, industrial and marine sectors. ITR lubricants are formulated with highly refined base oils, extreme pressure agents, anti-wear and anti-corrosive resistance additives for smooth operation.

## CRAWLER SYSTEMS AND TRACK FRAMES

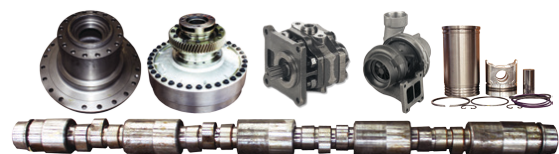


ITR offers Complete Undercarriage Crawler Track Solutions for many applications: Drill Rigs, Screen Plants, Crushing Plants, Underground Applications and more. The Crawler System is supplied complete, including Final Drives & Travel Motors.

**TRACK ONE** side frames are available for machines with a total weight between 500 kg and 200 tons.

These frames are typically used for crushers, drilling machines, conveyors, road pavers and milling machines.

## REPAIR PARTS



ITR has developed the widest range of repair parts available on the market for earth moving machines today. Engine parts such as crankshafts, connecting rods, pistons, cylinder heads, cylinder blocks, cylinder liners, engine valves. Hydraulic parts like gear pumps, piston pumps and hydraulic steering systems. Clutch parts, cooling system parts such as radiators, oil coolers and pumps. Torque converters and their relative components. Braking system parts such as calipers, discs and air compressors. Electric parts such as engine starters, alternators, switches, sensors, batteries and worklamps. Parts for transmissions, differential systems and final drives. Chassis parts such as equalizer bars, bogies and guards.



THE FIRST CHOICE EARTHMOVING SOLUTIONS PROVIDER IN SUB-SAHARAN AFRICA

[www.itrafrica.com](http://www.itrafrica.com)

MANUFACTURER'S NAMES, NUMBERS & DESCRIPTIONS ARE USED FOR REFERENCE PURPOSES ONLY & IT IS NOT IMPLIED THAT ANY PART LISTED IS THE PRODUCT OF THE MANUFACTURERS



# PARAMOUNT EQUIPMENT

We are level 1 B-BBEE company with a National Footprint and SADC reach

**We are a diversified company with extended offerings in the Manufacture and Supply of Machines for the mining and related industry.**

We have been trading since 2013. We offer Professional Engineering Services to industry. We strive for innovation and utilize the best material available in the market and offer the best fit solutions for our customers. Understanding our customer requirements is important. We source and provide them with best engineering solutions that are suitable for their operations. Paramount has recently partnered with the manufacturer, Revathi Equipment Limited (REL), an India based company to service the African continent. Paramount Equipment is the Authorized REL Dealer and Distributor

## INTRODUCING:



**AUTONOMOUS  
MINING THE  
WAY FORWARD**



REL (India) designs and builds a varied range of blast hole drills for the mining and construction industry, incepted in the year 1977 as Revathi CP Equipment limited the Indian Unit of Chicago Pneumatics USA. Since its inception REL has manufactured more than 2000 drills of different capacities, delivering quality holes drilled safely and accurately at the lowest cost.

Our commitment to continuous improvement and innovation drives our ongoing and growing African presence. Please feel free to contact us for more information about our industry-leading products and services.

## Your Partner in Mining Equipment Solutions

**Gauteng**  
32 Van Buuren Road  
Hans Merensky Office Park  
Bedfordview, JHB  
Tel: 010 007 3258

**Mpumalanga**  
2 Watt Street  
Industrial Area  
Middelburg  
Tel: 010 007 3109

**Northern Cape**  
Rietbok Street, Office 5  
NS&R Building, Kathu  
Tel: 082 902 6376 /  
072 849 6970

**Botswana**  
Plot 454  
Jwaneng  
Tel: 00 27 10 007 3258 /  
+267 71 968 840



Contact us today on [sales@paramounttracks.com](mailto:sales@paramounttracks.com) or visit us online at [www.paramounttracks.com](http://www.paramounttracks.com)

Proud partner of:







# Paramount Tracks

**Bedfordview**  
Head Office  
32 Van Buuren Rd  
Hans Merensky Office Park  
Tel: 010 007 3258

**Middelburg**  
2 Watt Street • Industrial Area  
Middelburg  
Mpumalanga  
Tel: 010 007 3109

**Northern Cape**  
Rietbok Street • Office 5  
NS&K Building • Kathu  
Tel: 082 902 6376  
Tel: 072 849 6970

**Botswana (Pty) Ltd**  
Plot 454  
Jwaneng  
Tel: 00 27 10 007 3258  
Tel: +267 71 968 840

**Postal Address: South Africa**  
P.O.Box 11735 • Aerorand  
1070 • South Africa

**Postal Address: Botswana**  
P.O.Box 2233 • Jwaneng  
Botswana



Email: [sales@paramounttracks.com](mailto:sales@paramounttracks.com)  
Website: [www.paramounttracks.com](http://www.paramounttracks.com)

**Paramount Tracks** is a diversified trading company that provides professional engineering services to the mining, plant and construction industries. We are a 100% black owned company and have presence in Johannesburg, Middelburg, Limpopo, Northern Cape and Botswana. We offer specialised services pertaining to the supply of all types of earthmoving undercarriage, GET, along with offering a repair solution for all bucket repairs, bowels, blade repairs, track frames etc.

We have the infrastructure to service large mining and construction companies. We supply a vast range of undercarriage that is suitable for all types of drill rigs and crawler equipment, along with wear parts that are suitable for most GET applications. We own a Track Workshop and Engineering Facility in Middelburg, Mpumalanga region & have developed strong relationships with the European undercarriage manufacturer ITM which is located in Italy. We currently service high end corporate clients in South Africa and have been appointed as the official ITM distributor for South Africa and Botswana through our Paramount Tracks Botswana entity. Paramount Tracks has been recognised as the official dealer of the Combi Wear Parts Ground Engaging Tools Range for South Africa who specialises in the manufacturing of this Swedish wear parts range and aims to offer our customers a premium product. We are the appointed Hardox Wearparts Centre in Middelburg, who is a member of SSAB and offer the following services:

- Cutting • Welding • Machining • Bending • Post-treatment • Perforation etc.

We aim to provide high productivity, along with low maintenance costs which is the core business for a Hardox Wearparts Centre.



## THE OEM ALTERNATIVE

### Our Vision

To be a regionally recognised professional engineering and technical services company dedicated to providing value added services to customers, from an engineering and supply of new undercarriage components perspective.. Paramount Tracks values are built on dedication, quality workmanship and excellent customer services that are based on sound engineering principles along with maintaining a safe and healthy working environment.

### Our Mission

We undertake to uphold the following principles:  
Quality parts and services  
Develop and empower the community we operate within  
To work to the highest quality standards possible  
Shrive for continuous improvement

**[www.paramounttracks.com](http://www.paramounttracks.com)**





● Seals ● Bearings ● Hydraulic Components

**We have moved to 504 Pretoria Road, Fairleads, Benoni**

**Tel: +27 11 420 1003 | Roger: +27 79 493 4486 | Damian: +27 79 897 9822**

**Seals:**

- Earth moving cylinder kits
- Hydraulic seals
- Pneumatic seals
- Oil seal
- O rings
- D rings
- Torric/duo cone/face seals

**Bearings:**

- Spherical plain bearings
- Spherical roller bearings
- Deep groove ball bearings
- Thrust bearings
- Taper roller bearing
- Needle bearings

**Plastic engineering:**

- Custom seal manufacturing
- Valve seats
- Bellows
- PTFE balls
- Pressure pads
- Sheeve wheels
- Rail slides

**Brands we stock:**



**Brands we stock:**



**Plastics we stock/machine:**

- Nylon
- PTFE
- Bronze impregnated PTFE
- Carbon impregnated PTFE
- Glass impregnated PTFE
- Tufnol
- Polyurethane
- All other engineering plastics

**Components/Miscellaneous:**

- Pins
- Bushes
- Cylinder bolts/washers
- Hydraulic glands
- Custom pattern making
- Castings

- LED work lights
- Component remanufacturing and repair
- Torque rod bushes
- Bellows
- Custom sourcing and supply of goods

**Through our network we can also offer a wide range of service exchange hydraulic cylinders**





# LIUGONG

FULL LINE. FULL SUPPORT. FULL SATISFACTION.



## Equipment and Spares



[www.liugong.co.za](http://www.liugong.co.za) - [admin.za@burgersafrica.com](mailto:admin.za@burgersafrica.com)

**BURGERS EQUIPMENT & SPARES SA**  
JOHANNESBURG - HEAD OFFICE  
80 POMONA ROAD  
011 979 3636

**CAPE TOWN**  
RUBICON CENTRE, SHIRAZ STR, UNIT 1 & 2  
SAXENBURG PARK, BLACKHEATH  
021 987 5666

**POLOKWANE**  
C/O VELDSPAAT & ZURICH STREET,  
B.A.T WAREHOUSE 4  
015 298 8696

**DOUGLAS**  
C/O LOCH ROPER & GIDDY STREET  
053 298 1108



## YES WE ARE OPEN

We form part of South Africa's essential services to keep our food industry and municipalities going. Keep safe and call if we can assist. 083 657 0522



# GFA

Gears for Africa

**WE MOVED TO BIGGER PREMISES**

**145 Lamp Road, Wadeville  
Germiston**

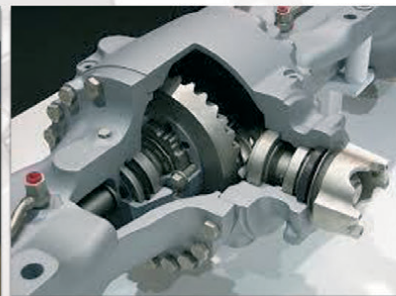
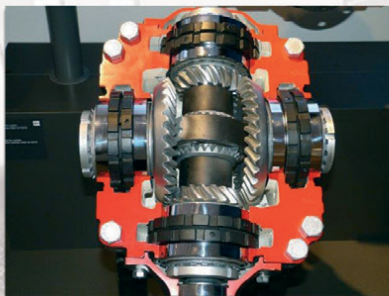
**OUR QUALITY COMPARES 100 % TO ANY OEM SPARE MANUFACTURES**

**MANUFACTURE OF SPIRAL BEVEL GEARS NOW AVAILABLE**



*Gears for Africa products include all types of gears, sprockets, splines and related product for industrial and heavy duty equipment and practically all applications related to power drive systems:*

- Bevel Gears
- Spur Gears
- Worm Gears
- Helical & Internal Helical Gears
- Crown Gears
- Internal & External Splines.



**CROWN WHEEL AND PINION, PLANETARY, SUN AND RING GEARS  
FINAL DRIVE GEARS, DIFF HOUSINGS SPIDER CROSS KITS, SPIRAL BEVEL GEARS**

**FOR THE MINING, RAIL, HEAVY EARTH MOVING, BUILDING,  
AND AGRICULTURAL INDUSTRIES**



Cape Town Branch  
Tel: 021 577 1030  
Fax: 021 577 1131

**083 657 0522 | [carl@gearsforafrica.co.za](mailto:carl@gearsforafrica.co.za)  
[www.gearsforafrica.co.za](http://www.gearsforafrica.co.za)**

JHB Branch  
Tel: 011 824 2017  
Fax: 011 420 3314



# VENDEL EQUIPMENT SALES (PTY) LTD

## T/A | ASSOCIATED EQUIPMENT

P O Box 3716, Honeydew, 2040  
Telephone: +27 (11) 801 4911/2  
Reg. no: 2013/000179/07  
[associated1@xnet.co.za](mailto:associated1@xnet.co.za)

**ANTON +27 (0)82 923 5397**  
**CHRIS +27 (0)83 626 5588**  
**JAAP +27 (0)82 892 1327**  
**LORAINÉ +27 (0)76 021 4344**

Plot 92 Indaba Lane-off Beyers Naude,  
Rietfontein, Roodepoort 2040  
Fax: +27 (11) 801 4914  
[associatedloraine@xnet.co.za](mailto:associatedloraine@xnet.co.za)

## WE ARE BUYERS FOR YOUR REDUNDANT EQUIPMENT



1 x 2007 Caterpillar 323D Excavator  
1 x 2014 Caterpillar 320D Excavator  
1 x 2008 Caterpillar 320D Excavator



4 x Caterpillar 140G Motor Graders  
with Rippers  
1 x Komatsu GD650 Grader  
with ripper



5 x New / Unused Case 770EX Magnum  
4x4 TLB's-86HP 2020 Models  
2 x New / Unused Manitou 844S 4x4 TLBS



2 x 2012 / 2007 Hamm GRW18 PTR'S  
1 x Cat PF-300C PTR- 2009  
1 x Ingersoll Rand - 27 Ton PTR



1 x F. A. W 10M³ Trucks -2016  
1 x Terex T30 6x6 Dump truck - 2004  
1 x 3 Axle Hendred Goosneck trailer



1 x Discharged Bin Trailer  
1 x Bell 2306D Tow Tractor 4x4  
1 x Tecon Grid Roller



4 X Etnyre K Chip Spreader's  
Refurbished, mechanical  
and electronic operated



1 x 2016 - 1 x Doosan DX62R-3  
Hours on clock: 1098  
1 x 2010 - Cat 302.5c Mini Excavator  
1 x 2013 Wacker Neuson 50Z3



1 x Caterpillar D6T Dozer with Ripper  
2010 Model Rebuild engine new undercarriage  
1 x Komatsu D65E-12 Dozer 2011 Model



2 x 2013 Cat 428F 4x4 TLB  
1 x 2014 Cat 428F 4x4 TLB  
1 x Bell 315 SJ 4x4 TLB



1 x 2013 Hamm 3411 Padfoot Roller  
2 x 2015/2008 Hamm 3411 SD Roller's  
2 x Hamm 3520 20 Ton SDR's 2011/2010  
1 x Dynapac R 3 Point Steel Rolle-13 Ton  
1 x Bomag BW219 Smooth Drum Roller



2 x Caterpillar 950H FEL 2013 models  
1 x Caterpillar 980H FEL - 2014  
1 x Cat 938K Loader - 2014  
2 x Sem 668C Front end loaders - 2014



3 x Benford TV1200 DDV Rollers  
1 x Bomag BW120AD-4 Roller  
1 x Ammann AV12-2 Double DDVR



2 x JCB 535-140 Telehandler 2015/14  
2 x JCB 535-125 Telehandlers 2016/14  
1 x JCB 540-140 Telehandlers 2016  
1 x JCB 540-170 Telehandler 2014



1 x Caterpillar RM 300 Reclaimer  
2010 Model - ONLY 4045 HRS



1 x Komatsu PC200-8 Excavator  
2013 new undercarriage  
1 x Komatsu PC200-8 Excavator 2012  
1 x Komatsu PC220-8 Excavator -2011



1 x JCB 456 ZX Front end Loader 2014  
1 x JCB 456 ZX Front end Loader 2013  
2 x Bell 1806E Front end loader's 2011



1 x Bell Kamaz 65222 - 9M³ - 6x6  
2018 Demo Models 3000 and 18000K  
1 x Man 25- 280BL Low Bed - 2009



2 x AWE Double Axle lighting plant  
2009/2008 Models



1 x Bomag BW212D-40 Smooth drum roller  
2014 Model  
2 x Bomag BW212D-40 SD Rollers

GPS CO-ORDINATES: **S26°3'56.343 - E37°52'37.453**

[www.associatedequipment.co.za](http://www.associatedequipment.co.za) / [www.vendelequipmentsales.co.za](http://www.vendelequipmentsales.co.za)





# AFRICA'S LEADING EARTHMOVING EQUIPMENT & PARTS DEALER

[www.blcplant.com](http://www.blcplant.com) ☎ +27 11 555 2000 ✉ [info@blcplant.com](mailto:info@blcplant.com)

PLANT

PARTS

RENTAL



**OVER 600  
MACHINES  
IN STOCK**



### HYDRAULIC EXCAVATORS

CAT 320D, 325D, 329D, 330D, 336D, 345D,  
349D, 365C, 374D/F, 385C, 390D/F



### DOZERS

CAT D6R, D6T, D7R, D8R, D9R/T, D10T, D11T



### RIGID DUMP TRUCKS

25 X CAT 777D, 5 X 777F



### MOTOR GRADERS

CAT 140G, 140H, 140K, 14H, 16G, 120H, 14M,  
16H, 16M



### ARTICULATED TRUCKS

BELL B40D, B35D



### ARTICULATED TRUCKS

CAT 725, 730, 740, 740B, 745C



### CAT EXCAVATOR

323D - 2017



### CAT GRADER

120H - 1998



### FRONT END LOADER

CAT 992 K



### TRACTOR LOADER BACKHOES

CAT 428F, 428F2, 426F, 450E



### COMPACTION ROLLERS

BOMAG BW212-3, BW213D, BW219-3  
CAT CS533, CP 533E, CS563E, CS76



### FRONT END LOADERS

CAT 950H, 950GC, 966H, 962H, 972H,  
980H, 988G, 992K

**LARGEST STOCK OF  
PARTS IN THE  
SOUTHERN HEMISPHERE**

Service exchange units available.

**6 MONTHS WARRANTY**  
on refurbished components.

View all our available  
stock on our website  
[www.blcplant.com](http://www.blcplant.com)





BLC Plant purchases earthmoving equipment for stock, rebuilds it as required in the fully equipped on-site workshops and then sells it to users in various industries. We focus on delivering products which meet customer specifications, offer buyers a viable alternative to new equipment and provide excellent after sales service and support.

## PLANT

### PLANT – STOCK READY TO GO



**CAT 277D SKID STEER**



**TADANO TR250M-6 RT CRANE**



**DOOSAN EXCAVATOR**



**KOMATSU  
HM400 35000L WATER BOWSER**



**120T LOW BED**



**CAT 120H MOTOR GRADER**



**CAT 966L FRONT END LOADER**



**CAT 140M MOTOR GRADER**

### TRUCKS – STOCK READY TO GO



**MERCEDES 3331 ROCK BIN**



**MERCEDES 3331 HEAVY DUTY BIN**



**MAN 26-280 10M3 TIPPER NEW**



**TATA 2528 10M3**



**MERCEDES 3335 10M3**



**NISSAN UD 330D 16000L WATER**



**MERCEDES 2628 CRANE 12 TON METER**



**MERCEDES 3340 CRANE 15 TON METER**

Call us now **+27 (0)11 555 2000** or visit **[www.blcplant.com](http://www.blcplant.com)** for our latest stock.





Largest stock of parts in the southern hemisphere. Service exchange units available. **6 Months warranty on refurbished components.**

[www.blcplant.com](http://www.blcplant.com)

+27 11 555 2000 

info@blcplant.com 

Corner Wynberg Road and 2nd Avenue, Kew 

## PARTS

### STRIPPED OVER 3000 CAT MACHINES FOR STOCK



**CATERPILLAR**  
Dozer Engines



**CATERPILLAR**  
Dozer Final Drives



**CATERPILLAR**  
Grader Transmissions



**CATERPILLAR**  
Loader Axles



**CATERPILLAR**  
Loader Transmissions



**CATERPILLAR**  
Grader Axles



**CATERPILLAR**  
Transfer Box



**CATERPILLAR**  
Off Highway Transmissions

Call us now +27 (0)11 555 2000 or visit [www.blcplant.com](http://www.blcplant.com) for our latest stock.





TJB  
Service Centre

Labour - R380,00 p/h

CAR SERVICES  
Minor & Major Services

OPENING SPECIAL!!!!

We know times are tough and we value your support, so our hourly rate is R380,00


Valid until 31 October 2020



CAR SERVICE

SERVICE GUARANTEE

Our qualified Toyota and Ford mechanic promises excellent workmanship and efficiency.



TRUCK SERVICES  
Minor & Major Services

BRAKES & TYRES  
Brakes & discs  
Wheel Alignment & balancing

AND MUCH MORE...  
ALL MODELS WELCOME

Get in touch • Rikus 066 273 3294 • Kelvin Commercial Park Unit 10, 107 Zuurfontein Road Spartan





**FIELD  
SERVICES  
NOW  
AVAILABLE**



**Primeplant (Pty) Ltd**  
Tel: 011 979 4853 Fax: 011 396 1653  
[www.primeplant.co.za](http://www.primeplant.co.za)



We specialize in the repair & maintenance of **CAT** TLB's



# JCB 3CX PARTS



C.T.C. PLANT COMPANY  
SINCE 1992



## WE BUY JCB'S

Complete engine rebuild parts, cylinder heads, crankshafts, pistons, gasket kits, transmission parts, axle and diff parts, axle hub parts, cab parts, cab glass, machine cables, hydraulic parts and pumps, pins and bushes, electrical parts & much more.

Transmissions 3 CX, Front & rear axles,  
Complete service exchange hubs  
Hydraulic cylinders for 3 CX



## SERVICE EXCHANGE COMPONENTS:

Saving you time, saving you money,  
reducing down time.

444 NT long blocks  
444 T long blocks  
Available.

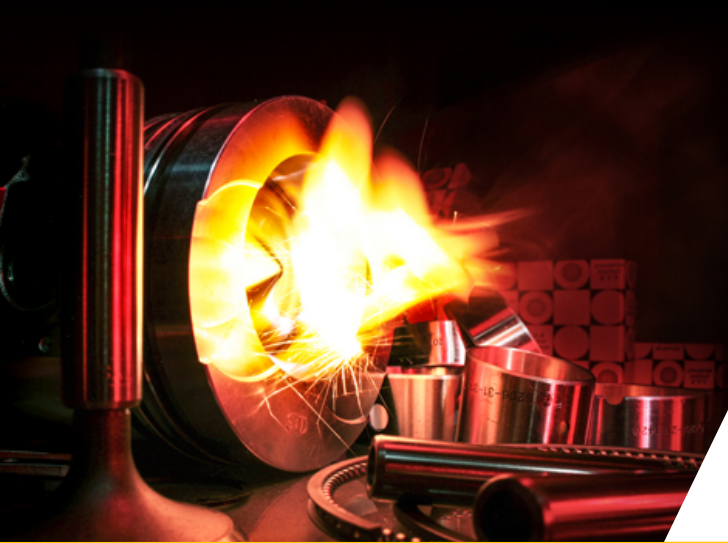
## FOR SUPERIOR QUALITY PARTS ON ALL MAJOR BRANDS

Cnr. Michigan & Manchester  
Streets, Airport Industria,  
Cape Town, South Africa

Mark Swanepoel: +27 82 825 6966  
Roy Heather: +27 61 421 9184  
[www.ctcplant.com](http://www.ctcplant.com)







**SHIN LI**  
**TRADING** ©



*We Specialise in  
Japanese & Korean  
Earthmoving Spares*

## ENGINE SPARES

Liner Kits, Gasket Kits, Valves & Guides,  
Water Pumps, Oil Pumps, Crank & Cam Shafts,  
Engine Bearings & Bushings



**Mitsubishi**  
**Komatsu**  
**Doosan**  
**Nissan**  
**Isuzu**  
**Hino**

## HYDRAULIC PARTS

### Kawasaki Pumps

New and Complete



### Final Drives

20 Ton Excavator  
Final Drive Parts  
& Complete Units



### Komatsu Gear Pumps

Transmission Pumps  
Steering Pumps  
Main Pumps



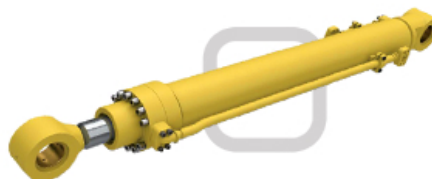
### Kawasaki Rotating Groups

K3V and K5V Series  
Inner Parts  
Rotating Groups  
Seal Kits



### Komatsu Cylinders

Complete Cylinders  
Seal Kits



**WWW.SHINLITRADING.CO.ZA**

#### Email:

sales@shinlitrading.co.za (Chris)  
sales2@shinlitrading.co.za (Wimpie)  
sales3@shinlitrading.co.za (Martin)  
sales4@shinlitrading.co.za  
sales5@shinlitrading.co.za (Steven)

#### Address:

67 High Road  
Bredell A/H  
Kempton Park

#### Tell:

011 396 1081  
011 552 5900 /1/2

#### Fax:

086 666 2537





# *Working hard, so you don't have to.*

**WWW.SHINLITRADING.CO.ZA**

## **UNDERCARRIAGE**

**Track Links**



**Sprockets**



**Idlers**



**Track & Carrier**



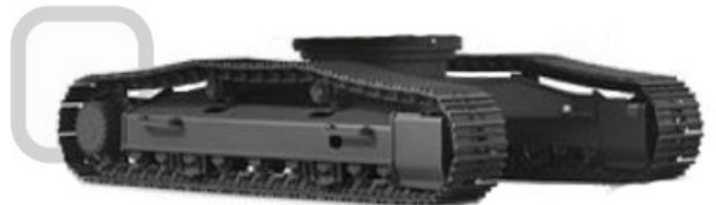
**Rollers**



**Track Plates**

**Bolts & Nuts**

**Genuine Hyundai  
20 Ton Track Frames**



# **FOR SALE !**

**Address:** 67 High Road  
Bredell A/H  
Kempton Park  
**Tell:** 011 396 1081  
011 552 5900 /1/2  
**Fax:** 086 666 2537

**Scan the QR Code  
to see our website:**



**SHIN LI  
TRADING** ©





**BOMAG BW212-3**  
Smooth drum Roller



**1 x HYUNDAI 300LC-9S**  
Excavator



**2 x KOMATSU D51EX-22**  
Dozer



**BELL/KATO HD1430R**  
8570 Hours



**LOWBED**  
Two axle trailer



**KOMATSU WA380-6**  
F.E.L.



Contact Stuart Mckenzie for more details:

Tel: 033 212 2181

Cell: 082 558 7901

Email: [sjm@mckenzieplant.co.za](mailto:sjm@mckenzieplant.co.za)

[www.mckenzieplanthire.co.za](http://www.mckenzieplanthire.co.za)



You can now find us on facebook, go to [www.facebook.com/mckenzieplanthire](http://www.facebook.com/mckenzieplanthire)





**THE ALTERNATIVE SUPPLIER FOR DOOSAN, HYUNDAI, VOLVO AND OTHER BRANDS OF EXCAVATOR PARTS AND COMPONENTS IN SOUTH AFRICA.**

\*All manufacturers names, numbers, symbols and pictures are for reference only. It does not imply that any of the parts are the product of these manufacturers.



## FINAL DRIVES IN STOCK NOW

CAT 320D, CAT 329D & CAT330D

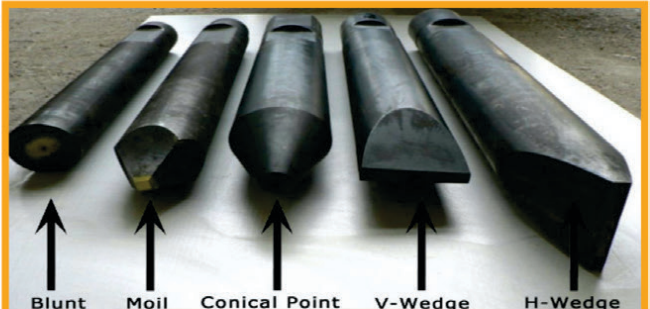
SUMITOMO SH200, SH210, SH300-3

BELL KATO HD800, HD820, HD1023

CASE CX210, CX240

DOOSAN, VOLVO & HYUNDAI

## BREAKER CHISELS



### AVAILABLE NOW

SUMITOMO

SH200, SH210, SH300-3

CASE

CX210, CX240

BELL KATO

HD800, HD820, HD1023

HITACHI, HYUNDAI,

DOOSAN & VOLVO

## SWING MOTORS & REDUCTIONS



TEL: +27(0)11 967 0055 | TEL: +27 (0)11 967 0060 | FAX: +27(0)86 606 4597 | [SALES@MIDPLANT.COM](mailto:SALES@MIDPLANT.COM)

ADDRESS: 273 3RD AVENUE, BREDELL, KEMPTON PARK | [WWW.MIDPLANT.COM](http://WWW.MIDPLANT.COM)







# RHINO

## Excavator Hammers cc

Reg. No. 2008/152815/21

SOLE DISTRIBUTORS FOR



IN AFRICA



**Rock Wheel  
Cutter**



**XCENTRIC  
RIPPER**



**DandA**

**WE ALSO HIRE:  
EXCAVATORS & TLB'S  
WITH THE ABOVE  
ATTACHMENTS**



# RHINO

## Earthmovers cc



**BREAKING FOR SPARES**

**MACHINE & PARTS LISTING** (PRICES ON APPLICATION)

- CAT 931C , CAT 330D
- VARIOUS 20 TONNE EXCAVATORS JS200, CAT320D ,CAT330D. (SOLD WITH OR WITHOUT PIPING)
- 14 000 ALUMINUM WATER TANK.

- JAW CRUSHER RUNNING ORDER
- KOMATSU PC400-6 AS A RUNNER OR FOR SPARES.
- 2 X JCB 3CX FOR SPARES.
- KOMATSU DOZER 375-5, 375-3 TRANSMISSION AND ENGINE IN GOOD CONDITION.

+27 74 922 2382 (Office Number) | Cell: 071 670 8707 | 082 887 8636  
[sales@rhinohammers.co.za](mailto:sales@rhinohammers.co.za) | [hire@phplant.co.za](mailto:hire@phplant.co.za) | [cjago@global.co.za](mailto:cjago@global.co.za)  
[www.rhinohammers.co.za](http://www.rhinohammers.co.za) | [www.phplant.co.za](http://www.phplant.co.za)



# WEICHAI

## PRODUCT SUPPORT AT ITS BEST



## RENTAL OPTIONS AVAILABLE



# FAW Q8 Oils



*A Caterpillar Brand*

14 Buwbes Rd, Sebenza

English: Barry - 072 399 9817

Afrikaans: Arno - 065 040 2839

Zulu: Sonto - 061 564 1163

[bm@semrsa.co.za](mailto:bm@semrsa.co.za)



# DOZER

EARTHMOVING



**CAT 789C  
FOR DISMANTLING**



**CAT 777F  
FOR DISMANTLING**



**CAT 777D  
FOR DISMANTLING**



**CAT 773F  
FOR DISMANTLING**



**CAT 773E  
FOR DISMANTLING**



**CAT 773D  
FOR DISMANTLING**



**CAT 769D  
FOR DISMANTLING**



**CAT 769C  
FOR DISMANTLING**



**CAT 725  
FOR DISMANTLING**



**CAT D11R  
FOR DISMANTLING**



**CAT 824G I  
FOR DISMANTLING**



**CAT 824G II  
FOR DISMANTLING**



**CAT 834H  
FOR DISMANTLING**



**CAT 988H  
FOR DISMANTLING**



**CAT 992G  
FOR DISMANTLING**



**LIEBHERR 9350  
FOR DISMANTLING**



**LIEBHERR 9350  
FOR DISMANTLING**



**KOMATSU HD785-5  
FOR DISMANTLING**



**CAT 992K FINAL DRIVE  
REMAN/EXCHANGE**



**CAT D11T TRACK FRAMES  
REMAN/EXCHANGE**





**DOZER**  
EARTHMOVING  
**CAT D10T TRACK FRAMES**  
REMAN/EXCHANGE



**DOZER**  
EARTHMOVING  
**LIEBHERR 9350 TRACK FRAMES**  
REMAN/EXCHANGE



**DOZER**  
EARTHMOVING  
**LIEBHERR 9350 CAR BODY**  
REMAN/EXCHANGE



**DOZER**  
EARTHMOVING  
**LIEBHERR 9350 BOOM**  
REMAN/EXCHANGE



**DOZER**  
EARTHMOVING  
**LIEBHERR 9350 STICK**  
REMAN/EXCHANGE



**DOZER**  
EARTHMOVING  
**LIEBHERR 9350 TOGGLE**  
REMAN/EXCHANGE



**DOZER**  
EARTHMOVING  
**LIEBHERR 9350 LINK**  
REMAN/EXCHANGE



**DOZER**  
EARTHMOVING  
**LIEBHERR 9350 IDLER**  
REMAN/EXCHANGE



**DOZER**  
EARTHMOVING  
**LIEBHERR 9350 PUMPS**  
REMAN/EXCHANGE



**DOZER**  
EARTHMOVING  
**LIEBHERR 9350 SWING DRIVE**  
REMAN/EXCHANGE



**DOZER**  
EARTHMOVING  
**LIEBHERR 9350 BUCKETS**



**DOZER**  
EARTHMOVING  
**LIEBHERR 9350 CABIN**  
REMAN/EXCHANGE



**DOZER**  
EARTHMOVING  
**CAT 789D/785D CABIN**  
REMAN/EXCHANGE



**DOZER**  
EARTHMOVING  
**CAT 777F/773F CABIN**  
REMAN/EXCHANGE



**DOZER**  
EARTHMOVING  
**CAT D11T/D10T CABIN**  
REMAN/EXCHANGE



**DOZER**  
EARTHMOVING  
**LIEBHERR 9350**  
FOR SALE



**DOZER**  
EARTHMOVING  
**CAT 824G I WHEEL DOZER**  
FOR SALE



**DOZER**  
EARTHMOVING  
**CAT 824G II WHEEL DOZER**  
FOR SALE



**DOZER**  
EARTHMOVING  
**CAT 834H**  
FOR SALE (IN PROCESS CURRENTLY)



**DOZER**  
EARTHMOVING  
**CAT 834K WHEEL DOZER**  
FOR SALE

T +27(0)11 452-1224 M +27(0)11 82 441-2895 E [info@dozer.co.za](mailto:info@dozer.co.za) W [www.dozer.co.za](http://www.dozer.co.za)



[www.instagram.com/dozerearth](https://www.instagram.com/dozerearth)



[www.facebook.com/dozerparts](https://www.facebook.com/dozerparts)



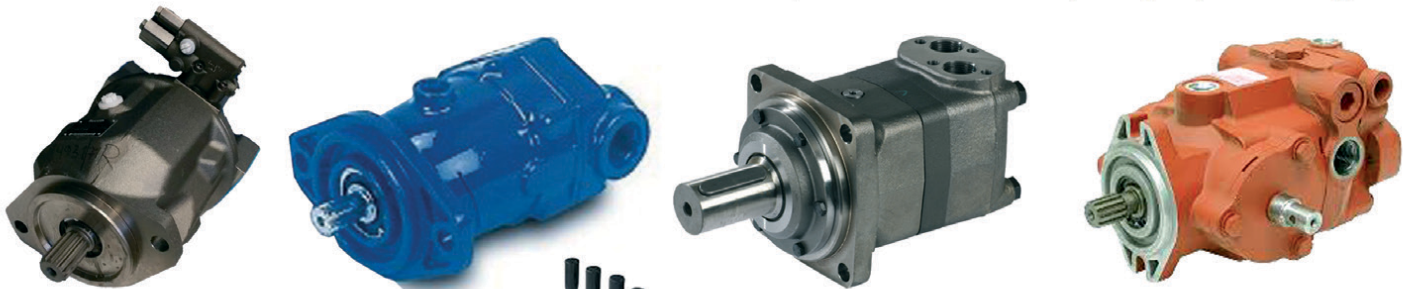


**KDH Hydraulics** specialize in the repair and supply of **Hydraulic pumps, Motors & Valve banks**

**KDH**  
**HYDRAULICS**

Tel: (011)762-9001/2  
Fax: 0867581303  
Mobile A/H: 071 678 3746  
Email: [ricus@kdhhydraulics.co.za](mailto:ricus@kdhhydraulics.co.za)

Cnr Quellerie St & Randfontein Rd, Roodepoort, Johannesburg, Gauteng



**EXCHANGE UNITS**

**KAWASAKI      REXROTH**

K3V 280 DT      A10V60  
K3V 180 DT      A20V60  
K3V 112 DT      A10V74  
K3V 280 SH      A10V71



LIEBHERR – A4VG71

**VARIOUS VOLVO ADT HYDRAULIC PUMPS**  
**VARIOUS SUNDSTRAND HYDROSTATIC PUMPS & MOTORS**



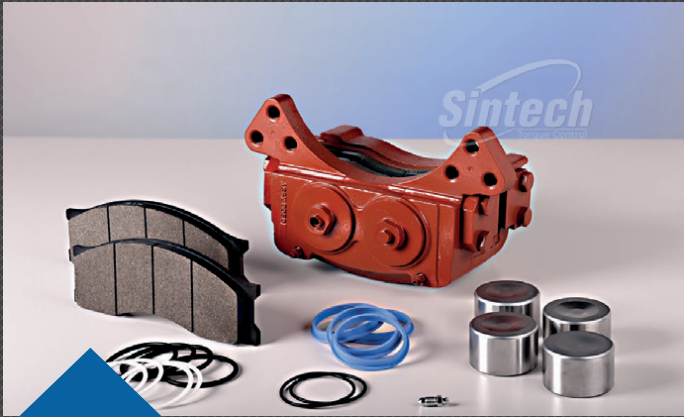
**Repairs on all of the following major brands**

- Atlas Copco
- Bell Equipment
- Caterpillar
- Liebherr
- Doosan
- Hitachi
- Komatsu
- Sumitomo
- Kawasaki
- Sandvik
- Bobcat
- Powerscreen
- Terex
- Finlay
- Aard Mining Equipment
- GHH
- Case
- ASA-Lift
- John-Deere
- Volvo

*We also supply Gear pumps and motors according to application specifications and requirements.*

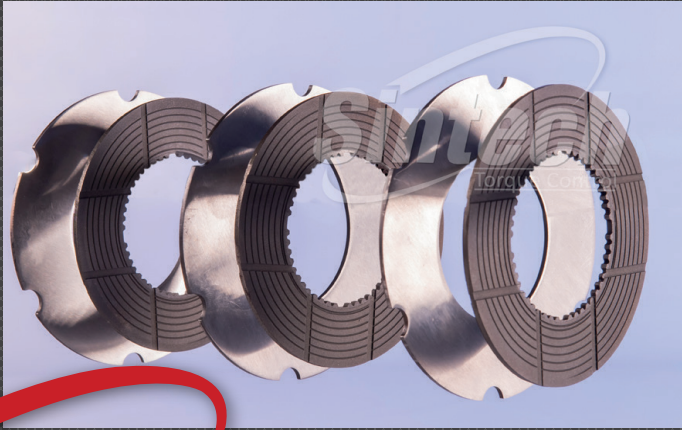
**[www.kdhhydraulics.co.za](http://www.kdhhydraulics.co.za)**





BELL  
SERVICE &  
PARK BRAKE

BELL  
TRANSMISSION  
& DIFF DISCS



**Sintech**

ORIGINAL  
EQUIPMENT  
SUPPLIER

[www.sintech.co.za](http://www.sintech.co.za)

+27 (0)11 823 2359





**MARSAY EQUIPMENT**  
QUARRY | MINING | CONSTRUCTION

**Marsay Equipment** specialises in the buying, refurbishment and selling of good used construction, mining, stone crushing and transport equipment.

We operate throughout southern Africa, mainly the SADC region.  
We are based in Johannesburg South Africa and have been in business for 44 years.

**TIM MARSAY +27 83 654 4248**  
**PATRICK MARSAY +27 79 187 7937**

[tim@marsayequip.co.za](mailto:tim@marsayequip.co.za)  
[www.marsay.co.za](http://www.marsay.co.za)

## 100 TPH CRUSHING PLANT



**100 TPH CRUSHING PLANT**  
**EXCELLENT CONDITION**



**12 X WINGET 400R**  
**CONCRETE MIXERS**  
**DIESEL OR ELECTRIC**





# MACHINES FOR SALE



**MERCEDES-BENZ ATEGO  
TIPPER TRUCK  
(2001 MODEL)  
R440 000 +VAT**



**MERCEDES-BENZ  
POWERLINER 2629  
(1985 MODEL)  
R 250 000 + VAT**



**LIEBHERR 538 LOADER  
2013 MODEL  
(AUTOMATIC GREASING  
SYSTEM AND L5 TYRES)  
R 425 000 + VAT**



**LIEBHERR R924B  
EXCAVATOR 27 TON  
2004 MODEL  
(NEW GROUSER SHOES )  
R 220 000 + VAT**



**BELL B20C DUMPER  
(Not Registered)  
R 420 000 + VAT**



## CONTACT

**Francois Gerber**

082 454 0934 | [charlesjnr@transand.net](mailto:charlesjnr@transand.net) | 044 695 0105



## GOOD USED EARTHMOVING PARTS AND EQUIPMENT

**STM**  
**MINING EQUIPMENT PTY(LTD)**

Tel: (011)894-6192 / (011)894-3377

Fax: (011)894 7914

[barney@stmmining.co.za](mailto:barney@stmmining.co.za)

[donovan@stmmining.co.za](mailto:donovan@stmmining.co.za)

Office Hrs: Mon-Fri 07h00-17h00



**STM Mining Equipment (PTY) LTD** was established in 2002 and has been supplying customers good second hand components and parts for earth moving machines in 2016 we started field service with technician's and recon components and repairing machines.

We supply goods to a wide range of industries such as construction, civil, plant hire, mining and farming industries and as far as Australia, America, Botswana, Zimbabwe and a lot of locally supplied customers to. We have been supplying good secondhand parts to the market since 2002.

### OUR PRODUCTS & SERVICES

We supply second hand machines and good used parts for most makes of Earthmoving Equipment ie: Cat, Komatsu.

We buy second hand machines to strip for components and parts, dead or alive to keep in stock for customers. We have a repair shop where we do components and Repair machines for Customers.

**Engines | Engine Blocks | Sub Assemblies  
Crankshafts | Cylinder heads | Engine Parts  
Undercarriage | Frames & Body | Components  
Portable Diesel Compressors**

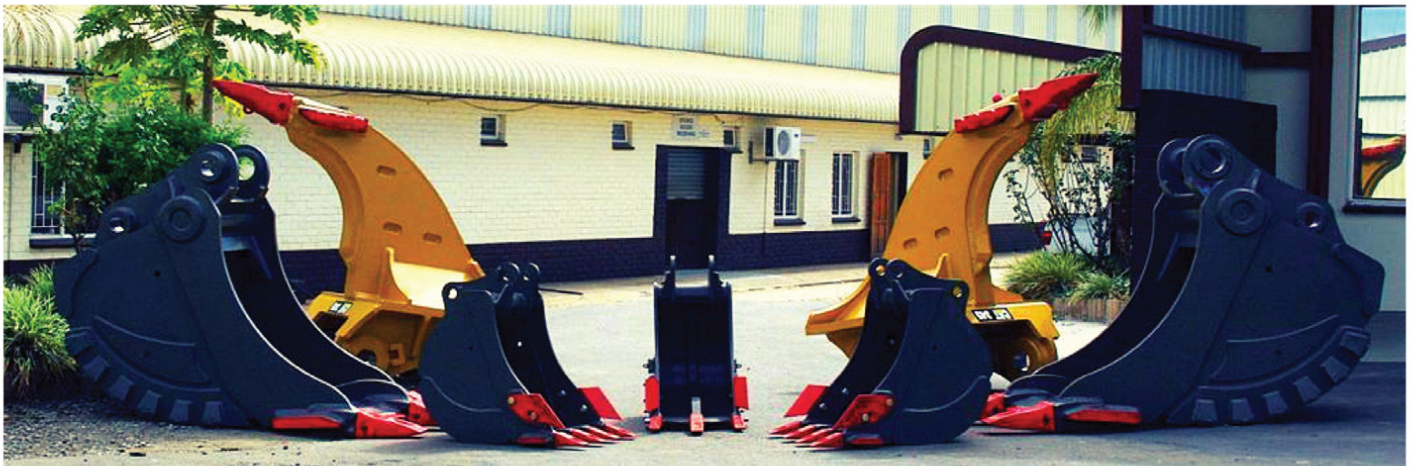
PO Box 6456, Dunswart 1508, 40 Michelson RD. Westwood, Boksburg

**[www.stmmining.co.za](http://www.stmmining.co.za)**





# MACHINERY CONTRACTORS



Where other companies stop, Machinery Contractors only starts.



TEL: 012 250 3534    [INFO@MACHINERYCONTRACTORS.CO.ZA](mailto:INFO@MACHINERYCONTRACTORS.CO.ZA)  
[WWW.MACHINERYCONTRACTORS.CO.ZA](http://WWW.MACHINERYCONTRACTORS.CO.ZA)





# POWERTRANS

THE REBUILD CENTRE

Tel: 032 459 5700 • 0861 POWERTRANS  
Ricky 071 706 8759 • Raven 082 555 4925  
info@powertrans.co.za • www.powertrans.co.za




\*All manufacturers names, numbers, symbols and pictures are for reference only. It does not imply that any of the parts are the product of these manufacturers.

**SAUER DANFOSS**  
PV27 COMPLETE PUMP AVAILABLE



**ALL OTHER PV SERIES  
ARE AVAILABLE ON REQUEST**

**BELL**  
Bell Logger and Caneloader Parts



**CUMMINS**  
BRAND NEW Cummins QSB 6.7



PARTS FROM MAJOR SUPPLIERS SUITABLE FOR  
DOZERS, EXCAVATORS, FRONT END LOADERS  
AND ALL OTHER EARTHMOVING EQUIPMENT

**ARE YOU HASSLING FOR EXCAVATOR SPARES,  
WE CAN HELP SOURCE PARTS **FOR YOU****

**LEAD TIME 4-6 WEEKS FROM PAYMENT**  
**WE BOAST THE BEST DYNO TEST EQUIPMENT FOR ENGINES  
AND TRANSMISSIONS IN THE INDUSTRY.**

**A VISIT TO OUR FACTORY IS WELCOME ANYTIME**  
WE ARE AUTHORISED AGENTS FOR  
(ALLISON TRANSMISSION, TELMA RETARDERS, BOSCH FUEL INJECTION , KIRLOSKR DIESEL ENGINES).



**INJECTOR PUMP AND  
INJECTORS**



WE SUPPLY BRAND NEW AIRCOOLED  
ENGINES FOR BELL EQUIPMENT LOADER,  
WE ALSO HAVE A LARGE INVENTORY  
OF REBUILT EXCHANGED UNITS



**REXROTH PUMP  
AND EATON PUMPS**



**FULL RANGE OF ALLISON  
TRANSMISSION SERVICE  
EXCHANGE UNITS IN STOCK**



# YANMAR

WORLD RENOWN COMPACT EXCAVATORS

Models available  
from 1 to 10 tons

- Powered by Yanmar
- Built by Yanmar
- Zero Tail Swing
- Hydraulic Quick Coupler
- PTO fitted standard
- Steel or rubber tracks
- Cab or ROPS canopy
- Airconditioner option
- Cylinder protection
- Dozer blade & boom swing
- Light & travel alarm
- 15 YRS IN SOUTH AFRICA

Western Cape  
**FORCE 8 CC (Importers)**  
Phone 021 535 1117  
[www.force8.co.za](http://www.force8.co.za)

Gauteng  
**RAPTOR PLANT SALES (PTY) LTD**  
Phone Clive on 073 500 3761  
[www.raptorplantsales.co.za](http://www.raptorplantsales.co.za)

Eastern Cape  
**CHALK AIR CC**  
Phone 043 743 8855  
Please speak to Zane

Mpumalanga  
**RUDAMANS (PTY) LTD**  
Phone 013 753 3631  
[www.rudamans.co.za](http://www.rudamans.co.za)

West Coast  
**WESKUS MEGANISASIE CC**  
Phone 027 213 3277  
Kobus 081 415 4409

Breede River Valley  
**LANGEBERG GRONDWERKE CC**  
Phone 023 626 2563  
Danie 084 491 0916

[www.yanmar.co.za](http://www.yanmar.co.za)





# NDUNA SPARES

YOUR ANSWER TO ALL  
EARTH MOVING EQUIPMENT & SPARES

WE SPECIALIZE IN 320/330/374 & 390 COMPONENTS & SPARES  
SERVICE EXCHANGE & OUTRIGHT

**KOMATSU CYLINDERS | CAT CYLINDERS | VOLVO CYLINDERS | BELL CYLINDERS**  
**WE KEEP STOCK ON A WIDE VARIETY OF G.E.T & BUCKETS**  
**374/390/966/TLB/EC700/HITACHI 870**



<b>CAT 740B TRANSMISSIONS TRANSFER BOX FINAL DRIVES STRUDS HOIST PUMPS BRAKE PUMPS AND MANY MORE</b>	<b>BELL B40D TRANSMISSIONS CONTROLLERS DIFFS TRANSFER BOX</b>	<b>EC210 FINAL DRIVES PC 300 FINAL DRIVES</b>
--	---	---

**WE ALSO DO PLANT HIRE**



**FOR A QUOTE PLEASE CONTACT US ON 013 230 3852 / 071 352 6572**



**OR COME & VISIT US AT**  
**337 BERGSEING STREET,**  
**STEELPOORT**

**ONE OF OUR FRIENDLY**  
**CONSULTANTS**  
**WILL BE HAPPY TO**  
**ASSIST YOU**





TRADINGINTERNATIONAL

[www.bmhplant.com](http://www.bmhplant.com)

082 780 0084 | 021 903 2667

[bradley@bmhtradinginternational.com](mailto:bradley@bmhtradinginternational.com)



**2013 HITACHI ZX470 LCR-5G**  
12 600 HRS



**2011 HITACHI ZX670 LCR-3**  
20 000 HRS



**2017 ZX 870 LCR-5G**  
16 500 HRS



**2013 HITACHI ZX330LC-5G**  
7 000 HRS



**2013 Hitachi ZX210W-3**  
6 700 HRS



**2017 KUBOTA U50-5**  
300 HRS



**2018 HAMMER CH 400 METAL SHEAR**  
8 - 12 TON MACHINE



**2020 HAMMER CONCRETE PULVERIZOR**  
22 - 30 TON MACHINE



**2020 HAMMER FX 2200**  
22 - 30 TON MACHINE



NOW AVAILABLE FROM



**INTERSTATE  
McBEE**



**CEP**  
Capital Equipment Parts



**REMANUFACTURED  
INJECTORS FOR**

**CAT<sup>®</sup> 3500  
SERIES ENGINES**

**100% BRAND NEW NOZZLES**

- ◆ FOR PEAK PERFORMANCE
- ◆ LOWER EMISSIONS
- ◆ BETTER FUEL ECONOMY

**TRIM FILE CD INCLUDED**

- ◆ FOR BALANCED INJECTORS
- ◆ FINE-TUNED ENGINE

**Capital Equipment Parts**

Tel: +27 11 568 4215

[www.capiparts.co.za](http://www.capiparts.co.za)

Email: [info@capiparts.co.za](mailto:info@capiparts.co.za)



**Interstate-McBee**

Tel: 216-881-0015

[www.interstate-mcbee.com](http://www.interstate-mcbee.com)

[sales@interstate-mcbee.com](mailto:sales@interstate-mcbee.com)




©Cat is a registered trademark of Caterpillar, Inc. and does not imply that the item/s above are a product of said manufacturer.



**CEP**  
Capital Equipment Parts

Your Best source for  
affordable genuine OEM surplus,  
OES and aftermarket replacement  
**CAT®** and **CATERPILLAR®** parts.



 **Euroricambi**

 **INTERSTATE-McBEE**

**BBBEE  
LEVEL  
2**

**Mining Machine Parts Specialists**

PARTS YOU CAN TRUST

**TRUST**

011 568 4215 | [info@capiparts.co.za](mailto:info@capiparts.co.za)

[www.capiparts.co.za](http://www.capiparts.co.za)

  
**BLACK CAT**  
WEAR PARTS

 **SEARS  
SEATING**  
WORK HARD. WORK COMFORTABLY.

 **Euroricambi**

 **INTERSTATE-McBEE**

  
**BLACK CAT**  
WEAR PARTS

 **MODENA  
PARTS**





**Grind Right Engineering  
& Services (Pty) Ltd**



**Grind Right Site**  
9 Newton Street  
Middelburg  
1050  
Tel: 066-108 7439

**Grind Right Engineering  
& Services**  
16 Watt Street  
Middelburg, 1050  
Tel: 013-246 2308

[www.grindright.co.za](http://www.grindright.co.za) [grindright@gmail.com](mailto:grindright@gmail.com)

**Grind Right Engineering** was established in 2005. We are situated in Middelburg, Mpumalanga and specialises in Precision Machining, CNC Machining, Fabrication & Site Installation, Core Drilling.

On-site Line Boring as well as the manufacturing and re-conditioning of: # Ferrous and Non-Ferrous Bushes and Liners, # Rolls, wheels and shafts, # Hardened rolls, wheels and shafts, # Buckets, sticks & booms, # Hardened pins and bushes for all Earthmoving Equipment. Site crews available for Turn Key Projects, Maintenance, Erectionsm Fabrications, Specialised Welding and Surveys

We provide the best engineering services to mining, construction and plant groups. We do newly build / repairs and relining on all earthmoving blades, bowls, undercarriage and track frames.

Upon all that we also assist with condition monitoring on the wear of all liner packs.



# INDUSTRIAL PLANT SOLUTIONS

## For all your...

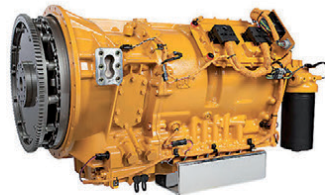


### ENGINES



3306DIT good used runner complete  
C7 recon short block  
3126 mechanical-good runner  
C15 longblock-980H  
3054C recon short block - 424d appl.  
D8R 20R4277 core recon  
C15-shortblock -freightliner  
C4.4 tested with warranty

### TRANSMISSION



926E Trans / D4D Trans  
D3C Trans / D8R Trans  
140G Trans  
  
D10R Converter / D8T Converter  
950E Converter / D8R Converter

### FINAL DRIVES



D8R Recon  
D6R Recon  
Cat 330B Inspected  
Cat330D Inspected  
Cat 320D2 Inspected  
Robex 180/210 like new

### PUMPS



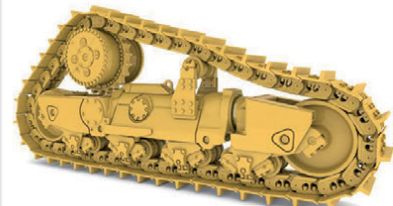
988F All pumps  
D8R Diff Steer pump, D8N Tran,  
C6.4Fuel, D8N Diff, Zaxis300.3  
Hydraulic pump, 330B

### BUCKETS



424D Rear bucket, 424D Front  
bucket, 928F, 920, PC200-7 Bucket,  
320B, 320C, 320C, 320B, 330B,

### MISCELLANEOUS



C4.4 parts  
D6R transmission ecm  
3054e ecm  
C7 radiator group new  
D4G&D5G cooler new  
988H pinion new  
QX head,block,crank

**New, used and reconditioned components - all makes.  
If it's from your machine, we'll find a replacement!!**

### Contact Us:

✉: [sales@ipsglobal.net](mailto:sales@ipsglobal.net)

f: [facebook.com/IndustrialPlantSolutions](https://facebook.com/IndustrialPlantSolutions)



**WhatsApp Message**  
**+27 (0)82 405 3494**

**Inspections & Assessments Also Done**



# EMS

Earthmoving Machine Sales



**Jason Ward**  
+27 83 412 1077  
[jason@sa-ems.co.za](mailto:jason@sa-ems.co.za)

**Mark**  
+27 82 907 9081  
Tel: +27 31 777 1025



**5 X BOBCATS**  
**S130 AND S150**  
- +\_5000 HOURS



**1 X CAT 320D**  
2012 MODEL - 11000 HOURS



**1 X 2010 CAT 416E**  
12 000 HOURS



**1 X 2003 CAT 416D**  
11 000 HOURS



# EMS

Earthmoving Machine Sales



**Jason Ward**  
+27 83 412 1077  
[jason@sa-ems.co.za](mailto:jason@sa-ems.co.za)

**Mark**  
+27 82 907 9081  
Tel: +27 31 777 1025



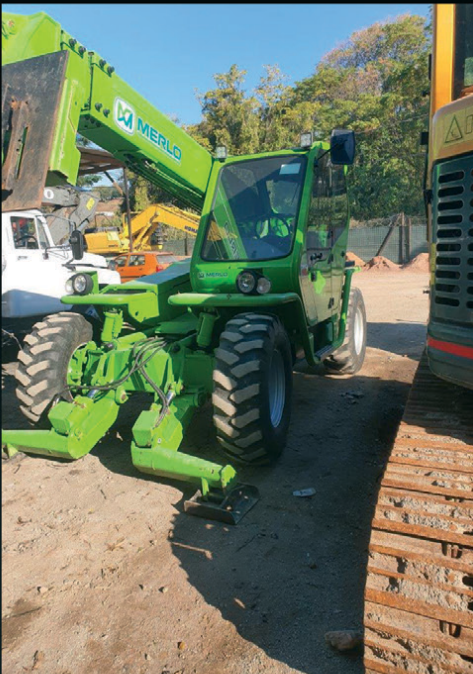
**1 X 2017 CAT 428F**  
2400 HOURS



**1 X CAT 320D**  
2009 MODEL - 8700 HOURS



**1 X KOMATSU PC300**  
8300 HOURS - 2012 MODEL



**1 X MERLO TELEHANDLER**  
RK35.13 2005 MODEL - 5000 HOURS



**1 X MANITOU TELEHANDLER**  
MT1840 - 6000 HOURS



**1 X KOMATSU PC220**  
6200 HOURS - 2014 MODEL



**1 X BOBCAT S650**  
2014 MODEL - 4000 HOURS



# GRAHAM'S PLANT REPAIRS

**EXPERIENCED ENGINE REBUILDER**



TANDUIM CHAIN  
MASTER LINKS  
for BELL GRADER  
EQUIPMENT 770G  
PRICE R7000-00 Each  
Brand New Genuine  
BELL EQUIPMENT PARTS

**ENGINES BUILT  
TO ALL SPECIFICATIONS FROM  
4CYL - 20V MTU'S 8000 SERIES  
QUOTE ON LABOUR  
GUARANTEE ON LABOUR ONLY**



MODEL TYPE 2645 K 011  
DELP C-00 LJBB03201A  
PERKINS  
R12 000-00 +  
6 MONTH WARRANTY

**GRAHAM GOLDSWAIN - 067 237 9119**  
goldswain9@gmail.com / Tel: 031 337 4743

## **FILTER CENTRE**

**Quality Lubricants  
NOW IN STOCK**

*Leaders in Heavy-Duty Filtration*



**AGRICULTURE**



**Klenz**  
Pure Protection

[www.filtercentre.com](http://www.filtercentre.com)  
[info@filtercentre.com](mailto:info@filtercentre.com)  
031 700 9074







## Goscor Earthmoving Equipment delivers two SANY SY335C excavators to Wearne Quarries of KZN

Two SANY SY335C medium excavators from Goscor Earthmoving Equipment have been delivered successfully to Wearne Quarries of KwaZulu-Natal, reports Operations Manager Murray Leith. The aggregate producer mainly supplies crushed stone for cement manufacture and will use the excavators for hard-rock excavation and loading articulated dump trucks (ADTs).

“The reason for selecting the SANY SY335C for this arduous application is not only that it is a particularly tough and robust excavator, but our analysis revealed it is the best option to meet the required production output and also deliver the lowest cost per ton,” explains Leith.

No modifications were required on these excavators, which are equipped with rock buckets. “We now offer a fully automatic greasing system as standard to assist with maintenance and thereby extend the lifetime of the machines,” adds Leith.

The machines were also sold with a 36-month/8000 hour warranty, which is an extension of the standard 18-month/3000 hour warranty. Included is a full service plan that will see the machines serviced at regular 250 hour intervals. In addition, Goscor Finance assisted Wearne Quarries in acquiring the equipment, thereby supplying the customer with a complete solution. The brand-new excavators were sourced directly from the factory in China.

Upon arriving at Durban harbour, they were immediately transported to Wearne Quarries, arriving on-site in late September. The Durban branch of Goscor Earthmoving Equipment assisted with the handover, and providing toolboxes and operator training as well.

“We have established a good business relationship with the client over the past year and a half due to our commitment and aftermarket support,” notes Leith. A prominent aggregate producer in the region, Leith is confident of repeat business from Wearne Quarries in the future.

The SANY SY335C medium excavator features an auto deceleration system that reduces fuel consumption by 5% to 10%. When an operation stops for 3.5 seconds, the engine speed drops automatically to idle level, and maintains this idling state. The strengthened structure makes it an efficient and robust machine for a range of applications. The dual-pump, dual-circuit constant power control system means that the Isuzu engine outputs a continuously strong operating force.

### Goscor Group Contact / Madel Dalla Pria

#### Marketing Manager

Phone: (011) 450 2231

Email: [mdpria@goscor.co.za](mailto:mdpria@goscor.co.za)

Web: [www.goscor.co.za](http://www.goscor.co.za)



## New TADANO rough terrain crane on SA soil

**In September, Babcock delivered the first brand-new TADANO GR-700EX-4 Rough Terrain Crane to a long-standing mining customer. The 70-tonne hydraulic rough terrain crane is the first one to arrive in South Africa, and one of the first to be sold world-wide.**

Featuring cutting-edge technology and hydraulics, and smart controls for operator ease, the fourth-generation TADANO GR-700EX is exceptionally well suited for plant maintenance in mining and construction applications where manoeuvrability and access to narrow spaces is essential. Sales representative for TADANO at Babcock, Claude Delport, says that the TADANO brand is well established in South Africa owing to the quality and longevity of the products, availability of spare parts, and excellent resale value. Manufactured by TADANO at their state-of-the-art facilities in Takamatsu, Japan, the GR-700EX-4 maintains the outstanding quality and reliability the brand is renowned for, while remaining well priced within a competitive market. Delport says repairs are easy to carry out and servicing is economical, making the TADANO range of rough terrain cranes a cost-effective long-term solution for any customer.

**Some of the new features on the GR-700EX-4 that set it apart from its predecessors include:**

- An upgraded cab with digital displays and touch screens
- Automatic speed reduction and slow stop function on boom elevation and slewing
- A 20° tilt cab for improved operator comfort and visibility
- A TADANO Automatic Moment Limiter (AML-E2) system that monitors outrigger extended lengths and automatically programmes the corresponding rated lifting capacities table.

“The Tadano AML-E2 system with the outrigger monitoring feature and smart chart system is a particularly useful tool as it automatically calculates the machine’s lifting capacity and stability even if the four outriggers are extended at different lengths. This ensures that the lifting capacity is increased in safer areas and adjusted accordingly in more confined spaces,” Delport says.

Delport says that the range of reliable TADANO cranes available from Babcock are popular across the continent, with some customers operating the same machines for over 35 years.

“Our customers are extremely happy with the quality and longevity provided by TADANO, as well as the long-term investment opportunities the machines afford.”

The new rough terrain cranes are available in models with lifting capabilities from 13 to 145 tonnes, while TADANO’S all-terrain cranes have lifting capabilities ranging from 40 to 400 tonnes.

Additionally, there is a range of telescopic crawler cranes combining innovative technology with measurable results for heavy duty requirements on tough work sites; and a selection of TADANO truck-mounted cranes combining outstanding mobility with flexibility and ease-of-use, ideal for small, medium and large construction or industrial project needs.

TADANO is recognised as a world leader in the manufacturing of mobile cranes and has also recently acquired Demag Mobile Cranes, further enhancing the brand and range of products available from TADANO. Babcock has been the exclusive distributor of TADANO products in South Africa since 2009 and provides support and sales to customers across southern Africa.







## John Deere Africa Middle East pays tribute to farmers on National Farmers Day

**October 12, 2020- Africa.** As some countries prepare to celebrate National Farmers Day, John Deere Africa Middle East (AME), would like to thank all farmers ; the many men, women, and families who plow, sow, feed, harvest and who work tirelessly year round to contribute to food and resource sustainability for the billions in Africa and the Middle East.

“Thank you to all our farmers for being an inspiration to us all,” says Stephan Nel, Divisional Sales Manager at John Deere.

“Those of us who enjoy the fruits of their labour seldom see the commitment, dedication, long hours, passion and resilience that is needed to succeed in farming. We thank all who farm or support farmers in any way.”

Farmers Day, originally referred to as Old Farmer’s Day, is celebrated each year to recognize the hard work, dedication, and overall contribution to the economy while promoting awareness and importance of farmers worldwide. John Deere AME resonates with the importance of National Farmers Day and believes that every day, week, month, and year, all farmers should be celebrated and recognized for their commitment, dedication, long hours, community involvement, passion and resilient spirit. John Deere remains dedicated to providing support through our committed channel network and transferring expertise to all farmers, whether small or large, in order to revolutionise agriculture in Africa and the Middle East and in celebration of National Farmers Day internationally, John Deere wishes to highlight the many valuable resources available to those in the agricultural industry.

While remaining at the forefront of the ever-growing digital era and technological advances, John Deere has developed a “library” of resources for farmers : from podcasts to talk shows, this leader in agriculture strives to remain a trusted resource.

- **Virtual Showroom** : Launched in September 2020, the unique Africa Showroom is a website that showcases the latest in John Deere products using cutting-edge virtual reality (VR) and 3D technology. It was built for farmers who would like to view equipment without physical limitations, or who, due to health or distance, cannot visit their local dealership
- **Digital Talk Show** : The very popular agricultural talk show, Tech Terrain , focuses on the agricultural value chain in Africa and is a platform where expertise is shared by various industry role players.
- **Podcast** : Boerpot/AgPod Podcast Series aims to inspire and create conversations in the agricultural landscape.
- **News Journal** : The John Deere Journal serves as a valuable portal for newsworthy highlights, unique stories, interactive experiences, news and opportunities within agriculture.
- **Videos** : The John Deere Africa Middle East YouTube Channel seeks to provide insight and allows farmers to watch product videos, helpful tips and advice, promos and other John Deere content which is easily accessible from mobile phones.
- **App** : A variety of apps designed to help farmers increase the performance and productivity of their equipment.
- **Training** : John Deere has a comprehensive training library available for farmers to use, including manuals and workbooks to support their success in farming and agriculture.
- **Resources** : Other valuable resources to mention a few, include their breakthrough in technology with their JDlink telematics device and mobile app, the, Operations Centre, Tools Integration as well as their SMART Campaign, Green Revolution Campaign and Parts Catalogue , these all form part of the many innovative platforms John Deere utilises to remain at the reach of its customers to improve service, communication and increase productivity.

**John Deere AME** continues to invest in digital platforms to proactively reach its customers, no matter where they are based.



## Emesent cements position in the mine planning eco-system with Maptek partnership

**BRISBANE, Australia (October 12th, 2020) - A new alliance with Maptek, a global developer of mining hardware and software, will boost Emesent's ability to deliver unprecedented insights to the resources sector.**

A data analytics and drone autonomy spin-out from the Commonwealth Scientific and Industrial Research Organisation (CSIRO), Australia's national science research agency, Emesent was launched in November 2018. In less than two years, the start-up has grown into a mid-sized global organisation with more than 100 customers across 25 countries. Users of its autonomous drone technology include BHP and Glencore.

This new partnership with Maptek will see the two companies work together to integrate their solutions and collaboratively promote their offerings. The alliance will make it easier for mining companies to adopt new data capture technology by leveraging their existing surveying capability.

Emesent's award-winning Hovermap mobile scanning unit uses advanced algorithms to provide accurate localisation and navigation, without resort to GPS technology. This feature makes it well suited for use in remote and underground environments where capturing high resolution data manually can be difficult and dangerous.

In recent months, Emesent has forged a series of alliances with other specialist suppliers of technology and services. It is a preferred partner of the leading commercial drone manufacturer DJI and collaboration between the two companies has enabled Emesent to pilot drones into highly challenging underground locations around the globe.

Emesent CEO Stefan Hrabar said close relationships between pioneering vendors were leading to substantial productivity, efficiency and safety gains for customers across the mining sector.

"As a result of the COVID crisis, we're seeing increased interest from mining companies across the globe in autonomous technologies, such as Hovermap, which enable a range of field tasks to be carried out remotely," Dr Hrabar said.

"Partnering with other technology providers in the vanguard is helping us move closer towards our vision of a digitally driven mining eco-system. Our technical team relishes the opportunity to collaborate with fellow developers who are dedicated to helping mining companies operate faster, smarter and more safely.

Maptek Global Product Strategy Manager Jason Richards said, 'Mine operations commit significant effort to the capture and measurement of data and this alliance enables access to the best and most efficient industry tools for extracting full value'.



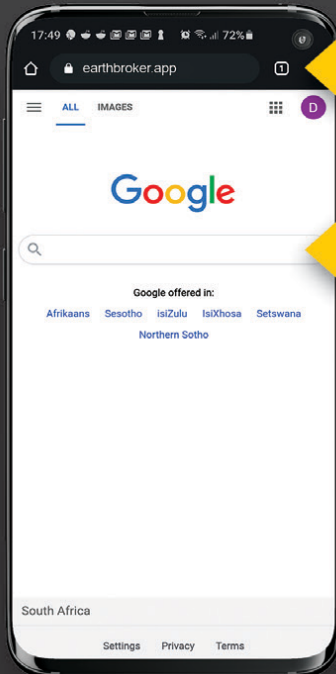


# earthbroker<sup>publication</sup>

Earthbroker has launched an app allowing you access to our Quick reference & our digital magazine! See below on how you can download it or use the link: <https://earthbroker.app>

## How to download our app

FREE FOR ADVERTISERS | APP FOR MOBILE USE ONLY



✓ Enter 'earthbroker.app' here

1 Open Google / Safari on your mobile phone.

✗ Not in search

Access to our **Quick Reference** and our latest eMag at a push of a button

**FREE DOWNLOAD**

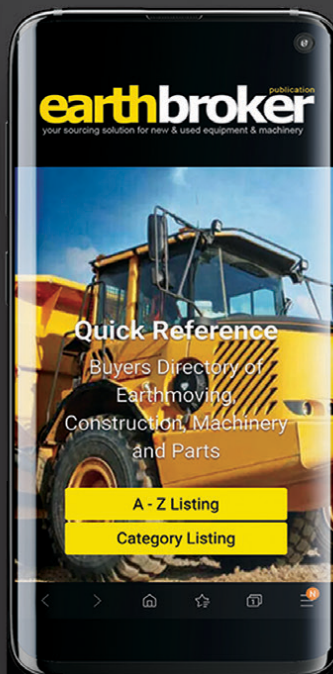
2 Follow prompts to add to home screen and allow notifications if you would like.

Now follow the instructions below on how to use our app once you have saved a shortcut on the home screen.



**STEP 1**

Click the shortcut once the app has downloaded



**STEP 2**

Choose A - Z or Category Listing



**STEP 3**

From here you can call the company directly, email and get directions

For info on how to advertise and get your company listed please contact Janine - 083 456 4027







# earthbroker

**your sourcing solution for new & used equipment & machinery**

- Why deal with different people each month when you can deal with the same friendly people you always deal with.
- We are proudly South African. Support your country who understand your needs.
- WE are ABC Accredited - this means we do print the amount we say we print. No pie in the sky number. We send direct to the correct people in the industry.
- We have our PAMMS certificate...This means our database has been checked and validated.
- Your advert receives FREE online exposure on our website with our online magazine and the link to the magazine is on our App, Facebook, Instagram and LinkedIn.
- We design FREE of charge and all changes are done FREE of charge.
- NO contracts to be signed.  
*(Just a full calender months notice is required for cancellation)*



Audit Bureau of Circulations  
of South Africa



**We have an  
online magazine  
in which your  
advert is  
advertised free  
of charge**

**We offer excellent service and design.**

**Should you have people/companies you would like  
added to our database , we will happily do  
that should they not already be on our database.**

**Please call us for a prompt response and great service!**



For further info on how to get your company listed in the Earthbroker please call...**Janine - 083 456 4027**



## HITACHI ZX670 LCR-3

2011 / 20 000 HRS

082 780 0084 | 021 903 2667  
bradley@bmhtradinginternational.com



## HITACHI ZX470 LCR-5G

2013 / 12 600 HRS

082 780 0084 | 021 903 2667  
bradley@bmhtradinginternational.com



## CAT D9R

2013 MODEL  
3 UNITS AVAILABLE / NEW  
SERVICED  
CALL FOR PRICE

THOMAS MITTAG  
072 545 6223  
info@mae-equipment.com  
www.mae-equipment.com



## D8T DOZER

2011 model  
import unit  
Call for Price

THOMAS MITTAG  
072 545 6223  
info@mae-equipment.com  
www.mae-equipment.com



## KUBOTA U50-5

2017 / 300 HRS

082 780 0084 | 021 903 2667  
bradley@bmhtradinginternational.com



## CAT773F WATERBROWSER

2008 model  
Call for Price

THOMAS MITTAG  
072 545 6223  
info@mae-equipment.com  
www.mae-equipment.com



## LIEBHERR 538 LOADER

2013 MODEL  
(AUTOMATIC GREASING  
SYSTEM AND L5 TYRES)  
R 425 000 + VAT

082 454 0934  
charlesjnr@transand.net  
044 695 0105



## HITACHI ZX330LC-5G

2013 / 7 000 HRS

082 780 0084 | 021 903 2667  
bradley@bmhtradinginternational.com



## BELL B20D 18000 LTR

Watercart x 3

Naren Birdju  
+27 82 859 0766  
plantsales@andru.co.za



## BELL B20C DUMPER

(Not Registered)  
R 420 000 + VAT

082 454 0934  
charlesjnr@transand.net  
044 695 0105

For further info on how to get your company listed in the Earthbroker please call...**Janine - 083 456 4027**



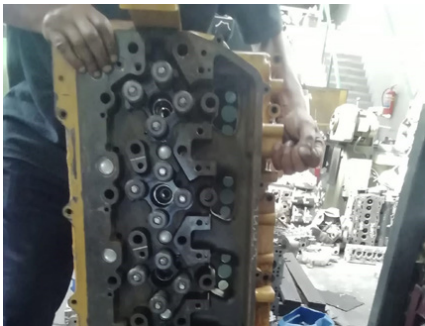
# Classifieds

For further info on how to get your company listed in the Earthbroker please call...Janine - 083 456 4027



**BELL L2106D**  
R700 000,00 + VAT

Dewald Hattingh: +27(0) 72 547 2198 +27(0) 11 973 3737  
info@atlasmasjiene.co.za



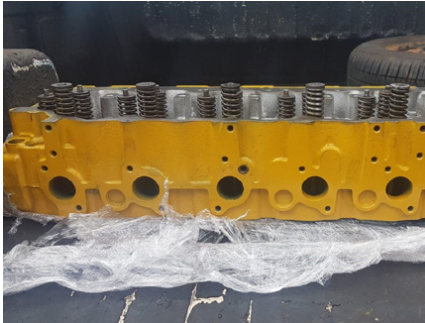
**C11/13 COMPLETE HEAD**

WhatsApp Message  
+27 (0)82 405 3494  
sales@ipsglobal.net



**D5G NEW COOLER GROUP**

WhatsApp Message  
+27 (0)82 405 3494  
sales@ipsglobal.net



**3126B COMPLETE HEAD**

WhatsApp Message  
+27 (0)82 405 3494  
sales@ipsglobal.net



**930 DIFF**

WhatsApp Message  
+27 (0)82 405 3494  
sales@ipsglobal.net



**C6.6 LONGBLOCK**

WhatsApp Message  
+27 (0)82 405 3494  
sales@ipsglobal.net



**D85-18 NEW TRACKGROUPS**

WhatsApp Message  
+27 (0)82 405 3494  
sales@ipsglobal.net



**3126 ENGINE**

WhatsApp Message  
+27 (0)82 405 3494  
sales@ipsglobal.net



**CATERPILLAR 320DR2**  
R950 000,00 + VAT

Dewald Hattingh: +27(0) 72 547 2198 +27(0) 11 973 3737  
info@atlasmasjiene.co.za

For more info on advertising your machine or spares in the classifieds please call Janine on 083 456 4027  
janine@earthbroker.co.za

For further info on how to get your company listed in the Earthbroker please call...Janine - 083 456 4027



For further info on how to get your company listed in the Earthbroker please call...**Janine - 083 456 4027**



## BELL B20C

Mechanically good condition.  
Very well priced.  
**R145 000**

Rodney  
0731039582  
rodney@marodew.co.za



## STRIPPING HITACHI 870/3

Good Runner stripping for  
spares. Parts still in excellent  
condition.

Rodney  
0731039582  
rodney@marodew.co.za



## CAT992G FEL FOR SALE

Beautiful CAT992G FEL for sale.  
2004 model with 33000 hrs. Bucket  
recently refurbished. Transmission  
and rear centre portion recently  
redone/overhauled.

Call Charl on  
082 451 7697  
charlo@dego.co.za



## 1X USED CAT D7G DOZER

Year: 1980  
Serial no: 92V09714  
Tilt blade, 3 shank ripper  
Berco "salt" link assemblies

Shawn Michell 082 568 4033  
shawn@plantfinder.co.za  
www.plantfinder.co.za  
TEL: 041-379 1717



## KAWASAKI Z90-2

For sale  
R480 000,00 +VAT

Adriaan 076 127 2977  
Marc 072 530 7373  
Rodney 073 103 9582



## 1X USED ATLAS WEYCOR AR60 FEL

Year: 2017 / SMR: 2268 hours  
Quick hitch, bucket & pallet forks.  
Auxiliary Hydraulics

Shawn Michell 082 568 4033  
shawn@plantfinder.co.za  
www.plantfinder.co.za  
TEL: 041-379 1717



## 1X USED CAT 226B2 SKIDSTEER LOADER

Serial no: MJH15131  
Year: 2010 / SMR: 5650  
Quick hitch, bucket &  
pallet forks.

Shawn Michell 082 568 4033  
shawn@plantfinder.co.za  
www.plantfinder.co.za  
TEL: 041-379 1717



## 1X USED JCB 406 FEL

Serial no: 2318993  
Year: 2015 / SMR: 2850 hours  
Quick hitch, bucket &  
pallet forks. Kohler Engine.

Shawn Michell 082 568 4033  
shawn@plantfinder.co.za  
www.plantfinder.co.za  
TEL: 041-379 1717



## 1X USED KOMATSU D61EX-23 TRACKED DOZER

S/no: B50067  
Year: 2015  
SMR: 10000 hours  
PAT blade, with 3 shank ripper.

Shawn Michell 082 568 4033  
shawn@plantfinder.co.za  
www.plantfinder.co.za  
TEL: 041-379 1717



## 1X USED JCB 406 FEL

Serial no: 2318993  
Year: 2015 / SMR: 2850 hours  
Kohler Engine.

Stuart McKenzie  
082 558 7901  
smj@mckenzieplant.co.za  
www.mckenzieplanthire.co.za

For further info on how to get your company listed in the Earthbroker please call...**Janine - 083 456 4027**



For further info on how to get your company listed in the Earthbroker please call...Janine - 083 456 4027



**BELL B25D  
ADT X 1**

Naren Birdju  
+27 82 859 0766  
plantsales@andru.co.za



**2 X KOMATSU  
D51EX-22  
DOZER**

Stuart McKenzie  
082 558 7901  
smj@mckenzieplant.co.za  
www.mckenzieplanthire.co.za



**MERCEDES-BENZ  
ATEGO  
TIPPER TRUCK**

(2001 Model)  
R440 000 +VAT

082 454 0934  
charlesjnr@transand.net  
044 695 0105



**KOMATSU GD675-5  
/ GD655-3  
GRADERS**

Naren Birdju  
+27 82 859 0766  
plantsales@andru.co.za



**MERCEDES-BENZ  
POWERLINER 2629**

(1985 Model)  
R 250 000 + VAT

082 454 0934  
charlesjnr@transand.net  
044 695 0105



**KOMATSU  
WA430-6  
FEL X 3**

Naren Birdju  
+27 82 859 0766  
plantsales@andru.co.za



**1 X CAT 320D**

2012 model  
11000 hours

Jason Ward  
+27 83 412 1077  
jason@sa-ems.co.za



**KOMATSU  
PC270 - 7  
EXCAVATOR X 1**

Naren Birdju  
+27 82 859 0766  
plantsales@andru.co.za



**1 X CAT 320D**

2009 model  
8700 hours

Jason Ward  
+27 83 412 1077  
jason@sa-ems.co.za



**1 X KOMATSU  
PC300**

8300 hours  
2012 model

Jason Ward  
+27 83 412 1077  
jason@sa-ems.co.za

For further info on how to get your company listed in the Earthbroker please call...Janine - 083 456 4027



## Agriculture / Forestry

Bell Equipment  
Filter Centre  
LNE Agri-Earth

## Attachments

BMH Trading International  
CTC Plant Company (PTY) Ltd  
Rhino Excavator Hammers  
Plant Finder  
Machinery Contractors

## Buckets

INMINE  
Industrial Plant Solutions  
Machinery Contractors  
Paramount Equipment  
STM Mining  
TJB Earthmoving Parts  
Wearpact

## Crushing

Marsay Equipment  
Transand

## Dyno Testing

Earthmoving Specialist  
Mzantsi Transmissions  
Power Transmission Technology

## Exhausts

Rustpet Exhausts

## Engineering

All Africa Supplies  
Earthmoving Specialist  
Earthmach  
East Coast Gears  
Gears for Africa  
Grind Right Engineering  
KDH Hydraulics  
P&R Earthmoving  
TJB Earthmoving Parts

## Gearbox / Transmissions

East Coast Gears  
Mzantsi Transmissions  
P&R Earthmoving  
Power Transmission Technology  
Sintech  
Vortex

## Gears

East Coast Gears  
Gears for Africa

## G.E.T / Undercarriage

Blumaq  
Capital Equipment Parts  
Centrax  
ESP  
ITR Africa  
Industrial Plant Solutions  
Mid Plant Services  
P&R Earthmoving  
Paramount Equipment  
Spec-Cast Wear Parts  
STM Mining  
TJB Earthmoving Parts  
Tractor Grader Spares  
Wearpact

## Hydraulics

Industrial Plant Solutions  
KDH Hydraulics  
Mid Plant Services  
P&R Earthmoving  
Power Transmission Technology  
One Stop Procurement  
TJB Earthmoving Parts

## Lifting Equipment

Liugong  
Spider Mini Cranes SA

## Lubricants & Oils

Bell Equipment  
Earthmach  
Filter Centre

## Machine Hire

Amalgamated Plant  
BLC Plant Company  
Rhino Excavator Hammers  
Spider Mini Cranes SA

## New Machines

Barloworld SEM  
Bell Equipment  
Earthmach  
Kemach JCB  
Lovol Construction  
Liugong  
Powertrans  
Spider Mini Cranes SA

## New Parts

Bell Equipment  
Blumaq  
CTC Plant Company  
Capital Equipment Parts  
Centrax  
East Coast Gears  
ESP  
Filter Centre



## New Parts

ITR Africa  
 Industrial Plant Solutions  
 LNE Agri-Earth  
 Lovol Construction  
 Machinery Contractors  
 Mid Plant Services  
 One Stop Procurement  
 Powertrans  
 Prime Plant  
 Queensburgh Plant Sales  
 Rhino Excavator Hammers  
 P&R Earthmoving  
 Paramount Equipment  
 Rustpet Exhausts  
 Shin-Li Trading  
 Spec-Cast Wear Parts  
 STM Mining  
 Shin-Li Trading  
 Sintech  
 Tractor Grader Spares  
 Wearpact  
 WEICHI SEM Parts

## Pumps

All Africa Supplies  
 Blumaq  
 Industrial Plant Solutions  
 Mid Plant Services  
 Shin-Li Trading

## Seats / Upholstery

The Seat Connection

## Services

Bell Equipment  
 CTC Plant Company  
 Dura Sales  
 Earthmach  
 Gears for Africa  
 INMINE  
 ITR Africa  
 LNE Agri-Earth  
 Lovol Construction  
 KDH Hydraulics  
 Power Transmission Technology  
 Prime Plant  
 Queensburgh Plant Sales  
 Marsay Equipment  
 Mid Plant Services  
 Vortex Transmissions

## Turbos

Industrial Plant Solutions  
 Turboworks

## Torque Convertors

ITR Africa  
 Industrial Plant Solutions  
 One Stop Procurement  
 Sintech

## Tyres

Associated Equipment / Vendel Civils

## Used Machines

Andru Mining  
 Atlas Masjiene  
 All Africa Supplies  
 Amalgamated Plant  
 Associated Equipment / Vendel Civils  
 Azrel Equipment  
 Barloworld SEM  
 BLC Plant Company  
 BMH Trading International  
 CTC Plant Company  
 Dozer  
 Dura Equipment Sales  
 Earthmach  
 Earthmoving Machine Sales  
 IMIME  
 Mae Equipment  
 Marsay Equipment  
 McKenzie Plant Sales  
 Mid Plant Services  
 Plant Finder  
 Powertrans  
 Queensburgh Plant Sales  
 Ramm Parts  
 STM Mining Equipment  
 Spider Mini Cranes SA  
 Transand  
 WesTrac CAT

## Used Parts

All Africa Supplies  
 Azrel Equipment  
 Bell Equipment  
 BLC Plant Company  
 BMH Trading International  
 Capital Equipment Parts  
 Dozer  
 Dura Parts  
 East Coast Gears  
 Earthmoving Machine Sales  
 Earthmoving Specialist  
 ITR Africa  
 INMINE  
 Industrial Plant Solutions  
 Machinery Contractors  
 Mid Plant Services  
 Nduna Spares  
 P&R Earthmoving  
 Parramont Equipment  
 Powertrans  
 Prime Plant  
 Queensburgh Plant Sales  
 Ramm Parts  
 STM Mining Equipment  
 Shin-Li Trading  
 Turboworks  
 WEICHI SEM Parts

Should you want to receive a free copy of our magazine please email your details to

[janine@earthbroker.co.za](mailto:janine@earthbroker.co.za)



# earthbroker

**your sourcing solution for new & used equipment & machinery**

The Earthbroker is published monthly and 5400 copies are sent to all the mines, quarries, and all companies dealing with earthmoving and construction in South Africa, Africa and some overseas countries. We are **ABC accredited** and have our **Pamms certificate No: 2A8DD9F60574FFC2A4EEEE01A**.

We also have a website where anyone can view the magazine, which is updated monthly with the latest changes and advertisements.

Please view our E-Mag on **[www.earthbroker.co.za](http://www.earthbroker.co.za)**

We accept about 5 editorials a month which we insert free of charge. Should you have an editorial which is relevant to the industry, we will gladly give it consideration.

For details of our prices on a full page, half page or quarter page, please phone me on 083 456 4027 or e-mail me at [janine@earthbroker.co.za](mailto:janine@earthbroker.co.za). We do not ask anyone to sign a contract, however we do insist on a **full calendar month's notice** for cancellation.

Please note that all quotations exclude VAT. We do insertions, (own printing costs) at R1.50 each excluding VAT. Classifieds at R500.00 excluding VAT for a business card size advertisement only.

**Janine Sargeant**  
(CELL)083 456 4027  
[janine@earthbroker.co.za](mailto:janine@earthbroker.co.za)

**Should you want to receive a free copy of our magazine  
please email your details to [janine@earthbroker.co.za](mailto:janine@earthbroker.co.za)**

## Conditions of Acceptance for advertising

### Adverts are subject to the following conditions:

1. Often we receive faxes with illegible letters or numbers. We accept no responsibility due to this.
2. We accept NO responsibility for errors in advertisements received telephonically.
3. We reserve the right to refuse placement or to place the advertisement/s as we see fit.
4. No responsibility will be taken for omission of advertisements, for any errors/colour-differences in advertisements or any results due to such errors.
5. We accept no responsibility for the quality of goods advertised. We merely bring buyers and sellers into contact with each other and we are not responsible for any results due to transactions made through the advertisements.
6. Please note one full calendar months written notice for cancellations.
7. Payment due prior to publication or interest will be charged.
8. There will be an annual increase of 10% at the beginning of each year.
9. The Earthbroker will not be held responsible for content of any advert inserted in our magazine.



COMPANY	BRANCH	DESIGNATION	CONTACT	TEL NO	A/H-CELL	EMAIL
Andru Mining	JHB	Sales	Naren Birdju	(011)395 0200 / +27 82 859 0766		plantsales@andru.co.za
Atlas Masjiene	JHB		Dewald Hattingh	+27(0) 72 547 2198 +27(0) 11 973 3737		info@atlasmasjiene.co.za
Atlas Service Centre	JHB		Fourie Von Tonder		083 301 1632	
Action Equipment Co	JHB	Sales	Yolanda	011 452 1298		yolanda@action.co.za
Africaplant.com	Newcastle	Sales	Mark	034 318 3032	082 301 3961	admin@afriplant.com
Afritool – Rent	JHB		Karen Abrams	011 974 2819	082 523 9777	karen.abrams@fluor.com
Alf's Tippers JHB	Sales		Alf Ferreira	011 824 0013	083 260 6929	alfplant@global.co.za
All Africa Supplies	JHB		Jody Da Silva	011 918 9976		sales@allafricasupplies.net
Amplant	Polokwane		Eddie Simpson	015 293 1221	082 904 7694	simpsons@amplant.co.za
Anric Enterprises	JHB		Ric de Nysschen	011 740 0975	082 647 9955	anric@cybertrade.co.za
Aquajet Profiles (Pty)Ltd	JHB	Director & Sales	Brad	011 908 5550	073 470 4958	info@aquajetprofiles.co.za
Arch Equipment	JHB		Greg Archibald		082 803 4227	archhire@mweb.co.za
Associated Equipment Co	JHB	Sales	Jaap	011 801 4911/2	082 892 1327	associated1@xnet.co.za
AVANT SA CPT			Wally	021 851 0722	076 688 3399	info@avantsa.co.za
Azrel Equipment	JHB	Sales	Mike Imrie	(010)590 8048	083 230 3118	mike@azrelequipment.com
B&B Plant / Unicrane	Empangeni		Bob Fogg	035 787 0679	082 570 5781	sales@bbplant.co.za
Barloworld Equipment Co				011 929 0000		
Barloworld Equipment Co	Durban	Parts	Brett Woodhouse	031 705 8500	071 484 1035	bwoodhouse@barloworld-equipment.com
Barloworld Equipment Co	Durban	Parts	R. Haripersadh	031 705 8500		rharipersadh@barloworld-equipment.com
Barloworld Equipment Co	Newcastle	Parts	Milan Pather	034 315 2847	073 971 2046	mpather@barloworld-equipment.com
Barloworld Equipment Co	Newcastle	Sales	Brendan Moore	034 315 2847	073 781 8865	
Barloworld Equipment Co	Richardsbay	CRS	Rolfe Botes	035 797 6300	082 904 9619	jhumphries@bw-eq.com
Barloworld Equipment Co	Bloemfontein	Sales	Quentin Coetzee	051 4091200	078 460 2622	qcoetzee@barloworld-equipment.com
Bell Equipment	Richards Bay	Parts	Jackie Smith	035 907 9111	082 550 8791	bellparts@bell.co.za
Bell Equipment		Sales	Andrew Pretorius	011 928 9700	071 607 3978	partssales@bell.co.za
Bell Equipment	JHB	Used Parts	Fazel Patel	011 928 9700		usedparts@bell.co.za
Bell Equipment	JHB	Machine Sales	Myburgh	011 928 9700		sales@bell.co.za
Bert's Bricks (Pty)Ltd	Potchefstroom	Sales	Lizelle	(018)292 1615		marketing@bertsbricks.co.za
BKB Van Wyk	JHB			017 712 2132		vanwykinfo@telkomsa.net
Blumaq	JHB		John Beukes	011 966 5092		john.beukes@blumaq.com
BLC Plant Company	JHB	Machine Sales	Luigi Stravino	011 555 2000	082 552 7017	luigistravino@blcplant.com
BLC Plant Company	JHB	Machine Sales	Paolo Stravino	011 555 2000	082 852 3721	paolostravino@blcplant.com
BLC Plant Company	JHB	Machine Sales	Andrew McCall	011 555 2000	082 256 0334	andrewmccall@blcplant.com
BLC Parts	JHB	Parts Sales	Robbie Stocks	011 555 2000	082 492 9263	
BLC Parts	JHB	Sales	Mike du Plessis	011 555 2000	082 508 2908	mikeduplessis@blcplant.com
BLC Parts	JHB	Sales	Michael Marriott	011 555 2000	082 905 8983	michaelmarriott@blcplant.com
BMH Trading International	Cape Town		Bradley	021 903 2667	082 780 0084	bradley@bmhtradinginternational.com
Bom-mach / Stampede	JHB	Sales	Jabu	011 394 5704		info@stampede.co.za
Bruforce	JHB		Craig	011 393 1298	083 627 2533	bruforce@lantic.co.za
Burgers Equipment & Spares			Anka Burger	011 979 3636		admin.za@burgersafrica.com
Caldas Engineering & Manufacturing	JHB	Marketing	Melanie	011 453 7797		info@caldas.co.za
Capital Equipment Parts	JHB		Mark	011 568 4215		info@capiparts.co.za
Centrax	JHB	Sales	Brendan	011 974 4307	083 654 7885	brendan@centraxsa.co.za
Centrax	DBN	Sales	Steve	086 123 6872	083 613 0664	centraxkzn@telkomsa.net
Cranes Direct	Boksburg	Parts Sales	John Thage	011 894 8056	083 254 4068	john@cranesdirect.co.za
Cranes Direct	Boksburg	Sales	Mark Le Roy	011 894 8056	083 233 2140	mark@cranesdirect.co.za
CTC Plant Company	Cape Town	Owner	Colin McOwen	021 386 4190	082 440 4806	colin@ctcplant.co.za
CTC Plant Company	Cape Town	Sales	Evert Jooste	021 386 4190	082 825 8865	evert@ctcplant.co.za
CTC Plant Company	Cape Town	Sales	Peter Groenewald	021 386 4190	072 368 5581	peterg@ctcplant.co.za
CTC Plant Company	Cape Town	Sales	Mark Walker	021 386 4190	082 441 2446	markw@ctcplant.co.za
CTC Plant Company	Cape Town	Sales	Robert Freeman	021 386 4190	079 500 3940	robert@ctcplant.co.za
CTC Plant Company	Cape Town	Parts	Mark Swanepoel	021 386 4190	082 825 6966	marks@ctcplant.co.za
CTC Plant Company	Cape Town	Parts	Nico Vermeulen	021 386 4190	084 525 6966	nic_v@ctcplant.co.za
CTC Plant Company	Cape Town	Service	Olla van den Heever	021 386 4190	082 467 1894	olla@ctcplant.co.za
CTC Plant Company	Cape Town	Transport	Ian Geyser	021 386 4190	082 440 5861	ian@ctcplant.co.za
CTC Plant Company	Cape Town	Transport	Shaun Haman	021 386 4190	082 495 2640	shaun@ctcplant.co.za
DBZ Diesel Parts	JHB			087 751 4555	074 106 2158	jhb@dbzdiesel.com
DBZ Diesel Parts	Cape Town		Jason Martincich	021 556 6502	082 353 5971	jason@dbzdiesel.com
DBZ Diesel Parts	Durban			031 564 8091/2	082 565 8446	durban@dbzdiesel.com
D- MAN SALES	JHB	Sales	Wessels		072 172 7718	wessels@lpss.co.za
Deutz Diesel Engines	Meadowdale		Johan Reiners	(011)974 3549	082 457 1542	miere@icon.co.za
Deutz Diesel Power	Durban	Branch manager	Nivern Pather	031 700 2384	082 375 4912	nivern@deutz.co.za
Deutz Diesel Power	JHB		Nathan Kitchen	011 923 0600		nathan@deutz.co.za
DGI Trading	JHB		Henk Arnold	010 065 0888	083 233 0019	henk.arnold@dgitrading.co.za
Dirt Diggers	JHB		Vic Viljoen	011 023 6674	082 822 3915	vicv@merchantwest.co.za



**“The man who stops advertising  
to save money is like the man  
who stops the clock to save time.”  
- Thomas Jefferson -**

In difficult economic times one should put more effort into promoting  
your business, your services and your products.

Cutting back on your advertising will ensure that your business loses ground  
to competitors who know and understand this.



# Quick Reference

COMPANY	BRANCH	DESIGNATION	CONTACT	TEL NO	A/H-CELL	EMAIL
Dosco Hydraulic Eng. cc	Montague Gardens		David Laubscher	021 551 2283	082 579 6465	david@doscocape.co.za
Dosco Hydraulic Eng. cc	Montague Gardens		Mike Hart	021 551 2283	082 228 5031	
Dozer	JHB		Graeme	011 452 1224		info@dozer.co.za
Dozer	JHB	Specialized Sales	Chris Cronje	011 452 1224	082 491 5472	info@dozer.co.za
Dura Equipment	JHB	Sales	Prinsloo Munro	011 918 4760	071 611 7281	prinsloo@durasales.co.za
Dura Equipment	JHB	Sales	Ernest Human	011 918 4760	079 874 5458	ernest@durasales.co.za
Dura Equipment	JHB	Sales	Jerry van Niekerk	011 918 4760	082 895 5611	durasales.co.za
Dura Equipment	JHB	Sales	Coenie Albertyn	011 918 4760	083 251 8046	coenie@durasales.co.za
Dura Equipment	JHB	Sales	Curtis Brown	011 918 4760	083 258 5784	curtis@durasales.co.za
Dura Equipment	Cape Town	Sales	Pottie Potgieter	021 988 6618	083 600 0729	pottie@durasales.co.za
Dura Equipment	Cape Town	Sales	Gerrie du Randt	021 988 6618	082 950 7040	gerrie@durasales.co.za
Dura Equipment	Cape Town	Sales	Charmaine Lombard	021 988 6618	082 777 1544	charmaine@durasales.co.za
Earth Mach	Mpumalanga		Chris	017 843 2072	083 232 8713	chris@earthmach.co.za
Earth Moving Plant & Trans.	Pinetown		Richard	031 705 1770	083 777 0152	richard@ept.co.za
EHD Johannesburg		Sales	Lodewyk van As	011 870 5000		ehd@ehd.co.za
Earthmoving Machine Sales	KZN	Sales	Jason	031 777 1025	083 412 1077	jason@sa-ems.co.za
East Coast Gears	KZN	Sales	Johan	031 701 3500	084 244 3324	eastcoastgears@gmail.com
ELB Equipment				011 306 0700		elb@elbequipment.co.za
Equipment Parts & Engines	Isando	Managing member	Attie vd Bergh	011 571 9000	082 655 9276	info@equipmentparts.co.za
ESP	Isando	Div Manager	Gary Wright	011 398 1700	082 449 6773	garyw@espa.co.za
ESP	Benoni	Div Manager	Adrian Erasmus	011 845 2911	083 449 0519	adriane@espa.co.za
ESP	Pretoria	Reg Manager	Willie v.d Merwe	012 804 6706	082 789 0828	williev@espa.co.za
ESP	Middelburg	Div Manager	Leon Bezuidenhout	013 246 2520	083 778 9877	leonb@espa.co.za
ESP	Pinetown	Reg Manager	Shaun Clarke	031 705 4200	082 413 1103	shaunc@espa.co.za
ESP	Cape Town	Reg Manager	Jaco Bekker	021 945 1030	072 384 4901	jacob@espa.co.za
ESP	Port Elizabeth	Branch Supervisor	Rainier Gerber	041 484 4575	083 698 1805	rainierg@espa.co.za
ESP	Bloemfontein	Reg Manager	Craig Wansbury	051 432 4501	082 413 2708	craigw@espa.co.za
ESP	Kimberley	Branch Supervisor	Kingsley Olyn	053 831 8349	082 805 7558	kingsleyo@espa.co.za
Filter Centre	Pinetown	Manager	Viyen Maharaj	031 700 9074	076 727 3985	info@filtercentre.com
Filvent	Witbank		Bernard	013 656 2726		workshopmanager@filvent.co.za
Fluid Blast Engineering	JHB		George Slabbert		082 550 1385	fluid.blast@live.com
Force 8 CC	Cape Town		Justin Nicoll	021 535 1117	082 373 9802	info@force8.co.za
Full Blast Hydraulics	JHB		Andre Calitz	(011)900 3790		info@fullblasthydraulics.com
Fusion Torque Components	JHB	Director	Eldred Carstens	011 828 9023	083 460 6790	eldredfusion@telkomsa.net
Gears for Africa	JHB	Sales	Carl	011 824 2017		carl@gearsforafrica.co.za
Gears for Africa	CPT	Sales	Carl	021 577 1030		carl@gearsforafrica.co.za
GET Spares	JHB	Sales	Raymond	(011)397 5276	082 655 2301	sales@getspares.co.za
GET Spares	JHB	Sales	Freddy	(011)397 5276	082 604 0045	sales@getspares.co.za
GET Spares	JHB	Sales	Clyde	(011)397 5276	082 581 5152	sales@getspares.co.za
Gillroy	Durban		Rob Gillit	031 765 2745	083 661 2057	info@gillroyplant.co.za
G-Man Trading	JHB	Sales	Luke Jr.	011 672 7011		lukej@gman.co.za
GO Industry - Dove Bid			John Cowing	0861 463 683	083 662 0237	john.cowing@liquidityservices.com
GR Spares	Pinetown	Sales	Gavin	031 705 5463	082 452 8690	grspares@webstorm.co.za
Grindright Engineering	Middelburg		Piet De Vos	013 246 2308	064 849 2320	grindright@gmail.com
HL Du Plooy	Harrismith		Hennie Du Plooy	082 719 8744	082 574 4212	hennie@hlduplooyplant.co.za
Heavy Duty Earthmoving Parts			Jannie Burger	011 394 4125/6/7		jannie@hdep.co.za
HPE Africa	Jet Park	Sales Manager	Lani	011 397 4670		marketing@hpeafrica.co.za
HPE Africa	Durban	Branch Manager	Adam Armitage	031 700 3426		Adam.armitage@hpeafrica.co.za
HPE Africa	East London	Branch Manager	Leon Dreyer	043 732 1428		leon.dreyer@hpeafrica.co.za
HPE Africa	Cape Town	Branch Manager	Gary Pnematicatos	021 905 0581/2		Gary.P@hpeafrica.co.za
Industrial Engine Parts	JHB	Sales	Morne	011 868 5436	082 851 7514	sales@ieppower.co.za
Industrial Plant Solutions	Natal		David Botha		083 405 3494	sales@ipsglobal.net
Immine Inala Mining Services	Witbank		Clement Van Der Merwe		082 414 1393	sales@immine.co.za
ITR SA	JHB	National Sales	Manager Carel Zwieglaar	011 614 0070		carel.zwieglaar@itrafrica.com
ITR SA	Middelburg		Steven Hugo	013 590 5614		middelburg@itrafrica.co.za
ITR SA	Bloemfontein	Sales Manager	Jacques Billing	051 011 5620		jacques.billing@itrafrica.com
ITR SA	JHB	U/C Manager	Sean Smit	011 614 0070		sean.smit@itrafrica.com
ITR SA	CPT		Lee-Anne	021 905 7340		lee-anne.vandernest@itrafrica.com
ITR SA	Kathu	Branch Manager	Michiel Jacobs	053 723 2245		miachel.jacobs@itrafrica.com
ITR SA	EL	Branch Manager	Shaun Smith	043 748 3541		shaun.smith@itrafrica.com
ITR SA	PE	Reg. Manager	Basil De Coning	041 451 2210		basil.deconing@itrafrica.com
ITR SA	Pinetown	Sales Manager	Quintin Pillay	031 941 1133		bronwyn.claesson@itrafrica.com
ITR Africa	Zambia	Operations Manager	Andre Synders	260 96 351 3429		andre.synders@itrafrica.com
ITR Africa	Namibia	Director	Hanjo Schierschmidt	264 83 331 5160		hanjo.schierschmidt@itrafrica.com
J&T Earthmoving Maintenance	Kempton Park		Alex Savage		081 895 5583	alex@earthmovingmaintenance.co.za
Jacobs Transport	Vereeniging	Sales	Gys Jacobs	010 200 9946	083 544 0275	gys@jacobstransport.co.za
JBS Plant Hire	Klerksdorp		Tonie van den Heever	018 469 1016/7	083 654 7809	jjvdh@lantic.net
Johnson Taylor	JHB	Sales Manager	Graham	011 614 5122		graham@johnsonntf.co.za
JW Plant Hire and Sales	Welkom	Sales	Leon	057 355 1119	083 253 6110	j.w.plant@telkomsa.net
Kaltire			Jacques Roux	012 548 9327	083 777 9497	jacques_roux@kaltire.com
Kappa Engineering		Managing Director	Gerrie Visagie	011 828 5506/8	082 575 2199	gerrie@kappaeng.co.za
Kappa Engineering Procurement		Rebuild Director	Nathaniel Hauptfleisch	011 828 5506/8	082 928 6312	nathaniel@kappaeng.co.za
KDH Hydraulics	JHB		Ricus	011 762 9001/2	071 678 3746	ricus@kdhhydraulics.co.za
Kemach JCB	JHB			011 826 6710		sales@kemachjcb.co.za
Kemach JCB	Middelburg			013 244 1839		sales@kemachjcb.co.za
Kemach JCB	Pretoria			012 548 2956		sales@kemachjcb.co.za
Kemach JCB	Bloemfontein			051 432 3978		sales@kemachjcb.co.za
Kemach JCB	Durban			031 700 8278		sales@kemachjcb.co.za
Kemach JCB	Richards Bay			035 751 2718		sales@kemachjcb.co.za
Kemach JCB	CPT			021 949 7442		sales@kemachjcb.co.za
Kemach JCB	Port Elizabeth			041 453 1819		sales@kemachjcb.co.za
Kemach JCB	East London			043 732 1902		sales@kemachjcb.co.za
Kemach JCB	George			044 878 0366		sales@kemachjcb.co.za



COMPANY	BRANCH	DESIGNATION	CONTACT	TEL NO	A/H-CELL	EMAIL
Kemach JCB	Mthatha			047 531 1688		sales@kemachjcb.co.za
KHD Electrical			Delville Kuhn	011 392 4444		delville@khdiesel.co.za
Komatsu	Cape Town	Sales	Frederick van Ryneveld	021 951 1251	082 317 2849	info@komatsu.co.za
Komatsu	Gauteng	Sales	Breton Alexander	011 923 1000		info@komatsu.co.za
Komatsu	Gauteng	Sales	Graeme Armstrong	011 923 1000		Graeme.Armstrong@komatsu.co.za
Komatsu	Gauteng	Sales	Karen van der Walt	011 923 1000		Karen.vanderWalt@komatsu.co.za
Komatsu	Gauteng	Sales	Francois Griesel	011 923 1000		Francois.Griesel@komatsu.co.za
Komatsu	Gauteng	Sales	Sascha Caixeiro	011 923 1000		Sascha.Caixaieiro@komatsu.co.za
Komatsu	Pinetown	Sales	Jacques van der Sandt	031 710 4950	082 888 0995	info@komatsu.co.za
Komatsu	Port Elizabeth	Sales	George Hyman	041 452 6555	082 882 9576	robd@komatsu.co.za
Komatsu	White River	Sales	Fortune Mathiba	013 758 9900	083 675 1756	pietvw@komatsu.co.za
Komatsu	Wolmeransstad	Sales	Piet du Toit	018 596 2244	083 271 3567	info@komatsu.co.za
Komax Spares	JHB		Jacques	011 664 8828	082 616 1654	jacques@jsaeearth.co.za
Komax Spares	JHB		Gawie	011 664 8828	082 650 0505	
Komax Spares	JHB		Danie	011 664 8828	076 222 2708	
Kruiper Spares	Port Elizabeth	Sales	Gary	041 585 6455	083 321 0819	kruiper@global.co.za
Kruiper Spares	Port Elizabeth	Sales	Bill	041 585 6455	082 569 2740	kruiper@global.co.za
Kruiper Spares	Port Elizabeth	Sales	Philip	041 585 6455	083 235 3919	kruiper@global.co.za
Landboupert	Isando			011 966 9200		info@landboupert.com
Leo Hydraulics				011 976 1941		admin1@leohydraulics.co.za
LiuGong Machinery SA	JHB	Parts		011 979 3636		admin.za@burgersafrica.com
LNE Agri Earth (Pty) Ltd	JHB	Sales			083 327 3237	LNE@LNE-AgriEarth.com
LPM Procurement	Germiston	Office	Linda Patricio	011 776 9160	083 637 7122	info@lpmprocurement.co.za
Machinery Contractors	Brits		Wayne	012 250 3534		wayne@machinerycontractors.co.za
Mae Equipment	Witbank	Sales	Thomas Mittag		072 545 6223	info@mae-equipment.com
Mafika Engineering	JHB			011 334 1120		info@mafika.co.za
Marange Plant & Mining	Bloemfontein		Maryke	053 841 0415	082 296 9810	maryke@marange.co.za
Marsay Equipment	Johannesburg		Tim Marsay	011 781 7410	083 654 4248	tim@marsayequip.co.za
Masslift Africa Mitsubishi Forklifts Dbn		Product Support/Spares	Brandon	031 700 8480	078 697 6161	Brandon@mlift.co.za
McKenzie Plant	Sales	Richmond/KZN	Stuart McKenzie	033 212 2181	082 558 7901	sjm@mckenzieplant.co.za
MHS Plant	JHB	Sales	Conrad	010 500 6193	082 781 9481	conrad@mhsplant.com
Midplant Services	JHB	Sales	Kellas	011 967 0055/60	083 675 1385	sales@midplant.com
Midplant Services	JHB	Sales	Jeff	011 967 0055/60	083 657 6123	sales@midplant.com
Midplant Services	JHB	Sales	Lee	011 967 0055/60	083 459 1695	sales@midplant.com
Milltech Engineering			Neil	011 421 7821	083 460 6510	neil@milltech-eng.com
Multi One Evolution	Benoni		Lofty Van Wyk		082 888 8899	info@multi-one.co.za
Mzantsi Transmissions	Johannesburg	Sales	Darryl Cilliers	011 868 5130	071 684 5784	info@gearboxes.me
N12 Truck Yard	Delmas – Mpumalanga				013 661 1039	sales@n12truckyard.co.za
Nduna Spares	Steelport		Natasha Reynders	013 230 3852		ndunaspar@gmail.com
New Beginnings Designs	JHB		Suken	011 791 4120	082 923 7987	suken@nbdesigns.co.za
NUCO Auctioneers	Dooringkloof East Pretoria		Jaco De Jager		011 206 8963	jaco@nucoauctioneers.com
One Stop Procurement	Benoni		Roger Melenas	011 420 1003	079 493 4486	roger@onesp.co.za
P&R Earthmoving	JHB	Sales	Scott	010 823 6385		scott@prearthmoving.com
P&R Earthmoving	JHB	Sales	Grant	010 823 8821		grant@prearthmoving.com
P&R Earthmoving	JHB	Sales	Ladis	010 823 7322		ladislas.l@pandearthmoving.com
P&R Earthmoving	JHB	Sales	Greg	010 823 6276		greg@prearthmoving.com
Pacific Construction Equipment		Fairleads Benoni	Mark	011 453 1567	082 441 4587	markivan@mweb.co.za
Paramount Tracks	JHB	Sales		010 007 3258	082 894 5547	sales@paramounttracks.com
Paul Heslop Plant Services			Paul Heslop	086 111 5422	074 101 8239	paul@pixie.co.za
PEX Hydraulics	Cape Town	Sales	Nick Kotzee	021 556 3232		nick@pex.co.za
PEX Hydraulics	Johannesburg	Sales	Mark Dickason	011 882 8413		mark@pex.co.za
Pex Hydraulic Repairs	KZN	Sales	Priscilla Shanker	031 705 5050	084 429 8654	priscilla@pexkzn.co.za
Pilot Crushtec	JHB			011 842 5600		sales@pilotcrushtec.co.za
Plant Finder	PE		Shawn Michell	041 379 1717	082 568 4033	shawn@plantfinder.co.za
Powertrans Rebuild Centre	Isithebe		Ricky Naidoo	032 459 5700	082 555 4925	info@powertrans.co.za
Power Transmissions Technology	Benoni		William	011 022 8570		info@pttech.co.za
Primeplant	JHB		Francois	011 979 4853	066 489 4891	spares@primeplant.co.za
Queensburgh Plant Sales	JHB	Used Sales	Wikus	011 964 1631	083 235 5665	qpsales@mweb.co.za
Queensburgh Plant Sales	JHB	New Sales	Albert	011 964 1467	082 652 4907	qpsales@mweb.co.za
R21 Trucks	Centurion	Sales Manager	Mark Noble	011 206 8958	082 226 2220	mark@r21trucks.co.za
Ramm Parts	Witbank		Adriaan	076 127 2977		adriaan@rammparts.co.za
Ramm Parts	Witbank		Mark	072 530 7373		marc@rammparts.co.za
Ramm Parts	Witbank		Rodney	073 103 9582		
Randle Parts	KZN	Sales	Stan		083 653 4270	
Randle Parts	KZN	Sales	Justin		083 639 1982	justin.cope@randleparts.co.za
Randle Parts	KZN	Sales	Geoff		074 843 5298	
Rankin Training	DBN		Marcel	031 702 8447	082 909 9070	marcel@rankintraining.co.za
Reef Fuel Injection Services	JHB	Manager	Warren Hauser	011 873 2354		warren@reeffuel.co.za
Rent a Dozer	Marble Hall	Owner	Theodor Kleynhans	013 261 1746	083 459 5593	admin@rentadozer.co.za
Replacement Spares Unltd. / RSU	Pretoria		Sales Paul Pelsner	012 803 8714		paul@rsu.co.za
Rham Equipment	Olifontfontein		Michael Combrink	011 203 7900		info@rham.co.za
Rhino Excavator Hammers	JHB		Paul	086 111 5422	074 101 8239	sales@rhinohammers.co.za
Rhino Excavator Hammers	JHB		Clive	(011)397 3327	071 670 8707	sales@rhinohammers.co.za
Rocktech Earthmoving Wearparts	JHB	Manager	Derek Swift	011 793 6838	082 561 4682	derek@rocktech.co.za
Roger's Undercarriage	JHB			011 964 2695	083 974 5851	rogers.uc@mweb.co.za
Ruspet Exhausts	JHB		Russell	011 827 2824	083 448 7669	russell@ruspet.co.za
Scotty's Plant Hire	Pinetown		Ashley Scott	031 700 8000		scottys.plant@mweb.co.za
Scotty's Plant Hire	Pietermaritzburg		Ashley Scott	033 386 1653/14		scottysprmbales@mweb.co.za
Sclanders Mech Natal		Sales	Ivan Kaisten	031 700 8083	083 653 3724	ivan@schlandermech.co.za
SEM	JHB	Parts	Barry Fang		072 399 9817	bm@semrsa.co.za
SEM	JHB	Parts	Saaj		061 564 1167	parts1@semrsa.co.za
Sew's Plant & Civils	KZN		Sunash	031 507 2491	082 284 5082	info@sews.co.za
Shin Li Trading	Johannesburg			011 396 1081/87	079 872 0465	sales@shinlitrading.co.za



# Quick Reference

COMPANY	BRANCH	DESIGNATION	CONTACT	TEL NO	A/H-CELL	EMAIL
Shonakhona Logistics				032 943 3428	073 188 2004	
Sino Plant	Gauteng	Sales Manager	Mark Noble	011 206 8958	082 226 2220	mark@sinoplant.co.za
Spec-Cast Wear Parts	JHB	Sales Manager	Shelton Holdsworth	011 396 1713	063 733 4626	shelton@spec-cast.co.za
Spec-Cast Wear Parts	Middelburg	Sales	Herman Bezuidenhout	013 813 1413	072 187 6943	herman@spec-cast.co.za
Spec-Cast Wear Parts	Kathu, N/Cape	Sales	Ilse van Rooi	053 010 1304	067 414 8832	northerncape@spec-cast.co.za
Sintech	JHB	Sales	Jacob Nkabinde	011 823 2359		sales@sintech.co.za
SparePower	JHB	Parts Sales		011 845 4184	082 457 2804	terry@sparepower.co.za
STM Mining	JHB	Sales	Barney v Rooyen	011 894 6192	072 086 6163	barney@stmmining.co.za
The CAT Rental Store / Barloworld		Durban		(031)569 8500	082 909 9188	mnicolia@barloworld-equipment.com
The Seat Connection	JHB	Sales	Lydia/Graham	011 452 6802/6814		info@seatconnection.co.za
TJB Earthmoving Parts Buying	JHB		Brad	+27 71 154 3786		brad@tjbearthmoving.co.za
Tommy's Auto Parts	Newcastle		Ahmed	034 375 8111	072 889 2581	exportintl@aol.com
Tractor and Grader Supplies	JHB	Sales	Jeannine	011 392 7533		jeannine@tags.co.za
Tractor and Grader Supplies	Witbank	Sales	Francois	087 943 8661		francois@tags.co.za
Tractor and Grader Supplies	Durban	Sales	Gary	031 700 8250		gary@tags.co.za
Tractor and Grader Supplies	Cape Town	Sales	Neal Simpson	021 946 1561		neal@tags.co.za
Tractor and Grader Supplies	Swaziland	Sales	Tiago	+268 2 518 4548		tiago@tags.co.za
Tractor and Grader Supplies	Namibia	Sales	Handre	+264 61 264710/1/2		handre@powerpartsnamibia.co.za
Transand			Fran cois Gerber	044 695 0105	082 454 0934	charlesjnr@transand.net
Trysome cc	JHB	Supplies	Jaco	(011)823 5650		jaco.vandermerwe@trysome.cc
TTC Engineering & Hydraulics	JHB		Owner Tino	011 845 2837	082 822 4676	tino@ttcenghyd.co.za
TTC Engineering & Hydraulics	JHB		Admin Chanel	011 845 2837		admin@ttcenghyd.co.za
Turboworks	Centurian	Sales		012 653 7507	082 824 8037	sales@turboworks.co.za
Unity	JHB	Sales		011 845 1630	082 457 0221	unitysalesandservices@gmail.com
VR Diesel & Turbo			Wayne	013 246 1003	083 310 9235	wayne@vrdiesel.net
Vendal Civils	JHB		Anton	011 801 4911/2	082 923 5397	vendels@mweb.co.za
Vendel Equipment Sales	JHB	Sales	Jaap	011 801 4911/2	082 892 1327	associated1@xnet.co.za
Vita Plant & Equipment	Brits	Machine Sales & Repairs	Costa Voyiatzakis	012 252 2915	082 521 7095	nicholas@vitaplant.co.za
Vortex transmissions	JHB		Johan	011 452 4430	082 333 1005	vortex@mweb.co.za
Vortex transmissions	JHB		Jan	011 452 4430	082 333 1004	vortex@mweb.co.za
WH Auctioneers	Midrand	Sales	Shannon	011 574 5700	084 520 5000	info@whauctions.com
WH Auctioneers	Midrand	Sales	Mathew	011 574 5700	084 252 5000	info@whauctions.com
WH Auctioneers	Midrand	Sales	Tim	011 574 5700	082 371 1069	info@whauctions.com
WAHA Equipment	Midrand	Sales	Will	011 574 5728	076 037 9516	will@waha.co.za
Wearpact	JHB	Sales	Linda	011 845 3234	083 453 3960	mwwrp@mweb.co.za
Weichai	JHB	Parts	Barry Fang		072 399 9817	bm@semrsa.co.za
WesTrac	AUS		Ron Lanzon	+61 418 927 625		Ronald.Lanzon@westrac.com.au
Wilson Plant	CPT	Sales	Miles Wilson	021 534 9536	082 928 9215	admin@wilsonplant.co.za
Yellow Metal SA	Pretoria	Sales	Pieter Botha	011 970 1299	082 805 8220	sales@ymsa.co.za
ZF Services South Africa	JHB	Sales: Service Parts	Warren Viviers	(011)457 0031	082 776 2759	warren.viviers@zf.com
ZF Services South Africa	JHB	Workshop:Off-road division	Christo Uys	(011)457 0091		christo.uys@zf.com

Want Your company listed in our Quick Reference Guide? Please email your company details to [janine@earthbroker.co.za](mailto:janine@earthbroker.co.za)







# QPS

## QUEENSBURGH PLANT SALES

*Keep it simple buy quality*



**Your friendly supplier of  
new and used  
earthmoving parts**

**KOMATSU – HITACHI – HYUNDAI  
DOOSAN CATERPILLAR – NEW  
HOLLAND – TEREX – JCB CASE  
CONSTRUCTION – CARRARO  
CUMMINS**

**KEEP IT SIMPLE  
BUY QUALITY**

**EARTHMOVING  
MACHINE PARTS  
SALES REPAIRS**

Albert  
082-652-4907  
[albert@qps.africa](mailto:albert@qps.africa)

Riccardo  
061-224-6829  
[riccardo@qps.africa](mailto:riccardo@qps.africa)

Madelaine  
082-328-9370  
[madelaine@qps.africa](mailto:madelaine@qps.africa)

Dave  
082-708-7965  
[dave@qps.africa](mailto:dave@qps.africa)

Werner  
079-740-2088  
[werner@qps.africa](mailto:werner@qps.africa)

Wikus  
083-235-5665  
[wikus@qps.africa](mailto:wikus@qps.africa)

**WWW.QPS.AFRICA**  
**TEL (011) 964 1631**



# Your partner in sugar

Bell Equipment, finding mechanised solutions since 1954



Serving the sugar industry for over six decades has taught us the value of keeping equipment simple, whilst embracing advances in technology. Together with our partners, we offer a comprehensive range of cane loading and haulage solutions.

**Bell Equipment - committed to providing appropriate and relevant solutions to the agriculture and forestry industries.**

FOLLOW US ON



Tel: +27 (0)11 928 9700 • E-mail: [sales@bell.co.za](mailto:sales@bell.co.za)  
[www.bellequipment.com](http://www.bellequipment.com)

**Strong Reliable Machines  
Strong Reliable Support**

