

your sourcing solution for new & used equipment & machinery

earthbroker

email: janine@earthbroker.co.za web: www.earthbroker.co.za

volume 17 | issue 1 January 2021



SPEC-CAST WEAR PARTS

Trusted to deliver

Specialising in the supply of:

- Ground Engaging Tools
- Undercarriage Components
- Track Frame repairs & components
- Dragline & Heavy Mining Wear Parts
- General Castings & Forgings

MINING WEAR PARTS

Super-V Teeth & Adapters

Toplok Shrouds

Half Arrow Segments

Toplok Wing Shrouds

S95 Teeth & Adapters

Protectors

Heel Shrouds

Ground Engaging Tools

SERVICE EXCHANGE • REPAIRS • COMPONENTS

Caterpillar & Komatsu | Dozers & Excavators

Track Frames

JHB HEAD OFFICE

+27 11 396 1717/13
info@spec-cast.co.za
11 Elgin Street, Pomona,
Kempton Park, Johannesburg

www.spec-cast.co.za

MIDDELBURG
+27 13 813 1413
middelburg@spec-cast.co.za
6 Jaspis Street
Middelburg, Mpumalanga

NORTHERN CAPE
+27 53 010 1304
northerncape@spec-cast.co.za
Section C3, Portion of Farm Waterraad
Kathu, Northern Cape

Follow us:



Manufacturer's names, numbers, symbols and descriptions are used for reference purposes only and it is not implied that any part listed above is the product of the manufacturers.

WHEN THE COST OF A 35-TON CRANE MAKES A 5-TON JOB OUTRAGEOUSLY EXPENSIVE!
OUR AFFORDABLE RANGE OF 2.9-TON TO 10.0-TON CRANES MAKES
PERFECT “CENTS” FOR YOU AND YOUR CLIENTS.



WE HAVE MOVED
INTO NEW PREMISES
WITH A LARGER WORKSHOP
TO SERVICE & MAINTAIN
OUR EXPANDING
HIRE FLEET OF CRANES

AND TO OFFER
A BIGGER SERVICE
TO OUR GROWING
CUSTOMER'S NEEDS



UNIC

SPIDER MINI CRANES
SOUTH AFRICA

Head Office - 035 787 0679

Bob - 082 570 5781 | bob.uniccranes@bbplant.co.za

Tara - 079 694 3978 | tara.uniccranes@bbplant.co.za

JHB Office : Sean - 064 754 8419 | sean.uniccranes@bbplant.co.za

DBN Office: Phil - 071 118 7145 | phil.uniccranes@bbplant.co.za

Visit our website at www.bbplant.co.za

RENTALS | SALES | SERVICE

Head Office - 55 Knutzen Street, Empangeni, Kwazulu Natal

Johannesburg Office - Unit 2, 81 Bell Cnr Watt Street, Meadowdale Ext 1, Germiston

Contact Details

Sales Manager & Editor
Janine Sargeant
083 456 4027

Design / Layout
Dylan McDonald
082 485 3001

Sales Contact
083 456 4027

Electronic Origination & Printing
ROC Media

The Editors welcome articles and photographs, which will be considered for publication on their merit.

Disclaimer: The Editors and Publisher do not necessarily endorse any views or statements made by contributors.

Janine Sargeant
083 456 4027
(FAX) 086 685 1258
janine@earthbroker.co.za

Physical Address:
Suite 16, Hillcrest Office park
2 Old Main Road, Hillcrest, 3610

Postal Address:
P.O. Box 2484,
Hillcrest,
3650

Banking Details:
Earthbroker
First National Bank
Hillcrest
Code: 223726
Account No.: 62295649308



Audit Bureau of Circulations
of South Africa

We are ABC accredited

Pamms Certificate no:
2A8DD9F60574FFC2A4EEEE01A



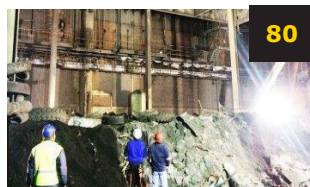
Manufacturer's names, numbers & descriptions are used for reference purposes only & it is not implied that any part listed is the product of the manufacturers.



79

BST Plant Hire

HPE Africa supplies another Hyundai tracked excavator to BST Plant Hire



80

Jet Demolition

Jet Demolition crowned 'Best of the Best' at World Demolition Awards 2020



84

JOBS FUND

Building a post-pandemic construction sector



81

MAXAM Mining

The All New MAXAM Mining Haulage Tire



82

SRK Consulting

The science of addressing climate change risks in mining

Industry News

Stay up to date with the latest Industry news

Contents

Advertisers Index	92-93	Marsay Equipment	71
All Africa Supplies	14-15	McKenzie Plant	62
Amalgamated Plant	32	Mid Plant Services	63
Associated Equipment	48-49	Mzantsi Transmissions	16
Atlas Masjiene	12	New Beginning Designs	13
B & B Plant	2	One Stop Procurement	53
Bell Equipment	37,100	P & R Earthmoving	23
BLC Plant	50	Paramount Equipment	42
BLC Trucks	51	Paramount Tracks	43
BLC Parts & Components	52	Plant Finder	26-27
Blumaq South Africa	30-31	Power Transmission Technology	69
Bulk Machine Hire	4	Prime Plant	33
Cat ER	38	Queensburgh Plant Sales	99
Catech Engineering	6	Ramm Parts	74
Centrax	10-11	Rhino Excavator Hammers	68
CTC Plant Company (PTY) Ltd	40	Ruspet Exhausts	12
Dozer Parts	66-67	Shin Li Trading	46-47
Dura Sales	54-56	Sintech	57
Earthmoving Machine Sales	76-77	Spec-Cast Engineering	16
Earth Mach	22	Spec-Cast Wear Parts	1,58-60
East Coast Gears	32	STM Mining	28-29,70
ESP	18-21	TJB Earthmoving	61
Filter Centre	38	Tambani Hydraulics	7
Gears for Africa	5	Tractor Grader Supplies	64-65
Industrial Plant Solutions	78	The Seat Connection	32
ITR Africa	24-25	Turboworks	39
Inmine - Inala Mining Services	34-35	Vortex Transmissions	36
KDH Hydraulics	72	Weichai & SEM Parts	45
Lee's Dozers	8-9	Wearpact	44
Liugong-Burgers	73	Westrac CAT	32
LNE Agri Earth (Pty) Ltd	41	Machine Classifieds	88-91
MAE Equipment	17	Quick Reference	95-98

**BMH IS OFFERING THE FOLLOWING EQUIPMENT FOR SALE.
ALL EQUIPMENT WAS PURCHASED NEW FROM THE RELEVANT O.E.M.
COMPLETE REPAIR AND MAINTENANCE HISTORY AVAILABLE UPON REQUEST.**



1 x HITACHI ZX400LCH-5G HYDRAULIC EXCAVATOR
Year Model: 2016
Hours (SMR): 14 880



2 x HITACHI ZX330LC-5G HYDRAULIC EXCAVATORS
Year Model: 2017
Hours (SMR): 9090 & 15 139



6 x BELL B30D ARTICULATED DUMP TRUCKS
Year Model: 2008 / 2011 / 2013
Hours (SMR): Between 10 000 – 25 000 hours

Prices available on request. Viewing of equipment can be arranged.

Contact Person:
Neil Britz - +27 66 197 0178



YES WE ARE OPEN

We form part of South Africa's essential services to keep our food industry and municipalities going. Keep safe and call if we can assist. 083 657 0522



GFA

Gears for Africa

WE MOVED TO BIGGER PREMISES
145 Lamp Road, Wadeville
Germiston

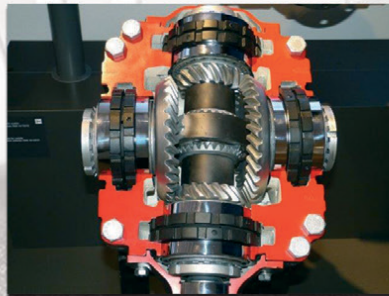
OUR QUALITY COMPARES 100 % TO ANY OEM SPARE MANUFACTURES

MANUFACTURE OF SPIRAL BEVEL GEARS NOW AVAILABLE



Gears for Africa products include all types of gears, sprockets, splines and related product for industrial and heavy duty equipment and practically all applications related to power drive systems:

- Bevel Gears
- Spur Gears
- Worm Gears
- Helical & Internal Helical Gears
- Crown Gears
- Internal & External Splines.



CROWN WHEEL AND PINION, PLANETARY, SUN AND RING GEARS
FINAL DRIVE GEARS, DIFF HOUSINGS SPIDER CROSS KITS, SPIRAL BEVEL GEARS

FOR THE MINING, RAIL, HEAVY EARTH MOVING, BUILDING,
AND AGRICULTURAL INDUSTRIES



Cape Town Branch
Tel: 021 577 1030
Fax: 021 577 1131

083 657 0522 | carl@gearsforafrica.co.za
www.gearsforafrica.co.za

JHB Branch
Tel: 011 824 2017
Fax: 011 420 3314

RH340 FACE SHOVEL BUCKET

BUCKETS: MPI/UT test and repair where necessary
Manufacture of all types of buckets / Repair and replacement of all parts on all makes of buckets: face shovels, lips, wrapper, leading edges, side plates, torque tubes and line boring

CATECH

Heavy Engineering Specialists

SPECIALISTS IN ALL EARTH MOVING AND MINING EQUIPMENT

Call: Lee: +27 (0) 71 687 9274
Johann: +27 (0) 76 570 6308
Email: lee@cattam.co.za / johan@cattam.co.za



VOLVO A40

WATER BOWSER



RH120

FACE SHOVEL

Manufacturers of: Tyre Handlers / Water Bowsers / Drill Rig Masts / Cable Realers

Rebuilds & Repairs: Track Frames / Buckets / Booms / Sprockets & Idlers / Car Bodies
Super Structures / Track Shoes / Sticks / Truck Bowls

General Engineering: Pins / Bushes / Flanges / Gears / Pinions



CAT D11T

TRACK FRAMES



RH340

SUPERSTRUCTURE

Page 6

volume 17 issue 1

machinery & equipment

earthbroker



ISO 9001 :2015

Call: +27 (0)11 975 9631
Fax: +27 (0)11 975 4315
info@tambanihydraulics.com
Lee Bray: +27 (0) 71 687 9274
Petrus Tambani: +27 (0) 82 908 2352
Email: lee@tamhyd.co.za / petrus@tamhyd.co.za



Tambani Hydraulics has a very wide variety of Service Exchange units available, enabling us to service the Mining, Construction and Earthmoving Industries

Other Services We Offer, But Are Not Limited to Include:

- A 24hr Stand-By & Breakdown Service
- Component Service Supply & Repair
- Extensive, Industry Leading Warranty on All Our Products
- Engineering Workshop



SERVICE EXCHANGE UNITS AVAILABLE

CATERPILLAR

320D
336D
374D/F
390D/F
777D/G
740
769
773
785
789
824H
988H
994F/H
966H
D9T
D10T
D11T
6015B
RH120E 6030
RH200 6050
RH340 6060

HITACHI

EX870
EX1200
ZX670
EX1900
EH1100

KOMATSU

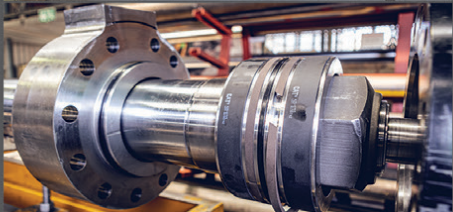
375-5
375-6
785-5
785-7
PC 1250
PC 3000

LIEBHERR

974
980
984
9100
9150

BELL

B20
B30
B25
B40
1808



YOUR **PRIME** SELECTION OF CAT DOZERS

WE OFFER OUR CUSTOMERS AN IMPRESSIVE FLEET OF OVER 25 CATERPILLAR DOZERS RANGING FROM D8-D10T'S TO CHOOSE FROM AND THEY ALL BOAST LOW HOURS.



Level 2 BBBEE

24/7 HOURS SUPPORT

Lee's Dozers
+27 71 687 9274

Included in our services we offer a highly skilled service team with 24/7 availability to offer repairs and support on call to ensure your hire is well maintained.

- **OUR FLEET IS MINE COMPLIANT**
- **OUR RATES ARE HIGHLY COMPETITIVE**
- **FLEET OF OVER 25 DOZERS AVAILABLE FOR HIRE**



CATERPILLAR D8R



CATERPILLAR D9T



CATERPILLAR D10T

We offer our customers an impressive fleet of over 25 Caterpillar Dozers ranging from D8's – D10T's fully reconditioned to OEM specifications, boasting low hours. Included in our services – we offer a highly skilled field service team with 24/7 availability to offer repairs and support to our valued clients ensuring your hire is well maintained with minimal down time.



Lee Bray: +27 (0) 71 687 9274 / Petrus Tambani: +27 (0) 82 908 2352 / Email: leeb@leesdozers.co.za / petrus@leesdozers.co.za
12 Roller Street, Spartan, Kempton Park, 1619

leeb@leesdozers.co.za

www.leesdozers.co.za



MAINTENANCE & REBUILDS



QUALITY REBUILDS TO OEM SPECIFICATIONS



What separates us from our competitors is our ability to offer rebuilds once our dozers have reached a certain hourly lifespan. This includes stripping the dozer down to its frame and the full overhaul of all major components to OEM specifications - including the engine, torque converter, transmission, final drive, track frames, blades (rebuilt & fitted with additional liner ware package for blade life extension), push arms, hydraulics, cylinders, pumps and boilermaking, all inhouse.

We proudly supply quality rebuilds that provide a 2nd life at brand new dozer specs delivered to your site with our inhouse low bed.

Lee Bray: +27 (0) 71 687 9274 / Petrus Tambani: +27 (0) 82 908 2352
Email: leeb@leesdozers.co.za / petrus@leesdozers.co.za
12 Roller Street, Spartan, Kempton Park, 1619

Level 2 BBBEE

www.leesdozers.co.za



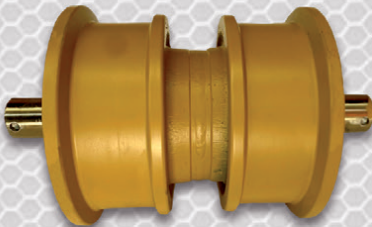
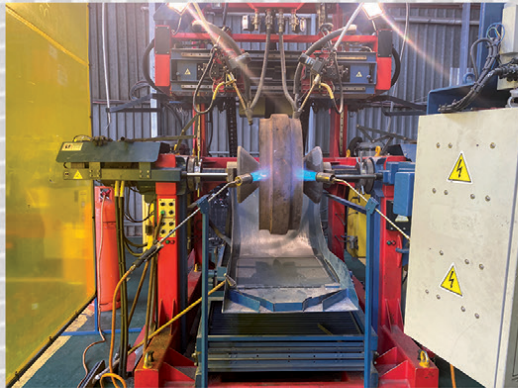


**ON THE RIGHT
TRACK WITH**

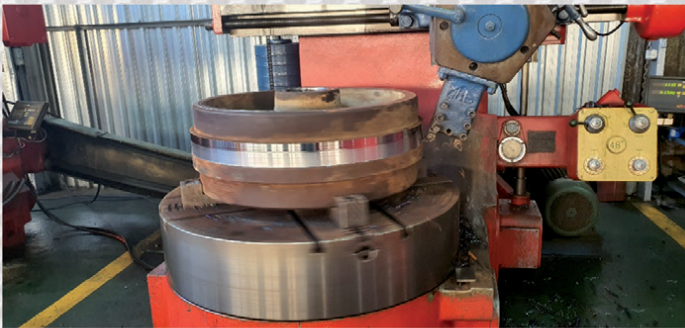
CENTRAX
Since 1974
www.centraxsa.com

Head Office: Tel: (011) 392 5055 / (011) 392 5056 / Fax: (011) 392 3091
Durban Branch: Tel: 086 123 6872 / Fax: 086 529 4683 / Steve: 083 613 0664

EXPERIENCE THE CENTRAX WORLD CLASS CONVERSION & REBUILD PROCESS
YOUR ONE STOP UNDERCARRIAGE SHOP



**DOUBLE FLANGE
ROLLERS**



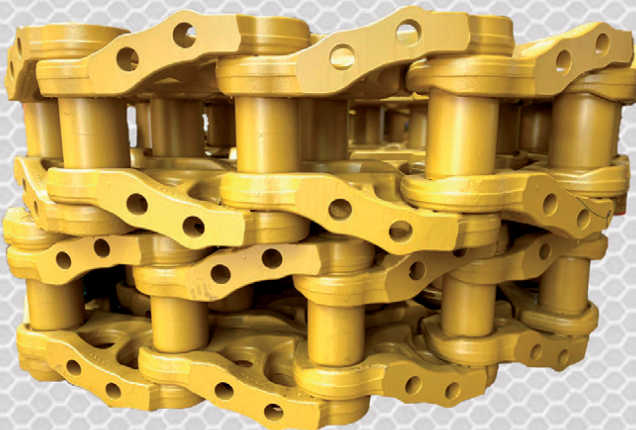
**SINGLE FLANGE
ROLLERS**



IDLERS



GROUSER SHOES



LINK ASSEMBLY'S



SPROCKET SEGMENTS



SPROCKETS

“LET’S DO THIS”

Manufacturers names, numbers and descriptions are used for reference purposes only & is not implied that any parts listed is the product of these manufacturers.



**ON THE RIGHT
TRACK WITH**

CENTRAX
Since 1974
www.centraxsa.com

Head Office: Tel: (011) 392 5055 / (011) 392 5056 / Fax: (011) 392 3091
Durban Branch: Tel: 086 123 6872 / Fax: 086 529 4683 / Steve: 083 613 0664

EXPERTS IN UNDERCARRIAGE & WEAR PARTS

OUR TEAM OF TRAINED EXPERTS WILL KEEP YOUR EQUIPMENT ON TRACK



320C EXTENDED BOOM EXCAVATOR FOR HIRE. CONTACT TREVOR: 083 608 5550

**CENTRAX - YOUR MARKET LEADER IN THE SUPPLY OF ALL YOUR BUCKET
PROTECTION AND WEAR PARTS, ASSURING YOU OF PREMIUM COST PER HOUR
PERFORMANCE ACROSS OUR COMPREHENSIVE PRODUCT RANGE**

Manufacturers names, numbers and descriptions are used for reference purposes only & is not implied that any parts listed is the product of these manufacturers.



Corner of Great North & Stanley Road
Brentwood Park AH, Johannesburg
Dewald Hattingh: +27(0) 72 547 2198 +27(0) 11 973 3737



CATERPILLAR 320D
R950 000,00 + VAT



SHANTUI SD13
R450 000,00 + VAT



VOLVO BL61
R350 000,00 + VAT



BELL L2106D
R700 000,00 + VAT



HITACHI EX75
R250 000,00 + VAT



CATERPILLAR 120H
R750 000,00 + VAT



CATERPILLAR D4H
R550 000,00 + VAT



CATERPILLAR 317
R450 000,00 + VAT

ATLASMASJIENE.CO.ZA | INFO@ATLASMASJIENE.CO.ZA

Russell at Head Office
Tel: 011- 827 2824/6
Fax: 011- 827 2850
russell@ruspet.co.za
felicity@ruspet.co.za

WE MUFFLE THE INDUSTRY
RUSPET EXHAUSTS
MANUFACTURERS OF TRUCK, BUS, EARTHMOVING & GENERATOR EXHAUSTS

Ruspet Durban Branch
Storm Hill
Cell: 081 737 1598
storm@ruspet.co.za



ALL OUR EARTHMOVING SILENCERS ARE MADE TO OEM SPEC.
WE HAVE NUMEROUS SPECIFICATIONS FOR CATERPILLAR, KOMATSU AND BELL ETC.



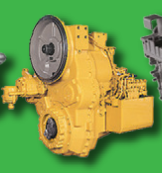
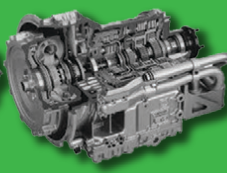
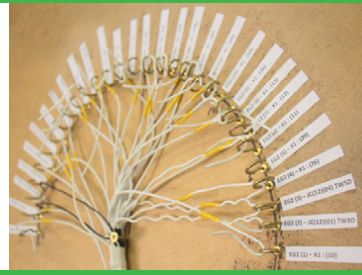
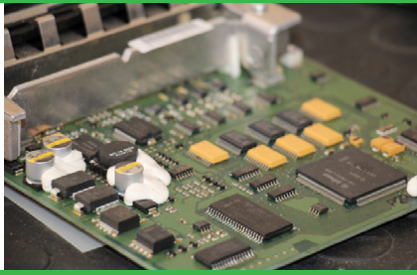
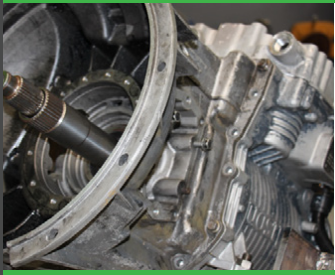
Our Integrated Approach

Transmission Rebuilds

Electronics Laboratory

Wiring Harness Workshop

Vehicle Repairs



New Beginnings Designs rebuilds off highway automatic transmissions and repairs transmission control units and gear selectors.

Visit our website for more info: www.nbdesigns.co.za



We specialise in:

- Transmission overhauls & repairs: Allison, Caterpillar, Clark, Komatsu & ZF
- Ecu & gear selector repairs & design
- Wiring harness repairs & manufacturing
- Dynamometer design & manufacture
- Off-highway vehicle rebuilds & repairs. (Mechanical & electronic)
- Service Exchange
- Transmissions in stock!



@newbeginningsdesigns



@nbdesigns.sa

CONTACT US

Phone: +27 11 791 4120

Email: suken@nbdesigns.co.za

Address: 1146 Minnie Postma Avenue, Florida 1709





All Africa Supplies

GLOBAL REACH - LOCAL SUPPLY

www.allafricasupplies.net

011 918 9976

Enquiries: sales@allafricasupplies.net

228 All Black Road Anderbolt Boksburg

BELL



CARRARO

HITACHI

VOLVO

Construction Equipment

DOOSAN



CAT



HYUNDAI
HEAVY INDUSTRIES CO.,LTD.

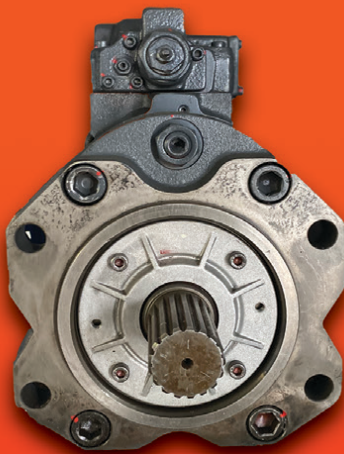
Mobil

ISUZU

KOMATSU

*All manufacturers names, numbers, symbols and pictures are for reference only. It does not imply that any of the parts are the product of these manufacturers.

HYDRAULIC PUMPS



**SERVICE EXCHANGE UNITS
AVAILABLE:**

K3V

K5V

A10VG45

A10V71

A10V68

A10V071

A10V45

FINAL DRIVES

**SERVICE EXCHANGE UNITS
AVAILABLE:**

CAT 320 B/C/D

CAT 330 B/C/D

DOOSAN 225

DOOSAN 220

HITACHI ZX 200

HITACHI ZX 570



All Africa Supplies

GLOBAL REACH - LOCAL SUPPLY

www.allafricasupplies.net

011 918 9976

Enquiries: sales@allafricasupplies.net

228 All Black Road Anderbolt Boksburg

BELL



CARRARO

HITACHI

VOLVO

Construction Equipment

DOOSAN



CAT



HYUNDAI
HEAVY INDUSTRIES CO.,LTD.

Mobil

ISUZU

KOMATSU

*All manufacturers names, numbers, symbols and pictures are for reference only. It does not imply that any of the parts are the product of these manufacturers.

REMAN ENGINES AVAILABLE:



C15	3406 C
C18	C11
C9	C13
3508	D4D
3116	4D102



**PARTS AND COMPONENTS
TO FIT THE FOLLOWING:**

**DOOSAN
CASE
JCB
HITACHI
NEW HOLLAND
HYUNDAI WHEEL LOADERS**



**AUTHORIZED
PARTS DISTRIBUTOR**

Follow us on Social Media



Facebook / All Africa Supplies



Google+



Instagram / @allafricasupplies

www.allafricasupplies.net



SPEC-CAST ENGINEERING

Trusted to deliver

Bulk Materials Handling Products

Bucket Elevators



Steel Buckets

Suitable for elevating sharp, bulk density materials



HDPE Buckets

Suitable for handling large volumes of all types of grains, feed and most food products



Nylon Buckets

Suitable for high impact & abrasion resistance. Better heat resistance and handling hot, abrasive and sticky materials

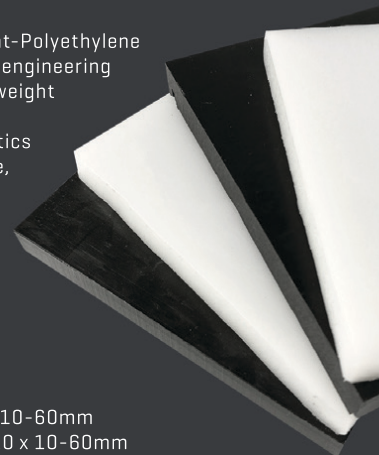
HDPE & UHMWPE Sheets

Ultra-High-Molecular-Weight-Polyethylene (UHMWPE) is thermoplastic engineering material, and its molecular weight can reach 4.5 to 9 million. It combines many characteristics such as abrasion-resistance, impact resistance/absorption, chemical corrosion resistance, low temperature resistance and self-lubrication etc.

Available in Black or White

HDPE SHEET: 2000 x 1000 x 10-60mm

UHMWPE SHEET: 3080 x 1220 x 10-60mm



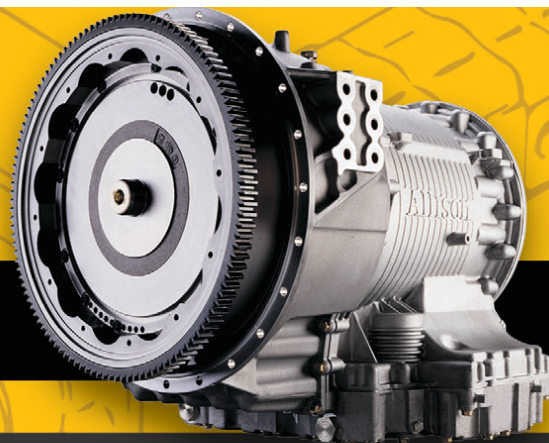
Contact our Bulk Materials Handling Specialist: Brian Jansen
Cell: +27 71 147 6868 | Email: brianj@spec-cast.co.za | Tel: +27 11 396 1713/7 | www.spec-cast.co.za



MZANTSI TRANSMISSIONS

6 Van der Bijl Street, Alrode South, Alberton

We offer specialised transmission repairs for heavy duty & on highway machines



WE OFFER SPECIALISED TRANSMISSION REPAIRS FOR HEAVY DUTY & ON HIGHWAY MACHINES

**BELL • TEREX • CAT • JOHN DEERE
HITACHI • DAEWOO • ZF • ALLISON • CLARK • FUNK**

We offer dyno testing on the following boxes:

**ZF - 4WG92, 4WG94, 4/6WG180/200/210/310
Allison - MD3560, HD4560**

**WE PURCHASE
2ND HAND TRANSMISSIONS**

**Bell B17B, B20B, B25B, 1206 & B40D
Transmissions in stock**

Email: info@gearboxes.me | **Tel:** 011 868 5130 | **Fax:** 086 634 7904 | **Cell:** 071 684 5784

THOMAS MITTAG
Cell: +27 72 545 6223
Mail: info@mae-equipment.com

MAE Equipment
Witbank/Riverside
(Yard)

www.mae-equipment.com

MAE EQUIPMENT

CAT349F



2015 model
5.089h (read-off) / import unit
Call for Price

CAT 390DL-ME



2014 model
9.880h (read-off)
Call for Price

ATLAS DM30 DRILL RIG



2008 model
fully refurbished
Call for Price

ATLAS DM30 DRILL RIG



2012 model
ready for production
Call for Price

SANDVIK DP1500 PANTERA



2010 & 2012 model
refurbished
4 units available

ATLAS-COPCO D65 DRILLS



D65 FlexiRoc & D65 SmartRoc
Drills available
Call for Details

KOMATSU D155AX-7



2013 model
refurbished / imported EU
Call for Price

KOMATSU D275 DOZER



2012 model
5.700h / new undercarriage
Call for Price

D8T DOZER



2011 model
import unit
Call for Price

CAT D9R



2013 model
3 units available / new serviced
Call for Price

KOMATSU D375 DOZER



2011 & 2008 models
available
Call for Price

CAT773F WATERBOWSER



2008 model
Call for Price

VOLVO A30D



2008 model
conversion to waterbowser
ZAR 1.550.000

WE BUY ALL KINDS OF EARTHMOVING, CONSTRUCTION OR MINING MACHINERY

WE PAY CASH WITHIN 24 HOURS

PLEASE CONTACT OR SEND OFFERS TO info@mae-equipment.com

„Your Partner for new & used Machinery and Equipment.“

www.mae-equipment.com

www.espa.co.za

ESP THE PROVEN ALTERNATIVE



Multi-brand parts suitable
for **CATERPILLAR**
earthmoving machinery



BENEFIT FROM OUR 9 MONTHS WARRANTY PERIOD ON NEW PARTS

ESP Johannesburg
Tel: (011) 398-1700

ESP Benoni
Tel: (011) 845-2911

ESP Pretoria
Tel: (012) 804-6706

ESP Middelburg
Tel: (013) 246-2520

ESP Pinetown
Tel: (031) 705-4200

ESP Cape Town
Tel: (021) 945-1030

ESP Port Elizabeth
Tel: (041) 484-4575

ESP Bloemfontein
Tel: (051) 432-4501

ESP Kimberley
Tel: (053) 831-8349

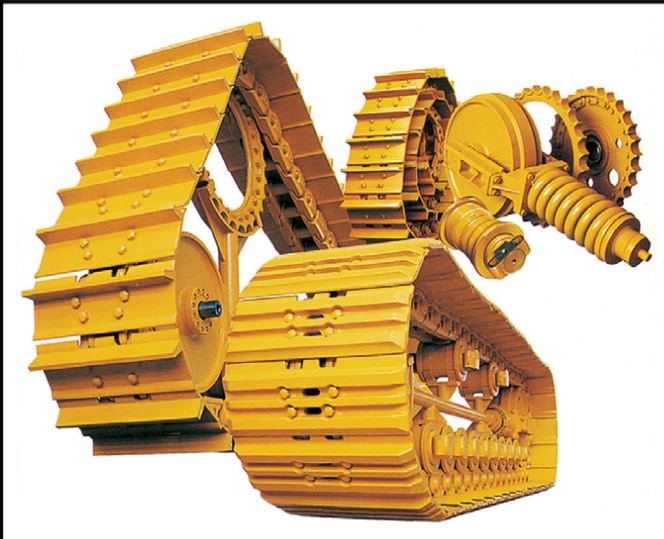


ISO 9001 Certified

Manufacturers' names, numbers, symbols and descriptions are used for reference purposes only and it is not implied that any part listed is the product of the manufacturers.

www.espa.co.za

ESP THE PROVEN ALTERNATIVE



BERCO undercarriage for earthmoving machinery



BENEFIT FROM OUR 9 MONTHS WARRANTY PERIOD ON NEW PARTS

ESP Johannesburg
Tel: (011) 398-1700

ESP Benoni
Tel: (011) 845-2911

ESP Pretoria
Tel: (012) 804-6706

ESP Middelburg
Tel: (013) 246-2520

ESP Pinetown
Tel: (031) 705-4200

ESP Cape Town
Tel: (021) 945-1030

ESP Port Elizabeth
Tel: (041) 484-4575

ESP Bloemfontein
Tel: (051) 432-4501

ESP Kimberley
Tel: (053) 831-8349

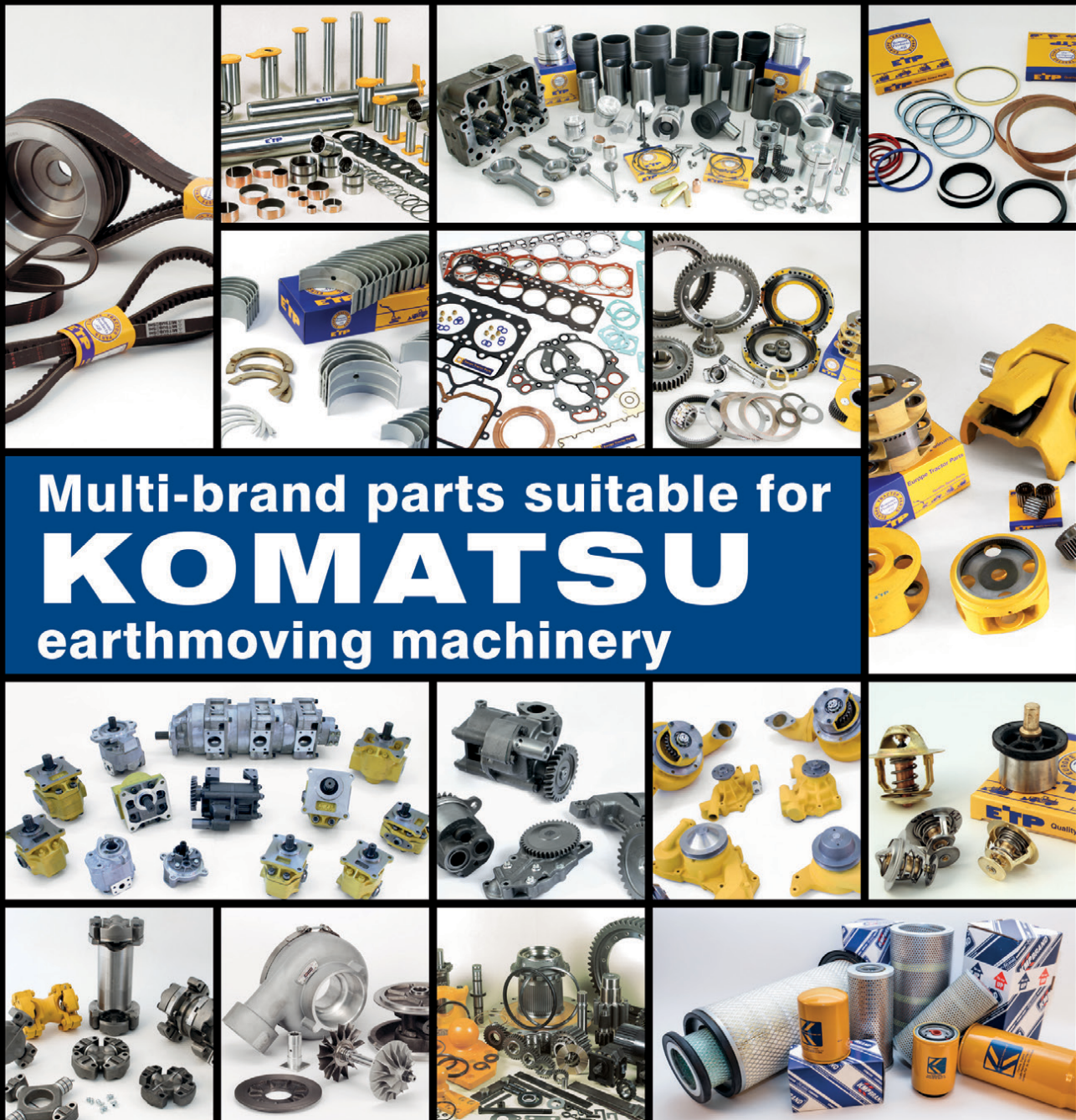


ISO 9001 Certified

Manufacturers' names, numbers, symbols and descriptions are used for reference purposes only and it is not implied that any part listed is the product of the manufacturers.

www.espa.co.za

ESP THE PROVEN ALTERNATIVE



Multi-brand parts suitable for
KOMATSU
earthmoving machinery

BENEFIT FROM OUR 9 MONTHS WARRANTY PERIOD ON NEW PARTS

ESP Johannesburg
Tel: (011) 398-1700

ESP Benoni
Tel: (011) 845-2911

ESP Pretoria
Tel: (012) 804-6706

ESP Middelburg
Tel: (013) 246-2520

ESP Pinetown
Tel: (031) 705-4200

ESP Cape Town
Tel: (021) 945-1030

ESP Port Elizabeth
Tel: (041) 484-4575

ESP Bloemfontein
Tel: (051) 432-4501

ESP Kimberley
Tel: (053) 831-8349

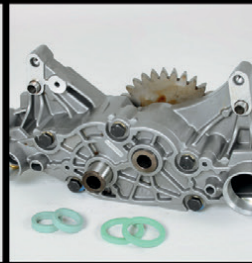
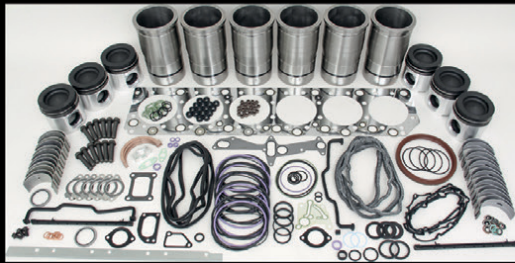


ISO 9001 Certified

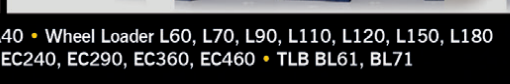
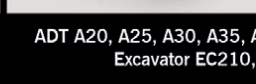
Manufacturers' names, numbers, symbols and descriptions are used for reference purposes only and it is not implied that any part listed is the product of the manufacturers.

www.espa.co.za

ESP THE PROVEN ALTERNATIVE



replacement parts
suitable for **VOLVO**
earthmoving machines



ADT A20, A25, A30, A35, A40 • Wheel Loader L60, L70, L90, L110, L120, L150, L180
Excavator EC210, EC240, EC290, EC360, EC460 • TLB BL61, BL71

BENEFIT FROM OUR 9 MONTHS WARRANTY PERIOD ON NEW PARTS

ESP Johannesburg
Tel: (011) 398-1700

ESP Benoni
Tel: (011) 845-2911

ESP Pretoria
Tel: (012) 804-6706

ESP Middelburg
Tel: (013) 246-2520

ESP Pinetown
Tel: (031) 705-4200

ESP Cape Town
Tel: (021) 945-1030

ESP Port Elizabeth
Tel: (041) 484-4575

ESP Bloemfontein
Tel: (051) 432-4501

ESP Kimberley
Tel: (053) 831-8349



ISO 9001 Certified

Manufacturers' names, numbers, symbols and descriptions are used for reference purposes only and it is not implied that any part listed is the product of the manufacturers.





MACH
EARTH
 TEL: 017 843 2072
 CELL: 083 232 8713
 WWW.EARTHMACH.CO.ZA



MINING AND CONSTRUCTION EQUIPMENT

**SPECIALISING IN
 GALLION, DRESSER,
 KOMATSU, SEM &
 CATERPILLAR**

MACS
auto
 www.macsauto.co.za



**REPAIRS ON ALL TYPES OF EQUIPMENT
 CUMMINS ENGINE CONVERSION ON KOMATSU
 TLB'S / REPAIR & SUPPLY OF NEW RADIATORS
 BREAK & CLUTCH REPAIRS / GENERAL REPAIRS
 & REBUILDING / AUTO ELECTRICAL REPAIRS
 & REWIRING / FUCHS OILS & GREASES /
 FIELD SERVICE REPAIRS**



SEM

A Caterpillar Brand



OTHER EQUIPMENT



GENIUNE SEM PARTS QUALITY AT ITS BEST

Steyn St. 34, Carolina, 1185.
 PO Box 1446, Carolina 1185
 Tel. (017) 843 2072 Fax. 086 732 1739
 Cell. 083 232 8713

chris@earthmach.co.za
www.earthmach.co.za
 VAT REG No. 4280260417
 BBEE Level 2



Scott : +27 10 500 2167

scott@prearthmoving.com

www.prearthmoving.com

YOUR EARTHMOVING COMPONENT SPECIALIST

No. 170 - 3rd Avenue, Bredell
Kempston Park, 1619.
South Africa

ATTACHMENTS • AXLES • BREAK GROUPS • CYLINDERS • ENGINES • FINAL DRIVES • G.E.T. • HYDRAULIC PUMPS • NEW PARTS • POWER TRAINS • TRANSMISSIONS • UNDERCARRIAGE

be62ua



KOMATSU HD785-5
Stripping for Spares

bd10zg



KOMATSU GD655
Motor Grader

bd64xj



KOMATSU HM400-3
ADT
Stripping for spares

bd32lf



2011 KOMATSU D375A-6
Dozer
14,876hrs

be62ue



CATERPILLAR D9T
Crawler Dozer
Stripping for Spares

be62ug



KOMATSU GD825
Motor Grader
Stripping for Spares

bd64xl



CATERPILLAR 988H
Wheel Loader
Stripping for spares

bd64xm



KOMATSU WA800-3
Wheel Loader
Stripping for spares

bf56ah



KOMATSU D475-5
Crawler Dozer

be62uf



HITACHI EX1200-3
Crawler Excavator
Stripping for Spares

bg57pl



CAT 336D & 320D
New Tracks

bf13mo



CATERPILLAR D10T
Ripper and blade Cylinders
- Rebuilt -

ba40yp



CATERPILLAR 16M
Transmission
- Rebuilt -

bf13mn



CATERPILLAR D10T
Final Drive
- New & Rebuilt -

bf56aq



CATERPILLAR C9
Industrial Engine

be93hl



CATERPILLAR C27
Engine for CAT D10T
- Rebuilt -



Kyle Silvestre
+27 10 823 6385
sales@prearthmoving.com



Ladislav Mutondo
+27 10 823 7322
ladislav.l@prearthmoving.com



Greg Gavazzi
+27 10 823 6276
greg@prearthmoving.com



Conrad Snyman
+27 10 823 7972
conrad@prearthmoving.com



ITR AFRICA

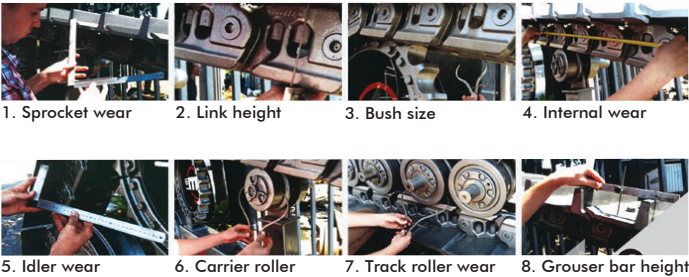
UNDERCARRIAGE MEASURING & WORKSHOPS



Undercarriage

The ITR undercarriage line includes chains, shoes, rollers, sprockets, idlers and segments manufactured within the group’s own production facilities. In addition to standard excavator and dozer applications, ITR undercarriage also covers asphalt road paving, drilling and logging machines. ITR’s flexible production and design expertise also allow for “tailor-made” products to suit any specialised application.

The ITR mini and compact undercarriage line also includes a strong selection of rubber tracks, bolt-on and clip-on rubber pads, rubber and polyutherane vulcanised shoes and city-pads (road liners).



1. Sprocket wear 2. Link height 3. Bush size 4. Internal wear
5. Idler wear 6. Carrier roller 7. Track roller wear 8. Grouser bar height

Undercarriage Measuring

ITR offers a complete undercarriage measuring service that provides a full analysis with recommendations, giving you the benefit of reducing cost per hour through preventative and scheduled maintenance.

Contact your nearest ITR branch today to schedule your appointment.

Undercarriage Workshops

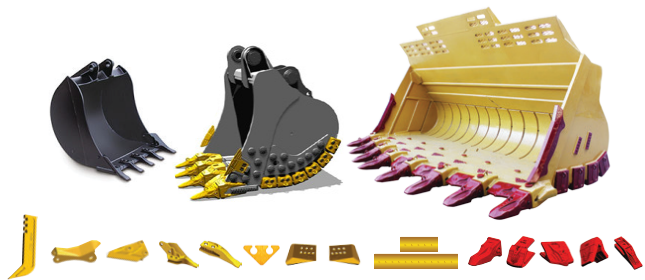
ITR offers Undercarriage Repair, Maintenance and Rebuild Services out of our Service Centres in South Africa and Zambia. Services include remove and refit shoes, turn pins and bushes, re-strip grouser shoes, rebuild idlers, fit new pins and bushes and trackframe repairs.



Johannesburg Tel: +27 (11) 614 0070 sales@itrafrica.com	Cape Town Tel: +27 (21) 905 7340 capetown@itrafrica.com	Port Elizabeth Tel: +27 (41) 451 2222 portelizabeth@itrafrica.com	East London Tel: +27 (43) 748 3541 eastlondon@itrafrica.com	Namibia Tel: +264 (83) 331 5160 namibia@itrafrica.com
Kathu Tel: +27 (53) 723 2245 kathu@itrafrica.com	Pinetown Tel: +27 (31) 941 1133 pinetown@itrafrica.com	Middelburg Tel: +27 (13) 590 5614 middelburg@itrafrica.com	Bloemfontein Tel: +27 (51) 011 5620 bloemfontein@itrafrica.com	Zambia Tel: +260 (212) 213 867 zambia@itrafrica.com



GROUND ENGAGING TOOLS AND BUCKETS



The ITR GET line features on-going development of new product lines as well as high-performance, innovation-based, original solutions.

The ITR **UNIK** line has been designed for any and all applications where high penetration, impact resistance and increased wear life are essential. Unique features are an innovative and modern self-sharpening design, a reinforced pocket structure, increased side pin protection, high impact resistance and selected ITR steel composition, all ensuring excellent performance and an extended wear life.

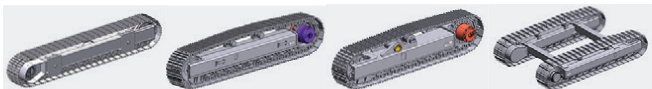
The **BYG Futura** Wear Technology Premium range is designed for mining machines up to 800 tons. The main features are its hammerless solutions that increase safety and reduce downtime, extra weight invested in reinforcing the key areas of the tooth where it has more exposure to wear, and its design with lateral and central ribs that facilitate the flow of material, significantly extending life while retaining its self-sharpening properties.

OILS AND LUBRICANTS



ITR has a range of quality lubricants that deliver superior engine protection and performance, for machines used in construction, industrial and marine sectors. ITR lubricants are formulated with highly refined base oils, extreme pressure agents, anti-wear and anti-corrosive resistance additives for smooth operation.

CRAWLER SYSTEMS AND TRACK FRAMES

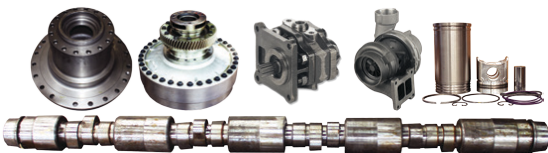


ITR offers Complete Undercarriage Crawler Track Solutions for many applications: Drill Rigs, Screen Plants, Crushing Plants, Underground Applications and more. The Crawler System is supplied complete, including Final Drives & Travel Motors.

TRACK ONE side frames are available for machines with a total weight between 500 kg and 200 tons.

These frames are typically used for crushers, drilling machines, conveyors, road pavers and milling machines.

REPAIR PARTS



ITR has developed the widest range of repair parts available on the market for earth moving machines today. Engine parts such as crankshafts, connecting rods, pistons, cylinder heads, cylinder blocks, cylinder liners, engine valves. Hydraulic parts like gear pumps, piston pumps and hydraulic steering systems. Clutch parts, cooling system parts such as radiators, oil coolers and pumps. Torque converters and their relative components. Braking system parts such as calipers, discs and air compressors. Electric parts such as engine starters, alternators, switches, sensors, batteries and worklamps. Parts for transmissions, differential systems and final drives. Chassis parts such as equalizer bars, bogies and guards.



THE FIRST CHOICE EARTHMOVING SOLUTIONS PROVIDER IN SUB-SAHARAN AFRICA

www.itrafrica.com

MANUFACTURER'S NAMES, NUMBERS & DESCRIPTIONS ARE USED FOR REFERENCE PURPOSES ONLY & IT IS NOT IMPLIED THAT ANY PART LISTED IS THE PRODUCT OF THE MANUFACTURERS



S. MICHELL,

THE PLANT FINDER CC

The **RIGHT EQUIPMENT** at the **RIGHT PRICE**

USED PLANT AVAILABLE



**1X VOLVO BL61
(4X4) TLB**

SERIAL NO: 11194
YEAR: 2008
SMR: 8300 HOURS.



**1X VOLVO BL61B
(4X4) TLB**

SERIAL NO: 1203289
YEAR: 2013
SMR: 7400 HOURS.



**1X USED HIDROMEK HMK62SS
MINI-TLB**

YEAR: 2018 / SMR: 865 HRS
FULLY ENCLOSED CAB WITH
AIR-CON. AUXILIARY HYDRAULICS
FITTED TO FRONT & REAR.
MULTI-PURPOSE LOADER BUCKET.



Follow & Like us on Facebook
facebook.com/ThePlantFinder

WWW.PLANTFINDER.CO.ZA

SHAWN MICHELL - 082 568 4033

Tel: 041-379 1717 / Fax: 041-379 4753

shawn@plantfinder.co.za



S. MICHELL,
THE PLANT FINDER CC
The **RIGHT EQUIPMENT** at the **RIGHT PRICE**

USED PLANT AVAILABLE



**1X USED ATLAS WEYCOR
AR60 FEL**

YEAR: 2017 / SMR: 2268 HOURS
QUICK HITCH, BUCKET &
PALLET FORKS.
AUXILIARY HYDRAULICS



**1X USED JCB VM115D
VIBRATORY ROLLER**

YEAR: 2011 / SERIAL NO: 1807554
CURRENT SMR: 1820 HOURS
DUAL FREQUENCY/AMPLITUDE,
DRUM DRIVE.



**1X USED CAT D7G
DOZER**

YEAR: 1980
SERIAL NO: 92V09714
TILT BLADE, 3 SHANK RIPPER
BERCO "SALT" LINK ASSEMBLIES



**1X USED KOMATSU BR380JC-01
MOBILE JAW CRUSHER**

SERIAL NO: 2591
YEAR: 2009
SMR: 6000 HOURS

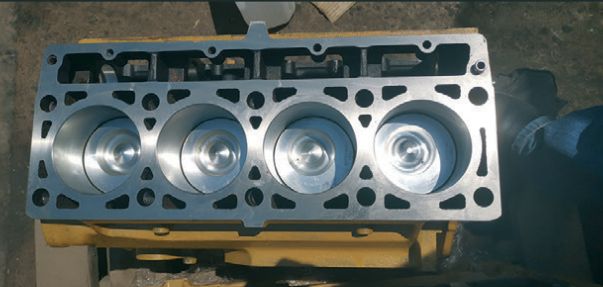
SHAWN MICHELL - 082 568 4033
Tel: 041-379 1717 / Fax: 041-379 4753
shawn@plantfinder.co.za

GOOD USED EARTHMOVING PARTS AND EQUIPMENT

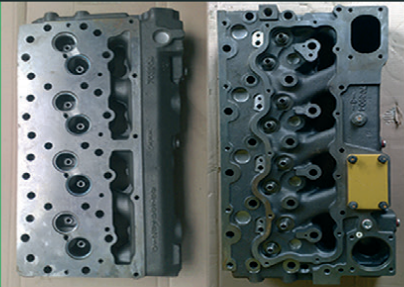


Tel: (011)894-6192 / (011)894-3377
Fax: (011)894 7914
barney@stmmining.co.za
donovan@stmmining.co.za

Office Hrs: Mon-Fri 07h00-17h00



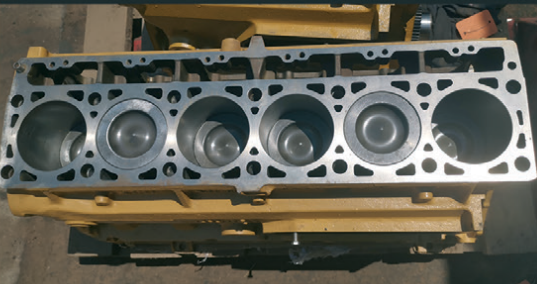
3114DI RECON SUB



HEADS TESTED & RECONDITIONED
3304 / 3306 / 3204 / 3116 / 3406 / 3412 / C9 / C13



REMAN SUB FROM CAT C9



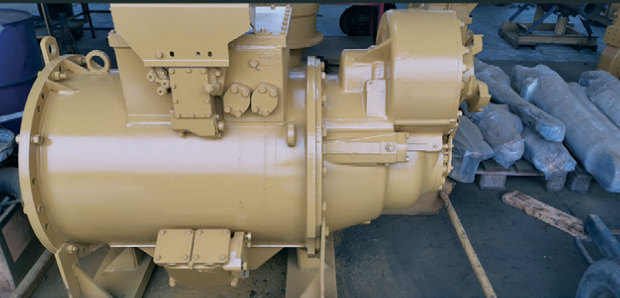
RECON 3126DI SUB



REMAN 3126 HEADS



D10T RECON
SERVICE EXCHANGE FINAL DRIVES



RECON 789C TRANSMISSION



CAT 140G TRANSMISSION
RECON SERVICE EXCHANGE



CAT 140G DIFF
RECON SERVICE EXCHANGE



D11R
FINAL DRIVE



988F-2 RECON
S/EXCHANGE T/CONVERTER



3412DI
REMAN SUB



D9T RECON FINAL DRIVE
SERVICE EXCHANGE

**STRIPPED
ENGINES**

3304/6
3204
3126
3406
3408
3412
3508
3512
3516

C6.4
C7
C9
C11
C13
C15
C18
C27
C32

MACHINES

EXCAVATORS

225
317B
318B
320B
325B
330B
320D
323D
330D

LOADERS

920
930
936G
938G
950A/H
966G
980F/G
988B

www.stmmining.co.za

GOOD USED EARTHMOVING PARTS AND EQUIPMENT

STM

MINING EQUIPMENT PTY(LTD)

Tel: (011)894-6192 / (011)894-3377

Fax: (011)894 7914

barney@stmmining.co.za

donovan@stmmining.co.za

Office Hrs: Mon-Fri 07h00-17h00



D375-5
STRIPPING FOR PARTS



FULLY REBUILT 140G GRADER
WITH WARRANTY



325C
STRIPPING FOR PARTS



980G FRONT END LOADER
FOR STRIPPING OR REBUILD



WA500-3 RUNNING BUT
FOR STRIPPING OR REBUILD



GOOD RUNNING 740
(B1P) SERIAL



GOOD RUNNING ZAXIS 200
UNDER 6 000 HRS



275-5
NO TRANSMISSION STRIPPING



938F
GOOD RUNNING MACHINE



950H
STRIPPING FOR PARTS



740 ADT DUMPERS X 2 RUNNING
FOR REBUILD OR STRIPPING



www.blumaq.com

Follow us on:



Spare parts suitable for VOLVO

We offer a wide range of items
with immediate delivery for your
VOLVO earthmoving equipment.



Alternative spare parts for Caterpillar

We offer a wide range of items
with immediate delivery for your
CATERPILLAR earthmoving equipment.

**Berco dealer in
Spain, Zambia,
Turkey and
South Africa:**



Contact:

+27 11 966 5092 **Johannesburg**
+26 096 0923 962 **Kitwe**
john.beukes@blumaq.com

Caterpillar®, komatsu®, cummins®, volvo® and case® are trade brands registered by their owners and are only used for reference purpose of the application of our spare parts.

Branches in Spain: Alicante | Almería | Asturias | Barcelona | Galicia | Madrid | Mérida | Ponferrada | Sevilla | Tenerife | Zaragoza
Branches in the world: Chile | United States | France | Portugal | Turkey | China | Russia | Italy | Romania | South Africa | Zambia | Peru



www.blumaq.com

Follow us on:



Following our success as **Berco** product distributor in Zambia, Blumaq South Africa has now also been appointed a distributor for this quality product in South Africa.

Blumaq South Africa now also offers **Berco quality undercarriage parts and repairs** from our operation based in Wadeville, Johannesburg.

Our fully serviced Track Undercarriage workshops offers a full service including Turning of Pins & Bushes / Re-stripping of Grouser shoes / Track Link repairs / Idler and Roller rebuilds / Track Frame Rebuilds.

Contact us today for a free on site wear assessment of your undercarriage components.

Contact:

+27 11 966 5092 **Johannesburg**

+26 096 0923 962 **Kitwe**

john.beukes@blumaq.com

**Berco dealer in
Spain, Zambia,
Turkey and
South Africa:**



Caterpillar®, komatsu®, cummins®, volvo® and case® are trade brands registered by their owners and are only used for reference purpose of the application of our spare parts.

Branches in Spain: Alicante | Almería | Asturias | Barcelona | Galicia | Madrid | Mérida | Ponferrada | Sevilla | Tenerife | Zaragoza
Branches in the world: Chile | United States | France | Portugal | Turkey | China | Russia | Italy | Romania | South Africa | Zambia | Peru



www.AmPlant.co.za

SPECIALISED PLANT HIRE





**Asphalt Equipment / Earthmoving Equipment
Milling Machines / Recyclers etc**

Contact - Eddie Simpson
Office : 015 293 1221 ext 304 / Cell : 082 904 7694
Email : simpsons@amplant.co.za

Quality used plant for sale

Westrac



USED EQUIPMENT

Ron Lanson : +61 418 927 625 | Email: Ronald.Lanson@westrac.com.au



2010 CAT AD55B
AUD \$ 295,000
SERIAL: JNW00176
STOCK: UM9796
HOURS: 23983
PERTH, WESTERN AUSTRALIA

**ENCLOSED AIR CONDITIONED EROPS CAB,
FIRE SYSTEM, HEAVY DUTY LINED BODY,
LOW HOUR REBUILT COMPONENTS,
AIR SUSPENSION SEAT, FAST FILL ENGINE,
HYDRAULIC, TRANS, RADIATOR,
FUEL AND MINE SPEC FITTED.**



The seat CONNECTION
Established 1991

011 452 6802
www.seatconnection.co.za
info@seatconnection.co.za
102 8th Avenue, Edenvale, 1609

Follow us on Facebook
facebook.com/TheSeatConnection

Whatsapp call us on
+27 11 452 6802

New seats

Rebuilds

Repairs



ISRI 3000/350



GAMEVIEW



ISRI 6860/870 NTS



AIR SUSPENSION

Quality service, the secret to our success.



SPM Engineering Services cc
east coast gears

**Specialising in earthmoving
power transmission rebuilds of:**

- Front end loaders
- Final drives
- Drop boxes (transfer case)
- Differentials etc.

**MANUFACTURE OF ALL
GEARS AND REPAIRS**



**REPAIR CARRIER
HOUSINGS/ HUBS**



Tel: 031 701 3500 | Cell: 083 383 4943 | Fax/Email: 086 224 3982
Email: eastcoastgears@gmail.com | 24 Henwood Road, Pinetown, KZN



FIELD SERVICES NOW AVAILABLE



Primeplant (Pty) Ltd
Tel: 011 979 4853 Fax: 011 396 1653
www.primeplant.co.za



We specialize in the repair & maintenance of **CAT** TLB's



Hennie Nelson
South Africa, Witbank
+27 82 414 1393
sales@inmine.co.za



VARIETY OF
CATERPILLAR & HITACHI ENGINES



CAT 16H GRADER ENGINE
RUNNER



CATERPILLAR 777 / 785
D11 TORQUE CONVERTERS



CAT 785 RECONDITIONED
& USED FINAL DRIVE



RECONDITIONED
CAT 773 DIFF

WWW.INMIME.COM

Plot 26 Naauwpoort, Benicon Park, Witbank 1036
Mpumalanga, South Africa

CAT 773F Stripping for parts



Available parts:

2 x Final drives	All suspension cylinders
1 x Diff	1 x Radiator pack
1 x Transmission	

CAT 773F Bowl



Stripping 2 x Cat 992G



**PLEASE ENQUIRE FOR
INFORMATION ON
AVAILABLE PARTS**

CAT 789C Used Engine



SET / RECONDITIONED CAT 6030 FACE SHOVEL CYLINDERS



**RH120 / RH200
& RH340 Sprockets**



**2 x Boom Lift Cylinders / 2 x Stick Cylinders
2 x Bucket Tilt Cylinders**



**RH120E Reconditioned
Cylinders**



**INMINE have a full operational workshop, that does all work inhouse
from Idler rebuilds to Grouser shoe restripping.**

Repairs to all OFF and ON Highway Transmissions, Torque Convertors, Gearboxes, Differentials and Power Take Off's



VORTEX
TRANSMISSIONS

Tel: 011 452-4430/1
Parts: 011 452 3296 / 452 3390
Johan: 082 333 1005
Jan: 082 333 1004
Fax: 011 609 5302
Email: vortex3@mweb.co.za



Allison Fuller • Clark • Caterpillar • Funk Twin Disk



SERVICE UNITS:

- AT 545 bell (spec)
- MT 643 bell (spec)
- MD 3560 P TID 2
- MD 3560 P TID 3
- MD 3060 TID 3
- 4500 ORS GEN 4
- 4500 ORS R GEN 4 LIFE FILTER Bell B40D
- 4500 ORS R GEN 4 Bell B50E
- Terex engine PTO 'S TR 60
- Euclid and Terex transmission PTO'S
- Euclid 6610A CEC2
- Terex 6610AR CEC 2
- Euclid 6620A

UNITS THAT WE ALSO DO:

- Bell grader transmissions
- Cat transmissions
- Funk transmissions
- Terex & Euclid Differential center portions
- Bell differential center portion
- Chelsea PTO'S
- Terex engine PTO'S TR 100



Vortex Transmissions sell genuine Allison parts for all our transmissions Dyno testing is done in house and all transmissions that are tested have test reports

Prices cropped!

Get prepared and get up to 30% off



Part No.	Description
268613	1000 hour service kits with lubricants
268616	Cane Pivot / C-Frame rebuild kit
268617	Cane grab and cylinder rebuild kit
361368	Tailwheel Repair kit 120A
361369	V20 Handle kit 120-125A - 220-225A
361370	Tailwheel Repair kit 125A

Part No.	Description
361371	Cylinder Seal kits 125A
361372	Boom Pins & Bush kit 120A
361373	Eaton Pump Repair kit
361374	Cylinder Seal kits 125A (previous generation)
361375	Boom Pins & Bush kit 125A-220A
361376	Cylinder Seal kits 220A

Because your equipment deserves some TLC after a busy season.

*Special valid from November 2020 to end of March 2021
Available from Bell Equipment South Africa and our African, South American and
South East Asia & Oceania dealer network*

FOLLOW US ON    
E-mail: bellparts@bell.co.za
www.bellequipment.com

**Strong Reliable Machines
Strong Reliable Support**

BELL



FILTER CENTRE

Quality Lubricants
NOW IN STOCK

Leaders in Heavy-Duty Filtration



AGRICULTURE



www.filtercentre.com
info@filtercentre.com
031 700 9074



Earthmoving Specialist

Old & New
Generation Experience



WE SPECIALIZE IN CUMMINS ENGINES

**REPAIRS, SPARES
& MAINTENANCE TO
LEADING EARTHMOVING
MACHINERY**

Full Diagnostic
Troubleshooting

Carlos Caroto: 079 519 6769 | Email: jennycaroto@live.co.za

Earthmoving Specialist



**OLD & NEW
GENERATION EXPERIENCE**



FULL DIAGNOSTIC TROUBLESHOOTING

**REPAIRS, SPARES & MAINTENANCE TO
LEADING EARTHMOVING MACHINERY**

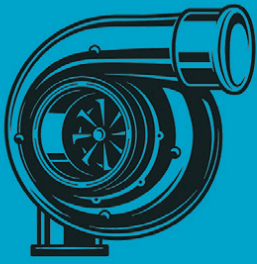
SPECIALISING IN: CAT ECPC, ICM COUNTERSHIFT
& POWERSHIFT TRANSMISSION REBUILDING

Carlos Caroto: 079 519 6769 | Email: jennycaroto@live.co.za

Page 38

volume 17 issue 1

machinery & equipment **earthbroker**



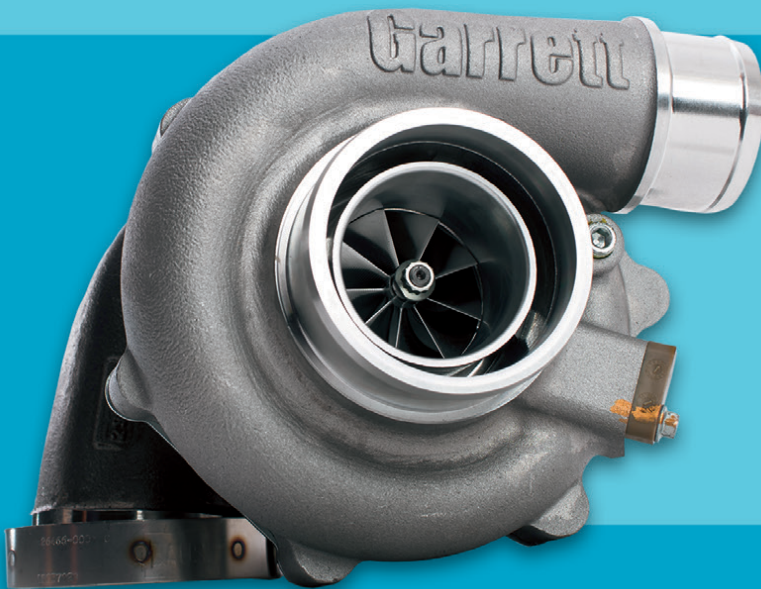
TURBOWORKS

"Best quality turbochargers - no compromise"

For all Construction and Mining machine turbocharger requirements, contact TURBOWORKS for the best and most cost-effective solution.

TURBOCHARGERS

- New
- Reconditioned, service-exchange
- Repairs



SECTORS

- Mining
- Plant hire
- Transport
- Agriculture
- Passenger vehicle
- Generators

**POPULAR SERVICE-EXCHANGE TURBOCHARGERS,
AVAILABLE FOR IMMEDIATE DELIVERY.**



- All makes and models
- 12 Months warranty
- Free "Strip-and-quote"
- Pick-up and deliver
- Supplying the entire African continent



57 Adriana Crescent, Gateway Industrial Park, Rooihuiskraal, Centurion

Tel: +27 12 653 7507

Email: sales@turboworks.co.za

www.turboworks.co.za

After-hours: +27 82 824 8037



C.T.C. PLANT COMPANY
SINCE 1992

ATLAS COPCO

- Atlas Copco SB150/SB152 Moils
- Atlas Copco SB200/SB202 Moils
- Atlas Copco SB300/SB302 Moils
- Atlas Copco MB1200 Moils
- Atlas Copco MB1500 Blunts
- Atlas Copco MB1600 Moils
- Atlas Copco MB1700 Moils
- Atlas Copco HB2200 Moils
- Atlas Copco HB4200 Moils

FURUKAWA

- Furukawa F20
- Furukawa F22
- Furukawa F27
- Furukawa F35
- Furukawa HB20G
- Furukawa HB30G
- Furukawa FXJ 275

KOMATSU

- Komatsu JTHB400

KRUPP

- Krupp HM135
- Krupp HM200
- Krupp HM300
- Krupp HM700
- Krupp HM712
- Krupp HM720
- Krupp HM780
- Krupp HM900
- Krupp HM960
- Krupp HM1000
- Krupp HM1500
- Krupp HM2500

OMAL

- Omal 80
- Omal 1000
- Omal 1300

CATERPILLAR

- CAT H63
- CAT H110
- CAT H120
- CAT H130S
- Cat H160

JCB

- JCB HM033T
- JCB HM160T
- JCB HM165
- JCB HM180T
- JCB HM260
- JCB HM265
- JCB HM385
- JCB HM386Q
- JCB HM660
- JCB HM690
- JCB HM1260
- JCB HM1270Q
- JCB HM1350
- JCB HM1560
- JCB HM1750
- JCB HM1760Q
- JCB HM2180
- JCM HM2460
- JCB HM4160
- JCB HM4200

SOOSAN

- Soosan SB40 TS
- Soosan SB81 TS

MSB

- MSB MS200
- MSB MS225
- MSB MS250
- MSB MS300
- MSB MS500
- MSB MS550
- MSB MS600
- MSB MS700
- MSB MS800
- MSB MS900

RAMMER

- Rammer S23
- Rammer S52
- Rammer E66
- Rammer E68
- Rammer G90

KOMAC

- Komac KB2000
- Komac KB3600

MONTABERT

- Montabert SC16
- Montabert SC22
- Montabert SC28
- Montabert SC36
- Montabert BRH40
- Montabert BRH501
- Montabert BRH620
- Montabert BRP140
- Montabert M140
- Montabert M150
- Montabert M300
- Montabert M700
- Montabert M900
- Montabert V1600

TELEDYNE

- Teledyne TB2580

SANDVIK

- Sandvik BR623
- Sandvik BR2266
- Sandvik BR2568

BOBCAT

- Bobcat HB680 Moils
- Bobcat HB880 Moils
- Bobcat HB980 Moils
- Bobcat HB1180 Moils
- Bobcat B1200 Moils
- Bobcat B1400 Moils

INDECO

- Indeco HP150 Moils
- Indeco HP200 Moils
- Indeco HP350 Moils
- Indeco HP500 Moils
- Indeco HP600 Moils
- Indeco HP700 Moils
- Indeco HP1200 Moils
- Indeco HP1500 Moils
- Indeco HP1800 Moils
- Indeco HP2000 Moils
- Indeco HP2500 Moils
- Indeco HP3000 Moils
- Indeco HP4000 Moils
- Indeco HP5000 Moils
- Indeco HP7000 Moils
- Indeco MES521 Moils
- Indeco MES621 Moils
- Indeco MES1750 Moils

SURPLUS MOILS & HAMMER PARTS

**FOR SUPERIOR QUALITY PARTS
ON ALL MAJOR BRANDS**

Cnr. Michigan & Manchester
Streets, Airport Industria,
Cape Town, South Africa

Mark Swanepoel: +27 82 825 6966
Roy Heather: +27 61 421 9184
www.ctcplant.com





*New Year.
New possibilities.
Build this year with us!*

SINCE 2013



Agri Earth

www.LNE-AgriEarth.com

+27 (0)861 888 008 | +27 (0)83 327 3237 (A/H)

LNE@LNE-AgriEarth.com

[@LNEAgriEarth](https://www.facebook.com/LNEAgriEarth)



CARRARO

Spare Parts
Authorized Dealer

PARAMOUNT EQUIPMENT

We are level 1 B-BBEE company with a National Footprint and SADC reach

We are a diversified company with extended offerings in the Manufacture and Supply of Machines for the mining and related industry.

We have been trading since 2013. We offer Professional Engineering Services to industry. We strive for innovation and utilize the best material available in the market and offer the best fit solutions for our customers. Understanding our customer requirements is important. We source and provide them with best engineering solutions that are suitable for their operations. Paramount has recently partnered with the manufacturer, Revathi Equipment Limited (REL), an India based company to service the African continent. Paramount Equipment is the Authorized REL Dealer and Distributor

INTRODUCING:



**AUTONOMOUS
MINING THE
WAY FORWARD**



REL (India) designs and builds a varied range of blast hole drills for the mining and construction industry, incepted in the year 1977 as Revathi CP Equipment limited the Indian Unit of Chicago Pneumatics USA. Since its inception REL has manufactured more than 2000 drills of different capacities, delivering quality holes drilled safely and accurately at the lowest cost.

Our commitment to continuous improvement and innovation drives our ongoing and growing African presence. Please feel free to contact us for more information about our industry-leading products and services.

Your Partner in Mining Equipment Solutions

Gauteng
32 Van Buuren Road
Hans Merensky Office Park
Bedfordview, JHB
Tel: 010 007 3258

Mpumalanga
2 Watt Street
Industrial Area
Middelburg
Tel: 010 007 3109

Northern Cape
Rietbok Street, Office 5
NS&R Building, Kathu
Tel: 082 902 6376 /
072 849 6970

Botswana
Plot 454
Jwaneng
Tel: 00 27 10 007 3258 /
+267 71 968 840



Contact us today on sales@paramounttracks.com or visit us online at www.paramounttracks.com

Proud partner of:





Paramount Tracks

Bedfordview
Head Office
32 Van Buuren Rd
Hans Merensky Office Park
Tel: 010 007 3258

Middelburg
2 Watt Street • Industrial Area
Middelburg
Mpumalanga
Tel: 010 007 3109

Northern Cape
Rietbok Street • Office 5
NS&K Building • Kathu
Tel: 082 902 6376
Tel: 072 849 6970

Botswana (Pty) Ltd
Plot 454
Jwaneng
Tel: 00 27 10 007 3258
Tel: +267 71 968 840

Postal Address: South Africa
P.O.Box 11735 • Aerorand
1070 • South Africa

Postal Address: Botswana
P.O.Box 2233 • Jwaneng
Botswana



Email: sales@paramounttracks.com
Website: www.paramounttracks.com

Paramount Tracks is a diversified trading company that provides professional engineering services to the mining, plant and construction industries. We are a 100% black owned company and have presence in Johannesburg, Middelburg, Limpopo, Northern Cape and Botswana. We offer specialised services pertaining to the supply of all types of earthmoving undercarriage, GET, along with offering a repair solution for all bucket repairs, bowels, blade repairs, track frames etc.

We have the infrastructure to service large mining and construction companies. We supply a vast range of undercarriage that is suitable for all types of drill rigs and crawler equipment, along with wear parts that are suitable for most GET applications. We own a Track Workshop and Engineering Facility in Middelburg, Mpumalanga region & have developed strong relationships with the European undercarriage manufacturer ITM which is located in Italy. We currently service high end corporate clients in South Africa and have been appointed as the official ITM distributor for South Africa and Botswana through our Paramount Tracks Botswana entity. Paramount Tracks has been recognised as the official dealer of the Combi Wear Parts Ground Engaging Tools Range for South Africa who specialises in the manufacturing of this Swedish wear parts range and aims to offer our customers a premium product. We are the appointed Hardox Wearparts Centre in Middelburg, who is a member of SSAB and offer the following services:

- Cutting • Welding • Machining • Bending • Post-treatment • Perforation etc.

We aim to provide high productivity, along with low maintenance costs which is the core business for a Hardox Wearparts Centre.



THE OEM ALTERNATIVE

Our Vision

To be a regionally recognised professional engineering and technical services company dedicated to providing value added services to customers, from an engineering and supply of new undercarriage components perspective.. Paramount Tracks values are built on dedication, quality workmanship and excellent customer services that are based on sound engineering principles along with maintaining a safe and healthy working environment.

Our Mission

We undertake to uphold the following principles:
Quality parts and services
Develop and empower the community we operate within
To work to the highest quality standards possible
Shrive for continuous improvement

www.paramounttracks.com

WELL RESTED & READY



MANUFACTURERS, SUPPLIERS AND STOCKISTS OF:

**CUTTING EDGES | MOLD BOARD LINERS | GRADE BLADES
TIPS AND ADAPTORS | RIPPER SHANKS | END BITS**

WE MANUFACTURE, SUPPLY AND STOCK G.E.T. FOR:

**CAT | KOMATSU | VOLVO | HITACHI | BELL | LIEBHERR | JCB | CASE
TEREX | FURUKAWA | LIUGONG | SANY | SANYO | SHANTUI | FIAT**

WEARPACT ALSO OFFERS A SPECIALIST BUCKET REPAIR SERVICE

WEARPACT

☎ 011 421 4705 / 011 845 3234 / 011 845 3272

☎ 011 421 8761

✉ mwwrp@mweb.co.za

*MANUFACTURER'S NAMES, NUMBERS & DESCRIPTIONS ARE USED FOR REFERENCE PURPOSES ONLY. IT IS NOT IMPLIED THAT ANY PART LISTED IS THE PRODUCT OF THE MANUFACTURERS.

www.wearpact.co.za

WEICHAI

PRODUCT SUPPORT AT ITS BEST



RENTAL OPTIONS AVAILABLE



FAW Q8 Oils



A Caterpillar Brand

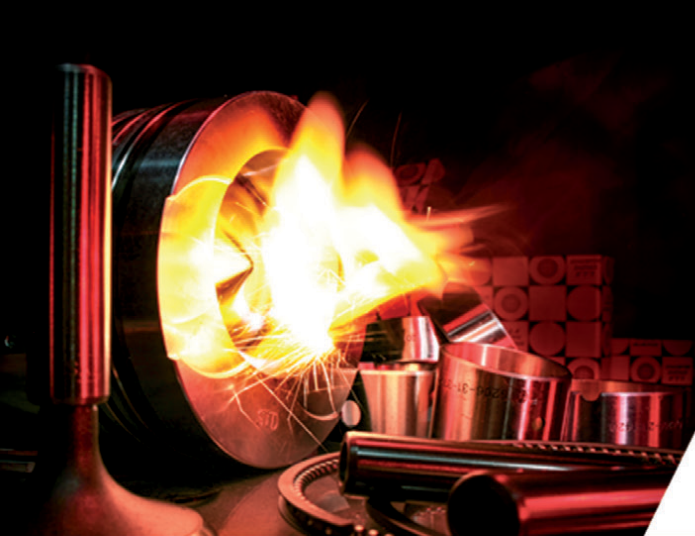
14 Buwbes Rd, Sebenza

English: Barry - 072 399 9817

Afrikaans: Arno - 065 040 2839

Zulu: Sonto - 061 564 1163

bm@semrsa.co.za



SHIN LI
TRADING ©



*We Specialise in
Japanese & Korean
Earthmoving Spares*

ENGINE SPARES

Liner Kits, Gasket Kits, Valves & Guides,
Water Pumps, Oil Pumps, Crank & Cam Shafts,
Engine Bearings & Bushings



Mitsubishi
Komatsu
Doosan
Nissan
Isuzu
Hino

HYDRAULIC PARTS

Kawasaki Pumps

New and Complete



Final Drives

20 Ton Excavator
Final Drive Parts
& Complete Units



Komatsu Gear Pumps

Transmission Pumps
Steering Pumps
Main Pumps



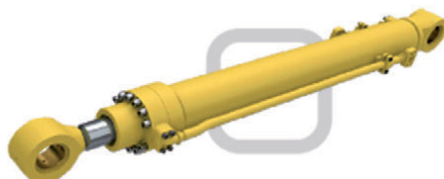
Kawasaki Rotating Groups

K3V and K5V Series
Inner Parts
Rotating Groups
Seal Kits



Komatsu Cylinders

Complete Cylinders
Seal Kits



WWW.SHINLITRADING.CO.ZA

Email:

sales@shinlitrading.co.za (Chris)
sales2@shinlitrading.co.za (Wimpie)
sales3@shinlitrading.co.za (Martin)
sales4@shinlitrading.co.za
sales5@shinlitrading.co.za (Steven)

Address: 67 High Road

Bredell A/H
Kempton Park
Tell: 011 396 1081
011 552 5900 /1/2
Fax: 086 666 2537



*Working hard,
so you don't have to.*

WWW.SHINLITRADING.CO.ZA

UNDERCARRIAGE

Track Links



Sprockets



Idlers



Track & Carrier



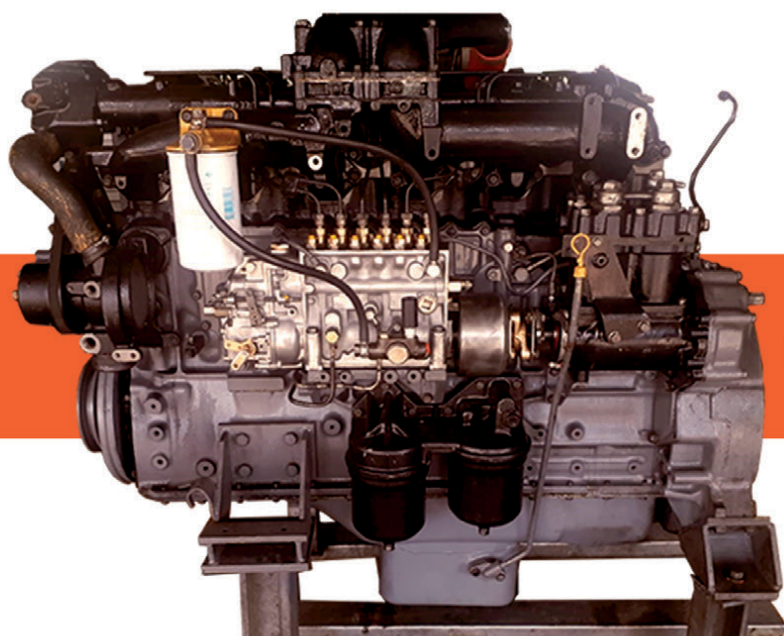
Rollers



Track Plates

Bolts & Nuts

**Genuine Hyundai
20 Ton Track Frames**



6D22T FOR SALE

Address: 67 High Road
Bredell A/H
Kempton Park
Tell: 011 396 1081
011 552 5900 /1/2
Fax: 086 666 2537

Scan the QR Code
to see our website:



**SHIN LI
TRADING** ©

VENDEL EQUIPMENT SALES (PTY) LTD

T/A | ASSOCIATED EQUIPMENT

TEL: (011) 801-4911/2/3 Website: www.associatedequipment.co.za Plot 92 Indaba Lane- off Beyers Naude Road
 FAX: (011) 801-4914 Rietfontein (Roodepoort), GAUTENG
 E-mail: vendels@mweb.co.za E-Mail: associatedloraine@xnet.co.za

Contact: ANTON - Cell: 082 923 5397/ JAAP - Cell: 082 892 1327 / CHRIS - Cell: 083 626 5588
 LORAIN CELL: 076 021 4344 / For Tyres contact Loraine at (011) 801 - 4911/2/3 or on 076 021 4344
 GPS Co-ordinates - S26°3'53.343 - E27°52'37.453



2010 Caterpillar D6T Dozer with Ripper
 Rebuild engine new undercarriage



1 x Caterpillar 140H Motor Grader
 with Ripper, Refurbished



4 x Caterpillar 140G Motor Graders
 with Rippers



1 x Komatsu GD650 Motor Grader
 with ripper
 1 x Cheng Gong MG1320B
 with Ripper



1 x 2014 Caterpillar 320D Excavator
 1 x 2005 Caterpillar 330C Excavator
 1 x 2015 Hitachi ZX210W
 Wheel Excavator



1 x 2013 Komatsu PC200-8 Excavators
 new undercarriage
 1 x 2012 Komatsu PC200-8 Excavator
 1 x 2011 Komatsu PC220-8 Excavator



1 x 2010 Caterpillar 302.5C
 Mini Excavator



1 x 2016 Doosan DX62R-3 Excavator
 Piped for Hammer
 1100 Hours



1 x 2007 Caterpillar 323D Excavator
 1 x 2008 Caterpillar 320D Excavator



1 x 2013 Wacker 50Z3
 Excavator



2 x 2014/2013 JCB 456
 Front end Loaders
 1 x Cat 246C Skid Steer Loader



2 x 2013 Cat 950H F.E.L'S
 1 x 2014 Cat 980H F.E.L
 2 x 2011 Bell 1806E F.E.L



1 x 2013 Cat 938K Front end Loaders
 2 x 2014 Sem 668C Front end Loaders



1 x Hamm 3411
 Padfoot Roller
 2 x 2015/2014 Hamm 3411
 Smooth Drum Rollers



1 x 2014 Bomag BW212D-40 SD Roller
 1 x 2007 Bomag BW212 S D Roller
 1 x Bomag BW212-40 SD Roller



1 x 2011 Hamm 3520 Smooth Drum Rollers
 1 x Bomag BW219 Smooth Drum Roller



VENDEL EQUIPMENT SALES (PTY) LTD

T/A | ASSOCIATED EQUIPMENT

TEL: (011) 801-4911/2/3 Website: www.associatedequipment.co.za Plot 92 Indaba Lane- off Beyers Naude Road
 Rietfontein (Roodepoort), GAUTENG
 FAX: (011) 801-4914
 E-mail: vendels@mweb.co.za E-Mail: associatedloraine@xnet.co.za

Contact: ANTON - Cell: 082 923 5397/ JAAP - Cell: 082 892 1327 / CHRIS - Cell: 083 626 5588
 LORAIN CELL: 076 021 4344 / For Tyres contact Loraine at (011) 801 - 4911/2/3 or on 076 021 4344
 GPS Co-ordinates - S26°3'53.343 - E27°52'37.453



1 x Ingersoll-Rand 27 Ton PTR



1 x Hamm HD70 DDV Roller



1 x 2006 Caterpillar CB434D
Smooth Drum Roller



1 x Dynapac CS142N 3 Point
Steel drum Roller - 13 Ton



3 x Benford TV1200 DDV Rollers
1 x 2011 Ammann AV12-2 DDV Roller
1 x 2006 Bomag BW120AD-4 DDVR



2 x 2019 NEW / UNUSED Manitou /
Terex 844S TLB's with 4 in one Bucket



3 x 2020 NEW / UNUSED Case 770 EX
Magnum TLB's



1 x NEW / UNUSED Pcat TW30
3 Ton Forklift



2 x 2013 Caterpillar 428F 4x4 TLB
2 x 2014 Caterpillar 428F 4x4 TLB
1 x Caterpillar 420D 4x4 TLB
1 x Caterpillar 428E 4x4 TLB



4 x Etnyre K Chip Spreaders
Mechanical and Fully Electronic
Refurbished



1 x Gallion 10 ton Crane
2 x Ford Mobilift
1 x Grid roller



1 x 2014 JCB 535-140 Telehandler
1 x 2014 JCB 535-125 Telehandlers
2 x 2016/15 JCB 540-140 Telehandlers
1 x 2014 JCB 540-170 Telehandler



1 x 2016 F. A. W 10M³ Trucks -
1 x 3 Axle Hendred Goosneck trailer



2 x 2018 Bell Kamaz 65222
6x6 Tippers 12m³
Demos 3000 and 18000 KM



1 x 2004 Terex TA30 6x6
Dumptruck



1 x Merc 1113
Cranetruck



17.5x25 Rock Grip L4, 17.5x25 L3,
12.5x80x18, 1400x24L3, 16.9x28
All New Tyres



1 x Discharged Bin Trailer
1 x Tecon Grid Roller
1 x Xstrata Swing Bin



1 x Bell 2306D Tow Tractor
2 x Bell 2806 Tow Tractors



1 x 5 Sided impact roller
1 x Spinnekop Broom
1 x Lighting plant on trailer
1 x TLB Hydraulic hammer

GPS CO-ORDIANATES: S26°3'56.343 - E37°52'37.453

www.associatedequipment.co.za / www.vendelequipmentsales.co.za



AFRICA'S LEADING EARTHMOVING EQUIPMENT & PARTS DEALER

www.blcplant.com ☎ +27 11 555 2000 ✉ info@blcplant.com

PLANT

PARTS

RENTAL



**OVER 600
MACHINES
IN STOCK**



HYDRAULIC EXCAVATORS

CAT 320D, 325D, 329D, 330D, 336D, 345D,
349D, 365C, 374D/F, 385C, 390D/F



DOZERS

CAT D6R, D6T, D7R, D8R, D9R/T, D10T, D11T



RIGID DUMP TRUCKS

25 X CAT 777D, 5 X 777F



MOTOR GRADERS

CAT 140G, 140H, 140K, 14H, 16G, 120H, 14M,
16H, 16M



ARTICULATED TRUCKS

BELL B40D, B35D



ARTICULATED TRUCKS

CAT 725, 730, 740, 740B, 745C



CAT EXCAVATOR

323D- 2017



CAT GRADER

120H - 1998



FRONT END LOADER

CAT 992 K



TRACTOR LOADER BACKHOES

CAT 428F, 428F2, 426F, 450E



COMPACTION ROLLERS

BOMAG BW212-3, BW213D, BW219-3
CAT CS533, CP 533E, CS563E, CS76



FRONT END LOADERS

CAT 950H, 950GC, 966H, 962H, 972H,
980H, 988G, 992K

**LARGEST STOCK OF
PARTS** IN THE
SOUTHERN HEMISPHERE

Service exchange units available.

6 MONTHS WARRANTY
on refurbished components.

View all our available
stock on our website
www.blcplant.com



BLC Plant purchases earthmoving equipment for stock, rebuilds it as required in the fully equipped on-site workshops and then sells it to users in various industries. We focus on delivering products which meet customer specifications, offer buyers a viable alternative to new equipment and provide excellent after sales service and support.

PLANT

View all our available stock on our website
www.blcplant.co.za

PLANT - STOCK READY TO GO



CAT 777D
2012



CAT 924G
2006



TADANO
TR250M-4 CRANE



TADANO
TR250-5 CRANE



CAT MOTOR GRADER
120H



ENTRE CHIP SPREADER



CAT ROLLER
CS-553



CAT RM300
2009

TRUCKS - STOCK READY TO GO



MERC-BENZ ACTROS 4140 WATER TANKER



MERC-BENZ ACTROS 3331 ROCK BIN 2008 X 3



VOLVO 18000L WATER TANKER
(2012) 5 AVAILABLE



MAN 26-280 TIPPER 10m3
(2017) 2 AVAILABLE

Call us now

+27 (0)11 555 2000

or visit

www.blcplant.com

for our latest stock.



Largest stock of parts in the southern hemisphere. Service exchange units available.

www.blcplant.com

+27 11 555 2000

info@blcplant.com

Corner Wynberg Road and 2nd Avenue, Kew

PARTS



6 MONTHS WARRANTY on refurbished components



CATERPILLAR
Dozer Engines



CATERPILLAR
Dozer Final Drives



CATERPILLAR
Grader Transmissions



CATERPILLAR
Loader Axles



CATERPILLAR
Loader Transmissions



CATERPILLAR
Grader Axles



CATERPILLAR
Transfer Box



CATERPILLAR
Off Highway Transmissions

Call us now +27 (0)11 555 2000 or visit www.blcplant.com for our latest stock.



● Seals ● Bearings ● Hydraulic Components

We have moved to 504 Pretoria Road, Fairleads, Benoni

Tel: +27 11 420 1003 | Roger: +27 79 493 4486 | Damian: +27 79 897 9822

Seals:

- Earth moving cylinder kits
- Hydraulic seals
- Pneumatic seals
- Oil seal
- O rings
- D rings
- Torric/duo cone/face seals

Bearings:

- Spherical plain bearings
- Spherical roller bearings
- Deep groove ball bearings
- Thrust bearings
- Taper roller bearing
- Needle bearings

Plastic engineering:

- Custom seal manufacturing
- Valve seats
- Bellows
- PTFE balls
- Pressure pads
- Sheeve wheels
- Rail slides

Brands we stock:



TRELLEBORG



SAKAGAMI

Brands we stock:

TIMKEN

FAG

NTN

SKF

Plastics we stock/machine:

- Nylon
- PTFE
- Bronze impregnated PTFE
- Carbon impregnated PTFE
- Glass impregnated PTFE
- Tufnol
- Polyurethane
- All other engineering plastics

Components/Miscellaneous:

- Pins
- Bushes
- Cylinder bolts/washers
- Hydraulic glands
- Custom pattern making
- Castings
- LED work lights
- Component remanufacturing and repair
- Torque rod bushes
- Bellows
- Custom sourcing and supply of goods

Through our network we can also offer a wide range of service exchange hydraulic cylinders



AFFORDABLE ☒ RELIABLE ☒ TRUSTED ☒

WWW.DURASALES.CO.ZA



Visit our website on www.durasales.co.za for updated stock. T&C APPLY

JHB SHOWROOM
46 Viewpoint Road
Bartlett, Boksburg

CPT SHOWROOM
30 Kiaat Street
Kraaifontein, WC

Contact our showrooms:
Gauteng: +27 (0) 10 823 5478
Western Cape: +27 (0) 21 212 0210

JHB SALES TEAM:
Coenie
Prinsloo
Jerry
Curtis
Jp

CPT SALES TEAM:
Pottie
Gerrie





AFFORDABLE ✓ **RELIABLE** ✓ **TRUSTED** ✓

WWW.DURASALES.CO.ZA



✓ **2008 CAT D6T**
13791 HOURS



✓ **2014 CAT 140K**
4550 HOURS, FULLY REFURBISHED



✓ **NEW 1000L DIESEL BOWSER**



✓ **NEW AMMAN ARS122**



✓ **1999 BELL B25C**
23,000L WATERTANKER



✓ **2019 LOVOL FL958G-II**
355.7 HOURS



✓ **1998 BELL B25C 6X6**
FULLY REFURBISHED



✓ **2011 BELL B50D**
9900 HOURS



✓ **2003 GROVE TR250 CRANE**
29915 HOURS



✓ **NEW MST M542**



✓ **2007 MERCEDES BENZ**
8875 HOURS



✓ **NEW LOVOL FR330D**

Visit our NEW website on www.durasales.co.za for updated stock.

T&C APPLY

JHB SHOWROOM:
46 Viewpoint Road
Bartlett, Boksburg

CPT SHOWROOM:
30 Klaat Street
Kraaifontein, WC.

Contact our showrooms:

Gauteng: +27 (0) 10 823 5478
Western Cape: +27 (0) 21 212 0210

JHB SALES TEAM:

Coenie
Prinsloo
Jerry
Curtis
Jp

CPT SALES TEAM:

Pottie
Gerrie





**We are stripping earthmoving
equipment for spares.**

GRADERS



CAT 140 G/H
CAT 16 G
BELL 872 D

ROLLERS



STA VV 900
BW 211 D-3
BW 212 D-2
BW 212 D-2A

DUMPERS



BELL B17 B
BELL B20 B/C/D
BELL B35 D
KOMATSU HM 400-1
CAT 740

EXCAVATORS



SUMITOMO SH 200-1/3
SUMITOMO SH 450-3
CAT 320 LME
CAT 324
CAT 330 B
CAT 375 L
CAT 385-B/C
KOMATSU PC 220-6
KOMATSU PC 200-7
KOMATSU PC 300-7
BELL KATO H 820-11
BELL KATO HD 1023

WHEEL LOADERS



CAT 924 G
CAT 962 G
FURUKAWA FL170/230/330
KOMATSU WA 120-3
KOMATSU WA 250-3/5
KOMATSU WA 280-3
KOMATSU WA 320-3
KOMATSU WA 470-5
KAWASAKI Z85-IV
KAWASAKI Z 90-IV

DOZERS



KOMATSU D 65-8
KOMATSU D 85-18/21
KOMATSU D 275-2/5
KOMATSU D 375-2/3/5

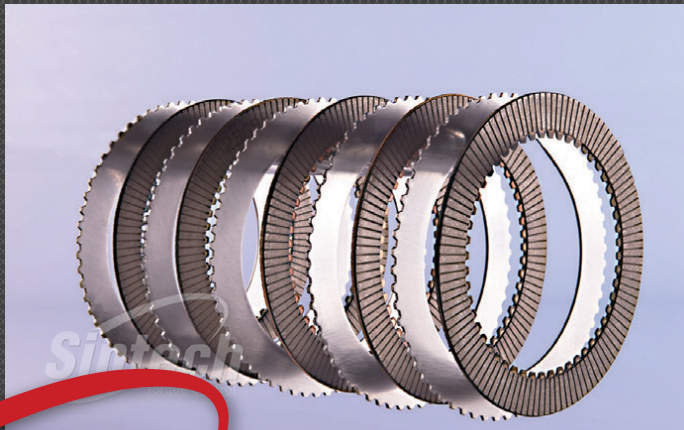
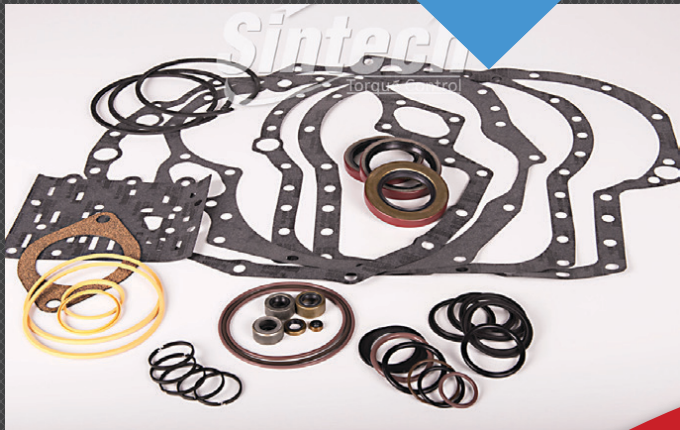
Contact us on: Magda: +27 (0) 72 056 3341

email: admin@duraparts.co.za
WWW.DURASALES.CO.ZA



CLARK DANA
AXLE & BRAKE

CLARK DANA
TRANSMISSIONS



Sintech

ORIGINAL
EQUIPMENT
SUPPLIER

www.sintech.co.za

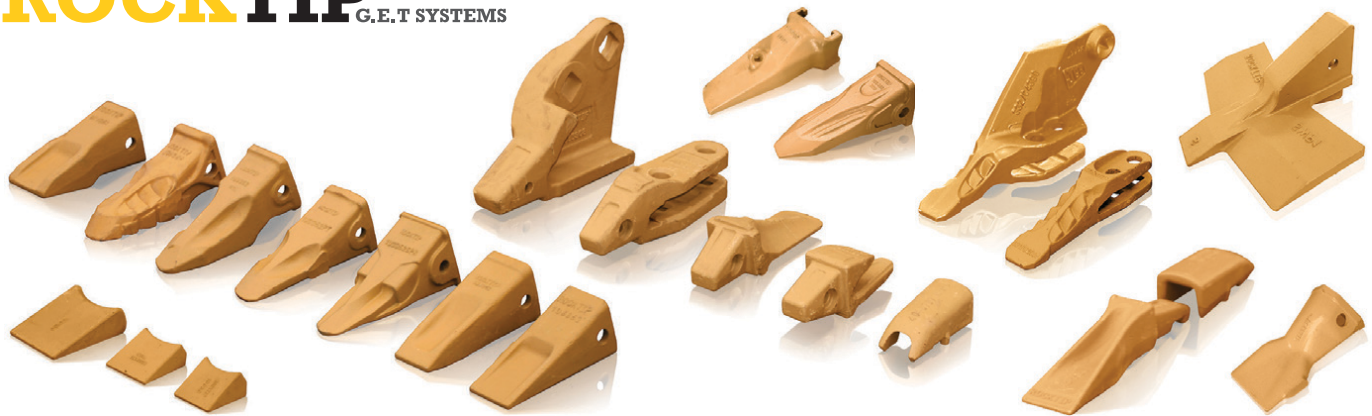
+27 (0)11 823 2359



SPEC-CAST WEAR PARTS
Trusted to deliver

Spec-Cast Wear Parts (PTY) Ltd is a leading manufacturer specializing in the supply of ground engaging tools, undercarriage, undercarriage components, track frames, suspension group replacement parts, agricultural wear parts, general castings and forgings for the construction, mining and agricultural industries.

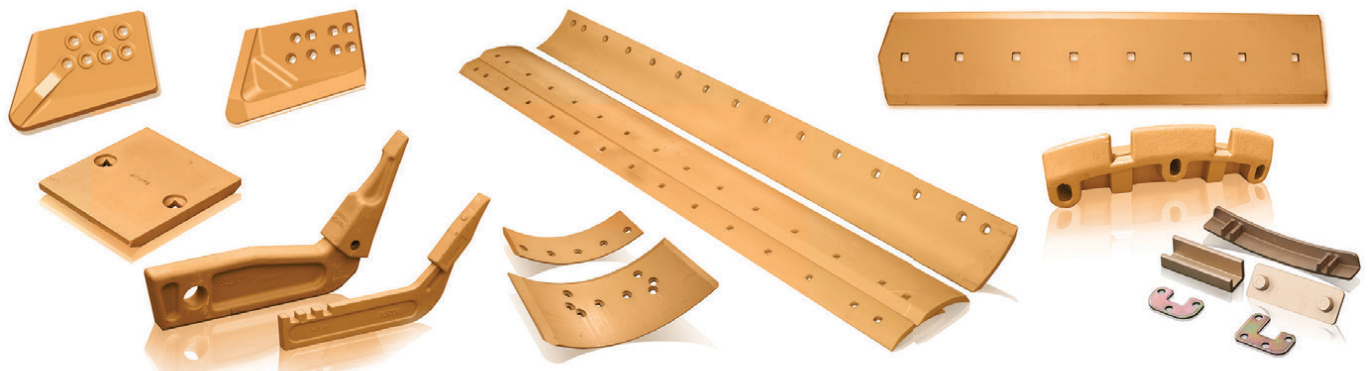
ROCKTIP G.E.T SYSTEMS



Teeth and Adapters for Various Models



Wear Protection



Blades, Cutting Edges, End Bits and Grader Wear Parts

Manufacturers of G.E.T to fit:

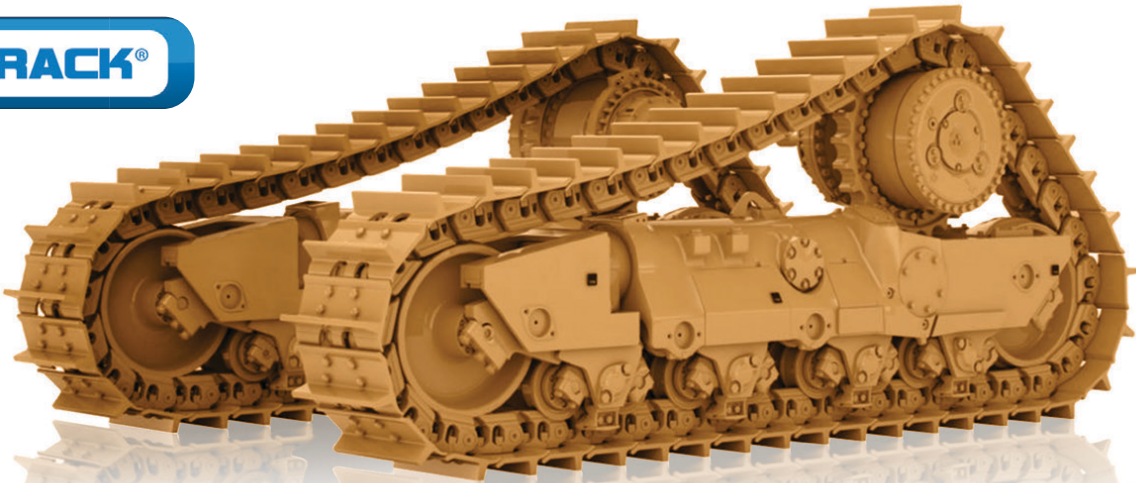
CATERPILLAR	TEREX	ESCO	LIEBHERR	H & L	BOBCAT
KOMATSU	JCB	HYUNDAI	DAEWOO	BUCYRUS	MTG
NEW HOLLAND	MASSEY FERGUSON	CASE	BOFOR	LIUGONG	KUBOTA

Manufacturer's names, numbers, symbols and descriptions are used for reference purposes only and it is not implied that any part listed above is the product of the manufacturers.

Spec-Cast offers a wide range of undercarriage components covering the entire range of modern crawler machine applications in the construction, mining, utility, forestry, road, building, and agricultural industries. Covering all makes and models of machines, from drilling machines to hydraulic excavators, as well as dozers, auxiliary machines, conveyors and customised solutions.



SPEC-CAST WEAR PARTS
Trusted to deliver



Spec-Cast Wear Parts is an authorized Dealer for ITM and VEMATrack undercarriage parts.
Call our undercarriage experts today!



Chains



Rollers



Sprockets



Idlers



Shoes



Rubber Tracks

CATERPILLAR	HITACHI	KOMATSU	LIEBHERR
6018 RH90	EX1200	PC1250	R9100
6030 RH120E	EX1800/1900	PC2000	R9150
6040/50	EX2500/2600	PC3000	R9250
RH170/200	EX3500/3600	PC4000	R9350
6060 - RH340	EX5500/5600	PC5500	R9400
7495 - 495HRII	EX8000	D375	R995
D8, D9, 10 & D11		D475	R996
			R9800

Our track workshop is available to support all your undercarriage needs

Turning of Pins & Bushes
Remove/Fit Track Shoes

Re-Build Idlers
Re-Shell Rollers

Re-Strip Grouser Shoes
Re-Rim Sprockets

With branches and distributors located in prime areas throughout South Africa, as well as several African countries, Spec-Cast is able to provide the Earthmoving, Mining and Agricultural industries with an efficient, cost effective supply and distribution network.

JHB HEAD OFFICE

+27 11 396 1717/13
aimee@spec-cast.co.za
11 Elgin Street, Pomona,
Kempston Park, Johannesburg

www.spec-cast.co.za

MIDDELBURG
+27 13 813 1413
middelburg@spec-cast.co.za
6 Jaspis Street
Middelburg, Mpumalanga

NORTHERN CAPE
+27 53 010 1304
northerncape@spec-cast.co.za
Section C3, Portion of Farm Waterraad
Kathu, Northern Cape

Follow us:

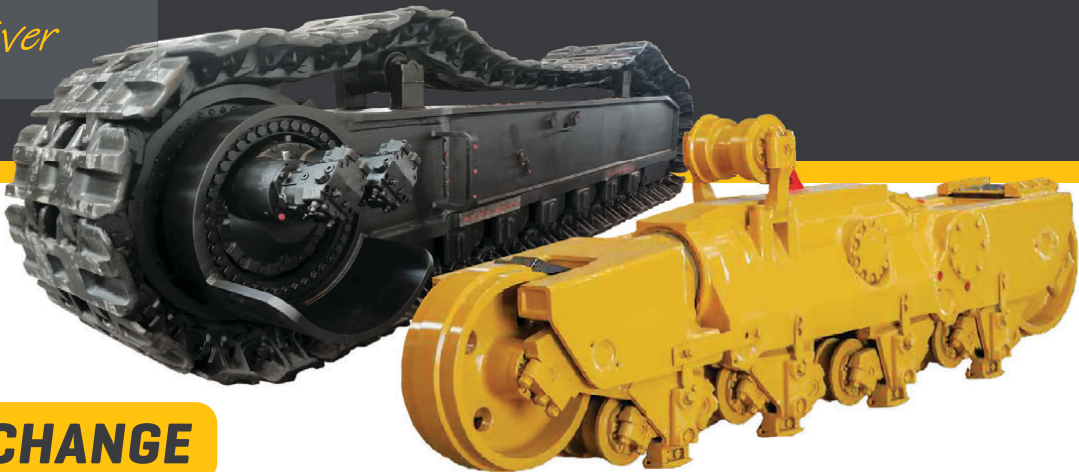




SPEC-CAST WEAR PARTS

Trusted to deliver

CATERPILLAR & KOMATSU DOZER & EXCAVATOR TRACK FRAMES



SERVICE EXCHANGE

Our Service Exchange Program provides you with a high-quality track frame rebuild solution. All PEX units are like-new, quality track frames that is on hand for delivery to keep your machine productive and keep your costs minimal.

Spec-Cast’s PEX units gives you the advantage of an immediate trade-out of critical components that allows your machine to get back to work as quickly as possible.

TRACK FRAME REPAIRS

Spec-Cast offers partial repairs and full track frame rebuilds, using only quality approved parts including some OEM components that is critical to the longevity of the frame. Strict adherence to our QCP [Quality Control Procedures] provides peace of mind and builds trust in the Spec-Cast Brand. Spec-Cast’s Track Frame Repairs covers a wide range of crawler machines types such as dozers, excavators and shovels across multiple manufacturers and applications.

TRACK FRAME COMPONENTS

Caterpillar and Komatsu Dozer aftermarket track frame components of the highest quality and standard are stocked for immediate supply.

- Bogie Pins and Bogie Pads
- Roller and Idler Caps
- Track Guides
- Equalizer Bars and repair components
- Trunnion’s and repair components
- Bushings and Seals
- Minor Bogies



JHB HEAD OFFICE

+27 11 396 1717/13
undercarriage@spec-cast.co.za
11 Elgin Street, Pomona,
Kempton Park, Johannesburg

www.spec-cast.co.za

MIDDELBURG
+27 13 813 1413
middelburg@spec-cast.co.za
6 Jaspis Street
Middelburg, Mpumalanga

NORTHERN CAPE
+27 53 010 1304
northerncape@spec-cast.co.za
Section C3, Portion of Farm Waterraad
Kathu, Northern Cape

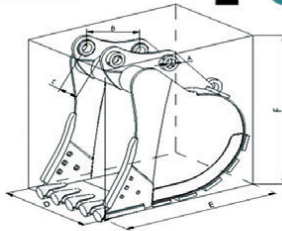
Follow us:



**EXPERIENCE
COMPETITIVE
COMPETENT**

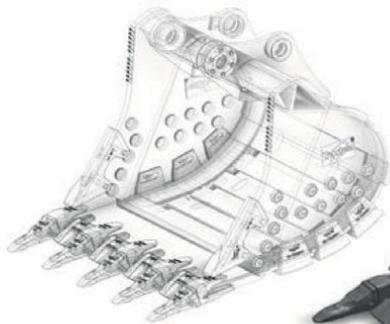
TJB Earthmoving Parts & Buying (Pty) Ltd

TJB
Buckets & Fabrication



TJB BUCKETS AND FABRICATION is one of
TJB EATHMOVING PARTS AND BUYING (PTY) LTD
sister companies.

We identified a gap in the market due to the
extreme costs and lead times offered by leading
"BIG" companies in the industry that seem to almost
control the market.



TEAM / FAMILY

An on-site mechanical, welding
and metallurgical engineer 3D CAD Modelling and design,
drawing and detailing Boilermakers and assistants with specific
product fabrication knowledge SAIW 6G qualified SMAW, GTAW
and GMAW welders All Cactus directors are hands on and directly
involved in the business

SERVICES

- Brand new buckets and grabs
- ANY form of fabrication
- Refurbishments
- Used / second hand

FACILITIES & EQUIPMENT

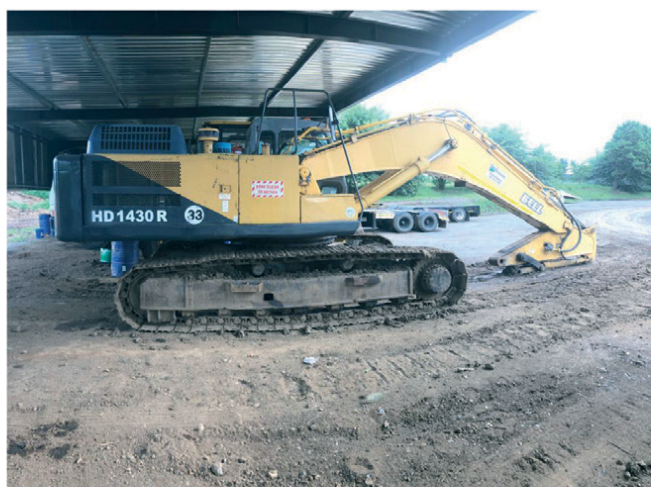
2 x 500m² workshop, under roof with a 10t and 20t
overhead crane situated in Boksburg State of the art
Lincoln GTAW, GMAW and MMAW welding equipment
Hydraulic equipment for the testing of hydraulics
Welding positioner and welding manipulator
Welding gas emission control equipment

"TJB Buckets and Fabrications" invites YOU to join our family where honesty, transparency, trust, pride and ethics
are the platform in which we build our relationships with our customers. Test us - Please send us the opportunity for
us to prove ourselves and allow yourselves to be amazed!!!

+27 71 154 3786 brad@tjbearthmoving.co.za www.tjbearthmoving.co.za



**1 x HYUNDAI 300LC-9S
Excavator**



**BELL/KATO HD1430R
8570 Hours**



**LOWBED
Two axle trailer**



**KOMATSU WA380-6
F.E.L.**



Contact **Stuart McKenzie** for more details:

Tel: 033 212 2181

Cell: 082 558 7901

Email: sjm@mckenzieplant.co.za

www.mckenzieplanthire.co.za



You can now find us on facebook, go to www.facebook.com/mckenzieplanthire



▲ HYUNDAI HITACHI VOLVO



SHANTUI



KOBELCO



CASE



BELL

HIDROMEK



THE ALTERNATIVE SUPPLIER FOR DOOSAN, HYUNDAI, VOLVO AND OTHER BRANDS OF EXCAVATOR PARTS AND COMPONENTS IN SOUTH AFRICA.

**All manufacturers names, numbers, symbols and pictures are for reference only. It does not imply that any of the parts are the product of these manufacturers.*



TEL: +27(0)11 967 0055 | TEL: +27 (0)11 967 0060 | FAX: +27(0)86 606 4597 | SALES@MIDPLANT.COM

ADDRESS: 273 3RD AVENUE, BREDELL, KEMPTON PARK | WWW.MIDPLANT.COM





A Part of ►Torre Industries

CONTACT US

T: +27 10 001 9200

T: +27 11 392 7533

F: +27 11 392 7590

A: 11 AVALON ROAD, WESTLAKE VIEW
EXT 11, MODDERFONTEIN, GAUTENG 1609
P: PO BOX 75600 GARDENVIEW, 2047

YOUR FIRST CHOICE SUPPLIER

**TGS®™ supplies
CTP® Parts for
your Earthmoving
and Mining
Machinery**



**Find Quality CAT™ Spares at
Tractor & Grader Supplies**

info@tags.co.za

We have selected the finest suppliers around the globe to bring to your doorstep only the finest quality products that are available. TGS®™ also believes in consistency of supply so what you get today will be the same as yesterday and will be the same tomorrow.

TGS®™ has an exclusive partnership with CTP®, a brand recognized worldwide as a manufacturer and supplier of high quality parts for the full line of Caterpillar®.

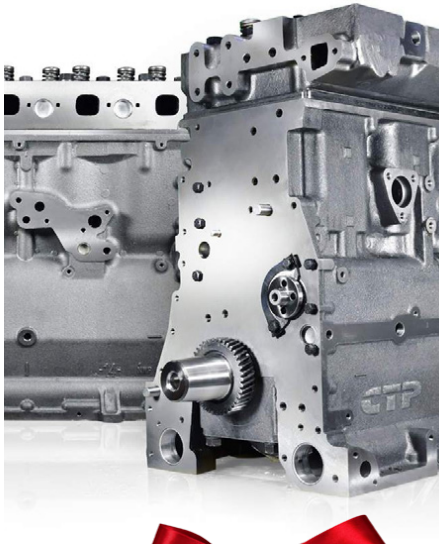
WWW.TAGS.CO.ZA



YOUR FIRST CHOICE SUPPLIER

WITHIN OUR CAT™ SPARES CATALOGUE THERE ARE VARIOUS RANGES THAT WE CAN OFFER:

info@tags.co.za



• **Ground engaging range** – this includes ripper shanks, segments, teeth, end bits and bulldozer blades.

• **Engine product range** – this includes pre-combustion chambers, water pumps, valve guides, v-belts, oil filters, lift pumps, manifolds, head gaskets, heat shields, engine oil pumps, engine mounts, cylinder heads, crankshafts and a great deal more.

• **Undercarriage range** – this includes track adjustors, track shoes, rubber tracks, sprockets, idlers, bogies, link assembly and rollers.



"We also have quite an extensive miscellaneous range, which caters to the likes of air compressors, mufflers, friction discs, alternators, oil seals, ferrules, beaded gaskets, fuel injection systems, hydraulic barrels and pistons, hydraulic hoses, hydraulic pistons and a great deal more."

In addition to our spares and parts for Caterpillar® machinery, our parts and spares are also ideal for other makes of earth moving equipment, such as John Deere®, Cummins®, Perkins®, Komatsu® and Yanmar®. When purchasing spares from us, you are guaranteed access to a top-quality range of products and competitive rates. You will find that our team members are all knowledgeable and experienced in the field and as a result, you can acquire professional advice and guidance, as required. We take great pride in the fact that we are the largest supplier of CTP® quality spares and parts in Africa, and recognise that our business has grown exponentially since it was founded in 1994.



WWW.TAGS.CO.ZA

DOZER

EARTHMOVING



**CAT 834H WHEEL DOZER
FOR SALE**



**CAT 834K WHEEL DOZER
FOR SALE**



**CAT 769C WATER TRUCK
FOR SALE**



**CAT 773E DUMP TRUCK
FOR SALE (VARIOUS)**



**CAT 777D DUMP TRUCK
FOR SALE**



**CAT 725 ADT
FOR SALE (VARIOUS)**



**CAT D10T TRACK FRAMES
(RECON) FOR SALE**



**CAT D10T SU BLADE
(RECON) FOR SALE**



**CAT 769D DUMP TRUCK
FOR PARTS (VARIOUS)**



**CAT 773D/E DUMP TRUCK
FOR PARTS (VARIOUS)**



**CAT 777D DUMP TRUCK
FOR PARTS (VARIOUS)**



**CAT 789C DUMP TRUCK
FOR PARTS (VARIOUS)**



**CAT 824G SERIES 1
WHEEL DOZER FOR PARTS**



**CAT 824G SERIES 2
WHEEL DOZER FOR PARTS**



**CAT 834H WHEEL DOZER
FOR PARTS (VARIOUS)**



**CAT D11R TRACK DOZER
FOR PARTS (VARIOUS)**



**CAT 725 ADT
FOR PARTS (VARIOUS)**



**CAT 730 ADT
FOR PARTS (VARIOUS)**



**CAT 740 ADT
FOR PARTS (VARIOUS)**



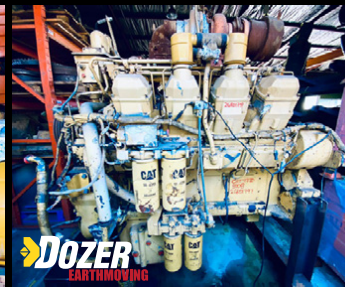
**KOMATSU HD785-5
DUMP TRUCK FOR PARTS (VARIOUS)**



**CAT 3406C 824G SPEC
ENGINE FOR SALE**



**CAT C18 834H/988H SPEC
ENGINE FOR SALE**



**CAT 3508 777D SPEC
ENGINE FOR SALE**



**CUMMINS QSK45
ENGINE FOR SALE**



**CAT 773E/777F CAB (RECON)
ON EXCHANGE**



**CAT D10T/D11T CAB (RECON)
ON EXCHANGE**



**CAT 785D/789D CAB (RECON)
ON EXCHANGE**



**LIEBHERR R9100 CAB
FOR SALE**



**LIEBHERR R9100 EXCAVATOR
FOR PARTS**



**LIEBHERR R9100 BOOM
FOR SALE**



**LIEBHERR R9100 STICK
FOR SALE**



**LIEBHERR R9100 BUCKET
FOR SALE**



**LIEBHERR R9350 EXCAVATOR
FOR PARTS (VARIOUS)**



**LIEBHERR R9350 BOOM
FOR SALE**



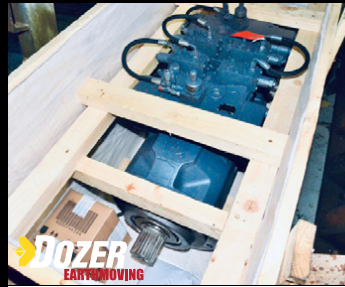
**LIEBHERR R9350 STICK
FOR SALE**



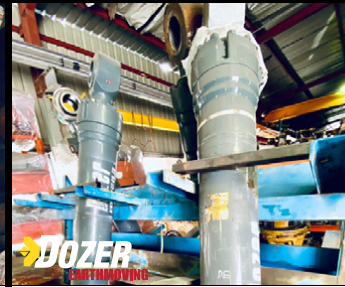
**LIEBHERR R9350 BUCKET
FOR SALE**



**LIEBHERR R9100 HOIST CYLINDERS
FOR SALE**



**LIEBHERR R9350 MAIN PUMP & ALL PUMPS
GOOD USED/REMAN FOR SALE (VARIOUS)**



**LIEBHERR R9350 STICK CYLINDERS (ALL)
GOOD USED/REMAN FOR SALE (VARIOUS)**



**LIEBHERR R9350 FINAL DRIVES
FOR SALE (VARIOUS)**

T +27(0)11 452-1224 M +27(0)11 82 441-2895 E info@dozer.co.za W www.dozer.co.za



www.instagram.com/dozerearth



www.facebook.com/dozerparts



RHINO

Excavator Hammers cc

Reg. No. 2008/152815/21

SOLE DISTRIBUTORS FOR



IN AFRICA



**Rock Wheel
Cutter**



XCENTRIC RIPPER



DandA
SILENCE 1200V

**WE ALSO HIRE:
EXCAVATORS & TLB'S
WITH THE ABOVE
ATTACHMENTS**



RHINO

Earthmovers cc

BREAKING FOR SPARES

MACHINE & PARTS LISTING (PRICES ON APPLICATION)

- CAT 931C , CAT 330D
- VARIOUS 20 TONNE EXCAVATORS JS200, CAT320D ,CAT330D. (SOLD WITH OR WITHOUT PIPING)
- 14 000 ALUMINUM WATER TANK.

- JAW CRUSHER RUNNING ORDER
- KOMATSU PC400-6 AS A RUNNER OR FOR SPARES.
- 2 X JCB 3CX FOR SPARES.
- KOMATSU DOZER 375-5, 375-3 TRANSMISSION AND ENGINE IN GOOD CONDITION.

+27 74 922 2382 (Office Number) | Cell: 071 670 8707 | 082 887 8636
sales@rhinohammers.co.za | hire@phplant.co.za | cjago@global.co.za
www.rhinohammers.co.za | www.phplant.co.za

**TO ALL OUR CUSTOMERS, FRIENDS AND
FAMILY, WE WISH YOU THE VERY BEST
FOR THE FESTIVE SEASON**

Thank you for your loyal support in 2020



PTT

KEEPING YOUR PLANT IN MOTION

View our driveline component and parts catalogue @ pttech.co.za/product-catalogue or Contact us: Tel: 011 022 8570

GOOD USED EARTHMOVING PARTS AND EQUIPMENT

STM
MINING EQUIPMENT PTY(LTD)

Tel: (011)894-6192 / (011)894-3377
Fax: (011)894 7914
barney@stmmining.co.za
donovan@stmmining.co.za

Office Hrs: Mon-Fri 07h00-17h00



STM Mining Equipment (PTY) LTD was established in 2002 and has been supplying customers good second hand components and parts for earth moving machines in 2016 we started field service with technician's and recon components and repairing machines.

We supply goods to a wide range of industries such as construction, civil, plant hire, mining and farming industries and as far as Australia, America, Botswana, Zimbabwe and a lot of locally supplied customers to. We have been supplying good secondhand parts to the market since 2002.

OUR PRODUCTS & SERVICES

We supply second hand machines and good used parts for most makes of Earthmoving Equipment ie: Cat, Komatsu.

We buy second hand machines to strip for components and parts, dead or alive to keep in stock for customers. We have a repair shop where we do components and Repair machines for Customers.

**Engines | Engine Blocks | Sub Assemblies
Crankshafts | Cylinder heads | Engine Parts
Undercarriage | Frames & Body | Components
Portable Diesel Compressors**

PO Box 6456, Dunswart 1508, 40 Michelson RD. Westwood, Boksburg

www.stmmining.co.za



MARSAY EQUIPMENT
QUARRY | MINING | CONSTRUCTION

Marsay Equipment specialises in the buying, refurbishment and selling of good used construction, mining, stone crushing and transport equipment.

We operate throughout southern Africa, mainly the SADC region. We are based in Johannesburg South Africa and have been in business for 44 years.

TIM MARSAY +27 83 654 4248
PATRICK MARSAY +27 79 187 7937

tim@marsayequip.co.za
www.marsay.co.za



VOLVO EXCAVATOR



**CONDRA 20M WIDE
& 10T CAPACITY R575 000 + VAT**



**SIMESA10/22 TOWED
VIBRATING ROLLER**



**PILOT CRUSHTEC
GFH560
BELT FEEDER**



**TELSMITH 14 X 24
JAW CRUSHER ON HEAVY DUTY
SKID BASE WITH LOADING
HOPPER AND VGF**



**HADFILEDS 36X26
JAW CRUSHER
REBUILT**



**PUTZMEISTER BSA1409
TRAILER MOUNTED
CONCRETE PUMP**



**TELSMITH 10 X 21
JAW CRUSHER**



**VARIOUS MACNAY
ROAD BROOMS**



**1000L
WATER TRAILER**



**TELSMITH 10X21
JAW CRUSHER**



**200KVA
TRANSFORMER
525V TO380/220V**



**80 & 100T
SILOS**

EQUIPMENT VALUATIONS
DO YOU NEED AN ACCURATE
MARKET VALUE OF YOUR
USED EQUIPMENT?
PLEASE CONTACT US!



KDH Hydraulics specialize in the repair and supply of **Hydraulic pumps, Motors & Valve banks**

KDH
HYDRAULICS

Tel: (011)762-9001/2
Fax: 0867581303
Mobile A/H: 071 678 3746
Email: ricus@kdhhydraulics.co.za

Cnr Quellerie St & Randfontein Rd, Roodepoort, Johannesburg, Gauteng



EXCHANGE UNITS

KAWASAKI

REXROTH

K3V 280 DT
K3V 180 DT
K3V 112 DT
K3V 280 SH

A10V60
A20V60
A10V74
A10V71

LIEBHERR – A4VG71



VARIOUS VOLVO ADT HYDRAULIC PUMPS
VARIOUS SUNDSTRAND HYDROSTATIC PUMPS & MOTORS



Repairs on all of the following major brands

- Atlas Copco
- Bell Equipment
- Caterpillar
- Liebherr
- Doosan
- Hitachi
- Komatsu
- Sumitomo
- Kawasaki
- Sandvik
- Bobcat
- Powerscreen
- Terex
- Finlay
- Aard Mining Equipment
- GHH
- Case
- ASA-Lift
- John-Deere
- Volvo

We also supply Gear pumps and motors according to application specifications and requirements.

www.kdhhydraulics.co.za



LIUGONG

FULL LINE. FULL SUPPORT. FULL SATISFACTION.



Equipment and Spares



www.liugong.co.za - admin.za@burgersafrica.com

BURGERS EQUIPMENT & SPARES SA
JOHANNESBURG - HEAD OFFICE
80 POMONA ROAD
011 979 3636

CAPE TOWN
RUBICON CENTRE, SHIRAZ STR, UNIT 1 & 2
SAXENBURG PARK, BLACKHEATH
021 987 5666

POLOKWANE
C/O VELDSPAAT & ZURICH STREET,
B.A.T WAREHOUSE 4
015 298 8696

DOUGLAS
C/O LOCH ROPER & GIDDY STREET
053 298 1108



We are buying used machines, running and non running.

RAMM Parts
adriaan@rammparts.co.za
marc@rammparts.co.za

Adriaan 076 127 2977
Marc 072 530 7373
Rodney 073 103 9582



Komatsu PC220 for sale - Running



2006 Bell L2106D For sale, 12000 hours,
5 cube coal bucket included in price
R 550 000,00 + VAT



Komatsu PC270-7 for sale Running



Komatsu HM400-2 stripping for spares



Chieftain 1700 Powerscreen
Complete Rebuild in progress
For more info contact us



Volvo L180G Wheel Loader



Komatsu A375-5 stripping for spares



Kawasaki 85 Z5 stripping for spares



Volvo A35E stripping for spares



Buckets for sale , kawasaki Z85(new),
Hitachi 870, Volvo, Doosan



Volvo A35D stripping for spares



Bell B40 Runner

158 Watermeyer Street, Witbank

A close-up photograph of a lit sparkler against a dark background. The sparkler is positioned diagonally from the top left towards the bottom right. It emits a dense spray of bright orange and yellow sparks that radiate outwards, creating a starburst effect. The sparks vary in length and intensity, with some appearing as long, thin streaks and others as shorter, more concentrated bursts. The overall lighting is warm and festive, typical of a New Year's celebration.

earthbroker

your sourcing solution for new & used equipment & machinery

**Wishing all Our Customers
a Happy New Year**

**Looking forward to
working together for a
Prosperous & Successful
2021**

EMS

Earthmoving Machine Sales



Jason Ward
+27 83 412 1077
jason@sa-ems.co.za

Mark
+27 82 907 9081



5 X BOBCATS S130 AND S150
- +_5000 HOURS



1 X CAT 320D
2012 MODEL - 11000 HOURS



1 X 2010 CAT 416E
12 000 HOURS



1 X 2003 CAT 416D
11 000 HOURS

EMS

Earthmoving Machine Sales



Jason Ward
+27 83 412 1077
jason@sa-ems.co.za

Mark
+27 82 907 9081



1 X 2017 CAT 428F
2400 HOURS



1 X CAT 320D
2009 MODEL - 8700 HOURS



1 X KOMATSU PC300
8300 HOURS - 2012 MODEL



1 X MERLO TELEHANDLER
RK35.13 2005 MODEL - 5000 HOURS



1 X MANITOU TELEHANDLER
MT1840 - 6000 HOURS



1 X KOMATSU PC220
6200 HOURS - 2014 MODEL



1 X BOBCAT S650
2014 MODEL - 4000 HOURS

INDUSTRIAL PLANT SOLUTIONS

For all your...



ENGINES



3306DIT good used runner complete
C7 recon short block
3126 mechanical-good runner
C15 longblock-980H
3054C recon short block - 424d appl.
D8R 20R4277 core recon
C15-shortblock -freightliner
C4.4 tested with warranty

TRANSMISSION



926E Trans / D4D Trans
D3C Trans / D8R Trans
140G Trans

D10R Converter / D8T Converter
950E Converter / D8R Converter

FINAL DRIVES



D8R Recon
D6R Recon
Cat 330B Inspected
Cat330D Inspected
Cat 320D2 Inspected
Robex 180/210 like new

PUMPS



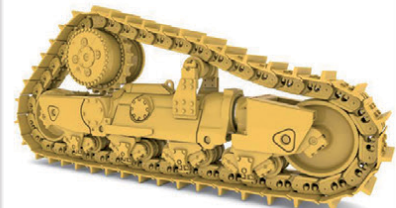
988F All pumps
D8R Diff Steer pump, D8N Tran,
C6.4Fuel, D8N Diff, Zaxis300.3
Hydraulic pump, 330B

BUCKETS



424D Rear bucket, 424D Front
bucket, 928F, 920, PC200-7 Bucket,
320B, 320C, 320C, 320B, 330B,

MISCELLANEOUS



C4.4 parts
D6R transmission ecm
3054e ecm
C7 radiator group new
D4G&D5G cooler new
988H pinion new
QX head,block,crank

New, used and reconditioned components - all makes.

If it's from your machine, we'll find a replacement!!

Contact Us:

✉: sales@ipsglobal.net

📘: facebook.com/IndustrialPlantSolutions



WhatsApp Message
+27 (0)82 405 3494

Inspections & Assessments Also Done

HPE Africa supplies & supports Hyundai construction equipment BST Plant Hire

Excavator plant hire specialists in the Rustenburg area - BST Plant Hire (Blue Sands Trading) – has extended its fleet to now include a robust 38 ton Hyundai tracked excavator, which is designed to cope efficiently in arduous conditions in the chrome sector.

“A priority for us at BST is a firm commitment to our customers to provide dependable machines that are able to deliver high-performance, with minimal downtime, in difficult environments,” explains JP Lourens, owner of BST Plant Hire. “Part of our success in a very competitive industry, is to ensure every machine is well-maintained and that professional operator training is provided to ensure optimum productivity and safety on site.

“The investment in quality used equipment is critical to ensure high productivity, fuel efficiency and low maintenance requirements.

“We also understand the value of working closely with equipment suppliers and our sound association with the HPE Africa team is testament to how important reliable support from the maintenance team is.

“In our plant selection process, we focus on matching the correct size machine to exact project requirements. We also consider budget restraints and make sure we find a reputable supplier with a proven track record, that provides dependable back-up support and an efficient spare parts service.

“In addition to the reliable service and support we receive from HPE Africa, I personally inspect our fleet two or three times a week, to ensure every machine is in pristine condition, to deliver the highest standards of delivery excellence and safety on site.”

Hyundai R380LC-9SH excavators have environmentally-friendly water-cooled, 4 cycle diesel, direct injection turbo-charged Tier 2 engines, with reduced emissions. These robust machines offer net power ratings of 195 kW @ 1,900 rpm, with an operating weight 38,450 kg and a maximum travel speed of 5 km/hr. The maximum digging depth is 6,820 mm, the maximum dumping height is 7,370 mm and the bucket capacity is 1.62 m³. According to HPE Africa's specialists, new design features of this series include the two-stage auto deceleration system and a highly-efficient economy mode that reduce fuel consumption and minimise the negative impact on the environment. Safety on site and improved operator comfort were other important factors in the design of these machines. For improved visibility, the spacious cab is fitted with a larger right-side one-piece glass and a reduced front window seam. Features for precision control include a smart auto boom-swing priority, computer-aided power (CAPO) and an improved hydraulic system. Hyundai's advanced CAPO system interfaces with multiple sensors throughout the hydraulic system, as well as the electronically controlled engine, to provide the optimum level of engine power and hydraulic flow for maximum performance and productivity. This system also provides complete self-diagnostic features and digital gauges for critical information, including hydraulic oil and water temperatures and fuel levels.

Ground-line access to filters, lube-fittings, machine computer component and wide-open compartment ensure maintenance is quick and convenient. The HPE Africa team works closely with BST Plant Hire, through the supply of equipment and parts, also providing a maintenance and repair service, to ensure high efficiency of every machine.

HPE Africa's national workshop facilities are geared to assist customers with modifications of machines where necessary, enabling adaptability for specific tasks. All modifications are customised through close consultation between HPE Africa experts and end-users. HPE Africa is the sole distributor in Southern Africa for Hyundai Construction Equipment and Soosan hydraulic hammers and quick couplers. The company supports its product offering with a technical advisory, support and maintenance service.

For more info visit our website www.hpeafrica.co.za



Excavator plant hire specialists in the Rustenburg area - BST Plant Hire (Blue Sands Trading) – has extended its fleet to now include a robust 38 ton Hyundai tracked excavator, which is designed to cope efficiently in arduous conditions in the chrome sector.

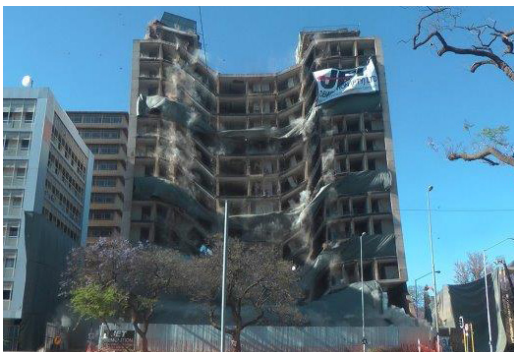
Jet Demolition crowned 'Best of the Best' at World Demolition Awards 2020

Beating top competition from the US, Canada and Australia, South African demolition specialist Jet Demolition of Randburg was crowned 'Best of the Best' at the World Demolition Awards (WDA) 2020, in addition to winning the Explosive Demolition category, in an online awards ceremony on 12 November. The 'Best of the Best' accolade is bestowed on single entrant from all the category winners that the judges deemed to be a cut above all the rest. "I am grateful to the committee for selecting us. It was a very difficult project indeed, but a pleasing result. I must thank the Gauteng Department of Infrastructure Development for awarding us the project and then thank our people who always give of their best," says Jet Demolition Director Joe Brinkmann. "I was not expecting it, and it was a huge thrill. We are very fortunate to have had the opportunity to carry out such a once-in-a-lifetime project."

Both awards were for the successful implosion of the 108-m-high, 31-storey Bank of Lisbon building in Johannesburg on 24 November 2019. This was not only the tallest reinforced concrete-frame building ever imploded by Jet Demolition but also one of its most complex projects ever undertaken. Respected industry figure William Moore, one of this year's judges, commented: "I think it was the toughest job ever entered!" Unique challenges included having the closest building a mere 8 m away. The fact that it was fire-damaged posed an incipient risk that had to be mitigated by stabilising the structure and installing an early-warning system to detect any movement, in addition to lateral support of the basement itself. All the existing furniture and personal belongings had to be cleared out, which ultimately filled 165 storage boxes, while the debris resulting from the fire had to be cleared in order to prevent any fallout from soot. Jet Demolition took the unusual approach of implosion, as opposed to top-down mechanical demolition, which Joe points out would have been much riskier and prolonged the project. "We had to look after many critical aspects. Managing the client's expectations and requirements, as well as neighbouring tenants, was a huge undertaking in itself, in addition to coordinating with the police and emergency services over months prior to the actual implosion." Being acknowledged as the 'best of the best' is definitely a career milestone for Joe, who notes it was 40 years ago that he undertook his first blasting course and underground blasting work in the US. "To be able to carry out a project like this and have it turn out perfectly is a culmination and a pinnacle."

Co-founder Liz Brinkmann concurs: "It does not get better than this as far as industry recognition goes. But it is not only about recognition. What makes Jet Demolition so special is how our team inspires each other to be their very best. It is a reminder yet again that we as South Africans can achieve amazing things when we all stand together. We need to remember that and continue to be motivated by it, especially during these difficult times." It is the first time that Jet Demolition has won the 'Best of the Best' Award, placing it in the top tier of demolition experts globally. The Awards are part of the annual World Demolition Summit organised by KHL group magazine Demolition & Recycling International, in co-operation with the European Demolition Association and the National Demolition Association of the US. It is the top industry event for the demolition industry globally. In 2019, Jet Demolition won in the Recycling and Environmental category for the safe decontamination and demolition of three redundant gold and uranium complexes. In 2018, it won in the Industrial Demolition Category for the demolition of a coal-fired boiler and ancillary equipment at Duvha Power Station in Mpumalanga. In 2017, it won for its innovative implosion of the 14-storey HG de Witt Building in Pretoria.

As for the future, Joe reveals that the project pipeline halted by the Covid-19 pandemic is slowly starting to become active again. "Those projects are piling up and we are ready for them." Not content to rest on its laurels, Jet Demolition is currently pursuing work in the Philippines, Qatar, Saudi Arabia, Mauritania and Chile. This follows successful projects undertaken in India, Indonesia and across Africa. "We have to keep on pursuing technical excellence. Being out there doing your job right and looking after your customers is the best form of securing your future that is possible," emphasises Joe. Jet Demolition will also continue to invest in equipment and develop new demolition techniques. "We have just been awarded our nineteenth consecutive NIOSCAR international safety award, which is testament to our pursuit of best practice in everything we do," stresses Joe. Jet Demolition is not only the leading demolition specialist in Africa, but the most technically-advanced as well. It has a fleet of 34 specialised demolition excavators and 44 additional items of plant, ranging from skidsteer loaders to tractors, telescopic handlers and articulated dumpers. It also has over 65 hydraulic attachments and a range of mechanical attachments.



In 2017 Jet Demolition won for its innovative implosion of the HG de Witt Building in Pretoria



Implosion of the Bank of Lisbon building in Johannesburg on Sunday 24 November 2019



Jet Demolition directors and founders Joe and Liz Brinkmann



THE ALL NEW MAXAM MINING HAULAGE TIRE - MS412 MAXAM

Continues to Innovate Solution for Open Pit Mining Applications

Gaining a strong reputation in the industry, MAXAM Mining Group continues to innovate, adding the all-new MS412 27.00R49 to their open pit mining, quarry and OTR program. Designed to meet the demanding conditions in mine sites globally, the MS412 is the result of cutting-edge engineering and groundbreaking compounding technology.

The MS412 features a high net-to-gross tread pattern that provides extremely low wear rates that drastically increase tire life. MAXAM's engineers have also strategically placed stone ejectors to provide maximum protection from stone drilling, which leads to the cause of premature tire removal and out of service conditions. Engineered with tread grooves that allow for exceptional traction and heat dissipation, the MS412 delivers excellent traction in a variety of haul roads conditions. To enable high speed operation with minimum heat build-up, MAXAM has optimized the MS412's base compound to help maximize productivity for mining operations globally.

Featuring a strong all-steel casing to reduce cuts and punctures, the all-new MS412 is engineered with increased casing durability to dominate severe hauling conditions. As an innovative group, with years of expertise in the mining industry, MAXAM's engineering team has designed the MS412 with a high lug-to-void ratio for improved wear and impact protection, providing mine sites increased protection and wear on haulage tires. Similar to all large mining haulage tires in MAXAM's program, the MS412 has deep tread grooves to provide cooler running tread and longer tire life.

Delivering a premium E4 haulage tire to the industry, the MAXAM MS412 provides exceptional performance, minimum cost-per-hour and a high net-to-gross pattern for maximum tread wear. The MS412 is available in one size as noted in the below chart. Available in multiple tread compounds, including the ultra-cut resistant compound, recently released and innovated by MAXAM's engineering and R&D team, the MS412 is a rugged solution that maximizes the haulage truck's resilience in the toughest mining environment.

For more information, please contact your local representative or visit us at maxamtire.com.

The science of addressing climate change risks in mining

Climate change is exacerbating many of the risks that mines already face in their daily operations, and needs to be factored into planning decisions right from the pre-feasibility stage of projects. Water management, for example, is becoming more complex as rainfall patterns in many areas start to change in frequency and intensity, according to Philippa Burmeister, principal scientist at SRK Consulting. "This affects mines' management of their surface water and groundwater resources, as well as biodiversity and wetland management," said Burmeister. "It has implications for infrastructure design, as it raises the risk of flooding, water insecurity and environmental damage."

Water balance

As an example, she highlighted the importance of water balance as a key aspect of tailings dam design. Here, historical rainfall data is a crucial part of the information necessary to ensure dams' safe operation in the long term.

"As rainfall variability and intensity change, the historical data becomes less reliable in guiding design parameters," she said. "Operations generally are more likely to be disrupted due to severe weather events like floods or droughts. For instance, heavier storm events may increase water volumes seeping into mine workings, requiring more pumping capacity." Ashleigh Maritz, senior environmental scientist at SRK Consulting, noted that climate change is also likely to affect the livelihood resilience of mining communities.

Social licence

"As temperatures and rainfall patterns change, traditional forms of livelihood could be threatened, making communities more reliant on the mines for income and corporate social investment," said Maritz. "The way that a mine engages with their stakeholders and supports communities is therefore critical, as it is vital to maintaining its social licence to operate." She pointed out that an important outcome of climate change is likely to be scarcity of precious resources like water – which could set mines in direct competition with local communities. Rising average temperatures in some regions may also lead to the geographic spread of communicable diseases like malaria – which may affect employees and surrounding communities. Impacts on public infrastructure will also have a knock-on effect for mines. More frequent flooding or drought will change municipalities' planning and investment in water supply or stormwater facilities. This may disadvantage the mines or affect mines' social license to operate. "This will demand not just a technical solution but careful relationship building, so that platforms are created for collaborative and long-term answers with buy-in from all stakeholders," she said.

Risk and compliance

Burmeister said that mining clients are increasingly cognisant of climate change risk. Industry standards are evolving – even in advance of national standards or requirements. "With financial institutions also seeing the potential risks to their investments posed by climate change, they are increasingly stipulating that climate change issues are addressed in planning studies for mining projects," she said. To effectively address the varied risks that accompany climate change, she emphasised that solutions need to be integrated. In other words, technical input must be coordinated across a range of professional disciplines. It is crucial that climate change impacts be 'mainstreamed' into various technical disciplines if it is to be effectively addressed. "Our philosophy at SRK is that climate change must be considered by all disciplines in the project team," she said. "This includes expertise in various facets of engineering, as well as in the natural and social sciences." SRK uses a range of quantitative and qualitative methods to investigate clients' exposure to climate change risk. These include measuring the project's greenhouse gas emissions as part of its environmental impact assessment, and applying climate change models to identify specific project risks posed by predicted changes in climatic conditions.

Innovating for sustainability

"By integrating SRK's professional input, we ensure not only that clients are compliant with regulations, but that the many and varied risks of climate change are addressed in their projects," she said. "This makes them more sustainable and robust in the longer term." Maritz noted that the science of climate change modelling is relatively young, leading the company to take an adaptive and dynamic approach – while leveraging off partnerships to develop and apply the power of predictive modelling. "This assists us in pioneering strategies and tools to manage climate change risks, from initial mine design and operational technical inputs through to social transitioning and mine closure," she said. "While monitoring is being undertaken extensively at most mine sites, the interpretation of the data is critical to identifying trends that could prevent undesirable events."

Digital and data

A key concern for SRK has been the development of better data processing and analysis capacity for the considerable mine data that is already available. This helps guide decision-making around climate change and the risks it poses.

"SRK recently established a dedicated data services unit that works closely with the climate change team to leverage and evolve the latest digital technologies" she said. "For instance, as part of an innovation project, the team is developing an interactive mining map of South Africa; this provides a coordinated source of geo-located data on various aspects and stages of mining." SRK is also looking at developing site-specific climate change-related rainfall models for its mining clients, to better inform their project and operational planning. To support its ongoing innovation efforts, the company holds an annual innovation conference that fosters collaboration between specialists and opens doors to valuable applications.



Ashleigh Maritz senior environmental consultant SRK Consulting SA



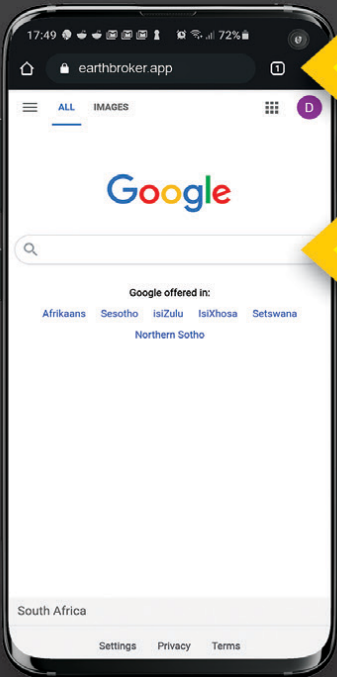
Philippa Burmeister principal scientist at SRK Consulting

earthbroker^{publication}

Earthbroker has launched an app allowing you access to our Quick reference & our digital magazine! See below on how you can download it or use the link: <https://earthbroker.app>

How to download our app

FREE FOR ADVERTISERS | APP FOR MOBILE USE ONLY



✓ Enter 'earthbroker.app' here

1 Open Google / Safari on your mobile phone.

✗ Not in search

Access to our **Quick Reference** and our latest eMag at a push of a button
FREE DOWNLOAD

2 Follow prompts to add to home screen and allow notifications if you would like.

Now follow the instructions below on how to use our app once you have saved a shortcut on the home screen.



STEP 1

Click the shortcut once the app has downloaded



STEP 2

Choose A - Z or Category Listing



STEP 3

From here you can call the company directly, email and get directions

For info on how to advertise and get your company listed please contact Janine - 083 456 4027

Building a post-pandemic construction sector

By Cyril Vuyani Gamede



Cyril Vuyani Gamede is the CEO of the Construction Industry Development Board.

It is widely accepted that, the best way for the government to stimulate the economy, thus ensuring its quick recovery, is by developing and executing an infrastructure-led economic recovery plan. Job creation in the construction sector will be a vital indicator to measure the success of South Africa's economic recovery plan.

This was true prior to the outbreak of the Covid-19 pandemic but will even grow in importance as local economic activities emerge from the embers of the global meltdown. Thus, initiatives designed to support the growth, and survival, of emerging contractors, should attract greater public attention and draw the support from established companies.

It is, indeed, possible to achieve the objectives of job creation, empowerment, and skills transfers through far-sighted partnerships between the public and private sectors and a collective commitment to transform the construction industry.

A working partnership is already up and running and achieving results. Last year the Construction Industry Development Board – cidb – signed an agreement with the Jobs Fund and the leading black-owned infrastructure company, Concor, to support SMEs and individuals who seek to gain a foothold in the sector.

The aim of the tripartite initiative by the cidb, the Jobs Fund and Concor is to develop 195 small and medium enterprises, create 1 950 new, permanent jobs and train 2 050 beneficiaries over a three-year period. Jobs are to be created across the spectrum of construction activities – in plumbing, in building, in engineering, quantity surveying and project management.

Concor Construction, part of the Southern Palace Group, acts as the implementing agent to identify emerging enterprises who are well-placed to benefit from the initiative, to assist with training and mentoring and to monitor their progress. It was quite clear from the outset that the biggest impediments to the growth of aspiring small ventures are access to capital and market opportunities as well as a lack of technical skills. Thus, the initiative focused on technical skills which will lead to improvements in the cidb gradings of participants and this will, in turn, enable them to participate in larger projects in the future. The aim is to mature small businesses into well-established companies that could operate and thrive in the mainstream economy.

The participants in the initial stage of the partnership are primarily from Limpopo, Mpumalanga, the Eastern Cape and Gauteng with some experience in civil contracting for the building of schools, residential and commercial developments. The project includes a thorough analysis of their business skills to identify areas of strength, but also the needs for organisational reconfiguration, empowerment, and the skills development of employees. Most of the initial targets have already been exceeded with Concor reporting that it accepted nine SMEs in the first six months of the programme and was on track to exceed the objective to create 40 jobs and train a further 40 beneficiaries.

This is a three-year programme which will gather momentum as it reaches maturity and garners the support from the broader industry. Covid-19 may slow down this momentum over the short term but the national focus on infrastructure and construction as the driver of the post-pandemic recovery will ensure this initiative will survive and thrive.

The cidb is a natural participant in this project because of its pivotal role in the construction industry and its proven track record of supporting emerging businesses through regulation and access to opportunities.

We have also, through the years, built strong relationships with established players in the construction and engineering sectors and have long been involved in initiatives to link large-tier companies with black-owned enterprises, especially those led by women and the youth.

There is a growing recognition of the importance to sustain the growth of SMEs and develop them into sustainable businesses. They are the productive drivers of inclusive economic growth and they will continue to take root in unsaturated sectors of the economy.

Moreover, they play a vital role in technical innovation and the utilisation of local resources. This can be a potential gamechanger to determine the post-Covid-19 trajectory of the South African economy.

It will lead to increased participation of emerging companies in the 62 vital infrastructure projects that have already been identified and are expected to attract more than R360bn in investment. These projects are designed to unlock infrastructure investment in areas in which the cidb and its partners have considerable expertise such as transport, water and sanitation and human settlements.

The cidb will continue to support this as a priority initiative. This will, no doubt, be a valuable contribution to our strategic objectives to grow skills in the industry, improve access to opportunities and create partnerships that will contribute to the transformation of the construction sector.



earthbroker

your sourcing solution for new & used equipment & machinery

- Why deal with different people each month when you can deal with the same friendly people you always deal with.
- We are proudly South African. Support your country who understand your needs.
- WE are ABC Accredited - this means we do print the amount we say we print. No pie in the sky number. We send direct to the correct people in the industry.
- We have our PAMMS certificate...This means our database has been checked and validated.
- Your advert receives FREE online exposure on our website with our online magazine and the link to the magazine is on our App, Facebook, Instagram and LinkedIn.
- We design FREE of charge and all changes are done FREE of charge.
- NO contracts to be signed.
(Just a full calender months notice is required for cancellation)



Audit Bureau of Circulations
of South Africa



**We have an
online magazine
in which your
advert is
advertised free
of charge**

We offer excellent service and design.

**Should you have people/companies you would like
added to our database , we will happily do
that should they not already be on our database.**

Please call us for a prompt response and great service!

For further info on how to get your company listed in the Earthbroker please call...**Janine - 083 456 4027**



1 X HITACHI ZX400LC-5G HYDRAULIC EXCAVATOR

Year Model: 2016
Hours (SMR): 14 880

Contact Person:
Neil Britz: +27 66 197 0178



2 X HITACHI ZX330LC-5G HYDRAULIC EXCAVATORS

Year Model: 2017
Hours (SMR): 9090 & 15 139

Contact Person:
Neil Britz: +27 66 197 0178



6 X BELL B30D ARTICULATED DUMP TRUCKS

Year Model: 2008 / 2011 / 2013
Hours (SMR):
Between 10 000 – 25 000 hours

Contact Person:
Neil Britz: +27 66 197 0178



6 X BELL B30D ARTICULATED DUMP TRUCKS

Year Model: 2008 / 2011 / 2013
Hours (SMR):
Between 10 000 – 25 000 hours

Contact Person:
Neil Britz: +27 66 197 0178



CATERPILLAR 320D

Caterpillar 320D

Dewald Hattingh: +27(0) 72 547
2198 +27(0) 11 973 3737
info@atlasmasjiene.co.za



SHANTUI SD13

Shantui SD13

Dewald Hattingh: +27(0) 72 547
2198 +27(0) 11 973 3737
info@atlasmasjiene.co.za



1X USED JCB VM115D VIBRATORY ROLLER

Year: 2011 / Serial no: 1807554
Current SMR: 1820 Hours
Dual frequency/amplitude,
Drum Drive.

Shawn Michell 082 568 4033
shawn@plantfinder.co.za
www.plantfinder.co.za
TEL: 041-379 1717



VOLVO BL61

R350 000,00 + VAT

Dewald Hattingh: +27(0) 72 547
2198 +27(0) 11 973 3737
info@atlasmasjiene.co.za



BELL L2106D

Bell L2106D

Dewald Hattingh: +27(0) 72 547
2198 +27(0) 11 973 3737
info@atlasmasjiene.co.za



HITACHI EX75

R250 000,00 + VAT

Dewald Hattingh: +27(0) 72 547
2198 +27(0) 11 973 3737
info@atlasmasjiene.co.za

For further info on how to get your company listed in the Earthbroker please call...**Janine - 083 456 4027**

For further info on how to get your company listed in the Earthbroker please call...Janine - 083 456 4027



CATERPILLAR 120H

R750 000,00 + VAT

Dewald Hattingh: +27(0) 72 547
2198 +27(0) 11 973 3737
info@atlasmasjiene.co.za



CATERPILLAR D4H

R550 000,00 + VAT

Dewald Hattingh: +27(0) 72 547
2198 +27(0) 11 973 3737
info@atlasmasjiene.co.za



CATERPILLAR 317

R450 000,00 + VAT

Dewald Hattingh: +27(0) 72 547
2198 +27(0) 11 973 3737
info@atlasmasjiene.co.za



1X VOLVO BL61B (4X4) TLB

Serial no: 1203289
Year: 2013
SMR: 7400 hours.

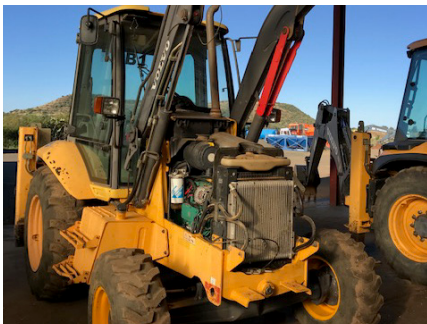
Shawn Michell
082 568 4033
shawn@plantfinder.co.za



1X USED HIDROMEK HMK62SS MINI-TLB

Year: 2018 / SMR: 865 hrs
Fully Enclosed Cab with Air-Con. Aux-
iliary Hydraulics fitted to front & rear.
Multi-purpose loader bucket.

Shawn Michell
082 568 4033
shawn@plantfinder.co.za



1X VOLVO BL61 (4X4) TLB

Serial no: 11194
Year: 2008
SMR: 8300 hours.

Shawn Michell
082 568 4033
shawn@plantfinder.co.za



STRIPPING HITACHI 870/3

Good Runner stripping for
spares. Parts still in excellent
condition.

Rodney
0731039582
rodney@marodew.co.za



1X USED JCB VM115D VIBRATORY ROLLER

Year: 2011 / Serial no: 1807554
Current SMR: 1820 Hours
Dual frequency/amplitude,
Drum Drive.

Shawn Michell
082 568 4033
shawn@plantfinder.co.za



BELL B20C

Mechanically good condition.
Very well priced.
R145 000

Rodney
0731039582
rodney@marodew.co.za



1X USED CAT D7G DOZER

Year: 1980
Serial no: 92V09714
Tilt blade, 3 shank ripper
Berco "salt" link assemblies

Shawn Michell
082 568 4033
shawn@plantfinder.co.za

For further info on how to get your company listed in the Earthbroker please call...Janine - 083 456 4027

For further info on how to get your company listed in the Earthbroker please call...Janine - 083 456 4027



TELSMITH 14 X 24 JAW CRUSHER

on heavy duty
skid base with loading
hopper and VGF

TIM MARSAY +27 83 654 4248
PATRICK MARSAY +27 79 187 7937
tim@marsayequip.co.za
www.marsay.co.za



PILOT CRUSHTEC GFH560 BELT FEEDER

TIM MARSAY +27 83 654 4248
PATRICK MARSAY +27 79 187 7937
tim@marsayequip.co.za
www.marsay.co.za



CAT D9R

2013 MODEL
3 UNITS AVAILABLE / NEW
SERVICED
CALL FOR PRICE

THOMAS MITTAG
072 545 6223
info@mae-equipment.com
www.mae-equipment.com



D8T DOZER

2011 model
import unit
Call for Price

THOMAS MITTAG
072 545 6223
info@mae-equipment.com
www.mae-equipment.com



TELSMITH 10X21 JAW JUSHER

TIM MARSAY +27 83 654 4248
PATRICK MARSAY +27 79 187 7937
tim@marsayequip.co.za
www.marsay.co.za



CAT773F WATERBOWSER

2008 model
Call for Price

THOMAS MITTAG
072 545 6223
info@mae-equipment.com
www.mae-equipment.com



1X USED ATLAS WEYCOR AR60 FEL

Year: 2017 / SMR: 2268 hours
Quick hitch, bucket &
pallet forks. Auxiliary Hydraulics

Shawn Michell 082 568 4033
shawn@plantfinder.co.za
www.plantfinder.co.za
TEL: 041-379 1717



PUTZMEISTER BSA1409 TRAILER MOUNTED CONCRETE PUMP

TIM MARSAY +27 83 654 4248
PATRICK MARSAY +27 79 187 7937
tim@marsayequip.co.za
www.marsay.co.za



KOMATSU D375 DOZER

2011 & 2008 models
available
Call for Price

THOMAS MITTAG
072 545 6223
info@mae-equipment.com
www.mae-equipment.com



VOLVO A30D

2008 model
conversion to waterbowser
ZAR 1.550.000

THOMAS MITTAG
072 545 6223
info@mae-equipment.com
www.mae-equipment.com

For further info on how to get your company listed in the Earthbroker please call...Janine - 083 456 4027

Classifieds

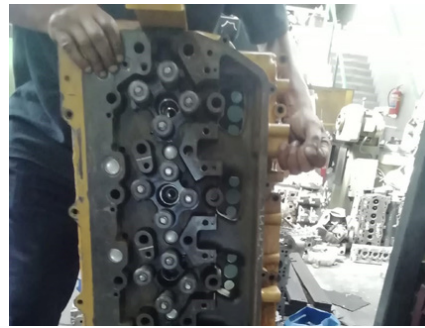
For further info on how to get your company listed in the Earthbroker please call...Janine - 083 456 4027



CAT349F

2015 model
5.089h (read-off) / import unit
Call for Price

THOMAS MITTAG
072 545 6223
info@mae-equipment.com
www.mae-equipment.com



C11/13 COMPLETE HEAD

WhatsApp Message
+27 (0)82 405 3494
sales@ipsglobal.net



D5G NEW COOLER GROUP

WhatsApp Message
+27 (0)82 405 3494
sales@ipsglobal.net



3126B COMPLETE HEAD

WhatsApp Message
+27 (0)82 405 3494
sales@ipsglobal.net



930 DIFF

WhatsApp Message
+27 (0)82 405 3494
sales@ipsglobal.net



C6.6 LONGBLOCK

WhatsApp Message
+27 (0)82 405 3494
sales@ipsglobal.net



D85-18 NEW TRACKGROUPS

WhatsApp Message
+27 (0)82 405 3494
sales@ipsglobal.net



3126 ENGINE

WhatsApp Message
+27 (0)82 405 3494
sales@ipsglobal.net



CAT 390DL-ME

2014 MODEL
9.880H (READ-OFF)
CALL FOR PRICE

THOMAS MITTAG
072 545 6223
info@mae-equipment.com
www.mae-equipment.com

For more info on advertising your machine or spares in the classifieds please call Janine on 083 456 4027
janine@earthbroker.co.za

For further info on how to get your company listed in the Earthbroker please call...Janine - 083 456 4027

Agriculture / Forestry

Bell Equipment
Filter Centre
LNE Agri-Earth

Attachments

CTC Plant Company (PTY) Ltd
Rhino Excavator Hammers
Plant Finder

Buckets

Catech Engineering
INMINE
Industrial Plant Solutions
Paramount Equipment
STM Mining
TJB Earthmoving Parts
Wearpact

Crushing

Marsay Equipment

Dyno Testing

Earthmoving Specialist
Mzantsi Transmissions
Power Transmission Technology

Exhausts

Rustpet Exhausts

Engineering

All Africa Supplies
Catech Engineering
Earthmoving Specialist
Earthmach
East Coast Gears
Gears for Africa
KDH Hydraulics
Lee's Dozers
New Beginning Designs
P&R Earthmoving
TJB Earthmoving Parts

Gearbox / Transmissions

East Coast Gears
Mzantsi Transmissions
P&R Earthmoving
Power Transmission Technology
Sintech
Vortex

Gears

East Coast Gears
Gears for Africa

G.E.T / Undercarriage

Blumaq
Centrax
ESP
ITR Africa
Industrial Plant Solutions
Mid Plant Services
P&R Earthmoving
Paramount Equipment
Spec-Cast Wear Parts
STM Mining
TJB Earthmoving Parts
Tractor Grader Spares
Wearpact

Hydraulics

Industrial Plant Solutions
KDH Hydraulics
Mid Plant Services
P&R Earthmoving
Power Transmission Technology
One Stop Procurement
TJB Earthmoving Parts
Tambani Hydraulics

Lifting Equipment

Liugong
Spider Mini Cranes SA

Lubricants & Oils

Bell Equipment
Earthmach
Filter Centre

Machine Hire

Amalgamated Plant
BLC Plant Company
Bulk Machine Hire
Lee's Dozers
Rhino Excavator Hammers
Spider Mini Cranes SA

New Machines

Barloworld SEM
Bell Equipment
Earthmach
Kemach JCB
Lovol Construction
Liugong
Spider Mini Cranes SA

New Parts

Bell Equipment
Blumaq
CTC Plant Company
Centrax
East Coast Gears
ESP
Filter Centre

Should you want to receive a free copy of our magazine please email your details to janine@earthbroker.co.za

New Parts

ITR Africa
 Industrial Plant Solutions
 LNE Agri-Earth
 Lovol Construction
 Mid Plant Services
 One Stop Procurement
 Prime Plant
 Queensburgh Plant Sales
 Rhino Excavator Hammers
 P&R Earthmoving
 Paramount Equipment
 Rustpet Exhausts
 Shin-Li Trading
 Spec-Cast Wear Parts
 STM Mining
 Shin-Li Trading
 Sintech
 Tractor Grader Spares
 Wearpact
 WEICHI SEM Parts

Pumps

All Africa Supplies
 Blumaq
 Industrial Plant Solutions
 Mid Plant Services
 Shin-Li Trading

Seats / Upholstery

The Seat Connection

Services

Bell Equipment
 CTC Plant Company
 Dura Sales
 Earthmach
 Gears for Africa
 INMINE
 ITR Africa
 LNE Agri-Earth
 Lovol Construction
 KDH Hydraulics
 Power Transmission Technology
 Prime Plant
 Queensburgh Plant Sales
 Marsay Equipment
 Mid Plant Services
 Vortex Transmissions

Turbos

Industrial Plant Solutions
 Turboworks

Torque Convertors

ITR Africa
 Industrial Plant Solutions
 One Stop Procurement
 Sintech

Tyres

Associated Equipment / Vendel Civils

Used Machines

Atlas Masjiene
 All Africa Supplies
 Amalgamated Plant
 Associated Equipment / Vendel Civils
 Azrel Equipment
 Barloworld SEM
 BLC Plant Company
 CTC Plant Company
 Dozer
 Dura Equipment Sales
 Earthmach
 Earthmoving Machine Sales
 IMIME
 Lee's Dozers
 Mae Equipment
 Marsay Equipment
 McKenzie Plant Sales
 Mid Plant Services
 Plant Finder
 Queensburgh Plant Sales
 Ramm Parts
 STM Mining Equipment
 Spider Mini Cranes SA
 WesTrac CAT

Used Parts

All Africa Supplies
 Azrel Equipment
 Bell Equipment
 BLC Plant Company
 Bulk Machine Hire
 Dozer
 Dura Parts
 East Coast Gears
 Earthmoving Machine Sales
 Earthmoving Specialist
 ITR Africa
 INMINE
 Industrial Plant Solutions
 Mid Plant Services
 P&R Earthmoving
 Parramont Equipment
 Prime Plant
 Queensburgh Plant Sales
 Ramm Parts
 STM Mining Equipment
 Shin-Li Trading
 Turboworks
 WEICHI SEM Parts

earthbroker

your sourcing solution for new & used equipment & machinery

The Earthbroker is published monthly and 5400 copies are sent to all the mines, quarries, and all companies dealing with earthmoving and construction in South Africa, Africa and some overseas countries.

We are **ABC accredited** and have our **Pamms certificate No: 2A8DD9F60574FFC2A4EEEE01A**.

We also have a website where anyone can view the magazine, which is updated monthly with the latest changes and advertisements. Please view our E-Mag on www.earthbroker.co.za

Our E-magazine is uploaded monthly to Facebook, Instagram, Linkedin and our mobile App.

We accept about 5 editorials a month which we insert free of charge. Should you have an editorial which is relevant to the industry, we will gladly give it consideration.

For details of our prices on a full page, half page or quarter page, please phone me on 083 456 4027 or e-mail me at janine@earthbroker.co.za.

We do not ask anyone to sign a contract, however we do insist on a **full calendar month's notice** for cancellation.

Please note that all quotations exclude VAT. We do insertions, (own printing costs) at R1.50 each excluding VAT.

Classifieds at R500.00 excluding VAT for a business card size advertisement only.

Janine Sargeant
(CELL)083 456 4027
janine@earthbroker.co.za

**Should you want to receive a free copy of our magazine
please email your details to janine@earthbroker.co.za**

Conditions of Acceptance for advertising

Adverts are subject to the following conditions:

1. Often we receive faxes with illegible letters or numbers. We accept no responsibility due to this.
2. We accept NO responsibility for errors in advertisements received telephonically.
3. We reserve the right to refuse placement or to place the advertisement/s as we see fit.
4. No responsibility will be taken for omission of advertisements, for any errors/colour-differences in advertisements or any results due to such errors.
5. We accept no responsibility for the quality of goods advertised. We merely bring buyers and sellers into contact with each other and we are not responsible for any results due to transactions made through the advertisements.
6. Please note one full calendar months written notice for cancellations.
7. Payment due prior to publication or interest will be charged.
8. There will be an annual increase of 10% at the beginning of each year.
9. The Earthbroker will not be held responsible for content of any advert inserted in our magazine.

COMPANY	BRANCH	DESIGNATION	CONTACT	TEL NO	A/H-CELL	EMAIL
Andru Mining	JHB	Sales	Naren Birdju	(011)395 0200 / +27 82 859 0766		plantsales@andru.co.za
Atlas Masjiene	JHB		Dewald Hattingh	+27(0) 72 547 2198 +27(0) 11 973 3737		info@atlasmasjiene.co.za
Atlas Service Centre	JHB		Fourie Von Tonder		083 301 1632	
Action Equipment Co	JHB	Sales	Yolanda	011 452 1298		yolanda@action.co.za
Africaplant.com	Newcastle	Sales	Mark	034 318 3032	082 301 3961	admin@afriplant.com
Afritool – Rent	JHB		Karen Abrams	011 974 2819	082 523 9777	karen.abrams@fluor.com
Alf's Tippers JHB	Sales		Alf Ferreira	011 824 0013	083 260 6929	alfplant@global.co.za
All Africa Supplies	JHB		Jody Da Silva	011 918 9976		sales@allafricasupplies.net
Amplant	Polokwane		Eddie Simpson	015 293 1221	082 904 7694	simpsons@amplant.co.za
Anric Enterprises	JHB		Ric de Nysschen	011 740 0975	082 647 9955	anric@cybertrade.co.za
Aquajet Profiles (Pty)Ltd	JHB	Director & Sales	Brad	011 908 5550	073 470 4958	info@aquajetprofiles.co.za
Arch Equipment	JHB		Greg Archibald		082 803 4227	archhire@mweb.co.za
Associated Equipment Co	JHB	Sales	Jaap	011 801 4911/2	082 892 1327	associated1@xnet.co.za
AVANT SA CPT			Wally	021 851 0722	076 688 3399	info@avantsa.co.za
Azrel Equipment	JHB	Sales	Mike Imrie	(010)590 8048	083 230 3118	mike@azrelequipment.com
B&B Plant / Unicrane	Empangeni		Bob Fogg	035 787 0679	082 570 5781	sales@bbplant.co.za
Barloworld Equipment Co				011 929 0000		
Barloworld Equipment Co	Durban	Parts	Brett Woodhouse	031 705 8500	071 484 1035	bwoodhouse@barloworld-equipment.com
Barloworld Equipment Co	Durban	Parts	R. Haripersadh	031 705 8500		rharipersadh@barloworld-equipment.com
Barloworld Equipment Co	Newcastle	Parts	Milan Pather	034 315 2847	073 971 2046	mpather@barloworld-equipment.com
Barloworld Equipment Co	Newcastle	Sales	Brendan Moore	034 315 2847	073 781 8865	
Barloworld Equipment Co	Richardsbay	CRS	Rolfe Botes	035 797 6300	082 904 9619	jhumphries@bw-eq.com
Barloworld Equipment Co	Bloemfontein	Sales	Quentin Coetzee	051 4091200	078 460 2622	qcoetzee@barloworld-equipment.com
Bell Equipment	Richards Bay	Parts	Jackie Smith	035 907 9111	082 550 8791	bellparts@bell.co.za
Bell Equipment		Sales	Andrew Pretorius	011 928 9700	071 607 3978	partssales@bell.co.za
Bell Equipment	JHB	Used Parts	Fazel Patel	011 928 9700		usedparts@bell.co.za
Bell Equipment	JHB	Machine Sales	Myburgh	011 928 9700		sales@bell.co.za
Bert's Bricks (Pty)Ltd	Potchefstroom	Sales	Lizelle	(018)292 1615		marketing@bertsbricks.co.za
BKB Van Wyk	JHB			017 712 2132		vanwykinfo@telkomsa.net
Blumaq	JHB		John Beukes	011 966 5092		john.beukes@blumaq.com
BLC Plant Company	JHB	Machine Sales	Luigi Stravino	011 555 2000	082 552 7017	luigistravino@blcplant.com
BLC Plant Company	JHB	Machine Sales	Paolo Stravino	011 555 2000	082 852 3721	paolotravino@blcplant.com
BLC Plant Company	JHB	Machine Sales	Andrew McCall	011 555 2000	082 256 0334	andrewmccall@blcplant.com
BLC Parts	JHB	Parts Sales	Robbie Stocks	011 555 2000	082 492 9263	
BLC Parts	JHB	Sales	Mike du Plessis	011 555 2000	082 508 2908	mikeduplessis@blcplant.com
BLC Parts	JHB	Sales	Michael Marriott	011 555 2000	082 905 8983	michaelmarriott@blcplant.com
BMH Trading International	Cape Town		Bradley	021 903 2667	082 780 0084	bradley@bmhtradinginternational.com
Bom-mach / Stampede	JHB	Sales	Jabu	011 394 5704		info@stampede.co.za
Bruforce	JHB		Craig	011 393 1298	083 627 2533	bruforce@lantic.co.za
Bulk Machine Hire	Bapsfontein	Sales	Neil Britz	066 197 0178		karen@bulkmachine.co.za
Burgers Equipment & Spares			Anka Burger	011 979 3636		admin.za@burgersafrica.com
Caldas Engineering & Manufacturing	JHB	Marketing	Melanie	011 453 7797		info@caldas.co.za
Capital Equipment Parts	JHB		Mark	011 568 4215		info@capiparts.co.za
Catech Engineering	JHB		Lee Bray	071 687 9274		lee@cattam.co.za
Centrax	JHB	Sales	Brendan	011 974 4307	083 654 7885	brendan@centraxsa.co.za
Centrax	DBN	Sales	Steve	086 123 6872	083 613 0664	centraxkzn@telkomsa.net
Cranes Direct	Boksburg	Parts Sales	John Thage	011 894 8056	083 254 4068	john@cranesdirect.co.za
Cranes Direct	Boksburg	Sales	Mark Le Roy	011 894 8056	083 233 2140	mark@cranesdirect.co.za
CTC Plant Company	Cape Town	Owner	Colin McOwen	021 386 4190	082 440 4806	colin@ctcplant.co.za
CTC Plant Company	Cape Town	Sales	Evert Jooste	021 386 4190	082 825 8865	evert@ctcplant.co.za
CTC Plant Company	Cape Town	Sales	Peter Groenewald	021 386 4190	072 368 5581	peterg@ctcplant.co.za
CTC Plant Company	Cape Town	Sales	Mark Walker	021 386 4190	082 441 2446	markw@ctcplant.co.za
CTC Plant Company	Cape Town	Sales	Robert Freeman	021 386 4190	079 500 3940	robert@ctcplant.co.za
CTC Plant Company	Cape Town	Parts	Mark Swanepoel	021 386 4190	082 825 6966	marks@ctcplant.co.za
CTC Plant Company	Cape Town	Parts	Nico Vermeulen	021 386 4190	084 525 6966	nic_v@ctcplant.co.za
CTC Plant Company	Cape Town	Service	Olla van den Heever	021 386 4190	082 467 1894	olla@ctcplant.co.za
CTC Plant Company	Cape Town	Transport	Ian Geyser	021 386 4190	082 440 5861	ian@ctcplant.co.za
CTC Plant Company	Cape Town	Transport	Shaun Haman	021 386 4190	082 495 2640	shaun@ctcplant.co.za
DBZ Diesel Parts	JHB			087 751 4555	074 106 2158	jhb@dbzdiesel.com
DBZ Diesel Parts	Cape Town		Jason Martincich	021 556 6502	082 353 5971	jason@dbzdiesel.com
DBZ Diesel Parts	Durban			031 564 8091/2	082 565 8446	durban@dbzdiesel.com
D- MAN SALES	JHB	Sales	Wessels		072 172 7718	wessels@lpss.co.za
Deutz Diesel Engines	Meadowdale		Johan Reiners	(011)974 3549	082 457 1542	miere@icon.co.za
Deutz Diesel Power	Durban	Branch manager	Nivern Pather	031 700 2384	082 375 4912	nivern@deutz.co.za
Deutz Diesel Power	JHB		Nathan Kitchen	011 923 0600		nathan@deutz.co.za
DGI Trading	JHB		Henk Arnold	010 065 0888	083 233 0019	henk.arnold@dgitrading.co.za
Dirt Diggers	JHB		Vic Viljoen	011 023 6674	082 822 3915	vicv@merchantwest.co.za



**“The man who stops advertising
to save money is like the man
who stops the clock to save time.”**

- Thomas Jefferson -

In difficult economic times one should put more effort into promoting
your business, your services and your products.

Cutting back on your advertising will ensure that your business loses ground
to competitors who know and understand this.

Quick Reference

COMPANY	BRANCH	DESIGNATION	CONTACT	TEL NO	A/H-CELL	EMAIL
Dosco Hydraulic Eng. cc	Montague Gardens		David Laubscher	021 551 2283	082 579 6465	david@doscocape.co.za
Dosco Hydraulic Eng. cc	Montague Gardens		Mike Hart	021 551 2283	082 228 5031	
Dozer	JHB		Graeme	011 452 1224		info@dozer.co.za
Dozer	JHB	Specialized Sales	Chris Cronje	011 452 1224	082 491 5472	info@dozer.co.za
Dura Equipment	JHB	Sales	Prinsloo Munro	011 918 4760	071 611 7281	prinsloo@durasales.co.za
Dura Equipment	JHB	Sales	Ernest Human	011 918 4760	079 874 5458	ernest@durasales.co.za
Dura Equipment	JHB	Sales	Jerry van Niekerk	011 918 4760	082 895 5611	durasales.co.za
Dura Equipment	JHB	Sales	Coenie Albertyn	011 918 4760	083 251 8046	coenie@durasales.co.za
Dura Equipment	JHB	Sales	Curtis Brown	011 918 4760	083 258 5784	curtis@durasales.co.za
Dura Equipment	Cape Town	Sales	Pottie Potgieter	021 988 6618	083 600 0729	pottie@durasales.co.za
Dura Equipment	Cape Town	Sales	Gerrie du Randt	021 988 6618	082 950 7040	gerrie@durasales.co.za
Dura Equipment	Cape Town	Sales	Charmaine Lombard	021 988 6618	082 777 1544	charmaine@durasales.co.za
Earth Mach	Mpumalanga		Chris	017 843 2072	083 232 8713	chris@earthmach.co.za
Earth Moving Plant & Trans.	Pinetown		Richard	031 705 1770	083 777 0152	richard@ept.co.za
EHD Johannesburg		Sales	Lodewyk van As	011 870 5000		ehd@ehd.co.za
Earthmoving Machine Sales	KZN	Sales	Jason	031 777 1025	083 412 1077	jason@sa-ems.co.za
East Coast Gears	KZN	Sales	Johan	031 701 3500	084 244 3324	eastcoastgears@gmail.com
ELB Equipment				011 306 0700		elb@elbequipment.co.za
Equipment Parts & Engines	Isando	Managing member	Attie vd Bergh	011 571 9000	082 655 9276	info@equipmentparts.co.za
ESP	Isando	Div Manager	Gary Wright	011 398 1700	082 449 6773	garyw@espa.co.za
ESP	Benoni	Div Manager	Adrian Erasmus	011 845 2911	083 449 0519	adriane@espa.co.za
ESP	Pretoria	Reg Manager	Willie v.d Merwe	012 804 6706	082 789 0828	williev@espa.co.za
ESP	Middelburg	Div Manager	Leon Bezuidenhout	013 246 2520	083 778 9877	leonb@espa.co.za
ESP	Pinetown	Reg Manager	Shaun Clarke	031 705 4200	082 413 1103	shaunc@espa.co.za
ESP	Cape Town	Reg Manager	Jaco Bekker	021 945 1030	072 384 4901	jacob@espa.co.za
ESP	Port Elizabeth	Branch Supervisor	Rainier Gerber	041 484 4575	083 698 1805	rainierg@espa.co.za
ESP	Bloemfontein	Reg Manager	Craig Wansbury	051 432 4501	082 413 2708	craigw@espa.co.za
ESP	Kimberley	Branch Supervisor	Kingsley Olyn	053 831 8349	082 805 7558	kingsleyo@espa.co.za
Filter Centre	Pinetown	Manager	Viyen Maharaj	031 700 9074	076 727 3985	info@filtercentre.com
Filvent	Witbank		Bernard	013 656 2726		workshopmanager@filvent.co.za
Fluid Blast Engineering	JHB		George Slabbert		082 550 1385	fluid.blast@live.com
Force 8 CC	Cape Town		Justin Nicoll	021 535 1117	082 373 9802	info@force8.co.za
Full Blast Hydraulics	JHB		Andre Calitz	(011)900 3790		info@fullblasthydraulics.com
Fusion Torque Components	JHB	Director	Eldred Carstens	011 828 9023	083 460 6790	eldredfusion@telkomsa.net
Gears for Africa	JHB	Sales	Carl	011 824 2017		carl@gearsforafrica.co.za
Gears for Africa	CPT	Sales	Carl	021 577 1030		carl@gearsforafrica.co.za
GET Spares	JHB	Sales	Raymond	(011)397 5276	082 655 2301	sales@getspares.co.za
GET Spares	JHB	Sales	Freddy	(011)397 5276	082 604 0045	sales@getspares.co.za
GET Spares	JHB	Sales	Clyde	(011)397 5276	082 581 5152	sales@getspares.co.za
Gillroy	Durban		Rob Gillit	031 765 2745	083 661 2057	info@gillroyplant.co.za
G-Man Trading	JHB	Sales	Luke Jr.	011 672 7011		lukej@gman.co.za
GO Industry - Dove Bid			John Cowing	0861 463 683	083 662 0237	john.cowing@liquidityservices.com
GR Spares	Pinetown	Sales	Gavin	031 705 5463	082 452 8690	grspares@webstorm.co.za
Grindright Engineering	Middelburg		Piet De Vos	013 246 2308	064 849 2320	grindright@gmail.com
HL Du Plooy	Harrismitth		Hennie Du Plooy	082 719 8744	082 574 4212	hennie@hlduplooyplant.co.za
Heavy Duty Earthmoving Parts			Jannie Burger	011 394 4125/6/7		jannie@hdep.co.za
HPE Africa	Jet Park	Sales Manager	Lani	011 397 4670		marketing@hpeafrica.co.za
HPE Africa	Durban	Branch Manager	Adam Armitage	031 700 3426		Adam.armitage@hpeafrica.co.za
HPE Africa	East London	Branch Manager	Leon Dreyer	043 732 1428		leon.dreyer@hpeafrica.co.za
HPE Africa	Cape Town	Branch Manager	Gary Pnematicatos	021 905 0581/2		Gary.P@hpeafrica.co.za
Industrial Engine Parts	JHB	Sales	Morne	011 868 5436	082 851 7514	sales@ieppower.co.za
Industrial Plant Solutions	Natal		David Botha		083 405 3494	sales@ipsglobal.net
Immine Inala Mining Services	Witbank		Clement Van Der Merwe		082 414 1393	sales@immine.co.za
ITR SA	JHB	National Sales	Manager Carel Zwieglaar	011 614 0070		carel.zwieglaar@itrafrica.com
ITR SA	Middelburg		Steven Hugo	013 590 5614		middelburg@itrafrica.co.za
ITR SA	Bloemfontein	Sales Manager	Jacques Billing	051 011 5620		jacques.billing@itrafrica.com
ITR SA	JHB	U/C Manager	Sean Smit	011 614 0070		sean.smit@itrafrica.com
ITR SA	CPT		Lee-Anne	021 905 7340		lee-anne.vandernest@itrafrica.com
ITR SA	Kathu	Branch Manager	Michiel Jacobs	053 723 2245		michiel.jacobs@itrafrica.com
ITR SA	EL	Branch Manager	Shaun Smith	043 748 3541		shaun.smith@itrafrica.com
ITR SA	PE	Reg. Manager	Basil De Coning	041 451 2210		basil.deconing@itrafrica.com
ITR SA	Pinetown	Sales Manager	Quintin Pillay	031 941 1133		bronwyn.claesson@itrafrica.com
ITR Africa	Zambia	Operations Manager	Andre Synders	260 96 351 3429		andre.synders@itrafrica.com
ITR Africa	Namibia	Director	Hanjo Schierschmidt	264 83 331 5160		hanjo.schierschmidt@itrafrica.com
J&T Earthmoving Maintenance	Kempton Park		Alex Savage		081 895 5583	alex@earthmovingmaintenance.co.za
Jacobs Transport	Vereeniging	Sales	Gys Jacobs	010 200 9946	083 544 0275	gys@jacobstransport.co.za
JBS Plant Hire	Klerksdorp		Tonie van den Heever	018 469 1016/7	083 654 7809	jjvdh@lantic.net
Johnson Taylor	JHB	Sales Manager	Graham	011 614 5122		graham@johnsonntf.co.za
JW Plant Hire and Sales	Welkom	Sales	Leon	057 355 1119	083 253 6110	j.w.plant@telkomsa.net
Kaltire			Jacques Roux	012 548 9327	083 777 9497	jacques_roux@kaltire.com
Kappa Engineering		Managing Director	Gerrie Visagie	011 828 5506/8	082 575 2199	gerrie@kappaeng.co.za
Kappa Engineering Procurement		Rebuild Director	Nathaniel Hauptfleisch	011 828 5506/8	082 928 6312	nathaniel@kappaeng.co.za
KDH Hydraulics	JHB		Ricus	011 762 9001/2	071 678 3746	ricus@kdhhydraulics.co.za
Kemach JCB	JHB			011 826 6710		sales@kemachjcb.co.za
Kemach JCB	Middelburg			013 244 1839		sales@kemachjcb.co.za
Kemach JCB	Pretoria			012 548 2956		sales@kemachjcb.co.za
Kemach JCB	Bloemfontein			051 432 3978		sales@kemachjcb.co.za
Kemach JCB	Durban			031 700 8278		sales@kemachjcb.co.za
Kemach JCB	Richards Bay			035 751 2718		sales@kemachjcb.co.za
Kemach JCB	CPT			021 949 7442		sales@kemachjcb.co.za
Kemach JCB	Port Elizabeth			041 453 1819		sales@kemachjcb.co.za
Kemach JCB	East London			043 732 1902		sales@kemachjcb.co.za
Kemach JCB	George			044 878 0366		sales@kemachjcb.co.za

COMPANY	BRANCH	DESIGNATION	CONTACT	TEL NO	A/H-CELL	EMAIL
Kemach JCB	Mthatha			047 531 1688		sales@kemachjcb.co.za
KHD Electrical			Delville Kuhn	011 392 4444		delville@khdiesel.co.za
Komatsu	Cape Town	Sales	Frederick van Ryneveld	021 951 1251	082 317 2849	info@komatsu.co.za
Komatsu	Bloemfontein	Sales	Ian Banham	051 434 2221/2		ian.banham@komatsu.co.za
Komatsu	Gauteng	Sales	Graeme Armstrong	011 923 1000		Graeme.Armstrong@komatsu.co.za
Komatsu	Gauteng	Sales	Karen van der Walt	011 923 1000		Karen.vanderWalt@komatsu.co.za
Komatsu	Gauteng	Sales	Francois Griesel	011 923 1000		Francois.Griesel@komatsu.co.za
Komatsu	Kimberley	Sales	Jaco Van Heerden	053 832 2061		jaco.vanheerden@komatsu.co.za
Komatsu	Pinetown	Sales	Jacques van der Sandt	031 710 4950	082 888 0995	info@komatsu.co.za
Komatsu	Port Elizabeth	Sales	George Hyman	041 452 6555	082 882 9576	george.hyman@komatsu.co.za
Komatsu	White River	Sales	Fortune Mathiba	013 758 9900	083 675 1756	Fortune.mathiba@komatsu.co.za
Komatsu	Wolmeransstad	Sales	Piet du Toit	018 596 2244	083 271 3567	info@komatsu.co.za
Komax Spares	JHB		Jacques	011 664 8828	082 616 1654	jacques@jsaeearth.co.za
Komax Spares	JHB		Gawie	011 664 8828	082 650 0505	
Komax Spares	JHB		Danie	011 664 8828	076 222 2708	
Kruiper Spares	Port Elizabeth	Sales	Gary	041 585 6455	083 321 0819	kruiper@global.co.za
Kruiper Spares	Port Elizabeth	Sales	Bill	041 585 6455	082 569 2740	kruiper@global.co.za
Kruiper Spares	Port Elizabeth	Sales	Philip	041 585 6455	083 235 3919	kruiper@global.co.za
Landboupart	Isando			011 966 9200		info@landboupart.com
Lee's Dozers	JHB		Lee Bray	071 687 9274		leeb@leesdozers.co.za
Leo Hydraulics				011 976 1941		admin1@leohydraulics.co.za
LiuGong Machinery SA	JHB	Parts		011 979 3636		admin.za@burgersafrica.com
LNE Agri Earth (Pty) Ltd	JHB	Sales			083 327 3237	LNE@LNE-AgriEarth.com
LPM Procurement	Germiston	Office	Linda Patricio	011 776 9160	083 637 7122	info@lpmprocurement.co.za
Machinery Contractors	Brits		Wayne	012 250 3534		wayne@machinerycontractors.co.za
Mae Equipment	Witbank	Sales	Thomas Mittag		072 545 6223	info@mae-equipment.com
Mafika Engineering	JHB			011 334 1120		info@mafika.co.za
Marange Plant & Mining	Bloemfontein		Maryke	053 841 0415	082 296 9810	maryke@marange.co.za
Marsay Equipment	Johannesburg		Tim Marsay	011 781 7410	083 654 4248	tim@marsayequip.co.za
Masslift Africa Mitsubishi Forklifts Dbn		Product Support/Spares	Brandon	031 700 8480	078 697 6161	Brandon@mlift.co.za
McKenzie Plant	Sales	Richmond/KZN	Stuart McKenzie	033 212 2181	082 558 7901	sjm@mckenzieplant.co.za
MHS Plant	JHB	Sales	Conrad	010 500 6193	082 781 9481	conrad@mhsplant.com
Midplant Services	JHB	Sales	Kellas	011 967 0055/60	083 675 1385	sales@midplant.com
Midplant Services	JHB	Sales	Jeff	011 967 0055/60	083 657 6123	sales@midplant.com
Midplant Services	JHB	Sales	Lee	011 967 0055/60	083 459 1695	sales@midplant.com
Milltech Engineering			Neil	011 421 7821	083 460 6510	neil@milltech-eng.com
Multi One Evolution	Benoni		Lofty Van Wyk		082 888 8899	info@multi-one.co.za
Mzantsi Transmissions	Johannesburg	Sales	Darryl Cilliers	011 868 5130	071 684 5784	info@gearboxes.me
N12 Truck Yard	Delmas – Mpumalanga				013 661 1039	sales@n12truckyard.co.za
Nduna Spares	Steelport		Natasha Reynders	013 230 3852		ndunasapares@gmail.com
New Beginnings Designs	JHB		Suken	011 791 4120	082 923 7987	suken@nbdesigns.co.za
NUCO Auctioneers	Dooringkloof East Pretoria		Jaco De Jager		011 206 8963	jaco@nucoauctioneers.com
One Stop Procurement	Benoni		Roger Melenas	011 420 1003	079 493 4486	roger@onesp.co.za
P&R Earthmoving	JHB	Sales	Scott	010 823 6385		scott@prearthmoving.com
P&R Earthmoving	JHB	Sales	Grant	010 823 8821		grant@prearthmoving.com
P&R Earthmoving	JHB	Sales	Ladis	010 823 7322		ladislas.l@pandearthmoving.com
P&R Earthmoving	JHB	Sales	Greg	010 823 6276		greg@prearthmoving.com
P&R Earthmoving	JHB	Sales	Kyle	010 823 6385		kyle@prearthmoving.com
P&R Earthmoving	JHB	Sales	Conrad	010 823 7972		conrad@pandearthmoving.com
P&R Earthmoving	JHB	Sales	Rikus			rikus@prearthmoving.com
Pacific Construction Equipment		Fairleads Benoni	Mark	011 453 1567	082 441 4587	markivan@mweb.co.za
Paramount Tracks	JHB	Sales		010 007 3258	082 894 5547	sales@paramounttracks.com
Paul Heslop Plant Services			Paul Heslop	086 111 5422	074 101 8239	paul@pixie.co.za
PEX Hydraulics	Cape Town	Sales	Nick Kotzee	021 556 3232		nick@pex.co.za
PEX Hydraulics	Johannesburg	Sales	Mark Dickason	011 882 8413		mark@pex.co.za
Pex Hydraulic Repairs	KZN	Sales	Priscilla Shanker	031 705 5050	084 429 8654	priscilla@pexkzn.co.za
Pilot Crushtec	JHB			011 842 5600		sales@pilotcrushtec.co.za
Plant Finder	PE		Shawn Michell	041 379 1717	082 568 4033	shawn@plantfinder.co.za
Powertrans Rebuild Centre	Isithebe		Ricky Naidoo	032 459 5700	082 555 4925	info@powertrans.co.za
Power Transmissions Technology Benoni			William	011 022 8570		info@pttech.co.za
Primeplant	JHB		Francois	011 979 4853	066 489 4891	spares@primeplant.co.za
Queensburgh Plant Sales	JHB	Used Sales	Wikus	011 964 1631	083 235 5665	qpsales@mweb.co.za
Queensburgh Plant Sales	JHB	New Sales	Albert	011 964 1467	082 652 4907	qpsales@mweb.co.za
R21 Trucks	Centurion	Sales Manager	Mark Noble	011 206 8958	082 226 2220	mark@r21trucks.co.za
Ramm Parts	Witbank		Adriaan	076 127 2977		adriaan@rammparts.co.za
Ramm Parts	Witbank		Mark	072 530 7373		marc@rammparts.co.za
Ramm Parts	Witbank		Rodney	073 103 9582		
Randle Parts	KZN	Sales	Stan		083 653 4270	
Randle Parts	KZN	Sales	Justin		083 639 1982	justin.cope@randleparts.co.za
Randle Parts	KZN	Sales	Geoff		074 843 5298	
Rankin Training	DBN		Marcel	031 702 8447	082 909 9070	marcel@rankintraining.co.za
Reef Fuel Injection Services	JHB	Manager	Warren Hauser	011 873 2354		warren@reeffuel.co.za
Rent a Dozer	Marble Hall	Owner	Theodor Kleynhans	013 261 1746	083 459 5593	admin@rentadozer.co.za
Replacement Spares Unltd. / RSU	Pretoria		Sales Paul Pelsner	012 803 8714		paul@rsu.co.za
Rham Equipment	Olifontfontein		Michael Combrink	011 203 7900		info@rham.co.za
Rhino Excavator Hammers	JHB		Paul	086 111 5422	074 101 8239	sales@rhinohammers.co.za
Rhino Excavator Hammers	JHB		Clive	(011)397 3327	071 670 8707	sales@rhinohammers.co.za
Rocktech Earthmoving Wearparts JHB		Manager	Derek Swift	011 793 6838	082 561 4682	derek@rocktech.co.za
Roger's Undercarriage	JHB			011 964 2695	083 974 5851	rogers.uc@mweb.co.za
Ruspet Exhausts	JHB		Russell	011 827 2824	083 448 7669	russell@ruspet.co.za
Scotty's Plant Hire Pinetown			Ashley Scott	031 700 8000		scottys.plant@mweb.co.za
Scotty's Plant Hire	Pietermaritzburg		Ashley Scott	033 386 1653/14		scottysprmbales@mweb.co.za
Sclanders Mech Natal		Sales	Ivan Kaisten	031 700 8083	083 653 3724	ivan@schlendermech.co.za

Quick Reference

COMPANY	BRANCH	DESIGNATION	CONTACT	TEL NO	A/H-CELL	EMAIL
SEM	JHB	Parts	Barry Fang		072 399 9817	bm@semrsa.co.za
SEM	JHB	Parts	Saaj		061 564 1167	parts1@semrsa.co.za
Sew's Plant & Civils	KZN		Sunash	031 507 2491	082 284 5082	info@sews.co.za
Shin Li Trading	Johannesburg			011 396 1081/87	079 872 0465	sales@shinlitrading.co.za
Shonakhona Logistics				032 943 3428	073 188 2004	
Sino Plant	Gauteng	Sales Manager	Mark Noble	011 206 8958	082 226 2220	mark@sinoplant.co.za
Spec-Cast Wear Parts	JHB	Sales Manager	Shelton Holdsworth	011 396 1713	063 733 4626	shelton@spec-cast.co.za
Spec-Cast Wear Parts	Middelburg	Sales	Herman Bezuidenhout	013 813 1413	072 187 6943	herman@spec-cast.co.za
Spec-Cast Wear Parts	Kathu, N/Cape	Sales	Ilse van Rooi	053 010 1304	067 414 8832	northerncape@spec-cast.co.za
Sintech	JHB	Sales	Jacob Nkabinde	011 823 2359		sales@sintech.co.za
SparePower	JHB	Parts Sales		011 845 4184	082 457 2804	terry@sparepower.co.za
STM Mining	JHB	Sales	Barney v Rooyen	011 894 6192	072 086 6163	barney@stmmining.co.za
Tambani Hydraulics	JHB		Lee Bray	071 687 9274		lee@tamhyd.co.za
The CAT Rental Store / Barloworld		Durban		(031)569 8500	082 909 9188	mnicolia@barloworld-equipment.com
The Seat Connection	JHB	Sales	Lydia/Graham	011 452 6802/6814		info@seatconnection.co.za
TJB Earthmoving Parts Buying JHB			Brad	+27 71 154 3786		brad@tjbearthmoving.co.za
Tommy's Auto Parts	Newcastle		Ahmed	034 375 8111	072 889 2581	exportintl@aol.com
Tractor and Grader Supplies	JHB	Sales	Jeannine	011 392 7533		jeannine@tags.co.za
Tractor and Grader Supplies	Witbank	Sales	Markus	082 921 8634		markusv@tags.co.za
Tractor and Grader Supplies	Witbank	Sales		013 492 2399		markusv@tags.co.za
Tractor and Grader Supplies	Durban	Sales	Theo	082 553 7663		theo@tags.co.za
Tractor and Grader Supplies	Cape Town	Sales	Neal Simpson	082 606 7366		neal@tags.co.za
Tractor and Grader Supplies	Swaziland	Sales	Tiago	+268 2 518 4548		tiago@tags.co.za
Tractor and Grader Supplies	Namibia	Sales	Handre	+264 61 264710/1/2		handre@powerpartsnamibia.co.za
Transand			Fran cois Gerber	044 695 0105	082 454 0934	charlesjnr@transand.net
Trysome cc	JHB	Supplies	Jaco	(011)823 5650		jaco.vandermerwe@trysome.cc
TTC Engineering & Hydraulics	JHB		Owner Tino	011 845 2837	082 822 4676	tino@ttcenghyd.co.za
TTC Engineering & Hydraulics	JHB		Admin Chanel	011 845 2837		admin@ttcenghyd.co.za
Turboworks	Centurian	Sales		012 653 7507	082 824 8037	sales@turboworks.co.za
Unity	JHB	Sales		011 845 1630	082 457 0221	unitysalesandservices@gmail.com
VR Diesel & Turbo			Wayne	013 246 1003	083 310 9235	wayne@vrdiesel.net
Vendal Civils	JHB		Anton	011 801 4911/2	082 923 5397	vendels@mweb.co.za
Vendel Equipment Sales	JHB	Sales	Jaap	011 801 4911/2	082 892 1327	associated1@xnet.co.za
Vita Plant & Equipment	Brits	Machine Sales & Repairs	Costa Voyiatzakis	012 252 2915	082 521 7095	nicholas@vitaplant.co.za
Vortex transmissions	JHB		Johan	011 452 4430	082 333 1005	vortex@mweb.co.za
Vortex transmissions	JHB		Jan	011 452 4430	082 333 1004	vortex@mweb.co.za
WH Auctioneers	Midrand	Sales	Shannon	011 574 5700	084 520 5000	info@whauctions.com
WH Auctioneers	Midrand	Sales	Mathew	011 574 5700	084 252 5000	info@whauctions.com
WH Auctioneers	Midrand	Sales	Tim	011 574 5700	082 371 1069	info@whauctions.com
WAHA Equipment	Midrand	Sales	Will	011 574 5728	076 037 9516	will@waha.co.za
Wearpact	JHB	Sales	Linda	011 845 3234	083 453 3960	mwwrp@mweb.co.za
Weichai	JHB	Parts	Barry Fang		072 399 9817	bm@semrsa.co.za
WesTrac	AUS		Ron Lanzon	+61 418 927 625		Ronald.Lanzon@westrac.com.au
Wilson Plant	CPT	Sales	Miles Wilson	021 534 9536	082 928 9215	admin@wilsonplant.co.za
Yellow Metal SA	Pretoria	Sales	Pieter Botha	011 970 1299	082 805 8220	sales@ymsa.co.za
ZF Services South Africa	JHB	Sales: Service Parts	Warren Viviers	(011)457 0031	082 776 2759	warren.viviers@zf.com
ZF Services South Africa	JHB	Workshop: Off-road division	Christo Uys	(011)457 0091		christo.uys@zf.com

Want Your company listed in our Quick Reference Guide? Please email your company details to janine@earthbroker.co.za





QPS

QUEENSBURGH PLANT SALES

Keep it simple buy quality



**Your friendly supplier of
new and used
earthmoving parts**

**KOMATSU – HITACHI – HYUNDAI
DOOSAN CATERPILLAR – NEW
HOLLAND – TEREX – JCB CASE
CONSTRUCTION – CARRARO
CUMMINS**

**KEEP IT SIMPLE
BUY QUALITY**

**EARTHMOVING
MACHINE PARTS
SALES REPAIRS**

Albert
082-652-4907
albert@qps.africa

Riccardo
061-224-6829
riccardo@qps.africa

Madeline
082-328-9370
madeline@qps.africa

Dave
082-708-7965
dave@qps.africa

Werner
079-740-2088
werner@qps.africa

Wikus
083-235-5665
wikus@qps.africa

WWW.QPS.AFRICA
TEL (011) 964 1631

Beat the heat with cool summer specials

VISCOUS HUB

DC221094



OM442LA
ADT B35C/B40C

VISCOUS HUB

DC222218



OM502LA
ADT B45D/B50D

RADIATOR

AT393357



TLB 315J

OIL COOLER

AT349656

TLB 315 SJ/SK



THERMOSTAT

DC220731



• 79 DEG C • ADT B25C/D, B30D

RADIATOR

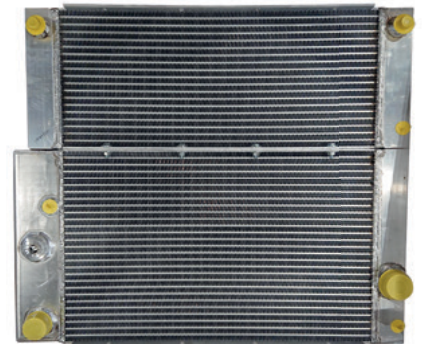
206355 ADT B35D/B40D



216471 ADT B40D/B50D

RADIATOR AND COOLER

216691



TRACTOR I866 GEN4



Whatever your need,
Bell has the right parts for you.

FOLLOW US ON



Contact your nearest BELL Customer Support Centre • E-mail: bellparts@bell.co.za
www.bellequipment.com

Strong Reliable Machines
Strong Reliable Support

BELL