

your sourcing solution for new & used equipment & machinery

earthbroker

email: janine@earthbroker.co.za web: www.earthbroker.co.za

volume 17 | issue 3 March 2021



www.liugong.co.za - admin.za@burgersafrica.com



Equipment and Spares

South Africa Official Dealer
Tel: 011 979 3636
www.liugong.co.za



Liugong South Africa
Tel: 011 979 0971 | www.liugong.com



YES WE ARE OPEN

We form part of South Africa's essential services to keep our food industry and municipalities going. Keep safe and call if we can assist. 083 657 0522

GFA

Gears for Africa

WE MOVED TO BIGGER PREMISES
145 Lamp Road, Wadeville
Germiston

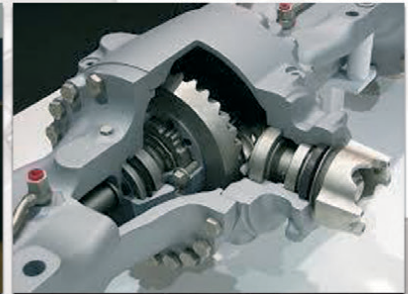
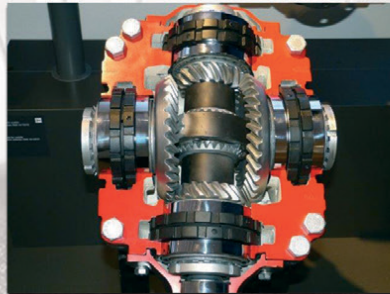
OUR QUALITY COMPARES 100 % TO ANY OEM SPARE MANUFACTURES

MANUFACTURE OF SPIRAL BEVEL GEARS NOW AVAILABLE



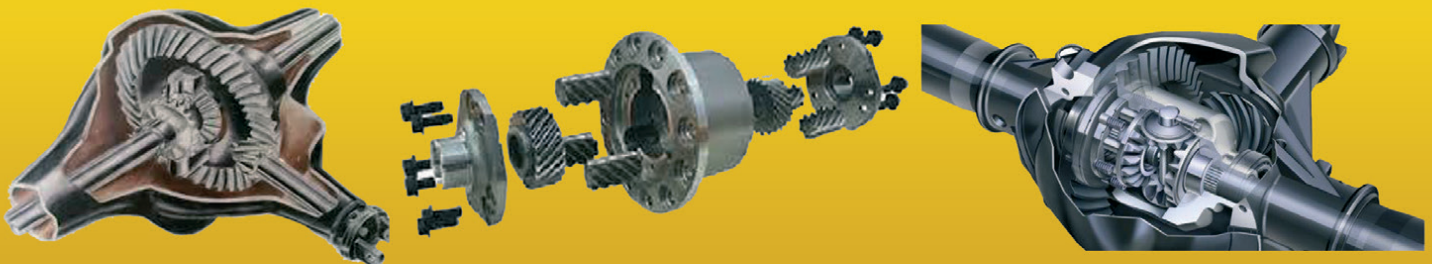
Gears for Africa products include all types of gears, sprockets, splines and related product for industrial and heavy duty equipment and practically all applications related to power drive systems:

- Bevel Gears
- Spur Gears
- Worm Gears
- Helical & Internal Helical Gears
- Crown Gears
- Internal & External Splines.



CROWN WHEEL AND PINION, PLANETARY, SUN AND RING GEARS
FINAL DRIVE GEARS, DIFF HOUSINGS SPIDER CROSS KITS, SPIRAL BEVEL GEARS

FOR THE MINING, RAIL, HEAVY EARTH MOVING, BUILDING,
AND AGRICULTURAL INDUSTRIES



Cape Town Branch
Tel: 021 577 1030
Fax: 021 577 1131

083 657 0522 | carl@gearsforafrica.co.za
www.gearsforafrica.co.za

JHB Branch
Tel: 011 824 2017
Fax: 011 420 3314

Contact Details

Sales Manager & Editor
Janine Sargeant
083 456 4027

Design / Layout
Dylan McDonald
082 485 3001

Sales Contact
083 456 4027

Electronic Origination & Printing
ROC Media

The Editors welcome articles and photographs, which will be considered for publication on their merit.

Disclaimer: The Editors and Publisher do not necessarily endorse any views or statements made by contributors.

Janine Sargeant
083 456 4027
(FAX) 086 685 1258
janine@earthbroker.co.za

Physical Address:
Suite 16, Hillcrest Office park
2 Old Main Road, Hillcrest, 3610

Postal Address:
P.O. Box 2484,
Hillcrest,
3650

Banking Details:
Earthbroker
First National Bank
Hillcrest
Code: 223726
Account No.: 62295649308



Audit Bureau of Circulations
of South Africa

We are ABC accredited

Pamms Certificate no:
2A8DD9F60574FFC2A4EEEE01A



Manufacturer's names, numbers & descriptions are used for reference purposes only & it is not implied that any part listed is the product of the manufacturers.



Burgers Equipment & Spares

New CLG877H wheel loader



CHASE Technologies

Convert any electric forklift to lithium ion technology for maximum cost-saving and energy-efficiency benefits



Hitachi ABB Power Grids

Hitachi ABB Power Grids to provide Egypt's first advanced power quality solution to support grid expansion and rural development



KLEEMANN

KLEEMANN upgrades its screen programme



Mining Indaba 2021

Can mining houses compel employees to be vaccinated?



Manitou Southern Africa

Your partner in material handling

Contents

Advertisers Index	92-93	Marsay Equipment	69
All Africa Supplies	46-47	McKenzie Plant	24
AmPlant	10	Mid Plant Services	71
Associated Equipment	48-49	Mzantsi Transmissions	22
Atlas Masjiene	6	New Beginning Designs	53
Bell Equipment	43,100	One Stop Procurement	61
BLC Plant	50	P & R Earthmoving	23
BLC Trucks	51	Paramount Equipment	36
BLC Parts & Components	52	Paramount Tracks	37
Blumaq South Africa	38-39	Plant Finder	54-55
Bulk Machine Hire	8	Power Transmission Technology	58
Cat ER	24	Prime Plant	16
Catech Engineering	30	Queensburgh Plant Sales	99
Centrax	18-19	Ramm Parts	42
CTC Plant Company (PTY) Ltd	26	Rhino Excavator Hammers	70
Dozer Parts	72-73	Ruspet Exhausts	6
Dura Equipment Sales	62-63	Safety Grip	11
Dura Parts	64-65	Shin Li Trading	20-21
Earthmoving Machine Sales	80-81	Sintech	9
Earth Mach	59	Spec-Cast Engineering	22
East Coast Gears	10	Spec-Cast Wear Parts	66-68
ESP	12-15	STM Mining	34-35,75
Filter Centre	10	TJB Earthmoving	78
Gears for Africa	2	Tambani Hydraulics	31
Industrial Plant Solutions	79	Tractor Grader Supplies	56-57
ITR Africa	32-33	The Seat Connection	76
Inmine - Inala Mining Services	40-41	Turboworks	17
Kemach McCloskey	7	Vortex Transmissions	74
Lee's Dozers	28-29	Weichai & SEM Parts	77
Liugong-Burgers	1,45	Wearpact	60
LNE Agri Earth (Pty) Ltd	25	WesTrac CAT	76
MAE Equipment	27	Machine Classifieds	88-91
Manitou Southern Africa	5	Quick Reference	95-98



YOUR PARTNER IN MATERIAL HANDLING

MANITOU
SOUTHERN AFRICA

Manitou Southern Africa, headquartered in Johannesburg, has served the Southern African market for over 50 years. Manitou prides itself on a customer centric approach, in the form of as-sessing what the customer requires for their material handling solution, and completing a custom-er needs analysis. Manitou is able to provide packaged solutions to suit the specific requirements of the customer including full maintenance-leased, demo-stock and short-term rental equipment. The essence of the Manitou brand is safety, reliability, versatility, efficiency and manoeuvrability – the essence of what is required for businesses to grow in the current economic conditions.

Manitou offers an extensive, reliable range of telehandlers, pallet handlers, rough terrain forklifts, forklifts, access platforms, skid steer loaders and backhoe loaders. Partnered with an array of specialised attachments for construction, farming and mining activities, such as forks, bale han-dlers, various buckets for construction and agriculture, concrete mixers, tyre handlers to name a few, Manitou is versatile, reliable and production focussed machines you can have on-site ensur-ing you an optimum return on investment.

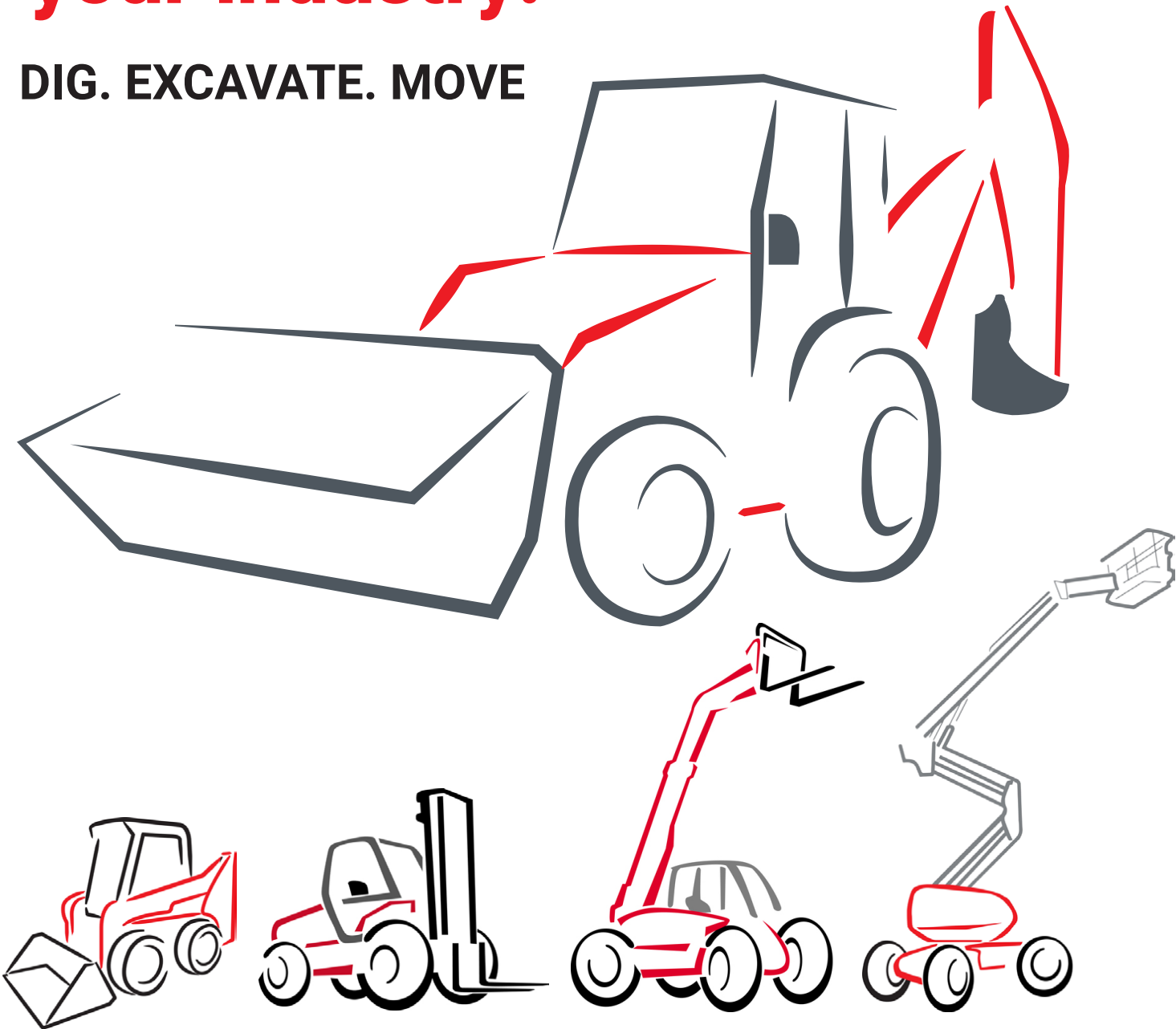
Manitou's comprehensive range of machines are supported nationally with a world-class service and a support network to ensure maximum performance, uptime and productivity. Through their dealer network and Manitou Centres, experienced maintenance teams are on standby 24/7, 365 days a year. A 95% parts availability over the counter ensures that all units can achieve maximum uptime. Training options (customer site based or Manitou office based) are also available to em-power the customer and their operators to get the most out of their Manitou machine in a safe and productive manner.

For more information, visit www.manitou.co.za to locate a dealer near you or call on 010 601 3000.



Versatile applications for your industry.

DIG. EXCAVATE. MOVE



Rental



Workshop



Product
Support



Sales



Training



Parts

MANITOU SOUTHERN AFRICA

Tel: +27 10 601 3000 **Address:** Proton Industrial Park, Proton Street, Chloorkop
Email: info.msa@manitou-group.com | www.manitou.co.za
Represented throughout the African continent through our network of dealers.





Corner of Great North & Stanley Road
Brentwood Park AH, Johannesburg
Dewald Hattingh: +27(0) 72 547 2198 +27(0) 11 973 3737



CATERPILLAR 140G
R1 200 000,00 + VAT



CATERPILLAR 950G
R670 000,00 + VAT



CATERPILLAR 330D
R1 500 000,00 + VAT



CATERPILLAR D4H
R550 000,00 + VAT



CATERPILLAR 924G
R550 000,00 + VAT



CATERPILLAR 317
R450 000,00 + VAT



SHANTUI SD13
R450 000,00 + VAT



CATERPILLAR 938F
R480 000,00 + VAT

ATLASMASJIENE.CO.ZA | INFO@ATLASMASJIENE.CO.ZA

Russell at Head Office
Tel: 011- 827 2824/6
Fax: 011- 827 2850
russell@ruspet.co.za
felicity@ruspet.co.za

WE MUFFLE THE INDUSTRY
RUSPET EXHAUSTS
MANUFACTURERS OF TRUCK, BUS, EARTHMOVING & GENERATOR EXHAUSTS

Ruspet Durban Branch
Storm Hill
Cell: 081 737 1598
storm@ruspet.co.za



ALL OUR EARTHMOVING SILENCERS ARE MADE TO OEM SPEC.
WE HAVE NUMEROUS SPECIFICATIONS FOR CATERPILLAR, KOMATSU AND BELL ETC.



FIELD TESTED **WORLDWIDE**

Kemach Equipment offers a range of McCloskey Crushers, Screens, Stackers and Washing Plants to suit your requirements.

- Robust and reliable mobile crushers for the materials processing industry. The high performance range of jaw, impact, and cone crushers combine productivity with outstanding durability to achieve the most efficient levels of product reduction across all crushing applications.
- Mobile Screeners are high capacity, heavy duty, versatile machines built based on the industry leading "High Energy" screenbox. With the largest screening areas in their class, the S-Series and R-Series screeners are designed to give customers high output and durability in the most demanding conditions, and deliver high production across industries.
- Stacking Conveyors and Feeders provide material stockpiling solutions that maximize the efficiency of mobile screening and crushing plants. Tracked or wheeled, McCloskey conveyors deliver high stockpile capacity and less downtime across every application.



KEMACH

McCloskey INTERNATIONAL

E Q U I P M E N T

sales@kemach.co.za

www.kemach.co.za

Best Business Decision

**BMH IS OFFERING THE FOLLOWING EQUIPMENT FOR SALE.
ALL EQUIPMENT WAS PURCHASED NEW FROM THE RELEVANT O.E.M.
COMPLETE REPAIR AND MAINTENANCE HISTORY AVAILABLE UPON REQUEST.**



1 x HITACHI ZX400LCH-5G HYDRAULIC EXCAVATOR
Year Model: 2016
Hours (SMR): 14 880



2 x HITACHI ZX330LC-5G HYDRAULIC EXCAVATORS
Year Model: 2017
Hours (SMR): 9090 & 15 139



6 x BELL B30D ARTICULATED DUMP TRUCKS
Year Model: 2008 / 2011 / 2013
Hours (SMR): Between 10 000 – 25 000 hours

Prices available on request. Viewing of equipment can be arranged.

Contact Person:
Neil Britz - +27 66 197 0178





ALLISON
TRANSMISSION
DISCS

ALLISON
SEAL KITS



ORIGINAL
EQUIPMENT
SUPPLIER



www.sintech.co.za

+27 (0)11 823 2359



www.AmPlant.co.za

SPECIALISED PLANT HIRE



www.AmPlant.co.za



Asphalt Equipment / Earthmoving Equipment
Milling Machines / Recyclers etc

Contact - Eddie Simpson
Office : 015 293 1221 ext 224 / Cell : 082 904 7694
Email : simpsons@amplant.co.za

Quality used
plant for sale



SPM Engineering Services cc
east coast gears

**Specialising in earthmoving
power transmission rebuilds of:**

- Front end loaders
- Final drives
- Drop boxes (transfer case)
- Differentials etc.

**MANUFACTURE OF ALL
GEARS AND REPAIRS**





**REPAIR CARRIER
HOUSINGS/ HUBS**

Tel: 031 701 3500 | Cell: 083 383 4943 | Fax/Email: 086 224 3982
Email: eastcoastgears@gmail.com | 24 Henwood Road, Pinetown, KZN



Filter CENTRE

Leaders in Heavy-Duty Filtration



**Quality Lubricants
NOW IN STOCK**





Klenz
Pure Protection

www.filtercentre.com
info@filtercentre.com
031 700 9074





Proud Importer of SAILUN OTR and Giant OTR Range

SAILUN OFF-THE-ROAD TIRES
SUPERIOR PERFORMANCE
LOWEST COST-PER-HOUR

We stand behind every product with guaranteed performance
as every tire instills the SAILUN core value of “quality that drives productivity”



SH920
HIGHWAY
SERVICE

S930
E3/L3

S932
E3/L3

S933
E3

S941
E4

S945
E4/L4

S951
L5

S952
L5S



FOR ORDERS AND INFORMATION
OTR Sales Manager : TEWUS WESSELS
Cell : +27(83) 639 2290
EMAIL : tewus@safetygrip.co.za

Tel : +27(11) 708 6660
Address : Unit 1 Napoli close.
Cosmo Business Park, Cosmo City

www.espa.co.za

ESP THE PROVEN ALTERNATIVE



Multi-brand parts suitable
for **CATERPILLAR**
earthmoving machinery



BENEFIT FROM OUR 9 MONTHS WARRANTY PERIOD ON NEW PARTS

ESP Johannesburg
Tel: (011) 398-1700

ESP Benoni
Tel: (011) 845-2911

ESP Pretoria
Tel: (012) 804-6706

ESP Middelburg
Tel: (013) 246-2520

ESP Pinetown
Tel: (031) 705-4200

ESP Cape Town
Tel: (021) 945-1030

ESP Port Elizabeth
Tel: (041) 484-4575

ESP Bloemfontein
Tel: (051) 432-4501

ESP Kimberley
Tel: (053) 831-8349

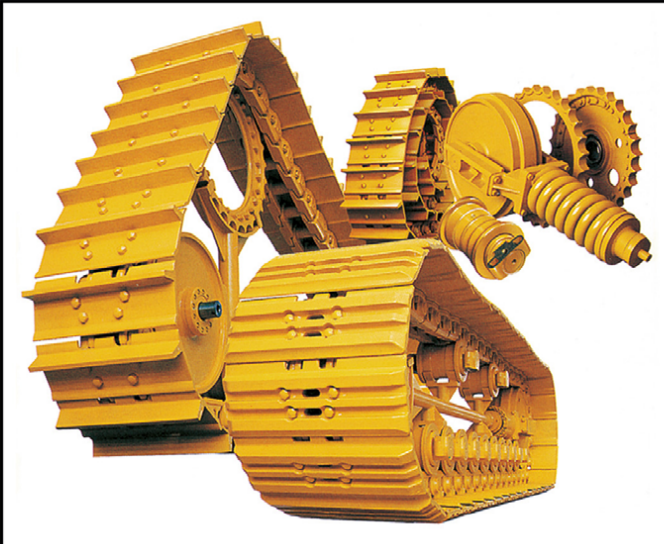


ISO 9001 Certified

Manufacturers' names, numbers, symbols and descriptions are used for reference purposes only and it is not implied that any part listed is the product of the manufacturers.

www.espa.co.za

ESP THE PROVEN ALTERNATIVE



BERCO undercarriage for earthmoving machinery



BENEFIT FROM OUR 9 MONTHS WARRANTY PERIOD ON NEW PARTS

ESP Johannesburg
Tel: (011) 398-1700

ESP Benoni
Tel: (011) 845-2911

ESP Pretoria
Tel: (012) 804-6706

ESP Middelburg
Tel: (013) 246-2520

ESP Pinetown
Tel: (031) 705-4200

ESP Cape Town
Tel: (021) 945-1030

ESP Port Elizabeth
Tel: (041) 484-4575

ESP Bloemfontein
Tel: (051) 432-4501

ESP Kimberley
Tel: (053) 831-8349



ISO 9001 Certified

Manufacturers' names, numbers, symbols and descriptions are used for reference purposes only and it is not implied that any part listed is the product of the manufacturers.

www.espa.co.za

ESP THE PROVEN ALTERNATIVE



Multi-brand parts suitable for
KOMATSU
earthmoving machinery



BENEFIT FROM OUR 9 MONTHS WARRANTY PERIOD ON NEW PARTS

ESP Johannesburg
Tel: (011) 398-1700

ESP Benoni
Tel: (011) 845-2911

ESP Pretoria
Tel: (012) 804-6706

ESP Middelburg
Tel: (013) 246-2520

ESP Pinetown
Tel: (031) 705-4200

ESP Cape Town
Tel: (021) 945-1030

ESP Port Elizabeth
Tel: (041) 484-4575

ESP Bloemfontein
Tel: (051) 432-4501

ESP Kimberley
Tel: (053) 831-8349

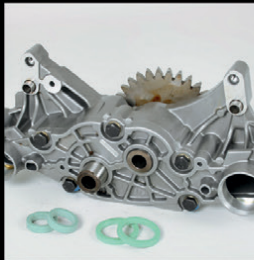
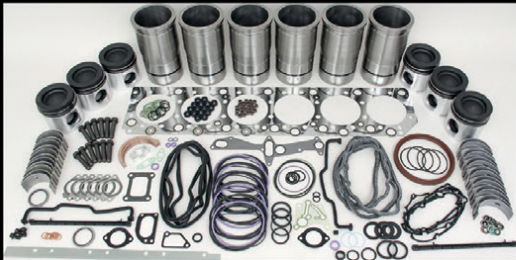


ISO 9001 Certified

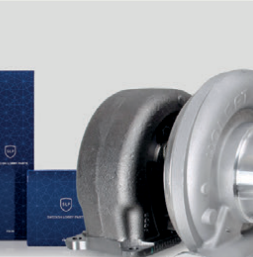
Manufacturers' names, numbers, symbols and descriptions are used for reference purposes only and it is not implied that any part listed is the product of the manufacturers.

www.espa.co.za

ESP THE PROVEN ALTERNATIVE



replacement parts
suitable for **VOLVO**
earthmoving machines



ADT A20, A25, A30, A35, A40 • Wheel Loader L60, L70, L90, L110, L120, L150, L180
Excavator EC210, EC240, EC290, EC360, EC460 • TLB BL61, BL71

BENEFIT FROM OUR 9 MONTHS WARRANTY PERIOD ON NEW PARTS

ESP Johannesburg
Tel: (011) 398-1700

ESP Benoni
Tel: (011) 845-2911

ESP Pretoria
Tel: (012) 804-6706

ESP Middelburg
Tel: (013) 246-2520

ESP Pinetown
Tel: (031) 705-4200

ESP Cape Town
Tel: (021) 945-1030

ESP Port Elizabeth
Tel: (041) 484-4575

ESP Bloemfontein
Tel: (051) 432-4501

ESP Kimberley
Tel: (053) 831-8349



ISO 9001 Certified

Manufacturers' names, numbers, symbols and descriptions are used for reference purposes only and it is not implied that any part listed is the product of the manufacturers.



**FIELD
SERVICES
NOW
AVAILABLE**



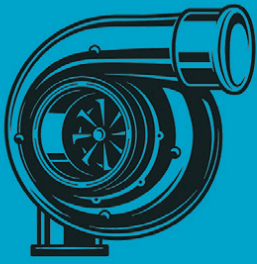
Primeplant (Pty) Ltd

Tel: 011 979 4853 Fax: 011 396 1653

www.primeplant.co.za



We specialize in the repair & maintenance of **CAT** TLB's



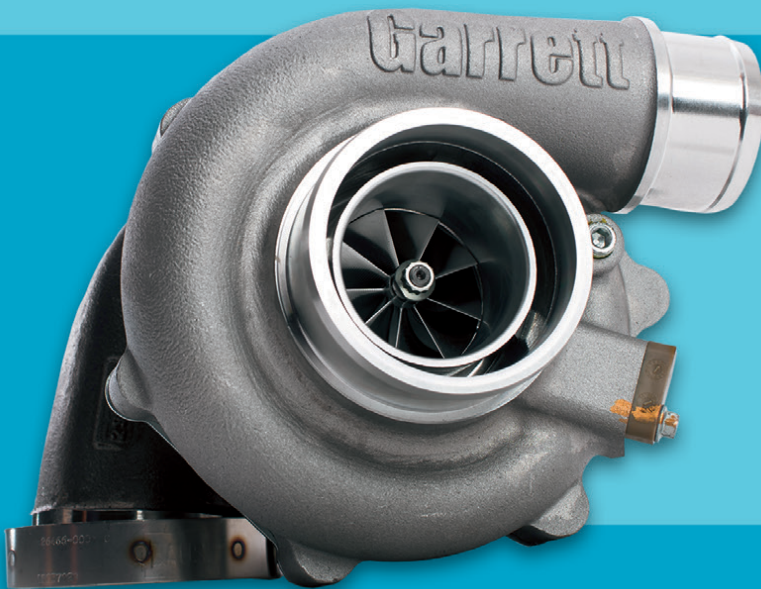
TURBOWORKS

"Best quality turbochargers - no compromise"

For all Construction and Mining machine turbocharger requirements, contact TURBOWORKS for the best and most cost-effective solution.

TURBOCHARGERS

- New
- Reconditioned, service-exchange
- Repairs



SECTORS

- Mining
- Plant hire
- Transport
- Agriculture
- Passenger vehicle
- Generators

**POPULAR SERVICE-EXCHANGE TURBOCHARGERS,
AVAILABLE FOR IMMEDIATE DELIVERY.**



- All makes and models
- 12 Months warranty
- Free "Strip-and-quote"
- Pick-up and deliver
- Supplying the entire African continent



57 Adriana Crescent, Gateway Industrial Park, Rooihuiskraal, Centurion

Tel: +27 12 653 7507

Email: sales@turboworks.co.za

www.turboworks.co.za

After-hours: +27 82 824 8037



**ON THE RIGHT
TRACK WITH**

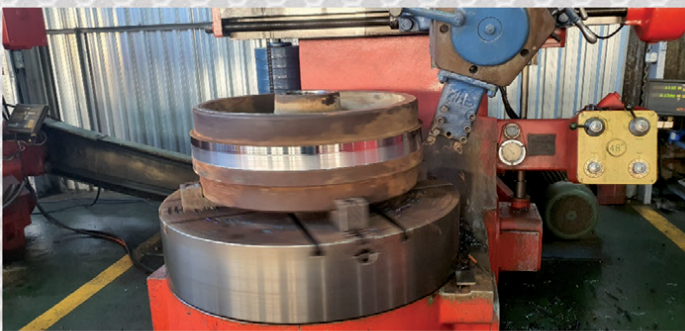
CENTRAX
Since 1974
www.centraxsa.com

Head Office: Tel: (011) 392 5055 / (011) 392 5056 / Fax: (011) 392 3091
Durban Branch: Tel: 086 123 6872 / Fax: 086 529 4683 / Steve: 083 613 0664

EXPERIENCE THE CENTRAX WORLD CLASS CONVERSION & REBUILD PROCESS
YOUR ONE STOP UNDERCARRIAGE SHOP



**DOUBLE FLANGE
ROLLERS**



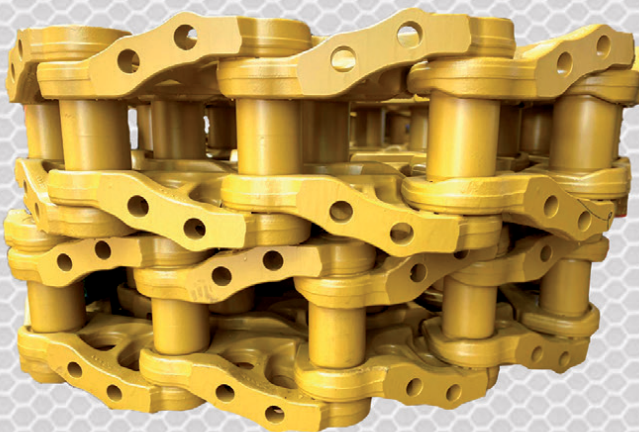
**SINGLE FLANGE
ROLLERS**



IDLERS



GROUSER SHOES



LINK ASSEMBLY'S



SPROCKET SEGMENTS



SPROCKETS

“LET’S DO THIS”

Manufacturers names, numbers and descriptions are used for reference purposes only & is not implied that any parts listed is the product of these manufacturers.



**ON THE RIGHT
TRACK WITH**

CENTRAX
Since 1974
www.centraxsa.com

Head Office: Tel: (011) 392 5055 / (011) 392 5056 / Fax: (011) 392 3091
Durban Branch: Tel: 086 123 6872 / Fax: 086 529 4683 / Steve: 083 613 0664

EXPERTS IN UNDERCARRIAGE & WEAR PARTS

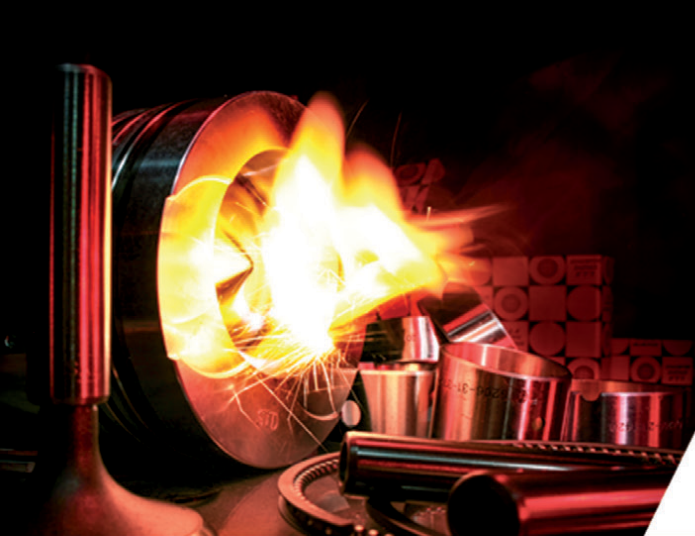
OUR TEAM OF TRAINED EXPERTS WILL KEEP YOUR EQUIPMENT ON TRACK



320C EXTENDED BOOM EXCAVATOR FOR HIRE. CONTACT TREVOR: 083 608 5550

**CENTRAX - YOUR MARKET LEADER IN THE SUPPLY OF ALL YOUR BUCKET
PROTECTION AND WEAR PARTS, ASSURING YOU OF PREMIUM COST PER HOUR
PERFORMANCE ACROSS OUR COMPREHENSIVE PRODUCT RANGE**

Manufacturers names, numbers and descriptions are used for reference purposes only & is not implied that any parts listed is the product of these manufacturers.



SHIN LI
TRADING ©



*We Specialise in
Japanese & Korean
Earthmoving Spares*

ENGINE SPARES

Liner Kits, Gasket Kits, Valves & Guides,
Water Pumps, Oil Pumps, Crank & Cam Shafts,
Engine Bearings & Bushings



Mitsubishi
Komatsu
Doosan
Nissan
Isuzu
Hino

HYDRAULIC PARTS

Kawasaki Pumps

New and Complete



Final Drives

20 Ton Excavator
Final Drive Parts
& Complete Units



Komatsu Gear Pumps

Transmission Pumps
Steering Pumps
Main Pumps



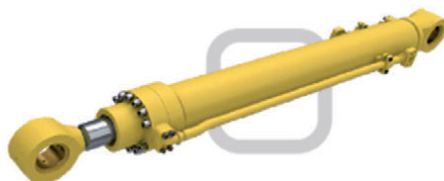
Kawasaki Rotating Groups

K3V and K5V Series
Inner Parts
Rotating Groups
Seal Kits



Komatsu Cylinders

Complete Cylinders
Seal Kits



WWW.SHINLITRADING.CO.ZA

Email:

sales@shinlitrading.co.za (Chris)
sales2@shinlitrading.co.za (Wimpie)
sales3@shinlitrading.co.za (Martin)
sales4@shinlitrading.co.za
sales5@shinlitrading.co.za (Steven)

Address: 67 High Road

Bredell A/H
Kempson Park

Tell:

011 396 1081
011 552 5900 /1/2

Fax:

086 666 2537



*Working hard,
so you don't have to.*

WWW.SHINLITRADING.CO.ZA

UNDERCARRIAGE

Track Links



Sprockets



Idlers



Track & Carrier



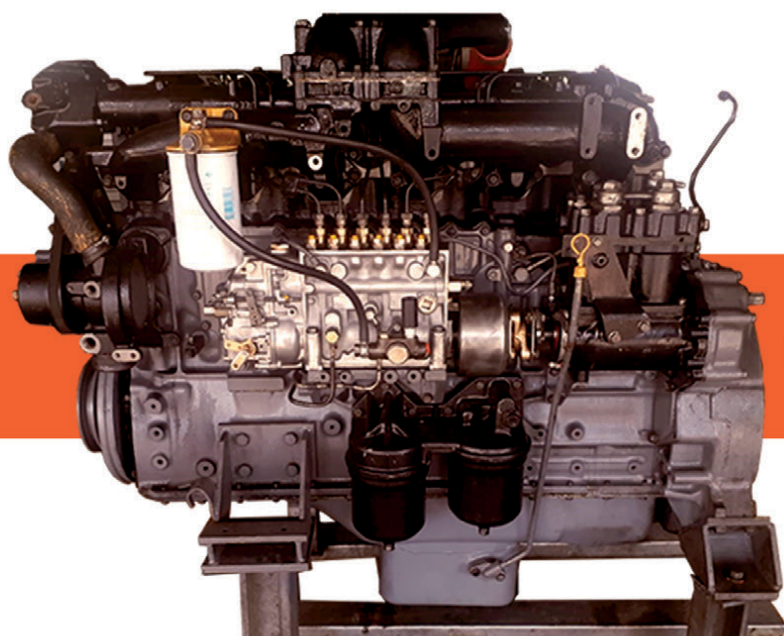
Rollers



Track Plates

Bolts & Nuts

**Genuine Hyundai
20 Ton Track Frames**



6D22T FOR SALE

Address: 67 High Road
Bredell A/H
Kempton Park
Tell: 011 396 1081
011 552 5900 /1/2
Fax: 086 666 2537

Scan the QR Code
to see our website:



**SHIN LI
TRADING** ©



SPEC-CAST ENGINEERING

Trusted to deliver

Bulk Materials Handling Products

Bucket Elevators



Steel Buckets

Suitable for elevating sharp, bulk density materials



HDPE Buckets

Suitable for handling large volumes of all types of grains, feed and most food products



Nylon Buckets

Suitable for high impact & abrasion resistance. Better heat resistance and handling hot, abrasive and sticky materials

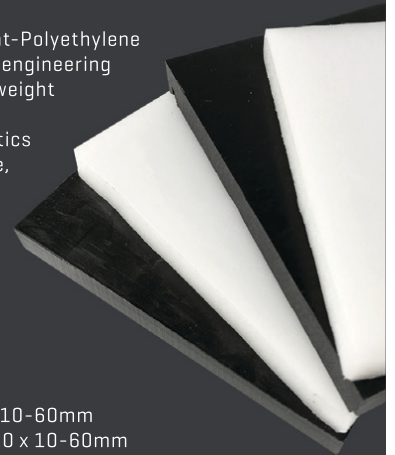
HDPE & UHMWPE Sheets

Ultra-High-Molecular-Weight-Polyethylene (UHMWPE) is thermoplastic engineering material, and its molecular weight can reach 4.5 to 9 million. It combines many characteristics such as abrasion-resistance, impact resistance/absorption, chemical corrosion resistance, low temperature resistance and self-lubrication etc.

Available in Black or White

HDPE SHEET: 2000 x 1000 x 10-60mm

UHMWPE SHEET: 3080 x 1220 x 10-60mm



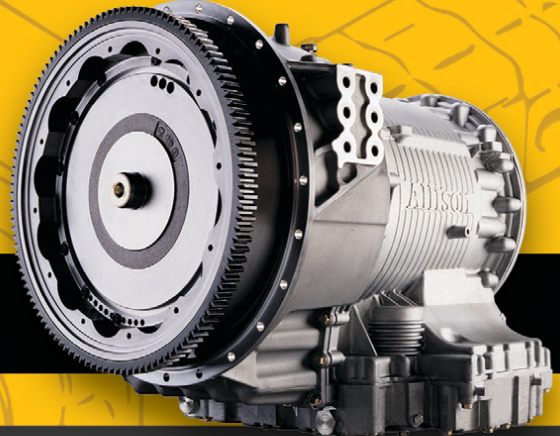
Contact our Bulk Materials Handling Specialist: Brian Jansen
Cell: +27 71 147 6868 | Email: brianj@spec-cast.co.za | Tel: +27 11 396 1713/7 | www.spec-cast.co.za



MZANTSI TRANSMISSIONS

6 Van der Bijl Street, Alrode South, Alberton

We offer specialised transmission repairs for heavy duty & on highway machines



WE OFFER SPECIALISED TRANSMISSION REPAIRS FOR HEAVY DUTY & ON HIGHWAY MACHINES

**BELL • TEREX • CAT • JOHN DEERE
HITACHI • DAEWOO • ZF • ALLISON • CLARK • FUNK**

We offer dyno testing on the following boxes:

**ZF - 4WG92, 4WG94, 4/6WG180/200/210/310
Allison - MD3560, HD4560**

**WE PURCHASE
2ND HAND TRANSMISSIONS**

**Bell B17B, B20B, B25B, 1206 & B40D
Transmissions in stock**

Email: info@gearboxes.me | **Tel:** 011 868 5130 | **Fax:** 086 634 7904 | **Cell:** 071 684 5784



Scott : +27 10 500 2167

scott@prearthmoving.com

www.prearthmoving.com

YOUR EARTHMOVING COMPONENT SPECIALIST

No. 170 - 3rd Avenue, Bredell
Kempston Park, 1619.
South Africa

ATTACHMENTS • AXLES • BREAK GROUPS • CYLINDERS • ENGINES • FINAL DRIVES • G.E.T. • HYDRAULIC PUMPS • NEW PARTS • POWER TRAINS • TRANSMISSIONS • UNDERCARRIAGE

bd10zg



KOMATSU GD655
Motor Grader

bd64xj



KOMATSU HM400-3
ADT
Stripping for spares

bh71br



CATERPILLAR 6030
Dismantling for Spares
All components Available

bh71bq



KOMATSU PC3000-6
Dismantling for Spares
All components available

bf56aq



CATERPILLAR C9
Industrial Engine

be93hl




CATERPILLAR C27
Engine for CAT D10T
- Rebuilt -

bi06fj



CATERPILLAR D7 ; D8; D10
Track Frame Available
-Rebuilt-

ba40yp



CATERPILLAR 16M
Transmission
- Rebuilt -

bd32lf



2011 KOMATSU D375A-6
Dozer
14,876hrs

be62ua



KOMATSU HD785-5
Wheel Loader
Stripping for Spares

bd64xm



KOMATSU WA800-3
Wheel Loader
Stripping for spares

bd64xl



CATERPILLAR 988H
Wheel Loader
Stripping for spares

be62ue



CATERPILLAR D9T
Crawler Dozer
Stripping for Spares

bi06fk



CATERPILLAR
R1600 Axle

bg57pl



CAT 336D & 320D
New Tracks

be62ug



KOMATSU GD825
Motor Grader
Stripping for Spares



Kyle Silvestre
+27 10 823 6385

sales@prearthmoving.com



Ladislav Mutondo
+27 10 823 7322

ladislav.l@prearthmoving.com



Greg Gavazzi
+27 10 823 6276

greg@prearthmoving.com



Conrad Snyman
+27 10 823 7972

conrad@prearthmoving.com



1 x HYUNDAI 300LC-9S
Excavator



KOMATSU WA320-6
9690 Hours



LOWBED
Two axle trailer



KOMATSU WA380-6
F.E.L.

McKenzie

PLANT SALES

Contact
Stuart McKenzie
for more details:

Tel:
033 212 2181

Cell:
082 558 7901

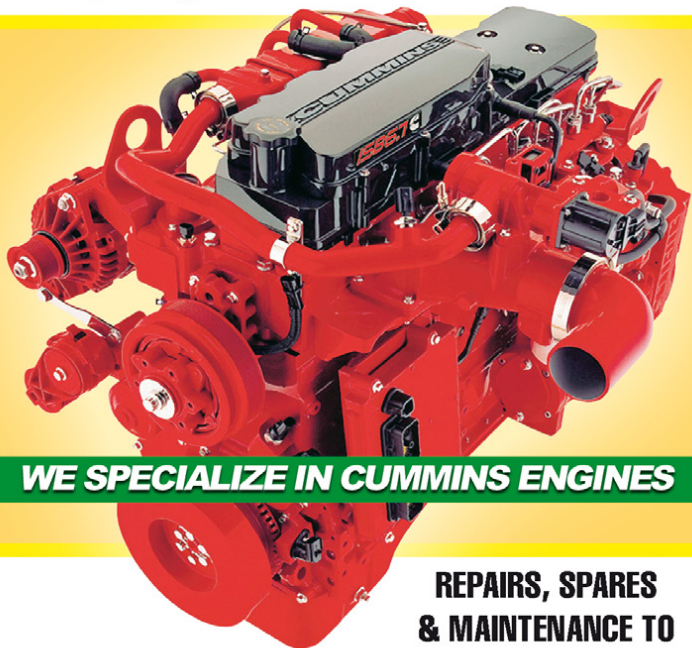
Email:
sjm@mckenzieplant.co.za



You can now find us on Facebook, go to
www.facebook.com/mckenzieplanthire

Earthmoving Specialist

Old & New
Generation Experience



WE SPECIALIZE IN CUMMINS ENGINES

Full Diagnostic
Troubleshooting

**REPAIRS, SPARES
& MAINTENANCE TO
LEADING EARTHMOVING
MACHINERY**

Carlos Caroto: 079 519 6769 | Email: jennycaroto@live.co.za

Earthmoving Specialist



**OLD & NEW
GENERATION EXPERIENCE**

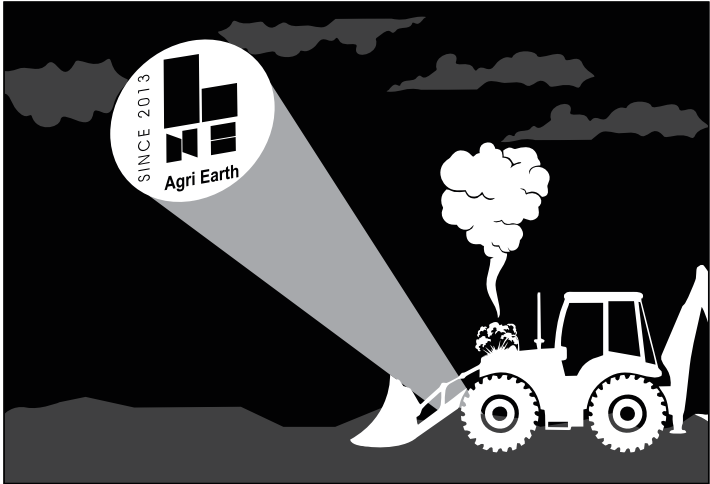


FULL DIAGNOSTIC TROUBLESHOOTING

**REPAIRS, SPARES & MAINTENANCE TO
LEADING EARTHMOVING MACHINERY**

**SPECIALISING IN: CAT ECPC, ICM COUNTERSHIFT
& POWERSHIFT TRANSMISSION REBUILDING**

Carlos Caroto: 079 519 6769 | Email: jennycaroto@live.co.za



SINCE 2013



+27 (0)861 888 008

+27 (0)83 327 3237 (A/H)



LNE@LNE-AgriEarth.com

www.LNE-AgriEarth.com

Agri Earth

www.LNE-AgriEarth.com



CARRARO

Spare Parts Authorized Dealer

A black and white illustration of a person in a suit holding a large video camera and a microphone, appearing to be on a phone call. A speech bubble next to them says "You've reached LNE, how may we assist you?".

A black and white illustration of a delivery van with "FAST DELIVERY" written on its side, shown in motion with speed lines.

A black and white illustration of a person in a uniform and cap, holding a box.

A black and white illustration of a hand placing a box on a surface, with radiating lines indicating action or impact.

A black and white illustration of a tractor with smoke coming from its engine. A person is jumping in the air with a speech bubble that reads "Downtime minimized! Fantastic service!!!".

Your Sourcing Solution. For info on advertising in the next issue, contact Janine - 083 456 4027

volume 17 issue 3

Page 25



C.T.C. PLANT COMPANY
SINCE 1992

PARTS AVAILABLE FROM STRIPPED UNITS

BELL

- BELL 1806D
- BELL 770CH
- BELL B20B
- BELL B20C
- BELL B25B
- BELL B25C
- BELL B25D
- BELL HD1430
- BELL L1806E
- BELL B30D
- BELL B30E

SUMITOMO

- SUMITOMO SH360

DYNAPAC

- DYNAPAC CC142 DOUBLE DRUM

BOMAG

- BOMAG BW212D ROLLER

HALLA

- HALLA HE220LC

DOOSAN

- DOOSAN DX300

KOMATSU

- KOMATSU WA200-5
- KOMATSU WA320-3
- KOMATSU WA380-5
- KOMATSU WB93R
- KOMATSU WB93R

CASE

- CASE 1845C
- CASE 580SR
- CASE CX360

JCB

- JCB 3CX
- JCB JS360

VOLVO

- VOLVO A25C
- VOLVO A40E
- VOLVO BL71
- VOLVO EC210
- VOLVO L90E

CATERPILLAR

- CATERPILLAR 216B
- CATERPILLAR 226B
- CATERPILLAR 740B
- CATERPILLAR D8R
- CATERPILLAR 320C
- CATERPILLAR 320D
- CATERPILLAR 323D
- CATERPILLAR 325D
- CATERPILLAR 330D
- CATERPILLAR 350L
- CATERPILLAR 424D
- CATERPILLAR 428C
- CATERPILLAR 428E
- CATERPILLAR 428F
- CATERPILLAR 725
- CATERPILLAR 924G
- CATERPILLAR 938F
- CATERPILLAR 938H
- CATERPILLAR D9R
- CATERPILLAR D9N

HAMMER PARTS & MOILS AVAILABLE

FOR SUPERIOR QUALITY PARTS ON ALL MAJOR BRANDS

Cnr. Michigan & Manchester
Streets, Airport Industria,
Cape Town, South Africa

Mark Swanepoel: +27 82 825 6966
Roy Heather: +27 61 421 9184
www.ctcplant.com



THOMAS MITTAG
Cell: +27 72 545 6223
Mail: info@mae-equipment.com

MAE Equipment
Witbank/Riverside
(Yard)

www.mae-equipment.com

MAE

EQUIPMENT

CAT D9R DOZER



2013 model
3 units available / new serviced
Call for Price

CAT D8T DOZER



2011 model
import unit
Call for Price

KOMATSU D375A-6



2011 model
refurbished & new undercarriage
Call for Details

KOMATSU D375A-5



2008 model / "as is"
or refurbished 2 units available
Call for Price

KOMATSU D275 DOZER



2012 model
5.700h / new undercarriage
Call for Price

KOMATSU D155AX-7



2013 model
refurbished / imported EU
Call for Price

CAT 349F



2015 model
5.089h (read-off) / import unit
Call for Price

CAT773F WATERBOWSER



2008 model
Call for Price

ATLAS-COPCO D65-FLEXIROC



2015 model
refurbished
Call for Price

ATLAS-COPCO D65 SMARTROC



2015 model
refurbished
Call for Price

ATLAS COPCO DM30 DRILL RIG



2012 model
ready for production
Call for Price

SANDVIK DP1500 PANTERA



2010 & 2012 model
refurbished
4 units available

VOLVO A30D



2008 model
conversion to waterbowser
ZAR 1.550.000

WE BUY ALL KINDS OF EARTHMOVING, CONSTRUCTION OR MINING MACHINERY

WE PAY CASH WITHIN 24 HOURS

PLEASE CONTACT OR SEND OFFERS TO INFO@MAE-EQUIPMENT.COM

„Your Partner for new & used Machinery and Equipment.“

www.mae-equipment.com

YOUR **PRIME** SELECTION OF CAT DOZERS



CATERPILLAR D8R



CATERPILLAR D9T



CATERPILLAR D10T

WE OFFER OUR CUSTOMERS AN IMPRESSIVE FLEET OF OVER 25 CATERPILLAR DOZERS RANGING FROM D8-D10T'S TO CHOOSE FROM AND THEY ALL BOAST LOW HOURS.

FLEET OF OVER 25 DOZERS AVAILABLE FOR HIRE



Level 2 BBBEE

24/7 HOURS SUPPORT

LEE'S DOZERS

+27 71 687 9274

Included in our services we offer a highly skilled service team with 24/7 availability to offer repairs and support on call to ensure your hire is well maintained.

- **OUR FLEET IS MINE COMPLIANT**
- **OUR RATES ARE HIGHLY COMPETITIVE**
- **FLEET OF OVER 25 DOZERS AVAILABLE FOR HIRE**



We offer our customers an impressive fleet of over 25 Caterpillar Dozers ranging from D8's – D10T's fully reconditioned to OEM specifications, boasting low hours. Included in our services – we offer a highly skilled field service team with 24/7 availability to offer repairs and support to our valued clients ensuring your hire is well maintained with minimal down time.

Lee Bray: +27 (0) 71 687 9274 / Petrus Tambani: +27 (0) 82 908 2352 / Email: leeb@leesdozers.co.za / petrus@leesdozers.co.za
12 Roller Street, Spartan, Kempton Park, 1619

leeb@leesdozers.co.za

www.leesdozers.co.za

MAINTENANCE & REBUILDS



QUALITY REBUILDS TO OEM SPECIFICATIONS

What separates us from our competitors is our ability to offer rebuilds once our dozers have reached a certain hourly lifespan. This includes stripping the dozer down to its frame and the full overhaul of all major components to OEM specifications - including the engine, torque converter, transmission, final drive, track frames, blades (rebuilt & fitted with additional liner ware package for blade life extension), push arms, hydraulics, cylinders, pumps and boilermaking, all inhouse.

We proudly supply quality rebuilds that provide a 2nd life at brand new dozer specs delivered to your site with our inhouse low bed.

FLEET OF OVER 25 DOZERS AVAILABLE FOR HIRE



Lee Bray: +27 (0) 71 687 9274 / Petrus Tambani: +27 (0) 82 908 2352
Email: leeb@leesdozers.co.za / petrus@leesdozers.co.za
12 Roller Street, Spartan, Kempton Park, 1619

www.leesdozers.co.za





BUCKETS: MPI/UT test and repair where necessary
Manufacture of all types of buckets / Repair and replacement of all parts on all makes of buckets: face shovels, lips, wrapper, leading edges, side plates, torque tubes and line boring

CATECH

Heavy Engineering Specialists

SPECIALISTS IN ALL EARTH MOVING AND MINING EQUIPMENT

Call: Lee Bray: +27 (0) 71 687 9274
Petrus Tambani: +27 (0) 82 908 2352
Johann Von Molendorff: +27 (0) 76 570 6308
Email: lee@cattam.co.za / petrus@cattam.co.za
johan@cattam.co.za



Manufacturers of: Tyre Handlers / Water Bowsers / Drill Rig Masts / Cable Realers

Rebuilds & Repairs: Track Frames / Buckets / Booms / Sprockets & Idlers / Car Bodies
Super Structures / Track Shoes / Sticks / Truck Bowls

General Engineering: Pins / Bushes / Flanges / Gears / Pinions



ISO 9001 :2015

Call: +27 (0)11 975 9631

Fax: +27 (0)11 975 4315

info@tambanihydraulics.com

Lee Bray: +27 (0) 71 687 9274

Petrus Tambani: +27 (0) 82 908 2352

Email: lee@tamhyd.co.za / petrus@tamhyd.co.za



Tambani Hydraulics has a very wide variety of Service Exchange units available, enabling us to service the Mining, Construction and Earthmoving Industries

Other Services We Offer, But Are Not Limited to Include:

- A 24hr Stand-By & Breakdown Service
- Component Service Supply & Repair
- Extensive, Industry Leading Warranty on All Our Products
- Engineering Workshop





ITR AFRICA

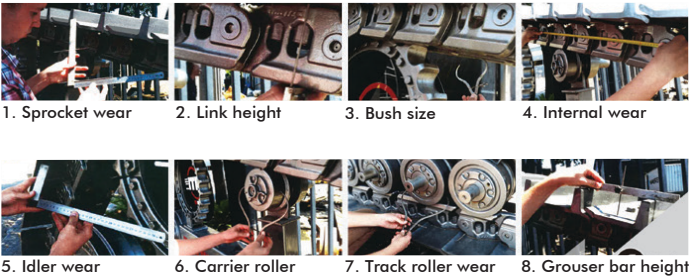
UNDERCARRIAGE MEASURING & WORKSHOPS



Undercarriage

The ITR undercarriage line includes chains, shoes, rollers, sprockets, idlers and segments manufactured within the group’s own production facilities. In addition to standard excavator and dozer applications, ITR undercarriage also covers asphalt road paving, drilling and logging machines. ITR’s flexible production and design expertise also allow for “tailor-made” products to suit any specialised application.

The ITR mini and compact undercarriage line also includes a strong selection of rubber tracks, bolt-on and clip-on rubber pads, rubber and polyutherane vulcanised shoes and city-pads (road liners).



1. Sprocket wear 2. Link height 3. Bush size 4. Internal wear
5. Idler wear 6. Carrier roller 7. Track roller wear 8. Grouser bar height

Undercarriage Measuring

ITR offers a complete undercarriage measuring service that provides a full analysis with recommendations, giving you the benefit of reducing cost per hour through preventative and scheduled maintenance.

Contact your nearest ITR branch today to schedule your appointment.

Undercarriage Workshops

ITR offers Undercarriage Repair, Maintenance and Rebuild Services out of our Service Centres in South Africa and Zambia. Services include remove and refit shoes, turn pins and bushes, re-strip grouser shoes, rebuild idlers, fit new pins and bushes and trackframe repairs.



Johannesburg
Tel: +27 (11) 614 0070
sales@itrafrica.com
Kathu
Tel: +27 (53) 723 2245
kathu@itrafrica.com

Cape Town
Tel: +27 (21) 905 7340
capetown@itrafrica.com
Pinetown
Tel: +27 (31) 941 1133
pinetown@itrafrica.com

Port Elizabeth
Tel: +27 (41) 451 2222
portelizabeth@itrafrica.com
Middelburg
Tel: +27 (13) 590 5614
middelburg@itrafrica.com

East London
Tel: +27 (43) 748 3541
eastlondon@itrafrica.com
Bloemfontein
Tel: +27 (51) 011 5620
bloemfontein@itrafrica.com

Namibia
Tel: +264 (83) 331 5160
namibia@itrafrica.com
Zambia
Tel: +260 (212) 213 867
zambia@itrafrica.com



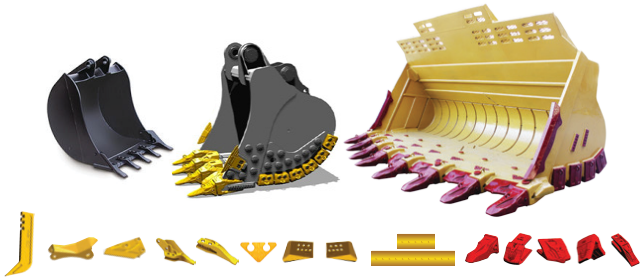
THE FIRST CHOICE EARTHMOVING SOLUTIONS PROVIDER IN SUB-SAHARAN AFRICA

www.itrafrica.com

MANUFACTURER’S NAMES, NUMBERS & DESCRIPTIONS ARE USED FOR REFERENCE PURPOSES ONLY & IT IS NOT IMPLIED THAT ANY PART LISTED IS THE PRODUCT OF THE MANUFACTURERS



GROUND ENGAGING TOOLS AND BUCKETS



The ITR GET line features on-going development of new product lines as well as high-performance, innovation-based, original solutions.

The ITR **UNIK** line has been designed for any and all applications where high penetration, impact resistance and increased wear life are essential. Unique features are an innovative and modern self-sharpening design, a reinforced pocket structure, increased side pin protection, high impact resistance and selected ITR steel composition, all ensuring excellent performance and an extended wear life.

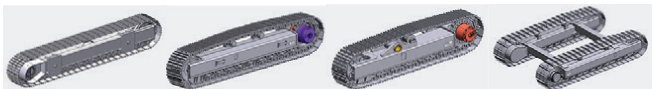
The **BYG Futura** Wear Technology Premium range is designed for mining machines up to 800 tons. The main features are its hammerless solutions that increase safety and reduce downtime, extra weight invested in reinforcing the key areas of the tooth where it has more exposure to wear, and its design with lateral and central ribs that facilitate the flow of material, significantly extending life while retaining its self-sharpening properties.

OILS AND LUBRICANTS



ITR has a range of quality lubricants that deliver superior engine protection and performance, for machines used in construction, industrial and marine sectors. ITR lubricants are formulated with highly refined base oils, extreme pressure agents, anti-wear and anti-corrosive resistance additives for smooth operation.

CRAWLER SYSTEMS AND TRACK FRAMES



ITR offers Complete Undercarriage Crawler Track Solutions for many applications: Drill Rigs, Screen Plants, Crushing Plants, Underground Applications and more. The Crawler System is supplied complete, including Final Drives & Travel Motors.

TRACK ONE side frames are available for machines with a total weight between 500 kg and 200 tons.

These frames are typically used for crushers, drilling machines, conveyors, road pavers and milling machines.

REPAIR PARTS



ITR has developed the widest range of repair parts available on the market for earth moving machines today. Engine parts such as crankshafts, connecting rods, pistons, cylinder heads, cylinder blocks, cylinder liners, engine valves. Hydraulic parts like gear pumps, piston pumps and hydraulic steering systems. Clutch parts, cooling system parts such as radiators, oil coolers and pumps. Torque converters and their relative components. Braking system parts such as calipers, discs and air compressors. Electric parts such as engine starters, alternators, switches, sensors, batteries and worklamps. Parts for transmissions, differential systems and final drives. Chassis parts such as equalizer bars, bogies and guards.



THE FIRST CHOICE EARTHMOVING SOLUTIONS PROVIDER IN SUB-SAHARAN AFRICA

www.itrafrica.com

MANUFACTURER'S NAMES, NUMBERS & DESCRIPTIONS ARE USED FOR REFERENCE PURPOSES ONLY & IT IS NOT IMPLIED THAT ANY PART LISTED IS THE PRODUCT OF THE MANUFACTURERS

GOOD USED EARTHMOVING PARTS AND EQUIPMENT

STM

MINING EQUIPMENT PTY(LTD)

Tel: (011)894-6192 / (011)894-3377
Fax: (011)894 7914
barney@stmmining.co.za
donovan@stmmining.co.za

Office Hrs: Mon-Fri 07h00-17h00



D375-5
STRIPPING FOR PARTS



FULLY REBUILT 140G GRADER
WITH WARRANTY



325C
STRIPPING FOR PARTS



980G FRONT END LOADER
FOR STRIPPING OR REBUILD



WA500-3 RUNNING BUT
FOR STRIPPING OR REBUILD



GOOD RUNNING 740
(B1P) SERIAL



GOOD RUNNING ZAXIS 200
UNDER 6 000 HRS



275-5
NO TRANSMISSION STRIPPING



938F
GOOD RUNNING MACHINE



950H
STRIPPING FOR PARTS



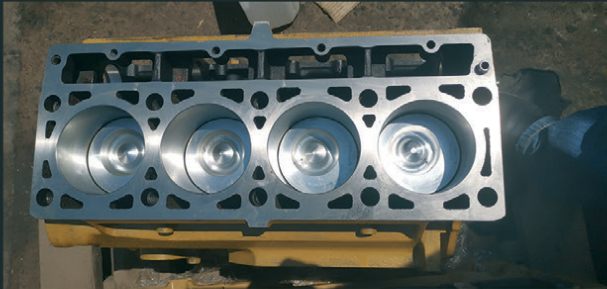
740 ADT DUMPERS X 2 RUNNING
FOR REBUILD OR STRIPPING

GOOD USED EARTHMOVING PARTS AND EQUIPMENT

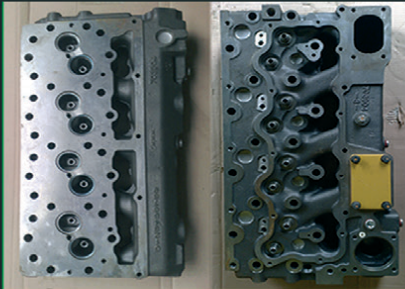


Tel: (011)894-6192 / (011)894-3377
Fax: (011)894 7914
barney@stmmining.co.za
donovan@stmmining.co.za

Office Hrs: Mon-Fri 07h00-17h00



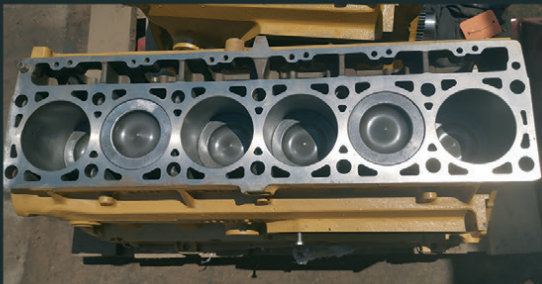
3114DI RECON SUB



HEADS TESTED & RECONDITIONED
3304 / 3306 / 3204 / 3116 / 3406 / 3412 / C9 / C13



REMAN SUB FROM CAT C9



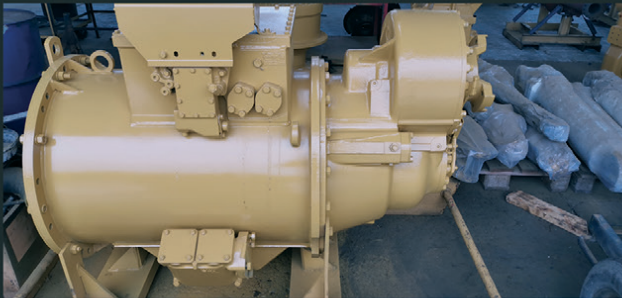
RECON 3126DI SUB



REMAN 3126 HEADS



D10T RECON
SERVICE EXCHANGE FINAL DRIVES



RECON 789C TRANSMISSION



CAT 140G TRANSMISSION
RECON SERVICE EXCHANGE



CAT 140G DIFF
RECON SERVICE EXCHANGE



D11R
FINAL DRIVE



988F-2 RECON
S/EXCHANGE T/CONVERTER



3412DI
REMAN SUB



D9T RECON FINAL DRIVE
SERVICE EXCHANGE

STRIPPED
ENGINES

3304/6
3204
3126
3406
3408
3412
3508
3512
3516

C6.4
C7
C9
C11
C13
C15
C18
C27
C32

MACHINES

EXCAVATORS

225
317B
318B
320B
325B
330B
320D
323D
330D

LOADERS

920
930
936G
938G
950A/H
966G
980F/G
988B

www.stmmining.co.za

PARAMOUNT EQUIPMENT

We are level 1 B-BBEE company with a National Footprint and SADC reach

We are a diversified company with extended offerings in the Manufacture and Supply of Machines for the mining and related industry.

We have been trading since 2013. We offer Professional Engineering Services to industry. We strive for innovation and utilize the best material available in the market and offer the best fit solutions for our customers. Understanding our customer requirements is important. We source and provide them with best engineering solutions that are suitable for their operations. Paramount has recently partnered with the manufacturer, Revathi Equipment Limited (REL), an India based company to service the African continent. Paramount Equipment is the Authorized REL Dealer and Distributor

INTRODUCING:



**AUTONOMOUS
MINING THE
WAY FORWARD**

REL C650

BLAST HOLE DRILL
DTH & ROTARY SERIES



REL (India) designs and builds a varied range of blast hole drills for the mining and construction industry, incepted in the year 1977 as Revathi CP Equipment limited the Indian Unit of Chicago Pneumatics USA. Since its inception REL has manufactured more than 2000 drills of different capacities, delivering quality holes drilled safely and accurately at the lowest cost.

Our commitment to continuous improvement and innovation drives our ongoing and growing African presence. Please feel free to contact us for more information about our industry-leading products and services.

Your Partner in Mining Equipment Solutions

Gauteng
32 Van Buuren Road
Hans Merensky Office Park
Bedfordview, JHB
Tel: 010 007 3258

Mpumalanga
2 Watt Street
Industrial Area
Middelburg
Tel: 010 007 3109

Northern Cape
Rietbok Street, Office 5
NS&R Building, Kathu
Tel: 082 902 6376 /
072 849 6970

Botswana
Plot 454
Jwaneng
Tel: 00 27 10 007 3258 /
+267 71 968 840



Contact us today on sales@paramounttracks.com or visit us online at www.paramounttracks.com

Proud partner of:





Paramount Tracks

Bedfordview
Head Office
32 Van Buuren Rd
Hans Merensky Office Park
Tel: 010 007 3258

Middelburg
2 Watt Street • Industrial Area
Middelburg
Mpumalanga
Tel: 010 007 3109

Northern Cape
Rietbok Street • Office 5
NS&K Building • Kathu
Tel: 082 902 6376
Tel: 072 849 6970

Botswana (Pty) Ltd
Plot 454
Jwaneng
Tel: 00 27 10 007 3258
Tel: +267 71 968 840

Postal Address: South Africa
P.O.Box 11735 • Aerorand
1070 • South Africa

Postal Address: Botswana
P.O.Box 2233 • Jwaneng
Botswana



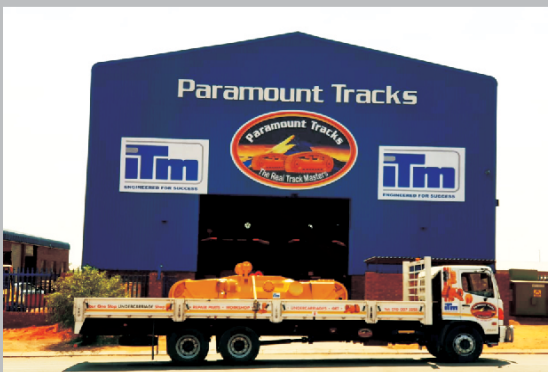
Email: sales@paramounttracks.com
Website: www.paramounttracks.com

Paramount Tracks is a diversified trading company that provides professional engineering services to the mining, plant and construction industries. We are a 100% black owned company and have presence in Johannesburg, Middelburg, Limpopo, Northern Cape and Botswana. We offer specialised services pertaining to the supply of all types of earthmoving undercarriage, GET, along with offering a repair solution for all bucket repairs, bowels, blade repairs, track frames etc.

We have the infrastructure to service large mining and construction companies. We supply a vast range of undercarriage that is suitable for all types of drill rigs and crawler equipment, along with wear parts that are suitable for most GET applications. We own a Track Workshop and Engineering Facility in Middelburg, Mpumalanga region & have developed strong relationships with the European undercarriage manufacturer ITM which is located in Italy. We currently service high end corporate clients in South Africa and have been appointed as the official ITM distributor for South Africa and Botswana through our Paramount Tracks Botswana entity. Paramount Tracks has been recognised as the official dealer of the Combi Wear Parts Ground Engaging Tools Range for South Africa who specialises in the manufacturing of this Swedish wear parts range and aims to offer our customers a premium product. We are the appointed Hardox Wearparts Centre in Middelburg, who is a member of SSAB and offer the following services:

- Cutting • Welding • Machining • Bending • Post-treatment • Perforation etc.

We aim to provide high productivity, along with low maintenance costs which is the core business for a Hardox Wearparts Centre.



THE OEM ALTERNATIVE

Our Vision

To be a regionally recognised professional engineering and technical services company dedicated to providing value added services to customers, from an engineering and supply of new undercarriage components perspective.. Paramount Tracks values are built on dedication, quality workmanship and excellent customer services that are based on sound engineering principles along with maintaining a safe and healthy working environment.

Our Mission

We undertake to uphold the following principles:
Quality parts and services
Develop and empower the community we operate within
To work to the highest quality standards possible
Shrive for continuous improvement

www.paramounttracks.com



www.blumaq.com

Follow us on:



Spare parts suitable for VOLVO

We offer a wide range of items with immediate delivery for your **VOLVO** earthmoving equipment.



Alternative spare parts for Caterpillar

We offer a wide range of items with immediate delivery for your **CATERPILLAR** earthmoving equipment.

Berco dealer in Spain, Zambia, Turkey and South Africa:



Contact:

+27 11 966 5092 **Johannesburg**
+26 096 0923 962 **Kitwe**
john.beukes@blumaq.com

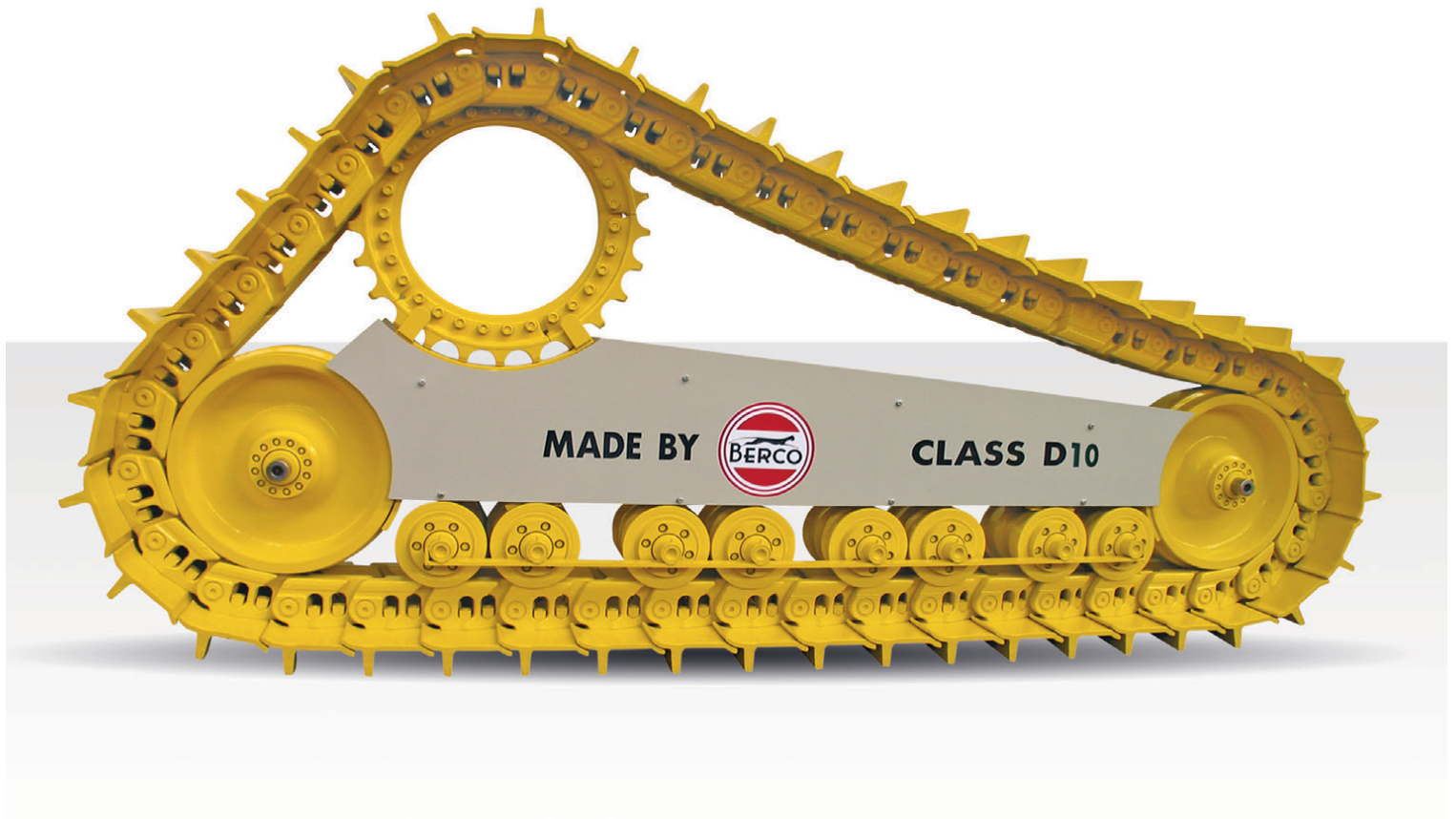
Caterpillar®, komatsu®, cummins®, volvo® and case® are trade brands registered by their owners and are only used for reference purpose of the application of our spare parts.

Branches in Spain: Alicante | Almería | Asturias | Barcelona | Galicia | Madrid | Mérida | Ponferrada | Sevilla | Tenerife | Zaragoza
Branches in the world: Chile | United States | France | Portugal | Turkey | China | Russia | Italy | Romania | South Africa | Zambia | Peru



www.blumaq.com

Follow us on:



Following our success as **Berco** product distributor in Zambia, Blumaq South Africa has now also been appointed a distributor for this quality product in South Africa.

Blumaq South Africa now also offers **Berco quality undercarriage parts and repairs** from our operation based in Wadeville, Johannesburg.

Our fully serviced Track Undercarriage workshops offers a full service including Turning of Pins & Bushes / Re-stripping of Grouser shoes / Track Link repairs / Idler and Roller rebuilds / Track Frame Rebuilds.

Contact us today for a free on site wear assessment of your undercarriage components.

Contact:

+27 11 966 5092 **Johannesburg**

+26 096 0923 962 **Kitwe**

john.beukes@blumaq.com

**Berco dealer in
Spain, Zambia,
Turkey and
South Africa:**



Caterpillar®, komatsu®, cummins®, volvo® and case® are trade brands registered by their owners and are only used for reference purpose of the application of our spare parts.

Branches in Spain: Alicante | Almería | Asturias | Barcelona | Galicia | Madrid | Mérida | Ponferrada | Sevilla | Tenerife | Zaragoza
Branches in the world: Chile | United States | France | Portugal | Turkey | China | Russia | Italy | Romania | South Africa | Zambia | Peru



inmine
Inala Mining Services (Pty) Ltd

Hennie Nelson
South Africa, Witbank
+27 82 414 1393
sales@inmine.co.za



VARIETY OF
CATERPILLAR & HITACHI ENGINES



CAT 16H GRADER ENGINE
RUNNER



CATERPILLAR 777 / 785
D11 TORQUE CONVERTERS



CAT 785 RECONDITIONED
& USED FINAL DRIVE



RECONDITIONED
CAT 773 DIFF

WWW.INMIME.COM

Plot 26 Naauwpoort, Benicon Park, Witbank 1036
Mpumalanga, South Africa

CAT 773F Stripping for parts



Available parts:

2 x Final drives	All suspension cylinders
1 x Diff	1 x Radiator pack
1 x Transmission	

CAT 773F Bowl



Stripping 2 x Cat 992G



**PLEASE ENQUIRE FOR
INFORMATION ON
AVAILABLE PARTS**

CAT 789C Used Engine



SET / RECONDITIONED CAT 6030 FACE SHOVEL CYLINDERS



**RH120 / RH200
& RH340 Sprockets**



**2 x Boom Lift Cylinders / 2 x Stick Cylinders
2 x Bucket Tilt Cylinders**



**RH120E Reconditioned
Cylinders**



**INMINE have a full operational workshop, that does all work inhouse
from Idler rebuilds to Grouser shoe restripping.**



We are buying used machines, running and non running.

RAMM Parts
adriaan@rammparts.co.za
marc@rammparts.co.za

Adriaan 076 127 2977
Marc 072 530 7373
Rodney 073 103 9582



Komatsu PC220 for sale - Running



2006 Bell L2106D For sale, 12000 hours,
5 cube coal bucket included in price
R 550 000,00 + VAT



Komatsu PC270-7 for sale Running



Komatsu HM400-2 stripping for spares



Chieftain 1700 Powerscreen
Complete Rebuild in progress
For more info contact us



Volvo L180G Wheel Loader



Komatsu A375-5 stripping for spares



Kawasaki 85 Z5 stripping for spares



Volvo A35E stripping for spares



Buckets for sale , kawasaki Z85(new),
Hitachi 870, Volvo, Doosan



Volvo A35D stripping for spares



Bell B40 Runner

158 Watermeyer Street, Witbank

BELL Parts direct to your door

**IT DOESN'T
GET EASIER
OR SAFER**

- Save time
- Save fuel
- No travelling
- No queuing
- Protect employees
- NO EXTRA CHARGE



**BELL supports socially
responsible behaviour**

Contact your nearest BELL Customer Service Centre to
arrange direct delivery or email us at bellparts@bell.co.za.

FOLLOW US ON    
www.bellequipment.com

**Strong Reliable Machines
Strong Reliable Support**





Equipment and Spares

TOUGH WORLD. TOUGH EQUIPMENT. LIUGONG

You don't need to be told it's a tough world. It's your reality, you live in it every day and you know how hard it can be on your people and your machines. It's getting tougher to make your business pay too, with rising costs, increasing legislation and greater competition. We understand and we've put that understanding into action with our new CLG877H wheel loader.

Burgers Equipment and Spares, sole distributing agents for LiuGong Machinery in South-Africa knows that our customers want a robust wheel loader that delivers on 3 essential needs; heavy weight credibility, uptime and support and total cost of ownership. By introducing the CLG877H to the mining and quarry market, Liugong has taken on the challenge to give you a loader that is everything you want, tough, credible and built without compromise. LiuGong has teamed up with some of the industry's best know names; diesel manufacturer Cummins and drivetrain component manufacturer ZF to give you a 24ton machine with a lifting capacity of 7tons that can easily handle all the strenuous tasks with speed, economy and unending stamina.

SHARING OUR CUSTOMERS' SUCCESS.

The LiuGong machines is excellent, with its high availability, low fuel consumption, great operator comfort and safety, the machines are a true asset to our operations, says Michael Rabe, Aggregates Industrial Manager at Lafarge South-Africa. In 2019 Lafarge Mining South-Africa embarked on its BCC (best cost countries) suppliers strategy for HME (heavy mobile equipment). After a strict due diligence process on all the available suppliers Lafarge chose LiuGong Machinery with the local dealer Burgers Equipment and Spares as the preferred supplier to these units.

Main factors considered were as follows,

- **Dealer support**
- **Parts availability**
- **Performance**
- **Finance structure**
- **Total cost of ownership.**

Lafarge is pleased to report that the service from Burgers surpassed all expectations and the performance of the mobile units have been excellent and is an integral part of our operations performance and profitability. The reliability and performance of the HME is class leading says Rabe. Lafarge Mining South Africa operates at 13 hard rock quarries in the major metros in the country, supplying various grades of aggregates to the building and construction markets. Rabe says that Lafarge is extremely satisfied with the product backed by excellent support from the local agent Burgers. All the expectations were met and achieved, and Lafarge will definitely recommend Liugong. The partnership between Lafarge and Burgers has transformed our HME fleet capacity and performance and look forward to continuing the support going forward.

FULL LINE. FULL SUPPORT. FULL SATISFACTION.

As local dealer, Burgers want to offer the market machinery that are cost effective, easy to maintain and low on fuel. With our full line of machinery Burgers are proud to say that the durable and rugged LiuGong machines ensures that every job no matter how big or small it is, gets done with the highest productivity and minimal downtime. We are proud to offer our clients a full line of machines, full support from our team of experts to ensure our clients are fully satisfied.

For more info, Tel: 011 979 3636 / www.liugong.co.za



LIUGONG

FULL LINE. FULL SUPPORT. FULL SATISFACTION.



Equipment and Spares



www.liugong.co.za - admin.za@burgersafrica.com

BURGERS EQUIPMENT & SPARES SA
JOHANNESBURG - HEAD OFFICE
80 POMONA ROAD
011 979 3636

CAPE TOWN
RUBICON CENTRE, SHIRAZ STR, UNIT 1 & 2
SAXENBURG PARK, BLACKHEATH
021 987 5666

POLOKWANE
C/O VELDSPAAT & ZURICH STREET,
B.A.T WAREHOUSE 4
015 298 8696

DOUGLAS
C/O LOCH ROPER & GIDDY STREET
053 298 1108



All Africa Supplies

GLOBAL REACH - LOCAL SUPPLY

www.allafricasupplies.net

011 918 9976

Enquiries: sales@allafricasupplies.net

228 All Black Road Anderbolt Boksburg

BELL



CARRARO

HITACHI

VOLVO

Construction Equipment

DOOSAN



CAT



HYUNDAI
HEAVY INDUSTRIES CO.,LTD.

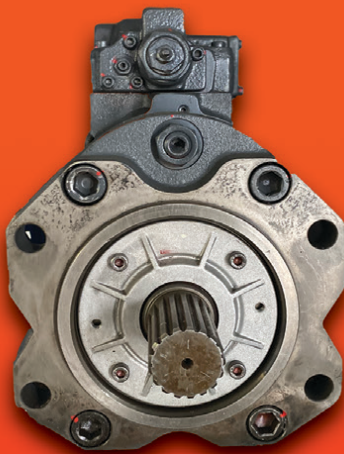
Mobil

ISUZU

KOMATSU

*All manufacturers names, numbers, symbols and pictures are for reference only. It does not imply that any of the parts are the product of these manufacturers.

HYDRAULIC PUMPS



**SERVICE EXCHANGE UNITS
AVAILABLE:**

K3V

K5V

A10VG45

A10V71

A10V68

A10V071

A10V45

FINAL DRIVES

**SERVICE EXCHANGE UNITS
AVAILABLE:**

CAT 320 B/C/D

CAT 330 B/C/D

DOOSAN 225

DOOSAN 220

HITACHI ZX 200

HITACHI ZX 570





All Africa Supplies

GLOBAL REACH - LOCAL SUPPLY

www.allafricasupplies.net

011 918 9976

Enquiries: sales@allafricasupplies.net

228 All Black Road Anderbolt Boksburg

BELL



CARRARO

HITACHI

VOLVO

Construction Equipment

DOOSAN



CAT



HYUNDAI
HEAVY INDUSTRIES CO.,LTD.

Mobil

ISUZU

KOMATSU

*All manufacturers names, numbers, symbols and pictures are for reference only. It does not imply that any of the parts are the product of these manufacturers.

REMAN ENGINES AVAILABLE:



C15	3406 C
C18	C11
C9	C13
3508	D4D
3116	4D102



**PARTS AND COMPONENTS
TO FIT THE FOLLOWING:**

**DOOSAN
CASE
JCB
HITACHI
NEW HOLLAND
HYUNDAI WHEEL LOADERS**



**AUTHORIZED
PARTS DISTRIBUTOR**

Follow us on Social Media



Facebook / All Africa Supplies



Google+



Instagram / @allafricasupplies

www.allafricasupplies.net

VENDEL EQUIPMENT SALES (PTY) LTD

T/A | ASSOCIATED EQUIPMENT

TEL: (011) 801-4911/2/3 Website: www.associatedequipment.co.za Plot 92 Indaba Lane- off Beyers Naude Road
 Rietfontein (Roodepoort), GAUTENG
 FAX: (011) 801-4914
 E-mail: vendels@mweb.co.za E-Mail: associatedloraine@xnet.co.za

Contact: ANTON - Cell: 082 923 5397/ JAAP - Cell: 082 892 1327 / CHRIS - Cell: 083 626 5588
 LORAIN CELL: 076 021 4344 / For Tyres contact Loraine at (011) 801 - 4911/2/3 or on 076 021 4344
 GPS Co-ordinates - S26°3'53.343 - E27°52'37.453



2010 Caterpillar D6T Dozer with Ripper
 Rebuild engine new undercarriage



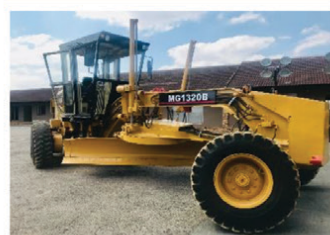
3 x Caterpillar 140H Motor Grader
 with Ripper, Refurbished



6 x Caterpillar 140G Motor Graders
 with Rippers



1 x Komatsu GD650
 Motor Grader with ripper



1 x Cheng Gong MG1320B
 with Ripper



1 x 2013 Komatsu PC200-8 Excavators
 new undercarriage
 1 x 2012 Komatsu PC200-8 Excavator



1 x 2019 Cat 320D3 Excavator
 hours only 1692
 1 x 2019 Cat 320D3 Excavator
 hours only 1446



1 x 2014 Caterpillar 320D Excavator
 1 x 2015 Hitachi ZX210W
 Wheel Excavator



1 x 2013 Wacker 5023 Excavator



1 x 2010 Caterpillar 302.5C
 Mini Excavator



1 x 2016 Doosan DX62R-3 Excavator
 Piped for Hammer- 1100 Hours



2 x 2013 Cat 950H F.E.L'S
 1 x 2014 Cat 980H F.E.L



2 x 2013 Cat 950H
 F.E.L'S



2 x 2018 Hamm 3411
 Smooth Drum Rollers



2 x 2011 Bell 1806E
 F.E.L



2 x 2014/2013 JCB 456
 Front end Loaders



VENDEL EQUIPMENT SALES (PTY) LTD

T/A | ASSOCIATED EQUIPMENT

TEL: (011) 801-4911/2/3 Website: www.associatedequipment.co.za Plot 92 Indaba Lane- off Beyers Naude Road
 Rietfontein (Roodepoort), GAUTENG
 FAX: (011) 801-4914
 E-mail: vendels@mweb.co.za E-Mail: associatedloraine@xnet.co.za

Contact: ANTON - Cell: 082 923 5397/ JAAP - Cell: 082 892 1327 / CHRIS - Cell: 083 626 5588
 LORAIN CELL: 076 021 4344 / For Tyres contact Loraine at (011) 801 - 4911/2/3 or on 076 021 4344
 GPS Co-ordinates - S26°3'53.343 - E27°52'37.453



2 x 2014 Sem 668C Front end Loaders



1 x 2014 Bomag BW212D-40 SD Roller
 1 x 2007 Bomag BW212 S D Roller
 1 x Bomag BW212-40 SD Roller



1 x 2013 Hamm 3411
 Padfoot Roller
 2 x 2018 Hamm 3411
 Smooth Drum Rollers



1 x Dynapac CS142N
 3 Point Steel drum Roller - 13 Ton



1 x Ingersoll-Rand 27Ton PTR



1 x NEW / UNUSED
 Peat TW30 3 Ton Forklift



1 x 2020 NEW / UNUSED
 Case 770 EX Magnum TLB



1 x 2011 Caterpillar 428E 4x4 TLB



1 x 2014 Caterpillar 428F 4x4 TLB
 1 x Caterpillar 420D 4x4 TLB



4 x Etnyre K Chip Spreaders
 Mechanical and Fully
 Electronic Refurbished



3 x Benford TV1200 DDV Rollers
 1 x 2011 Ammann AV12-2 DDV Roller
 1 x 2006 Bomag BW120AD-4 DDVR



1 x 2014 JCB 535-140 Telehandler
 2 x 2016/15 JCB 540-140 Telehandlers
 1 x 2014 JCB 540-170 Telehandler



1 x 2016 F. A. W 10M³ Truck
 1 x 3 Axle Hendred Goosneck trailer



2 x Bell 2806D Tow Tractors



1 x 2004 Terex TA30 6x6
 Dumptruck



1 x 2009 Cat 246C
 Skid Steer Loader



17.5x25 Rock Grip L4 , 17.5x25 L3,
 12.5x80x18, 1400x24L3, 16.9x28
 All New Tyres



1 x Discharged Bin Trailer



1 x Gallion 10 ton Crane
 2 x Ford Mobilift



1 x 5 Sided impact roller
 1 x Spinnekop Broom
 1 x Lighting plant on trailer
 1 x TLB Hydraulic hammer

GPS CO-ORDIANATES: S26°3'56.343 - E37°52'37.453

www.associatedequipment.co.za / www.vendelequipmentsales.co.za



AFRICA'S LEADING EARTHMOVING EQUIPMENT & PARTS DEALER

www.blcplant.com ☎ +27 11 555 2000 ✉ info@blcplant.com

PLANT

PARTS

RENTAL



**OVER 600
MACHINES
IN STOCK**



HYDRAULIC EXCAVATORS

CAT 320D, 325D, 329D, 330D, 336D, 345D, 349D, 365C, 374D/F, 385C, 390D/F



DOZERS

CAT D6R, D6T, D7R, D8R, D9R/T, D10T, D11T



RIGID DUMP TRUCKS

25 X CAT 777D, 5 X 777F



MOTOR GRADERS

CAT 140G, 140H, 140K, 14H, 16G, 120H, 14M, 16H, 16M



ARTICULATED TRUCKS

BELL B40D, B35D



ARTICULATED TRUCKS

CAT 725, 730, 740, 740B, 745C



CAT EXCAVATOR

323D-2017



CAT GRADER

120H - 1998



FRONT END LOADER

CAT 992 K



TRACTOR LOADER BACKHOES

CAT 428F, 428F2, 426F, 450E



COMPACTION ROLLERS

BOMAG BW212-3, BW213D, BW219-3
CAT CS533, CP 533E, CS563E, CS76



FRONT END LOADERS

CAT 950H, 950GC, 966H, 962H, 972H, 980H, 988G, 992K

**LARGEST STOCK OF
PARTS** IN THE
SOUTHERN HEMISPHERE

Service exchange units available.

6 MONTHS WARRANTY
on refurbished components.

View all our available
stock on our website
www.blcplant.com



BLC Plant purchases earthmoving equipment for stock, rebuilds it as required in the fully equipped on-site workshops and then sells it to users in various industries. We focus on delivering products which meet customer specifications, offer buyers a viable alternative to new equipment and provide excellent after sales service and support.

PLANT

**View all our available
stock on our website
www.blcplant.co.za**

PLANT - STOCK READY TO GO



CAT 777D
2012



CAT 924G
2006



TADANO
TR250M-4 CRANE



TADANO
TR250-5 CRANE



CAT MOTOR GRADER
120H



ENTRE CHIP SPREADER



CAT ROLLER
CS-553



CAT RM300
2009

TRUCKS - STOCK READY TO GO



MERC-BENZ ACTROS 4140 WATER TANKER



MERC-BENZ ACTROS 3331 ROCK BIN 2008 X 3



VOLVO 18000L WATER TANKER
(2012) 5 AVAILABLE



MAN 26-280 TIPPER 10m3
(2017) 2 AVAILABLE

Call us now

+27 (0)11 555 2000

or visit

www.blcplant.com

for our latest stock.



Largest stock of parts in the southern hemisphere. Service exchange units available.

www.blcplant.com

+27 11 555 2000

info@blcplant.com

Corner Wynberg Road and 2nd Avenue, Kew

PARTS



**WE STRIPPED OVER
3000 CAT MACHINES
FOR PARTS**



PARTS WORKSHOP



WE ONLY USE GENUINE PARTS

6 MONTHS WARRANTY on refurbished components



CATERPILLAR
Dozer Engines



CATERPILLAR
Dozer Final Drives



CATERPILLAR
Grader Transmissions



CATERPILLAR
Loader Axles



CATERPILLAR
Loader Transmissions



CATERPILLAR
Grader Axles



CATERPILLAR
Transfer Box



CATERPILLAR
Off Highway Transmissions

Call us now **+27 (0)11 555 2000** or visit www.blcplant.com for our latest stock.

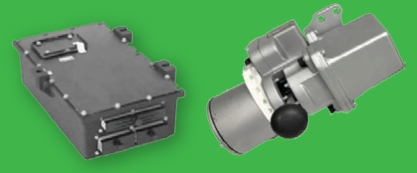
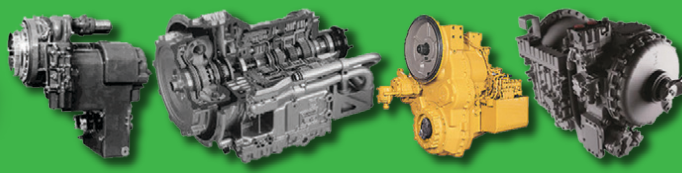
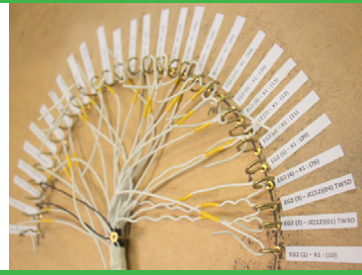
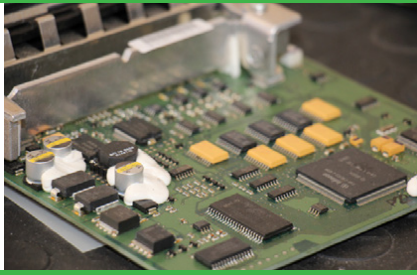
Our Integrated Approach

Transmission Rebuilds

Electronics Laboratory

Wiring Harness Workshop

Vehicle Repairs



New Beginnings Designs rebuilds off highway automatic transmissions and repairs transmission control units and gear selectors.

Visit our website for more info: www.nbdesigns.co.za



We specialise in:

- Transmission overhauls & repairs: Allison, Caterpillar, Clark, Komatsu & ZF
- Ecu & gear selector repairs & design
- Wiring harness repairs & manufacturing
- Dynamometer design & manufacture
- Off-highway vehicle rebuilds & repairs. (Mechanical & electronic)
- Service Exchange
- Transmissions in stock!



@newbeginningsdesigns



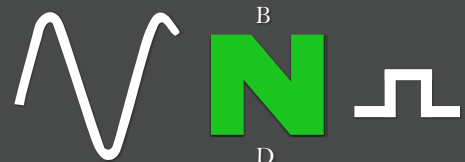
@nbdesigns.sa

CONTACT US

Phone: +27 11 791 4120

Email: suken@nbdesigns.co.za

Address: 1146 Minnie Postma Avenue, Florida 1709





S. MICHELL,
THE PLANT FINDER CC
The **RIGHT EQUIPMENT** at the **RIGHT PRICE**

USED PLANT AVAILABLE



**VOLVO EC240BLC PRIME
TRACKED EXCAVATOR**

SERIAL NO: 15581
SMR: 6400 HOURS
YEAR: 2012



**DAEWOO MEGA 300-V
FRONT END LOADER**

SERIAL NO: 2025
YEAR: 2004
SMR: 11200 HOURS



**DAEWOO MEGA 300-V
FRONT END LOADER**

SERIAL NO: 2029
YEAR: 2004
SMR: 9150 HOURS



**VOLVO EX210BLC
PRIME TRACKED EXCAVATOR**

SERIAL NO: 70429 / YEAR: 2010 / 13500 HRS
AUXILIARY HYDRAULICS
FULLY SERVICED, READY TO WORK.
U/C RECENTLY REPLACED.

SHAWN MICHELL - 082 568 4033
Tel: 041-379 1717 / Fax: 041-379 4753
shawn@plantfinder.co.za



Follow & Like us on Facebook
facebook.com/ThePlantFinder

WWW.PLANTFINDER.CO.ZA



S. MICHELL,

THE PLANT FINDER CC

The RIGHT EQUIPMENT at the RIGHT PRICE

USED PLANT AVAILABLE



**1X USED CAT D7G
DOZER**

YEAR: 1980
SERIAL NO: 92V09714
TILT BLADE, 3 SHANK RIPPER
BERCO "SALT" LINK ASSEMBLIES



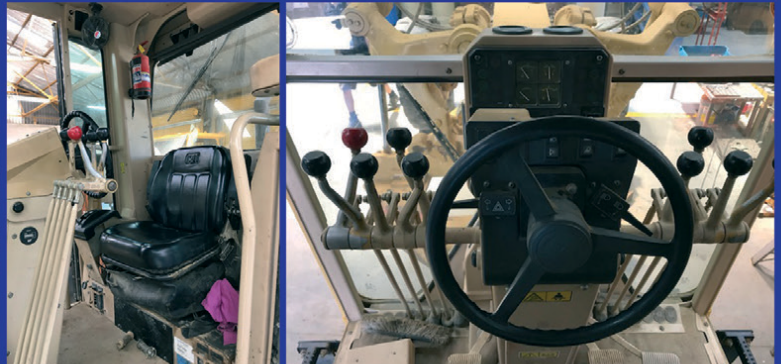
**1X USED KOMATSU BR380JC-01
MOBILE JAW CRUSHER**

SERIAL NO: 2591
YEAR: 2009
SMR: 6000 HOURS



**CATERPILLAR 140K
MOTOR GRADER**

S/NO: CZL01366 / YEAR: 2012 / SMR: 10750HRS
PRICE: R 2 000 000.00 + VAT.
THIS IS A 1 OWNER MACHINE WITH FSH.
READY TO WORK!



SHAWN MICHELL - 082 568 4033
Tel: 041-379 1717 / Fax: 041-379 4753
shawn@plantfinder.co.za



Follow & Like us on Facebook
facebook.com/ThePlantFinder

WWW.PLANTFINDER.CO.ZA



www.tags.co.za

A Part of  Torre Industries

YOUR FIRST CHOICE



DISCOVER AN EXCLUSIVE RANGE OF AFTERMARKET PARTS FOR EARTHMOVING EQUIPMENT



**If you are shopping around for the best quality
Aftermarket Parts for Earthmoving Equipment, take
the time to get in touch with us at TGS™ Tractor &
Grader Supplies.**

TGS – YOUR FIRST CHOICE SUPPLIER

Discover a Range of Aftermarket Parts for Earthmoving Equipment

If you are looking for a range of parts, for your earth moving equipment, to invest in – you have come to the right place.

Tractor & Grader Supplies has earned itself quite a positive reputation in the industry as the largest aftermarket supplier of parts for earth moving machinery in Africa.

You will find that we are the only aftermarket suppliers able to present CTP quality parts and accessories to the market.

What's more, is that we carry the most extensive range of CTP quality products on the market and endeavour to keep our rates competitive, at all times.

The efficiency and effectiveness of earth moving machinery really comes down to the quality of ground engaging tools used with the machinery. We offer a wide range of ground engaging tools for your earth moving machines, including excavators, dozers, loaders, backhoes, rippers, scrapers, motor graders and so on.

Outstanding performance is guaranteed from our tools, due to their high-quality and strategic shapes and designs.

Our tools are ideal for use with a variety of applications within the construction, mining, trenching and various other industries and markets where earth moving is a major task at play.

When browsing through the various tools for earth moving equipment available at Tractor & Grader Supplies, you will find that we supply the likes of segments, ripper shanks, side cutters, adaptors, end bits, blades, dozer blades, self-sharpening teeth, pins and retainers, and so much more.

If there is something specific that you are looking for, it is always best to chat to our sales consultants, who can point you in the right direction and provide you with a wealth of product related information and advice.

Tractor & Grader Supplies was founded in Gauteng in 1994 and has grown in great strides ever since. Our focus on providing our clients with products that are durable and reliable is something that has driven our success. Since we opened our doors for business, we have been striving to become the biggest supplier of parts for the earth moving industry, and we are proud to say that we have reached this goal.

Of course, we are not ready to stop here, and still have great things planned for the market and our loyal customers. All of our products are SABS approved and we guarantee that each item sold is in excellent condition and manufactured from the finest quality materials. When it comes to product quality and value for money, we at Tractor & Grader Supplies do not compromise.

If you are shopping around for the best quality Aftermarket Parts for Earthmoving Equipment, take the time to get in touch with us at **TGS™ Tractor & Grader Supplies**.

+27 10 001 9200 / +27 11 392 7533

www.tags.co.za or email: info@tags.co.



EARTHMOVING EQUIPMENT SPARES DRIVELINE COMPONENT SPECIALISTS

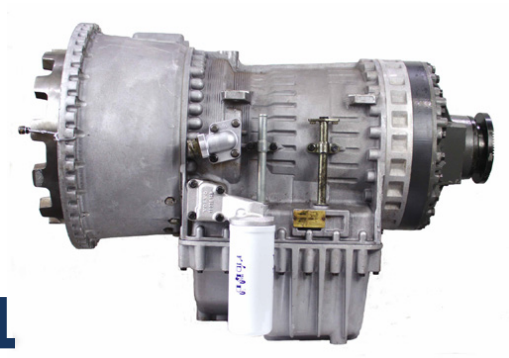
TRANSMISSIONS



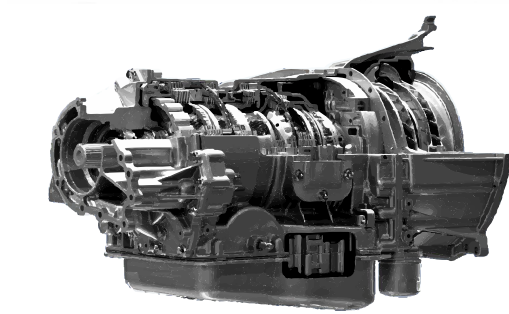
CAT



VOLVO



BELL



*Rebuilds or Service Exchange Units available



KEEPING YOUR PLANT IN MOTION

View our online catalogue for more: pttech.co.za/product-catalogue or Contact us: Tel: 011 022 8570



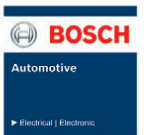
**SPECIALISING IN
GALLION, DRESSER,
KOMATSU, SEM &
CATERPILLAR**



**MACS
auto**
www.macsauto.co.za



**REPAIRS ON ALL TYPES OF EQUIPMENT
CUMMINS ENGINE CONVERSION ON KOMATSU
TLB'S / REPAIR & SUPPLY OF NEW RADIATORS
BREAK & CLUTCH REPAIRS / GENERAL REPAIRS
& REBUILDING / AUTO ELECTRICAL REPAIRS
& REWIRING / FUCHS OILS & GREASES /
FIELD SERVICE REPAIRS**



TM

SEM

A Caterpillar Brand



**THE PERFORMANCE YOU NEED,
THE SUPPORT YOU EXPECT**

OTHER EQUIPMENT



TM

GENIUNE SEM PARTS QUALITY AT ITS BEST

Steyn St. 34, Carolina, 1185.
PO Box 1446, Carolina 1185
Tel. (017) 843 2072 Fax. 086 732 1739
Cell. 083 232 8713

chris@earthmach.co.za
www.earthmach.co.za
VAT REG No. 4280260417
BBEE Level 2



MANUFACTURERS, SUPPLIERS AND STOCKISTS OF:

**CUTTING EDGES | MOLD BOARD LINERS | GRADE BLADES
TIPS AND ADAPTORS | RIPPER SHANKS | END BITS**

WE MANUFACTURE, SUPPLY AND STOCK G.E.T. FOR:

**CAT | KOMATSU | VOLVO | HITACHI | BELL | LIEBHERR | JCB | CASE
TEREX | FURUKAWA | LIUGONG | SANY | SANYO | SHANTUI | FIAT**

WEARPACT ALSO OFFERS A SPECIALIST BUCKET REPAIR SERVICE

WEARPACT

☎ 011 421 4705 / 011 845 3234 / 011 845 3272

☎ 011 421 8761

✉ mwwrp@mweb.co.za

*MANUFACTURER'S NAMES, NUMBERS & DESCRIPTIONS ARE USED FOR REFERENCE PURPOSES ONLY. IT IS NOT IMPLIED THAT ANY PART LISTED IS THE PRODUCT OF THE MANUFACTURERS.

www.wearpact.co.za



● Seals ● Bearings ● Hydraulic Components

We have moved to 504 Pretoria Road, Fairleads, Benoni

Tel: +27 11 420 1003 | Roger: +27 79 493 4486 | Damian: +27 79 897 9822

Seals:

- Earth moving cylinder kits
- Hydraulic seals
- Pneumatic seals
- Oil seal
- O rings
- D rings
- Torric/duo cone/face seals

Bearings:

- Spherical plain bearings
- Spherical roller bearings
- Deep groove ball bearings
- Thrust bearings
- Taper roller bearing
- Needle bearings

Plastic engineering:

- Custom seal manufacturing
- Valve seats
- Bellows
- PTFE balls
- Pressure pads
- Sheeve wheels
- Rail slides

Brands we stock:



TRELLEBORG



SAKAGAMI

Brands we stock:

TIMKEN

FAG

NTN

SKF

Plastics we stock/machine:

- Nylon
- PTFE
- Bronze impregnated PTFE
- Carbon impregnated PTFE
- Glass impregnated PTFE
- Tufnol
- Polyurethane
- All other engineering plastics

Components/Miscellaneous:

- Pins
- Bushes
- Cylinder bolts/washers
- Hydraulic glands
- Custom pattern making
- Castings

- LED work lights
- Component remanufacturing and repair
- Torque rod bushes
- Bellows
- Custom sourcing and supply of goods

Through our network we can also offer a wide range of service exchange hydraulic cylinders



AFFORDABLE ✓ **RELIABLE** ✓ **TRUSTED** ✓

WWW.DURASALES.CO.ZA



Visit our website on www.durasales.co.za for updated stock. T&C APPLY

JHB SHOWROOM
46 Viewpoint Road
Bartlett, Boksburg

CPT SHOWROOM
30 Kiaat Street
Kraaifontein, WC

Contact our showrooms:

Gauteng: +27 (0) 10 823 5478
Western Cape: +27 (0) 21 212 0210

JHB SALES TEAM:

Jerry
Curtis
JP
Coenie
Prinsloo

CPT SALES TEAM:

Pottie
Gerrie





AFFORDABLE ✓ **RELIABLE** ✓ **TRUSTED** ✓

WWW.DURASALES.CO.ZA



Visit our NEW website on www.durasales.co.za for updated stock.

T&C APPLY

JHB SHOWROOM:
46 Viewpoint Road
Bartlett, Boksburg

CPT SHOWROOM:
30 Klaat Street
Kraaifontein, WC.

Contact our showrooms:

Gauteng: +27 (0) 10 823 5478
Western Cape: +27 (0) 21 212 0210

JHB SALES TEAM:

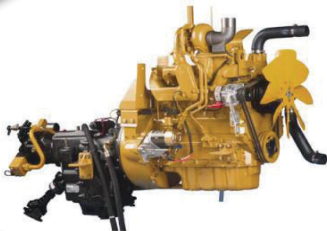
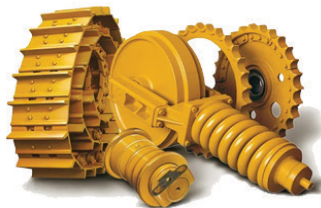
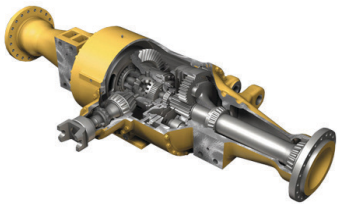
Jerry
Curtis
JP
Coenie
Prinsloo

CPT SALES TEAM:

Pottie
Gerrie



Visit our new website
www.duraparts.co.za





NEW
USED
REFURBISHED
WORK READY



**VIEW ALL
OUR STOCK
AVAILABLE
ONLINE**

**POWERING
PERFORMANCE
ONE PART
AT A TIME.**

**THE EXPERTS
IN MACHINERY
COMPONENTS**

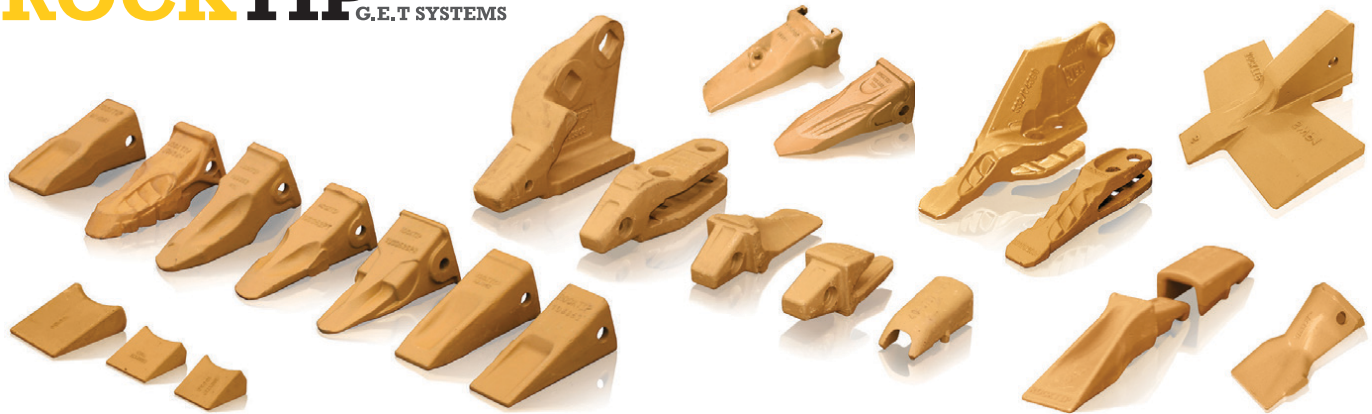
Office : +27 82 691 9524 • Adriaan : +27 71 234 6234 • Tiaan : +27 72 290 4136
Email : admin@duraparts.co.za • Address : 222 Lemmer Rd, Vulcania, Brakpan 1541
www.duraparts.co.za



SPEC-CAST WEAR PARTS
Trusted to deliver

Spec-Cast Wear Parts (PTY) Ltd is a leading manufacturer specializing in the supply of ground engaging tools, undercarriage, undercarriage components, track frames, suspension group replacement parts, agricultural wear parts, general castings and forgings for the construction, mining and agricultural industries.

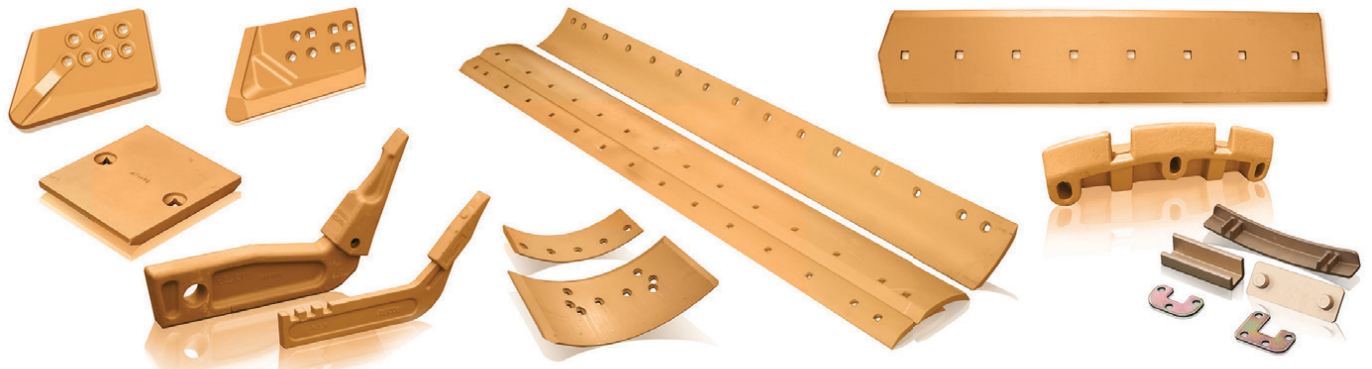
ROCKTIP G.E.T SYSTEMS



Teeth and Adapters for Various Models



Wear Protection



Blades, Cutting Edges, End Bits and Grader Wear Parts

Manufacturers of G.E.T to fit:

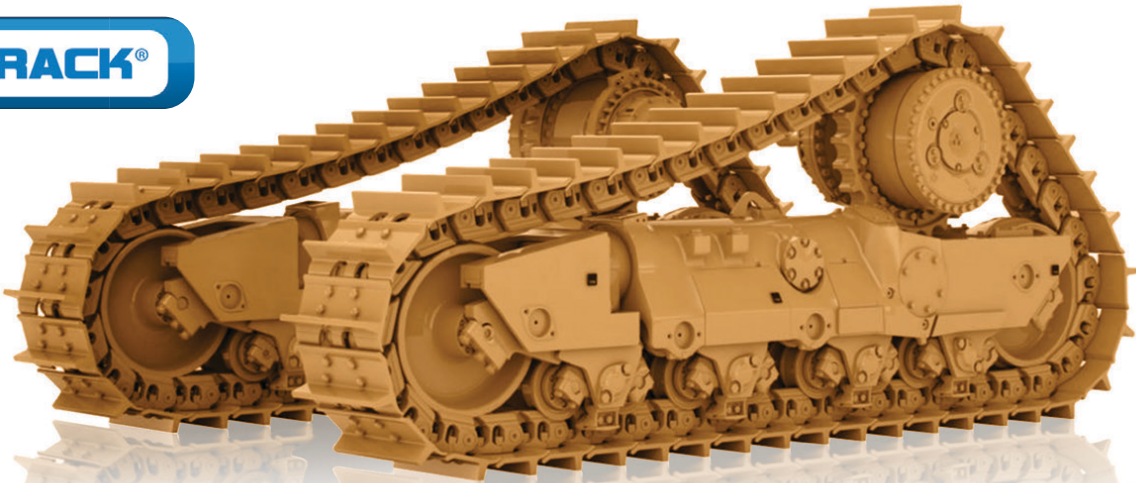
CATERPILLAR	TEREX	ESCO	LIEBHERR	H & L	BOBCAT
KOMATSU	JCB	HYUNDAI	DAEWOO	BUCYRUS	MTG
NEW HOLLAND	MASSEY FERGUSON	CASE	BOFOR	LIUGONG	KUBOTA

Manufacturer's names, numbers, symbols and descriptions are used for reference purposes only and it is not implied that any part listed above is the product of the manufacturers.

Spec-Cast offers a wide range of undercarriage components covering the entire range of modern crawler machine applications in the construction, mining, utility, forestry, road, building, and agricultural industries. Covering all makes and models of machines, from drilling machines to hydraulic excavators, as well as dozers, auxiliary machines, conveyors and customised solutions.



SPEC-CAST WEAR PARTS
Trusted to deliver



Spec-Cast Wear Parts is an authorized Dealer for ITM and VEMATRAK undercarriage parts.
Call our undercarriage experts today!



Chains



Rollers



Sprockets



Idlers



Shoes



Rubber Tracks

CATERPILLAR	HITACHI	KOMATSU	LIEBHERR
6018 RH90	EX1200	PC1250	R9100
6030 RH120E	EX1800/1900	PC2000	R9150
6040/50	EX2500/2600	PC3000	R9250
RH170/200	EX3500/3600	PC4000	R9350
6060 - RH340	EX5500/5600	PC5500	R9400
7495 - 495HR11	EX8000	D375	R995
D8, D9, 10 & D11		D475	R996
			R9800

Our track workshop is available to support all your undercarriage needs

Turning of Pins & Bushes
Remove/Fit Track Shoes

Re-Build Idlers
Re-Shell Rollers

Re-Strip Grouser Shoes
Re-Rim Sprockets

With branches and distributors located in prime areas throughout South Africa, as well as several African countries, Spec-Cast is able to provide the Earthmoving, Mining and Agricultural industries with an efficient, cost effective supply and distribution network.

JHB HEAD OFFICE

+27 11 396 1717/13
aimee@spec-cast.co.za
11 Elgin Street, Pomona,
Kempston Park, Johannesburg

www.spec-cast.co.za

MIDDELBURG
+27 13 813 1413
middelburg@spec-cast.co.za
6 Jaspis Street
Middelburg, Mpumalanga

NORTHERN CAPE
+27 53 010 1304
northerncape@spec-cast.co.za
Section C3, Portion of Farm Waterraad
Kathu, Northern Cape

Follow us:

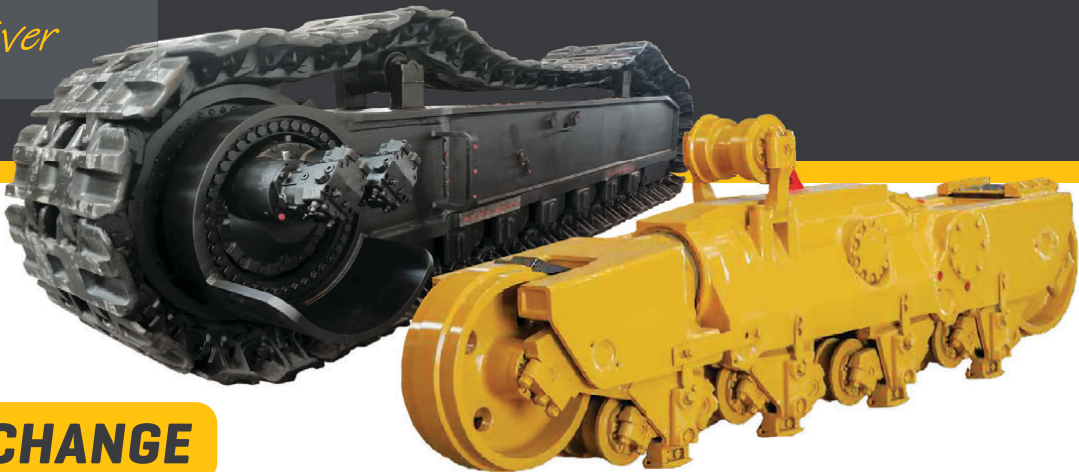




SPEC-CAST WEAR PARTS

Trusted to deliver

CATERPILLAR & KOMATSU
**DOZER & EXCAVATOR
TRACK FRAMES**



SERVICE EXCHANGE

Our Service Exchange Program provides you with a high-quality track frame rebuild solution. All PEX units are like-new, quality track frames that is on hand for delivery to keep your machine productive and keep your costs minimal.

Spec-Cast’s PEX units gives you the advantage of an immediate trade-out of critical components that allows your machine to get back to work as quickly as possible.

TRACK FRAME REPAIRS

Spec-Cast offers partial repairs and full track frame rebuilds, using only quality approved parts including some OEM components that is critical to the longevity of the frame. Strict adherence to our QCP [Quality Control Procedures] provides peace of mind and builds trust in the Spec-Cast Brand. Spec-Cast’s Track Frame Repairs covers a wide range of crawler machines types such as dozers, excavators and shovels across multiple manufacturers and applications.

TRACK FRAME COMPONENTS

Caterpillar and Komatsu Dozer aftermarket track frame components of the highest quality and standard are stocked for immediate supply.

- Bogie Pins and Bogie Pads
- Roller and Idler Caps
- Track Guides
- Equalizer Bars and repair components
- Trunnion’s and repair components
- Bushings and Seals
- Minor Bogies



JHB HEAD OFFICE

+27 11 396 1717/13
undercarriage@spec-cast.co.za
11 Elgin Street, Pomona,
Kempton Park, Johannesburg

www.spec-cast.co.za

MIDDELBURG
+27 13 813 1413
middelburg@spec-cast.co.za
6 Jaspis Street
Middelburg, Mpumalanga

NORTHERN CAPE
+27 53 010 1304
northerncape@spec-cast.co.za
Section C3, Portion of Farm Waterraad
Kathu, Northern Cape

Follow us:





MARSAY EQUIPMENT
QUARRY | MINING | CONSTRUCTION

Marsay Equipment specialises in the buying, refurbishment and selling of good used construction, mining, stone crushing and transport equipment.

We operate throughout southern Africa, mainly the SADC region. We are based in Johannesburg South Africa and have been in business for 44 years.

TIM MARSAY +27 83 654 4248
PATRICK MARSAY +27 79 187 7937

tim@marsayequip.co.za
www.marsay.co.za



**TELSMITH 14 X 24 JAW CRUSHER ON
HEAVY DUTY SKID BASE WITH LOADING
HOPPER AND VGF**



**HADFILEDS 36X26
JAW CRUSHER
REBUILT**



**SYMONS 3FT SHORHEAD
CONE CRUSHER
(TO BE REPAIRED OR SOLD "AS IS")**



VOLVO EXCAVATOR



**2 X CATERPILLAR D9N DOZERS
IN VERY GOOD RUNNING ORDER**



**TELSMITH 5 X 24 CONE CRUSHER
REBUILT WITH NEW LUBE
SYSTEM & RECON MOTOR**



**POWERSCREEN
CHIEFTAIN 600**



**200KVA TRANSFORMER
525V TO 380/220V**

EQUIPMENT VALUATIONS DO YOU NEED AN ACCURATE MARKET VALUE OF YOUR
USED EQUIPMENT? **PLEASE CONTACT US!**



RHINO

Excavator Hammers cc

Reg. No. 2008/152815/21

SOLE DISTRIBUTORS FOR



IN AFRICA



**Rock Wheel
Cutter**



XCENTRIC RIPPER



DandA
SILENCE 1200V

WE ALSO HIRE:
EXCAVATORS & TLB'S
WITH THE ABOVE
ATTACHMENTS



RHINO

Earthmovers cc



BREAKING FOR SPARES

MACHINE & PARTS LISTING (PRICES ON APPLICATION)

- CAT 931C , CAT 330D
- VARIOUS 20 TONNE EXCAVATORS JS200, CAT320D ,CAT330D. (SOLD WITH OR WITHOUT PIPING)
- 14 000 ALUMINUM WATER TANK.

- JAW CRUSHER RUNNING ORDER
- KOMATSU PC400-6 AS A RUNNER OR FOR SPARES.
- 2 X JCB 3CX FOR SPARES.
- KOMATSU DOZER 375-5, 375-3 TRANSMISSION AND ENGINE IN GOOD CONDITION.

+27 74 922 2382 (Office Number) | Cell: 071 670 8707 | 082 887 8636
sales@rhinohammers.co.za | hire@phplant.co.za | cjago@global.co.za
www.rhinohammers.co.za | www.phplant.co.za



MID PLANT SERVICES

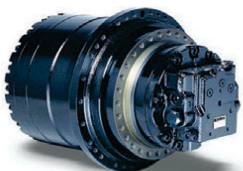
NEW & RECONDITIONED HYDRAULIC EARTHMOVING
EQUIPMENT, PARTS AND REPAIRS



THE ALTERNATIVE SUPPLIER FOR DOOSAN ,HYUNDAI ,VOLVO
AND OTHER BRANDS OF EXCAVATOR PARTS
AND COMPONENTS IN SOUTH AFRICA.



*All manufacturers names, numbers, symbols and pictures are for reference only. It does not imply that any of the parts are the product of these manufacturers.



Final Drives in Stock

CAT 320D, CAT 329D & CAT330D
SUMITOMO SH200, SH210, SH300-3
BELL KATO HD800, HD820, HD1023
CASE CX210, CX240
DOOSAN, VOLVO & HYUNDAI

Engine Parts in Stock



For the following series:
DB58, D1146, DE08,
DE12 & Dx12
Crankshafts, Pistons, Liners,
Bearings, Gasket Kits & Bushes



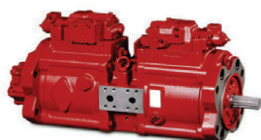
Track Adjusters in Stock

CAT, VOLVO, DOOSAN, HITACHI,
HYUNDAI, All range of excavators.



Hydraulics Cylinders in Stock

Bucket, Boom, Arm,
Steering, Blade, Ripper,
Conveyor & Out Rigger Cylinders



Hydraulic Pumps in Stock

For the following Series:
HPV, K3V, K5V, A10V & A8V

Swing Motor Series:
M2X, M5X & SG



Toggle Links, Pins & Bushes in Stock

Toggle Links, Bucket Pins & Bushes.

CONTACT DETAILS

TEL: +27(0)11 967 0055 | TEL:+27 (0)11 967 0060 | FAX: +27(0)86 606 4597 | SALES@MIDPLANT.COM

ADDRESS: 273 3RD AVENUE, BREDELL, KEMPTON PARK | WWW.MIDPLANT.COM

DOZER

EARTHMOVING



**CAT 834H WHEEL DOZER
FOR SALE**



**CAT 834K WHEEL DOZER
FOR SALE**



**CAT 769C WATER TRUCK
FOR SALE**



**CAT 773E DUMP TRUCK
FOR SALE (VARIOUS)**



**CAT 777D DUMP TRUCK
FOR SALE**



**CAT 725 ADT
FOR SALE (VARIOUS)**



**CAT D10T TRACK FRAMES
(RECON) FOR SALE**



**CAT D10T SU BLADE
(RECON) FOR SALE**



**CAT 769D DUMP TRUCK
FOR PARTS (VARIOUS)**



**CAT 773D/E DUMP TRUCK
FOR PARTS (VARIOUS)**



**CAT 777D DUMP TRUCK
FOR PARTS (VARIOUS)**



**CAT 789C DUMP TRUCK
FOR PARTS (VARIOUS)**



**CAT 824G SERIES 1
WHEEL DOZER FOR PARTS**



**CAT 824G SERIES 2
WHEEL DOZER FOR PARTS**



**CAT 834H WHEEL DOZER
FOR PARTS (VARIOUS)**



**CAT D11R TRACK DOZER
FOR PARTS (VARIOUS)**



**CAT 725 ADT
FOR PARTS (VARIOUS)**



**CAT 730 ADT
FOR PARTS (VARIOUS)**



**CAT 740 ADT
FOR PARTS (VARIOUS)**



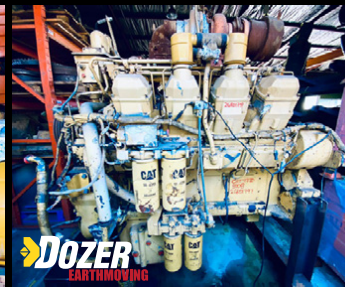
**KOMATSU HD785-5
DUMP TRUCK FOR PARTS (VARIOUS)**



**CAT 3406C 824G SPEC
ENGINE FOR SALE**



**CAT C18 834H/988H SPEC
ENGINE FOR SALE**



**CAT 3508 777D SPEC
ENGINE FOR SALE**



**CUMMINS QSK45
ENGINE FOR SALE**



**CAT 773E/777F CAB (RECON)
ON EXCHANGE**



**CAT D10T/D11T CAB (RECON)
ON EXCHANGE**



**CAT 785D/789D CAB (RECON)
ON EXCHANGE**



**LIEBHERR R9100 CAB
FOR SALE**



**LIEBHERR R9100 EXCAVATOR
FOR PARTS**



**LIEBHERR R9100 BOOM
FOR SALE**



**LIEBHERR R9100 STICK
FOR SALE**



**LIEBHERR R9100 BUCKET
FOR SALE**



**LIEBHERR R9350 EXCAVATOR
FOR PARTS (VARIOUS)**



**LIEBHERR R9350 BOOM
FOR SALE**



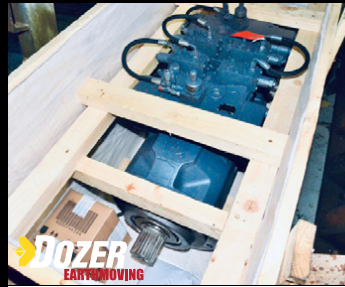
**LIEBHERR R9350 STICK
FOR SALE**



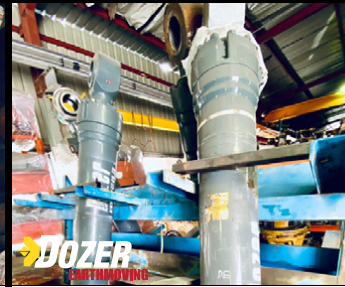
**LIEBHERR R9350 BUCKET
FOR SALE**



**LIEBHERR R9100 HOIST CYLINDERS
FOR SALE**



**LIEBHERR R9350 MAIN PUMP & ALL PUMPS
GOOD USED/REMAN FOR SALE (VARIOUS)**



**LIEBHERR R9350 STICK CYLINDERS (ALL)
GOOD USED/REMAN FOR SALE (VARIOUS)**



**LIEBHERR R9350 FINAL DRIVES
FOR SALE (VARIOUS)**

T +27(0)11 452-1224 M +27(0)11 82 441-2895 E info@dozer.co.za W www.dozer.co.za



www.instagram.com/dozerearth



www.facebook.com/dozerparts

Repairs to all OFF and ON Highway Transmissions, Torque Convertors, Gearboxes, Differentials and Power Take Off's



VORTEX
TRANSMISSIONS

Tel: 011 452-4430/1
Parts: 011 452 3296 / 452 3390
Johan: 082 333 1005
Jan: 082 333 1004
Fax: 011 609 5302
Email: vortex3@mweb.co.za



Allison Fuller • Clark • Caterpillar • Funk Twin Disk



SERVICE UNITS:

- AT 545 bell (spec)
- MT 643 bell (spec)
- MD 3560 P TID 2
- MD 3560 P TID 3
- MD 3060 TID 3
- 4500 ORS GEN 4
- 4500 ORS R GEN 4 LIFE FILTER Bell B40D
- 4500 ORS R GEN 4 Bell B50E
- Terex engine PTO 'S TR 60
- Euclid and Terex transmission PTO'S
- Euclid 6610A CEC2
- Terex 6610AR CEC 2
- Euclid 6620A

UNITS THAT WE ALSO DO:

- Bell grader transmissions
- Cat transmissions
- Funk transmissions
- Terex & Euclid Differential center portions
- Bell differential center portion
- Chelsea PTO'S
- Terex engine PTO'S TR 100



Vortex Transmissions sell genuine Allison parts for all our transmissions Dyno testing is done in house and all transmissions that are tested have test reports



GOOD USED EARTHMOVING PARTS AND EQUIPMENT

STM
MINING EQUIPMENT PTY(LTD)

Tel: (011)894-6192 / (011)894-3377

Fax: (011)894 7914

barney@stmmining.co.za

donovan@stmmining.co.za

Office Hrs: Mon-Fri 07h00-17h00



STM Mining Equipment (PTY) LTD was established in 2002 and has been supplying customers good second hand components and parts for earth moving machines in 2016 we started field service with technician's and recon components and repairing machines.

We supply goods to a wide range of industries such as construction, civil, plant hire, mining and farming industries and as far as Australia, America, Botswana, Zimbabwe and a lot of locally supplied customers to. We have been supplying good secondhand parts to the market since 2002.

OUR PRODUCTS & SERVICES

We supply second hand machines and good used parts for most makes of Earthmoving Equipment ie: Cat, Komatsu.

We buy second hand machines to strip for components and parts, dead or alive to keep in stock for customers. We have a repair shop where we do components and Repair machines for Customers.

**Engines | Engine Blocks | Sub Assemblies
Crankshafts | Cylinder heads | Engine Parts
Undercarriage | Frames & Body | Components
Portable Diesel Compressors**

PO Box 6456, Dunswart 1508, 40 Michelson RD. Westwood, Boksburg

www.stmmining.co.za

WesTrac
CAT®

USED EQUIPMENT

Ron Lanson : +61 418 927 625 | Email: Ronald.Lanson@westrac.com.au



2010 CAT AD55B

AUD \$ 295,000

SERIAL: JNW00176

STOCK: UM9796

HOURS: 23983

PERTH,
WESTERN AUSTRALIA

ENCLOSED AIR CONDITIONED EROPS CAB,
FIRE SYSTEM, HEAVY DUTY LINED BODY,
LOW HOUR REBUILT COMPONENTS,
AIR SUSPENSION SEAT, FAST FILL ENGINE,
HYDRAULIC, TRANS, RADIATOR,
FUEL AND MINE SPEC FITTED.

earth
broker
publication

your sourcing solution for new & used equipment & machinery



A digital version of the magazine will be put up on our website every month.

Glossy A4 Magazine Published Monthly

The **Earthbroker** is posted directly to 5300 contacts within the Mining, Quarry, Construction & Earthmoving Industry. We post the **Earthbroker FREE** of charge throughout South Africa.

Copies are sent Nationally and Internationally. Your advert will be updated on our website monthly for **FREE** and our website is optimised regularly.

We design adverts **FREE** of charge and do changes **FREE** of charge whenever required.

Our website advertising is **FREE** of charge!!




produced & published in South Africa

www.earthbroker.co.za

Pamms Certificate no: 2A8DD9F60574FFC2A4EEEE01A

Seats for safety and strength

The Seat Connection has been a regular and frequent supplier of mining seats for some 30 years.

We have a fully equipped workshop and professionally trained team to assemble new seats and repair or restore used seats.

Developed for strength, our THESCO Mining Seats with their compact EU approved suspensions are ideal for limited space environments and harsh conditions.



THESCO SEAT II



THESCO SEAT III



THESCO SEAT IV



The seat

CONNECTION



TheSeatConnection



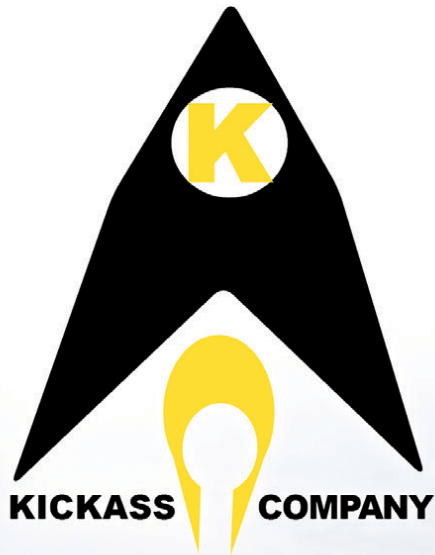
+27 11 452 6802



info@seatconnection.co.za



www.seatconnection.co.za



WEICHAI
PRODUCT SUPPORT AT ITS BEST



A Caterpillar Brand



RENTAL OPTIONS AVAILABLE



FAW Q8 Oils

14 Buwbes Rd, Sebenza

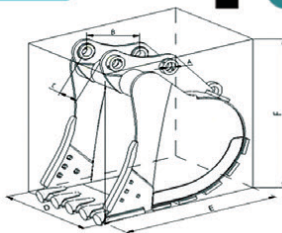
English: Barry - 072 399 9817

bm@semrsa.co.za



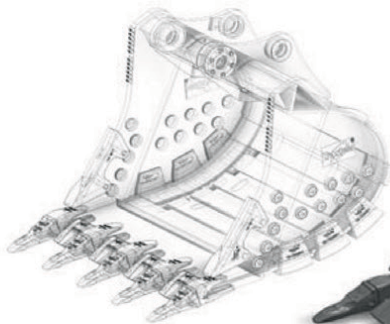
**EXPERIENCE
COMPETITIVE
COMPETENT**

TJB Earthmoving Parts & Buying (Pty) Ltd



TJB BUCKETS AND FABRICATION is one of
TJB EATHMOVING PARTS AND BUYING (PTY) LTD
sister companies.

We identified a gap in the market due to the
extreme costs and lead times offered by leading
"BIG" companies in the industry that seem to almost
control the market.



TEAM / FAMILY

An on-site mechanical, welding
and metallurgical engineer 3D CAD Modelling and design,
drawing and detailing Boilermakers and assistants with specific
product fabrication knowledge SAIW 6G qualified SMAW, GTAW
and GMAW welders All Cactus directors are hands on and directly
involved in the business

SERVICES

- Brand new buckets and grabs
- ANY form of fabrication
- Refurbishments
- Used / second hand

FACILITIES & EQUIPMENT

2 x 500m² workshop, under roof with a 10t and 20t
overhead crane situated in Boksburg State of the art
Lincoln GTAW, GMAW and MMAW welding equipment
Hydraulic equipment for the testing of hydraulics
Welding positioner and welding manipulator
Welding gas emission control equipment

"TJB Buckets and Fabrications" invites YOU to join our family where honesty, transparency, trust, pride and ethics
are the platform in which we build our relationships with our customers. Test us - Please send us the opportunity for
us to prove ourselves and allow yourselves to be amazed!!!

+27 71 154 3786 brad@tjbearthmoving.co.za www.tjbearthmoving.co.za

INDUSTRIAL PLANT SOLUTIONS



ENGINES



TRANSMISSION



FINAL DRIVES



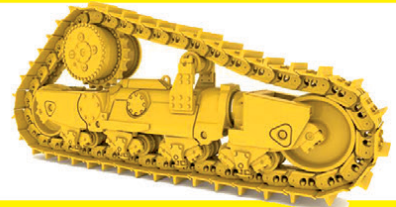
PUMPS



BUCKETS



MISCELLANEOUS



CAT D8R



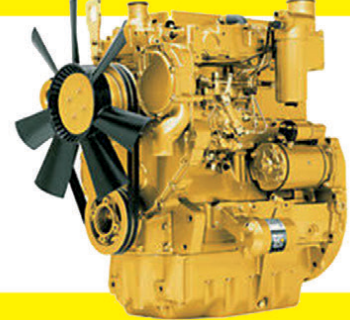
Full Recon Longblock
20R4277 Assembly
CAT Specs

3126B SUB



3126B Sub Assembly
Full Recon
With Warranty

3054C SUB



Full Recon Short Sub
Cyl Head Available,
Can Supply longblock

AVAILABLE ON-THE-FLOOR-NOW!

New, used and reconditioned components - all makes.

If it's from your machine, we'll find a replacement!!

Contact Us:

✉: sales@ipsglobal.net

f: facebook.com/IndustrialPlantSolutions



WhatsApp Message
+27 (0)82 405 3494

Inspections & Assessments Also Done

EMS

Earthmoving Machine Sales



Jason Ward
+27 83 412 1077
jason@sa-ems.co.za



1 X 2011 CATERPILLAR 140K
9000 HOURS



1 X 2014 CATERPILLAR 140K
5000 HOURS



1 X CAT 428F
3100 HOURS – 2017 MODEL



1 X CAT 320D
2012 MODEL - 11000 HOURS



1 X 2006 DYNPAK 250
9000 HOURS



1 X 2006 BELL B25C
23 000 LTR WATERCART



2 X VOLVO EC210
13000 HOURS



1 X CASE 1430 SKIDSTEER
3100 HOURS



1 X 2011 BOMAG BW213-D40
SMOOTH DRUM WITH SHELL KIT
2000 HOURS

EMS

Earthmoving Machine Sales



Jason Ward
+27 83 412 1077
jason@sa-ems.co.za



1 X 2013 JCB 3DX
7000 HOURS



1 X 2016 CAT D6R FORESTRY SPEC
1200 HOURS



2 X 2008 BELL B25DS
14000 HOURS



1 X CAT 426F
2018 MODEL - +3000 HOURS



1 X 2006 CAT D6R STANDARD SPEC
2008 – 14000 HOURS



Convert any electric forklift to lithium ion technology for maximum cost-saving and energy-efficiency benefits

Any electric forklift can be easily converted to use a lithium iron phosphate (LiFePO₄) battery pack as its power source, according to CHASE Technologies General Manager Brent Frazer. "The biggest criterion is to manufacture the ballast tank according to minimum weight requirements, which is traditionally inherent in the heavy lead acid battery. The client simply gives us weights and dimensions and we design and manufacture the solution." For very large orders, CHASE Technologies orders ready-made custom-built tanks from the factory, which means that the LiFePO₄ battery pack becomes a simple 'drop-in' component, ensuring quick turnaround times. Once the battery packs have been assembled, it is a simple PDI process to check that all of the plugs are correct and that the chargers are working properly. Frazer points out that CHASE Technologies takes particular pride in its tank-fabrication capability. It always ensures that any tank it manufactures and installs fits snugly enough so that there are no niggling rattles, for example. "We seal everything and even place a rubber mat underneath the battery to prevent any metal-on-metal contact. This is testament to our attention to detail and guarantee to our customers that they receive the highest-quality battery packs."

In terms of warranty issues, Frazer highlights that this remains unaffected by converting the power supply from lead acid batteries to LiFePO₄. The only difference with the CHASE Technologies pack is that it comes with a separate control display used to switch the battery on and off, which is also an added safety measure. "A development we are working on is to integrate this display with that of the client's forklift," reveals Frazer. "What tends to give LiFePO₄ a competitive edge in the marketplace is that, in many instances, clients import forklifts without batteries, as it is far more cost-effective to source these locally and also receive any back-up if required," adds Frazer.

Another service offered by CHASE Technologies is that it can customise the spray-painting of its fabricated tanks in accordance with specific customer branding requirements.

This makes the conversion process a 'no-brainer', he stresses. "The industry needs to understand that it is a really simple process. All we need are the weight and dimensions of the tank and the battery ampere hours, which allows us to provide the equivalent LiFePO₄. We even produce the necessary technical drawings if any tank has to be manufactured. The end result is a complete solution for the client that allows them to take full advantage of the cost-saving and energy-efficiency benefits of LiFePO₄ technology," concludes Frazer.

CHASE Technologies Contact

Brent Frazer

Phone: (010) 025 0200 / Cell: 082 881 1724

Web: www.chasetech.co.za / Email: brent@chasetech.co.za



Any electric forklift can be easily converted to use a LiFePO₄ battery pack as its power source



CHASE Technologies orders ready-made custom-built tanks from the factory



HITACHI ABB

Hitachi ABB Power Grids to provide Egypt's first advanced power quality solution to support grid expansion and rural development

Hitachi ABB Power Grids will provide state-owned Egyptian Electricity Transmission Company (EETC) with high-performance grid stabilization technology to help improve power quality and expand transmission capacity in the strategic Owainat development area in southwest Egypt, where desert wasteland is being re-claimed for agricultural use.

The contract was signed in the presence of the Egyptian Minister of Electricity and Renewable Energy, Dr. Mohamed Shaker. This strategic project will provide EETC with a fully engineered solution based on a 200-megavolt ampere (MVAR) STATCOM to be connected to the existing 220 kilovolt (kV) Owainat substation, thus enabling grid expansion and providing more power for rural development and a rapidly increasing population.

Hitachi ABB Power Grids' technology and engineering capabilities will help the country reclaim untapped land in the vast Western Desert, where projects are underway to sustainably improve social and economic conditions for Egyptian communities.

"Hitachi ABB Power Grids is proud to support EETC in this strategic project, and to help drive efforts to meet Egypt's 2030 vision of integrated, sustainable growth with a focus on the energy industry," said Mohamed Hosseiny, Country Managing Director, Egypt & North Africa, Hitachi ABB Power Grids. "With our solutions we are helping our customers transition towards a carbon-neutral energy system."

"We are pleased to collaborate with Hitachi ABB Power Grids as we believe they have the required expertise and capability to execute this project efficiently, and look forward to partnering on future projects," said Sabah Mashaly, Chairman of Egyptian Electricity Transmission Company.

Grid expansion and reliability are prerequisites for the government's plan to make the country a regional hub for electricity exchange with Africa and Europe, also supporting the UN's Sustainable Development Goal 7 – ensuring that all people have access to affordable, reliable, sustainable and modern energy.

The Hitachi ABB Power Grids' solution is Egypt's first fully engineered power quality system. Based on a 200 MVAR STATCOM, it comprises an integrated SVC Light® static compensator, power transformers, control, protection and telecommunications system. The solution will increase the grid's power transfer capability by improving voltage stability and providing a smooth voltage profile under different network conditions.

Hitachi ABB Power Grids Contact

Thembisile Dzonzi

PG, Communications Manager

Phone: +27 10 202 5841

Mobile: +27 60 533 1132

thembisile.dzonzi@hitachi-powergrids.com



High output With an output of up to 750 tons an hour, the mobile screening plants MS 1202 and MS 1203 are highly productive.

KLEEMANN upgrades its screen programme

In order to also guarantee effective screen of large volumes, Kleemann offers two new mobile classifying screens with a feed capacity of up to 750 t/h.

The MOBISCREEN MS 1202 and MS 1203 are available with two or three screen decks and have screening surface areas of 12 m² in the upper and middle deck and 11 m² in the lower deck. They thus make hourly outputs of up to 750 tons possible. But what else does it come down to with such screening plants apart from a high maximum output? Aiko Fischer, Product Manager for screening plants at Kleemann, answers this: "To achieve these high outputs, the material flow must be well designed. Kleemann has thus generously dimensioned the feed hopper with a holding volume of 10 m³. This makes feeding both with a crushing plant as well as with a large wheel loader possible. Despite discontinuous feeding by the wheel loader, the large hopper volume ensures continuous material supply to the screen. Correspondingly wide feeding and discharge conveyors guarantee an unobstructed material flow over the screen. The high-torque diesel engine also ensures that the plant does not 'run out of steam'."

Setting options for top product quality

"Apart from the pure performance data, we should not forget the most important thing: the adjustability of screening angle and amplitude to the different feed materials and their properties. Besides the selection of the suitable screen surface, the correct selection of these parameters ultimately decides the screening performance and product quality", continues Fischer. Both screens can be combined very well both with the crushing plants from the Kleemann EVO series as well as the PRO series. Fischer: "The smaller the separating cut and the higher the required final product amount, the larger the screening surface must be. It's really quite simple."

Efficient drives

As with other screening plants in the MOBISCREEN series, the MS 1202/MS 1203 are driven by efficient and powerful hydraulic power units. The Dual Power option also allows the screens to be driven by electric power only, which further increases the efficiency and reduces the load on the environment by decreased noise and exhaust emissions.

Flexible in application – large selection of screen surfaces and good transport properties

For flexible application, Kleemann offers a large selection of screen surfaces with different mesh shapes – square, rectangular or harp-shaped – as well as the correct characteristic, for example steel or plastic. To ensure that this flexibility relates not only to the screen applications but also to the different job sites, good transport properties and fast set-up and dismantling times are very important. This is also an advantage of the MS 1202/MS 1203 as one of the largest mobile screening plants in the world that can be transported in one piece.

Further information is available from:

KLEEMANN GmbH - Mark Hezinger
Manfred-Wörner-Straße 160
73037 Göppingen
Germany

Telephone: +49 (0) 7161 206-0 / E-mail: mark.hezinger@kleemann.info / www.kleemann.info

Can mining houses compel employees to be vaccinated?

By Lizle Louw, a Partner at Webber Wentzel

As South Africa prepares to roll out the Covid-19 vaccine, mining companies will be important centres for distribution, but they will have to be circumspect in imposing vaccines on their employees.

The mining industry has expressed its readiness to participate in administering the vaccine and is eagerly awaiting details on how to do so from the Minister of Health. In terms of the guidelines recently published by the National Institute for Communicable Diseases (NICD), government will be the sole purchaser of the vaccine. It will maintain an Electronic Vaccine Data System that will co-ordinate, accredit facilities, supply the vaccine, manage pre-booking for vaccination and record the vaccination and other relevant information used to plan, execute and monitor vaccination. The Minister of Health also announced on 3 January 2021 that there will be a hierarchy, determined by government, in rolling out the vaccine. In the light of those announcements, mining companies will, at least for now, not be able to procure vaccines and provide them to their employees and community members. Once the vaccine is freely available, mining companies may decide to provide vaccinations to protect employees' health and safety at work. In terms of current mine health and safety legislation, there is, however, no legal duty on mining companies to do so.

The question whether employers can make vaccination for employees mandatory only arises after government relinquishes control over who can receive it and when. President Cyril Ramaphosa stated in his address to the nation on 1 February 2021 (and repeated the statement) that no-one would be forced to take the vaccine. This is however not written into any law and does not necessarily preclude an employer from putting a mandatory vaccination policy in place.

The primary piece of legislation that sets out the employer's duty of care in the mining industry is the Mine Health and Safety Act 29 of 1996, which requires every employer to take reasonably practicable measures to ensure the mine is designed, constructed, and equipped to offer safety and a healthy working environment.

In addition to the Disaster Management Act Regulations that apply during Covid-19 lockdowns, the Chief Inspector of Mines has issued the Mandatory Code of Practice: Prevention, Mitigation and Management of Covid-19 Outbreak and the Department of Health has issued various guidelines to assist employers in implementing measures to prevent and manage Covid-19 in the workplace. All these guidelines are intended to ensure, as far as reasonably practicable, that employees are not exposed to an environment which puts them at risk of exposure to the virus.

Despite the above, putting a mandatory policy in place would be exceptionally difficult to do in practice. If mining companies were to tell their employees they may not come to work unless they have been vaccinated, they would potentially be violating various basic human rights enshrined in the Constitution, including the right to bodily integrity. Employees have different views on the vaccine – some are in favour and some are anti-vaccines for various reasons related to religion, cultural beliefs, or simply not feeling comfortable with the new vaccine etc.

While constitutional rights can be limited, such limitation must be reasonable and justifiable. This requires a detailed assessment of the circumstances of each mining operation to determine whether these constitutional rights of employees who object to vaccination may be limited. These factors include travel arrangements to workplaces, prevalent comorbidities, and labour density in certain areas. Each mine would have to take its own decision, based on its circumstances, and the decision would have to stand the test of reasonableness.

Since the primary reason for having a mandatory vaccination policy would be to protect employees' health and safety in the workplace, constitutional rights would have to be balanced against combating the pandemic. But the Covid-19 pandemic is unprecedented, and this issue has not been tested in South African courts yet.

A mandatory vaccination policy would also constitute a change to employees' terms and conditions of employment, which cannot be made unilaterally but requires the consent of both parties. An alternative approach for mining companies may be to embark on a communication drive to explain the benefits of the vaccine to occupational and personal health, so that when the vaccine becomes more readily available, employees will elect to take the vaccine. Employers may also consider to, at that time, revoke special arrangements such as additional Covid-19 related leave due to the availability of a vaccine.





earthbroker

your sourcing solution for new & used equipment & machinery

- Why deal with different people each month when you can deal with the same friendly people you always deal with.
- We are proudly South African. Support your country who understand your needs.
- WE are ABC Accredited - this means we do print the amount we say we print. No pie in the sky number. We send direct to the correct people in the industry.
- We have our PAMMS certificate...This means our database has been checked and validated.
- Your advert receives FREE online exposure on our website with our online magazine and the link to the magazine is on our App, Facebook, Instagram and LinkedIn.
- We design FREE of charge and all changes are done FREE of charge.
- NO contracts to be signed.
(Just a full calender months notice is required for cancellation)



Audit Bureau of Circulations
of South Africa



**We have an
online magazine
in which your
advert is
advertised free
of charge**

We offer excellent service and design.

**Should you have people/companies you would like
added to our database , we will happily do
that should they not already be on our database.**

Please call us for a prompt response and great service!

For further info on how to get your company listed in the Earthbroker please call...Janine - 083 456 4027



TELSMITH 14 X 24 JAW CRUSHER

on heavy duty
skid base with loading
hopper and VGF

TIM MARSAY +27 83 654 4248
PATRICK MARSAY +27 79 187 7937
tim@marsayequip.co.za
www.marsay.co.za



PILOT CRUSHTEC GFH560 BELT FEEDER

TIM MARSAY +27 83 654 4248
PATRICK MARSAY +27 79 187 7937
tim@marsayequip.co.za
www.marsay.co.za



CAT D9R

2013 MODEL
3 UNITS AVAILABLE / NEW
SERVICED
CALL FOR PRICE

THOMAS MITTAG
072 545 6223
info@mae-equipment.com
www.mae-equipment.com



D8T DOZER

2011 model
import unit
Call for Price

THOMAS MITTAG
072 545 6223
info@mae-equipment.com
www.mae-equipment.com



TELSMITH 10X21 JAW JUSHER

TIM MARSAY +27 83 654 4248
PATRICK MARSAY +27 79 187 7937
tim@marsayequip.co.za
www.marsay.co.za



CAT773F WATERBOWSER

2008 model
Call for Price

THOMAS MITTAG
072 545 6223
info@mae-equipment.com
www.mae-equipment.com



CATERPILLAR 938F

R480 000,00 + VAT

Dewald Hattingh: +27(0) 72 547
2198 +27(0) 11 973 3737
info@atlasmasjiene.co.za



KOMATSU WA320-6

9690 Hours

Contact Stuart Mckenzie
Tel: 033 212 2181
Cell: 082 558 7901
Email: sjm@mckenzieplant.co.za



KOMATSU D375A-6 DOZER

2011 model refurbished &
new undercarriage
Call for Details

THOMAS MITTAG
072 545 6223
info@mae-equipment.com
www.mae-equipment.com



VOLVO A30D

2008 model
conversion to waterbowser
ZAR 1.550.000

THOMAS MITTAG
072 545 6223
info@mae-equipment.com
www.mae-equipment.com

For further info on how to get your company listed in the Earthbroker please call...Janine - 083 456 4027

For further info on how to get your company listed in the Earthbroker please call...**Janine - 083 456 4027**



1 X HITACHI ZX400LC-5G HYDRAULIC EXCAVATOR

Year Model: 2016
Hours (SMR): 14 880

Contact Person:
Neil Britz: +27 66 197 0178



2 X HITACHI ZX330LC-5G HYDRAULIC EXCAVATORS

Year Model: 2017
Hours (SMR): 9090 & 15 139

Contact Person:
Neil Britz: +27 66 197 0178



6 X BELL B30D ARTICULATED DUMP TRUCKS

Year Model: 2008 / 2011 / 2013
Hours (SMR):
Between 10 000 – 25 000 hours

Contact Person:
Neil Britz: +27 66 197 0178



6 X BELL B30D ARTICULATED DUMP TRUCKS

Year Model: 2008 / 2011 / 2013
Hours (SMR):
Between 10 000 – 25 000 hours

Contact Person:
Neil Britz: +27 66 197 0178



1X USED KOMATSU BR380JC-01 MOBILE JAW CRUSHER

Serial no: 2591
Year: 2009
SMR: 6000 hours

Shawn Michell
082 568 4033
shawn@plantfinder.co.za



DAEWOO MEGA 300-V FRONT END LOADER

Serial no: 2029
Year: 2004
SMR: 9150 hours

Shawn Michell
082 568 4033
shawn@plantfinder.co.za



STRIPPING HITACHI 870/3

Good Runner stripping for
spares. Parts still in excellent
condition.

Rodney
0731039582
rodney@marodew.co.za



DAEWOO MEGA 300-V FRONT END LOADER

Serial no: 2025
Year: 2004
SMR: 11200 Hours

Shawn Michell
082 568 4033
shawn@plantfinder.co.za



BELL B20C

Mechanically good condition.
Very well priced.
R145 000

Rodney
0731039582
rodney@marodew.co.za



1X USED CAT D7G DOZER

Year: 1980
Serial no: 92V09714
Tilt blade, 3 shank ripper
Berco "salt" link assemblies

Shawn Michell
082 568 4033
shawn@plantfinder.co.za

For further info on how to get your company listed in the Earthbroker please call...**Janine - 083 456 4027**

For further info on how to get your company listed in the Earthbroker please call...**Janine - 083 456 4027**



CATERPILLAR 140G

R1 200 000,00 + VAT

Dewald Hattingh: +27(0) 72 547
2198 +27(0) 11 973 3737
info@atlasmasjiene.co.za



CATERPILLAR 950G

R670 000,00 + VAT

Dewald Hattingh: +27(0) 72 547
2198 +27(0) 11 973 3737
info@atlasmasjiene.co.za



CATERPILLAR D4H

R550 000,00 + VAT

Dewald Hattingh: +27(0) 72 547
2198 +27(0) 11 973 3737
info@atlasmasjiene.co.za



VOLVO EC240BLC PRIME TRACKED EXCAVATOR

Serial no: 15581
SMR: 6400 Hours
Year: 2012

Shawn Michell
082 568 4033
shawn@plantfinder.co.za

H.V.R TURBOS

WE ARE THERE FOR YOU ... CALL, WE DO!

VIR "**BARGAINS**" OP
GRONDVERSKUIWINGS -
MASJIENERIE
TROKKE EN SLEEPWAENS
BESOEK

WWW.HVRTURBOS.CO.ZA

HENNING
083 755 2177



SHANTUI SD13

R450 000,00 + VAT

Dewald Hattingh: +27(0) 72 547
2198 +27(0) 11 973 3737
info@atlasmasjiene.co.za



CATERPILLAR 924G

R550 000,00 + VAT

Dewald Hattingh: +27(0) 72 547
2198 +27(0) 11 973 3737
info@atlasmasjiene.co.za



1X USED VOLVO EC210BLC PRIME TRACKED EXCAVATOR

Serial no: 70429 / Year: 2010 /
13500 hrs / Auxiliary hydraulics
Fully serviced, ready to work.
U/C recently replaced.

Shawn Michell
082 568 4033
shawn@plantfinder.co.za



CATERPILLAR 317

R450 000,00 + VAT

Dewald Hattingh: +27(0) 72 547
2198 +27(0) 11 973 3737
info@atlasmasjiene.co.za

For further info on how to get your company listed in the Earthbroker please call...**Janine - 083 456 4027**

Classifieds

For further info on how to get your company listed in the Earthbroker please call...Janine - 083 456 4027



CAT349F

2015 model
5.089h (read-off) / import unit
Call for Price

THOMAS MITTAG
072 545 6223
info@mae-equipment.com
www.mae-equipment.com



ALL PARTS TO ASSEMBLE A CAT 20R4277 CORE FOR A D8R.

CAN BE VIEWED KZN
BRACKENHILL RD.
WATERFALL

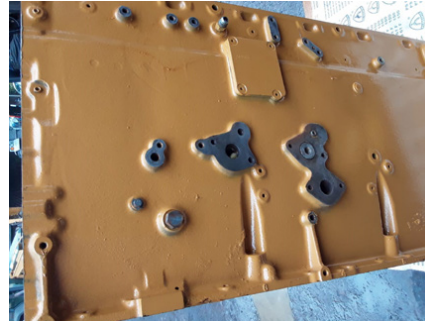
WhatsApp Message
+27 (0)82 405 3494
sales@ipsglobal.net



ALL PARTS TO ASSEMBLE A CAT 20R4277 CORE FOR A D8R.

CAN BE VIEWED KZN
BRACKENHILL RD.
WATERFALL

WhatsApp Message
+27 (0)82 405 3494
sales@ipsglobal.net



ALL PARTS TO ASSEMBLE A CAT 20R4277 CORE FOR A D8R.

CAN BE VIEWED KZN
BRACKENHILL RD.
WATERFALL

WhatsApp Message
+27 (0)82 405 3494
sales@ipsglobal.net



ALL PARTS TO ASSEMBLE A CAT 20R4277 CORE FOR A D8R.

CAN BE VIEWED KZN
BRACKENHILL RD.
WATERFALL

WhatsApp Message
+27 (0)82 405 3494
sales@ipsglobal.net



ALL PARTS TO ASSEMBLE A CAT 20R4277 CORE FOR A D8R.

CAN BE VIEWED KZN
BRACKENHILL RD.
WATERFALL

WhatsApp Message
+27 (0)82 405 3494
sales@ipsglobal.net



ALL PARTS TO ASSEMBLE A CAT 20R4277 CORE FOR A D8R.

CAN BE VIEWED KZN
BRACKENHILL RD.
WATERFALL

WhatsApp Message
+27 (0)82 405 3494
sales@ipsglobal.net



ALL PARTS TO ASSEMBLE A CAT 20R4277 CORE FOR A D8R.

CAN BE VIEWED KZN
BRACKENHILL RD.
WATERFALL

WhatsApp Message
+27 (0)82 405 3494
sales@ipsglobal.net



1 X HYUNDAI 300LC-9S EXCAVATOR

Contact Stuart Mckenzie
Tel: 033 212 2181
Cell: 082 558 7901
Email: sjm@mckenzieplant.co.za

For more info on advertising your machine or spares in the classifieds please call Janine on 083 456 4027
janine@earthbroker.co.za

For further info on how to get your company listed in the Earthbroker please call...Janine - 083 456 4027

Agriculture / Forestry

Bell Equipment
Filter Centre
LNE Agri-Earth

Attachments

CTC Plant Company (PTY) Ltd
Rhino Excavator Hammers
Plant Finder

Buckets

Catech Engineering
INMINE
Industrial Plant Solutions
Paramount Equipment
STM Mining
TJB Earthmoving Parts
Wearpact

Crushing

Kemach McCloskey
Marsay Equipment

Dyno Testing

Earthmoving Specialist
Mzantsi Transmissions
Power Transmission Technology

Exhausts

Rustpet Exhausts

Engineering

All Africa Supplies
Catech Engineering
Earthmoving Specialist
Earthmach
East Coast Gears
Gears for Africa
Lee's Dozers
New Beginning Designs
P&R Earthmoving
TJB Earthmoving Parts

Gearbox / Transmissions

East Coast Gears
Mzantsi Transmissions
P&R Earthmoving
Power Transmission Technology
Sintech
Vortex

Gears

East Coast Gears
Gears for Africa

G.E.T / Undercarriage

Blumaq
Centrax
ESP
ITR Africa
Industrial Plant Solutions
Mid Plant Services
P&R Earthmoving
Paramount Equipment
Spec-Cast Wear Parts
STM Mining
TJB Earthmoving Parts
Tractor Grader Spares
Wearpact

Hydraulics

Industrial Plant Solutions
Mid Plant Services
P&R Earthmoving
Power Transmission Technology
One Stop Procurement
TJB Earthmoving Parts
Tambani Hydraulics

Lifting Equipment

Liugong

Lubricants & Oils

Bell Equipment
Earthmach
Filter Centre

Machine Hire

AmPlant
BLC Plant Company
Bulk Machine Hire
Lee's Dozers
Rhino Excavator Hammers

New Machines

Bell Equipment
Earthmach
Lovol Construction
Liugong

New Parts

Bell Equipment
Blumaq
CTC Plant Company
Centrax
East Coast Gears
ESP

Should you want to receive a free copy of our magazine please email your details to janine@earthbroker.co.za

New Parts

Filter Centre
 ITR Africa
 Industrial Plant Solutions
 LNE Agri-Earth
 Lovol Construction
 Mid Plant Services
 One Stop Procurement
 Prime Plant
 Queensburgh Plant Sales
 P&R Earthmoving
 Paramount Equipment
 Rhino Excavator Hammers
 Rustpet Exhausts
 Shin-Li Trading
 Spec-Cast Wear Parts
 STM Mining
 Shin-Li Trading
 Sintech
 Tractor Grader Spares
 Wearpact
 WEICHI SEM Parts

Pumps

All Africa Supplies
 Blumaq
 Industrial Plant Solutions
 Mid Plant Services
 Shin-Li Trading

Seats / Upholstery

The Seat Connection

Services

Bell Equipment
 CTC Plant Company
 Dura Sales
 Earthmach
 Gears for Africa
 INMINE
 ITR Africa
 LNE Agri-Earth
 Lovol Construction
 Power Transmission Technology
 Prime Plant
 Queensburgh Plant Sales
 Marsay Equipment
 Mid Plant Services
 Vortex Transmissions

Turbos

Industrial Plant Solutions
 Turboworks

Torque Convertors

ITR Africa
 Industrial Plant Solutions
 One Stop Procurement
 Sintech

Tyres

Associated Equipment / Vendel Civils
 Safety Grip

Used Machines

Atlas Masjiene
 All Africa Supplies
 Amalgamated Plant
 Associated Equipment / Vendel Civils
 BLC Plant Company
 CTC Plant Company
 Dozer
 Dura Equipment Sales
 Earthmach
 Earthmoving Machine Sales
 IMIME
 Lee's Dozers
 Mae Equipment
 Marsay Equipment
 McKenzie Plant Sales
 Mid Plant Services
 Plant Finder
 Queensburgh Plant Sales
 Ramm Parts
 STM Mining Equipment
 WesTrac CAT

Used Parts

All Africa Supplies
 Bell Equipment
 BLC Plant Company
 Bulk Machine Hire
 Dozer
 Dura Parts
 East Coast Gears
 Earthmoving Machine Sales
 Earthmoving Specialist
 ITR Africa
 INMINE
 Industrial Plant Solutions
 Mid Plant Services
 P&R Earthmoving
 Parramont Equipment
 Prime Plant
 Queensburgh Plant Sales
 Ramm Parts
 STM Mining Equipment
 Shin-Li Trading
 Turboworks
 WEICHI SEM Parts

earthbroker

your sourcing solution for new & used equipment & machinery

The Earthbroker is published monthly and 5400 copies are sent to all the mines, quarries, and all companies dealing with earthmoving and construction in South Africa, Africa and some overseas countries.

We are **ABC accredited** and have our **Pamms certificate No: 2A8DD9F60574FFC2A4EEEE01A**.

We also have a website where anyone can view the magazine, which is updated monthly with the latest changes and advertisements. Please view our E-Mag on www.earthbroker.co.za

Our E-magazine is uploaded monthly to Facebook, Instagram, LinkedIn and our mobile App.

We accept about 5 editorials a month which we insert free of charge. Should you have an editorial which is relevant to the industry, we will gladly give it consideration.

For details of our prices on a full page, half page or quarter page, please phone me on 083 456 4027 or e-mail me at janine@earthbroker.co.za.

We do not ask anyone to sign a contract, however we do insist on a **full calendar month's notice** for cancellation.

Please note that all quotations exclude VAT. We do insertions, (own printing costs) at R1.50 each excluding VAT.

Classifieds at R500.00 excluding VAT for a business card size advertisement only.

Janine Sargeant
(CELL)083 456 4027
janine@earthbroker.co.za

**Should you want to receive a free copy of our magazine
please email your details to janine@earthbroker.co.za**

Conditions of Acceptance for advertising

Adverts are subject to the following conditions:

1. Often we receive faxes with illegible letters or numbers. We accept no responsibility due to this.
2. We accept NO responsibility for errors in advertisements received telephonically.
3. We reserve the right to refuse placement or to place the advertisement/s as we see fit.
4. No responsibility will be taken for omission of advertisements, for any errors/colour-differences in advertisements or any results due to such errors.
5. We accept no responsibility for the quality of goods advertised. We merely bring buyers and sellers into contact with each other and we are not responsible for any results due to transactions made through the advertisements.
6. Please note one full calendar months written notice for cancellations.
7. Payment due prior to publication or interest will be charged.
8. There will be an annual increase of 10% at the beginning of each year.
9. The Earthbroker will not be held responsible for content of any advert inserted in our magazine.

COMPANY	BRANCH	DESIGNATION	CONTACT	TEL NO	CELL	EMAIL
Andru Mining	JHB	Sales	Naren Birdju	(011)395 0200 / +27 82 859 0766		plantsales@andru.co.za
Atlas Masjiene	JHB		Dewald Hattingh	+27(0) 72 547 2198 +27(0) 11 973 3737		info@atlasmasjiene.co.za
Atlas Service Centre	JHB		Fourie Von Tonder		083 301 1632	
Action Equipment Co	JHB	Sales	Yolanda	011 452 1298		yolanda@action.co.za
Africaplant.com	Newcastle	Sales	Mark	034 318 3032	082 301 3961	admin@afriplant.com
Afritool – Rent	JHB		Karen Abrams	011 974 2819	082 523 9777	karen.abrams@fluor.com
Alf's Tippers JHB	Sales		Alf Ferreira	011 824 0013	083 260 6929	alfplant@global.co.za
All Africa Supplies	JHB		Jody Da Silva	011 918 9976		sales@allafricasupplies.net
Amplant	Polokwane		Eddie Simpson	015 293 1221	082 904 7694	simpsons@amplant.co.za
Anric Enterprises	JHB		Ric de Nysschen	011 740 0975	082 647 9955	anric@cybertrade.co.za
Aquajet Profiles (Pty)Ltd	JHB	Director & Sales	Brad	011 908 5550	073 470 4958	info@aquajetprofiles.co.za
Arch Equipment	JHB		Greg Archibald		082 803 4227	archhire@mweb.co.za
Associated Equipment Co	JHB	Sales	Jaap	011 801 4911/2	082 892 1327	associated1@xnet.co.za
AVANT SA CPT			Wally	021 851 0722	076 688 3399	info@avantsa.co.za
Azrel Equipment	JHB	Sales	Mike Imrie	(010)590 8048	083 230 3118	mike@azrelequipment.com
B&B Plant / Unicrane	Empangeni		Bob Fogg	035 787 0679	082 570 5781	sales@bbplant.co.za
Barloworld Equipment Co				011 929 0000		
Barloworld Equipment Co	Durban	Parts	Brett Woodhouse	031 705 8500	071 484 1035	bwoodhouse@barloworld-equipment.com
Barloworld Equipment Co	Durban	Parts	R. Haripersadh	031 705 8500		rharipersadh@barloworld-equipment.com
Barloworld Equipment Co	Newcastle	Parts	Milan Pather	034 315 2847	073 971 2046	mpather@barloworld-equipment.com
Barloworld Equipment Co	Newcastle	Sales	Brendan Moore	034 315 2847	073 781 8865	
Barloworld Equipment Co	Richardsbay	CRS	Rolfe Botes	035 797 6300	082 904 9619	jhumphries@bw-eq.com
Barloworld Equipment Co	Bloemfontein	Sales	Quentin Coetzee	051 4091200	078 460 2622	qcoetzee@barloworld-equipment.com
Bell Equipment	Richards Bay	Parts	Jackie Smith	035 907 9111	082 550 8791	bellparts@bell.co.za
Bell Equipment		Sales	Andrew Pretorius	011 928 9700	071 607 3978	partssales@bell.co.za
Bell Equipment	JHB	Used Parts	Fazel Patel	011 928 9700		usedparts@bell.co.za
Bell Equipment	JHB	Machine Sales	Myburgh	011 928 9700		sales@bell.co.za
Bert's Bricks (Pty)Ltd	Potchefstroom	Sales	Lizelle	(018)292 1615		marketing@bertsbricks.co.za
BKB Van Wyk	JHB			017 712 2132		vanwykinfo@telkomsa.net
Blumaq	JHB		John Beukes	011 966 5092		john.beukes@blumaq.com
BLC Plant Company	JHB	Machine Sales	Luigi Stravino	011 555 2000	082 552 7017	luigistravino@blcplant.com
BLC Plant Company	JHB	Machine Sales	Paolo Stravino	011 555 2000	082 852 3721	paolotravino@blcplant.com
BLC Plant Company	JHB	Machine Sales	Andrew McCall	011 555 2000	082 256 0334	andrewmccall@blcplant.com
BLC Parts	JHB	Parts Sales	Robbie Stocks	011 555 2000	082 492 9263	
BLC Parts	JHB	Sales	Mike du Plessis	011 555 2000	082 508 2908	mikeduplessis@blcplant.com
BLC Parts	JHB	Sales	Michael Marriott	011 555 2000	082 905 8983	michaelmarriott@blcplant.com
BMH Trading International	Cape Town		Bradley	021 903 2667	082 780 0084	bradley@bmhtradinginternational.com
Bom-mach / Stampede	JHB	Sales	Jabu	011 394 5704		info@stampede.co.za
Bruforce	JHB		Craig	011 393 1298	083 627 2533	bruforce@lantic.co.za
Bulk Machine Hire	Bapsfontein	Sales	Neil Britz	066 197 0178		karen@bulkmachine.co.za
Burgers Equipment & Spares			Anka Burger	011 979 3636		admin.za@burgersafrica.com
Caldas Engineering & Manufacturing	JHB	Marketing	Melanie	011 453 7797		info@caldas.co.za
Capital Equipment Parts	JHB		Mark	011 568 4215		info@capiparts.co.za
Catech Engineering	JHB		Lee Bray	071 687 9274		lee@cattam.co.za
Centrax	JHB	Sales	Brendan	011 974 4307	083 654 7885	brendan@centraxsa.co.za
Centrax	DBN	Sales	Steve	086 123 6872	083 613 0664	centraxkzn@telkomsa.net
Cranes Direct	Boksburg	Parts Sales	John Thage	011 894 8056	083 254 4068	john@cranesdirect.co.za
Cranes Direct	Boksburg	Sales	Mark Le Roy	011 894 8056	083 233 2140	mark@cranesdirect.co.za
CTC Plant Company	Cape Town	Owner	Colin McOwen	021 386 4190	082 440 4806	colin@ctcplant.co.za
CTC Plant Company	Cape Town	Sales	Evert Jooste	021 386 4190	082 825 8865	evert@ctcplant.co.za
CTC Plant Company	Cape Town	Sales	Peter Groenewald	021 386 4190	072 368 5581	peterg@ctcplant.co.za
CTC Plant Company	Cape Town	Sales	Mark Walker	021 386 4190	082 441 2446	markw@ctcplant.co.za
CTC Plant Company	Cape Town	Sales	Robert Freeman	021 386 4190	079 500 3940	robert@ctcplant.co.za
CTC Plant Company	Cape Town	Parts	Mark Swanepoel	021 386 4190	082 825 6966	marks@ctcplant.co.za
CTC Plant Company	Cape Town	Parts	Nico Vermeulen	021 386 4190	084 525 6966	nic_v@ctcplant.co.za
CTC Plant Company	Cape Town	Service	Olla van den Heever	021 386 4190	082 467 1894	olla@ctcplant.co.za
CTC Plant Company	Cape Town	Transport	Ian Geyser	021 386 4190	082 440 5861	ian@ctcplant.co.za
CTC Plant Company	Cape Town	Transport	Shaun Haman	021 386 4190	082 495 2640	shaun@ctcplant.co.za
DBZ Diesel Parts	JHB			087 751 4555	074 106 2158	jhb@dbzdiesel.com
DBZ Diesel Parts	Cape Town		Jason Martincich	021 556 6502	082 353 5971	jason@dbzdiesel.com
DBZ Diesel Parts	Durban			031 564 8091/2	082 565 8446	durban@dbzdiesel.com
D- MAN SALES	JHB	Sales	Wessels		072 172 7718	wessels@lpss.co.za
Deutz Diesel Engines	Meadowdale		Johan Reiners	(011)974 3549	082 457 1542	miere@icon.co.za
Deutz Diesel Power	Durban	Branch manager	Nivern Pather	031 700 2384	082 375 4912	nivern@deutz.co.za
Deutz Diesel Power	JHB		Nathan Kitchen	011 923 0600		nathan@deutz.co.za
DGI Trading	JHB		Henk Arnold	010 065 0888	083 233 0019	henk.arnold@dgitrading.co.za
Dirt Diggers	JHB		Vic Viljoen	011 023 6674	082 822 3915	vicv@merchantwest.co.za



**“The man who stops advertising
to save money is like the man
who stops the clock to save time.”**

- Thomas Jefferson -

In difficult economic times one should put more effort into promoting
your business, your services and your products.

Cutting back on your advertising will ensure that your business loses ground
to competitors who know and understand this.

Quick Reference

COMPANY	BRANCH	DESIGNATION	CONTACT	TEL NO	CELL	EMAIL
Dosco Hydraulic Eng. cc	Montague Gardens		David Laubscher	021 551 2283	082 579 6465	david@doscocape.co.za
Dosco Hydraulic Eng. cc	Montague Gardens		Mike Hart	021 551 2283	082 228 5031	
Dozer	JHB		Graeme	011 452 1224		info@dozer.co.za
Dozer	JHB	Specialized Sales	Chris Cronje	011 452 1224	082 491 5472	info@dozer.co.za
Dura Equipment	JHB	Sales	Prinsloo Munro	011 918 4760	071 611 7281	prinsloo@durasales.co.za
Dura Equipment	JHB	Sales	Ernest Human	011 918 4760	079 874 5458	ernest@durasales.co.za
Dura Equipment	JHB	Sales	Jerry van Niekerk	011 918 4760	082 895 5611	durasales.co.za
Dura Equipment	JHB	Sales	Coenie Albertyn	011 918 4760	083 251 8046	coenie@durasales.co.za
Dura Equipment	JHB	Sales	Curtis Brown	011 918 4760	083 258 5784	curtis@durasales.co.za
Dura Equipment	Cape Town	Sales	Pottie Potgieter	021 988 6618	083 600 0729	pottie@durasales.co.za
Dura Equipment	Cape Town	Sales	Gerrie du Randt	021 988 6618	082 950 7040	gerrie@durasales.co.za
Dura Equipment	Cape Town	Sales	Charmaine Lombard	021 988 6618	082 777 1544	charmaine@durasales.co.za
E&A Spares	Durban	Sales	Deva	031 700 5791/2	082 659 5521	easpares@jiafrica.com
Earth Mach	Mpumalanga		Chris	017 843 2072	083 232 8713	chris@earthmach.co.za
Earth Moving Plant & Trans.	Pinetown		Richard	031 705 1770	083 777 0152	richard@ept.co.za
EHD Johannesburg		Sales	Lodewyk van As	011 870 5000		ehd@ehd.co.za
Earthmoving Machine Sales	KZN	Sales	Jason	031 777 1025	083 412 1077	jason@sa-ems.co.za
East Coast Gears	KZN	Sales	Johan	031 701 3500	084 244 3324	eastcoastgears@gmail.com
ELB Equipment				011 306 0700		elb@elbequipment.co.za
Equipment Parts & Engines	Isando	Managing member	Attie vd Bergh	011 571 9000	082 655 9276	info@equipmentparts.co.za
ESP	Isando	Div Manager	Gary Wright	011 398 1700	082 449 6773	garyw@espa.co.za
ESP	Benoni	Div Manager	Adrian Erasmus	011 845 2911	083 449 0519	adriane@espa.co.za
ESP	Pretoria	Reg Manager	Willie v.d Merwe	012 804 6706	082 789 0828	williev@espa.co.za
ESP	Middleburg	Div Manager	Leon Bezuidenhout	013 246 2520	083 778 9877	leonb@espa.co.za
ESP	Pinetown	Reg Manager	Shaun Clarke	053 705 4200	082 413 1103	shaunc@espa.co.za
ESP	Cape Town	Reg Manager	Jaco Bekker	021 945 1030	072 384 4901	jacob@espa.co.za
ESP	Port Elizabeth	Branch Supervisor	Rainier Gerber	041 484 4575	083 698 1805	rainierg@espa.co.za
ESP	Bloemfontein	Reg Manager	Craig Wansbury	051 432 4501	082 413 2708	craigw@espa.co.za
ESP	Kimberley	Branch Supervisor	Kingsley Olyn	053 831 8349	082 805 7558	kingsleyo@espa.co.za
Filter Centre	Pinetown	Manager	Viyen Maharaj	031 700 9074	076 727 3985	info@filtercentre.com
Filvent	Witbank		Bernard	013 656 2726		workshopmanager@filvent.co.za
Fluid Blast Engineering	JHB		George Slabbert		082 550 1385	fluid.blast@live.com
Force 8 CC	Cape Town		Justin Nicoll	021 535 1117	082 373 9802	info@force8.co.za
Full Blast Hydraulics	JHB		Andre Calitz	(011)900 3790		info@fullblasthydraulics.com
Fusion Torque Components	JHB	Director	Eldred Carstens	011 828 9023	083 460 6790	eldredfusion@telkomsa.net
Gears for Africa	JHB	Sales	Carl	011 824 2017		carl@gearsforafrica.co.za
Gears for Africa	CPT	Sales	Carl	021 577 1030		carl@gearsforafrica.co.za
GET Spares	JHB	Sales	Raymond	(011)397 5276	082 655 2301	sales@getspares.co.za
GET Spares	JHB	Sales	Freddy	(011)397 5276	082 604 0045	sales@getspares.co.za
GET Spares	JHB	Sales	Clyde	(011)397 5276	082 581 5152	sales@getspares.co.za
Gillroy	Durban		Rob Gillit	031 765 2745	083 661 2057	info@gillroyplant.co.za
G-Man Trading	JHB	Sales	Luke Jr.	011 672 7011		lukej@r@gman.co.za
GO Industry - Dove Bid			John Cowing	0861 463 683	083 662 0237	john.cowing@liquidityservices.com
GR Spares	Pinetown	Sales	Gavin	031 705 5463	082 452 8690	grspares@webstorm.co.za
Grindright Engineering	Middelburg		Piet De Vos	013 246 2308	064 849 2320	grindright@gmail.com
HL Du Plooy	Harrismith		Hennie Du Plooy	082 719 8744	082 574 4212	hennie@hlduplooyplant.co.za
Heavy Duty Earthmoving Parts			Jannie Burger	011 394 4125/6/7		jannie@hdep.co.za
HPE Africa	Jet Park	Sales Manager	Lani	011 397 4670		marketing@hpeafrica.co.za
HPE Africa	Durban	Branch Manager	Adam Armitage	031 700 3426		Adam.armitage@hpeafrica.co.za
HPE Africa	East London	Branch Manager	Leon Dreyer	043 732 1428		leon.dreyer@hpeafrica.co.za
HPE Africa	Cape Town	Branch Manager	Gary Pneumaticos	021 905 0581/2		Gary.P@hpeafrica.co.za
Industrial Engine Parts	JHB	Sales	Morne	011 868 5436	082 851 7514	sales@ieppower.co.za
Industrial Plant Solutions	Natal		David Botha		083 405 3494	sales@ipsglobal.net
Inmine Inala Mining Services	Witbank		Clement Van Der Merwe		082 414 1393	sales@inmine.co.za
ITR Africa	Johannesburg	Sales Mgr - Nat	Carel Zwiegelaa	011 614 0070	076 874 7296	carel.zwiegelaa@itrafrica.com
ITR Africa	Johannesburg	Sales Mgr - U/C	Sean Smit	011 614 0070	072 271 6069	sean.smit@itrafrica.com
ITR Africa	Johannesburg	Sales Mgr - RP	Edwin Luttig	011 614 0070	076 570 0911	edwin.luttig@itrafrica.com
ITR South Africa	Johannesburg	Sales Mgr - Int	Michael Sanderson	011 614 0070	062 311 3376	michael.sanderson@itrafrica.com
ITR South Africa	Middelburg	External Sales	Rudi Le Roux	013 590 5614	083 500 3763	rudi.leroux@itrafrica.com
ITR South Africa	Kathu	External Sales	Mark Ingram	053 723 2245	082 759 2886	mark.ingram@itrafrica.com
ITR South Africa	Cape Town	External Sales	Roy De Bruyn	021 905 7340	079 107 2112	roy.debruy@itrafrica.com
ITR South Africa	Port Elizabeth	Area Manager	Roche Bester	041 451 2222	082 476 9667	roche.bester@itrafrica.com
ITR South Africa	East London	Area Manager	Shaun Smith	043 748 3541	079 948 2965	shaun.smith@itrafrica.com
ITR South Africa	Pinetown	Area Manager	Quintin Pillay	031 941 1133	079 492 4519	quintin.pillay@itrafrica.com
ITR South Africa	Bloemfontein	Area Manager	Jacques Billing	051 011 5620	082 928 1964	jacques.billing@itrafrica.com
ITR South Africa	Pinetown	Area Manager	Quintin Pillay	031 941 1133	079 492 4519	quintin.pillay@itrafrica.com
ITR South Africa	Bloemfontein	Area Manager	Jacques Billing	051 011 5620	082 928 1964	jacques.billing@itrafrica.com
J&T Earthmoving Maintenance	Kepton Park		Alex Savage		081 895 5583	alex@earthmovingmaintenance.co.za
Jacobs Transport	Vereeniging	Sales	Gys Jacobs	010 200 9946	083 544 0275	gys@jacobstransport.co.za
JBS Plant Hire	Klerksdorp		Tonie van den Heever	018 469 1016/7	083 654 7809	jjvdh@lantic.net
Johnson Taylor	JHB	Sales Manager	Graham	011 614 5122		graham@johnsontf.co.za
JW Plant Hire and Sales	Welkom	Sales	Leon	057 355 1119	083 253 6110	j.w.plant@telkomsa.net
Kaltire			Jacques Roux	012 548 9327	083 777 9497	jacques_roux@kaltire.com
Kappa Engineering		Managing Director	Gerrie Visagie	011 828 5506/8	082 575 2199	gerrie@kappaeng.co.za
Kappa Engineering Procurement		Rebuild Director	Nathaniel Hauptfleisch	011 828 5506/8	082 928 6312	nathaniel@kappaeng.co.za
KDH Hydraulics	JHB		Ricus	011 762 9001/2	071 678 3746	ricus@kdhhydraulics.co.za
Kemach JCB	JHB			011 826 6710		sales@kemachjcb.co.za
Kemach JCB	Middleburg			013 244 1839		sales@kemachjcb.co.za
Kemach JCB	Pretoria			012 548 2956		sales@kemachjcb.co.za
Kemach JCB	Bloemfontein			051 432 3978		sales@kemachjcb.co.za
Kemach JCB	Durban			031 700 8278		sales@kemachjcb.co.za
Kemach JCB	Richards Bay			035 751 2718		sales@kemachjcb.co.za
Kemach JCB	CPT			021 949 7442		sales@kemachjcb.co.za

COMPANY	BRANCH	DESIGNATION	CONTACT	TEL NO	CELL	EMAIL
Kemach JCB	Port Elizabeth			041 453 1819		sales@kemachjcb.co.za
Kemach JCB	East London			043 732 1902		sales@kemachjcb.co.za
Kemach JCB	George			044 878 0366		sales@kemachjcb.co.za
Kemach JCB	Mthatha			047 531 1688		sales@kemachjcb.co.za
KHD Electrical			Delville Kuhn	011 392 4444		delville@khdiesel.co.za
Komatsu	Cape Town	Sales	Frederick van Ryneveld	021 951 1251	082 317 2849	info@komatsu.co.za
Komatsu	Bloemfontein	Sales	Ian Banham	051 434 2221/2		ian.banham@komatsu.co.za
Komatsu	Gauteng	Sales	Graeme Armstrong	011 923 1000		Graeme.Armstrong@komatsu.co.za
Komatsu	Gauteng	Sales	Karen van der Walt	011 923 1000		Karen.vanderWalt@komatsu.co.za
Komatsu	Gauteng	Sales	Francois Griesel	011 923 1000		Francois.Griesel@komatsu.co.za
Komatsu	Kimberley	Sales	Jaco Van Heerden	053 832 2061		jaco.vanheerden@komatsu.co.za
Komatsu	Pinetown	Sales	Jacques van der Sandt	031 710 4950	082 888 0995	info@komatsu.co.za
Komatsu	Port Elizabeth	Sales	George Hyman	041 452 6555	082 882 9576	george.hyman@komatsu.co.za
Komatsu	White River	Sales	Fortune Mathiba	013 758 9900	083 675 1756	Fortune.mathiba@komatsu.co.za
Komatsu	Wolmeransstad	Sales	Piet du Toit	018 596 2244	083 271 3567	info@komatsu.co.za
Komax Spares	JHB		Jacques	011 664 8828	082 616 1654	jacques@jsaearth.co.za
Komax Spares	JHB		Gawie	011 664 8828	082 650 0505	
Komax Spares	JHB		Danie	011 664 8828	076 222 2708	
Kruiper Spares	Port Elizabeth	Sales	Gary	041 585 6455	083 321 0819	kruiper@global.co.za
Kruiper Spares	Port Elizabeth	Sales	Bill	041 585 6455	082 569 2740	kruiper@global.co.za
Kruiper Spares	Port Elizabeth	Sales	Philip	041 585 6455	083 235 3919	kruiper@global.co.za
Landboupart	Isando			011 966 9200		info@landboupart.com
Lee's Dozers	JHB		Lee Bray	071 687 9274		leeb@leesdozers.co.za
Leo Hydraulics				011 976 1941		admin1@leohydraulics.co.za
LiuGong Machinery SA	JHB	Parts		011 979 3636		admin.za@burgersafrica.com
LNE Agri Earth (Pty) Ltd	JHB	Sales			083 327 3237	LNE@LNE-AgriEarth.com
LPM Procurement	Germiston	Office	Linda Patricio	011 776 9160	083 637 7122	info@lpmprocurement.co.za
Machinery Contractors	Brits		Wayne	012 250 3534		wayne@machinerycontractors.co.za
Mae Equipment	Witbank	Sales	Thomas Mittag		072 545 6223	info@mae-equipment.com
Mafika Engineering	JHB			011 334 1120		info@mafika.co.za
Marange Plant & Mining	Bloemfontein		Maryke	053 841 0415	082 296 9810	maryke@marange.co.za
Marsay Equipment	Johannesburg		Tim Marsay	011 781 7410	083 654 4248	tim@marsayequip.co.za
Masslift Africa Mitsubishi Forklifts Dbn		Product Support/Spares	Brandon	031 700 8480	078 697 6161	Brandon@mlift.co.za
McKenzie Plant	Sales	Richmond/KZN	Stuart McKenzie	033 212 2181	082 558 7901	sjm@mckenzieplant.co.za
MHS Plant	JHB	Sales	Conrad	010 500 6193	082 781 9481	conrad@mhsplant.com
Midplant Services	JHB	Sales	Kellas	011 967 0055/60	083 675 1385	sales@midplant.com
Midplant Services	JHB	Sales	Jeff	011 967 0055/60	083 657 6123	sales@midplant.com
Midplant Services	JHB	Sales	Lee	011 967 0055/60	083 459 1695	sales@midplant.com
Milltech Engineering			Neil	011 421 7821	083 460 6510	neil@milltech-eng.com
Multi One Evolution	Benoni		Lofty Van Wyk		082 888 8899	info@multi-one.co.za
Mzantsi Transmissions	Johannesburg	Sales	Darryl Cilliers	011 868 5130	071 684 5784	info@gearboxes.me
N12 Truck Yard	Delmas – Mpumalanga				013 661 1039	sales@n12truckyard.co.za
Nduna Spares	Steelport		Natasha Reynders	013 230 3852		ndunaspare@gmail.com
New Beginnings Designs	JHB		Suken	011 791 4120	082 923 7987	suken@nbdesigns.co.za
NUCO Auctioneers	Dooringkloof East Pretoria		Jaco De Jager		011 206 8963	jaco@nucoauctioneers.com
One Stop Procurement	Benoni		Roger Melenas	011 420 1003	079 493 4486	roger@onesp.co.za
P&R Earthmoving	JHB	Sales	Scott	010 823 6385		scott@prearthmoving.com
P&R Earthmoving	JHB	Sales	Grant	010 823 8821		grant@prearthmoving.com
P&R Earthmoving	JHB	Sales	Ladis	010 823 7322		ladislas.l@pandrearthmoving.com
P&R Earthmoving	JHB	Sales	Greg	010 823 6276		greg@prearthmoving.com
P&R Earthmoving	JHB	Sales	Kyle	010 823 6385		kyle@prearthmoving.com
P&R Earthmoving	JHB	Sales	Conrad	010 823 7972		conrad@pandrearthmoving.com
P&R Earthmoving	JHB	Sales	Rikus			rikus@prearthmoving.com
Pacific Construction Equipment		Fairleads Benoni	Mark	011 453 1567	082 441 4587	markivan@mweb.co.za
Paramount Tracks	JHB	Sales		010 007 3258	082 894 5547	sales@paramountracks.com
Paul Heslop Plant Services			Paul Heslop	086 111 5422	074 101 8239	paul@pixie.co.za
PEX Hydraulics	Cape Town	Sales	Nick Kotzee	021 556 3232		nick@pex.co.za
PEX Hydraulics	Johannesburg	Sales	Mark Dickason	011 882 8413		mark@pex.co.za
Pex Hydraulic Repairs	KZN	Sales	Priscilla Shanker	031 705 5050	084 429 8654	priscilla@pexkzn.co.za
Pilot Crushtec	JHB			011 842 5600		sales@pilotcrushtec.co.za
Plant Finder	PE		Shawn Michell	041 379 1717	082 568 4033	shawn@plantfinder.co.za
Powertrans Rebuild Centre	Isithebe		Ricky Naidoo	032 459 5700	082 555 4925	info@powertrans.co.za
Power Transmissions Technology Benoni			William	011 022 8570		info@pttech.co.za
Primeplant	JHB		Francois	011 979 4853	066 489 4891	spares@primeplant.co.za
Queensburgh Plant Sales	JHB	Used Sales	Wikus	011 964 1631	083 235 5665	qpsales@mweb.co.za
Queensburgh Plant Sales	JHB	New Sales	Albert	011 964 1467	082 652 4907	qpsales@mweb.co.za
R21 Trucks	Centurion	Sales Manager	Mark Noble	011 206 8958	082 226 2220	mark@r21trucks.co.za
Ramm Parts	Witbank		Adriaan	076 127 2977		adriaan@rammparts.co.za
Ramm Parts	Witbank		Mark	072 530 7373		marc@rammparts.co.za
Ramm Parts	Witbank		Rodney	073 103 9582		
Randle Parts	KZN	Sales	Stan		083 653 4270	
Randle Parts	KZN	Sales	Justin		083 639 1982	justin.cope@randleparts.co.za
Randle Parts	KZN	Sales	Geoff		074 843 5298	
Rankin Training	DBN		Marcel	031 702 8447	082 909 9070	marcel@rankintraining.co.za
Reef Fuel Injection Services	JHB	Manager	Warren Hauser	011 873 2354		warren@reeffuel.co.za
Rent a Dozer	Marble Hall	Owner	Theodor Kleynhans	013 261 1746	083 459 5593	admin@rentadozer.co.za
Replacement Spares Unltd. / RSU	Pretoria		Sales Paul Pelsier	012 803 8714		paul@rsu.co.za
Rham Equipment	Olifontfontein		Michael Combrink	011 203 7900		info@rham.co.za
Rhino Excavator Hammers	JHB		Paul	086 111 5422	074 101 8239	sales@rhinohammers.co.za
Rhino Excavator Hammers	JHB		Clive	(011)397 3327	071 670 8707	sales@rhinohammers.co.za
Rocktech Earthmoving Wearparts JHB		Manager	Derek Swift	011 793 6838	082 561 4682	derek@rocktech.co.za
Roger's Undercarriage	JHB			011 964 2695	083 974 5851	rogers.uc@mweb.co.za
Ruspet Exhausts	JHB		Russell	011 827 2824	083 448 7669	russell@ruspet.co.za

Quick Reference

COMPANY	BRANCH	DESIGNATION	CONTACT	TEL NO	CELL	EMAIL
Safety Grip	JHB	OTR S/Manager	Tewus Wesse	011 708 6660	083 639 2290	tewus@safetygrip.co.za
Scotty's Plant Hire	Pinetown		Ashley Scott	031 700 8000		scottys.plant@mweb.co.za
Scotty's Plant Hire	Pietermaritzburg		Ashley Scott	033 386 1653/14		scottyspmbsales@mweb.co.za
Sclanders Mech Natal		Sales	Ivan Kaisten	031 700 8083	083 653 3724	ivan@schlandermech.co.za
SEM	JHB	Parts	Barry Fang		072 399 9817	bm@semrsa.co.za
SEM	JHB	Parts	Saaj		061 564 1167	parts1@semrsa.co.za
Sew's Plant & Civils	KZN		Sunash	031 507 2491	082 284 5082	info@sews.co.za
Shin Li Trading	Johannesburg			011 396 1081/87	079 872 0465	sales@shinlitrading.co.za
Shonakhona Logistics				032 943 3428	073 188 2004	
Sino Plant	Gauteng	Sales Manager	Mark Noble	011 206 8958	082 226 2220	mark@sinoplant.co.za
Spec-Cast Wear Parts	JHB	Sales Manager	Shelton Holdsworth	011 396 1713	063 733 4626	shelton@spec-cast.co.za
Spec-Cast Wear Parts	Middelburg	Sales	Herman Bezuidenhout	013 813 1413	072 187 6943	herman@spec-cast.co.za
Spec-Cast Wear Parts	Kathu, N/Cape	Sales	Ilse van Rooi	053 010 1304	067 414 8832	northerncape@spec-cast.co.za
Sintech	JHB	Sales	Jacob Nkabinde	011 823 2359		sales@sintech.co.za
SparePower	JHB	Parts Sales		011 845 4184	082 457 2804	terry@sparepower.co.za
STM Mining	JHB	Sales	Barney v Rooyen	011 894 6192	072 086 6163	barney@stmmining.co.za
Tambani Hydraulics	JHB		Lee Bray	071 687 9274		lee@tamhyd.co.za
The CAT Rental Store / Barloworld		Durban		(031)569 8500	082 909 9188	mnicolia@barloworld-equipment.com
The Seat Connection	JHB	Sales	Lydia/Graham	011 452 6802/6814		info@seatconnection.co.za
TJB Earthmoving Parts Buying JHB			Brad	+27 71 154 3786		brad@tjbearthmoving.co.za
Tommy's Auto Parts	Newcastle		Ahmed	034 375 8111	072 889 2581	exportintl@aol.com
Tractor and Grader Supplies	JHB	Sales	Jeannine	011 392 7533		jeannine@tags.co.za
Tractor and Grader Supplies	Witbank	Sales	Markus	082 921 8634		markusv@tags.co.za
Tractor and Grader Supplies	Witbank	Sales		013 492 2399		markusv@tags.co.za
Tractor and Grader Supplies	Durban	Sales	Theo	082 553 7663		theo@tags.co.za
Tractor and Grader Supplies	Cape Town	Sales	Neal Simpson	082 606 7366		neal@tags.co.za
Tractor and Grader Supplies	Swaziland	Sales	Tiago	+268 2 518 4548		tiago@tags.co.za
Tractor and Grader Supplies	Namibia	Sales	Handre	+264 61 264710/1/2		handre@powerpartsnamibia.co.za
Transand			Fran cois Gerber	044 695 0105	082 454 0934	charlesjnr@transand.net
Trax Global	JHB		Steve	082 954 6253		steve@traxglobal.co.za
Trax Global	CPT		Eddie	082 697 0534		parts@traxglobal.co.za
Trax Global	CPT		Bev	083 505 8955		bev@traxglobal.co.za
Trysome cc	JHB	Supplies	Jaco	(011)823 5650		jaco.vandermerwe@trysome.cc
TTC Engineering & Hydraulics	JHB		Owner Tino	011 845 2837	082 822 4676	tino@ttcenghyd.co.za
TTC Engineering & Hydraulics	JHB		Admin Chanel	011 845 2837		admin@ttcenghyd.co.za
Turboworks	Centurian	Sales		012 653 7507	082 824 8037	sales@turboworks.co.za
Unity	JHB	Sales		011 845 1630	082 457 0221	unitysalesandservices@gmail.com
VR Diesel & Turbo			Wayne	013 246 1003	083 310 9235	wayne@vrdiesel.net
Vendal Civils	JHB		Anton	011 801 4911/2	082 923 5397	vendels@mweb.co.za
Vendel Equipment Sales	JHB	Sales	Jaap	011 801 4911/2	082 892 1327	associated1@xnet.co.za
Vita Plant & Equipment	Brits	Machine Sales & Repairs	Costa Voyiatzakis	012 252 2915	082 521 7095	nicholas@vitaplant.co.za
Vortex transmissions	JHB		Johan	011 452 4430	082 333 1005	vortex@mweb.co.za
Vortex transmissions	JHB		Jan	011 452 4430	082 333 1004	vortex@mweb.co.za
WH Auctioneers	Midrand	Sales	Shannon	011 574 5700	084 520 5000	info@whauctions.com
WH Auctioneers	Midrand	Sales	Mathew	011 574 5700	084 252 5000	info@whauctions.com
WH Auctioneers	Midrand	Sales	Tim	011 574 5700	082 371 1069	info@whauctions.com
WAHA Equipment	Midrand	Sales	Will	011 574 5728	076 037 9516	will@waha.co.za
Wearpact	JHB	Sales	Linda	011 845 3234	083 453 3960	mwwrp@mweb.co.za
Weichai	JHB	Parts	Barry Fang		072 399 9817	bm@semrsa.co.za
WesTrac	AUS		Ron Lanzon	+61 418 927 625		Ronald.Lanzon@westrac.com.au
Wilson Plant	CPT	Sales	Miles Wilson	021 534 9536	082 928 9215	admin@wilsonplant.co.za
Yellow Metal SA	Pretoria	Sales	Pieter Botha	011 970 1299	082 805 8220	sales@ymsa.co.za
ZF Services South Africa	JHB	Sales: Service Parts	Warren Viviers	(011)457 0031	082 776 2759	warren.viviers@zf.com
ZF Services South Africa	JHB	Workshop:Off-road division	Christo Uys	(011)457 0091		christ.uys@zf.com

Want Your company listed in our Quick Reference Guide? Please email your company details to janine@earthbroker.co.za





QPS

QUEENSBURGH PLANT SALES

Keep it simple buy quality



**Your friendly supplier of
new and used
earthmoving parts**

**KOMATSU – HITACHI – HYUNDAI
DOOSAN CATERPILLAR – NEW
HOLLAND – TEREX – JCB CASE
CONSTRUCTION – CARRARO
CUMMINS**

**KEEP IT SIMPLE
BUY QUALITY**

**EARTHMOVING
MACHINE PARTS
SALES REPAIRS**

Albert
082-652-4907
albert@qps.africa

Riccardo
061-224-6829
riccardo@qps.africa

Madeline
082-328-9370
madeline@qps.africa

Dave
082-708-7965
dave@qps.africa

Werner
079-740-2088
werner@qps.africa

Wikus
083-235-5665
wikus@qps.africa

WWW.QPS.AFRICA
TEL (011) 964 1631

Prices cropped!

Get prepared and get up to 30% off



Part No.	Description
268613	1000 hour service kits with lubricants
268616	Cane Pivot / C-Frame rebuild kit
268617	Cane grab and cylinder rebuild kit
361368	Tailwheel Repair kit 120A
361369	V20 Handle kit 120-125A - 220-225A
361370	Tailwheel Repair kit 125A

Part No.	Description
361371	Cylinder Seal kits 125A
361372	Boom Pins & Bush kit 120A
361373	Eaton Pump Repair kit
361374	Cylinder Seal kits 125A (previous generation)
361375	Boom Pins & Bush kit 125A-220A
361376	Cylinder Seal kits 220A

Because your equipment deserves some TLC after a busy season.

*Special valid from November 2020 to end of March 2021
Available from Bell Equipment South Africa and our African, South American and
South East Asia & Oceania dealer network*

FOLLOW US ON    
E-mail: bellparts@bell.co.za
www.bellequipment.com

**Strong Reliable Machines
Strong Reliable Support**

BELL