

your sourcing solution for new & used equipment & machinery

earthbroker

email: janine@earthbroker.co.za web: www.earthbroker.co.za

volume 17 | issue 8 August 2021

POWER TRANSMISSION TECHNOLOGY

EARTHMOVING DRIVELINE COMPONENT SPECIALISTS

⚙️ **TRANSMISSIONS**

⚙️ **TRANSFER CASES**

⚙️ **DIFFERENTIALS**

⚙️ **HYDRAULICS**

⚙️ **SPARE PARTS**

⚙️ **FINAL DRIVES**

⚙️ **BRAKES**

⚙️ **AXLES**



(STILL) KEEPING YOUR PLANT IN MOTION

info@pttech.co.za

www.pttech.co.za

tel: +27 11 022 8570



Scott : +27 10 500 2167

scott@prearthmoving.com

www.prearthmoving.com

YOUR EARTHMOVING COMPONENT SPECIALIST

No. 170 - 3rd Avenue, Bredell
Kempston Park, 1619.
South Africa

ATTACHMENTS • AXLES • BREAK GROUPS • CYLINDERS • ENGINES • FINAL DRIVES • G.E.T. • HYDRAULIC PUMPS • NEW PARTS • POWER TRAINS • TRANSMISSIONS • UNDERCARRIAGE



KOMATSU



KOMATSU 730E
New Armature



KOMATSU 730E
New Pinions



he62ue
CATERPILLAR D9T
Crawler Dozer
Stripping for Spares



bh71bq
KOMATSU PC3000-6
Dismantling for Spares
All components available



KOMATSU 730E
New Torque tube



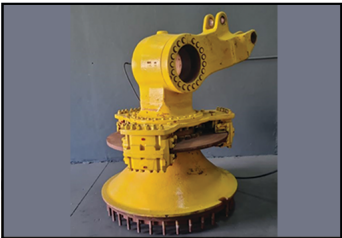
bd64xm
KOMATSU WA800-3
Wheel Loader
Stripping for spares



be62ua
KOMATSU HD785-5
Stripping for Spares



CAT 777F
Good used Wheel Station



KOMATSU 730E
Good used Front corners



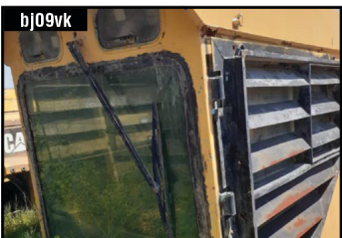
b156aq
CATERPILLAR C9
Industrial Engine



be93hl
CATERPILLAR C27
Engine for CAT D10T
- Rebuilt -



b106fk
CATERPILLAR
R1600 Axle



bj09vk
KOMATSU PC8000
CAB



bj09vj
KOMATSU PC8000
Cooling Pack



bj09vl
KOMATSU PC8000
Rollers



Kyle Silvestre
+27 10 823 6385
sales@prearthmoving.com



Ladislav Mutondo
+27 10 823 7322
ladislav.l@prearthmoving.com



Greg Gavazzi
+27 10 823 6276
greg@prearthmoving.com



Conrad Snyman
+27 10 823 7972
conrad@prearthmoving.com



Rikus Esterhuizen
+27 10 823 6857
rikus@prearthmoving.com

Contact Details

Sales Manager & Editor
Janine Sargeant
 083 456 4027

Design / Layout
Dylan McDonald
 082 485 3001

Sales Contact
 083 456 4027

Electronic Origination & Printing
 ROC Media

The Editors welcome articles and
 photographs, which will be
 considered for publication
 on their merit.

Disclaimer: The Editors and
 Publisher do not necessarily
 endorse any views or
 statements made
 by contributors.

Janine Sargeant
 083 456 4027
 (FAX) 086 685 1258
janine@earthbroker.co.za

Physical Address:
 Suite 16, Hillcrest Office park
 2 Old Main Road, Hillcrest, 3610

Postal Address:
 P.O. Box 2484,
 Hillcrest,
 3650

Banking Details:
 Earthbroker
 First National Bank
 Hillcrest
 Code: 223726
 Account No.: 62295649308



Audit Bureau of Circulations
 of South Africa

We are ABC accredited

Pamms Certificate no:
 2A8DD9F60574FFC2A4EEEE01A



Manufacturer's names, numbers
 & descriptions are used for
 reference purposes only & it is
 not implied that any part listed
 is the product of the manufacturers.



BOMAG

BOMAG GmbH appoints Kemach
 Equipment as the new dealer for South
 Africa, Lesotho and Swaziland



Liugong

LiuGong 4215D "Top Grade" Grader with
 Award Winning Design



**Cummins ReCon®
 Parts & Engines**

Cummins ReCon® Parts and Engines
 reduce downtime and running costs



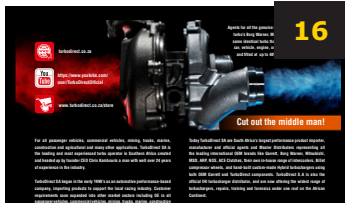
Manitou Southern Africa

Manitou launches new Manitou Centre
 in Gauteng



Kemach Equipment

Bull Machines finds new home with
 Kemach Equipment



Turbo Direct

Cut out the middle man!

I Contents

Advertisers Index	92-93	Mid Plant Services	37
All Africa Supplies	56-57	Mzantsi Transmissions	32
AmPlant	8	New Beginning Designs	7
Associated Equipment	48-49	One Stop Procurement	42
Atlas Masjiene	9	P & R Earthmoving	2
Bell Equipment	27,100	Paramount Equipment	64
BLC Plant	50	Paramount Tracks	65
BLC Trucks	51	Plant Finder	54-55
BLC Parts & Components	52	Power Transmission Technology	1,26
Blumaq South Africa	14-15	Prime Plant	70
Bulk Machine Hire	11	RC Investments	8
Cat ER	32	Rhino Excavator Hammers	53
Catech Engineering	24	Rocktech	76
Centrax	18-19	Ruspet Exhausts	20
CTC Plant Company (PTY) Ltd	58	Safety Grip	60
Dozer Parts	22-23	Shin Li Trading	74-75
Dura Equipment Sales	33	Sintech	72
Dura Parts	34-36	Spec-Cast Engineering	12
Earthmoving Machine Sales	80-81	Spec-Cast Wear Parts	28-30
Earth Mach	73	STM Mining	10,66-67
East Coast Gears	8	Tambani Hydraulics	25
ESP	38-41	Tractor Grader Supplies	46-47
Filter Centre	20	Transand	59
Gears for Africa	71	The Seat Connection	36
Industrial Plant Solutions	79	Turboworks	6
ITR Africa	68-69	Turbo Direct	17
Inmine - Inala Mining Services	62-63	Vortex Transmissions	61
Liugong-Burgers	45	Weichai & SEM Parts	99
LNE Agri Earth (Pty) Ltd	43	Wearpact	21
MAE Equipment	31	Machine Classifieds	88-91
Manitou Southern Africa	5	Quick Reference	95-98
Marsay Equipment	13		
McKenzie Plant Sales	12		



MANITOU LAUNCHES NEW MANITOU CENTRE IN GAUTENG

Manitou Southern Africa, a subsidiary of Manitou Group, has experienced significant growth over the past few years, most of which can be attributed to the company's customer-centric focus and their loyal customer base.

As a subsidiary of Manitou Group, Manitou Southern Africa has been fulfilling the role of subsidiary support to their dealers as well as offering sales, rental, product support and parts directly to customers. With the recent growth pattern, a natural change in the form of growing their customer-facing entity was on the horizon, to provide the unique focussed customer experience. The change will be implemented through separating the business into a Manitou Group subsidiary serving dealers across Middle East Africa and a customer oriented Manitou Centres, located in Johannesburg, Cape Town and Durban.

The Manitou Centre was first launched in Cape Town in 2017, with a view of serving local industry. Substantial growth led to the opening of the second Manitou Centre in KwaZulu Natal in 2019 and today, Manitou is proud to officially be launching the Manitou Centre in Johannesburg. Manitou Centres are at the epicentre of their regions to allow for intensive focus on their markets.

A key focus of your Manitou Centres is to provide value-added solutions. Staff will tailor-make a package to suit your business. Options include extended warranties, service workshops, field service, parts supply, product support and maintenance contracts.



The wide service offering combined with telematics to track the health of your machine, gives the Manitou centre the edge to form a unique mutually beneficial partnership with you.

Alongside the three Manitou Centres, Manitou's well established dealer network continues to distribute and support the Manitou brand in their respective regions through sales, parts, product support and services. Visit a Manitou Centre or Dealer near you for that customer focussed material handling experience!

For more information, contact Manitou Southern Africa on 010 601 3000 or visit their website at www.manitou.co.za

Endless Possibilities



Dig. Load. Move. Repeat.



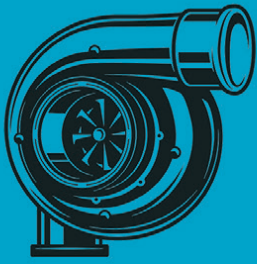
MANITOU SOUTHERN AFRICA

Tel: +27 10 601 3000 **Address:** Proton Industrial Park, Proton Street, Chloorkop

Email: info.msa@manitou-group.com | www.manitou.co.za

Represented throughout the African continent through our network of dealers.





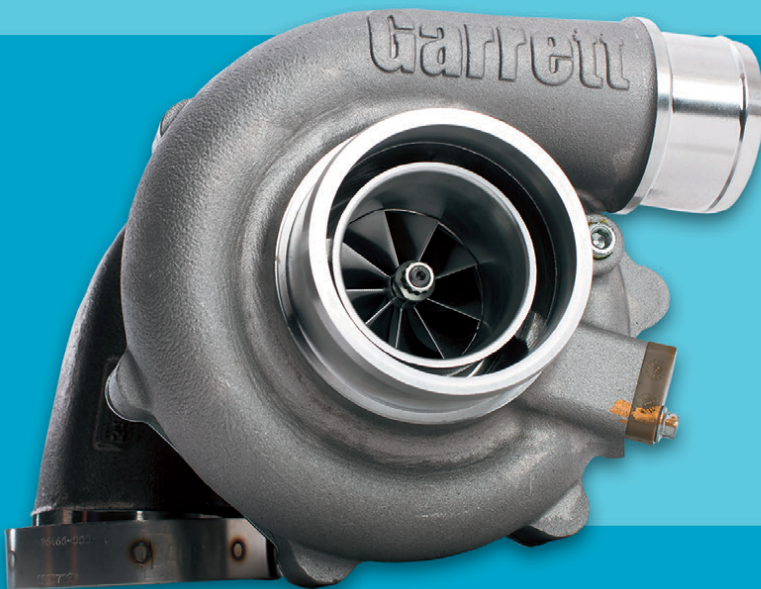
TURBOWORKS

"Best quality turbochargers - no compromise"

For all Construction and Mining machine turbocharger requirements, contact TURBOWORKS for the best and most cost-effective solution.

TURBOCHARGERS

- New
- Reconditioned, service-exchange
- Repairs



SECTORS

- Mining
- Plant hire
- Transport
- Agriculture
- Passenger vehicle
- Generators

**POPULAR SERVICE-EXCHANGE TURBOCHARGERS,
AVAILABLE FOR IMMEDIATE DELIVERY.**



- All makes and models
- 12 Months warranty
- Free "Strip-and-quote"
- Pick-up and deliver
- Supplying the entire African continent



57 Adriana Crescent, Gateway Industrial Park, Rooihuiskraal, Centurion

Tel: +27 12 653 7507

Email: sales@turboworks.co.za

www.turboworks.co.za

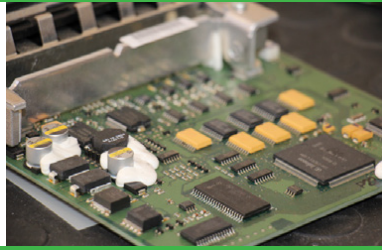
After-hours: +27 82 824 8037

Our Integrated Approach

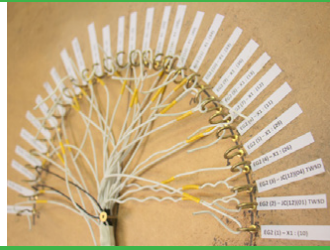
Transmission Rebuilds



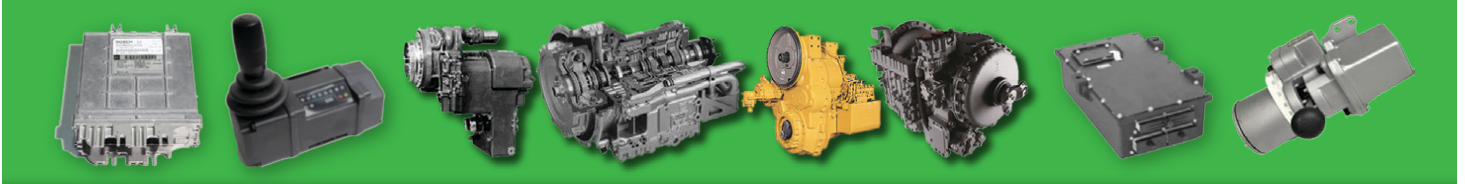
Electronics Laboratory



Wiring Harness Workshop



Vehicle Repairs



New Beginnings Designs rebuilds off highway automatic transmissions and repairs transmission control units and gear selectors.

Visit our website for more info: www.nbdesigns.co.za



We specialise in:

- Transmission overhauls & repairs: Allison, Caterpillar, Clark, Komatsu & ZF
- Ecu & gear selector repairs & design
- Wiring harness repairs & manufacturing
- Dynamometer design & manufacture
- Off-highway vehicle rebuilds & repairs. (Mechanical & electronic)
- Service Exchange
- Transmissions in stock!



@newbeginningsdesigns



@nbdesigns.sa

CONTACT US

Phone: +27 11 791 4120

Email: suken@nbdesigns.co.za

Address: 1146 Minnie Postma Avenue, Florida 1709





SPM Engineering Services cc
east coast gears

Specialising in earthmoving power transmission rebuilds of:

- Front end loaders
- Final drives
- Drop boxes (transfer case)
- Differentials etc.

MANUFACTURE OF ALL GEARS AND REPAIRS



REPAIR CARRIER HOUSINGS/ HUBS



Tel: 031 701 3500 | Cell: 083 383 4943 | Fax/Email: 086 224 3982
Email: eastcoastgears@gmail.com | 24 Henwood Road, Pinetown, KZN



www.AmPlant.co.za

SPECIALISED PLANT HIRE



Asphalt Equipment / Earthmoving Equipment
Milling Machines / Recyclers etc

Contact - Eddie Simpson
Office : 015 293 1221 ext 224 / Cell : 082 904 7694
Email : simpsons@amplant.co.za

Quality used plant for sale



CAT C27 D10T APPLICATION
GOOD USED CORE ENGINE
AVAILABLE FOR REBUILDING



C27 CRANKSHAFT AVAILABLE



C27 RECONDITIONED CYLINDER HEADS AVAILABLE



C27 BLOCK AVAILABLE

VARIOUS LONG SUB ASSEMBLY AVAILABLE

RC INVESTMENTS

FOR MORE INFO PLEASE CONTACT US
084 253 9831 | RCinvestments01@gmail.com

earthbroker publication
your sourcing solution for new & used equipment & machinery

Glossy A4 Magazine Published Monthly

The **Earthbroker** is posted directly to 5300 contacts within the Mining, Quarry, Construction & Earthmoving Industry. We post the **Earthbroker FREE** of charge throughout South Africa.

Copies are sent Nationally and Internationally. Your advert will be updated on our website monthly for **FREE** and our website is optimised regularly.

We design adverts **FREE** of charge and do changes **FREE** of charge whenever required.

A digital version of the magazine will be put up on our website every month.

Our website advertising is FREE of charge!!

abc
Audit Bureau of Circulations of South Africa
ABC Accredited

Produced & published in South Africa

www.earthbroker.co.za
Pamms Certificate no: 2A8DD9F60574FFC2A4EEEE01A



ATLAS

M A S J I E N E

Corner of Great North & Stanley Road, Brentwood Park AH, Johannesburg
Dewald Hattingh: +27(0) 72 547 2198 | +27(0) 11 973 3737



ATLASMASJIENE.CO.ZA | INFO@ATLASMASJIENE.CO.ZA

GOOD USED EARTHMOVING PARTS AND EQUIPMENT

STM

MINING EQUIPMENT PTY(LTD)

Tel: (011)894-6192 / (011)894-3377

Fax: (011)894 7914

barney@stmmining.co.za

donovan@stmmining.co.za

Office Hrs: Mon-Fri 07h00-17h00

OUR PRODUCTS & SERVICES

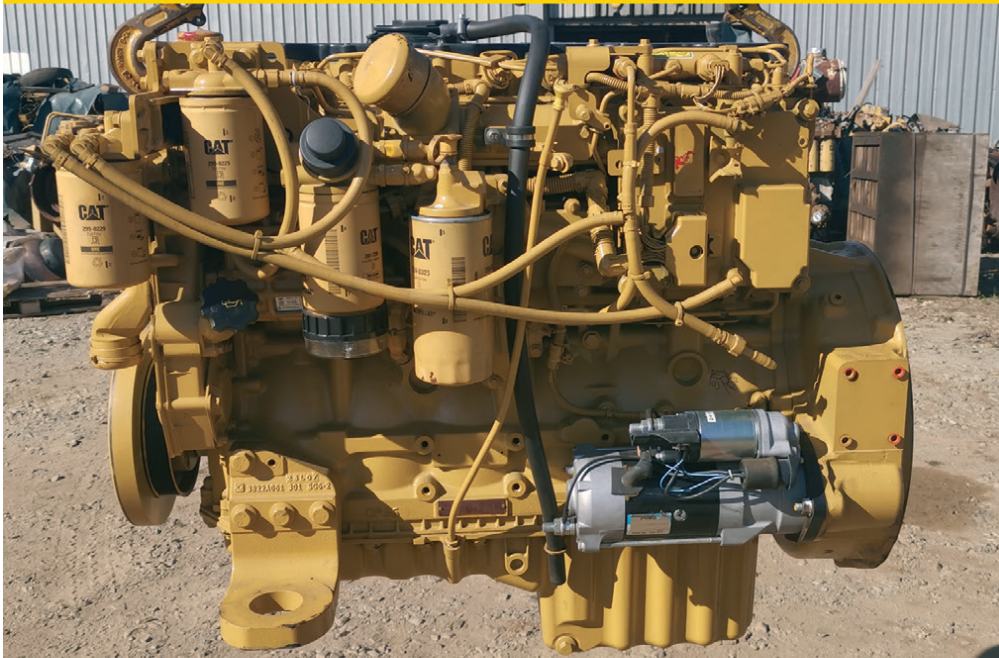
We supply second hand machines and good used parts for most makes of Earthmoving Equipment ie: Cat, Komatsu.

We buy second hand machines to strip for components and parts, dead or alive to keep in stock for customers.

We have a repair shop where we do components and Repair machines for Customers.



ENGINE REBUILDS



MACHINE REBUILDS



Before



After

www.stmmining.co.za

PO Box 6456, Dunswart 1508, 40 Michelson RD. Westwood, Boksburg

BMH IS OFFERING THE FOLLOWING EQUIPMENT FOR SALE.
ALL EQUIPMENT WAS PURCHASED NEW FROM THE RELEVANT O.E.M.
COMPLETE REPAIR AND MAINTENANCE HISTORY AVAILABLE UPON REQUEST.



1 x HITACHI ZX400LCH-5G HYDRAULIC EXCAVATOR
 Year Model: 2016
 Hours (SMR): 14 949



2 x HITACHI ZX330LC-5G HYDRAULIC EXCAVATORS
 Year Model: 2017
 Hours (SMR): 9 173 & 15 539



1 x HITACHI ZX470LC-5G HYDRAULIC EXCAVATOR
 Year Model: 2013
 Hours (SMR): 13563



1 x BELL 850J DOZER
 Year Model: 2018
 Hours (SMR): 6112



6 x BELL B30D ARTICULATED DUMP TRUCKS
 Year Model: 2008 - 2013 / Hours (SMR): Between 10 000 - 25 000 hours



4 x BELL B30E ARTICULATED DUMP TRUCKS
 Year Model: 2018 / 2019
 Hours (SMR): 6119, 6292, 5783, 6877



1 x MERCEDES BENZ ATEGO 1517 - 8000L DIESEL BOWSER
 Year Model: 2000
 KM Reading: 48232

Prices available on request.
 Viewing of equipment can be arranged.

Contact Person:
 Karen van Zyl - 011 964 1179 / info@bulkmachine.co.za





Contact for more details: Tel: 033 212 2181
Cell: 082 558 7901 | Email: sjm@mckenzieplant.co.za



BELL / KATO HD2045 MK3



MERC 2628 - V8
WITH 16000L TANK, PTO PUMP



KOMATSU PC450 LC-8
13 250 HOURS



LOWBED
TWO AXLE TRAILER



KOMATSU WA380-6
F.E.L.



BELL B20D
WATER TANKERS



You can now find us on Facebook, go to www.facebook.com/mckenzieplanthire



SPEC-CAST ENGINEERING

Trusted to deliver

Bulk Materials Handling Products

Bucket Elevators



Steel Buckets

Suitable for elevating sharp, bulk density materials



HDPE Buckets

Suitable for handling large volumes of all types of grains, feed and most food products



Nylon Buckets

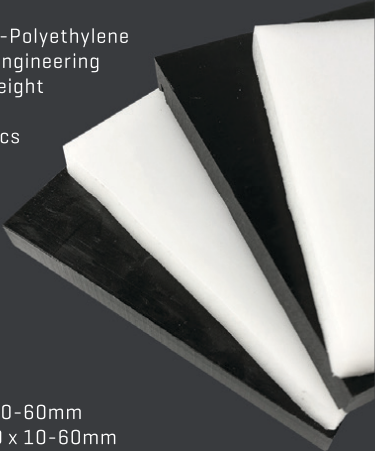
Suitable for high impact & abrasion resistance. Better heat resistance and handling hot, abrasive and sticky materials

HDPE & UHMWPE Sheets

Ultra-High-Molecular-Weight-Polyethylene (UHMWPE) is thermoplastic engineering material, and its molecular weight can reach 4.5 to 9 million. It combines many characteristics such as abrasion-resistance, impact resistance/absorption, chemical corrosion resistance, low temperature resistance and self-lubrication etc.

Available in Black or White

HDPE SHEET: 2000 x 1000 x 10-60mm
UHMWPE SHEET: 3080 x 1220 x 10-60mm



Contact our Bulk Materials Handling Specialist: Brian Jansen
Cell: +27 71 147 6868 | Email: brianj@spec-cast.co.za | Tel: +27 11 396 1713/7 | www.spec-cast.co.za



MARSAY EQUIPMENT
QUARRY | MINING | CONSTRUCTION

Marsay Equipment specialises in the buying, refurbishment and selling of good used construction, mining, stone crushing and transport equipment.

We operate throughout southern Africa, mainly the SADC region. We are based in Johannesburg South Africa and have been in business for 44 years.

TIM MARSAY +27 83 654 4248
PATRICK MARSAY +27 79 187 7937

tim@marsayequip.co.za
www.marsay.co.za



HADFILEDS 36X26 JAW CRUSHER
REBUILT



HADFIELDS 16X10
JAW CRUSHER



WINGET 400 R
CONCRETE MIXER
DIESEL OR ELECTRIC



NEW KAROO MOBILE DRY
BATCHING PLANT



WATER & DIESEL TRAILERS
OF VARIOUS SIZES

EQUIPMENT VALUATIONS
DO YOU NEED AN ACCURATE MARKET VALUE OF YOUR USED EQUIPMENT?
PLEASE CONTACT US!



www.blumaq.com

Follow us on:



Spare parts suitable for VOLVO

We offer a wide range of items
with immediate delivery for your
VOLVO earthmoving equipment.



Alternative spare parts for Caterpillar

We offer a wide range of items
with immediate delivery for your
CATERPILLAR earthmoving equipment.



**Berco dealer in
Spain, Zambia,
Turkey and
South Africa:**



Contact:

+27 11 966 5092 **Johannesburg**
+26 096 0923 962 **Kitwe**
john.beukes@blumaq.com

Caterpillar®, komatsu®, cummins®, volvo® and case® are trade brands registered by their owners and are only used for reference purpose of the application of our spare parts.

Branches in Spain: Alicante | Almería | Asturias | Barcelona | Galicia | Madrid | Mérida | Ponferrada | Sevilla | Tenerife | Zaragoza
Branches in the world: Chile | United States | France | Portugal | Turkey | China | Russia | Italy | Romania | South Africa | Zambia | Peru | Kazakhstan



www.blumaq.com

Follow us on:



Following our success as **Berco** product distributor in Zambia, Blumaq South Africa has now also been appointed a distributor for this quality product in South Africa.

Blumaq South Africa now also offers **Berco quality undercarriage parts and repairs** from our operation based in Wadeville, Johannesburg.

Our fully serviced Track Undercarriage workshops offers a full service including Turning of Pins & Bushes / Re-stripping of Grouser shoes / Track Link repairs / Idler and Roller rebuilds / Track Frame Rebuilds.

Contact us today for a free on site wear assessment of your undercarriage components.

Contact:

+27 11 966 5092 **Johannesburg**

+26 096 0923 962 **Kitwe**

john.beukes@blumaq.com

**Berco dealer in
Spain, Zambia,
Turkey and
South Africa:**



Caterpillar®, komatsu®, cummins®, volvo® and case® are trade brands registered by their owners and are only used for reference purpose of the application of our spare parts.

Branches in Spain: Alicante | Almería | Asturias | Barcelona | Galicia | Madrid | Mérida | Ponferrada | Sevilla | Tenerife | Zaragoza
Branches in the world: Chile | United States | France | Portugal | Turkey | China | Russia | Italy | Romania | South Africa | Zambia | Peru | Kazakhstan

TurboDirect



The home of
Garrett
ADVANCING MOTION
Turbochargers



turbodirect.co.za



<https://www.youtube.com/user/TurboDirectOfficial>



www.turbodirect.co.za/store



Agents for all the genuine international OE replacement turbo's Borg Warner, Mitsubishi, Garrett and IHI, the same identical turbo that was originally fitted to your car, vehicle, engine, or machine from day one. Sold and fitted at up to 40% less than the market price.

Cut out the middle man!

For all passenger vehicles, commercial vehicles, mining, trucks, marine, construction and agricultural and many other applications. TurboDirect SA is the leading and most experienced turbo operator in Southern Africa created and headed up by founder CEO Chris Kambouris a man with well over 24 years of experience in the industry.

TurboDirect SA began in the early 1990's as an automotive performance-based company, importing products to support the local racing industry. Customer requirements soon expanded into other market sectors including OE in all passenger vehicles, commercial vehicles, mining, trucks, marine, construction and agricultural and many other applications. Today TurboDirect SA is active in all turbocharger market sectors providing complete turbochargers and all related repair components, as well as carrying out the repairs to manufacturer specifications and standards, on all the industries makes and model turbochargers.

Today TurboDirect SA are South Africa's largest performance product importer, manufacturer and official agents and Master Distributors representing all the leading international OEM brands like Garrett, Borg Warner, Mitsubishi, MSD, ARP, NOS, ACE Clutches, their own in-house range of intercoolers, Billet compressor wheels, and hand-built custom-made Hybrid turbochargers using both OEM Garrett and TurboDirect components. TurboDirect S.A is also the official IHI turbocharger distributor, and are now offering the widest range of turbochargers, repairs, training and forensics under one roof on the African Continent.

Chris Kambouris is the most recognised specialist, expert, and top Guru when it comes to Turbo's he has direct access to the largest international leading OE turbocharger brands and has the expertise and experience working successfully in this industry and is repeatedly called upon for technical advice on Turbo's by the motor trade, OEMs, Race teams, Mining, Agriculture, Earth moving, Trucks and Transport.

The most advanced repair centre and forensic laboratory in S.A.

The largest performance product importer and local manufacturer, with race proven products exported to 7 countries to date.

In-house CNC engineering capabilities, 4-wheel drive dynamometer, engine dynamometer and testing services.

Advanced fault finding on all Vehicle Turbo's



For more information call TurboDirect SA on tel. 011 392 5195 or e-mail them on info@turbodirect.co.za or go to the web site www.turbodirect.co.za Trade enquiries welcomed. 40 Electron Avenue, Isando 1600 - PO Box 6876 Greenstone 1616



Did you know...

- We do Turbocharger repairs
- Most advanced turbo repair centre in Africa
- Full CNC engineering
- Turbo flow bench
- High speed VSR balancing
- Actuator programming
- In-house built test bench
- Full turbo simulation

We specialise in turbocharger repairs for...



- Yellow machinery
 - Plant
 - Agriculture
 - Commercial vehicles
- ...at unmatched pricing & unmatched quality



Direct from the Importers!



**ON THE RIGHT
TRACK WITH**

CENTRAX
Since 1974

www.centraxsa.com

8 Grader Road, Spartan Ext3

**“LET’S
DO
THIS”**

**“YOU CAN WITH
CENTRAX”**



**EXPERTS IN UNDERCARRIAGE
& WEAR PARTS**

Head Office

Tel: (011) 392 5055 / (011) 392 5056 / Fax: (011) 392 3091

Durban Branch

Tel: 086 123 6872 / Cell: 083 613 0664 / Email: centraxkzn@telkomsa.net

www.centraxsa.com

Manufacturers names, numbers and descriptions are used for reference purposes only & is not implied that any parts listed is the product of these manufacturers.



**ON THE RIGHT
TRACK WITH**

CEN TRAX
Since 1974

www.centraxsa.com

Head Office: Tel: (011) 392 5055 / (011) 392 5056 / Fax: (011) 392 3091
Durban Branch: Tel: 086 123 6872 / Fax: 086 529 4683 / **Steve:** 083 613 0664

EXPERTS IN UNDERCARRIAGE & WEAR PARTS



**EXPERIENCE THE WORLD CLASS
CENTRAX UNDERCARRIAGE
CONVERSION & REPAIR PROCESS**

**YOUR ONE STOP
UNDERCARRIAGE &
WEAR PARTS SHOP**

- **IDLER REBUILD FACILITY**
- **TRACK WORKSHOP**
- **UNDERCARRIAGE**
- **GROUND ENGAGING TOOLS**



Manufacturers names, numbers and descriptions are used for reference purposes only & is not implied that any parts listed is the product of these manufacturers.



FILTER CENTRE

Quality Lubricants
NOW IN STOCK

Leaders in Heavy-Duty Filtration

AGRICULTURE



Ruspet Durban Branch
Storm Hill
Cell: 081 737 1598
storm@ruspet.co.za

www.filtercentre.com
info@filtercentre.com
031 700 9074



Russell at Head Office
Tel: 011- 827 2824/6
Fax: 011- 827 2850
russell@ruspet.co.za
felicity@ruspet.co.za

WE MUFFLE THE INDUSTRY

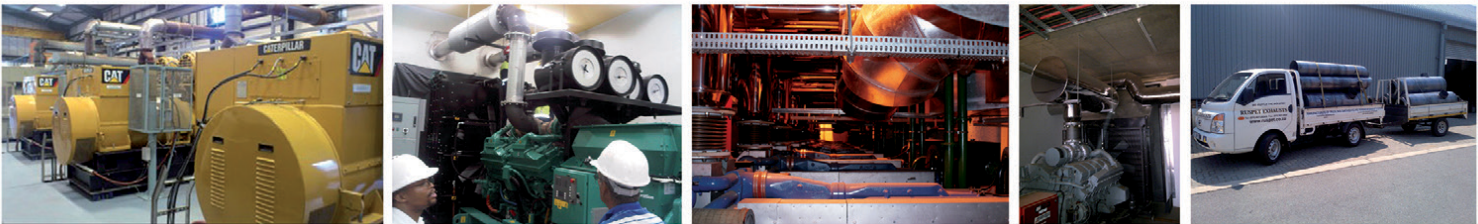
RUSPET EXHAUSTS

MANUFACTURERS OF TRUCK, BUS, EARTHMOVING & GENERATOR EXHAUSTS

Ruspet Durban Branch
Storm Hill
Cell: 081 737 1598
storm@ruspet.co.za



ALL OUR EARTHMOVING SILENCERS ARE MADE TO OEM SPEC.
WE HAVE NUMEROUS SPECIFICATIONS FOR CATERPILLAR, KOMATSU AND BELL ETC.



A BIRD'S EYE VIEW ON PARTS SUPPLY & MANAGEMENT

MANUFACTURERS, SUPPLIERS AND STOCKISTS OF:

**CUTTING EDGES | MOLD BOARD LINERS | GRADE BLADES
TIPS AND ADAPTORS | RIPPER SHANKS | END BITS**

WE MANUFACTURE, SUPPLY AND STOCK G.E.T. FOR:

**CAT | KOMATSU | VOLVO | HITACHI | BELL | LIEBHERR | JCB | CASE
TEREX | FURUKAWA | LIUGONG | SANY | SANYO | SHANTUI | FIAT**

WEARPACT ALSO OFFERS A SPECIALIST BUCKET REPAIR SERVICE

WEARPACT

☎ 011 421 4705 / 011 845 3234 / 011 845 3272

☎ 011 421 8761

✉ mwwrp@mweb.co.za

*MANUFACTURER'S NAMES, NUMBERS & DESCRIPTIONS ARE USED FOR REFERENCE PURPOSES ONLY. IT IS NOT IMPLIED THAT ANY PART LISTED IS THE PRODUCT OF THE MANUFACTURERS.

www.wearpact.co.za

DOZER

EARTHMOVING

T +27(0)11 452-1224 Danie +27(0)1182 441-2895 / Greg +27(0)11 71 683-6012

21 Simba Street, Sebenza, Edenvale, Johannesburg, Gauteng, South Africa

MACHINES BEING STRIPPED FOR PARTS

CATERPILLAR	LIEBHERR	KOMATSU
<ul style="list-style-type: none">• 725, 730, 740 ADT's• 777D/F Dump Truck• 785D Dump Truck• 988G/H Wheel Loader• 992G Wheel Loader• D11R/T Dozer	<ul style="list-style-type: none">• R984 Excavator• R9100 Excavator• R9350 Excavator	<ul style="list-style-type: none">• HD785 - 5• WD600 - 3



CAT 725
Service Truck For Sale



2 x CAT 773E
Dump Trucks For Sale



CAT 834K
Wheel Dozer For Sale



CAT 962H
Wheel Loader For Sale



CAT 769D
Water Tanker For Sale



CAT 824G Series 2
Wheel Dozer For Sale



CAT 988G 3456
Engine Assembly For Sale



CAT 992G 3508
Engine Assembly For Sale



CAT 773D/E
Final Drives For Sale



CAT 777F
Final Drives For Sale (Exchange)



CAT 992G/K
Final Drive Groups For Sale



CAT D11R/T
Final Drives For Sale



+27(0)172 338 2196

E info@dozer.co.za

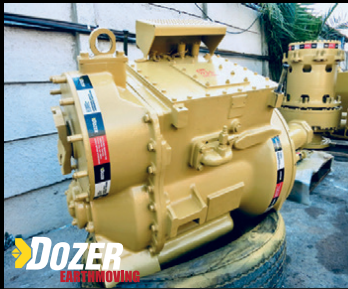
W www.dozer.co.za



www.instagram.com/dozerearth



www.facebook.com/dozerparts



CAT 773D/E
Transmission Group For Sale



CAT 777F
Transmission Gp For Sale (Exchange)



CAT D9T
Transmission Group For Sale



CAT D11R/T
Transmission Group For Sale



CAT 725/730
Final Drives For Sale



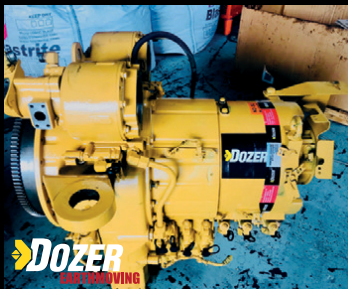
CAT 740
Final Drives For Sale



CAT 725/730
Differential Groups For Sale



CAT 740
Differential Group For Sale



CAT 725/730
Transmission Group For Sale



CAT 740
Transmission Group For Sale



CAT 725/730
Cabin Group For Sale



CAT 740
Cabin Group For Sale



CAT 740
Diesel Tank For Sale



CAT 777D/F
Bowl Assembly For Sale



CAT 988G
Bucket Group For Sale



CAT 992G
Bucket Group For Sale



Liebherr 9350
Splitter Box For Sale



Liebherr 9350
Swing Gear For Sale



Liebherr 9350
Cylinders For Sale



Liebherr 9350
Bucket Group For Sale

**CELEBRATING OVER 30 YEARS' EXPERIENCE IN THE
MINING AND ENGINEERING INDUSTRY**

CATECH



Catech has over 30 years of experience in the repair of track frames and thus it has become one of the more specialised components we can repair and refurbish. We can repair brands such as Caterpillar, Liebherr, Komatsu, Hitachi and many more. Catech has also developed specialised wear packages meant to lengthen the lifetime of track frames by over 30% and reduce the damage caused by rocks and other debris climbing between the tracks.



WE CAN REPAIR ALMOST ANY BRAND OF TRACK FRAMES, OUR SERVICES INCLUDE:

MPI/UT test and repair where necessary | Changing bogie pins | Line boring of: Main bores - Lock bores - Pivot bores
Equaliser bores - Bogie pin bores | Repair of track adjusters | Repair of cracks and reinforcement of the track frame
Replacement or repair of major and minor bogies

We also add a thicker top plate to add extra strength to your track frames

ADDITIONALLY WE OFFER SERVICE EXCHANGES ON OUR TRACK FRAMES

12 ROLLER ST, SPARTAN,
KEMPTON PARK, 1619

011 392 3718
johan@cattam.co.za | lee@cattam.co.za
www.catechtambani.co.za



ISO 9001 :2015

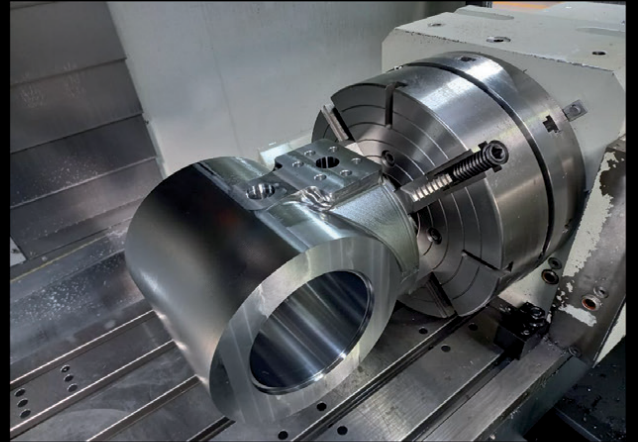
Call: +27 (0)11 975 9631
Fax: +27 (0)11 975 4315
info@tambanihydraulics.com

Lee Bray: +27 (0) 71 687 9274

Petrus Tambani: +27 (0) 82 908 2352

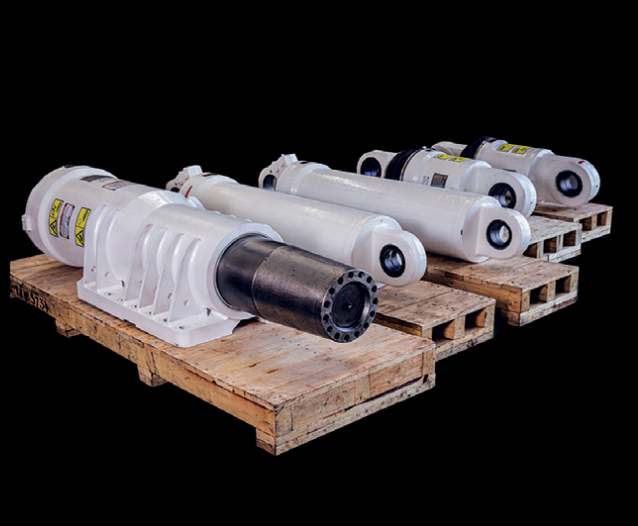
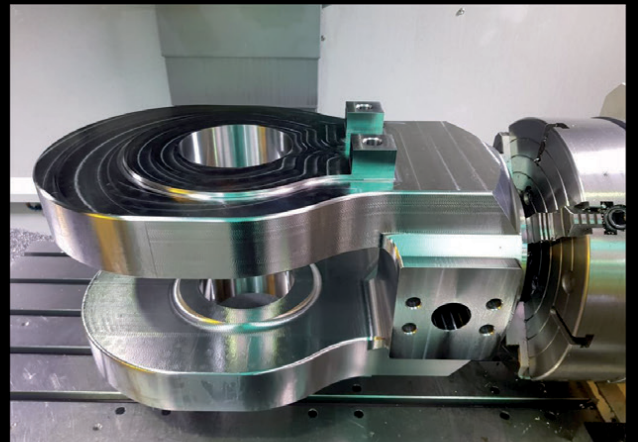
Email: lee@tamhyd.co.za / petrus@tamhyd.co.za

Tambani Hydraulics is an all-in-one proudly South African Level 4 BBBEE company that offers & specialises in the supply, manufacture & repair of all hydraulic cylinders, serving the Mining, Earthmoving & Construction Industries throughout Africa. We adhere to strict quality procedures that accompany the latest ISO 9001: 2015 as well as OEM protocols, giving you great quality & peace of mind.



Other Services We Offer, But Are Not Limited to Include:

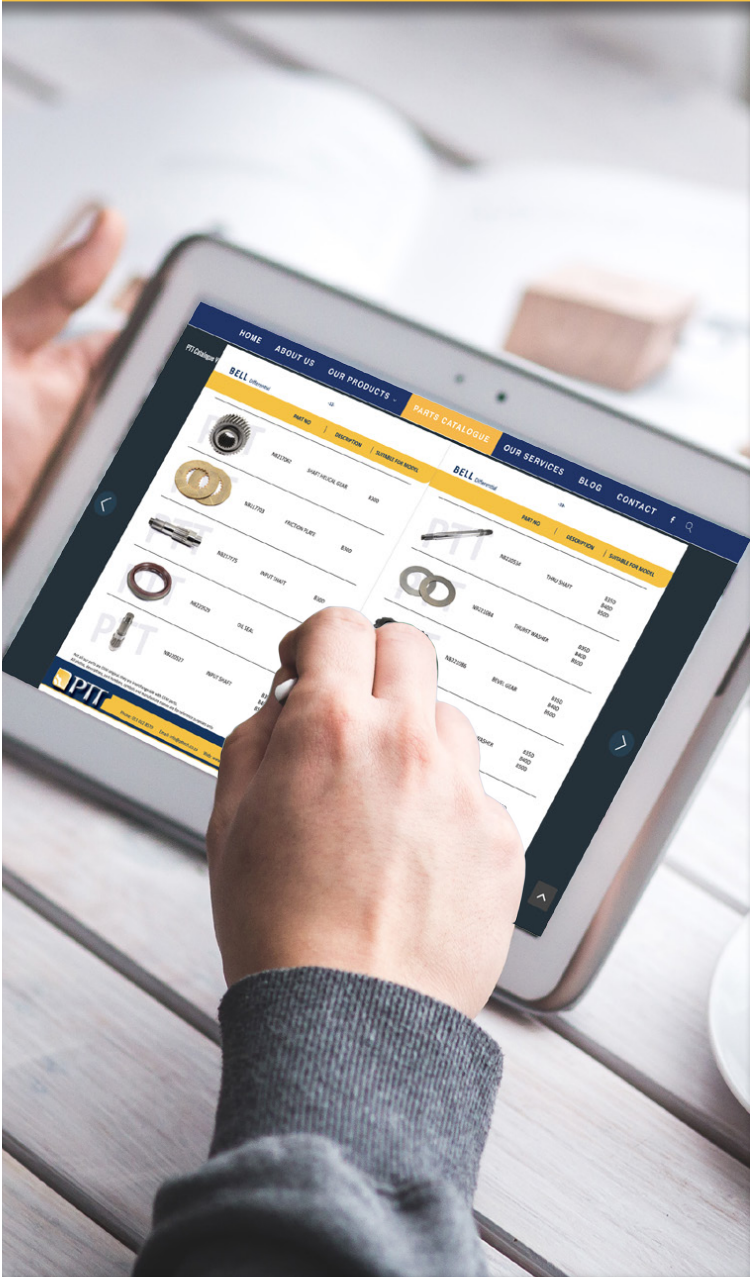
- A wide variety of service exchange units immediately available.
 - A 24hr Stand-By & Breakdown Service
- Service, repair, manufacturing, and supply of hydraulic cylinders to an industry leading standard.
- Extensive, Industry Leading Warranty on All Our Products
 - Engineering Workshop



POWER TRANSMISSION TECHNOLOGY

EARTHMOVING DRIVELINE COMPONENT SPECIALISTS

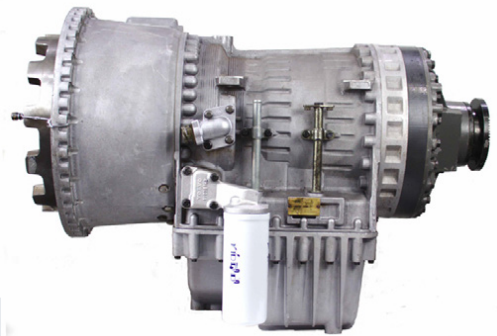
TRANSMISSIONS



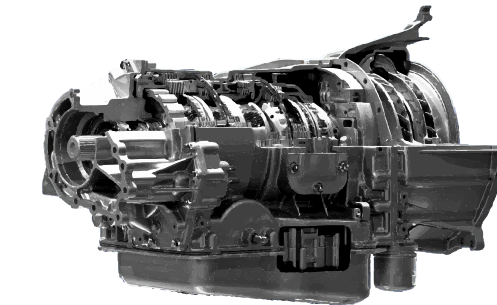
CAT



VOLVO



BELL



**Rebuilds or Service Exchange Units available*



PTT

KEEPING YOUR PLANT IN MOTION

View our online catalogue for more: pttech.co.za/product-catalogue or Contact us: Tel: 011 022 8570

BELL

LubeCheck

**WEAR[®]
CHECK**
Condition Monitoring Specialists

Analysis by

AVOID DOWNTIME



**Minimise the
risk with
Bell LubeCheck
A predictive
maintenance
tool that
analyses oil to
save you time
and money.**

BENEFITS

- Identify what preventative maintenance is needed
- Detect abnormal wear
- Detect oil degradation
- Detect oil/component contamination
- Detect impending failures
- Verify the oil in use
- Optimise service intervals
- Avoid unnecessary overhauls
- Avoid loss of production



**WEAR[®]
CHECK**
Condition Monitoring Specialists

bellparts@bellequipment.com
www.bellequipment.com

FOLLOW US ON



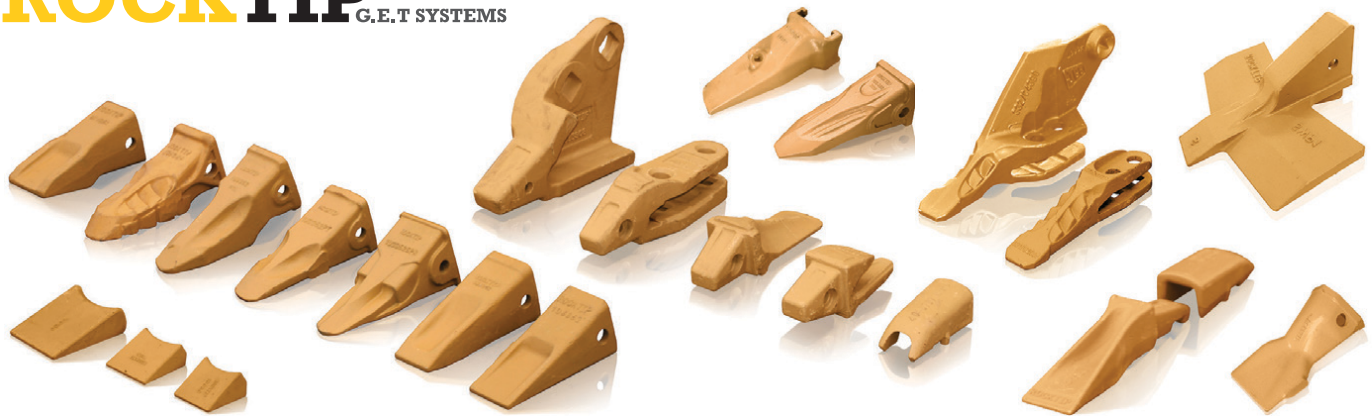
Contact your nearest Customer Service Centre for pricing.



SPEC-CAST WEAR PARTS
Trusted to deliver

Spec-Cast Wear Parts (PTY) Ltd is a leading manufacturer specializing in the supply of ground engaging tools, undercarriage, undercarriage components, track frames, suspension group replacement parts, agricultural wear parts, general castings and forgings for the construction, mining and agricultural industries.

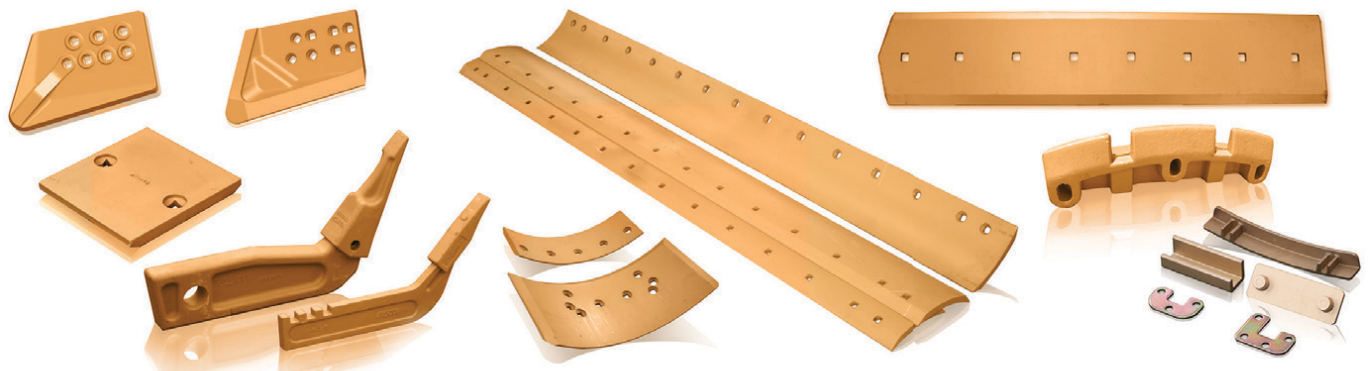
ROCKTIP G.E.T SYSTEMS



Teeth and Adapters for Various Models



Wear Protection



Blades, Cutting Edges, End Bits and Grader Wear Parts

Manufacturers of G.E.T to fit:

CATERPILLAR
KOMATSU
NEW HOLLAND

TEREX
JCB
MASSEY FERGUSON

ESCO
HYUNDAI
CASE

LIEBHERR
DAEWOO
BOFOR

H & L
BUCYRUS
LIUGONG

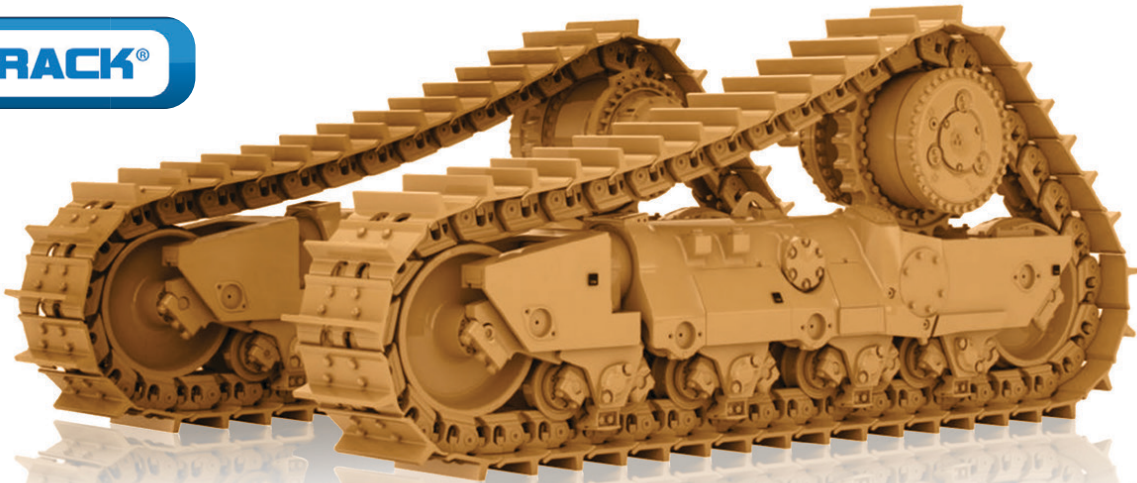
BOBCAT
MTG
KUBOTA

Manufacturer's names, numbers, symbols and descriptions are used for reference purposes only and it is not implied that any part listed above is the product of the manufacturers.

Spec-Cast offers a wide range of undercarriage components covering the entire range of modern crawler machine applications in the construction, mining, utility, forestry, road, building, and agricultural industries. Covering all makes and models of machines, from drilling machines to hydraulic excavators, as well as dozers, auxiliary machines, conveyors and customised solutions.



SPEC-CAST WEAR PARTS
Trusted to deliver



Spec-Cast Wear Parts is an authorized Dealer for ITM and VEMATrack undercarriage parts.
Call our undercarriage experts today!



Chains



Rollers



Sprockets



Idlers



Shoes



Rubber Tracks

CATERPILLAR	HITACHI	KOMATSU	LIEBHERR
6018 RH90	EX1200	PC1250	R9100
6030 RH120E	EX1800/1900	PC2000	R9150
6040/50	EX2500/2600	PC3000	R9250
RH170/200	EX3500/3600	PC4000	R9350
6060 - RH340	EX5500/5600	PC5500	R9400
7495 - 495HRH	EX8000	D375	R995
D8, D9, 10 & D11		D475	R996
			R9800

Our track workshop is available to support all your undercarriage needs

Turning of Pins & Bushes
Remove/Fit Track Shoes

Re-Build Idlers
Re-Shell Rollers

Re-Strip Grouser Shoes
Re-Rim Sprockets

With branches and distributors located in prime areas throughout South Africa, as well as several African countries, Spec-Cast is able to provide the Earthmoving, Mining and Agricultural industries with an efficient, cost effective supply and distribution network.

JHB HEAD OFFICE

+27 11 396 1717/13
aimee@spec-cast.co.za
11 Elgin Street, Pomona,
Kempton Park, Johannesburg

www.spec-cast.co.za

MIDDELBURG
+27 13 813 1413
middelburg@spec-cast.co.za
6 Jaspis Street
Middelburg, Mpumalanga

NORTHERN CAPE
+27 53 010 1304
northerncape@spec-cast.co.za
Section C3, Portion of Farm Waterraad
Kathu, Northern Cape

Follow us:





SPEC-CAST WEAR PARTS

Trusted to deliver

CATERPILLAR & KOMATSU DOZER & EXCAVATOR TRACK FRAMES



SERVICE EXCHANGE

Our Service Exchange Program provides you with a high-quality track frame rebuild solution. All PEX units are like-new, quality track frames that is on hand for delivery to keep your machine productive and keep your costs minimal.

Spec-Cast’s PEX units gives you the advantage of an immediate trade-out of critical components that allows your machine to get back to work as quickly as possible.

TRACK FRAME REPAIRS

Spec-Cast offers partial repairs and full track frame rebuilds, using only quality approved parts including some OEM components that is critical to the longevity of the frame. Strict adherence to our QCP [Quality Control Procedures] provides peace of mind and builds trust in the Spec-Cast Brand. Spec-Cast’s Track Frame Repairs covers a wide range of crawler machines types such as dozers, excavators and shovels across multiple manufacturers and applications.

TRACK FRAME COMPONENTS

Caterpillar and Komatsu Dozer aftermarket track frame components of the highest quality and standard are stocked for immediate supply.

- Bogie Pins and Bogie Pads
- Roller and Idler Caps
- Track Guides
- Equalizer Bars and repair components
- Trunnion’s and repair components
- Bushings and Seals
- Minor Bogies



JHB HEAD OFFICE

+27 11 396 1717/13
undercarriage@spec-cast.co.za
11 Elgin Street, Pomona,
Kempton Park, Johannesburg

www.spec-cast.co.za

MIDDELBURG
+27 13 813 1413
middelburg@spec-cast.co.za
6 Jaspis Street
Middelburg, Mpumalanga

NORTHERN CAPE
+27 53 010 1304
northerncape@spec-cast.co.za
Section C3, Portion of Farm Waterraad
Kathu, Northern Cape

Follow us:



THOMAS MITTAG
Cell: +27 72 545 6223
Mail: info@mae-equipment.com

MAE Equipment
Witbank/Riverside
(Yard)

www.mae-equipment.com

MAE

EQUIPMENT

CAT D9R DOZER



2013 model
new undercarriage / new serviced
Call for Price

CAT D9R DOZER



2013 model
low hours / new serviced
Call for Price

KOMATSU D375A-6



2011 model
refurbished & new undercarriage
Call for Details

KOMATSU D375A-5



2008 model / "as is"
or refurbished 2 units available
Call for Price

KOMATSU D155AX-7



2013 model
refurbished / imported EU
Call for Price

ATLAS-COPCO D65-FLEXIROC



2015 model
refurbished
Call for Price

ATLAS-COPCO D65 SMARTROC



2015 model
refurbished
Call for Price

ATLAS-COPCO T50 DRILL-RIG



2016 model
low hours
Call for Price

ATLAS-COPCO DML DRILL RIG



2009 model
new service
Call for Price

ATLAS COPCO DM30 DRILL RIG



2012 model
ready for production
Call for Price

ATLAS-COPCO DM30-MK2



2018 model
ready for production
Call for Price

SANDVIK DP1500 PANTERA



2010 & 2012 model
refurbished
4 units available

**WE BUY ALL KINDS OF EARTHMOVING,
CONSTRUCTION OR MINING MACHINERY**

**WE PAY CASH
WITHIN 24 HOURS**

PLEASE CONTACT OR SEND OFFERS
TO INFO@MAE-EQUIPMENT.COM

**WE OFFER EASY FINANCE
FOR OUR MACHINES**

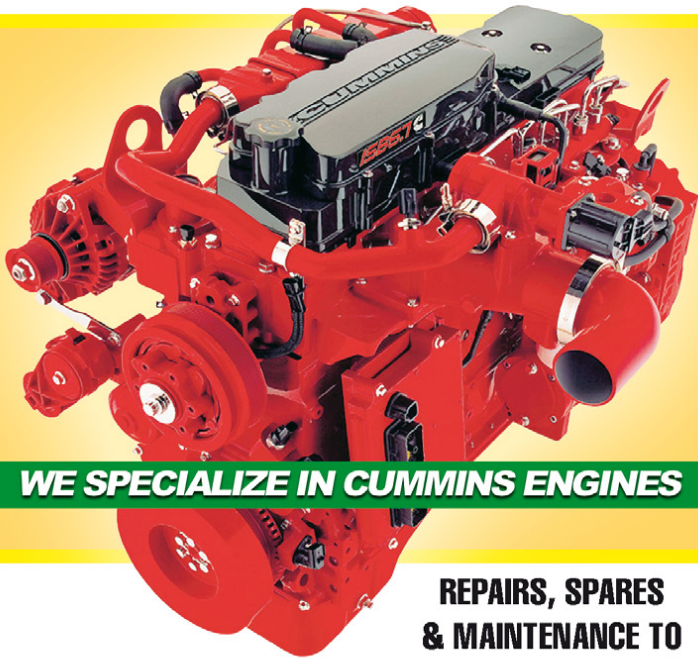
PLEASE CONTACT ON ON +27 72 545 6223 OR SEND MAIL
TO INFO@MAE-EQUIPMENT.COM

„Your Partner for new & used Machinery and Equipment.“

www.mae-equipment.com

Earthmoving Specialist

Old & New
Generation Experience



WE SPECIALIZE IN CUMMINS ENGINES

Full Diagnostic
Troubleshooting

**REPAIRS, SPARES
& MAINTENANCE TO
LEADING EARTHMOVING
MACHINERY**

Carlos Caroto: 079 519 6769 | Email: jennycaroto@live.co.za

Earthmoving Specialist



**OLD & NEW
GENERATION EXPERIENCE**



FULL DIAGNOSTIC TROUBLESHOOTING

**REPAIRS, SPARES & MAINTENANCE TO
LEADING EARTHMOVING MACHINERY**

**SPECIALISING IN: CAT ECPC, ICM COUNTERSHIFT
& POWERSHIFT TRANSMISSION REBUILDING**

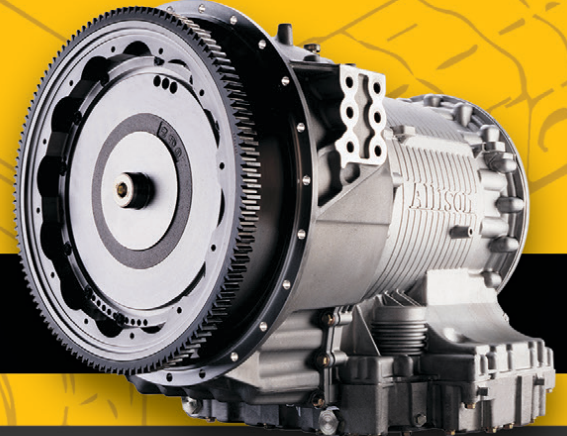
Carlos Caroto: 079 519 6769 | Email: jennycaroto@live.co.za



MZANTSI TRANSMISSIONS

6 Van der Bijl Street, Alrode South, Alberton

**We offer specialised transmission repairs
for heavy duty & on highway machines**



**WE OFFER SPECIALISED TRANSMISSION REPAIRS
FOR HEAVY DUTY & ON HIGHWAY MACHINES**

**BELL • TEREX • CAT • JOHN DEERE
HITACHI • DAEWOO • ZF • ALLISON • CLARK • FUNK**

We offer dyno testing on the following boxes:

**ZF - 4WG92, 4WG94, 4/6WG180/200/210/310
Allison - MD3560, HD4560**

**WE PURCHASE
2ND HAND TRANSMISSIONS**

**Bell B17B, B20B, B25B, 1206 & B40D
Transmissions in stock**

Email: info@gearboxes.me | Tel: 011 868 5130 | Fax: 086 634 7904 | Cell: 071 684 5784



AFFORDABLE  **RELIABLE**  **TRUSTED** 

WWW.DURASALES.CO.ZA



Visit our website on www.durasales.co.za for updated stock. T&C APPLY

JHB SHOWROOM
46 Viewpoint Road
Bartlett, Boksburg

CPT SHOWROOM
30 Klaat Street
Kraaifontein, WC

Contact our showrooms:

Gauteng: +27 (0) 10 823 5478
Western Cape: +27 (0) 21 212 0210

JHB SALES TEAM:

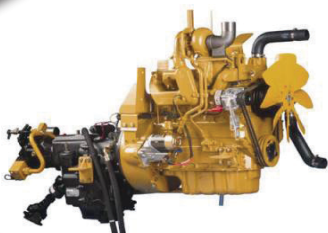
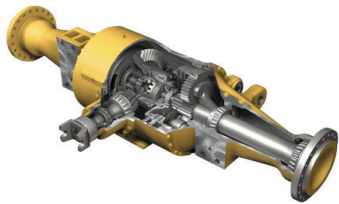
Curtis
Prinsloo
Coenie
Jerry

CPT SALES TEAM:

Pottie
Gerrie
Melaney



Visit our new website
www.duraparts.co.za





NEW
USED
REFURBISHED
WORK READY

DURA
PARTS

**VIEW ALL
OUR STOCK
AVAILABLE
ONLINE**

**POWERING
PERFORMANCE
ONE PART
AT A TIME.**

**THE EXPERTS
IN MACHINERY
COMPONENTS**

Office : +27 82 691 9524 • Adriaan : +27 71 234 6234 • Tiaan : +27 72 290 4136
Email : admin@duraparts.co.za • Address : 222 Lemmer Rd, Vulcania, Brakpan 1541
www.duraparts.co.za



DURA PARTS - THE EXPERTS IN MACHINERY COMPONENTS

ASSORTED TRACKS

NOW AVAILABLE FOR DOZERS & EXCAVATORS



CONTACT US WHILE STOCK LASTS!

VIEW ALL OUR STOCK AVAILABLE ONLINE

Adriaan : +27 71 234 6234 • Tiaan : +27 72 290 4136 • Office : +27 82 691 9524
Email : admin@duraparts.co.za • Address : 222 Lemmer Rd, Vulcania, Brakpan 1541
WWW.DURAPARTS.CO.ZA

Seats for safety and strength

The Seat Connection has been a regular and frequent supplier of mining seats for some 30 years.

We have a fully equipped workshop and professionally trained team to assemble new seats and repair or restore used seats.

Developed for strength, our THESCO Mining Seats with their compact EU approved suspensions are ideal for limited space environments and harsh conditions.



THESCO SEAT II



THESCO SEAT III



THESCO SEAT IV



The seat
CONNECTION



TheSeatConnection



+27 11 452 6802



info@seatconnection.co.za



www.seatconnection.co.za

MID PLANT SERVICES

NEW & RECONDITIONED HYDRAULIC EARTHMOVING EQUIPMENT, PARTS AND REPAIRS

THE ALTERNATIVE SUPPLIER FOR DOOSAN, HYUNDAI, VOLVO AND OTHER BRANDS OF EXCAVATOR PARTS AND COMPONENTS IN SOUTH AFRICA.



CONTACT DETAILS

TEL: +27(0)11 967 0055 | TEL: +27 (0)11 967 0060 | FAX: +27(0)86 606 4597 | SALES@MIDPLANT.COM

ADDRESS: 273 3RD AVENUE, BREDELL, KEMPTON PARK | WWW.MIDPLANT.COM

www.espa.co.za

ESP THE PROVEN ALTERNATIVE

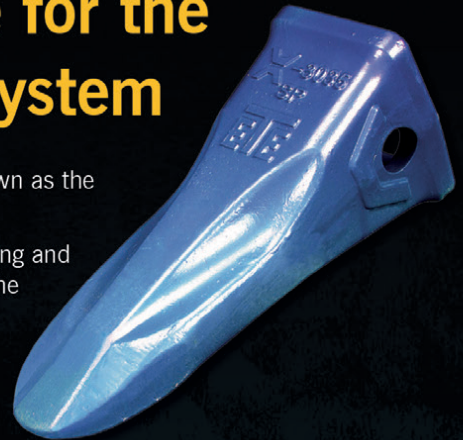


Bucket Teeth suitable for the Caterpillar Side Pin System

ETE offers a range of innovative bucket teeth designs known as the Xtrem Series.

The Xtrem Series bucket teeth offer excellent self sharpening and penetration features that are able to maximise the life of the teeth in all applications.

In addition, ETE also produces replica DRP (Direct Replacement Part) bucket teeth and adapters for the Caterpillar Side Pin System.



GD 
GENERAL SOIL CONDITIONS

Available Sizes
J200, J250,
J300, J350,
J400, J460,
J550, J600,
J700, J800



SP 
GENERAL & ABRASIVE CONDITIONS

Available Sizes
J200, J250,
J300, J350,
J400, J460,
J550, J600,
J700, J800



PL 
COMPACTED SOILS

Available Sizes
J350, J400,
J460, J550,
J600, J700



AH 
GENERAL & ABRASIVE CONDITIONS

Available Sizes
J300, J350,
J400, J460,
J550, J600,
J700, J800



RC 
EXTREME ABRASIVE CONDITIONS

Available Sizes
J200, J300,
J350, J460,
J550, J600,
J700, J800



Design • Performance • Durability

BENEFIT FROM OUR **9 MONTHS** WARRANTY PERIOD ON NEW PARTS

ESP Johannesburg
Tel: (011) 398-1700

ESP Benoni
Tel: (011) 845-2911

ESP Pretoria
Tel: (012) 804-6706

ESP Middelburg
Tel: (013) 246-2520

ESP Pinetown
Tel: (031) 705-4200

ESP Cape Town
Tel: (021) 945-1030

ESP Port Elizabeth
Tel: (041) 484-4575

ESP Bloemfontein
Tel: (051) 432-4501

ESP Kimberley
Tel: (053) 831-8349



ISO 9001 Certified

Manufacturers' names, numbers, symbols and descriptions are used for reference purposes only and it is not implied that any part listed is the product of the manufacturers.

www.espa.co.za

ESP THE PROVEN ALTERNATIVE



ESP OFFERS A COMPLETE RANGE OF GROUND ENGAGING TOOLS
FOR MOST MAKES OF EARTHMOVING EQUIPMENT.



These include the following parts:

- Forged and cast bucket tips
- Forged and cast bucket adapters
- Grader blades
- Cutting edges and end bits
- Half-arrow edges
- Ripper tips and shanks
- Plow bolts and nuts

ESP WILL REPLACE ALL G.E.T. FREE OF CHARGE, SHOULD
BREAKAGE OCCUR DURING NORMAL OPERATION.

BENEFIT FROM OUR 9 MONTHS WARRANTY PERIOD ON NEW PARTS

ESP Johannesburg
Tel: (011) 398-1700

ESP Benoni
Tel: (011) 845-2911

ESP Pretoria
Tel: (012) 804-6706

ESP Middelburg
Tel: (013) 246-2520

ESP Pinetown
Tel: (031) 705-4200

ESP Cape Town
Tel: (021) 945-1030

ESP Port Elizabeth
Tel: (041) 484-4575

ESP Bloemfontein
Tel: (051) 432-4501

ESP Kimberley
Tel: (053) 831-8349



ISO 9001 Certified

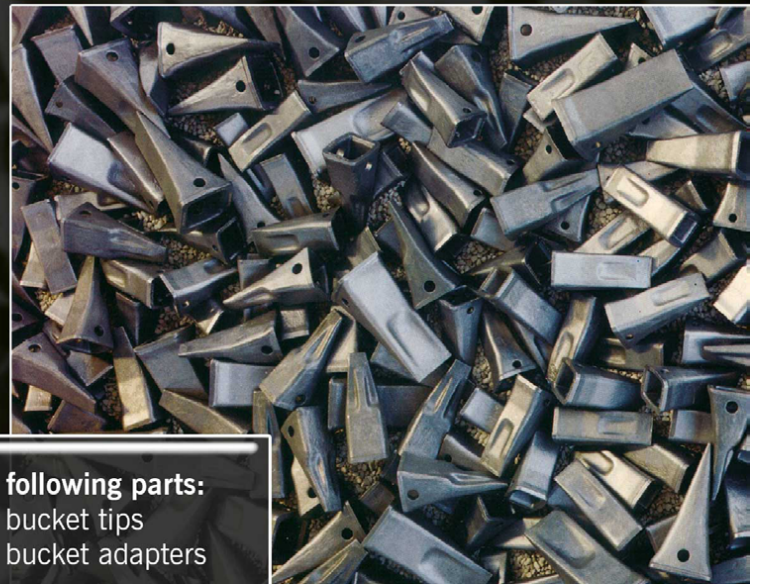
Manufacturers' names, numbers, symbols and descriptions are used for reference purposes only and it is not implied that any part listed is the product of the manufacturers.

www.espa.co.za

ESP THE PROVEN ALTERNATIVE

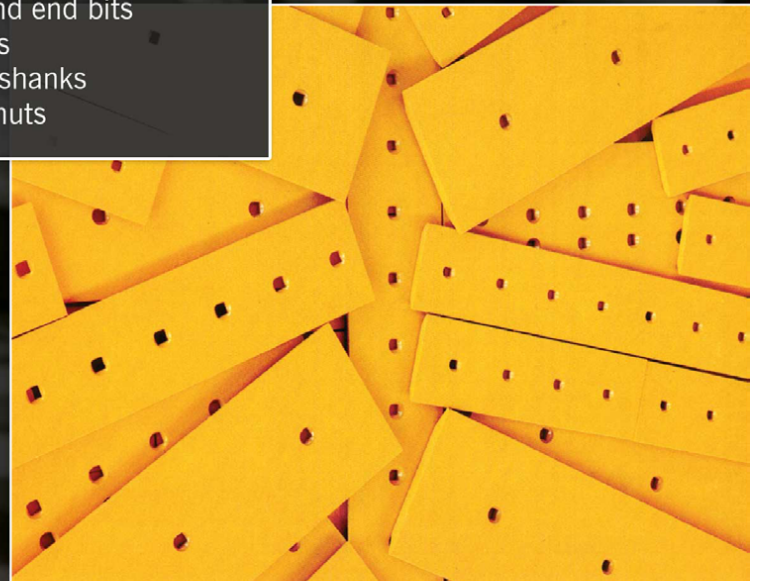
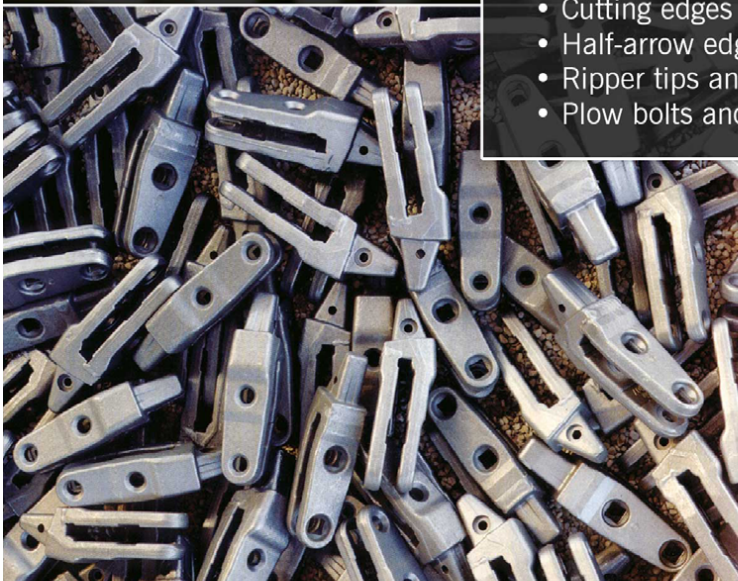


GROUND ENGAGING TOOLS FOR EARTHMOVING EQUIPMENT



These include the following parts:

- Forged and cast bucket tips
- Forged and cast bucket adapters
- Grader blades
- Cutting edges and end bits
- Half-arrow edges
- Ripper tips and shanks
- Plow bolts and nuts



BENEFIT FROM OUR 9 MONTHS WARRANTY PERIOD ON NEW PARTS

ESP Johannesburg
Tel: (011) 398-1700

ESP Benoni
Tel: (011) 845-2911

ESP Pretoria
Tel: (012) 804-6706

ESP Middelburg
Tel: (013) 246-2520

ESP Pinetown
Tel: (031) 705-4200

ESP Cape Town
Tel: (021) 945-1030

ESP Port Elizabeth
Tel: (041) 484-4575

ESP Bloemfontein
Tel: (051) 432-4501

ESP Kimberley
Tel: (053) 831-8349



ISO 9001 Certified

Manufacturers' names, numbers, symbols and descriptions are used for reference purposes only and it is not implied that any part listed is the product of the manufacturers.

www.espa.co.za



ESP THE PROVEN ALTERNATIVE

TGW

ESP offers a wide range of TGW brand blades manufactured from several grades of high carbon and boron steel that are heat-treated and hardened to improve the lifespan and to meet the industrial requirements of earthmoving application.



BENEFIT FROM OUR 9 MONTHS WARRANTY PERIOD ON NEW PARTS

ESP Johannesburg
Tel: (011) 398-1700

ESP Benoni
Tel: (011) 845-2911

ESP Pretoria
Tel: (012) 804-6706

ESP Middelburg
Tel: (013) 246-2520

ESP Pinetown
Tel: (031) 705-4200

ESP Cape Town
Tel: (021) 945-1030

ESP Port Elizabeth
Tel: (041) 484-4575

ESP Bloemfontein
Tel: (051) 432-4501

ESP Kimberley
Tel: (053) 831-8349



ISO 9001 Certified

Manufacturers' names, numbers, symbols and descriptions are used for reference purposes only and it is not implied that any part listed is the product of the manufacturers.




**ONE STOP
PROCUREMENT**

• Seals • Bearings • Hydraulic Components


504 Pretoria Road, Fairleads, Benoni 1501

TEL: 011 1003/1865


WE PROVIDE OUR CUSTOMERS WITH THE BEST SERVICE, WITH TEN YEARS EXPERIENCE IN THE INDUSTRY




-SEALS-




-BEARINGS-




-TOOLS &
INDUSTRIAL
SUPPLIES-



-CHROMESTOCK-



-Hydraulics-



-Plastic Engineering-

-BRANDS WE CATER FOR-





**ONE STOP
PROCUREMENT
MIDDELBURG**

• Seals • Bearings • Hydraulic Components



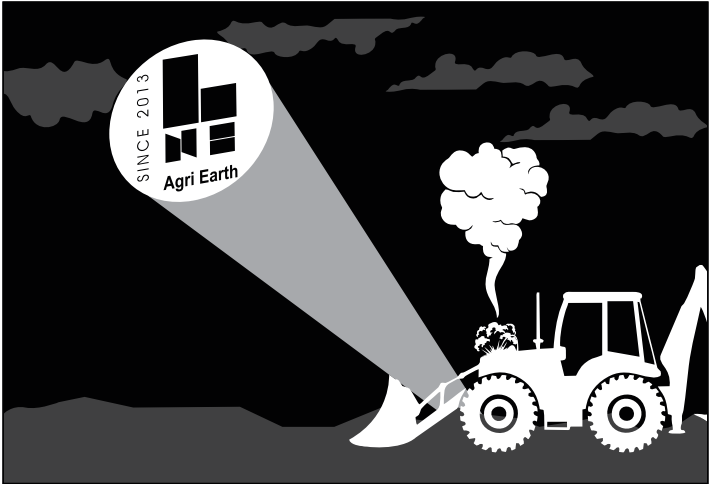
**ONE STOP
PROCUREMENT
DURBAN**

• Seals • Bearings • Hydraulic Components



**ONE STOP
PROCUREMENT
ZAMBIA LTD**

• Seals • Bearings • Hydraulic Components



SINCE 2013



+27 (0)861 888 008

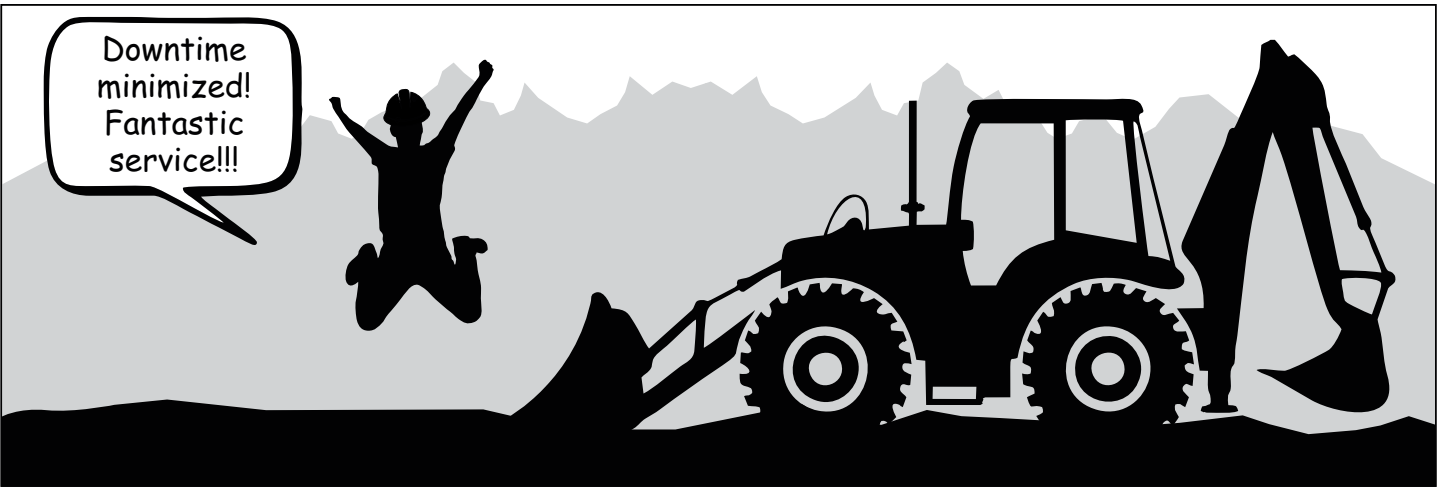
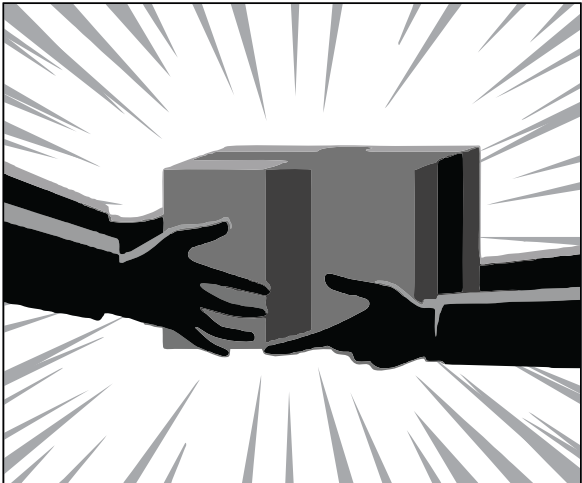
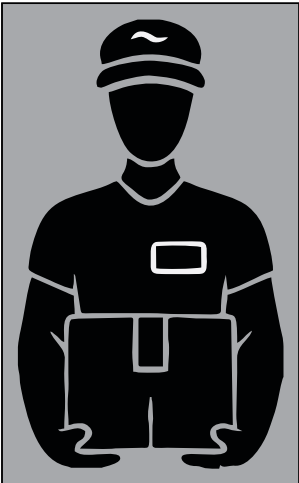
+27 (0)83 327 3237 (A/H)

LNE@LNE-AgriEarth.com

www.LNE-AgriEarth.com

 **CARRARO**

Spare Parts Authorized Dealer





LIUGONG 4215D “TOP GRADE” GRADER WITH AWARD WINNING DESIGN

In 2019, LiuGong’s UK design team were recognised with a prestigious Red Dot Award for LiuGong’s new D series of Graders with 4180D. Since 2020 LiuGong Graders in this range has its first appearance in South Africa and today bigger size 4215D Grader has gained most popularity with many features both for road construction and road maintenance in the mining industry.

LiuGong’s 4215D Motor Grader’s innovation and excellence in product design gives a unique feature that takes every angle of the operator’s perspective into account. It comes forward with a 324°panoramic view, with a distinctive 5 post cab having a single C-pillar. A completely new cab interior which sets the benchmark for comfort and efficiency. Additionally, a fully pressurized cab offers low vibration, low noise environment combined with a fully adjustable suspension seat, ergonomic controls and sophisticated temperature control giving you the perfect environment in operation.

EXCEPTIONAL MOBILITY AND PERFORMANCE

Whatever the conditions of the terrain, 4215D moves with ease. Our maintenance-free Meritor limited slip differential axle transfers all the torque to the tyres, improving traction and grading capability. The ZF 6-speed powershift transmission gives the operator a simple, precise and light gear changing capability allowing him to fully concentrate on doing the very best job in the fastest possible time. Fully equipped with heavy duty rolling chains (140% stronger than the average) our transmission promises to keep on working harder for longer. Powered by a super-efficient Cumming Tier 2 engine the 4215D delivers precise and sensitive power control with maximum fuel economy. Engine performance and fuel economy are further improved thanks to the Kleanaire air pre-cleaner which neutralizes the effects of the toughest, dustiest conditions to boost engine performance, fuel economy and uptime.

PATENTED SWING SYSTEM

To further enable a precision cut, our new 4215D is equipped with our patented swing system. Here the pitch cylinders are cleverly positioned to allow the blade to cut directly into the ground at a depth of 60-270mm, with greater stability and control. The patented swing system allows the blade to be lifted higher, achieving a ground clearance of 600mm, making it safer and easier to transport the grader or move it over rough ground. Burgers Equipment & Spares, dealer for LiuGong Machinery in South-Africa is incredibly pleased with the market performance of 4215D Grader. With the increasing reputation on the quality of the product and Burgers’ excellence in parts availability and technical support and service ability, Burgers and LiuGong proudly present the construction world with a grader designed to exceed customers’ expectations where Burgers, LiuGong partnership together with their customers underline their tagline as “Together We Define Tomorrow”



**TOGETHER WE
DEFINE TOMORROW**



Johannesburg Head Office

Tel: +27 11 979 3636

Email: salesadmin@liugong.co.za

www.liugong.co.za

TOUGH WORLD. TOUGH EQUIPMENT.



YOUR **FIRST CHOICE**

CONTACT US
T: +27 10 001 9200
T: +27 11 392 7533



WWW.TAGS.CO.ZA

CTP EARTHMOVING EQUIPMENT SPARES AVAILABLE IN GAUTENG

When it comes to product quality, we ensure that each and every item sold is in an exceptional condition. We also make sure that our products are SABS approved and manufactured from only the highest quality materials available on the market. Our team is dedicated to quality and while we strive for competitive rates, quality is never compromised on. You will find that when comparing products and rates with other suppliers on the market, our range can exceed expectations and will simply not let you down.

When looking for a range of top-quality earth moving equipment spares, we encourage you to get in touch with us. Take the time to send us an email or phone us, in order to discuss your needs and requirements. Our knowledgeable and friendly team will ensure that you are provided with access to a range of the best quality parts on the market. We will also provide you with a wealth of product related information and advice that will assist you to make an educated decision, regarding your heavy duty machinery.

INFO@TAGS.CO.ZA

INFO@TAGS.CO.ZA



EARTHMOVING EQUIPMENT SPARES

OUR COMPANY HAS A PHENOMENAL REPUTATION ON THE MARKET

Tractor & Grader Supplies, which was founded in 1994 in Gauteng, has certainly expanded over the years. In fact, the company has grown in great leaps and bounds.

The company's dedication to presenting durable and reliable products to the market has earned us a great reputation within the industry.

Our aim has been to become one of the biggest suppliers of aftermarket earth moving parts and spares, and with hard work and dedication, we have achieved that particular goal.

The team at Tractor & Grader Supplies is one that is dedicated, professional and experienced in the industry.

When it comes to ensuring that your earth moving equipment is running at its best, you will need to ensure that you are making use of a variety of ground engaging tools.

Some of the items that you can acquire for these machines include ripper shanks, side cutters, segments, adaptors, end bits, dozer blades, blades, pins and retainers, self-sharpening teeth and so on.

Our tools are able to offer outstanding performance, as a result of their strategic designs and of course, excellent quality.

These tools are effectively used within the mining, trenching, construction and related industries.

We encourage our clients to let us know if there is something specific that they are looking for, so that we can provide advice and information on the best parts and spares for the job.



WWW.TAGS.CO.ZA

VENDEL EQUIPMENT SALES (PTY) LTD

T/A | ASSOCIATED EQUIPMENT

TEL: (011) 801-4911/2/3 Website: www.associatedequipment.co.za Plot 92 Indaba Lane- off Beyers Naude Road
 FAX: (011) 801-4914 Rietfontein (Roodepoort), GAUTENG
 E-mail: vendels@mweb.co.za E-Mail: associatedloraine@xnet.co.za

Contact: ANTON - Cell: 082 923 5397 / JAAP - Cell: 082 892 1327 / OFFICE - Cell: 083 626 5588

LORAIN-CELL: 076 021 4344

GPS Co-ordinates - S26°3'53.343 - E27°52'37.453



1 x 2010 Caterpillar D6T Dozer
with Ripper Rebuild engine
New undercarriage



2 x Cat 140H Motor Graders
with Rippers



1 x Komatsu GD650 Motor Grader
with ripper



3 x Caterpillar 140G Motor Graders
with Rippers



1 X Cheng Gong MG1320B
with Ripper



2 x 2021 New / Unused
Cat 320D3 Excavator's
1 x 2014 Caterpillar 320D Excavator



3 x 2021New / Unused
Cat 323D3 Excavator's



2 x 2010 - 2011 Caterpillar
336D Excavator's



1 x Hitachi ZX210W-
Wheel Excavator 2015



1 x 2016 Doosan DX62R-3
Excavator Piped for Hammer



1 x 2013 Wacker 50Z3
Excavator



1 x Hamm HD120
Smooth Drum Roller



2 x 2013 Cat 950H
F.E.L'S



2 x 2011 Bell 1806E
F.E.L



1 x 2014 JCB 456
Front end Loader



2 x 2014 Sem 668C
Front end Loader's

 Standard Bank  WesBank

 ABSA

 NEDBANK



VENDEL EQUIPMENT SALES (PTY) LTD

T/A | ASSOCIATED EQUIPMENT

TEL: (011) 801-4911/2/3 Website: www.associatedequipment.co.za Plot 92 Indaba Lane- off Beyers Naude Road
 FAX: (011) 801-4914 Rietfontein (Roodepoort), GAUTENG
 E-mail: vendels@mweb.co.za E-Mail: associatedloraine@xnet.co.za

Contact: ANTON - Cell: 082 923 5397 / JAAP - Cell: 082 892 1327 / OFFICE - Cell: 083 626 5588

LORAIN-CELL: 076 021 4344

GPS Co-ordinates - S26°3'53.343 - E27°52'37.453



2 x 2014,2016 Hamm 3520
Smooth Drum Rollers



2 x 2018 Hamm 3411 SDR'S
1 x 2008 Hamm HD120 DDV
Drum Roller



1 x 2014 Bomag BW212D-40 SD Roller
1 x Bomag BW212-40 SD Roller



1 x 2013 Hamm 3411 Padfoot Roller
1 x Bomag BW212 Smooth Drum Roller



1 x Dynapac CS142N
3 Point Steel drum Roller - 13 Ton



2 x Hamm GRW18 PTR
1 x Hamm GRW15 PTR
1 x Ingersoll-Rand 27Ton PTR



1 x Caterpillar PF300C 7 Wheel PTR
1 x 2006 Bomag BW120AD-4 DDVR



2 x Etnyre K Chip Spreaders
Mechanical
1 x TLB Hydraulic hammer



1 x Scania P380
Water Tanker



2 x Caterpillar 725 Water Cart's
23 000 Liters



2 x 2016 F. A. W 10M³ Truck's
1 x TATA 813 EX2 Side Tipper Truck



1 x 2018 Kamaz 65222 6x6 15M³ Tipper
1 x 2004 Terex TA30 6x6 Dumptruck



17.5x25 Rock Grip L4, 17.5x25 L3,
12.5x80x18, 1400x24L3, 16.9x28
All New Tyres



1 x 3 Axle Hendred Goosneck trailer
2 x Ford Mobilift
1 x Gallion 10 Ton Crane
1 x 5 Sided impact roller



3 x 2021 New / Unused
Case 851EX 4x4 Magnum TLB's
2 x 2017 Case 570T 4x4 TLB's
1 x 2018 JCB 3CX 4x4 TLB



1 x 2015 JCB 535-140 Telehandler
1x 2016 JCB 540-140 Telehandler
1 x 2014 JCB535-125 Telehandler



Hamm3411 Rollers Stripping
7 x Excavator - Loader Buckets
Caterpillar 140G Spares



1 x Komatsu 155 Dozer
with Ripper R1 050 000.00 Excluding vat
SELLING ON BEHALF OF
FINANCIAL INSTITUTION



1 x Cat D10R Dozer with Ripper
R1 200 000.00 Excluding vat
SELLING ON BEHALF OF
FINANCIAL INSTITUTION



1 X Doosan 420LC-V Excavator
R700 000.00 Excluding vat .
SELLING ON BEHALF OF
FINANCIAL INSTITUTION

GPS CO-ORDIANATES: S26°3'56.343 - E37°52'37.453

www.associatedequipment.co.za / www.vendelequipmentsales.co.za



AFRICA'S LEADING EARTHMOVING EQUIPMENT & PARTS DEALER

www.blcplant.com ☎ +27 11 555 2000 ✉ info@blcplant.com

PLANT

PARTS

RENTAL



**OVER 600
MACHINES
IN STOCK**



HYDRAULIC EXCAVATORS

CAT 320D, 325D, 329D, 330D, 336D, 345D,
349D, 365C, 374D/F, 385C, 390D/F



DOZERS

CAT D6R, D6T, D7R, D8R, D9R/T, D10T, D11T



RIGID DUMP TRUCKS

25 X CAT 777D, 5 X 777F



MOTOR GRADERS

CAT 140G, 140H, 140K, 14H, 16G, 120H, 14M,
16H, 16M



ARTICULATED TRUCKS

BELL B40D, B35D



ARTICULATED TRUCKS

CAT 725, 730, 740, 740B, 745C



CAT EXCAVATOR

323D- 2017



ARTICULATED WATER TANKERS

CAT 725, 730, 735, 740B, 773F, 777D
BELL B40D, B20D



FRONT END LOADER

CAT 992 K



TRACTOR LOADER BACKHOES

CAT 428F, 428F2, 426F, 450E



COMPACTION ROLLERS

BOMAG BW212-3, BW213D, BW219-3
CAT CS533, CP 533E, CS563E, CS76



FRONT END LOADERS

CAT 950H, 950GC, 966H, 962H, 972H,
980H, 988G, 992K

**LARGEST STOCK OF
PARTS IN THE
SOUTHERN HEMISPHERE**

Service exchange units available.

6 MONTHS WARRANTY
on refurbished components.

View all our available
stock on our website
www.blcplant.com



BLC Plant purchases earthmoving equipment for stock, rebuilds it as required in the fully equipped on-site workshops and then sells it to users in various industries. We focus on delivering products which meet customer specifications, offer buyers a viable alternative to new equipment and provide excellent after sales service and support.

PLANT

**View all our available
stock on our website
www.blcplant.co.za**

PLANT - STOCK READY TO GO



CAT D11T
2011



CAT 966H
2013



TADANO
TR250M-4 CRANE



TADANO
TR250-5 CRANE



CAT MOTOR GRADER
120H



INGERSOLL-RAND ROLLERPACK
27T



BOMAG BW212 PAD FOOT ROLLER
2013



MAHINDRA VX90 4X4
2021

TRUCKS - STOCK READY TO GO



MERCEDES AXOR 2628 14000L WATER TANKER
(2008)



MERC-BENZ ACTROS 3331 ROCK BIN
(2008) X 3



VOLVO 18000L WATER TANKER
(2012) 5 AVAILABLE



MERCEDES ACTROS 3331 TIPPER TRUCK
(2007)

Call us now

+27 (0)11 555 2000

or visit

www.blcplant.com

for our latest stock.



Largest stock of parts in the southern hemisphere. Service exchange units available.

www.blcplant.com

+27 11 555 2000

info@blcplant.com

Corner Wynberg Road and 2nd Avenue, Kew

PARTS



**WE STRIPPED OVER
3000 CAT MACHINES
FOR PARTS**



PARTS WORKSHOP



WE ONLY USE GENUINE PARTS

6 MONTHS WARRANTY on refurbished components



CATERPILLAR
Dozer Engines



CATERPILLAR
Dozer Final Drives



CATERPILLAR
Grader Transmissions



CATERPILLAR
Loader Axles



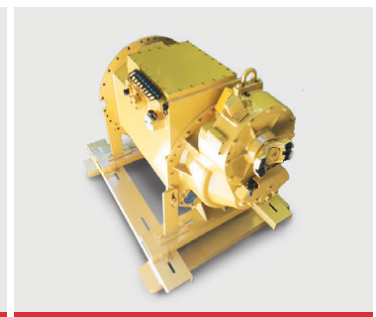
CATERPILLAR
Loader Transmissions



CATERPILLAR
Grader Axles



CATERPILLAR
Transfer Box



CATERPILLAR
Off Highway Transmissions

Call us now **+27 (0)11 555 2000** or visit www.blcplant.com for our latest stock.



**SALES & RENTALS OF
EXCAVATORS & TLB'S
WITH ATTACHMENTS.**



HEAD OFFICE
074 922 2382

RENTALS
082 887 8636

SALES
071 670 8707

BREAKING FOR SPARES

- CAT 330D
- CAT 320D
- KOMATSU PC400

MACHINES FOR SALE

- CAT 307 PIPED
- CAT 312 PIPED
- CAT 931 TRUCK LOADER
- CAT 320D & 330D PIPED
- JCB JS200 & JS205 PIPED
- VARIOUS SIZE EXCAVATOR

ENGINES FOR SALE

- CAT 3306
- CAT 3052
- CAT 3064
- CAT C7
- KOMATSU 60125 (375-5)
- ISUZU 6HK1 (HITACHI)

FOR ONSITE AIRCON REPAIRS

CONTACT DAVE: 083 600 3308

sales@rhinohammers.co.za | hire@phplant.co.za | cjago@global.co.za

www.rhinohammers.co.za | www.phplant.co.za



S. MICHELL,
THE PLANT FINDER CC
The **RIGHT EQUIPMENT** at the **RIGHT PRICE**

USED PLANT AVAILABLE



1X USED CATERPILLAR 428F2 (4X4) BACKHOE LOADER



GENERAL:

THE MACHINE IS FITTED WITH A 4 IN 1 CLAM-SHELL TYPE LOADER BUCKET WITH FOLD OVER FORK KIT.
FULLY ENCLOSED AIR CONDITIONED CAB.
NEW TYRES WILL BE FITTED TO THE FRONT WHEELS.
A MAJOR SERVICE I.E. ALL OILS/FLUIDS AND FILTERS, WILL BE CARRIED OUT IN PREPARATION FOR RESALE.
STATIC CUTTING EDGE TO BE REPLACED ON LOADER BUCKET AS WELL AS A NEW BOLT ON CUTTING EDGE OR TEETH/TIPS TO BE FITTED ON LEADING EDGE.
MACHINE TO BE REPAINTED TO ORIGINAL SPEC AND NEW DECAL KIT FITTED.

S/NO: LYG02005
YEAR: 2017
SMR: 6250 HOURS

SHAWN MICHELL - 082 568 4033

Tel: 041-379 1717 / Fax: 041-379 4753

shawn@plantfinder.co.za



Follow & Like us on Facebook
facebook.com/ThePlantFinder

WWW.PLANTFINDER.CO.ZA



S. MICHELL,

THE PLANT FINDER CC

The RIGHT EQUIPMENT at the RIGHT PRICE

USED PLANT AVAILABLE



1X USED VOLVO EC240BLC PRIME TRACKED EXCAVATOR



GENERAL:

THIS MACHINE HAS BEEN WELL MAINTAINED, SERVICED AT REGULAR INTERVALS.
NEW LINK ASSEMBLIES & SPROCKETS FITTED, BALANCE OF U/C AS WELL AS TRACK-FRAMES ARE WELL SERVICEABLE & NEAT.
ELECTRICAL, ALL OK, NO FAULT CODES.
MAIN HYDRAULIC PUMP AND CYLINDERS ARE DRY.
RHS REAR INSPECTION DOOR HAS SUPERFICIAL DAMAGE.
THE MACHINE IS READY TO WORK.

S/NO: 15881
YEAR: 2013
SMR: 6610 HOURS

SHAWN MICHELL - 082 568 4033

Tel: 041-379 1717 / Fax: 041-379 4753

shawn@plantfinder.co.za



Follow & Like us on Facebook
facebook.com/ThePlantFinder

WWW.PLANTFINDER.CO.ZA



All Africa Supplies

GLOBAL REACH - LOCAL SUPPLY

www.allafricasupplies.net

011 918 9976

Enquiries: sales@allafricasupplies.net

228 All Black Road Anderbolt Boksburg

BELL



CARRARO

HITACHI

VOLVO

Construction Equipment

DOOSAN



CAT



HYUNDAI
HEAVY INDUSTRIES CO.,LTD.

Mobil

ISUZU

KOMATSU

*All manufacturers names, numbers, symbols and pictures are for reference only. It does not imply that any of the parts are the product of these manufacturers.



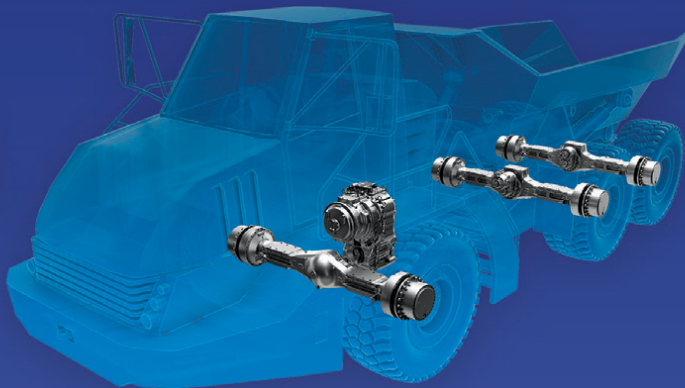
**AUTHORIZED
PARTS DISTRIBUTOR**

**A great journey starts
with ZF**

**Innovative solutions. OE quality parts.
German technologie.**



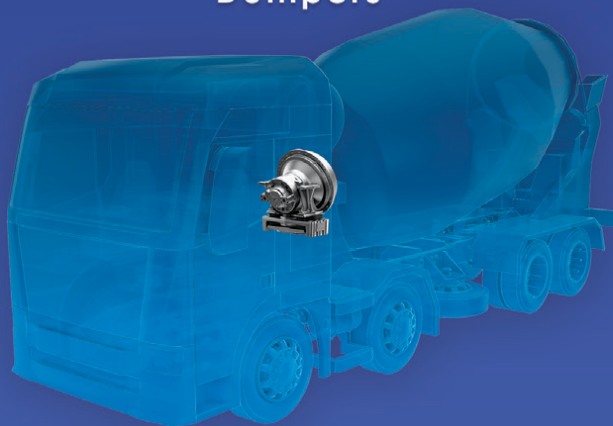
Wheel Loaders



Dumpers



Backhoe Loaders



Concrete Mixers

JCB



All Africa Supplies

GLOBAL REACH - LOCAL SUPPLY

www.allafricasupplies.net

011 918 9976

Enquiries: sales@allafricasupplies.net

228 All Black Road Anderbolt Boksburg

BELL



CARRARO

HITACHI

VOLVO

Construction Equipment

DOOSAN



CAT



HYUNDAI
HEAVY INDUSTRIES CO.,LTD.

Mobil

ISUZU

KOMATSU

*All manufacturers names, numbers, symbols and pictures are for reference only. It does not imply that any of the parts are the product of these manufacturers.

Parts & Components



Engine Rebuilds



Hydraulic Centre



www.allafricasupplies.net

Follow us on Social Media



Facebook / All Africa Supplies



Google+



Instagram / @allafricasupplies

**DO YOU WANT A JCB PARTS SUPPLIER
WITHOUT ALL THE BELLS AND WHISTLES?**

CALL CTC PLANT COMPANY

Roy Heather: +27 61 421 9184 | jcbparts@ctcplant.co.za



Pictures used for advertising & referencing purposes only

**CTC PLANT COMPANY
YOUR GENUINE ALTERNATIVE
JCB PARTS SUPPLIER**



C.T.C. PLANT COMPANY
SINCE 1992

**FOR SUPERIOR QUALITY PARTS
ON ALL MAJOR BRANDS**

Cnr. Michigan & Manchester
Streets, Airport Industria,
Cape Town, South Africa

Roy Heather: +27 61 421 9184
www.ctcplant.com





MACHINES FOR SALE



2013 - LIEBHERR 538 LOADER
(automatic greasing system
and L5 tyres)
R400 000 + VAT



**2007
MERCEDES BENZ AXOR 2628**
(10m³ - Tipper)
R450 000 + VAT



1985 - MERCEDES BENZ 2629
(10m³ - Tipper)
R250 000 + VAT



**2 X 2004
VOLVO A25D 6X6 DUMPER TRUCKS**
(Fitted with greedy boards & Tailgate)
R550 000 + VAT



2006 - ISUZU F - SERIES
(10M³ - Tipper)
R350 000 + VAT



2005 - ISUZU F - SERIES
(10M³ - Tipper)
R350 000 + VAT



1993 - MERCEDES BENZ 1414
(5M³ Tipper)
R185 000 + VAT



**1984
AVALING BARTFORD GRADER**
R250 000 + VAT



1997 - ISUZU FTR800
(5m³ - Tipper)
R 185 000 + VAT



Francois Gerber

082 454 0934 | charlesjnr@transand.net | 044 695 0105





Sole importer of the SAILUN OTR & Giant OTR Range



HARD WORKING TYRES DESIGNED FOR RIGIDS, DUMP TRUCKS (ADT), LOADERS AND CRANES

SUPERIOR PERFORMANCE LOWEST COST-PER-HOUR



Contact us now and enquire about our SAILUN OTR tyre range

Tewus Wessels, OTR Sales Manager | Tel. +27 (0) 83 639 2290 | tewus@safetygrip.co.za | www.safetygrip.co.za



VORTEX

TRANSMISSIONS

Tel: 011 452-4430/1
 Parts: 011 452 3296 / 452 3390
 Johan: 082 333 1005
 Jan: 082 333 1004
 Fax: 011 609 5302
 Email: vortex3@mweb.co.za



Allison Fuller • Clark • Caterpillar • Funk Twin Disk



SERVICE UNITS:

- AT 545 bell (spec)
- MT 643 bell (spec)
- MD 3560 P TID 2
- MD 3560 P TID 3
- MD 3060 TID 3
- 4500 ORS GEN 4
- 4500 ORS R GEN 4 LIFE FILTER Bell B40D
- 4500 ORS R GEN 4 Bell B50E
- Terex engine PTO 'S TR 60
- Euclid and Terex transmission PTO'S
- Euclid 6610A CEC2
- Terex 6610AR CEC 2
- Euclid 6620A

UNITS THAT WE ALSO DO:

- Bell grader transmissions
- Cat transmissions
- Funk transmissions
- Terex & Euclid Differential center portions
- Bell differential center portion
- Chelsea PTO'S
- Terex engine PTO'S TR100

**Repairs to all
 OFF & ON Highway
 Transmissions,
 Torque Convertors,
 Gearboxes, Differentials
 & Power Take Off's**

Vortex Transmissions sell genuine Allison parts for all our transmissions
 Dvno testing is done in house and all transmissions that are tested have test reports.





Inala Mining Services (Pty) Ltd

Hennie Nelson
South Africa, Witbank
+27 82 414 1393
sales@inmine.co.za



VARIETY OF
CATERPILLAR & HITACHI ENGINES



CAT 16H GRADER ENGINE
RUNNER



CATERPILLAR 777 / 785
D11 TORQUE CONVERTERS



CAT 785 RECONDITIONED
& USED FINAL DRIVE



RECONDITIONED
CAT 773 DIFF

WWW.INMIME.COM

Plot 26 Naauwpoort, Benicon Park, Witbank 1036
Mpumalanga, South Africa

CAT 773F Stripping for parts



Available parts:

2 x Final drives	All suspension cylinders
1 x Diff	1 x Radiator pack
1 x Transmission	

CAT 773F Bowl



Stripping 2 x Cat 992G



**PLEASE ENQUIRE FOR
INFORMATION ON
AVAILABLE PARTS**

CAT 789C Used Engine



SET / RECONDITIONED CAT 6030 FACE SHOVEL CYLINDERS



**RH120 / RH200
& RH340 Sprockets**



**2 x Boom Lift Cylinders / 2 x Stick Cylinders
2 x Bucket Tilt Cylinders**



**RH120E Reconditioned
Cylinders**



**INMINE have a full operational workshop, that does all work inhouse
from Idler rebuilds to Grouser shoe restripping.**

PARAMOUNT EQUIPMENT

We are level 1 B-BBEE company with a National Footprint and SADC reach

We are a diversified company with extended offerings in the Manufacture and Supply of Machines for the mining and related industry.

We have been trading since 2013. We offer Professional Engineering Services to industry. We strive for innovation and utilize the best material available in the market and offer the best fit solutions for our customers. Understanding our customer requirements is important. We source and provide them with best engineering solutions that are suitable for their operations. Paramount has recently partnered with the manufacturer, Revathi Equipment Limited (REL), an India based company to service the African continent. Paramount Equipment is the Authorized REL Dealer and Distributor

INTRODUCING:



**AUTONOMOUS
MINING THE
WAY FORWARD**



REL (India) designs and builds a varied range of blast hole drills for the mining and construction industry, incepted in the year 1977 as Revathi CP Equipment limited the Indian Unit of Chicago Pneumatics USA. Since its inception REL has manufactured more than 2000 drills of different capacities, delivering quality holes drilled safely and accurately at the lowest cost.

Our commitment to continuous improvement and innovation drives our ongoing and growing African presence. Please feel free to contact us for more information about our industry-leading products and services.

Your Partner in Mining Equipment Solutions

Gauteng
32 Van Buuren Road
Hans Merensky Office Park
Bedfordview, JHB
Tel: 010 007 3258

Mpumalanga
2 Watt Street
Industrial Area
Middelburg
Tel: 010 007 3109

Northern Cape
Rietbok Street, Office 5
NS&R Building, Kathu
Tel: 082 902 6376 /
072 849 6970

Botswana
Plot 454
Jwaneng
Tel: 00 27 10 007 3258 /
+267 71 968 840



Contact us today on sales@paramounttracks.com or visit us online at www.paramounttracks.com

Proud partner of:





Paramount Tracks

Bedfordview
Head Office
32 Van Buuren Rd
Hans Merensky Office Park
Tel: 010 007 3258

Middelburg
2 Watt Street • Industrial Area
Middelburg
Mpumalanga
Tel: 010 007 3109

Northern Cape
Rietbok Street • Office 5
NS&K Building • Kathu
Tel: 082 902 6376
Tel: 072 849 6970

Botswana (Pty) Ltd
Plot 454
Jwaneng
Tel: 00 27 10 007 3258
Tel: +267 71 968 840

Postal Address: South Africa
P.O.Box 11735 • Aerorand
1070 • South Africa

Postal Address: Botswana
P.O.Box 2233 • Jwaneng
Botswana



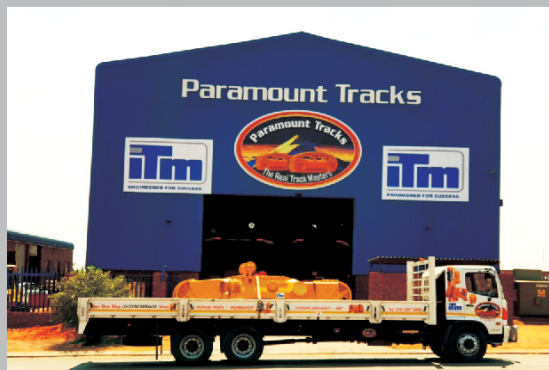
Email: sales@paramounttracks.com
Website: www.paramounttracks.com

Paramount Tracks is a diversified trading company that provides professional engineering services to the mining, plant and construction industries. We are a 100% black owned company and have presence in Johannesburg, Middelburg, Limpopo, Northern Cape and Botswana. We offer specialised services pertaining to the supply of all types of earthmoving undercarriage, GET, along with offering a repair solution for all bucket repairs, bowels, blade repairs, track frames etc.

We have the infrastructure to service large mining and construction companies. We supply a vast range of undercarriage that is suitable for all types of drill rigs and crawler equipment, along with wear parts that are suitable for most GET applications. We own a Track Workshop and Engineering Facility in Middelburg, Mpumalanga region & have developed strong relationships with the European undercarriage manufacturer ITM which is located in Italy. We currently service high end corporate clients in South Africa and have been appointed as the official ITM distributor for South Africa and Botswana through our Paramount Tracks Botswana entity. Paramount Tracks has been recognised as the official dealer of the Combi Wear Parts Ground Engaging Tools Range for South Africa who specialises in the manufacturing of this Swedish wear parts range and aims to offer our customers a premium product. We are the appointed Hardox Wearparts Centre in Middelburg, who is a member of SSAB and offer the following services:

- Cutting • Welding • Machining • Bending • Post-treatment • Perforation etc.

We aim to provide high productivity, along with low maintenance costs which is the core business for a Hardox Wearparts Centre.



THE OEM ALTERNATIVE

Our Vision

To be a regionally recognised professional engineering and technical services company dedicated to providing value added services to customers, from an engineering and supply of new undercarriage components perspective.. Paramount Tracks values are built on dedication, quality workmanship and excellent customer services that are based on sound engineering principles along with maintaining a safe and healthy working environment.

Our Mission

We undertake to uphold the following principles:
Quality parts and services
Develop and empower the community we operate within
To work to the highest quality standards possible
Shrive for continuous improvement

www.paramounttracks.com

GOOD USED EARTHMOVING PARTS AND EQUIPMENT



MINING EQUIPMENT PTY(LTD)

Tel: (011)894-6192 / (011)894-3377
Fax: (011)894 7914
barney@stmmining.co.za
donovan@stmmining.co.za

Office Hrs: Mon-Fri 07h00-17h00



GOOD RUNNING ZAXIS 200
UNDER 6 000 HRS



275-5
NO TRANSMISSION STRIPPING



D375-6 MACHINE
STRIPPING



928G
GOOD RUNNING MACHINE



GOOD RUNNING 740
(B1P) SERIAL



D375-5
STRIPPING FOR PARTS



FULLY REBUILT 140G GRADER
WITH WARRANTY



325C
STRIPPING FOR PARTS



938F
GOOD RUNNING MACHINE



950H
STRIPPING FOR PARTS

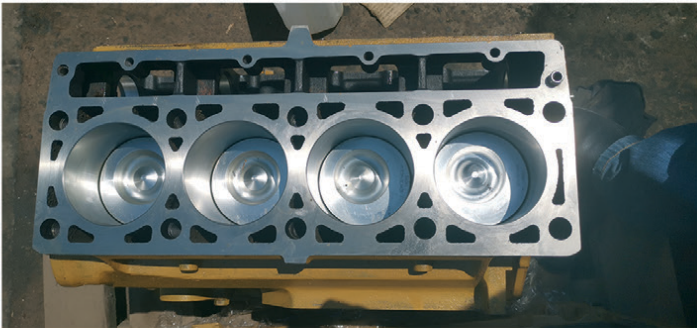


740 ADT DUMPERS X 2 RUNNING
FOR REBUILD OR STRIPPING

GOOD USED EARTHMOVING PARTS AND EQUIPMENT

STM
MINING EQUIPMENT PTY(LTD)

Tel: (011)894-6192 / (011)894-3377
Fax: (011)894 7914
barney@stmmining.co.za
donovan@stmmining.co.za
Office Hrs: Mon-Fri 07h00-17h00



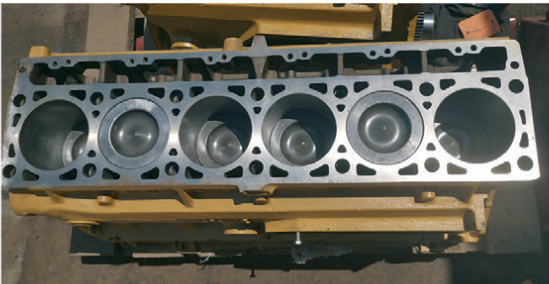
3114DI RECON SUB



**Recon C11
HEAD AND CRANK**



REMAN SUB / CAT C9



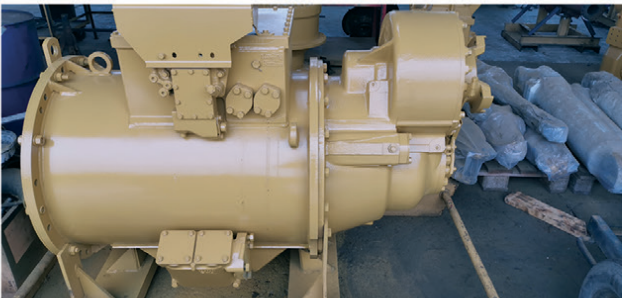
RECON 3126DI SUB



REMAN 3126 HEADS



**D10T RECON
SERVICE EXCHANGE FINAL DRIVES**



RECON 789C TRANSMISSION



**CAT C6.6
ENGINE**



**RECON D375-5
TILT CYLINDER**



**D11R
FINAL DRIVE**



**CAT 140G
TRANS RECON
S/EXCHANGE**



**3412DI
REMAN SUB**



**D8R RECON FINAL DRIVE
SERVICE EXCHANGE**

**STRIPPED
ENGINES**

3304/6
3204
3126
3406
3408
3412
3508
3512
3516

C6.4
C7
C9
C11
C13
C15
C18
C27
C32

MACHINES

EXCAVATORS

225
317B
318B
320B
325B
330B
320D
323D
330D

LOADERS

920
930
936G
938G
950A/H
966G
980F/G
988B

www.stmmining.co.za

PO Box 6456, Dunswart 1508, 40 Michelson RD. Westwood, Boksburg



Johannesburg
t: +27 (11) 614 0070
sales@itrafrica.com

Cape Town
t: +27 (21) 905 7340
capetown@itrafrica.com

Port Elizabeth
t: +27 (41) 451 2222
portelizabeth@itrafrica.com

East London
t: +27 (43) 748 3541
eastlondon@itrafrica.com



Heavy Duty Bogie Pins Available Now

The Best Aftermarket Bogie Pins For Your Machines.

Perfectly interchangeable with the OE part, ITR Heavy Duty Bogie Pins are made of a special alloy steel and undergo a special heat treatment to sustain severe and continuous load and impact conditions.

Filled with a high quality lubricating oil, the ITR Bogie Pins stand out for their excellent friction resistance, even at high temperatures.

Manufacturer's names, numbers & descriptions are used for reference purposes only & it is not implied that any part listed is the products of the manufacturers



Pinetown
t: +27 (31) 941 1133
pinetown@itrafrica.com

Middelburg
t: +27 (13) 590 5614
middelburg@itrafrica.com

Bloemfontein
t: +27 (51) 011 5620
bloemfontein@itrafrica.com

Kathu
t: +27 (53) 723 2245
kathu@itrafrica.com

Namibia
t: +264 (83) 331 5160
namibia@itrafrica.com

Zambia
t: +260 (212) 213 867
zambia@itrafrica.com

A WORLDWIDE LEADER IN AFTERMARKET EARTHMOVING PARTS AND SOLUTIONS

- Undercarriage
- Repair Parts
- Ground Engaging Tools
- Lubricants
- Track Frames
- Undercarriage Workshops
- Field Service & Measuring



**FIELD
SERVICES
NOW
AVAILABLE**



Primeplant (Pty) Ltd
Tel: 011 979 4853 Fax: 011 396 1653
www.primeplant.co.za



We specialize in the repair & maintenance of **CAT** TLB's



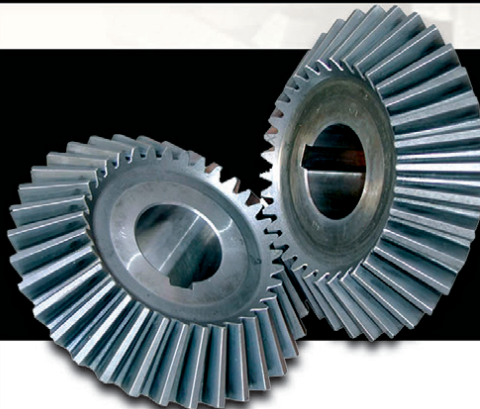
GFA

Gears for Africa

ADDRESS:
145 Lamp Road, Wadeville
Germiston

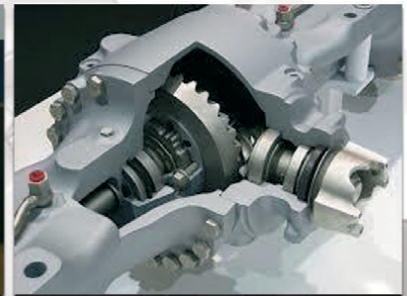
OUR QUALITY COMPARES 100 % TO ANY OEM SPARE MANUFACTURES

MANUFACTURE OF SPIRAL BEVEL GEARS NOW AVAILABLE



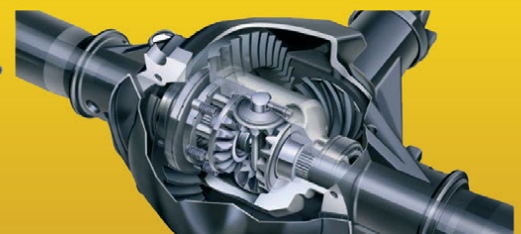
Gears for Africa products include all types of gears, sprockets, splines and related product for industrial and heavy duty equipment and practically all applications related to power drive systems:

- Bevel Gears
- Spur Gears
- Worm Gears
- Helical & Internal Helical Gears
- Crown Gears
- Internal & External Splines.



**CROWN WHEEL AND PINION, PLANETARY, SUN AND RING GEARS
FINAL DRIVE GEARS, DIFF HOUSINGS SPIDER CROSS KITS, SPIRAL BEVEL GEARS**

**FOR THE MINING, RAIL, HEAVY EARTH MOVING, BUILDING,
AND AGRICULTURAL INDUSTRIES**



**083 657 0522 | carl@gearsforafrica.co.za
www.gearsforafrica.co.za**

**Tel: 011 824 2017
Fax: 011 420 3314**



ALLISON TRANSMISSION DISCS & SEAL KITS



29 Romeo Street, Boksburg, South Africa
www.sintech.co.za | sales@sintech.co.za | +27 (0)11 823 2359



@sintechza



@sintechza



@sintech



Proudly a BBBEE
LEVEL 1 CONTRIBUTOR



Earth Mach
MINING AND CONSTRUCTION EQUIPMENT



SPECIALISING IN
GALLION, DRESSER,
KOMATSU, SEM &
CATERPILLAR



Repairs on all types of equipment
Cummins engine conversion on Komatsu
TLB's / repair & supply of new radiators
break & clutch repairs / general repairs
& rebuilding / auto electrical repairs
& rewiring / fuchs oils & greases /
field service repairs



SEM

A Caterpillar Brand



**THE PERFORMANCE YOU NEED,
THE SUPPORT YOU EXPECT**

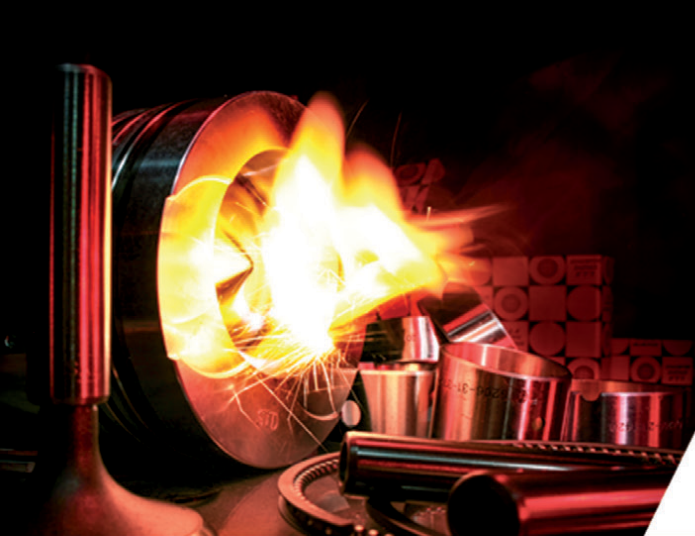
OTHER EQUIPMENT



GENIUNE SEM PARTS QUALITY AT ITS BEST

Steyn St. 34, Carolina, 1185.
PO Box 1446, Carolina 1185
Tel. (017) 843 2072 Fax. 086 732 1739
Cell. 083 232 8713

chris@earthmach.co.za
www.earthmach.co.za
VAT REG No. 4280260417
BBEE Level 2



SHIN LI
TRADING ©



*We Specialise in
Japanese & Korean
Earthmoving Spares*

ENGINE SPARES

Liner Kits, Gasket Kits, Valves & Guides,
Water Pumps, Oil Pumps, Crank & Cam Shafts,
Engine Bearings & Bushings



Mitsubishi
Komatsu
Doosan
Nissan
Isuzu
Hino

HYDRAULIC PARTS

Kawasaki Pumps

New and Complete



Final Drives

20 Ton Excavator
Final Drive Parts
& Complete Units



Komatsu Gear Pumps

Transmission Pumps
Steering Pumps
Main Pumps



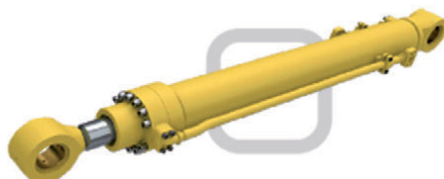
Kawasaki Rotating Groups

K3V and K5V Series
Inner Parts
Rotating Groups
Seal Kits



Komatsu Cylinders

Complete Cylinders
Seal Kits



WWW.SHINLITRADING.CO.ZA

Email:

sales@shinlitrading.co.za (Chris)
sales2@shinlitrading.co.za (Wimpie)
sales3@shinlitrading.co.za (Martin)
sales4@shinlitrading.co.za
sales5@shinlitrading.co.za (Steven)

Address: 67 High Road

Bredell A/H
Kempston Park

Tell:

011 396 1081
011 552 5900 /1/2

Fax:

086 666 2537



***Working hard,
so you don't have to.***

WWW.SHINLITRADING.CO.ZA

UNDERCARRIAGE

Track Links



Sprockets



Idlers



Track & Carrier



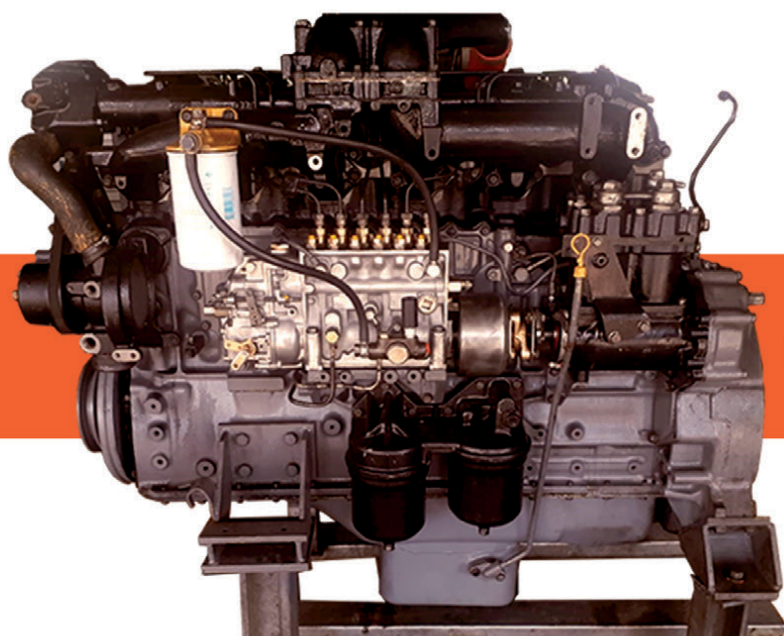
Rollers



Track Plates

Bolts & Nuts

**Genuine Hyundai
20 Ton Track Frames**



6D22T FOR SALE

Address: 67 High Road
Bredell A/H
Kempton Park
Tell: 011 396 1081
011 552 5900 /1/2
Fax: 086 666 2537

**Scan the QR Code
to see our website:**



**SHIN LI
TRADING** ©



OUTWORLD: www.outworld.co.za

*Our products cover
the full range of wearparts.*

ROCKTECH
ROCKTECH ESIZAYO AFRICA (PTY) LTD

We've been in the business of supplying the earthmoving industry with top quality wearparts for a long time. Little wonder, then, that our customers consider us groundbreakers.

Tel: +27 11 793 6838 | Fax: +27 11 793 6626 | Web: www.rocktech.co.za | Email: russell@rocktech.co.za



ROCK PENETRATION ABRASION –CE
ABRASIVE ROCK AND ROCK PILES



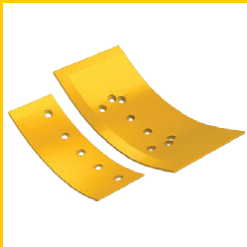
PENETRATION PLUS
HIGH IMPACT, HIGH PENETRATION



HEAVY DUTY PENETRATION
HOT SLAG, ABRASIVE CONDITIONS



SUPER V TYPE
ALL SIZES AVAILABLE



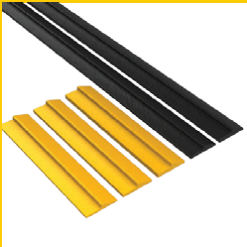
OVERLAYS
CAT, GALLION, KOMATSU, VOLVO, MITSUBISHI



GRADER BLADES
ALL TYPES- CURVED, FLAT, ALL SIZES AND THICKNESS



SCARRIFIER SHANKS AND TIPS



HALF ARROW PROFILES
HARDENED TO 500BN FOR EXTREME WEAR 19MM, 29MM, 40MM, 3.6M LENGTHS, 1.2M LENGTHS



RIPPER SHANKS AND TIPS



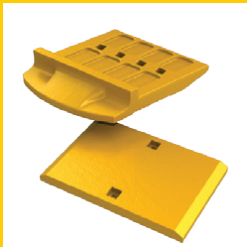
END BITS- HOT CUPPED
GENERAL PURPOSE BORON STEEL
CAT, KOMATSU, LIEBHERR- ALL SIZES



END BITS- HEAVY DUTY CAST
EXTREME WEAR CONDITIONS AND MINING APPLICATIONS



CUTTING EDGES
MANUFACTURED FROM BORON STEEL FOR MAXIMUM LIFE.
ALL SIZES AND THICKNESS CAN BE MANUFACTURED



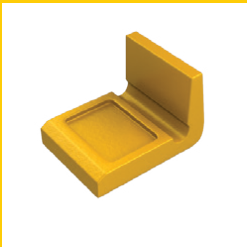
BUCKET-SEGMENTS
ALL SIZES AVAILABLE, CUSTOM MADE TO
SUIT YOUR LOADER



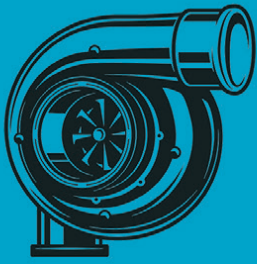
LIP SHROUDS
SUITABLE WELD-ON AND MECHANICAL LIP SHROUDS
AVAILABLE FOR ALL LIP SIZES



WING SHROUDS
SIDE BUCKET PROTECTION - ALL SIZES AVAILABLE



HEEL SHROUDS
BUCKET PROTECTION. ALL BUCKET SIZES



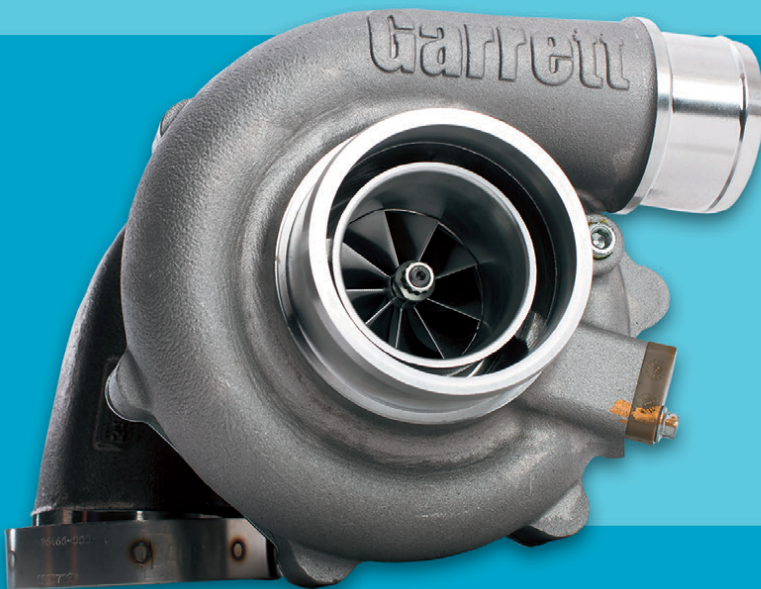
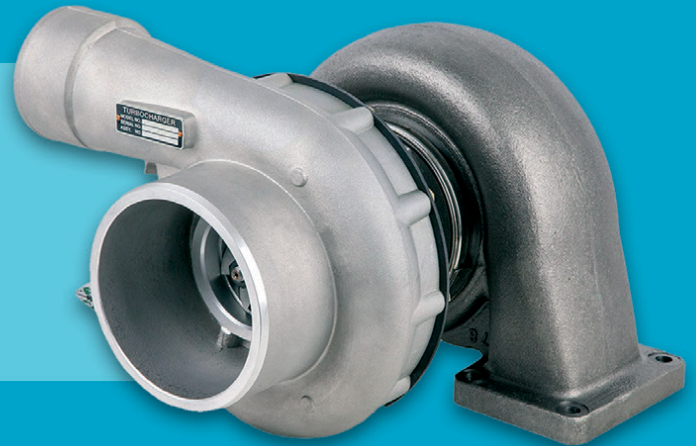
TURBOWORKS

"Best quality turbochargers - no compromise"

For all Construction and Mining machine turbocharger requirements, contact TURBOWORKS for the best and most cost-effective solution.

TURBOCHARGERS

- New
- Reconditioned, service-exchange
- Repairs



SECTORS

- Mining
- Plant hire
- Transport
- Agriculture
- Passenger vehicle
- Generators

**POPULAR SERVICE-EXCHANGE TURBOCHARGERS,
AVAILABLE FOR IMMEDIATE DELIVERY.**



- All makes and models
- 12 Months warranty
- Free "Strip-and-quote"
- Pick-up and deliver
- Supplying the entire African continent



57 Adriana Crescent, Gateway Industrial Park, Rooihuiskraal, Centurion

Tel: +27 12 653 7507

Email: sales@turboworks.co.za

www.turboworks.co.za

After-hours: +27 82 824 8037

BMH IS OFFERING THE FOLLOWING EQUIPMENT FOR SALE.
ALL EQUIPMENT WAS PURCHASED NEW FROM THE RELEVANT O.E.M.
COMPLETE REPAIR AND MAINTENANCE HISTORY AVAILABLE UPON REQUEST.



1 x HITACHI ZX400LCH-5G HYDRAULIC EXCAVATOR
Year Model: 2016
Hours (SMR): 14 949



2 x HITACHI ZX330LC-5G HYDRAULIC EXCAVATORS
Year Model: 2017
Hours (SMR): 9 173 & 15 539



1 x HITACHI ZX470LC-5G HYDRAULIC EXCAVATOR
Year Model: 2013
Hours (SMR): 13563



1 x BELL 850J DOZER
Year Model: 2018
Hours (SMR): 6112



6 x BELL B30D ARTICULATED DUMP TRUCKS
Year Model: 2008 - 2013 / Hours (SMR): Between 10 000 – 25 000 hours



4 x BELL B30E ARTICULATED DUMP TRUCKS
Year Model: 2018 / 2019
Hours (SMR): 6119, 6292, 5783, 6877



1 x MERCEDES BENZ ATEGO 1517 – 8000L DIESEL BOWSER
Year Model: 2000
KM Reading: 48232

Prices available on request.
Viewing of equipment can be arranged.

Contact Person:
Karen van Zyl – 011 964 1179 / info@bulkmachine.co.za



INDUSTRIAL PLANT SOLUTIONS



ENGINES



TRANSMISSION



FINAL DRIVES



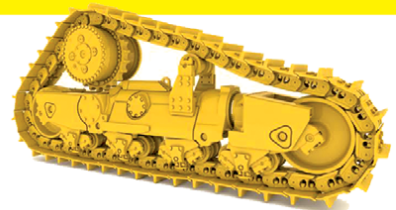
PUMPS



BUCKETS



MISCELLANEOUS



SUB ASSEMBLIES



C4.4 LongBlock
3116 Longblock
C11 Longblock
D8R Longblock
C15 Short Sub

CRANKSHAFTS ORIGINAL



C7 Crankshaft
C9 Crankshaft
C11 Crankshaft
C13 Crankshaft

D8R/T ORIGINAL



D8R Engine
D8R Final Drives
D8R Torque Converter
D8T Torque Converter

AVAILABLE ON THE FLOOR NOW!

New, used and reconditioned components - all makes.

If it's from your machine, we'll find a replacement!!

Contact Us:

✉: sales@ipsglobal.net

f: [facebook.com/IndustrialPlantSolutions](https://www.facebook.com/IndustrialPlantSolutions)



WhatsApp Message
+27 (0)82 405 3494

Inspections & Assessments Also Done

EMS

Earthmoving Machine Sales



Jason Ward
+27 83 412 1077
jason@sa-ems.co.za



1 X 2013 JCB 3DX
7000 HOURS



1 X 2016 CAT D6R FORESTRY SPEC
1200 HOURS



2 X 2008 BELL B25DS
14000 HOURS



1 X CAT 426F
2018 MODEL - +-3000 HOURS



1 X 2006 CAT D6R STANDARD SPEC
2008 – 14000 HOURS

EMS

Earthmoving Machine Sales



Jason Ward
+27 83 412 1077
jason@sa-ems.co.za



1 X 2011 CATERPILLAR 140K
9000 HOURS



1 X 2014 CATERPILLAR 140K
5000 HOURS



1 X CAT 428F
3100 HOURS – 2017 MODEL



1 X CAT 320D
2012 MODEL - 11000 HOURS



1 X 2006 DYNPAK 250
9000 HOURS



1 X 2006 BELL B25C
23 000 LTR WATERCART



2 X VOLVO EC210
13000 HOURS



1 X CASE 1430 SKIDSTEER
3100 HOURS



1 X 2011 BOMAG BW213-D40
SMOOTH DRUM WITH SHELL KIT
2000 HOURS



BULL MACHINES FINDS NEW HOME WITH KEMACH EQUIPMENT

In an endeavor to provide a more significant value proposition to its customers, Kemach Equipment, the leader in the sale of Backhoe Loaders (BHL's or TLB's) in the South African region, has joined with BULL to promote its range of the world's most efficient BHL's. 'I am very excited to announce the next chapter in our future. Effective 1 July 2021, Kemach Equipment is the official supplier of the complete BULL range of backhoe loaders' says Les Lothian, CEO of Kemach Equipment.

Kemach will supply the full range of BULL BHL's that are renowned for low fuel consumption and efficient productivity. All BHL's will be supplied complete with air-conditioning, full ROPS and FOPS and an industry-first 3 years/4000-hour wet drive train warranty as standard.

Les Lothian goes on to say, 'Through our national network, we will continue to offer exceptional support on these products, thus ensuring our customers' needs are met with optimal uptime and operating effectiveness.'

The BULL range of BHL's is the heavyweight champion that offers more productivity and efficiency with higher bucket capacity and breakout force while also being the tallest dumping BHL globally. Coupled with better weight distribution, makes the BULL highly fuel-efficient, thanks to its Power Drive and intelligent hydraulic dual pump systems. The heavy-duty componentry makes this machine extraordinarily reliable and still supports operator comfort and visibility.

'The world has changed, and our customer needs have evolved. We believe that with the addition of the BULL product to Kemach Equipment's expanding world-class offerings, we have the ultimate earthmoving solution across all industries.'

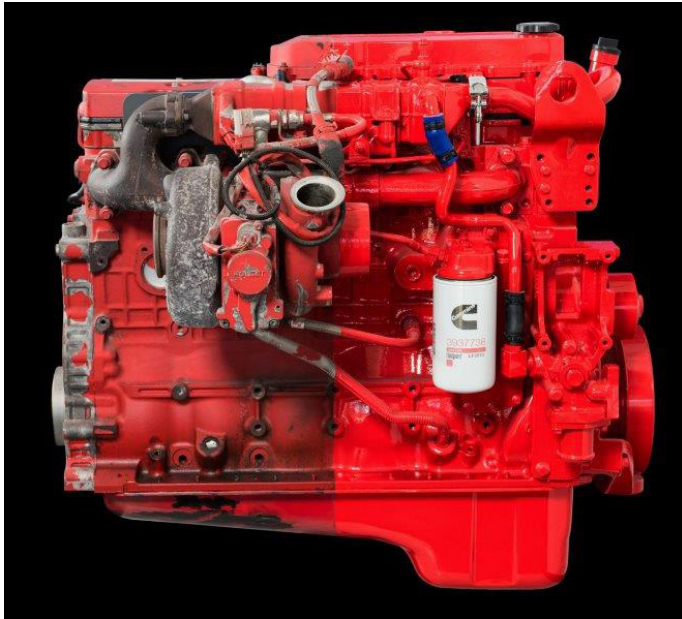
Kemach Equipment has, for the last eighteen years, built up significant trust with customers in the South African market across various industries by providing exceptional support on its offerings of world-class products. It continues its relentless efforts to delight its customers with best in class solutions/offerings.



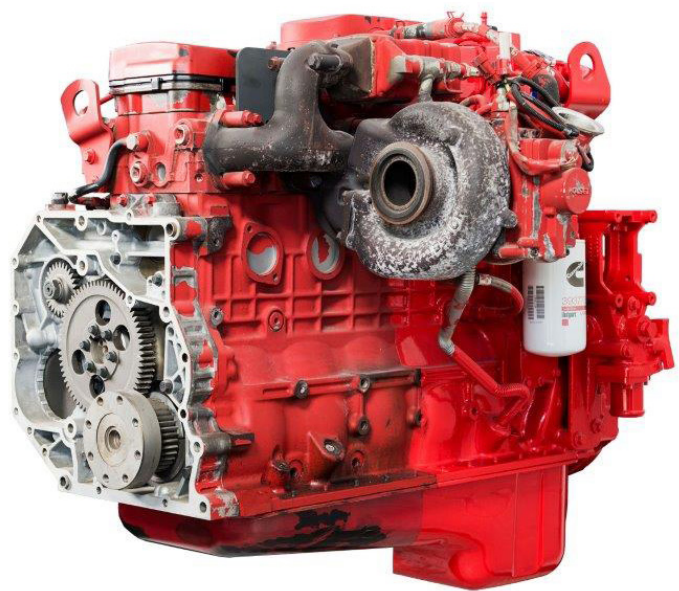


Cummins ReCon® Parts and Engines reduce downtime and running costs

Engines from Cummins have a global reputation for delivering exceptional value over the entire lifespan of the equipment. However, a time is eventually reached when major components need to be replaced or overhauls performed. Here is where Cummins ReCon Parts and Engines are an ideal solution to reduce downtime and costs, according to Israre Marjan, Territory Sales Manager at Cummins North in Casablanca.



Cummins ReCon Parts and Engines are remanufactured to be identical to brand new Cummins Genuine Parts



Cummins ReCon Parts and Engines are an ideal solution to reduce downtime and costs.

Having worked for Cummins since 2017, Marjan was appointed to her current role from the beginning of February this year. Tasked to support and develop initiatives in North, West and Central Africa, she says that mining accounts for the lion's share of Cummins' business in countries like Ghana, Morocco and Tunisia, while in countries like Nigeria, Power Generation is the primary focus. Marjan highlights that Cummins is able to offer its customers two options, namely New or ReCon components, with the latter being a particularly cost-effective option. "We have quite an extensive range of ReCon Parts, in addition to certain engine platforms where we offer factory reconditioned engines with exactly the same warranty as new ones." Therefore, Cummins has embarked on a concerted education and awareness drive among its distributors, partners and customers about the added value offered by its ReCon range.

The major benefit for customers is that they are immediately issued with a replacement ReCon Part upon returning it. All fast-moving items are available off-the-shelf throughout Cummins' extensive distribution network for maximum efficiency and cost-effectiveness, particularly as any downtime is minimised. Not only are these engines and components completely remanufactured, they incorporate the latest upgrades in materials, design and technology, where applicable. Cummins ReCon Parts and Engines are not just simply repaired or rebuilt, but remanufactured to be identical to brand new Cummins Genuine Parts, adhering to the original specifications. Every part is completely stripped down and undergoes a rigorous process of cleaning, inspection, salvage, new part replacement (if the component does not meet specification), reassembly and testing. Worn parts are replaced with new and obsolete parts are upgraded to newer designs and materials. These are then reassembled in ISO 9001 factories and tested to ensure that they meet stringent original performance specifications. The performance of fully restored parts ensures improved performance for customers.

Advantages of Cummins ReCon Engines:

- Remanufactured to the latest Cummins performance specifications for improved performance and fuel economy
- 100% Genuine Cummins New or ReCon Parts are used for the highest quality and durability standards
- Every engine is tested at the Cummins remanufacturing plant before shipping
- Low cost or no-cost upgrades for more horsepower and newer Cummins engine technology
- No-hassle engine core acceptance based on a simple visual inspection
- Fast turnaround to get equipment back on the job quickly
- The best warranty in the business, backed by the global Cummins service and warranty network.

Cummins Contact: Sbu Gule / Director & Senior Counsel Legal and Corporate Affairs
Cummins Africa Middle East | Direct: +27 11 451 3433 / Mobile: +27 60 583 5322
Email: sbu.gule@cummins.com



BOMAG GmbH appoints Kemach Equipment as the new dealer for South Africa, Lesotho and Swaziland



Effective 01 August 2021, construction equipment manufacturer BOMAG GmbH, based in Boppard Germany, has appointed Kemach Equipment as its new dealer for South Africa, Lesotho, and Swaziland. The company markets the full BOMAG heavy and light machine range from the global market leader in compaction technology.

Kemach Equipment supplies and supports a wide range of products to suit various applications, including earthmoving and road-building equipment for all types of projects and plant hirers. The company founded in 2003, operates throughout South Africa with its national head office based in Gauteng and regional offices situated in Durban, Bloemfontein, Cape Town, Port Elizabeth, and East London. In addition to the equipment itself, Kemach Equipment distributes a full range of lubricants and genuine parts, while field service technicians and expert product support engineers ensure that assistance is always available.

As the BOMAG distributor, the company will market the entire BOMAG product range, including compaction machinery for asphalt, soil and landfill construction, milling machines, finishers and stabilizers/recyclers. The range also comprises soil stabilization equipment and binder spreaders.

“Becoming the local BOMAG dealer is an exciting opportunity for us to engage with a new product line and expand our customer offering. BOMAG has an excellent reputation for offering high-quality equipment to both local and international markets. Kemach Equipment’s success is built on putting our customers at the heart of the business by supplying only world-class premium products backed by exceptional support through our national footprint. We believe that the BOMAG range of products will further enhance our focus on delivering quality products that provide our customers with operating effectiveness and high lifecycle values”, explains Les Lothian, CEO of Kemach Equipment.

Randhir Haripersad, BOMAG Area Manager Southern Africa says: “Partnering with Kemach Equipment means a strong branch network and well-founded expertise in the region of South Africa, Lesotho and Swaziland.

Contact BOMAG GmbH:
Randhir Haripersad
Area Manager Southern Africa
Mobile: +27 79 874 0972
Randhir.Haripersad@bomag.com
www.bomag.com

Contact Kemach Equipment:
Mark Senyard
National Marketing Manager
Mobile: +27 82 904 4711
marks@kemach.co.za
www.kemachjcb.co.za



MID PLANT SERVICES

NEW & RECONDITIONED HYDRAULIC EARTHMOVING EQUIPMENT, PARTS AND REPAIRS

THE ALTERNATIVE SUPPLIER FOR DOOSAN, HYUNDAI, VOLVO AND OTHER BRANDS OF EXCAVATOR PARTS AND COMPONENTS IN SOUTH AFRICA.



CONTACT DETAILS

TEL: +27(0)11 967 0055 | TEL: +27 (0)11 967 0060 | FAX: +27(0)86 606 4597 | SALES@MIDPLANT.COM

ADDRESS: 273 3RD AVENUE, BREDELL, KEMPTON PARK | WWW.MIDPLANT.COM



earthbroker

your sourcing solution for new & used equipment & machinery

- Why deal with different people each month when you can deal with the same friendly people you always deal with.
- We are proudly South African. Support your country who understand your needs.
- WE are ABC Accredited - this means we do print the amount we say we print. No pie in the sky number. We send direct to the correct people in the industry.
- We have our PAMMS certificate...This means our database has been checked and validated.
- Your advert receives FREE online exposure on our website with our online magazine and the link to the magazine is on our App, Facebook, Instagram and LinkedIn.
- We design FREE of charge and all changes are done FREE of charge.
- NO contracts to be signed.
(Just a full calender months notice is required for cancellation)



Audit Bureau of Circulations
of South Africa



**We have an
online magazine
in which your
advert is
advertised free
of charge**

We offer excellent service and design.

**Should you have people/companies you would like
added to our database , we will happily do
that should they not already be on our database.**

Please call us for a prompt response and great service!

For further info on how to get your company listed in the Earthbroker please call...Janine - 083 456 4027



CATERPILLAR 277B

R350 000,00 + VAT

Dewald Hattingh: +27(0) 72 547
2198 +27(0) 11 973 3737
info@atlasmasjiene.co.za



1 X HITACHI ZX400LC-5G HYDRAULIC EXCAVATOR

Year Model: 2016
Hours (SMR): 14 880

Contact Person:
Neil Britz: +27 66 197 0178



CATERPILLAR 16H

R2 500 000,00 + VAT

Dewald Hattingh: +27(0) 72 547
2198 +27(0) 11 973 3737
info@atlasmasjiene.co.za



CATERPILLAR D4H

R550 000,00 + VAT

Dewald Hattingh: +27(0) 72 547
2198 +27(0) 11 973 3737
info@atlasmasjiene.co.za



USED VOLVO EC240BLC PRIME TRACKED EXCAVATOR

S/no: 15881
Year: 2013
SMR: 6610 hours

Shawn Michell
082 568 4033
shawn@plantfinder.co.za



6 X BELL B30D ARTICULATED DUMP TRUCKS

Year Model: 2008 / 2011 / 2013
Hours (SMR):
Between 10 000 – 25 000 hours

Contact Person:
Neil Britz: +27 66 197 0178



STRIPPING HITACHI 870/3

Good Runner stripping for
spares. Parts still in excellent
condition.

Rodney
0731039582
rodney@marodew.co.za



SHANTUI SD13

R450 000,00 + VAT

Dewald Hattingh: +27(0) 72 547
2198 +27(0) 11 973 3737
info@atlasmasjiene.co.za



BELL 1906 WITH FORKS

R320 000,00 + VAT

Dewald Hattingh: +27(0) 72 547
2198 +27(0) 11 973 3737
info@atlasmasjiene.co.za



BELL B20C

Mechanically good condition.
Very well priced.
R145 000

Rodney
0731039582
rodney@marodew.co.za

For further info on how to get your company listed in the Earthbroker please call...Janine - 083 456 4027

For further info on how to get your company listed in the Earthbroker please call...Janine - 083 456 4027



2 X HITACHI ZX330LC-5G HYDRAULIC EXCAVATORS

Year Model: 2017
Hours (SMR): 9090 & 15 139

Contact Person:
Neil Britz: +27 66 197 0178



ATLAS-COPCO DM30-MK2

2018 model
ready for production
Call for Price

THOMAS MITTAG
072 545 6223
info@mae-equipment.com
www.mae-equipment.com



USED CATERPILLAR 428F2 (4X4) BACKHOE LOADER

S/no: LYG02005
Year: 2017
SMR: 6250 hours

Shawn Michell
082 568 4033
shawn@plantfinder.co.za



ATLAS-COPCO D65 SMARTROC

2015 model
refurbished
Call for Price

THOMAS MITTAG
072 545 6223
info@mae-equipment.com
www.mae-equipment.com



2 X HITACHI ZX330LC-5G HYDRAULIC EXCAVATORS

Year Model: 2017
Hours (SMR): 9 173 & 15 539

Karen van Zyl - 011 964 1179
info@bulkmachine.co.za



CARMIX 3.5TON SELF-LOADING MIXER

in Excellent Condition
2010 model with only 2650hrs
plus computer printout
100% operational

TIM MARSAY +27 83 654 4248
PATRICK MARSAY +27 79 187 7937
tim@marsayequip.co.za
www.marsay.co.za



6 X BELL B30D ARTICULATED DUMP TRUCKS

Year Model: 2008 / 2011 / 2013
Hours (SMR):
Between 10 000 – 25 000 hours

Contact Person:
Neil Britz: +27 66 197 0178



KOMATSU D375A-5

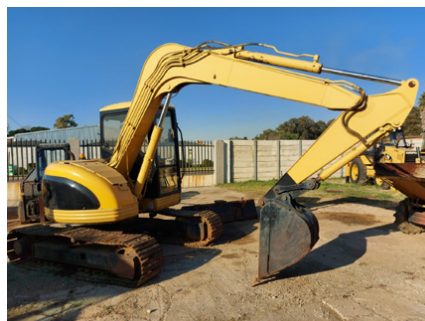
2008 model / "as is"
or refurbished 2 units available
Call for Price

THOMAS MITTAG
072 545 6223
info@mae-equipment.com
www.mae-equipment.com



D8R FINAL DRIVES & D8R TORQUE CONVERTOR RECONDITIONED

WhatsApp Message
+27 (0)82 405 3494
sales@ipsglobal.net



HITACHI EX75

R250 000,00 + VAT

Dewald Hattingh: +27(0) 72 547
2198 +27(0) 11 973 3737
info@atlasmasjiene.co.za

For further info on how to get your company listed in the Earthbroker please call...Janine - 083 456 4027

For further info on how to get your company listed in the Earthbroker please call...Janine - 083 456 4027



HADFILEDS 36X26 JAW CRUSHER

Rebuilt

TIM MARSAY +27 83 654 4248
PATRICK MARSAY +27 79 187 7937
tim@marsayequip.co.za
www.marsay.co.za



CATERPILLAR 428F

R650 000,00 + VAT

Dewald Hattingh: +27(0) 72 547
2198 +27(0) 11 973 3737
info@atlasmasjiene.co.za



VARIOUS CEMENT SILOS

IN VERY GOOD
CONDITION
50,60,80 & 100 TONS

TIM MARSAY +27 83 654 4248
PATRICK MARSAY +27 79 187 7937
tim@marsayequip.co.za
www.marsay.co.za



1 X BELL 850J DOZER

Year Model: 2018
Hours (SMR): 6112

Karen van Zyl - 011 964 1179
info@bulkmachine.co.za



CATERPILLAR 924G

R550 000,00 + VAT

Dewald Hattingh: +27(0) 72 547
2198 +27(0) 11 973 3737
info@atlasmasjiene.co.za



1 X MERCEDES BENZ ATEGO 1517 8000L DIESEL BOWSER

Year Model: 2000
KM Reading: 48232

Karen van Zyl - 011 964 1179
info@bulkmachine.co.za



KOMATSU PC450 LC-8

13 250 hours

Contact Stuart Mckenzie
Tel: 033 212 2181
Cell: 082 558 7901
Email: sjm@mckenzieplant.co.za



CAT D9R DOZER

2013 model
low hours / new serviced
Call for Price

THOMAS MITTAG
072 545 6223
info@mae-equipment.com
www.mae-equipment.com



CATERPILLAR 320C

R670 000,00 + VAT

Dewald Hattingh: +27(0) 72 547
2198 +27(0) 11 973 3737
info@atlasmasjiene.co.za



ATLAS-COPCO DML DRILL RIG

2009 model
new service
Call for Price

THOMAS MITTAG
072 545 6223
info@mae-equipment.com
www.mae-equipment.com

For further info on how to get your company listed in the Earthbroker please call...Janine - 083 456 4027

For further info on how to get your company listed in the Earthbroker please call...**Janine - 083 456 4027**



KOMATSU D375A-6

2011 model refurbished &
new undercarriage
Call for Details

THOMAS MITTAG
072 545 6223
info@mae-equipment.com
www.mae-equipment.com



VOLVO BL61

R350 000,00 + VAT

Dewald Hattingh: +27(0) 72 547
2198 +27(0) 11 973 3737
info@atlasmasjiene.co.za



BELL B20D WATER TANKERS

Contact Stuart Mckenzie
Tel: 033 212 2181
Cell: 082 558 7901
Email: sjm@mckenzieplant.co.za



1 X HITACHI ZX470LC-5G HYDRAULIC EXCAVATOR

YEAR MODEL: 2013
HOURS (SMR): 13563

Karen van Zyl - 011 964 1179
info@bulkmachine.co.za



4 X BELL B30E ARTICULATED DUMP TRUCKS

YEAR MODEL: 2018 / 2019
HOURS (SMR): 6119, 6292,
5783, 6877

Karen van Zyl - 011 964 1179
info@bulkmachine.co.za



BOMAG BW212

R300 000,00 + VAT

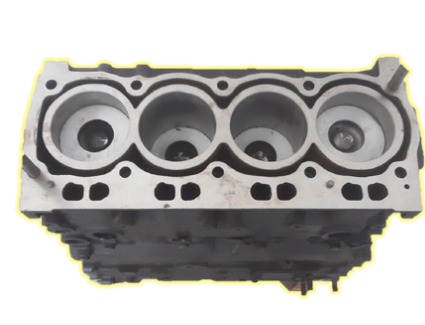
Dewald Hattingh: +27(0) 72 547
2198 +27(0) 11 973 3737
info@atlasmasjiene.co.za



CATERPILLAR 320D

R950 000,00 + VAT

Dewald Hattingh: +27(0) 72 547
2198 +27(0) 11 973 3737
info@atlasmasjiene.co.za



3054C SUB

FULL RECON SHORT SUB,
CYL HEAD AVAILABLE,
CAN SUPPLY LONGBLOCK

WhatsApp Message
+27 (0)82 405 3494
sales@ipsglobal.net

For more info on advertising your
machine or spares in the classifieds
please call **Janine** on **083 456 4027**
janine@earthbroker.co.za



4 IN 1 CAT SKIDSTEER 0.34 CUBE LOADER BUCKET

Shawn Michell
082 568 4033
shawn@plantfinder.co.za

For further info on how to get your company listed in the Earthbroker please call...**Janine - 083 456 4027**

Agriculture / Forestry

Bell Equipment
Filter Centre
LNE Agri-Earth
Manitou South Africa

Attachments

CTC Plant Company (PTY) Ltd
Plant Finder
Rhino Excavator Hammers

Buckets

Catech Engineering
INMINE - Inala mining services
Industrial Plant Solutions
Paramount Equipment
Rocktech
STM Mining
Wearpact

Crushing

Marsay Equipment

Dyno Testing

Earthmoving Specialist
Mzantsi Transmissions
Power Transmission Technology

Exhausts

Rustpet Exhausts

Engineering

All Africa Supplies
Catech Engineering
Earthmoving Specialist
Earthmach
East Coast Gears
Gears for Africa
New Beginning Designs
P&R Earthmoving

Gearbox / Transmissions

East Coast Gears
Mzantsi Transmissions
P&R Earthmoving
Power Transmission Technology
Sintech
Vortex Transmissions

Gears

East Coast Gears
Gears for Africa

G.E.T / Undercarriage

Blumaq
Centrax
ESP
ITR Africa
Industrial Plant Solutions
Mid Plant Services
P&R Earthmoving
Paramount Equipment
Rocktech
Spec-Cast Wear Parts
STM Mining
Tractor Grader Spares
Wearpact

Hydraulics

Industrial Plant Solutions
Mid Plant Services
P&R Earthmoving
Power Transmission Technology
One Stop Procurement
Tambani Hydraulics

Lifting Equipment

Liugong

Lubricants & Oils

Bell Equipment
Earthmach
Filter Centre

Machine Hire

AmPlant
BLC Plant Company
Bulk Machine Hire
Rhino Excavator Hammers

New Machines

Bell Equipment
Earthmach
Liugong
Manitou South Africa

New Parts

Bell Equipment
Blumaq
CTC Plant Company
Centrax
East Coast Gears
ESP

Should you want to receive a free copy of our magazine please email your details to janine@earthbroker.co.za

New Parts

Filter Centre
 ITR Africa
 Industrial Plant Solutions
 LNE Agri-Earth
 Manitou South Africa
 Mid Plant Services
 One Stop Procurement
 Queensburgh Plant Sales
 Prime Plant
 P&R Earthmoving
 Paramount Equipment
 Rhino Excavator Hammers
 Rustpet Exhausts
 Shin-Li Trading
 Spec-Cast Wear Parts
 STM Mining
 Shin-Li Trading
 Sintech
 Tractor Grader Spares
 Wearpact
 WEICHI SEM Parts

Pumps

All Africa Supplies
 Blumaq
 Industrial Plant Solutions
 Mid Plant Services
 Shin-Li Trading

Seats / Upholstery

The Seat Connection

Services

Bell Equipment
 CTC Plant Company
 Dura Sales
 Earthmach
 Gears for Africa
 INMINE - Inala mining services
 ITR Africa
 LNE Agri-Earth
 Power Transmission Technology
 Prime Plant
 Queensburgh Plant Sales
 Marsay Equipment
 Mid Plant Services
 RC Investments
 Vortex Transmissions

Turbos

Industrial Plant Solutions
 Turboworks
 Turbo Direct

Torque Convertors

ITR Africa
 Industrial Plant Solutions
 One Stop Procurement
 Sintech

Tyres

Associated Equipment / Vendel Civils
 Safety Grip

Used Machines

Atlas Masjiene
 All Africa Supplies
 AmPlant
 Associated Equipment / Vendel Civils
 BLC Plant Company
 Bulk Machine hire
 CTC Plant Company
 Dozer
 Dura Equipment Sales
 Earthmach
 Earthmoving Machine Sales
 INMINE - Inala mining services
 Mae Equipment
 Manitou South Africa
 Marsay Equipment
 McKenzie Plant Sales
 Mid Plant Services
 P&R Earthmoving
 Plant Finder
 Queensburgh Plant Sales
 STM Mining Equipment
 Transand
 WEICHI SEM Parts

Used Parts

All Africa Supplies
 Bell Equipment
 BLC Plant Company
 Bulk Machine Hire
 Dozer
 Dura Parts
 East Coast Gears
 Earthmoving Machine Sales
 Earthmoving Specialist
 ITR Africa
 INMINE - Inala mining services
 Industrial Plant Solutions
 Mid Plant Services
 P&R Earthmoving
 Paramount Equipment
 Prime Plant
 Queensburgh Plant Sales
 RC Investments
 STM Mining Equipment
 Shin-Li Trading
 Turboworks
 WEICHI SEM Parts

Should you want to receive a free copy of our magazine please email your details to janine@earthbroker.co.za

earthbroker

your sourcing solution for new & used equipment & machinery

The Earthbroker is published monthly and 5400 copies are sent to all the mines, quarries, and all companies dealing with earthmoving and construction in South Africa, Africa and some overseas countries.

We are **ABC accredited** and have our **Pamms certificate No: 2A8DD9F60574FFC2A4EEEE01A**.

We also have a website where anyone can view the magazine, which is updated monthly with the latest changes and advertisements. Please view our E-Mag on www.earthbroker.co.za

Our E-magazine is uploaded monthly to Facebook, Instagram, LinkedIn and our mobile App.

We accept about 5 editorials a month which we insert free of charge. Should you have an editorial which is relevant to the industry, we will gladly give it consideration.

For details of our prices on a full page, half page or quarter page, please phone me on 083 456 4027 or e-mail me at janine@earthbroker.co.za.

We do not ask anyone to sign a contract, however we do insist on a **full calendar month's notice** for cancellation.

Please note that all quotations exclude VAT. We do insertions, (own printing costs) at R1.50 each excluding VAT.

Classifieds at R500.00 excluding VAT for a business card size advertisement only.

Janine Sargeant
(CELL)083 456 4027
janine@earthbroker.co.za

**Should you want to receive a free copy of our magazine
please email your details to janine@earthbroker.co.za**

Conditions of Acceptance for advertising

Adverts are subject to the following conditions:

1. Often we receive faxes with illegible letters or numbers. We accept no responsibility due to this.
2. We accept NO responsibility for errors in advertisements received telephonically.
3. We reserve the right to refuse placement or to place the advertisement/s as we see fit.
4. No responsibility will be taken for omission of advertisements, for any errors/colour-differences in advertisements or any results due to such errors.
5. We accept no responsibility for the quality of goods advertised. We merely bring buyers and sellers into contact with each other and we are not responsible for any results due to transactions made through the advertisements.
6. Please note one full calendar months written notice for cancellations.
7. Payment due prior to publication or interest will be charged.
8. There will be an annual increase of 10% at the beginning of each year.
9. The Earthbroker will not be held responsible for content of any advert inserted in our magazine.

COMPANY	BRANCH	DESIGNATION	CONTACT	TEL NO	CELL	EMAIL
Andru Mining	JHB	Sales	Naren Birdju	(011)395 0200 / +27 82 859 0766		plantsales@andru.co.za
Atlas Masjiene	JHB		Dewald Hattingh	+27(0) 72 547 2198 +27(0) 11 973 3737		info@atlasmasjiene.co.za
Atlas Service Centre	JHB		Fourie Von Tonder		083 301 1632	
Action Equipment Co	JHB	Sales	Yolanda	011 452 1298		yolanda@action.co.za
Africaplant.com	Newcastle	Sales	Mark	034 318 3032	082 301 3961	admin@afriplant.com
Afritool – Rent	JHB		Karen Abrams	011 974 2819	082 523 9777	karen.abrams@fluor.com
Alf's Tippers JHB	Sales		Alf Ferreira	011 824 0013	083 260 6929	alfplant@global.co.za
All Africa Supplies	JHB		Jody Da Silva	011 918 9976		sales@allafricasupplies.net
Amplant	Polokwane		Eddie Simpson	015 293 1221	082 904 7694	simpsons@amplant.co.za
Anric Enterprises	JHB		Ric de Nysschen	011 740 0975	082 647 9955	anric@cybertrade.co.za
Aquajet Profiles (Pty)Ltd	JHB	Director & Sales	Brad	011 908 5550	073 470 4958	info@aquajetprofiles.co.za
Arch Equipment	JHB		Greg Archibald		082 803 4227	archhire@mweb.co.za
Associated Equipment Co	JHB	Sales	Jaap	011 801 4911/2	082 892 1327	associated1@xnet.co.za
AVANT SA CPT			Wally	021 851 0722	076 688 3399	info@avantsa.co.za
Azrel Equipment	JHB	Sales	Mike Imrie	(010)590 8048	083 230 3118	mike@azrelequipment.com
B&B Plant / Unicrane	Empangeni		Bob Fogg	035 787 0679	082 570 5781	sales@bbplant.co.za
Barloworld Equipment Co				011 929 0000		
Barloworld Equipment Co	Durban	Parts	Brett Woodhouse	031 705 8500	071 484 1035	bwoodhouse@barloworld-equipment.com
Barloworld Equipment Co	Durban	Parts	R. Haripersadh	031 705 8500		rharipersadh@barloworld-equipment.com
Barloworld Equipment Co	Newcastle	Parts	Milan Pather	034 315 2847	073 971 2046	mpather@barloworld-equipment.com
Barloworld Equipment Co	Newcastle	Sales	Brendan Moore	034 315 2847	073 781 8865	
Barloworld Equipment Co	Richardsbay	CRS	Rolfe Botes	035 797 6300	082 904 9619	jhumphries@bw-eq.com
Barloworld Equipment Co	Bloemfontein	Sales	Quentin Coetzee	051 4091200	078 460 2622	qcoetzee@barloworld-equipment.com
Bell Equipment	Richards Bay	Parts	Jackie Smith	035 907 9111	082 550 8791	bellparts@bell.co.za
Bell Equipment		Sales	Andrew Pretorius	011 928 9700	071 607 3978	partssales@bell.co.za
Bell Equipment	JHB	Used Parts	Fazel Patel	011 928 9700		usedparts@bell.co.za
Bell Equipment	JHB	Machine Sales	Myburgh	011 928 9700		sales@bell.co.za
Bert's Bricks (Pty)Ltd	Potchefstroom	Sales	Lizelle	(018)292 1615		marketing@bertsbricks.co.za
BKB Van Wyk	JHB			017 712 2132		vanwykinfo@telkomsa.net
Blumaq	JHB		John Beukes	011 966 5092		john.beukes@blumaq.com
BLC Plant Company	JHB	Machine Sales	Luigi Stravino	011 555 2000	082 552 7017	luigistravino@blcplant.com
BLC Plant Company	JHB	Machine Sales	Paolo Stravino	011 555 2000	082 852 3721	paolotravino@blcplant.com
BLC Plant Company	JHB	Machine Sales	Andrew McCall	011 555 2000	082 256 0334	andrewmccall@blcplant.com
BLC Parts	JHB	Parts Sales	Robbie Stocks	011 555 2000	082 492 9263	
BLC Parts	JHB	Sales	Mike du Plessis	011 555 2000	082 508 2908	mikeduplessis@blcplant.com
BLC Parts	JHB	Sales	Michael Marriott	011 555 2000	082 905 8983	michaelmarriott@blcplant.com
BMH Trading International	Cape Town		Bradley	021 903 2667	082 780 0084	bradley@bmhtradinginternational.com
Bom-mach / Stampede	JHB	Sales	Jabu	011 394 5704		info@stampede.co.za
Bruforce	JHB		Craig	011 393 1298	083 627 2533	bruforce@lantic.co.za
Bulk Machine Hire	Bapsfontein	Sales	Neil Britz	066 197 0178		karen@bulkmachine.co.za
Burgers Equipment & Spares			Anka Burger	011 979 3636		admin.za@burgersafrica.com
Caldas Engineering & Manufacturing	JHB	Marketing	Melanie	011 453 7797		info@caldas.co.za
Capital Equipment Parts	JHB		Mark	011 568 4215		info@capiparts.co.za
Catech Engineering	JHB		Lee Bray	071 687 9274		lee@cattam.co.za
Centrax	JHB	Sales	Trevor	011 392 5055	083 608 5550	trevor@centraxsa.co.za
Centrax	DBN	Sales	Steve	086 123 6872	083 613 0664	centraxkzn@telkomsa.net
Cranes Direct	Boksburg	Parts Sales	John Thage	011 894 8056	083 254 4068	john@cranesdirect.co.za
Cranes Direct	Boksburg	Sales	Mark Le Roy	011 894 8056	083 233 2140	mark@cranesdirect.co.za
CTC Plant Company	Cape Town	Owner	Colin McOwen	021 386 4190	082 440 4806	colin@ctcplant.co.za
CTC Plant Company	Cape Town	Sales	Evert Jooste	021 386 4190	082 825 8865	evert@ctcplant.co.za
CTC Plant Company	Cape Town	Sales	Peter Groenewald	021 386 4190	072 368 5581	peterg@ctcplant.co.za
CTC Plant Company	Cape Town	Sales	Mark Walker	021 386 4190	082 441 2446	markw@ctcplant.co.za
CTC Plant Company	Cape Town	Sales	Robert Freeman	021 386 4190	079 500 3940	robert@ctcplant.co.za
CTC Plant Company	Cape Town	Parts	Mark Swanepoel	021 386 4190	082 825 6966	marks@ctcplant.co.za
CTC Plant Company	Cape Town	Parts	Nico Vermeulen	021 386 4190	084 525 6966	nic_v@ctcplant.co.za
CTC Plant Company	Cape Town	Service	Olla van den Heever	021 386 4190	082 467 1894	olla@ctcplant.co.za
CTC Plant Company	Cape Town	Transport	Ian Geyser	021 386 4190	082 440 5861	ian@ctcplant.co.za
CTC Plant Company	Cape Town	Transport	Shaun Haman	021 386 4190	082 495 2640	shaun@ctcplant.co.za
DBZ Diesel Parts	JHB			087 751 4555	074 106 2158	jhb@dbzdiesel.com
DBZ Diesel Parts	Cape Town		Jason Martincich	021 556 6502	082 353 5971	jason@dbzdiesel.com
DBZ Diesel Parts	Durban			031 564 8091/2	082 565 8446	durban@dbzdiesel.com
D- MAN SALES	JHB	Sales	Wessels		072 172 7718	wessels@lpss.co.za
Deutz Diesel Engines	Meadowdale		Johan Reiners	(011)974 3549	082 457 1542	miere@icon.co.za
Deutz Diesel Power	Durban	Branch manager	Nivern Pather	031 700 2384	082 375 4912	nivern@deutz.co.za
Deutz Diesel Power	JHB		Nathan Kitchen	011 923 0600		nathan@deutz.co.za
DGI Trading	JHB		Henk Arnold	010 065 0888	083 233 0019	henk.arnold@dgitrading.co.za
Dirt Diggers	JHB		Vic Viljoen	011 023 6674	082 822 3915	vicv@merchantwest.co.za



**“The man who stops advertising
to save money is like the man
who stops the clock to save time.”**

- Thomas Jefferson -

In difficult economic times one should put more effort into promoting
your business, your services and your products.

Cutting back on your advertising will ensure that your business loses ground
to competitors who know and understand this.

Quick Reference

COMPANY	BRANCH	DESIGNATION	CONTACT	TEL NO	CELL	EMAIL
Dosco Hydraulic Eng. cc	Montague Gardens		David Laubscher	021 551 2283	082 579 6465	david@doscocape.co.za
Dosco Hydraulic Eng. cc	Montague Gardens		Mike Hart	021 551 2283	082 228 5031	
Dozer	JHB		Graeme	011 452 1224		info@dozer.co.za
Dozer	JHB	Specialized Sales	Chris Cronje	011 452 1224	082 491 5472	info@dozer.co.za
Dura Equipment	JHB	Sales	Prinsloo Munro	011 918 4760	071 611 7281	prinsloo@durasales.co.za
Dura Equipment	JHB	Sales	Ernest Human	011 918 4760	079 874 5458	ernest@durasales.co.za
Dura Equipment	JHB	Sales	Jerry van Niekerk	011 918 4760	082 895 5611	durasales.co.za
Dura Equipment	JHB	Sales	Coenie Albertyn	011 918 4760	083 251 8046	coenie@durasales.co.za
Dura Equipment	JHB	Sales	Curtis Brown	011 918 4760	083 258 5784	curtis@durasales.co.za
Dura Equipment	Cape Town	Sales	Pottie Potgieter	021 988 6618	083 600 0729	pottie@durasales.co.za
Dura Equipment	Cape Town	Sales	Gerrie du Randt	021 988 6618	082 950 7040	gerrie@durasales.co.za
Dura Equipment	Cape Town	Sales	Charmaine Lombard	021 988 6618	082 777 1544	charmaine@durasales.co.za
E&A Spares	Durban	Sales	Deva	031 700 5791/2	082 659 5521	easpares@jiafrica.com
Earth Mach	Mpumalanga		Chris	017 843 2072	083 232 8713	chris@earthmach.co.za
Earth Moving Plant & Trans.	Pinetown		Richard	031 705 1770	083 777 0152	richard@ept.co.za
EHD Johannesburg		Sales	Lodewyk van As	011 870 5000		ehd@ehd.co.za
Earthmoving Machine Sales	KZN	Sales	Jason	031 777 1025	083 412 1077	jason@sa-ems.co.za
East Coast Gears	KZN	Sales	Johan	031 701 3500	084 244 3324	eastcoastgears@gmail.com
ELB Equipment				011 306 0700		elb@elbequipment.co.za
Equipment Parts & Engines	Isando	Managing member	Attie vd Bergh	011 571 9000	082 655 9276	info@equipmentparts.co.za
ESP	Isando	Div Manager	Gary Wright	011 398 1700	082 449 6773	garyw@espa.co.za
ESP	Benoni	Div Manager	Adrian Erasmus	011 845 2911	083 449 0519	adriane@espa.co.za
ESP	Pretoria	Reg Manager	Willie v.d Merwe	012 804 6706	082 789 0828	williev@espa.co.za
ESP	Middleburg	Div Manager	Leon Bezuidenhout	013 246 2520	083 778 9877	leonb@espa.co.za
ESP	Pinetown	Reg Manager	Shaun Clarke	031 705 4200	082 413 1103	shaunc@espa.co.za
ESP	Cape Town	Reg Manager	Jaco Bekker	021 945 1030	072 384 4901	jacob@espa.co.za
ESP	Port Elizabeth	Branch Supervisor	Rainier Gerber	041 484 4575	083 698 1805	rainiERG@espa.co.za
ESP	Bloemfontein	Reg Manager	Craig Wansbury	051 432 4501	082 413 2708	craigw@espa.co.za
ESP	Kimberley	Branch Supervisor	Kingsley Olyn	053 831 8349	082 805 7558	kingsleyo@espa.co.za
Filter Centre	Pinetown	Manager	Viyen Maharaj	031 700 9074	076 727 3985	info@filtercentre.com
Filvent	Witbank		Bernard	013 656 2726		workshopmanager@filvent.co.za
Fluid Blast Engineering	JHB		George Slabbert		082 550 1385	fluid.blast@live.com
Force 8 CC	Cape Town		Justin Nicoll	021 535 1117	082 373 9802	info@force8.co.za
Full Blast Hydraulics	JHB		Andre Calitz	(011)900 3790		info@fullblasthydraulics.com
Fusion Torque Components	JHB	Director	Eldred Carstens	011 828 9023	083 460 6790	eldredfusion@telkomsa.net
Gears for Africa	JHB	Sales	Carl	011 824 2017		carl@gearsforafrica.co.za
Gears for Africa	CPT	Sales	Carl	021 577 1030		carl@gearsforafrica.co.za
GET Spares	JHB	Sales	Raymond	(011)397 5276	082 655 2301	sales@getspares.co.za
GET Spares	JHB	Sales	Freddy	(011)397 5276	082 604 0045	sales@getspares.co.za
GET Spares	JHB	Sales	Clyde	(011)397 5276	082 581 5152	sales@getspares.co.za
Gillroy	Durban		Rob Gillit	031 765 2745	083 661 2057	info@gillroyplant.co.za
G-Man Trading	JHB	Sales	Luke Jr.	011 672 7011		lukejR@gman.co.za
GO Industry - Dove Bid			John Cowing	0861 463 683	083 662 0237	john.cowing@liquidityservices.com
GR Spares	Pinetown	Sales	Gavin	031 705 5463	082 452 8690	grspares@webstorm.co.za
Grindright Engineering	Middelburg		Piet De Vos	013 246 2308	064 849 2320	grindright@gmail.com
HL Du Plooy	Harrismith		Hennie Du Plooy	082 719 8744	082 574 4212	hennie@hlduplooyplant.co.za
Heavy Duty Earthmoving Parts			Jannie Burger	011 394 4125/6/7		jannie@hdep.co.za
HPE Africa	Jet Park	Sales Manager	Lani	011 397 4670		marketing@hpeafrica.co.za
HPE Africa	Durban	Branch Manager	Adam Armitage	031 700 3426		Adam.armitage@hpeafrica.co.za
HPE Africa	East London	Branch Manager	Leon Dreyer	043 732 1428		leon.dreyer@hpeafrica.co.za
HPE Africa	Cape Town	Branch Manager	Gary Pneumaticos	021 905 0581/2		Gary.P@hpeafrica.co.za
Industrial Engine Parts	JHB	Sales	Morne	011 868 5436	082 851 7514	sales@ieppower.co.za
Industrial Plant Solutions	Natal		David Botha		083 405 3494	sales@ipsglobal.net
Inmine Inala Mining Services	Witbank		Clement Van Der Merwe		082 414 1393	sales@inmine.co.za
ITR Africa	Johannesburg	Sales Mgr - Nat	Carel Zwiegelaaar	011 614 0070	076 874 7296	carel.zwiegelaaar@itrafrica.com
ITR Africa	Johannesburg	Sales Mgr - U/C	Sean Smit	011 614 0070	072 271 6069	sean.smit@itrafrica.com
ITR Africa	Johannesburg	Sales Mgr - RP	Edwin Luttig	011 614 0070	076 570 0911	edwin.luttig@itrafrica.com
ITR South Africa	Johannesburg	Sales Mgr - Int	Michael Sanderson	011 614 0070	062 311 3376	michael.sanderson@itrafrica.com
ITR South Africa	Middelburg	External Sales	Rudi Le Roux	013 590 5614	083 500 3763	rudi.leroux@itrafrica.com
ITR South Africa	Kathu	External Sales	Mark Ingram	053 723 2245	082 759 2886	mark.ingram@itrafrica.com
ITR South Africa	Cape Town	Area Manager	Roy De Bruyn	021 905 7340	079 107 2112	roy.debruyne@itrafrica.com
ITR South Africa	Port Elizabeth	Area Manager	Roche Bester	041 451 2222	082 476 9667	roche.bester@itrafrica.com
ITR South Africa	East London	Area Manager	Shaun Smith	043 748 3541	079 948 2965	shaun.smith@itrafrica.com
ITR South Africa	Pinetown	Area Manager	Quintin Pillay	031 941 1133	079 492 4519	quintin.pillay@itrafrica.com
ITR South Africa	Bloemfontein	Area Manager	Jacques Billing	051 011 5620	082 928 1964	jacques.billing@itrafrica.com
ITR Namibia	Windhoek	Director	Hanjo Schierschmidt	+264 83 331 5160	+264 81 155 5539	hanjo.schierschmidt@itrafrica.com
ITR Zambia	Kitwe	Director	Andre Snyders	+260 96 351 3429	+260 96 351 3429	andre.snyders@itrafrica.com
J&T Earthmoving Maintenance	Kempton Park		Alex Savage		081 895 5583	alex@earthmovingmaintenance.co.za
Jacobs Transport	Vereeniging	Sales	Gys Jacobs	010 200 9946	083 544 0275	gys@jacobstransport.co.za
JBS Plant Hire	Klerksdorp		Tonie van den Heever	018 469 1016/7	083 654 7809	jjvdh@lantic.net
Johnson Taylor	JHB	Sales Manager	Graham	011 614 5122		graham@johnsonTF.co.za
JW Plant Hire and Sales	Welkom	Sales	Leon	057 355 1119	083 253 6110	j.w.plant@telkomsa.net
Kaltire			Jacques Roux	012 548 9327	083 777 9497	jacques.roux@kaltire.com
Kappa Engineering		Managing Director	Gerrie Visagie	011 828 5506/8	082 575 2199	gerrie@kappaeng.co.za
Kappa Engineering Procurement		Rebuild Director	Nathaniel Hauptfleisch	011 828 5506/8	082 928 6312	nathaniel@kappaeng.co.za
KDH Hydraulics	JHB		Ricus	011 762 9001/2	071 678 3746	ricus@kdhhydraulics.co.za
Kemach JCB	JHB			011 826 6710		sales@kemachjcb.co.za
Kemach JCB	Middleburg			013 244 1839		sales@kemachjcb.co.za
Kemach JCB	Pretoria			012 548 2956		sales@kemachjcb.co.za
Kemach JCB	Bloemfontein			051 432 3978		sales@kemachjcb.co.za
Kemach JCB	Durban			031 700 8278		sales@kemachjcb.co.za
Kemach JCB	Richards Bay			035 751 2718		sales@kemachjcb.co.za
Kemach JCB	CPT			021 949 7442		sales@kemachjcb.co.za

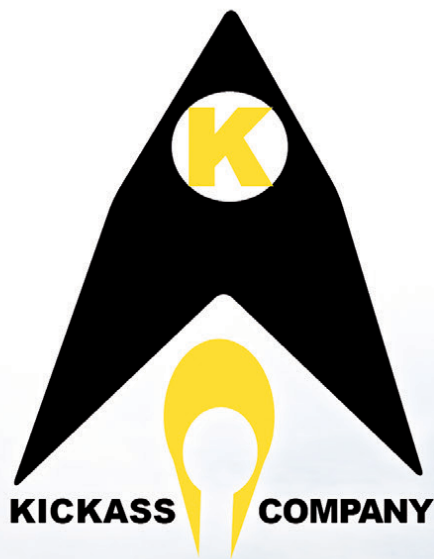
COMPANY	BRANCH	DESIGNATION	CONTACT	TEL NO	CELL	EMAIL
Kemach JCB	Port Elizabeth			041 453 1819		sales@kemachjcb.co.za
Kemach JCB	East London			043 732 1902		sales@kemachjcb.co.za
Kemach JCB	George			044 878 0366		sales@kemachjcb.co.za
Kemach JCB	Mthatha			047 531 1688		sales@kemachjcb.co.za
KHD Electrical			Delville Kuhn	011 392 4444		delville@khdiesel.co.za
Komatsu	Cape Town	Sales	Frederick van Ryneveld	021 951 1251	082 317 2849	info@komatsu.co.za
Komatsu	Bloemfontein	Sales	Ian Banham	051 434 2221/2		ian.banham@komatsu.co.za
Komatsu	Gauteng	Sales	Graeme Armstrong	011 923 1000		Graeme.Armstrong@komatsu.co.za
Komatsu	Gauteng	Sales	Karen van der Walt	011 923 1000		Karen.vanderWalt@komatsu.co.za
Komatsu	Gauteng	Sales	Francois Griesel	011 923 1000		Francois.Griesel@komatsu.co.za
Komatsu	Kimberley	Sales	Jaco Van Heerden	053 832 2061		jaco.vanheerden@komatsu.co.za
Komatsu	Pinetown	Sales	Jacques van der Sandt	031 710 4950	082 888 0995	info@komatsu.co.za
Komatsu	Port Elizabeth	Sales	George Hyman	041 452 6555	082 882 9576	george.hyman@komatsu.co.za
Komatsu	White River	Sales	Fortune Mathiba	013 758 9900	083 675 1756	Fortune.mathiba@komatsu.co.za
Komatsu	Wolmeransstad	Sales	Piet du Toit	018 596 2244	083 271 3567	info@komatsu.co.za
Komax Spares	JHB		Jacques	011 664 8828	082 616 1654	jacques@jsaearth.co.za
Komax Spares	JHB		Gawie	011 664 8828	082 650 0505	
Komax Spares	JHB		Danie	011 664 8828	076 222 2708	
Kruiper Spares	Port Elizabeth	Sales	Gary	041 585 6455	083 321 0819	kruiper@global.co.za
Kruiper Spares	Port Elizabeth	Sales	Bill	041 585 6455	082 569 2740	kruiper@global.co.za
Kruiper Spares	Port Elizabeth	Sales	Philip	041 585 6455	083 235 3919	kruiper@global.co.za
Landboupart	Isando			011 966 9200		info@landboupart.com
Lee's Dozers	JHB		Lee Bray	071 687 9274		leeb@leesdozers.co.za
Leo Hydraulics				011 976 1941		admin1@leohydraulics.co.za
LiuGong Machinery SA	JHB	Parts		011 979 3636		admin.za@burgersafrica.com
LNE Agri Earth (Pty) Ltd	JHB	Sales			083 327 3237	LNE@LNE-AgriEarth.com
LPM Procurement	Germiston	Office	Linda Patricio	011 776 9160	083 637 7122	info@lpmprocurement.co.za
Machinery Contractors	Brits		Wayne	012 250 3534		wayne@machinerycontractors.co.za
Mae Equipment	Witbank	Sales	Thomas Mittag		072 545 6223	info@mae-equipment.com
Mafika Engineering	JHB			011 334 1120		info@mafika.co.za
Marange Plant & Mining	Bloemfontein		Maryke	053 841 0415	082 296 9810	maryke@marange.co.za
Marsay Equipment	Johannesburg		Tim Marsay	011 781 7410	083 654 4248	tim@marsayequip.co.za
Masslift Africa Mitsubishi Forklifts Dbn		Product Support/Spares	Brandon	031 700 8480	078 697 6161	Brandon@mlift.co.za
McKenzie Plant	Sales	Richmond/KZN	Stuart McKenzie	033 212 2181	082 558 7901	sjm@mckenzieplant.co.za
MHS Plant	JHB	Sales	Conrad	010 500 6193	082 781 9481	conrad@mhsplant.com
Midplant Services	JHB	Sales	Kellas	011 967 0055/60	083 675 1385	sales@midplant.com
Midplant Services	JHB	Sales	Jeff	011 967 0055/60	083 657 6123	sales@midplant.com
Midplant Services	JHB	Sales	Lee	011 967 0055/60	083 459 1695	sales@midplant.com
Milltech Engineering			Neil	011 421 7821	083 460 6510	neil@milltech-eng.com
Multi One Evolution	Benoni		Lofty Van Wyk		082 888 8899	info@multi-one.co.za
Mzantsi Transmissions	Johannesburg	Sales	Darryl Cilliers	011 868 5130	071 684 5784	info@gearboxes.me
N12 Truck Yard	Delmas – Mpumalanga				013 661 1039	sales@n12truckyard.co.za
Nduna Spares	Steelport		Natasha Reynders	013 230 3852		ndunaspare@gmail.com
New Beginnings Designs	JHB		Suken	011 791 4120	082 923 7987	suken@nbdesigns.co.za
NUCO Auctioneers	Dooringkloof East Pretoria		Jaco De Jager		011 206 8963	jaco@nucoauctioneers.com
One Stop Procurement	Benoni		Roger Melenas	011 420 1003	079 493 4486	roger@onesp.co.za
P&R Earthmoving	JHB	Sales	Scott	010 823 6385		scott@prearthmoving.com
P&R Earthmoving	JHB	Sales	Grant	010 823 8821		grant@prearthmoving.com
P&R Earthmoving	JHB	Sales	Ladis	010 823 7322		ladislas.l@pandrearthmoving.com
P&R Earthmoving	JHB	Sales	Greg	010 823 6276		greg@prearthmoving.com
P&R Earthmoving	JHB	Sales	Kyle	010 823 6385		kyle@prearthmoving.com
P&R Earthmoving	JHB	Sales	Conrad	010 823 7972		conrad@pandrearthmoving.com
P&R Earthmoving	JHB	Sales	Rikus			rikus@prearthmoving.com
Pacific Construction Equipment		Fairleads Benoni	Mark	011 453 1567	082 441 4587	markivan@mweb.co.za
Paramount Tracks	JHB	Sales		010 007 3258	082 894 5547	sales@paramountracks.com
Paul Heslop Plant Services			Paul Heslop	086 111 5422	074 101 8239	paul@pixie.co.za
PEX Hydraulics	Cape Town	Sales	Nick Kotzee	021 556 3232		nick@pex.co.za
PEX Hydraulics	Johannesburg	Sales	Mark Dickason	011 882 8413		mark@pex.co.za
Pex Hydraulic Repairs	KZN	Sales	Priscilla Shanker	031 705 5050	084 429 8654	priscilla@pexkzn.co.za
Pilot Crushtec	JHB			011 842 5600		sales@pilotcrushtec.co.za
Plant Finder	PE		Shawn Michell	041 379 1717	082 568 4033	shawn@plantfinder.co.za
Powertrans Rebuild Centre	Isithebe		Ricky Naidoo	032 459 5700	082 555 4925	info@powertrans.co.za
Power Transmissions Technology Benoni			William	011 022 8570		info@pttech.co.za
Primeplant	JHB		Francois	011 979 4853	066 489 4891	spares@primeplant.co.za
Queensburgh Plant Sales	JHB	Used Sales	Wikus	011 964 1631	083 235 5665	qpsales@mweb.co.za
Queensburgh Plant Sales	JHB	New Sales	Albert	011 964 1467	082 652 4907	qpsales@mweb.co.za
R21 Trucks	Centurion	Sales Manager	Mark Noble	011 206 8958	082 226 2220	mark@r21trucks.co.za
Ramm Parts	Witbank		Adriaan	076 127 2977		adriaan@rammparts.co.za
Ramm Parts	Witbank		Mark	072 530 7373		marc@rammparts.co.za
Ramm Parts	Witbank		Rodney	073 103 9582		
Randle Parts	KZN	Sales	Stan		083 653 4270	
Randle Parts	KZN	Sales	Justin		083 639 1982	justin.cope@randleparts.co.za
Randle Parts	KZN	Sales	Geoff		074 843 5298	
Rankin Training	DBN		Marcel	031 702 8447	082 909 9070	marcel@rankintraining.co.za
Reef Fuel Injection Services	JHB	Manager	Warren Hauser	011 873 2354		warren@reeffuel.co.za
Rent a Dozer	Marble Hall	Owner	Theodor Kleynhans	013 261 1746	083 459 5593	admin@rentadozer.co.za
Replacement Spares Unltd. / RSU Pretoria		Sales	Paul Pelser	012 803 8714		paul@rsu.co.za
Revaro	Gauteng	Sales	Tiaan	+27 11 794 8271	081 008 7331	sales@revaro.co.za
Revaro	Gauteng	Sales	Hans	+27 11 794 8271	062 716 4330	sales@revaro.co.za
Revaro	Gauteng	Sales	Tammy	+27 11 794 8271	083 235 9497	sales@revaro.co.za
Revaro	Gauteng	Sales	Mark	+27 11 794 8271	076 147 3572	sales@revaro.co.za
Rham Equipment	Olifontfontein		Michael Combrink	011 203 7900		info@rham.co.za
Rhino Excavator Hammers	JHB		Paul	086 111 5422	074 101 8239	sales@rhinohammers.co.za

Quick Reference

COMPANY	BRANCH	DESIGNATION	CONTACT	TEL NO	CELL	EMAIL
Rhino Excavator Hammers	JHB		Clive	(011)397 3327	071 670 8707	sales@rhinohammers.co.za
Rocktech Earthmoving Wearparts	JHB	Manager	Derek Swift	011 793 6838	082 561 4682	derek@rocktech.co.za
Roger's Undercarriage	JHB			011 964 2695	083 974 5851	rogers.uc@mweb.co.za
Ruspet Exhausts	JHB		Russell	011 827 2824	083 448 7669	russell@ruspet.co.za
Safety Grip	JHB	OTR S/Manager	Tewus Wesse	011 708 6660	083 639 2290	tewus@safetygrip.co.za
Scotty's Plant Hire	Pinetown		Ashley Scott	031 700 8000		scottys.plant@mweb.co.za
Scotty's Plant Hire	Pietermaritzburg		Ashley Scott	033 386 1653/14		scottyspmbsales@mweb.co.za
Sclanders Mech Natal		Sales	Ivan Kaisten	031 700 8083	083 653 3724	ivan@schlandermech.co.za
SEM	JHB	Parts	Barry Fang		072 399 9817	bm@semrsa.co.za
SEM	JHB	Parts	Saaj		061 564 1167	parts1@semrsa.co.za
Sew's Plant & Civils	KZN		Sunash	031 507 2491	082 284 5082	info@sews.co.za
Shin Li Trading	Johannesburg			011 396 1081/87	079 872 0465	sales@shinlitrading.co.za
Shonakhona Logistics				032 943 3428	073 188 2004	
Sino Plant	Gauteng	Sales Manager	Mark Noble	011 206 8958	082 226 2220	mark@sinoplant.co.za
Spec-Cast Wear Parts	JHB	Sales Manager	Joe Venter	011 396 1713	074 134 5507	undercarriage@spec-cast.co.za
Spec-Cast Wear Parts	Middelburg	Sales	Herman Bezuidenhout	013 813 1413	072 187 6943	herman@spec-cast.co.za
Spec-Cast Wear Parts	Kathu, N/Cape	Sales	Ilse van Rooi	053 010 1304	067 414 8832	northerncape@spec-cast.co.za
Sintech	JHB	Sales	Jacob Nkabinde	011 823 2359		sales@sintech.co.za
SparePower	JHB	Parts Sales		011 845 4184	082 457 2804	terry@sparepower.co.za
STM Mining	JHB	Sales	Barney v Rooyen	011 894 6192	072 086 6163	barney@stmmining.co.za
Tambani Hydraulics	JHB		Lee Bray	071 687 9274		lee@tamhyd.co.za
The CAT Rental Store / Barloworld		Durban		(031)569 8500	082 909 9188	mnicolia@barloworld-equipment.com
The Seat Connection	JHB	Sales	Lydia/Graham	011 452 6802/6814		info@seatconnection.co.za
TJB Earthmoving Parts Buying JHB			Brad	+27 71 154 3786		brad@tjbeearthmoving.co.za
Tommy's Auto Parts	Newcastle		Ahmed	034 375 8111	072 889 2581	exportintl@aol.com
Tractor and Grader Supplies	JHB	Sales	Jeannine	011 392 7533		jeannine@tags.co.za
Tractor and Grader Supplies	Witbank	Sales	Markus	082 921 8634		markusv@tags.co.za
Tractor and Grader Supplies	Witbank	Sales		013 492 2399		markusv@tags.co.za
Tractor and Grader Supplies	Durban	Sales	Theo	082 553 7663		theo@tags.co.za
Tractor and Grader Supplies	Cape Town	Sales	Neal Simpson	082 606 7366		neal@tags.co.za
Tractor and Grader Supplies	Swaziland	Sales	Tiago	+268 2 518 4548		tiago@tags.co.za
Tractor and Grader Supplies	Namibia	Sales	Handre	+264 61 264710/1/2		handre@powerpartsnamibia.co.za
Transand			Fran cois Gerber	044 695 0105	082 454 0934	charlesjnr@transand.net
Trax Global	JHB		Steve	082 954 6253		steve@traxglobal.co.za
Trax Global	CPT		Eddie	082 697 0534		parts@traxglobal.co.za
Trax Global	CPT		Bev	083 505 8955		bev@traxglobal.co.za
Trysome cc	JHB	Supplies	Jaco	(011)823 5650		jaco.vandermerwe@trysome.cc
TTC Engineering & Hydraulics	JHB		Owner Tino	011 845 2837	082 822 4676	tino@ttcenghyd.co.za
TTC Engineering & Hydraulics	JHB		Admin Chanel	011 845 2837		admin@ttcenghyd.co.za
Turboworks	Centurian	Sales		012 653 7507	082 824 8037	sales@turboworks.co.za
Turbo Direct	Isando	Sales		011 392 5195		
Unity	JHB	Sales		011 845 1630	082 457 0221	unitysalesandservices@gmail.com
VR Diesel & Turbo			Wayne	013 246 1003	083 310 9235	wayne@vrdiesel.net
Vendal Civils	JHB		Anton	011 801 4911/2	082 923 5397	vendels@mweb.co.za
Vendel Equipment Sales	JHB	Sales	Jaap	011 801 4911/2	082 892 1327	associated1@xnet.co.za
Vita Plant & Equipment	Brits	Machine Sales & Repairs	Costa Voyiatzakis	012 252 2915	082 521 7095	nicholas@vitaplant.co.za
Vortex transmissions	JHB		Johan	011 452 4430	082 333 1005	vortex@mweb.co.za
Vortex transmissions	JHB		Jan	011 452 4430	082 333 1004	vortex@mweb.co.za
WH Auctioneers	Midrand	Sales	Shannon	011 574 5700	084 520 5000	info@whauctions.com
WH Auctioneers	Midrand	Sales	Mathew	011 574 5700	084 252 5000	info@whauctions.com
WH Auctioneers	Midrand	Sales	Tim	011 574 5700	082 371 1069	info@whauctions.com
WAHA Equipment	Midrand	Sales	Will	011 574 5728	076 037 9516	will@waha.co.za
Wearpack	JHB	Sales	Linda	011 845 3234	083 453 3960	mwwrp@mweb.co.za
Weichai	JHB	Parts	Barry Fang		072 399 9817	bm@semrsa.co.za
WesTrac	AUS		Ron Lanzon	+61 418 927 625		Ronald.Lanzon@westrac.com.au
Wilson Plant	CPT	Sales	Miles Wilson	021 534 9536	082 928 9215	admin@wilsonplant.co.za
Yellow Metal SA	Pretoria	Sales	Pieter Botha	011 970 1299	082 805 8220	sales@ymrsa.co.za
ZF Services South Africa	JHB	Sales: Service Parts	Warren Viviers	(011)457 0031	082 776 2759	warren.viviers@zf.com
ZF Services South Africa	JHB	Workshop:Off-road division	Christo Uys	(011)457 0091		christo.uys@zf.com

Want Your company listed in our Quick Reference Guide? Please email your company details to janine@earthbroker.co.za





WEICHAI

PRODUCT SUPPORT AT ITS BEST



A Caterpillar Brand

PRODUCT SUPPORT AT ITS BEST



RENT TO OWN OPTIONS AVAILABLE



FAW Q8 Oils



POWERSTAR

trucks built to last



KRAGHOND

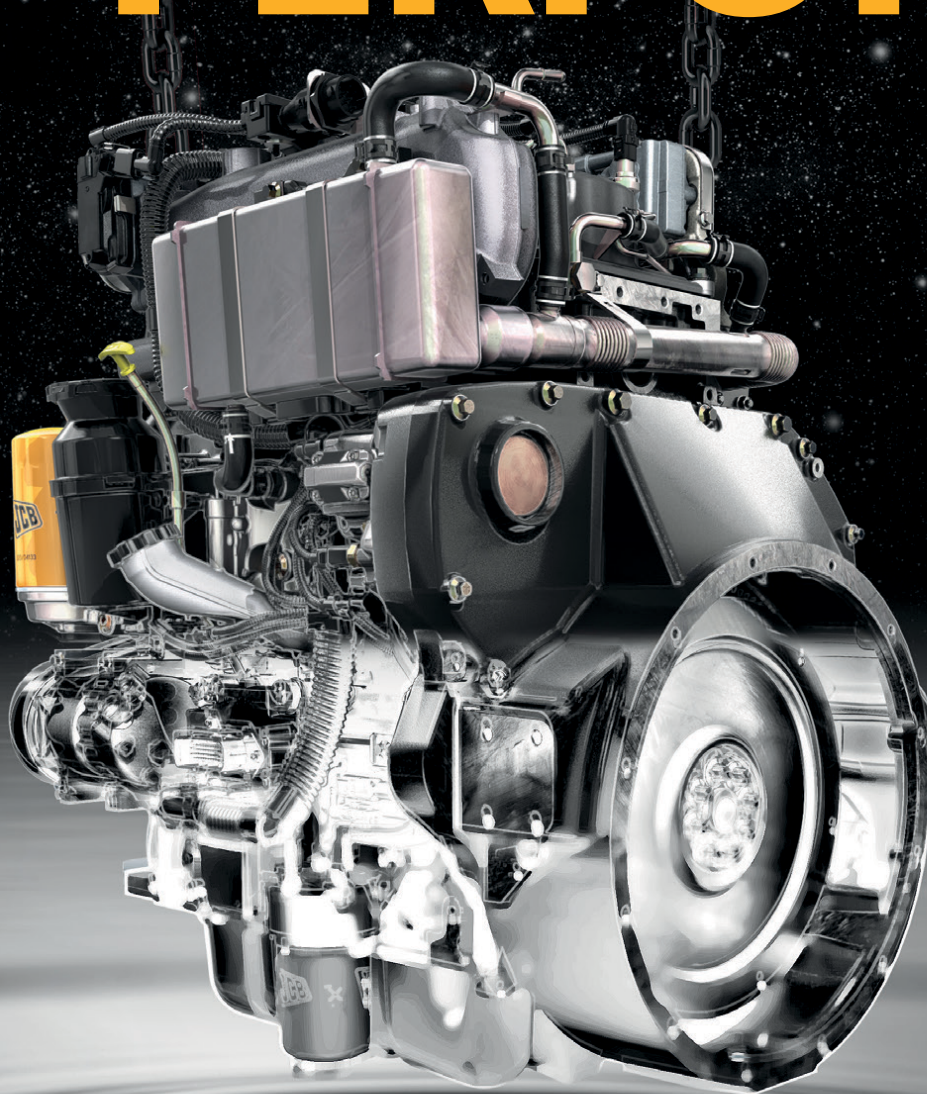


14 Buwbes Rd, Sebenza

Barry - 072 399 9817

bm@semrsa.co.za

REBORN TO PERFORM



Get a range of re-manufactured components with the same performance and warranty 'as new' for peace of mind at a fraction of the cost.

BELL
South Africa

Proudly selling
& supporting

JCB

Email: reman@bellequipment.com • www.bellequipment.com • FOLLOW US ON    