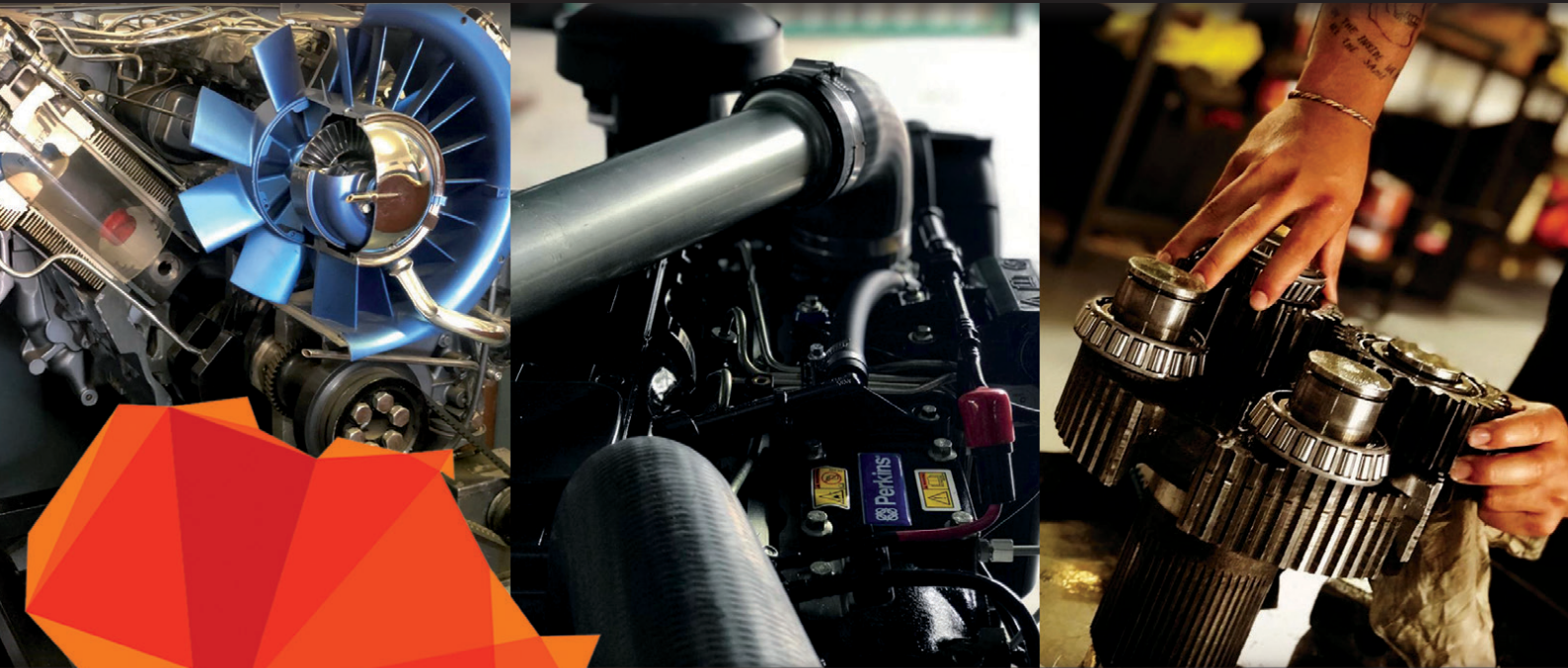


your sourcing solution for new & used equipment & machinery

# earthbroker

email: [janine@earthbroker.co.za](mailto:janine@earthbroker.co.za) web: [www.earthbroker.co.za](http://www.earthbroker.co.za)

volume 17 | issue 10 October 2021



## All Africa Supplies

GLOBAL REACH - LOCAL SUPPLY

[sales@allafricasupplies.net](mailto:sales@allafricasupplies.net) | [www.allafricasupplies.net](http://www.allafricasupplies.net)

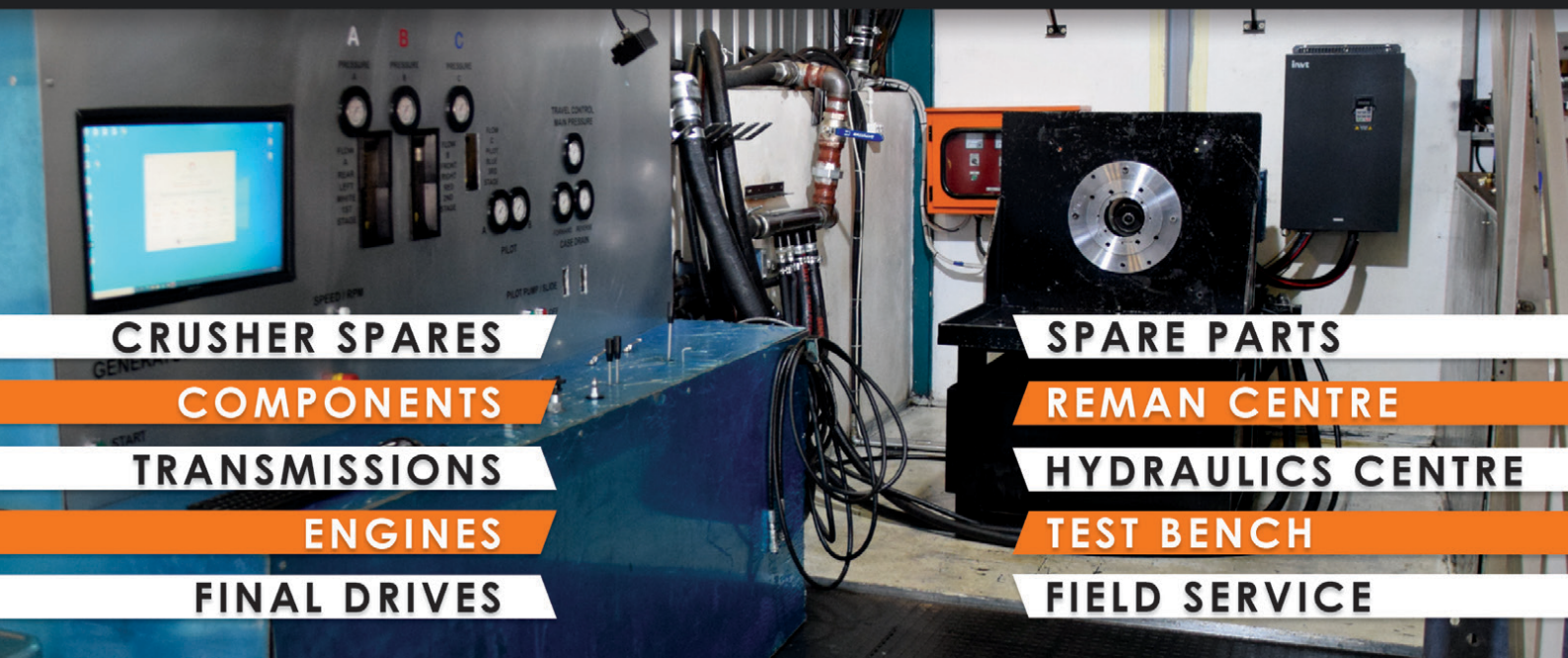
011 918 9976

## Leading Earthmoving Parts & Components Supplier

Follow us on Social Media

- [facebook.com/allafricasupplies](https://facebook.com/allafricasupplies)
- [google.com/+AllafricasuppliesCoZa](https://google.com/+AllafricasuppliesCoZa)
- [facebook.com/allafricasupplies](https://facebook.com/allafricasupplies)

\*All manufacturers names, numbers, symbols and pictures are for reference only. It does not imply that any of the parts are the product of these manufacturers.



CRUSHER SPARES

COMPONENTS

TRANSMISSIONS

ENGINES

FINAL DRIVES

SPARE PARTS

REMAN CENTRE

HYDRAULICS CENTRE

TEST BENCH

FIELD SERVICE





**Scott : +27 10 500 2167**

[scott@prearthmoving.com](mailto:scott@prearthmoving.com)

[www.prearthmoving.com](http://www.prearthmoving.com)

**YOUR EARTHMOVING COMPONENT SPECIALIST**

No. 170 - 3rd Avenue, Bredell  
Kempton Park, 1619.  
South Africa

ATTACHMENTS • AXLES • BREAK GROUPS • CYLINDERS • ENGINES • FINAL DRIVES • G.E.T. • HYDRAULIC PUMPS • NEW PARTS • POWER TRAINS • TRANSMISSIONS • UNDERCARRIAGE



**CAT R1600G**  
Transmission



**KOMATSU PC3000**  
Pump and Drive



**CAT 789D**  
Transmission



**CATERPILLAR D9T**  
Crawler Dozer  
Stripping for Spares



**KOMATSU PC3000-6**  
Dismantling for Spares  
All components available



**KOMATSU HD785-7**  
Stripping



**KOMATSU WA800-3**  
Wheel Loader  
Stripping for spares



**KOMATSU HD785-5**  
Stripping for Spares



**CAT 777F**  
Good used Wheel Station



**KOMATSU 730E**  
Good used Front corners



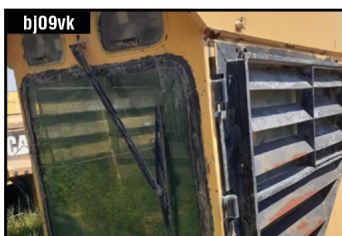
**CATERPILLAR C9**  
Industrial Engine



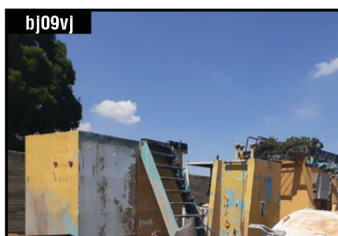
**CATERPILLAR C27**  
Engine for CAT D10T  
- Rebuilt -



**CATERPILLAR**  
R1600 Axle



**KOMATSU PC8000**  
CAB



**KOMATSU PC8000**  
Cooling Pack



**KOMATSU PC8000**  
Rollers



**Kyle Silvestre**  
+27 10 823 6385  
[sales@prearthmoving.com](mailto:sales@prearthmoving.com)



**Ladislav Mutondo**  
+27 10 823 7322  
[ladislav.l@prearthmoving.com](mailto:ladislav.l@prearthmoving.com)



**Greg Gavazzi**  
+27 10 823 6276  
[greg@prearthmoving.com](mailto:greg@prearthmoving.com)



**Conrad Snyman**  
+27 10 823 7972  
[conrad@prearthmoving.com](mailto:conrad@prearthmoving.com)



**Rikus Esterhuizen**  
+27 10 823 6857  
[rikus@prearthmoving.com](mailto:rikus@prearthmoving.com)



## Contact Details

Sales Manager & Editor  
**Janine Sargeant**  
083 456 4027

Design / Layout  
**Dylan McDonald**  
082 485 3001

Sales Contact  
083 456 4027

Electronic Origination & Printing  
ROC Media

The Editors welcome articles and photographs, which will be considered for publication on their merit.

**Disclaimer:** The Editors and Publisher do not necessarily endorse any views or statements made by contributors.

**Janine Sargeant**  
083 456 4027  
(FAX) 086 685 1258  
janine@earthbroker.co.za

**Physical Address:**  
Suite 16, Hillcrest Office park  
2 Old Main Road, Hillcrest, 3610

**Postal Address:**  
P.O. Box 2484,  
Hillcrest,  
3650

**Banking Details:**  
Earthbroker  
First National Bank  
Hillcrest  
Code: 223726  
Account No.: 62295649308



Audit Bureau of Circulations  
of South Africa

**We are ABC accredited**

**Pamms Certificate no:**  
2A8DD9F60574FFC2A4EEEE01A



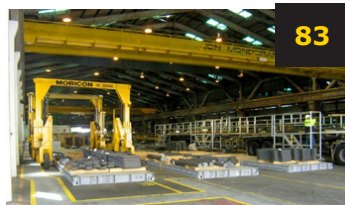
Manufacturer's names, numbers & descriptions are used for reference purposes only & it is not implied that any part listed is the product of the manufacturers.



73

### Aspasa

Rooting out price fixing in mining and construction



83

### BLT WORLD

Mobicon container handlers are used for safe and efficient materials handling in the steel sector



29

### Massey Ferguson

Vriendschap Boerdery standardises on Massey Ferguson tractors from FMS for its sugarcane operations



85

### MWS Equipment

MWS Equipment announces USA partner



82

### MHS Plant & Equipment

Green shoots in mining industry threatened by global shortage of large equipment



84

### Shumani

Shumani looks to diversify into mining, construction industry

## Contents

<b>Advertisers Index</b>	<b>92-93</b>	<b>Marsay Equipment</b>	<b>72</b>
<b>All Africa Supplies</b>	<b>1,44-45</b>	<b>McKenzie Plant Sales</b>	<b>34</b>
<b>AmPlant</b>	<b>36</b>	<b>Mid Plant Services</b>	<b>41</b>
<b>Associated Equipment</b>	<b>48-49</b>	<b>Mzantsi Transmissions</b>	<b>34</b>
<b>Atlas Masjiene</b>	<b>11</b>	<b>New Beginning Designs</b>	<b>6</b>
<b>Bell Equipment</b>	<b>17,100</b>	<b>One Stop Procurement</b>	<b>35</b>
<b>BLC Plant</b>	<b>50</b>	<b>P &amp; R Earthmoving</b>	<b>2</b>
<b>BLC Trucks</b>	<b>51</b>	<b>Paramount Tracks &amp; Equipment</b>	<b>54</b>
<b>BLC Parts &amp; Components</b>	<b>52</b>	<b>Phemba Equipment</b>	<b>16</b>
<b>Blumaq South Africa</b>	<b>18-19</b>	<b>Plant Finder</b>	<b>46-47</b>
<b>Bulk Machine Hire</b>	<b>12</b>	<b>Power Transmission Technology</b>	<b>57</b>
<b>C&amp;J Earthmoving Repairs</b>	<b>5</b>	<b>Prime Plant</b>	<b>64</b>
<b>Cat ER</b>	<b>16</b>	<b>RC Investments</b>	<b>36</b>
<b>Centrax</b>	<b>14-15</b>	<b>Rhino Excavator Hammers</b>	<b>13</b>
<b>Changlin</b>	<b>36</b>	<b>Rocktech</b>	<b>78</b>
<b>CTC Plant Company (PTY) Ltd</b>	<b>58</b>	<b>Ruspet Exhausts</b>	<b>24</b>
<b>Dozer Parts</b>	<b>20-21</b>	<b>Safety Grip</b>	<b>77</b>
<b>Dura Equipment Sales</b>	<b>23</b>	<b>Shin Li Trading</b>	<b>66-67</b>
<b>Dura Parts</b>	<b>25</b>	<b>Sintech</b>	<b>55</b>
<b>Earthmoving Machine Sales</b>	<b>80-81</b>	<b>Spec-Cast Engineering</b>	<b>22</b>
<b>Earth Mach</b>	<b>42</b>	<b>Spec-Cast Wear Parts</b>	<b>26-28</b>
<b>East Coast Gears</b>	<b>36</b>	<b>STM Mining</b>	<b>10,62-63</b>
<b>ESP</b>	<b>30-33</b>	<b>Tractor Grader Supplies</b>	<b>38-39</b>
<b>Filter Centre</b>	<b>24</b>	<b>Transand</b>	<b>53</b>
<b>Gears for Africa</b>	<b>65</b>	<b>The Seat Connection</b>	<b>22</b>
<b>Industrial Plant Solutions</b>	<b>79</b>	<b>Turboworks</b>	<b>56</b>
<b>ITR Africa</b>	<b>8-9</b>	<b>Turbo Direct</b>	<b>43</b>
<b>Inmine - Inala Mining Services</b>	<b>60-61</b>	<b>Vortex Transmissions</b>	<b>59</b>
<b>Liugong-Burgers</b>	<b>7</b>	<b>Weichai &amp; SEM Parts</b>	<b>99</b>
<b>LNE Agri Earth (Pty) Ltd</b>	<b>40</b>	<b>Wearpact</b>	<b>4</b>
<b>MAE Equipment</b>	<b>37</b>	<b>Machine Classifieds</b>	<b>88-91</b>
<b>Manitou Southern Africa</b>	<b>76</b>	<b>Quick Reference</b>	<b>95-98</b>





**ELEVATE YOUR  
POTENTIAL  
WITH  
WEARPACT**

## **MANUFACTURERS, SUPPLIERS AND STOCKISTS OF:**

**CUTTING EDGES | MOLD BOARD LINERS | GRADE BLADES  
TIPS AND ADAPTORS | RIPPER SHANKS | END BITS**

**WE MANUFACTURE, SUPPLY AND STOCK G.E.T. FOR:**

**CAT | KOMATSU | VOLVO | HITACHI | BELL | LIEBHERR | JCB | CASE  
TEREX | FURUKAWA | LIUGONG | SANY | SANYO | SHANTUI | FIAT**

**WEARPACT ALSO OFFERS A SPECIALIST BUCKET REPAIR SERVICE**

# **WEARPACT**

☎ **011 421 4705 / 011 845 3234 / 011 845 3272**

☎ **011 421 8761**

✉ **[mwwrp@mweb.co.za](mailto:mwwrp@mweb.co.za)**

\*MANUFACTURER'S NAMES, NUMBERS & DESCRIPTIONS ARE USED FOR REFERENCE PURPOSES ONLY. IT IS NOT IMPLIED THAT ANY PART LISTED IS THE PRODUCT OF THE MANUFACTURERS.

**[www.wearpact.co.za](http://www.wearpact.co.za)**



# Specialising in CAT & Allison Transmissions



**We repair all Earthmoving Components  
& Manual Truck Gearboxes**



**EARTH MOVING REPAIRS PTY LTD**

## **C And J Earthmoving Repairs**

No. 6 Venda Street  
Sebenza, Edenvale  
Tel: 011 025 9336  
Cell: 079 888 6071  
Email: [mikecjearth@gmail.com](mailto:mikecjearth@gmail.com)

**We offer repairs to earthmoving machines and all components  
e.g. transmissions, engines, diffs, axles, tandems and more.  
We specialize in CAT. Other brands include Perkins, Deutz, Allison and more.  
Hydraulic and dyno testing services are also available.**



**Servicing all Major Brands**



**CLARK**



**HITACHI**



## Our Integrated Approach

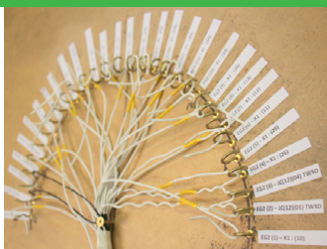
Transmission Rebuilds



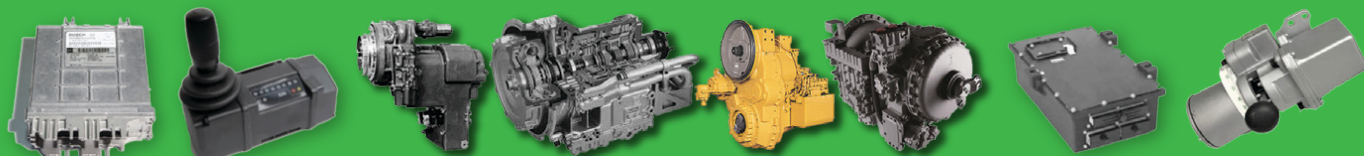
Electronics Laboratory



Wiring Harness Workshop



Vehicle Repairs



New Beginnings Designs rebuilds off highway automatic transmissions and repairs transmission control units and gear selectors.

Visit our website for more info: [www.nbdesigns.co.za](http://www.nbdesigns.co.za)



### We specialise in:

- Transmission overhauls & repairs: Allison, Caterpillar, Clark, Komatsu & ZF
- Ecu & gear selector repairs & design
- Wiring harness repairs & manufacturing
- Dynamometer design & manufacture
- Off-highway vehicle rebuilds & repairs. (Mechanical & electronic)
- Service Exchange
- Transmissions in stock!



@newbeginningsdesigns



@nbdesigns.sa

### CONTACT US

Phone: +27 11 791 4120

Email: [suken@nbdesigns.co.za](mailto:suken@nbdesigns.co.za)

Address: 1146 Minnie Postma Avenue, Florida 1709







**TOGETHER WE  
DEFINE TOMORROW**



**BURGERS**  
Equipment and Spares

**Johannesburg Head Office**

**Tel: +27 11 979 3636**

**Email: [salesadmin@liugong.co.za](mailto:salesadmin@liugong.co.za)**

**[www.liugong.co.za](http://www.liugong.co.za)**

**TOUGH WORLD. TOUGH EQUIPMENT.**





**Johannesburg**  
t: +27 (11) 614 0070  
sales@itrafrica.com

**Cape Town**  
t: +27 (21) 905 7340  
capetown@itrafrica.com

**Port Elizabeth**  
t: +27 (41) 451 2222  
portelizabeth@itrafrica.com

**East London**  
t: +27 (43) 748 3541  
eastlondon@itrafrica.com

### **TWISTER**

COMPATIBLE WITH  
ESCO SUPER V®



### **T2**

COMPATIBLE WITH  
ESCO SV2®



### **X2**

COMPATIBLE WITH  
HENSLEY XS®



### **miner**

MINER 950, 1100, 1300 & 1450  
SOLID TEETH & ADAPTERS  
COMPATIBLE WITH  
ESCO POSILOK®  
SIZES 95 TO 145



The FUTURA Wear Technology Premium range is designed for cable shovels, draglines, hydraulic face shovels and mining excavators up to 800 tons.

The main features are its hammerless solutions that increase safety and reduce downtime, its proven performance with extra weight invested in reinforcing the key areas of the tooth where it has more exposure to wear, and its design with lateral and central ribs contributing to facilitate the flow of material, significantly extending the life while retaining its self-sharpening properties.

### **miner**

MINER 1100, 1300 & 1450  
TEETH & INTERMEDIATE  
ADAPTERS  
COMPATIBLE WITH  
ESCO POSILOK®  
SIZES 110 TO 145



CAST LIPS AND A FULL RANGE OF  
BUCKET PROTECTION AVAILABLE

Manufacturer's names, numbers & descriptions are used for reference purposes only & it is not implied that any part listed is the products of the manufacturers





#### **Pinetown**

**t: +27 (31) 941 1133**

[pinetown@itrafrica.com](mailto:pinetown@itrafrica.com)

#### **Middelburg**

**t: +27 (13) 590 5614**

[middelburg@itrafrica.com](mailto:middelburg@itrafrica.com)

#### **Bloemfontein**

**t: +27 (51) 011 5620**

[bloemfontein@itrafrica.com](mailto:bloemfontein@itrafrica.com)

#### **Kathu**

**t: +27 (53) 723 2245**

[kathu@itrafrica.com](mailto:kathu@itrafrica.com)

#### **Namibia**

**t: +264 (83) 331 5160**

[namibia@itrafrica.com](mailto:namibia@itrafrica.com)

#### **Zambia**

**t: +260 (96) 351 3429**

[zambia@itrafrica.com](mailto:zambia@itrafrica.com)

## **A WORLDWIDE LEADER IN AFTERMARKET EARTHMOVING PARTS AND SOLUTIONS**

Undercarriage

Repair Parts

Ground Engaging Tools

Lubricants

Track Frames

Undercarriage Workshops

Field Service & Measuring



## GOOD USED EARTHMOVING PARTS AND EQUIPMENT

# STM

**MINING EQUIPMENT PTY(LTD)**

Tel: (011)894-6192 / (011)894-3377

Fax: (011)894 7914

[barney@stmmining.co.za](mailto:barney@stmmining.co.za)

[donovan@stmmining.co.za](mailto:donovan@stmmining.co.za)

Office Hrs: Mon-Fri 07h00-17h00

### OUR PRODUCTS & SERVICES

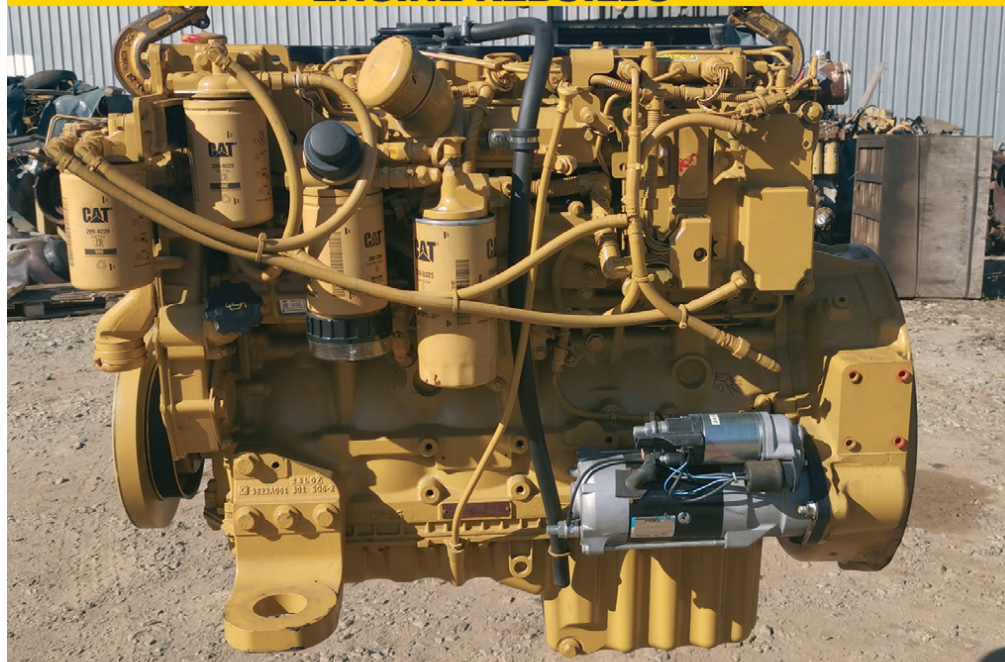
We supply second hand machines and good used parts for most makes of Earthmoving Equipment ie: Cat, Komatsu.

We buy second hand machines to strip for components and parts, dead or alive to keep in stock for customers.

We have a repair shop where we do components and Repair machines for Customers.



### ENGINE REBUILDS



### MACHINE REBUILDS



**Before**



**After**

**[www.stmmining.co.za](http://www.stmmining.co.za)**

PO Box 6456, Dunswart 1508, 40 Michelson RD. Westwood, Boksburg





# ATLAS

## MASJIENE

Corner of Great North & Stanley Road, Brentwood Park AH, Johannesburg  
Dewald Hattingh: +27(0) 72 547 2198 | +27(0) 11 973 3737



**VOLVO A20C**  
R350 000,00 + VAT



**CATERPILLAR 924G**  
R550 000,00 + VAT



**CATERPILLAR 320D**  
R950 000,00 + VAT



**CATERPILLAR 140G's**  
FROM R950 000,00 + VAT



**CATERPILLAR 428C**  
R300 000,00 + VAT



**CATERPILLAR 769**  
R750 000,00 + VAT



**CATERPILLAR 320C**  
R670 000,00 + VAT



**CATERPILLAR 120G**  
R550 000,00 + VAT



**CATERPILLAR 16H**  
R2 500 000,00 + VAT



**CATERPILLAR 277B**  
R350 000,00 + VAT



**CATERPILLAR 325D**  
R1 300 000,00 + VAT



**BOMAG BW212**  
R300 000,00 + VAT



**CATERPILLAR 140H**  
R1 500 000,00 + VAT



**HITACHI EX75**  
R250 000,00 + VAT



**CATERPILLAR 330D**  
R1 500 000,00 + VAT



**BELL 1906 WITH FORKS**  
R320 000,00 + VAT

[ATLASMASJIENE.CO.ZA](http://ATLASMASJIENE.CO.ZA) | [INFO@ATLASMASJIENE.CO.ZA](mailto:INFO@ATLASMASJIENE.CO.ZA)





**1 x MERCEDES BENZ ATEGO 1517 – 8000L DIESEL BOWSER**  
Year Model: 2000  
KM Reading: 48232

**BMH IS OFFERING THE FOLLOWING EQUIPMENT FOR SALE. ALL EQUIPMENT WAS PURCHASED NEW FROM THE RELEVANT O.E.M.**

**COMPLETE REPAIR AND MAINTENANCE HISTORY AVAILABLE UPON REQUEST.**



**1 x BELL 850J DOZER**  
Year Model: 2018  
Hours (SMR): 6112



**1 x HITACHI ZX470LC-5G HYDRAULIC EXCAVATOR**  
Year Model: 2013  
Hours (SMR): 13563



**1 x HITACHI ZX400LCH-5G HYDRAULIC EXCAVATOR**  
Year Model: 2016  
Hours (SMR): 14 949



**2 x HITACHI ZX330LC-5G HYDRAULIC EXCAVATORS**  
Year Model: 2017  
Hours (SMR): 9 173 & 15 539



**6 x BELL B30D ARTICULATED DUMP TRUCKS**  
Year Model: 2008 - 2013 / Hours (SMR): Between 10 000 – 25 000 hours

Prices available on request.  
Viewing of equipment can be arranged.

Contact Person:  
Karen van Zyl – 011 964 1179 / [info@bulkmachine.co.za](mailto:info@bulkmachine.co.za)







# RHINO

Earthmovers  
Excavator Hammers





SALES & RENTALS OF  
EXCAVATORS & TLB'S  
WITH ATTACHMENTS.





**HEAD OFFICE**  
074 922 2382

**RENTALS**  
082 887 8636

**SALES**  
071 670 8707



#### BREAKING FOR SPARES

- CAT 330D
- CAT 320D
- KOMATSU PC400

#### MACHINES FOR SALE

- CAT 307 PIPED
- CAT 312 PIPED
- CAT 931 TRUCK LOADER
- CAT 320D & 330D PIPED
- JCB JS200 & JS205 PIPED
- VARIOUS SIZE EXCAVATOR

#### ENGINES FOR SALE

- CAT 3306
- CAT 3052
- CAT 3064
- CAT C7
- KOMATSU 60125 (375-5)
- ISUZU 6HK1 (HITACHI)

#### **FOR ONSITE AIRCON REPAIRS**

**CONTACT DAVE: 083 600 3308**

[sales@rhinohammers.co.za](mailto:sales@rhinohammers.co.za) | [hire@phplant.co.za](mailto:hire@phplant.co.za) | [cjago@global.co.za](mailto:cjago@global.co.za)

[www.rhinohammers.co.za](http://www.rhinohammers.co.za) | [www.phplant.co.za](http://www.phplant.co.za)





ON THE RIGHT  
TRACK WITH

# CENTRAX

Since 1974

[www.centraxsa.com](http://www.centraxsa.com)

**CENTRAX WELCOMES  
PATRICK MCKINON TO THE TEAM**



Patrick Mckinon

8 Grader Road, Spartan Ext3

# “LET’S DO THIS”



## “YOU CAN WITH CENTRAX”

**EXPERTS IN UNDERCARRIAGE  
& WEAR PARTS**

**Head Office**

Tel: (011) 392 5055 / (011) 392 5056 / Fax: (011) 392 3091

**Durban Branch**

Tel: 086 123 6872 / Cell: 083 613 0664 / Email: [centraxkzn@telkomsa.net](mailto:centraxkzn@telkomsa.net)

**[www.centraxsa.com](http://www.centraxsa.com)**

Manufacturers names, numbers and descriptions are used for reference purposes only & is not implied that any parts listed is the product of these manufacturers.





**ON THE RIGHT  
TRACK WITH**

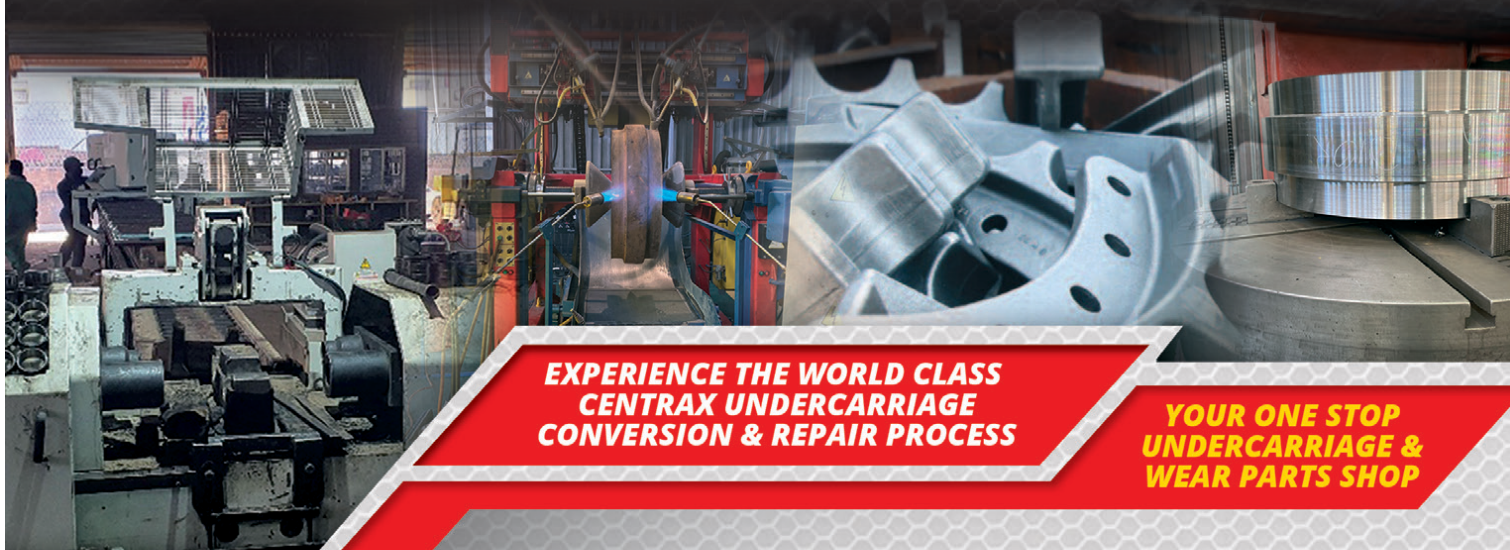
# **CEN TRAX**

Since 1974

[www.centraxsa.com](http://www.centraxsa.com)

**Head Office:** Tel: (011) 392 5055 / (011) 392 5056 / Fax: (011) 392 3091  
**Durban Branch:** Tel: 086 123 6872 / Fax: 086 529 4683 / **Steve:** 083 613 0664

## **EXPERTS IN UNDERCARRIAGE & WEAR PARTS**



**EXPERIENCE THE WORLD CLASS  
CENTRAX UNDERCARRIAGE  
CONVERSION & REPAIR PROCESS**

**YOUR ONE STOP  
UNDERCARRIAGE &  
WEAR PARTS SHOP**

- **IDLER REBUILD FACILITY**
- **TRACK WORKSHOP**
- **UNDERCARRIAGE**
- **GROUND ENGAGING TOOLS**



Manufacturers names, numbers and descriptions are used for reference purposes only & is not implied that any parts listed is the product of these manufacturers.





Phemba Equipment

116 Bayley Street Farrarmere Benoni 1501  
Siya@phembaequipment.com  
Office: 087 945 5432 | Fax: 087 945 5433 | Cell: 060 526 5432



**AARD 5.5 LHD**  
Rebuild with 0 hrs  
@ **R2.7Mil** Ready to work



**3 x SANDVIK EJC 115**  
Rebuild with 0 hrs ready to  
work @ **R850K** each



**SANDVIK TORO 10**  
Rebuild, ready to work with 2000 hrs  
@ **R2.1 Mil**



**1 x 2016 RESIMIN RAPTOR 55XP** / Longhaul drill with only 320 hrs / **R2.8Mil** Excl. VAT  
**1 x 2016 RESIMIN RAPTOR 55XP** / Longhaul drill with only 1675 hrs / **R2.2Mil** Excl. VAT

[www.phembaequipment.com](http://www.phembaequipment.com)

## Earthmoving Specialist

Old & New  
Generation Experience



**WE SPECIALIZE IN CUMMINS ENGINES**

Full Diagnostic  
Troubleshooting

**REPAIRS, SPARES  
& MAINTENANCE TO  
LEADING EARTHMOVING  
MACHINERY**

Carlos Caroto: 079 519 6769 | Email: [jennycaroto@live.co.za](mailto:jennycaroto@live.co.za)

## Earthmoving Specialist



**OLD & NEW  
GENERATION EXPERIENCE**



**FULL DIAGNOSTIC TROUBLESHOOTING**

**REPAIRS, SPARES & MAINTENANCE TO  
LEADING EARTHMOVING MACHINERY**

**SPECIALISING IN: CAT ECPC, ICM COUNTERSHIFT  
& POWERSHIFT TRANSMISSION REBUILDING**

Carlos Caroto: 079 519 6769 | Email: [jennycaroto@live.co.za](mailto:jennycaroto@live.co.za)



# PRIME -6.9%\*

## AVAILABLE ON THE JCB 3DX Plus

FINANCE OFFER available over 36 months, 20% deposit & valid until 30 September 2021.\*

**HUGE  
SAVINGS**



\*Terms & conditions apply.

**BELL**  
South Africa

Proudly selling  
& supporting

**JCB**

Email: [jcb sales@bellequipment.com](mailto:jcb sales@bellequipment.com) • Telephone: 011 928 9700 • [www.bellequipment.com](http://www.bellequipment.com)





[www.blumaq.com](http://www.blumaq.com)

Follow us on:



Following our success as **Berco** product distributor in Zambia, Blumaq South Africa has now also been appointed a distributor for this quality product in South Africa.

Blumaq South Africa now also offers **Berco quality undercarriage parts and repairs** from our operation based in Wadeville, Johannesburg.

Our fully serviced Track Undercarriage workshops offers a full service including Turning of Pins & Bushes / Re-stripping of Grouser shoes / Track Link repairs / Idler and Roller rebuilds / Track Frame Rebuilds.

Contact us today for a free on site wear assessment of your undercarriage components.

#### Contact:

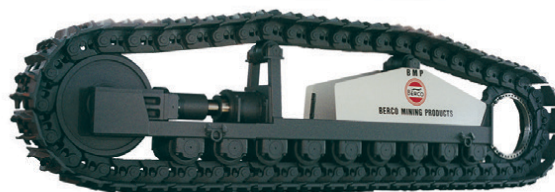
+27 11 966 5092 **Johannesburg**

+26 096 0923 962 **Kitwe**

+264 81 291 7539 **Windhoek**

[john.beukes@blumaq.com](mailto:john.beukes@blumaq.com)

**Berco dealer in  
Spain, Zambia,  
Turkey and  
South Africa:**



**Branches in Spain:** Alicante | Almería | Asturias | Barcelona | Galicia | Madrid | Mérida | Ponferrada | Sevilla | Tenerife | Zaragoza  
**Branches in the world:** Chile | United States | France | Portugal | Turkey | China | Russia | Italy | Romania | South Africa | Zambia | Peru | Kazakhstan | Namibia





[www.blumaq.com](http://www.blumaq.com)

Follow us on:



## Spare parts suitable for VOLVO

We offer a wide range of items  
with immediate delivery for your  
**VOLVO** earthmoving equipment.



## Alternative spare parts for Caterpillar

We offer a wide range of items  
with immediate delivery for your  
**CATERPILLAR** earthmoving equipment.



### Contact:

+27 11 966 5092 **Johannesburg**  
+26 096 0923 962 **Kitwe**  
+264 81 291 7539 **Windhoek**  
[john.beukes@blumaq.com](mailto:john.beukes@blumaq.com)

**Berco dealer in  
Spain, Zambia,  
Turkey and  
South Africa:**



**Branches in Spain:** Alicante | Almería | Asturias | Barcelona | Galicia | Madrid | Mérida | Ponferrada | Sevilla | Tenerife | Zaragoza  
**Branches in the world:** Chile | United States | France | Portugal | Turkey | China | Russia | Italy | Romania | South Africa | Zambia |  
Peru | Kazakhstan | Namibia



# DOZER

## EARTHMOVING

T +27(0)11 452-1224 Danie +27(0)1182 441-2895 / Greg +27(0)11 71 683-6012

21 Simba Street, Sebenza, Edenvale, Johannesburg, Gauteng, South Africa

### MACHINES BEING STRIPPED FOR PARTS

#### CATERPILLAR

- 725, 730, 740 ADT's
- 777D/F Dump Truck
- 785D Dump Truck
- 988G/H Wheel Loader
- 992G Wheel Loader
- D11R/T Dozer

#### LIEBHERR

- R984 Excavator
- R9100 Excavator
- R9350 Excavator

#### KOMATSU

- HD785 - 5
- WD600 - 3



**CAT 725**  
Service Truck For Sale



**2 x CAT 773E**  
Dump Trucks For Sale



**CAT 834K**  
Wheel Dozer For Sale



**CAT 962H**  
Wheel Loader For Sale



**CAT 769D**  
Water Tanker For Sale



**CAT 824G Series 2**  
Wheel Dozer For Sale



**CAT 988G 3456**  
Engine Assembly For Sale



**CAT 992G 3508**  
Engine Assembly For Sale



**CAT 773D/E**  
Final Drives For Sale



**CAT 777F**  
Final Drives For Sale (Exchange)



**CAT 992G/K**  
Final Drive Groups For Sale



**CAT D11R/T**  
Final Drives For Sale





+27(0)172 338 2196

E [info@dozer.co.za](mailto:info@dozer.co.za)

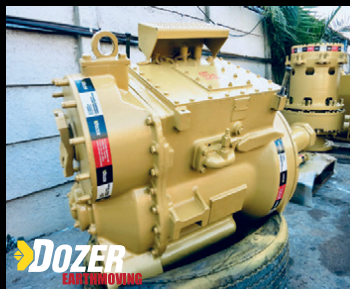
W [www.dozer.co.za](http://www.dozer.co.za)



[www.instagram.com/dozerearth](https://www.instagram.com/dozerearth)



[www.facebook.com/dozerparts](https://www.facebook.com/dozerparts)



**CAT 773D/E**  
Transmission Group For Sale



**CAT 777F**  
Transmission Gp For Sale (Exchange)



**CAT D9T**  
Transmission Group For Sale



**CAT D11R/T**  
Transmission Group For Sale



**CAT 725/730**  
Final Drives For Sale



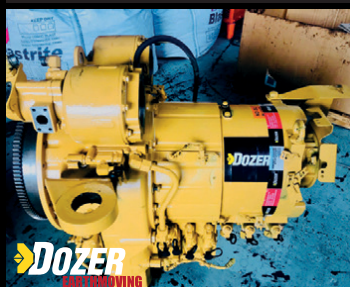
**CAT 740**  
Final Drives For Sale



**CAT 725/730**  
Differential Groups For Sale



**CAT 740**  
Differential Group For Sale



**CAT 725/730**  
Transmission Group For Sale



**CAT 740**  
Transmission Group For Sale



**CAT 725/730**  
Cabin Group For Sale



**CAT 740**  
Cabin Group For Sale



**CAT 740**  
Diesel Tank For Sale



**CAT 777D/F**  
Bowl Assembly For Sale



**CAT 988G**  
Bucket Group For Sale



**CAT 992G**  
Bucket Group For Sale



**Liebherr 9350**  
Splitter Box For Sale



**Liebherr 9350**  
Swing Gear For Sale



**Liebherr 9350**  
Cylinders For Sale



**Liebherr 9350**  
Bucket Group For Sale





SPEC-CAST ENGINEERING

*Trusted to deliver*

# Bulk Materials Handling Products

## Bucket Elevators



### Steel Buckets

Suitable for elevating sharp, bulk density materials



### HDPE Buckets

Suitable for handling large volumes of all types of grains, feed and most food products



### Nylon Buckets

Suitable for high impact & abrasion resistance. Better heat resistance and handling hot, abrasive and sticky materials

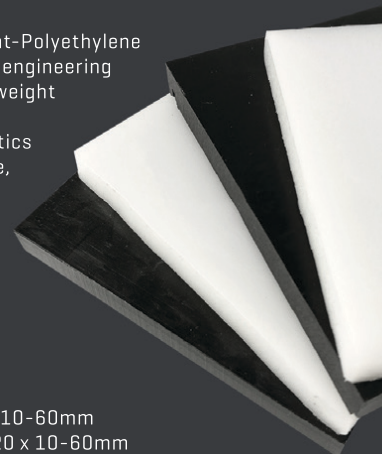
## HDPE & UHMWPE Sheets

Ultra-High-Molecular-Weight-Polyethylene (UHMWPE) is thermoplastic engineering material, and its molecular weight can reach 4.5 to 9 million. It combines many characteristics such as abrasion-resistance, impact resistance/absorption, chemical corrosion resistance, low temperature resistance and self-lubrication etc.

Available in Black or White

**HDPE SHEET:** 2000 x 1000 x 10-60mm

**UHMWPE SHEET:** 3080 x 1220 x 10-60mm



Contact our Bulk Materials Handling Specialist: Brian Jansen  
Cell: +27 71 147 6868 | Email: [brianj@spec-cast.co.za](mailto:brianj@spec-cast.co.za) | Tel: +27 11 396 1713/7 | [www.spec-cast.co.za](http://www.spec-cast.co.za)

## Seats for safety and strength

The Seat Connection has been a regular and frequent supplier of mining seats for some 30 years.

We have a fully equipped workshop and professionally trained team to assemble new seats and repair or restore used seats.

Developed for strength, our THESCO Mining Seats with their compact EU approved suspensions are ideal for limited space environments and harsh conditions.



THESCO SEAT II



THESCO SEAT III



THESCO SEAT IV



TheSeatConnection



+27 11 452 6802



[info@seatconnection.co.za](mailto:info@seatconnection.co.za)



[www.seatconnection.co.za](http://www.seatconnection.co.za)

**The seat  
CONNECTION**



**DURA**  
EQUIPMENT  
**SALES**

**AFFORDABLE** ✓ **RELIABLE** ✓ **TRUSTED** ✓

**WWW.DURASALES.CO.ZA**



✓ **NEW LOVOL FR510E2-HD**  
LOVOL WARRANTY



✓ **NEW LOVOL FR330D**  
LOVOL WARRANTY



✓ **NEW LOVOL FR220D**  
LOVOL WARRANTY



✓ **NEW LOVOL FL966H**  
LOVOL WARRANTY



✓ **NEW LOVOL FL958H**  
LOVOL WARRANTY



✓ **NEW LOVOL FL936H**  
LOVOL WARRANTY



✓ **1995 CAT 769C**



✓ **NEW LOVOL FL956H**  
LOVOL WARRANTY



✓ **NEW TSHUKUDU 1000L**  
DIESEL BOWSER



✓ **2015 BELL B30E**



✓ **2005 KOMATSU D375A-5**



✓ **2010 CAT 140H**

**Visit our website on [www.durasales.co.za](http://www.durasales.co.za) for updated stock.** T&C APPLY

**JHB SHOWROOM**  
46 Viewpoint Road  
Bartlett, Boksburg

**CPT SHOWROOM**  
30 Klaat Street  
Kraaifontein, WC

**Contact our showrooms:**

Gauteng: +27 (0) 10 823 5478  
Western Cape: +27 (0) 21 212 0210

**JHB SALES TEAM:**

Curtis  
Prinsloo  
Coenie  
Jerry

**CPT SALES TEAM:**

Pottie  
Gerrie  
Melaney





# **FILTER CENTRE**

Leaders in Heavy-Duty Filtration

**Quality Lubricants  
NOW IN STOCK**



**Klenz**  
Pure Protection

[www.filtercentre.com](http://www.filtercentre.com)  
[info@filtercentre.com](mailto:info@filtercentre.com)  
031 700 9074



**Russell at Head Office**

Tel: 011- 827 2824/6

Fax: 011- 827 2850

[russell@ruspet.co.za](mailto:russell@ruspet.co.za)

[felicity@ruspet.co.za](mailto:felicity@ruspet.co.za)

WE MUFFLE THE INDUSTRY

## **RUSPET EXHAUSTS**

MANUFACTURERS OF TRUCK, BUS, EARTHMOVING & GENERATOR EXHAUSTS

**Ruspet Durban Branch**

Storm Hill

Cell: 081 737 1598

[storm@ruspet.co.za](mailto:storm@ruspet.co.za)



**ALL OUR EARTHMOVING SILENCERS ARE MADE TO OEM SPEC.  
WE HAVE NUMEROUS SPECIFICATIONS FOR CATERPILLAR, KOMATSU AND BELL ETC.**



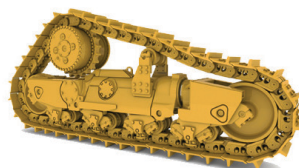
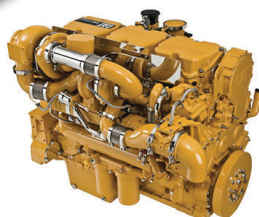
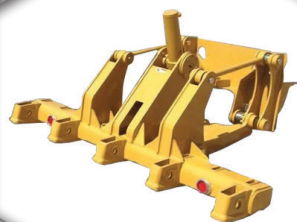




WE SPECIALISE IN A LARGE VARIETY OF NEW & REFURBISHED EARTHMOVING PARTS AND COMPONENTS.

BULLDOZERS - EXCAVATORS - MOTOR GRADERS  
TLB's - WHEEL LOADERS - ROLLERS - WHEEL DOZERS  
SKIDSTEERS - ARTICULATED & RIGID DUMP TRUCKS  
USED & REFURBISHED ENGINES

# POWERING PERFORMANCE ONE PART AT A TIME.



## THE EXPERTS IN MACHINERY COMPONENTS

VISIT OUR WEBSITE TO VIEW OUR FULL  
RANGE OF AVAILABLE PARTS & ENGINES

[www.duraparts.co.za](http://www.duraparts.co.za)

WE STOCK USED & REFURBISHED PARTS FOR THE FOLLOWING BRANDS:

**BELL**

**CASE**

**CAT**

**DOOSAN** HITACHI

**JCB**

  
JOHN DEERE

**KATO**

  
Kawasaki

**KOBELCO**

**KOMATSU**

**LIEBHERR**

 MITSUBISHI

 SUMITOMO

 TEREX

**VOLVO**

Tel: +27 82 691 9524 • Adriaan : +27 71 234 6234 • Tiaan : +27 72 290 4136  
Email : [admin@duraparts.co.za](mailto:admin@duraparts.co.za) • 222 Lemmer Rd, Vulcania, Brakpan 1541

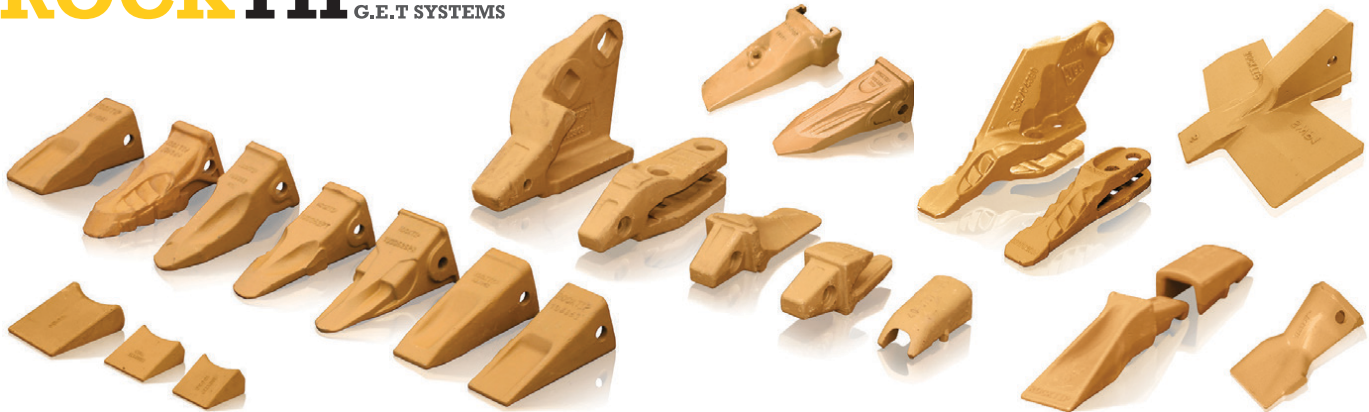




**SPEC-CAST WEAR PARTS**  
*Trusted to deliver*

Spec-Cast Wear Parts [PTY] Ltd is a leading manufacturer specializing in the supply of ground engaging tools, undercarriage, undercarriage components, track frames, suspension group replacement parts, agricultural wear parts, general castings and forgings for the construction, mining and agricultural industries.

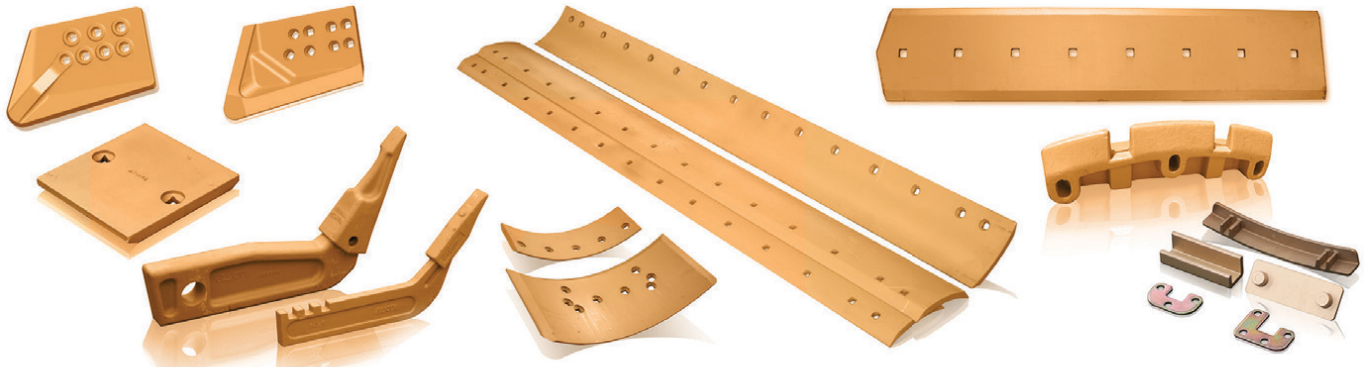
# ROCKTIP G.E.T SYSTEMS



Teeth and Adapters for Various Models



Wear Protection



Blades, Cutting Edges, End Bits and Grader Wear Parts

**Manufacturers of G.E.T to fit:**

CATERPILLAR	TEREX	ESCO	LIEBHERR	H & L	BOBCAT
KOMATSU	JCB	HYUNDAI	DAEWOO	BUCYRUS	MTG
NEW HOLLAND	MASSEY FERGUSON	CASE	BOFOR	LIUGONG	KUBOTA

Manufacturer's names, numbers, symbols and descriptions are used for reference purposes only and it is not implied that any part listed above is the product of the manufacturers.

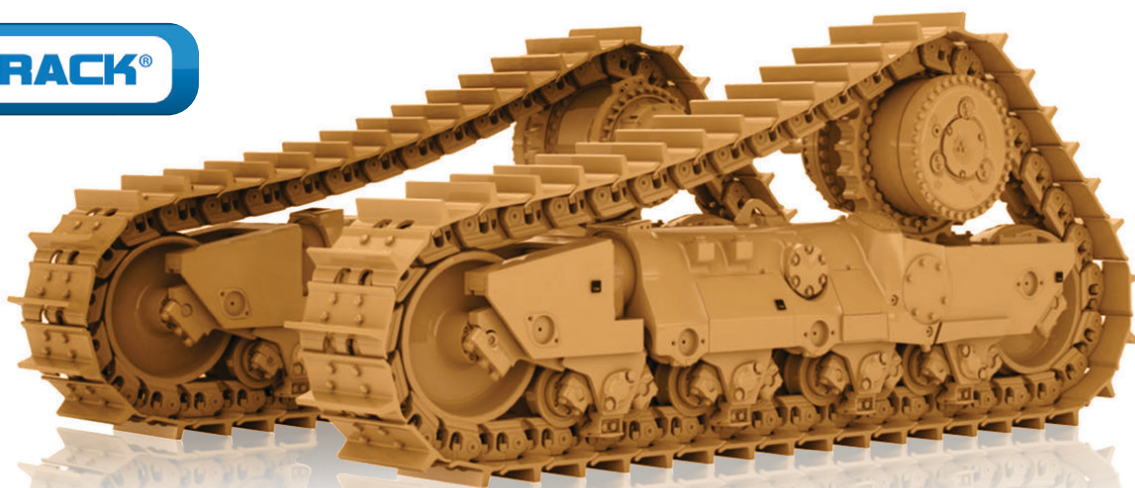


Spec-Cast offers a wide range of undercarriage components covering the entire range of modern crawler machine applications in the construction, mining, utility, forestry, road, building, and agricultural industries. Covering all makes and models of machines, from drilling machines to hydraulic excavators, as well as dozers, auxiliary machines, conveyors and customised solutions.



**SPEC-CAST WEAR PARTS**

*Trusted to deliver*



**Spec-Cast Wear Parts is an authorized Dealer for ITM and VEMATRAK undercarriage parts.**  
Call our undercarriage experts today!



**Chains**



**Rollers**



**Sprockets**



**Idlers**



**Shoes**



**Rubber Tracks**

CATERPILLAR	HITACHI	KOMATSU	LIEBHERR
6018 RH90	EX1200	PC1250	R9100
6030 RH120E	EX1800/1900	PC2000	R9150
6040/50	EX2500/2600	PC3000	R9250
RH170/200	EX3500/3600	PC4000	R9350
6060 - RH340	EX5500/5600	PC5500	R9400
7495 - 495HRII	EX8000	D375	R995
D8, D9, 10 & D11		D475	R996
			R9800

**Our track workshop is available to support all your undercarriage needs**

Turning of Pins & Bushes  
Remove/Fit Track Shoes

Re-Build Idlers  
Re-Shell Rollers

Re-Strip Grouser Shoes  
Re-Rim Sprockets

With branches and distributors located in prime areas throughout South Africa, as well as several African countries, Spec-Cast is able to provide the Earthmoving, Mining and Agricultural industries with an efficient, cost effective supply and distribution network.

## JHB HEAD OFFICE

+27 11 396 1717/13  
[aimee@spec-cast.co.za](mailto:aimee@spec-cast.co.za)  
11 Elgin Street, Pomona,  
Kempton Park, Johannesburg

## [www.spec-cast.co.za](http://www.spec-cast.co.za)

**MIDDELBURG**  
+27 13 813 1413  
[middelburg@spec-cast.co.za](mailto:middelburg@spec-cast.co.za)  
6 Jaspis Street  
Middelburg, Mpumalanga

**NORTHERN CAPE**  
+27 53 010 1304  
[northerncape@spec-cast.co.za](mailto:northerncape@spec-cast.co.za)  
Section C3, Portion of Farm Waterraad  
Kathu, Northern Cape

Follow us:







## PARTS TO SUIT CAT 777 SERIES DUMP TRUCKS

Enhanced Performance parts for CAT 777 series dump trucks used to improve operational efficiency and reduce maintenance costs.

 **geographe**™



### BALL STUD

Reference No: 7D1292 / 2730120

**R3,900.00**



### BALL STUD KIT

Reference No: 7D1292KIT

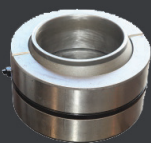
**R6,900.00**



### A-FRAME PIN

Reference No: 8X0573

**R15,280.00**



### A-FRAME BEARING

Reference No: 6V0444

**R20,500.00**



### A-FRAME KIT

Reference No: 8X0573KIT

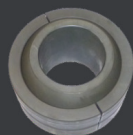
**R72,000.00**



### REAR STRUT PIN

Reference No: 9D2278

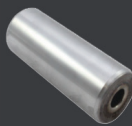
**R4,100.00**



### REAR STRUT BEARING

Reference No: 8J8906

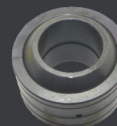
**R8,610.00**



### STABILISER BAR PIN

Reference No: 7D3009

**R2,980.00**



### STABILISER BAR BEARING

Reference No: 7J3297

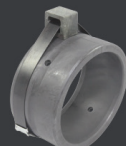
**R6,650.00**



### HOIST CYLINDER PIN

Reference No: 5T9266

**R5,940.00**



### HOIST CYLINDER BEARING

Reference No: 9D2319

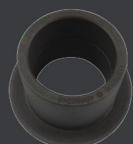
**R3,950.00**



### STEERING PIN

Reference No: 8X1847

**R6,500.00**



### STEERING BUSH

Reference No: 8X6729

**R3,860.00**



### BIN MOUNTING PIN ASSEMBLY

Reference No: 8W8454

**R8,900.00**



### PROPSHAFT MAIN SHAFT

Reference No: 2G-4080 / 1725232

**R59,300.00**

Prices valid until the end of November 2021

#### JHB HEAD OFFICE

+27 11 396 1717/13  
info@spec-cast.co.za  
11 Elgin Street, Pomona,  
Kempton Park, Johannesburg

#### [www.spec-cast.co.za](http://www.spec-cast.co.za)

MIDDELBURG  
+27 13 813 1413  
middelburg@spec-cast.co.za  
6 Jaspis Street  
Middelburg, Mpumalanga

NORTHERN CAPE  
+27 53 010 1304  
northerncape@spec-cast.co.za  
Section C3, Portion of Farm Waterraad  
Kathu, Northern Cape

Follow us:





## Vriendschap Boerdery standardises on Massey Ferguson tractors from FMS for its sugarcane operations



Such was the support and back-up offered by Farm Maintenance Services (FMS), one of the KwaZulu-Natal dealers for Massey Ferguson tractors, based in Pietermaritzburg, that client Heinrich Harris has switched from a competitor brand for all his new equipment needs. "When we were at the point to start replacing our machinery, FMS was the dealer able to meet our needs and provide us with the technical back-up we needed," says Heinrich, who is Mechanisation and Maintenance Director at Vriendschap Boerdery in Melmoth. "All our maintenance is carried out under warranty. Whatever new equipment we may require, we simply approach FMS, which has been really helpful in that regard."

FMS Sales Manager Cornie Tosen explains that value-for-money was a major consideration in Heinrich switching from a competitor brand that he has been supporting for a long time, in addition to the high standard specification level of the MF machines. "Now it is a combination of aftersales service and support that continues to make this important client feel highly valued and well looked after." To date, Vriendschap Boerdery's fleet consists of two smaller-sized MF 5710s and MF 4708 tractors, both with four-wheel drive. "We currently own ten MF 5710s and five MF 4708s, which have sufficient horsepower for common sugarcane operations. We recently bought two of the slightly bigger MF 6713s, also four-wheel drive, which are mainly used for land preparation," says Heinrich. The MF 5700 Series is a workhorse range that has re-engineered the concept of the sub 130 hp tractor from the ground up to meet the needs of present and future farming. "No other range on the market today offers such an array of build specifications, options and accessories, all designed to help tailor the machine exactly for the farming operation on hand," says Cornie. The MF 4700 Global Series is a highly modern, high-performance, heavy-duty, straightforward range of tractors that provides exceptional efficiency for every type of farmer. With its entirely new yet simple design, featuring efficient drivelines and a high level of comfort, the series also provides exceptional value for money. Vriendschap Boerdery's most recent purchase was a MF 7726. "The client needed a tractor that was both versatile and efficient for planting and large scale mowing work," says Cornie. The MF 7726 was ideal in this regard, with features such as front linkage, front and cab suspension and full guidance. Paired with a front-end butterfly mower combination, the client can now cut 8 m at a time. The tractor is also powerful enough for ground preparation and sufficiently fuel-efficient to carry out spreading work. In addition, the MF 7726 offers a low total cost of ownership that makes it a very attractive option for KZN sugarcane farmers.

Heinrich says that the MF 7726 will be deployed at another Vriendschap Boerdery farm. "The tractor is well-adapted for our operation there, especially as the front-lift system means we can deploy three separate mowers for maximum efficiency, two at the back on either side of the tractor and one in the centre that cuts in front. This is the perfect machine, and I believe in future we will definitely purchase more MF machines from FMS." The MF 7700 S Series provides a comprehensive choice of power output, transmission, cab specification, hydraulics and PTO variants. It is guidance ready and available in four models, with power ranging from 200 hp to 255 hp, and Dyna-6 and Dyna-VT transmission. Commenting on the decision to switch to both a new dealer and brand, Heinrich says the competitor did not have a mechanical, lower-spec machine in its range adequate for rugged sugarcane farming applications. "Newer technology is obviously more expensive and just adds to your cost base at the end of the day." What tipped the scales in favour of MF was the 25% price difference in its typical basket of spares. "From a maintenance point of view, this alone is a massive saving," stresses Heinrich. While a cheaper price can sometimes translate into an inferior quality product, Heinrich says the opposite is true with MF, which prides itself on the quality and reliability of its machines. "We have had no problems with our MF fleet to date. In addition, we are very well taken care of by FMS as the dealer. Minor teething problems do crop up, but the manner in which these are resolved, with the emphasis on ensuring maximum uptime and productivity, speaks volumes about the brand and its representatives. The FMS team is always on the ball and ready to assist whenever needed. We have a very good relationship, and I am very happy with the excellent service we have received." Cornie concludes that Vriendschap Boerdery is an excellent example of the type of long-standing client that FMS has cultivated over the years that it has been a MF dealer. FMS has a large footprint in the region, and "have four mobile vans for rapid-response on-site servicing and a well-equipped workshop to take care of any major repairs." In support of the farming community, Massey Ferguson has an extensive network of over 35 dealers covering the whole of South Africa, catering for parts, service, aftersales and new sales.

Potential customers interested in the MF range can obtain a price point with a rapid quote within 30 seconds, in addition to a video, brochure and the details of the nearest dealer, by simply visiting [www.masseyferguson.co.za](http://www.masseyferguson.co.za).



[www.espa.co.za](http://www.espa.co.za)

# ESP THE PROVEN ALTERNATIVE



## engine parts suitable for CUMMINS



V/VT378, V/VT504, V/VT903, 4BT3.9, 6BT5.9, 6CT8.3, L10, M11, NH220/743, NT855, N14, KT/KTA19, KT/KTA38, KTA1150

**BENEFIT FROM OUR 9 MONTHS WARRANTY PERIOD ON NEW PARTS**

ESP Johannesburg  
Tel: (011) 398-1700

ESP Benoni  
Tel: (011) 845-2911

ESP Pretoria  
Tel: (012) 804-6706

ESP Middelburg  
Tel: (013) 246-2520

ESP Pinetown  
Tel: (031) 705-4200

ESP Cape Town  
Tel: (021) 945-1030

ESP Port Elizabeth  
Tel: (041) 484-4575

ESP Bloemfontein  
Tel: (051) 432-4501

ESP Kimberley  
Tel: (053) 831-8349



ISO 9001 Certified

Manufacturers' names, numbers, symbols and descriptions are used for reference purposes only and it is not implied that any part listed is the product of the manufacturers.



[www.espa.co.za](http://www.espa.co.za)

# ESP THE PROVEN ALTERNATIVE



## engine parts suitable for KOMATSU



4D95 / S4D95 • 6D95 / S6D95 • S4D102 / S6D102 • 4D105 / S4D105 • 6D105 / S6D105 • S6D108 • S6D110 • 6D125 / S6D125 • S6D140 • S6D155 • S6D170

### BENEFIT FROM OUR 9 MONTHS WARRANTY PERIOD ON NEW PARTS

ESP Johannesburg  
Tel: (011) 398-1700

ESP Benoni  
Tel: (011) 845-2911

ESP Pretoria  
Tel: (012) 804-6706

ESP Middelburg  
Tel: (013) 246-2520

ESP Pinetown  
Tel: (031) 705-4200

ESP Cape Town  
Tel: (021) 945-1030

ESP Port Elizabeth  
Tel: (041) 484-4575

ESP Bloemfontein  
Tel: (051) 432-4501

ESP Kimberley  
Tel: (053) 831-8349



ISO 9001 Certified

Manufacturers' names, numbers, symbols and descriptions are used for reference purposes only and it is not implied that any part listed is the product of the manufacturers.



[www.espa.co.za](http://www.espa.co.za)

# ESP THE PROVEN ALTERNATIVE



engine parts  
suitable for **CATERPILLAR**



3046, 3054, 3056, 3064, 3066, 3114, 3116, 3126, 3176, 3196, 3204, 3208, 3304, 3306, 3406, 3408, 3412, D342, D343, C4.4, C6.6, C7, C9, C10, C11, C12, C13, C15, C16, C18, C27, C32

**BENEFIT FROM OUR 9 MONTHS WARRANTY PERIOD ON NEW PARTS**

ESP Johannesburg  
Tel: (011) 398-1700

ESP Benoni  
Tel: (011) 845-2911

ESP Pretoria  
Tel: (012) 804-6706

ESP Middelburg  
Tel: (013) 246-2520

ESP Pinetown  
Tel: (031) 705-4200

ESP Cape Town  
Tel: (021) 945-1030

ESP Port Elizabeth  
Tel: (041) 484-4575

ESP Bloemfontein  
Tel: (051) 432-4501

ESP Kimberley  
Tel: (053) 831-8349



ISO 9001 Certified

Manufacturers' names, numbers, symbols and descriptions are used for reference purposes only and it is not implied that any part listed is the product of the manufacturers.



[www.espa.co.za](http://www.espa.co.za)

# ESP THE PROVEN ALTERNATIVE



## engine parts suitable for VOLVO earthmoving machines



ADT A20, A25, A30, A35, A40 • Wheel Loader L60, L70, L90, L110, L120, L150, L180 • Excavator EC210, EC240, EC290, EC360, EC460 • TLB BL61, BL71

### BENEFIT FROM OUR 9 MONTHS WARRANTY PERIOD ON NEW PARTS

ESP Johannesburg  
Tel: (011) 398-1700

ESP Benoni  
Tel: (011) 845-2911

ESP Pretoria  
Tel: (012) 804-6706

ESP Middelburg  
Tel: (013) 246-2520

ESP Pinetown  
Tel: (031) 705-4200

ESP Cape Town  
Tel: (021) 945-1030

ESP Port Elizabeth  
Tel: (041) 484-4575

ESP Bloemfontein  
Tel: (051) 432-4501

ESP Kimberley  
Tel: (053) 831-8349



ISO 9001 Certified

Manufacturers' names, numbers, symbols and descriptions are used for reference purposes only and it is not implied that any part listed is the product of the manufacturers.



# McKenzie

PLANT SALES

Contact for more details: Tel: 033 212 2181  
Cell: 082 558 7901 | Email: [sjm@mckenzieplant.co.za](mailto:sjm@mckenzieplant.co.za)



**BELL B20D**  
18000 LITRE WATERTANKER



**MERC 2628 - V8**  
WITH 16000L TANK, PTO PUMP



**KOMATSU PC350LC-8**



**LOWBED**  
TWO AXLE TRAILER



**KOMATSU WA380-6**  
F.E.L.



**MERC 2628 ATEGO**  
14000 LITRE TANKER



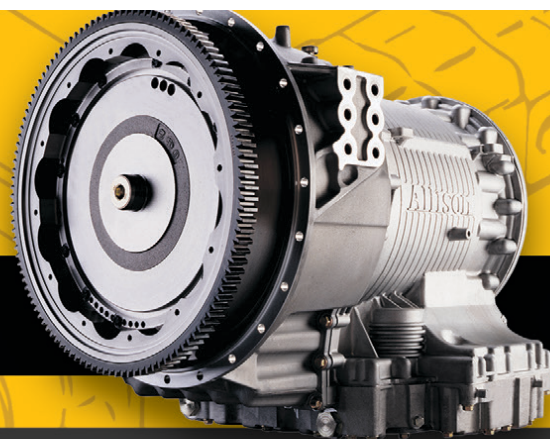
You can now find us on Facebook, go to [www.facebook.com/mckenzieplanthire](http://www.facebook.com/mckenzieplanthire)



## MZANTSI TRANSMISSIONS

6 Van der Bijl Street, Alrode South, Alberton

**We offer specialised transmission repairs for heavy duty & on highway machines**



**WE OFFER SPECIALISED TRANSMISSION REPAIRS FOR HEAVY DUTY & ON HIGHWAY MACHINES**

**BELL • TEREX • CAT • JOHN DEERE  
HITACHI • DAEWOO • ZF • ALLISON • CLARK • FUNK**

**We offer dyno testing on the following boxes:**

**ZF - 4WG92, 4WG94, 4/6WG180/200/210/310  
Allison - MD3560, HD4560**

**WE PURCHASE  
2ND HAND TRANSMISSIONS**

**Bell B17B, B20B, B25B, 1206 & B40D  
Transmissions in stock**

**Email: [info@gearboxes.me](mailto:info@gearboxes.me) | Tel: 011 868 5130 | Fax: 086 634 7904 | Cell: 071 684 5784**





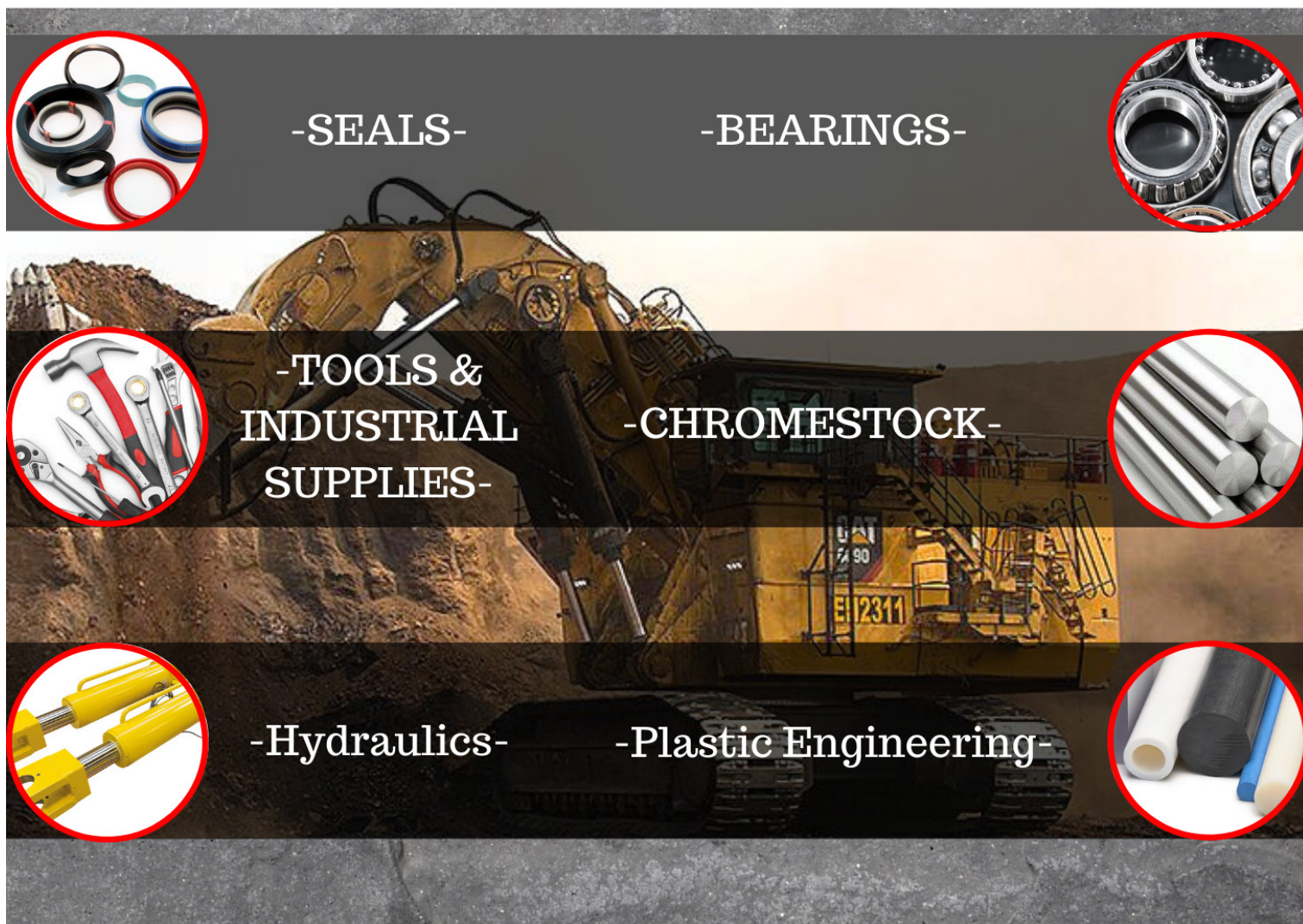
**ONE STOP  
PROCUREMENT**

504 Pretoria Road, Fairleads, Benoni 1501

TEL: 011 1003/1865

• Seals • Bearings • Hydraulic Components

**WE PROVIDE OUR CUSTOMERS WITH THE BEST SERVICE, WITH TEN YEARS EXPERIENCE IN THE INDUSTRY**



**-SEALS-**

**-BEARINGS-**

**-TOOLS & INDUSTRIAL SUPPLIES-**

**-CHROMESTOCK-**

**-Hydraulics-**

**-Plastic Engineering-**

**-BRANDS WE CATER FOR-**



• Seals • Bearings • Hydraulic Components





**CAT C27 D10T APPLICATION  
GOOD USED CORE ENGINE  
AVAILABLE FOR REBUILDING**



**C27 CRANKSHAFT  
AVAILABLE**



**C27 RECONDITIONED  
CYLINDER HEADS  
AVAILABLE**



**VARIOUS LONG SUB ASSEMBLY  
AVAILABLE**



**C27 BLOCK AVAILABLE**

## RC INVESTMENTS

FOR MORE INFO PLEASE CONTACT US  
084 253 9831 | [RCinvestments01@gmail.com](mailto:RCinvestments01@gmail.com)



**We Import & supply parts for CHANGLIN Construction Equipment**



**WE ALSO IMPORT AND SUPPLY PARTS FOR OTHER CHINESE EQUIPMENT**



**PARTS** Brake pads, Brake boosters, Cylinder seal kits, Transmission control cables, Brake calliper seals, Rear diff oscillation bushes, Fuel tank filler caps and MUCH MORE

Chris. 081 728 6914 | Cindy 017 843 2072 | Michelle 017 843 2072 | Klaas 083 391 9046



[www.AmPlant.co.za](http://www.AmPlant.co.za)

## SPECIALISED PLANT HIRE



[www.AmPlant.co.za](http://www.AmPlant.co.za)

**Asphalt Equipment / Earthmoving Equipment  
Milling Machines / Recyclers etc**

Contact - Eddie Simpson  
Office : 015 293 1221 ext 224 / Cell : 082 904 7694  
Email : [simpsons@amplant.co.za](mailto:simpsons@amplant.co.za)

Quality used plant for sale



**Specialising in earthmoving  
power transmission rebuilds of:**

- Front end loaders
- Final drives
- Drop boxes (transfer case)
- Differentials etc.

**MANUFACTURE OF ALL  
GEARS AND REPAIRS**



**REPAIR CARRIER  
HOUSINGS/ HUBS**



Tel: 031 701 3500 | Cell: 083 383 4943 | Fax/Email: 086 224 3982  
Email: [eastcoastgears@gmail.com](mailto:eastcoastgears@gmail.com) | 24 Henwood Road, Pinetown, KZN



**THOMAS MITTAG**  
Cell: +27 72 545 6223  
Mail: [info@mae-equipment.com](mailto:info@mae-equipment.com)

**MAE Equipment**  
Witbank/Riverside  
(Yard)

[www.mae-equipment.com](http://www.mae-equipment.com)

# MAE EQUIPMENT

**CAT 773F WATER BOWSER**



**2008 model**  
option to Dump-Truck  
**Call for Price**

**CAT D9R DOZER**



**2013 model**  
new undercarriage / new serviced  
**Call for Price**

**KOMATSU D375A-6**



**2011 model**  
refurbished & new undercarriage  
**Call for Details**

**KOMATSU D375A-5**



**2008 model / "as is"**  
or refurbished 2 units available  
**Call for Price**

**ATLAS-COPCO D65 SMARTROC**



**2017 model**  
refurbished  
**Call for Price**

**ATLAS-COPCO D65-FLEXIROC**



**2015 model**  
refurbished  
**Call for Price**

**ATLAS-COPCO D65 SMARTROC**



**2015 model**  
refurbished  
**Call for Price**

**ATLAS-COPCO T50 DRILL-RIG**



**2016 model**  
low hours  
**Call for Price**

**ATLAS COPCO DM30 DRILL RIG**



**2012 model**  
ready for production  
**Call for Price**

**ATLAS-COPCO DM30-MK2**



**2018 model**  
ready for production  
**Call for Price**

**SANDVIK DP1500 PANTERA**



**2010 & 2012 model**  
refurbished  
**4 units available**

**CAT 773E DUMP-TRUCK**



**2003 model**  
low hours  
**Call for Price**

**WE BUY ALL KINDS OF EARTHMOVING,  
CONSTRUCTION OR MINING MACHINERY**

**WE PAY CASH  
WITHIN 24 HOURS**

PLEASE CONTACT OR SEND OFFERS  
TO [INFO@MAE-EQUIPMENT.COM](mailto:INFO@MAE-EQUIPMENT.COM)

**WE OFFER EASY FINANCE  
FOR OUR MACHINES**

PLEASE CONTACT ON ON +27 72 545 6223 OR SEND MAIL  
TO [INFO@MAE-EQUIPMENT.COM](mailto:INFO@MAE-EQUIPMENT.COM)

**„Your Partner for new & used Machinery and Equipment.“**

[www.mae-equipment.com](http://www.mae-equipment.com)





Find quality Replacement Pumps and Fans for sale at Tractor & Grader Supplies

#### WATER PUMPS

They are put through a wash process to clean the casting and machining debris to ensure any foreign particles are removed.

Come with the CTP Logo casted in the housing for easy recognition and to avoid counterfeiting.

Better casting finish of our pumps increases pump performance and durability.

All impellers are balanced to improve pump performance and reduce vibration.

All internal components are made to specifications to ensure CTP Components fit properly.

Come with a stainless steel shaft to increase the longevity of the pump, while competitors use a carbon steel shaft.

**Find quality  
Replacement Oil and  
Water Pumps for sale  
at Tractor & Grader  
Supplies**

## AS PART OF OUR RANGE, WE FEATURE PUMPS AND FANS FROM THE CTP BRAND.

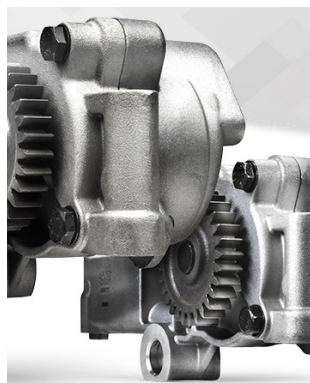
### YOUR FIRST CHOICE

All TGS fans are perfectly balanced to run more efficiently. As a result, the engine is kept cooler prolonging its life.

Reversible blades fans are also available.

At TGS we offer you a broad selection of water pumps that ensure an excellent performance of your machine's cooling system.

At Tractor & Grader Supplies, we have extensive experience in providing replacement parts and spares to the market. In an increasingly-competitive market, we ensure that our products remain of the utmost best quality and that they are provided at cost-effective rates. Ensuring that our brand and products are always competitive is a top priority for our team.



#### CONTACT US

T: +27 10 001 9200

T: +27 11 392 7533





WWW.TAGS.CO.ZA



To ensure that your Pumps remain in good health, safe and durable, they must be regularly checked. It is important to set a maintenance schedule in place, in order to ensure that any wear, tear and potential damage to the pump and surrounding components and engine parts are not overlooked. Failing to replace pumps in good time can result in damage to the equipment or a malfunction that can be quite costly to repair. Any damage to the engine will be costly to repair – keeping on top of your maintenance checks is essential!

If you are looking for the best quality pumps at decent rates, you have come to the right place. Take the time to contact us via email [info@tags.co.za](mailto:info@tags.co.za) or telephone, and we will ensure that you are presented with a range of viable pump options to consider. Our team is looking forward to assisting you with all of your needs and requirements for your replacement parts.

**AT TGS WE OFFER  
YOU A BROAD  
SELECTION OF  
WATER PUMPS THAT  
ENSURE THE  
EXCELLENT  
PERFORMANCE OF  
YOUR MACHINE'S  
COOLING SYSTEM.**



**TGS has an exclusive partnership with CTP®, a brand recognized worldwide as a manufacturer and supplier of high quality parts for the full line of Caterpillar®**

**THE MAIN FUNCTION OF THE COOLING SYSTEM IS TO REMOVE  
EXCESS HEAT FROM THE ENGINE. OUR CTP COOLING SYSTEMS  
COMPONENTS ARE ENGINEERED AND TESTED TO MAKE SURE THE  
ENGINE ON YOUR MACHINE OPERATES AT ITS MOST EFFICIENT  
TEMPERATURE AT ALL TIMES.**



# CELEBRATING



SINCE 2013



# Agri Earth

# YEARS



+27 (0) 861 888 008

+27 (0) 83 327 3237

[www.LNE-AgriEarth.com](http://www.LNE-AgriEarth.com)



# MID PLANT SERVICES

**NEW & RECONDITIONED HYDRAULIC EARTHMOVING  
EQUIPMENT, PARTS AND REPAIRS**



*THE ALTERNATIVE SUPPLIER FOR DOOSAN, HYUNDAI,  
VOLVO AND OTHER BRANDS OF EXCAVATOR  
PARTS AND COMPONENTS IN SOUTH AFRICA.*



**:+27 (0)11 967 0055**

**:+27 (0)11 967 0060**



**: SALES@MIDPLANT.COM**



**: 273 3RD AVENUE, BREDELL,  
KEMPTON PARK, 1619**



**: WWW.MIDPLANT.COM**

## JUST ARRIVED: **REXROTH** PUMPS AND PARTS



### RANGE OF A10VO **REXROTH** PUMPS AND PARTS AVAILABLE.



**CAT 428C/ D  
MAIN PUMP**



**VOLVO A30D  
STEERING PUMP**



**BELL B18D - B30D  
HOIST PUMP**



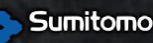
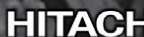
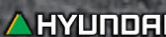
**VOLVO A35/A40D/A40E/ F  
STEERING PUMP**



**NEWSFLASH!**

**COMING SOON**

**FULL RANGE OF  
ZF MTL SERIES  
AXLE PARTS**



NEW HOLLAND

\*All manufacturers names, numbers, symbols and pictures are for reference only. It does not imply that any of the parts are the product of these manufacturers.





**Earth Mach**  
MINING AND CONSTRUCTION EQUIPMENT



Office: +27 17 843 2072

**Sales**

Chris: +27 81 728 6914

Klaas: +27 83 391 9046

**Parts**

Cindy: +27 72 757 2105

Michelle: +27 72 650 6603

Repairs on all types of equipment Cummins engine conversion on Komatsu TLB's / repair & supply of new radiators break & clutch repairs / general repairs & rebuilding / auto electrical repairs & rewiring / fuchs oils & greases / field service repairs

**Distributors of SEM Construction Equipment**  
**The performance you need The support you expect**

**DOZERS**



*A Caterpillar Brand*

**THE PERFORMANCE YOU NEED,  
THE SUPPORT YOU EXPECT**

**GENIUNE SEM PARTS QUALITY AT ITS BEST**



**MOTOR GRADERS**



**WHEEL LOADERS**



**ROLLERS**





## Did you know...

- We do Turbocharger repairs
- Most advanced turbo repair centre in Africa
- Full CNC engineering
- Turbo flow bench
- High speed VSR balancing
- Actuator programming
- In-house built test bench
- Full turbo simulation

## We specialise in turbocharger repairs for...



- Yellow machinery
  - Plant
  - Agriculture
  - Commercial vehicles
- ...at unmatched pricing & unmatched quality



*Direct from the Importers!*





# All Africa Supplies

GLOBAL REACH - LOCAL SUPPLY

[www.allafricasupplies.net](http://www.allafricasupplies.net)

011 918 9976

Enquiries: [sales@allafricasupplies.net](mailto:sales@allafricasupplies.net)

228 All Black Road Anderbolt Boksburg

**BELL**



**CARRARO**

**HITACHI**

**VOLVO**

Construction Equipment

**DOOSAN**



**CAT**



**HYUNDAI**  
HEAVY INDUSTRIES CO.,LTD.

**Mobil**

**ISUZU**

**KOMATSU**

\*All manufacturers names, numbers, symbols and pictures are for reference only. It does not imply that any of the parts are the product of these manufacturers.



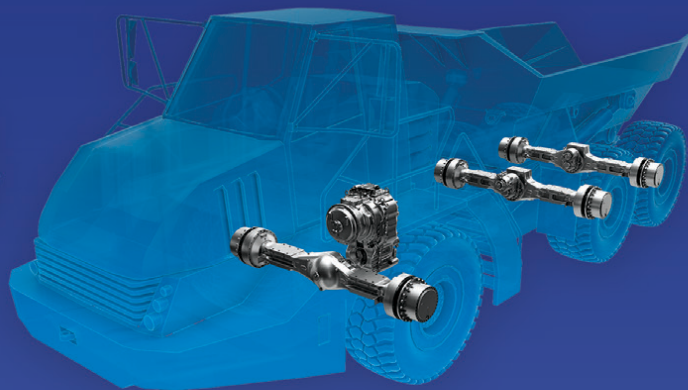
**AUTHORIZED  
PARTS DISTRIBUTOR**

**A great journey starts  
with ZF**

**Innovative solutions. OE quality parts.  
German technologie.**



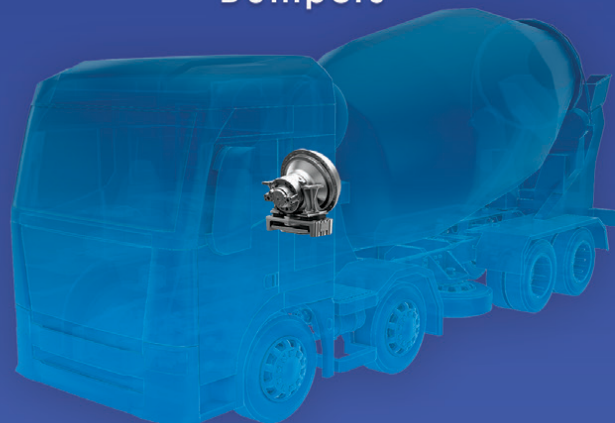
**Wheel Loaders**



**Dumpers**



**Backhoe Loaders**



**Concrete Mixers**

**JCB**





# All Africa Supplies

GLOBAL REACH - LOCAL SUPPLY

[www.allafricasupplies.net](http://www.allafricasupplies.net)

011 918 9976

Enquiries: [sales@allafricasupplies.net](mailto:sales@allafricasupplies.net)

228 All Black Road Anderbolt Boksburg

**BELL**



**CARRARO**

**HITACHI**

**VOLVO**

Construction Equipment

**DOOSAN**



**HYUNDAI**  
HEAVY INDUSTRIES CO.,LTD.

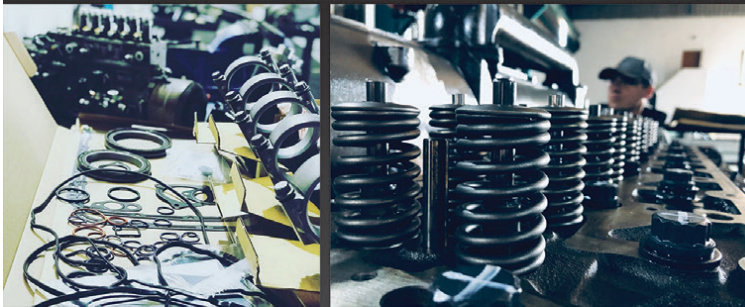
**Mobil**

**ISUZU**

**KOMATSU**

\*All manufacturers names, numbers, symbols and pictures are for reference only. It does not imply that any of the parts are the product of these manufacturers.

## Parts & Components



## Engine Rebuilds



## Hydraulic Centre



[www.allafricasupplies.net](http://www.allafricasupplies.net)

Follow us on Social Media



Facebook / All Africa Supplies



Google+



Instagram / @allafricasupplies





S. MICHELL,

# THE PLANT FINDER CC

The **RIGHT EQUIPMENT** at the **RIGHT PRICE**

## USED PLANT AVAILABLE



### 1X 2018 JCB 3CX ECO (4X4) TLB

S/NO: 2666891  
SMR: 1775 HOURS  
FULLY ENCLOSED  
AIR-CONDITIONED CAB.  
POWER TRAIN GUARANTEE.

**PRICE: R 800 000.00 + VAT.**



### 1X 2017 CATERPILLAR 428F2 (4X4) TLB

S/NO: LYG02005  
SMR: 6160 HOURS.  
FULLY ENCLOSED  
AIR-CONDITIONED CAB.  
POWER TRAIN GUARANTEE.

**PRICE: R 750 000.00 + VAT.**



### 1X 2004 DAEWOO (DOOSAN) MEGA 300-V FRONT END LOADER

SERIAL NO: 2025  
SMR: 9678 HOURS  
FULLY ENCLOSED  
AIR-CONDITIONED CAB.  
POWER TRAIN GUARANTEE.

**PRICE: R 700 000.00 + VAT.**

**SHAWN MICHELL - 082 568 4033**

Tel: 041-379 1717 / Fax: 041-379 4753

[shawn@plantfinder.co.za](mailto:shawn@plantfinder.co.za)



Follow & Like us on Facebook  
[facebook.com/ThePlantFinder](https://facebook.com/ThePlantFinder)

**WWW.PLANTFINDER.CO.ZA**





S. MICHELL,

# THE PLANT FINDER CC

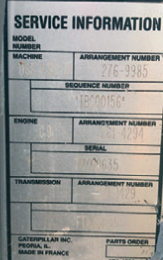
The **RIGHT EQUIPMENT** at the **RIGHT PRICE**

## USED PLANT AVAILABLE



### 1X 2012 CATERPILLAR 140K MOTOR GRADER

S/NO: SZL01366  
SMR: 10925 HOURS.  
FULLY ENCLOSED  
AIR-CONDITIONED CAB.  
1 OWNER, FSH.  
POWER TRAIN GUARANTEE.  
**PRICE: R 1 850 000.00 + VAT.**



### 1X 2006 CATERPILLAR D6R III TRACKED DOZER

S/NO: TBC00156  
SMR: 8000 HOURS  
FULLY ENCLOSED ROPS CAB,  
TILT BLADE & RIPPER.  
**PRICE: R 1 325 000.00 + VAT.**



### 1X 2012 VOLVO EC240BLC PRIME TRACKED EXCAVATOR

S/NO: 15881  
SMR: 6610 HOURS  
**PRICE: R 850 000.00 + VAT.**

**SHAWN MICHELL - 082 568 4033**

Tel: 041-379 1717 / Fax: 041-379 4753

[shawn@plantfinder.co.za](mailto:shawn@plantfinder.co.za)



Follow & Like us on Facebook  
[facebook.com/ThePlantFinder](https://facebook.com/ThePlantFinder)

**WWW.PLANTFINDER.CO.ZA**



# VENDEL EQUIPMENT SALES (PTY) LTD

## T/A | ASSOCIATED EQUIPMENT

TEL: (011) 801-4911/2/3 Website: [www.associatedequipment.co.za](http://www.associatedequipment.co.za) Plot 92 Indaba Lane- off Beyers Naude Road  
 FAX: (011) 801-4914 Rietfontein (Roodepoort), GAUTENG  
 E-mail: [vendels@mweb.co.za](mailto:vendels@mweb.co.za) E-Mail: [associatedloraine@xnet.co.za](mailto:associatedloraine@xnet.co.za)

Contact: DUNCAN - Cell: 083 626 5588/ ANTON - Cell: 082 923 5397/ JAAP - Cell: 082 892 1327 / LORAINÉ - Cell: 076 021 4344  
 For Tyres contact Loraine at (011) 801 4911/2/3 or on 076 021 4344  
 GPS Co-ordinates - S26°3'53.343 - E27°52'37.453



2 x Cat 140H Motor Graders  
with Rippers



2 x Caterpillar 140G Motor Graders  
with Rippers



1 x Komatsu GD650 Motor Grader  
with ripper



1 X Cheng Gong MG1320B  
with Ripper



1 x 2016 Doosan DX62R-3  
Excavator Piped for Hammer



1 x 2021New / Unused  
Cat 320D3 Excavator  
1 X 2009 CATERPILLAR 320D  
Excavator



3 x 2021New / Unused  
Cat 323D3 Excavator's



1 x 2011 Caterpillar 336D Excavator  
1x 2012 Hyundai 300LC-95 Excavator  
1x 2013 Komatsu PC850 Excavator



1 x 2013 Wacker 50Z3  
Excavator



1 x 2007 Caterpillar 980H  
Front end Loader



1 x 2013 Cat 950H  
F.E.L



3 x 2011,2013,2016 Hamm 3520  
Smooth Drum Rollers



2 x 2014 Sem 668C  
Front end Loader's



1 x 2011 Bell 1806E F.E.L  
1 x 2014 JCB 456 Front end Loader



1 x 2006 Hamm HD120  
Smooth Drum Roller



2 x 2018 Hamm 3411 SDR'S  
1 x 2009 Bomag BW219D-4 SDVR





# VENDEL EQUIPMENT SALES (PTY) LTD

## T/A | ASSOCIATED EQUIPMENT

TEL: (011) 801-4911/2/3 Website: [www.associatedequipment.co.za](http://www.associatedequipment.co.za) Plot 92 Indaba Lane- off Beyers Naude Road  
 FAX: (011) 801-4914 Rietfontein (Roodepoort), GAUTENG  
 E-mail: [vendels@mweb.co.za](mailto:vendels@mweb.co.za) E-Mail: [associatedloraine@xnet.co.za](mailto:associatedloraine@xnet.co.za)

Contact: DUNCAN - Cell: 083 626 5588/ ANTON - Cell: 082 923 5397/ JAAP - Cell: 082 892 1327 / LORAINE - Cell: 076 021 4344  
 For Tyres contact Loraine at (011) 801 4911/2/3 or on 076 021 4344  
 GPS Co-ordinates - S26°3'53.343 - E27°52'37.453



1 x Dynapac CS142N  
 3 Point Steel drum Roller - 13 Ton  
 1 x 2006 Bomag BW120AD-4 DDVR



1 x Caterpillar PF300C 7 Wheel PTR  
 1 x Ingersoll-Rand 27Ton PTR



1 x Hamm GRW18 PTR  
 1 x Hamm GRW15 PTR  
 2 x Hamm GRW24 PTR



5 x 2021 New / Unused  
 Case 851EX 4x4 Magnum TLB's  
 1 x 2017 Case 570T 4x4 TLB



1 x Etnyre K Chip Spreader  
 Mechanical  
 1 x TLB Hydraulic hammer



3 x 2015, 2011, 2010  
 JCB 535-140 Telehandler's  
 1 x 2014 JCB535-125 Telehandler



1 x 2011 Catrpillar D8R Dozer  
 1 x Komatsu D275-5A Dozer



8 x 2015-2014-2013  
 Volvo A40F ADT's



1 x Scania P380  
 Water Tanker 16 000L



1 x Caterpillar 725 Water Cart  
 23 000 Liters



1 x 2016 F.A.W  
 10M³ Truck



1 x TATA 813 EX2  
 Side Tipper Truck



1 x Broce Broom  
 1 x Lighting Plant



2 x Ford Mobilift  
 1 x 5 Sided impact roller  
 1 x Gallion 10 Ton Crane



1 x 2018 Kamaz 65222 6x6 15M³ Tipper  
 1 x 2004 Terex TA30 6x6 Dump Truck



1 x Benford TV1200 DDV Roller  
 1 x Terex TV1200 DDV Roller  
 1 x Bomag BW120AD-4 Roller



Hamm3411 Rollers Stripping  
 7 x Excavator - Loader Buckets  
 Caterpillar 140G Spares



1 x Komatsu 155 Dozer  
 with Ripper R1 050 000.00 Excluding vat  
 SELLING ON BEHALF OF  
 FINANCIAL INSTITUTION



1 x Cat D10R Dozer  
 with Ripper R1 200 000.00 Excluding vat  
 SELLING ON BEHALF OF  
 FINANCIAL INSTITUTION



20.5 x 25 L3 , 23.5 x25L3, 17.5x25  
 Rock Grip L4, 17.5x25 L3,  
 12.5x80x18, 1400x24L3, 16.9x28  
**ALL NEW TYRES**

GPS CO-ORDIANATES: S26°3'56.343 - E37°52'37.453

[www.associatedequipment.co.za](http://www.associatedequipment.co.za) / [www.vendequipmentsales.co.za](http://www.vendequipmentsales.co.za)





# AFRICA'S LEADING EARTHMOVING EQUIPMENT & PARTS DEALER

www.blcplant.com ☎ +27 11 555 2000 ✉ info@blcplant.com

PLANT

PARTS

RENTAL



**OVER 600  
MACHINES  
IN STOCK**



## HYDRAULIC EXCAVATORS

CAT 320D, 325D, 329D, 330D, 336D, 345D,  
349D, 365C, 374D/F, 385C, 390D/F



## DOZERS

CAT D6R, D6T, D7R, D8R, D9R/T, D10T, D11T



## RIGID DUMP TRUCKS

25 X CAT 777D, 5 X 777F



## MOTOR GRADERS

CAT 140G, 140H, 140K, 14H, 16G, 120H, 14M,  
16H, 16M



## ARTICULATED TRUCKS

BELL B40D, B35D



## ARTICULATED TRUCKS

CAT 725, 730, 740, 740B, 745C



## CAT EXCAVATOR

323D- 2017



## ARTICULATED WATER TANKERS

CAT 725, 730, 735, 740B, 773F, 777D  
BELL B40D, B20D



## FRONT END LOADER

CAT 992 K



## TRACTOR LOADER BACKHOES

CAT 428F, 428F2, 426F, 450E



## COMPACTION ROLLERS

BOMAG BW212-3, BW213D, BW219-3  
CAT CS533, CP 533E, CS563E, CS76



## FRONT END LOADERS

CAT 950H, 950GC, 966H, 962H, 972H,  
980H, 988G, 992K

**LARGEST STOCK OF  
PARTS IN THE  
SOUTHERN HEMISPHERE**

Service exchange units available.

**6 MONTHS WARRANTY**  
on refurbished components.

View all our available  
stock on our website  
**www.blcplant.com**





BLC Plant purchases earthmoving equipment for stock, rebuilds it as required in the fully equipped on-site workshops and then sells it to users in various industries. We focus on delivering products which meet customer specifications, offer buyers a viable alternative to new equipment and provide excellent after sales service and support.

**View all our available stock on our website**  
[www.blcplant.co.za](http://www.blcplant.co.za)

## PLANT

### PLANT - STOCK READY TO GO



**CAT D11T**  
2011



**CAT 966H**  
2013



**TADANO**  
TR250M-4 CRANE



**TADANO**  
TR250-5 CRANE



**CAT MOTOR GRADER**  
120H



**INGERSOLL-RAND ROLLERPACK**  
27T



**BOMAG BW212 PAD FOOT ROLLER**  
2013



**MAHINDRA VX90 4X4**  
2021

### TRUCKS - STOCK READY TO GO



**MERCEDES AXOR 2628 14000L WATER TANKER**  
(2008)



**MERC-BENZ ACTROS 3331 ROCK BIN**  
(2008) X 3



**VOLVO 18000L WATER TANKER**  
(2012) 5 AVAILABLE



**MERCEDES ACTROS 3331 TIPPER TRUCK**  
(2007)

Call us now

**+27 (0)11 555 2000**

or visit

**www.blcplant.com**

for our latest stock.





Largest stock of parts in the southern hemisphere. Service exchange units available.

[www.blcplant.com](http://www.blcplant.com)

+27 11 555 2000

[info@blcplant.com](mailto:info@blcplant.com)

Corner Wynberg Road and 2nd Avenue, Kew

## PARTS



**WE STRIPPED OVER  
3000 CAT MACHINES  
FOR PARTS**



**PARTS WORKSHOP**



**WE ONLY USE GENUINE PARTS**

**6 MONTHS WARRANTY** on refurbished components



**CATERPILLAR**  
Dozer Engines



**CATERPILLAR**  
Dozer Final Drives



**CATERPILLAR**  
Grader Transmissions



**CATERPILLAR**  
Loader Axles



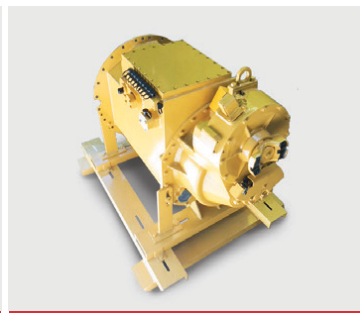
**CATERPILLAR**  
Loader Transmissions



**CATERPILLAR**  
Grader Axles



**CATERPILLAR**  
Transfer Box



**CATERPILLAR**  
Off Highway Transmissions

Call us now **+27 (0)11 555 2000** or visit [www.blcplant.com](http://www.blcplant.com) for our latest stock.





# MACHINES FOR SALE



**2013 - LIEBHERR 538 LOADER**  
(Automatic greasing system  
and L5 tyres)  
**R400 000 + VAT**



**2007  
MERCEDES BENZ AXOR 2628**  
(10m³ - Tipper)  
**R450 000 + VAT**



**1985 - MERCEDES BENZ 2629**  
(10m³ - Tipper)  
**R250 000 + VAT**



**2 X 2004  
VOLVO A25D 6X6 DUMPER TRUCKS**  
(Fitted with greedy boards & Tailgate)  
**R550 000 + VAT**



**2006 - ISUZU F - SERIES**  
(10M³ - Tipper)  
**R350 000 + VAT**



**2008 - VOLVO L120F LOADER**  
(Automatic greasing system  
and L5 tyres)  
**R500 000 + VAT.**



**1993 - MERCEDES BENZ 1414**  
(5M³ Tipper)  
**R185 000 + VAT**



**1984  
AVALING BARTFORD GRADER**  
**R250 000 + VAT**



**1997 - ISUZU FTR800**  
(5m³ - Tipper)  
**R 185 000 + VAT**



**Francois Gerber**

082 454 0934 | [charlesjnr@transand.net](mailto:charlesjnr@transand.net) | 044 695 0105



# THE PARAMOUNT GROUP

## Tracks & Equipment

We are level 1 B-BBEE company with a National Footprint and SADC reach

**We procure diversified extended offerings in the Manufacture and refurbishment of Buckets, Bowls and supply of Undercarriage, GET in the mining and related industries.**

Paramount has been trading since 2013. We offer Professional Engineering services to the mining industry. We strive for innovation and utilize the best material available in the market and offer best fit solutions for our customers. Understanding our customer requirements is important. We source and provide them with best engineering solutions that are suitable for their operations.

Paramount has aligned with only the best manufactures within this industry, Combi wear parts (GET), ITM (Undercarriage), SSAB on their Hardox and XMOR range. With these partnerships we are able to service large mining companies from a manufacturing and refurbishment perspective.



Our commitment to continuous improvement and innovation drives our ongoing and growing African presence. Please feel free to contact us for more information about Our industry-leading products and services.



### Your Partner in Mining Equipment Solutions



**Gauteng**  
32 VAN BUUREN ROAD  
HANS MERENSKY OFFICE PARK  
BEDFORDVIEW, JHB  
TEL: + 2710 007 3258

**Mpumalanga**  
2 WATT STREET  
INDUSTRIAL AREA  
MIDDELBURG  
TEL: 0101 007 3109

**Northern Cape**  
RIETBOK STREET, OFFICE 5  
NS&R BUILDING, KATHU  
TEL: 082 902 6376 /  
072 849 6970

**Botswana**  
PLOT 454  
JWANENG  
TEL: 00 27 007 3258  
+26771 968 840

**Ghana**  
4 GATEWAY OF COMMUNITY 12  
TEMA  
GHANA  
TEL: +233 2944 13989

**Lesotho**  
SEHALAHALA ST. NO.32  
RECECOUSE AREA  
MASERU, LESOTHO  
TEL: +266 5111 6442

Contact us on [sales@paramounttracks.com](mailto:sales@paramounttracks.com) & [sales@paramount-equipment.com](mailto:sales@paramount-equipment.com) or visit our website at [www.paramounttracks.com](http://www.paramounttracks.com)



PROUD SUPPLIERS OF:







## CATERPILLAR HARD PARTS, TRANSMISSION DISCS & LONG LIFE WET BRAKE DISCS & FACE SEALS



29 Romeo Street, Boksburg, South Africa

[www.sintech.co.za](http://www.sintech.co.za) | [sales@sintech.co.za](mailto:sales@sintech.co.za) | +27 (0)11 823 2359



@sintechza



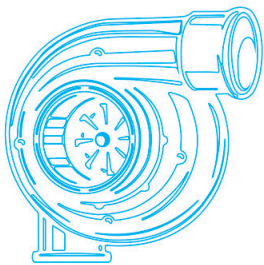
@sintechza



@sintech







# TURBOWORKS

*"Best quality turbochargers – no compromise"*

## Turbochargers

- New
- Reconditioned, service-exchange
- Repairs

## Sectors

- Mining
- Plant hire
- Transport
- Agriculture
- Passenger vehicle
- Generators

- All makes and models
- 12 Months warranty
- Free "Strip-and-quote"
- Pick-up and deliver
- Supplying the entire African continent



**Tel: +27 12 653 7507**

**Email: [sales@turboworks.co.za](mailto:sales@turboworks.co.za)**

**[www.turboworks.co.za](http://www.turboworks.co.za)**

**After-hours: +27 82 824 8037**

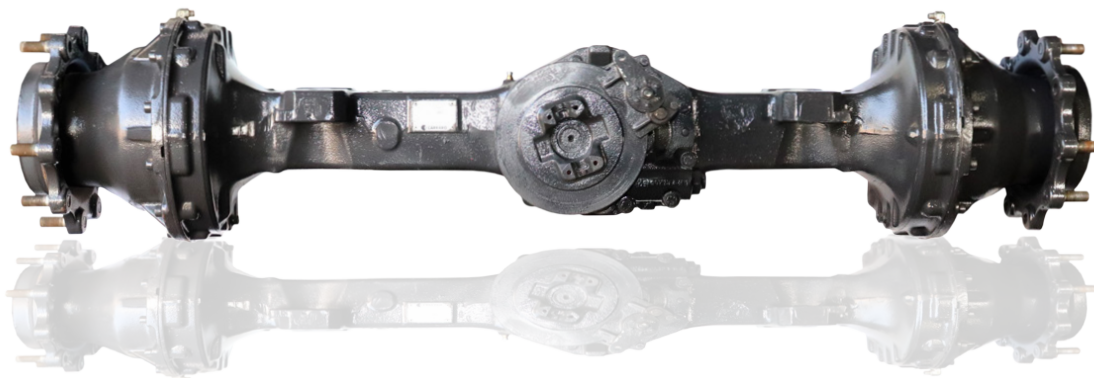


# POWER TRANSMISSION TECHNOLOGY

## EARTHMOVING DRIVELINE COMPONENT SPECIALISTS

### AXLE PARTS, REPAIRS & REBUILDS

Off-highway Axles for Volvo, Bell, Cat and more



View our online catalogue for more: [pttech.co.za/product-catalogue](http://pttech.co.za/product-catalogue)



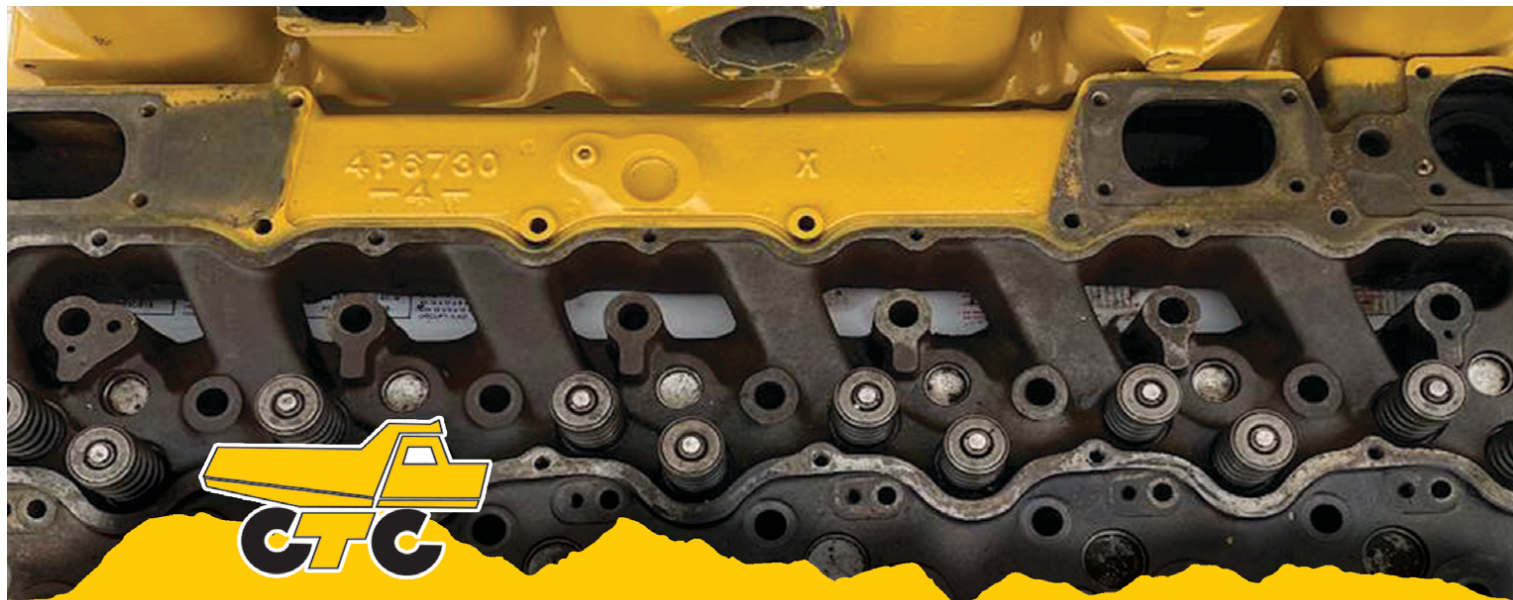
# PTT

KEEPING YOUR PLANT IN MOTION

Contact us: Tel: 011 022 8570

Email: [info@pttech.co.za](mailto:info@pttech.co.za)





**C.T.C. PLANT COMPANY**  
SINCE 1992

## UNITS STRIPPED FOR PARTS AVAILABLE

### DOZERS

- CAT D7H
- CAT D8R
- CAT D9N
- CAT D9R

### DUMPERS

- BELL B20B
- BELL B25B
- BELL B25C
- BELL B25D
- BELL B30D
- BELL B30E
- CAT 725
- CAT 740B
- VOLVO A25C
- VOLVO A40E

### ROLLERS

- BOMAG BW212D
- DYNAPAC CC142 DOUBLE DRUM

### SKIDSTEERS

- CASE 1845C
- CASE 226B
- CAT 216B

### GRADER

- BELL 770CH

### EXCAVATORS

- BELL HD1430
- CASE CX360
- CAT 325D
- CAT 330D
- CAT 350L
- DOOSAN DX300
- HALLA HE220LC
- JCB JS360
- SUMITOMO SH360
- VOLVO EC210 BLC

### WHEEL LOADERS

- BELL 1806D/E
- CAT 924G
- CAT 938H
- KOMATSU WA200-5
- KOMATSU WA320-3
- KOMATSU WA380-5
- KOMATSU WA480-6
- VOLVO L90E

### TLB'S

- CASE 580SR
- CAT 422E
- CAT 424D
- CAT 428C
- CAT 428E
- CAT 428F
- JCB 3CX
- KOMATSU WB93R/WB91R
- VOLVO BL71/BL61

## FOR SUPERIOR QUALITY PARTS ON ALL MAJOR BRANDS

Cnr. Michigan & Manchester  
Streets, Airport Industria,  
Cape Town, South Africa

Mark Swanepoel: +27 82 825 6966

Roy Heather: +27 61 421 9184

Ryno Hollenbach: +27 81 749 3627

[www.ctcplant.com](http://www.ctcplant.com)







# VORTEX

## TRANSMISSIONS

Tel: 011 452-4430/1  
 Parts: 011 452 3296 / 452 3390  
 Johan: 082 333 1005  
 Jan: 082 333 1004  
 Fax: 011 609 5302  
 Email: [vortex3@mweb.co.za](mailto:vortex3@mweb.co.za)



### Allison Fuller • Clark • Caterpillar • Funk Twin Disk



#### SERVICE UNITS:

- AT 545 bell (spec)
- MT 643 bell (spec)
- MD 3560 P TID 2
- MD 3560 P TID 3
- MD 3060 TID 3
- 4500 ORS GEN 4
- 4500 ORS R GEN 4 LIFE FILTER Bell B40D
- 4500 ORS R GEN 4 Bell B50E
- Terex engine PTO 'S TR 60
- Euclid and Terex transmission PTO'S
- Euclid 6610A CEC2
- Terex 6610AR CEC 2
- Euclid 6620A

#### UNITS THAT WE ALSO DO:

- Bell grader transmissions
- Cat transmissions
- Funk transmissions
- Terex & Euclid Differential center portions
- Bell differential center portion
- Chelsea PTO'S
- Terex engine PTO'S TR100

**Repairs to all  
 OFF & ON Highway  
 Transmissions,  
 Torque Convertors,  
 Gearboxes, Differentials  
 & Power Take Off's**

**Vortex Transmissions** sell genuine Allison parts for all our transmissions  
 Dvno testing is done in house and all transmissions that are tested have test reports.







VARIETY OF  
**CATERPILLAR & HITACHI ENGINES**



**CAT 16H GRADER ENGINE**  
RUNNER



**CATERPILLAR 777 / 785**  
**D11 TORQUE CONVERTERS**



**CAT 785 RECONDITIONED**  
**& USED FINAL DRIVE**



**RECONDITIONED**  
**CAT 773 DIFF**



### **CAT 773F** Stripping for parts



Available parts:

2 x Final drives	All suspension cylinders
1 x Diff	1 x Radiator pack
1 x Transmission	

### **CAT 773F** Bowl



### Stripping **2 x Cat 992G**



**PLEASE ENQUIRE FOR  
INFORMATION ON  
AVAILABLE PARTS**

### **CAT 789C** Used Engine



### **SET / RECONDITIONED CAT 6030 FACE SHOVEL CYLINDERS**



RH120 / RH200  
& RH340 Sprockets



2 x Boom Lift Cylinders / 2 x Stick Cylinders  
2 x Bucket Tilt Cylinders



RH120E Reconditioned  
Cylinders



**INMINE** have a full operational workshop, that does all work inhouse  
from Idler rebuilds to Grouser shoe restripping.



## GOOD USED EARTHMOVING PARTS AND EQUIPMENT

# STM

**MINING EQUIPMENT PTY(LTD)**

Tel: (011)894-6192 / (011)894-3377  
Fax: (011)894 7914  
[barney@stmmining.co.za](mailto:barney@stmmining.co.za)  
[donovan@stmmining.co.za](mailto:donovan@stmmining.co.za)

**Office Hrs: Mon-Fri 07h00-17h00**



**GOOD RUNNING ZAXIS 200**  
UNDER 6 000 HRS



**275-5**  
NO TRANSMISSION STRIPPING



**D375-6 MACHINE**  
STRIPPING



**928G**  
GOOD RUNNING MACHINE



**GOOD RUNNING 740**  
(B1P) SERIAL



**D375-5**  
STRIPPING FOR PARTS



**FULLY REBUILT 140G GRADER**  
WITH WARRANTY



**325C**  
STRIPPING FOR PARTS



**938F**  
GOOD RUNNING MACHINE



**950H**  
STRIPPING FOR PARTS



**740 ADT DUMPERS X 2** RUNNING  
FOR REBUILD OR STRIPPING

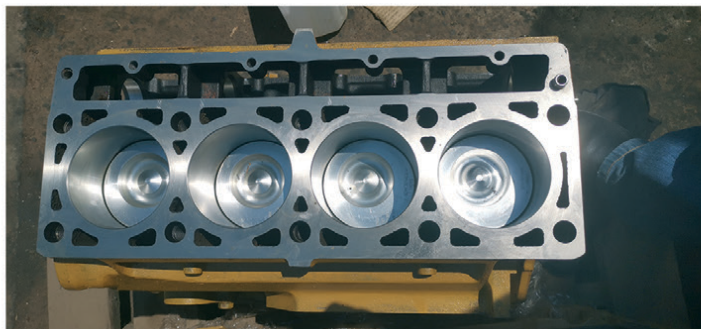


# GOOD USED EARTHMOVING PARTS AND EQUIPMENT

## STM

**MINING EQUIPMENT PTY(LTD)**

Tel: (011)894-6192 / (011)894-3377  
 Fax: (011)894 7914  
[barney@stmmining.co.za](mailto:barney@stmmining.co.za)  
[donovan@stmmining.co.za](mailto:donovan@stmmining.co.za)  
 Office Hrs: Mon-Fri 07h00-17h00



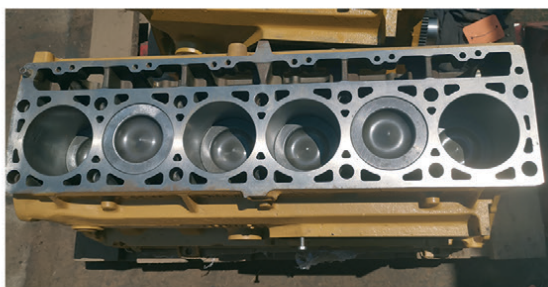
**3114DI RECON SUB**



**Recon C11  
HEAD AND CRANK**



**REMAN SUB / CAT C9**



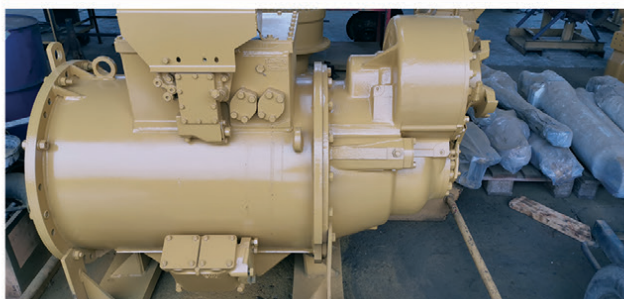
**RECON 3126DI SUB**



**REMAN 3126 HEADS**



**D10T RECON  
SERVICE EXCHANGE FINAL DRIVES**



**RECON 789C TRANSMISSION**



**CAT C6.6  
ENGINE**



**RECON D375-5  
TILT CYLINDER**



**D11R  
FINAL DRIVE**



**CAT 140G  
TRANS RECON  
S/EXCHANGE**



**3412DI  
REMAN SUB**



**D8R RECON FINAL DRIVE  
SERVICE EXCHANGE**

**STRIPPED  
ENGINES**

3304/6  
3204  
3126  
3406  
3408  
3412  
3508  
3512  
3516

C6.4  
C7  
C9  
C11  
C13  
C15  
C18  
C27  
C32

**MACHINES**

**EXCAVATORS**

225  
317B  
318B  
320B  
325B  
330B  
320D  
323D  
330D

**LOADERS**

920  
930  
936G  
938G  
950A/H  
966G  
980F/G  
988B

**[www.stmmining.co.za](http://www.stmmining.co.za)**

PO Box 6456, Dunswart 1508, 40 Michelson RD. Westwood, Boksburg





# FIELD SERVICES NOW AVAILABLE



**Primeplant (Pty) Ltd**

Tel: 011 979 4853 Fax: 011 396 1653

[www.primeplant.co.za](http://www.primeplant.co.za)



We specialize in the repair & maintenance of **CAT** TLB's





# GFA

Gears for Africa

**ADDRESS:**

145 Lamp Road, Wadeville  
Germiston

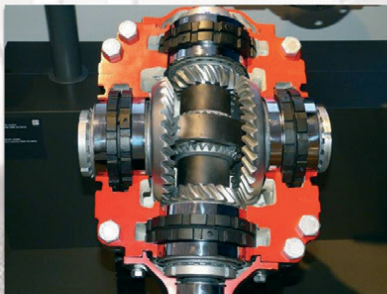
**OUR QUALITY COMPARES 100 % TO ANY OEM SPARE MANUFACTURES**

**MANUFACTURE OF SPIRAL BEVEL GEARS NOW AVAILABLE**

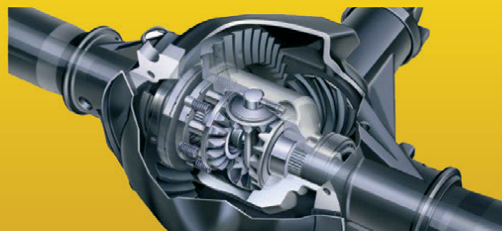


*Gears for Africa products include all types of gears, sprockets, splines and related product for industrial and heavy duty equipment and practically all applications related to power drive systems:*

- Bevel Gears
- Spur Gears
- Worm Gears
- Helical & Internal Helical Gears
- Crown Gears
- Internal & External Splines.



**CROWN WHEEL AND PINION, PLANETARY, SUN AND RING GEARS  
FINAL DRIVE GEARS, DIFF HOUSINGS SPIDER CROSS KITS, SPIRAL BEVEL GEARS  
FOR THE MINING, RAIL, HEAVY EARTH MOVING, BUILDING,  
AND AGRICULTURAL INDUSTRIES**



083 657 0522 | [carl@gearsforafrica.co.za](mailto:carl@gearsforafrica.co.za)  
[www.gearsforafrica.co.za](http://www.gearsforafrica.co.za)

Tel: 011 824 2017  
Fax: 011 420 3314





**SHIN LI**  
**TRADING** ©



*We Specialise in  
Japanese & Korean  
Earthmoving Spares*

## ENGINE SPARES

Liner Kits, Gasket Kits, Valves & Guides,  
Water Pumps, Oil Pumps, Crank & Cam Shafts,  
Engine Bearings & Bushings



**Mitsubishi**  
**Komatsu**  
**Doosan**  
**Nissan**  
**Isuzu**  
**Hino**

## HYDRAULIC PARTS

### Kawasaki Pumps

New and Complete



### Final Drives

20 Ton Excavator  
Final Drive Parts  
& Complete Units



### Komatsu Gear Pumps

Transmission Pumps  
Steering Pumps  
Main Pumps



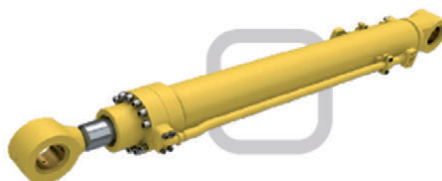
### Kawasaki Rotating Groups

K3V and K5V Series  
Inner Parts  
Rotating Groups  
Seal Kits



### Komatsu Cylinders

Complete Cylinders  
Seal Kits



**WWW.SHINLITRADING.CO.ZA**

Email:

sales@shinlitrading.co.za (Chris)  
sales2@shinlitrading.co.za (Wimpie)  
sales3@shinlitrading.co.za (Martin)  
sales4@shinlitrading.co.za  
sales5@shinlitrading.co.za (Steven)

Address: 67 High Road

Bredell A/H

Kempton Park

Tell: 011 396 1081

011 552 5900 1/2

Fax: 086 666 2537





***Working hard,  
so you don't have to.***

**WWW.SHINLITRADING.CO.ZA**

## **UNDERCARRIAGE**

**Track Links**



**Sprockets**



**Idlers**



**Track & Carrier**



**Rollers**

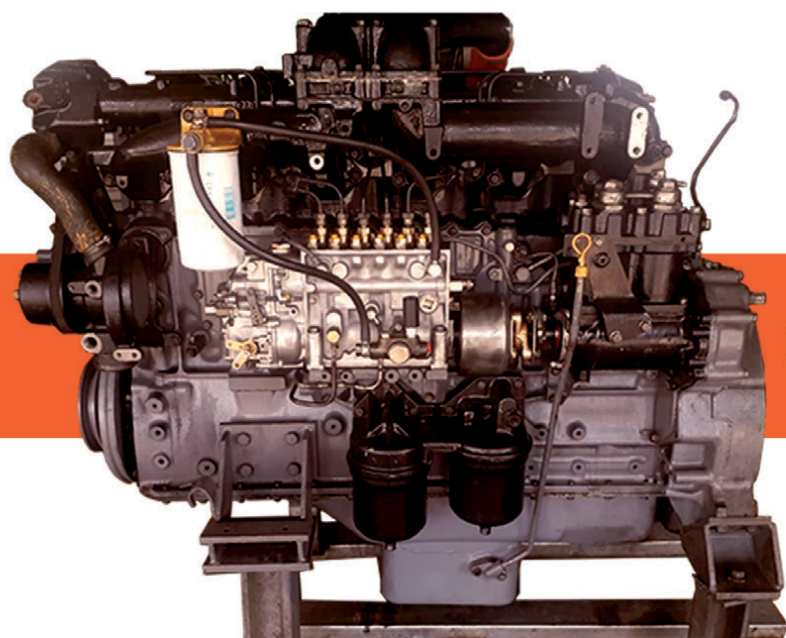


**Track Plates**

**Bolts & Nuts**

**Genuine Hyundai**

**20 Ton Track Frames**



**6D22T FOR SALE**

**Address:** 67 High Road  
Bredell A/H  
Kempton Park  
**Tell:** 011 396 1081  
011 552 5900 /1/2  
**Fax:** 086 666 2537

**Scan the QR Code  
to see our website:**



**SHIN LI  
TRADING** ©



[www.espa.co.za](http://www.espa.co.za)



# ESP THE PROVEN ALTERNATIVE



## engine parts suitable for VOLVO earthmoving machines



ADT A20, A25, A30, A35, A40 • Wheel Loader L60, L70, L90, L110, L120, L150, L180 • Excavator EC210, EC240, EC290, EC360, EC460 • TLB BL61, BL71

**BENEFIT FROM OUR 9 MONTHS WARRANTY PERIOD ON NEW PARTS**

ESP Johannesburg  
Tel: (011) 398-1700

ESP Benoni  
Tel: (011) 845-2911

ESP Pretoria  
Tel: (012) 804-6706

ESP Middelburg  
Tel: (013) 246-2520

ESP Pinetown  
Tel: (031) 705-4200

ESP Cape Town  
Tel: (021) 945-1030

ESP Port Elizabeth  
Tel: (041) 484-4575

ESP Bloemfontein  
Tel: (051) 432-4501

ESP Kimberley  
Tel: (053) 831-8349



ISO 9001 Certified

Manufacturers' names, numbers, symbols and descriptions are used for reference purposes only and it is not implied that any part listed is the product of the manufacturers.



[www.espa.co.za](http://www.espa.co.za)

# ESP THE PROVEN ALTERNATIVE



**engine parts**  
**suitable for CATERPILLAR**



3046, 3054, 3056, 3064, 3066, 3114, 3116, 3126, 3176, 3196, 3204, 3208, 3304, 3306, 3406, 3408, 3412, D342, D343, C4.4, C6.6, C7, C9, C10, C11, C12, C13, C15, C16, C18, C27, C32

**BENEFIT FROM OUR 9 MONTHS WARRANTY PERIOD ON NEW PARTS**

ESP Johannesburg  
Tel: (011) 398-1700

ESP Benoni  
Tel: (011) 845-2911

ESP Pretoria  
Tel: (012) 804-6706

ESP Middelburg  
Tel: (013) 246-2520

ESP Pinetown  
Tel: (031) 705-4200

ESP Cape Town  
Tel: (021) 945-1030

ESP Port Elizabeth  
Tel: (041) 484-4575

ESP Bloemfontein  
Tel: (051) 432-4501

ESP Kimberley  
Tel: (053) 831-8349



ISO 9001 Certified

Manufacturers' names, numbers, symbols and descriptions are used for reference purposes only and it is not implied that any part listed is the product of the manufacturers.



[www.espa.co.za](http://www.espa.co.za)

# ESP THE PROVEN ALTERNATIVE



## engine parts suitable for KOMATSU



4D95 / S4D95 • 6D95 / S6D95 • S4D102 / S6D102 • 4D105 / S4D105 • 6D105 / S6D105 • S6D108 • S6D110 • 6D125 / S6D125 • S6D140 • S6D155 • S6D170

### BENEFIT FROM OUR 9 MONTHS WARRANTY PERIOD ON NEW PARTS

ESP Johannesburg  
Tel: (011) 398-1700

ESP Benoni  
Tel: (011) 845-2911

ESP Pretoria  
Tel: (012) 804-6706

ESP Middelburg  
Tel: (013) 246-2520

ESP Pinetown  
Tel: (031) 705-4200

ESP Cape Town  
Tel: (021) 945-1030

ESP Port Elizabeth  
Tel: (041) 484-4575

ESP Bloemfontein  
Tel: (051) 432-4501

ESP Kimberley  
Tel: (053) 831-8349



ISO 9001 Certified

Manufacturers' names, numbers, symbols and descriptions are used for reference purposes only and it is not implied that any part listed is the product of the manufacturers.



[www.espa.co.za](http://www.espa.co.za)

# ESP THE PROVEN ALTERNATIVE



## engine parts suitable for CUMMINS



V/VT378, V/VT504, V/VT903, 4BT3.9, 6BT5.9, 6CT8.3, L10, M11, NH220/743, NT855, N14, KT/KTA19, KT/KTA38, KTA1150

**BENEFIT FROM OUR 9 MONTHS WARRANTY PERIOD ON NEW PARTS**

ESP Johannesburg  
Tel: (011) 398-1700

ESP Benoni  
Tel: (011) 845-2911

ESP Pretoria  
Tel: (012) 804-6706

ESP Middelburg  
Tel: (013) 246-2520

ESP Pinetown  
Tel: (031) 705-4200

ESP Cape Town  
Tel: (021) 945-1030

ESP Port Elizabeth  
Tel: (041) 484-4575

ESP Bloemfontein  
Tel: (051) 432-4501

ESP Kimberley  
Tel: (053) 831-8349



ISO 9001 Certified

Manufacturers' names, numbers, symbols and descriptions are used for reference purposes only and it is not implied that any part listed is the product of the manufacturers.





**MARSAY EQUIPMENT**  
QUARRY | MINING | CONSTRUCTION

**Marsay Equipment** specialises in the buying, refurbishment and selling of good used construction, mining, stone crushing and transport equipment.

We operate throughout southern Africa, mainly the SADC region. We are based in Johannesburg South Africa and have been in business for 44 years.

**TIM MARSAY +27 83 654 4248**  
**PATRICK MARSAY +27 79 187 7937**

[tim@marsayequip.co.za](mailto:tim@marsayequip.co.za)  
[www.marsay.co.za](http://www.marsay.co.za)



**HADFILEDS 36X26 JAW CRUSHER**  
REBUILT



**HADFIELD'S 16X10**  
JAW CRUSHER



**WINGET 400 R**  
CONCRETE MIXER  
DIESEL OR ELECTRIC



**NEW KAROO MOBILE DRY**  
BATCHING PLANT



**WATER & DIESEL TRAILERS**  
OF VARIOUS SIZES

**EQUIPMENT VALUATIONS**  
DO YOU NEED AN ACCURATE MARKET VALUE OF YOUR USED EQUIPMENT?  
**PLEASE CONTACT US!**



## Rooting out price fixing in mining and construction

Surface mining industry association, ASPASA, has set out a comprehensive set of guidelines to prevent its members and their clients from intentionally or unintentionally fixing the prices of the products that they produce.

The line between collusion and prudent pricing can be blurry at times and the association has set out to debunk and demystify the process of pricing and bidding with a set of guidelines for all its members. "We need our members and customers to be alert to price fixing and be able to recognise what constitutes uncompetitive behaviour and take action to prevent it. Ignorance is no excuse in the eyes of the law and it is our aim to arm our members with information that will prevent them from accidentally falling foul of the law and alert them to circumstances that may be perceived to be contrary to fair competition," says Nico Pienaar, director of ASPASA.

He adds that the guidelines are available to members and includes information on the following:

- **What is bid rigging, rotation and suppression**
- **Surface mines, construction managers and suppliers' obligations**
- **Consequences of breaking the law**
- **Fines and disqualification of directors**
- **Criminal prosecution and imprisonment**
- **Reputational impact**
- **Ensuring compliance with competition laws and what practices break the rules**
- **Whistleblowing**

The guidelines also include templates of non-collusion agreements and other important notes to ensure compliance with competition legislation. It also covers bribery and the implications of being involved in illegal practices. It also outlines the consequences of breaking the law. There is also advice for mine managers and construction projects directors to identify the signs of corruption and how to make it clear that this type of behaviour will not be accepted on their sites. The same applies to sub-contractors and suppliers to these industries.

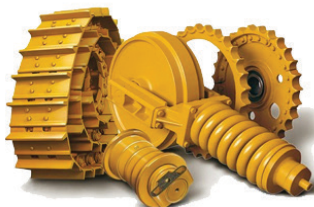
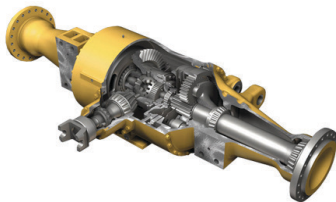


**Nico Pienaar of ASPASA**

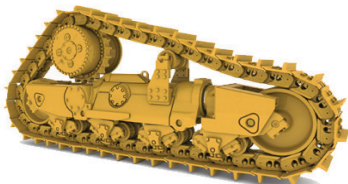
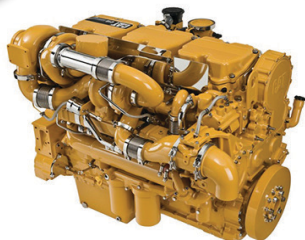
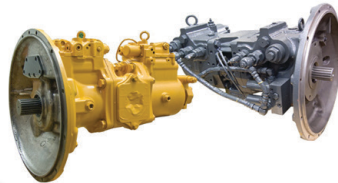
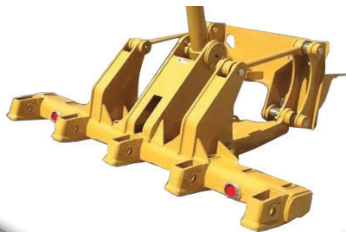
**Aspasa, Nico Pienaar, Tel: (011) 791 3327, Fax: 086 647 8034, Email: [nico@aspasa.co.za](mailto:nico@aspasa.co.za), Web: [www.aspasa.co.za](http://www.aspasa.co.za)**



Visit our new website  
[www.duraparts.co.za](http://www.duraparts.co.za)







**NEW  
USED  
REFURBISHED  
WORK READY**



**VIEW ALL  
OUR STOCK  
AVAILABLE  
ONLINE**

**POWERING  
PERFORMANCE  
ONE PART  
AT A TIME.**

**THE EXPERTS  
IN MACHINERY  
COMPONENTS**

**Office : +27 82 691 9524 • Adriaan : +27 71 234 6234 • Tiaan : +27 72 290 4136  
Email : [admin@duraparts.co.za](mailto:admin@duraparts.co.za) • Address : 222 Lemmer Rd, Vulcania, Brakpan 1541**

**[www.duraparts.co.za](http://www.duraparts.co.za)**



# Endless Possibilities



**Dig. Load. Move. Repeat.**



## **MANITOU SOUTHERN AFRICA**

**Tel:** +27 10 601 3000 **Address:** Proton Industrial Park, Proton Street, Chloorkop

**Email:** [info.msa@manitou-group.com](mailto:info.msa@manitou-group.com) | [www.manitou.co.za](http://www.manitou.co.za)

**Represented throughout the African continent through our network of dealers.**

 **MANITOU**  
HANDLING YOUR WORLD





**Safety GRIP**

Sole importer of the SAILUN OTR & Giant OTR Range

[f](#) [in](#) [ig](#)



**HARD WORKING TYRES DESIGNED FOR RIGIDS, DUMP TRUCKS (ADT), LOADERS AND CRANES**

**SUPERIOR PERFORMANCE LOWEST COST-PER-HOUR**



**Contact us now** and enquire about our SAILUN OTR tyre range

Tewus Wessels, OTR Sales Manager | Tel. +27 (0) 83 639 2290 | [tewus@safetygrip.co.za](mailto:tewus@safetygrip.co.za) | [www.safetygrip.co.za](http://www.safetygrip.co.za)





# GROUNDBREAKING STUFF

Helping you move the earth with our Boron Heat-Treated Cutting  
Edges and Cast End Bits, *Giving You Extra Wear Life!*

*We manufacture & supply the full range of  
Bulldozer Cutting Edges & End Bits.*



Our countrywide distribution network with a presence in all major  
centres ensures that no matter where you are, we are there with  
the right parts to keep you moving the earth.



Tel: +27 11 793 6838 | Fax: +27 11 793 6626  
Web: [www.rocktech.co.za](http://www.rocktech.co.za) | Email: [derek@rocktech.co.za](mailto:derek@rocktech.co.za)

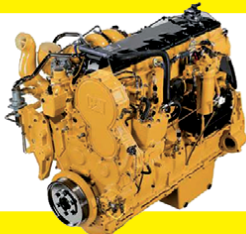
**ROCKTECH**  
ROCKTECH ESIZAYO AFRICA (PTY) LTD



# INDUSTRIAL PLANT SOLUTIONS



## ENGINES



## TRANSMISSION



## FINAL DRIVES



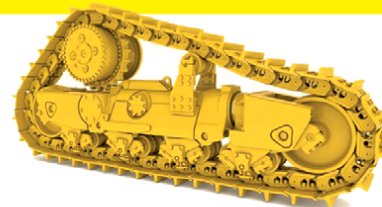
## PUMPS



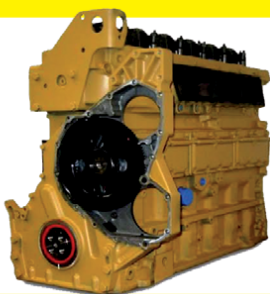
## BUCKETS



## MISCELLANEOUS



## SUB ASSEMBLIES



C4.4 LongBlock  
3116 Longblock  
C11 Longblock  
D8R Longblock  
C15 Short Sub

## CRANKSHAFTS ORIGINAL



C7 Crankshaft  
C9 Crankshaft  
C11 Crankshaft  
C13 Crankshaft

## D8R/T ORIGINAL



D8R Engine  
D8R Final Drives  
D8R Torque Converter  
D8T Torque Converter

# AVAILABLE ON THE FLOOR NOW!

New, used and reconditioned components - all makes.

If it's from your machine, we'll find a replacement!!

### Contact Us:

✉: [sales@ipsglobal.net](mailto:sales@ipsglobal.net)

📘: [facebook.com/IndustrialPlantSolutions](https://facebook.com/IndustrialPlantSolutions)



WhatsApp Message  
+27 (0)82 405 3494

## Inspections & Assessments Also Done





**Jason Ward**  
+27 83 412 1077  
[jason@sa-ems.co.za](mailto:jason@sa-ems.co.za)



**1 X 1988 CATERPILLAR 140G**  
READY TO WORK



**1 X 2014 CATERPILLAR TH414**  
6500 HOURS



**1 X 2012 DOOSAN DX140**  
9000 HOURS



**1 X 2011 CATERPILLAR 428E**  
4800 HOURS



**1 X 2018 BELL 315SL**  
1900 HOURS - VERY NEAT UNIT



**1 X 2018 BELL 315SL**  
1900 HOURS - VERY NEAT UNIT





**Jason Ward**  
+27 83 412 1077  
[jason@sa-ems.co.za](mailto:jason@sa-ems.co.za)



**1 X 2008 MANITOU 1830**  
6500 HOURS - EXCELLENT CONDITION



**1 X 2020 DOOSAN DX140**  
76 HOURS - LIKE NEW



**1 X 1994 DYNAPAC 12 TON ROLLER**  
WORKING ORDER



**1 X 2015 CATERPILLAR AP600**  
ASPHALT PAVER - 1400 HOURS



**1 X 2016 JCB 3CX**  
3300 HOURS - VERY NEAT UNIT



**1 X 2018 VÖGELE PAVER 1603**  
256 HOURS - EXCELLENT CONDITION





## GREEN SHOOTS IN MINING INDUSTRY THREATENED BY GLOBAL SHORTAGE OF LARGE EQUIPMENT

**MHS Plant & Equipment** offers a unique global disposal and procurement service for major mining houses

Disruptions in global supply chains due to the ongoing Covid-19 pandemic has resulted in a shortage of large mining equipment being produced by major Original Equipment Manufacturers (OEMs). “For example, the lead time on 100 t rigid dump trucks and larger has now been pushed to 2022,” comments Conrad Smith, owner and founder of disposal and procurement expert MHS Plant & Equipment. This means that major mining houses are faced with a potential procurement crunch as the commodity cycle picks up again, placing a potential constraint on any expansion or new project plans at a time when the industry needs it the least.

Another concern is that many mining houses are sitting with redundant or surplus fleet that they are struggling to get rid of in the current economic environment. The traditional route of approaching auction houses or going out to tender is not the ideal solution in this regard, highlights Smith. “We offer a complete turnkey solution whereby we can come in and evaluate any redundant equipment, albeit scrapped or still running, and resell it through our global network of contacts.”

Alternatively, if a mining house is on the lookout for a particular machine and is being thwarted by a long lead time, it can approach MHS Plant & Equipment as well for a specific solution in this regard. With an international network established over 25 years, Smith and his team can source machines from anywhere in the world at the most competitive rates. The company’s ‘one-stop shop’ value proposition includes dismantling and rigging, shipping and transportation and reassembly at the required destination. “Our key differentiator in this niche market is our capability to be able to offer immediate short-term solutions to these problems confronting the global mining industry right now,” points out Smith. “As opposed to waiting a year for new rigids, for example, rather approach us and we can source it for you anywhere in the world at a cost-competitive rate. This limits any potential downtime for a mining operation, which stands to lose millions due to any disruption in productivity as a result of equipment shortages.”

Smith warns that the shortage is being compounded by local OEMs also reducing their stock and parts inventory due to the impact of Covid-19 on the global economy. However, with the mining industry at last starting to show some green shoots, miners need to put their procurement plans in place as early as possible in order to be in a position to take advantage of the upturn. This is critical, especially due to an estimated 30% to 50% reduction in the output from yellow metal equipment manufacturers globally, with limited numbers of new units especially in the larger size ranges.

An example of the complete solutions approach offered by MHS Plant & Equipment is a package deal it is putting together at present for Barrick Gold Corporation in Zambia. This includes 100 t rigids, 120 t excavators and loading tools, 16H graders and Cat D10T dozers. “We handle the sale, export, transport, insurance and assembly on-site with commissioning of all the equipment upon delivery,” concludes Smith.

**MHS Plant & Equipment Contact | Conrad Smith - Phone: +27 10 500 6193 | Email: [info@mhsplant.co.za](mailto:info@mhsplant.co.za)**  
**Web: [www.mhsequipment.com](http://www.mhsequipment.com)**





## Mobicon container handlers are used for safe and efficient materials handling in the steel sector

Mobicon container handlers have been used in the global steel industry for over 15 years, to enhance the efficiency and safety of handling components, like steel reinforced bars. Companies specialising in the manufacture of steel for reinforced concrete, traditionally face three major challenges – the safe loading of steel, efficient dispatch of product and the prohibitive costs of handling steel using conventional trailers.

“Mobicon straddle carriers, coupled with flat racks, provide a safe, convenient and cost-efficient solution to alleviate the problems of handling reinforced steel,” explains Ken Mouritzen, managing director, BLT WORLD. “In conventional handling, steel that comes off a bending or cutting machine, is transported by overhead crane to the dispatch area and then loaded onto a delivery vehicle.

“Loading steel on a vehicle bed that is 1.5 meters off the ground is dangerous and if the vehicle is not ready to be loaded, the steel is placed on the ground to wait for the next available vehicle. Disadvantages of this system include double handling, the need for a large area of ground space and extended crane hours. As a consequence, production may need to stop or slow down, until the steel has been safely loaded, to make space in the dispatch area for more steel. “Mobicon straddle carriers are fitted with flat racks that are loaded with steel that comes straight from production. This handling system is highly efficient. - the Mobicon can safely lift over 1,6 m loads, which are transported to the dispatch area and placed onto a delivery vehicle.

“When a vehicle returns from doing a delivery, the Mobicon takes the empty flat rack off the vehicle and places the next loaded flat rack onto the vehicle. The Mobicon returns empty flat racks to the storage area for neat stacking. The delivery vehicle's turnaround time is minimal, which means it can do more deliveries each day.

“So basically, the Mobicon and flat rack system becomes a buffer between the production and transport sections of a steel business, allowing manufacturers to get volume safely out the door, without disruption. “There are many benefits of using the Mobicon system – flat racks are cheaper than trailers and empty flat racks can be stacked to save space. For improved safety, loading is done on ground level, there is no need for double handling and production is not interrupted.”

In all Mobicon designs, these main principles are always upheld – safe and efficient handling, no damage to the yard surface and controlled movement of the load, which is achieved by rigid lift arms or a guided spreader. The risk of the flat rack swinging or falling is prevented by a rigid, secure connection. Flat racks for the Mobicon are available in various sizes from 6 to 12 m and can be modified to include safety rails and tie down points. The Mobicon and flat racks can be supplied as a turn-key package.

Mobicon straddle carriers – key machines in BLT WORLD's range of container handling equipment - increase operational efficiency and reduce demurrage costs for trucks waiting to be loaded and unloaded. These mobile container handlers have excellent manoeuvrability and move loads efficiently around sites, through warehouse doors, effectively taking the container to the stack or the receiving point. Other advantages include easy handling of ramps and speed bumps, faster container handling times in all weather conditions and minimal damage to contents normally caused by long lift truck runs. These versatile machines are used efficiently in many industries, including transport and logistics, food and beverage production, agriculture and warehousing. View the Youtube link <https://youtu.be/4yZ8yHrkCKs>

**For further information Ken Mouritzen, Managing Director, BLT WORLD**  
PO Box 12392, Jacobs, 4026 Telephone+27 31 274 8270 Email [ken@bltworld.com](mailto:ken@bltworld.com) Web [www.bltworld.com](http://www.bltworld.com)





## SHUMANI LOOKS TO DIVERSIFY INTO MINING, CONSTRUCTION INDUSTRY

**Largest black-owned and managed industrial equipment supplier is an appointed dealer for the Goscor Group**

As one of the biggest industrial equipment suppliers into the food and beverage industry, this remains the main target market for Shumani Industrial Equipment. However, the company aims to diversify and is investigating some opportunities in the mining industry, reveals MD Victor Nemukula. "There is a possibility to supply equipment like front end loaders, articulated dump trucks and excavators to PGM mining companies in the Rustenburg area, for example."

Now the largest black-owned and managed industrial equipment supplier in South Africa, Shumani is an appointed dealer for all Goscor Group companies that import industrial equipment for the South African market. It supplies world-class equipment across the breadth of the industrial and construction sectors.

Brands on offer include world-leading names like Bendi, Crown, Kalmar and Doosan in the forklift market. Construction equipment brands include Bobcat, Sany, HPower, Weima, Luthian, Ozen and Sullair. In the cleaning equipment market segment, Shumani offers Tennant, Genie, Sentinel and HighPoint.

Shumani has a full complement of technicians, most of whom are based at its client sites. These technicians provide maintenance on customer equipment, ensuring that Shumani delivers a guaranteed uptime of 95% for maximum productivity.

Nemukula comments that the materials-handling and logistics sector remains resilient and has improved significantly in 2021. As a result, Shumani has seen strong growth in 2021 and even expects this to continue into 2022, highlights Nemukula.

As the largest industrial equipment supplier into the food and beverage industry, this remains the main focus for Shumani at present. However, the mining industry is also riding high on the back of rising commodity prices. Most of the equipment supplied by Shumani is used in the stores and logistics departments of both construction and mining companies. "We are set on competing in this space as well, as we have a significant value proposition to offer," concludes Nemukula.

### Shumani Contacts:

Victor Nemukula / Managing Director

Phone: 0861 748 6264 / Cell: 079 873 9163 / Email: [vnemukula@shumani-industrial.co.za](mailto:vnemukula@shumani-industrial.co.za)

Web: [www.shumani-industrial.co.za](http://www.shumani-industrial.co.za)

Shaun Morton / Operations Director

Phone: 0861 748 6264 / Cell: 082 894 6033 / Email: [smorton@shumani-industrial.co.za](mailto:smorton@shumani-industrial.co.za)

Web: [www.shumani-industrial.co.za](http://www.shumani-industrial.co.za)



## MWS EQUIPMENT ANNOUNCES USA PARTNER



Shane Fleming (Left) and Brendan Fox, Rock and Recycling Equipment, LLC

### Rock & Recycling appointment strengthens MWS rapid global expansion

Mobicon container handlers have been used in the global steel industry for over 15 years, to enhance the efficiency and safety of handling components, like steel reinforced bars. Companies specialising in the manufacture of steel for reinforced concrete, traditionally face three major challenges – the safe loading of steel, efficient dispatch of product and the prohibitive costs of handling steel using conventional trailers.

“Mobicon straddle carriers, coupled with flat racks, provide a safe, convenient and cost-efficient solution to alleviate the problems of handling reinforced steel,” explains Ken Mouritzen, managing director, BLT WORLD. “In conventional handling, steel that comes off a bending or cutting machine, is transported by overhead crane to the dispatch area and then loaded onto a delivery vehicle.

“Loading steel on a vehicle bed that is 1.5 meters off the ground is dangerous and if the vehicle is not ready to be loaded, the steel is placed on the ground to wait for the next available vehicle. Disadvantages of this system include double handling, the need for a large area of ground space and extended crane hours. As a consequence, production may need to stop or slow down, until the steel has been safely loaded, to make space in the dispatch area for more steel. “Mobicon straddle carriers are fitted with flat racks that are loaded with steel that comes straight from production. This handling system is highly efficient. - the Mobicon can safely lift over 1,6 m loads, which are transported to the dispatch area and placed onto a delivery vehicle.

“When a vehicle returns from doing a delivery, the Mobicon takes the empty flat rack off the vehicle and places the next loaded flat rack onto the vehicle. The Mobicon returns empty flat racks to the storage area for neat stacking. The delivery vehicle’s turnaround time is minimal, which means it can do more deliveries each day.

“So basically, the Mobicon and flat rack system becomes a buffer between the production and transport sections of a steel business, allowing manufacturers to get volume safely out the door, without disruption. “There are many benefits of using the Mobicon system – flat racks are cheaper than trailers and empty flat racks can be stacked to save space. For improved safety, loading is done on ground level, there is no need for double handling and production is not interrupted.”

In all Mobicon designs, these main principles are always upheld – safe and efficient handling, no damage to the yard surface and controlled movement of the load, which is achieved by rigid lift arms or a guided spreader. The risk of the flat rack swinging or falling is prevented by a rigid, secure connection. Flat racks for the Mobicon are available in various sizes from 6 to 12 m and can be modified to include safety rails and tie down points. The Mobicon and flat racks can be supplied as a turn-key package.

Mobicon straddle carriers – key machines in BLT WORLD’s range of container handling equipment - increase operational efficiency and reduce demurrage costs for trucks waiting to be loaded and unloaded. These mobile container handlers have excellent manoeuvrability and move loads efficiently around sites, through warehouse doors, effectively taking the container to the stack or the receiving point. Other advantages include easy handling of ramps and speed bumps, faster container handling times in all weather conditions and minimal damage to contents normally caused by long lift truck runs. These versatile machines are used efficiently in many industries, including transport and logistics, food and beverage production, agriculture and warehousing. View the Youtube link <https://youtu.be/4yZ8yHrkCKs>

**For further information Ken Mouritzen, Managing Director, BLT WORLD**

**PO Box 12392, Jacobs, 4026 Telephone+27 31 274 8270 Email [ken@bltworld.com](mailto:ken@bltworld.com) Web [www.bltworld.com](http://www.bltworld.com)**







# earthbroker

**your sourcing solution for new & used equipment & machinery**

- Why deal with different people each month when you can deal with the same friendly people you always deal with.
- We are proudly South African. Support your country who understand your needs.
- WE are ABC Accredited - this means we do print the amount we say we print. No pie in the sky number. We send direct to the correct people in the industry.
- We have our PAMMS certificate...This means our database has been checked and validated.
- Your advert receives FREE online exposure on our website with our online magazine and the link to the magazine is on our App, Facebook, Instagram and LinkedIn.
- We design FREE of charge and all changes are done FREE of charge.
- NO contracts to be signed.  
*(Just a full calendar months notice is required for cancellation)*



Audit Bureau of Circulations  
of South Africa



**We have an  
online magazine  
in which your  
advert is  
advertised free  
of charge**

**We offer excellent service and design.**

Should you have people/companies you would like added to our database, we will happily do that should they not already be on our database.

**Please call us for a prompt response and great service!**



For further info on how to get your company listed in the Earthbroker please call...**Janine - 083 456 4027**



## HITACHI EX75

**R250 000,00 + VAT**

Dewald Hattingh: +27(0) 72 547  
2198 +27(0) 11 973 3737  
info@atlasmasjiene.co.za



## HADFILEDS 36X26 JAW CRUSHER

Rebuilt

TIM MARSAY +27 83 654 4248  
PATRICK MARSAY +27 79 187 7937  
tim@marsayequip.co.za  
www.marsay.co.za



## ATLAS-COPCO D65 SMARTROC

2015 model  
refurbished  
Call for Price

THOMAS MITTAG  
072 545 6223  
info@mae-equipment.com  
www.mae-equipment.com



## VARIOUS CEMENT SILOS

IN VERY GOOD  
CONDITION  
50,60,80 & 100 TONS

TIM MARSAY +27 83 654 4248  
PATRICK MARSAY +27 79 187 7937  
tim@marsayequip.co.za  
www.marsay.co.za



## 1 X MERCEDES BENZ ATEGO 1517 8000L DIESEL BOWSER

Year Model: 2000  
KM Reading: 48232

Karen van Zyl - 011 964 1179  
info@bulkmachine.co.za



## CATERPILLAR 924G

**R550 000,00 + VAT**

Dewald Hattingh: +27(0) 72 547  
2198 +27(0) 11 973 3737  
info@atlasmasjiene.co.za



## CAT 773F WATER BOWSER

2008 model  
option to Dump-Truck  
Call for Price

THOMAS MITTAG  
072 545 6223  
info@mae-equipment.com  
www.mae-equipment.com



## CAT 773E DUMP-TRUCK

2003 model  
low hours  
Call for Price

THOMAS MITTAG  
072 545 6223  
info@mae-equipment.com  
www.mae-equipment.com



## ATLAS-COPCO D65 SMARTROC

2017 model  
refurbished  
Call for Price

THOMAS MITTAG  
072 545 6223  
info@mae-equipment.com  
www.mae-equipment.com



## CATERPILLAR 320C

**R670 000,00 + VAT**

Dewald Hattingh: +27(0) 72 547  
2198 +27(0) 11 973 3737  
info@atlasmasjiene.co.za

For further info on how to get your company listed in the Earthbroker please call...**Janine - 083 456 4027**



For further info on how to get your company listed in the Earthbroker please call...Janine - 083 456 4027



## ATLAS-COPCO DM30-MK2

2018 model  
ready for production  
Call for Price

THOMAS MITTAG  
072 545 6223  
info@mae-equipment.com  
www.mae-equipment.com



## KOMATSU D375A-6

2011 model refurbished &  
new undercarriage  
Call for Details

THOMAS MITTAG  
072 545 6223  
info@mae-equipment.com  
www.mae-equipment.com



## 1 X BELL 850J DOZER

Year Model: 2018  
Hours (SMR): 6112

Karen van Zyl - 011 964 1179  
info@bulkmachine.co.za



## MERC 2628 ATEGO 14000 LITRE TANKER

Contact Stuart Mckenzie  
Tel: 033 212 2181  
Cell: 082 558 7901  
Email: sjm@mckenzieplant.co.za



## NEW KAROO MOBILE DRY BATCHING PLANT

TIM MARSAY +27 83 654 4248  
PATRICK MARSAY +27 79 187 7937  
tim@marsayequip.co.za  
www.marsay.co.za



## KOMATSU PC350LC-8

Contact Stuart Mckenzie  
Tel: 033 212 2181  
Cell: 082 558 7901  
Email: sjm@mckenzieplant.co.za



## KOMATSU D375A-5

2008 model / "as is"  
or refurbished 2 units available  
Call for Price

THOMAS MITTAG  
072 545 6223  
info@mae-equipment.com  
www.mae-equipment.com



## CATERPILLAR 330D

R1 500 000,00 + VAT

Dewald Hattingh: +27(0) 72 547  
2198 +27(0) 11 973 3737  
info@atlasmasjiene.co.za



## BELL B20D 18000 LITRE WATERTANKER

R850 000,00 + VAT

Contact Stuart Mckenzie  
Tel: 033 212 2181  
Cell: 082 558 7901  
Email: sjm@mckenzieplant.co.za



## 1X 2018 JCB 3CX ECO (4X4) TLB

S/no: 2666891 / SMR: 1775 hours  
Fully enclosed air-conditioned cab.  
Power Train Guarantee.  
Price: R 800 000.00 + VAT.

Shawn Michell  
082 568 4033  
shawn@plantfinder.co.za

For further info on how to get your company listed in the Earthbroker please call...Janine - 083 456 4027



For further info on how to get your company listed in the Earthbroker please call...**Janine - 083 456 4027**



## 2 X HITACHI ZX330LC-5G HYDRAULIC EXCAVATORS

Year Model: 2017  
Hours (SMR): 9090 & 15 139

Contact Person:  
Neil Britz: +27 66 197 0178



## 1 X HITACHI ZX400LCH-5G HYDRAULIC EXCAVATOR

Year Model: 2016  
Hours (SMR): 14 880

Contact Person:  
Neil Britz: +27 66 197 0178



## 1X 2012 CAT 140K MOTOR GRADER

S/no: SZL01366 / SMR: 10925 hours.  
Fully enclosed air-conditioned cab.  
1 Owner, FSH.  
Power Train Guarantee.  
Price: R 1 850 000.00 + VAT.

Shawn Michell  
082 568 4033  
shawn@plantfinder.co.za



## CATERPILLAR 140H

R1 500 000,00 + VAT

Dewald Hattingh: +27(0) 72 547  
2198 +27(0) 11 973 3737  
info@atlasmasjiene.co.za



## 2 X HITACHI ZX330LC-5G HYDRAULIC EXCAVATORS

Year Model: 2017  
Hours (SMR): 9 173 & 15 539

Karen van Zyl - 011 964 1179  
info@bulkmachine.co.za

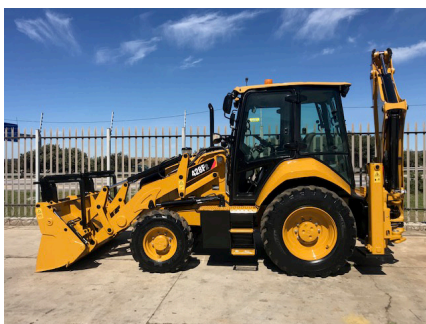


## 1X 2006 CAT D6R III TRACKED DOZER

S/no: TBC00156 / SMR: 8000 hours  
Fully enclosed ROPS Cab,  
Tilt Blade & Ripper.

Price: R 1 325 000.00 + VAT.

Shawn Michell  
082 568 4033  
shawn@plantfinder.co.za



## 1X 2017 CAT 428F2 (4X4) TLB

S/no: LYG02005 / SMR: 6160 hours.  
Fully enclosed air-conditioned cab.  
Power Train Guarantee.

Price: R 750 000.00 + VAT.

Shawn Michell  
082 568 4033  
shawn@plantfinder.co.za



## VOLVO A20C

R350 000,00 + VAT

Dewald Hattingh: +27(0) 72 547  
2198 +27(0) 11 973 3737  
info@atlasmasjiene.co.za



## CATERPILLAR 769

R750 000,00 + VAT

Dewald Hattingh: +27(0) 72 547  
2198 +27(0) 11 973 3737  
info@atlasmasjiene.co.za



## BELL B20C

Mechanically good condition.  
Very well priced.  
R145 000

Rodney  
0731039582  
rodney@marodew.co.za

For further info on how to get your company listed in the Earthbroker please call...**Janine - 083 456 4027**



For further info on how to get your company listed in the Earthbroker please call...Janine - 083 456 4027



## CATERPILLAR 277B

R350 000,00 + VAT

Dewald Hattingh: +27(0) 72 547  
2198 +27(0) 11 973 3737  
info@atlasmasjiene.co.za



## CATERPILLAR 16H

R2 500 000,00 + VAT

Dewald Hattingh: +27(0) 72 547  
2198 +27(0) 11 973 3737  
info@atlasmasjiene.co.za



## CATERPILLAR 140G'S

FROM  
R950 000,00 + VAT

Dewald Hattingh: +27(0) 72 547  
2198 +27(0) 11 973 3737  
info@atlasmasjiene.co.za



## 1 X HITACHI ZX470LC-5G HYDRAULIC EXCAVATOR

YEAR MODEL: 2013  
HOURS (SMR): 13563

Karen van Zyl - 011 964 1179  
info@bulkmachine.co.za



## 1X 2004 DAEWOO (DOOSAN) MEGA 300-V FRONT END LOADER

Serial no: 2025 / SMR: 9678 hours  
Fully enclosed air-conditioned cab.  
Power Train Guarantee.  
Price: R 700 000.00 + VAT.

Shawn Michell  
082 568 4033  
shawn@plantfinder.co.za



## BOMAG BW212

R300 000,00 + VAT

Dewald Hattingh: +27(0) 72 547  
2198 +27(0) 11 973 3737  
info@atlasmasjiene.co.za



## STRIPPING HITACHI 870/3

Good Runner stripping for  
spares. Parts still in excellent  
condition.

Rodney  
0731039582  
rodney@marodew.co.za



## SUB ASSEMBLIES

C4.4 LONGBLOCK  
3116 LONGBLOCK  
C11 LONGBLOCK  
D8R LONGBLOCK  
C15 SHORT SUB

WhatsApp Message  
+27 (0)82 405 3494  
sales@ipsglobal.net



## BELL 1906 WITH FORKS

R320 000,00 + VAT

Dewald Hattingh: +27(0) 72 547  
2198 +27(0) 11 973 3737  
info@atlasmasjiene.co.za

For more info on advertising your  
machine or spares in the classifieds  
please call Janine on 083 456 4027  
janine@earthbroker.co.za

For further info on how to get your company listed in the Earthbroker please call...Janine - 083 456 4027



## Agriculture / Forestry

Bell Equipment  
Filter Centre  
LNE Agri-Earth  
Manitou South Africa

## Attachments

CTC Plant Company (PTY) Ltd  
Plant Finder  
Rhino Excavator Hammers

## Buckets

INMINE - Inala mining services  
Industrial Plant Solutions  
Paramount Equipment  
Rocktech  
STM Mining  
Wearpact

## Crushing

Kemach McCloskey  
Marsay Equipment

## Dyno Testing

Earthmoving Specialist  
Mzantsi Transmissions  
Power Transmission Technology

## Exhausts

Rustpet Exhausts

## Engineering

All Africa Supplies  
C & J Earthmoving Repairs  
Earthmoving Specialist  
Earthmach  
East Coast Gears  
Gears for Africa  
New Beginning Designs  
P&R Earthmoving

## Gearbox / Transmissions

East Coast Gears  
Mzantsi Transmissions  
P&R Earthmoving  
Power Transmission Technology  
Sintech  
Vortex Transmissions

## Gears

East Coast Gears  
Gears for Africa

## G.E.T / Undercarriage

Blumaq  
Centrax  
ESP  
ITR Africa  
Industrial Plant Solutions  
Mid Plant Services  
P&R Earthmoving  
Paramount Equipment  
Rocktech  
Spec-Cast Wear Parts  
STM Mining  
Tractor Grader Spares  
Wearpact

## Hydraulics

Industrial Plant Solutions  
Mid Plant Services  
P&R Earthmoving  
Power Transmission Technology  
One Stop Procurement

## Lifting Equipment

Liugong

## Lubricants & Oils

Bell Equipment  
Earthmach  
Filter Centre

## Machine Hire

AmPlant  
BLC Plant Company  
Bulk Machine Hire  
Rhino Excavator Hammers

## New Machines

Bell Equipment  
Earthmach  
Liugong  
Manitou South Africa  
Kemach McCloskey

## New Parts

Bell Equipment  
Blumaq  
C & J Earthmoving Repairs  
CTC Plant Company  
Centrax  
East Coast Gears  
ESP



## New Parts

Filter Centre  
 ITR Africa  
 Industrial Plant Solutions  
 LNE Agri-Earth  
 Manitou South Africa  
 Kemach McCloskey  
 Mid Plant Services  
 One Stop Procurement  
 Prime Plant  
 P&R Earthmoving  
 Paramount Equipment  
 Rhino Excavator Hammers  
 Rustpet Exhausts  
 Shin-Li Trading  
 Spec-Cast Wear Parts  
 STM Mining  
 Shin-Li Trading  
 Sintech  
 Tractor Grader Spares  
 Wearpact  
 WEICHI SEM Parts

## Pumps

All Africa Supplies  
 Blumaq  
 C & J Earthmoving Repairs  
 Industrial Plant Solutions  
 Mid Plant Services  
 Shin-Li Trading

## Seats / Upholstery

The Seat Connection

## Services

Bell Equipment  
 C & J Earthmoving Repairs  
 CTC Plant Company  
 Dura Sales  
 Earthmach  
 Gears for Africa  
 INMINE - Inala mining services  
 ITR Africa  
 LNE Agri-Earth  
 Power Transmission Technology  
 Prime Plant  
 Marsay Equipment  
 Mid Plant Services  
 RC Investments  
 Vortex Transmissions

## Turbos

Industrial Plant Solutions  
 Turboworks  
 Turbo Direct

## Torque Convertors

ITR Africa  
 Industrial Plant Solutions  
 One Stop Procurement  
 Sintech

## Tyres

Associated Equipment / Vendel Civils  
 Safety Grip

## Used Machines

Atlas Masjiene  
 All Africa Supplies  
 AmPlant  
 Associated Equipment / Vendel Civils  
 BLC Plant Company  
 Bulk Machine hire  
 CTC Plant Company  
 Dozer  
 Dura Equipment Sales  
 Earthmach  
 Earthmoving Machine Sales  
 INMINE - Inala mining services  
 Mae Equipment  
 Manitou South Africa  
 Marsay Equipment  
 McKenzie Plant Sales  
 Mid Plant Services  
 P&R Earthmoving  
 Paramount Equipment  
 Phemba Equipment  
 Plant Finder  
 STM Mining Equipment  
 Transand  
 WEICHI SEM Parts

## Used Parts

All Africa Supplies  
 Bell Equipment  
 BLC Plant Company  
 Bulk Machine Hire  
 C & J Earthmoving Repairs  
 Dozer  
 Dura Parts  
 East Coast Gears  
 Earthmoving Machine Sales  
 Earthmoving Specialist  
 ITR Africa  
 INMINE - Inala mining services  
 Industrial Plant Solutions  
 Mid Plant Services  
 P&R Earthmoving  
 Paramount Equipment  
 Phemba Equipment  
 Prime Plant  
 RC Investments  
 STM Mining Equipment  
 Shin-Li Trading  
 Turboworks  
 WEICHI SEM Parts



# earthbroker

**your sourcing solution for new & used equipment & machinery**

The Earthbroker is published monthly and 5400 copies are sent to all the mines, quarries, and all companies dealing with earthmoving and construction in South Africa, Africa and some overseas countries.

We are **ABC accredited** and have our **Pamms certificate No: 2A8DD9F60574FFC2A4EEEE01A**.

We also have a website where anyone can view the magazine, which is updated monthly with the latest changes and advertisements. Please view our E-Mag on [www.earthbroker.co.za](http://www.earthbroker.co.za)

Our E-magazine is uploaded monthly to Facebook, Instagram, LinkedIn and our mobile App.

We accept about 5 editorials a month which we insert free of charge. Should you have an editorial which is relevant to the industry, we will gladly give it consideration.

For details of our prices on a full page, half page or quarter page, please phone me on 083 456 4027 or e-mail me at [janine@earthbroker.co.za](mailto:janine@earthbroker.co.za).

We do not ask anyone to sign a contract, however we do insist on a **full calendar month's notice** for cancellation.

Please note that all quotations exclude VAT. We do insertions, (own printing costs) at R1.50 each excluding VAT.

Classifieds at R500.00 excluding VAT for a business card size advertisement only.

**Janine Sargeant**  
(CELL)083 456 4027  
[janine@earthbroker.co.za](mailto:janine@earthbroker.co.za)

**Should you want to receive a free copy of our magazine  
please email your details to [janine@earthbroker.co.za](mailto:janine@earthbroker.co.za)**

## Conditions of Acceptance for advertising

### Adverts are subject to the following conditions:

1. Often we receive faxes with illegible letters or numbers. We accept no responsibility due to this.
2. We accept NO responsibility for errors in advertisements received telephonically.
3. We reserve the right to refuse placement or to place the advertisement/s as we see fit.
4. No responsibility will be taken for omission of advertisements, for any errors/colour-differences in advertisements or any results due to such errors.
5. We accept no responsibility for the quality of goods advertised. We merely bring buyers and sellers into contact with each other and we are not responsible for any results due to transactions made through the advertisements.
6. Please note one full calendar months written notice for cancellations.
7. Payment due prior to publication or interest will be charged.
8. There will be an annual increase of 10% at the beginning of each year.
9. The Earthbroker will not be held responsible for content of any advert inserted in our magazine.



COMPANY	BRANCH	DESIGNATION	CONTACT	TEL NO	CELL	EMAIL
Andru Mining	JHB	Sales	Naren Birdju	(011)395 0200 / +27 82 859 0766		plantsales@andru.co.za
Atlas Masjiene	JHB		Dewald Hattingh	+27(0) 72 547 2198 +27(0) 11 973 3737		info@atlasmasjiene.co.za
Atlas Service Centre	JHB		Fourie Von Tonder		083 301 1632	
Action Equipment Co	JHB	Sales	Yolanda	011 452 1298		yolanda@action.co.za
Africaplant.com	Newcastle	Sales	Mark	034 318 3032	082 301 3961	admin@aficaplant.com
Afritool – Rent	JHB		Karen Abrams	011 974 2819	082 523 9777	karen.abrams@fluor.com
Alf's Tippers JHB	Sales		Alf Ferreira	011 824 0013	083 260 6929	alfplant@global.co.za
All Africa Supplies	JHB		Jody Da Silva	011 918 9976		sales@allafricasupplies.net
Amplant	Polokwane		Eddie Simpson	015 293 1221	082 904 7694	simpson@amplant.co.za
Anric Enterprises	JHB		Ric de Nysschen	011 740 0975	082 647 9955	anric@cybertrade.co.za
Aquajet Profiles (Pty)Ltd	JHB	Director & Sales	Brad	011 908 5550	073 470 4958	info@aquajetprofiles.co.za
Arch Equipment	JHB		Greg Archibald		082 803 4227	archhire@mweb.co.za
Associated Equipment Co	JHB	Sales	Jaap	011 801 4911/2	082 892 1327	associated1@xnet.co.za
AVANT SA CPT			Wally	021 851 0722	076 688 3399	info@avantsa.co.za
Azrel Equipment	JHB	Sales	Mike Imrie	(010)590 8048	083 230 3118	mike@azrelequipment.com
B&B Plant / Unicrane	Empangeni		Bob Fogg	035 787 0679	082 570 5781	sales@bbplant.co.za
Barloworld Equipment Co				011 929 0000		
Barloworld Equipment Co	Durban	Parts	Brett Woodhouse	031 705 8500	071 484 1035	bwoodhouse@barloworld-equipment.com
Barloworld Equipment Co	Durban	Parts	R. Haripersadh	031 705 8500		rharipersadh@barloworld-equipment.com
Barloworld Equipment Co	Newcastle	Parts	Milan Pather	034 315 2847	073 971 2046	mpather@barloworld-equipment.com
Barloworld Equipment Co	Newcastle	Sales	Brendan Moore	034 315 2847	073 781 8865	
Barloworld Equipment Co	Richardsbay	CRS	Rolfe Botes	035 797 6300	082 904 9619	jhumphries@bw-eq.com
Barloworld Equipment Co	Bloemfontein	Sales	Quentin Coetzee	051 4091200	078 460 2622	qcoetzee@barloworld-equipment.com
Bell Equipment	Richards Bay	Parts	Jackie Smith	035 907 9111	082 550 8791	bellparts@bell.co.za
Bell Equipment		Sales	Andrew Pretorius	011 928 9700	071 607 3978	partssales@bell.co.za
Bell Equipment	JHB	Used Parts	Fazel Patel	011 928 9700		usedparts@bell.co.za
Bell Equipment	JHB	Machine Sales	Myburgh	011 928 9700		sales@bell.co.za
Bert's Bricks (Pty)Ltd	Potchefstroom	Sales	Lizelle	(018)292 1615		marketing@bertsbricks.co.za
BKB Van Wyk	JHB			017 712 2132		vanwykinfo@telkomsa.net
Blumaq	JHB		John Beukes	011 966 5092		john.beukes@blumaq.com
BLC Plant Company	JHB	Machine Sales	Luigi Stravino	011 555 2000	082 552 7017	luigistravino@blcplant.com
BLC Plant Company	JHB	Machine Sales	Paolo Stravino	011 555 2000	082 852 3721	paolostravino@blcplant.com
BLC Plant Company	JHB	Machine Sales	Andrew McCall	011 555 2000	082 256 0334	andrewmccall@blcplant.com
BLC Parts	JHB	Parts Sales	Robbie Stocks	011 555 2000	082 492 9263	
BLC Parts	JHB	Sales	Mike du Plessis	011 555 2000	082 508 2908	mikeduplessis@blcplant.com
BLC Parts	JHB	Sales	Michael Marriott	011 555 2000	082 905 8983	michaelmarriott@blcplant.com
BMH Trading International	Cape Town		Bradley	021 903 2667	082 780 0084	bradley@bmhtradinginternational.com
Bom-mach / Stampede	JHB	Sales	Jabu	011 394 5704		info@stampede.co.za
Bruforce	JHB		Craig	011 393 1298	083 627 2533	bruforce@lantic.co.za
Bulk Machine Hire	Bapsfontein	Sales	Neil Britz	066 197 0178		karen@bulkmachine.co.za
Burgers Equipment & Spares			Anka Burger	011 979 3636		admin.za@burgersafrica.com
C & J Earthmoving Repairs	JHB			011 025 9336	079 888 6071	mikecearth@gmail.com
Caldas Engineering & Manufacturing	JHB	Marketing	Melanie	011 453 7797		info@caldas.co.za
Capital Equipment Parts	JHB		Mark	011 568 4215		info@capiparts.co.za
Catech Engineering	JHB		Lee Bray	071 687 9274		lee@cattam.co.za
Centrax	JHB	Sales	Trevor	011 392 5055	083 608 5550	trevor@centraxsa.co.za
Centrax	JHB	Sales	Renier Olivier	086 123 6872	083 321 8106	renier@centraxsa.co.za
Centrax	DBN	Sales	Steve	086 123 6872	083 613 0664	steve@centraxsa.co.za
Cranes Direct	Boksburg	Parts Sales	John Thage	011 894 8056	083 254 4068	john@cranesdirect.co.za
Cranes Direct	Boksburg	Sales	Mark Le Roy	011 894 8056	083 233 2140	mark@cranesdirect.co.za
CTC Plant Company	Cape Town	Owner	Colin McOwen	021 386 4190	082 440 4806	colin@ctcplant.co.za
CTC Plant Company	Cape Town	Sales	Evert Jooste	021 386 4190	082 825 8865	evert@ctcplant.co.za
CTC Plant Company	Cape Town	Sales	Peter Groenewald	021 386 4190	072 368 5581	peterg@ctcplant.co.za
CTC Plant Company	Cape Town	Sales	Mark Walker	021 386 4190	082 441 2446	markw@ctcplant.co.za
CTC Plant Company	Cape Town	Sales	Robert Freeman	021 386 4190	079 500 3940	robert@ctcplant.co.za
CTC Plant Company	Cape Town	Parts	Mark Swanepoel	021 386 4190	082 825 6966	marks@ctcplant.co.za
CTC Plant Company	Cape Town	Parts	Nico Vermeulen	021 386 4190	084 525 6966	nic_v@ctcplant.co.za
CTC Plant Company	Cape Town	Service	Olla van den Heever	021 386 4190	082 467 1894	olla@ctcplant.co.za
CTC Plant Company	Cape Town	Transport	Ian Geyser	021 386 4190	082 440 5861	ian@ctcplant.co.za
CTC Plant Company	Cape Town	Transport	Shaun Haman	021 386 4190	082 495 2640	shaun@ctcplant.co.za
DBZ Diesel Parts	JHB			087 751 4555	074 106 2158	jhb@dbzdiesel.com
DBZ Diesel Parts	Cape Town		Jason Martincich	021 556 6502	082 353 5971	jason@dbzdiesel.com
DBZ Diesel Parts	Durban			031 564 8091/2	082 565 8446	durban@dbzdiesel.com
D- MAN SALES	JHB	Sales	Wessels		072 172 7718	wessels@lpss.co.za
Deutz Diesel Engines	Meadowdale		Johan Reiners	(011)974 3549	082 457 1542	mierc@icon.co.za
Deutz Diesel Power	Durban	Branch manager	Nivern Pather	031 700 2384	082 375 4912	nivern@deutz.co.za
Deutz Diesel Power	JHB		Nathan Kitchen	011 923 0600		nathan@deutz.co.za
DGI Trading	JHB		Henk Arnold	010 065 0888	083 233 0019	henk.arnold@dgitrading.co.za
Dirt Diggers	JHB		Vic Viljoen	011 023 6674	082 822 3915	vicv@merchantwest.co.za



**“The man who stops advertising  
to save money is like the man  
who stops the clock to save time.”  
- Thomas Jefferson -**

In difficult economic times one should put more effort into promoting  
your business, your services and your products.

Cutting back on your advertising will ensure that your business loses ground  
to competitors who know and understand this.



COMPANY	BRANCH	DESIGNATION	CONTACT	TEL NO	CELL	EMAIL
Dosco Hydraulic Eng. cc	Montague Gardens		David Laubscher	021 551 2283	082 579 6465	david@doscocape.co.za
Dosco Hydraulic Eng. cc	Montague Gardens		Mike Hart	021 551 2283	082 228 5031	
Dozer	JHB		Graeme	011 452 1224		info@dozer.co.za
Dozer	JHB	Specialized Sales	Chris Cronje	011 452 1224	082 491 5472	info@dozer.co.za
Dura Equipment	JHB	Sales	Prinsloo Munro	011 918 4760	071 611 7281	prinsloo@durasales.co.za
Dura Equipment	JHB	Sales	Ernest Human	011 918 4760	079 874 5458	ernest@durasales.co.za
Dura Equipment	JHB	Sales	Jerry van Niekerk	011 918 4760	082 895 5611	durasales.co.za
Dura Equipment	JHB	Sales	Coenie Albertyn	011 918 4760	083 251 8046	coenie@durasales.co.za
Dura Equipment	JHB	Sales	Curtis Brown	011 918 4760	083 258 5784	curtis@durasales.co.za
Dura Equipment	Cape Town	Sales	Pottie Potgieter	021 988 6618	083 600 0729	pottie@durasales.co.za
Dura Equipment	Cape Town	Sales	Gerrie du Randt	021 988 6618	082 950 7040	gerrie@durasales.co.za
Dura Equipment	Cape Town	Sales	Charmaine Lombard	021 988 6618	082 777 1544	charmaine@durasales.co.za
E&A Spares	Durban	Sales	Deva	031 700 5791/2	082 659 5521	easpares@iafrica.com
Earth Mach	Mpumalanga		Chris	017 843 2072	083 232 8713	chris@earthmach.co.za
Earth Moving Plant & Trans.	Pinetown		Richard	031 705 1770	083 777 0152	richard@ept.co.za
EHD Johannesburg		Sales	Lodewyk van As	011 870 5000		ehd@ehd.co.za
Earthmoving Machine Sales	KZN	Sales	Jason	031 777 1025	083 412 1077	jason@sa-ems.co.za
East Coast Gears	KZN	Sales	Johan	031 701 3500	084 244 3324	eastcoastgears@gmail.com
ELB Equipment				011 306 0700		elb@elbequipment.co.za
Equipment Parts & Engines	Isando	Managing member	Attie vd Bergh	011 571 9000	082 655 9276	info@equipmentparts.co.za
ESP	Isando	Div Manager	Gary Wright	011 398 1700	082 449 6773	garyw@espa.co.za
ESP	Benoni	Div Manager	Adrian Erasmus	011 845 2911	083 449 0519	adriane@espa.co.za
ESP	Pretoria	Reg Manager	Willie v.d Merwe	012 804 6706	082 789 0828	williev@espa.co.za
ESP	Middelburg	Div Manager	Leon Bezuidenhout	013 246 2520	083 778 9877	leonb@espa.co.za
ESP	Pinetown	Reg Manager	Shaun Clarke	031 705 4200	082 413 1103	shaunc@espa.co.za
ESP	Cape Town	Reg Manager	Jaco Bekker	021 945 1030	072 384 4901	jacob@espa.co.za
ESP	Port Elizabeth	Branch Supervisor	Rainier Gerber	041 484 4575	083 698 1805	rainierg@espa.co.za
ESP	Bloemfontein	Reg Manager	Craig Wansbury	051 432 4501	082 413 2708	craigw@espa.co.za
ESP	Kimberley	Branch Supervisor	Kingsley Olyn	053 831 8349	082 805 7558	kingsleyo@espa.co.za
Filter Centre	Pinetown	Manager	Viyen Maharaj	031 700 9074	076 727 3985	info@filtercentre.com
Filvent	Witbank		Bernard	013 656 2726		workshopmanager@filvent.co.za
Fluid Blast Engineering	JHB		George Slabbert		082 550 1385	fluid.blast@live.com
Force 8 CC	Cape Town		Justin Nicoll	021 535 1117	082 373 9802	info@force8.co.za
Full Blast Hydraulics	JHB		Andre Calitz	(011)900 3790		info@fullblasthydraulics.com
Fusion Torque Components	JHB	Director	Eldred Carstens	011 828 9023	083 460 6790	eldredfusion@telkomsa.net
Gears for Africa	JHB	Sales	Carl	011 824 2017		carl@gearsforafrica.co.za
Gears for Africa	CPT	Sales	Carl	021 577 1030		carl@gearsforafrica.co.za
GET Spares	JHB	Sales	Raymond	(011)397 5276	082 655 2301	sales@getspares.co.za
GET Spares	JHB	Sales	Freddy	(011)397 5276	082 604 0045	sales@getspares.co.za
GET Spares	JHB	Sales	Clyde	(011)397 5276	082 581 5152	sales@getspares.co.za
Gillroy	Durban		Rob Gillit	031 765 2745	083 661 2057	info@gillroyplant.co.za
G-Man Trading	JHB	Sales	Luke Jr.	011 672 7011		lukej@gman.co.za
GO Industry - Dove Bid			John Cowing	0861 463 683	083 662 0237	john.cowing@liquidityservices.com
GR Spares	Pinetown	Sales	Gavin	031 705 5463	082 452 8690	grspares@webstorm.co.za
Grindright Engineering	Middelburg		Piet De Vos	013 246 2308	064 849 2320	grindright@gmail.com
HL Du Plooy	Harrismit		Hennie Du Plooy	082 719 8744	082 574 4212	hennie@hlduplooyplant.co.za
Heavy Duty Earthmoving Parts			Jannie Burger	011 394 4125/6/7		jannie@hdep.co.za
HPE Africa	Jet Park	Sales Manager	Lani	011 397 4670		marketing@hpeafrica.co.za
HPE Africa	Durban	Branch Manager	Adam Armitage	031 700 3426		Adam.armitage@hpeafrica.co.za
HPE Africa	East London	Branch Manager	Leon Dreyer	043 732 1428		leon.dreyer@hpeafrica.co.za
HPE Africa	Cape Town	Branch Manager	Gary Pnematicatos	021 905 0581/2		Gary.P@hpeafrica.co.za
Industrial Engine Parts	JHB	Sales	Morne	011 868 5436	082 851 7514	sales@ieppower.co.za
Industrial Plant Solutions	Natal		David Botha		083 405 3494	sales@ipsglobal.net
Imine Inala Mining Services	Witbank		Clement Van Der Merwe		082 414 1393	sales@imine.co.za
ITR Africa	Johannesburg	Sales Mgr - Nat	Carel Zwiegelaa	011 614 0070	076 874 7296	carel.zwiegelaa@itrafrica.com
ITR Africa	Johannesburg	Sales Mgr - U/C	Sean Smit	011 614 0070	072 271 6069	sean.smit@itrafrica.com
ITR Africa	Johannesburg	Sales Mgr - RP	Edwin Luttig	011 614 0070	076 570 0911	edwin.luttig@itrafrica.com
ITR South Africa	Johannesburg	Sales Mgr - Int	Michael Sanderson	011 614 0070	062 311 3376	michael.sanderson@itrafrica.com
ITR South Africa	Middelburg	External Sales	Rudi Le Roux	013 590 5614	083 500 3763	rudi.leroux@itrafrica.com
ITR South Africa	Kathu	External Sales	Mark Ingram	053 723 2245	082 759 2886	mark.ingram@itrafrica.com
ITR South Africa	Cape Town	Area Manager	Roy De Bruyn	021 905 7340	079 107 2112	roy.debruyn@itrafrica.com
ITR South Africa	Port Elizabeth	Area Manager	Roche Bester	041 451 2222	082 476 9667	roche.bester@itrafrica.com
ITR South Africa	East London	Area Manager	Shaun Smith	043 748 3541	079 948 2965	shaun.smith@itrafrica.com
ITR South Africa	Pinetown	Area Manager	Quintin Pillay	031 941 1133	079 492 4519	quintin.pillay@itrafrica.com
ITR South Africa	Bloemfontein	Area Manager	Jacques Billing	051 011 5620	082 928 1964	jacques.billing@itrafrica.com
ITR Namibia	Windhoek	Director	Hanjo Schierschmidt	+264 83 331 5160	+264 81 155 5539	hanjo.schierschmidt@itrafrica.com
ITR Zambia	Kitwe	Director	Andre Snyders	+260 96 351 3429	+260 96 351 3429	andre.snyders@itrafrica.com
J&T Earthmoving Maintenance	Kempton Park		Alex Savage		081 895 5583	alex@earthmovingmaintenance.co.za
Jacobs Transport	Vereeniging	Sales	Gys Jacobs	010 200 9946	083 544 0275	gys@jacobstransport.co.za
JBS Plant Hire	Klerksdorp		Tonie van den Heever	018 469 1016/7	083 654 7809	jvvdh@lantic.net
Johnson Taylor	JHB	Sales Manager	Graham	011 614 5122		graham@johnsonstf.co.za
JW Plant Hire and Sales	Welkom	Sales	Leon	057 355 1119	083 253 6110	j.w.plant@telkomsa.net
Kaltire			Jacques Roux	012 548 9327	083 777 9497	jacques_roux@kaltire.com
Kappa Engineering		Managing Director	Gerrie Visagie	011 828 5506/8	082 575 2199	gerrie@kappaeng.co.za
Kappa Engineering Procurement		Rebuild Director	Nathaniel Hauptfleisch	011 828 5506/8	082 928 6312	nathaniel@kappaeng.co.za
KDH Hydraulics	JHB		Ricus	011 762 9001/2	071 678 3746	ricus@kdhhydraulics.co.za
Kemach JCB	JHB			011 826 6710		sales@kemachjcb.co.za
Kemach JCB	Middleburg			013 244 1839		sales@kemachjcb.co.za
Kemach JCB	Pretoria			012 548 2956		sales@kemachjcb.co.za
Kemach JCB	Bloemfontein			051 432 3978		sales@kemachjcb.co.za
Kemach JCB	Durban			031 700 8278		sales@kemachjcb.co.za
Kemach JCB	Richards Bay			035 751 2718		sales@kemachjcb.co.za
Kemach JCB	CPT			021 949 7442		sales@kemachjcb.co.za



COMPANY	BRANCH	DESIGNATION	CONTACT	TEL NO	CELL	EMAIL
Kemach JCB	Port Elizabeth			041 453 1819		sales@kemachjcb.co.za
Kemach JCB	East London			043 732 1902		sales@kemachjcb.co.za
Kemach JCB	George			044 878 0366		sales@kemachjcb.co.za
Kemach JCB	Mthatha			047 531 1688		sales@kemachjcb.co.za
KHD Electrical			Delville Kuhn	011 392 4444		delville@khdiesel.co.za
Komatsu	Cape Town	Sales	Frederick van Ryneveld	021 951 1251	082 317 2849	info@komatsu.co.za
Komatsu	Bloemfontein	Sales	Ian Banham	051 434 2221/2		ian.banham@komatsu.co.za
Komatsu	Gauteng	Sales	Graeme Armstrong	011 923 1000		Graeme.Armstrong@komatsu.co.za
Komatsu	Gauteng	Sales	Karen van der Walt	011 923 1000		Karen.vanderWalt@komatsu.co.za
Komatsu	Gauteng	Sales	Francois Griesel	011 923 1000		Francois.Griesel@komatsu.co.za
Komatsu	Kimberley	Sales	Jaco Van Heerden	053 832 2061		jaco.vanheerden@komatsu.co.za
Komatsu	Pinetown	Sales	Jacques van der Sandt	031 710 4950	082 888 0995	info@komatsu.co.za
Komatsu	Port Elizabeth	Sales	George Hyman	041 452 6555	082 882 9576	george.hyman@komatsu.co.za
Komatsu	White River	Sales	Fortune Mathiba	013 758 9900	083 675 1756	Fortune.mathiba@komatsu.co.za
Komatsu	Wolmeransstad	Sales	Piet du Toit	018 596 2244	083 271 3567	info@komatsu.co.za
Komax Spares	JHB		Jacques	011 664 8828	082 616 1654	jacques@jsaearth.co.za
Komax Spares	JHB		Gawie	011 664 8828	082 650 0505	
Komax Spares	JHB		Danie	011 664 8828	076 222 2708	
Kruiper Spares	Port Elizabeth	Sales	Gary	041 585 6455	083 321 0819	kruiper@global.co.za
Kruiper Spares	Port Elizabeth	Sales	Bill	041 585 6455	082 569 2740	kruiper@global.co.za
Kruiper Spares	Port Elizabeth	Sales	Philip	041 585 6455	083 235 3919	kruiper@global.co.za
Landboupart	Isando			011 966 9200		info@landboupart.com
Lee's Dozers	JHB		Lee Bray	071 687 9274		leeb@leesdozers.co.za
Leo Hydraulics				011 976 1941		admin1@leohydraulics.co.za
LiuGong Machinery SA	JHB	Parts		011 979 3636		admin.za@burgersafrica.com
LNE Agri Earth (Pty) Ltd	JHB	Sales	Johann	0861 888 008	083 327 3237	LNE@LNE-AgriEarth.com
LNE Agri Earth (Pty) Ltd	JHB	Sales	Juan	0861 888 008	083 327 3237	LNE@LNE-AgriEarth.com
LNE Agri Earth (Pty) Ltd	JHB	Sales	Guillaume	0861 888 008	083 327 3237	LNE@LNE-AgriEarth.com
LPM Procurement	Germiston	Office	Linda Patricio	011 776 9160	083 637 7122	info@lpmprocurement.co.za
Machinery Contractors	Brits		Wayne	012 250 3534		wayne@machinerycontractors.co.za
Mae Equipment	Witbank	Sales	Thomas Mittag		072 545 6223	info@mae-equipment.com
Mafika Engineering	JHB			011 334 1120		info@mafika.co.za
Marange Plant & Mining	Bloemfontein		Maryke	053 841 0415	082 296 9810	maryke@marange.co.za
Marsay Equipment	Johannesburg		Tim Marsay	011 781 7410	083 654 4248	tim@marsayequip.co.za
Masslift Africa Mitsubishi Forklifts Dbn		Product Support/Spares	Brandon	031 700 8480	078 697 6161	Brandon@mlift.co.za
McKenzie Plant	Sales	Richmond/KZN	Stuart McKenzie	033 212 2181	082 558 7901	sjm@mckenzieplant.co.za
MHS Plant	JHB	Sales	Conrad	010 500 6193	082 781 9481	conrad@mhsplant.com
Midplant Services	JHB	Sales	Kellas	011 967 0055/60	083 675 1385	sales@midplant.com
Midplant Services	JHB	Sales	Jell	011 967 0055/60	083 657 6123	sales@midplant.com
Midplant Services	JHB	Sales	Lee	011 967 0055/60	083 459 1695	sales@midplant.com
Milltech Engineering			Neil	011 421 7821	083 460 6510	neil@milltech-eng.com
Multi One Evolution	Benoni		Lofty Van Wyk		082 888 8899	info@multi-one.co.za
Mzantsi Transmissions	Johannesburg	Sales	Darryl Cilliers	011 868 5130	071 684 5784	info@gearboxes.me
N12 Truck Yard	Delmas – Mpumalanga				013 661 1039	sales@n12truckyard.co.za
Nduna Spares	Steelpoort		Natasha Reynders	013 230 3852		ndunaspare@gmail.com
New Beginnings Designs	JHB		Suken	011 791 4120	082 923 7987	suken@nbdesigns.co.za
NUCO Auctioneers	Dooringkloof East Pretoria		Jaco De Jager		011 206 8963	jaco@nucoauctioneers.com
One Stop Procurement	Benoni		Roger Melenas	011 420 1003	079 493 4486	roger@onesp.co.za
P&R Earthmoving	JHB	Sales	Scott	010 823 6385		scott@prearthmoving.com
P&R Earthmoving	JHB	Sales	Grant	010 823 8821		grant@prearthmoving.com
P&R Earthmoving	JHB	Sales	Ladis	010 823 7322		ladislas.l@pandearthmoving.com
P&R Earthmoving	JHB	Sales	Greg	010 823 6276		greg@prearthmoving.com
P&R Earthmoving	JHB	Sales	Kyle	010 823 6385		kyle@prearthmoving.com
P&R Earthmoving	JHB	Sales	Conrad	010 823 7972		conrad@pandearthmoving.com
P&R Earthmoving	JHB	Sales	Rikus			rikus@prearthmoving.com
Pacific Construction Equipment		Fairleads Benoni	Mark	011 453 1567	082 441 4587	markivan@mweb.co.za
Paramount Tracks	JHB	Sales		010 007 3258	082 894 5547	sales@paramounttracks.com
Paul Heslop Plant Services			Paul Heslop	086 111 5422	074 101 8239	paul@pixie.co.za
PEX Hydraulics	Cape Town	Sales	Nick Kotzee	021 556 3232		nick@pex.co.za
PEX Hydraulics	Johannesburg	Sales	Mark Dickason	011 882 8413		mark@pex.co.za
Pex Hydraulic Repairs	KZN	Sales	Priscilla Shanker	031 705 5050	084 429 8654	priscilla@pexkzn.co.za
Pilot Crushtec	JHB			011 842 5600		sales@pilotcrushtec.co.za
Plant Finder	PE		Shawn Michell	041 379 1717	082 568 4033	shawn@plantfinder.co.za
Powertrans Rebuild Centre	Isithebe		Ricky Naidoo	032 459 5700	082 555 4925	info@powertrans.co.za
Power Transmissions Technology	Benoni		William	011 022 8570		info@pttech.co.za
Primeplant	JHB		Francois	011 979 4853	066 489 4891	spares@primeplant.co.za
Queensburgh Plant Sales	JHB	Used Sales	Wikus	011 964 1631	083 235 5665	qpsales@mweb.co.za
Queensburgh Plant Sales	JHB	New Sales	Albert	011 964 1467	082 652 4907	qpsales@mweb.co.za
R21 Trucks	Centurion	Sales Manager	Mark Noble	011 206 8958	082 226 2220	mark@r21trucks.co.za
Ramm Parts	Witbank		Adriaan	076 127 2977		adriaan@rammparts.co.za
Ramm Parts	Witbank		Mark	072 530 7373		marc@rammparts.co.za
Ramm Parts	Witbank		Rodney	073 103 9582		
Randle Parts	KZN	Sales	Stan		083 653 4270	
Randle Parts	KZN	Sales	Justin		083 639 1982	justin.cope@randleparts.co.za
Randle Parts	KZN	Sales	Geoff		074 843 5298	
Rankin Training	DBN		Marcel	031 702 8447	082 909 9070	marcel@rankintraining.co.za
Reef Fuel Injection Services	JHB	Manager	Warren Hauser	011 873 2354		warren@reeffuel.co.za
Rent a Dozer	Marble Hall	Owner	Theodor Kleynhans	013 261 1746	083 459 5593	admin@rentadozer.co.za
Replacement Spares Unltd. / RSU	Pretoria	Sales	Paul Pelser	012 803 8714		paul@rsu.co.za
Revaro	Gauteng	Sales	Tiaan	+27 11 794 8271	081 008 7331	sales@revaro.co.za
Revaro	Gauteng	Sales	Hans	+27 11 794 8271	062 716 4330	sales@revaro.co.za
Revaro	Gauteng	Sales	Tammy	+27 11 794 8271	083 235 9497	sales@revaro.co.za
Revaro	Gauteng	Sales	Mark	+27 11 794 8271	076 147 3572	sales@revaro.co.za



# Quick Reference

COMPANY	BRANCH	DESIGNATION	CONTACT	TEL NO	CELL	EMAIL
Rham Equipment	Olifontfontein		Michael Combrink	011 203 7900		info@rham.co.za
Rhino Excavator Hammers	JHB		Paul	086 111 5422	074 101 8239	sales@rhinohammers.co.za
Rhino Excavator Hammers	JHB		Clive	(011)397 3327	071 670 8707	sales@rhinohammers.co.za
Rocktech Earthmoving Wearparts	JHB	Manager	Derek Swift	011 793 6838	082 561 4682	derek@rocktech.co.za
Roger's Undercarriage	JHB			011 964 2695	083 974 5851	rogers.uc@mweb.co.za
Ruspet Exhausts	JHB		Russell	011 827 2824	083 448 7669	russell@ruspet.co.za
Safety Grip	JHB	OTR S/Manager	Tewus Wesse	011 708 6660	083 639 2290	tewus@safetygrip.co.za
Scotty's Plant Hire	Pinetown		Ashley Scott	031 700 8000		scottys.plant@mweb.co.za
Scotty's Plant Hire	Pietermaritzburg		Ashley Scott	033 386 1653/14		scottyspmbsales@mweb.co.za
Sclanders Mech Natal		Sales	Ivan Kaisten	031 700 8083	083 653 3724	ivan@schlandermech.co.za
SEM	JHB	Parts	Barry Fang		072 399 9817	bm@semrsa.co.za
SEM	JHB	Parts	Saaj		061 564 1167	parts1@semrsa.co.za
Sew's Plant & Civils	KZN		Sunash	031 507 2491	082 284 5082	info@sews.co.za
Shin Li Trading	Johannesburg			011 396 1081/87	079 872 0465	sales@shinlitrading.co.za
Shonakhona Logistics				032 943 3428	073 188 2004	
Sino Plant	Gauteng	Sales Manager	Mark Noble	011 206 8958	082 226 2220	mark@sinoplant.co.za
Spec-Cast Wear Parts	JHB	Sales Manager	Joe Venter	011 396 1713	074 134 5507	undercarriage@spec-cast.co.za
Spec-Cast Wear Parts	Middelburg	Sales	Herman Bezuidenhout	013 813 1413	072 187 6943	herman@spec-cast.co.za
Spec-Cast Wear Parts	Kathu, N/Cape	Sales	Ilse van Rooi	053 010 1304	067 414 8832	northerncape@spec-cast.co.za
Sintech	JHB	Sales	Jacob Nkabinde	011 823 2359		sales@sintech.co.za
SparePower	JHB	Parts Sales		011 845 4184	082 457 2804	terry@sparepower.co.za
STM Mining	JHB	Sales	Barney v Rooyen	011 894 6192	072 086 6163	barney@stmmining.co.za
Tambani Hydraulics	JHB		Lee Bray	071 687 9274		lee@tamhy.co.za
The CAT Rental Store / Barloworld		Durban		(031)569 8500	082 909 9188	mnicolia@barloworld-equipment.com
The Seat Connection	JHB	Sales	Lydia/Graham	011 452 6802/6814		info@seatconnection.co.za
TJB Earthmoving Parts Buying	JHB		Brad	+27 71 154 3786		brad@tjbearthmoving.co.za
Tommy's Auto Parts	Newcastle		Ahmed	034 375 8111	072 889 2581	exportintl@aol.com
Tractor and Grader Supplies	JHB	Sales	Jeannine	011 392 7533		jeannine@tags.co.za
Tractor and Grader Supplies	Witbank	Sales	Markus	082 921 8634		markusv@tags.co.za
Tractor and Grader Supplies	Witbank	Sales		013 492 2399		markusv@tags.co.za
Tractor and Grader Supplies	Durban	Sales	Theo	082 553 7663		theo@tags.co.za
Tractor and Grader Supplies	Cape Town	Sales	Neal Simpson	082 606 7366		neal@tags.co.za
Tractor and Grader Supplies	Swaziland	Sales	Tiago	+268 2 518 4548		tiago@tags.co.za
Tractor and Grader Supplies	Namibia	Sales	Handre	+264 61 264710/1/2		handre@powerpartsnamibia.co.za
Transand			Fran cois Gerber	044 695 0105	082 454 0934	charlesjnr@transand.net
Trax Global	JHB		Steve	082 954 6253		steve@traxglobal.co.za
Trax Global	CPT		Eddie	082 697 0534		parts@traxglobal.co.za
Trax Global	CPT		Bev	083 505 8955		bev@traxglobal.co.za
Trysome cc	JHB	Supplies	Jaco	(011)823 5650		jaco.vandermerwe@trysome.cc
TTC Engineering & Hydraulics		JHB	Owner Tino	011 845 2837	082 822 4676	tino@ttcenghyd.co.za
TTC Engineering & Hydraulics		JHB	Admin Chanel	011 845 2837		admin@ttcenghyd.co.za
Turboworks	Centurian	Sales		012 653 7507	082 824 8037	sales@turboworks.co.za
Turbo Direct	Isando	Sales		011 392 5195		
Unity	JHB	Sales		011 845 1630	082 457 0221	unitysalesandservices@gmail.com
VR Diesel & Turbo			Wayne	013 246 1003	083 310 9235	wayne@vrdiesel.net
Vendal Civils	JHB		Anton	011 801 4911/2	082 923 5397	vendels@mweb.co.za
Vendel Equipment Sales	JHB	Sales	Jaap	011 801 4911/2	082 892 1327	associated1@xnet.co.za
Vita Plant & Equipment	Brits	Machine Sales & Repairs	Costa Voyiatzakis	012 252 2915	082 521 7095	nicholas@vitaplant.co.za
Vortex transmissions	JHB		Johan	011 452 4430	082 333 1005	vortex@mweb.co.za
Vortex transmissions	JHB		Jan	011 452 4430	082 333 1004	vortex@mweb.co.za
WH Auctioneers	Midrand	Sales	Shannon	011 574 5700	084 520 5000	info@whauctions.com
WH Auctioneers	Midrand	Sales	Mathew	011 574 5700	084 252 5000	info@whauctions.com
WH Auctioneers	Midrand	Sales	Tim	011 574 5700	082 371 1069	info@whauctions.com
WAHA Equipment	Midrand	Sales	Will	011 574 5728	076 037 9516	will@waha.co.za
Wearpact	JHB	Sales	Linda	011 845 3234	083 453 3960	mwwrp@mweb.co.za
Weichai	JHB	Parts	Barry Fang		072 399 9817	bm@semrsa.co.za
WesTrac	AUS		Ron Lanson	+61 418 927 625		Ronald.Lanson@westrac.com.au
Wilson Plant	CPT	Sales	Miles Wilson	021 534 9536	082 928 9215	admin@wilsonplant.co.za
Yellow Metal SA	Pretoria	Sales	Pieter Botha	011 970 1299	082 805 8220	sales@ymsa.co.za
ZF Services South Africa	JHB	Sales: Service Parts	Warren Viviers	(011)457 0031	082 776 2759	warren.viviers@zf.com
ZF Services South Africa	JHB	Workshop:Off-road division	Christo Uys	(011)457 0091		christ.uys@zf.com

**Want Your company listed in our Quick Reference Guide? Please email your company details to [janine@earthbroker.co.za](mailto:janine@earthbroker.co.za)**







**WEICHAI**  
PRODUCT SUPPORT AT ITS BEST

**Official Distributor for WEICHAI Parts**  
New Machine Sales | Rental | Parts and Product Support

**PRODUCT SUPPORT  
AT ITS BEST**



**OUR BRANDS & OUR PARTNERS**



**FAW Q8**



**Oils**

**AEOLUS**



A Caterpillar Brand



**ESA**

EQUIPMENT SOLUTIONS AFRICA



**POWERSTAR**

trucks built to last



**KRAGHOND**



HUNTER

**14 Buwbes Rd, Sebenza**

Barry - 072 399 9817

**[bm@semrsa.co.za](mailto:bm@semrsa.co.za)**



# Bell ReMan Parts & Components

for **JCB**  
Backhoe Loaders



Get a range of re-manufactured components with the same performance and warranty 'as new' for peace of mind at a fraction of the cost.

**BELL**  
South Africa

Proudly selling  
& supporting

**JCB**

Email: [reman@bellequipment.com](mailto:reman@bellequipment.com) • [www.bellequipment.com](http://www.bellequipment.com) • FOLLOW US ON    