

your sourcing solution for new & used equipment & machinery

earthbroker

email: janine@earthbroker.co.za web: www.earthbroker.co.za volume 17 | issue 11 November 2021



**ON THE RIGHT
TRACK WITH**

CEN TRAX
Since 1974
www.centraxsa.com

Head Office: Tel: (011) 392 5055 / (011) 392 5056 / Fax: (011) 392 3091
Durban Branch: Tel: 086 123 6872 / Fax: 086 529 4683 / **Steve:** 083 613 0664

**EXPERIENCE THE WORLD CLASS
CENTRAX UNDERCARRIAGE
CONVERSION & REPAIR PROCESS**

**OUR TEAM OF
TRAINED EXPERTS
WILL KEEP YOUR
EQUIPMENT ON TRACK**



EXPERTS IN UNDERCARRIAGE & WEAR PARTS



YOUR ONE STOP UNDERCARRIAGE & WEAR PARTS SHOP

Manufacturers names, numbers and descriptions are used for reference purposes only & is not implied that any parts listed is the product of these manufacturers.



Scott : +27 10 500 2167

scott@prearthmoving.com

www.prearthmoving.com

YOUR EARTHMOVING COMPONENT SPECIALIST

No. 170 - 3rd Avenue, Bredell
Kempston Park, 1619.
South Africa

ATTACHMENTS • AXLES • BREAK GROUPS • CYLINDERS • ENGINES • FINAL DRIVES • G.E.T. • HYDRAULIC PUMPS • NEW PARTS • POWER TRAINS • TRANSMISSIONS • UNDERCARRIAGE



CAT R1600G
Transmission



KOMATSU PC3000
Pump and Drive



CAT 789D
Transmission



CATERPILLAR D9T
Crawler Dozer
Stripping for Spares



KOMATSU PC3000-6
Dismantling for Spares
All components available



KOMATSU HD785-7
Stripping



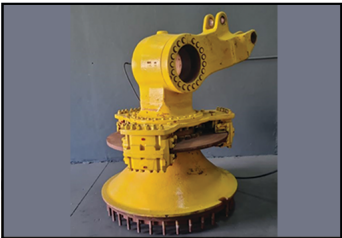
KOMATSU WA800-3
Wheel Loader
Stripping for spares



KOMATSU HD785-5
Stripping for Spares



CAT 777F
Good used Wheel Station



KOMATSU 730E
Good used Front corners



CATERPILLAR C9
Industrial Engine



CATERPILLAR C27
Engine for CAT D10T
- Rebuilt -



CATERPILLAR
R1600 Axle



KOMATSU PC8000
CAB



KOMATSU PC8000
Cooling Pack



KOMATSU PC8000
Rollers



Kyle Silvestre
+27 10 823 6385
sales@prearthmoving.com



Ladislas Mutondo
+27 10 823 7322
ladislas.l@prearthmoving.com



Greg Gavazzi
+27 10 823 6276
greg@prearthmoving.com



Conrad Snyman
+27 10 823 7972
conrad@prearthmoving.com



Rikus Esterhuizen
+27 10 823 6857
rikus@prearthmoving.com

Contact Details

Sales Manager & Editor
Janine Sargeant
083 456 4027

Design / Layout
Dylan McDonald
082 485 3001

Sales Contact
083 456 4027

Electronic Origination & Printing
ROC Media

The Editors welcome articles and photographs, which will be considered for publication on their merit.

Disclaimer: The Editors and Publisher do not necessarily endorse any views or statements made by contributors.

Janine Sargeant
083 456 4027
(FAX) 086 685 1258
janine@earthbroker.co.za

Physical Address:
Unit 9A, Bishop's Court,
8 Delamore Rd,
Hillcrest, Durban, 3610

Postal Address:
P.O. Box 2484,
Hillcrest,
3650

Banking Details:
Earthbroker
First National Bank
Hillcrest
Code: 223726
Account No.: 62295649308



Audit Bureau of Circulations
of South Africa

We are ABC accredited

Pamms Certificate no:
2A8DD9F60574FFC2A4EEEE01A



Manufacturer's names, numbers & descriptions are used for reference purposes only & it is not implied that any part listed is the product of the manufacturers.



82

BABCOCK

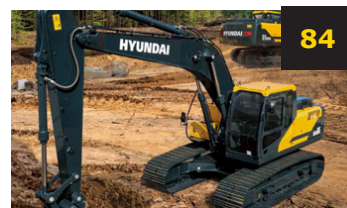
National parts distribution centre
streamlines supply chain



83

Doosan

Doosan DX520LCA-K
crawler excavators



84

HPE Africa

HPE Africa's Hyundai HX series crawler
excavators - HX220S and
HX300SL machines



22

LiuGong

Which LiuGong fits better for your
mining operations?



6

Manitou Southern Africa

Manitou skid steers
All-terrain maneuverability



85

MHS Plant & Equipment

Turnkey solutions for the valuation and
disposal of repossessed mining,
construction equipment

Contents

Advertisers Index	92-93	Manitou Southern Africa	7
All Africa Supplies	62-63	Marsay Equipment	66
AmPlant	18	McKenzie Plant Sales	28
Associated Equipment	48-49	Mid Plant Services	10-11
Atlas Masjiene	15	Mzantsi Transmissions	28
Bell Equipment	13,100	New Beginning Designs	59
BLC Plant	50	One Stop Procurement	45
BLC Trucks	51	P & R Earthmoving	2
BLC Parts & Components	52	Paramount Tracks & Equipment	41
Blumaq South Africa	26-27	Phemba Equipment	40
Bulk Machine Hire	72	Plant Finder	70-71
C&J Earthmoving Repairs	9	Power Transmission Technology	34
Cat ER	40	Prime Plant	19
Centrax	1,20-21	RC Investments	18
Changlin	18	Rhino Excavator Hammers	67
CTC Plant Company (PTY) Ltd	12	Rocktech	73
Dozer Parts	46-47	Ruspet Exhausts	8
Dura Equipment Sales	37	Safety Grip	74
Dura Parts	39	Shin Li Trading	24-25
Earthmoving Machine Sales	80-81	Sintech	38
Earth Mach	64	Spec-Cast Engineering	14
East Coast Gears	18	Spec-Cast Wear Parts	42-44
ESP	54-57	STM Mining	30-31,58
Filter Centre	14	Tractor Grader Supplies	16-17
Gears for Africa	4	Transand	68
Industrial Plant Solutions	79	The Seat Connection	8
ITR Africa	60-61	Turboworks	53
Inmine - Inala Mining Services	32-33	Turbo Direct	29
Kemach McCloskey	5	Vortex Transmissions	36
Liugong-Burgers	23	Weichai & SEM Parts	99
LNE Agri Earth (Pty) Ltd	69	Wearpact	65
MAE Equipment	35	Machine Classifieds	88-91
		Quick Reference	95-98



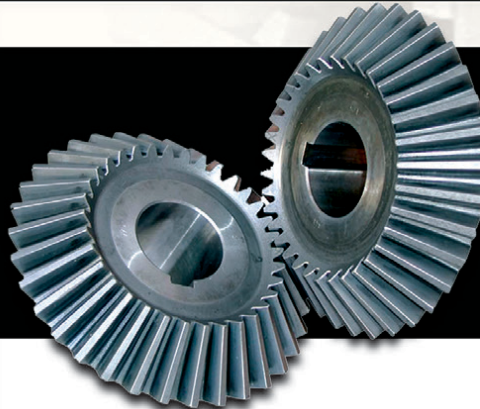
GFA

Gears for Africa

ADDRESS:
145 Lamp Road, Wadeville
Germiston

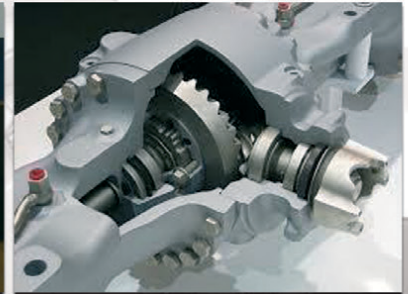
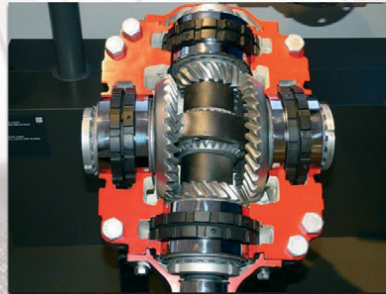
OUR QUALITY COMPARES 100 % TO ANY OEM SPARE MANUFACTURES

MANUFACTURE OF SPIRAL BEVEL GEARS NOW AVAILABLE



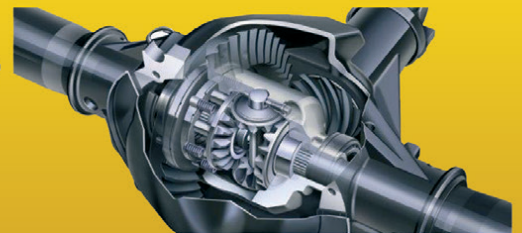
Gears for Africa products include all types of gears, sprockets, splines and related product for industrial and heavy duty equipment and practically all applications related to power drive systems:

- Bevel Gears
- Spur Gears
- Worm Gears
- Helical & Internal Helical Gears
- Crown Gears
- Internal & External Splines.



**CROWN WHEEL AND PINION, PLANETARY, SUN AND RING GEARS
FINAL DRIVE GEARS, DIFF HOUSINGS SPIDER CROSS KITS, SPIRAL BEVEL GEARS**

**FOR THE MINING, RAIL, HEAVY EARTH MOVING, BUILDING,
AND AGRICULTURAL INDUSTRIES**



**083 657 0522 | carl@gearsforafrica.co.za
www.gearsforafrica.co.za**

**Tel: 011 824 2017
Fax: 011 420 3314**



FIELD TESTED
WORLDWIDE

Kemach Equipment offers a range of McCloskey Crushers, Screens, Stackers and Washing Plants to suit your requirements.

- Robust and reliable mobile crushers for the materials processing industry. The high performance range of jaw, impact, and cone crushers combine productivity with outstanding durability to achieve the most efficient levels of product reduction across all crushing applications.
- Mobile Screeners are high capacity, heavy duty, versatile machines built based on the industry leading “High Energy” screenbox. With the largest screening areas in their class, the S-Series and R-Series screeners are designed to give customers high output and durability in the most demanding conditions, and deliver high production across industries.
- Stacking Conveyors and Feeders provide material stockpiling solutions that maximize the efficiency of mobile screening and crushing plants. Tracked or wheeled, McCloskey conveyors deliver high stockpile capacity and less downtime across every application.



Contact your nearest branch today [f](#) [t](#) [i](#) [in](#) [v](#)

www.kemach.co.za

KEMACH
EQUIPMENT

JOHANNESBURG +27 (0) 11 826 6710	RICHARDS BAY +27 (0) 87 357 8985
MIDDELBURG +27 (0) 13 244 1839	CAPE TOWN +27 (0) 21 949 7442
PRETORIA +27 (0) 12 548 2956	GEORGE +27 (0) 44 878 0366
BLOEMFONTEIN +27 (0) 51 432 3978	PORT ELIZABETH +27 (0) 41 453 1819
KWA ZULU-NATAL +27 (0) 31 700 8278	EAST LONDON +27 (0) 43 732 190

MANITOU SKID STEERS ALL-TERRAIN MANEUVERABILITY

MANITOU 4700V
COMPACT LOADER



Skid steers are one of the most sought-after machines due to its versatility, safety, and maneuverability on worksites. Skid steers are used in construction, mining and farming to easily handle material with productivity and efficiency. Combined with the correct attachment, a skid steer can practically perform any activity required of it.

Manitou offers skid steer units ranging from 600 - 1900kg in capacities, in radial and vertical. These units consist of 1340R, 1500R, 1650R, 1900R, 2600R, 3300V and 4200V. The machines also come in radial-lift and vertical-lift models. Manitou radial lift skid steers provide excellent forward reach at the middle of the lift path. This provides high performance for loading and offloading capacities. The radial-lift machines enhance performance in excavating, grading and digging below grade applications. Vertical lift skid steers provide more reach at full lift height, optimal for applications that require loading and stacking at high heights. By keeping the load closer to the machine, lift capacities are increased over the radial-lift models.

Manitou's skid steer range offers an extensive range of attachments, which are quick to master and the quick-hitch attachment system ensures that changing attachments to suit the application is effortless. This means that one Manitou machine can fulfil an array of functions, thus eliminating the need for multiple capital outlays for a fleet of task-specific machinery.

These very robust loaders make all-terrain maneuverability look easy on uneven, muddy, or rough environments. With a heavy lift capacity, the machines are capable of transporting, lifting and moving your materials of all kinds, including the most cumbersome and bulky. Due to their multifunction capability, these compact loaders are a versatile reference solution for builders and farmers who must perform several operations every day.

The level II ROPS/FOPS cab designs are mounted forward on the chassis and the seat is mounted higher for exceptional visibility to the front, rear, sides and cutting edge. This will allow for precise placement of loads and reduced jobsite incidents. The long wheelbase provides a smoother ride and a lower centre of gravity for added stability.

Combining driving comfort, precision of movement, multifunctional use (with several compatible attachments), resistance and ease of maintenance, the skid steer range is guaranteed to meet all your requirements for loading / unloading, palletizing, agriculture, and transportation of heavy loads.

Manitou's value packages expand beyond just equipment. Extendable warranty offers and maintenance contracts are available to suit your needs to ensure that your equipment is always in an optimal state of maintenance and repair costs are kept to a minimum. With Manitou's EASY MANAGER telematics system, you can monitor your machine(s) in real time. By collecting data and converting it into valuable information, you can manage your day to day operations safely and accurately. Whether you're in the construction, mining, agriculture, or warehousing industry, we have a skid steer to suit your material handling needs!

For more information, visit www.manitou.co.za to locate a dealer near you or call on 010 601 3000.

Construction made **SIMPLE**



Low effort. High productivity



MANITOU SOUTHERN AFRICA

Tel: +27 10 601 3000 **Address:** Proton Industrial Park, Proton Street, Chloorkop

Email: info.msa@manitou-group.com | www.manitou.co.za

Represented throughout the African continent through our network of dealers.



Russell at Head Office
Tel: 011- 827 2824/6
Fax: 011- 827 2850
russell@ruspet.co.za
felicity@ruspet.co.za

WE MUFFLE THE INDUSTRY

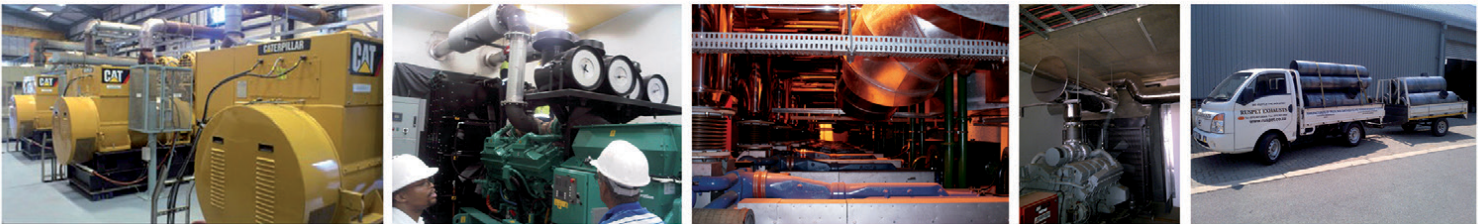
RUSPET EXHAUSTS

MANUFACTURERS OF TRUCK, BUS, EARTHMOVING & GENERATOR EXHAUSTS

Ruspet Durban Branch
Storm Hill
Cell: 081 737 1598
storm@ruspet.co.za



ALL OUR EARTHMOVING SILENCERS ARE MADE TO OEM SPEC.
WE HAVE NUMEROUS SPECIFICATIONS FOR CATERPILLAR, KOMATSU AND BELL ETC.



Seats for safety and strength

The **Seat Connection** has been a regular and frequent supplier of mining seats for some 30 years.

We have a fully equipped workshop and professionally trained team to assemble new seats and repair or restore used seats.

Developed for strength, our **THESCO Mining Seats** with their compact EU approved suspensions are ideal for limited space environments and harsh conditions.



THESCO SEAT II



THESCO SEAT III



THESCO SEAT IV



The seat
CONNECTION



TheSeatConnection



+27 11 452 6802



info@seatconnection.co.za



www.seatconnection.co.za

Specialising in **CAT & Allison** Transmissions



**We repair all Earthmoving Components
& Manual Truck Gearboxes**



EARTH MOVING REPAIRS PTY LTD

C And J Earthmoving Repairs

No. 6 Venda Street
Sebenza, Edenvale
Tel: 011 025 9336
Cell: 079 888 6071
Email: mikecjeearth@gmail.com

**We offer repairs to earthmoving machines and all components
e.g. transmissions, engines, diffs, axles, tandems and more.
We specialize in CAT. Other brands include Perkins, Deutz, Allison and more.
Hydraulic and dyno testing services are also available.**



Servicing all Major Brands



CLARK



HITACHI

MID PLANT SERVICES

**NEW & RECONDITIONED HYDRAULIC EARTHMOVING
EQUIPMENT, PARTS AND REPAIRS**



*THE ALTERNATIVE SUPPLIER FOR DOOSAN, HYUNDAI,
VOLVO AND OTHER BRANDS OF EXCAVATOR
PARTS AND COMPONENTS IN SOUTH AFRICA.*



:+27 (0)11 967 0055

:+27 (0)11 967 0060



: SALES@MIDPLANT.COM



**: 273 3RD AVENUE, BREDELL,
KEMPTON PARK, 1619**



: WWW.MIDPLANT.COM

JUST ARRIVED: **REXROTH** PUMPS AND PARTS



RANGE OF A10VO **REXROTH** PUMPS AND PARTS AVAILABLE.



**CAT 428C/ D
MAIN PUMP**



**VOLVO A30D
STEERING PUMP**



**BELL B18D - B30D
HOIST PUMP**

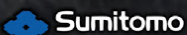
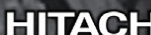
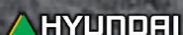


**VOLVO A35/A40D/A40E/ F
STEERING PUMP**



COMING SOON

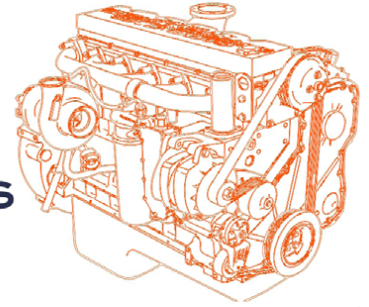
FULL RANGE OF **ZF MTL SERIES** AXLE PARTS



*All manufacturers names, numbers, symbols and pictures are for reference only. It does not imply that any of the parts are the product of these manufacturers.

NEW STOCK UNPACKED

ONLY @ MID PLANT SERVICES



CYLINDER LINER
De08, De12, DB58



BID END BEARINGS
De08, De12, DB58



MAIN BEARINGS
De08, De12, DB58



PISTON RING KITS
De08, De12, DB58



WATER PUMP
De08, De12, DB58



OIL PUMP
De08, De12, DB58



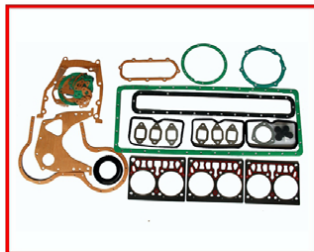
PISTONS
De08, De12, DB58



PISTON PINS
De08, De12, DB58



CRANKSHAFT
De08, De12, DB58



COMPLETE GASKET KIT
De08, De12, DB58



**Zx330
TRAVEL REDUCTION**



**20T COMPLETE
FINAL DRIVE**

THERE IS SO MUCH MORE! PLEASE CONTACT ONE OF OUR SKILLED SALES REPRESENTATIVES FOR MORE INFORMATION.



:+27 (0)11 967 0055
:+27 (0)11 967 0060



: SALES@MIDPLANT.COM



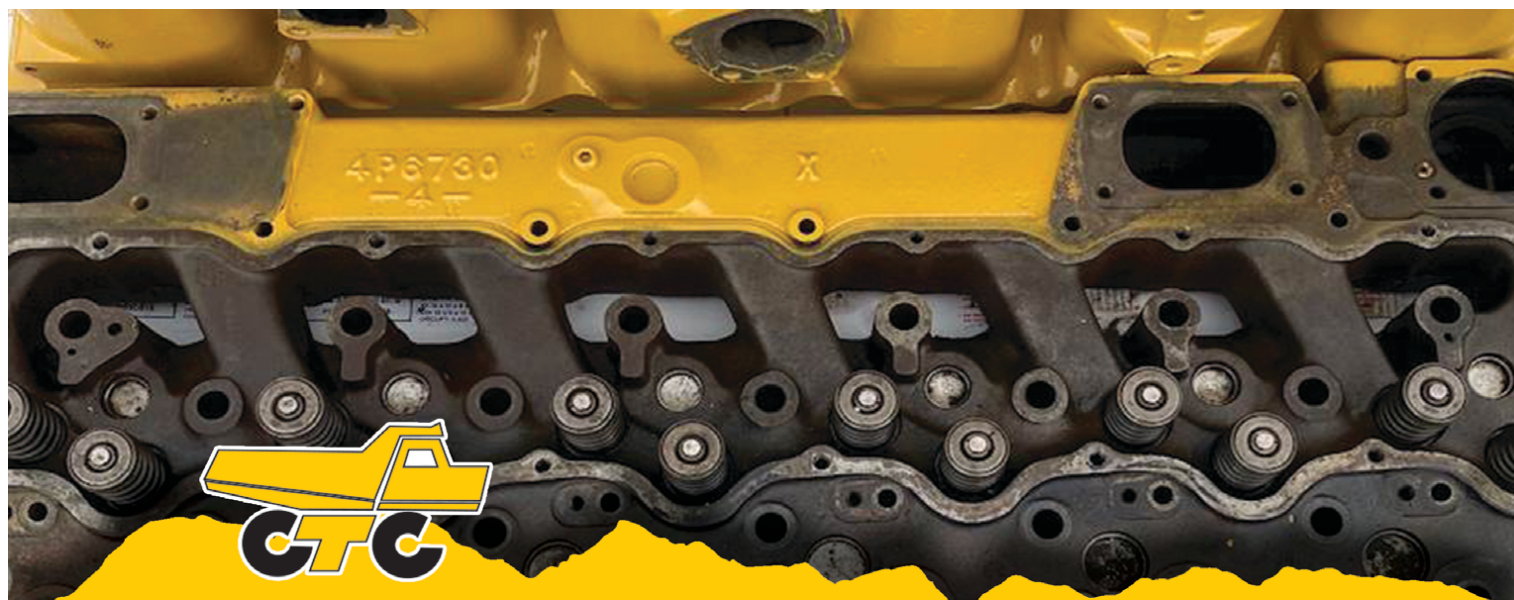
**: 273 3RD AVENUE, BREDELL,
KEMPTON PARK, 1619**



: WWW.MIDPLANT.COM

**THE ALTERNATIVE SUPPLIER FOR DOOSAN
HYUNDAI VOLVO AND OTHER BRANDS OF EXCAVATOR
PARTS AND COMPONENTS IN SOUTH AFRICA**





C.T.C. PLANT COMPANY
SINCE 1992

UNITS STRIPPED FOR PARTS AVAILABLE

DOZERS

- CAT D7H
- CAT D8R
- CAT D9N
- CAT D9R

DUMPERS

- BELL B20B
- BELL B25B
- BELL B25C
- BELL B25D
- BELL B30D
- BELL B30E
- CAT 725
- CAT 740B
- VOLVO A25C
- VOLVO A40E

ROLLERS

- BOMAG BW212D
- DYNAPAC CC142 DOUBLE DRUM

SKIDSTEERS

- CASE 1845C
- CASE 226B
- CAT 216B

GRADER

- BELL 770CH

EXCAVATORS

- BELL HD1430
- CASE CX360
- CAT 325D
- CAT 330D
- CAT 350L
- DOOSAN DX300
- HALLA HE220LC
- JCB JS360
- SUMITOMO SH360
- VOLVO EC210 BLC

WHEEL LOADERS

- BELL 1806D/E
- CAT 924G
- CAT 938H
- KOMATSU WA200-5
- KOMATSU WA320-3
- KOMATSU WA380-5
- KOMATSU WA480-6
- VOLVO L90E

TLB'S

- CASE 580SR
- CAT 422E
- CAT 424D
- CAT 428C
- CAT 428E
- CAT 428F
- JCB 3CX
- KOMATSU WB93R/WB91R
- VOLVO BL71/BL61

FOR SUPERIOR QUALITY PARTS ON ALL MAJOR BRANDS

Cnr. Michigan & Manchester
Streets, Airport Industria,
Cape Town, South Africa

Mark Swanepoel: +27 82 825 6966

Roy Heather: +27 61 421 9184

Ryno Hollenbach: +27 81 749 3627

www.ctcplant.com



Bell ReMan Parts & Components

for **JCB**
Backhoe Loaders



Get a range of re-manufactured components with the same performance and warranty 'as new' for peace of mind at a fraction of the cost.

BELL
South Africa

Proudly selling
& supporting

JCB

Email: reman@bellequipment.com • www.bellequipment.com • FOLLOW US ON    

Ad 16125040921



SPEC-CAST ENGINEERING
Trusted to deliver

Bulk Materials Handling Products

Bucket Elevators



Steel Buckets
Suitable for elevating sharp, bulk density materials



HDPE Buckets
Suitable for handling large volumes of all types of grains, feed and most food products



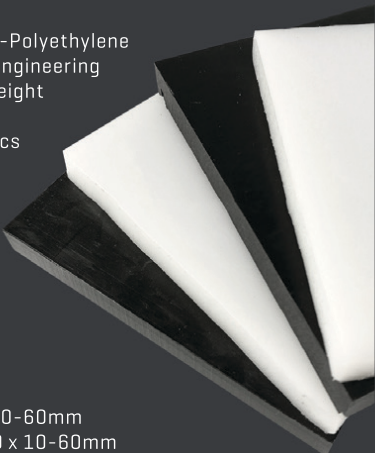
Nylon Buckets
Suitable for high impact & abrasion resistance. Better heat resistance and handling hot, abrasive and sticky materials

HDPE & UHMWPE Sheets

Ultra-High-Molecular-Weight-Polyethylene (UHMWPE) is thermoplastic engineering material, and its molecular weight can reach 4.5 to 9 million. It combines many characteristics such as abrasion-resistance, impact resistance/absorption, chemical corrosion resistance, low temperature resistance and self-lubrication etc.

Available in Black or White

HDPE SHEET: 2000 x 1000 x 10-60mm
UHMWPE SHEET: 3080 x 1220 x 10-60mm



Contact our Bulk Materials Handling Specialist: Brian Jansen
Cell: +27 71 147 6868 | Email: brianj@spec-cast.co.za | Tel: +27 11 396 1713/7 | www.spec-cast.co.za

FILTER CENTRE

Leaders in Heavy-Duty Filtration

Quality Lubricants
NOW IN STOCK



Klenz
Pure Protection

www.filtercentre.com
info@filtercentre.com
031 700 9074





ATLAS

MASJIENE

Corner of Great North & Stanley Road, Brentwood Park AH, Johannesburg
Dewald Hattingh: +27(0) 72 547 2198 | +27(0) 11 973 3737



ATLASMASJIENE.CO.ZA | INFO@ATLASMASJIENE.CO.ZA



Contact Us
T: +27 10 001 9200
T: +27 11 392 7533
F: +27 11 392 7590

**WE OFFER A FULL LINE OF HIGH QUALITY
AFTERMARKET FUEL INJECTION PARTS.**

INFO@TAGS.CO.ZA



**PENCIL NOZZLE
IS ONE OF THE
MAIN
COMPONENTS OF
FUEL INJECTION
SYSTEMS. IT
REGULATES THE
FLOW OF FUEL
TO THE
ULTIMATE
IGNITION
COMPARTMENT.
DEMAND CTP
PENCIL NOZZLES
TO MINIMIZE
OPERATION
COSTS.**

TGS offers a full line of high quality aftermarket fuel injection parts.

TGS™ supplies OPM (Original Parts Manufacturers) Parts for your Earthmoving and Mining Machinery. We not only offer you premium parts but also an exceptional service, outstanding savings and the support you need to get your parts quickly and accurately.

TGS™ since the acquisition by Torre Industrial Holdings, is aggressively expanding into Africa and South Africa. Coupled with our already impressive distribution network in South African and Africa hotspots: Natal, Western Cape, Witbank, Johannesburg, Namibia and also a presence in Swaziland where TGS™ are the Wacker-Neuson dealers, TGS™ hopes to continue to expand our African reach and in so doing, become the most widely based OPM suppliers on the continent.

www.tags.co.za



Maintaining your equipment's fuel system is optimal to running efficiently. Our expertise with the development of diesel fuel injection systems parts, make us highly capable in identifying and eliminating these potential problems.

Fuel Line Assembly

At TGS we have a complete reference of Fuel Assembly Lines for your convenience. We guarantee a top quality product that will carry fuel, oil and lubricants under low as well as high pressure and high temperature.

We offer a complete selection of Fuel line Assemblies for your equipment. Our fuel lines are made from the best materials, with specially designed high pressure steel fittings and adapters for a leak free connection.

All fuel lines are tested to work together as an assembly, ensuring a proper fit. We offer the best value product with OE form fit and function.

Features and Benefits

- Premium quality cold drawn seamless carbon steel tubing.
- Cold drawn process Increases strength allowing for 20% higher working pressures.
- Superior surface finish, connections are treated to prevent oxidation.
- CNC manufacturing process ensures precision and quality.
- Dimensional accuracy and excellent micro-structure uniformity.



Fuel Line Assembly



www.AmPlant.co.za

SPECIALISED PLANT HIRE





Asphalt Equipment / Earthmoving Equipment
Milling Machines / Recyclers etc

Contact - Eddie Simpson
Office : 015 293 1221 ext 224 / Cell : 082 904 7694
Email : simpsons@amplant.co.za

Quality used
plant for sale



**CAT C27 D10T APPLICATION
GOOD USED CORE ENGINE
AVAILABLE FOR REBUILDING**



**C27 CRANKSHAFT
AVAILABLE**



**C27 RECONDITIONED
CYLINDER HEADS
AVAILABLE**



**VARIOUS LONG SUB ASSEMBLY
AVAILABLE**



C27 BLOCK AVAILABLE

RC INVESTMENTS

FOR MORE INFO PLEASE CONTACT US
084 253 9831 | RCinvestments01@gmail.com



SPM Engineering Services cc
east coast gears

**Specialising in earthmoving
power transmission rebuilds of:**

- Front end loaders
- Final drives
- Drop boxes (transfer case)
- Differentials etc.

**MANUFACTURE OF ALL
GEARS AND REPAIRS**





**REPAIR CARRIER
HOUSINGS/ HUBS**

Tel: 031 701 3500 | Cell: 083 383 4943 | Fax/Email: 086 224 3982
Email: eastcoastgears@gmail.com | 24 Henwood Road, Pinetown, KZN

CHANGLIN

We Import & supply parts for CHANGLIN Construction Equipment



WE ALSO IMPORT AND SUPPLY PARTS FOR OTHER CHINESE EQUIPMENT



PARTS Brake pads, Brake boosters, Cylinder seal kits, Transmission control cables, Brake calliper seals, Rear diff oscillation bushes, Fuel tank filler caps and MUCH MORE

Chris. 081 728 6914 | Cindy 017 843 2072 | Michelle 017 843 2072 | Klaas 083 391 9046



FIELD SERVICES NOW AVAILABLE



Primeplant (Pty) Ltd
Tel: 011 979 4853 Fax: 011 396 1653
www.primeplant.co.za



We specialize in the repair & maintenance of **CAT** TLB's



**ON THE RIGHT
TRACK WITH**

CENTRAX
Since 1974

www.centraxsa.com

8 Grader Road, Spartan Ext3

**“LET’S
DO
THIS”**



**EXPERTS IN UNDERCARRIAGE
& WEAR PARTS**

**“YOU CAN WITH
CENTRAX”**

Head Office

Tel: (011) 392 5055 / (011) 392 5056 / Fax: (011) 392 3091

Durban Branch

Tel: 086 123 6872 / Cell: 083 613 0664 / Email: centraxkzn@telkomsa.net

www.centraxsa.com

Manufacturers names, numbers and descriptions are used for reference purposes only & is not implied that any parts listed is the product of these manufacturers.



**ON THE RIGHT
TRACK WITH**

CEN TRAX
Since 1974

www.centraxsa.com

Head Office: Tel: (011) 392 5055 / (011) 392 5056 / Fax: (011) 392 3091
Durban Branch: Tel: 086 123 6872 / Fax: 086 529 4683 / **Steve:** 083 613 0664

EXPERTS IN UNDERCARRIAGE & WEAR PARTS



**EXPERIENCE THE WORLD CLASS
CENTRAX UNDERCARRIAGE
CONVERSION & REPAIR PROCESS**

**YOUR ONE STOP
UNDERCARRIAGE &
WEAR PARTS SHOP**

- **IDLER REBUILD FACILITY**
- **TRACK WORKSHOP**
- **UNDERCARRIAGE**
- **GROUND ENGAGING TOOLS**



Manufacturers names, numbers and descriptions are used for reference purposes only & is not implied that any parts listed is the product of these manufacturers.



WHICH LIUGONG FITS BETTER FOR YOUR MINING OPERATIONS?

Each mining operation has its objectives and complexity, based on which the best earthmoving system and necessary equipment is chosen. When mines with costly operations becomes less profitable, companies are looking for ways to keep the business running by figuring out how to dig up more minerals less expensively from deeper underground than ever before.

LiuGong's high-performance machines provide lower manufacturing costs, lower fuel and operating costs and lower parts and service costs through its dealers, LiuGong says it is committed to providing the lowest possible total cost of ownership for its customers. LiuGong has a wide range of Mining Products that includes Bulldozers, Excavators from 22 to 90 tons and Wheel Loaders of 17 to 50 tons of operating weight together with new DW90A wide-body trucks to fit in to mine in a super-mechanized manner to boost output and productivity, as well as cut costs. However South African open cast mines need many other equipment other than these primary job as load, carry and stockpile. Still in many mines Graders, Rollers and other compact equipment such as Skid Steer Loaders, TLBs or even mini excavators and lifting machines may be needed as secondary to keep the productivity high. This challenge escalates the expectations in Mining with wide range of product line under one roof where LiuGong provide all the equipment needed with various sizes and a strong backup with Burgers Equipment and LiuGong's Global Parts Centre of Sub Sharan Africa in Johannesburg.

Burgers Equipment believes that LiuGong's aftermarket costs for customers are lower than their competitors. Since 2011 many of LiuGong machines in many different mines completed their life span working around and over 20 000 hours. Still, many of units reach 10,000 hours and beyond in couple of years working 24/7 in all parts of the country. This outcome can only be reached with a strong back up with service and parts backup.





TOGETHER WE DEFINE TOMORROW



We seek long term partnerships that achieve mutual development & success. By providing total solutions around the world, we empower customers to control costs and maximize profitability.

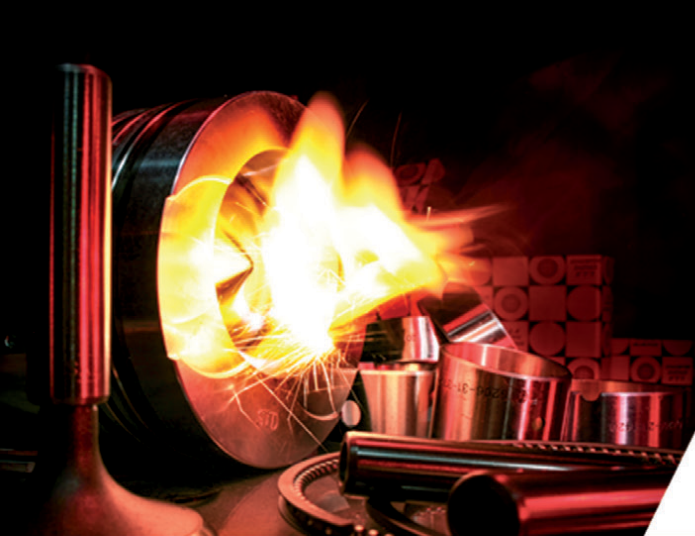


Johannesburg Head Office

Tel: +27 11 979 3636

Email: salesadmin@liugong.co.za

www.liugong.co.za



SHIN LI
TRADING ©



*We Specialise in
Japanese & Korean
Earthmoving Spares*

ENGINE SPARES

Liner Kits, Gasket Kits, Valves & Guides,
Water Pumps, Oil Pumps, Crank & Cam Shafts,
Engine Bearings & Bushings



Mitsubishi
Komatsu
Doosan
Nissan
Isuzu
Hino

HYDRAULIC PARTS

Kawasaki Pumps

New and Complete



Final Drives

20 Ton Excavator
Final Drive Parts
& Complete Units



Komatsu Gear Pumps

Transmission Pumps
Steering Pumps
Main Pumps



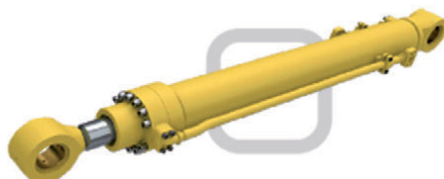
Kawasaki Rotating Groups

K3V and K5V Series
Inner Parts
Rotating Groups
Seal Kits



Komatsu Cylinders

Complete Cylinders
Seal Kits



WWW.SHINLITRADING.CO.ZA

Email:

sales@shinlitrading.co.za (Chris)
sales2@shinlitrading.co.za (Wimpie)
sales3@shinlitrading.co.za (Martin)
sales4@shinlitrading.co.za
sales5@shinlitrading.co.za (Steven)

Address: 67 High Road

Bredell A/H
Kempston Park

Tell:

011 396 1081
011 552 5900 /1/2

Fax:

086 666 2537



***Working hard,
so you don't have to.***

WWW.SHINLITRADING.CO.ZA

UNDERCARRIAGE

Track Links



Sprockets



Idlers



Track & Carrier



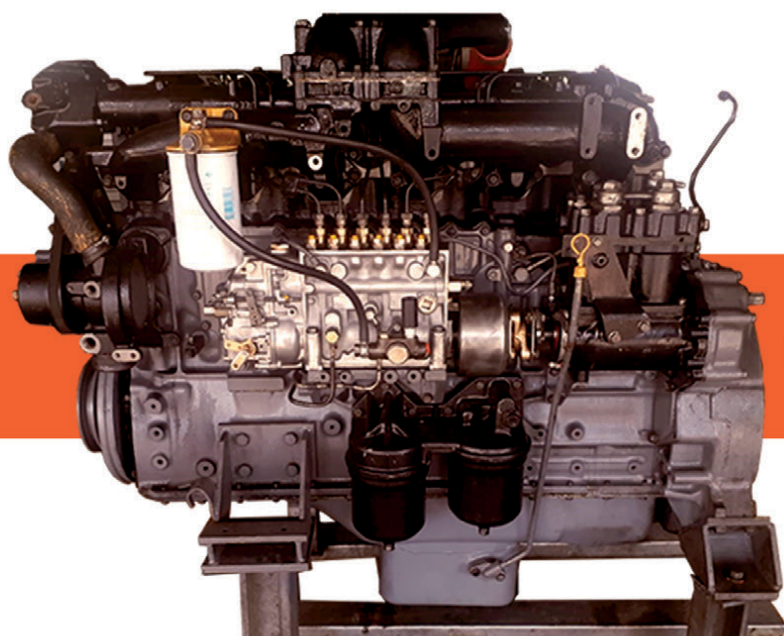
Rollers



Track Plates

Bolts & Nuts

**Genuine Hyundai
20 Ton Track Frames**



6D22T FOR SALE

Address: 67 High Road
Bredell A/H
Kempton Park
Tell: 011 396 1081
011 552 5900 /1/2
Fax: 086 666 2537

**Scan the QR Code
to see our website:**



**SHIN LI
TRADING** ©



www.blumaq.com

Follow us on:



Spare parts suitable for VOLVO

We offer a wide range of items
with immediate delivery for your
VOLVO earthmoving equipment.



Alternative spare parts for Caterpillar

We offer a wide range of items
with immediate delivery
for your **CATERPILLAR**
earthmoving equipment.



Contact:

+27 11 966 5092 **Johannesburg**
+26 096 0923 962 **Kitwe**
+264 81 291 7539 **Windhoek**
john.beukes@blumaq.com

**Berco dealer in
Spain, Zambia,
Turkey and
South Africa:**



Branches in Spain: Alicante | Almería | Asturias | Barcelona | Galicia | Madrid | Mérida | Ponferrada | Sevilla | Tenerife | Zaragoza
Branches in the world: Chile | United States | France | Portugal | Turkey | China | Russia | Italy | Romania | South Africa | Zambia | Peru | Kazakhstan



www.blumaq.com

Follow us on:



Following our success as **Berco** product distributor in Zambia, Blumaq South Africa has now also been appointed a distributor for this quality product in South Africa.

Blumaq South Africa now also offers **Berco quality undercarriage parts and repairs** from our operation based in Wadeville, Johannesburg.

Our fully serviced Track Undercarriage workshops offers a full service including Turning of Pins & Bushes / Re-stripping of Grouser shoes / Track Link repairs / Idler and Roller rebuilds / Track Frame Rebuilds.

Contact us today for a free on site wear assessment of your undercarriage components.

Contact:

+27 11 966 5092 **Johannesburg**

+26 096 0923 962 **Kitwe**

+264 81 291 7539 **Windhoek**

john.beukes@blumaq.com

**Berco dealer in
Spain, Zambia,
Turkey and
South Africa:**



Caterpillar®, komatsu®, cummins®, volvo® and case® are trade brands registered by their owners and are only used for reference purpose of the application of our spare parts.

Branches in Spain: Alicante | Almería | Asturias | Barcelona | Galicia | Madrid | Mérida | Ponferrada | Sevilla | Tenerife | Zaragoza

Branches in the world: Chile | United States | France | Portugal | Turkey | China | Russia | Italy | Romania | South Africa | Zambia
Namibia | Peru | Kazakhstan

McKenzie PLANT SALES

Contact for more details: Tel: 033 212 2181
Cell: 082 558 7901 | Email: sjm@mckenzieplant.co.za



BELL B20D
18000 LITRE WATERTANKER



MERC 2628 - V8
WITH 16000L TANK, PTO PUMP



KOMATSU PC350LC-8



LOWBED
TWO AXLE TRAILER



KOMATSU WA380-6
F.E.L.



MERC 2628 ATEGO
14000 LITRE TANKER



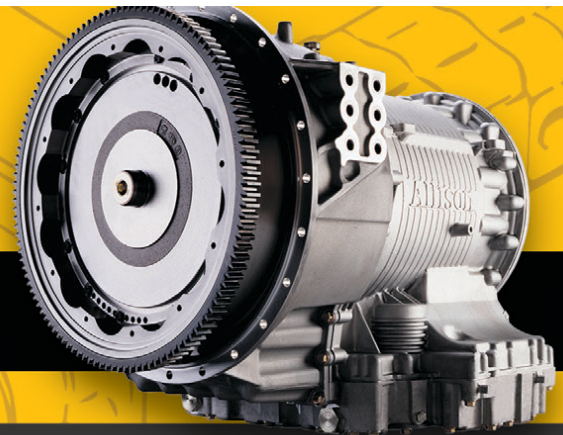
You can now find us on Facebook, go to www.facebook.com/mckenzieplanthire



MZANTSI TRANSMISSIONS

6 Van der Bijl Street, Alrode South, Alberton

**We offer specialised transmission repairs
for heavy duty & on highway machines**



**WE OFFER SPECIALISED TRANSMISSION REPAIRS
FOR HEAVY DUTY & ON HIGHWAY MACHINES**

**BELL • TEREX • CAT • JOHN DEERE
HITACHI • DAEWOO • ZF • ALLISON • CLARK • FUNK**

We offer dyno testing on the following boxes:

**ZF - 4WG92, 4WG94, 4/6WG180/200/210/310
Allison - MD3560, HD4560**

**WE PURCHASE
2ND HAND TRANSMISSIONS**

**Bell B17B, B20B, B25B, 1206 & B40D
Transmissions in stock**

Email: info@gearboxes.me | Tel: 011 868 5130 | Fax: 086 634 7904 | Cell: 071 684 5784

Insist on Genuine Turbochargers!

- Officially appointed Agents, Importers and Distributors for all OEM Brands
- New Turbochargers, Repairs, Spare parts
- Advanced Failure Analysis



- Unmatched pricing
- Unmatched technical support
- Unmatched knowledge
- Unmatched experience



Come direct to the official experts and save time and money!

Direct from the Importers!

**Turbo
Direct**

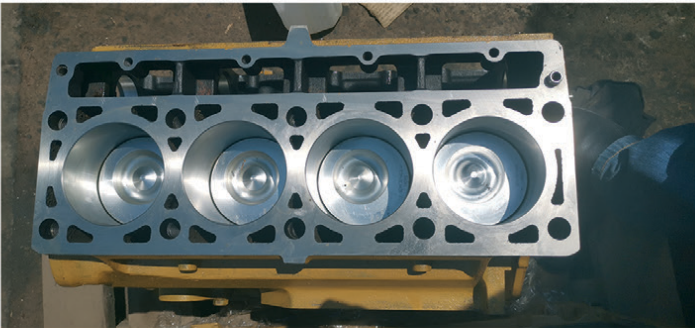
www.turbodirect.co.za | 011 392 5195
Unit A03 corner Airbus & Agusta Road,
Denel Kempton Campus Bonaero Park



GOOD USED EARTHMOVING PARTS AND EQUIPMENT



Tel: (011)894-6192 / (011)894-3377
Fax: (011)894 7914
barney@stmmining.co.za
donovan@stmmining.co.za
Office Hrs: Mon-Fri 07h00-17h00



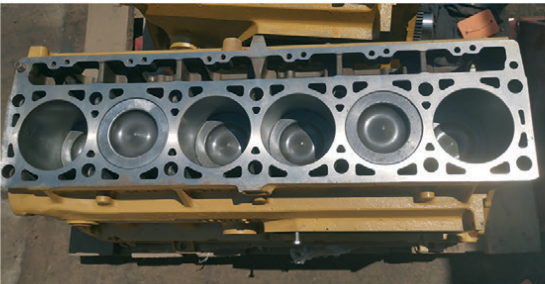
3114DI RECON SUB



Recon C11
HEAD AND CRANK



REMAN SUB / CAT C9



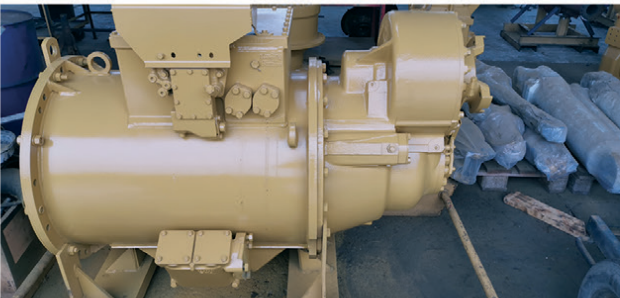
RECON 3126DI SUB



REMAN 3126 HEADS



D10T RECON
SERVICE EXCHANGE FINAL DRIVES



RECON 789C TRANSMISSION



CAT C6.6
ENGINE



RECON D375-5
TILT CYLINDER



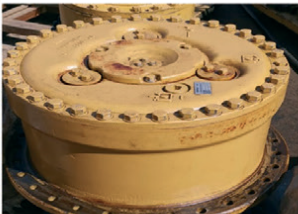
D11R
FINAL DRIVE



CAT 140G
TRANS RECON
S/EXCHANGE



3412DI
REMAN SUB



D8R RECON FINAL DRIVE
SERVICE EXCHANGE

STRIPPED
ENGINES

3304/6
3204
3126
3406
3408
3412
3508
3512
3516

C6.4
C7
C9
C11
C13
C15
C18
C27
C32

MACHINES

EXCAVATORS

225
317B
318B
320B
325B
330B
320D
323D
330D

LOADERS

920
930
936G
938G
950A/H
966G
980F/G
988B

www.stmmining.co.za

PO Box 6456, Dunswart 1508, 40 Michelson RD. Westwood, Boksburg

GOOD USED EARTHMOVING PARTS AND EQUIPMENT

STM

MINING EQUIPMENT PTY(LTD)

Tel: (011)894-6192 / (011)894-3377

Fax: (011)894 7914

barney@stmmining.co.za

donovan@stmmining.co.za

Office Hrs: Mon-Fri 07h00-17h00



GOOD RUNNING ZAXIS 200
UNDER 6 000 HRS



275-5
NO TRANSMISSION STRIPPING



D375-6 MACHINE
STRIPPING



928G
GOOD RUNNING MACHINE



GOOD RUNNING 740
(B1P) SERIAL



D375-5
STRIPPING FOR PARTS



FULLY REBUILT 140G GRADER
WITH WARRANTY



325C
STRIPPING FOR PARTS



938F
GOOD RUNNING MACHINE



950H
STRIPPING FOR PARTS



740 ADT DUMPERS X 2 RUNNING
FOR REBUILD OR STRIPPING



Hennie Nelson
South Africa, Witbank
+27 82 414 1393
sales@inmine.co.za



VARIETY OF
CATERPILLAR & HITACHI ENGINES



CAT 16H GRADER ENGINE
RUNNER



CATERPILLAR 777 / 785
D11 TORQUE CONVERTERS



CAT 785 RECONDITIONED
& USED FINAL DRIVE



RECONDITIONED
CAT 773 DIFF

WWW.INMIME.COM

Plot 26 Naauwpoort, Benicon Park, Witbank 1036
Mpumalanga, South Africa

CAT 773F Stripping for parts



Available parts:

2 x Final drives	All suspension cylinders
1 x Diff	1 x Radiator pack
1 x Transmission	

CAT 773F Bowl



Stripping 2 x Cat 992G



**PLEASE ENQUIRE FOR
INFORMATION ON
AVAILABLE PARTS**

CAT 789C Used Engine



SET / RECONDITIONED CAT 6030 FACE SHOVEL CYLINDERS



**RH120 / RH200
& RH340 Sprockets**



**2 x Boom Lift Cylinders / 2 x Stick Cylinders
2 x Bucket Tilt Cylinders**



**RH120E Reconditioned
Cylinders**



**INMINE have a full operational workshop, that does all work inhouse
from Idler rebuilds to Grouser shoe restripping.**

POWER TRANSMISSION TECHNOLOGY

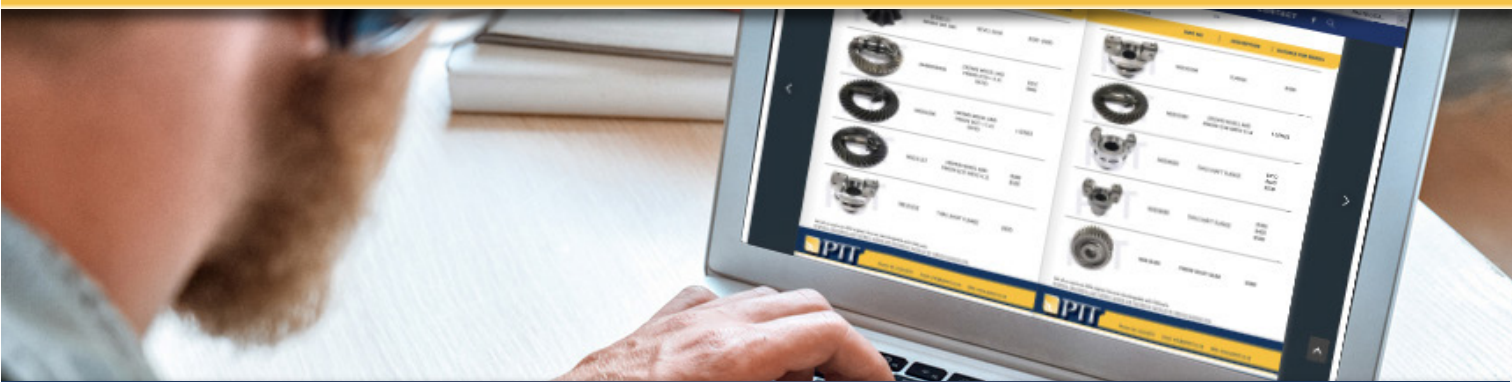
EARTHMOVING DRIVELINE COMPONENT SPECIALISTS

NEW CATALOGUE UPDATE 2021/2022

Driveline Components and parts for Volvo, Bell, Cat and more



View our latest online product catalogue: pttech.co.za/product-catalogue



KEEPING YOUR PLANT IN MOTION

Contact us: Tel: 011 022 8570 | Email: info@pttech.co.za

THOMAS MITTAG
Cell: +27 72 545 6223
Mail: info@mae-equipment.com

MAE Equipment
Witbank/Riverside
(Yard)

www.mae-equipment.com

MAE

EQUIPMENT

CAT 773F WATER BOWSER



2008 model
option to Dump-Truck
Call for Price

CAT D9R DOZER



2013 model
new undercarriage / new serviced
Call for Price

KOMATSU D375A-6



2011 model
refurbished & new undercarriage
Call for Details

KOMATSU D375A-5



2008 model / "as is"
or refurbished 2 units available
Call for Price

ATLAS-COPCO D65 SMARTROC



2017 model
refurbished
Call for Price

ATLAS-COPCO D65-FLEXIROC



2015 model
refurbished
Call for Price

ATLAS-COPCO D65 SMARTROC



2015 model
refurbished
Call for Price

ATLAS-COPCO T50 DRILL-RIG



2016 model
low hours
Call for Price

ATLAS COPCO DM30 DRILL RIG



2012 model
ready for production
Call for Price

ATLAS-COPCO DM30-MK2



2018 model
ready for production
Call for Price

SANDVIK DP1500 PANTERA



2010 & 2012 model
refurbished
4 units available

CAT 773E DUMP-TRUCK



2003 model
low hours
Call for Price

**WE BUY ALL KINDS OF EARTHMOVING,
CONSTRUCTION OR MINING MACHINERY**

**WE PAY CASH
WITHIN 24 HOURS**

PLEASE CONTACT OR SEND OFFERS
TO INFO@MAE-EQUIPMENT.COM

**WE OFFER EASY FINANCE
FOR OUR MACHINES**

PLEASE CONTACT ON ON +27 72 545 6223 OR SEND MAIL
TO INFO@MAE-EQUIPMENT.COM

„Your Partner for new & used Machinery and Equipment.“

www.mae-equipment.com



VORTEX TRANSMISSIONS

Tel: 011 452-4430/1
Parts: 011 452 3296 / 452 3390
Johan: 082 333 1005
Jan: 082 333 1004
Fax: 011 609 5302
Email: vortex3@mweb.co.za



Allison Fuller • Clark • Caterpillar • Funk Twin Disk



SERVICE UNITS:

- AT 545 bell (spec)
- MT 643 bell (spec)
- MD 3560 P TID 2
- MD 3560 P TID 3
- MD 3060 TID 3
- 4500 ORS GEN 4
- 4500 ORS R GEN 4 LIFE FILTER Bell B40D
- 4500 ORS R GEN 4 Bell B50E
- Terex engine PTO 'S TR 60
- Euclid and Terex transmission PTO'S
- Euclid 6610A CEC2
- Terex 6610AR CEC 2
- Euclid 6620A

UNITS THAT WE ALSO DO:

- Bell grader transmissions
- Cat transmissions
- Funk transmissions
- Terex & Euclid Differential center portions
- Bell differential center portion
- Chelsea PTO'S
- Terex engine PTO'S TR100

**Repairs to all
OFF & ON Highway
Transmissions,
Torque Convertors,
Gearboxes, Differentials
& Power Take Off's**

Vortex Transmissions sell genuine Allison parts for all our transmissions
 Dvno testing is done in house and all transmissions that are tested have test reports.



DURA
EQUIPMENT
SALES

AFFORDABLE ✓ **RELIABLE** ✓ **TRUSTED** ✓

WWW.DURASALES.CO.ZA



✓ **NEW LOVOL FR510E2-HD**
LOVOL WARRANTY



✓ **NEW LOVOL FR330D**
LOVOL WARRANTY



✓ **NEW LOVOL FR220D**
LOVOL WARRANTY



✓ **NEW LOVOL FL966H**
LOVOL WARRANTY



✓ **NEW LOVOL FL958H**
LOVOL WARRANTY



✓ **NEW LOVOL FL936H**
LOVOL WARRANTY



✓ **1995 CAT 769C**



✓ **NEW LOVOL FL956H**
LOVOL WARRANTY



✓ **NEW TSHUKUDU 1000L**
DIESEL BOWSER



✓ **2015 BELL B30E**



✓ **2005 KOMATSU D375A-5**



✓ **2010 CAT 140H**

Visit our website on www.durasales.co.za for updated stock. T&C APPLY

JHB SHOWROOM
46 Viewpoint Road
Bartlett, Boksburg

CPT SHOWROOM
30 Kiat Street
Kraaifontein, WC

Contact our showrooms:

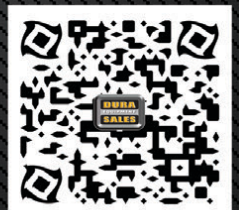
Gauteng: +27 (0) 10 823 5478
Western Cape: +27 (0) 21 212 0210

JHB SALES TEAM:

Curtis
Prinsloo
Coenie
Jerry

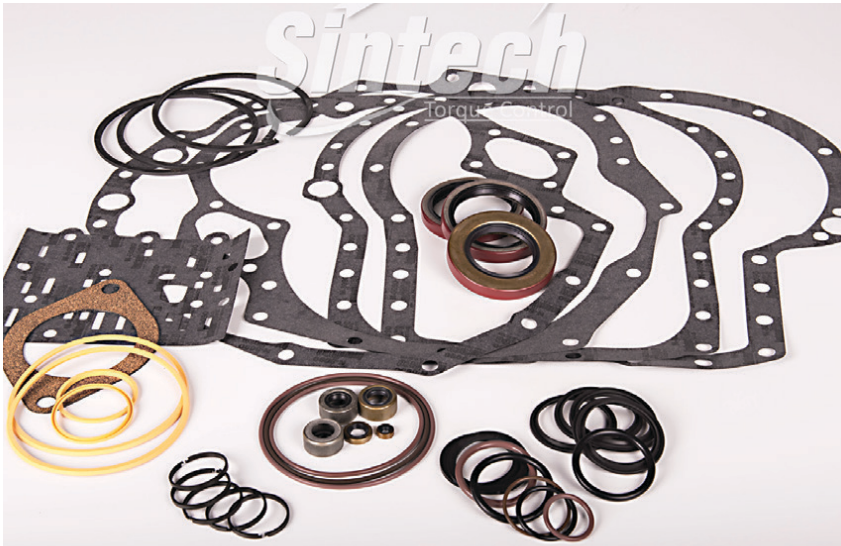
CPT SALES TEAM:

Pottie
Gerrie
Melaney





CLARK DANA
AXLE, BRAKE & TRANSMISSIONS



29 Romeo Street, Boksburg, South Africa
www.sintech.co.za | sales@sintech.co.za | +27 (0)11 823 2359



@sintechza



@sintechza



@sintech



Proudly a BBBEE
LEVEL 1 CONTRIBUTOR



WE SPECIALISE IN A LARGE VARIETY OF NEW & REFURBISHED EARTHMOVING PARTS AND COMPONENTS.

**BULLDOZERS - EXCAVATORS - MOTOR GRADERS
TLB's - WHEEL LOADERS - ROLLERS - WHEEL DOZERS
SKIDSTEERS - ARTICULATED & RIGID DUMP TRUCKS
USED & REFURBISHED ENGINES**

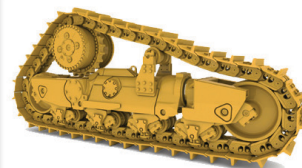
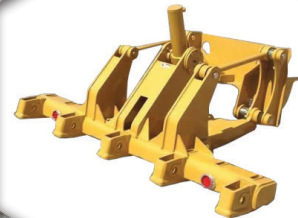
POWERING PERFORMANCE ONE PART AT A TIME.



**THE EXPERTS IN
MACHINERY COMPONENTS**

**VISIT OUR WEBSITE TO VIEW OUR FULL
RANGE OF AVAILABLE PARTS & ENGINES**

www.duraparts.co.za



WE STOCK USED & REFURBISHED PARTS FOR THE FOLLOWING BRANDS:

BELL

CASE

CAT

DOOSAN

HITACHI

JCB



JOHN DEERE

KATO



KOBELCO

KOMAT'SU

LIEBHERR



MITSUBISHI



TEREX

VOLVO

**Tel: +27 82 691 9524 • Adriaan : +27 71 234 6234 • Tiaan : +27 72 290 4136
Email : admin@duraparts.co.za • 222 Lemmer Rd, Vulcania, Brakpan 1541**



Phemba Equipment

116 Bayley Street Farrarmere Benoni 1501
Siya@phembaequipment.com
Office: 087 945 5432 | Fax: 087 945 5433 | Cell: 060 526 5432



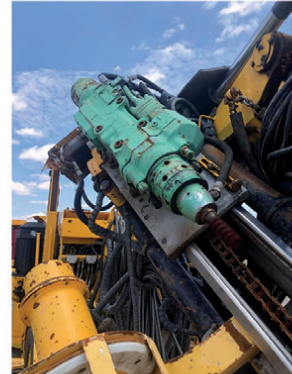
AARD 5.5 LHD
Rebuild with 0 hrs
@ **R2.7Mil** Ready to work



3 x SANDVIK EJC 115
Rebuild with 0 hrs ready to
work @ **R850K each**



SANDVIK TORO 10
Rebuild, ready to work with 2000 hrs
@ **R2.1 Mil**



1 x 2016 RESIMIN RAPTOR 55XP / Longhaul drill with only 320 hrs / **R2.8Mil** Excl. VAT
1 x 2016 RESIMIN RAPTOR 55XP / Longhaul drill with only 1675 hrs / **R2.2Mil** Excl. VAT

www.phembaequipment.com

**Earthmoving
Specialist**

**OLD & NEW
GENERATION EXPERIENCE**

FULL DIAGNOSTIC TROUBLESHOOTING

**REPAIRS, SPARES & MAINTENANCE TO
LEADING EARTHMOVING MACHINERY**

**SPECIALISING IN: CAT ECPC, ICM COUNTERSHIFT
& POWERSHIFT TRANSMISSION REBUILDING**

Carlos Caroto: 079 519 6769 | Email: jennycaroto@live.co.za

**Earthmoving
Specialist**

**Old & New
Generation Experience**

WE SPECIALIZE IN CUMMINS ENGINES

**REPAIRS, SPARES
& MAINTENANCE TO
LEADING EARTHMOVING
MACHINERY**

Full Diagnostic
Troubleshooting

Carlos Caroto: 079 519 6769 | Email: jennycaroto@live.co.za

THE PARAMOUNT GROUP

Tracks & Equipment

We are level 1 B-BBEE company with a National Footprint and SADC reach

We procure diversified extended offerings in the Manufacture and refurbishment of Buckets, Bowls and supply of Undercarriage, GET in the mining and related industries.

Paramount has been trading since 2013. We offer Professional Engineering services to the mining industry. We strive for innovation and utilize the best material available in the market and offer best fit solutions for our customers. Understanding our customer reequipments is important. We source and provide them with best engineering solutions that are suitable for their operations.

Paramount has aligned with only the best manufactures within this industry, Combi wear parts (GET), ITM (Undercarriage), SSAB on their Hardox and XMOR range. With these partnerships we are able to service large mining companies from a manufacturing and refurbishment perspective.



Our commitment to continuous improvement and innovation drives our ongoing and growing African presence. Please feel free to contact us for more information about Our industry-leading products and services.



Your Partner in Mining Equipment Solutions



Gauteng
32 VAN BUUREN ROAD
HANS MERENSKY OFFICE PARK
BEDFORDVIEW, JHB
TEL: + 27 10 007 3258

Mpumalanga
2 WATT STREET
INDUSTRIAL AREA
MIDDELBURG
TEL: 0101 007 3109

Northern Cape
RIETBOK STREET, OFFICE 5
NS&R BUILDING, KATHU
TEL: 082 902 6376 /
072 849 6970

Botswana
PLOT 454
JWANENG
TEL: 00 27 007 3258
+267 71 968 840

Ghana
4 GATEWAY OF COMMUNITY 12
TEMA
GHANA
TEL: +233 2944 13989

Lesotho
SEHALAHALA ST. NO.32
RECECOUSE AREA
MASERU, LESOTHO
TEL: +266 5111 6442

Contact us on sales@paramounttracks.com & sales@paramount-equipment.com
or visit our website at www.paramounttracks.com



PROUD SUPPLIERS OF:

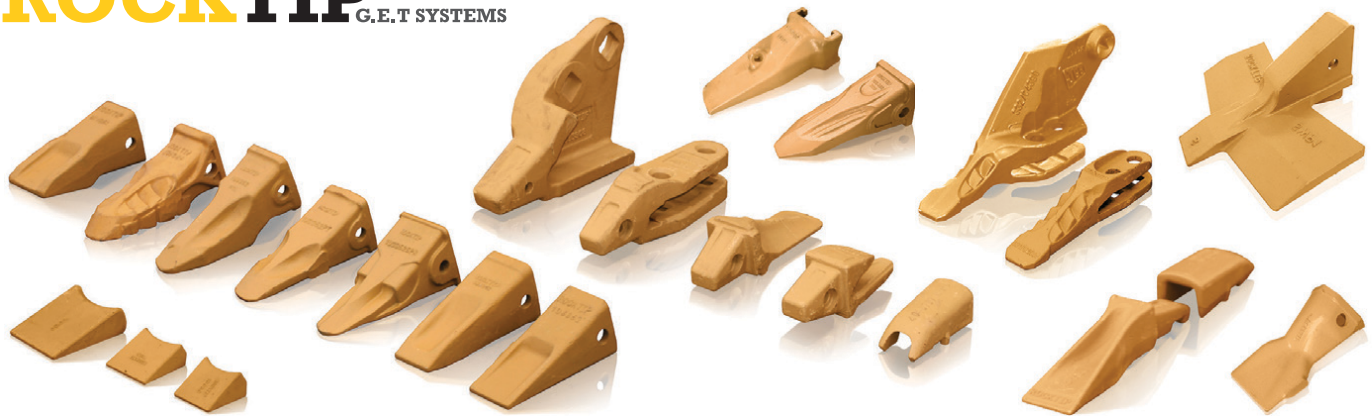




SPEC-CAST WEAR PARTS
Trusted to deliver

Spec-Cast Wear Parts (PTY) Ltd is a leading manufacturer specializing in the supply of ground engaging tools, undercarriage, undercarriage components, track frames, suspension group replacement parts, agricultural wear parts, general castings and forgings for the construction, mining and agricultural industries.

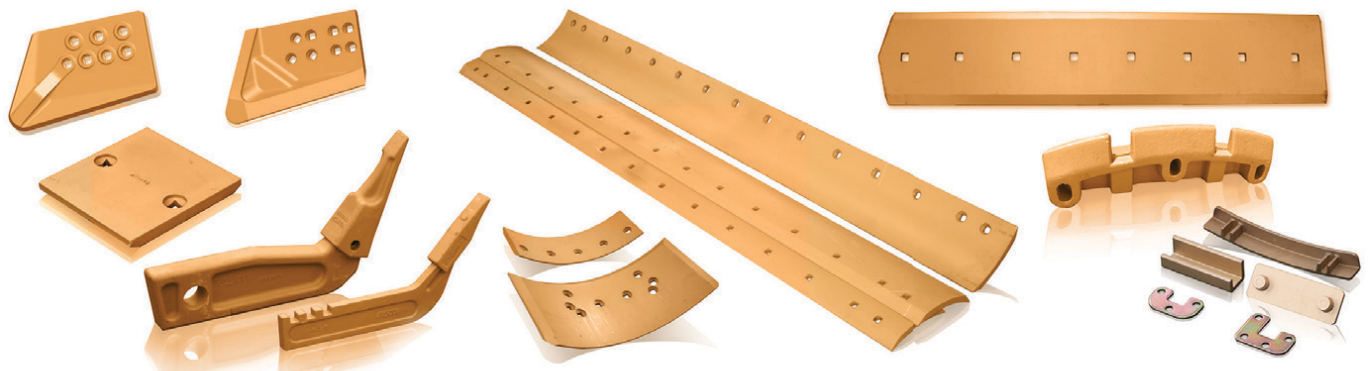
ROCKTIP G.E.T SYSTEMS



Teeth and Adapters for Various Models



Wear Protection



Blades, Cutting Edges, End Bits and Grader Wear Parts

Manufacturers of G.E.T to fit:

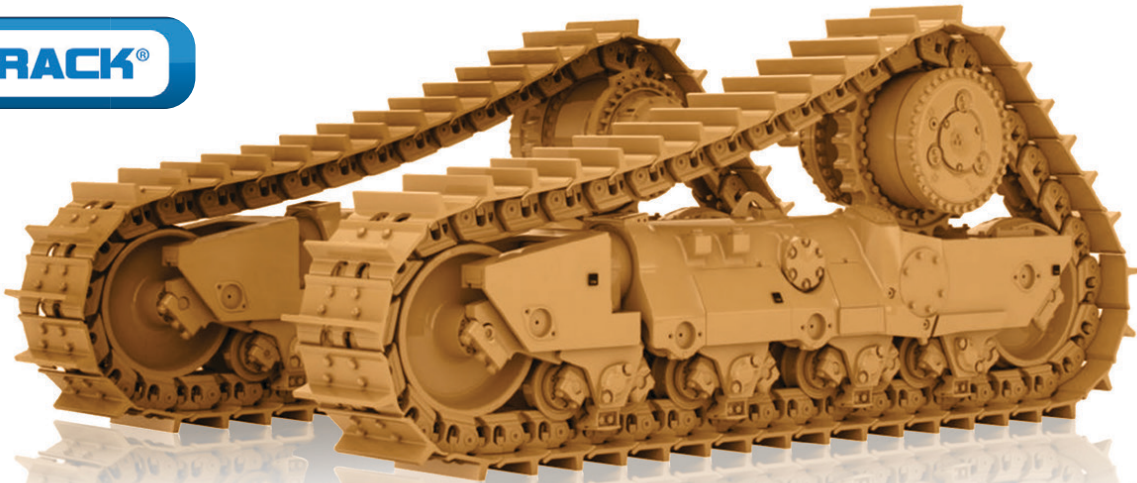
CATERPILLAR	TEREX	ESCO	LIEBHERR	H & L	BOBCAT
KOMATSU	JCB	HYUNDAI	DAEWOO	BUCYRUS	MTG
NEW HOLLAND	MASSEY FERGUSON	CASE	BOFOR	LIUGONG	KUBOTA

Manufacturer's names, numbers, symbols and descriptions are used for reference purposes only and it is not implied that any part listed above is the product of the manufacturers.

Spec-Cast offers a wide range of undercarriage components covering the entire range of modern crawler machine applications in the construction, mining, utility, forestry, road, building, and agricultural industries. Covering all makes and models of machines, from drilling machines to hydraulic excavators, as well as dozers, auxiliary machines, conveyors and customised solutions.



SPEC-CAST WEAR PARTS
Trusted to deliver



Spec-Cast Wear Parts is an authorized Dealer for ITM and VEMATrack undercarriage parts.
Call our undercarriage experts today!



Chains



Rollers



Sprockets



Idlers



Shoes



Rubber Tracks

CATERPILLAR	HITACHI	KOMATSU	LIEBHERR
6018 RH90	EX1200	PC1250	R9100
6030 RH120E	EX1800/1900	PC2000	R9150
6040/50	EX2500/2600	PC3000	R9250
RH170/200	EX3500/3600	PC4000	R9350
6060 - RH340	EX5500/5600	PC5500	R9400
7495 - 495HRH	EX8000	D375	R995
D8, D9, 10 & D11		D475	R996
			R9800

Our track workshop is available to support all your undercarriage needs

Turning of Pins & Bushes
Remove/Fit Track Shoes

Re-Build Idlers
Re-Shell Rollers

Re-Strip Grouser Shoes
Re-Rim Sprockets

With branches and distributors located in prime areas throughout South Africa, as well as several African countries, Spec-Cast is able to provide the Earthmoving, Mining and Agricultural industries with an efficient, cost effective supply and distribution network.

JHB HEAD OFFICE

+27 11 396 1717/13
aimee@spec-cast.co.za
11 Elgin Street, Pomona,
Kempton Park, Johannesburg

www.spec-cast.co.za

MIDDELBURG
+27 13 813 1413
middelburg@spec-cast.co.za
6 Jaspis Street
Middelburg, Mpumalanga

NORTHERN CAPE
+27 53 010 1304
northerncape@spec-cast.co.za
Section C3, Portion of Farm Waterraad
Kathu, Northern Cape

Follow us:





PARTS TO SUIT CAT 777 SERIES DUMP TRUCKS

Enhanced Performance parts for CAT 777 series dump trucks used to improve operational efficiency and reduce maintenance costs.



BALL STUD

Reference No: 7D1292 / 2730120

R3,900.00



BALL STUD KIT

Reference No: 7D1292KIT

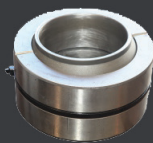
R6,900.00



A-FRAME PIN

Reference No: 8X0573

R15,280.00



A-FRAME BEARING

Reference No: 6V0444

R20,500.00



A-FRAME KIT

Reference No: 8X0573KIT

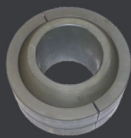
R72,000.00



REAR STRUT PIN

Reference No: 9D2278

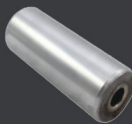
R4,100.00



REAR STRUT BEARING

Reference No: 8J8906

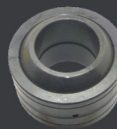
R8,610.00



STABILISER BAR PIN

Reference No: 7D3009

R2,980.00



STABILISER BAR BEARING

Reference No: 7J3297

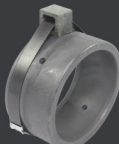
R6,650.00



HOIST CYLINDER PIN

Reference No: 5T9266

R5,940.00



HOIST CYLINDER BEARING

Reference No: 9D2319

R3,950.00



STEERING PIN

Reference No: 8X1847

R6,500.00



STEERING BUSH

Reference No: 8X6729

R3,860.00



BIN MOUNTING PIN ASSEMBLY

Reference No: 8W8454

R8,900.00



PROPSHAFT MAIN SHAFT

Reference No: 2G-4080 / 1725232

R59,300.00

Prices valid until the end of November 2021

JHB HEAD OFFICE

+27 11 396 1717/13
info@spec-cast.co.za
11 Elgin Street, Pomona,
Kempton Park, Johannesburg

www.spec-cast.co.za

MIDDELBURG
+27 13 813 1413
middelburg@spec-cast.co.za
6 Jaspis Street
Middelburg, Mpumalanga

NORTHERN CAPE
+27 53 010 1304
northerncape@spec-cast.co.za
Section C3, Portion of Farm Waterraad
Kathu, Northern Cape

Follow us:






504 Pretoria Road, Fairleads, Benoni 1501


TEL: 011 1003/1865

• Seals • Bearings • Hydraulic Components


WE PROVIDE OUR CUSTOMERS WITH THE BEST SERVICE, WITH TEN YEARS EXPERIENCE IN THE INDUSTRY




-SEALS-




-BEARINGS-




-TOOLS &
INDUSTRIAL
SUPPLIES-



-CHROMESTOCK-



-Hydraulics-



-Plastic Engineering-

-BRANDS WE CATER FOR-





DOZER

EARTHMOVING

T +27(0)11 452-1224 Danie +27(0)1182 441-2895 / Greg +27(0)11 71 683-6012

21 Simba Street, Sebenza, Edenvale, Johannesburg, Gauteng, South Africa

MACHINES BEING STRIPPED FOR PARTS

CATERPILLAR	LIEBHERR	KOMATSU
<ul style="list-style-type: none">• 725, 730, 740 ADT's• 777D/F Dump Truck• 785D Dump Truck• 988G/H Wheel Loader• 992G Wheel Loader• D11R/T Dozer	<ul style="list-style-type: none">• R984 Excavator• R9100 Excavator• R9350 Excavator	<ul style="list-style-type: none">• HD785 - 5• WD600 - 3



CAT 725
Service Truck For Sale



2 x CAT 773E
Dump Trucks For Sale



CAT 834K
Wheel Dozer For Sale



CAT 962H
Wheel Loader For Sale



CAT 769D
Water Tanker For Sale



CAT 824G Series 2
Wheel Dozer For Sale



CAT 988G 3456
Engine Assembly For Sale



CAT 992G 3508
Engine Assembly For Sale



CAT 773D/E
Final Drives For Sale



CAT 777F
Final Drives For Sale (Exchange)



CAT 992G/K
Final Drive Groups For Sale



CAT D11R/T
Final Drives For Sale



+27(0)172 338 2196

E info@dozer.co.za

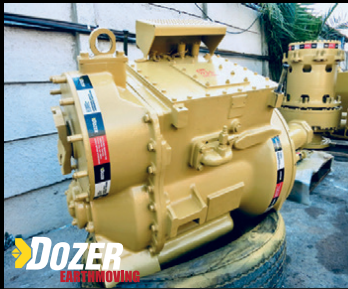
W www.dozer.co.za



www.instagram.com/dozerearth



www.facebook.com/dozerparts



CAT 773D/E
Transmission Group For Sale



CAT 777F
Transmission Gp For Sale (Exchange)



CAT D9T
Transmission Group For Sale



CAT D11R/T
Transmission Group For Sale



CAT 725/730
Final Drives For Sale



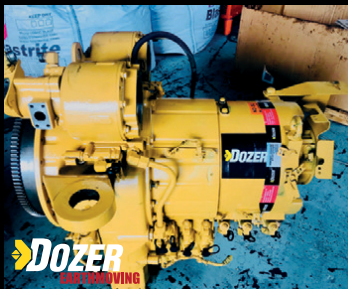
CAT 740
Final Drives For Sale



CAT 725/730
Differential Groups For Sale



CAT 740
Differential Group For Sale



CAT 725/730
Transmission Group For Sale



CAT 740
Transmission Group For Sale



CAT 725/730
Cabin Group For Sale



CAT 740
Cabin Group For Sale



CAT 740
Diesel Tank For Sale



CAT 777D/F
Bowl Assembly For Sale



CAT 988G
Bucket Group For Sale



CAT 992G
Bucket Group For Sale



Liebherr 9350
Splitter Box For Sale



Liebherr 9350
Swing Gear For Sale



Liebherr 9350
Cylinders For Sale



Liebherr 9350
Bucket Group For Sale

VENDEL EQUIPMENT SALES (PTY) LTD

T/A | ASSOCIATED EQUIPMENT

TEL: (011) 801-4911/2/3 Website: www.associatedequipment.co.za Plot 92 Indaba Lane- off Beyers Naude Road
 FAX: (011) 801-4914 Rietfontein (Roodepoort), GAUTENG
 E-mail: vendels@mweb.co.za E-Mail: associatedloraine@xnet.co.za

Contact: DUNCAN - Cell: 083 626 5588/ ANTON - Cell: 082 923 5397/ JAAP - Cell: 082 892 1327 / LORAINÉ - Cell: 076 021 4344
 For Tyres contact Loraine at (011) 801 4911/2/3 or on 076 021 4344
 GPS Co-ordinates - S26°3'53.343 - E27°52'37.453



2 x Cat 140H Motor Graders
with Rippers



2 x Caterpillar 140G Motor Graders
with Rippers



1 x Komatsu GD650 Motor Grader
with ripper



1 X Cheng Gong MG1320B
with Ripper



2 x 2021New / Unused
Cat 323D3 Excavator's



1 x 2021 New / Unused
Cat 320D3 Excavator



1 x 2009 Cat 320D2
Excavator



1 x 2011 Caterpillar 336D Excavator
1x 2012 Hyundai 300LC-95 Excavator
1x 2013 Komatsu PC850 Excavator



2 x 2014 Sany 668C
Front end Loader's



1 x 2007 Caterpillar 980H
Front end Loader



1 x 2013 Cat 950H
F.E.L



1 x 2011 Bell 1806E F.E.L
1 x 2014 JCB 456 Front end Loader



1 x 2008 Hamm HD120
Smooth Drum Roller



3 x 2011,2013,2016 Hamm 3520
Smooth Drum Rollers
1 x 2009 Bomag BW219D-4 SDVR



2 x 2018 Hamm 3411 SDR'S
1x 2014 Bomag BW212D-40 SDR



1 x Dynapac CS142N
3 Point Steel drum Roller - 13 Ton
1 x 2006 Bomag BW120AD-4 DDVR

 Standard Bank  WesBank

 ABSA  NEDBANK



VENDEL EQUIPMENT SALES (PTY) LTD

T/A | ASSOCIATED EQUIPMENT

TEL: (011) 801-4911/2/3 Website: www.associatedequipment.co.za Plot 92 Indaba Lane- off Beyers Naude Road
 FAX: (011) 801-4914 Rietfontein (Roodepoort), GAUTENG
 E-mail: vendels@mweb.co.za E-Mail: associatedloraine@xnet.co.za

Contact: DUNCAN - Cell: 083 626 5588/ ANTON - Cell: 082 923 5397/ JAAP - Cell: 082 892 1327 / LORAINE - Cell: 076 021 4344
 For Tyres contact Loraine at (011) 801 4911/2/3 or on 076 021 4344
 GPS Co-ordinates - S26°3'53.343 - E27°52'37.453



1 x Hamm GRW18 PTR
 1 x Hamm GRW15 PTR
 2 x Hamm GRW24 PTR



1 x Caterpillar PF300C 7 Wheel PTR
 1 x Ingersoll-Rand 27Ton PTR



4 x 2021 New / Unused
 Case 851EX 4x4 Magnum TLB's
 1 x 2017 Case 570T 4x4 TLB



2 x 2021 Manitou 844S
 4x4 TLB's



3 x 2015, 2011, 2010
 JCB 535-140 Telehandler's
 1 x 2014 JCB535-125 Telehandler



1 x Komatsu D275-5A Dozer



1 x 2016 Doosan DX62R-3
 Excavator Piped for Hammer



1 x 2013 Wacker 50Z3
 Excavator



1 x Scania P380
 Water Tanker 16 000L



1 x Caterpillar 725 Water Cart
 23 000 Liters



1 x 2016 F. A. W 10M³ Truck



1 x 2016 F. A. W 10M³ Truck



1 x Broce Broom
 1 x Lighting Plant



1 x Etnyre K Chip Spreader
 Mechanical
 1 x TLB Hydraulic hammer



1 x 2018 Kamaz 65222 6x6 15M³ Tipper
 1 x 2004 Terex TA30 6x6 Dump Truck



1 x Benford TV1200 DDV Roller
 1 x Terex TV1200 DDV Roller
 1 x Bomag BW120AD-4 Roller



1 x Gallion 10 Ton Crane
 1 x Tando TR250M-5 Crane
 1 x Tando TR80M 18 Ton Crane



2 x Ford Mobilift
 1 x 5 Sided impact roller



Hamm 3411 Rollers Stripping
 7 x Excavator - Loader Buckets
 Caterpillar 140G Spares



20.5 x 25 L3, 23.5 x 25L3, 17.5x25
 Rock Grip L4, 17.5x25 L3,
 12.5x80x18, 1400x24L3, 16.9x28
ALL NEW TYRES

GPS CO-ORDIANATES: S26°3'56.343 - E37°52'37.453

www.associatedequipment.co.za / www.vendequipmentsales.co.za



AFRICA'S LEADING EARTHMOVING EQUIPMENT & PARTS DEALER

www.blcplant.com ☎ +27 11 555 2000 ✉ info@blcplant.com

PLANT

PARTS

RENTAL



HYDRAULIC EXCAVATORS

CAT 320D, 325D, 329D, 330D, 336D, 345D, 349D, 365C, 374D/F, 385C, 390D/F



DOZERS

CAT D6R, D6T, D7R, D8R, D9R/T, D10T, D11T



RIGID DUMP TRUCKS

25 X CAT 777D, 5 X 777F



MOTOR GRADERS

CAT 140G, 140H, 140K, 14H, 16G, 120H, 14M, 16H, 16M



ARTICULATED TRUCKS

BELL B40D, B35D



ARTICULATED TRUCKS

CAT 725, 730, 740, 740B, 745C



CAT EXCAVATOR

323D- 2017



ARTICULATED WATER TANKERS

CAT 725, 730, 735, 740B, 773F, 777D
BELL B40D, B20D



FRONT END LOADER

CAT 992 K



TRACTOR LOADER BACKHOES

CAT 428F, 428F2, 426F, 450E



COMPACTION ROLLERS

BOMAG BW212-3, BW213D, BW219-3
CAT CS533, CP 533E, CS563E, CS76



FRONT END LOADERS

CAT 950H, 950GC, 966H, 962H, 972H, 980H, 988G, 992K

**LARGEST STOCK OF
PARTS** IN THE
SOUTHERN HEMISPHERE

Service exchange units available.

6 MONTHS WARRANTY
on refurbished components.

View all our available
stock on our website
www.blcplant.com



BLC Plant purchases earthmoving equipment for stock, rebuilds it as required in the fully equipped on-site workshops and then sells it to users in various industries. We focus on delivering products which meet customer specifications, offer buyers a viable alternative to new equipment and provide excellent after sales service and support.

PLANT

View all our available stock on our website
www.blcplant.co.za

PLANT - STOCK READY TO GO



CAT D11T
2011



CAT 966H
2013



TADANO
TR250M-4 CRANE



TADANO
TR250-5 CRANE



CAT MOTOR GRADER
120H



INGERSOLL-RAND ROLLERPACK
27T



BOMAG BW212 PAD FOOT ROLLER
2013



MAHINDRA VX90 4X4
2021

TRUCKS - STOCK READY TO GO



MERCEDES AXOR 2628 14000L WATER TANKER
(2008)



MERC-BENZ ACTROS 3331 ROCK BIN
(2008) X 3



VOLVO 18000L WATER TANKER
(2012) 5 AVAILABLE



MERCEDES ACTROS 3331 TIPPER TRUCK
(2007)

Call us now

+27 (0)11 555 2000

or visit

www.blcplant.com

for our latest stock.



Largest stock of parts in the southern hemisphere. Service exchange units available.

www.blcplant.com

+27 11 555 2000

info@blcplant.com

Corner Wynberg Road and 2nd Avenue, Kew

PARTS



**WE STRIPPED OVER
3000 CAT MACHINES
FOR PARTS**



PARTS WORKSHOP



WE ONLY USE GENUINE PARTS

6 MONTHS WARRANTY on refurbished components



CATERPILLAR
Dozer Engines



CATERPILLAR
Dozer Final Drives



CATERPILLAR
Grader Transmissions



CATERPILLAR
Loader Axles



CATERPILLAR
Loader Transmissions



CATERPILLAR
Grader Axles

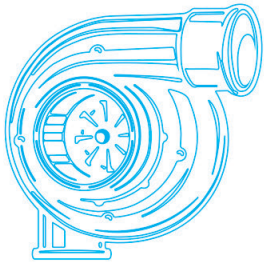


CATERPILLAR
Transfer Box



CATERPILLAR
Off Highway Transmissions

Call us now **+27 (0)11 555 2000** or visit www.blcplant.com for our latest stock.



TURBOWORKS

"Best quality turbochargers – no compromise"



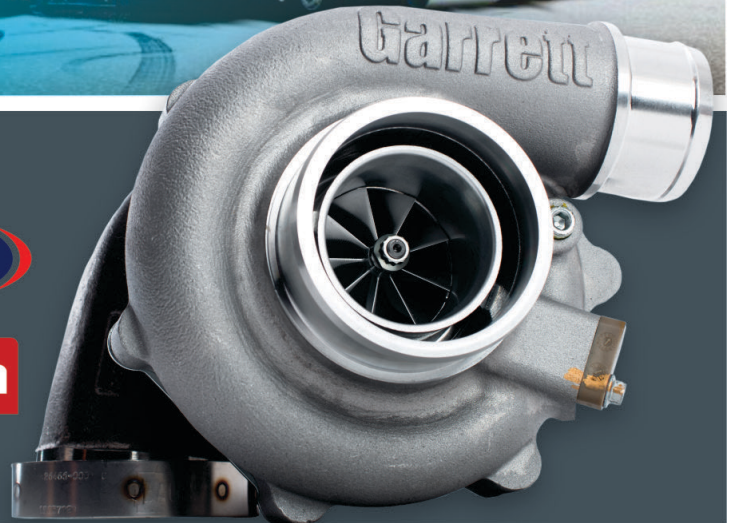
Turbochargers

- New
- Reconditioned, service-exchange
- Repairs

Sectors

- Mining
- Plant hire
- Transport
- Agriculture
- Passenger vehicle
- Generators

- All makes and models
- 12 Months warranty
- Free "Strip-and-quote"
- Pick-up and deliver
- Supplying the entire African continent



Tel: +27 12 653 7507

Email: sales@turboworks.co.za

www.turboworks.co.za

After-hours: +27 82 824 8037

www.espa.co.za

ESP THE PROVEN ALTERNATIVE



Multi-brand parts suitable
for **CATERPILLAR**
earthmoving machinery



BENEFIT FROM OUR 9 MONTHS WARRANTY PERIOD ON NEW PARTS

ESP Johannesburg
Tel: (011) 398-1700

ESP Benoni
Tel: (011) 845-2911

ESP Pretoria
Tel: (012) 804-6706

ESP Middelburg
Tel: (013) 246-2520

ESP Pinetown
Tel: (031) 705-4200

ESP Cape Town
Tel: (021) 945-1030

ESP Port Elizabeth
Tel: (041) 484-4575

ESP Bloemfontein
Tel: (051) 432-4501

ESP Kimberley
Tel: (053) 831-8349

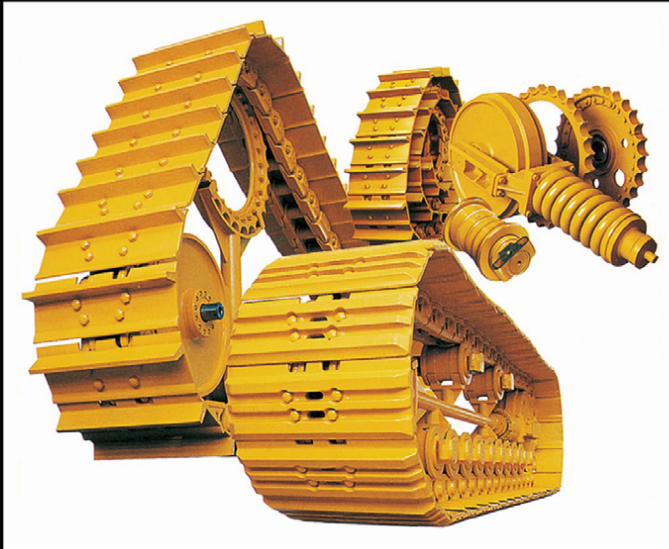


ISO 9001 Certified

Manufacturers' names, numbers, symbols and descriptions are used for reference purposes only and it is not implied that any part listed is the product of the manufacturers.

www.espa.co.za

ESP THE PROVEN ALTERNATIVE



BERCO undercarriage for earthmoving machinery



BENEFIT FROM OUR 9 MONTHS WARRANTY PERIOD ON NEW PARTS

ESP Johannesburg
Tel: (011) 398-1700

ESP Benoni
Tel: (011) 845-2911

ESP Pretoria
Tel: (012) 804-6706

ESP Middelburg
Tel: (013) 246-2520

ESP Pinetown
Tel: (031) 705-4200

ESP Cape Town
Tel: (021) 945-1030

ESP Port Elizabeth
Tel: (041) 484-4575

ESP Bloemfontein
Tel: (051) 432-4501

ESP Kimberley
Tel: (053) 831-8349

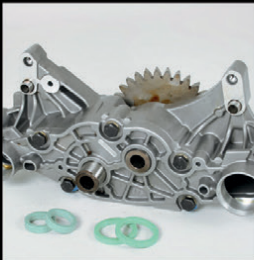


ISO 9001 Certified

Manufacturers' names, numbers, symbols and descriptions are used for reference purposes only and it is not implied that any part listed is the product of the manufacturers.

www.espa.co.za

ESP THE PROVEN ALTERNATIVE



replacement parts
suitable for **VOLVO**
earthmoving machines



ADT A20, A25, A30, A35, A40 • Wheel Loader L60, L70, L90, L110, L120, L150, L180
Excavator EC210, EC240, EC290, EC360, EC460 • TLB BL61, BL71

BENEFIT FROM OUR 9 MONTHS WARRANTY PERIOD ON NEW PARTS

ESP Johannesburg
Tel: (011) 398-1700

ESP Benoni
Tel: (011) 845-2911

ESP Pretoria
Tel: (012) 804-6706

ESP Middelburg
Tel: (013) 246-2520

ESP Pinetown
Tel: (031) 705-4200

ESP Cape Town
Tel: (021) 945-1030

ESP Port Elizabeth
Tel: (041) 484-4575

ESP Bloemfontein
Tel: (051) 432-4501

ESP Kimberley
Tel: (053) 831-8349



ISO 9001 Certified

Manufacturers' names, numbers, symbols and descriptions are used for reference purposes only and it is not implied that any part listed is the product of the manufacturers.

www.espa.co.za

ESP THE PROVEN ALTERNATIVE



Multi-brand parts suitable for
KOMATSU
earthmoving machinery



BENEFIT FROM OUR 9 MONTHS WARRANTY PERIOD ON NEW PARTS

ESP Johannesburg
Tel: (011) 398-1700

ESP Benoni
Tel: (011) 845-2911

ESP Pretoria
Tel: (012) 804-6706

ESP Middelburg
Tel: (013) 246-2520

ESP Pinetown
Tel: (031) 705-4200

ESP Cape Town
Tel: (021) 945-1030

ESP Port Elizabeth
Tel: (041) 484-4575

ESP Bloemfontein
Tel: (051) 432-4501

ESP Kimberley
Tel: (053) 831-8349



ISO 9001 Certified

Manufacturers' names, numbers, symbols and descriptions are used for reference purposes only and it is not implied that any part listed is the product of the manufacturers.

GOOD USED EARTHMOVING PARTS AND EQUIPMENT

STM

MINING EQUIPMENT PTY(LTD)

Tel: (011)894-6192 / (011)894-3377

Fax: (011)894 7914

barney@stmmining.co.za

donovan@stmmining.co.za

Office Hrs: Mon-Fri 07h00-17h00

OUR PRODUCTS & SERVICES

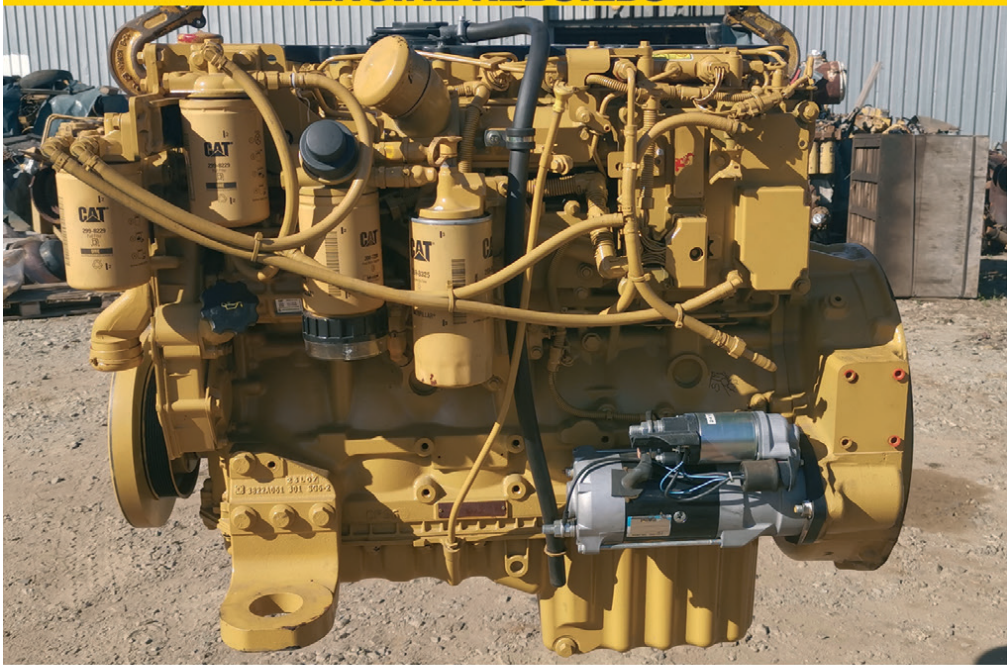
We supply second hand machines and good used parts for most makes of Earthmoving Equipment ie: Cat, Komatsu.

We buy second hand machines to strip for components and parts, dead or alive to keep in stock for customers.

We have a repair shop where we do components and Repair machines for Customers.



ENGINE REBUILDS



MACHINE REBUILDS

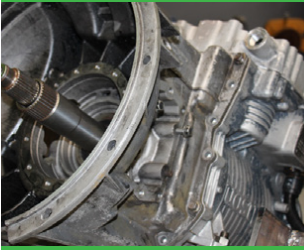


www.stmmining.co.za

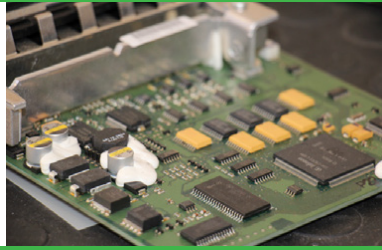
PO Box 6456, Dunswart 1508, 40 Michelson RD. Westwood, Boksburg

Our Integrated Approach

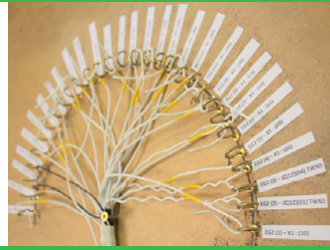
Transmission Rebuilds



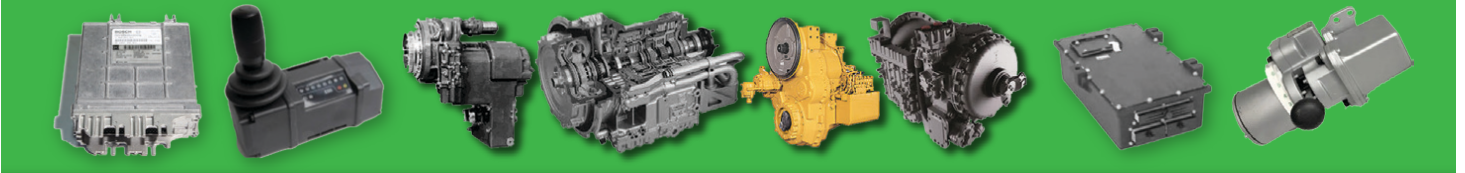
Electronics Laboratory



Wiring Harness Workshop



Vehicle Repairs



New Beginnings Designs rebuilds off highway automatic transmissions and repairs transmission control units and gear selectors.

Visit our website for more info: www.nbdesigns.co.za



We specialise in:

- Transmission overhauls & repairs: Allison, Caterpillar, Clark, Komatsu & ZF
- Ecu & gear selector repairs & design
- Wiring harness repairs & manufacturing
- Dynamometer design & manufacture
- Off-highway vehicle rebuilds & repairs. (Mechanical & electronic)
- Service Exchange
- Transmissions in stock!



@newbeginningsdesigns



@nbdesigns.sa

CONTACT US

Phone: +27 11 791 4120

Email: suken@nbdesigns.co.za

Address: 1146 Minnie Postma Avenue, Florida 1709





Johannesburg
t: +27 (11) 614 0070
sales@itrafrica.com

Cape Town
t: +27 (21) 905 7340
capetown@itrafrica.com

Port Elizabeth
t: +27 (41) 451 2222
portelizabeth@itrafrica.com

East London
t: +27 (43) 748 3541
eastlondon@itrafrica.com

TWISTER

COMPATIBLE WITH
ESCO SUPER V®



T2

COMPATIBLE WITH
ESCO SV2®



X2

COMPATIBLE WITH
HENSLEY XS®



miner

MINER 950, 1100, 1300 & 1450
SOLID TEETH & ADAPTERS
COMPATIBLE WITH
ESCO POSILOK®
SIZES 95 TO 145



The FUTURA Wear Technology Premium range is designed for cable shovels, draglines, hydraulic face shovels and mining excavators up to 800 tons.

The main features are its hammerless solutions that increase safety and reduce downtime, its proven performance with extra weight invested in reinforcing the key areas of the tooth where it has more exposure to wear, and its design with lateral and central ribs contributing to facilitate the flow of material, significantly extending the life while retaining its self-sharpening properties.

miner

MINER 1100, 1300 & 1450
TEETH & INTERMEDIATE
ADAPTERS
COMPATIBLE WITH
ESCO POSILOK®
SIZES 110 TO 145



CAST LIPS AND A FULL RANGE OF
BUCKET PROTECTION AVAILABLE

Manufacturer's names, numbers & descriptions are used for reference purposes only & it is not implied that any part listed is the products of the manufacturers



Pinetown
t: +27 (31) 941 1133
pinetown@itrafrica.com

Middelburg
t: +27 (13) 590 5614
middelburg@itrafrica.com

Bloemfontein
t: +27 (51) 011 5620
bloemfontein@itrafrica.com

Kathu
t: +27 (53) 723 2245
kathu@itrafrica.com

Namibia
t: +264 (83) 331 5160
namibia@itrafrica.com

Zambia
t: +260 (96) 351 3429
zambia@itrafrica.com

A WORLDWIDE LEADER IN AFTERMARKET EARTHMOVING PARTS AND SOLUTIONS

Undercarriage

Repair Parts

Ground Engaging Tools

Lubricants

Track Frames

Undercarriage Workshops

Field Service & Measuring



All Africa Supplies

GLOBAL REACH - LOCAL SUPPLY

www.allafricasupplies.net

011 918 9976

Enquiries: sales@allafricasupplies.net

228 All Black Road Anderbolt Boksburg

BELL



CARRARO

HITACHI

VOLVO

Construction Equipment

DOOSAN



CAT



HYUNDAI
HEAVY INDUSTRIES CO.,LTD.

Mobil

ISUZU

KOMATSU

*All manufacturers names, numbers, symbols and pictures are for reference only. It does not imply that any of the parts are the product of these manufacturers.



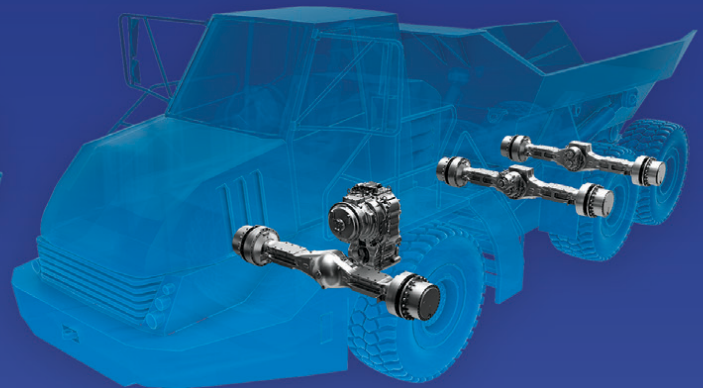
**AUTHORIZED
PARTS DISTRIBUTOR**

**A great journey starts
with ZF**

Innovative solutions. OE quality parts.
German technologie.



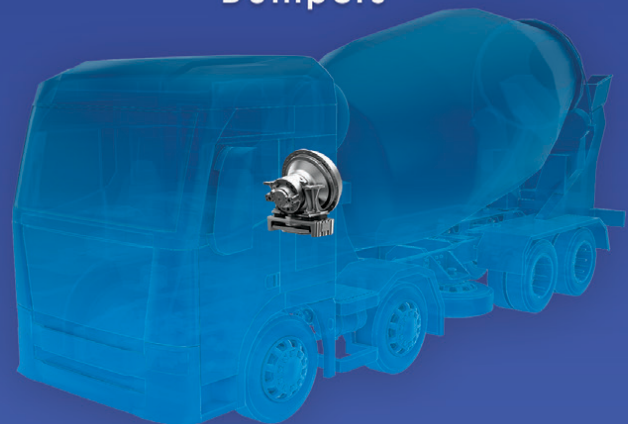
Wheel Loaders



Dumpers



Backhoe Loaders



Concrete Mixers

JCB



All Africa Supplies

GLOBAL REACH - LOCAL SUPPLY

www.allafricasupplies.net

011 918 9976

Enquiries: sales@allafricasupplies.net

228 All Black Road Anderbolt Boksburg

BELL



CARRARO

HITACHI

VOLVO

Construction Equipment

DOOSAN



CAT



HYUNDAI
HEAVY INDUSTRIES CO.,LTD.

Mobil

ISUZU

KOMATSU

*All manufacturers names, numbers, symbols and pictures are for reference only. It does not imply that any of the parts are the product of these manufacturers.

Parts & Components



Engine Rebuilds



Hydraulic Centre



www.allafricasupplies.net

Follow us on Social Media



Facebook / All Africa Supplies



Google+



Instagram / @allafricasupplies



Earth Mach

MINING AND CONSTRUCTION EQUIPMENT



Office: +27 17 843 2072

Sales

Chris: +27 81 728 6914

Klaas: +27 83 391 9046

Parts

Cindy: +27 72 757 2105

Michelle: +27 72 650 6603

Repairs on all types of equipment Cummins engine conversion on Komatsu TLB's / repair & supply of new radiators break & clutch repairs / general repairs & rebuilding / auto electrical repairs & rewiring / fuchs oils & greases / field service repairs

Distributors of SEM Construction Equipment

The performance you need The support you expect

DOZERS



A Caterpillar Brand

THE PERFORMANCE YOU NEED,
THE SUPPORT YOU EXPECT

GENIUNE SEM PARTS QUALITY AT ITS BEST



MOTOR GRADERS



WHEEL LOADERS



ROLLERS



**WHEN IT
REALLY
MATTERS.
WEARPACT.**

MANUFACTURERS, SUPPLIERS AND STOCKISTS OF:

**CUTTING EDGES | MOLD BOARD LINERS | GRADE BLADES
TIPS AND ADAPTORS | RIPPER SHANKS | END BITS**

WE MANUFACTURE, SUPPLY AND STOCK G.E.T. FOR:

**CAT | KOMATSU | VOLVO | HITACHI | BELL | LIEBHERR | JCB | CASE
TEREX | FURUKAWA | LIUGONG | SANY | SANYO | SHANTUI | FIAT**

WEARPACT ALSO OFFERS A SPECIALIST BUCKET REPAIR SERVICE

WEARPACT

☎ 011 421 4705 / 011 845 3234 / 011 845 3272

☎ 011 421 8761

✉ mwwrp@mweb.co.za

*MANUFACTURER'S NAMES, NUMBERS & DESCRIPTIONS ARE USED FOR REFERENCE PURPOSES ONLY. IT IS NOT IMPLIED THAT ANY PART LISTED IS THE PRODUCT OF THE MANUFACTURERS.

www.wearpact.co.za



Marsay Equipment specialises in the buying, refurbishment and selling of good used construction, mining, stone crushing and transport equipment.

We operate throughout southern Africa, mainly the SADC region. We are based in Johannesburg South Africa and have been in business for 44 years.

TIM MARSAY +27 83 654 4248
PATRICK MARSAY +27 79 187 7937

tim@marsayequip.co.za
www.marsay.co.za



**HADFILEDS 36X26 JAW CRUSHER
REBUILT**



**HADFIELD'S 16X10
JAW CRUSHER**



**WINGET 400 R
CONCRETE MIXER
DIESEL OR ELECTRIC**



**NEW KAROO MOBILE DRY
BATCHING PLANT**



**WATER & DIESEL TRAILERS
OF VARIOUS SIZES**

EQUIPMENT VALUATIONS
DO YOU NEED AN ACCURATE MARKET VALUE OF YOUR USED EQUIPMENT?
PLEASE CONTACT US!



**SALES & RENTALS OF
EXCAVATORS & TLB'S
WITH ATTACHMENTS.**

HEAD OFFICE	RENTALS	SALES
074 922 2382	082 887 8636	071 670 8707

BREAKING FOR SPARES

- CAT 330D
- CAT 320D
- KOMATSU PC400

MACHINES FOR SALE

- CAT 307 PIPED
- CAT 312 PIPED
- CAT 931 TRUCK LOADER
- CAT 320D & 330D PIPED
- JCB JS200 & JS205 PIPED
- VARIOUS SIZE EXCAVATOR

ENGINES FOR SALE

- CAT 3306
- CAT 3052
- CAT 3064
- CAT C7
- KOMATSU 60125 (375-5)
- ISUZU 6HK1 (HITACHI)

FOR ONSITE AIRCON REPAIRS

CONTACT DAVE: 083 600 3308

sales@rhinohammers.co.za | hire@phplant.co.za | cjago@global.co.za

www.rhinohammers.co.za | www.phplant.co.za



MACHINES FOR SALE



2013 - LIEBHERR 538 LOADER
(Automatic greasing system
and L5 tyres)
R400 000 + VAT



**2007
MERCEDES BENZ AXOR 2628**
(10m³ - Tipper)
R450 000 + VAT



1985 - MERCEDES BENZ 2629
(10m³ - Tipper)
R250 000 + VAT



**2 X 2004
VOLVO A25D 6X6 DUMPER TRUCKS**
(Fitted with greedy boards & Tailgate)
R550 000 + VAT



2006 - ISUZU F - SERIES
(10M³ - Tipper)
R350 000 + VAT



2008 - VOLVO L120F LOADER
(Automatic greasing system
and L5 tyres)
R500 000 + VAT.



1993 - MERCEDES BENZ 1414
(5M³ Tipper)
R185 000 + VAT



**1984
AVALING BARTFORD GRADER**
R250 000 + VAT



1997 - ISUZU FTR800
(5m³ - Tipper)
R 185 000 + VAT



Francois Gerber

082 454 0934 | charlesjnr@transand.net | 044 695 0105



SINCE 2013



Agri Earth

www.LNE-AgriEarth.com

+27 (0)861 888 008 | +27 (0)83 327 3237 (A/H)

LNE@LNE-AgriEarth.com

[@LNEAgriEarth](https://www.facebook.com/LNEAgriEarth)



**Spare Parts
Authorized Dealer**



S. MICHELL,

THE PLANT FINDER CC

The **RIGHT EQUIPMENT** at the **RIGHT PRICE**

USED PLANT AVAILABLE



1X 2012 CATERPILLAR 140K MOTOR GRADER

S/NO: SZL01366
SMR: 10925 HOURS.
FULLY ENCLOSED
AIR-CONDITIONED CAB.
1 OWNER, FSH.
POWER TRAIN GUARANTEE.
PRICE: R 1 850 000.00 + VAT.



1X 2004 DAEWOO (DOOSAN) MEGA 300-V FRONT END LOADER

SERIAL NO: 2025
SMR: 9678 HOURS
FULLY ENCLOSED
AIR-CONDITIONED CAB.
POWER TRAIN GUARANTEE.
PRICE: R 700 000.00 + VAT.

SHAWN MICHELL - 082 568 4033

Tel: 041-379 1717 / Fax: 041-379 4753

shawn@plantfinder.co.za



Follow & Like us on Facebook
facebook.com/ThePlantFinder

WWW.PLANTFINDER.CO.ZA

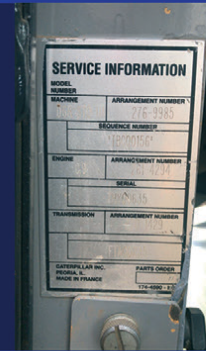


S. MICHELL,

THE PLANT FINDER CC

The RIGHT EQUIPMENT at the RIGHT PRICE

USED PLANT AVAILABLE



1X 2006 CATERPILLAR D6R III TRACKED DOZER

S/NO: TBC00156
SMR: 8000 HOURS
FULLY ENCLOSED ROPS CAB,
TILT BLADE & RIPPER.

PRICE: R 1 325 000.00 + VAT.



1X 2012 VOLVO EC240BLC PRIME TRACKED EXCAVATOR

S/NO: 15881
SMR: 6610 HOURS

PRICE: R 850 000.00 + VAT.

SHAWN MICHELL - 082 568 4033

Tel: 041-379 1717 / Fax: 041-379 4753

shawn@plantfinder.co.za



Follow & Like us on Facebook
facebook.com/ThePlantFinder

WWW.PLANTFINDER.CO.ZA



1 x MERCEDES BENZ ATEGO 1517 – 8000L DIESEL BOWSER
Year Model: 2000
KM Reading: 48232

BMH IS OFFERING THE FOLLOWING EQUIPMENT FOR SALE. ALL EQUIPMENT WAS PURCHASED NEW FROM THE RELEVANT O.E.M.

COMPLETE REPAIR AND MAINTENANCE HISTORY AVAILABLE UPON REQUEST.



1 x BELL 850J DOZER
Year Model: 2018
Hours (SMR): 6112



1 x HITACHI ZX470LC-5G HYDRAULIC EXCAVATOR
Year Model: 2013
Hours (SMR): 13563



1 x HITACHI ZX400LC-5G HYDRAULIC EXCAVATOR
Year Model: 2016
Hours (SMR): 14 949



2 x HITACHI ZX330LC-5G HYDRAULIC EXCAVATORS
Year Model: 2017
Hours (SMR): 9 173 & 15 539



6 x BELL B30D ARTICULATED DUMP TRUCKS
Year Model: 2008 - 2013 / Hours (SMR): Between 10 000 – 25 000 hours

Prices available on request.
Viewing of equipment can be arranged.

Contact Person:
Karen van Zyl – 011 964 1179 / info@bulkmachine.co.za





GROUNDBREAKING STUFF

Helping you move the earth with our Boron Heat-Treated Cutting Edges and Cast End Bits, *Giving You Extra Wear Life!*

*We manufacture & supply the full range of
Bulldozer Cutting Edges & End Bits.*



Our countrywide distribution network with a presence in all major centres ensures that no matter where you are, we are there with the right parts to keep you moving the earth.



Tel: +27 11 793 6838 | Fax: +27 11 793 6626
Web: www.rocktech.co.za | Email: derek@rocktech.co.za

ROCKTECH
ROCKTECH ESIZAYO AFRICA (PTY) LTD





Sole importer of the SAILUN OTR & Giant OTR Range



HARD WORKING TYRES DESIGNED FOR RIGIDS, DUMP TRUCKS (ADT), LOADERS AND CRANES

SUPERIOR PERFORMANCE LOWEST COST-PER-HOUR

SH920 - HIGHWAY SERVICE

S930 - E3/L3

S932 - E3/L3

S933 - E3

S941 - E4

S945 - E4/L4

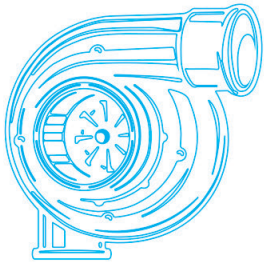
S951 - L5

S952 - L5S



Contact us now and enquire about our SAILUN OTR tyre range

Tewus Wessels, OTR Sales Manager | Tel. +27 (0) 83 639 2290 | tewus@safetygrip.co.za | www.safetygrip.co.za



TURBOWORKS

"Best quality turbochargers – no compromise"



Turbochargers

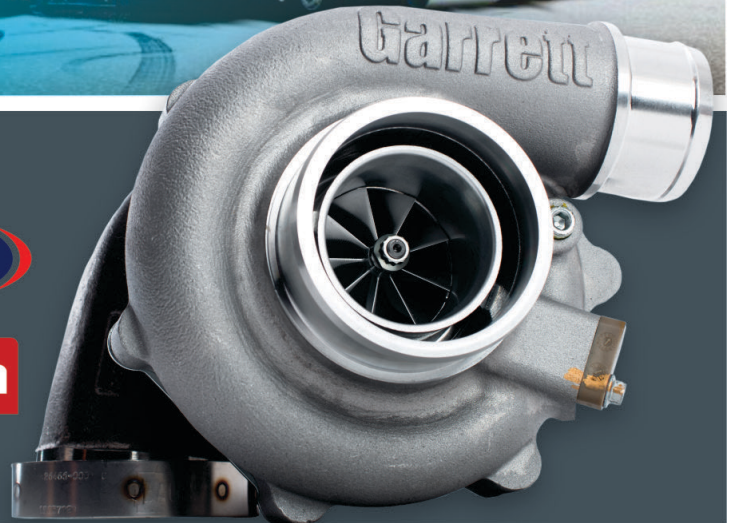
- New
- Reconditioned, service-exchange
- Repairs

Sectors

- Mining
- Plant hire
- Transport
- Agriculture
- Passenger vehicle
- Generators



- All makes and models
- 12 Months warranty
- Free "Strip-and-quote"
- Pick-up and deliver
- Supplying the entire African continent



Tel: +27 12 653 7507

Email: sales@turboworks.co.za

www.turboworks.co.za

After-hours: +27 82 824 8037



Contact Us
T: +27 10 001 9200
T: +27 11 392 7533
F: +27 11 392 7590

**WE OFFER A FULL LINE OF HIGH QUALITY
AFTERMARKET FUEL INJECTION PARTS.**

INFO@TAGS.CO.ZA



**PENCIL NOZZLE
IS ONE OF THE
MAIN
COMPONENTS OF
FUEL INJECTION
SYSTEMS. IT
REGULATES THE
FLOW OF FUEL
TO THE
ULTIMATE
IGNITION
COMPARTMENT.
DEMAND CTP
PENCIL NOZZLES
TO MINIMIZE
OPERATION
COSTS.**

TGS offers a full line of high quality aftermarket fuel injection parts.

TGS™ supplies OPM (Original Parts Manufacturers) Parts for your Earthmoving and Mining Machinery. We not only offer you premium parts but also an exceptional service, outstanding savings and the support you need to get your parts quickly and accurately.

TGS™ since the acquisition by Torre Industrial Holdings, is aggressively expanding into Africa and South Africa. Coupled with our already impressive distribution network in South African and Africa hotspots: Natal, Western Cape, Witbank, Johannesburg, Namibia and also a presence in Swaziland where TGS™ are the Wacker-Neuson dealers, TGS™ hopes to continue to expand our African reach and in so doing, become the most widely based OPM suppliers on the continent.

www.tags.co.za



Maintaining your equipment’s fuel system is optimal to running efficiently. Our expertise with the development of diesel fuel injection systems parts, make us highly capable in identifying and eliminating these potential problems.

Fuel Line Assembly

At TGS we have a complete reference of Fuel Assembly Lines for your convenience. We guarantee a top quality product that will carry fuel, oil and lubricants under low as well as high pressure and high temperature.

We offer a complete selection of Fuel line Assemblies for your equipment. Our fuel lines are made from the best materials, with specially designed high pressure steel fittings and adapters for a leak free connection.

All fuel lines are tested to work together as an assembly, ensuring a proper fit. We offer the best value product with OE form fit and function.

- Features and Benefits
- Premium quality cold drawn seamless carbon steel tubing.
 - Cold drawn process Increases strength allowing for 20% higher working pressures.
 - Superior surface finish, connections are treated to prevent oxidation.
 - CNC manufacturing process ensures precision and quality.
 - Dimensional accuracy and excellent micro-structure uniformity.



Fuel Line Assembly



FIELD SERVICES NOW AVAILABLE



Primeplant (Pty) Ltd
Tel: 011 979 4853 Fax: 011 396 1653
www.primeplant.co.za



We specialize in the repair & maintenance of **CAT** TLB's

INDUSTRIAL PLANT SOLUTIONS



ENGINES



TRANSMISSION



FINAL DRIVES



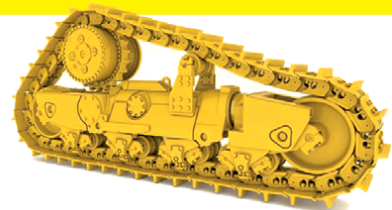
PUMPS



BUCKETS



MISCELLANEOUS



SUB ASSEMBLIES



C4.4 LongBlock
3116 Longblock
C11 Longblock
D8R Longblock
C15 Short Sub

CRANKSHAFTS ORIGINAL



C7 Crankshaft
C9 Crankshaft
C11 Crankshaft
C13 Crankshaft

D8R/T ORIGINAL



D8R Engine
D8R Final Drives
D8R Torque Converter
D8T Torque Converter

AVAILABLE ON THE FLOOR NOW!

New, used and reconditioned components - all makes.

If it's from your machine, we'll find a replacement!!

Contact Us:

✉: sales@ipsglobal.net

f: [facebook.com/IndustrialPlantSolutions](https://www.facebook.com/IndustrialPlantSolutions)



WhatsApp Message
+27 (0)82 405 3494

Inspections & Assessments Also Done



Jason Ward
+27 83 412 1077
jason@sa-ems.co.za



1 X 2008 MANITOU 1830
6500 HOURS - EXCELLENT CONDITION



1 X 2020 DOOSAN DX140
76 HOURS - LIKE NEW



1 X 1994 DYNAPAK 12 TON ROLLER
WORKING ORDER



1 X 2015 CATERPILLAR AP600
ASPHALT PAVER - 1400 HOURS



1 X 2016 JCB 3CX
3300 HOURS - VERY NEAT UNIT



1 X 2018 VÖGELE PAVER 1603
256 HOURS - EXCELLENT CONDITION



Jason Ward
+27 83 412 1077
jason@sa-ems.co.za



1 X 1988 CATERPILLAR 140G
READY TO WORK



1 X 2014 CATERPILLAR TH414
6500 HOURS



1 X 2012 DOOSAN DX140
9000 HOURS



1 X 2011 CATERPILLAR 428E
4800 HOURS



1 X 2018 BELL 315SL
1900 HOURS - VERY NEAT UNIT



1 X 2018 BELL 315SL
1900 HOURS - VERY NEAT UNIT



BABCOCK'S NATIONAL PARTS DISTRIBUTION CENTRE STREAMLINES SUPPLY CHAIN

Babcock Africa has established a new national parts distribution centre to enhance efficiency of its supply chain process across all the company's operations. The streamlined central warehouse will stock spare parts and components for all of Babcock's business units and will facilitate the swift dispatchment of items to all its national and regional branches.

Babcock delivers engineering support services to the energy, process, mining and construction industries, and is the exclusive regional distributor for many leading international brands. The wholesale distribution centre is located at what was previously Babcock's construction equipment warehouse in Johannesburg, and is already in full operation under the experienced guidance of Hans Roos, Head of Supply Chain, Babcock Africa. He says that combining an integrated warehouse with a supply chain function is in line with the 'one Babcock' ethos that promotes collaboration within the group, and will enhance the business's operational capabilities and potential. The warehouse currently holds parts and supports the logistical requirements for DAF Trucks and Babcock's full suite of construction equipment brands (Volvo Construction Equipment, Tadano, Sennebogen, SDLG and Winget). Plans are underway to incorporate Babcock's other business units into the national parts distribution centre. Roos says that the centralised facility is part of Babcock's new operating model to improve productivity and efficiency. Preparations for the move began last year, and had to take into consideration the challenges of establishing a central warehouse that would incorporate all of Babcock's existing logistical network lines across the various business units. Two different computerised management systems were integrated to receive and dispatch stock, while point of sale systems were incorporated into a single platform to efficiently control and manage parts supply. Marius Barnard, Managing Director for Babcock's Transport Solutions business, comments that Babcock customers were not affected by this consolidation as the supply chain continued to run smoothly during the move and over-the-counter collection services continued from all Babcock branches as usual.

"Our customers will benefit from the improved synchronicity of our services as we create a constant supply chain and improve communication between our centralised parts distribution centre and our branches," adds Barnard.

He says that the flow of stock will also improve, as imported parts will arrive at a single entry point for all of Babcock's business units and can be dispatched to branches in bulk orders. Other advantages of the centralised parts distribution model include:

- A reduction of layers and complexity within the supply chain process resulting in more accountability and agility
- Improved support and empowerment of staff across all Babcock businesses and dealership branches
- Standardisation of existing processes which will provide more consistency across the businesses
- The ability to deliver benchmark services to customers as well as internal and external stakeholders.

Roos says the national parts distribution centre also supports Babcock Africa's contribution to the business's worldwide ESG (environmental, social and governance) strategy which views sustainability as an integral part of how Babcock operates. Some of the ways this will be achieved include reducing energy consumption through consolidating various warehouse sites into one, and efficiently managing the impact of Babcock Africa's operations and those of its supply chain by streamlining the distribution of components. Ethical governance also comes to the fore through full transparency of the total Babcock supply chain. Babcock's new streamlined process of distribution is controlled by a single management structure and is overseen by the business's finance division.

Finance Director at Babcock's equipment business unit, Tim Ward, says a strong, competent team is managing the new central distribution centre with the goal of creating high levels of sustainability and efficiency within the business. "The centralised parts distribution process facilitates the importing, storing and distributing of Babcock Africa's full supply chain, bringing the business together as one Babcock, and provides optimal efficiency, increased productivity and swift customer service," concludes Ward.



BEST IN CLASS EXCAVATORS BOOST PRODUCTIVITY IN TOUGH CONDITIONS

Doosan DX520LCA-K crawler excavators, that were launched locally three years ago, have earned a reputation for dependable operation in tough conditions.

Added to this, feedback from the market indicates that users are impressed with this machine's impressive engine power of 223 kW @ 2,000 rpm and the bucket capacity of between 1.8 - 3.28 m³.

Doosan DX520LCA-K crawler excavators cope efficiently in tough applications, including construction, pipe laying, mining and quarrying, mass excavation and general contracting.

The DX520LCA-K crawler excavator series, with an operational weight 52,200 kg, has been developed with advanced features for higher productivity, greater stability on site and lower operational costs, than previous machines.

"New design features comprise a high lifting capacity, which is made possible by the heaviest counterweight in its class and the large, sturdy undercarriage and counterweight, that enhance stability of the machine. This robust construction allows the operator to safely perform tough and heavy workloads, even in challenging conditions," explains Darrel Holton, managing director, DISA Equipment (Pty) Limited, trading as Doosan, part of the Capital Equipment Group (CEG) of Invicta Holdings Limited. "The DX520LCA-K has the widest standard variable undercarriage available – 3,90 m extended and 3,34 m retracted. This heavy-duty X-shaped undercarriage has an integrated track spring and idler, as well as a durable box section track frame and self-lubricating sealed links. All welded structures are designed to limit stresses. The hydraulic track adjuster has a shock absorbing tension mechanism.

"Other new features include a high-performance mechanical injection engine for fuel efficiency and advanced technology for optimum power management and easy maintenance. These robust excavators also boast greater traction and bucket digging forces and increased swing torque that ensure improved performance and faster cycle times to boost productivity."

DX520LCA-K excavators are powered by an environmentally friendly DX12 mechanical engine, which encompasses Doosan's continuously evolving engine technology. Various system improvements ensure greater maximum engine output, thereby reducing the engine's workload during machine operation. Doosan has also improved the engine's components to eliminate the possibility of failure in the field. The improved design and materials of key components, including the engine block, cylinder head and piston, have significantly extended service life of the engine. A large fan size - with improved air, hydraulic oil and fuel filter efficiency - enhances cooling performance, thus reducing fuel consumption. The e-EPOS system (Electronic Power Optimising System) ensures economy and smoothness of operation, by providing a synchronised communication link between the engine's electronic control unit and the hydraulic system, to ensure power is delivered exactly as required. Advantages of the user-friendly e-POS system include ease of operation, availability of power through three selectable user modes for optimum efficiency under all conditions. The standard Auto Idle function automatically puts the engine and pump into the 'standby' mode when it detects a pause during operation. This function helps reduce fuel consumption by lowering idling RPM. Regulation and precise control of the flow rate required by the equipment is standard and a self-diagnosis function enables technical problems to be resolved quickly. Machine settings and maintenance data are clearly displayed on a new user-friendly LCD colour monitor.

These machines have an advanced hydraulic circuit design which separates the oil flows for the travel and boom function to ensure precise and safe operation when handling loads during travel. Circuits for the boom, arm and bucket are optimised for smooth control during combination work. The H-class bucket, which is manufactured from high-strength steel, is offered as a standard feature and has been upgraded with the addition of a side cutter and chamfer, as well as an inner plate.

New design features incorporate the latest ergonomics for improved safety and greater comfort, ensuring operators work in conditions conducive to high productivity. A spacious, all-weather sound-suppressed cab offers a clear view of the site and effective air conditioning and an adjustable seat, with an optional air suspension system to reduce vibrations, enhances comfort. The control panel is conveniently positioned for easy use and is simple to read. For improved safety, there are large handrails and a wide step with anti-slip plates, right and left rear view mirrors, a travel alarm and safety glass.

The DX520LCA-K series has been designed for easy access to all components for quick maintenance procedures and to prevent contamination to the surrounding environment. Doosan construction equipment - which encompasses track, wheel and mini excavators, articulated dump trucks (ADT's), as well as wheel loaders and various attachments – has been designed to cope efficiently and safely in Africa's harsh operating conditions. Doosan offers a technical advisory, repair, maintenance and spare parts service, through a national network of branches and carefully selected distributors.

For further information Darrel Holton, Managing Director, DISA Equipment (Pty) Ltd T/A Doosan
Email: darrelh@doosan.co.za | Web: www.doosan.co.za | Tel: +27 11 974 2095

HPE AFRICA'S HYUNDAI HX300SL AND HX220S CRAWLER EXCAVATORS FOR HIGH POWER, FUEL EFFICIENT FAST CYCLE SPEEDS AND PRECISION CONTROL

HPE Africa's new Hyundai HX series crawler excavators have been developed with a robust structure for high power, fuel efficient fast cycle speeds and precision control. Typical applications include construction, digging trenches, holes or foundations, road works, materials handling and laying pipes, as well as moving earth, demolition, or dredging. "The value of the new HX series lies in its durability and high productivity. We are impressed with the robust and safe structural design of these machines, which enables efficient operation in tough African conditions," says Ross Collard, Managing Director, HPE Africa, part of the Capital Equipment Group (CEG) of Invicta Holdings Limited.

These robust machines, which have been subjected to rigorous onsite testing, prove the reinforced durability of the upper and lower frame structure and attachments ensure dependable external shock and heavy work-loads.

The wear resistance of the bucket has been improved through the use of new materials and vibration reduction of buckets enables more stable operation.

Hyundai HX300SL and HX220S excavators are available locally from HPE Africa. HX300SL units, with Tier 2 / Stage V engines and an operating weight of 30 200 kg, have gross power ratings of up to 186 kW at 2 200 rpm. HX220S excavators have gross power ratings up to 110 kW at 2000rpm, an operating weight of 21 260 kg and a 1.2m³ bucket capacity.

"The three-stage power mode of these machines ensures the highest performance in any operating environment."

The HX series is equipped with eco-friendly, high-performance engines that meet Tier 4 emission requirements. The new Eco Gauge level and colour displays indicate engine torque and fuel efficiency levels and advise of the status of fuel consumption. In addition, the average rates and hourly and daily based fuel consumption can be viewed in the detailed menu. These new excavators have an advanced cooling system with a three-layer stacked-up module that improves air inflow and provides excellent cooling performance by increasing heat dissipation. Through the Intelligent Power Controls (IPC) feature, the operator can easily select the correct mode on the monitor, to provide suitable power for each work environment. For example, on the excavation mode, pump flow is easily controlled by a lever, reducing fuel consumption.

The HX series also has an Attachment Flow Control (AFC) feature, designed to improve pump flow rate through the independent control of two pumps. This feature optimises attachments for the effective flow rate setting, depending on the attachment - there are 10 breaker types and 10 crusher types - to enable high performance in various operations, matching specific site environments.

Other enhanced features include the re-designed instrument panel, where electronic functions are concentrated to facilitate work efficiency and a full view front window and large rear and side windows provide excellent visibility in all directions. A state-of-the-art video camera system secures field of vision for operators in all directions, thereby preventing accidents onsite. An Intelligent Moving Object Detection (IMOD) system, with a recognition distance of 5 m, informs the operator when people or dangerous objects are detected within the range of operation. A swing lock system improves operating speed and productivity and maintains stability when swing movement needs to be limited. A fine swing control option is also available when a fine swing is required. The newly designed coil spring and damper inside the cab's suspension mount reduce vibration and noise levels, improve durability and provide a comfortable space that lessens operator fatigue. The HX series design allows for improved lubricity of connecting parts between the equipment and attachments. Wear-resistant long-life pins, bushes and polymer shims support high performance and durability. A wear-resistant cover plate is installed at the end of the arm to minimise abrasion on the connector between the arm and the bucket. High-pressure hoses, with improved heat and pressure resistance and an enlarged air inlet with a fine net grill cover, prevents penetration of foreign materials, to ensure greater durability of the equipment.

Easy access to vital components gives an unrestricted view of components and allows easy maintenance and repair.

HPE Africa's range includes Hyundai wheel loaders, tracked and wheeled excavators, backhoe loaders, skid steer loaders and motor graders. The company also supplies and supports Soosan hydraulic breakers and quick couplers, which are complimentary attachments to Hyundai construction equipment. All machines are supported by HPE Africa's technical and after-sales teams throughout southern Africa.

**For further information Ross Collard Managing Director HPE Africa, Capital Equipment Group (CEG),
Invicta Holdings Limited
Email: Ross.Collard@hpeafrica.co.za | Telephone: (011) 397 4670 | Web: www.hpeafrica.com**



HPE Africa's new Hyundai HX series crawler excavators have been developed with a robust structure for high power, fuel efficient fast cycle speeds and precision control. Typical applications include construction, digging trenches, holes or foundations, road works, materials handling and laying pipes, as well as moving earth, demolition, or dredging.



TURNKEY SOLUTIONS FOR THE VALUATION AND DISPOSAL OF REPOSSESSED MINING, CONSTRUCTION EQUIPMENT

MHS Plant & Equipment has an extensive international network covering Africa, Australia and the Americas

Specialising in the import and export of mining and construction equipment, MHS Plant & Equipment of Midrand, Johannesburg, has an extensive international network covering Africa, Australia and the Americas. "We have 20 years' experience in servicing international clients, from mining houses to contractors and civil contractors," comments owner and founder Conrad Smith. Apart from supplying both new and quality used equipment, the company also assist banks in both the valuation and disposal of any repossessed equipment, specialising in turnkey solutions for construction companies and mine closures. Explaining how such a typical process works, Smith says MHS is initially approached by a seller like a mine, whereupon it pays a visit to the client's site in order to best understand its specific requirements. Here the client has the choice of opting for a physical inspection or a desktop valuation. An important first step is to request full information for each asset to be disposed of, including a component and maintenance history and the number of hours worked. The site visit involves physical inspection of the assets themselves, including verification that the full inventory is accounted for. Here meetings will be held with workshop managers, for example.

In order to determine a fair market-related value for every asset, the following important factors have to be taken into account: The supply and demand factor (the quantity of similar equipment available on the global market, which influences the value) and the actual replacement cost of the asset (the dollar-based value).

Another important factor is the build specification of the asset (different regions of the world have different requirements, with Africa, South America and Asia having lower-specified equipment. This includes the type of engine, which is important in terms of fuel quality and emissions control regulations. There is EPA certification in the US and CE certification in Europe.

This is critical in determining in which areas or regions the equipment can be sold, and can often result in a higher value of the asset). MHS will research the current used asset availability worldwide in order to check the overall values. The final factor that influences these values is, of course, the location. "We then take into consideration the cost of dismantling the asset and transporting it to the nearest port," says Smith.

"Once we have the above information, we give our clients a market-related value for their approval. After this we then approach our extensive international client base to offer the said equipment. We also have the option of marketing the specific equipment to the specific region that we know where that particular asset is popular and in demand," concludes Smith.

MHS Plant & Equipment Contact: Conrad Smith
Phone: +27 10 500 6193 | Email: info@mhsequipment.co.za | Web: www.mhsequipment.com





earthbroker

your sourcing solution for new & used equipment & machinery

- Why deal with different people each month when you can deal with the same friendly people you always deal with.
- We are proudly South African. Support your country who understand your needs.
- WE are ABC Accredited - this means we do print the amount we say we print. No pie in the sky number. We send direct to the correct people in the industry.
- We have our PAMMS certificate...This means our database has been checked and validated.
- Your advert receives FREE online exposure on our website with our online magazine and the link to the magazine is on our App, Facebook, Instagram and LinkedIn.
- We design FREE of charge and all changes are done FREE of charge.
- NO contracts to be signed.
(Just a full calender months notice is required for cancellation)



Audit Bureau of Circulations
of South Africa



**We have an
online magazine
in which your
advert is
advertised free
of charge**

We offer excellent service and design.

**Should you have people/companies you would like
added to our database , we will happily do
that should they not already be on our database.**

Please call us for a prompt response and great service!

For further info on how to get your company listed in the Earthbroker please call...**Janine - 083 456 4027**



2 X HITACHI ZX330LC-5G HYDRAULIC EXCAVATORS

Year Model: 2017
Hours (SMR): 9090 & 15 139

Contact Person:
Neil Britz: +27 66 197 0178



2 X CAT 140H MOTOR GRADERS WITH RIPPERS

DUNCAN - Cell: 083 626 5588
ANTON - Cell: 082 923 5397
JAAP - Cell: 082 892 1327
LORAINÉ - Cell: 076 021 4344



1X 2012 CAT 140K MOTOR GRADER

S/no: SZL01366 / SMR: 10925 hours.
Fully enclosed air-conditioned cab.
1 Owner, FSH.
Power Train Guarantee.
Price: R 1 850 000.00 + VAT.

Shawn Michell
082 568 4033
shawn@plantfinder.co.za



VARIOUS CEMENT SILOS

IN VERY GOOD
CONDITION
50,60,80 & 100 TONS

TIM MARSAY +27 83 654 4248
PATRICK MARSAY +27 79 187 7937
tim@marsayequip.co.za
www.marsay.co.za



2 X 202 NEW / UNUSED CAT 323D3 EXCAVATOR'S

DUNCAN - Cell: 083 626 5588
ANTON - Cell: 082 923 5397
JAAP - Cell: 082 892 1327
LORAINÉ - Cell: 076 021 4344



VOLVO L30

R200 000,00 + VAT

Dewald Hattingh: +27(0) 72 547
2198 +27(0) 11 973 3737
info@atlasmasjiene.co.za



CAT 428E

R520 000,00 + VAT

Dewald Hattingh: +27(0) 72 547
2198 +27(0) 11 973 3737
info@atlasmasjiene.co.za



CAT 773E DUMP-TRUCK

2003 model
low hours
Call for Price

THOMAS MITTAG
072 545 6223
info@mae-equipment.com
www.mae-equipment.com



CATERPILLAR 769

R750 000,00 + VAT

Dewald Hattingh: +27(0) 72 547
2198 +27(0) 11 973 3737
info@atlasmasjiene.co.za



1 X 2013 CAT 950H F.E.L

DUNCAN - Cell: 083 626 5588
ANTON - Cell: 082 923 5397
JAAP - Cell: 082 892 1327
LORAINÉ - Cell: 076 021 4344

For further info on how to get your company listed in the Earthbroker please call...**Janine - 083 456 4027**

For further info on how to get your company listed in the Earthbroker please call...Janine - 083 456 4027



CATERPILLAR 277B

R350 000,00 + VAT

Dewald Hattingh: +27(0) 72 547
2198 +27(0) 11 973 3737
info@atlasmasjiene.co.za



KOMATSU D375A-6

2011 model refurbished &
new undercarriage
Call for Details

THOMAS MITTAG
072 545 6223
info@mae-equipment.com
www.mae-equipment.com



CATERPILLAR 140G'S

FROM
R950 000,00 + VAT

Dewald Hattingh: +27(0) 72 547
2198 +27(0) 11 973 3737
info@atlasmasjiene.co.za



MERC 2628 ATEGO 14000 LITRE TANKER

Contact Stuart Mckenzie
Tel: 033 212 2181
Cell: 082 558 7901
Email: sjm@mckenzieplant.co.za



**1X 2004 DAEWOO
(DOOSAN)
MEGA 300-V
FRONT END LOADER**
Serial no: 2025 / SMR: 9678 hours
Fully enclosed air-conditioned cab.
Power Train Guarantee.
Price: R 700 000.00 + VAT.

Shawn Michell
082 568 4033
shawn@plantfinder.co.za



KOMATSU PC350LC-8

Contact Stuart Mckenzie
Tel: 033 212 2181
Cell: 082 558 7901
Email: sjm@mckenzieplant.co.za



STRIPPING HITACHI 870/3

Good Runner stripping for
spares. Parts still in excellent
condition.

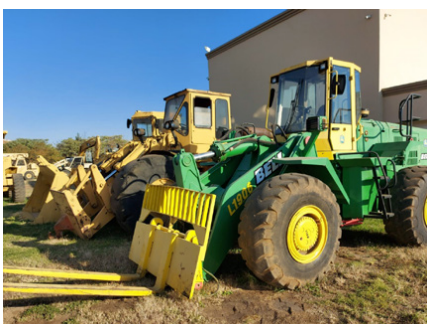
Rodney
0731039582
rodney@marodew.co.za



CATERPILLAR 330D

R1 500 000,00 + VAT

Dewald Hattingh: +27(0) 72 547
2198 +27(0) 11 973 3737
info@atlasmasjiene.co.za



BELL 1906 WITH FORKS

R320 000,00 + VAT

Dewald Hattingh: +27(0) 72 547
2198 +27(0) 11 973 3737
info@atlasmasjiene.co.za



**3 X 2011,2013,2016
HAMM 3520
SMOOTH DRUM
ROLLERS
1 X 2009 BOMAG
BW219D-4 SDVR**

DUNCAN - Cell: 083 626 5588
ANTON - Cell: 082 923 5397
JAAP - Cell: 082 892 1327
LORAIN - Cell: 076 021 4344

For further info on how to get your company listed in the Earthbroker please call...Janine - 083 456 4027

For further info on how to get your company listed in the Earthbroker please call...**Janine - 083 456 4027**



CAT D400D

R550 000,00 + VAT

Dewald Hattingh: +27(0) 72 547
2198 +27(0) 11 973 3737
info@atlasmasjiene.co.za



1 X HITACHI ZX400LC-5G HYDRAULIC EXCAVATOR

Year Model: 2016
Hours (SMR): 14 880

Contact Person:
Neil Britz: +27 66 197 0178



ATLAS-COPCO D65 SMARTROC

2015 model
refurbished
Call for Price

THOMAS MITTAG
072 545 6223
info@mae-equipment.com
www.mae-equipment.com



CATERPILLAR 140H

R1 500 000,00 + VAT

Dewald Hattingh: +27(0) 72 547
2198 +27(0) 11 973 3737
info@atlasmasjiene.co.za



1 X MERCEDES BENZ ATEGO 1517 8000L DIESEL BOWSER

Year Model: 2000
KM Reading: 48232

Karen van Zyl - 011 964 1179
info@bulkmachine.co.za



1X 2006 CAT D6R III TRACKED DOZER

S/no: TBC00156 / SMR: 8000 hours
Fully enclosed ROPS Cab,
Tilt Blade & Ripper.

Price: R 1 325 000.00 + VAT.

Shawn Michell
082 568 4033
shawn@plantfinder.co.za



CAT 773F WATER BOWSER

2008 model
option to Dump-Truck
Call for Price

THOMAS MITTAG
072 545 6223
info@mae-equipment.com
www.mae-equipment.com



4 X 2021 NEW / UNUSED CASE 851EX 4X4 MAGNUM TLB'S 1 X 2017 CASE 570T 4X4 TLB

DUNCAN - Cell: 083 626 5588
ANTON - Cell: 082 923 5397
JAAP - Cell: 082 892 1327
LORAIN - Cell: 076 021 4344



ATLAS-COPCO D65 SMARTROC

2017 model
refurbished
Call for Price

THOMAS MITTAG
072 545 6223
info@mae-equipment.com
www.mae-equipment.com



BELL B20C

Mechanically good condition.
Very well priced.
R145 000

Rodney
0731039582
rodney@marodew.co.za

For further info on how to get your company listed in the Earthbroker please call...**Janine - 083 456 4027**

For further info on how to get your company listed in the Earthbroker please call...Janine - 083 456 4027



ATLAS-COPCO DM30-MK2

2018 model
ready for production
Call for Price

THOMAS MITTAG
072 545 6223
info@mae-equipment.com
www.mae-equipment.com



CATERPILLAR 16H

R2 500 000,00 + VAT

Dewald Hattingh: +27(0) 72 547
2198 +27(0) 11 973 3737
info@atlasmasjiene.co.za



1 X BELL 850J DOZER

Year Model: 2018
Hours (SMR): 6112

Karen van Zyl - 011 964 1179
info@bulkmachine.co.za



1 X HITACHI ZX470LC-5G HYDRAULIC EXCAVATOR

YEAR MODEL: 2013
HOURS (SMR): 13563

Karen van Zyl - 011 964 1179
info@bulkmachine.co.za



NEW KAROO MOBILE DRY BATCHING PLANT

TIM MARSAY +27 83 654 4248
PATRICK MARSAY +27 79 187 7937
tim@marsayequip.co.za
www.marsay.co.za



1 X KOMATSU D275-5A DOZER

DUNCAN - Cell: 083 626 5588
ANTON - Cell: 082 923 5397
JAAP - Cell: 082 892 1327
LORAINÉ - Cell: 076 021 4344



KOMATSU D375A-5

2008 model / "as is"
or refurbished 2 units available
Call for Price

THOMAS MITTAG
072 545 6223
info@mae-equipment.com
www.mae-equipment.com



SUB ASSEMBLIES

C4.4 LONGBLOCK
3116 LONGBLOCK
C11 LONGBLOCK
D8R LONGBLOCK
C15 SHORT SUB

WhatsApp Message
+27 (0)82 405 3494
sales@ipsglobal.net



BELL B20D 18000 LITRE WATERTANKER

R850 000,00 + VAT

Contact Stuart Mckenzie
Tel: 033 212 2181
Cell: 082 558 7901
Email: sjm@mckenzieplant.co.za

For more info on advertising your
machine or spares in the classifieds
please call Janine on 083 456 4027
janine@earthbroker.co.za

For further info on how to get your company listed in the Earthbroker please call...Janine - 083 456 4027

Agriculture / Forestry

Bell Equipment
Filter Centre
LNE Agri-Earth
Manitou South Africa

Attachments

CTC Plant Company (PTY) Ltd
Plant Finder
Rhino Excavator Hammers

Buckets

INMINE - Inala mining services
Industrial Plant Solutions
Paramount Equipment
Rocktech
STM Mining
Wearpact

Crushing

Kemach McCloskey
Marsay Equipment

Dyno Testing

Earthmoving Specialist
Mzantsi Transmissions
Power Transmission Technology

Exhausts

Rustpet Exhausts

Engineering

All Africa Supplies
C & J Earthmoving Repairs
Earthmoving Specialist
Earthmach
East Coast Gears
Gears for Africa
New Beginning Designs
P&R Earthmoving

Gearbox / Transmissions

East Coast Gears
Mzantsi Transmissions
P&R Earthmoving
Power Transmission Technology
Sintech
Vortex Transmissions

Gears

East Coast Gears
Gears for Africa

G.E.T / Undercarriage

Blumaq
Centrax
ESP
ITR Africa
Industrial Plant Solutions
Mid Plant Services
P&R Earthmoving
Paramount Equipment
Rocktech
Spec-Cast Wear Parts
STM Mining
Tractor Grader Spares
Wearpact

Hydraulics

Industrial Plant Solutions
Mid Plant Services
P&R Earthmoving
Power Transmission Technology
One Stop Procurement

Lifting Equipment

Liugong

Lubricants & Oils

Bell Equipment
Earthmach
Filter Centre

Machine Hire

AmPlant
BLC Plant Company
Bulk Machine Hire
Rhino Excavator Hammers

New Machines

Bell Equipment
Earthmach
Liugong
Manitou South Africa
Kemach McCloskey

New Parts

Bell Equipment
Blumaq
C & J Earthmoving Repairs
CTC Plant Company
Centrax
East Coast Gears
ESP

Should you want to receive a free copy of our magazine please email your details to janine@earthbroker.co.za

New Parts

Filter Centre
ITR Africa
Industrial Plant Solutions
LNE Agri-Earth
Manitou South Africa
Kemach McCloskey
Mid Plant Services
One Stop Procurement
Prime Plant
P&R Earthmoving
Paramount Equipment
Rhino Excavator Hammers
Rustpet Exhausts
Shin-Li Trading
Spec-Cast Wear Parts
STM Mining
Shin-Li Trading
Sintech
Tractor Grader Spares
Wearpact
WEICHI SEM Parts

Pumps

All Africa Supplies
Blumaq
C & J Earthmoving Repairs
Industrial Plant Solutions
Mid Plant Services
Shin-Li Trading

Seats / Upholstery

The Seat Connection

Services

Bell Equipment
C & J Earthmoving Repairs
CTC Plant Company
Dura Sales
Earthmach
Gears for Africa
INMINE - Inala mining services
ITR Africa
LNE Agri-Earth
Power Transmission Technology
Prime Plant
Marsay Equipment
Mid Plant Services
RC Investments
Vortex Transmissions

Turbos

Industrial Plant Solutions
Turboworks
Turbo Direct

Torque Convertors

ITR Africa
Industrial Plant Solutions
One Stop Procurement
Sintech

Tyres

Associated Equipment / Vendel Civils
Safety Grip

Used Machines

Atlas Masjiene
All Africa Supplies
AmPlant
Associated Equipment / Vendel Civils
BLC Plant Company
Bulk Machine hire
CTC Plant Company
Dozer
Dura Equipment Sales
Earthmach
Earthmoving Machine Sales
INMINE - Inala mining services
Mae Equipment
Manitou South Africa
Marsay Equipment
McKenzie Plant Sales
Mid Plant Services
P&R Earthmoving
Paramount Equipment
Phemba Equipment
Plant Finder
STM Mining Equipment
Transand
WEICHI SEM Parts

Used Parts

All Africa Supplies
Bell Equipment
BLC Plant Company
Bulk Machine Hire
C & J Earthmoving Repairs
Dozer
Dura Parts
East Coast Gears
Earthmoving Machine Sales
Earthmoving Specialist
ITR Africa
INMINE - Inala mining services
Industrial Plant Solutions
Mid Plant Services
P&R Earthmoving
Paramount Equipment
Phemba Equipment
Prime Plant
RC Investments
STM Mining Equipment
Shin-Li Trading
Turboworks
WEICHI SEM Parts

Should you want to receive a free copy of our magazine please email your details to janine@earthbroker.co.za

earthbroker

your sourcing solution for new & used equipment & machinery

The Earthbroker is published monthly and 5400 copies are sent to all the mines, quarries, and all companies dealing with earthmoving and construction in South Africa, Africa and some overseas countries.

We are **ABC accredited** and have our **Pamms certificate No: 2A8DD9F60574FFC2A4EEEE01A**.

We also have a website where anyone can view the magazine, which is updated monthly with the latest changes and advertisements. Please view our E-Mag on www.earthbroker.co.za

Our E-magazine is uploaded monthly to Facebook, Instagram, Linkedin and our mobile App.

We accept about 5 editorials a month which we insert free of charge. Should you have an editorial which is relevant to the industry, we will gladly give it consideration.

For details of our prices on a full page, half page or quarter page, please phone me on 083 456 4027 or e-mail me at janine@earthbroker.co.za.

We do not ask anyone to sign a contract, however we do insist on a **full calendar month's notice** for cancellation.

Please note that all quotations exclude VAT. We do insertions, (own printing costs) at R1.50 each excluding VAT.

Classifieds at R500.00 excluding VAT for a business card size advertisement only.

Janine Sargeant
(CELL)083 456 4027
janine@earthbroker.co.za

**Should you want to receive a free copy of our magazine
please email your details to janine@earthbroker.co.za**

Conditions of Acceptance for advertising

Adverts are subject to the following conditions:

1. Often we receive faxes with illegible letters or numbers. We accept no responsibility due to this.
2. We accept NO responsibility for errors in advertisements received telephonically.
3. We reserve the right to refuse placement or to place the advertisement/s as we see fit.
4. No responsibility will be taken for omission of advertisements, for any errors/colour-differences in advertisements or any results due to such errors.
5. We accept no responsibility for the quality of goods advertised. We merely bring buyers and sellers into contact with each other and we are not responsible for any results due to transactions made through the advertisements.
6. Please note one full calendar months written notice for cancellations.
7. Payment due prior to publication or interest will be charged.
8. There will be an annual increase of 10% at the beginning of each year.
9. The Earthbroker will not be held responsible for content of any advert inserted in our magazine.

COMPANY	BRANCH	DESIGNATION	CONTACT	TEL NO	CELL	EMAIL
Andru Mining	JHB	Sales	Naren Birdju	(011)395 0200 / +27 82 859 0766		plantsales@andru.co.za
Atlas Masjiene	JHB		Dewald Hattingh	+27(0) 72 547 2198 +27(0) 11 973 3737		info@atlasmasjiene.co.za
Atlas Service Centre	JHB		Fourie Von Tonder		083 301 1632	
Action Equipment Co	JHB	Sales	Yolanda	011 452 1298		yolanda@action.co.za
Africaplant.com	Newcastle	Sales	Mark	034 318 3032	082 301 3961	admin@aficaplant.com
Afritool – Rent	JHB		Karen Abrams	011 974 2819	082 523 9777	karen.abrams@fluor.com
Alf's Tippers JHB	Sales		Alf Ferreira	011 824 0013	083 260 6929	alfplant@global.co.za
All Africa Supplies	JHB		Jody Da Silva	011 918 9976		sales@allafricasupplies.net
Amplant	Polokwane		Eddie Simpson	015 293 1221	082 904 7694	simpsons@amplant.co.za
Anric Enterprises	JHB		Ric de Nysschen	011 740 0975	082 647 9955	anric@cybertrade.co.za
Aquajet Profiles (Pty)Ltd	JHB	Director & Sales	Brad	011 908 5550	073 470 4958	info@aquajetprofiles.co.za
Arch Equipment	JHB		Greg Archibald		082 803 4227	archhire@mweb.co.za
Associated Equipment Co	JHB	Sales	Jaap	011 801 4911/2	082 892 1327	associated1@xnet.co.za
AVANT SA CPT			Wally	021 851 0722	076 688 3399	info@avantsa.co.za
Azrel Equipment	JHB	Sales	Mike Imrie	(010)590 8048	083 230 3118	mike@azrelequipment.com
B&B Plant / Unicrane	Empangeni		Bob Fogg	035 787 0679	082 570 5781	sales@bbplant.co.za
Barloworld Equipment Co				011 929 0000		
Barloworld Equipment Co	Durban	Parts	Brett Woodhouse	031 705 8500	071 484 1035	bwoodhouse@barloworld-equipment.com
Barloworld Equipment Co	Durban	Parts	R. Haripersadh	031 705 8500		rharipersadh@barloworld-equipment.com
Barloworld Equipment Co	Newcastle	Parts	Milan Pather	034 315 2847	073 971 2046	mpather@barloworld-equipment.com
Barloworld Equipment Co	Newcastle	Sales	Brendan Moore	034 315 2847	073 781 8865	
Barloworld Equipment Co	Richardsbay	CRS	Rolfe Botes	035 797 6300	082 904 9619	jhumphries@bw-eq.com
Barloworld Equipment Co	Bloemfontein	Sales	Quentin Coetzee	051 4091200	078 460 2622	qcoetzee@barloworld-equipment.com
Bell Equipment	Richards Bay	Parts	Jackie Smith	035 907 9111	082 550 8791	bellparts@bell.co.za
Bell Equipment		Sales	Andrew Pretorius	011 928 9700	071 607 3978	partssales@bell.co.za
Bell Equipment	JHB	Used Parts	Fazel Patel	011 928 9700		usedparts@bell.co.za
Bell Equipment	JHB	Machine Sales	Myburgh	011 928 9700		sales@bell.co.za
Bert's Bricks (Pty)Ltd	Potchefstroom	Sales	Lizelle	(018)292 1615		marketing@bertsbricks.co.za
BKB Van Wyk	JHB			017 712 2132		vanwykinfo@telkomsa.net
Blumaq	JHB		John Beukes	011 966 5092		john.beukes@blumaq.com
BLC Plant Company	JHB	Machine Sales	Luigi Stravino	011 555 2000	082 552 7017	luigistravino@blcplant.com
BLC Plant Company	JHB	Machine Sales	Paolo Stravino	011 555 2000	082 852 3721	paolotravino@blcplant.com
BLC Plant Company	JHB	Machine Sales	Andrew McCall	011 555 2000	082 256 0334	andrewmccall@blcplant.com
BLC Parts	JHB	Parts Sales	Robbie Stocks	011 555 2000	082 492 9263	
BLC Parts	JHB	Sales	Mike du Plessis	011 555 2000	082 508 2908	mikeduplessis@blcplant.com
BLC Parts	JHB	Sales	Michael Marriott	011 555 2000	082 905 8983	michaelmarriott@blcplant.com
BMH Trading International	Cape Town		Bradley	021 903 2667	082 780 0084	bradley@bmhtradinginternational.com
Bom-mach / Stampede	JHB	Sales	Jabu	011 394 5704		info@stampede.co.za
Bruforce	JHB		Craig	011 393 1298	083 627 2533	bruforce@lantic.co.za
Bulk Machine Hire	Bapsfontein	Sales	Neil Britz	066 197 0178		karen@bulkmachine.co.za
Burgers Equipment & Spares			Anka Burger	011 979 3636		admin.za@burgersafrica.com
C & J Earthmoving Repairs	JHB			011 025 9336	079 888 6071	mikecearth@gmail.com
Caldas Engineering & Manufacturing	JHB	Marketing	Melanie	011 453 7797		info@caldas.co.za
Capital Equipment Parts	JHB		Mark	011 568 4215		info@capiparts.co.za
Catech Engineering	JHB		Lee Bray	071 687 9274		lee@cattam.co.za
Centrax	JHB	Sales	Trevor	011 392 5055	083 608 5550	trevor@centraxsa.co.za
Centrax	JHB	Sales	Renier Olivier	086 123 6872	083 321 8106	renier@centraxsa.co.za
Centrax	DBN	Sales	Steve	086 123 6872	083 613 0664	steve@centraxsa.co.za
Cranes Direct	Boksburg	Parts Sales	John Thage	011 894 8056	083 254 4068	john@cranesdirect.co.za
Cranes Direct	Boksburg	Sales	Mark Le Roy	011 894 8056	083 233 2140	mark@cranesdirect.co.za
CTC Plant Company	Cape Town	Owner	Colin McOwen	021 386 4190	082 440 4806	colin@ctcplant.co.za
CTC Plant Company	Cape Town	Sales	Evert Jooste	021 386 4190	082 825 8865	evert@ctcplant.co.za
CTC Plant Company	Cape Town	Sales	Peter Groenewald	021 386 4190	072 368 5581	peterg@ctcplant.co.za
CTC Plant Company	Cape Town	Sales	Mark Walker	021 386 4190	082 441 2446	markw@ctcplant.co.za
CTC Plant Company	Cape Town	Sales	Robert Freeman	021 386 4190	079 500 3940	robert@ctcplant.co.za
CTC Plant Company	Cape Town	Parts	Mark Swanepoel	021 386 4190	082 825 6966	marks@ctcplant.co.za
CTC Plant Company	Cape Town	Parts	Nico Vermeulen	021 386 4190	084 525 6966	nic_v@ctcplant.co.za
CTC Plant Company	Cape Town	Service	Olla van den Heever	021 386 4190	082 467 1894	olla@ctcplant.co.za
CTC Plant Company	Cape Town	Transport	Ian Geyser	021 386 4190	082 440 5861	ian@ctcplant.co.za
CTC Plant Company	Cape Town	Transport	Shaun Haman	021 386 4190	082 495 2640	shaun@ctcplant.co.za
DBZ Diesel Parts	JHB			087 751 4555	074 106 2158	jhb@dbzdiesel.com
DBZ Diesel Parts	Cape Town		Jason Martincich	021 556 6502	082 353 5971	jason@dbzdiesel.com
DBZ Diesel Parts	Durban			031 564 8091/2	082 565 8446	durban@dbzdiesel.com
D- MAN SALES	JHB	Sales	Wessels		072 172 7718	wessels@lpss.co.za
Deutz Diesel Engines	Meadowdale		Johan Reiners	(011)974 3549	082 457 1542	miere@icon.co.za
Deutz Diesel Power	Durban	Branch manager	Nivern Pather	031 700 2384	082 375 4912	nivern@deutz.co.za
Deutz Diesel Power	JHB		Nathan Kitchen	011 923 0600		nathan@deutz.co.za
DGI Trading	JHB		Henk Arnold	010 065 0888	083 233 0019	henk.arnold@dgitrading.co.za
Dirt Diggers	JHB		Vic Viljoen	011 023 6674	082 822 3915	vicv@merchantwest.co.za



**“The man who stops advertising
to save money is like the man
who stops the clock to save time.”
- Thomas Jefferson -**

In difficult economic times one should put more effort into promoting
your business, your services and your products.

Cutting back on your advertising will ensure that your business loses ground
to competitors who know and understand this.

Quick Reference

COMPANY	BRANCH	DESIGNATION	CONTACT	TEL NO	CELL	EMAIL
Dosco Hydraulic Eng. cc	Montague Gardens		David Laubscher	021 551 2283	082 579 6465	david@doscocape.co.za
Dosco Hydraulic Eng. cc	Montague Gardens		Mike Hart	021 551 2283	082 228 5031	
Dozer	JHB		Graeme	011 452 1224		info@dozer.co.za
Dozer	JHB	Specialized Sales	Chris Cronje	011 452 1224	082 491 5472	info@dozer.co.za
Dura Equipment	JHB	Sales	Prinsloo Munro	011 918 4760	071 611 7281	prinsloo@durasales.co.za
Dura Equipment	JHB	Sales	Ernest Human	011 918 4760	079 874 5458	ernest@durasales.co.za
Dura Equipment	JHB	Sales	Jerry van Niekerk	011 918 4760	082 895 5611	durasales.co.za
Dura Equipment	JHB	Sales	Coenie Albertyn	011 918 4760	083 251 8046	coenie@durasales.co.za
Dura Equipment	JHB	Sales	Curtis Brown	011 918 4760	083 258 5784	curtis@durasales.co.za
Dura Equipment	Cape Town	Sales	Pottie Potgieter	021 988 6618	083 600 0729	pottie@durasales.co.za
Dura Equipment	Cape Town	Sales	Gerrie du Randt	021 988 6618	082 950 7040	gerrie@durasales.co.za
Dura Equipment	Cape Town	Sales	Charmaine Lombard	021 988 6618	082 777 1544	charmaine@durasales.co.za
E&A Spares	Durban	Sales	Deva	031 700 5791/2	082 659 5521	easpares@jiafrica.com
Earth Mach	Mpumalanga		Chris	017 843 2072	083 232 8713	chris@earthmach.co.za
Earth Moving Plant & Trans.	Pinetown		Richard	031 705 1770	083 777 0152	richard@ept.co.za
EHD Johannesburg		Sales	Lodewyk van As	011 870 5000		ehd@ehd.co.za
Earthmoving Machine Sales	KZN	Sales	Jason	031 777 1025	083 412 1077	jason@sa-ems.co.za
East Coast Gears	KZN	Sales	Johan	031 701 3500	084 244 3324	eastcoastgears@gmail.com
ELB Equipment				011 306 0700		elb@elbequipment.co.za
Equipment Parts & Engines	Isando	Managing member	Attie vd Bergh	011 571 9000	082 655 9276	info@equipmentparts.co.za
ESP	Isando	Div Manager	Gary Wright	011 398 1700	082 449 6773	garyw@espa.co.za
ESP	Benoni	Div Manager	Adrian Erasmus	011 845 2911	083 449 0519	adriane@espa.co.za
ESP	Pretoria	Reg Manager	Willie v.d Merwe	012 804 6706	082 789 0828	williev@espa.co.za
ESP	Middleburg	Div Manager	Leon Bezuidenhout	013 246 2520	083 778 9877	leonb@espa.co.za
ESP	Pinetown	Reg Manager	Shaun Clarke	031 705 4200	082 413 1103	shaunc@espa.co.za
ESP	Cape Town	Reg Manager	Jaco Bekker	021 945 1030	072 384 4901	jacob@espa.co.za
ESP	Port Elizabeth	Branch Supervisor	Rainier Gerber	041 484 4575	083 698 1805	rainierg@espa.co.za
ESP	Bloemfontein	Reg Manager	Craig Wansbury	051 432 4501	082 413 2708	craigw@espa.co.za
ESP	Kimberley	Branch Supervisor	Kingsley Olyn	053 831 8349	082 805 7558	kingsleyo@espa.co.za
Filter Centre	Pinetown	Manager	Viyen Maharaj	031 700 9074	076 727 3985	info@filtercentre.com
Filvent	Witbank		Bernard	013 656 2726		workshopmanager@filvent.co.za
Fluid Blast Engineering	JHB		George Slabbert		082 550 1385	fluid.blast@live.com
Force 8 CC	Cape Town		Justin Nicoll	021 535 1117	082 373 9802	info@force8.co.za
Full Blast Hydraulics	JHB		Andre Calitz	(011)900 3790		info@fullblasthydraulics.com
Fusion Torque Components	JHB	Director	Eldred Carstens	011 828 9023	083 460 6790	eldredfusion@telkomsa.net
Gears for Africa	JHB	Sales	Carl	011 824 2017		carl@gearsforafrica.co.za
Gears for Africa	CPT	Sales	Carl	021 577 1030		carl@gearsforafrica.co.za
GET Spares	JHB	Sales	Raymond	(011)397 5276	082 655 2301	sales@getspares.co.za
GET Spares	JHB	Sales	Freddy	(011)397 5276	082 604 0045	sales@getspares.co.za
GET Spares	JHB	Sales	Clyde	(011)397 5276	082 581 5152	sales@getspares.co.za
Gillroy	Durban		Rob Gillit	031 765 2745	083 661 2057	info@gillroyplant.co.za
G-Man Trading	JHB	Sales	Luke Jr.	011 672 7011		lukej@gman.co.za
GO Industry - Dove Bid			John Cowing	0861 463 683	083 662 0237	john.cowing@liquidityservices.com
GR Spares	Pinetown	Sales	Gavin	031 705 5463	082 452 8690	grspares@webstorm.co.za
Grindright Engineering	Middelburg		Piet De Vos	013 246 2308	064 849 2320	grindright@gmail.com
HL Du Plooy	Harrismith		Hennie Du Plooy	082 719 8744	082 574 4212	hennie@hlduplooyplant.co.za
Heavy Duty Earthmoving Parts			Jannie Burger	011 394 4125/6/7		jannie@hdep.co.za
HPE Africa	Jet Park	Sales Manager	Lani	011 397 4670		marketing@hpeafrica.co.za
HPE Africa	Durban	Branch Manager	Adam Armitage	031 700 3426		Adam.armitage@hpeafrica.co.za
HPE Africa	East London	Branch Manager	Leon Dreyer	043 732 1428		leon.dreyer@hpeafrica.co.za
HPE Africa	Cape Town	Branch Manager	Gary Pneumaticos	021 905 0581/2		Gary.P@hpeafrica.co.za
Industrial Engine Parts	JHB	Sales	Morne	011 868 5436	082 851 7514	sales@ieppower.co.za
Industrial Plant Solutions	Natal		David Botha		083 405 3494	sales@ipsglobal.net
Inmine Inala Mining Services	Witbank		Clement Van Der Merwe		082 414 1393	sales@inmine.co.za
ITR Africa	Johannesburg	Sales Mgr - Nat	Carel Zwiegelaaar	011 614 0070	076 874 7296	carel.zwiegelaaar@itrafrica.com
ITR Africa	Johannesburg	Sales Mgr - U/C	Sean Smit	011 614 0070	072 271 6069	sean.smit@itrafrica.com
ITR Africa	Johannesburg	Sales Mgr - RP	Edwin Luttig	011 614 0070	076 570 0911	edwin.luttig@itrafrica.com
ITR South Africa	Johannesburg	Sales Mgr - Int	Michael Sanderson	011 614 0070	062 311 3376	michael.sanderson@itrafrica.com
ITR South Africa	Middelburg	External Sales	Rudi Le Roux	013 590 5614	083 500 3763	rudi.leroux@itrafrica.com
ITR South Africa	Kathu	External Sales	Mark Ingram	053 723 2245	082 759 2886	mark.ingram@itrafrica.com
ITR South Africa	Cape Town	Area Manager	Roy De Bruyn	021 905 7340	079 107 2112	roy.debruy@itrafrica.com
ITR South Africa	Port Elizabeth	Area Manager	Roche Bester	041 451 2222	082 476 9667	roche.bester@itrafrica.com
ITR South Africa	East London	Area Manager	Shaun Smith	043 748 3541	079 948 2965	shaun.smith@itrafrica.com
ITR South Africa	Pinetown	Area Manager	Quintin Pillay	031 941 1133	079 492 4519	quintin.pillay@itrafrica.com
ITR South Africa	Bloemfontein	Area Manager	Jacques Billing	051 011 5620	082 928 1964	jacques.billing@itrafrica.com
ITR Namibia	Windhoek	Director	Hanjo Schierschmidt	+264 83 331 5160	+264 81 155 5539	hanjo.schierschmidt@itrafrica.com
ITR Zambia	Kitwe	Director	Andre Snyders	+260 96 351 3429	+260 96 351 3429	andre.snyders@itrafrica.com
J&T Earthmoving Maintenance	Kempton Park		Alex Savage		081 895 5583	alex@earthmovingmaintenance.co.za
Jacobs Transport	Vereniging	Sales	Gys Jacobs	010 200 9946	083 544 0275	gys@jacobstransport.co.za
JBS Plant Hire	Klerksdorp		Tonie van den Heever	018 469 1016/7	083 654 7809	jjvdh@lantic.net
Johnson Taylor	JHB	Sales Manager	Graham	011 614 5122		graham@johnsontf.co.za
JW Plant Hire and Sales	Welkom	Sales	Leon	057 355 1119	083 253 6110	j.w.plant@telkomsa.net
Kaltire			Jacques Roux	012 548 9327	083 777 9497	jacques.roux@kaltire.com
Kappa Engineering		Managing Director	Gerrie Visagie	011 828 5506/8	082 575 2199	gerrie@kappaeng.co.za
Kappa Engineering Procurement		Rebuild Director	Nathaniel Hauptfleisch	011 828 5506/8	082 928 6312	nathaniel@kappaeng.co.za
KDH Hydraulics	JHB		Ricus	011 762 9001/2	071 678 3746	ricus@kdhhydraulics.co.za
Kemach JCB	JHB			011 826 6710		sales@kemachjcb.co.za
Kemach JCB	Middelburg			013 244 1839		sales@kemachjcb.co.za
Kemach JCB	Pretoria			012 548 2956		sales@kemachjcb.co.za
Kemach JCB	Bloemfontein			051 432 3978		sales@kemachjcb.co.za
Kemach JCB	Durban			031 700 8278		sales@kemachjcb.co.za
Kemach JCB	Richards Bay			035 751 2718		sales@kemachjcb.co.za
Kemach JCB	CPT			021 949 7442		sales@kemachjcb.co.za

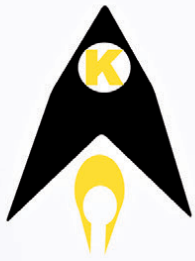
COMPANY	BRANCH	DESIGNATION	CONTACT	TEL NO	CELL	EMAIL
Kemach JCB	Port Elizabeth			041 453 1819		sales@kemachjcb.co.za
Kemach JCB	East London			043 732 1902		sales@kemachjcb.co.za
Kemach JCB	George			044 878 0366		sales@kemachjcb.co.za
Kemach JCB	Mthatha			047 531 1688		sales@kemachjcb.co.za
KHD Electrical			Delville Kuhn	011 392 4444		delville@khdiesel.co.za
Komatsu	Cape Town	Sales	Frederick van Ryneveld	021 951 1251	082 317 2849	info@komatsu.co.za
Komatsu	Bloemfontein	Sales	Ian Banham	051 434 2221/2		ian.banham@komatsu.co.za
Komatsu	Gauteng	Sales	Graeme Armstrong	011 923 1000		Graeme.Armstrong@komatsu.co.za
Komatsu	Gauteng	Sales	Karen van der Walt	011 923 1000		Karen.vanderWalt@komatsu.co.za
Komatsu	Gauteng	Sales	Francois Griesel	011 923 1000		Francois.Griesel@komatsu.co.za
Komatsu	Kimberley	Sales	Jaco Van Heerden	053 832 2061		jaco.vanheerden@komatsu.co.za
Komatsu	Pinetown	Sales	Jacques van der Sandt	031 710 4950	082 888 0995	info@komatsu.co.za
Komatsu	Port Elizabeth	Sales	George Hyman	041 452 6555	082 882 9576	george.hyman@komatsu.co.za
Komatsu	White River	Sales	Fortune Mathiba	013 758 9900	083 675 1756	Fortune.mathiba@komatsu.co.za
Komatsu	Wolmeransstad	Sales	Piet du Toit	018 596 2244	083 271 3567	info@komatsu.co.za
Komax Spares	JHB		Jacques	011 664 8828	082 616 1654	jacques@jsaearth.co.za
Komax Spares	JHB		Gawie	011 664 8828	082 650 0505	
Komax Spares	JHB		Danie	011 664 8828	076 222 2708	
Kruiper Spares	Port Elizabeth	Sales	Gary	041 585 6455	083 321 0819	kruiper@global.co.za
Kruiper Spares	Port Elizabeth	Sales	Bill	041 585 6455	082 569 2740	kruiper@global.co.za
Kruiper Spares	Port Elizabeth	Sales	Philip	041 585 6455	083 235 3919	kruiper@global.co.za
Landboupart	Isando			011 966 9200		info@landboupart.com
Lee's Dozers	JHB		Lee Bray	071 687 9274		leeb@leesdozers.co.za
Leo Hydraulics				011 976 1941		admin1@leohydraulics.co.za
LiuGong Machinery SA	JHB	Parts		011 979 3636		admin.za@burgersafrica.com
LNE Agri Earth (Pty) Ltd	JHB	Sales	Johann	0861 888 008	083 327 3237	LNE@LNE-AgriEarth.com
LNE Agri Earth (Pty) Ltd	JHB	Sales	Juan	0861 888 008	083 327 3237	LNE@LNE-AgriEarth.com
LNE Agri Earth (Pty) Ltd	JHB	Sales	Guillaume	0861 888 008	083 327 3237	LNE@LNE-AgriEarth.com
LPM Procurement	Germiston	Office	Linda Patricio	011 776 9160	083 637 7122	info@lpmprocurement.co.za
Machinery Contractors	Brits		Wayne	012 250 3534		wayne@machinerycontractors.co.za
Mae Equipment	Witbank	Sales	Thomas Mittag		072 545 6223	info@mae-equipment.com
Mafika Engineering	JHB			011 334 1120		info@mafika.co.za
Marange Plant & Mining	Bloemfontein		Maryke	053 841 0415	082 296 9810	maryke@marange.co.za
Marsay Equipment	Johannesburg		Tim Marsay	011 781 7410	083 654 4248	tim@marsayequip.co.za
Masslift Africa Mitsubishi Forklifts Dbn		Product Support/Spares	Brandon	031 700 8480	078 697 6161	Brandon@mlift.co.za
McKenzie Plant	Sales	Richmond/KZN	Stuart McKenzie	033 212 2181	082 558 7901	sjm@mckenzieplant.co.za
MHS Plant	JHB	Sales	Conrad	010 500 6193	082 781 9481	conrad@mhsplant.com
Midplant Services	JHB	Sales	Kellas	011 967 0055/60	083 675 1385	sales@midplant.com
Midplant Services	JHB	Sales	Jeff	011 967 0055/60	083 657 6123	sales@midplant.com
Midplant Services	JHB	Sales	Lee	011 967 0055/60	083 459 1695	sales@midplant.com
Milltech Engineering			Neil	011 421 7821	083 460 6510	neil@milltech-eng.com
Multi One Evolution	Benoni		Lofty Van Wyk		082 888 8899	info@multi-one.co.za
Mzantsi Transmissions	Johannesburg	Sales	Darryl Cilliers	011 868 5130	071 684 5784	info@gearboxes.me
N12 Truck Yard	Delmas – Mpumalanga				013 661 1039	sales@n12truckyard.co.za
Nduna Spares	Steelport		Natasha Reynders	013 230 3852		ndunaspare@gmail.com
New Beginnings Designs	JHB		Suken	011 791 4120	082 923 7987	suken@nbdesigns.co.za
NUCO Auctioneers	Dooringkloof East Pretoria		Jaco De Jager		011 206 8963	jaco@nucoauctioneers.com
One Stop Procurement	Benoni		Roger Melenas	011 420 1003	079 493 4486	roger@onesp.co.za
P&R Earthmoving	JHB	Sales	Scott	010 823 6385		scott@prearthmoving.com
P&R Earthmoving	JHB	Sales	Grant	010 823 8821		grant@prearthmoving.com
P&R Earthmoving	JHB	Sales	Ladis	010 823 7322		ladislas.l@pandearthmoving.com
P&R Earthmoving	JHB	Sales	Greg	010 823 6276		greg@prearthmoving.com
P&R Earthmoving	JHB	Sales	Kyle	010 823 6385		kyle@prearthmoving.com
P&R Earthmoving	JHB	Sales	Conrad	010 823 7972		conrad@pandearthmoving.com
P&R Earthmoving	JHB	Sales	Rikus			rikus@prearthmoving.com
Pacific Construction Equipment		Fairleads Benoni	Mark	011 453 1567	082 441 4587	markivan@mweb.co.za
Paramount Tracks	JHB	Sales		010 007 3258	082 894 5547	sales@paramountracks.com
Paul Heslop Plant Services			Paul Heslop	086 111 5422	074 101 8239	paul@pixie.co.za
PEX Hydraulics	Cape Town	Sales	Nick Kotzee	021 556 3232		nick@pex.co.za
PEX Hydraulics	Johannesburg	Sales	Mark Dickason	011 882 8413		mark@pex.co.za
Pex Hydraulic Repairs	KZN	Sales	Priscilla Shanker	031 705 5050	084 429 8654	priscilla@pexkzn.co.za
Pilot Crushtec	JHB			011 842 5600		sales@pilotcrushtec.co.za
Plant Finder	PE		Shawn Michell	041 379 1717	082 568 4033	shawn@plantfinder.co.za
Powertrans Rebuild Centre	Isithebe		Ricky Naidoo	032 459 5700	082 555 4925	info@powertrans.co.za
Power Transmissions Technology Benoni			William	011 022 8570		info@pttech.co.za
Primeplant	JHB		Francois	011 979 4853	066 489 4891	spares@primeplant.co.za
Queensburgh Plant Sales	JHB	Used Sales	Wikus	011 964 1631	083 235 5665	qpsales@mweb.co.za
Queensburgh Plant Sales	JHB	New Sales	Albert	011 964 1467	082 652 4907	qpsales@mweb.co.za
R21 Trucks	Centurion	Sales Manager	Mark Noble	011 206 8958	082 226 2220	mark@r21trucks.co.za
Ramm Parts	Witbank		Adriaan	076 127 2977		adriaan@rammparts.co.za
Ramm Parts	Witbank		Mark	072 530 7373		marc@rammparts.co.za
Ramm Parts	Witbank		Rodney	073 103 9582		
Randle Parts	KZN	Sales	Stan		083 653 4270	
Randle Parts	KZN	Sales	Justin		083 639 1982	justin.cope@randleparts.co.za
Randle Parts	KZN	Sales	Geoff		074 843 5298	
Rankin Training	DBN		Marcel	031 702 8447	082 909 9070	marcel@rankintraining.co.za
Reef Fuel Injection Services	JHB	Manager	Warren Hauser	011 873 2354		warren@reeffuel.co.za
Rent a Dozer	Marble Hall	Owner	Theodor Kleynhans	013 261 1746	083 459 5593	admin@rentadozer.co.za
Replacement Spares Unltd. / RSU	Pretoria	Sales	Paul Pelser	012 803 8714		paul@rsu.co.za
Revaro	Gauteng	Sales	Tiaan	+27 11 794 8271	081 008 7331	sales@revaro.co.za
Revaro	Gauteng	Sales	Hans	+27 11 794 8271	062 716 4330	sales@revaro.co.za
Revaro	Gauteng	Sales	Tammy	+27 11 794 8271	083 235 9497	sales@revaro.co.za
Revaro	Gauteng	Sales	Mark	+27 11 794 8271	076 147 3572	sales@revaro.co.za

Quick Reference

COMPANY	BRANCH	DESIGNATION	CONTACT	TEL NO	CELL	EMAIL
Rham Equipment	Olifontsfontein		Michael Combrink	011 203 7900		info@rham.co.za
Rhino Excavator Hammers	JHB		Paul	086 111 5422	074 101 8239	sales@rhinohammers.co.za
Rhino Excavator Hammers	JHB		Clive	(011)397 3327	071 670 8707	sales@rhinohammers.co.za
Rocktech Earthmoving Wearparts	JHB	Manager	Derek Swift	011 793 6838	082 561 4682	derek@rocktech.co.za
Roger's Undercarriage	JHB			011 964 2695	083 974 5851	rogers.uc@mweb.co.za
Ruspet Exhausts	JHB		Russell	011 827 2824	083 448 7669	russell@ruspet.co.za
Safety Grip	JHB	OTR S/Manager	Tewus Wesse	011 708 6660	083 639 2290	tewus@safetygrip.co.za
Scotty's Plant Hire	Pinetown		Ashley Scott	031 700 8000		scottys.plant@mweb.co.za
Scotty's Plant Hire	Pietermaritzburg		Ashley Scott	033 386 1653/14		scottyspmbsales@mweb.co.za
Sclanders Mech Natal		Sales	Ivan Kaisten	031 700 8083	083 653 3724	ivan@schlandermech.co.za
SEM	JHB	Parts	Barry Fang		072 399 9817	bm@semrsa.co.za
SEM	JHB	Parts	Saaj		061 564 1167	parts1@semrsa.co.za
Sew's Plant & Civils	KZN		Sunash	031 507 2491	082 284 5082	info@sews.co.za
Shin Li Trading	Johannesburg			011 396 1081/87	079 872 0465	sales@shinlitrading.co.za
Shonakhona Logistics				032 943 3428	073 188 2004	
Sino Plant	Gauteng	Sales Manager	Mark Noble	011 206 8958	082 226 2220	mark@sinoplant.co.za
Spec-Cast Wear Parts	JHB	Sales Manager	Joe Venter	011 396 1713	074 134 5507	undercarriage@spec-cast.co.za
Spec-Cast Wear Parts	Middelburg	Sales	Herman Bezuidenhout	013 813 1413	072 187 6943	herman@spec-cast.co.za
Spec-Cast Wear Parts	Kathu, N/Cape	Sales	Ilse van Rooi	053 010 1304	067 414 8832	northerncape@spec-cast.co.za
Sintech	JHB	Sales	Jacob Nkabinde	011 823 2359		sales@sintech.co.za
SparePower	JHB	Parts Sales		011 845 4184	082 457 2804	terry@sparepower.co.za
STM Mining	JHB	Sales	Barney v Rooyen	011 894 6192	072 086 6163	barney@stmmining.co.za
Tambani Hydraulics	JHB		Lee Bray	071 687 9274		lee@tamhyd.co.za
The CAT Rental Store / Barloworld		Durban		(031)569 8500	082 909 9188	mnicolia@barloworld-equipment.com
The Seat Connection	JHB	Sales	Lydia/Graham	011 452 6802/6814		info@seatconnection.co.za
TJB Earthmoving Parts Buying	JHB		Brad	+27 71 154 3786		brad@tjbeearthmoving.co.za
Tommy's Auto Parts	Newcastle		Ahmed	034 375 8111	072 889 2581	exportintl@aol.com
Tractor and Grader Supplies	JHB	Sales	Jeannine	011 392 7533		jeannine@tags.co.za
Tractor and Grader Supplies	Witbank	Sales	Markus	082 921 8634		markusv@tags.co.za
Tractor and Grader Supplies	Witbank	Sales		013 492 2399		markusv@tags.co.za
Tractor and Grader Supplies	Durban	Sales	Theo	082 553 7663		theo@tags.co.za
Tractor and Grader Supplies	Cape Town	Sales	Neal Simpson	082 606 7366		neal@tags.co.za
Tractor and Grader Supplies	Swaziland	Sales	Tiago	+268 2 518 4548		tiago@tags.co.za
Tractor and Grader Supplies	Namibia	Sales	Handre	+264 61 264710/1/2		handre@powerpartsnamibia.co.za
Transand			Fran cois Gerber	044 695 0105	082 454 0934	charlesjnr@transand.net
Trax Global	JHB		Steve	082 954 6253		steve@traxglobal.co.za
Trax Global	CPT		Eddie	082 697 0534		parts@traxglobal.co.za
Trax Global	CPT		Bev	083 505 8955		bev@traxglobal.co.za
Trysome cc	JHB	Supplies	Jaco	(011)823 5650		jaco.vandermerwe@trysome.cc
TTC Engineering & Hydraulics		JHB	Owner Tino	011 845 2837	082 822 4676	tino@ttcenghyd.co.za
TTC Engineering & Hydraulics		JHB	Admin Chanel	011 845 2837		admin@ttcenghyd.co.za
Turboworks	Centurian	Sales		012 653 7507	082 824 8037	sales@turboworks.co.za
Turbo Direct	Isando	Sales		011 392 5195		
Unity	JHB	Sales		011 845 1630	082 457 0221	unitysalesandservices@gmail.com
VR Diesel & Turbo			Wayne	013 246 1003	083 310 9235	wayne@vrdiesel.net
Vendal Civils	JHB		Anton	011 801 4911/2	082 923 5397	vendels@mweb.co.za
Vendel Equipment Sales	JHB	Sales	Jaap	011 801 4911/2	082 892 1327	associated1@xnet.co.za
Vita Plant & Equipment	Brits	Machine Sales & Repairs	Costa Voyiatzakis	012 252 2915	082 521 7095	nicholas@vitaplant.co.za
Vortex transmissions	JHB		Johan	011 452 4430	082 333 1005	vortex@mweb.co.za
Vortex transmissions	JHB		Jan	011 452 4430	082 333 1004	vortex@mweb.co.za
WH Auctioneers	Midrand	Sales	Shannon	011 574 5700	084 520 5000	info@whauctions.com
WH Auctioneers	Midrand	Sales	Mathew	011 574 5700	084 252 5000	info@whauctions.com
WH Auctioneers	Midrand	Sales	Tim	011 574 5700	082 371 1069	info@whauctions.com
WAHA Equipment	Midrand	Sales	Will	011 574 5728	076 037 9516	will@waha.co.za
Wearpact	JHB	Sales	Linda	011 845 3234	083 453 3960	mwwrp@mweb.co.za
Weichai	JHB	Parts	Barry Fang		072 399 9817	bm@semrsa.co.za
WesTrac	AUS		Ron Lanzon	+61 418 927 625		Ronald.Lanzon@westrac.com.au
Wilson Plant	CPT	Sales	Miles Wilson	021 534 9536	082 928 9215	admin@wilsonplant.co.za
Yellow Metal SA	Pretoria	Sales	Pieter Botha	011 970 1299	082 805 8220	sales@ymsa.co.za
ZF Services South Africa	JHB	Sales: Service Parts	Warren Viviers	(011)457 0031	082 776 2759	warren.viviers@zf.com
ZF Services South Africa	JHB	Workshop:Off-road division	Christo Uys	(011)457 0091		christo.uys@zf.com

Want Your company listed in our Quick Reference Guide? Please email your company details to janine@earthbroker.co.za





**KICKASS
COMPANY**

WEICHAI

PRODUCT SUPPORT AT ITS BEST

Official Distributor for WEICHAI Parts
New Machine Sales | Rental | Parts and Product Support

**PRODUCT SUPPORT
AT ITS BEST**



OUR BRANDS & OUR PARTNERS



FAW Q8



AEOLUS



SEM

A Caterpillar Brand



EQUIPMENT SOLUTIONS AFRICA



POWERSTAR

trucks built to last



KRAGHOND



HUNTER

14 Buwbes Rd, Sebenza

Barry - 072 399 9817

bm@semrsa.co.za

Sweet deals



Prices cropped

Part No.	Description	Price
160015	Grab Pivot Spacer Bush	R245,00
160330	Pivot Pin, Main Boom	R1 850,00
160431	Seal Retainer, Tail Wheel Hub	R180,00

Part No.	Description	Price
180192	Steering Pedal Outer Mounting Bracket	R425,00
187602	Cane Grab Tine Stay	R550,00
230131	H/Duty Cane Grab Cylinder	R7 550,00

Bell1604

Because your investment deserves some TLC after a busy season.

Special valid from October 2021 to end March 2022 • Contact your nearest Bell customer service centre for more info.

FOLLOW US ON    
E-mail: bellparts@bellequipment.com
www.bellequipment.com

**Strong Reliable Machines
Strong Reliable Support**

BELL