

your sourcing solution for new & used equipment & machinery

earthbroker

email: janine@earthbroker.co.za web: www.earthbroker.co.za

volume 19 | issue 12 December 2023

Season's Greetings

Relax knowing we're here to
help you gear up for success
in the coming year.

BELL
South Africa

JCB

KOBELCO

BELL

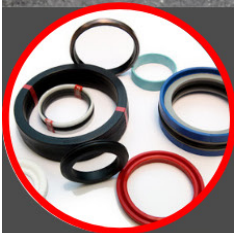


504 Pretoria Road, Fairleads, Benoni 1501


TEL: 011 1003/1865

• Seals • Bearings • Hydraulic Components


WE PROVIDE OUR CUSTOMERS WITH THE BEST SERVICE, WITH TEN YEARS EXPERIENCE IN THE INDUSTRY




-SEALS-




-BEARINGS-




-TOOLS &
INDUSTRIAL
SUPPLIES-



-CHROMESTOCK-



-Hydraulics-



-Plastic Engineering-

-BRANDS WE CATER FOR-





• Seals • Bearings • Hydraulic Components



• Seals • Bearings • Hydraulic Components



• Seals • Bearings • Hydraulic Components

Contact Details

Sales Manager & Editor
Janine Sargeant
083 456 4027

Design / Layout
Dylan McDonald
082 485 3001

Sales Contact
083 456 4027

Electronic Origination & Printing
ROC Media

The Editors welcome articles and photographs, which will be considered for publication on their merit.

Disclaimer: The Editors and Publisher do not necessarily endorse any views or statements made by contributors.

Janine Sargeant
083 456 4027
(FAX) 086 685 1258
janine@earthbroker.co.za

Physical Address:
Unit 9A, Bishop's Court,
8 Delamore Rd,
Hillcrest, Durban, 3610

Postal Address:
P.O. Box 2484,
Hillcrest,
3650

Banking Details:
Earthbroker
First National Bank
Hillcrest
Code: 223726
Account No.: 62295649308



Audit Bureau of Circulations
of South Africa

We are ABC accredited



Manufacturer's names, numbers & descriptions are used for reference purposes only & it is not implied that any part listed is the product of the manufacturers.



82

Babcock

Babcock provides total fuel lockdown on every new DAF truck



81

ELB Equipment

MDS Track Trommel - Roll out the barrel and make barrels of money



83

Philippi-Hagenbuch

Philippi-Hagenbuch Custom Engineers
Asymmetrical Hard Rock Body for Underground Hauling Environments



80

Shamrock Handling Concepts

Shamrock Handling Concepts launches new generation Moffett M5 NX and M8 NX truck mounted forklifts



79

Vesconite

World's largest copper producer reports remarkable success with new Vesconite Hilube bushings

Industry News

Stay up to date with the latest Industry news

Contents

Advertisers Index	88-89	MAE Equipment	10-11
All Africa supplies	42	Mayfair Gearbox	54
AmPlant	20	McKenzie Plant Sales	26
Atlas Masjiene	31	Mid Plant Services	34-35
Bell Equipment	1,64,96	Mzantsi Transmissions	20
Belrex 97 cc	23,30,55,68	New Beginning Designs	13
Benetrax Machinery	15	One Stop Procurement	2
Beyers Truck and Plant	17	Paramount Group	40
BLC Plant	48	Power Transmission Technology	59
BLC Trucks	49	Prime Plant	41
BLC Parts & Components	50	Pro Link Hydraulics	5
Blumaq South Africa	44-45	RC Earthmoving Investments	26
Brakecore Supply Co.	53	Rhino Excavator Hammers	9
Caliber Machinery	51	Rondebult Construction Machines	27
CATERLIM	28	Ruspet Exhausts	28
Centrax	66-67	Shin Li Trading	61
Changlin	26	Sintech	6
Dozer Earthmoving	32-33	Spec-Cast Engineering	12
Dura Equipment Sales	22	Spec-Cast Wear Parts	36-39
Dura Parts	43,69	STM Mining	62-63,73
EarthComp Earthmoving	52	Tempo Attachments	65
Earth Mach	7	The Seat Connection	12
East Coast Gears	26	TraxGlobal	70
Equipment Parts & Engines	29	Turbo Direct	58
ESP	74-77	Ultimate Exchange Components	60
Gears for Africa	72	VE Sales	46-47
Great North Power Solutions	28	Vortex Transmissions	14
Handax Machinery	18-19	Weichai & SEM Parts	95
Hurricane Diesel	71	Wearpact	8
Industrial Plant Solutions	78	Zoomlion - MAS Power	21
ITR Africa	24-25	Machine Classifieds	84-87
Inmine - Inala Mining Services	56-57	Quick Reference	91-94
LNE Agri Earth (Pty) Ltd	16		
Landbou Parts	29		
LIMCAT	28		

earthbroker

your sourcing solution for new & used equipment & machinery

MERRY
Christmas

And Happy New Year

During the Holiday Season more than ever, our thoughts turn gratefully to our advertisers who have made our progress possible. And in this spirit we sincerely say Thank You and Best Wishes for the holiday season and a Happy New Year!



Address: V & M Junction, c/o Lavender & Linvelt Rd, Bon Accord

Telephone: 012 007 0278 | 082 374 0582 (Workshop) | 082 736 5768 (Rustenburg) | 079 296 1678 (Sales) | 072 216 7334 (Middelburg)

E-Mail: workshop@myprolink.co.za | pumps@myprolink.co.za • **Website:** www.prolinkhydraulics.co.za



- HYDRAULIC CYLINDERS
- SEALS - HYDRAULIC, EARTHMOVING & AUTOMOTIVE
- RUBBER HOSE, STEEL TUBE & FITTINGS
- ONSITE LINE BORING
- POWERPACKS

REPAIR, SUPPLY AND TEST OF PUMPS & PARTS

- Repair & Supply of Cast Iron & Aluminium Pumps & Motors
- Kawasaki K3V, K5V, K7V (63, 80, 112, 140, 180, 200, 280)
- Kawasaki M5X (130, 180)
- Rexroth A10V (18, 28, 45, 60, 71, 100, 140) A6VM160
- Hitachi HPV (102, 116, 145)
- Vickers PVE (19, 21)
- Vickers PVH (74, 98, 131)
- Vickers TA1919
- Danfoss M46, MPT044
- Sunstrand PV (20, 21, 22, 23, 24)
- Testing of All Hydraulic Pumps & Motors with Digital Test Certificate

PRO LINK
LINE BORING

FTF

KATO

DOOSAN

HITACHI

Sumitomo

CASE
CONSTRUCTION

MITSUBISHI

PRO LINK
SEALS

VOLVO

KOBELCO

KOMATSU

LIEBHERR

BELL

CAT

JOHN DEERE



KESSLER AXLE



29 Romeo Street, Boksburg, South Africa
www.sintech.co.za | sales@sintech.co.za | +27 (0)11 823 2359



@sintechza



@sintechza



@sintech





Earth Mach

MINING AND CONSTRUCTION EQUIPMENT



Office: +27 17 843 2072

Sales

Chris: +27 81 728 6914

Chris Jnr: +27 83 675 8128

Parts

Cindy: +27 72 757 2105

Michelle: +27 72 650 6603

- BACK HOE LOADERS (TLB) • BLOCK HAULERS (GRANITE) • LANDFILL COMPACTORS
- BULL DOZERS • EXCAVATORS / WHEEL EXCAVATORS • SKID STEERS • ROLLERS



Repairs on all types of equipment Cummins engine conversion on Komatsu TLB's / Repair & supply of New radiators break & clutch repairs / General repairs & rebuilding / Auto electrical repairs & rewiring / Fuchs oils & greases / Field service repairs

GENIUNE SEM PARTS QUALITY AT ITS BEST



DISTRIBUTORS OF SEM CONSTRUCTION EQUIPMENT
THE PERFORMANCE YOU NEED THE SUPPORT YOU EXPECT



MOTOR GRADERS



WHEEL LOADERS



ROLLERS

www.earthmach.co.za

Lean In
This Festive
Season



MANUFACTURERS, SUPPLIERS AND STOCKISTS OF:

CUTTING EDGES | MOLD BOARD LINERS | GRADE BLADES
TIPS AND ADAPTORS | RIPPER SHANKS | END BITS



WE MANUFACTURE, SUPPLY AND STOCK G.E.T. FOR:
CAT | KOMATSU | VOLVO | HITACHI | BELL | LIEBHERR | JCB | CASE
TEREX | FURUKAWA | LIUGONG | SANY | SANYO | SHANTUI | FIAT

WEARPACT ALSO OFFERS A SPECIALIST BUCKET REPAIR SERVICE

WEARPACT

☎ 011 420 2257 / 2172 / 2216
011 845 3234 / 3272 / 3051
011 421 4705
✉ mwwrp@mweb.co.za

*MANUFACTURER'S NAMES, NUMBERS & DESCRIPTIONS ARE USED FOR REFERENCE PURPOSES ONLY. IT IS NOT IMPLIED THAT ANY PART LISTED IS THE PRODUCT OF THE MANUFACTURERS.

www.wearpact.co.za



RHINO
Earthmovers
Excavator Hammers



**SALES & RENTALS OF
EXCAVATORS & TLB'S
WITH ATTACHMENTS.**



HEAD OFFICE
074 922 2382

RENTALS
082 887 8636

SALES
071 670 8707

BREAKING FOR SPARES

- CAT 330D
- CAT 320D
- KOMATSU PC400

MACHINES FOR SALE

- CAT 307 PIPED
- CAT 312 PIPED
- CAT 931 TRUCK LOADER
- CAT 320D & 330D PIPED
- JCB JS200 & JS205 PIPED
- VARIOUS SIZE EXCAVATOR

ENGINES FOR SALE

- CAT 3306
- CAT 3052
- CAT 3064
- CAT C7
- KOMATSU 60125 (375-5)
- ISUZU 6HK1 (HITACHI)

FOR ONSITE AIRCON REPAIRS

CONTACT DAVE: 083 600 3308

sales@rhinohammers.co.za | hire@phplant.co.za | cjago@global.co.za

www.rhinohammers.co.za | www.phplant.co.za

THOMAS MITTAG
Cell: +27 72 545 6223
Mail: info@mae-equipment.com

MAE Equipment
Witbank/Riverside
(Yard)

www.mae-equipment.com

MAE

EQUIPMENT

EPIROC D65 FLEXIROC DRILL RIG



2017 model

Call for Details

SANDVIK PANTERA DP1500I



2019 model

Call for Details

EPIROC DM30MK1 DRILL RIG



2014 model

Call for Details

EPIROC DM30MK2 DRILL RIG



2015 model

Call for Details

EPIROC DM45



refurbished

Call for Details

SANDVIK LEOPARD DI550



2016 model

Call for Details

CAT 777D DUMP-TRUCK



2012 model
2 units available
Call for Details

HITACHI EX1200 EXCAVATOR



2016 model

Call for Price

VÖGELE PAVER SUPER 1603-3



2015 model

Call for Details

**WE PAY
CASH WITHIN
24 HOURS**

WE BUY ALL KINDS OF EARTHMOVING,
CONSTRUCTION OR MINING MACHINERY

PLEASE CONTACT OR SEND OFFERS
TO info@mae-equipment.com

**WE OFFER EASY FINANCE
FOR OUR MACHINES**

PLEASE CONTACT ME ON +27 72 545 6223 OR SEND MAIL
TO info@mae-equipment.com

„Your Partner for new & used Machinery and Equipment.“

THOMAS MITTAG
Cell: +27 72 545 6223
Mail: info@mae-equipment.com

MAE Equipment
Witbank/Riverside
(Yard)

www.mae-equipment.com

MAE

EQUIPMENT

METSO LT120 JAW-CRUSHER



2020 model

Call for Details

METSO LT300 CONE-CRUSHER



2020 model

Call for Details

METSO LT120 JAW-CRUSHER



2022 model

Call for Details

VÖGELE PAVER SUPER 1603-2



2012 model

Call for Details

VÖGELE PAVER SUPER 1803-2



2012 model

Call for Details

WIRTGEN W100F



2010 model

Call for Details

WIRTGEN W150F



2015 model

Call for Price

WIRTGEN W210F



2013 model

Call for Price

WIRTGEN W100F



2014 model

refurbished - low hours
Call for Price

**WE PAY
CASH WITHIN
24 HOURS**

WE BUY ALL KINDS OF EARTHMOVING,
CONSTRUCTION OR MINING MACHINERY

PLEASE CONTACT OR SEND OFFERS
TO info@mae-equipment.com

**WE OFFER EASY FINANCE
FOR OUR MACHINES**

PLEASE CONTACT ME ON +27 72 545 6223 OR SEND MAIL
TO info@mae-equipment.com

„Your Partner for new & used Machinery and Equipment.“



SPEC-CAST ENGINEERING

Trusted to deliver

Bulk Materials Handling Products

Bucket Elevators



Steel Buckets

Suitable for elevating sharp, bulk density materials



HDPE Buckets

Suitable for handling large volumes of all types of grains, feed and most food products



Nylon Buckets

Suitable for high impact & abrasion resistance. Better heat resistance and handling hot, abrasive and sticky materials

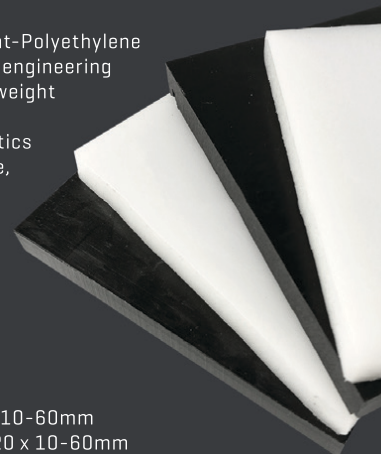
HDPE & UHMWPE Sheets

Ultra-High-Molecular-Weight-Polyethylene (UHMWPE) is thermoplastic engineering material, and its molecular weight can reach 4.5 to 9 million. It combines many characteristics such as abrasion-resistance, impact resistance/absorption, chemical corrosion resistance, low temperature resistance and self-lubrication etc.

Available in Black or White

HDPE SHEET: 2000 x 1000 x 10-60mm

UHMWPE SHEET: 3080 x 1220 x 10-60mm



Contact our Bulk Materials Handling Specialist: Brian Jansen

Cell: +27 71 147 6868 | Email: brianj@spec-cast.co.za | Tel: +27 11 396 1713/7 | www.spec-cast.co.za



The Road to Recovery

Merry Christmas
And Happy New Year

THE BELL GRAMMER SEAT CYCLE

Damaged Bell Grammer Seat

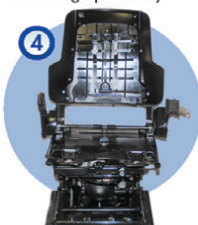
Mechanisms stripped from the seat. Parts thoroughly checked, tested and repaired or replaced.



Seat suspension repaired to operational order.



Mechanisms rebuilt and suspension re-assembled. Awaiting upholstery.



Dust cover fitted and seat fully restored.

The seat CONNECTION

The **Seat Connection** specialises in the complete mechanical repair and rebuild of original Bell Grammer operator seats.

Standing the test of time, our expertly refurbished truck seats offer reliability, affordability, keeping your driver safely on the road.

30 years of service and product knowledge makes us the seating company you can trust.

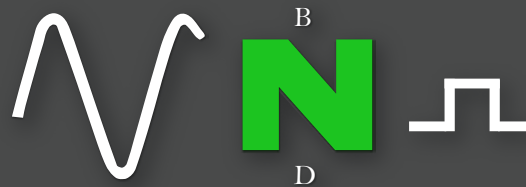
Quality service, the secret to our success

011 452 6802

info@seatconnection.co.za

www.seatconnection.co.za

102 8th Ave, Edenvale, Gauteng



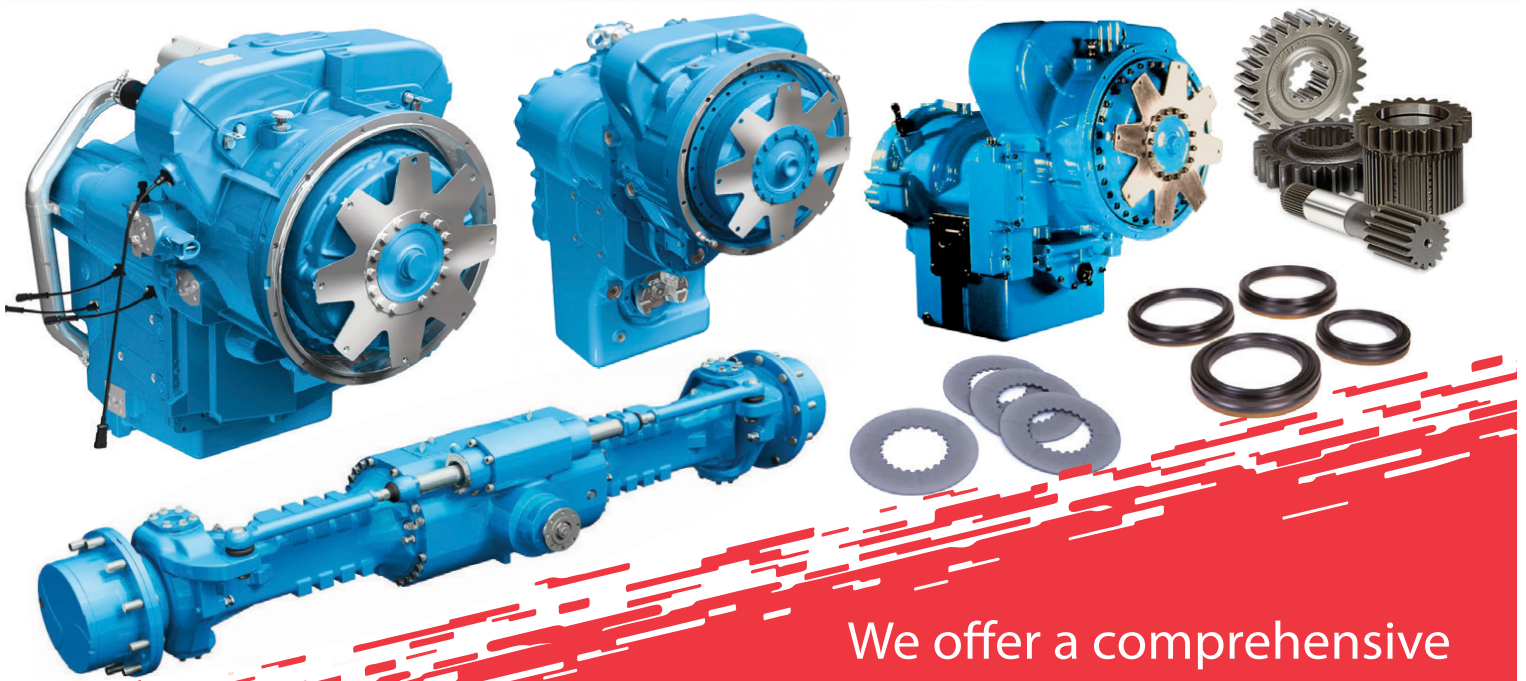
ISO 9001 Accredited

Authorised Service Centre



New Beginnings Designs is the official
Dana Authorised Service Center
for Sub-Saharan Africa and stockist for Dana Products:
Spicer/Clark/Hurth transmissions, axles and spare parts.

Repair and Overhaul of Axles and Transmissions



We offer a comprehensive
range of **Genuine Spicer Parts** suitable
for the following brands: Atlas Copco, Bell, Caterpillar,
Dezzi, Hitachi, Hyster, JLG, Kalmar, Komatsu, Liebherr, Linde,
Manitou, Sandvik, Terex and many more.

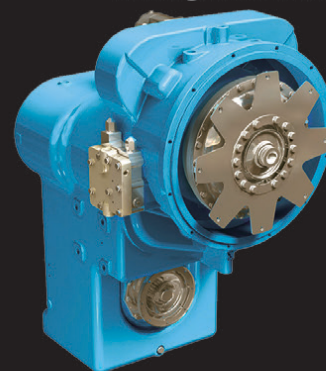
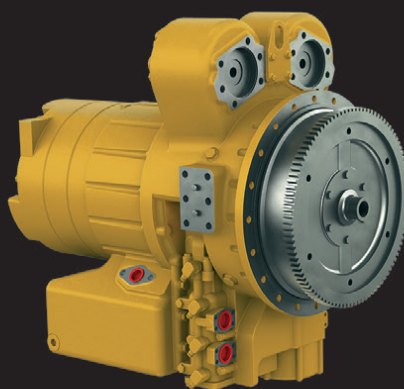
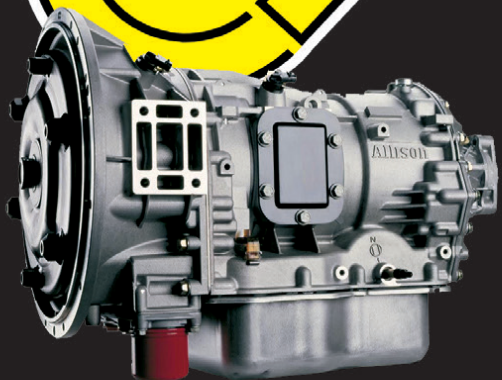
CONTACT US

Phone: +27 11 791 4120 | WhatsApp: +27 64 660 0964
Email: info@nbdesigns.co.za
Website: www.nbdesigns.co.za
Address: 1146 Minnie Postma Avenue, Florida 1709





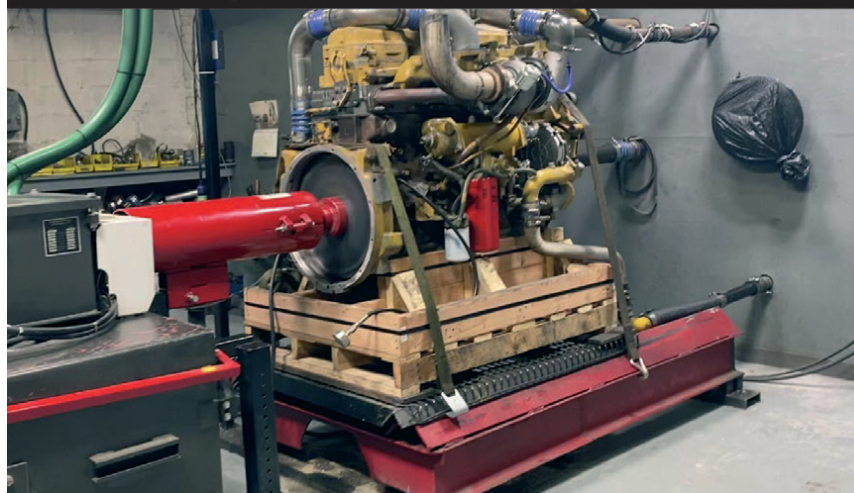
Tel: 011 452-4430/1
Parts: 011 452 3296 / 452 3390
Ryno: 082 333 1005
Jan: 082 333 1004
Fax: 011 609 5302
Email: spares@vortex-vt.co.za
 admin@vortex-vt.co.za



Allison Fuller • Clark • Caterpillar • Funk Twin Disk



Dyno Testing



Bell Dropboxes



Vortex Transmissions offers a complete array of diagnostic and repair services for heavy duty automatic transmissions. These include services for industrial earthmoving and agricultural vehicles.

We use a mixture of experience and sophisticated technology to perform diagnostics, allowing us to take a focused approach to repairing transmissions.

NEW STOCK ALERT



GRADER

XG3220N

ENGINE	SDEC
MODEL	SC9D24G3
RATED POWER	179KW / 2200RPM
RATED SPEED	2200rpm
LENGTH X CHORD HEIGHT	4270 X 610
ROTARY ANGLE	360°
TILTING ANGLE	90°
GEARBOX TYPE	ELECTRO-HYDRAULIC GEAR SHIFT
TYRE SPECIFICATION	17.5-25
TYRE PRESSURE	0.26-0.32Mpa
OVERALL DIMENSIONS OF BASIC GRADER	9200 X 2620 X 3360
MAXIMUM TRACTION	92kN
OVERALL WEIGHT OF GRADER	17000kg
SPEED OF FORWARD TRAVEL	5.1km/h, 8.7km/h, 11.4km/h, 19.5km/h, 24.1km/h, 40.1km/h
SPEED OF BACKWARD TRAVEL	5.1km/h, 11.4km/h, 24.1km/h
TILTING ANGLE	+/- 17°
STEERING ANGLE	+/- 45°
SWING ANGLE	+/- 15°
GROUND CLEARARENCE	605mm



ROLLER

XG614H

BASIC TECHNICAL		ENGINE	
OPERATING WEIGHT	13800kg	ENGINE MODEL	6BT5. A9
ALLOCATED WEIGHT OF FRONT DRUM	8300kg	RATED POWER	112Kw
DRAW BAR PULL	385N/cm	RATED SPEED	2500r/min
SPEED I	0-4.3km/h	OPERATING RANGE	
SPEED II	0-6.4km/h		
SPEED III	0-9.2km/h		
DIMENSIONS		GRADEABILITY	45%
OVERAL DIMENSIONS (LENGTH x WIDTH x HEIGHT)	6194 x 2270 x 3170	MINIMUM EXTERNAL TURNING RADIUS	6300mm
DIMENSIONS OF VIBRATION WHEEL (DIAMETER x WIDTH)	1550 x 2130	VIBRATION FREQUENCY	30Hz
		THEORITICAL AMPLITUDE (HIGH / LOW)	1.7/0.85mm
		CENTRIFUGAL FORCE (HIGH / LOW)	260/130kN

GAUTENG (HEAD OFFICE):

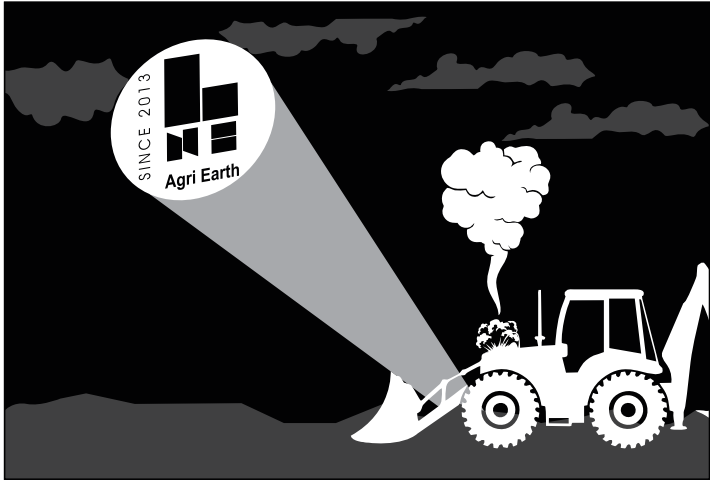
44 VIEWPOINT ROAD
BARTLETT, BOKSBURG, 1459
GAUTENG, SOUTH AFRICA
TEL: +27 (0)11 397 1313

CAPE TOWN:

WILLEMSRUST FARM
BOTTELARY ROAD
KUILSRIVIER
TEL: +27 (0)71 599 5424

BENETRAX MACHINERY

WWW.BENETRAX.CO.ZA • SALES@BENETRAX.CO.ZA



SINCE 2013



+27 (0)861 888 008
+27 (0)83 327 3237 (A/H)

LNE@LNE-AgriEarth.com
www.LNE-AgriEarth.com

Agri Earth www.LNE-AgriEarth.com

 **CARRARO** Spare Parts Authorized Dealer

You've reached **LNE**,
how may we assist you?

later that day...

**FAST
DELIVERY**

Downtime
minimized!
Fantastic
service!!!

Page 16

volume 19 issue 12

machinery & equipment **earthbroker**

REVARO



POWERSTAR

westrand



SHANTUI

VALUE THAT WORKS



XCMG



The Beyers difference

- Reliable
- Efficient
- Quality
- Support



WhatsApp us:
078 725 6917

WISHING A HAPPY FESTIVE SEASON



WhatsApp: 078 725 6917 | Email: beyers@truckandplant.co.za
Sales: Morné: 073 289 3078 | Adriaan: 073 309 8912

Scan to whatsapp

SHANTUI
VALUE THAT WORKS

BLACK FRIDAY



SE210W Excavator

FREE SERVICE PLAN UP TO 12 MONTHS/1000HRS!

Operating Weight
21,100kg

Rated Power
116kW@2000rpm

Warranty
2 Years /
4000 Hours

Bucket and Capacity
Rock bucket, 0.9m³

Other features:
• Top and front screen protector
• Hammer piping

NOW R 1 600 000.00**

EXCL VAT

T'S & C'S APPLY, PRICES ARE VALID UNTIL **END OF THE YEAR**

JET PARK BRANCH
UNIT 1, JURGENS STR, ISANDO, Ext5, Kempton Park

Connect with us





L55-B5 Wheel Loader

FREE SERVICE PLAN UP TO 12 MONTHS/1000HRS!

Operating Weight
17,350 kg

Rated Power
162kW@220hp

Warranty
2 Years /
4 000 Hours

Bucket and Capacity
Rock bucket, 2.7m³

Other features:
• ROPS and FOPS
• Reverse Camera

NOW R 1 300 000.00**

EXCL VAT

T'S & C'S APPLY, PRICES ARE VALID UNTIL **END OF THE YEAR**

011 390 8160

www.handaxmachinery.com

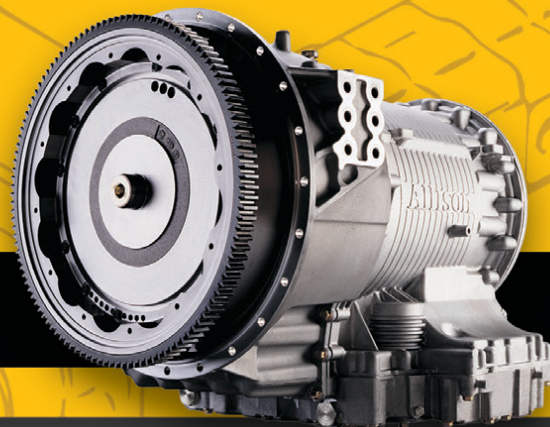
HANDAX



MZANTSI TRANSMISSIONS

6 Van der Bijl Street, Alrode South, Alberton

We offer specialised transmission repairs for heavy duty & on highway machines



WE OFFER SPECIALISED TRANSMISSION REPAIRS FOR HEAVY DUTY & ON HIGHWAY MACHINES

**BELL • TEREX • CAT • JOHN DEERE
HITACHI • DAEWOO • ZF • ALLISON • CLARK • FUNK**

We offer dyno testing on the following boxes:

**ZF - 4WG92, 4WG94, 4/6WG180/200/210/310
Allison - MD3560, HD4560**

**WE PURCHASE
2ND HAND TRANSMISSIONS**

**Bell B17B, B20B, B25B, 1206 & B40D
Transmissions in stock**

Email: info@gearboxes.me | Tel: 011 868 5130 | Fax: 086 634 7904 | Cell: 071 684 5784

Quality used
plant for sale
or hire



www.AmPlant.co.za



2No 2014 DOOSAN DA30



1No 2019 DOOSAN DA30



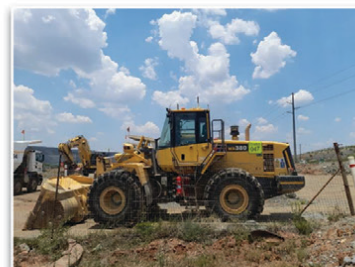
3No 2023 KOMATSU HM400-3R



1No 2020 CAT 730 | 3No 2021 CAT 730
2No 2022 CAT 730



14No 2019 SCANIA G460 8X4
MINING SPEC 20M3
ROCK BODIES



1No 2022 KOMATSU WA380-6



1No 2022 KOMATSU PC850-8R1

Contact Eddie Simpson 082 904 7694 | Email: simpsons@amplant.co.za

ZOOMLION

Mining Dump Trucks

www.zoomlionmining.co.za



125A Automatic Transmission

Load Weight: 85 tons
Capacity Struck: 38m³
Heaped: 44m³
Engine Power: 580HP
Maximum Torque: 1100 - 1900 NM
Total Power: 426 KW
Lifting: 25 MPA



115A Automatic Transmission

Load Weight: 75 tons
Capacity Struck: 34m³
Heaped: 40m³
Engine Power: 580HP
Maximum Torque: 1100 - 1500 NM
Total Power: 426 KW
Lifting: 25 MPA

- ✓ In Stock
- ✓ 1500 Hour Warranty / 12 Month Warranty
- ✓ Trained Technicians
- ✓ Workshops
- ✓ Spare Parts & Service Kits
- ✓ Finance Assistance

CONTACT US

Eric XI:

eric@maspower.co.za | +27 72 712 0957

Mathew Henderson:

mathew@maspower.co.za | +27 83 973 1378

WhatsApp: +27 63 842 3456

ZOOMLION

MAS POWER
EQUIPMENT SUPPLIER

Address: Mas Power, 11 Voyager Street, Linbro Park, Sandton, Gauteng, South Africa, 2065
Website: www.zoomlionmining.co.za Phone: Eric XI | +27 72 712 0957 Email: eric@maspower.co.za

LOVOL
WEICHAI



24/7
SUPPORT

ROBUST RELIABLE SUPPORTED



LOVOL FL936H
3 Ton, 2,0 m³ Bucket



LOVOL FL956H
5 Ton, 3,0 m³ Bucket



LOVOL FL958K
5,5 Ton, 3,3 m³ Bucket



LOVOL FL968H
6 Ton, 4,0 m³ Bucket



LOVOL FL978H
7 Ton, 4,6 m³ Bucket



LOVOL FR215E-2
21,5 Ton, 1,0 m³ Bucket



LOVOL FR330D
33 Ton, 1,6 m³ Bucket



LOVOL FR510E2-HD
51 Ton, 2,8 m³ Bucket



LOVOL FR700F
69 Ton, 4,4 m³ Bucket

VISIT OUR WEBSITE ON WWW.DURASALES.CO.ZA

JHB SHOWROOM

46 View Point Rd,
Bartlett AH, Boksburg,
1462
CONTACT NO : +27 (0) 11 918 4760

JHB SALES TEAM:

Curtis - +27 82 359 9199
Jerry - +27 82 895 5611
Johan - +27 66 279 7801
Danny - +27 60 973 0799

CPT SALES TEAM:

Gerrie - +27 82 950 7040
Cornel - +27 83 284 3088
Neil - +27 82 093 3396

CPT SHOWROOM

30 Klaat street, Kraaifontein
Industrial, Kraaifontein,
Cape Town
CONTACT NO : +27 (0) 21 988 6618



Mr. Bucket

🔊 CONGRATULATIONS!!!

3 X MB - 9000 SERIES 6.5 M³ BUCKETS HAVE BEEN DELIVERED TO NAMIBIA, TO BE USED ON THE HUSAB URANIUM MINE. WHICH IS SUITABLE FOR CAT 390/395 EXCAVATOR.



MB buckets are manufactured to CAT standard for all major brands excavators.

【 MAX TO 200T EQUIPMENTS 】



CONTACT MB BUCKET SA JASON | 082-5526326

It's more than a part,

It's moving forward together

From all of us at ITR, thank you!

We are grateful for your support and look forward to serving you in 2024.

Happy Holidays



PASSION FOR PARTS

Specialists in Aftermarket Earthmoving Parts and Solutions

Connect with us



+27 11 614 0070 | sales@itrafrica.com | www.itrafrica.com



*We hope your festive season
is a bucket full of fun!*



Manufacturer's names, numbers & descriptions are used for reference purposes only & it is not implied that any part listed is the product of the manufacturers.



Specialising in earthmoving power transmission rebuilds of:

- Front end loaders
- Final drives
- Drop boxes (transfer case)
- Differentials etc.

MANUFACTURE OF ALL GEARS AND REPAIRS



REPAIR CARRIER HOUSINGS/ HUBS



Tel: 031 701 3500 | Cell: 083 383 4943 | Fax/Email: 086 224 3982
Email: eastcoastgears@gmail.com | 24 Henwood Road, Pinetown, KZN



EARTHMOVING INVESTMENTS



NEW C11, C13, C15 AND C18 CYLINDER HEADS AVAILABLE



NEW PERKIN 1104C TO BE CONVERTED TO TLB SPEC

FOR MORE INFO 084 253 9831 | RCinvestments01@gmail.com



McKenzie PLANT SALES

Contact for more details: Tel: 033 212 2181
Cell: 082 558 7901 | Email: sjm@mckenzieplant.co.za



Komatsu D65E-12



Komatsu WA380-6



We Import & supply parts for CHANGLIN Construction Equipment



WE ALSO IMPORT AND SUPPLY PARTS FOR OTHER CHINESE EQUIPMENT



PARTS Brake pads, Brake boosters, Cylinder seal kits, Transmission control cables, Brake calliper seals, Rear diff oscillation bushes, Fuel tank filler caps and MUCH MORE

Chris. 081 728 6914 | Cindy 017 843 2072 | Michelle 017 843 2072 | Chris Jnr 083 675 8128

RONDEBULT CONSTRUCTION MACHINES

UNBEATABLE AFTERSALES SERVICE

MASSIVE PARTS INVENTORY

UNMATCHED QUALITY MACHINERY

IN-HOUSE FINANCE

Rondebult Construction Machines leads the construction, mining, agriculture, port operation, and warehouse industries with reliable machinery. We offer a wide range of high-quality equipment and provide state-of-the-art maintenance, warranties, and services. Our parts and maintenance divisions' infrastructure is of the best in the country.

From routine servicing to major breakdowns, extensive overhauls, and even complete rebuilding of machine gearboxes, transmissions, or differentials, we maintain extensive inventories of genuine spare parts. Rondebult Construction Machines is widely recognized as one of the fastest-growing leaders in the construction and mining equipment sector. Our sales and orders consistently surpass the highest expectations due to the strong demand for such equipment in South Africa.

Our mission for the past 20 years is to create sustainable and long - lasting relationships with clients by applying and strengthening the expertise we built over the years. Our service sets us apart from the rest with commitment and unmatched service.

**Tel: 013 933 3643/0800 014 548 | email: sales@rondebult.co.za
www.rondebult.co.za**





CATERLIM

Merry
CHRISTMAS

**QUALITY
EARTHMOVING
EQUIPMENT PARTS**



015 004 0165 | REP@CATERLIM.CO.ZA | WWW.CATERLIM.CO.ZA
35A CORUNDUM STREET, FUTURA, POLOKWANE



LIMCAT

EARTHMOVING EQUIPMENT WORKSHOP

**OUR WORKSHOP SERVICES AND REPAIRS AN
EXTENSIVE RANGE OF COMPONENTS, RANGING FROM
DIFFERENTIALS, AXLES AND FINAL DRIVES TO ENGINES,
TRANSMISSIONS, PUMPS AND VALVES.**

015 004 0591 | limcate@caterlim.co.za
Ptn 3 Farm Mooifontein Onverwacht Polokwane

**Great North
Power Solutions**

*Merry
Christmas*

- AIR SYSTEMS
- COOLING SYSTEMS
- ELECTRICAL SYSTEMS
- FILTRATION
- FUEL SYSTEMS
- GASKETS & SEALS



015 590 1886 | REP@GNPS.CO.ZA | WWW.GNPS.CO.ZA
35B CORUNDUM STREET, FUTURA, POLOKWANE

Russell at Head Office
Tel: 011- 827 2824/6
Fax: 011- 827 2850
russell@ruspet.co.za
felicity@ruspet.co.za

WE MUFFLE THE INDUSTRY

RUSPET EXHAUSTS

MANUFACTURERS OF TRUCK, BUS, EARTHMOVING & GENERATOR EXHAUSTS

Ruspet Durban Branch
Storm Hill
Cell: 081 737 1598
storm@ruspet.co.za



**ALL OUR EARTHMOVING SILENCERS ARE MADE TO OEM SPEC.
WE HAVE NUMEROUS SPECIFICATIONS FOR CATERPILLAR, KOMATSU AND BELL ETC.**





LANDBOUPART
www.landboupart.com

COMBINE • ENGINE • TRACTOR • GROUND ENGAGING • PARTS

The **LEADING DISTRIBUTOR** of **REPLACEMENT SPARE PARTS** for the agricultural and industrial markets.

AXLE PARTS





CARRARO
Your specialist for genuine Carraro axle parts



SPICER



DANA



AFTERMARKET

ISANDO - 12 Wrench Rd, Isando. Telephone: 011 966 9200

info@landboupart.com www.landboupart.co.za



earthbroker

your sourcing solution for new & used equipment & machinery

- Why deal with different people each month when you can deal with the same friendly people you always deal with.
- We are proudly South African. Support your country who understand your needs.
- WE are ABC Accredited - this means we do print the amount we say we print. No pie in the sky number. We send direct to the correct people in the industry.
- Your advert receives **FREE** online exposure on our website with our online magazine and the link to the magazine is on our App, Facebook, Instagram and LinkedIn.
- We design **FREE** of charge and all changes are done **FREE** of charge.
- **NO** contracts to be signed.
(Just a full calendar months notice is required for cancellation)



Audit Bureau of Circulations of South Africa

We offer excellent service and design.

Should you have people/companies you would like added to our database, we will happily do that should they not already be on our database.

Please call us for a prompt response and great service!



We have an online magazine in which your advert is advertised free of charge

EQUIPMENT PARTS & ENGINES

EST '96

REPLACEMENT PARTS *for* EARTHMOVING EQUIPMENT









011 571 9000 / 082 655 9276

[@equipmentpartssa](https://www.facebook.com/equipmentpartssa)
[@equipment_parts_engines](https://www.instagram.com/equipment_parts_engines)
[@equipmentparts](https://www.twitter.com/equipmentparts)
[@equipmentparts](https://www.x.com/equipmentparts)
[in](https://www.linkedin.com/company/equipmentparts)



Season Greetings

equipmentparts.co.za

ADT
B18 TO B50
B/C/D & E-SERIES

TLB 315 Series
SE / SG / SJ / SK / SL

JCB
3CX/DX & 4CX/DX

3WL
LOGGER & FORKLIFT



SCAN ME

MW SERIES ATTACHMENTS

**WE STAND BY YOUR SIDE
WORKING FOR SOUTH AFRICA**



ROB: 076-583-9599
DAVID: 079-498-5417

JASON: 062-055-7910
TREVOR: 082-829-6956



Merry Christmas ATLAS

M A S J I E N E

Corner of Great North & Stanley Road, Brentwood Park AH, Johannesburg
Dewald Hattingh: +27(0) 72 547 2198 | +27(0) 11 973 3737



CAT 330C
R750 000 + VAT



CAT 980G
R1 500 000,00 + VAT



CAT 16H
R2 500 000 + VAT



CAT 120G
R650 000,00 + VAT



CAT D7R
R1 700 000 + VAT



JCB 3CX 4X4
R300 000,00 + VAT



CAT 320D
R950 000,00 + VAT



PNEUMATIC ROLLER
R550 000,00 + VAT



CAT 950H
R950 000,00 + VAT



GEHL 4640
R170 000,00 + VAT



BELL BW141AD
R600 000,00 + VAT



CAT 920
R220 000,00 + VAT



BOMAG BW 177-4
R550 000,00 + VAT



BELL 2606E
R950 000,00 + VAT



CAT D7G
R700 000,00 + VAT



SITE DUMPER
R65 000,00 + VAT



CAT 224E
R250 000,00 + VAT

ATLASMASJIENE.CO.ZA | INFO@ATLASMASJIENE.CO.ZA



176 Barbara Rd, Elandsfontein, Johannesburg, Gauteng, South Africa

Mining Equipment, Components and Parts Specialists

WhatsApp icon +27 72 338 2196 | E info@dozer.co.za | W www.dozer.co.za

EQUIPMENT FOR RENTAL

CAT RIGID DUMP TRUCK



**CAT 777D
DUMP TRUCKS**



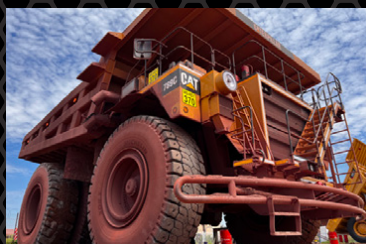
**CAT 777F
DUMP TRUCKS**



**CAT 777E
DUMP TRUCKS**



**CAT 785C
DUMP TRUCKS**



**CAT 789C
DUMP TRUCKS**

CAT EXCAVATORS & DOZERS



**CAT 6015B
EXCAVATOR**



**CAT D10T2
TRACK DOZER**



**CAT 834H
WHEEL DOZER**



**CAT 834K
WHEEL DOZER**

EXTRAS



**BELL B40D
WATER TANKER**



**CAT 769D
WATER TANKER**



**CAT 824G SERIES 2
WHEEL DOZER**



**CAT 988H
WHEEL LOADER**



www.instagram.com/dozerearth

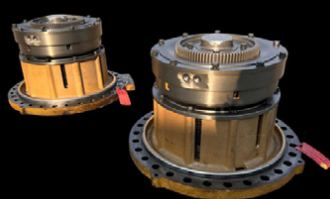


www.facebook.com/dozerparts

CAT D10T TRACK DOZER



**CAT D10T
Final Drive Gp.**



**CAT D10T
Steering Clutch & Brake Gp.**



**CAT D10T
Blade Lift Cylinder Gp.**



**CAT D10T
Ripper Lift Cylinder Gp.**

CAT D11R/T TRACK DOZER



**CAT D11R/T
Final Drive Gp.**



**CAT D11R/T
Steering Clutch & Brake Gp.**



**CAT D11R
Differential Gp.**



**CAT D11R/T
Transmission Ar.**

CAT 785C/DUMP TRUCK



**CAT 785C/D
Final Drive & Brake Gp.**



**CAT 785C/D
Torque Converter Gp.**



**CAT 785C
Differential Gp.**



**CAT 785C/D
Transmission Ar.**

CAT 789C DUMP TRUCK



**CAT 789C
Final Drive & Brake Gp.**



**CAT 789C
Torque Converter Gp.**



**CAT 789C
Differential Gp.**



**CAT 789C
Transmission Ar.**

CAT 789C DUMP TRUCK



**CAT 992G
Final Drive & Brake Gp.**



**CAT 992G
Torque Converter Gp.**



**CAT 992G
Differential Gp.**



**CAT 992G
Bucket Tilt Cylinder Gp.**

MID PLANT SERVICES

NEW EXCAVATOR PARTS, COMPONENTS AND REPAIRS

 :+27 (0)11 967 0055
:+27 (0)11 967 0060

 : SALES@MIDPLANT.COM

 : 273 3RD AVENUE, BREDELL,
KEMPTON PARK, 1619

 : WWW.MIDPLANT.COM

**THE ALTERNATIVE SUPPLIER FOR DOOSAN, HYUNDAI, VOLVO
AND MOST CHINESE EXCAVATORS SOLD IN SOUTH AFRICA.**

FOLLOW US ON:

On behalf of the entire Mid Plant Services team,
we extend our warmest wishes for a
Merry Christmas and a prosperous New Year.



Now Available at Mid Plant Services

At Mid Plant Services, we make an effort to acquire new and diverse parts to ensure that we meet the needs of all our customers.

If we don't have a part in stock, we will do our best to acquire it promptly.



NEW STOCK

- Hitachi Main Hydraulic Pumps (HPV102, HPV118 & HPV145)
- Rexroth AP2D28 Hydraulic Pump
- DX225 Trenching Bucket
 - 20Ton Bucket Assy
 - 30Ton Bucket Assy
- Engine Parts and Build Kits
- Hydraulic Pump Parts
- Swing Motor Parts
- Track Adjusters
- Travel Devices

Engine Build Kits

WHAT'S INCLUDED IN THE ENGINE KIT:

- PISTONS
- LINERS
- RINGS
- MAIN BEARINGS
- BIG END BEARINGS
- SMALL END BEARINGS
- CAM BUSHES
- COMPLETE GASKET SET
- INLET VALVES
- EXHAUST VALVES
- VALVE GUIDES

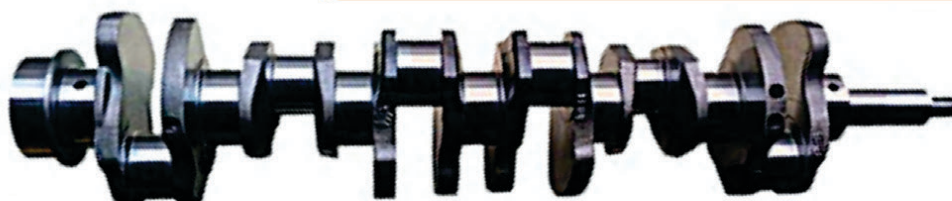


FOLLOW US ON:

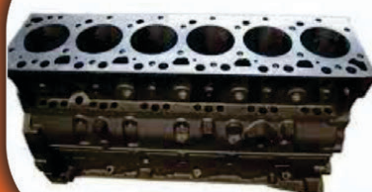


DE08 | DE12 | DB58 | D1146 | 6Ct (CUMMINS) | 6BT (CUMMINS) | D6BT (HYUNDAI)

LOOSE PARTS AVAILABLE, ENQUIRE NOW WHILE STOCK LASTS.



VARIOUS ENGINE CRANKSHAFTS



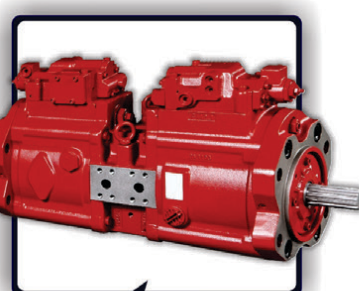
STOCK AVAILABLE:
DE08, DE12, DB58, D1146
CYLINDER BLOCKS



VARIOUS TRACK ADJUSTERS



VARIOUS FINAL DRIVES



VARIOUS MAIN HYDRAULIC PUMPS



VARIOUS SWING REDUCTIONS



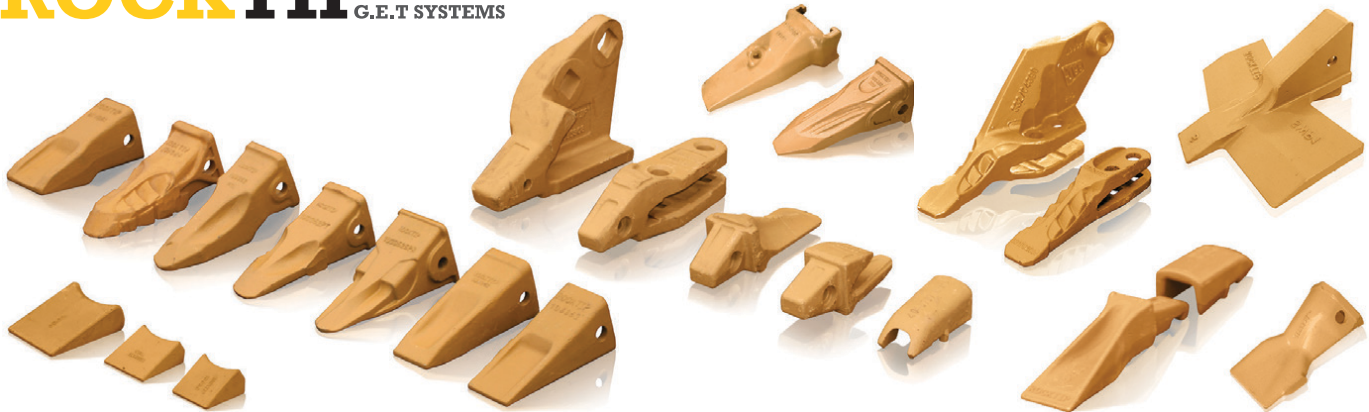
*All manufacturers names, numbers, symbols and pictures are for reference only. It does not imply that any of the parts are the product of these manufacturers.



SPEC-CAST WEAR PARTS
Trusted to deliver

Spec-Cast Wear Parts [PTY] Ltd is a leading manufacturer specializing in the supply of ground engaging tools, undercarriage, undercarriage components, track frames, suspension group replacement parts, agricultural wear parts, general castings and forgings for the construction, mining and agricultural industries.

ROCKTIP G.E.T SYSTEMS



Teeth and Adapters for Various Models



Wear Protection



Blades, Cutting Edges, End Bits and Grader Wear Parts

Manufacturers of G.E.T to fit:

CATERPILLAR	TEREX	ESCO	LIEBHERR	H & L	BOBCAT
KOMATSU	JCB	HYUNDAI	DAEWOO	BUCYRUS	MTG
NEW HOLLAND	MASSEY FERGUSON	CASE	BOFOR	LIUGONG	KUBOTA

Manufacturer's names, numbers, symbols and descriptions are used for reference purposes only and it is not implied that any part listed above is the product of the manufacturers.

Spec-Cast offers a wide range of undercarriage components covering the entire range of modern crawler machine applications in the construction, mining, utility, forestry, road, building, and agricultural industries. Covering all makes and models of machines, from drilling machines to hydraulic excavators, as well as dozers, auxiliary machines, conveyors and customised solutions.



SPEC-CAST WEAR PARTS

Trusted to deliver



Spec-Cast Wear Parts is an authorized Dealer for ITM and VEMATRAK undercarriage parts.
Call our undercarriage experts today!



Chains



Rollers



Sprockets



Idlers



Shoes



Rubber Tracks

CATERPILLAR	HITACHI	KOMATSU	LIEBHERR
6018 RH90	EX1200	PC1250	R9100
6030 RH120E	EX1800/1900	PC2000	R9150
6040/50	EX2500/2600	PC3000	R9250
RH170/200	EX3500/3600	PC4000	R9350
6060 - RH340	EX5500/5600	PC5500	R9400
7495 - 495HRII	EX8000	D375	R995
D8, D9, 10 & D11		D475	R996
			R9800

Our track workshop is available to support all your undercarriage needs

Turning of Pins & Bushes
Remove/Fit Track Shoes

Re-Build Idlers
Re-Shell Rollers

Re-Strip Grouser Shoes
Re-Rim Sprockets

With branches and distributors located in prime areas throughout South Africa, as well as several African countries, Spec-Cast is able to provide the Earthmoving, Mining and Agricultural industries with an efficient, cost effective supply and distribution network.

JHB HEAD OFFICE

+27 11 396 1717/13
aimee@spec-cast.co.za
11 Elgin Street, Pomona,
Kempton Park, Johannesburg

www.spec-cast.co.za

MIDDELBURG
+27 13 813 1413
middelburg@spec-cast.co.za
6 Jaspis Street
Middelburg, Mpumalanga

NORTHERN CAPE
+27 53 010 1304
northerncape@spec-cast.co.za
Section C3, Portion of Farm Waterraad
Kathu, Northern Cape

Follow us:





SPEC-CAST WEAR PARTS

Trusted to deliver

CATERPILLAR & KOMATSU DOZER & EXCAVATOR TRACK FRAMES



SERVICE EXCHANGE

Our Service Exchange Program provides you with a high-quality track frame rebuild solution. All PEX units are like-new, quality track frames that is on hand for delivery to keep your machine productive and keep your costs minimal.

Spec-Cast's PEX units gives you the advantage of an immediate trade-out of critical components that allows your machine to get back to work as quickly as possible.

TRACK FRAME REPAIRS

Spec-Cast offers partial repairs and full track frame rebuilds, using only quality approved parts including some OEM components that is critical to the longevity of the frame. Strict adherence to our QCP [Quality Control Procedures] provides peace of mind and builds trust in the Spec-Cast Brand. Spec-Cast's Track Frame Repairs covers a wide range of crawler machines types such as dozers, excavators and shovels across multiple manufacturers and applications.

TRACK FRAME COMPONENTS

Caterpillar and Komatsu Dozer aftermarket track frame components of the highest quality and standard are stocked for immediate supply.

- Bogie Pins and Bogie Pads
- Roller and Idler Caps
- Track Guides
- Equalizer Bars and repair components
- Trunnion's and repair components
- Bushings and Seals
- Minor Bogies



JHB HEAD OFFICE

+27 11 396 1717/13
undercarriage@spec-cast.co.za
11 Elgin Street, Pomona,
Kempton Park, Johannesburg

www.spec-cast.co.za

MIDDELBURG
+27 13 813 1413
middelburg@spec-cast.co.za
6 Jaspis Street
Middelburg, Mpumalanga

NORTHERN CAPE
+27 53 010 1304
northerncape@spec-cast.co.za
Section C3, Portion of Farm Waterraad
Kathu, Northern Cape

Follow us:



INTRODUCING



EXTREME IMPACT AND ABRASION RESISTANT WEAR PLATE

ENGINEERED TOUGH & DUCTILE, LIKE NO OTHER WEAR PLATE

QT-PLUS® wear life is 3 to 5 times longer than AR400 commodity wear steel.

QT-PLUS® proprietary chemistry and unique thermal heat-treating process produces a premium quality, severe impact and abrasion resistant plate unmatched in the industry. This incredibly tough and through-hardened steel with extraordinary ductility, is produced with tightly controlled carbon levels for ease of weldability, and excellent formability.



SPEC-CAST WEAR PARTS

Trusted to deliver



EXTREME ABRASION RESISTANT CHROMIUM CARBIDE OVERLAY PLATE

INCREDIBLE HARDNESS, UNRIVALED PERFORMANCE

CHROME WELD™ 600 is a 600 Brinnell chromium carbide plate that is ideal for surfaces requiring high levels of abrasion resistance.

CHROME WELD™ 600 typical hardness ranges from 58-62 Hrc based on weld deposit thickness. The surface of the plate exhibits numerous hairline cracks which are a natural stress relieving phenomenon that enable it to be formed, bent, and rolled without damage.



**TRUCK BED LINERS • DOZER LINERS • CHUTES • SCREENS
BUCKET WEAR STRIPS • IMPACT WEAR PLATES • HOPPER LINERS**

JHB HEAD OFFICE

+27 11 396 1717/13
info@spec-cast.co.za
11 Elgin Street, Pomona,
Kempton Park, Johannesburg

www.spec-cast.co.za

MIDDELBURG
+27 13 813 1413
middelburg@spec-cast.co.za
6 Jaspis Street
Middelburg, Mpumalanga

NORTHERN CAPE
+27 53 010 1304
northerncape@spec-cast.co.za
Section C3, Portion of Farm Waterraad
Kathu, Northern Cape

Follow us:



TRACKS & EQUIPMENT



combi wear parts
move the earth

Paramount Tracks



YOUR PARTNER IN MINING EQUIPMENT SOLUTIONS



We offer extended engineering solutions in the Manufacture, Fabrication, Refurbishment of Buckets, Bowls and Supply of Undercarriage and GET in the mining and related industries.

The Paramount Group wishes everyone a Merry Christmas & Happy New Year!

Paramount has been trading since 2013. We offer professional engineering services to the mining industry. We strive for innovation and utilize the best materials available in the market and offer best fit solutions for our customers.

Understanding our customers' requirements is of importance.

Paramount sources and provides the best engineering solutions that one suitable for your operations.

Paramount has aligned with the best manufacturers within this industry- Combi Wear parts (GET), ITM (Undercarriage), SSAB on their Hardox and XMOR range. With these partnerships we are able to service large mining companies from a manufacturing and refurbishment perspective.



PROUD SUPPLIERS OF:

Contact us on sales@paramounttracks.com & sales@paramount-equipment.com
or visit our website at www.paramounttracks.com

Gauteng
32 VAN BUUREN ROAD
HANS MERENSKY OFFICE PARK
BEDFORDVIEW, JHB
+27 10 007 3258

Mpumalanga
2 WATT STREET
INDUSTRIAL AREA, KATHU
MIDDELBURG
010-007-3109

Northern Cape
18 KALK STREET,
INDUSTRIAL AREA, KATHU
TEL: 082-902-6376 /
071-860-7978

Zimbabwe
24 GEORGE DRIVE
MASASA
HARARE, ZIMBABWE
+263-785-552-186

Botswana
PLOT 454
JWANENG
TEL: 00 27 007 3258
+267 71 968 840

Ghana
NO.12 IKM 73 PLAZA,
4 GATEWAY STREET,
COMMUNITY 12, TEMA, GHANA
+233-2044-13989

Lesotho
SEHALAHALA STREET, NO.34,
RACECOURSE AREA, MASERU
TEL: +266-5111-6442 /
+266-6200-6442

DRC
AVENUE KIGOMA N°1
LUBUMBASHI
CONGO (KINSHASA)
+243-99-022-0661

Primeplant (Pty) Ltd



Supplying
genuine & the
best replacement
parts on the market

*Merry
Christmas
and Happy
New Year*

We specialize
in the repair &
maintenance of
CAT TLB's



Tel: 011 979 4853

sales2@primeplant.co.za - 066 489 4892

sales3@primeplant.co.za - 066 489 4893

www.primeplant.co.za



Manufacturers names, numbers and descriptions are used for reference purposes only & is not implied that any parts listed is the product of these manufacturers.



All Africa Supplies

GLOBAL REACH - LOCAL SUPPLY

www.allafricasupplies.net

011 918 9976

Enquiries: sales@allafricasupplies.net

284/9 Elgin Road, Pomona AH, Kempton Park. 1619

BELL



CARRARO

HITACHI

VOLVO

Construction Equipment

DOOSAN



CAT



HYUNDAI
HEAVY INDUSTRIES CO.,LTD.

Mobil

ISUZU

KOMATSU

*All manufacturers names, numbers, symbols and pictures are for reference only. It does not imply that any of the parts are the product of these manufacturers.



BL61B
STRIPPING FOR SPARES



VOLVO EC480
STRIPPING FOR SPARES



CAT 336D
STRIPPING FOR SPARES



CAT 226B
BRAND NEW RADIATOR



FINAL DRIVES - CAT, DOOSAN,
HYUNDAI, JCB, SUMITOMO, HITACHI



USED ENGINES AVAILABLE - CAT C9,
C9.3, C13, C15, DOOSAN DE12, DE08
VOLVO DE13, CUMMINS 6BT



SWING BEARINGS, SWING MOTORS
& REDUCTIONS AVAILABLE



ZF
AXLES



CAT 966H
AXLES



TM40
FINAL DRIVES



BONFIGLIOLI 706C
FINAL DRIVES



CAT 349D
TRAVEL MOTOR



SWING MOTORS: ZX200, ZX240, ZX270, ZX300,
ZX330, ZX470, ZX520, Z 650, ZX670, ZX850, ZX870



K5V200



LIEBHERR R974 PUMP - LPV250
20 AVAILABLE

www.allafricasupplies.net

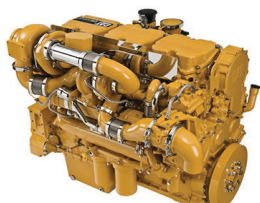


**THE EXPERTS
IN EARTHMOVING
MACHINERY COMPONENTS**

**POWERING
PERFORMANCE
ONE PART
AT A TIME.**

We carry an extensive range of
**New, Used &
Reconditioned
Engine Components**

Visit our website for available stock



**WE STOCK THE
FOLLOWING COMPONENTS**

- CYLINDER HEADS
- CRANKSHAFTS
- ENGINE BLOCKS
- GEARBOXES
- and more...



**Over 250 Machines
in Stock !!**

New stock added every month.

WE STOCK USED & REFURBISHED PARTS FOR THE FOLLOWING BRANDS

BELL

CASE

CAT

DOOSAN

HITACHI

UCB

JOHN DEERE

KATO

Kawasaki

KOBELCO

KOMATSU

LIEBHERR

mitsubishi

SUMITOMO

TEREX

VOLVO

Office: +27 82 691 9524 • Adriaan: +27 71 234 6234 • Email: admin@duraparts.co.za
223 Denne Rd. Witpoort, Brakpan 1540

www.duraparts.co.za



www.blumaq.com

Follow us on:



**We have
the part
you need**



Following our success as **Berco** product distributor in Zambia, Blumaq South Africa has now also been appointed a distributor for this quality product in South Africa.

Blumaq South Africa now also offers **Berco quality undercarriage parts and repairs** from our operation based in Wadeville, Johannesburg.

Our fully serviced Track Undercarriage workshops offers a full service including Turning of Pins & Bushes / Re-stripping of Grouser shoes / Track Link repairs / Idler and Roller rebuilds / Track Frame Rebuilds.

Contact us today for a free on site wear assessment of your undercarriage components.

Contact:

+27 11 966 5092 **Johannesburg**

+26 096 0923 962 **Kitwe**

+264 81 291 7539 **Windhoek**

john.beukes@blumaq.com

**Berco dealer in
Spain, Zambia,
Namibia, Turkey,
South Africa and
Indonesia:**



Branches in Spain: Alicante | Almería | Asturias | Barcelona | Galicia | Madrid | Mérida | Ponferrada | Sevilla | Tenerife | Zaragoza

Branches in the world: Chile | United States | France | Portugal | Turkey | China | Russia | Italy | Romania | South Africa | Zambia
Namibia | Peru | Kazakhstan



www.blumaq.com

Follow us on:



Spare parts suitable for VOLVO

We offer a wide range of items with immediate delivery for your **VOLVO** earthmoving equipment.



Alternative spare parts for Caterpillar

We offer a wide range of items with immediate delivery for your **CATERPILLAR** earthmoving equipment.

Contact:

+27 11 966 5092 **Johannesburg**
+26 096 0923 962 **Kitwe**
+264 81 291 7539 **Windhoek**
john.beukes@blumaq.com

Berco dealer in
Spain, Zambia,
Namibia, Turkey,
South Africa and
Indonesia:



Branches in Spain: Alicante | Almería | Asturias | Barcelona | Galicia | Madrid | Mérida | Ponferrada | Sevilla | Tenerife | Zaragoza
Branches in the world: Chile | United States | France | Portugal | Turkey | China | Russia | Italy | Romania | South Africa | Zambia | Peru | Kazakhstan

VEsales

T/A Associated Equipment

Plot 92 Indaba Lane off Beyers Naude, Rietfontein, Roodepoort, South Africa



Duncan: +27 (0) 83 626 5588
Anton: +27 (0) 82 923 5397
Jaap: +27 (0) 82 892 1327
Lorraine: +27 (0) 76 021 4344
Office: +27 (0) 11 801 4911

vendels@mweb.co.za
associatedloraine@xnet.co.za
ves@xnet.co.za

WE ARE BUYERS FOR YOUR GOOD RUNNING REDUNDANT EQUIPMENT



1x 2018 VOLVO EC750 DL
EXCAVATOR
FULLY REFURBISHED (75 TON)



1x 2018 CAT M 320 DL WHEELED
EXCAVATOR (ONLY 2800 HOURS)
1x 2015 KOMATSU PC300 EXCAVATOR



2x NEW CAT 323D3 EXCAVATORS
1x NEW CAT 320D3 EXCAVATOR
(PIPED FOR HAMMER)



1x2022 Volvo EC210 Exc(Only 1800Hrs)
1x2021 CAT 323D3 Exc (Only 2200 Hrs)
1x2021 CAT 320D3 Exc (Only 2500 Hrs)



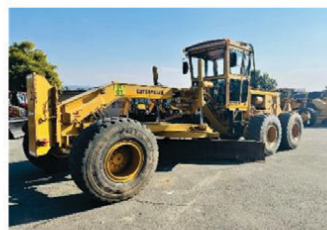
1x 2005 CAT 16H MOTOR GRADER
REFURBISHED (ENGINE REBUILT)



1x1983 CAT 16G
MOTOR GRADER
REFURBISHED



1x 2008/01/97 CAT 140H
MOTOR GRADERS
WITH RIPPERS



1x 1984 CAT 14G MOTOR GRADER
2x 1994/87 CAT 140G MOTOR GRADERS
WITH RIPPERS



3x NEW 2023 CASE 770FX/EX
4X4 MAGNUM TLB's
2x NEW 2023 CASE 851FX 4X4
MAGNUM TLB'S WITH 6IN1 BUCKETS



1x 1997 CATERPILLAR 428C
4X2 TLB



2x NEW 2022 MANITOU MBL745 HT S
4X4 TLB



1x 2008 CAT 824H WHEEL DOZER
REFURBISHED



1x 1996 CAT D10R
CRAWLER DOZER-FULL REBUILT
1x 2016 KOMATSU D375-6
CRAWLER DOZER (IN WORKSHOP)



1x 2011 CAT D8R CRAWLER DOZER
FULL REBUILT



1x 2014 KOMATSU D65EX-16
CRAWLER DOZER
REFURBISHED



1x 2009 KOMATSU D375-8
CRAWLER DOZER
(EXCELLENT CONDITION)

Standard Bank **ABSA**

NEDBANK

WesBank



VEsales

T/A Associated Equipment

Plot 92 Indaba Lane off Beyers Naude, Rietfontein, Roodepoort, South Africa



Duncan: +27 (0) 83 626 5588
Anton: +27 (0) 82 923 5397
Jaap: +27 (0) 82 892 1327
Lorraine: +27 (0) 76 021 4344
Office: +27 (0) 11 801 4911

vendels@mweb.co.za
associatedloraine@xnet.co.za
ves@xnet.co.za



1X 2008 KOMATSU WA430-5
FRONT END LOADER
REFURBISHED



1X NEW 2022 SDLG L956F
FRONT END LOADER



2X 2014 CAT 986H FRONT END
LOADERS-REFURBISHED
1X 2000 CAT 938G FRONT
END LOADER



1x 2016 LUIGONG ZL50 CNX
FRONT END LOADER
1x 2016 RONDEBULT ZL50
FRONT END LOADER



1x 2005 HAMM 3414 SMOOTH
DRUM ROLLER



1x 2010 HAMM 3411
SMOOTH DRUM ROLLER



1x 2013 POWERSTAR 2642
TWINSTEER 18000LT WATER TANKER
1x MERCEDES AXOR 18000LT
TANKER



1x 2007 CAT PF300C 7 WHEEL PTR
1x 2003 HAMM GRW18 PTR



1X 2012 CAT 740 6X6
ARTICULATED DUMP TRUCKS
REFURBISHED



1x 2008 BELL B50D WATER BOWSER
40 000LT-REFURBISHED



3X 2018 DOOSAN DA40 6X6
ARTICULATED DUMP TRUCKS



1x 2012 VOLVO A35F 6X6
ARTICULATED DUMP TRUCK



1x 2019 JCB 540-140 Telehandler
1x 2018 JCB 540-140 Telehandler
1x 2017 JCB 540-140 Telehandler
1x 2017 JCB 540-170 Telehandler



1X 2009 DIECI LH 679
READY MIX
CONCRETE TRUCK



1x 2009 DYNAPAC DF145P PAVER
1x 2008 CAT AP600 ASPHALT PAVER
1x 2003 VOGELE 1804 6-69 PAVER
1x 1997 VOGELE 1800 6-68 PAVER



2x ETNYRE K CHIP SPREADERS
4X2 FIXED HOPPER
1X 2006 ETNYRE K CHIP SPREADER
4X2 FIXED HOPPER



1X 2004 TEREX TA30
ARTICULATED DUMP TRUCK



1X 2008 CAT 246C
SKID STEER LOADER
(WITH BROOM & MILLING
ATTACHMENT OPTION)



1X 2014 WACKER NEUSON RD12A
SIT ON ROLLER



20.5 X 25 L3 , 23.5 X25L3, 17.5X25
ROCK GRIP L4 ,17.5X25 L3,
1400X24L3,
ALL NEW TYRES

GPS CO-ORDINATES: S26°3'56.343 - E37°52'37.453 • www.vendequipmentsales.co.za



AFRICA'S LEADING EARTHMOVING EQUIPMENT & PARTS DEALER

www.blcplant.com ☎ +27 11 555 2000 ✉ info@blcplant.com

PLANT

PARTS

RENTAL

OVER 600 MACHINES IN STOCK



MOTOR GRADER
CAT 140H; 140K; 14H



WHEEL LOADER
CAT 950H; 966H/L; 962H; 980H; 992G/K



DOZER
CAT D6R/T; D7R; D8R; D9T; D10T; D11T



EXCAVATOR CAT 320D; 323D; 329D;
336D; 345D; 349D; 374D/F; 390D/F

CAT 740'S



MAHINDRA MAYHEM

BRAND NEW MAHINDRA
VX90 4X4
TLB'S

with
AIRCON



**LARGEST STOCK OF
PARTS IN THE
SOUTHERN HEMISPHERE**

Service exchange units available.

6 MONTHS WARRANTY
on refurbished components.

View all our available
stock on our website
www.blcplant.com



BLC Plant purchases earthmoving equipment for stock, rebuilds it as required in the fully equipped on-site workshops and then sells it to users in various industries. We focus on delivering products which meet customer specifications, offer buyers a viable alternative to new equipment and provide excellent after sales service and support.

PLANT

View all our available stock on our website
www.blcplant.co.za

PLANT - STOCK READY TO GO



CAT D11T
2011



CAT 966H
2013



TADANO
TR250M-4 CRANE



TADANO
TR250-5 CRANE



CAT MOTOR GRADER
120H



INGERSOLL-RAND ROLLERPACT
27T



BOMAG BW212 PAD FOOT ROLLER
2013



MAHINDRA VX90 4X4
2021

TRUCKS - STOCK READY TO GO



MERCEDES AXOR 2628 14000L WATER TANKER
(2008)



MERC-BENZ ACTROS 3331 ROCK BIN
(2008) X 3



VOLVO 18000L WATER TANKER
(2012) 5 AVAILABLE



MERCEDES ACTROS 3331 TIPPER TRUCK
(2007)

Call us now

+27 (0)11 555 2000

or visit

www.blcplant.com

for our latest stock.



Largest stock of parts in the southern hemisphere. Service exchange units available.

PARTS

www.blcplant.com

+27 11 555 2000

info@blcplant.com

Corner Wynberg Road and 2nd Avenue, Kew



6 MONTHS WARRANTY on refurbished components



CATERPILLAR
Dozer Engines



CATERPILLAR
Dozer Final Drives



CATERPILLAR
Grader Transmissions



CATERPILLAR
Loader Axles



CATERPILLAR
Loader Transmissions



CATERPILLAR
Grader Axles



CATERPILLAR
Transfer Box



CATERPILLAR
Off Highway Transmissions

Call us now +27 (0)11 555 2000 or visit www.blcplant.com for our latest stock.



**USED+
REBUILT**

MACHINERY +COMPONENTS

OFFERINGS

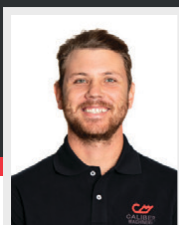
- ➔ Used Machines
- ➔ Refurbished Machines
- ➔ Rebuilt Machines
- ➔ Parts & Components
- ➔ Large Inventory of Equipment to Rent

MACHINES

- ➔ Dozers
- ➔ Graders
- ➔ Articulated Dump Trucks
- ➔ Rigid Trucks
- ➔ Loaders
- ➔ Water and Diesel Bowsers

COMPONENTS

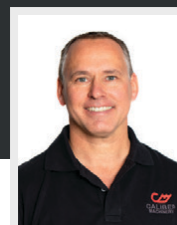
- ➔ Engines
- ➔ Final Drives
- ➔ Differentials
- ➔ Transmissions
- ➔ Dropboxes
- ➔ Track Frames



JC VAN DAM
+27 76 100 9386
jc@calibermachinery.co.za



STIVEN SETHABELA
+27 60 889 5451
stiven@calibermachinery.co.za



ARNO OLIVIER
+27 72 479 9294
arno@calibermachinery.co.za



KOSIE MALAN
+27 82 326 4578
kosie@calibermachinery.co.za

CONTACT US

FOLLOW US



T +27 12 940 0688
E info@calibermachinery.co.za

www.calibermachinery.co.za

1618 Sterkfontein Ave, Doornkloof, Centurion, Gauteng, South Africa, 0181



EarthComp [®]

WE BUY EARTHMOVING[®]
Earthmoving Buying and Selling



CONSTRUCTION & MINING

TANKER EQUIPMENT

CIVIL EQUIPMENT

TRUCK & TRAILERS



**32 x Side Tippers Trailers Available
29 x AFRIT TRAILERS
3 X TRAILMAXTRAILERS**



**4 x Trucks Available
2020 VOLVO FH440 TRUCKS**



**6 x Globetrotter Trucks Available
2020 VOLVO FH440 GLOBETROTTER TRUCKS**



**8 x Dozers Available
2018 CAT D8R DOZER**



**5 x Graders Available
2013 BELL 770G GRADER**



**8 x Dozers Available
2013 CAT D6R DOZER**



**12 x Excavators Available
2018 VOLVO EC750DL EXCAVATOR**



**12 x Excavators Available
2015 CAT 320D 2L EXCAVATOR**



**12x Excavators Available
2019 HITACHI ZX470 LCR-5G EXCAVATOR**



**6 x Tankers Available
2008 VOLVO A30E ADT WATER BOWSER**



**2 x TLB'S Available
2014 CAT 428F 4x4 TLB**



**2 x ADT'S Available
2013 CAT 730 ADT 6x6**

**Kobus - 076 780 2463
Tertius - 083 628 7773
marketing@earthcomp.co.za**

**www.earthcomp.co.za
19 November Street
Middelburg, Mpumalanga 1050**

BRAKECORE SUPPLY CO.

Tel: +27 (0)17 819 3412 | 5 Oosthuise str, Ermelo, 2350, South Africa
jaco@brakecore.co.za | shane@brakecore.co.za | gerrard@brakecore.co.za

Performance Through Quality

Industrial Clutches, Brakes & Engine-driven PTO Pumps

WPT POWER
® 



Wet Brake Parts, Wheel Stations & Centre Portions



Ground Engaging Tools & Undercarriage



40 Years Anniversary

WET BRAKES • UNDERCARRIAGE • INDUSTRIAL BRAKES • AIRBRAKES • RADIATORS • BRAKES • CLUTCHES

MAYFAIR GEARBOX[®] NATIONWIDE



MAXIMIZE EFFICIENCY, MINIMIZE DOWNTIME Mayfair Gearbox's Off-Highway Machinery Restoration Specialists!



Unlocking the Power of Industry: Mayfair Gearbox, the Trailblazing Force in Off-Highway Machinery Repair and Remanufacturing. Welcome to a world where excellence and innovation converge seamlessly, propelled by the largest black-owned industry business in history.

Operating across multiple branches in South Africa, Botswana, and Namibia, their expertise spans borders, delivering unparalleled services. Harnessing the dynamic capabilities of dyno testing on both Manual and Auto Off-Highway Machines, Mayfair Gearbox ensures peak performance and reliability. With a relentless commitment to quality-driven company ethics, their operations are Allison Approved, SABS, ISO 9001, and SANS 10279 Accredited.

Coupled with an extensive warranty and round-the-clock on-site assistance, Mayfair Gearbox empowers you to conquer any challenge that comes your way.



UNITS FOR SALE



CAT D8 DOZER ENGINE
For R150 000



CAT D8 TRANSMISSION
For R149 870



MANITOU FORKLIFT TRANSMISSION
For R20 000



VOLVO L120 TRANSMISSION
For R88 000

Gear Up for Success. Contact Mayfair Gearbox Now!



www.mayfairgearbox.co.za



+2711 493 8687



Tyron Knott: 079 495 7224



tyron@mfgb.co.za

Teeth Boyz

IT'S TIME TO **CHANGE SAVE**

SUITABLE FOR MOST MAJOR BRANDS AVAILABLE IN THE SOUTH AFRICAN MARKET

R55.99/KG

GENERAL PURPOSE (YELLOW)



R60.99/KG

GERENAL MINING (ORANGE)



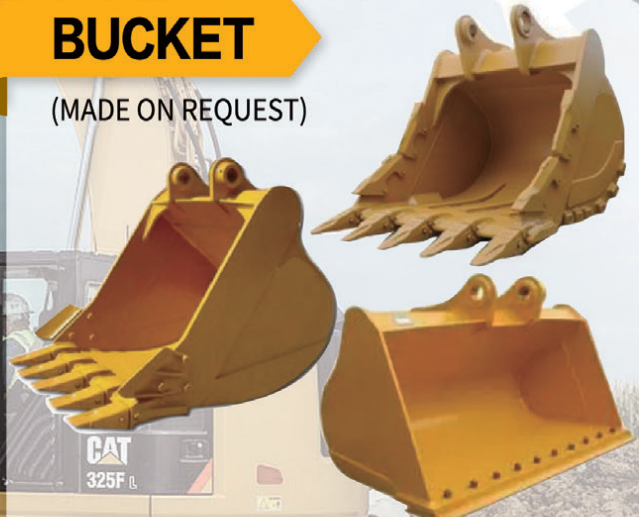
R70.99/KG

HEAVEY DUTY (BLACK)



BUCKET

(MADE ON REQUEST)



REMARK: THE PRICE DOESN'T INCLUDE VAT EX JNB WAREHOUSE ONLY

EASTERN CAPE | ANDREW: 083-674-5414

KWAZULU NATAL | ROB: 076-583-9599

MPUMALANGA | QUINTES: 082-497-1598

GAUTENG | DAVID: 079-498-5417, JASON: 062-055-7910

WEST/NORTHERN CAPE | CRAIG: 076-491-6951

NORTH WEST/LIMPOPO | TREVOR: 082-829-6956

FREE STATE | RYAN: 071-473-5159

NAMIBIA | EMILE: 00264-81-325-0189

www.inmine.co.za

CAT D10T STRIPPING FOR PARTS



**RECONDITIONED
ENGINE CORE
PARTS**



**WIDE RANGE OF
RECONDITIONED
COMPONENTS**



**D9,D10,D11
TRACK GROUPS AND
ROLLERS AVAILABLE**

OFFICE: +27 13 691 1052

GOOD RUNNER & USED ENGINES



Plot 26 Naauwpoort, Benicon Park,
Witbank 1036 Mpumalanga, South Africa



HITACHI 870-3 FOR SALE



RECONDITIONED & USED TRACK FRAMES AVAILABLE



VARIOUS DUMP TRUCK BOWLS



GOOD USED COMPONENTS

Hennie Nelson
+27 82 414 1393
hennie@inmine.co.za

Francois De Klerk
+27 66 281 9753
francois@inmine.co.za

Darius Moolman
+27 66 308 7886
darius@inmine.co.za



Insist on Genuine Turbochargers!

TurboDirect S.A the largest OEM turbocharger distributor in Africa - we supply brand new Genuine Brand turbochargers, offer repairs using brand new Genuine parts, build service exchange turbochargers, and provide the first and only certified/accredited turbocharger specific training course on the market.

TurboDirect S.A - the true turbocharger experts



Cut out the Middleman - buy Direct from the Importers!

Scan to visit our
Store now



| 011 392 5195

| www.turbodirect.co.za/store

| Unit A03 corner Airbus & Agusta Road, Denel
Kempton Campus Bonaero Park

Garrett
ADVANCING MOTION

MITSUBISHI
TURBOCHARGER

IHI TURBO

BorgWarner

POWER TRANSMISSION TECHNOLOGY

DRIVELINE COMPONENTS AND SPARE PARTS FOR BELL



SCAN QR CODE
TO VISIT
OUR WEB
CATALOGUE



KEEPING YOUR PLANT IN MOTION

info@pttech.co.za

www.pttech.co.za

tel: +27 11 022 8570

*All photos, descriptions, part numbers, symbols and manufacture names are for reference purposes only.

THE POWER OF PRODUCTIVITY



ULTIMATE EXCHANGE COMPONENTS

Short lead times, Customer service, Cost savings, Quality workmanship Combined, enable us to be extremely qualified to handle your Repairs and Manufacturing needs.



**Certified SEM
Dealer & Agent**



ALL NAMES USED FOR ILLUSTRATION PURPOSES ONLY



HYDRAULIC CYLINDERS

Manufacturing & Repair of ALL Hydraulic cylinders are done to OEM specification. Various Service Exchange units available for Most Brands.

MACHINE & COMPONENT REBUILDS

All Component repairs done in house using OEM parts
Partial & Full "0" Hour Rebuilds on ALL Earthmoving equipment
Final Drives, Wheel Stations, Drop Boxes, Engines, Transmissions

FIELD SERVICE

Mobile Line-Boring, Boilermakers
Strip & Assemble Assistance



ENGINEERING SERVICES

Repairing & Manufacturing Buckets
Repairs to Dozer Blades, Track Frames,
Equalizer Bars, Repairs to Booms,
Sticks, Bowls & Track Frames

PARTS SUPPLY & PROCUREMENT

Supply of OEM & Aftermarket parts
Purchasing Equipment & stripping for
parts or Rebuild

REBUILDS

Component Repairs & Supply
Engine Rebuilds & Supply
Midlife & Zero Hour Rebuilds



Clifford +27 78 854 7696 / clifford@uecpty.co.za | Cois +27 64 591 2591 / cois@uecpty.co.za



ENGINE SPARES



**LINER KITS, GASKET KITS,
VALVES & GUIDES, WATER PUMPS,
OIL PUMPS, CRANK & CAM SHAFTS,
ENGINE BEARINGS AND BUSHINGS**



MITSUBISHI

KOMATSU

DOOSAN

NISSAN

ISUZU

YANMAR



KAWASAKI PUMPS
NEW AND RECON

FINAL DRIVES

**20 & 30 TON EXCAVATOR
TM40 & TM60 FINAL DRIVE PARTS
& COMPLETE UNITS**



KAWASAKI ROTATING GROUPS

**K3V AND K5V SERIES
INNER PARTS
ROTATING GROUPS AND SEAL KITS**

UNDERCARRIAGE



TRACK LINKS



**TRACK PLATES
BOLTS & NUTS**



SPROCKETS



IDLERS



**TRACK & CARRIER
ROLLERS**

CONTACT US:

TEL: 011 396 1081

SALES2@SHINLITRADING.CO.ZA

SALES4@SHINLITRADING.CO.ZA

SALES5@SHINLITRADING.CO.ZA

ADDRESS:

67 HIGH ROAD, BREDELL A/H, KEMPTON PARK



GOOD USED EARTHMOVING PARTS AND EQUIPMENT

STM

MINING EQUIPMENT PTY(LTD)

Tel: (011)894-6192 / (011)894-3377

Fax: (011)894 7914

barney@stmmining.co.za

donovan@stmmining.co.za

Office Hrs: Mon-Fri 07h00-17h00



CAT 930
R380 000 +VAT



275-5
NO TRANSMISSION STRIPPING



D375-6 MACHINE
STRIPPING



KVA435 D9A
VOLVO ENGINE



KVA 450-500 C18
CAT ENGINE



D375-5
STRIPPING FOR PARTS



FULLY REBUILT 140G GRADER
WITH WARRANTY



CAT 740B1P
C15 ACERT



CAT D10T
TRANSMISSION



140H GRADER
SERIAL *9TN00567*



740 ADT DUMPERS X 2
STRIPPING FOR PARTS

GOOD USED EARTHMOVING PARTS AND EQUIPMENT

STM

MINING EQUIPMENT PTY(LTD)

Tel: (011)894-6192 / (011)894-3377
 Fax: (011)894 7914
barney@stmmining.co.za
donovan@stmmining.co.za
 Office Hrs: Mon-Fri 07h00-17h00



MULTIPLE TRACK LINK ASSEMBLY'S



MULTIPLE BUCKETS



MULTIPLE BOOMS & STICKS



MULTIPLE H FRAMES



MULTIPLE CYLINDERS



MULTIPLE CABS



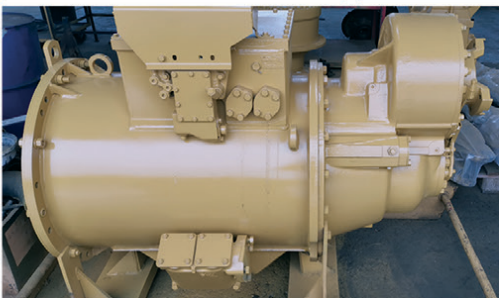
**Recon C11
HEAD AND CRANK**



REMAN SUB / CAT C9



**785C
TORQUE CONVERTER**



RECON 789C TRANSMISSION



**777D
TORQUE CONVERTER**



**D10T RECON
SERVICE EXCHANGE FINAL DRIVES**



**CAT 140G
TRANS RECON
S/EXCHANGE**

**STRIPPED
ENGINES**

3304/6
3204
3126
3406
3408
3412
3508
3512
3516

C6.4
C7
C9
C11
C13
C15
C18
C27
C32

MACHINES

EXCAVATORS

225
317B
318B
320B
325B
330B
320D
323D
330D

LOADERS

920
930
936G
938G
950A/H
966G
980F/G
988B

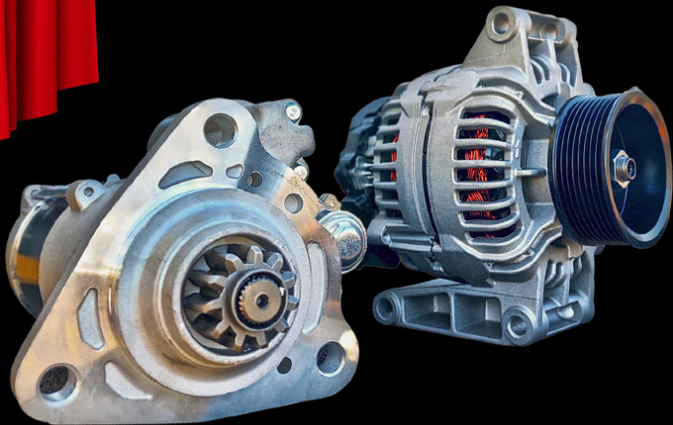
www.stmmining.co.za

PO Box 6456, Dunswart 1508, 40 Michelson RD. Westwood, Boksburg

NEW PARTS LAUNCH

BETA
Bell Trusted Alternative

BELL EQUIPMENT TRUSTED ALTERNATIVE PARTS
A GAME CHANGER FOR SOUTH AFRICA'S PARTS INDUSTRY



WHAT? New range of parts for mature machines; great value, quality tested and approved by Bell to OEM specs.

WHY? Save money, maintain machines performance and uptime without the risk that comes with imitation parts.

6 Months / 1 000 hours warranty

BELL Aftermarket Support Product

bellparts@bellequipment.com

BETA
Bell Trusted Alternative

TRUST **TEMPO ATTACHMENTS** TO MANUFACTURE YOUR
HIGH QUALITY MINING AND EARTH MOVING ATTACHMENTS



**GROUND
BREAKING
TECHNOLOGY**

TEMPO
ATTACHMENTS

Mark Swanepoel P +27 82 825 6966 marks@ctcplant.co.za



CONTACT US TO SERVICE YOUR HARDWORKING ATTACHMENTS

P +27 21 386 4190/1/2/3/4 | F +27 21 386 4195
www.tempattachments.com



Cnr. Michigan & Manchester Streets, Airport Industria, Cape Town, South Africa

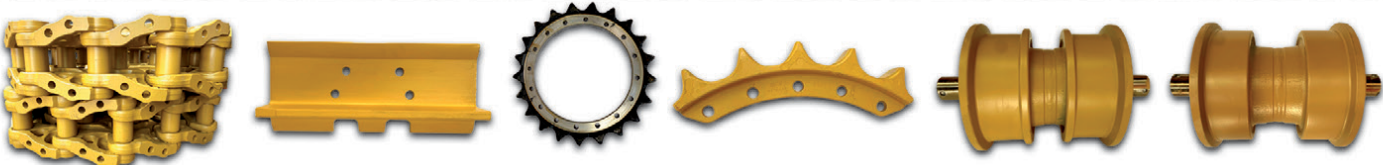
ON THE RIGHT TRACK WITH

CEN TRAX
Since 1974
www.centraxsa.co.za

Head Office: Tel: (011) 392 5055
(011) 392 5056
Fax: (011) 392 3091
Durban Branch: Tel: 086 123 6872
Fax: 086 529 4683
Steve: 083 613 0664

Merry Christmas

EXPERTS IN UNDERCARRIAGE & WEAR PARTS



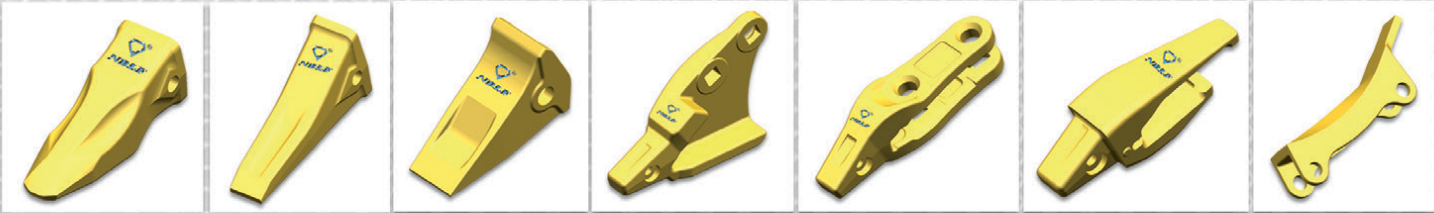
**EXPERIENCE THE WORLD CLASS
CENTRAX UNDERCARRIAGE
CONVERSION & REPAIR PROCESS**

**YOUR ONE STOP
UNDERCARRIAGE &
WEAR PARTS SHOP**



- **IDLER REBUILD FACILITY**
- **TRACK WORKSHOP**
- **UNDERCARRIAGE**
- **GROUND ENGAGING TOOLS**

CENTRAX would like to thank all of our customers for their tremendous support throughout 2023.
We wish you and your family's a blessed Christmas and New Year and we look forward to trading with you in 2024



Manufacturers names, numbers and descriptions are used for reference purposes only & is not implied that any parts listed is the product of these manufacturers.

ON THE RIGHT TRACK WITH

CENTRAX

Since 1974

www.centraxsa.co.za

Head Office:

Tel: (011) 392 5055
(011) 392 5056

Fax: (011) 392 3091

Durban Branch:

Tel: 086 123 6872

Fax: 086 529 4683

Steve:

083 613 0664



Merry Christmas

EXPERIENCE OUR WORLD CLASS IDLER REBUILD CENTRE

EXPERTS IN UNDERCARRIAGE & WEAR PARTS

"YOU CAN WITH CENTRAX"

www.centraxsa.co.za

Manufacturers names, numbers and descriptions are used for reference purposes only & is not implied that any parts listed is the product of these manufacturers.

NEW SALES METHOD

★ WE ARE SELLING THE MOILS PER KG ★



Hammer Brand	Type Model	Weight (kg)	Moil Size (mm)	Price (Rand/Kg)
AJCE	AJCE810M	142	140 *1300	R 7X.99
	AJCE 1000M	190	155*1350	
EDT	EDT2000	122	135*1200	
Everdigm	EHB20	105	125*1200	
	EHB25	128	135*1250	
	EHB30	165	150*1300	
MWH	MWH25	142	140 *1300	
	MWH30	190	155*1350	
POQUTEC	PBV300	175	150*1400	
Soosan	SB81	142	140 *1300	
	SB121	190	155*1350	
DNA	180V	95	125*1100	R 8X.99
	220V	122	135*1200	
Furukawa	F22	122	135*1200	
	F27	136	140*1250	
	F35	165	150*1300	
	FXJ225	122	135*1200	
	FXJ275	136	140*1250	
	FXJ375	193	155*1450	
	HB20G	122	135*1200	
	HB30G	172	150*1350	
KOMAC	TOR26	130	140*1200	
	TOR36	155	145*1300	
Epiroc	MB1700	140	140*1300	R 1XX.99
	HB2000	135	145*1200	
	HB2500	170	155*1300	
	HB3100	235	165*1500	
Montabert	XL1700	135	137*1300	
	V32 standard	90	122*1100	
	V32 XL	145	122*1600	
	V2500	195	160*1400	
	V3500	250	175*1560	
Rammer	V4500	330	190*1700	
	E68	98	130*1100	
G130	G130	372	203*1500	
Epiroc	SB202	21	65*900	On Request
	SB302	36	80*1000	
	SB452	55	95*1100	
	MB1200	81	120*1000	
Everdigm	EHB05	20	68*700	
	EHB13	65	105*1050	
Montabert	SC22	15	82*580	
	SC36	25	77&710	
POQUTEC	PBV30	8	53*500	
Soosan	SB40	18	68*680	
	SB43	25	75*750	

CONTACT US

<https://www.msmoil.co.za/>



**THE EXPERTS
IN EARTHMOVING
MACHINERY COMPONENTS**

**POWERING
PERFORMANCE
ONE PART
AT A TIME.**

We carry an extensive range of
**New, Used &
Reconditioned
Undercarriage Components**

Visit our website for available stock

WE STOCK THE FOLLOWING COMPONENTS

- COMPLETE TRACK FRAMES
- TRACK SPRINGS & ADJUSTERS
- LINK ASSEMBLIES, IDLERS,
- ROLLERS, GROUSER PLATES
- SPROCKETS and more...

**Over 250 Machines
in Stock !!**

New stock added every month.



WE STOCK USED & REFURBISHED PARTS FOR THE FOLLOWING BRANDS

BELL

CASE

CAT®

DOOSAN

HITACHI

JCB

JOHN DEERE

KATO

Kawasaki

KOBELCO

KOMATSU

LIEBHERR

mitsubishi

SUMITOMO

TEREX

VOLVO

Office: +27 82 691 9524 • Adriaan: +27 71 234 6234 • Email: admin@duraparts.co.za
223 Denne Rd. Witpoort, Brakpan 1540

www.duraparts.co.za

Celebrating **32 Years**

TRAXGLOBAL

Supplying Quality Products Since 1991

MARINE - MINING - POWER GENERATION

TraxGlobal (Pty) Ltd. Company Reg No : 2022/544621/07



GENUINE PARTS
KOMATSU



TEREX



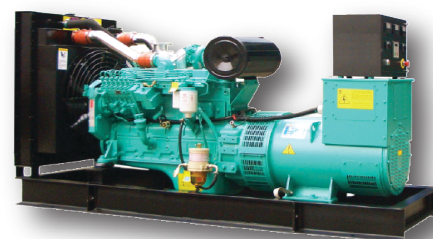
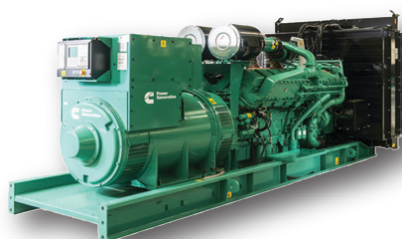
**VOLVO
PENTA**

FW MURPHY
PRODUCTION CONTROLS



2023

WORLDWIDE PARTS & EQUIPMENT SOURCING SPECIALISTS



We offer solutions for the complete life cycle of CAT & Cummins products across Mining, Construction, Rail, Agriculture, Power Generation, Marine, Oil and Gas

Our comprehensive supply range includes,

A One Stop Shop For All Your CAT Needs.

**CAT Generators
New CAT Engines
Genuine Spare Parts**

We Cater To All CAT Engine Models:

CAT 3412 : 500KW - 800KW

CAT 3512 : 890KW - 1750KW

CAT 3516 : 1450KW - 3000KW

CAT C15 : 350KW - 500KW

CAT C18 : 450KW - 750KW

CAT C32 : 830KW - 1250KW

A One Stop Shop For All Your Cummins Needs.

**Cummins Generators
New Cummins Engines
Genuine Spare Parts**

We Cater To All Cummins Engine Models:

**S3.8, X1.3/2.7/3.6, 4B3.3/3.9, 6B5.9,
6C8.3/6L8.9, ISBE, ISLE, ISM/QSM/M11,
K19, K38, K50, N14/QSN14, NT855, QSB
4.5/5.9/6.7/7, QSF4.5, QSK19, QSK23,
QSK38, QSK45, QSK50, QSK60, QSK78,
QSK95, QSV91, QST30, V28/V1710,
QSX15, QSL, QSJ2.4/5.9, QSZ13, L10, QSC,
ISX.**



Contact Details : Sales : +27 (0)28 273 8283 / info@traxglobal.co.za
Eddie : +27 (0)82 697 0534 / parts@traxglobal.co.za
Steve : +27 (0)82 954 6253 / steve@traxglobal.co.za
Bev : +27 (0)83 505 8955 / bev@traxglobal.co.za

Branches in :
Johannesburg & Cape Town

www.traxglobal.co.za



Hurricane Diesel specialises
in the supply of Affordable,
High Quality diesel injector test benches
and related tools and accessories



DIESEL EQUIPMENT, PARTS & ACCESSORIES

Tel: 015 297 2444 / 010 597 7843
Email: info@hurricanediesel.co.za



www.huricanediesel.co.za



GFA

Gears for Africa

145 Lamp Road, Wadeville Germiston

**OUR QUALITY COMPARES 100%
TO ANY OEM SPARE
MANUFACTURES**

MANUFACTURE OF SPIRAL BEVEL GEARS NOW AVAILABLE



Gears for Africa - Petrel International products include all types of gears, sprockets, splines and related product for industrial and heavy duty equipment and practically all applications related to power drive systems:

**Bevel Gears • Spur Gears • Worm Gears • Helical & Internal Helical Gears
Crown Gears • Internal & External Splines.**



PETREL
INTERNATIONAL
ESTD 1947

Carl - 066 020 6338 | carl@petrelequipment.com

Tel: 021 577 1032

Address: 97 Neil Hare Rd, Atlantis, Cape Town

Petrel International Official Distributors of : Braden/Paccar winch

BRADEN CARCO Gearmatic.

PACCAR WINCH

**CROWN WHEEL AND PINION, PLANETARY, SUN AND RING GEARS
FINAL DRIVE GEARS, DIFF HOUSINGS SPIDER CROSS KITS, SPIRAL BEVEL GEARS**

**FOR THE MINING, RAIL, HEAVY EARTH MOVING, BUILDING,
AND AGRICULTURAL INDUSTRIES**



**083 657 0522 | carl@gearsforafrica.co.za
www.gearsforafrica.co.za**

Tel: 011 824 2017
Fax: 011 420 3314

GOOD USED EARTHMOVING PARTS AND EQUIPMENT

STM

MINING EQUIPMENT PTY(LTD)

Tel: (011)894-6192 / (011)894-3377

Fax: (011)894 7914

barney@stmmining.co.za

donovan@stmmining.co.za

Office Hrs: Mon-Fri 07h00-17h00

OUR PRODUCTS & SERVICES

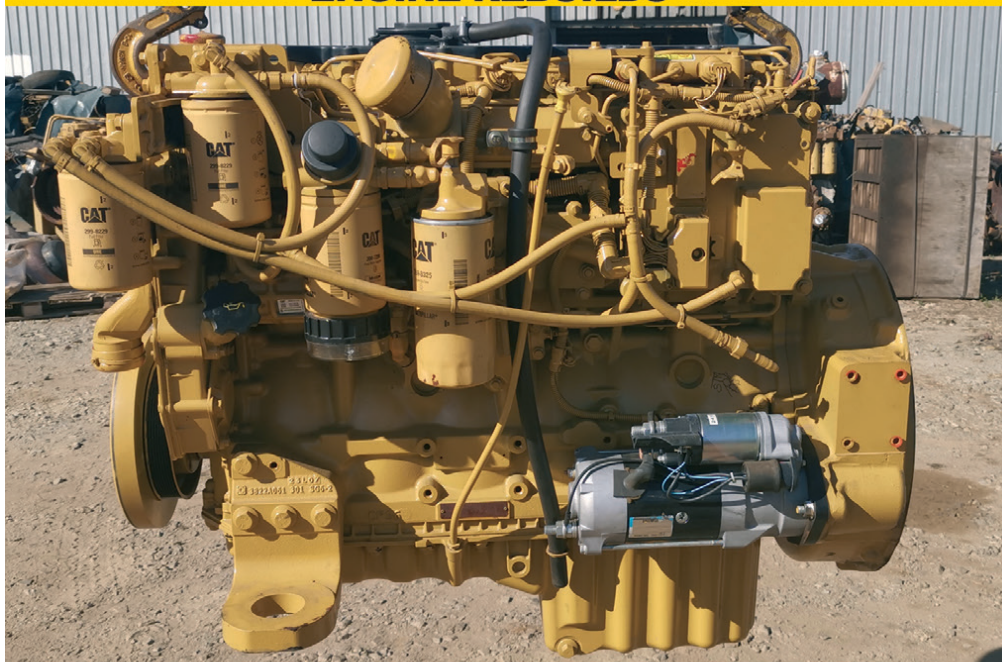
We supply second hand machines and good used parts for most makes of Earthmoving Equipment ie: Cat, Komatsu.

We buy second hand machines to strip for components and parts, dead or alive to keep in stock for customers.

We have a repair shop where we do components and Repair machines for Customers.



ENGINE REBUILDS



MACHINE REBUILDS



Before



After

www.stmmining.co.za

PO Box 6456, Dunswart 1508, 40 Michelson RD. Westwood, Boksburg

www.espa.co.za

ESP THE PROVEN ALTERNATIVE



MULTI-BRAND parts suitable for
CATERPILLAR®
EARTHMOVING machinery



BENEFIT FROM OUR 9 MONTHS WARRANTY PERIOD ON NEW PARTS

ESP Johannesburg
Tel: (011) 398-1700

ESP Pretoria
Tel: (012) 804-6706

ESP Middelburg
Tel: (013) 246-2520

ESP Pinetown
Tel: (031) 705-4200

ESP Cape Town
Tel: (021) 945-1030

ESP Gqeberha
Tel: (041) 484-4575

ESP Bloemfontein
Tel: (051) 432-4501

ESP Kimberley
Tel: (053) 831-8349

ISO 9001 **Certified**

Manufacturers' names, numbers, symbols and descriptions are used for reference purposes only and it is not implied that any part listed is the product of the manufacturers.

www.espa.co.za

ESP THE PROVEN ALTERNATIVE



ESP Gqeberha
Tel: (041) 484-4575

BENEFIT FROM OUR 9 MONTHS WARRANTY PERIOD ON NEW PARTS

ESP Johannesburg
Tel: (011) 398-1700

ESP Pretoria
Tel: (012) 804-6706

ESP Middelburg
Tel: (013) 246-2520

ESP Pinetown
Tel: (031) 705-4200

ESP Cape Town
Tel: (021) 945-1030

ESP Gqeberha
Tel: (041) 484-4575

ESP Bloemfontein
Tel: (051) 432-4501

ESP Kimberley
Tel: (053) 831-8349

ISO 9001 **Certified**

Manufacturers' names, numbers, symbols and descriptions are used for reference purposes only and it is not implied that any part listed is the product of the manufacturers.

www.espa.co.za

ESP THE PROVEN ALTERNATIVE



Multi-brand parts suitable
for **CATERPILLAR**
earthmoving machinery



BENEFIT FROM OUR 9 MONTHS WARRANTY PERIOD ON NEW PARTS

ESP Johannesburg
Tel: (011) 398-1700

ESP Pretoria
Tel: (012) 804-6706

ESP Middelburg
Tel: (013) 246-2520

ESP Pinetown
Tel: (031) 705-4200

ESP Cape Town
Tel: (021) 945-1030

ESP Gqeberha
Tel: (041) 484-4575

ESP Bloemfontein
Tel: (051) 432-4501

ESP Kimberley
Tel: (053) 831-8349

ISO 9001 Certified

Manufacturers' names, numbers, symbols and descriptions are used for reference purposes only and it is not implied that any part listed is the product of the manufacturers.

www.espa.co.za

ESP THE PROVEN ALTERNATIVE



engine parts
suitable for CATERPILLAR



3046, 3054, 3056, 3064, 3066, 3114, 3116, 3126, 3176, 3196, 3204, 3208, 3304, 3306, 3406, 3408, 3412, D342, D343, C4.4, C6.6, C7, C9, C10, C11, C12, C13, C15, C16, C18, C27, C32

BENEFIT FROM OUR 9 MONTHS WARRANTY PERIOD ON NEW PARTS

ESP Johannesburg
Tel: (011) 398-1700

ESP Pretoria
Tel: (012) 804-6706

ESP Middelburg
Tel: (013) 246-2520

ESP Pinetown
Tel: (031) 705-4200

ESP Cape Town
Tel: (021) 945-1030

ESP Gqeberha
Tel: (041) 484-4575

ESP Bloemfontein
Tel: (051) 432-4501

ESP Kimberley
Tel: (053) 831-8349

ISO 9001 Certified

Manufacturers' names, numbers, symbols and descriptions are used for reference purposes only and it is not implied that any part listed is the product of the manufacturers.

INDUSTRIAL PLANT SOLUTIONS

D8R COMPONENT PROMOTION

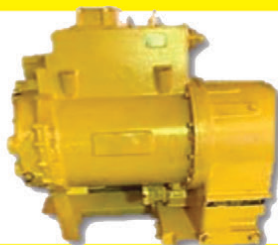


ENGINE



Full Recon With
Dyno Report

TRANSMISSION



Full Recon

LongBLOCK



Full Recon - CAT
Spec 20R4277

PUMPS REMAN



Transmission,
Hydraulic & Steer

TORQ CONV



D8T Torque
Convertor

DIFF STEER MODULE

For Spares

TORQ CONV



Full CAT
Reman

FINAL DRIVES



Full Recon

TRACKS



Good Used

AVAILABLE ON THE FLOOR NOW!

New, used and reconditioned components - all makes.

If it's from your machine, we'll find a replacement!!

Contact Us:

✉: hello@ipsglobal.net

📘: facebook.com/IndustrialPlantSolutions



WhatsApp Message
+27 (0)76 034 2877

Inspections & Assessments Also Done



LHD booms fitted with Vesconite Hilube bushings

WORLD'S LARGEST COPPER PRODUCER REPORTS REMARKABLE SUCCESS WITH NEW VESCONITE HILUBE BUSHINGS

The leading global copper producer has achieved exceptional results through the implementation of Vesconite Hilube wear-resistant bushings on load haul dump machines (LHDs).

Departing from traditional bronze bushings, the mining company's adoption of Vesconite Hilube on Sandvik and Caterpillar LHD booms has led to an unprecedented increase in bushing lifespan, exceeding their initial expectations.

Previously, the company relied on bronze bushings and had a mere 1.5 months of operational life.

Vesconite Hilube bushings were introduced in December 2022, with an initial goal of extending bushing life to three months. The remarkable reality, however, has far surpassed this objective, as the Vesconite Hilube bushings have endured for an impressive nine months and counting.

This transformation has been particularly significant, with the Vesconite Hilube bushings fitted to 30 LHD booms in 2023, and only one instance of a boom fitted with Vesconite Hilube bushings requiring repairs. Notably, the company's repairer has reported that the bronze bushings occasionally suffered from cracking, making it clear that this is not a recurring issue with Vesconite Hilube bushings.

The copper producer has expressed its satisfaction with the results obtained and is actively exploring the expansion of Vesconite Hilube bushings for other applications. These include trials on mining jumbos and larger LHD loaders, as well as applications for bushings associated with rear shaft oscillating movement.

Vesconite Bearings' Argentine distributor, Vesarg, plays a pivotal role in supplying the mine with Vesconite Hilube bushing stock. During a visit to the Chilean site, close to Santiago, where booms were being fitted with Vesconite Hilube, Leandro Panzini of Vesarg was briefed on the impressive outcomes of the Vesconite Hilube bushing testing.

This remarkable success story underscores Vesconite's commitment to providing cost-effective high-performance solutions to the mining industry, and its capacity to transform operational efficiency and longevity.

"As the world's leading copper producer explores broader applications for Vesconite Hilube, the mining industry, where Vesconite first proved itself, is showing itself to be an important market for Vesconite products," says Panzini.

"Vesconite Hilube lasts much more than three times the length of bronze in this application," he notes.

Contact: Deborah Spicer +27 11 616 1111
vesconite@vesconite.com





Shamrock Handling Concepts has extended its range of Moffett forklift trucks to include the new generation M5 and M8 NX series, which has been designed for safe and efficient operation on rough terrain and in confined areas.

NEXT GENERATION TRUCK MOUNTED FORKLIFTS FOR HIGH EFFICIENCY AND GREATER SAFETY

Shamrock Handling Concepts has extended its range of Moffett forklift trucks to include the new generation M5 and M8 NX series, which has been designed for safe and efficient operation on rough terrain and in confined areas.

“Our new Moffett M5 NX and M8 NX truck mounted forklifts enhance the M4 NX series that we launched locally in 2021. The M5 and M8 NX series encompasses new improvements for greater performance, improved safety and comfort, as well as simplified maintenance,” states Brenton Kemp, Managing Director, Shamrock Handling Concepts, distributors in Southern Africa of leading materials handling equipment. “Our customers are impressed at how quickly, safely and easily these versatile forklifts transfer loads in challenging outdoor conditions, busy yards and in confined warehouse aisles.

“What’s also notable about the investment in these versatile forklift trucks is reduced cost of ownership, because one machine is able to efficiently handle various tasks and maintenance requirements are minimal. In addition, users are able to easily transport these lightweight machines from one site to another on almost any truck or trailer.”

M5 and M8 NX machines also offer reduced fuel consumption and quiet operation. An important standard safety feature is the GroundStart™ facility that ensures effortless dismounting from the machine for the operator.

Other new features of this series include a one-side loading design which enables operators to lift, lower and carry loads, even in confined work spaces.

Other new features include a re-designed chassis with optimised weight distribution for greater safety on site, a high-visibility mast for precise load positioning, an interlocking seatbelt that prevents driving if not connected, LED work lights and a more spacious operator station. The newly constructed bonnet and rear doors enable easy access for daily checks and reduced maintenance time.

The NX range is available from Shamrock Handling Concepts with a wide range of attachments and options, including multi-directional 4-way steering for negotiating tight access areas with long loads, a load backrest, different lift heights and various tyre options.

Users also have a choice of attachments, including comprising telescopic forks, fork positioners and extensions, integrated side shift and rotators. These attachments have been specially-designed for the safe and dependable handling of a wide range of goods.

Moffett M5 20.3 NX machines, which are suitable for medium to heavy-duty tasks, have an efficient power to weight ratio, offering a maximum lift capacity of 2 000 kg. These machines have an overhang of 1 200 mm and ground clearance of 220 mm.

The M8 25.3 NX has been completely redesigned for improved performance in the most demanding operations. This compact machine has a lifting capacity of 2,500 kg, a lifting height of 3 040 mm, a 1 475 mm overhang and ground clearance of 280 mm.

These robust truck mounted forklifts ensure dependable load handling in many industries, including, food and beverage products, agricultural and building materials, recycling and waste management, chemicals and industrial gas, as well as fire and rescue operations.

Shamrock Handling Concepts offers a standard three-year warranty with every Moffett forklift in the NX range, as well as a national support service.



ROLL OUT THE BARREL AND MAKE BARRELS OF MONEY

Mobile Heavy Duty Rock trommels have hit the local market for the first time and are about to change the mining and quarrying landscape wherever their efficient screening mechanisms are able to unlock mineral bounty faster and more efficiently. Due to its rotating barrel design the minerals bearing materials can be manipulated to process easier and in the case of coal and diamonds the action of the trommel can actually be used to liberate the minerals and reduce the need for further processing. The action also suits sticky materials and those prone to clogging gravity fed incline and other types of screens. Why haven't mobile trommels been used before in the mining industry in southern Africa before? The answer is that the machines have simply not been available to date and the arrival of MDS Heavy duty Track Trommels on African shores now brings parity to the market. They will allow African mines to process minerals in the same efficient manner as their American, Asian and European counterparts in certain applications.

Terex-owned MDS recently concluded an exclusive distribution agreement with the country's largest multi-franchise distributor, ELB Equipment, where it will be sold among the likes of its Powerscreen, Terex Minerals Processing and other mining OEM suppliers. Wakefield Harding, ELB Equipment divisional director for mining, says the addition of the MDS range of tracked trommels effectively closes the screening loop for its customers with a full range of equipment for any application. Although static trommels are used in the industry, the arrival of the MDS tracked trommels provide flexibility to move the machine to suit the changing landscape of a mine and reduce handling. With aperture sizes up to 450mm the trommels can be fed large rock sizes and screened to three different streams if needed. Although the trommels are application specific and potential users would be required to speak to an ELB Equipment mining expert, ELB Equipment product and applications manager, Heath Dickson, says the following are some of the innovative applications that should be examined:

1.Coal

In South Africa we have an abundance of coal and an abundance of low-grade coal with a lot of shale. To put this low-grade coal through a crusher you make it unusable. By putting it through a trommel and it tumbles through and the coal that is adhering to the shale stays intact and the coal falls off and can be processed as fines as Higher-grade coal. This can be done at a tenth of the price of usual crushing and screening methods and more available coal can be liberated and sold rather than ending up on the dump or needing washing to be obtained.

2.Diamonds

We all know that diamonds sit in the minus 30 to 40mm fraction where as much as 70% of feedstock is above 30mm and the trommel can send all minus 50mm to the diamond processing plant. With the trommel you can do it all in field and leave all the rest behind as waste. This will reduce wear and tear compared to a conventional scalping plant.

3.Quarrying

Demand for gabions, ballast, riprap, armour rock etc are increasing and the use of a tracked trommel enables quarries to start with large size rock and screen up to three separate streams without the need for crushing. This results in more available saleable product and dramatically reduces wear and tear of secondary screens if required for smaller sized materials. Depending on the location and projects in the pipeline the trommels can significantly reduce the ROI of the quarry and the equipment.

4.Borrow pits and recycling

The tracked trommel comes into its own with the ability to process large rocks on site wherever road and railway construction or flood protection requires the use of borrow pits. With the ability to process large rocks in many instances no additional processing is required. The trommels ability to handle large sizes and rebar makes it ideal for demolition and processing work.

Regional distributors

While these are some of the new applications that can be unlocked by MDS trommels the machines are also efficient in run-of-the-mill work wherever speed and efficiency is required. The agreement with ELB Equipment ensures the availability wherever they are needed in southern Africa and enjoying the full service and support of the company's large branch and dealer network.

ELB Equipment, Wakefield Harding, Divisional Director, Tel: (011) 306 0700, Email: wakefieldh@elbquip.co.za, Web: www.elbequipment.com



BABCOCK PROVIDES TOTAL FUEL LOCKDOWN ON EVERY NEW DAF TRUCK

Fuel theft is a serious concern for every South African fleet operator. To provide its customers with maximum anti-fuel theft protection, Babcock became the first truck supplier in South Africa in 2019 to standardise TankSafe Optimum – the only fuel security device that offers protection against all forms of fuel theft, overfilling and spilling.

In an environment where diesel prices have risen by a whopping 80% in the past 10 years and more than doubled in the past four years, every drop counts for fleet owners. For transport operators, fuel accounts for the largest operating expense, representing up to 60% of total operating costs of a vehicle, yet fleet owners have to contend with the growing scourge of fuel theft.

It is therefore important for transport operators to ensure maximum fuel security on their vehicles to guard against fuel theft. With that in mind, Babcock has been offering TankSafe Optimum – the award-winning UK-made fuel security device that provides 100% protection from fuel theft in the form of siphoning and skimming. In fact, the device offers three-in-one protection – stopping fuel spills, overfilling and theft. “One of our clients made us aware of the challenges with generic anti-siphoning units, particularly the ability to skim fuel from the top of the tank,” explains Marius Barnard, MD of Babcock’s Transport Solutions business. “Once we tested the TankSafe Optimum device, we found that it was the only product in the market that could guarantee total fuel tank security. Babcock is therefore proud to be the first OEM in South Africa to fit these devices on all new vehicles.” On the back of the successes of the TankSafe Optimum device, Babcock now offers the full TankSafe offering as standard, which includes the SenderSafe and DrainSafe, to protect all secondary access points on a fuel tank to ensure a total fuel lockdown on every DAF vehicle. SenderSafe prevents tampering or removal of the fuel sender and pipes, while DrainSafe prevents unauthorised draining of the fuel tank. The anti-tamper banjo bolt replaces the original drain plug/block off and requires a special security tool to unscrew the bolt.

“Our pre-delivery workshop has been fitting the TankSafe Optimum and DrainSafe products as stock-standard fitments on all vehicles since August 2019. We have also recently begun fitting HoseSafe kits as stock-standard on all new DAF vehicles. The primary reason for this decision is that we identified the importance of providing maximum anti-fuel theft protection for our customers, who acknowledge and appreciate the cost-benefit,” explains Dean Temlett, GM – Technical Services. Furthermore, it reduces the risk of fuel consumption disputes between the OEM and customers. Ken Bailey, MD of TankSafe South Africa, commends Babcock for realising that not all anti-siphons were created equal, and for opting for TankSafe to stop fuel losses from theft and overfilling. Fuel theft, he adds, has evolved and where one point is secured, others access points are found. These are called secondary access points such as tampering with the fuel level sensor, hoses and drainplugs. “I have been in the automotive industry for the past 30 years, initially in the fleet management/telematics business. We would all agree that the technology has been key to changing driver behaviour and driving efficiencies for customers. Coupled with that has been the great technological advances by OEMs to reduce fuel consumption in their offerings,” says Bailey. Despite these improvements in technology, customers are still not realising the projected return on investment. While telematics data shows that fuel efficiency in vehicles is improving, many customers still do not see any significant change in their fuel spend. The only explanation, he says, is fuel siphoning. The general theory around the world is that 99% of fuel theft is through skimming. “This doesn’t mean emptying a 400-litre tank of fuel in one go, but taking, for example, some 20 litres after every refill. Skimming often goes undetected because one can claim various reasons such as traffic and strong head winds for the excess 20 litres of fuel,” explains Bailey.

Over the years, adds Bailey, various anti-siphoning devices have come to the market to curb the scourge of fuel theft, but none has provided full protection. TankSafe Optimum addresses the problem through its unique float-valve which allows fuel to flow into the tank during the filling process and then ‘locks’ the tank once filling is complete. “The pressure of the flowing fuel pushes the float ball down while it enters. However, when filling is complete, the float ball rises up to lock off the tank. In this way, no fuel can be siphoned, not even the top few centimetres. The float-valve lock process also prevents overfilling and spills, which alleviates a lot of health and safety as well as environmental concerns,” says Bailey. While TankSafe Optimum comes at double the price of some of the traditional anti-siphoning devices (at a retail price of about R10 000 for the full lockdown kit on two tanks), the return on investment is unmatched. “If, for example, one siphons out some 25 litres after every tank fill, it means that some 50 litres is stolen every week if the truck refills twice a week. If a truck loses about 50 litres of fuel per week, that translates into more than 2 500 litres per truck per year,” he says. Putting a R24 average rand value to every litre, this means that the fleet owner could be losing in excess of R60 000 per truck per year. These numbers are staggering for transport operators running big fleets. A fleet owner with say 10 trucks in his fleet would be losing over R600 000 per year across the whole fleet.

In conclusion, Babcock is proud that DAF is the first truck OEM in South Africa to offer a fit-for-purpose solution that locks down the entire tank, ensuring customers receive the best possible fuel consumption.

“Our customers are extremely happy that we now fit this as standard to all new vehicles going into the market. Collaborating with TankSafe South Africa aligns well with Babcock International’s purpose to create a safe and secure world together.

This is absolutely the best investment every fleet owner can make,” concludes Barnard.

Philippi-Hagenbuch has expanded its portfolio of HiVol® Hard Rock Bodies to include asymmetrical bodies that are optimized for underground environments.



PHILIPPI-HAGENBUCH CUSTOM ENGINEERS ASYMMETRICAL HARD ROCK BODY FOR UNDERGROUND HAULING ENVIRONMENTS

Philippi-Hagenbuch Inc., a global leader in off-highway haul truck customization, expands its custom engineering portfolio of Hi-Vol® Hard Rock Bodies to include asymmetrical bodies that are optimized for underground environments. Philippi-Hagenbuch manufactured and delivered the inaugural four bodies for articulated John Deere 260E haul trucks working in an underground limestone mine in Kansas City, Missouri. The design maximizes each truck's hauling capacity while allowing for safer, more efficient loading to account for environmental constraints, such as clearance and visibility.

"We recognize that every mine is different, so it's always been a focus to address our clients' needs with custom-engineered and manufactured solutions," said Josh Swank, Philippi-Hagenbuch vice president of sales and marketing. "In a dark underground space, these custom-engineered bodies make a significant difference in terms of increasing the safety and efficiency of the loading process."

Each Hard Rock Body for the underground limestone mine has a total volumetric capacity of 23.9 cubic yards, an increase over the 19.6 OEM body capacity. The custom design features a hoisted, low-side body in which the passenger side is taller than the driver's to factor in loading conditions such as the loader itself, mine height, loading direction and cycle time. This asymmetry gives clearance for the loader on the driver's side and allows the passenger side to act as a backboard to catch material as it is loaded, avoiding unnecessary spillage.

To ensure an equal distribution of weight and improve stability, Philippi-Hagenbuch engineered the bodies with a floor that is elongated on the driver's side and shortened on the passenger side. Widening the body lowers the center of gravity, making the truck more stable and increasing operator safety. Engineers addressed the unique size of the offset body by customizing a cylinder mount with shortened OEM cylinders to meet clearance specifications and ensure the body of the truck did not hit the ceiling in the underground mine when dumping.

"Although the cylinder mount required engineering, we did not have to design a brand-new cylinder for it," Swank continued. "Our philosophy at Philippi-Hagenbuch is to use as many OEM body-mounting components as possible so that it's easier for clients to replace wear parts, minimizing maintenance and downtime."

Philippi-Hagenbuch builds each body exclusively with high-strength, abrasion-resistant Hardox® 450 steel for robust durability to handle extreme mining environments. Additionally, the bodies come equipped with a custom-engineered Autogate® tailgate to maximize capacity and prevent spillage from the back of the truck. These tailgates are uniquely designed to match the asymmetrical shape of the custom body and the natural angle of repose of the material being hauled.

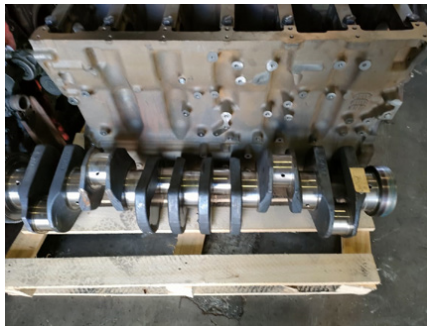
This design, while engineered for a specific mining operation, offers potential benefits for a wide range of operations with underground haul trucks. To learn more about Philippi-Hagenbuch and the company's full range of custom-engineered haul truck bodies, visit philsystems.com.

About Philippi-Hagenbuch Inc.

Engineering innovative haul-truck solutions for over 52 years, Philippi-Hagenbuch Inc. is located in Peoria, Illinois and has been building equipment for off-highway haul trucks since 1969. During this time PHIL has become the global leader in off-highway truck customization. In addition to their innovative tailgates, push blocks, rear eject bodies and trailers, Philippi-Hagenbuch designs and builds custom high-volume end-dump bodies, lowboy and bottom dump trailers, sideboards, load ejectors and water tanks for nearly every make and model of articulated and rigid frame off-highway truck available.

For more information visit www.philsystems.com.

For further info on how to get your company listed in the Earthbroker please call...**Janine - 083 456 4027**



CAT 3406 C CRANKSHAFT STD AND POLISHED

R35K Excl

Tiaan
078 126 5383



CAT 3406 16G

SERIAL NR 93U
COMPLETE ENGINE ZERO
HOURS REBUILD-SERVICE
EXCHANGE

Bart
083 327 4172



CUMMINS 8.3 130KW

R125K Excl

Bart
083 327 4172



CAT C7 962 H

Engine Complete-Runner
Engine serial nr KHX37783

Tiaan
078 126 5383



2 X QSX 15 ENGINE. NON RUNNERS.

45K each

Allan - 063 500 2837



CAT 320D

R950 000,00 + VAT

Dewald Hattingh:
+27(0) 72 547 2198
+27(0) 11 973 3737
info@atlasmasjiene.co.za



CAT 777D DUMP-TRUCK

2012 model
2 units available
Call for Details

THOMAS MITTAG
Cell: +27 72 545 6223
info@mae-equipment.com



TADANO TR250M-4 CRANE

Contact
+27 11 555 2000
info@blcplant.com



VÖGELE PAVER SUPER 1803-2

2012 model
Call for Details

THOMAS MITTAG
Cell: +27 72 545 6223
info@mae-equipment.com



CAT 6015B EXCAVATOR

+27 72 338 2196
info@dozer.co.za
www.dozer.co.za

For further info on how to get your company listed in the Earthbroker please call...**Janine - 083 456 4027**

For further info on how to get your company listed in the Earthbroker please call...**Janine - 083 456 4027**



CAT D6T DOZER FOR SALE

SER NO: CAT00D6TCSMC00581*

HOURS: 11294.4

Gerrard Muller - +27 78 026 3772

LJR



Auto electrical field service trouble shooting and repair on most HD equipment specializing in **HITACHI / CAT / VOLVO / BELL / KOMATSU**.

We also provide HVAC System Repair and Re-gas.

GOOD NEW AND USED PARTS NETWORK

**YOU HAVE TRIED THE REST
NOW CHOOSE THE BEST**

Email: ljrearthmoving@gmail.com
Tel: 061 523 4997

H.V.R

TURBOS

SINCE 2001

WE ARE THERE FOR YOU ... CALL, WE DO!

KOOP & VERKOOP

**GRONDVERSKUIWINGSMASJINERIE
TROKKE, SLEEPWAENS, VURKHYERS
EN BOORMASJIENE
OP**

WWW.HVRTURBOS.CO.ZA

**HENNING
083 755 2177**

CMS MECHANICAL SERVICES

EST 2002

- Repair on all Earthmoving Equipment
- Rebuild of CAT Engine & Transmissions
- Field Services

Thelani Scholtz 072 874 1870
Dawie Scholtz 082 968 9748

www.cmsmechanical.co.za



CAT 330C

R750 000 + VAT

Dewald Hattingh: +27(0) 72 547 2198
+27(0) 11 973 3737
info@atlasmasjiene.co.za



**CAT 777D
DUMP TRUCKS**

+27 72 338 2196
info@dozer.co.za
www.dozer.co.za



CAT 980G

R1 500 000,00 + VAT

Dewald Hattingh:
+27 (0)72 547 2198
+27 (0)11 973 3737
info@atlasmasjiene.co.za

For further info on how to get your company listed in the Earthbroker please call...**Janine - 083 456 4027**

For further info on how to get your company listed in the Earthbroker please call...**Janine - 083 456 4027**



CAT 7 7 X QSM 11 CUMMINS ENGINES. NON RUNNERS 73E

35K EACH

Allan - 063 500 2837



CAT 3412 V12 ENGINE. 1000 HRS.

240K

Allan - 063 500 2837



EPIROC D65 FLEXIROC DRILL RIG

**2017 MODEL
CALL FOR DETAILS**

THOMAS MITTAG
Cell: +27 72 545 6223
info@mae-equipment.com



CAT 224E

R250 000,00 + VAT

Dewald Hattingh: +27(0) 72 547
2198 +27(0) 11 973 3737
info@atlasmasjiene.co.za



KOMATSU WA380-6

Contact Stuart Mckenzie
Tel: 033 212 2181
Cell: 082 558 7901
Email: sjm@mckenzieplant.co.za



CAT 930

R380 000 +VAT

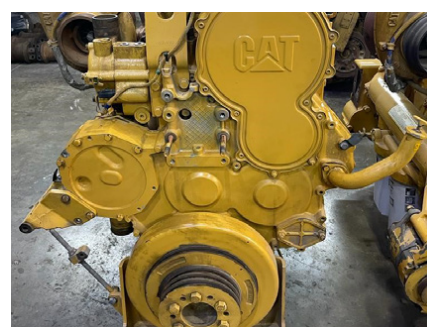
(011)894-6192(011)894-3377
barney@stmmining.co.za
donovan@stmmining.co.za



2012 BELL B30D

**R 1 350 000
EACH EXCL VAT**

Caliber Machinery
Jean Claude van Dam
012 940 0688



CAT C18 ENGINE

Hennie
+27 82 414 1393
hennie@inmine.co.za



CAT D10T & D11T ENGINES

0 Hour rebuilds

Francois
+27 66 281 9753
francois@inmine.co.za



CAT MOTOR GRADER

120H

Contact
+27 11 555 2000
info@blcplant.com

For further info on how to get your company listed in the Earthbroker please call...**Janine - 083 456 4027**

For further info on how to get your company listed in the Earthbroker please call...Janine - 083 456 4027



INGERSOLL-RAND ROLLERPACK 27T

Contact
+27 11 555 2000
info@blcplant.com



BOMAG BW 177-4

R550 000,00 + VAT

Dewald Hattingh: +27(0) 72 547
2198 +27(0) 11 973 3737
info@atlasmasjiene.co.za



CAT D11T 2011

Contact
+27 11 555 2000
info@blcplant.com



TADANO TR250-5 CRANE

Contact
+27 11 555 2000
info@blcplant.com



BELL 225A LOGGER WORK READY.

R395 000

Contact Deryck Eddy
076 551 2637
ctcplantinterafrika@gmail.com



TEREX WHEELED EXCAVATOR

MONTEBERT HAMMER,
BUCKET, HYDRAULIC
QUICK COUPLER
3 000 HRS | 2007 | R785 000

Contact Deryck Eddy
076 551 2637
ctcplantinterafrika@gmail.com



2 X QSX 15 ENGINE. NON RUNNERS. 45K EACH

Allan - 063 500 2837



BELL 2606E

R950 000,00 + VAT

Dewald Hattingh:
+27 (0)72 547 2198
+27 (0)11 973 3737
info@atlasmasjiene.co.za



MAHINDRA VX 90-4WD GP BKT A/C

Serial No:
MDZBE4BECK6C50114
YOM: 2019 / Engine: NJH5WLE1023
ODO:507 / Hours: 1490.6

Contact
+27 11 555 2000
info@blcplant.com

For more info on advertising your
machine or spares in the classifieds
please call Janine on 083 456 4027
janine@earthbroker.co.za

For further info on how to get your company listed in the Earthbroker please call...Janine - 083 456 4027

Agriculture / Forestry

Bell Equipment
CATERLIM
Equipment Parts & Engines
Great North Power Solutions
LNE Agri-Earth

Attachments

Belrex 97 cc
CATERLIM
Great North Power Solutions
Rhino Excavator Hammers

Buckets

Belrex 97 cc
CATERLIM
INMINE - Inala mining services
Industrial Plant Solutions
Great North Power Solutions
LIMCAT
Paramount Group
STM Mining
Wearpact

Dyno Testing

CATERLIM
Great North Power Solutions
LIMCAT
Mzantsi Transmissions
Power Transmission Technology

Exhausts

Rustpet Exhausts

Engineering

Caliber Machinery
CATERLIM
Earthmach
East Coast Gears
Gears for Africa
Great North Power Solutions
LIMCAT
Mayfair Gearbox
New Beginning Designs
Pro Link Hydraulics
Ultimate Exchange Components

Gearbox / Transmissions

CATERLIM
East Coast Gears
Equipment Parts & Engines
Great North Power Solutions
LIMCAT
Mayfair Gearbox
Mzantsi Transmissions
Power Transmission Technology
Sintech
Vortex Transmissions

Gears

CATERLIM
East Coast Gears
Gears for Africa
Great North Power Solutions
LIMCAT

Generators

Beyers Truck and Plant
Great North Power Solutions
Handax Machinery
TraxGlobal

G.E.T / Undercarriage

Belrex 97 cc
Blumaq
Brakecore Supply Co.
CATERLIM
Centrax
ESP
Great North Power Solutions
Handax Machinery
ITR Africa
Industrial Plant Solutions
Mid Plant Services
Paramount Group
Spec-Cast Wear Parts
STM Mining
Wearpact

Hydraulics

CATERLIM
Industrial Plant Solutions
Great North Power Solutions
LIMCAT
Mid Plant Services
Power Transmission Technology
Pro Link Hydraulics
One Stop Procurement
Ultimate Exchange Components

Lubricants & Oils

Bell Equipment
CATERLIM
Earthmach
Great North Power Solutions
Handax Machinery

Machine Hire

AmPlant
BLC Plant Company
Bulk Machine Hire
Caliber Machinery
Rhino Excavator Hammers

New Machines

Bell Equipment
Benetrax Machinery
Beyers Truck and Plant
Earth Mach
Handax Machinery
Rondebult Construction Machines
Zoomlion - MAS Power

New Parts

All Africa Supplies
Bell Equipment
Belrex 97 cc
Benetrax Machinery
Beyers Truck and Plant
Blumaq
Brakecore Supply Co.
CTC Plant Company
Caliber Machinery
CATERLIM
Centrax
East Coast Gears
Equipment Parts & Engines
ESP
Great North Power Solutions
Handax Machinery
ITR Africa
Industrial Plant Solutions
LNE Agri-Earth

New Parts

Landbou Parts
Mid Plant Services
One Stop Procurement
Prime Plant
Paramount Group
Pro Link Hydraulics
Rhino Excavator Hammers
Rondebult Construction Machines
Rustpet Exhausts
Sintech
Shin-Li Trading
Spec-Cast Wear Parts
STM Mining
TraxGlobal
Ultimate Exchange Components
Wearpact
WEICHI SEM Parts
Zoomlion - MAS Power

Pumps

Blumaq
CATERLIM
Great North Power Solutions
Hurricane Diesel
Industrial Plant Solutions
LIMCAT
Mid Plant Services
Pro Link Hydraulics
Shin-Li Trading

Seats / Upholstery

CATERLIM
Equipment Parts & Engines
Great North Power Solutions
The Seat Connection

Services

All Africa Supplies
Bell Equipment
Benetrax Machinery
Beyers Truck and Plant
Caliber Machinery
CATERLIM
Dura Sales
Earth Mach
Equipment Parts & Engines
Gears for Africa
Great North Power Solutions
Handax Machinery
INMINE - Inala mining services
ITR Africa
LNE Agri-Earth
LIMCAT
Mayfair Gearbox
Power Transmission Technology
Pro Link Hydraulics
Prime Plant
Mid Plant Services
RC Investments
Ultimate Exchange Components
Vortex Transmissions

Turbos

CATERLIM
Equipment Parts & Engines
Great North Power Solutions

Turbos

Industrial Plant Solutions
Turbo Direct

Torque Convertors

CATERLIM
Equipment Parts & Engines
Great North Power Solutions
ITR Africa
Industrial Plant Solutions
One Stop ProcurementSintech

Tyres

Associated Equipment / Vendel Civils
CATERLIM
Great North Power Solutions
Handax Machinery

Used Machines

All Africa Supplies
Atlas Masjiene
AmPlant
BLC Plant Company
Caliber Machinery
CATERLIM
Dozer Earthmoving
Dura Equipment Sales
EarthComp Earthmoving
Earthmach
Great North Power Solutions
INMINE - Inala mining services
LIMCAT
Mae Equipment
McKenzie Plant Sales
Mid Plant Services
Paramount Equipment
Rondebult Construction Machines
STM Mining Equipment
Vendel Equipment Sales
WEICHI SEM Parts

Used Parts

All Africa Supplies
Bell Equipment
BLC Plant Company
Brakecore Supply Co.
Beyers Truck and Plant
Caliber Machinery
CATERLIM
Dozer Earthmoving
Dura Parts
East Coast Gears
EarthComp Earthmoving
Earthmoving Specialist
Equipment Parts & Engines
Great North Power Solutions
ITR Africa
INMINE - Inala mining services
Industrial Plant Solutions
LNE Agri-Earth
LIMCAT
Mid Plant Services
Paramount Group
Prime Plant
Pro Link Hydraulics
RC Investments
Rondebult Construction Machines
STM Mining Equipment
Shin-Li Trading
TraxGlobal
Ultimate Exchange Components
WEICHI SEM Parts

earthbroker

your sourcing solution for new & used equipment & machinery

The Earthbroker is published monthly and 5400 copies are sent to all the mines, quarries, and all companies dealing with earthmoving and construction in South Africa, Africa and some overseas countries.

We are **ABC accredited**.

We also have a website where anyone can view the magazine, which is updated monthly with the latest changes and advertisements. Please view our E-Mag on www.earthbroker.co.za

Our E-magazine is uploaded monthly to Facebook, Instagram, LinkedIn and our mobile App.

We accept about 5 editorials a month which we insert free of charge. Should you have an editorial which is relevant to the industry, we will gladly give it consideration.

For details of our prices on a full page, half page or quarter page, please phone me on 083 456 4027 or e-mail me at janine@earthbroker.co.za.

We do not ask anyone to sign a contract, however we do insist on a **full calendar month's notice** for cancellation.

Please note that all quotations exclude VAT. We do insertions, (own printing costs) at R1.50 each excluding VAT.

Classifieds at R500.00 excluding VAT for a business card size advertisement only.

Janine Sargeant
(CELL) 083 456 4027
janine@earthbroker.co.za

**Should you want to receive a free copy of our magazine
please email your details to janine@earthbroker.co.za**

Conditions of Acceptance for advertising

Adverts are subject to the following conditions:

1. Often we receive faxes with illegible letters or numbers. We accept no responsibility due to this.
2. We accept NO responsibility for errors in advertisements received telephonically.
3. We reserve the right to refuse placement or to place the advertisement/s as we see fit.
4. No responsibility will be taken for omission of advertisements, for any errors/colour-differences in advertisements or any results due to such errors.
5. We accept no responsibility for the quality of goods advertised. We merely bring buyers and sellers into contact with each other and we are not responsible for any results due to transactions made through the advertisements.
6. Please note one full calendar months written notice for cancellations.
7. Payment due prior to publication or interest will be charged.
8. There will be an annual increase of 10% at the beginning of each year.
9. The Earthbroker will not be held responsible for content of any advert inserted in our magazine.

Quick Reference

COMPANY	BRANCH	DESIGNATION	CONTACT	TEL NO	CELL	EMAIL
Africa Truck & Plant	PMB	Sales	Denver Pillay	033 386 78 65	071 416 08 26	pillaydenver84@gmail.com
Allied Wear Parts	JHB	Sales	Dean		064 067 6697	dean@alliedwearparts.co.za
Allied Wear Parts	JHB		Kerry		064 593 8778	kerry@alliedwearparts.co.za
Armour Plant Sales	JHB	Director	Zander Goosen	+27 82 553 5750		sales@armourplant.co.za
Armour Plant Sales	JHB	Sales & Marketing Manager	Ruben Gerber	+27 83 245 9330		sales@armourplant.co.za
Atlas Masjiene	JHB		Dewald Hattingh	+27(0) 72 547 2198 +27(0) 11 973 3737		info@atlasmasjiene.co.za
Action Equipment Co	JHB	Sales	Yolanda	011 452 1298		yolanda@action.co.za
Andru Mining	JHB	Sales	Naren Birdju	(011)395 0200 / +27 82 859 0766		plantsales@andru.co.za
Atlas Masjiene	JHB		Dewald Hattingh	+27(0) 72 547 2198 +27(0) 11 973 3737		info@atlasmasjiene.co.za
Atlas Service Centre	JHB		Fourie Von Tonder		083 301 1632	
Africaplant.com	Newcastle	Sales	Mark	034 318 3032	082 301 3961	admin@afriplant.com

COMPANY	BRANCH	DESIGNATION	CONTACT	TEL NO	CELL	EMAIL
Afritool – Rent	JHB		Karen Abrams	011 974 2819	082 523 9777	karen.abrams@fluor.com
Alf's Tippers JHB	Sales		Alf Ferreira	011 824 0013	083 260 6929	alfplant@global.co.za
All Africa Supplies	JHB		Jody Da Silva	011 918 9976		sales@allafricasupplies.net
Amplant	Polokwane		Eddie Simpson	015 293 1221	082 904 7694	simpson@amplant.co.za
Anric Enterprises	JHB		Ric de Nysschen	011 740 0975	082 647 9955	anric@cybertrade.co.za
Ant Lift Carry Cranes	JHB	Sales	Mathew Henderson		083 973 1378	mathew@maspower.co.za
AquaJet Profiles (Pty)Ltd	JHB	Director & Sales	Brad	011 908 5550	073 470 4958	info@aquajetprofiles.co.za
Arch Equipment	JHB		Greg Archibald		082 803 4227	archhire@mweb.co.za
Associated Equipment Co	JHB	Sales	Jaap	011 801 4911/2	082 892 1327	associated1@xnet.co.za
AVANT SA CPT			Wally	021 851 0722	076 688 3399	info@avantsa.co.za
Azrel Equipment	JHB	Sales	Mike Imrie	(010)590 8048	083 230 3118	mike@azrelequipment.com
Barloworld Equipment Co	Durban	Parts	Brett Woodhouse	031 705 8500	071 484 1035	bwoodhouse@barloworld-equipment.com
Barloworld Equipment Co	Durban	Parts	R. Haripersadh	031 705 8500		rharipersadh@barloworld-equipment.com
Barloworld Equipment Co	Newcastle	Parts	Milan Pather	034 315 2847	073 971 2046	mpather@barloworld-equipment.com
Barloworld Equipment Co	Newcastle	Sales	Brendan Moore	034 315 2847	073 781 8865	
Barloworld Equipment Co	Richardsbay	CRS	Rolfe Botes	035 797 6300	082 904 9619	jhumphries@bw-eq.com
Barloworld Equipment Co	Bloemfontein	Sales	Quentin Coetzee	051 4091200	078 460 2622	qcoetzee@barloworld-equipment.com
Bell Equipment	Richards Bay	Parts	Jackie Smith	035 907 9111	082 550 8791	bellparts@bell.co.za
Bell Equipment		Sales	Andrew Pretorius	011 928 9700	071 607 3978	partssales@bell.co.za
Bell Equipment	JHB	Used Parts	Fazel Patel	011 928 9700		usedparts@bell.co.za
Bell Equipment	JHB	Machine Sales	Myburgh	011 928 9700		sales@bell.co.za
Benetrax Machinery	JHB	Sales	Johan Coetzer	011 397 1313	071 599 5421	johanc@benetrax.co.za
Benetrax Machinery	JHB	Sales	Allan Webber	011 397 1313	071 599 5423	allanw@benetrax.co.za
Bert's Bricks (Pty)Ltd	Potchefstroom	Sales	Lizelle	(018)292 1615		marketing@bertsbricks.co.za
Beyers Track and Plant	Gauteng	Sales		(011)794 8271	(WhatsApp) 078 725 6917	beyers@truckandplant.co.za
BKB Van Wyk	JHB			017 712 2132		vanwykinfo@telkomsa.net
Blumaq	JHB		John Beukes	011 966 5092		john.beukes@blumaq.com
BLC Plant Company	JHB	Machine Sales	Luigi Stravino	011 555 2000	082 552 7017	luigistravino@blcplant.com
BLC Plant Company	JHB	Machine Sales	Paolo Stravino	011 555 2000	082 852 3721	paolostravino@blcplant.com
BLC Plant Company	JHB	Machine Sales	Andrew McCall	011 555 2000	082 256 0334	andrewmccall@blcplant.com
BLC Parts	JHB	Parts Sales	Robbie Stocks	011 555 2000	082 492 9263	
BLC Parts	JHB	Sales	Mike du Plessis	011 555 2000	082 508 2908	mikeduplessis@blcplant.com
BLC Parts	JHB	Sales	Clement van der Merwe	011 555 2000	073 202 8010	michaelmarriott@blcplant.com
BMH Trading International	Cape Town		Bradley	021 903 2667	082 780 0084	bradley@bmhtradinginternational.com
Bom-mach / Stampede	JHB	Sales	Jabu	011 394 5704		info@stampede.co.za
Brakecore Supply Co.	Ermelo (Head office)	Procurement	Gerrard Muller	017 819 3412	078 026 3772	gerrard@brakecore.co.za
Brakecore Supply Co.	JHB	Branch Manager	Clive Paul	011 826 3640	076 401 7885	clive@brakecore.co.za
Brakecore Supply Co.	JHB	Sales & Procurement	Collen Nthane	011 826 3640	079 318 9930	collen@brakecore.co.za
Bruforce	JHB		Craig	011 393 1298	083 627 2533	bruforce@lantic.co.za
Bulk Machine Hire	Bapsfontein	Sales	Neil Britz	066 197 0178		karen@bulkmachine.co.za
Burgers Equipment & Spares			Anka Burger	011 979 3636		admin.za@burgersafrica.com
C & J Earthmoving Repairs	JHB			011 025 9336	079 888 6071	mikecearth@gmail.com
CCMJ Earthmoving Solutions	JHB	Sales	Morne Venter		078 120 0659	morne@ccmj.co.za
CCMJ Earthmoving Solutions	JHB	Sales	Danie Maritz		082 854 9245	danie@ccmj.co.za
CMS Mechanical Services	Pretoria	Repairs	Thelani Scholtz		072 874 1870	cmsmech@telkomsa.net
CMS Mechanical Services	Pretoria	Repairs	Dawie Scholtz		082 968 9748	cmsmech@telkomsa.net
CPC Construction Spares	Cape Town		Chappie	021 981 4581	083 659 3395	chappiepcp@gmail.com
Caldas Engineering & Manufacturing	JHB	Marketing	Melanie	011 453 7797		info@caldas.co.za
Caliber Machinery	Pretoria	Sales	JC van Dam	012 940 0688	079 888 6071	jc@calibermachinery.com
Capital Equipment Parts	JHB		Mark	011 568 4215		info@capiparts.co.za
Catech Engineering	JHB		Lee Bray	071 687 9274		lee@cattam.co.za
Caterlim	Polokwane	Sales		015 004 0165		rep@caterlim.co.za
Caterlim	Polokwane	Workshop		015 004 0591		rep@caterlim.co.za
Centrax	JHB	Sales	Trevor	011 392 5055	083 608 5550	trevor@centraxsa.co.za
Centrax	JHB	Sales	Renier Olivier	086 123 6872	083 321 8106	renier@centraxsa.co.za
Centrax	DBN	Sales	Steve	086 123 6872	083 613 0664	steve@centraxsa.co.za
Cranes Direct	Boksburg	Parts Sales	John Thage	011 894 8056	083 254 4068	john@cranesdirect.co.za
Cranes Direct	Boksburg	Sales	Mark Le Roy	011 894 8056	083 233 2140	mark@cranesdirect.co.za
CTC Plant Company	Cape Town	Owner	Colin McOwen	021 386 4190	082 440 4806	colin@ctcplant.co.za
CTC Plant Company	Cape Town	Sales	Evert Jooste	021 386 4190	082 825 8865	evert@ctcplant.co.za
CTC Plant Company	Cape Town	Sales	Peter Groenewald	021 386 4190	072 368 5581	peterg@ctcplant.co.za
CTC Plant Company	Cape Town	Sales	Cobus Dreyer	021 386 4190	073 187 3752	cobus@ctcplant.co.za
CTC Plant Company	Cape Town	Parts	Mark Swanepoel	021 386 4190	082 825 6966	marks@ctcplant.co.za
CTC Plant Company	Cape Town	Parts	Nico Vermeulen	021 386 4190	084 525 6966	nicv@ctcplant.co.za
CTC Plant Company	Cape Town	Service	Olla van den Heever	021 386 4190	082 467 1894	olla@ctcplant.co.za
CTC Plant Company	Cape Town	Transport	Dudley Maarman	021 386 4190	082 495 2640	transport@ctcplant.co.za
CTC Plant Company	Cape Town	Workshop Manager	Ben du Toit	021 386 4190		
Classic Dimension Stone Mining			Ernst	073 634 6303		crafford46@gmail.com
Classic Dimension Stone Mining			Elsa	082 521 7095		elsa@ccsbrits.co.za
DBZ Diesel Parts	JHB			087 751 4555	074 106 2158	jhb@dbzdiesel.com
DBZ Diesel Parts	Cape Town		Jason Martincich	021 556 6502	082 353 5971	jason@dbzdiesel.com
DBZ Diesel Parts	Durban			031 564 8091/2	082 565 8446	durban@dbzdiesel.com
D- MAN SALES	JHB	Sales	Wessels		072 172 7718	wessels@lpss.co.za
Deutz Diesel Engines	Meadowdale		Johan Reiniers	(011)974 3549	082 457 1542	mierc@icon.co.za
Deutz Diesel Power	Durban	Branch manager	Nivern Pather	031 700 2384	082 375 4912	nivern@deutz.co.za
Deutz Diesel Power	JHB		Nathan Kitchen	011 923 0600		nathan@deutz.co.za
DGI Trading	JHB		Henk Arnold	010 065 0888	083 233 0019	henk.arnold@dgitrading.co.za
Dirt Diggers	JHB		Vic Viljoen	011 023 6674	082 822 3915	vicv@merchantwest.co.za
Dosco Hydraulic Eng. cc	Montague Gardens		David Laubscher	021 551 2283	082 579 6465	david@doscocape.co.za
Dosco Hydraulic Eng. cc	Montague Gardens		Mike Hart	021 551 2283	082 228 5031	
Dozer Earthmoving	JHB		Lance Reynolds	011 452 1224	072 338 2196	info@dozer.co.za
Dozer Earthmoving	JHB	Specialized Sales	Chris Cronje	011 452 1224	082 491 5472	info@dozer.co.za
Dozer Earthmoving	JHB	Specialized Sales	Danie De Meyer	011 452 1224	071 224 3316	info@dozer.co.za
Dura Equipment	JHB	Sales	Johan Mynhardt	011 918 4760	066 279 7801	johan@durasales.co.za
Dura Equipment	JHB	Sales	Danny Scholtz	011 918 4760	060 973 0799	dan@durasales.co.za

Quick Reference

COMPANY	BRANCH	DESIGNATION	CONTACT	TEL NO	CELL	EMAIL
Dura Equipment	JHB	Sales	Jerry van Niekerk	011 918 4760	082 895 5611	jerry@durasales.co.za
Dura Equipment	JHB	Sales	Curtis Brown	011 918 4760	083 258 5784	curtis@durasales.co.za
Dura Equipment	Cape Town	Sales	Gerrie du Randt	021 988 6618	082 950 7040	gerrie@durasales.co.za
Dura Parts	JHB	Specialized Sales	Adriaan Booysen		071 234 6234	adriaan@duraparts.co.za
Dura Parts	International	Sales	Willem du Randt		082 691 9524	wac@duraparts.co.za
E&A Spares	Durban	Sales	Deva	031 700 5791/2	082 659 5521	easpar@iafrica.com
EarthComp Earthmoving	Mpumalanga	Sales	Kobus		076 780 2463	marketing@earthcomp.co.za
EarthComp Earthmoving	Mpumalanga	Sales	Tertius		083 628 7773	marketing@earthcomp.co.za
Earth Mach	Mpumalanga		Chris	017 843 2072	083 232 8713	chris@earthmach.co.za
Earth Moving Plant & Trans.	Pinetown		Richard	031 705 1770	083 777 0152	richard@ept.co.za
Eazi Access	JHB	PR & Communications	Tralone		087 086 5039 / 079 010 8518	tralone.khoza@eazi.co.za
EHD Johannesburg		Sales	Lodewyk van As	011 870 5000		ehd@ehd.co.za
Earthmoving Machine Sales	KZN	Sales	Jason		083 412 1077	jason@sa-ems.co.za
East Coast Gears	KZN	Sales	Johan	031 701 3500	084 244 3324	eastcoastgears@gmail.com
ELB Equipment	Boksburg	Sales		011 306 0700		elb@elbquip.co.za
Emiliana Serbatoi SA	JHB	Sales	Darren		083 250 8481	darren@emilianaserbatoi.co.za
Emiliana Serbatoi SA	JHB	Sales	Mathew		083 973 1378	mathew@emilianaserbatoi.co.za
Equipment Parts & Engines	Kempton Park	New & Used Parts	Attie vd Bergh	011 571 9000	082 655 9276	info@equipmentparts.co.za
Equipment Parts & Engines	Kempton Park	Sales	Kirath Sinanin	011 571 9000	072 436 7215	info@equipmentparts.co.za
ESP	Isando	Div Manager	Adrian Erasmus	011 398 1700	083 449 0519	adriane@espa.co.za
ESP	Pretoria	Reg Manager	Willie v.d Merwe	012 804 6706	082 789 0828	williev@espa.co.za
ESP	Middleburg	Div Manager	Leon Bezuidenhout	013 246 2520	083 778 9877	leonb@espa.co.za
ESP	Pinetown	Reg Manager	Shaun Clarke	031 705 4200	082 413 1103	shaunc@espa.co.za
ESP	Cape Town	Reg Manager	Jaco Bekker	021 945 1030	072 384 4901	jacob@espa.co.za
ESP	Gqeberha	Branch Supervisor	Rainier Gerber	041 484 4575	083 698 1805	rainierg@espa.co.za
ESP	Bloemfontein	Reg Manager	Craig Wansbury	051 432 4501	082 413 2708	craigw@espa.co.za
ESP	Kimberley	Acting Parts Supervisor	Moses Bass	053 831 8349	084 313 3645	mosesb@espa.co.za
Filter Centre	Pinetown	Manager	Viyen Maharaj	031 700 9074	076 727 3985	info@filtercentre.com
Filvent	Witbank		Bernard	013 656 2726		workshopmanager@filvent.co.za
Fluid Blast Engineering	JHB		George Slabbert		082 550 1385	fluid.blast@live.com
Force 8 CC	Cape Town		Justin Nicoll	021 535 1117	082 373 9802	info@force8.co.za
Full Blast Hydraulics	JHB		Andre Calitz	(011)900 3790		info@fullblasthydraulics.com
Fusion Torque Components	JHB	Director	Eldred Carstens	011 828 9023	083 460 6790	eldredfusion@telkomsa.net
Gears for Africa	JHB	Sales	Carl	011 824 2017		carl@gearsforafrica.co.za
Gears for Africa	CPT	Sales	Carl	021 577 1030		carl@gearsforafrica.co.za
GET Spares	JHB	Sales	Raymond	(011)397 5276	082 655 2301	sales@getspares.co.za
GET Spares	JHB	Sales	Freddy	(011)397 5276	082 604 0045	sales@getspares.co.za
GET Spares	JHB	Sales	Clyde	(011)397 5276	082 581 5152	sales@getspares.co.za
Gillroy	Durban		Rob Gillit	031 765 2745	083 661 2057	info@gillroyplant.co.za
G-Man Trading	JHB	Sales	Luke Jr.	011 672 7011		lukej@gman.co.za
GO Industry - Dove Bid			John Cowing	0861 463 683	083 662 0237	john.cowing@liquidityservices.com
Great North Power Solutions	Polokwane	Sales		015 590 1886		rep@gnps.co.za
Grindright Engineering	Middelburg		Piet De Vos	013 246 2308	064 849 2320	grindright@gmail.com
Handax Machinery	JHB	Sales		011 3908160		Marketing@handaxmachinery.com
HL Du Plooy	Harrismith		Hennie Du Plooy	082 719 8744	082 574 4212	hennie@hlduplooyplant.co.za
Heavy Duty Earthmoving Parts			Jannie Burger	011 394 4125/6/7		jannie@hdep.co.za
Highland Bros	Gauteng	Sales	William Henderson		071 482 8675	william@highlandbrothers.co.za
HPE Africa	Jet Park	Sales Manager	Lani	011 397 4670		marketing@hpeafrica.co.za
HPE Africa	Durban	Branch Manager	Adam Armitage	031 700 3426		Adam.armitage@hpeafrica.co.za
HPE Africa	East London	Branch Manager	Leon Dreyer	043 732 1428		leon.dreyer@hpeafrica.co.za
HPE Africa	Cape Town	Branch Manager	Gary Pneumaticatos	021 905 0581/2		Gary.P@hpeafrica.co.za
Hurricane Diesel	JHB		Wikus Wasserman	010 597 7843	071 859 5777	info@hurricanediesel.co.za
Industrial Engine Parts	JHB	Sales	Morne	011 868 5436	082 851 7514	sales@ieppower.co.za
Industrial Plant Solutions	Natal		David Botha		083 405 3494	sales@ipsglobal.net
Inmine Inala Mining Services	Witbank		Hennie Nelson		082 414 1393	sales@inmine.co.za
ITR Africa	Johannesburg	Sales Mgr - Nat	Carel Zwiendelaar	011 614 0070	076 874 7296	carel.zwiendelaar@itrafrica.com
ITR Africa	Johannesburg	Sales Mgr - U/C	Sean Smit	011 614 0070	072 271 6069	sean.smit@itrafrica.com
ITR Africa	Johannesburg	Prod.Dev Manager	Edwin Luttig	011 614 0070	076 570 0911	edwin.luttig@itrafrica.com
ITR Africa	Johannesburg	Sales Manager	Michael Sanderson	011 614 0070	062 311 3376	michael.sanderson@itrafrica.com
ITR Africa	Middelburg	Area Manager	Rudi Le Roux	013 590 5614	083 500 3763	rudi.leroux@itrafrica.com
ITR Africa	Kathu	Internal Sales	Mavrick van Niekerk	053 723 2245	084 647 7163	mavrick.vanniekerk@itrafrica.com
ITR Africa	Cape Town	Area Manager	Roy De Bruyn	021 905 7340	079 107 2112	roy.debruyn@itrafrica.com
ITR Africa	Port Elizabeth	Area Manager	Roche Bester	041 451 2222	082 476 9667	roche.bester@itrafrica.com
ITR Africa	East London	Area Manager	Shaun Smith	043 748 3541	079 948 2965	shaun.smith@itrafrica.com
ITR Africa	Pinetown	Area Manager	Quintin Pillay	031 941 1133	079 492 4519	quintin.pillay@itrafrica.com
ITR Africa	Bloemfontein	Area Manager	Jacques Billing	051 011 5620	082 928 1964	jacques.billing@itrafrica.com
ITR Africa	Windhoek	Director	Hanjo Schierschmidt	+264 83 331 5160	+264 81 155 5539	hanjo.schierschmidt@itrafrica.com
ITR Africa	Kitwe	Director	Andre Snyders	+260 96 351 3429	+260 96 351 3429	andre.snyders@itrafrica.com
J&T Earthmoving Maintenance	Kempton Park		Alex Savage		081 895 5583	alex@earthmovingmaintenance.co.za
Jacobs Transport	Vereeniging	Sales	Gys Jacobs	010 200 9946	083 544 0275	gys@jacobstransport.co.za
JBS Plant Hire	Klerksdorp		Tonie van den Heever	018 469 1016/7	083 654 7809	jjvdh@lantic.net
Johnson Taylor	JHB	Sales Manager	Graham	011 614 5122		graham@johnsonf.co.za
JW Plant Hire and Sales	Welkom	Sales	Leon	057 355 1119	083 253 6110	j.w.plant@telkomsa.net
Kaltire			Jacques Roux	012 548 9327	083 777 9497	jacques_roux@kaltire.com
Kappa Engineering		Managing Director	Gerrie Visagie	011 828 5506/8	082 575 2199	gerrie@kappaeng.co.za
Kappa Engineering Procurement		Rebuild Director	Nathaniel Hauptfleisch	011 828 5506/8	082 928 6312	nathaniel@kappaeng.co.za
KDH Hydraulics	JHB		Ricus	011 762 9001/2	071 678 3746	ricus@kdhydraulics.co.za
Keegan Sansom			Keegan	039 975 3039	079 872 8948	keego17@gmail.com
Kemach	JHB			011 826 6710		sales@kemachjcb.co.za
Kemach	Middleburg			013 244 1839		sales@kemachjcb.co.za
Kemach	Pretoria			012 548 2956		sales@kemachjcb.co.za
Kemach	Bloemfontein			051 432 3978		sales@kemachjcb.co.za
Kemach	Durban			031 700 8278		sales@kemachjcb.co.za
Kemach	Richards Bay			035 751 2718		sales@kemachjcb.co.za

COMPANY	BRANCH	DESIGNATION	CONTACT	TEL NO	CELL	EMAIL
Kemach	CPT			021 949 7442		sales@kemachjcb.co.za
Kemach	Port Elizabeth			041 453 1819		sales@kemachjcb.co.za
Kemach	East London			043 732 1902		sales@kemachjcb.co.za
Kemach	George			044 878 0366		sales@kemachjcb.co.za
Kemach	Mthatha			047 531 1688		sales@kemachjcb.co.za
KHD Electrical			Delville Kuhn	011 392 4444		delville@khdiesel.co.za
Kholwa Equipment Solutions	JHB	Sales Director	Brian Stevenson	+27 68 250 7980		sales@armourplant.co.za
Kholwa Equipment Solutions	JHB	Sales	Rouxbann Baumann	+27 83 245 9330		sales@armourplant.co.za
Kholwa Equipment Solutions	JHB	Sales	Brendon Haydon	+27 72 757 2078		sales@armourplant.co.za
Komatsu	Cape Town	Sales	Frederick van Ryneveld	021 951 1251	082 317 2849	info@komatsu.co.za
Komatsu	Bloemfontein	Sales	Ian Banham	051 434 2221/2		ian.banham@komatsu.co.za
Komatsu	Gauteng	Sales	Graeme Armstrong	011 923 1000		Graeme.Armstrong@komatsu.co.za
Komatsu	Gauteng	Sales	Karen van der Walt	011 923 1000		Karen.vanderWalt@komatsu.co.za
Komatsu	Gauteng	Sales	Francois Griesel	011 923 1000		Francois.Griessel@komatsu.co.za
Komatsu	Kimberley	Sales	Jaco Van Heerden	053 832 2061		jaco.vanheerden@komatsu.co.za
Komatsu	Pinetown	Sales	Jacques van der Sandt	031 710 4950	082 888 0995	info@komatsu.co.za
Komatsu	Port Elizabeth	Sales	George Hyman	041 452 6555	082 882 9576	george.hyman@komatsu.co.za
Komatsu	White River	Sales	Fortune Mathiba	013 758 9900	083 675 1756	Fortune.mathiba@komatsu.co.za
Komatsu	Wolmeransstad	Sales	Piet du Toit	018 956 2244	083 271 3567	info@komatsu.co.za
Komax Spares	JHB		Jacques	011 664 8828	082 616 1654	jacques@jsaeath.co.za
Komax Spares	JHB		Gawie	011 664 8828	082 650 0505	
Komax Spares	JHB		Danie	011 664 8828	076 222 2708	
Kovobel SA	JHB	Sales	Mathew		083 973 1378	mathew@maspower.co.za
Kruiper Spares	Port Elizabeth	Sales	Gary	041 585 6455	083 321 0819	kruiper@global.co.za
Kruiper Spares	Port Elizabeth	Sales	Bill	041 585 6455	082 569 2740	kruiper@global.co.za
Kruiper Spares	Port Elizabeth	Sales	Philip	041 585 6455	083 235 3919	kruiper@global.co.za
Landboupart	Isando			011 966 9200		info@landboupart.com
Lee's Dozers	JHB		Lee Bray	071 687 9274		leeb@leesdozers.co.za
Leo Hydraulics				011 976 1941		admin1@leohydraulics.co.za
LIMCAT	Polokwane	Sales		015 004 0591		limcat@caterlim.co.za
LiuGong Machinery SA	JHB	Parts		011 979 3636		admin.za@burgersafrica.com
LNE Agri Earth (Pty) Ltd	JHB	Sales	Johann	0861 888 008	067 775 2430	J@LNE-AgriEarth.com
LNE Agri Earth (Pty) Ltd	JHB	Sales	Juan	0861 888 008	067 775 2430	C@LNE-AgriEarth.com
LNE Agri Earth (Pty) Ltd	JHB	General Manager	Guillaume	0861 888 008		G@LNE-AgriEarth.com
LNE Agri Earth (Pty) Ltd	JHB	Managing Director	Alani	0861 888 008	083 327 3237	LNE@LNE-AgriEarth.com
LPM Procurement	Germiston	Office	Linda Patricio	011 776 9160	083 637 7122	info@lpmprocurement.co.za
M.C Truck King	JHB	Sales Manager	Chezlin Abrahams	065 547 5131	065 547 5131	psales1mctp@gmail.com
MS Moils Africa						
Machinery Contractors	Brits		Wayne	012 250 3534		wayne@machinerycontractors.co.za
Mae Equipment	Witbank	Sales	Thomas Mittag		072 545 6223	info@mae-equipment.com
Mafika Engineering	JHB			011 334 1120		info@mafika.co.za
Manitou Southern Africa	JHB	Sales		010 601 3000		info.msa@manitou-group.com
Marange Plant & Mining	Bloemfontein		Maryke	053 841 0415	082 296 9810	maryke@marange.co.za
Marsay Equipment	Johannesburg		Tim Marsay	011 781 7410	083 654 4248	tim@marsayequip.co.za
Masslift Africa Mitsubishi Forklifts Dbn		Product Support/Spares	Brandon	031 700 8480	078 697 6161	Brandon@mlift.co.za
Mayfair Gearbox	JHB	Sales	Tyron Knott	011 493 8687	079 495 7224	tyron@mfgb.co.za
McKenzie Plant	Sales	Richmond/KZN	Stuart McKenzie	033 212 2181	082 558 7901	sjm@mckenzieplant.co.za
MHS Plant	JHB	Sales	Conrad	010 500 6193	082 781 9481	conrad@mhsplant.com
Midplant Services	JHB	Sales	Kellas	011 967 0055/60	083 675 1385	sales@midplant.com
Midplant Services	JHB	Sales	Jeff	011 967 0055/60	083 657 6123	sales@midplant.com
Midplant Services	JHB	Sales	Lee	011 967 0055/60	083 459 1695	sales@midplant.com
Milltech Engineering			Neil	011 421 7821	083 460 6510	neil@milltech-eng.com
Multi One Evolution	Benoni		Lofty Van Wyk		082 888 8899	info@multi-one.co.za
Mzantsi Transmissions	Johannesburg	Sales	Darryl Cilliers	011 868 5130	071 684 5784	info@gearboxes.me
N12 Truck Yard	Delmas – Mpumalanga				013 661 1039	sales@n12truckyard.co.za
Nduna Spares	Steelport		Natasha Reynders	013 230 3852		ndunasparers@gmail.com
New Beginnings Designs	JHB		Suken	011 791 4120	082 923 7987	suken@nbdesigns.co.za
NUCO Auctioneers	Dooringkloof East Pretoria		Jaco De Jager		011 206 8963	jaco@nucoauctioneers.com
One Stop Procurement	Benoni		Roger Melenas	011 420 1003	079 493 4486	roger@onesp.co.za
P&R Earthmoving	JHB	Sales	Scott	010 823 6385		scott@prearthmoving.com
P&R Earthmoving	JHB	Sales	Grant	010 823 8821		grant@prearthmoving.com
P&R Earthmoving	JHB	Sales	Ladis	010 823 7322		ladislas.l@pandrearthmoving.com
P&R Earthmoving	JHB	Sales	Greg	010 823 6276		greg@prearthmoving.com
P&R Earthmoving	JHB	Sales	Kyle	010 823 6385		kyle@prearthmoving.com
P&R Earthmoving	JHB	Sales	Conrad	010 823 7972		conrad@pandrearthmoving.com
P&R Earthmoving	JHB	Sales	Rikus			rikus@prearthmoving.com
Pacific Construction Equipment		Fairleads Benoni	Mark	011 453 1567	082 441 4587	markivan@mweb.co.za
Paramount Tracks	JHB	Sales		010 007 3258	082 894 5547	sales@paramounttracks.com
Paul Heslop Plant Services			Paul Heslop	086 111 5422	074 101 8239	paul@pixie.co.za
PEX Hydraulics	Cape Town	Sales	Nick Kotzee	021 556 3232		nick@pex.co.za
PEX Hydraulics	Johannesburg	Sales	Clinton MacDougall	011 882 8413	082 652 8897	clinton@pex.co.za
Pex Hydraulic Repairs	KZN	Sales	Priscilla Shanker	031 705 5050	084 429 8654	priscilla@pexkzn.co.za
Pilot Crushtec	JHB			011 842 5600		sales@pilotcrushtec.co.za
Plant Finder	PE		Shawn Michell	041 379 1717	082 568 4033	shawn@plantfinder.co.za
Powertrans Rebuild Centre	Isithebe		Ricky Naidoo	032 459 5700	082 555 4925	info@powertrans.co.za
Power Transmissions Technology Benoni			William	011 022 8570		info@pttech.co.za
Primeplant	JHB		Francois	011 979 4853	066 489 4892	sales2@primeplant.co.za
Primeplant	JHB		André	011 979 4853	066 489 4893	sales3@primeplant.co.za
Pro Link Hydraulics	Pretoria	Manager	Chris Botha	012 007 0278/205/206	082 327 8683	workshop@myprolink.co.za
Pro Link Hydraulics	Pretoria	Workshop Manager	Jacques Botha	012 007 0278/205/206	082 374 0582	workshop@myprolink.co.za
Pro Link Hydraulics	Pretoria	Counter	Riaan van Dyk	012 007 0278/207	082 419 0936	counter@myprolink.co.za
Pro Link Hydraulics	Pretoria	Seals Sales	Charles Valchar	012 007 0278/208	082 546 5662	seals@myprolink.co.za
Queensburgh Plant Sales	JHB	Used Sales	Wikus	011 964 1631	083 235 5665	qpsales@mweb.co.za
Queensburgh Plant Sales	JHB	New Sales	Albert	011 964 1467	082 652 4907	qpsales@mweb.co.za

Quip Finda	Port Alfred	Sales	Deryck		076 551 2637	ctcplantinterafrika@gmail.com
R21 Trucks	Centurion	Sales Manager	Mark Noble	011 206 8958	082 226 2220	mark@r21trucks.co.za
Ramm Parts	Witbank		Adriaan	076 127 2977		adriaan@rammparts.co.za
Ramm Parts	Witbank		Rodney	073 103 9582		
Ramm Parts	Witbank		Mark	072 530 7373		marc@rammparts.co.za
Randle Parts	KZN	Sales	Stan		083 653 4270	
Randle Parts	KZN	Sales	Justin		083 639 1982	justin.cope@randleparts.co.za
Randle Parts	KZN	Sales	Geoff		074 843 5298	
Rankin Training	DBN		Marcel	031 702 8447	082 909 9070	marcel@rankintraining.co.za
Reef Fuel Injection Services	JHB	Manager	Warren Hauser	011 873 2354		warren@reeffuel.co.za
Rent a Dozer	Marble Hall	Owner	Theodor Kleynhans	013 261 1746	083 459 5593	admin@rentadozer.co.za
Replacement Spares Unltd. /	RSU Pretoria	Sales	Paul Pelser	012 803 8714		paul@rsu.co.za
Revaro	Gauteng	Sales	WhatsApp no	083 898 5516		
Revaro	Gauteng	Sales	Nathan	+27 11 794 8271	060 402 5256	sales@revaro.co.za
Revaro	Gauteng	Sales	Morne	+27 11 794 8271	073 829 3078	sales@revaro.co.za
Revaro	Gauteng	Sales	Marcel	+27 11 794 8271	083 396 5816	sales@revaro.co.za
Revaro	Gauteng	Parts Sales	Daniel C	+27 11 794 8271	063 161 7854	sales@revaro.co.za
Rham Equipment	Olifontsfontein		Michael Combrink	011 203 7900		info@rham.co.za
Rhino Excavator Hammers	JHB		Paul	086 111 5422	074 101 8239	sales@rhinohammers.co.za
Rhino Excavator Hammers	JHB		Clive	(011)397 3327	071 670 8707	sales@rhinohammers.co.za
Ritchie Bros.	UAE		Alex Zachos		+971 506 424113	azachos@ritchiebros.com
Rocktech Earthmoving Wearparts	JHB	Manager	Derek Swift	011 793 6838	082 561 4682	derek@rocktech.co.za
Roger's Undercarriage	JHB			011 964 2695	083 974 5851	rogers.uc@mweb.co.za
Rondebult Construction Machines	Bronkhorstspuit			013 933 3643		sales@rondebult.co.za
Ruspet Exhausts	JHB		Russell	011 827 2824	083 448 7669	russell@ruspet.co.za
SS Mining Equipment	KZN	Director	John Syme		083 233 2844	john@ssminingequipment.com
Safety Grip	JHB	OTR S/Manager	Tewus Wesse	011 708 6660	083 639 2290	tewus@safetygrip.co.za
Scotty's Plant Hire	Pinetown		Ashley Scott	031 700 8000		scottys.plant@mweb.co.za
Scotty's Plant Hire	Pietermaritzburg		Ashley Scott	033 386 1653/14		scottyspmbsales@mweb.co.za
Sclanders Mech Natal		Sales	Ivan Kaisten	031 700 8083	083 653 3724	ivan@schlandermech.co.za
Sew's Plant & Civils	KZN		Sunash	031 507 2491	082 284 5082	info@sews.co.za
Shin Li Trading	Johannesburg		Office	011 396 1081		sales@shinlitrading.co.za
Shin Li Trading	Johannesburg		Chantell	011 396 1081	079 872 0465	sales2@shinlitrading.co.za
Shin Li Trading	Johannesburg		Riaan	011 396 1081	064 757 1129	sales4@shinlitrading.co.za
Shin Li Trading	Johannesburg		Dylan	011 396 1081	082 555 3058	sales5@shinlitrading.co.za
Shonakhona Logistics				032 943 3428	073 188 2004	
Sino Plant	Gauteng	Sales Manager	Mark Noble	011 206 8958	082 226 2220	mark@sinoplant.co.za
Spec-Cast Wear Parts	JHB	Sales Manager	Joe Venter	011 396 1713	074 134 5507	undercarriage@spec-cast.co.za
Spec-Cast Wear Parts	Middelburg	Sales	Herman Bezuidenhout	013 813 1413	072 187 6943	herman@spec-cast.co.za
Spec-Cast Wear Parts	Kathu, N/Cape	Sales	Ilse van Rooi	053 010 1304	067 414 8832	northerncape@spec-cast.co.za
Sintech	JHB	Sales	Jacob Nkabinde	011 823 2359		sales@sintech.co.za
SparePower	JHB	Parts Sales		011 845 4184	082 457 2804	terry@sparepower.co.za
STM Mining	JHB	Sales	Barney v Rooyen	011 894 6192	072 086 6163	barney@stmmining.co.za
Tambani Hydraulics	JHB		Lee Bray	071 687 9274		lee@tamhyd.co.za
The CAT Rental Store / Barloworld		Durban		(031)569 8500	082 909 9188	mnicolia@barloworld-equipment.com
The Seat Connection	JHB	Sales	Lydia/Graham	011 452 6802/6814		info@seatconnection.co.za
Think Generator	Gauteng	Sales	Mathew		083 973 1378	mathew@thinkgenerator.co.za
Think Generator	Gauteng	Sales	Andre		082 607 6077	andre@thinkgenerator.co.za
TJB Earthmoving Parts Buying	JHB		Brad	+27 71 154 3786		brad@tjbearthmoving.co.za
Talmac Machine Tools	JHB	Sales		+27 11 827 6539		info@talmac.co.za
Tommy's Auto Parts	Newcastle		Ahmed	034 375 8111	072 889 2581	exportintl@aol.com
Teeth Boyz	JHB	Sales	David		079 498 5417	
Teeth Boyz	JHB	Sales	Jason		062 055 7910	
Tractor and Grader Supplies	JHB	Sales	Jeannine	011 392 7533		jeannine@tags.co.za
Tractor and Grader Supplies	Witbank	Sales	Marcus	082 921 8634		marcusv@tags.co.za
Tractor and Grader Supplies	Witbank	Sales		013 492 2399		marcusv@tags.co.za
Tractor and Grader Supplies	Durban	Sales	Theo	082 553 7663		theo@tags.co.za
Tractor and Grader Supplies	Cape Town	Sales	Neal Simpson	082 606 7366		neal@tags.co.za
Tractor and Grader Supplies	Swaziland	Sales	Tiago	+268 2 518 4548		tiago@tags.co.za
Tractor and Grader Supplies	Namibia	Sales	Handre	+264 61 264710/1/2		handre@powerpartsnamibia.co.za
Transand			Fran cois Gerber	044 695 0105	082 454 0934	charlesjnr@transand.net
Trax Global	JHB		Steve	082 954 6253		steve@traxglobal.co.za
Trax Global	CPT		Eddie	082 697 0534		parts@traxglobal.co.za
Trax Global	CPT		Bev	083 505 8955		bev@traxglobal.co.za
Trysome cc	JHB	Supplies	Jaco	(011)823 5650		jaco.vandermerwe@trysome.cc
TTC Engineering & Hydraulics	JHB		Owner Tino	011 845 2837	082 822 4676	tino@ttcenghyd.co.za
TTC Engineering & Hydraulics	JHB		Admin Chanel	011 845 2837		admin@ttcenghyd.co.za
Turboworks	Centurion	Sales		012 653 7507	082 824 8037	sales@turboworks.co.za
Turbo Direct	Isando	Sales		011 392 5195		
Ultimate Exchange Components	JHB	Sales	Clifford van Ryneveld		078 854 7696	clifford@uecpty.co.za
Ultimate Exchange Components	JHB	Sales	Cois		064 591 2591	cois@uecpty.co.za
Unity	JHB	Sales		011 845 1630	082 457 0221	unitysalesandservices@gmail.com
VR Diesel & Turbo			Wayne	013 246 1003	083 310 9235	wayne@vrdiesel.net
Vendal Civils	JHB		Anton	011 801 4911/2	082 923 5397	vendels@mweb.co.za
Vendel Equipment Sales	JHB	Sales	Jaap	011 801 4911/2	082 892 1327	associated1@xnet.co.za
Vhavenda Bricks	Louis Trichardt	Sales	Pieter Lordan		082 577 5406	pieter@vhavendabricks.co.za
Vita Plant & Equipment	Brits	Machine Sales & Repairs	Costa Voyiatzakis	012 252 2915	082 521 7095	nicholas@vitaplant.co.za
Vortex transmissions	JHB		Johan	011 452 4430	082 333 1005	vortex@mweb.co.za
Vortex transmissions	JHB		Jan	011 452 4430	082 333 1004	vortex@mweb.co.za
WH Auctioneers	Midrand	Sales	Shannon	011 574 5700	084 520 5000	info@whauctions.com
WH Auctioneers	Midrand	Sales	Mathew	011 574 5700	084 252 5000	info@whauctions.com
WH Auctioneers	Midrand	Sales	Tim	011 574 5700	082 371 1069	info@whauctions.com
WAHA Equipment	Midrand	Sales	Will	011 574 5728	076 037 9516	will@waha.co.za
Wearpact	JHB	Sales	Linda	011 845 3234	083 453 3960	mwwrp@mweb.co.za
Weichai	JHB	Parts	Barry Fang		072 399 9817	bm@semrsa.co.za
WesTrac	AUS		Ron Lanzon	+61 418 927 625		Ronald.Lanzon@westrac.com.au
Wilson Plant	CPT	Sales	Miles Wilson	021 534 9536	082 928 9215	admin@wilsonplant.co.za
Yellow Metal SA	Pretoria	Sales	Pieter Botha	011 970 1299	082 805 8220	sales@ymsa.co.za
ZF Services South Africa	JHB	Sales: Service Parts	Warren Viviers	(011)457 0031	082 776 2759	warren.viviers@zf.com
ZF Services South Africa	JHB	Workshop:Off-road division	Christo Uys	(011)457 0091		christo.uys@zf.com
Zoomlion	JHB	Sales	Eric XI		072 712 0957	eric@aspower.co.za

WEICHAI
PRODUCT SUPPORT AT ITS BEST



OUR BRANDS & OUR PARTNERS





We have your **WISH LIST** Covered

- ✓ Peace of mind - Extended Warranty
- ✓ Security - Fleetm@tic® Tracking
- ✓ Confidence - Operator Training
- ✓ Convenience - Special Tools
- ✓ Reassurance - Quality Parts
- ✓ Savings - Remanufactured Parts
- ✓ Performance - Lubricants
- ✓ Well-being - Care Packages

**CONTACT US TO EXPLORE HOW OUR AFTERMARKET
OFFERINGS CAN ADD VALUE TO YOUR BUSINESS.**

FOLLOW US    

Contact your nearest BELL Customer Service Centre for more information
www.bellequipment.com

**Strong Reliable Machines
Strong Reliable Support**

BELL