

your sourcing solution for new & used equipment & machinery

# earthbroker

email: [janine@earthbroker.co.za](mailto:janine@earthbroker.co.za) web: [www.earthbroker.co.za](http://www.earthbroker.co.za)

volume 20 | issue 1 January 2024

ON THE RIGHT TRACK WITH

# CEN TRAX

Since 1974

[www.centraxsa.co.za](http://www.centraxsa.co.za)

Head Office: Tel: (011) 392 5055  
(011) 392 5056  
Fax: (011) 392 3091  
Durban Branch: Tel: 086 123 6872  
Fax: 086 529 4683  
Steve: 083 613 0664

**CELEBRATING 50 YEARS OF EXCELLENCE**

**EXPERTS IN UNDERCARRIAGE & WEAR PARTS**



**TRACK WORKSHOP  
IDLER REBUILD FACILITY**

**UNDERCARRIAGE  
G.E.T.**

- **IDLER REBUILD FACILITY**
- **TRACK WORKSHOP**
- **UNDERCARRIAGE**
- **GROUND ENGAGING TOOLS**



Manufacturers names, numbers and descriptions are used for reference purposes only & is not implied that any parts listed is the product of these manufacturers.



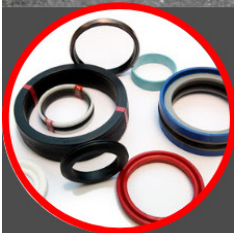


504 Pretoria Road, Fairleads, Benoni 1501


TEL: 011 1003/1865

• Seals • Bearings • Hydraulic Components


WE PROVIDE OUR CUSTOMERS WITH THE BEST SERVICE, WITH TEN YEARS EXPERIENCE IN THE INDUSTRY




-SEALS-




-BEARINGS-




-TOOLS &  
INDUSTRIAL  
SUPPLIES-



-CHROMESTOCK-



-Hydraulics-



-Plastic Engineering-

-BRANDS WE CATER FOR-







## Contact Details

Sales Manager & Editor  
**Janine Sargeant**  
083 456 4027

Design / Layout  
**Dylan McDonald**  
082 485 3001

Sales Contact  
083 456 4027

Electronic Origination & Printing  
ROC Media

The Editors welcome articles and photographs, which will be considered for publication on their merit.

**Disclaimer:** The Editors and Publisher do not necessarily endorse any views or statements made by contributors.

**Janine Sargeant**  
083 456 4027  
(FAX) 086 685 1258  
janine@earthbroker.co.za

**Physical Address:**  
Unit 9A, Bishop's Court,  
8 Delamore Rd,  
Hillcrest, Durban, 3610

**Postal Address:**  
P.O. Box 2484,  
Hillcrest,  
3650

**Banking Details:**  
Earthbroker  
First National Bank  
Hillcrest  
Code: 223726  
Account No.: 62295649308



Audit Bureau of Circulations  
of South Africa

We are ABC accredited



Manufacturer's names, numbers & descriptions are used for reference purposes only & it is not implied that any part listed is the product of the manufacturers.



## Beyer's Truck and Plant

Company profile



## Brakecore Supply Co.

Company Profile



## Centrax SA

The market leader in the supply of quality wear parts and undercarriage to the mining and construction industry for 50 years



## Shumani

Shumani opens Cape Town office to service the Western Cape region



## Smith Power Equipment

Narrowing down forklift choices

## Industry News

Stay up to date with the latest Industry news

## Contents

<b>Advertisers Index</b>	<b>88-89</b>	<b>LIMCAT</b>	<b>18</b>
<b>All Africa supplies</b>	<b>42</b>	<b>MAE Equipment</b>	<b>32-33</b>
<b>AmPlant</b>	<b>12</b>	<b>Mayfair Gearbox</b>	<b>55</b>
<b>Atlas Masjiene</b>	<b>19</b>	<b>McKenzie Plant Sales</b>	<b>24</b>
<b>Bell Equipment</b>	<b>43,96</b>	<b>Mid Plant Services</b>	<b>62-63</b>
<b>Benetrax Machinery</b>	<b>5</b>	<b>Mzantsi Transmissions</b>	<b>12</b>
<b>Beyers Truck and Plant</b>	<b>7</b>	<b>New Beginning Designs</b>	<b>70</b>
<b>BLC Plant</b>	<b>48</b>	<b>One Stop Procurement</b>	<b>2</b>
<b>BLC Trucks</b>	<b>49</b>	<b>Paramount Group</b>	<b>61</b>
<b>BLC Parts &amp; Components</b>	<b>50</b>	<b>Plant Finder</b>	<b>26</b>
<b>Blumaq South Africa</b>	<b>28-29</b>	<b>Power Transmission Technology</b>	<b>36</b>
<b>Brakecore Supply Co.</b>	<b>11</b>	<b>Prime Plant</b>	<b>54</b>
<b>CTC Plant Company</b>	<b>30</b>	<b>Pro Link Hydraulics</b>	<b>60</b>
<b>Caliber Machinery</b>	<b>27</b>	<b>RC Earthmoving Investments</b>	<b>24</b>
<b>CATERLIM</b>	<b>18</b>	<b>Rhino Excavator Hammers</b>	<b>72</b>
<b>Centrax</b>	<b>1,13-15</b>	<b>Rocktech</b>	<b>4</b>
<b>Changlin</b>	<b>24</b>	<b>Rondebult Construction Machines</b>	<b>9</b>
<b>Dozer Earthmoving</b>	<b>68-69</b>	<b>Ruspet Exhausts</b>	<b>8</b>
<b>Dura Equipment Sales</b>	<b>37</b>	<b>Shin Li Trading</b>	<b>38</b>
<b>Dura Parts</b>	<b>31,58</b>	<b>Sintech</b>	<b>73</b>
<b>EarthComp Earthmoving</b>	<b>35</b>	<b>Spec-Cast Engineering</b>	<b>8</b>
<b>Earth Mach</b>	<b>59</b>	<b>Spec-Cast Wear Parts</b>	<b>64-67</b>
<b>East Coast Gears</b>	<b>24</b>	<b>STM Mining</b>	<b>52-53,74</b>
<b>Equipment Parts &amp; Engines</b>	<b>39</b>	<b>The Seat Connection</b>	<b>18</b>
<b>ESP</b>	<b>20-23</b>	<b>TraxGlobal</b>	<b>25</b>
<b>Gears for Africa</b>	<b>40</b>	<b>Turbo Direct</b>	<b>51</b>
<b>Great North Power Solutions</b>	<b>18</b>	<b>Ultimate Exchange Components</b>	<b>41</b>
<b>Handax Machinery</b>	<b>16-17</b>	<b>VE Sales</b>	<b>46-47</b>
<b>Hurricane Diesel</b>	<b>34</b>	<b>Vortex Transmissions</b>	<b>77</b>
<b>Industrial Plant Solutions</b>	<b>76</b>	<b>Weichai &amp; SEM Parts</b>	<b>95</b>
<b>ITR Africa</b>	<b>56-57</b>	<b>Wearpact</b>	<b>75</b>
<b>Inmine - Inala Mining Services</b>	<b>44-45</b>	<b>Machine Classifieds</b>	<b>84-87</b>
<b>JD Hoffman Earthmoving</b>	<b>39</b>	<b>Quick Reference</b>	<b>91-94</b>
<b>LNE Agri Earth (Pty) Ltd</b>	<b>71</b>		
<b>Landbou Parts</b>	<b>39</b>		





# ROCKTECH

ROCKTECH ESIZAYO AFRICA (PTY) LTD

OUTWORLD: [www.outworld.co.za](http://www.outworld.co.za)

**Suppliers of  
Quality Half Arrow Profiles**

**19MM, 29MM, 40MM NOW IN STOCK**

**500BN THRU-HARDENED**



**BEST PRICES GUARANTEED**  
**Delivering QUALITY & PERFORMANCE**

Tel: +27 11 793 6838 | Fax: +27 11 793 6626  
Web: [www.rocktech.co.za](http://www.rocktech.co.za) | Email: [Russell@rocktech.co.za](mailto:Russell@rocktech.co.za)



# ENSIGN

# D50 FORKLIFT

## QUOTATION FOR THE SUPPLY OF A NEW ENSIGN D50 FORKLIFT WITH 4.5m CONTAINER MAST

MODEL	CPCD-G50 ENSIGN D50
RATED POWER	60kW@2200rpm
OPERATING WEIGHT	6850kg
MAIN SPECIFICATIONS	
ENGINE	Xinchai 4D35ZG31
TYPE	4 Cylinder, 4 Stroke, Diesel Engine, 500Nm/1600rpm
HYDRAULIC TRANSMISSION	
SIDE SHIFTER	
RATED LIFTING CAPACITY	5000kg
LOAD CENTRE DISTANCE	600mm
MAX LIFTING HEIGHT	4500mm
FREE LIFTING HEIGHT	160mm
TILTING ANGLE	: FORWARD 60
	: BACKWARD 120
MAX LIFTING SPEED	: LOADED 440 mm/s
	: UNLOADED 500 mm/s
MAX LOWERING SPEED	: LOADED 430 mm/s
	: UNLOADED 350 mm/s
MAX DRIVING SPEED	: LOADED 22 km/h
	: UNLOADED 23 km/h
MIN TURNING RADIUS	3300mm
GRADEABILITY	: LOADED 20%
	: UNLOADED 25%
WIDTH	150mm
HIGHT	50mm
LENGTH (excluding forks)	1220mm
MIN GROUND CLEARANCE	169mm
WHEELBASE	2100mm
TYRES	Pneumatic tyres



### STANDARD EQUIPMENT

- Roof mounted strobe light

\*ALL PRICES ARE QUOTED FOB BOKSBURG. DELIVERY TO STIE CAN BE ARRANGED AT CLIENT'S EXPENSE

# ENSIGN

# D70 FORKLIFT

## QUOTATION FOR THE SUPPLY OF A NEW ENSIGN D70 FORKLIFT WITH 3m MAST

MODEL	CPCD-G70 ENSIGN D70
RATED POWER	85kW@2200rpm
OPERATING WEIGHT	9550kg
MAIN SPECIFICATIONS	
ENGINE	FAW
TYPE	4 Cylinder, 4 Stroke, Diesel Engine, 500Nm/1600rpm
HYDRAULIC TRANSMISSION	
SIDE SHIFTER	
RATED LIFTING CAPACITY	7000kg
LOAD CENTRE DISTANCE	600mm
MAX LIFTING HEIGHT	3000mm
FREE LIFTING HEIGHT	195mm
TILTING ANGLE	: FORWARD 60
	: BACKWARD 120
MAX LIFTING SPEED	: LOADED 500 mm/s
	: UNLOADED 520 mm/s
MAX LOWERING SPEED	: LOADED 360 mm/s
	: UNLOADED 400 mm/s
MAX DRIVING SPEED	: LOADED 25 km/h
	: UNLOADED 30 km/h

MIN TURNING RADIUS	3400mm
GRADEABILITY	: LOADED 20%
	: UNLOADED 25%
WIDTH	2000mm
HIGHT	2500mm
LENGTH (excluding forks)	3580mm
MIN GROUND CLEARANCE	200mm
WHEELBASE	2250mm
TYRES	Pneumatic tyres

### STANDARD EQUIPMENT

- Roof mounted strobe light

\*ALL PRICES ARE QUOTED FOB BOKSBURG. DELIVERY TO STIE CAN BE ARRANGED AT CLIENT'S EXPENSE.



### GAUTENG (HEAD OFFICE):

44 VIEWPOINT ROAD  
BARTLETT, BOKSBURG, 1459  
GAUTENG, SOUTH AFRICA  
TEL: +27 (0)11 397 1313

### CAPE TOWN:

WILLEMSRUST FARM  
BOTTELARY ROAD  
KUILSRIVIER  
TEL: +27 (0)71 599 5424

# BENETRAX MACHINERY

[WWW.BENETRAX.CO.ZA](http://WWW.BENETRAX.CO.ZA) • [SALES@BENETRAX.CO.ZA](mailto:SALES@BENETRAX.CO.ZA)



**SHANTUI**

**REVARO**

**XCMG**

**POWERSTAR**  
trucks built to last



**B**eyers Truck and Plant is a dynamic new company that has quickly established itself as a trusted dealer for Revaro, Powerstar, Shantui, and XCMG in the Westrand and Gauteng regions. Despite being a relatively young company, Beyers boasts a team of experienced professionals with over 20 years of collective industry knowledge. This expertise, coupled with their commitment to providing exceptional customer service, has made Beyers a go-to destination for a wide range of trucks, forklifts, front-end loaders, diesel gensets, ATVs, graders, bulldozers, road rollers, excavators, and TLBs.

Beyers Truck and Plant takes pride in offering only the highest quality products from world-renowned brands, ensuring that their customers receive equipment that is known for its durability, performance, and reliability. Their extensive product selection caters to a diverse range of industries and applications, making Beyers a one-stop shop for all your trucking and yellow metal equipment needs.

In addition to their impressive product offerings, Beyers Truck and Plant goes the extra mile by providing a comprehensive range of after-sales services to keep your equipment running smoothly. From routine servicing and repairs to parts supply, Beyers is dedicated to ensuring that your equipment remains in top condition, maximizing productivity and minimizing downtime.

Whether you're an established industry veteran or a new entrant into the world of trucks and yellow metal equipment, Beyers Truck and Plant is your trusted partner for all your needs. Their combination of industry expertise, product quality, and exceptional service makes them the ideal choice for those seeking a reliable and experienced dealer. Contact Beyers Truck and Plant today to discover how they can help you achieve your business goals.



### Morné Parkinson

Sales Executive

+27 73 289 3078

[morne.parkinson@truckandplant.co.za](mailto:morne.parkinson@truckandplant.co.za)



### Adriaan Groenewald

Sales Consultant

+27 73 309 8912

[adriaan.groenewald@truckandplant.co.za](mailto:adriaan.groenewald@truckandplant.co.za)



### Daniel Roos

Sales Consultant

+27 73 260 7566

[daniel.roos@truckandplant.co.za](mailto:daniel.roos@truckandplant.co.za)



### Monique Frank

Sales Consultant

+27 78 167 4710

[monique.frank@truckandplant.co.za](mailto:monique.frank@truckandplant.co.za)



### Twanette Meyer

Sales Consultant

+27 68 747 7720

[twanette.meyer@truckandplant.co.za](mailto:twanette.meyer@truckandplant.co.za)



**REVARO**

**POWERSTAR**  
westrand

**SHANTUI**  
VALUE THAT WORKS

**XCMG**

# T-REX710 & T-REX712

1 - 1.2T (rated Load) Tracksteers

# T-REX707 & T-REX708

730 - 830kg (rated Load) Skidsteers

Operating Weight:  
3,800kg - 4,500kg

Engine Net Power:  
42 - 48kW

Engine Net Power:  
55 - 74.9kW

Operating Weight:  
2,850kg - 3,100kg

• **Reliable** • **Efficient** • **Quality** • **Support**

We also keep a wide range  
of parts for our machines!



Scan to whatsapp

**WhatsApp:** 078 725 6917 | **Email:** [beyers@truckandplant.co.za](mailto:beyers@truckandplant.co.za)  
**Sales:** Morné: 073 289 3078 | Adriaan: 073 309 8912





**SPEC-CAST ENGINEERING**

*Trusted to deliver*

# Bulk Materials Handling Products

## Bucket Elevators



### Steel Buckets

Suitable for elevating sharp, bulk density materials



### HDPE Buckets

Suitable for handling large volumes of all types of grains, feed and most food products



### Nylon Buckets

Suitable for high impact & abrasion resistance. Better heat resistance and handling hot, abrasive and sticky materials

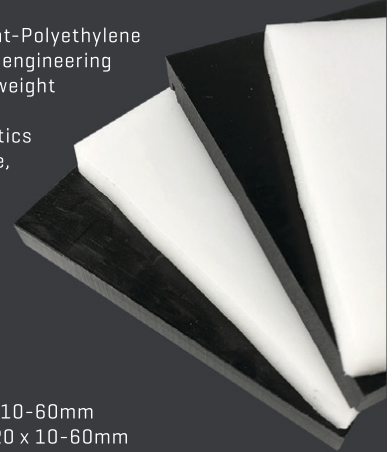
## HDPE & UHMWPE Sheets

Ultra-High-Molecular-Weight-Polyethylene (UHMWPE) is thermoplastic engineering material, and its molecular weight can reach 4.5 to 9 million. It combines many characteristics such as abrasion-resistance, impact resistance/absorption, chemical corrosion resistance, low temperature resistance and self-lubrication etc.

Available in Black or White

**HDPE SHEET:** 2000 x 1000 x 10-60mm

**UHMWPE SHEET:** 3080 x 1220 x 10-60mm



Contact our Bulk Materials Handling Specialist: Brian Jansen  
Cell: +27 71 147 6868 | Email: [brianj@spec-cast.co.za](mailto:brianj@spec-cast.co.za) | Tel: +27 11 396 1713/7 | [www.spec-cast.co.za](http://www.spec-cast.co.za)

### Russell at Head Office

Tel: 011- 827 2824/6

Fax: 011- 827 2850

[russell@ruspet.co.za](mailto:russell@ruspet.co.za)

[felicity@ruspet.co.za](mailto:felicity@ruspet.co.za)

WE MUFFLE THE INDUSTRY

# RUSPET EXHAUSTS

MANUFACTURERS OF TRUCK, BUS, EARTHMOVING & GENERATOR EXHAUSTS

### Ruspet Durban Branch

Storm Hill

Cell: 081 737 1598

[storm@ruspet.co.za](mailto:storm@ruspet.co.za)



**ALL OUR EARTHMOVING SILENCERS ARE MADE TO OEM SPEC.**  
**WE HAVE NUMEROUS SPECIFICATIONS FOR CATERPILLAR, KOMATSU AND BELL ETC.**







# RONDEBULT

CONSTRUCTION MACHINES

UNBEATABLE AFTERSALES SERVICE

MASSIVE PARTS INVENTORY

UNMATCHED QUALITY MACHINERY

IN-HOUSE FINANCE

Rondebult Construction Machines leads the construction, mining, agriculture, port operation, and warehouse industries with reliable machinery. We offer a wide range of high-quality equipment and provide state-of-the-art maintenance, warranties, and services. Our parts and maintenance divisions' infrastructure is of the best in the country.

From routine servicing to major breakdowns, extensive overhauls, and even complete rebuilding of machine gearboxes, transmissions, or differentials, we maintain extensive inventories of genuine spare parts. Rondebult Construction Machines is widely recognized as one of the fastest-growing leaders in the construction and mining equipment sector. Our sales and orders consistently surpass the highest expectations due to the strong demand for such equipment in South Africa.

Our mission for the past 20 years is to create sustainable and long - lasting relationships with clients by applying and strengthening the expertise we built over the years. Our service sets us apart from the rest with commitment and unmatched service.

**Tel: 013 933 3643/0800 014 548 | email: [sales@rondebult.co.za](mailto:sales@rondebult.co.za)**  
**[www.rondebult.co.za](http://www.rondebult.co.za)**





# BRAKECORE SUPPLY CO.

Tel: +27 (0)17 819 3412 | 5 Oosthuise str, Ermelo, 2350, South Africa  
[jaco@brakecore.co.za](mailto:jaco@brakecore.co.za) | [shane@brakecore.co.za](mailto:shane@brakecore.co.za) | [gerrard@brakecore.co.za](mailto:gerrard@brakecore.co.za)

Performance Through Quality



 BRAKECORE  
SUPPLY COMPANY



A little over 12 months ago, WPT Power formally partnered up with Brakecore Supply Company to further support the African clutch, brake, and PTO market. This development has brought a fresh approach to ensuring that the key market sectors for WPT Power are covered not only with supply but also by technical, workshop, and field-based capabilities.

## Forty Years of Experience

Celebrating their 40th anniversary in 2023, Brakecore Supply Company operates an impressive facility from its Ermelo, South Africa headquarters, and a further operation in Jet Park, Johannesburg. In addition, remote employees are stationed in key heavy industry areas to ensure that high service levels are maintained.

## Key African Markets

These key market sectors are coal, hard rock, seabed mining, steel manufacturing and forming, land- and off-shore-based energy, clay brick manufacturing, aggregates, road building, water movement, forestry, tree care, paper converting, and load testing or dynamometer applications. WPT Power and Brakecore Supply Company in Africa focuses on these sectors.

“With Brakecore’s capabilities to stock for the market, experienced long-term staff, technical capabilities, all stacked together with their like-minded dedication, it’s like dealing with ourselves,” said Brett Emson of WPT Power.

A large part of Brakecore’s business and history has been the dragline and wire rope shovel brakes. This compliments WPT’s mining brake range in such a way that it gives the African open-cast mining operations a dedicated partnership and flow between manufacturer, distributor, and end user. This recipe offers the market fast answers and smooth supply, and in turn, lowers overall costs. Armed with the complete WPT Power range, including industrial clutches, brakes, and engine-driven products, this same process can be applied to any market, regardless of the equipment you operate.

If you require any assistance, be it product supply, training, technical support, or rebuilds, please contact Brakecore Supply Company or WPT Power for further details.

*Written By: Brett Emson, Sales Manager Asia Pacific & Africa*



# **BRAKECORE SUPPLY CO.**

Tel: +27 (0)17 819 3412 | 5 Oosthuise str, Ermelo, 2350, South Africa  
jaco@brakecore.co.za | shane@brakecore.co.za | gerrard@brakecore.co.za

**Performance Through Quality**

**Industrial Clutches, Brakes & Engine-driven PTO Pumps**

**WPT POWER**  
® 



**Wet Brake Parts, Wheel Stations & Centre Portions**



**Ground Engaging Tools & Undercarriage**



**40 Years Anniversary**

**WET BRAKES • UNDERCARRIAGE • INDUSTRIAL BRAKES • AIRBRAKES • RADIATORS • BRAKES • CLUTCHES**





[www.AmPlant.co.za](http://www.AmPlant.co.za)



2No 2014 DOOSAN DA30



1No 2019 DOOSAN DA30



3No 2023 KOMATSU HM400-3R



1No 2020 CAT 730 | 3No 2021 CAT 730  
2No 2022 CAT 730



14No 2019 SCANIA G460 8X4  
MINING SPEC 20M3  
ROCK BODIES



1No 2022 KOMATSU WA380-6



1No 2022 KOMATSU PC850-8R1

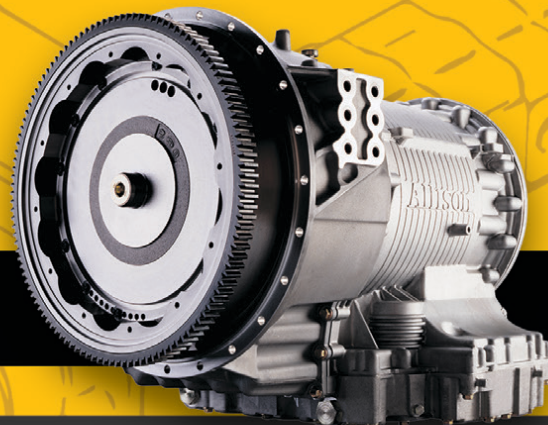
Contact Eddie Simpson 082 904 7694 | Email: [simpsons@amplant.co.za](mailto:simpsons@amplant.co.za)



# MZANTSI TRANSMISSIONS

6 Van der Bijl Street, Alrode South, Alberton

**We offer specialised transmission repairs  
for heavy duty & on highway machines**



**WE OFFER SPECIALISED TRANSMISSION REPAIRS  
FOR HEAVY DUTY & ON HIGHWAY MACHINES**

**BELL • TEREX • CAT • JOHN DEERE  
HITACHI • DAEWOO • ZF • ALLISON • CLARK • FUNK**

**We offer dyno testing on the following boxes:**

**ZF - 4WG92, 4WG94, 4/6WG180/200/210/310  
Allison - MD3560, HD4560**

**WE PURCHASE  
2ND HAND TRANSMISSIONS**

**Bell B17B, B20B, B25B, 1206 & B40D  
Transmissions in stock**

**Email:** [info@gearboxes.me](mailto:info@gearboxes.me) | **Tel:** 011 868 5130 | **Fax:** 086 634 7904 | **Cell:** 071 684 5784



ON THE RIGHT TRACK WITH

# CENTRAX

Since 1974

[www.centraxsa.co.za](http://www.centraxsa.co.za)

Head Office: Tel: (011) 392 5055  
(011) 392 5056  
Fax: (011) 392 3091  
Durban Branch: Tel: 086 123 6872  
Fax: 086 529 4683  
Steve: 083 613 0664

**CELEBRATING 50 YEARS OF EXCELLENCE**

## EXPERTS IN UNDERCARRIAGE & WEAR PARTS



**EXPERIENCE THE WORLD CLASS  
CENTRAX UNDERCARRIAGE  
CONVERSION & REPAIR PROCESS**

**YOUR ONE STOP  
UNDERCARRIAGE &  
WEAR PARTS SHOP**

### CENTRAX MANAGEMENT TEAM



**FRANZ ARAZYM**  
FOUNDER



**BRENDAN ARAZYM**  
CEO



**RENIER OLIVER**  
SALES DIRECTOR



**BRIAN VAN BUUREN**  
COMMERCIAL DIRECTOR



**TREVOR HARRIS WEBSTER**  
SALES MANAGER



**ANDRIES MASILELA**  
TRACK WORKSHOP MANAGER



**STEVE ARAZYM**  
PINETOWN BRANCH  
MANAGER



Manufacturers names, numbers and descriptions are used for reference purposes only & is not implied that any parts listed is the product of these manufacturers.



ON THE RIGHT TRACK WITH

# CENTRAX

Since 1974

[www.centraxsa.co.za](http://www.centraxsa.co.za)

Head Office: Tel: (011) 392 5055  
(011) 392 5056  
Fax: (011) 392 3091  
Durban Branch: Tel: 086 123 6872  
Fax: 086 529 4683  
Steve: 083 613 0664

**CELEBRATING 50 YEARS OF EXCELLENCE**



**The market leader in the supply of quality wear parts and undercarriage to the mining and construction industry for 50 years.**

**It all started with Peter Franz Josef Arazym back in 1974.**

Franz was born in 1945 and grew up in Salzburg Austria, birthplace of the famous composer Wolfgang Amadeus Mozart. He came to South Africa at a young age and took up employment in the banking sector for a short time. He then started a career in the footwear industry with Bata Shoes and indelibly stamped his name on the industry as one of the most successful salesmen in his 7 year highly decorated career. It was then that Franz developed an interest in Ground Engaging Tools which brought on the birth of Centrax, started by him and his wife Maureen.

50 years later Centrax stands resolute and proud in a highly competitive industry, with 48 employees, two workshops and 3500 square meters of covered warehouse optimally stocked to keep your earthmoving machinery on track at all times.

30 years ago Franz's son Brendan, our current CEO, joined Centrax on the sales front and took to the task with relish and in no time developed a strong knowledge of product and industry. Today he still deals with many of the customers he started out with and is at the forefront of the highly driven Centrax sales team.

21 years ago Renier Olivier, Sales Director, joined the team as a salesman and he too still operates within a long standing loyal customer base he has so adequately developed. He also has a tremendous understanding of industry and product and heads up the operational side of the business with our Sales Manager Trevor Harris Webster. Trevor joined in 2010 and sets a great trend for our blended sales force of both young and experienced sales staff through his motivation and highly successful sales results.

Our Commercial Director, Brian van Buuren, joined us in 2020 off the back of a ten year term with ITR Africa serving as Managing Director for the last four. Brian has applied wholesome change to our operation through his years of experience. His function is multi faceted, he is involved in finance, procurement, sales and marketing. An all round addition to an already highly productive and professional management team.

Steve Arazym heads up our Pinetown business unit and has developed great skills, with his right hand man Johan Boshoff, regarding the customer base and their requirement in a very competitive area, with branch presence of major competitors in close proximity.



ON THE RIGHT TRACK WITH

# CENTRAX

Since 1974

[www.centraxsa.co.za](http://www.centraxsa.co.za)

Head Office: Tel: (011) 392 5055  
(011) 392 5056  
Fax: (011) 392 3091  
Durban Branch: Tel: 086 123 6872  
Fax: 086 529 4683  
Steve: 083 613 0664

**CELEBRATING 50 YEARS OF EXCELLENCE**



The engine room of Centrax, namely our administration Department, with Pamela Clark at the helm have over 52 years of employment with the company, they offer tremendous support to the sales team and other departments through their highly efficient and productive input.

Our track workshop and idler rebuild facility are headed up by Andries Masilela and Dries Horn respectively, and they need no introduction, they are the best at their trades in the industry, and have been for many years, hence the quality offerings only Centrax can present to the market. Our logistics and inventory systems are run by a highly competent and experienced team that have been with Centrax for many years, and have honed their skills and product knowledge over their tenure with the company to offer the best service levels in the market.

When one speaks of a business family, Centrax is the epitome of just that. The minimal staff turn over and lengthy employment periods of most of the staff are what make this family so special and the culture so wonderful that we experience daily in our business. Centrax Management and shareholders would like to take this opportunity to thank each and every one of our partners that have both supplied us and supported us on the sales front over the years for travelling on this wonderful journey with us, we are indeed privileged.





**SHANTUI**  
VALUE THAT WORKS



## SG21-C6

### Motor grader

• Warranty  
2 Years/ 4 000Hrs

- Engine Model
- Gross Power
- Operating Weight

Weichai WP7G220E300  
162kW@2200rpm  
18,350kg

NOW

# R 2 100 000.00\*\*

EXCL VAT

T'S & C'S APPLY, SPECIAL RUNS UNTIL END OF **JANUARY 2024**

**JET PARK BRANCH**  
UNIT 1, JURGENS STR, ISANDO, Ext5, Kempton Park

Connect with us







## SR12-5 Road roller

• Warranty  
2 Years/ 4 000Hrs

- . Engine Model
- . Gross Power
- . Operating Weight

Weichai WP6G140E22  
105kW@2200rpm  
12,000kg

**R 1 050 000.00\*\***  
NOW  
EXCL VAT T'S & C'S APPLY, SPECIAL RUNS UNTIL END OF **JANUARY 2024**



011 390 8160

[www.handaxmachinery.com](http://www.handaxmachinery.com)

**HANDAX**





## Great North Power Solutions

**SOLAR ENERGY SYSTEMS  
GENERATORS & PARTS  
FIELD SERVICES  
ENGINE PARTS  
FILTRATION PARTS**



015 590 1886 | [REP@GNPS.CO.ZA](mailto:REP@GNPS.CO.ZA) | [WWW.GNPS.CO.ZA](http://WWW.GNPS.CO.ZA)  
35B CORUNDUM STREET, FUTURA, POLOKWANE

# CATERLIM

**QUALITY  
EARTHMOVING  
EQUIPMENT PARTS**

015 004 0165 | [REP@CATERLIM.CO.ZA](mailto:REP@CATERLIM.CO.ZA) | [WWW.CATERLIM.CO.ZA](http://WWW.CATERLIM.CO.ZA)  
35A CORUNDUM STREET, FUTURA, POLOKWANE

## LIMCAT

EARTHMOVING EQUIPMENT WORKSHOP

THE WORKSHOP OFFERS REPAIR SERVICES FOR A WIDE RANGE OF COMPONENTS, INCLUDING ENGINES, TRANSMISSIONS, AND PUMPS. OTHER SERVICES INCLUDE GENERAL ENGINEERING, FABRICATION OF NEW DISCONTINUED PARTS, REPAIRS OF H-FRAME AND AXLE LINE BORING AND ASSEMBLY.

015 004 0591 | [limcate@caterlim.co.za](mailto:limcate@caterlim.co.za)  
Ptn 3 Farm Mooifontein Onverwacht Polokwane



# The Road to Recovery

## THE VOLVO SEAT CYCLE



The **Seat Connection** specialises in the complete mechanical repair and rebuild of original Volvo operator seats.

Standing the test of time, our expertly refurbished truck seats offer reliability, affordability, keeping your driver safely on the road.

30 years of service and product knowledge makes us the seating company you can trust.

*Quality service, the secret to our success*

011 452 6802  
[info@seatconnection.co.za](mailto:info@seatconnection.co.za)  
[www.seatconnection.co.za](http://www.seatconnection.co.za)  
102 8th Ave, Edenvale, Gauteng





M A S J I E N E

Corner of Great North & Stanley Road, Brentwood Park AH, Johannesburg  
Dewald Hattingh: +27(0) 72 547 2198 | +27(0) 11 973 3737



**CAT 330C**  
R750 000 + VAT



**CAT 980G**  
R1 500 000,00 + VAT



**CAT 16H**  
R2 500 000 + VAT



**CAT 120G**  
R650 000,00 + VAT



**CAT D7R**  
R1 700 000 + VAT



**JCB 3CX 4X4**  
R300 000,00 + VAT



**CAT 320D**  
R950 000,00 + VAT



**PNEUMATIC ROLLER**  
R550 000,00 + VAT



**CAT 950H**  
R950 000,00 + VAT



**GEHL 4640**  
R170 000,00 + VAT



**BELL BW141AD**  
R600 000,00 + VAT



**CAT 920**  
R220 000,00 + VAT



**BOMAG BW 177-4**  
R550 000,00 + VAT



**BELL 2606E**  
R950 000,00 + VAT



**CAT D7G**  
R700 000,00 + VAT



**SITE DUMPER**  
R65 000,00 + VAT



**CAT 224E**  
R250 000,00 + VAT

[ATLASMASJIENE.CO.ZA](http://ATLASMASJIENE.CO.ZA) | [INFO@ATLASMASJIENE.CO.ZA](mailto:INFO@ATLASMASJIENE.CO.ZA)



[www.espa.co.za](http://www.espa.co.za)

# ESP THE PROVEN ALTERNATIVE



Multi-brand parts suitable  
for **CATERPILLAR**  
earthmoving machinery



**BENEFIT FROM OUR 9 MONTHS WARRANTY PERIOD ON NEW PARTS**

ESP Johannesburg  
Tel: (011) 398-1700

ESP Pretoria  
Tel: (012) 804-6706

ESP Middelburg  
Tel: (013) 246-2520

ESP Pinetown  
Tel: (031) 705-4200

ESP Cape Town  
Tel: (021) 945-1030

ESP Gqeberha  
Tel: (041) 484-4575

ESP Bloemfontein  
Tel: (051) 432-4501

ESP Kimberley  
Tel: (053) 831-8349

ISO 9001 Certified

Manufacturers' names, numbers, symbols and descriptions are used for reference purposes only and it is not implied that any part listed is the product of the manufacturers.



[www.espa.co.za](http://www.espa.co.za)

# ESP THE PROVEN ALTERNATIVE



Multi-brand parts suitable for  
**KOMATSU**  
earthmoving machinery



**BENEFIT FROM OUR 9 MONTHS WARRANTY PERIOD ON NEW PARTS**

ESP Johannesburg  
Tel: (011) 398-1700

ESP Pretoria  
Tel: (012) 804-6706

ESP Middelburg  
Tel: (013) 246-2520

ESP Pinetown  
Tel: (031) 705-4200

ESP Cape Town  
Tel: (021) 945-1030

ESP Gqeberha  
Tel: (041) 484-4575

ESP Bloemfontein  
Tel: (051) 432-4501

ESP Kimberley  
Tel: (053) 831-8349

ISO 9001 **Certified**

Manufacturers' names, numbers, symbols and descriptions are used for reference purposes only and it is not implied that any part listed is the product of the manufacturers.



[www.espa.co.za](http://www.espa.co.za)

# ESP THE PROVEN ALTERNATIVE



MULTI-BRAND parts suitable for  
**CATERPILLAR®**  
EARTHMOVING machinery



**BENEFIT FROM OUR 9 MONTHS WARRANTY PERIOD ON NEW PARTS**

ESP Johannesburg  
Tel: (011) 398-1700

ESP Pretoria  
Tel: (012) 804-6706

ESP Middelburg  
Tel: (013) 246-2520

ESP Pinetown  
Tel: (031) 705-4200

ESP Cape Town  
Tel: (021) 945-1030

ESP Gqeberha  
Tel: (041) 484-4575

ESP Bloemfontein  
Tel: (051) 432-4501

ESP Kimberley  
Tel: (053) 831-8349

ISO 9001 **Certified**

Manufacturers' names, numbers, symbols and descriptions are used for reference purposes only and it is not implied that any part listed is the product of the manufacturers.



[www.espa.co.za](http://www.espa.co.za)

# ESP THE PROVEN ALTERNATIVE



ESP Gqeberha  
Tel: (041) 484-4575

**BENEFIT FROM OUR 9 MONTHS WARRANTY PERIOD ON NEW PARTS**

ESP Johannesburg  
Tel: (011) 398-1700

ESP Pretoria  
Tel: (012) 804-6706

ESP Middelburg  
Tel: (013) 246-2520

ESP Pinetown  
Tel: (031) 705-4200

ESP Cape Town  
Tel: (021) 945-1030

ESP Gqeberha  
Tel: (041) 484-4575

ESP Bloemfontein  
Tel: (051) 432-4501

ESP Kimberley  
Tel: (053) 831-8349

ISO 9001 **Certified**

Manufacturers' names, numbers, symbols and descriptions are used for reference purposes only and it is not implied that any part listed is the product of the manufacturers.



# McKenzie

## PLANT SALES

Contact for more details: Tel: 033 212 2181  
Cell: 082 558 7901 | Email: [sjm@mckenzieplant.co.za](mailto:sjm@mckenzieplant.co.za)



You can now find us  
on Facebook, go to  
[www.facebook.com/mckenzieplantire](http://www.facebook.com/mckenzieplantire)



**Komatsu D65E-12**



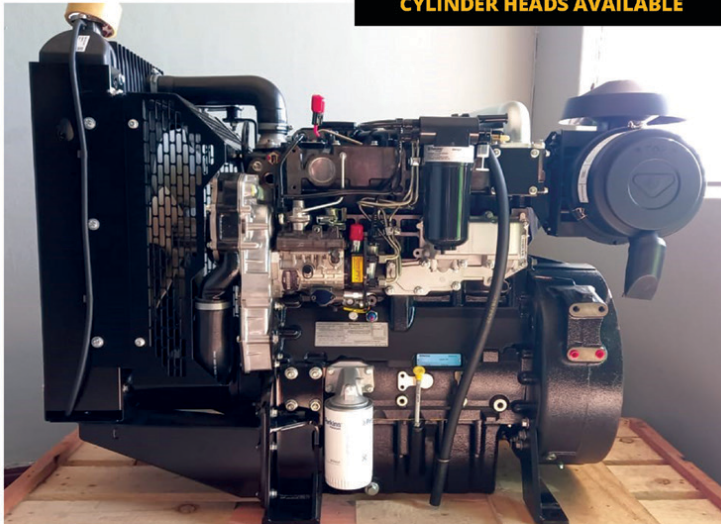
**Komatsu WA380-6**



**EARTHMOVING  
INVESTMENTS**

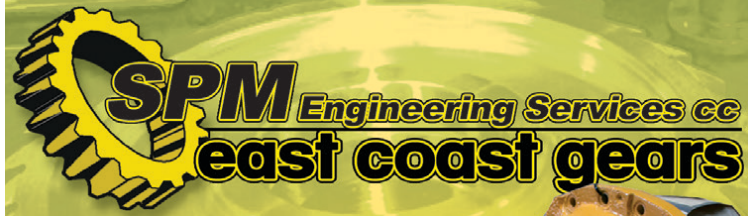


**NEW C11, C13, C15 AND C18  
CYLINDER HEADS AVAILABLE**



**NEW PERKIN 1104C TO BE CONVERTED TO TLB SPEC**

**FOR MORE INFO 084 253 9831 | [RCinvestments01@gmail.com](mailto:RCinvestments01@gmail.com)**



**Specialising in earthmoving  
power transmission rebuilds of:**

- Front end loaders
- Final drives
- Drop boxes (transfer case)
- Differentials etc.

**MANUFACTURE OF ALL  
GEARS AND REPAIRS**



**REPAIR CARRIER  
HOUSINGS/ HUBS**

Tel: 031 701 3500 | Cell: 083 383 4943 | Fax/Email: 086 224 3982  
Email: [eastcoastgears@gmail.com](mailto:eastcoastgears@gmail.com) | 24 Henwood Road, Pinetown, KZN

# CHANGLIN

We Import & supply parts for CHANGLIN Construction Equipment



**WE ALSO IMPORT AND SUPPLY PARTS FOR OTHER CHINESE EQUIPMENT**



**PARTS** Brake pads, Brake boosters, Cylinder seal kits, Transmission control cables, Brake calliper seals, Rear diff oscillation bushes, Fuel tank filler caps and MUCH MORE

Chris. 081 728 6914 | Cindy 017 843 2072 | Michelle 017 843 2072 | Chris Jnr 083 675 8128



Celebrating **33** Years

# TRAXGLOBAL

Supplying Quality Products Since 1991

MARINE - MINING - POWER GENERATION

TraxGlobal (Pty) Ltd. Company Reg No : 2022/544621/07

## WORLDWIDE PARTS & EQUIPMENT SOURCING SPECIALISTS

2024



GENUINE PARTS  
**KOMATSU**



**TEREX**



**VOLVO PENTA**



# HOWO SINOTRUK

CHASSIS CABS

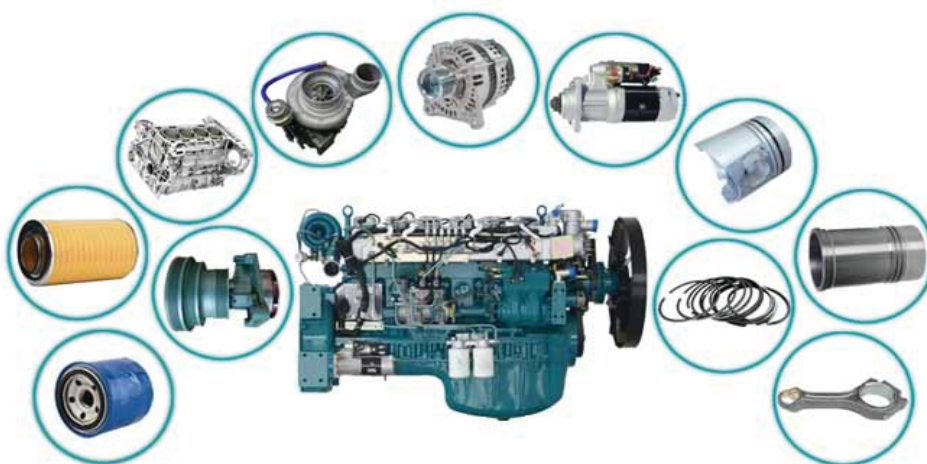
DUMP TRUCKS

WATER TANKERS

FUEL TANKERS

FIRE TRUCKS

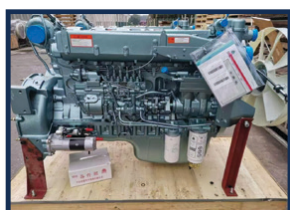
CRANE LOW BED



We are able to offer a FULL range of Left and Right hand drive Howo vehicles as well as able to offer a FULL range of spares for all models.

Fully customised builds are also available on request.

Contact us for more info.



Contact Details : Sales : +27 (0)28 273 8283 / [info@traxglobal.co.za](mailto:info@traxglobal.co.za)  
Eddie : +27 (0)82 697 0534 / [parts@traxglobal.co.za](mailto:parts@traxglobal.co.za)  
Steve : +27 (0)82 954 6253 / [steve@traxglobal.co.za](mailto:steve@traxglobal.co.za)  
Bev : +27 (0)83 505 8955 / [bev@traxglobal.co.za](mailto:bev@traxglobal.co.za)

Branches in :  
Johannesburg & Cape Town

[www.traxglobal.co.za](http://www.traxglobal.co.za)





**S. MICHELL,**

# **THE PLANT FINDER CC**

**The RIGHT EQUIPMENT at the RIGHT PRICE**

## **USED PLANT AVAILABLE**



### **1X 2015 DOOSAN DX140LC TRACKED EXCAVATOR**

Serial no: 006852 | Year: 2015  
SMR: 9945 hours

Fully enclosed air-conditioned cab  
Guarantee on all oil emersed components.

**Price options:**

**Option 1, Machine Only.** R 950 000.00 + VAT.

**Option 2, Machine & hydraulic quick hitch.**  
R 990 250.00 + VAT.

**Option 3, Machine, quick hitch &  
hydraulic breaker/hammer.**  
R 1 135 250.00 + VAT.



### **1x 2012 Volvo EC290BLC Prime Tracked Excavator**

S/no: 18916  
Engine no: 11229357  
SMR: 12150 hours.

Fully enclosed air-conditioned cab.  
Guarantee on all oil emersed components.  
Price: R 795 000.00 + VAT



### **1x 2012 Caterpillar 320DL Tracked Excavator**

Serial no: MGG01195  
SMR: 7650 hours.  
Fully enclosed air-conditioned cab.  
Price: R 1 200 000.00 + VAT



### **1x 2005 Bell B20D (6x4) ADT**

VIN no: AEB1348105R002160  
Engine no: 906.949.00.422911  
SMR: 27500 hours.  
Price: R 675 000.00 + VAT



### **1x 2002 Bobcat 773 G-Series Skidsteer Loader**

Serial no: 519018280  
Engine: Kubota V2003-TE  
Price: R 185 000.00 + VAT

# **MAXEQUIP**

**CONSTRUCTION EQUIPMENT**

**INTRODUCING  
MAXEQUIP CONSTRUCTION EQUIPMENT**

# **HIDROMEK**

**Carefully Created For Your Success**

**For HiDROMEK Equipment Sales & After Sales**  
Free State, Eastern Cape, Western Cape



**Powerful, Durable and Comfortable!**

HIDROMEK backhoe loaders provide superior performance even in the toughest working conditions through its durability, versatility and comfort.

**SHAWN MICHELL - 082 568 4033**  
Tel: 041-379 1717 / Fax: 041-379 4753  
[shawn@plantfinder.co.za](mailto:shawn@plantfinder.co.za)

**f** Follow & Like us on Facebook  
[facebook.com/ThePlantFinder](https://facebook.com/ThePlantFinder)  
**WWW.PLANTFINDER.CO.ZA**





**USED+  
REBUILT**

# MACHINERY +COMPONENTS

## OFFERINGS

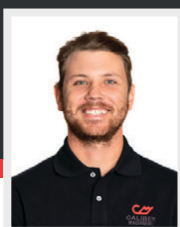
- ➔ Used Machines
- ➔ Refurbished Machines
- ➔ Rebuilt Machines
- ➔ Parts & Components
- ➔ Large Inventory of Equipment to Rent

## MACHINES

- ➔ Dozers
- ➔ Graders
- ➔ Articulated Dump Trucks
- ➔ Rigid Trucks
- ➔ Loaders
- ➔ Water and Diesel Bowsers

## COMPONENTS

- ➔ Engines
- ➔ Final Drives
- ➔ Differentials
- ➔ Transmissions
- ➔ Dropboxes
- ➔ Track Frames



**JC VAN DAM**  
+27 76 100 9386  
[jc@calibermachinery.co.za](mailto:jc@calibermachinery.co.za)



**STIVEN SETHABELA**  
+27 60 889 5451  
[stiven@calibermachinery.co.za](mailto:stiven@calibermachinery.co.za)



**ARNO OLIVIER**  
+27 72 479 9294  
[arno@calibermachinery.co.za](mailto:arno@calibermachinery.co.za)



**KOSIE MALAN**  
+27 82 326 4578  
[kosie@calibermachinery.co.za](mailto:kosie@calibermachinery.co.za)

## CONTACT US

FOLLOW US



**T** +27 12 940 0688  
**E** [info@calibermachinery.co.za](mailto:info@calibermachinery.co.za)

**[www.calibermachinery.co.za](http://www.calibermachinery.co.za)**

1618 Sterkfontein Ave, Doornkloof, Centurion, Gauteng, South Africa, 0181







[www.blumaq.com](http://www.blumaq.com)

Follow us on:



**We have  
the part  
you need**



Following our success as **Berco** product distributor in Zambia, Blumaq South Africa has now also been appointed a distributor for this quality product in South Africa.

Blumaq South Africa now also offers **Berco quality undercarriage parts and repairs** from our operation based in Wadeville, Johannesburg.

Our fully serviced Track Undercarriage workshops offers a full service including Turning of Pins & Bushes / Re-stripping of Grouser shoes / Track Link repairs / Idler and Roller rebuilds / Track Frame Rebuilds.

Contact us today for a free on site wear assessment of your undercarriage components.

**Contact:**

+27 11 966 5092 **Johannesburg**

+26 096 0923 962 **Kitwe**

+264 81 291 7539 **Windhoek**

[john.beukes@blumaq.com](mailto:john.beukes@blumaq.com)

**Berco dealer in  
Spain, Zambia,  
Namibia, Turkey,  
South Africa and  
Indonesia:**



**Branches in Spain:** Alicante | Almería | Asturias | Barcelona | Galicia | Madrid | Mérida | Ponferrada | Sevilla | Tenerife | Zaragoza

**Branches in the world:** Chile | United States | France | Portugal | Turkey | China | Russia | Italy | Romania | South Africa | Zambia  
Namibia | Peru | Kazakhstan





[www.blumaq.com](http://www.blumaq.com)

Follow us on:



## Spare parts suitable for VOLVO

We offer a wide range of items with immediate delivery for your **VOLVO** earthmoving equipment.



## Alternative spare parts for Caterpillar

We offer a wide range of items with immediate delivery for your **CATERPILLAR** earthmoving equipment.

### Contact:

+27 11 966 5092 **Johannesburg**  
+26 096 0923 962 **Kitwe**  
+264 81 291 7539 **Windhoek**  
[john.beukes@blumaq.com](mailto:john.beukes@blumaq.com)

Berco dealer in  
Spain, Zambia,  
Namibia, Turkey,  
South Africa and  
Indonesia:



**Branches in Spain:** Alicante | Almería | Asturias | Barcelona | Galicia | Madrid | Mérida | Ponferrada | Sevilla | Tenerife | Zaragoza  
**Branches in the world:** Chile | United States | France | Portugal | Turkey | China | Russia | Italy | Romania | South Africa | Zambia | Peru | Kazakhstan



# 2018 BELL B40E ADT'S

## 2X AVAILABLE

SOUTH AFRICA'S LEADING SUPPLIER OF **USED EARTHMOVING PLANT AND EQUIPMENT**



**CONTACT US FOR MORE INFO: 021 386 4190**



**C.T.C. PLANT COMPANY**  
SINCE 1992

Scan the code and get in  
contact with our  
experienced sales team







**THE EXPERTS  
IN EARTHMOVING  
MACHINERY COMPONENTS**

**POWERING  
PERFORMANCE  
ONE PART  
AT A TIME.**

We carry an extensive range of  
**New, Used &  
Reconditioned  
Engine Components**

**Visit our website for available stock**



## **WE STOCK THE FOLLOWING COMPONENTS**

- CYLINDER HEADS
  - CRANKSHAFTS
  - ENGINE BLOCKS
  - GEARBOXES
- and more...

**Over 250 Machines  
in Stock !!**

New stock added every month.

## **WE STOCK USED & REFURBISHED PARTS FOR THE FOLLOWING BRANDS**

**BELL**

**CASE**

**CAT**

**DOOSAN**

**HITACHI**

**UCB**

**JOHN DEERE**

**KATO**

**Kawasaki**

**KOBELCO**

**KOMATSU**

**LIEBHERR**

**mitsubishi**

**SUMITOMO**

**TEREX**

**VOLVO**

Office: +27 82 691 9524 • Adriaan: +27 71 234 6234 • Email: [admin@duraparts.co.za](mailto:admin@duraparts.co.za)  
223 Denne Rd. Witpoort, Brakpan 1540

**[www.duraparts.co.za](http://www.duraparts.co.za)**



**THOMAS MITTAG**  
Cell: +27 72 545 6223  
Mail: [info@mae-equipment.com](mailto:info@mae-equipment.com)

**MAE Equipment**  
Witbank/Riverside  
(Yard)

[www.mae-equipment.com](http://www.mae-equipment.com)

# MAE

## EQUIPMENT

### EPIROC D65 FLEXIROC DRILL RIG



2017/2018 models  
3 units available  
Call for Details

### SANDVIK PANTERA DP1500I



2019 model  
3 units available  
Call for Details

### EPIROC DM30MK1 DRILL RIG



2014 model  
Call for Details

### EPIROC DM30MK2 DRILL RIG



2015 model  
Call for Details

### CAT 777D DUMP-TRUCK



2011 model  
low hours  
Call for Details

### CAT 777F DUMP-TRUCK



2010 model  
good runner  
Call for Details

### CAT 777D DUMP-TRUCK



2012 model  
2 units available  
Call for Details

### HITACHI EX1200 EXCAVATOR



2016 model  
2 units available  
Call for Price

### VÖGELE PAVER SUPER 1603-3



2015 model  
Call for Details

**WE PAY  
CASH WITHIN  
24 HOURS**

WE BUY ALL KINDS OF EARTHMOVING,  
CONSTRUCTION OR MINING MACHINERY  
PLEASE CONTACT OR SEND OFFERS  
TO [info@mae-equipment.com](mailto:info@mae-equipment.com)

**WE OFFER EASY FINANCE  
FOR OUR MACHINES**

PLEASE CONTACT ME ON +27 72 545 6223 OR SEND MAIL  
TO [info@mae-equipment.com](mailto:info@mae-equipment.com)

„Your Partner for new & used Machinery and Equipment.“



**THOMAS MITTAG**  
Cell: +27 72 545 6223  
Mail: [info@mae-equipment.com](mailto:info@mae-equipment.com)

**MAE Equipment**  
Witbank/Riverside  
(Yard)

# MAE

## EQUIPMENT

[www.mae-equipment.com](http://www.mae-equipment.com)

### METSO LT120 JAW-CRUSHER



**2020 model**

**Call for Details**

### METSO LT300 CONE-CRUSHER



**2020 model**

**Call for Details**

### METSO LT120 JAW-CRUSHER



**2022 model**

**Call for Details**

### WIRTGEN RECYCLER WR250



**2015 model**  
low hours

**Call for Details**

### WIRTGEN MILLING MACHINE W130F



**2015 model**  
5,000h

**Call for Details**

### WIRTGEN W100F



**2010 model**

**Call for Details**

### WIRTGEN W150F



**2015 model**  
2 units available  
**Call for Price**

### WIRTGEN W210F



**2013 / 2016 models**  
2 units available  
**Call for Price**

### WIRTGEN W100F



**2010 / 2013 / 2014 models**  
3 units available / refurbished - low hours  
**Call for Price**

**WE PAY  
CASH WITHIN  
24 HOURS**

**WE BUY ALL KINDS OF EARTHMOVING,  
CONSTRUCTION OR MINING MACHINERY**

PLEASE CONTACT OR SEND OFFERS  
TO [info@mae-equipment.com](mailto:info@mae-equipment.com)

**WE OFFER EASY FINANCE  
FOR OUR MACHINES**

PLEASE CONTACT ME ON +27 72 545 6223 OR SEND MAIL  
TO [info@mae-equipment.com](mailto:info@mae-equipment.com)

**„Your Partner for new & used Machinery and Equipment.“**





Hurricane Diesel specialises  
in the supply of Affordable,  
High Quality diesel injector test benches  
and related tools and accessories



## ***DIESEL EQUIPMENT, PARTS & ACCESSORIES***

Tel: 015 297 2444 / 010 597 7843  
Email: [info@hurricanediesel.co.za](mailto:info@hurricanediesel.co.za)



[www.hurricanediesel.co.za](http://www.hurricanediesel.co.za)



# EarthComp <sup>®</sup>

**WE BUY EARTHMOVING<sup>®</sup>**  
Earthmoving Buying and Selling



CONSTRUCTION & MINING

TANKER EQUIPMENT

CIVIL EQUIPMENT

TRUCK & TRAILERS



6 x Globetrotter Trucks Available  
2020 VOLVO FH440 GLOBETROTTER TRUCKS



3 x Trucks Available  
2020 VOLVO FH440 TRUCKS



30 x Side Tippers Trailers Available  
27 x AFRIT TRAILERS  
3 X TRAILMAXTRAILERS



7 x Dozers Available  
2018 CAT D8R DOZER



2 x TLB'S Available  
2014 CAT 428F 4x4 TLB



7 x Dozers Available  
2013 CAT D6R DOZER



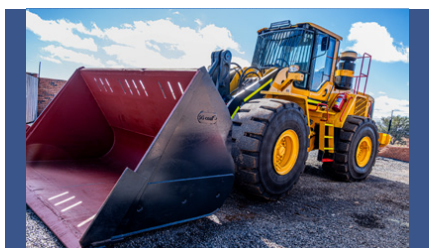
11 x Excavators Available  
2018 VOLVO EC750DL EXCAVATOR



11 x Excavators Available  
2014 CAT 349D EXCAVATOR



11 x Excavators Available  
2019 HITACHI ZX470 LCR-5G EXCAVATOR



6 x Loader Available  
2009 VOLVO L150F LOADER



5 x Graders Available  
2013 BELL 770G GRADER



2 x ADT'S Available  
2003 BELL B40D ADT

**Kobus - 076 780 2463**  
**Tertius - 083 628 7773**  
**marketing@earthcomp.co.za**

**www.earthcomp.co.za**  
**19 November Street**  
**Middelburg, Mpumalanga 1050**



# POWER TRANSMISSION TECHNOLOGY

## DRIVELINE COMPONENTS AND SPARE PARTS FOR BELL



SCAN QR CODE  
TO VISIT  
OUR WEB  
CATALOGUE



KEEPING YOUR PLANT IN MOTION

[info@pttech.co.za](mailto:info@pttech.co.za)

[www.pttech.co.za](http://www.pttech.co.za)

tel: +27 11 022 8570

\*All photos, descriptions, part numbers, symbols and manufacture names are for reference purposes only.



**LOVOL**  
**WEICHAI**



**24/7**  
**SUPPORT**

**ROBUST RELIABLE SUPPORTED**



**LOVOL FL936H**  
3 Ton, 2,0 m<sup>3</sup> Bucket



**LOVOL FL956H**  
5 Ton, 3,0 m<sup>3</sup> Bucket



**LOVOL FL958K**  
5,5 Ton, 3,3 m<sup>3</sup> Bucket



**LOVOL FL968H**  
6 Ton, 4,0 m<sup>3</sup> Bucket



**LOVOL FL978H**  
7 Ton, 4,6 m<sup>3</sup> Bucket



**LOVOL FR215E-2**  
21,5 Ton, 1,0 m<sup>3</sup> Bucket



**LOVOL FR330D**  
33 Ton, 1,6 m<sup>3</sup> Bucket



**LOVOL FR510E2-HD**  
51 Ton, 2,8 m<sup>3</sup> Bucket



**LOVOL FR700F**  
69 Ton, 4,4 m<sup>3</sup> Bucket

**VISIT OUR WEBSITE ON [WWW.DURASALES.CO.ZA](http://WWW.DURASALES.CO.ZA)**

**JHB SHOWROOM**

46 View Point Rd,  
Bartlett AH, Boksburg,  
1462  
CONTACT NO : +27 (0) 11 918 4760

**JHB SALES TEAM:**

Curtis - +27 82 359 9199  
Jerry - +27 82 895 5611  
Johan - +27 66 279 7801  
Danny - +27 60 973 0799

**CPT SALES TEAM:**

Gerrie - +27 82 950 7040  
Cornel - +27 83 284 3088  
Neil - +27 82 093 3396

**CPT SHOWROOM**

30 Kiaat street, Kraaifontein  
Industrial, Kraaifontein,  
Cape Town  
CONTACT NO : +27 (0) 21 988 6618





## ENGINE SPARES



**LINER KITS, GASKET KITS,  
VALVES & GUIDES, WATER PUMPS,  
OIL PUMPS, CRANK & CAM SHAFTS,  
ENGINE BEARINGS AND BUSHINGS**



**MITSUBISHI**

**KOMATSU**

**DOOSAN**

**NISSAN**

**ISUZU**

**YANMAR**



**KAWASAKI PUMPS**  
**NEW AND RECON**

## FINAL DRIVES

**20 & 30 TON EXCAVATOR  
TM40 & TM60 FINAL DRIVE PARTS  
& COMPLETE UNITS**



## KAWASAKI ROTATING GROUPS

**K3V AND K5V SERIES  
INNER PARTS  
ROTATING GROUPS AND SEAL KITS**

## UNDERCARRIAGE



**TRACK LINKS**



**TRACK PLATES  
BOLTS & NUTS**



**SPROCKETS**



**IDLERS**



**TRACK & CARRIER  
ROLLERS**

### **CONTACT US:**

**TEL: 011 396 1081**

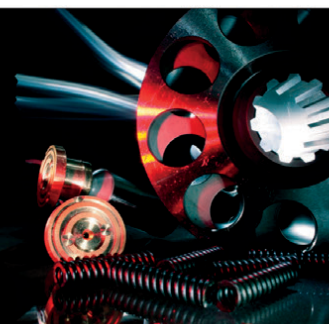
**SALES2@SHINLITRADING.CO.ZA**

**SALES4@SHINLITRADING.CO.ZA**

**SALES5@SHINLITRADING.CO.ZA**

### **ADDRESS:**

**67 HIGH ROAD, BREDELL A/H, KEMPTON PARK**





# EQUIPMENT PARTS & ENGINES

EST '96

REPLACEMENT PARTS *for* EARTHMOVING EQUIPMENT

Happy New Year 2024

[equipmentparts.co.za](http://equipmentparts.co.za)

**ADT**  
B18 TO B50  
B/C/D & E-SERIES

**3WL**  
LOGGER & FORKLIFT

**TLB 315 Series**  
SE / SG / SJ / SK / SL  
JCB  
3CX/DX & 4CX/DX

011 571 9000 / 082 655 9276

[@equipmentpartssa](https://www.facebook.com/equipmentpartssa)
[@equipment\\_parts\\_engines](https://www.instagram.com/equipment_parts_engines)
[@equipmentparts](https://www.twitter.com/equipmentparts)
[@equipmentparts](https://www.linkedin.com/company/equipmentparts)
[@equipmentparts](https://www.youtube.com/channel/UC...)
[@equipmentparts](https://www.youtube.com/channel/UC...)

## LANDBOUPART

www.landboupart.com

COMBINE • ENGINE • TRACTOR • GROUND ENGAGING • PARTS

The **LEADING DISTRIBUTOR** of **REPLACEMENT SPARE PARTS** for the agricultural and industrial markets.

### AXLE PARTS

**CARRARO**  
Your specialist  
for genuine Carraro  
axle parts

**SPICER**

**AFTERMARKET**

**ISANDO** - 12 Wrench Rd, Isando. Telephone: 011 966 9200

[info@landboupart.com](mailto:info@landboupart.com) [www.landboupart.co.za](http://www.landboupart.co.za)

### JD HOFFMAN EARTHMOVING

FOR ALL YOUR ALLISON TRANSMISSION PARTS

THRUST BEARING KIT

ALL H04000/8000 LIFTS

4TH GEN MD/HQ

**JD Hoffman**  
earthmoving cc

Email: [diwie@mwweb.co.za](mailto:diwie@mwweb.co.za)  
Tel: 082 896 7950





# GFA

Gears for Africa

145 Lamp Road, Wadeville Germiston

**OUR QUALITY COMPARES 100%  
TO ANY OEM SPARE  
MANUFACTURES**

**MANUFACTURE OF SPIRAL BEVEL GEARS NOW AVAILABLE**



**Gears for Africa - Petrel International** products include all types of gears, sprockets, splines and related product for industrial and heavy duty equipment and practically all applications related to power drive systems:

**Bevel Gears • Spur Gears • Worm Gears • Helical & Internal Helical Gears  
Crown Gears • Internal & External Splines.**



**PETREL  
INTERNATIONAL**  
ESTD 1947

Carl - 066 020 6338 | [carl@petrelequipment.com](mailto:carl@petrelequipment.com)

Tel: 021 577 1032

Address: 97 Neil Hare Rd, Atlantis, Cape Town

Petrel International Official Distributors of : Braden/Paccar winch

**BRADEN. CARCO. Gearmatic.**

**PACCAR WINCH**

**CROWN WHEEL AND PINION, PLANETARY, SUN AND RING GEARS  
FINAL DRIVE GEARS, DIFF HOUSINGS SPIDER CROSS KITS, SPIRAL BEVEL GEARS**

**FOR THE MINING, RAIL, HEAVY EARTH MOVING, BUILDING,  
AND AGRICULTURAL INDUSTRIES**



**083 657 0522 | [carl@gearsforafrica.co.za](mailto:carl@gearsforafrica.co.za)  
[www.gearsforafrica.co.za](http://www.gearsforafrica.co.za)**

Tel: 011 824 2017  
Fax: 011 420 3314



# THE POWER OF PRODUCTIVITY



## ULTIMATE EXCHANGE COMPONENTS

Short lead times, Customer service, Cost savings, Quality workmanship Combined, enable us to be extremely qualified to handle your Repairs and Manufacturing needs.



**Certified SEM  
Dealer & Agent**



ALL NAMES USED FOR ILLUSTRATION PURPOSES ONLY



### HYDRAULIC CYLINDERS

Manufacturing & Repair of ALL Hydraulic cylinders are done to OEM specification. Various Service Exchange units available for Most Brands.

### MACHINE & COMPONENT REBUILDS

All Component repairs done in house using OEM parts  
Partial & Full "O" Hour Rebuilds on ALL Earthmoving equipment  
Final Drives, Wheel Stations, Drop Boxes, Engines, Transmissions

### FIELD SERVICE

Mobile Line-Boring, Boilermakers  
Strip & Assemble Assistance



### ENGINEERING SERVICES

Repairing & Manufacturing Buckets  
Repairs to Dozer Blades, Track Frames,  
Equalizer Bars, Repairs to Booms,  
Sticks, Bowls & Track Frames

### PARTS SUPPLY & PROCUREMENT

Supply of OEM & Aftermarket parts  
Purchasing Equipment & stripping for  
parts or Rebuild

### REBUILDS

Component Repairs & Supply  
Engine Rebuilds & Supply  
Midlife & Zero Hour Rebuilds



Clifford +27 78 854 7696 / [clifford@uecpty.co.za](mailto:clifford@uecpty.co.za) | Cois +27 64 591 2591 / [cois@uecpty.co.za](mailto:cois@uecpty.co.za)





# All Africa Supplies

GLOBAL REACH - LOCAL SUPPLY

[www.allafricasupplies.net](http://www.allafricasupplies.net)

011 918 9976

Enquiries: [sales@allafricasupplies.net](mailto:sales@allafricasupplies.net)

284/9 Elgin Road, Pomona AH, Kempton Park. 1619

**BELL**



**CARRARO**

**HITACHI**

**VOLVO**

Construction Equipment

**DOOSAN**



**CAT**



**HYUNDAI**  
HEAVY INDUSTRIES CO.,LTD.

**Mobil**

**ISUZU**

**KOMATSU**

\*All manufacturers names, numbers, symbols and pictures are for reference only. It does not imply that any of the parts are the product of these manufacturers.



**BL61B**  
STRIPPING FOR SPARES



**VOLVO EC480**  
STRIPPING FOR SPARES



**CAT 336D**  
STRIPPING FOR SPARES



**CAT 226B**  
BRAND NEW RADIATOR



FINAL DRIVES - CAT, DOOSAN,  
HYUNDAI, JCB, SUMITOMO, HITACHI



USED ENGINES AVAILABLE - CAT C9,  
C9.3, C13, C15, DOOSAN DE12, DE08  
VOLVO DE13, CUMMINS 6BT



SWING BEARINGS, SWING MOTORS  
& REDUCTIONS AVAILABLE



**ZF**  
AXLES



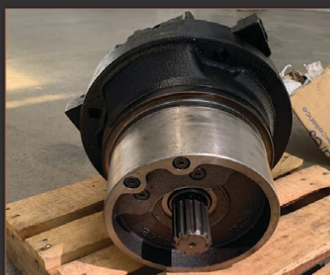
**CAT 966H**  
AXLES



**TM40**  
FINAL DRIVES



**BONFIGLIOLI 706C**  
FINAL DRIVES



**CAT 349D**  
TRAVEL MOTOR



SWING MOTORS: ZX200, ZX240, ZX270, ZX300,  
ZX330, ZX470, ZX520, Z 650, ZX670, ZX850, ZX870



**K5V200**



**LIEBHERR R974 PUMP - LPV250**  
20 AVAILABLE

[www.allafricasupplies.net](http://www.allafricasupplies.net)



# REDUCE DOWNTIME

HAVE ALL YOUR SERVICE PARTS PREPACKED  
WHEN USING JCB SERVICE KITS



**BELL**  
South Africa

Proudly selling  
& supporting



E-mail: [bellparts@bellequipment.com](mailto:bellparts@bellequipment.com)



[www.inmine.co.za](http://www.inmine.co.za)

## CAT D10T STRIPPING FOR PARTS



**RECONDITIONED  
ENGINE CORE  
PARTS**



**WIDE RANGE OF  
RECONDITIONED  
COMPONENTS**



**D9,D10,D11  
TRACK GROUPS AND  
ROLLERS AVAILABLE**

**OFFICE: +27 13 691 1052**



## GOOD RUNNER & USED ENGINES



Plot 26 Naauwpoort, Benicon Park,  
Witbank 1036 Mpumalanga, South Africa



## HITACHI 870-3 FOR SALE



## RECONDITIONED & USED TRACK FRAMES AVAILABLE

**Hennie Nelson**  
**+27 82 414 1393**  
**[hennie@inmine.co.za](mailto:hennie@inmine.co.za)**



## VARIOUS DUMP TRUCK BOWLS

**Francois De Klerk**  
**+27 66 281 9753**  
**[francois@inmine.co.za](mailto:francois@inmine.co.za)**



## GOOD USED COMPONENTS

**Darius Moolman**  
**+27 66 308 7886**  
**[darius@inmine.co.za](mailto:darius@inmine.co.za)**





**VEsales**

T/A Associated Equipment

Plot 92 Indaba Lane off Beyers Naude, Rietfontein, Roodepoort, South Africa

Duncan: +27 (0) 83 626 5588  
 Anton: +27 (0) 82 923 5397  
 Jaap: +27 (0) 82 892 1327  
 Loraine: +27 (0) 76 021 4344  
 Office: +27 (0) 11 801 4911

vendels@mweb.co.za  
 associatedloraine@xnet.co.za  
 ves@xnet.co.za

**WE ARE BUYERS FOR YOUR GOOD RUNNING REDUNDANT EQUIPMENT**



1x 2018 VOLVO EC750 D  
EXCAVATOR  
FULLY REFURBISHED (75 TON)



1x 2018 CAT M 320 DL  
WHEELED EXCAVATOR  
(ONLY 2800 HOURS)  
1x 2015 KOMATSU PC300 EXCAVATOR



2x NEW CAT 323D3  
EXCAVATORS  
1X NEW CAT 320D3 EXCAVATOR  
(PIPED FOR HAMMER)



1x2022 Volvo EC210 Exc (Only 1800Hrs)  
1x2021 CAT 323D3 Exc (Only 2200 Hrs)  
1x2021 CAT 320D3 Exc (Only 2500 Hrs)



1x 2006 HYUNDAI ROBEX 500LC-7A  
EXCAVATOR  
REFURBISHED



1x 2005 CAT 16H  
MOTOR GRADER - REFURBISHED  
(ENGINE REBUILT)



1x 2008/01/97 CAT 140H  
MOTOR GRADERS  
WITH RIPPERS



1x 1994/87 CAT 140G  
MOTOR GRADERS WITH RIPPERS  
1x 1984 CAT 14G MOTOR GRADER



1x1983 CAT 16G  
MOTOR GRADER  
REFURBISHED



**NEW!**  
3x NEW 2023 CASE 770FX/EX  
4X4 MAGNUM TLB'S  
2x NEW 2023 CASE 851FX  
4X4 MAGNUM TLB'S WITH 6IN1 BUCKETS



**NEW!**  
2x NEW 2022 MANITOU MBL745 HT S  
4X4 TLB



1x 2008 CAT 824H WHEEL DOZER  
REFURBISHED



1x 1996 CAT D10R  
CRAWLER DOZER - FULL REBUILT  
1x 2016 KOMATSU D375-6  
CRAWLER DOZER



1x 2011 CAT D8R  
CRAWLER DOZER  
FULL REBUILT



1x 2014 KOMATSU D65EX-16  
CRAWLER DOZER  
REFURBISHED



1x 2009 KOMATSU D375-8  
CRAWLER DOZER  
(EXCELLENT CONDITION)





# VEsales

T/A Associated Equipment

Plot 92 Indaba Lane off Beyers Naude, Rietfontein, Roodepoort, South Africa

Duncan: +27 (0) 83 626 5588  
Anton: +27 (0) 82 923 5397  
Jaap: +27 (0) 82 892 1327  
Loraine: +27 (0) 76 021 4344  
Office: +27 (0) 11 801 4911

[vendels@mweb.co.za](mailto:vendels@mweb.co.za)  
[associatedloraine@xnet.co.za](mailto:associatedloraine@xnet.co.za)  
[ves@xnet.co.za](mailto:ves@xnet.co.za)

**WE ARE BUYERS FOR YOUR GOOD RUNNING REDUNDANT EQUIPMENT**



1X 1987 CAT D7G  
CRAWLER DOZER



1X NEW 2022 SDLG L956F  
FRONT END LOADER  
1X 2000 CAT 938G  
FRONT END LOADER



2X2018 CAT 966L  
FRONT END LOADERS  
2X 2014 CAT 986H FRONT END  
LOADERS-REFURBISHED



1x 2007 DYNAPAC CC422HF  
DDV ROLLER - REFURBISHED  
1x 2000 HAMM DV6 DDV ROLLER



1x 2005 HAMM 3414  
SMOOTH DRUM ROLLER



1x 2010 HAMM 3411  
SMOOTH DRUM ROLLER



1x 2013 POWERSTAR 2642  
TWINSTEER 18000LT WATER TANKER  
1x MERCEDES AXOR 18000LT TANKER



1x 2007 CAT PF300C 7 WHEEL PTR  
1x 2003 HAMM GRW18 PTR



1X 2012 CAT 740 6X6  
ARTICULATED DUMP TRUCKS  
REFURBISHED



3x 2017 CAT 730C2 6X6  
ARTICULATED DUMP TRUCKS



3X 2018 DOOSAN DA40 6X6  
ARTICULATED DUMP TRUCKS



1x 2012 VOLVO A35F 6X6  
ARTICULATED DUMP TRUCK



1x 2019 JCB 540-140 Telehandler  
1x 2018 JCB 540-140 Telehandler  
1x 2017 JCB 540-140 Telehandler  
1x 2017 JCB 540-170 Telehandler



1X 2009 DIECI LH 679  
READY MIX CONCRETE TRUCK



1x 2009 DYNAPAC DF145P PAVER  
1x 2008 CAT AP600 ASPHALT PAVER  
1x 2003 VOGELE 1804 6-69 PAVER  
1x 1997 VOGELE 1800 6-68 PAVER



2x ETNYRE K CHIP SPREADERS  
4X2 FIXED HOPPER  
1X 2006 ETNYRE K CHIP SPREADER  
4X2 FIXED HOPPER



1X 1984 CAT 14G  
MOTOR GRADER



1X 2008 CAT 246C  
SKID STEER LOADER  
1X 2013 BOBCAT S130  
SKID STEER LOADER



1X 2014 WACKER NEUSON RD12A  
SIT ON ROLLER



20.5 X 25 L3 , 23.5 X25L3, 17.5X25  
ROCK GRIP L4 ,17.5X25 L3,  
1400X24L3,  
**ALL NEW TYRES**

GPS CO-ORDINATES: S26°3'56.343 - E37°52'37.453 • [www.vendequipmentsales.co.za](http://www.vendequipmentsales.co.za)





## AFRICA'S LEADING EARTHMOVING EQUIPMENT & PARTS DEALER

[www.blcplant.com](http://www.blcplant.com) ☎ +27 11 555 2000 ✉ [info@blcplant.com](mailto:info@blcplant.com)

PLANT

PARTS

RENTAL

OVER 600 MACHINES IN STOCK



**MOTOR GRADER**  
CAT 140H; 140K; 14H



**WHEEL LOADER**  
CAT 950H; 966H/L; 962H; 980H; 992G/K



**DOZER**  
CAT D6R/T; D7R; D8R; D9T; D10T; D11T



**EXCAVATOR** CAT 320D; 323D; 329D;  
336D; 345D; 349D; 374D/F; 390D/F

CAT 740'S



**MAHINDRA MAYHEM**

BRAND NEW MAHINDRA  
VX90 4X4  
TLB'S

with  
AIRCON



**LARGEST STOCK OF  
PARTS IN THE  
SOUTHERN HEMISPHERE**

Service exchange units available.

**6 MONTHS WARRANTY**  
on refurbished components.

View all our available  
stock on our website  
[www.blcplant.com](http://www.blcplant.com)





BLC Plant purchases earthmoving equipment for stock, rebuilds it as required in the fully equipped on-site workshops and then sells it to users in various industries. We focus on delivering products which meet customer specifications, offer buyers a viable alternative to new equipment and provide excellent after sales service and support.

**PLANT**

**View all our available stock on our website**  
**[www.blcplant.co.za](http://www.blcplant.co.za)**

## PLANT - STOCK READY TO GO



**CAT D11T**  
2011



**CAT 966H**  
2013



**TADANO**  
TR250M-4 CRANE



**TADANO**  
TR250-5 CRANE



**CAT MOTOR GRADER**  
120H



**INGERSOLL-RAND ROLLERPACK**  
27T



**BOMAG BW212 PAD FOOT ROLLER**  
2013



**MAHINDRA VX90 4X4**  
2021

## TRUCKS - STOCK READY TO GO



**MERCEDES AXOR 2628 14000L WATER TANKER**  
(2008)



**MERC-BENZ ACTROS 3331 ROCK BIN**  
(2008) X 3



**VOLVO 18000L WATER TANKER**  
(2012) 5 AVAILABLE



**MERCEDES ACTROS 3331 TIPPER TRUCK**  
(2007)

Call us now

**+27 (0)11 555 2000**

or visit

**[www.blcplant.com](http://www.blcplant.com)**

for our latest stock.





Largest stock of parts in the southern hemisphere. Service exchange units available.

PARTS

[www.blcplant.com](http://www.blcplant.com)

+27 11 555 2000

[info@blcplant.com](mailto:info@blcplant.com)

Corner Wynberg Road and 2nd Avenue, Kew



6 MONTHS WARRANTY on refurbished components



CATERPILLAR  
Dozer Engines



CATERPILLAR  
Dozer Final Drives



CATERPILLAR  
Grader Transmissions



CATERPILLAR  
Loader Axles



CATERPILLAR  
Loader Transmissions



CATERPILLAR  
Grader Axles



CATERPILLAR  
Transfer Box



CATERPILLAR  
Off Highway Transmissions

Call us now +27 (0)11 555 2000 or visit [www.blcplant.com](http://www.blcplant.com) for our latest stock.





## *Insist on Genuine Turbochargers!*

TurboDirect S.A the largest OEM turbocharger distributor in Africa - we supply brand new Genuine Brand turbochargers, offer repairs using brand new Genuine parts, build service exchange turbochargers, and provide the first and only certified/accredited turbocharger specific training course on the market.

TurboDirect S.A - the true turbocharger experts



**Cut out the Middleman - buy Direct from the Importers!**

Scan to visit our  
Store now



| 011 392 5195

| [www.turbodirect.co.za/store](http://www.turbodirect.co.za/store)

| Unit A03 corner Airbus & Agusta Road, Denel  
Kempton Campus Bonaero Park

**Garrett**  
ADVANCING MOTION



**MITSUBISHI**  
TURBOCHARGER

**IHI** TURBO



**BorgWarner**



# GOOD USED EARTHMOVING PARTS AND EQUIPMENT

# STM

**MINING EQUIPMENT PTY(LTD)**

Tel: (011)894-6192 / (011)894-3377

Fax: (011)894 7914

[barney@stmmining.co.za](mailto:barney@stmmining.co.za)

[donovan@stmmining.co.za](mailto:donovan@stmmining.co.za)

**Office Hrs: Mon-Fri 07h00-17h00**



**CAT 930**  
R380 000 +VAT



**275-5**  
NO TRANSMISSION STRIPPING



**D375-6 MACHINE**  
STRIPPING



**KVA435 D9A**  
VOLVO ENGINE



**KVA 450-500 C18**  
CAT ENGINE



**D375-5**  
STRIPPING FOR PARTS



**FULLY REBUILT 140G GRADER**  
WITH WARRANTY



**CAT 740B1P**  
C15 ACERT



**CAT D10T**  
TRANSMISSION



**140H GRADER**  
SERIAL \*9TN00567\*



**740 ADT DUMPERS X 2**  
STRIPPING FOR PARTS



# GOOD USED EARTHMOVING PARTS AND EQUIPMENT

## STM

### MINING EQUIPMENT PTY(LTD)

Tel: (011)894-6192 / (011)894-3377  
 Fax: (011)894 7914  
[barney@stmmining.co.za](mailto:barney@stmmining.co.za)  
[donovan@stmmining.co.za](mailto:donovan@stmmining.co.za)  
 Office Hrs: Mon-Fri 07h00-17h00



**MULTIPLE TRACK LINK ASSEMBLY'S**



**MULTIPLE BUCKETS**



**MULTIPLE BOOMS & STICKS**



**MULTIPLE H FRAMES**



**MULTIPLE CYLINDERS**



**MULTIPLE CABS**



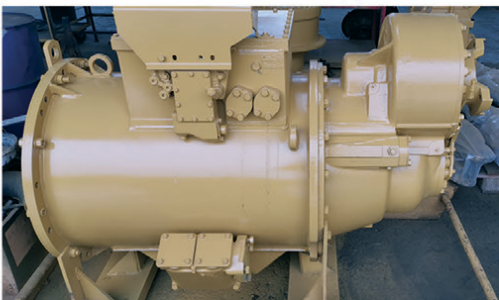
**Recon C11  
HEAD AND CRANK**



**REMAN SUB / CAT C9**



**785C  
TORQUE CONVERTER**



**RECON 789C TRANSMISSION**



**777D  
TORQUE CONVERTER**



**D10T RECON  
SERVICE EXCHANGE FINAL DRIVES**



**CAT 140G  
TRANS RECON  
S/EXCHANGE**

**STRIPPED  
ENGINES**

3304/6  
3204  
3126  
3406  
3408  
3412  
3508  
3512  
3516

C6.4  
C7  
C9  
C11  
C13  
C15  
C18  
C27  
C32

**MACHINES**

**EXCAVATORS**

225  
317B  
318B  
320B  
325B  
330B  
320D  
323D  
330D

**LOADERS**

920  
930  
936G  
938G  
950A/H  
966G  
980F/G  
988B

[www.stmmining.co.za](http://www.stmmining.co.za)

PO Box 6456, Dunswart 1508, 40 Michelson RD. Westwood, Boksburg



# Primeplant (Pty) Ltd



Supplying  
genuine & the  
best replacement  
parts on the market

**FIELD  
SERVICES  
NOW  
AVAILABLE**



Tel: 011 979 4853

sales2@primeplant.co.za - 066 489 4892

sales3@primeplant.co.za - 066 489 4893

[www.primeplant.co.za](http://www.primeplant.co.za)



Manufacturers names, numbers and descriptions are used for reference purposes only & is not implied that any parts listed is the product of these manufacturers.



# MAYFAIR GEARBOX<sup>®</sup> NATIONWIDE

## MAXIMIZE EFFICIENCY, MINIMIZE DOWNTIME

Mayfair Gearbox's Off-Highway  
Machinery Restoration Specialists!



Unlocking the Power of Industry: Mayfair Gearbox, the Trailblazing Force in Off-Highway Machinery Repair and Remanufacturing. Welcome to a world where excellence and innovation converge seamlessly, propelled by the largest black-owned industry business in history.

Operating across multiple branches in South Africa, Botswana, and Namibia, their expertise spans borders, delivering unparalleled services. Harnessing the dynamic capabilities of dyno testing on both Manual and Auto Off-Highway Machines, Mayfair Gearbox ensures peak performance and reliability. With a relentless commitment to quality-driven company ethics, their operations are Allison Approved, SABS, ISO 9001, and SANS 10279 Accredited.

Coupled with an extensive warranty and round-the-clock on-site assistance, Mayfair Gearbox empowers you to conquer any challenge that comes your way.



## UNITS FOR SALE



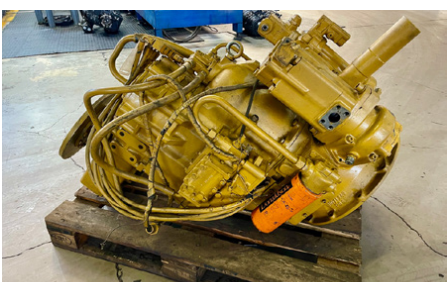
**CAT D8 DOZER ENGINE**  
For R150 000



**CAT D8 TRANSMISSION**  
For R149 870



**MANITOU FORKLIFT TRANSMISSION**  
For R20 000



**VOLVO L120 TRANSMISSION**  
For R88 000

**Gear Up for Success. Contact Mayfair Gearbox Now!**



[www.mayfairgearbox.co.za](http://www.mayfairgearbox.co.za)



+2711 493 8687



**Tyron Knott:** 079 495 7224



[tyron@mfgb.co.za](mailto:tyron@mfgb.co.za)





It's more than a part,  
**It's moving  
forward together**



PASSION FOR PARTS

**Specialists in Aftermarket  
Earthmoving Parts and Solutions**

Connect with us



+27 11 614 0070 | [sales@itrafrica.com](mailto:sales@itrafrica.com) | [www.itrafrica.com](http://www.itrafrica.com)







# New Year, New Goals, New Parts!

Manufacturer's names, numbers & descriptions are used for reference purposes only & it is not implied that any part listed is the product of the manufacturers.

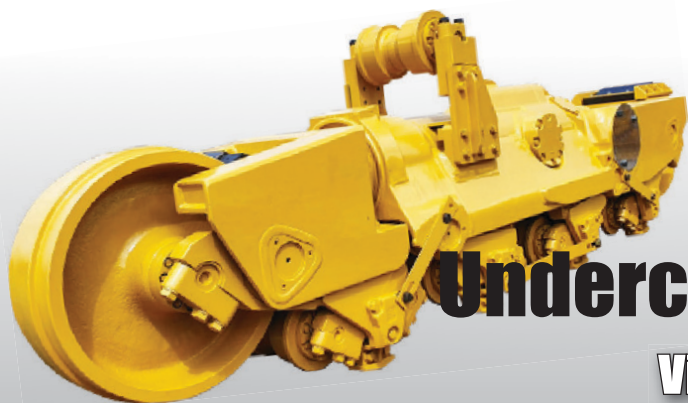




THE EXPERTS  
IN EARTHMOVING  
MACHINERY COMPONENTS



POWERING  
PERFORMANCE  
**ONE PART**  
AT A TIME.



We carry an extensive range of  
**New, Used &  
Reconditioned  
Undercarriage Components**

Visit our website for available stock

## WE STOCK THE FOLLOWING COMPONENTS

- COMPLETE TRACK FRAMES
- TRACK SPRINGS & ADJUSTERS
- LINK ASSEMBLIES, IDLERS,
- ROLLERS, GROUSER PLATES
- SPROCKETS and more...

**Over 250 Machines  
in Stock !!**

New stock added every month.



## WE STOCK USED & REFURBISHED PARTS FOR THE FOLLOWING BRANDS

**BELL**

**CASE**

**CAT**

**DOOSAN**

**HITACHI**

**UCB**

**JOHN DEERE**

**KATO**

**Kawasaki**

**KOBELCO**

**KOMAT'SU**

**LIEBHERR**

**mitsubishi**

**SUMITOMO**

**TEREX**

**VOLVO**

Office: +27 82 691 9524 • Adriaan: +27 71 234 6234 • Email: [admin@duraparts.co.za](mailto:admin@duraparts.co.za)  
223 Denne Rd. Witpoort, Brakpan 1540

**[www.duraparts.co.za](http://www.duraparts.co.za)**





# Earth Mach

**MINING AND CONSTRUCTION EQUIPMENT**



Office: +27 17 843 2072

## Sales

Chris: +27 81 728 6914

Chris Jnr: +27 83 675 8128

## Parts

Cindy: +27 72 757 2105

Michelle: +27 72 650 6603

- BACK HOE LOADERS (TLB) • BLOCK HAULERS (GRANITE) • LANDFILL COMPACTORS
- BULL DOZERS • EXCAVATORS / WHEEL EXCAVATORS • SKID STEERS • ROLLERS



Repairs on all types of equipment Cummins engine conversion on Komatsu TLB's / Repair & supply of New radiators break & clutch repairs / General repairs & rebuilding / Auto electrical repairs & rewiring / Fuchs oils & greases / Field service repairs

## GENIUNE SEM PARTS QUALITY AT ITS BEST



**DISTRIBUTORS OF SEM CONSTRUCTION EQUIPMENT**  
**THE PERFORMANCE YOU NEED THE SUPPORT YOU EXPECT**



**MOTOR GRADERS**



**WHEEL LOADERS**



**ROLLERS**

[www.earthmach.co.za](http://www.earthmach.co.za)





**Address:** V & M Junction, c/o Lavender & Linvelt Rd, Bon Accord

**Telephone:** 012 007 0278 | 082 374 0582 (Workshop) | 082 736 5768 (Rustenburg) | 079 296 1678 (Sales) | 072 216 7334 (Middelburg)

**E-Mail:** [workshop@myprolink.co.za](mailto:workshop@myprolink.co.za) | [pumps@myprolink.co.za](mailto:pumps@myprolink.co.za) • **Website:** [www.prolinkhydraulics.co.za](http://www.prolinkhydraulics.co.za)



- HYDRAULIC CYLINDERS
- SEALS - HYDRAULIC, EARTHMOVING & AUTOMOTIVE
- RUBBER HOSE, STEEL TUBE & FITTINGS
- ONSITE LINE BORING
- POWERPACKS

#### REPAIR, SUPPLY AND TEST OF PUMPS & PARTS

- Repair & Supply of Cast Iron & Aluminium Pumps & Motors
- Kawasaki K3V, K5V, K7V (63, 80, 112, 140, 180, 200, 280)
- Kawasaki M5X (130, 180)
- Rexroth A10V (18, 28, 45, 60, 71, 100, 140) A6VM160
- Hitachi HPV (102, 116, 145)
- Vickers PVE (19, 21)
- Vickers PVH (74, 98, 131)
- Vickers TA1919
- Danfoss M46, MPT044
- Sunstrand PV (20, 21, 22, 23, 24)
- Testing of All Hydraulic Pumps & Motors with Digital Test Certificate

PRO LINK  
LINE BORING

**FTF**

**KATO**

**DOOSAN**

**HITACHI**

Sumitomo

**CASE**  
CONSTRUCTION

**mitsubishi**

PRO LINK  
SEALS

**VOLVO**

**KOBELCO**

**KOMATSU**

**LIEBHERR**

**BELL**

**CAT**

**JOHN DEERE**



# TRACKS & EQUIPMENT



## YOUR PARTNER IN MINING EQUIPMENT SOLUTIONS



We offer extended engineering solutions in the Manufacture, Fabrication, Refurbishment of Buckets, Bowls and Supply of Undercarriage and GET in the mining and related industries.

*The Paramount Group wishes everyone a Merry Christmas & Happy New Year!*

Paramount has been trading since 2013. We offer professional engineering services to the mining industry. We strive for innovation and utilize the best materials available in the market and offer best fit solutions for our customers.

Understanding our customers' requirements is of importance.

Paramount sources and provides the best engineering solutions that one suitable for your operations.

Paramount has aligned with the best manufacturers within this industry- Combi Wear parts (GET), ITM (Undercarriage), SSAB on their Hardox and XMOR range. With these partnerships we are able to service large mining companies from a manufacturing and refurbishment perspective.



PROUD SUPPLIERS OF:



Contact us on [sales@paramounttracks.com](mailto:sales@paramounttracks.com) & [sales@paramount-equipment.com](mailto:sales@paramount-equipment.com)  
or visit our website at [www.paramounttracks.com](http://www.paramounttracks.com)

**Gauteng**  
32 VAN BUUREN ROAD  
HANS MERENSKY OFFICE PARK  
BEDFORDVIEW, JHB  
+27 10 007 3258

**Mpumalanga**  
2 WATT STREET  
INDUSTRIAL AREA  
MIDDELBURG  
010-007-3109

**Northern Cape**  
18 KALK STREET,  
INDUSTRIAL AREA, KATHU  
TEL: 082-902-6376 /  
071-860-7978

**Zimbabwe**  
24 GEORGE DRIVE  
MASASA  
HARARE, ZIMBABWE  
+263-785-552-186

**Botswana**  
PLOT 454  
JWANENG  
TEL: 00 27 007 3258  
+267 71 968 840

**Ghana**  
NO.12 IKM 73 PLAZA,  
4 GATEWAY STREET,  
COMMUNITY 12, TEMA, GHANA  
+233-2044-13989

**Lesotho**  
SEHALAHALA STREET, NO34,  
RACECOURSE AREA, MASERU  
TEL: +266-5111-6442 /  
+266-6200-6442

**DRC**  
AVENUE KIGOMA N°1  
LUBUMBASHI  
CONGO (KINSHASA)  
+243-99-022-0661



# MID PLANT SERVICES

**NEW EXCAVATOR PARTS, COMPONENTS AND REPAIRS**



: +27 (0)11 967 0055

: +27 (0)11 967 0060



: [SALES@MIDPLANT.COM](mailto:SALES@MIDPLANT.COM)



: 273 3RD AVENUE, BREDELL,  
KEMPTON PARK, 1619



: [WWW.MIDPLANT.COM](http://WWW.MIDPLANT.COM)

**THE ALTERNATIVE SUPPLIER FOR DOOSAN, HYUNDAI, VOLVO  
AND MOST CHINESE EXCAVATORS SOLD IN SOUTH AFRICA.**

**FOLLOW US ON:**



# 2024

# HAPPY NEW YEAR

## Now Available at Mid Plant Services

**At Mid Plant Services, we make an effort to acquire new and diverse parts to ensure that we meet the needs of all our customers.**

**If we don't have a part in stock, we will do our best to acquire it promptly.**



**NEW STOCK**

- Hitachi Main Hydraulic Pumps (HPV102, HPV118 & HPV145)
- Rexroth AP2D28 Hydraulic Pump
- DX225 Trenching Bucket
- 20Ton Bucket Assy
- 30Ton Bucket Assy
- Engine Parts and Build Kits
- Hydraulic Pump Parts
- Swing Motor Parts
- Track Adjusters
- Travel Devices



# Engine Build Kits

## WHAT'S INCLUDED IN THE ENGINE KIT:

- PISTONS
- LINERS
- RINGS
- MAIN BEARINGS
- BIG END BEARINGS
- SMALL END BEARINGS
- CAM BUSHES
- COMPLETE GASKET SET
- INLET VALVES
- EXHAUST VALVES
- VALVE GUIDES



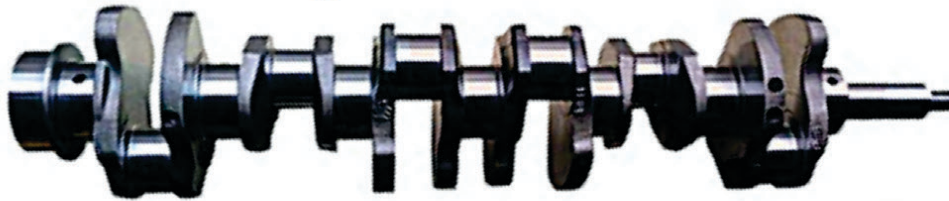
FOLLOW US ON:



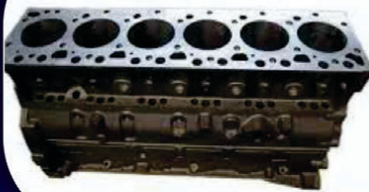
2024  
HAPPY NEW YEAR

**DE08 | DE12 | DB58 | D1146 | 6CT (CUMMINS) | 6BT (CUMMINS) | D6BT (HYUNDAI)**

**LOOSE PARTS AVAILABLE, ENQUIRE NOW WHILE STOCK LASTS.**



**VARIOUS ENGINE  
CRANKSHAFTS**



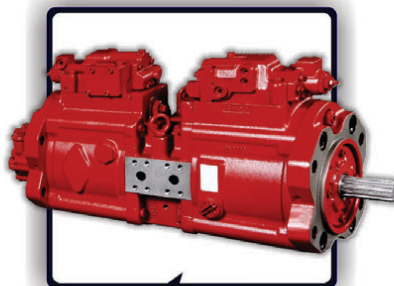
**STOCK AVAILABLE:**  
**DE08, DE12, DB58, D1146**  
**CYLINDER BLOCKS**



VARIOUS  
TRACK ADJUSTERS



VARIOUS  
FINAL DRIVES



VARIOUS MAIN  
HYDRAULIC PUMPS



VARIOUS  
SWING REDUCTIONS

\*All manufacturers names, numbers, symbols and pictures are for reference only. It does not imply that any of the parts are the product of these manufacturers.

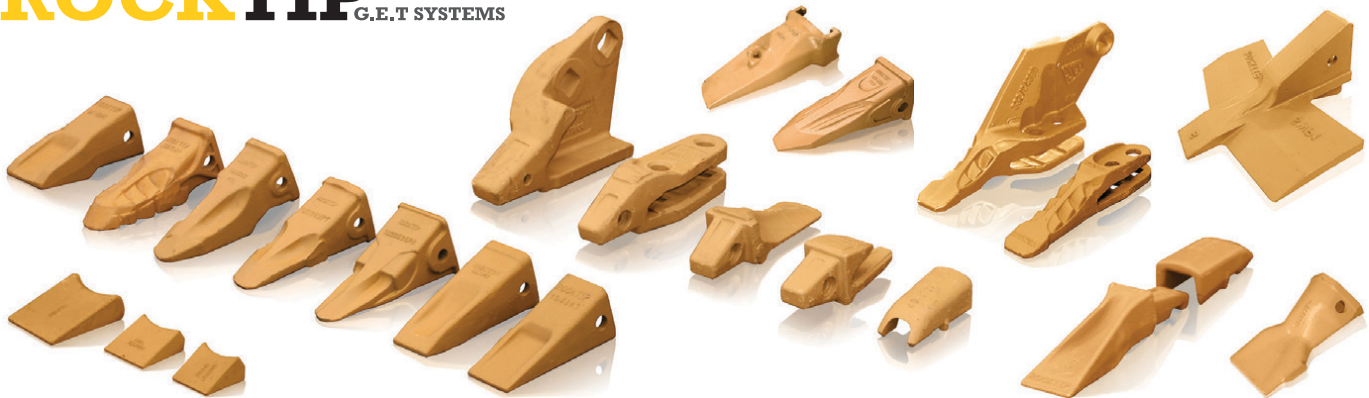




**SPEC-CAST WEAR PARTS**  
*Trusted to deliver*

Spec-Cast Wear Parts (PTY) Ltd is a leading manufacturer specializing in the supply of ground engaging tools, undercarriage, undercarriage components, track frames, suspension group replacement parts, agricultural wear parts, general castings and forgings for the construction, mining and agricultural industries.

**ROCKTIP** G.E.T SYSTEMS



Teeth and Adapters for Various Models



Wear Protection



Blades, Cutting Edges, End Bits and Grader Wear Parts

**Manufacturers of G.E.T to fit:**

CATERPILLAR	TEREX	ESCO	LIEBHERR	H & L	BOBCAT
KOMATSU	JCB	HYUNDAI	DAEWOO	BUCYRUS	MTG
NEW HOLLAND	MASSEY FERGUSON	CASE	BOFOR	LIUGONG	KUBOTA

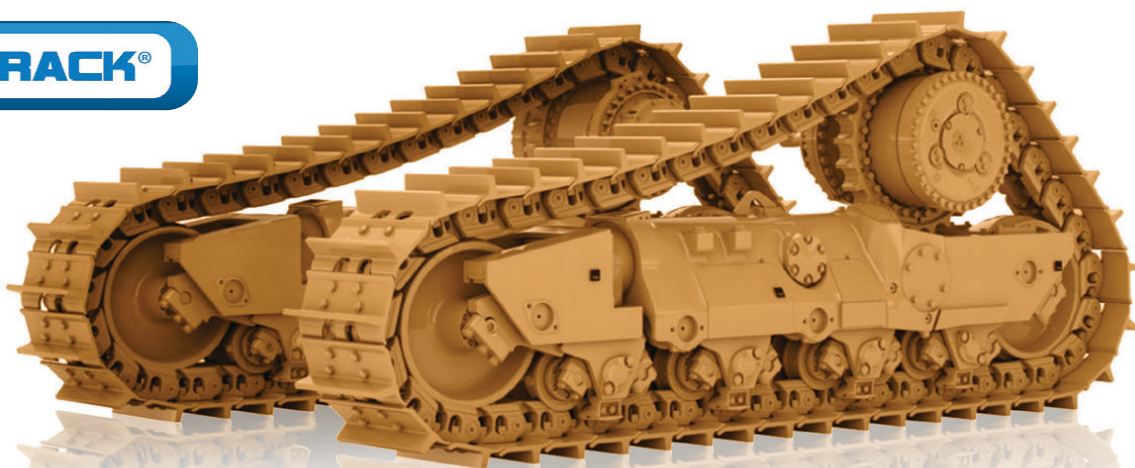
Manufacturer's names, numbers, symbols and descriptions are used for reference purposes only and it is not implied that any part listed above is the product of the manufacturers.



Spec-Cast offers a wide range of undercarriage components covering the entire range of modern crawler machine applications in the construction, mining, utility, forestry, road, building, and agricultural industries. Covering all makes and models of machines, from drilling machines to hydraulic excavators, as well as dozers, auxiliary machines, conveyors and customised solutions.

**PINETOWN BRANCH  
NOW OPEN**

**Vema TRACK®**



**Spec-Cast Wear Parts is an authorized Dealer for ITM and VEMATRAK undercarriage parts.**  
Call our undercarriage experts today!



**Chains**



**Rollers**



**Sprockets**



**Idlers**



**Shoes**



**Rubber Tracks**

**CATERPILLAR**

6018 RH90  
6030 RH120E  
6040/50  
RH170/200  
6060 - RH340  
7495 - 495HRH  
D8, D9, D10 & D11

**HITACHI**

EX1200  
EX1800/1900  
EX2500/2600  
EX3500/3600  
EX5500/5600  
EX8000

**KOMATSU**

PC1250  
PC2000  
PC3000  
PC4000  
PC5500  
D375  
D475

**LIEBHERR**

R9100  
R9150  
R9250  
R9350  
R9400  
R995  
R996  
R9800

**Our track workshop is available to support all your undercarriage needs**

Turning of Pins & Bushes  
Remove/Fit Track Shoes

Re-Build Idlers  
Re-Shell Rollers

Re-Strip Grouser Shoes  
Re-Rim Sprockets

With branches and distributors located in prime areas throughout South Africa, as well as several African countries, Spec-Cast is able to provide the Earthmoving, Mining and Agricultural industries with an efficient, cost effective supply and distribution network.

**JHB HEAD OFFICE**

+27 11 396 1717/13  
aimee@spec-cast.com  
11 Elgin Street, Pomona,  
Kempton Park, Johannesburg

**MIDDELBURG**

+27 13 813 1413  
middelburg@spec-cast.com  
6 Jaspis Street  
Middelburg, Mpumalanga

**[www.spec-cast.com](http://www.spec-cast.com)**

**NORTHERN CAPE**

+27 53 010 1304  
northerncape@spec-cast.com  
Section C3, Portion of Farm Waterraad  
Kathu, Northern Cape

**PINETOWN**

+27 31 392 5998  
kzn@spec-cast.com  
54 Westgate Place, Westmead  
Pinetown, KwaZulu Natal

Follow us:







**SPEC-CAST WEAR PARTS**

*Trusted to deliver*

## CATERPILLAR & KOMATSU DOZER & EXCAVATOR TRACK FRAMES



### SERVICE EXCHANGE

Our Service Exchange Program provides you with a high-quality track frame rebuild solution. All PEX units are like-new, quality track frames that is on hand for delivery to keep your machine productive and keep your costs minimal.

Spec-Cast's PEX units gives you the advantage of an immediate trade-out of critical components that allows your machine to get back to work as quickly as possible.

### TRACK FRAME REPAIRS

Spec-Cast offers partial repairs and full track frame rebuilds, using only quality approved parts including some OEM components that is critical to the longevity of the frame. Strict adherence to our QCP [Quality Control Procedures] provides peace of mind and builds trust in the Spec-Cast Brand. Spec-Cast's Track Frame Repairs covers a wide range of crawler machines types such as dozers, excavators and shovels across multiple manufacturers and applications.

### TRACK FRAME COMPONENTS

Caterpillar and Komatsu Dozer aftermarket track frame components of the highest quality and standard are stocked for immediate supply.

- Bogie Pins and Bogie Pads
- Roller and Idler Caps
- Track Guides
- Equalizer Bars and repair components
- Trunnion's and repair components
- Bushings and Seals
- Minor Bogies



#### JHB HEAD OFFICE

+27 11 396 1717/13  
[undercarriage@spec-cast.co.za](mailto:undercarriage@spec-cast.co.za)  
11 Elgin Street, Pomona,  
Kempton Park, Johannesburg

#### [www.spec-cast.co.za](http://www.spec-cast.co.za)

**MIDDELBURG**  
+27 13 813 1413  
[middelburg@spec-cast.co.za](mailto:middelburg@spec-cast.co.za)  
6 Jaspis Street  
Middelburg, Mpumalanga

**NORTHERN CAPE**  
+27 53 010 1304  
[northerncape@spec-cast.co.za](mailto:northerncape@spec-cast.co.za)  
Section C3, Portion of Farm Waterraad  
Kathu, Northern Cape

Follow us:





**INTRODUCING**



## EXTREME IMPACT AND ABRASION RESISTANT WEAR PLATE

**ENGINEERED TOUGH & DUCTILE, LIKE NO OTHER WEAR PLATE**

**QT-PLUS® wear life is 3 to 5 times longer than AR400 commodity wear steel.**

QT-PLUS® proprietary chemistry and unique thermal heat-treating process produces a premium quality, severe impact and abrasion resistant plate unmatched in the industry. This incredibly tough and through-hardened steel with extraordinary ductility, is produced with tightly controlled carbon levels for ease of weldability, and excellent formability.



**SPEC-CAST WEAR PARTS**

*Trusted to deliver*



## EXTREME ABRASION RESISTANT CHROMIUM CARBIDE OVERLAY PLATE

**INCREDIBLE HARDNESS, UNRIVALED PERFORMANCE**

CHROME WELD™ 600 is a 600 Brinnell chromium carbide plate that is ideal for surfaces requiring high levels of abrasion resistance.

CHROME WELD™ 600 typical hardness ranges from 58-62 HRC based on weld deposit thickness. The surface of the plate exhibits numerous hairline cracks which are a natural stress relieving phenomenon that enable it to be formed, bent, and rolled without damage.



**TRUCK BED LINERS · DOZER LINERS · CHUTES · SCREENS  
BUCKET WEAR STRIPS · IMPACT WEAR PLATES · HOPPER LINERS**

### JHB HEAD OFFICE

+27 11 396 1717/13  
info@spec-cast.co.za  
11 Elgin Street, Pomona,  
Kempton Park, Johannesburg

### [www.spec-cast.co.za](http://www.spec-cast.co.za)

**MIDDELBURG**  
+27 13 813 1413  
middelburg@spec-cast.co.za  
6 Jaspis Street  
Middelburg, Mpumalanga

**NORTHERN CAPE**  
+27 53 010 1304  
northerncape@spec-cast.co.za  
Section C3, Portion of Farm Waterraad  
Kathu, Northern Cape

Follow us:







176 Barbara Rd, Elandsfontein, Johannesburg, Gauteng, South Africa

Mining Equipment, Components and Parts Specialists

WhatsApp: +27 72 338 2196 | Email: [info@dozer.co.za](mailto:info@dozer.co.za) | Website: [www.dozer.co.za](http://www.dozer.co.za)



## COMPONENTS

### CAT 773F /775F DUMP TRUCK



**CAT 773F /775F**  
Final Drive & Brake Gp



**CAT 773F /775F**  
Differential Gp



**CAT 773F /775F**  
Transmission Ar



**CAT 773F /775F**  
Support As (A-Frame)

### CAT 777D DUMP TRUCK



**CAT 777D**  
Final Drive & Brake Gp



**CAT 777D**  
Differential Gp



**CAT 777D**  
Transmission Ar



**CAT 777D**  
Rear Suspension Cylinder Gp

### CAT 785C/D DUMP TRUCK



**CAT 785C/D**  
Final Drive & Brake Gp



**CAT 785C/D**  
Differential Gp



**CAT 785C/D**  
Transmission Ar



**CAT 785C/D**  
Rear Suspension Cylinder Gp

### CAT 789C DUMP TRUCK



**CAT 789C**  
Final Drive & Brake Gp



**CAT 789C**  
Differential Gp



**CAT 789C**  
Transmission Ar



**CAT 789C**  
Front Suspension & Wheel Gp





[www.instagram.com/dozerearth](https://www.instagram.com/dozerearth)

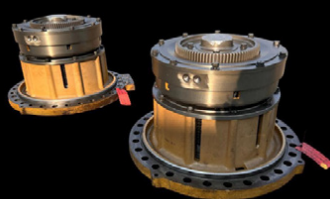


[www.facebook.com/dozerparts](https://www.facebook.com/dozerparts)

## CAT D10T TRACK DOZER



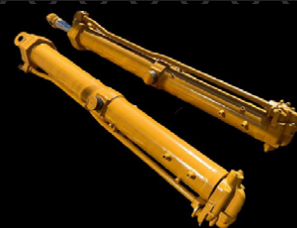
**CAT D10T**  
Final Drive Gp



**CAT D10T**  
Steering Clutch & Brake Gp



**CAT D10T**  
Ripper Lift Cylinder Gp



**CAT D10T**  
Blade Lift Cylinder Gp

## CAT 834H WHEEL DOZER



**CAT 834H**  
Wheel & Final Drive Gp



**CAT 834H**  
Differential Gp



**CAT 834H**  
Torque Converter Gp



**CAT 834H**  
C18 Engine Ar

## CAT 980H WHEEL LOADER



**CAT 980H**  
Wheel & Final Drive Gp



**CAT 980H**  
Differential Gp



**CAT 980H**  
Lift Cylinder Gp



**CAT 980H**  
C15 Engine Ar

## CAT 992G WHEEL LOADER



**CAT 992G**  
Wheel & Final Drive Gp



**CAT 992G**  
Differential Gp



**CAT 992G**  
Torque Converter Gp



**CAT 992G**  
Bucket Tilt Cylinder Gp

## LIEBHERR R9350 EXCAVATOR (BACKHOE)



**LIEBHERR R9350**  
Final Drive Gp



**LIEBHERR R9350**  
Main Pump

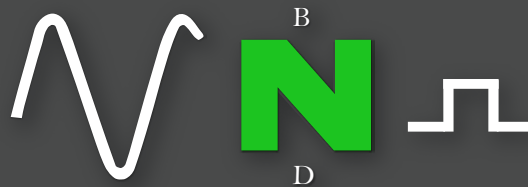


**LIEBHERR R9350**  
Splitter Box



**LIEBHERR R9350**  
Bucket Cylinder





ISO 9001 Accredited

Authorised Service Centre



New Beginnings Designs is the official  
***Dana Authorised Service Center***  
for Sub-Saharan Africa and stockist for Dana Products:  
Spicer/Clark/Hurth transmissions, axles and spare parts.

Repair and Overhaul of Axles and Transmissions



We offer a comprehensive  
range of **Genuine Spicer Parts** suitable  
for the following brands: Atlas Copco, Bell, Caterpillar,  
Dezzi, Hitachi, Hyster, JLG, Kalmar, Komatsu, Liebherr, Linde,  
Manitou, Sandvik, Terex and many more.

## CONTACT US

Phone: +27 11 791 4120 | WhatsApp: +27 64 660 0964

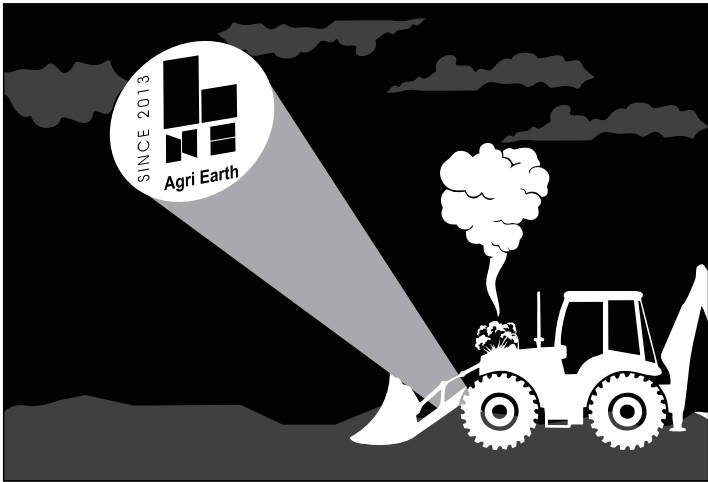
Email: [info@nbdesigns.co.za](mailto:info@nbdesigns.co.za)

Website: [www.nbdesigns.co.za](http://www.nbdesigns.co.za)

Address: 1146 Minnie Postma Avenue, Florida 1709







SINCE 2013



+27 (0)861 888 008

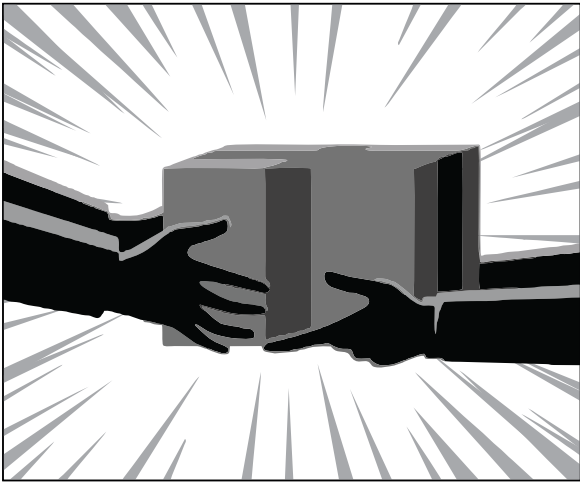
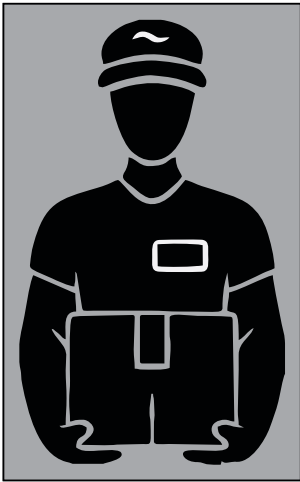
+27 (0)83 327 3237 (A/H)

LNE@LNE-AgriEarth.com

www.LNE-AgriEarth.com

Agri Earth

 **CARRARO** Spare Parts Authorized Dealer







**RHINO**  
Earthmovers  
Excavator Hammers



**SALES & RENTALS OF  
EXCAVATORS & TLB'S  
WITH ATTACHMENTS.**



**HEAD OFFICE**  
**074 922 2382**

**RENTALS**  
**082 887 8636**

**SALES**  
**071 670 8707**

**BREAKING FOR SPARES**

- CAT 330D
- CAT 320D
- KOMATSU PC400

**MACHINES FOR SALE**

- CAT 307 PIPED
- CAT 312 PIPED
- CAT 931 TRUCK LOADER
- CAT 320D & 330D PIPED
- JCB JS200 & JS205 PIPED
- VARIOUS SIZE EXCAVATOR

**ENGINES FOR SALE**

- CAT 3306
- CAT 3052
- CAT 3064
- CAT C7
- KOMATSU 60125 (375-5)
- ISUZU 6HK1 (HITACHI)

**FOR ONSITE AIRCON REPAIRS**

**CONTACT DAVE: 083 600 3308**

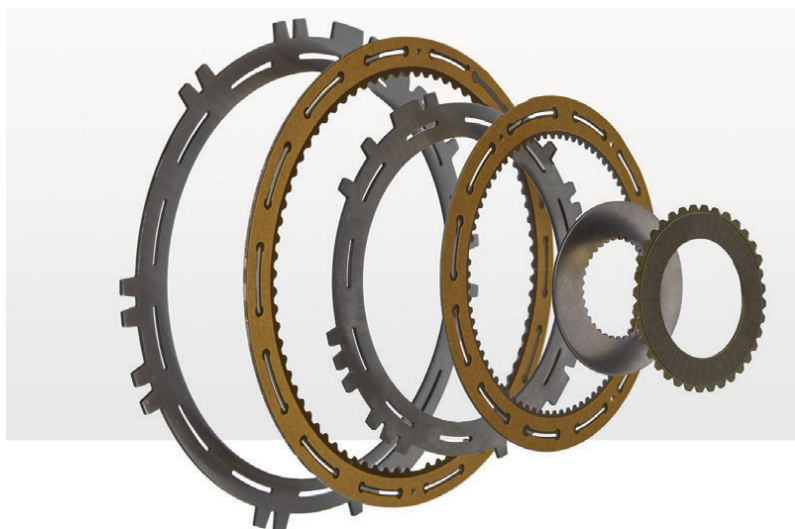
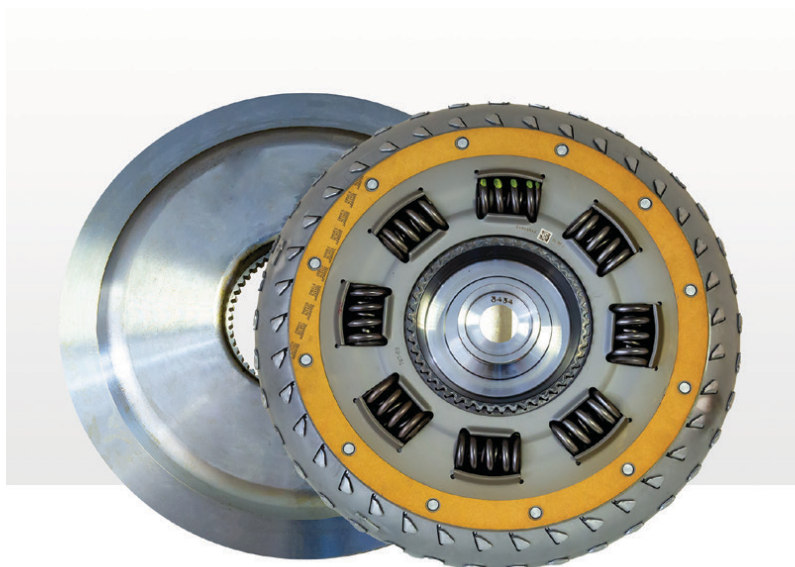
[sales@rhinohammers.co.za](mailto:sales@rhinohammers.co.za) | [hire@phplant.co.za](mailto:hire@phplant.co.za) | [cjago@global.co.za](mailto:cjago@global.co.za)

[www.rhinohammers.co.za](http://www.rhinohammers.co.za) | [www.phplant.co.za](http://www.phplant.co.za)





## ALLISON TRANSMISSION DISCS & SEAL KITS



29 Romeo Street, Boksburg, South Africa  
[www.sintech.co.za](http://www.sintech.co.za) | [sales@sintech.co.za](mailto:sales@sintech.co.za) | +27 (0)11 823 2359



@sintechza



@sintechza



@sintech



## GOOD USED EARTHMOVING PARTS AND EQUIPMENT

# STM

**MINING EQUIPMENT PTY(LTD)**

Tel: (011)894-6192 / (011)894-3377

Fax: (011)894 7914

[barney@stmmining.co.za](mailto:barney@stmmining.co.za)

[donovan@stmmining.co.za](mailto:donovan@stmmining.co.za)

Office Hrs: Mon-Fri 07h00-17h00

### OUR PRODUCTS & SERVICES

We supply second hand machines and good used parts for most makes of Earthmoving Equipment ie: Cat, Komatsu.

We buy second hand machines to strip for components and parts, dead or alive to keep in stock for customers.

We have a repair shop where we do components and Repair machines for Customers.



### ENGINE REBUILDS



### MACHINE REBUILDS



[www.stmmining.co.za](http://www.stmmining.co.za)

PO Box 6456, Dunswart 1508, 40 Michelson RD. Westwood, Boksburg



**BREAKING GROUND  
HAS NEVER  
BEEN EASIER**



**MANUFACTURERS, SUPPLIERS  
AND STOCKISTS OF:**

**CUTTING EDGES | MOLD BOARD LINERS | GRADE BLADES  
TIPS AND ADAPTORS | RIPPER SHANKS | END BITS**

**WE MANUFACTURE, SUPPLY AND STOCK G.E.T. FOR:**  
**CAT | KOMATSU | VOLVO | HITACHI | BELL | LIEBHERR | JCB | CASE  
TEREX | FURUKAWA | LIUGONG | SANY | SANYO | SHANTUI | FIAT**

**WEARPACT ALSO OFFERS A SPECIALIST BUCKET REPAIR SERVICE**

**WEARPACT**

☎ **011 420 2257 / 2172 / 2216  
011 845 3234 / 3272 / 3051  
011 421 4705**  
✉ **mwwrp@mweb.co.za**

\*MANUFACTURER'S NAMES, NUMBERS & DESCRIPTIONS ARE USED FOR REFERENCE PURPOSES ONLY. IT IS NOT IMPLIED THAT ANY PART LISTED IS THE PRODUCT OF THE MANUFACTURERS.

**[www.wearpact.co.za](http://www.wearpact.co.za)**

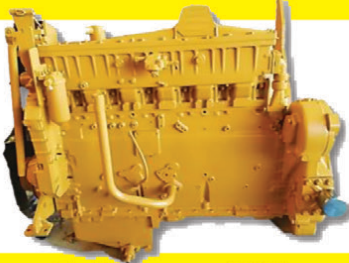


# INDUSTRIAL PLANT SOLUTIONS

## D8R COMPONENT PROMOTION

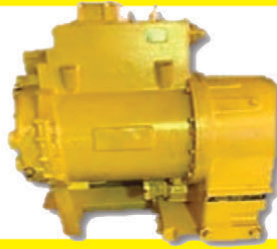


### ENGINE



Full Recon With  
Dyno Report

### TRANSMISSION



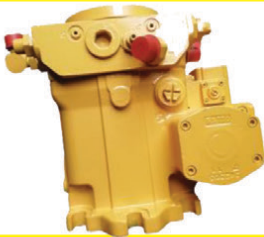
Full Recon

### LongBLOCK



Full Recon - CAT  
Spec 20R4277

### PUMPS REMAN



Transmission,  
Hydraulic & Steer

### TORQ CONV



D8T Torque  
Convertor

### DIFF STEER MODULE

For Spares

### TORQ CONV



Full CAT  
Reman

### FINAL DRIVES



Full Recon

### TRACKS



Good Used

# AVAILABLE ON THE FLOOR NOW!

New, used and reconditioned components - all makes.

If it's from your machine, we'll find a replacement!!

### Contact Us:

✉: [hello@ipsglobal.net](mailto:hello@ipsglobal.net)

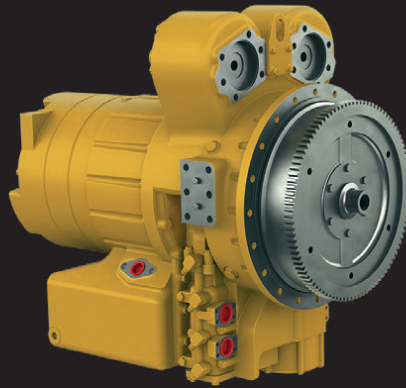
📘: [facebook.com/IndustrialPlantSolutions](https://facebook.com/IndustrialPlantSolutions)



WhatsApp Message  
+27 (0)76 034 2877

## Inspections & Assessments Also Done

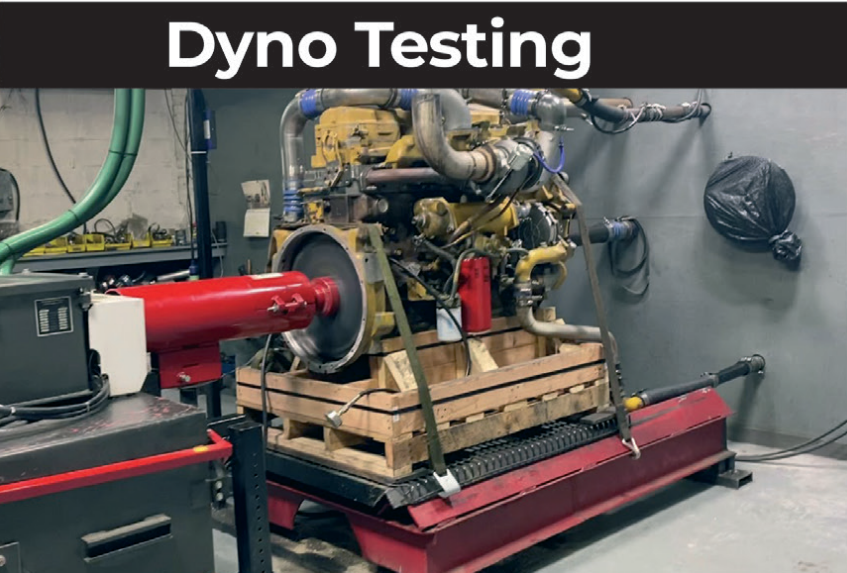




**Allison Fuller • Clark • Caterpillar • Funk Twin Disk**



# Dyno Testing

A large yellow industrial engine is mounted on a wooden pallet, which is placed on a red dynamometer (dyno) system. The engine is connected to a red flywheel and a black dynamometer unit. The setup is in a workshop with a grey wall and various hoses and equipment visible in the background.

# Bell Dropboxes



We use a mixture of experience and sophisticated technology to perform diagnostics, allowing us to take a focused approach to repairing transmissions.



# earthbroker

your sourcing solution for new & used equipment & machinery

Looking forward to  
working together for a  
Prosperous & Successful

# 2024

Happy New Year

During the Holiday Season more than ever, our thoughts turn gratefully to our advertisers who have made our progress possible. And in this spirit we sincerely say Thank You.





Cray van Staden and the  
Cape Town team

## SHUMANI OPENS CAPE TOWN OFFICE TO SERVICE THE WESTERN CAPE REGION

**Shumani Industrial Equipment**, the largest black-owned and managed industrial supplier of its kind in South Africa, officially launched its Cape Town regional office on 17 July, under the management of Cray van Staden.

A highly experienced professional with over 18 years' industry expertise, van Staden's exceptional drive and qualifications make him the ideal candidate. "With his deep understanding of the industry, having him onboard will significantly benefit our organisation," comments Shumani MD Victor Nemukula.

Two technicians who bring a combined experience of over 33 years to the regional office have also been appointed. One specialises in engine combustion machines, while the other focuses on electrical machinery. "Their extensive knowledge and skills in their respective areas will enhance our operational capabilities," adds Nemukula. In addition, a forklift controller with 27 years' experience has been carefully selected for this role.

"Each member of our team has been chosen with great care to ensure that our business performs optimally and efficiently. We are confident in our ability to meet and exceed customer expectations," highlights Nemukula. While boasting large clients with countrywide operations, Shumani initially subcontracted its Western Cape business to a third-party service provider.

However, this impacted the supplier's value proposition of a two-hour response time and 24/7 service offering. It then decided to roll out a regional office in Parow Industrial, Cape Town, which has already attracted the attention of new and existing customers. The selection of the new Cape Town premises was a deliberate process aimed at ensuring optimal convenience for valued customers. The location was chosen with the goal of being centrally positioned and allowing for easy access. Situated in close proximity to major roads such as the N1, N2, and N7, Shumani can now guarantee swift response times when addressing customer needs. The Cape Town regional office is equipped with a fully functional workshop, enabling skilled technicians to perform major repairs efficiently and effectively. "The facility enhances our ability to provide a comprehensive customer service, giving them peace of mind that their machines receive the necessary attention when required," says Nemukula. The sizeable facility can accommodate 60 machines at once. It allows for efficient inventory management and rapid respond to rental requests or any other operational demands.

"As part of our expansion plans, we are also considering establishing a dedicated rental fleet for our Cape Town branch in the near future. This strategic initiative will provide our customers with an even broader range of options, further enhancing our ability to meet their needs effectively.

"Overall, the careful selection of our premises and the considered inclusion of key facilities and services demonstrate our commitment to delivering exceptional customer experiences and positioning ourselves for future growth," says Nemukula. Shumani specialises in the provision of industrial materials handling equipment, catering to a wide range of requirements and sectors. Its offering encompasses various machines, from cleaning equipment to powerful 45 t container reach stackers. "We take pride in not only selling, but also maintaining, all the equipment supplied by our esteemed partner, the Goscov Group," adds Nemukula. The supplier's key focus is the logistics, agriculture, and construction markets. Recognising the dynamic nature of these industries, it has strategically positioned itself to remain at the forefront of the ever-evolving business landscape. "Our commitment is to serve all potential customers who require our equipment for their business operations, regardless of their size, ranging from small-scale enterprises to corporate entities.

"There is immense potential for growth in our venture. Although we are new to the Western Cape region, we understand that establishing ourselves among prospective customers may pose a challenge initially. However, we are confident that once businesses align with us, they will swiftly recognise the tangible benefits and advantages we bring to their operations," concludes Nemukula.

**Shumani Contacts: Victor Nemukula** - Managing Director | Phone: 0861 748 6264 | Cell: 079 873 9163

Email: [vnemukula@shumani-industrial.co.za](mailto:vnemukula@shumani-industrial.co.za) | Web: [www.shumani-industrial.co.za](http://www.shumani-industrial.co.za)

**Shaun Morton** - Operations Director | Phone: 0861 748 6264 | Cell: 082 894 6033 | Email: [smorton@shumani-industrial.co.za](mailto:smorton@shumani-industrial.co.za)





**ICE VS Electric: Baoli KBD 25 2.5T internal combustion engine forklift and a Baoli KBE 25 2.5T electric forklift perform in different applications**

## NARROWING DOWN FORKLIFT CHOICES

Choosing the right forklift for a particular application is a tough decisions that has become even tougher with the introduction of modern battery technology that allows electric machines to go toe-to-toe with the best internal combustion engine (IC) forklifts at increasingly competitive prices. Yet there are still areas where IC engines win the day and others where simple lead acid battery derivatives are hard to beat in terms of cost per ton moved. And while it is relatively safe to say that any of the above options will do the job perfectly well in 99% of normal operations, it is not to say they will be the optimum, nor the most cost-effective solution. With an expected lifespan that can span a decade or more it pays to make good decisions upfront and base decisions on solid technical studies and the right advice from trustworthy suppliers with a wide choice of equipment, the right infrastructure and solid reputation to uphold.

### Changing market

In this regard Smith Power Equipment is at the forefront of forklift technology and has a wide range of industrial equipment and advanced forklifts from the world's second largest supplier of forklifts from the Kion Group. Its range of Baoli forklifts share a lot in common with the group's counterparts from Linde and other well-known brands, yet the distinctive blue machines are more focused on efficiency and cost-effective ownership. Weighing in on the electric versus IC forklift debate materials handling area sales manager for Smith Power Equipment, Edwarno Parenzee, says there are many factors that need to be considered. Seemingly insignificant things like the slope of a yard or distance to the loading point can play a massive role and swing the advantage in favour of a particular type of machine. There are other considerations like emission requirements in certain environments that may exclude even the cleanest burning IC engines and in some instances even disqualify lead acid batteries due to their slight gas emission. "Temperature can also play a part where freezer rooms and cold rooms have their own challenges making them some of the toughest environments to operate in. Not only do lead acid (and to a much lesser extent lithium ion) batteries suffer reduced run, but icy conditions can lead to loss of traction and unforeseen mechanical issues as a result of cold and condensation. Considering these environments are most likely to require emissionless operation it is clear to see how selecting forklift come with a fair share of quandaries," says Edwarno.

### Hidden challenges

He explains that hot environments, dusty conditions, corrosive chemicals, aisle widths, rack heights, underfoot conditions and hundreds of other circumstances need to be weighed up before making a final decision. Even fuel storage or charging station space may be a limiting factor and needs to be considered upfront alongside any future plans for expansion. Smith Power Equipment area sales manager, Thami Mavuso, says understanding this type of information is critical whether buying one forklift or procuring an entire solution for a large operation. He expands that there is no straight forward tick list that can be checked by a user as there are likely to be unexpected pitfalls that can upset the best laid plans. "Even in writing this article we set out to give a Top 10 benefits of each powerplant from lithium to lead acid and IC motors but it soon became apparent that applying simple formulas to a complex requirement is unwise. Rather call on professionals to study and simulate operational requirements and spend the time required to make informed decisions. A professional equipment supplier should always take the time to understand the requirements of a client and if there is room to improve the client's plans to make suggestions and adapt accordingly.

### Trusted partner

"In the event that any uncertainty exists companies like Smith Power Equipment are usually willing to adopt try-before-you-buy approaches where customers best laid plans can be tested with short term rental equipment that can be trialled and purchased if successful; or another plan made if the selected machines do not perform as well as expected in certain environments," says Thami. Both experts agree that dealing with professionals is critical to the successful purchase of forklifts. Experience and expertise cannot easily be learned on YouTube or from a textbook and is the reason why Smith Power Equipment invests heavily in expertise provided by seasoned professionals like Thami and Edwarno and supported by a management team that have decades of experience in selling, servicing and maintaining all types of industrial machines and equipment.

Issued on behalf of Smith Power Equipment, Geoffrey Green, Digital Marketing Manager, Tel: (011) 284 2053, Email: [geoffrey@smithpower.co.za](mailto:geoffrey@smithpower.co.za), Web: [www.smithpower.co.za](http://www.smithpower.co.za)



# earthbroker

your sourcing solution for new & used equipment & machinery



The **Earthbroker** is published monthly and 5400 copies are sent to all the mines, quarries, and all companies dealing with earthmoving and construction in South Africa, Africa and some overseas countries.

We are **ABC accredited**.

We also have a website where anyone can view the magazine, which is updated monthly with the latest changes and advertisements. Please view our E-Mag on [www.earthbroker.co.za](http://www.earthbroker.co.za)

Our E-magazine is uploaded monthly to Facebook, Instagram, LinkedIn and our mobile App.

## Reasons to advertise in the Earthbroker

The Earthbroker magazine is an excellent medium for advertisers in the mining, construction, forestry and agriculture industries. If you are a company that provides services or products related to either of the industries, you should consider advertising in Earthbroker for the following reasons:

1. **Targeted Audience:** The Earthbroker has a targeted readership consisting of professionals and individuals involved in the construction and earthmoving industry. These readers are potential customers for your business, making the Earthbroker an effective way to reach your target audience.
2. **High Readership:** The Earthbroker has a high readership among industry professionals, including contractors, engineers, and construction company owners. Advertising in the Earthbroker can help you reach a large number of potential customers.
3. **Cost-Effective:** Advertising with the Earthbroker is often more cost-effective than other advertising methods. You can reach a targeted audience without spending a large amount of money on advertising.
4. **Credibility:** The Earthbroker has a reputation for providing reliable and trustworthy information about the construction and earthmoving industry. By advertising in the Earthbroker you can help establish your business as a reputable and trustworthy source of products and services.
5. **Brand Awareness:** Advertising in the Earthbroker can help increase brand awareness for your business. By consistently advertising in the Earthbroker, you can build a strong brand presence and establish your business as a leading provider of products and services in the construction and earthmoving industry.
6. **Long Shelf Life:** Earthmoving magazines have a long shelf life, meaning that your advertisement will be visible for a longer period. This can help increase the chances of your advertisement being seen by potential customers who may not have seen it during the initial publication.

In conclusion, advertising in the Earthbroker magazine can be an effective way to reach a targeted audience, increase brand awareness, and establish your business as a reputable provider of products and services in the construction and earthmoving industry. If you are looking for an affordable and effective way to reach potential customers, advertising in earthmoving magazines is a great option to consider.

Advertising in earthmoving magazines can be an effective and affordable way to reach a targeted audience of professionals and individuals interested in the construction and earthmoving industry. With a high readership and reputation for providing reliable information, advertising in these magazines can help establish your business as a reputable source of products and services. Additionally, earthmoving magazines have a long shelf life, providing the opportunity for your advertisement to be seen by potential customers over a longer period. If you want to increase brand awareness and reach potential customers in the construction and earthmoving industry, advertising in earthmoving magazines is a great option to consider.

We accept about 5 editorials a month which we insert free of charge. Should you have an editorial which is relevant to the industry, we will gladly give it consideration.

For details of our prices on a full page, half page or quarter page, please call me on **083 456 4027** or e-mail me at [janine@earthbroker.co.za](mailto:janine@earthbroker.co.za).

We do not ask anyone to sign a contract, however we do insist on a full calendar month's notice for cancellation.

Please note that all quotations exclude VAT. We do insertions, (own printing costs) at R1.50 each excluding VAT.



# earthbroker

your sourcing solution for new & used equipment & machinery

- Why deal with different people each month when you can deal with the same friendly people you always deal with.
- We are proudly South African. Support your country who understand your needs.
- WE are ABC Accredited - this means we do print the amount we say we print. No pie in the sky number. We send direct to the correct people in the industry.



Should you have people/companies you would like added to our database , we will happily do that should they not already be on our database.



# Please call us for a prompt response and great service!

- Your advert is advertised FREE on our website and on our online digital magazine.
- We design FREE of charge and all changes are done FREE of charge.
- NO contracts to be signed.  
(Just a full calendar months notice is required for cancellation)

## We offer excellent service and design.

Our magazine  
is also available  
online in which your  
advert is advertised  
free of charge



Audit Bureau of Circulations  
of South Africa





For further info on how to get your company listed in the Earthbroker please call...**Janine - 083 456 4027**

## H.V.R TURBOS SINCE 2001

WE ARE THERE FOR YOU ... CALL, WE DO!

### KOOP & VERKOOP

**GRONDVERSKUIWINGSMASJINERIE  
TROKKE, SLEEPWAENS, VURKHYRSERS  
EN BOORMASJIENE  
OP**

**WWW.HVRTURBOS.CO.ZA**

**HENNING  
083 755 2177**

### CAT C7 962 H

Engine Complete-Runner  
Engine serial nr KHX37783

Tiaan  
078 126 5383

### CAT 3406 16G

SERIAL NR 93U  
COMPLETE ENGINE ZERO  
HOURS REBUILD-SERVICE  
EXCHANGE

Bart  
083 327 4172



## CMS MECHANICAL SERVICES

- Repair on all Earthmoving Equipment
- Rebuild of CAT Engine & Transmissions
- Field Services

EST 2002



**Thelani Scholtz 072 874 1870**  
**Dawie Scholtz 082 968 9748**

**www.cmsmechanical.co.za**

### CAT 320D

R950 000,00 + VAT

Dewald Hattingh:  
+27(0) 72 547 2198  
+27(0) 11 973 3737  
info@atlasmasjiene.co.za



### 2012 BELL B30D

R 1 350 000  
EACH EXCL VAT

Caliber Machinery  
Jean Claude van Dam  
012 940 0688



### 2X 2018 CAT 966L FRONT END LOADERS

2X 2014 CAT 986H  
FRONT END  
LOADERS  
REFURBISHED

DUNCAN - Cell: 083 626 5588  
ANTON - Cell: 082 923 5397  
JAAP - Cell: 082 892 1327  
LORAIN - Cell: 076 021 4344



### CAT D10T & D11T ENGINES

0 Hour rebuilds

Francois  
+27 66 281 9753  
francois@inmine.co.za



### CAT 6015B EXCAVATOR

+27 72 338 2196  
info@dozer.co.za  
www.dozer.co.za

For further info on how to get your company listed in the Earthbroker please call...**Janine - 083 456 4027**



For further info on how to get your company listed in the Earthbroker please call...**Janine - 083 456 4027**



## CAT D6T DOZER FOR SALE

SER NO: CAT00D6TCSMC00581\*

HOURS: 11294.4

Gerrard Muller - +27 78 026 3772

# LJR



Auto electrical field service trouble shooting and repair on most HD equipment specializing in **HITACHI / CAT / VOLVO / BELL / KOMATSU.**

We also provide HVAC System Repair and Re-gas.

**GOOD NEW AND USED PARTS NETWORK**

**YOU HAVE TRIED THE REST  
NOW CHOOSE THE BEST**

Email: [ljrearthmoving@gmail.com](mailto:ljrearthmoving@gmail.com)

Tel: 061 523 4997



## CAT 7 7 X QSM 11 CUMMINS ENGINES. NON RUNNERS 73E

35K EACH

Allan - 063 500 2837



## KOMATSU WA380-6

Contact Stuart Mckenzie  
Tel: 033 212 2181  
Cell: 082 558 7901  
Email: [sjm@mckenzieplant.co.za](mailto:sjm@mckenzieplant.co.za)



## CAT 777F DUMP-TRUCK

2010 MODEL  
GOOD RUNNER  
CALL FOR DETAILS

THOMAS MITTAG  
Cell: +27 72 545 6223  
[info@mae-equipment.com](mailto:info@mae-equipment.com)



## CAT 330C

R750 000 + VAT

Dewald Hattingh: +27(0) 72 547 2198 +27(0) 11 973 3737  
[info@atlasmasjiene.co.za](mailto:info@atlasmasjiene.co.za)



## CAT 777D DUMP TRUCKS

+27 72 338 2196  
[info@dozer.co.za](mailto:info@dozer.co.za)  
[www.dozer.co.za](http://www.dozer.co.za)



## CAT 980G

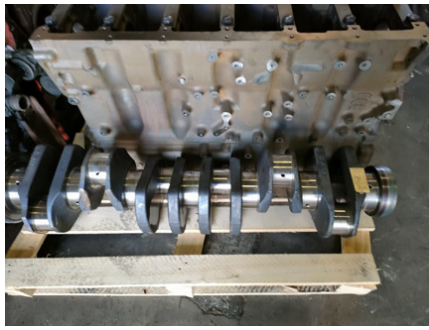
R1 500 000,00 + VAT

Dewald Hattingh:  
+27 (0)72 547 2198  
+27 (0)11 973 3737  
[info@atlasmasjiene.co.za](mailto:info@atlasmasjiene.co.za)

For further info on how to get your company listed in the Earthbroker please call...**Janine - 083 456 4027**



For further info on how to get your company listed in the Earthbroker please call...**Janine - 083 456 4027**



## **CAT 3406 C CRANKSHAFT STD AND POLISHED**

**R35K Excl**

Tiaan  
078 126 5383



## **CAT 3412 V12 ENGINE. 1000 HRS.**

**240K**

Allan - 063 500 2837



## **CUMMINS 8.3 130KW**

**R125K Excl**

Bart  
083 327 4172



## **CAT 224E**

**R250 000,00 + VAT**

Dewald Hattingh: +27(0) 72 547  
2198 +27(0) 11 973 3737  
info@atlasmasjiene.co.za



## **2 X QSX 15 ENGINE. NON RUNNERS.**

**45K each**

Allan - 063 500 2837



## **CAT 930**

**R380 000 +VAT**

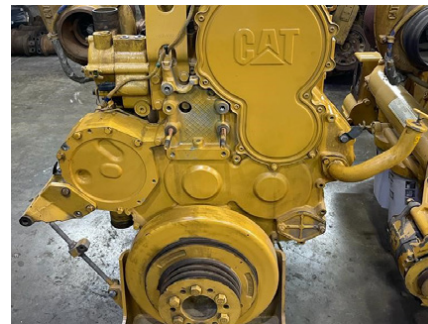
(011)894-6192(011)894-3377  
barney@stmmining.co.za  
donovan@stmmining.co.za



## **CAT 777D DUMP-TRUCK**

2011 model  
low hours  
Call for Details

THOMAS MITTAG  
Cell: +27 72 545 6223  
info@mae-equipment.com



## **CAT C18 ENGINE**

Hennie  
+27 82 414 1393  
hennie@inmine.co.za



## **WIRTGEN RECYCLER WR250**

2015 model  
low hours  
Call for Details

THOMAS MITTAG  
Cell: +27 72 545 6223  
info@mae-equipment.com



## **CAT MOTOR GRADER**

**120H**

Contact  
+27 11 555 2000  
info@blcplant.com

For further info on how to get your company listed in the Earthbroker please call...**Janine - 083 456 4027**



For further info on how to get your company listed in the Earthbroker please call...**Janine - 083 456 4027**



## INGERSOLL-RAND ROLLERPACT 27T

Contact  
+27 11 555 2000  
info@blcplant.com



## BOMAG BW 177-4

R550 000,00 + VAT

Dewald Hattingh: +27(0) 72 547  
2198 +27(0) 11 973 3737  
info@atlasmasjiene.co.za



## CAT D11T 2011

Contact  
+27 11 555 2000  
info@blcplant.com



## TADANO TR250-5 CRANE

Contact  
+27 11 555 2000  
info@blcplant.com



## BELL 225A LOGGER WORK READY.

R395 000

Contact Deryck Eddy  
076 551 2637  
ctcplantinterafica@gmail.com



## TEREX WHEELED EXCAVATOR

MONTEBERT HAMMER,  
BUCKET, HYDRAULIC  
QUICK COUPLER  
3 000 HRS | 2007 | R785 000

Contact Deryck Eddy  
076 551 2637  
ctcplantinterafica@gmail.com



## 2 X QSX 15 ENGINE. NON RUNNERS. 45K EACH

Allan - 063 500 2837



## BELL 2606E

R950 000,00 + VAT

Dewald Hattingh:  
+27 (0)72 547 2198  
+27 (0)11 973 3737  
info@atlasmasjiene.co.za



## MAHINDRA VX 90-4WD GP BKT A/C

Serial No:  
MDZBE4BECK6C50114  
YOM: 2019 / Engine: NJH5WLE1023  
ODO:507 / Hours: 1490.6

Contact  
+27 11 555 2000  
info@blcplant.com

For more info on advertising your  
machine or spares in the classifieds  
please call Janine on 083 456 4027  
janine@earthbroker.co.za

For further info on how to get your company listed in the Earthbroker please call...**Janine - 083 456 4027**



## Agriculture / Forestry

Bell Equipment  
CATERLIM  
Equipment Parts & Engines  
Great North Power Solutions  
LNE Agri-Earth

## Attachments

CATERLIM  
Great North Power Solutions  
Rhino Excavator Hammers

## Buckets

CATERLIM  
INMINE - Inala mining services  
Industrial Plant Solutions  
Great North Power Solutions  
LIMCAT  
Paramount Group  
STM Mining  
Wearpact

## Dyno Testing

CATERLIM  
Great North Power Solutions  
LIMCAT  
Mzantsi Transmissions  
Power Transmission Technology

## Exhausts

Rustpet Exhausts

## Engineering

Caliber Machinery  
CATERLIM  
Earthmach  
East Coast Gears  
Gears for Africa  
Great North Power Solutions  
LIMCAT  
Mayfair Gearbox  
New Beginning Designs  
Pro Link Hydraulics  
Ultimate Exchange Components

## Gearbox / Transmissions

CATERLIM  
East Coast Gears  
Equipment Parts & Engines  
Great North Power Solutions  
LIMCAT  
Mayfair Gearbox  
Mzantsi Transmissions  
Power Transmission Technology  
Sintech  
Vortex Transmissions

## Gears

CATERLIM  
East Coast Gears  
Gears for Africa  
Great North Power Solutions  
LIMCAT

## Generators

Beyers Truck and Plant  
Great North Power Solutions  
Handax Machinery  
TraxGlobal

## G.E.T / Undercarriage

Blumaq  
Brakecore Supply Co.  
CATERLIM  
Centrax  
ESP  
Great North Power Solutions  
Handax Machinery  
ITR Africa  
Industrial Plant Solutions  
Mid Plant Services  
Paramount Group  
Rocktech  
Spec-Cast Wear Parts  
STM Mining  
Wearpact

## Hydraulics

CATERLIM  
Industrial Plant Solutions  
Great North Power Solutions  
LIMCAT  
Mid Plant Services  
Power Transmission Technology  
Pro Link Hydraulics  
One Stop Procurement  
Ultimate Exchange Components

## Lubricants & Oils

Bell Equipment  
CATERLIM  
Earthmach  
Great North Power Solutions  
Handax Machinery

## Machine Hire

AmPlant  
BLC Plant Company  
Bulk Machine Hire  
Caliber Machinery  
Rhino Excavator Hammers

## New Machines

Bell Equipment  
Benetrax Machinery  
Beyers Truck and Plant  
Earth Mach  
Handax Machinery  
Rondebult Construction Machines

## New Parts

All Africa Supplies  
Bell Equipment  
Benetrax Machinery  
Beyers Truck and Plant  
Blumaq  
Brakecore Supply Co.  
CTC Plant Company  
Caliber Machinery  
CATERLIM  
Centrax  
East Coast Gears  
Equipment Parts & Engines  
ESP  
Great North Power Solutions  
Handax Machinery  
ITR Africa  
Industrial Plant Solutions  
JD Hoffman Earthmoving  
LNE Agri-Earth



## New Parts

Landbou Parts  
Mid Plant Services  
One Stop Procurement  
Prime Plant  
Paramount Group  
Pro Link Hydraulics  
Rhino Excavator Hammers  
Rondebult Construction Machines  
Rustpet Exhausts  
Sintech  
Shin-Li Trading  
Spec-Cast Wear Parts  
STM Mining  
TraxGlobal  
Ultimate Exchange Components  
Wearpact  
WEICHI SEM Parts

## Pumps

Blumaq  
CATERLIM  
Great North Power Solutions  
Hurricane Diesel  
Industrial Plant Solutions  
LIMCAT  
Mid Plant Services  
Pro Link Hydraulics  
Shin-Li Trading

## Seats / Upholstery

CATERLIM  
Equipment Parts & Engines  
Great North Power Solutions  
The Seat Connection

## Services

All Africa Supplies  
Bell Equipment  
Benetrax Machinery  
Beyers Truck and Plant  
Caliber Machinery  
CATERLIM  
Dura Sales  
Earth Mach  
Equipment Parts & Engines  
Gears for Africa  
Great North Power Solutions  
Handax Machinery  
INMINE - Inala mining services  
ITR Africa  
LNE Agri-Earth  
LIMCAT  
Mayfair Gearbox  
Power Transmission Technology  
Pro Link Hydraulics  
Prime Plant  
Mid Plant Services  
RC Investments  
Ultimate Exchange Components  
Vortex Transmissions

## Turbos

CATERLIM  
Equipment Parts & Engines  
Great North Power Solutions

## Turbos

Industrial Plant Solutions  
Turbo Direct

## Torque Convertors

CATERLIM  
Equipment Parts & Engines  
Great North Power Solutions  
ITR Africa  
Industrial Plant Solutions  
One Stop ProcurementSintech

## Tyres

Associated Equipment / Vendel Civils  
CATERLIM  
Great North Power Solutions  
Handax Machinery

## Used Machines

All Africa Supplies  
Atlas Masjiene  
AmPlant  
BLC Plant Company  
Caliber Machinery  
CATERLIM  
Dozer Earthmoving  
Dura Equipment Sales  
EarthComp Earthmoving  
Earthmach  
Great North Power Solutions  
INMINE - Inala mining services  
LIMCAT  
Mae Equipment  
McKenzie Plant Sales  
Mid Plant Services  
Paramount Equipment  
Plant Finder  
Rondebult Construction Machines  
STM Mining Equipment  
Vendel Equipment Sales  
WEICHI SEM Parts

## Used Parts

All Africa Supplies  
Bell Equipment  
BLC Plant Company  
Brakecore Supply Co.  
Beyers Truck and Plant  
Caliber Machinery  
CATERLIM  
Dozer Earthmoving  
Dura Parts  
East Coast Gears  
EarthComp Earthmoving  
Earthmoving Specialist  
Equipment Parts & Engines  
Great North Power Solutions  
ITR Africa  
INMINE - Inala mining services  
Industrial Plant Solutions  
JD Hoffman Earthmoving  
LNE Agri-Earth  
LIMCAT  
Mid Plant Services  
Paramount Group  
Plant Finder  
Prime Plant  
Pro Link Hydraulics  
RC Investments  
Rondebult Construction Machines  
STM Mining Equipment  
Shin-Li Trading  
TraxGlobal  
Ultimate Exchange Components  
WEICHI SEM Parts



# earthbroker

## your sourcing solution for new & used equipment & machinery

The Earthbroker is published monthly and 5400 copies are sent to all the mines, quarries, and all companies dealing with earthmoving and construction in South Africa, Africa and some overseas countries.

We are **ABC accredited**.

We also have a website where anyone can view the magazine, which is updated monthly with the latest changes and advertisements. Please view our E-Mag on [www.earthbroker.co.za](http://www.earthbroker.co.za)

Our E-magazine is uploaded monthly to Facebook, Instagram, LinkedIn and our mobile App.

We accept about 5 editorials a month which we insert free of charge. Should you have an editorial which is relevant to the industry, we will gladly give it consideration. For details of our prices on a full page, half page or quarter page, please phone me on 083 456 4027 or e-mail me at [janine@earthbroker.co.za](mailto:janine@earthbroker.co.za).

We do not ask anyone to sign a contract, however we do insist on a **full calendar month's notice** for cancellation.

Please note that all quotations exclude VAT. We do insertions, (own printing costs) at R1.50 each excluding VAT.

Classifieds at R500.00 excluding VAT for a business card size advertisement only.

**Janine Sargeant**  
(CELL) 083 456 4027  
[janine@earthbroker.co.za](mailto:janine@earthbroker.co.za)

**Should you want to receive a free copy of our magazine  
please email your details to [janine@earthbroker.co.za](mailto:janine@earthbroker.co.za)**

### Conditions of Acceptance for advertising

#### Adverts are subject to the following conditions:

1. Often we receive faxes with illegible letters or numbers. We accept no responsibility due to this.
2. We accept NO responsibility for errors in advertisements received telephonically.
3. We reserve the right to refuse placement or to place the advertisement/s as we see fit.
4. No responsibility will be taken for omission of advertisements, for any errors/colour-differences in advertisements or any results due to such errors.
5. We accept no responsibility for the quality of goods advertised. We merely bring buyers and sellers into contact with each other and we are not responsible for any results due to transactions made through the advertisements.
6. Please note one full calendar months written notice for cancellations.
7. Payment due prior to publication or interest will be charged.
8. There will be an annual increase of 10% at the beginning of each year.
9. The Earthbroker will not be held responsible for content of any advert inserted in our magazine.

### Quick Reference

COMPANY	BRANCH	DESIGNATION	CONTACT	TEL NO	CELL	EMAIL
Africa Truck & Plant	PMB	Sales	Denver Pillay	033 386 78 65	071 416 08 26	<a href="mailto:pillaydenver84@gmail.com">pillaydenver84@gmail.com</a>
Allied Wear Parts	JHB	Sales	Dean		064 067 6697	<a href="mailto:dean@alliedwearparts.co.za">dean@alliedwearparts.co.za</a>
Allied Wear Parts	JHB		Kerry		064 593 8778	<a href="mailto:kerry@alliedwearparts.co.za">kerry@alliedwearparts.co.za</a>
Armour Plant Sales	JHB	Director	Zander Goosen	+27 82 553 5750		<a href="mailto:sales@armourplant.co.za">sales@armourplant.co.za</a>
Armour Plant Sales	JHB	Sales & Marketing Manager	Ruben Gerber	+27 83 245 9330		<a href="mailto:sales@armourplant.co.za">sales@armourplant.co.za</a>
Atlas Masjiene	JHB		Dewald Hattingh	+27(0) 72 547 2198 +27(0) 11 973 3737		<a href="mailto:info@atlasmasjiene.co.za">info@atlasmasjiene.co.za</a>
Action Equipment Co	JHB	Sales	Yolanda	011 452 1298		<a href="mailto:yolanda@action.co.za">yolanda@action.co.za</a>
Andru Mining	JHB	Sales	Naren Birdju	(011)395 0200 / +27 82 859 0766		<a href="mailto:plantsales@andru.co.za">plantsales@andru.co.za</a>
Atlas Masjiene	JHB		Dewald Hattingh	+27(0) 72 547 2198 +27(0) 11 973 3737		<a href="mailto:info@atlasmasjiene.co.za">info@atlasmasjiene.co.za</a>
Atlas Service Centre	JHB		Fourie Von Tonder		083 301 1632	
Africaplant.com	Newcastle	Sales	Mark	034 318 3032	082 301 3961	<a href="mailto:admin@afriplant.com">admin@afriplant.com</a>
Afritool – Rent	JHB		Karen Abrams	011 974 2819	082 523 9777	<a href="mailto:karen.abrams@fluor.com">karen.abrams@fluor.com</a>
Alf's Tippers JHB	Sales		Alf Ferreira	011 824 0013	083 260 6929	<a href="mailto:alfplant@global.co.za">alfplant@global.co.za</a>



COMPANY	BRANCH	DESIGNATION	CONTACT	TEL NO	CELL	EMAIL
All Africa Supplies	JHB		Jody Da Silva	011 918 9976		sales@allafricasupplies.net
Amplant	Polokwane		Eddie Simpson	015 293 1221	082 904 7694	simpsons@amplant.co.za
Anric Enterprises	JHB		Ric de Nysschen	011 740 0975	082 647 9955	anric@cybertrade.co.za
Ant Lift Carry Cranes	JHB	Sales	Mathew Henderson		083 973 1378	mathew@maspower.co.za
Aquajet Profiles (Pty)Ltd	JHB	Director & Sales	Brad	011 908 5550	073 470 4958	info@aquajetprofiles.co.za
Arch Equipment	JHB		Greg Archibald		082 803 4227	archhire@mweb.co.za
Associated Equipment Co	JHB	Sales	Jaap	011 801 4911/2	082 892 1327	associated1@xnet.co.za
AVANT SA CPT			Wally	021 851 0722	076 688 3399	info@avantsa.co.za
Azrel Equipment	JHB	Sales	Mike Imrie	(010)590 8048	083 230 3118	mike@azrelequipment.com
Barloworld Equipment Co	Durban	Parts	Brett Woodhouse	031 705 8500	071 484 1035	bwoodhouse@barloworld-equipment.com
Barloworld Equipment Co	Durban	Parts	R. Haripersadh	031 705 8500		rharipersadh@barloworld-equipment.com
Barloworld Equipment Co	Newcastle	Parts	Milan Pather	034 315 2847	073 971 2046	mpather@barloworld-equipment.com
Barloworld Equipment Co	Newcastle	Sales	Brendan Moore	034 315 2847	073 781 8865	
Barloworld Equipment Co	Richardsbay	CRS	Rolfe Botes	035 797 6300	082 904 9619	jhumphries@bw-eq.com
Barloworld Equipment Co	Bloemfontein	Sales	Quentin Coetzee	051 4091200	078 460 2622	qcoetzee@barloworld-equipment.com
Bell Equipment	Richards Bay	Parts	Jackie Smith	035 907 9111	082 550 8791	bellparts@bell.co.za
Bell Equipment		Sales	Andrew Pretorius	011 928 9700	071 607 3978	partssales@bell.co.za
Bell Equipment	JHB	Used Parts	Fazel Patel	011 928 9700		usedparts@bell.co.za
Bell Equipment	JHB	Machine Sales	Myburgh	011 928 9700		sales@bell.co.za
Benetrax Machinery	JHB	Sales	Johan Coetzer	011 397 1313	071 599 5421	johanc@benetrax.co.za
Benetrax Machinery	JHB	Sales	Allan Webber	011 397 1313	071 599 5423	allanw@benetrax.co.za
Bert's Bricks (Pty)Ltd	Potchefstroom	Sales	Lizelle	(018)292 1615		marketing@bertsbricks.co.za
Beyers Track and Plant	Gauteng	Sales		(011)794 8271	(WhatsApp) 078 725 6917	beyers@truckandplant.co.za
BKB Van Wyk	JHB			017 712 2132		vanwykinfo@telkomsa.net
Blumaq	JHB		John Beukes	011 966 5092		john.beukes@blumaq.com
BLC Plant Company	JHB	Machine Sales	Luigi Stravino	011 555 2000	082 552 7017	luigistravino@blcplant.com
BLC Plant Company	JHB	Machine Sales	Paolo Stravino	011 555 2000	082 852 3721	paolostravino@blcplant.com
BLC Plant Company	JHB	Machine Sales	Andrew McCall	011 555 2000	082 256 0334	andrewmccall@blcplant.com
BLC Parts	JHB	Parts Sales	Robbie Stocks	011 555 2000	082 492 9263	
BLC Parts	JHB	Sales	Mike du Plessis	011 555 2000	082 508 2908	mikeduplessis@blcplant.com
BLC Parts	JHB	Sales	Clement van der Merwe	011 555 2000	073 202 8010	michaelmarriott@blcplant.com
BMH Trading International	Cape Town		Bradley	021 903 2667	082 780 0084	bradley@bmhtradinginternational.com
Bom-mach / Stampede	JHB	Sales	Jabu	011 394 5704		info@stampede.co.za
Brakecore Supply Co.	Ermelo (Head office)	Procurement	Gerrard Muller	017 819 3412	078 026 3772	gerrard@brakecore.co.za
Brakecore Supply Co.	JHB	Branch Manager	Clive Paul	011 826 3640	076 401 7885	clive@brakecore.co.za
Brakecore Supply Co.	JHB	Sales & Procurement	Collen Ntlhane	011 826 3640	079 318 9930	collen@brakecore.co.za
Bruforce	JHB		Craig	011 393 1298	083 627 2533	bruforce@lantic.co.za
Bulk Machine Hire	Bapsfontein	Sales	Neil Britz	066 197 0178		karen@bulkmachine.co.za
Burgers Equipment & Spares			Anka Burger	011 979 3636		admin.za@burgersafrica.com
C & J Earthmoving Repairs	JHB			011 025 9336	079 888 6071	mikecearth@gmail.com
CCMJ Earthmoving Solutions	JHB	Sales	Morne Venter		078 120 0659	morne@ccmj.co.za
CCMJ Earthmoving Solutions	JHB	Sales	Danie Maritz		082 854 9245	danie@ccmj.co.za
CMS Mechanical Services	Pretoria	Repairs	Thelani Scholtz		072 874 1870	cmsmech@telkomsa.net
CMS Mechanical Services	Pretoria	Repairs	Dawie Scholtz		082 968 9748	cmsmech@telkomsa.net
CPC Construction Spares	Cape Town		Chappie	021 981 4581	083 659 3395	chappiepc@gmail.com
Caldas Engineering & Manufacturing	JHB	Marketing	Melanie	011 453 7797		info@caldas.co.za
Caliber Machinery	Pretoria	Sales	JC van Dam	012 940 0688	079 888 6071	jc@calibermachinery.com
Capital Equipment Parts	JHB		Mark	011 568 4215		info@capiparts.co.za
Catech Engineering	JHB		Lee Bray	071 687 9274		lee@cattam.co.za
Caterlim	Polokwane	Sales		015 004 0165		rep@caterlim.co.za
Caterlim	Polokwane	Workshop		015 004 0591		rep@caterlim.co.za
Centrax	JHB	Sales	Trevor	011 392 5055	083 608 5550	trevor@centraxsa.co.za
Centrax	JHB	Sales	Renier Olivier	086 123 6872	083 321 8106	renier@centraxsa.co.za
Centrax	DBN	Sales	Steve	086 123 6872	083 613 0664	steve@centraxsa.co.za
Cranes Direct	Boksburg	Parts Sales	John Thage	011 894 8056	083 254 4068	john@cranesdirect.co.za
Cranes Direct	Boksburg	Sales	Mark Le Roy	011 894 8056	083 233 2140	mark@cranesdirect.co.za
CTC Plant Company	Cape Town	Owner	Colin McOwen	021 386 4190	082 440 4806	colin@ctcplant.co.za
CTC Plant Company	Cape Town	Sales	Evert Jooste	021 386 4190	082 825 8865	evert@ctcplant.co.za
CTC Plant Company	Cape Town	Sales	Peter Groenewald	021 386 4190	072 368 5581	peterg@ctcplant.co.za
CTC Plant Company	Cape Town	Sales	Cobus Dreyer	021 386 4190	073 187 3752	cobus@ctcplant.co.za
CTC Plant Company	Cape Town	Parts	Mark Swanepoel	021 386 4190	082 825 6966	marks@ctcplant.co.za
CTC Plant Company	Cape Town	Parts	Nico Vermeulen	021 386 4190	084 525 6966	nicv@ctcplant.co.za
CTC Plant Company	Cape Town	Service	Olla van den Heever	021 386 4190	082 467 1894	olla@ctcplant.co.za
CTC Plant Company	Cape Town	Transport	Dudley Maarman	021 386 4190	082 495 2640	transport@ctcplant.co.za
CTC Plant Company	Cape Town	Workshop Manager	Ben du Toit	021 386 4190		
Classic Dimension Stone Mining			Ernst	073 634 6303		crafford46@gmail.com
Classic Dimension Stone Mining			Elsa	082 521 7095		elsa@ccsbrits.co.za
DBZ Diesel Parts	JHB			087 751 4555	074 106 2158	jhb@dbzdiesel.com
DBZ Diesel Parts	Cape Town		Jason Martincich	021 556 6502	082 353 5971	jason@dbzdiesel.com
DBZ Diesel Parts	Durban			031 564 8091/2	082 565 8446	durban@dbzdiesel.com
D- MAN SALES	JHB	Sales	Wessels		072 172 7718	wessels@lpss.co.za
Deutz Diesel Engines	Meadowdale		Johan Reiners	(011)974 3549	082 457 1542	miero@icon.co.za
Deutz Diesel Power	Durban	Branch manager	Nivern Pather	031 700 2384	082 375 4912	nivern@deutz.co.za
Deutz Diesel Power	JHB		Nathan Kitchen	011 923 0600		nathan@deutz.co.za
DGI Trading	JHB		Henk Arnold	010 065 0888	083 233 0019	henk.arnold@dgitrading.co.za
Dirt Diggers	JHB		Vic Viljoen	011 023 6674	082 822 3915	vicv@merchantwest.co.za
Dosco Hydraulic Eng. cc	Montague Gardens		David Laubscher	021 551 2283	082 579 6465	david@doscocape.co.za
Dosco Hydraulic Eng. cc	Montague Gardens		Mike Hart	021 551 2283	082 228 5031	
Dozer Earthmoving	JHB		Lance Reynolds	011 452 1224	072 338 2196	info@dozer.co.za
Dozer Earthmoving	JHB	Specialized Sales	Chris Cronje	011 452 1224	082 491 5472	info@dozer.co.za
Dozer Earthmoving	JHB	Specialized Sales	Danie De Meyer	011 452 1224	071 224 3316	info@dozer.co.za
Dura Equipment	JHB	Sales	Johan Mynhardt	011 918 4760	066 279 7801	johan@durasaales.co.za
Dura Equipment	JHB	Sales	Danny Scholtz	011 918 4760	060 973 0799	dan@durasaales.co.za
Dura Equipment	JHB	Sales	Jerry van Niekerk	011 918 4760	082 895 5611	jerry@durasaales.co.za
Dura Equipment	JHB	Sales	Curtis Brown	011 918 4760	083 258 5784	curtis@durasaales.co.za



# Quick Reference

COMPANY	BRANCH	DESIGNATION	CONTACT	TEL NO	CELL	EMAIL
Dura Equipment	Cape Town	Sales	Gerrie du Randt	021 988 6618	082 950 7040	gerrie@durales.co.za
Dura Parts	JHB	Specialized Sales	Adriaan Booysen		071 234 6234	adriaan@duraparts.co.za
Dura Parts	International	Sales	Willem du Randt		082 691 9524	wac@duraparts.co.za
E&A Spares	Durban	Sales	Deva	031 700 5791/2	082 659 5521	easpaes@iafrica.com
EarthComp Earthmoving	Mpumalanga	Sales	Kobus		076 780 2463	marketing@earthcomp.co.za
EarthComp Earthmoving	Mpumalanga	Sales	Tertius		083 628 7773	marketing@earthcomp.co.za
Earth Mach	Mpumalanga		Chris	017 843 2072	083 232 8713	chris@earthmach.co.za
Earth Moving Plant & Trans.	Pinetown		Richard	031 705 1770	083 777 0152	richard@ept.co.za
Eazi Access	JHB	PR & Communications	Tralone		087 086 5039 / 079 010 8518	tralone.khoza@eazi.co.za
EHD Johannesburg		Sales	Lodewyk van As	011 870 5000		ehd@ehd.co.za
Earthmoving Machine Sales	KZN	Sales	Jason		083 412 1077	jason@sa-ems.co.za
East Coast Gears	KZN	Sales	Johan	031 701 3500	084 244 3324	eastcoastgears@gmail.com
ELB Equipment	Boksburg	Sales		011 306 0700		elb@elbquip.co.za
Emiliana Serbatoi SA	JHB	Sales	Darren		083 250 8481	darren@emilianaserbatoi.co.za
Emiliana Serbatoi SA	JHB	Sales	Mathew		083 973 1378	mathew@emilianaserbatoi.co.za
Equipment Parts & Engines	Kempton Park	New & Used Parts	Attie vd Bergh	011 571 9000	082 655 9276	info@equipmentparts.co.za
Equipment Parts & Engines	Kempton Park	Sales	Kirath Sinanin	011 571 9000	072 436 7215	info@equipmentparts.co.za
ESP	Isando	Div Manager	Adrian Erasmus	011 398 1700	083 449 0519	adriane@espa.co.za
ESP	Pretoria	Reg Manager	Willie v.d Merwe	012 804 6706	082 789 0828	williev@espa.co.za
ESP	Middleburg	Div Manager	Leon Bezuidenhout	013 246 2520	083 778 9877	leonb@espa.co.za
ESP	Pinetown	Reg Manager	Shaun Clarke	031 705 4200	082 413 1103	shaunc@espa.co.za
ESP	Cape Town	Reg Manager	Jaco Bekker	021 945 1030	072 384 4901	jacob@espa.co.za
ESP	Gqeberha	Branch Supervisor	Rainier Gerber	041 484 4575	083 698 1805	rainierg@espa.co.za
ESP	Bloemfontein	Reg Manager	Craig Wansbury	051 432 4501	082 413 2708	craigw@espa.co.za
ESP	Kimberley	Acting Parts Supervisor	Moses Bass	053 831 8349	084 313 3645	mosesb@espa.co.za
Filter Centre	Pinetown	Manager	Viyen Maharaj	031 700 9074	076 727 3985	info@filtercentre.com
Filvent	Witbank		Bernard	013 656 2726		workshopmanager@filvent.co.za
Fluid Blast Engineering	JHB		George Slabbert		082 550 1385	fluid.blast@live.com
Force 8 CC	Cape Town		Justin Nicoll	021 535 1117	082 373 9802	info@force8.co.za
Full Blast Hydraulics	JHB		Andre Calitz	(011)900 3790		info@fullblasthydraulics.com
Fusion Torque Components	JHB	Director	Eldred Carstens	011 828 9023	083 460 6790	eldredfusion@telkomsa.net
Gears for Africa	JHB	Sales	Carl	011 824 2017		carl@gearsforafrica.co.za
Gears for Africa	CPT	Sales	Carl	021 577 1030		carl@gearsforafrica.co.za
GET Spares	JHB	Sales	Raymond	(011)397 5276	082 655 2301	sales@getspares.co.za
GET Spares	JHB	Sales	Freddy	(011)397 5276	082 604 0045	sales@getspares.co.za
GET Spares	JHB	Sales	Clyde	(011)397 5276	082 581 5152	sales@getspares.co.za
Gillroy	Durban		Rob Gillit	031 765 2745	083 661 2057	info@gillroyplant.co.za
G-Man Trading	JHB	Sales	Luke Jr.	011 672 7011		lukej@gman.co.za
GO Industry - Dove Bid			John Cowing	0861 463 683	083 662 0237	john.cowing@liquidityservices.com
Great North Power Solutions	Polokwane	Sales		015 590 1886		rep@gnps.co.za
Grindright Engineering	Middelburg		Piet De Vos	013 246 2308	064 849 2320	grindright@gmail.com
Handax Machinery	JHB	Sales		011 3908160		Marketing@handaxmachinery.com
HL Du Plooy	Harrismith		Hennie Du Plooy	082 719 8744	082 574 4212	hennie@hlduplooyplant.co.za
Heavy Duty Earthmoving Parts			Jannie Burger	011 394 4125/6/7		jannie@hdep.co.za
Highland Bros	Gauteng	Sales	William Henderson		071 482 8675	william@highlandbrothers.co.za
HPE Africa	Jet Park	Sales Manager	Lani	011 397 4670		marketing@hpeafrica.co.za
HPE Africa	Durban	Branch Manager	Adam Armitage	031 700 3426		Adam.armitage@hpeafrica.co.za
HPE Africa	East London	Branch Manager	Leon Dreyer	043 732 1428		leon.dreyer@hpeafrica.co.za
HPE Africa	Cape Town	Branch Manager	Gary Pneumaticos	021 905 0581/2		Gary.P@hpeafrica.co.za
Hurricane Diesel	JHB		Wikus Wasserman	010 597 7843	071 859 5777	info@hurricanediesel.co.za
Industrial Engine Parts	JHB	Sales	Morne	011 868 5436	082 851 7514	sales@ieppower.co.za
Industrial Plant Solutions	Natal		David Botha		083 405 3494	sales@ipsglobal.net
Inmine Inala Mining Services	Witbank		Hennie Nelson		082 414 1393	sales@inmine.co.za
ITR Africa	Johannesburg	Sales Mgr - Nat	Carel Zwiegelaaar	011 614 0070	076 874 7296	carel.zwiegelaaar@itrafrica.com
ITR Africa	Johannesburg	Sales Mgr - U/C	Sean Smit	011 614 0070	072 271 6069	sean.smit@itrafrica.com
ITR Africa	Johannesburg	Prod.Dev Manager	Edwin Luttig	011 614 0070	076 570 0911	edwin.luttig@itrafrica.com
ITR Africa	Johannesburg	Sales Manager	Michael Sanderson	011 614 0070	062 311 3376	michael.sanderson@itrafrica.com
ITR Africa	Middelburg	Area Manager	Rudi Le Roux	013 590 5614	083 500 3763	rudi.leroux@itrafrica.com
ITR Africa	Kathu	Internal Sales	Mavrick van Niekerk	053 723 2245	084 647 7163	mavrick.vanniekerk@itrafrica.com
ITR Africa	Cape Town	Area Manager	Roy De Bruyn	021 905 7340	079 107 2112	roy.debruyn@itrafrica.com
ITR Africa	Port Elizabeth	Area Manager	Roche Bester	041 451 2222	082 476 9667	roche.bester@itrafrica.com
ITR Africa	East London	Area Manager	Shaun Smith	043 748 3541	079 948 2965	shaun.smith@itrafrica.com
ITR Africa	Pinetown	Area Manager	Quintin Pillay	031 941 1133	079 492 4519	quintin.pillay@itrafrica.com
ITR Africa	Bloemfontein	Area Manager	Jacques Billing	051 011 5620	082 928 1964	jacques.billing@itrafrica.com
ITR Africa	Windhoek	Director	Hanjo Schierschmidt	+264 83 331 5160	+264 81 155 5539	hanjo.schierschmidt@itrafrica.com
ITR Africa	Kitwe	Director	Andre Snyders	+260 96 351 3429	+260 96 351 3429	andre.snyders@itrafrica.com
JD Hoffman Earthmoving	Krugersdorp	Owner	Deviellers Hoffman		082 896 7950	diwie@mmweb.co.za
J&T Earthmoving Maintenance	Kempton Park		Alex Savage		081 895 5583	alex@earthmovingmaintenance.co.za
Jacobs Transport	Vereeniging	Sales	Gys Jacobs	010 200 9946	083 544 0275	gys@jacobstransport.co.za
JBS Plant Hire	Klerksdorp		Tonie van den Heever	018 469 1016/7	083 654 7809	jvvdh@lantic.net
Johnson Taylor	JHB	Sales Manager	Graham	011 614 5122		graham@johnsonsf.co.za
JW Plant Hire and Sales	Welkom	Sales	Leon	057 355 1119	083 253 6110	j.w.plant@telkomsa.net
Kaltire			Jacques Roux	012 548 9327	083 777 9497	jacques_roux@kaltire.com
Kappa Engineering		Managing Director	Gerrie Visagie	011 828 5506/8	082 575 2199	gerrie@kappaeng.co.za
Kappa Engineering Procurement		Rebuild Director	Nathaniel Hauptfleisch	011 828 5506/8	082 928 6312	nathaniel@kappaeng.co.za
KDH Hydraulics	JHB		Ricus	011 762 9001/2	071 678 3746	ricus@kdhhydraulics.co.za
Keegan Sansom			Keegan	039 975 3039	079 872 8948	keego17@gmail.com
Kemach	JHB			011 826 6710		sales@kemachjcb.co.za
Kemach	Middleburg			013 244 1839		sales@kemachjcb.co.za
Kemach	Pretoria			012 548 2956		sales@kemachjcb.co.za
Kemach	Bloemfontein			051 432 3978		sales@kemachjcb.co.za
Kemach	Durban			031 700 8278		sales@kemachjcb.co.za
Kemach	Richards Bay			035 751 2718		sales@kemachjcb.co.za
Kemach	CPT			021 949 7442		sales@kemachjcb.co.za



COMPANY	BRANCH	DESIGNATION	CONTACT	TEL NO	CELL	EMAIL
Kemach	Port Elizabeth			041 453 1819		sales@kemachjcb.co.za
Kemach	East London			043 732 1902		sales@kemachjcb.co.za
Kemach	George			044 878 0366		sales@kemachjcb.co.za
Kemach	Mithatha			047 531 1688		sales@kemachjcb.co.za
KHD Electrical			Delville Kuhn	011 392 4444		delville@khdiesel.co.za
Kholwa Equipment Solutions	JHB	Sales Director	Brian Stevenson	+27 68 250 7980		sales@armourplant.co.za
Kholwa Equipment Solutions	JHB	Sales	Rouxbann Baumann	+27 83 245 9330		sales@armourplant.co.za
Kholwa Equipment Solutions	JHB	Sales	Brendon Haydon	+27 72 757 2078		sales@armourplant.co.za
Komatsu	Cape Town	Sales	Frederick van Ryneveld	021 951 1251	082 317 2849	info@komatsu.co.za
Komatsu	Bloemfontein	Sales	Ian Banham	051 434 2221/2		ian.banham@komatsu.co.za
Komatsu	Gauteng	Sales	Graeme Armstrong	011 923 1000		Graeme.Armstrong@komatsu.co.za
Komatsu	Gauteng	Sales	Karen van der Walt	011 923 1000		Karen.vanderWalt@komatsu.co.za
Komatsu	Gauteng	Sales	Francois Griesel	011 923 1000		Francois.Griesel@komatsu.co.za
Komatsu	Kimberley	Sales	Jaco Van Heerden	053 832 2061		jaco.vanheerden@komatsu.co.za
Komatsu	Pinetown	Sales	Jacques van der Sandt	031 710 4950	082 888 0995	info@komatsu.co.za
Komatsu	Port Elizabeth	Sales	George Hyman	041 452 6555	082 882 9576	george.hyman@komatsu.co.za
Komatsu	White River	Sales	Fortune Mathiba	013 758 9900	083 675 1756	Fortune.mathiba@komatsu.co.za
Komatsu	Wolmeransstad	Sales	Piet du Toit	018 596 2244	083 271 3567	info@komatsu.co.za
Komax Spares	JHB		Jacques	011 664 8828	082 616 1654	jacques@jsaearth.co.za
Komax Spares	JHB		Gawie	011 664 8828	082 650 0505	
Komax Spares	JHB		Danie	011 664 8828	076 222 2708	
Kovobel SA	JHB	Sales	Mathew		083 973 1378	mathew@maspower.co.za
Kruiper Spares	Port Elizabeth	Sales	Gary	041 585 6455	083 321 0819	kruiper@global.co.za
Kruiper Spares	Port Elizabeth	Sales	Bill	041 585 6455	082 569 2740	kruiper@global.co.za
Kruiper Spares	Port Elizabeth	Sales	Philip	041 585 6455	083 235 3919	kruiper@global.co.za
Landboupart	Isando			011 966 9200		info@landboupart.com
Lee's Dozers	JHB		Lee Bray	071 687 9274		leeb@leesdozers.co.za
Leo Hydraulics				011 976 1941		admin1@leohydraulics.co.za
LIMCAT	Polokwane	Sales		015 004 0591		limcat@caterlim.co.za
LiuGong Machinery SA	JHB	Parts		011 979 3636		admin.za@burgersafrica.com
LNE Agri Earth (Pty) Ltd	JHB	Sales	Johann	0861 888 008	067 775 2430	J@LNE-AgriEarth.com
LNE Agri Earth (Pty) Ltd	JHB	Sales	Juan	0861 888 008	067 775 2430	C@LNE-AgriEarth.com
LNE Agri Earth (Pty) Ltd	JHB	General Manager	Guillaume	0861 888 008		G@LNE-AgriEarth.com
LNE Agri Earth (Pty) Ltd	JHB	Managing Director	Alani	0861 888 008	083 327 3237	LNE@LNE-AgriEarth.com
LPM Procurement	Germiston	Office	Linda Patricio	011 776 9160	083 637 7122	info@lpmprocurement.co.za
M.C Truck King	JHB	Sales Manager	Chezlin Abrahams	065 547 5131	065 547 5131	psales1mctp@gmail.com
MS Moils Africa						
Machinery Contractors	Brits		Wayne	012 250 3534		wayne@machinerycontractors.co.za
Mae Equipment	Witbank	Sales	Thomas Mittag		072 545 6223	info@mae-equipment.com
Mafika Engineering	JHB			011 334 1120		info@mafika.co.za
Manitou Southern Africa	JHB	Sales		010 601 3000		info.msa@manitou-group.com
Marange Plant & Mining	Bloemfontein		Maryke	053 841 0415	082 296 9810	maryke@marange.co.za
Marsay Equipment	Johannesburg		Tim Marsay	011 781 7410	083 654 4248	tim@marsayequip.co.za
Masslift Africa Mitsubishi Forklifts Dbn		Product Support/Spares	Brandon	031 700 8480	078 697 6161	Brandon@mlift.co.za
Mayfair Gearbox	JHB	Sales	Tyron Knott	011 493 8687	079 495 7224	tyron@mfgb.co.za
McKenzie Plant	Sales	Richmond/KZN	Stuart McKenzie	033 212 2181	082 558 7901	sjm@mckenzieplant.co.za
MHS Plant	JHB	Sales	Conrad	010 500 6193	082 781 9481	conrad@mhsplant.com
Midplant Services	JHB	Sales	Kellas	011 967 0055/60	083 675 1385	sales@midplant.com
Midplant Services	JHB	Sales	Jeff	011 967 0055/60	083 657 6123	sales@midplant.com
Midplant Services	JHB	Sales	Lee	011 967 0055/60	083 459 1695	sales@midplant.com
Milltech Engineering			Neil	011 421 7821	083 460 6510	neil@milltech-eng.com
Multi One Evolution	Benoni		Lofty Van Wyk		082 888 8899	info@multi-one.co.za
Mzantsi Transmissions	Johannesburg	Sales	Darryl Cilliers	011 868 5130	071 684 5784	info@gearboxes.me
N12 Truck Yard	Delmas – Mpumalanga				013 661 1039	sales@n12truckyard.co.za
Nduna Spares	Steelport		Natasha Reynders	013 230 3852		ndunasparers@gmail.com
New Beginnings Designs	JHB		Suken	011 791 4120	082 923 7987	suken@nbdesigns.co.za
NUCO Auctioneers	Dooringkloof East Pretoria		Jaco De Jager		011 206 8963	jaco@nucoauctioneers.com
One Stop Procurement	Benoni		Roger Melenas	011 420 1003	079 493 4486	roger@onesp.co.za
P&R Earthmoving	JHB	Sales	Scott	010 823 6385		scott@prearthmoving.com
P&R Earthmoving	JHB	Sales	Grant	010 823 8821		grant@prearthmoving.com
P&R Earthmoving	JHB	Sales	Ladis	010 823 7322		ladisla.l@pandearthmoving.com
P&R Earthmoving	JHB	Sales	Greg	010 823 6276		greg@prearthmoving.com
P&R Earthmoving	JHB	Sales	Kyle	010 823 6385		kyle@prearthmoving.com
P&R Earthmoving	JHB	Sales	Conrad	010 823 7972		conrad@pandearthmoving.com
P&R Earthmoving	JHB	Sales	Rikus			rikus@prearthmoving.com
Pacific Construction Equipment		Fairleads Benoni	Mark	011 453 1567	082 441 4587	markivan@mweb.co.za
Paramount Tracks	JHB	Sales		010 007 3258	082 894 5547	sales@paramounttracks.com
Paul Heslop Plant Services			Paul Heslop	086 111 5422	074 101 8239	paul@pixie.co.za
PEX Hydraulics	Cape Town	Sales	Nick Kotzee	021 556 3232		nick@pex.co.za
PEX Hydraulics	Johannesburg	Sales	Clinton MacDougall	011 882 8413	082 652 8897	clinton@pex.co.za
Pex Hydraulic Repairs	KZN	Sales	Priscilla Shanker	031 705 5050	084 429 8654	priscilla@pexkzn.co.za
Pilot Crushtec	JHB			011 842 5600		sales@pilotcrushtec.co.za
Plant Finder	PE		Shawn Michell	041 379 1717	082 568 4033	shawn@plantfinder.co.za
Powertrans Rebuild Centre	Isithebe		Ricky Naidoo	032 459 5700	082 555 4925	info@powertrans.co.za
Power Transmissions Technology Benoni			William	011 022 8570		info@pttech.co.za
Primeplant	JHB		Francois	011 979 4853	066 489 4892	sales2@primeplant.co.za
Primeplant	JHB		André	011 979 4853	066 489 4893	sales3@primeplant.co.za
Pro Link Hydraulics	Pretoria	Manager	Chris Botha	012 007 0278/205/206	082 327 8683	workshop@myprolink.co.za
Pro Link Hydraulics	Pretoria	Workshop Manager	Jacques Botha	012 007 0278/205/206	082 374 0582	workshop@myprolink.co.za
Pro Link Hydraulics	Pretoria	Counter	Riaan van Dyk	012 007 0278/207	082 419 0936	counter@myprolink.co.za
Pro Link Hydraulics	Pretoria	Seals Sales	Charles Valchar	012 007 0278/208	082 546 5662	seals@myprolink.co.za
Queensburgh Plant Sales	JHB	Used Sales	Wikus	011 964 1631	083 235 5665	qpsales@mweb.co.za
Queensburgh Plant Sales	JHB	New Sales	Albert	011 964 1467	082 652 4907	qpsales@mweb.co.za



Quip Finda	Port Alfred	Sales	Deryck		076 551 2637	ctcplantinterafrika@gmail.com
R21 Trucks	Centurion	Sales Manager	Mark Noble	011 206 8958	082 226 2220	mark@r21trucks.co.za
Ramm Parts	Witbank		Adriaan	076 127 2977		adriaan@rammparts.co.za
Ramm Parts	Witbank		Rodney	073 103 9582		
Ramm Parts	Witbank		Mark	072 530 7373		marc@rammparts.co.za
Randle Parts	KZN	Sales	Stan		083 653 4270	
Randle Parts	KZN	Sales	Justin		083 639 1982	justin.cope@randleparts.co.za
Randle Parts	KZN	Sales	Geoff		074 843 5298	
Rankin Training	DBN		Marcel	031 702 8447	082 909 9070	marcel@rankintraining.co.za
Reef Fuel Injection Services	JHB	Manager	Warren Hauser	011 873 2354		warren@reeffuel.co.za
Rent a Dozer	Marble Hall	Owner	Theodor Kleynhans	013 261 1746	083 459 5593	admin@rentadozer.co.za
Replacement Spares Unltd. /	RSU Pretoria	Sales	Paul Pelser	012 803 8714		paul@rsu.co.za
Revaro	Gauteng	Sales	WhatsApp no	083 898 5516		
Revaro	Gauteng	Sales	Nathan	+27 11 794 8271	060 402 5256	sales@revaro.co.za
Revaro	Gauteng	Sales	Morne	+27 11 794 8271	073 829 3078	sales@revaro.co.za
Revaro	Gauteng	Sales	Marcel	+27 11 794 8271	083 396 5816	sales@revaro.co.za
Revaro	Gauteng	Parts Sales	Daniel C	+27 11 794 8271	063 161 7854	sales@revaro.co.za
Rham Equipment	Olifontsfontein		Michael Combrink	011 203 7900		info@rham.co.za
Rhino Excavator Hammers	JHB		Paul	086 111 5422	074 101 8239	sales@rhinohammers.co.za
Rhino Excavator Hammers	JHB		Clive	(011)397 3327	071 670 8707	sales@rhinohammers.co.za
Ritchie Bros.	UAE		Alex Zachos		+971 506 424113	azachos@ritchiebros.com
Rocktech Earthmoving Wearparts	JHB	Manager	Derek Swift	011 793 6838	082 561 4682	derek@rocktech.co.za
Roger's Undercarriage	JHB			011 964 2695	083 974 5851	rogers.uc@mweb.co.za
Rondebult Construction Machines	Bronkhorstspuit			013 933 3643		sales@rondebult.co.za
Ruspet Exhausts	JHB		Russell	011 827 2824	083 448 7669	russell@ruspet.co.za
SS Mining Equipment	KZN	Director	John Syme		083 233 2844	john@ssminingequipment.com
Safety Grip	JHB	OTR S/Manager	Tewus Wesse	011 708 6660	083 639 2290	tewus@safetygrip.co.za
Scotty's Plant Hire	Pinetown		Ashley Scott	031 700 8000		scottys.plant@mweb.co.za
Scotty's Plant Hire	Pietermaritzburg		Ashley Scott	033 386 1653/14		scottyspmbsales@mweb.co.za
Sclanders Mech Natal		Sales	Ivan Kaisten	031 700 8083	083 653 3724	ivan@schlandermech.co.za
Sew's Plant & Civils	KZN		Sunash	031 507 2491	082 284 5082	info@sews.co.za
Shin Li Trading	Johannesburg		Office	011 396 1081		sales@shinlitrading.co.za
Shin Li Trading	Johannesburg		Chantell	011 396 1081	079 872 0465	sales2@shinlitrading.co.za
Shin Li Trading	Johannesburg		Riaan	011 396 1081	064 757 1129	sales4@shinlitrading.co.za
Shin Li Trading	Johannesburg		Dylan	011 396 1081	082 555 3058	sales5@shinlitrading.co.za
Shonakhona Logistics				032 943 3428	073 188 2004	
Sino Plant	Gauteng	Sales Manager	Mark Noble	011 206 8958	082 226 2220	mark@sinoplant.co.za
Spec-Cast Wear Parts	JHB	Sales Manager	Joe Venter	011 396 1713	074 134 5507	undercarriage@spec-cast.co.za
Spec-Cast Wear Parts	Middelburg	Sales	Herman Bezuidenhout	013 813 1413	072 187 6943	herman@spec-cast.co.za
Spec-Cast Wear Parts	Kathu, N/Cape	Sales	Ilse van Rooi	053 010 1304	067 414 8832	northerncape@spec-cast.co.za
Sintech	JHB	Sales	Jacob Nkabinde	011 823 2359		sales@sintech.co.za
SparePower	JHB	Parts Sales		011 845 4184	082 457 2804	terry@sparepower.co.za
STM Mining	JHB	Sales	Barney v Rooyen	011 894 6192	072 086 6163	barney@stmmining.co.za
Tambani Hydraulics	JHB		Lee Bray	071 687 9274		lee@tamhyd.co.za
The CAT Rental Store / Barloworld		Durban		(031)569 8500	082 909 9188	mnicolia@barloworld-equipment.com
The Seat Connection	JHB	Sales	Lydia/Graham	011 452 6802/6814		info@seatconnection.co.za
Think Generator	Gauteng	Sales	Mathew		083 973 1378	mathew@thinkgenerator.co.za
Think Generator	Gauteng	Sales	Andre		082 607 6077	andre@thinkgenerator.co.za
TJB Earthmoving Parts Buying	JHB		Brad	+27 71 154 3786		brad@tjbearthmoving.co.za
Talmac Machine Tools	JHB	Sales		+27 11 827 6539		info@talmac.co.za
Tommy's Auto Parts	Newcastle		Ahmed	034 375 8111	072 889 2581	exportintl@aol.com
Teeth Boyz	JHB	Sales	David		079 498 5417	
Teeth Boyz	JHB	Sales	Jason		062 055 7910	
Tractor and Grader Supplies	JHB	Sales	Jeannine	011 392 7533		jeannine@tags.co.za
Tractor and Grader Supplies	Witbank	Sales	Marcus	082 921 8634		marcusv@tags.co.za
Tractor and Grader Supplies	Witbank	Sales		013 492 2399		marcusv@tags.co.za
Tractor and Grader Supplies	Durban	Sales	Theo	082 553 7663		theo@tags.co.za
Tractor and Grader Supplies	Cape Town	Sales	Neal Simpson	082 606 7366		neal@tags.co.za
Tractor and Grader Supplies	Swaziland	Sales	Tiago	+268 2 518 4548		tiago@tags.co.za
Tractor and Grader Supplies	Namibia	Sales	Handre	+264 61 264710/1/2		handre@powerpartsnamibia.co.za
Transand			Fran cois Gerber	044 695 0105	082 454 0934	charlesjnr@transand.net
Trax Global	JHB		Steve	082 954 6253		steve@traxglobal.co.za
Trax Global	CPT		Eddie	082 697 0534		parts@traxglobal.co.za
Trax Global	CPT		Bev	083 505 8955		bev@traxglobal.co.za
Trysome cc	JHB	Supplies	Jaco	(011)823 5650		jaco.vandermerwe@trysome.cc
TTC Engineering & Hydraulics	JHB		Owner Tino	011 845 2837	082 822 4676	tino@ttcenghyd.co.za
TTC Engineering & Hydraulics	JHB		Admin Chanel	011 845 2837		admin@ttcenghyd.co.za
Turboworks	Centurion	Sales		012 653 7507	082 824 8037	sales@turboworks.co.za
Turbo Direct	Isando	Sales		011 392 5195		
Ultimate Exchange Components	JHB	Sales	Clifford van Ryneveld		078 854 7696	clifford@uecpty.co.za
Ultimate Exchange Components	JHB	Sales	Cois		064 591 2591	cois@uecpty.co.za
Unity	JHB	Sales		011 845 1630	082 457 0221	unitysalesandservices@gmail.com
VR Diesel & Turbo			Wayne	013 246 1003	083 310 9235	wayne@vrdiesel.net
Vendal Civils	JHB		Anton	011 801 4911/2	082 923 5397	vendels@mweb.co.za
Vendel Equipment Sales	JHB	Sales	Jaap	011 801 4911/2	082 892 1327	associated1@xnet.co.za
Vhavenda Bricks	Louis Trichardt	Sales	Pieter Lordan		082 577 5406	pieter@vhavendabricks.co.za
Vita Plant & Equipment	Brits	Machine Sales & Repairs	Costa Voyiatzakis	012 252 2915	082 521 7095	nicholas@vitaplant.co.za
Vortex transmissions	JHB		Johan	011 452 4430	082 333 1005	vortex@mweb.co.za
Vortex transmissions	JHB		Jan	011 452 4430	082 333 1004	vortex@mweb.co.za
WH Auctioneers	Midrand	Sales	Shannon	011 574 5700	084 520 5000	info@whauctions.com
WH Auctioneers	Midrand	Sales	Mathew	011 574 5700	084 252 5000	info@whauctions.com
WH Auctioneers	Midrand	Sales	Tim	011 574 5700	082 371 1069	info@whauctions.com
WAHA Equipment	Midrand	Sales	Will	011 574 5728	076 037 9516	will@waha.co.za
Wearpact	JHB	Sales	Linda	011 845 3234	083 453 3960	mwwrp@mweb.co.za
Weichai	JHB	Parts	Barry Fang		072 399 9817	bm@semrsa.co.za
WesTrac	AUS		Ron Lanzon	+61 418 927 625		Ronald.Lanzon@westrac.com.au
Wilson Plant	CPT	Sales	Miles Wilson	021 534 9536	082 928 9215	admin@wilsonplant.co.za
Yellow Metal SA	Pretoria	Sales	Pieter Botha	011 970 1299	082 805 8220	sales@ymsa.co.za
ZF Services South Africa	JHB	Sales: Service Parts	Warren Viviers	(011)457 0031	082 776 2759	warren.viviers@zf.com
ZF Services South Africa	JHB	Workshop:Off-road division	Christo Uys	(011)457 0091		christo.uys@zf.com
Zoomlion	JHB	Sales	Eric XI		072 712 0957	eric@aspower.co.za





# KICKASS COMPANY

# WEICHAI

PRODUCT SUPPORT AT ITS BEST



**Official Distributor for WEICHAI Parts**  
**New Machine Sales | Rental | Parts & Product Support**

14 Chilworth Rd, Founders Hill  
Lathabong 1609

Barry - 072 399 9817  
[bm@semrsa.co.za](mailto:bm@semrsa.co.za)

**OUR BRANDS & OUR PARTNERS**





# STILL STOCKING & SELLING JOHN DEERE PARTS



**BACKHOE LOADER**



**GRADER**



**WHEEL LOADER**



**BULLDOZER**



## YOUR LIFE LONG PARTNER IN SUPPORT

Contact your nearest  
Bell Customer Service Center or  
E-mail: [bellparts@bellequipment.com](mailto:bellparts@bellequipment.com)

**Strong Reliable Machines  
Strong Reliable Support**

# **BELL**