



HABITAT III





# HABITAT III

*Habitat: the set of environmental conditions in which an animal or a plant lives.*

Building on the exploration of art's relationship with its surroundings in our previous volumes, Habitat III invites you into the luminous and colorful world of a 17th-century Dutch historical house.

Here, the light dances through expansive windows, illuminating the vibrant hues and intricate details that define each room's unique character. This enchanting setting breathes life into our collection, creating a dialogue that resonates with both the architecture and the artworks it houses.

In this publication, we celebrate the harmony achieved when art objects find their place in a space rich with history and warmth. Each room tells its own story, from the bold, rich colours of the living area to the playful blue tiles of the kitchen, allowing our artworks to engage with their surroundings in a profoundly meaningful way.

The eclectic mix of textures, from richly woven fabrics to polished wood, complements the diverse materials of our collection, including intricate marble carvings, delicate terracottas, and finely crafted metalworks from Classic Greece and the Roman Empire to the 19th Century.

We are thrilled to share this exploration of a Dutch historical habitat, where art and architecture converse in a celebration of light, color, and warmth. We invite you to step into this harmonious environment and discover the profound interplay between our collection and this beautifully preserved abode.

Giulia and Giovanni













2. CRISTO MORTO, CIRCLE OF GUGLIELMO DELLA PORTA, ITALY  
MID 16TH CENTURY, GILT BRONZE 54 x 48 cm | 21 1/4 x 19 in















3. COLUMN FRAGMENT, ITALY, 18TH CENTURY, BRECCIA MEDICEA  
55 x d 25 cm | 21 3/4 x d 9 3/4 in











4. CUPID, ROMAN EMPIRE, 2ND/3RD CENTURY A.D., MARBLE 36 cm | 14 1/4 in

















6. ALEXANDER THE GREAT, ROME, 18TH CENTURY, MARBLE ON GIALLO ANTICO BASE  
42 cm | 16 1/2 in









7. COAT OF ARMS OF POPE SIXTUS IV DELLA ROVERE, 15TH CENTURY, MARBLE  
49.5 X 47.5 cm | 19 1/2 X 18 3/4 in



8. THEATRICAL MASK, ROMAN EMPIRE, 1ST CENTURY A.D., ROSSO ANTICO  
5.5 x 4.2 cm | 2 1/4 x 1 3/4 in the mask













9. MARS, FRANCE, 18TH CENTURY, GILT BRONZE, MARBLE BASE 35.6 cm | 14 in

10. PIETRA DURA PLAQUES WITH BIRDS, FLORENCE, 18TH CENTURY  
11.4 x 15.5 cm (4 1/2 x 6 in) with frame





















11. GROTESQUE MASK, ITALY, 15TH CENTURY, STONE 30 cm | 11 3/4 in

12. DIONYSOS, ROMAN EMPIRE, 3RD/4TH CENTURY A.D., BRONZE 14.5 cm | 5 3/4 in









13. VOTARY, CYPRUS, ARCHAIC PERIOD, CIRCA LATE 6TH-EARLY 5TH CENTURY B.C.  
LIMESTONE 13.5 cm | 5 ¼ in

12. DIONYSUS, ROMAN EMPIRE, 3RD/4TH CENTURY A.D., BRONZE

















15. PORTRAIT OF A GIRL, ROME, CIRCA 2ND/3RD CENTURY A.D., MARBLE  
18.4 cm | 7 1/4 in











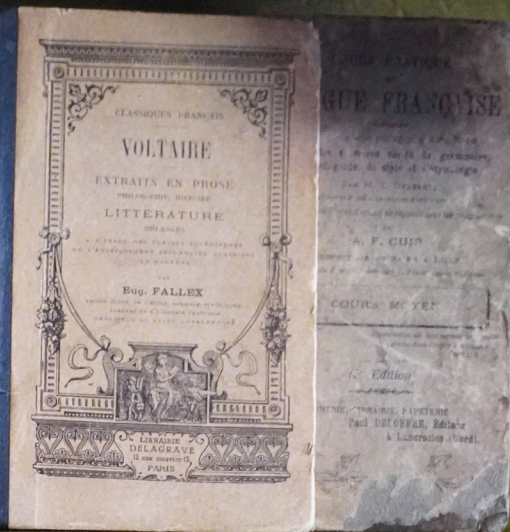














18. AXE HEADS, ASIA MINOR, BRONZE AGE, CIRCA 3RD MILLENNIUM B.C., POLISHED GREEN STONE  
9.5 cm (3 3/4 in); h 5.5 cm (2 1/4 in), h. 2.7 cm (1 1/4 in)











20. MEMENTO MORI INKWELL, ENGLAND, 19TH CENTURY  
SILVER, PIETRE DURE, IVORY 2 x 15 x 9 cm | 3/4 x 6 x 3 1/2 in











21. COAT OF ARMS OF THE MARTELLI FAMILY, FLORENCE, 15TH CENTURY, MARBLE  
42 cm | 16 1/2 in







22. APHRODITE, CLASSIC GREECE, 3RD-2ND CENTURY B.C., TERRACOTTA  
11.5 cm | 4 1/2 in







23. CAPITAL, FLORENCE, 14TH/15TH CENTURY, MARBLE 29 x 23 x 37 cm | 11 1/2 x 9 x 14 1/2







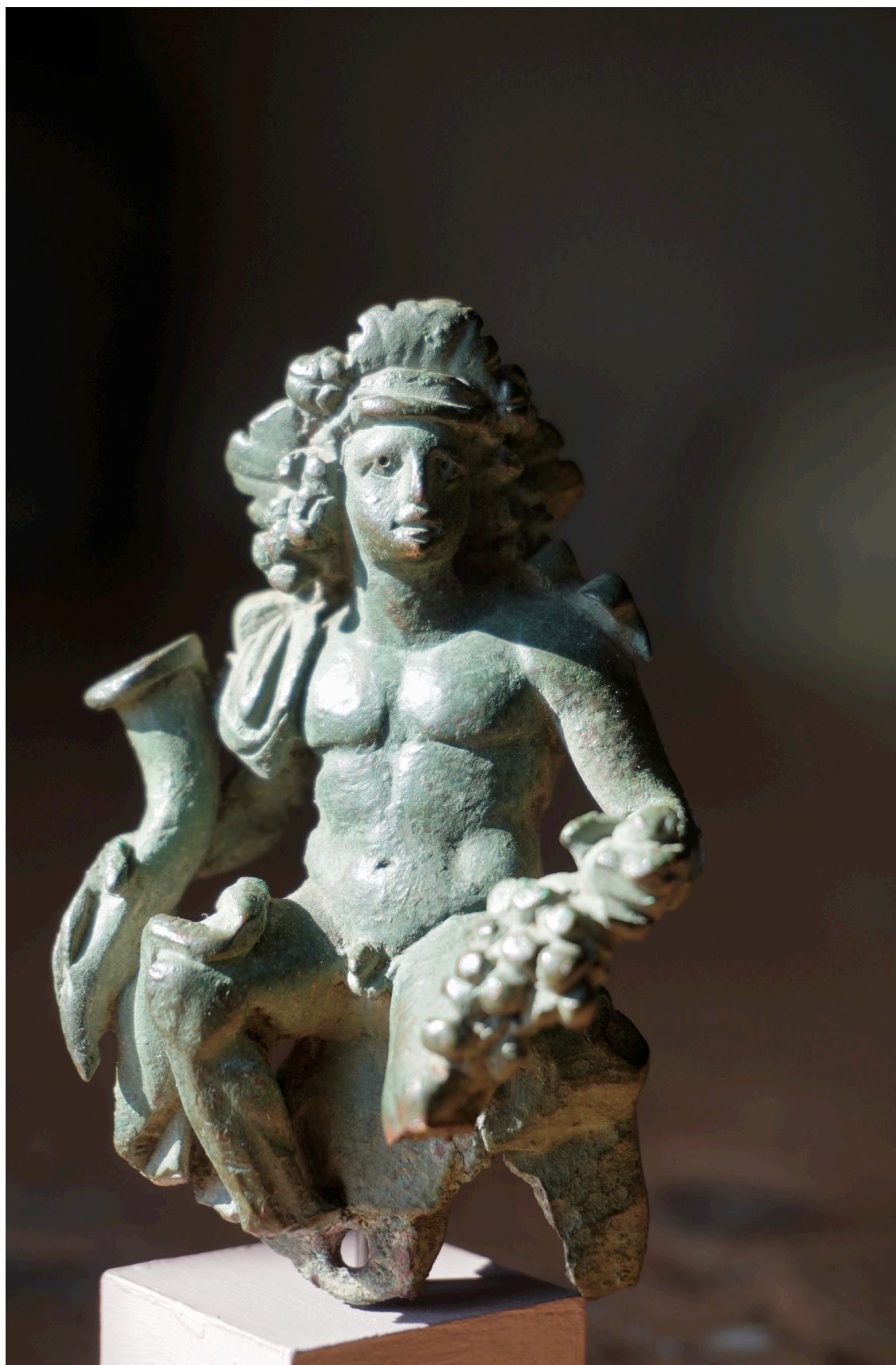
24. ALTAR FRAGMENT WITH URCEUS, ROMAN EMPIRE, 1ST/2ND CENTURY A.D., MARBLE  
56 cm | 22 1/4 in













25. DIONYSOS, ROMAN EMPIRE, 1ST CENTURY A.D., BRONZE 8.3 x 5.1 cm | 3 1/4 x 2 1/4 in  
26. ELEPHANT, ROMAN EMPIRE, 2ND CENTURY A.D., BRONZE 2.3 x 5 cm | 1 x 2 in  
27. ROMPING DOG, ROMAN EMPIRE, 1ST CENT. B.C.- 1ST CENT. A.D., BRONZE w 7 cm | 2 3/4 in





# LIST OF WORKS

## 1. **SERAPIS**

Roman Empire, circa 1st/2nd century A.D.  
Alabaster  
18.5 cm | 7 1/4 in

### *Provenance*

Judiciary sale Lombrai-Tucquamat- Truchetet  
Hotel Drouot, Paris, 23-02-2021, lot 173

## 2. **CRISTO MORTO**

Circle of Guglielmo Della Porta  
Italy, mid 16th century  
Gilt bronze  
54 x 48 cm | 21 1/4 x 19 in

### *Provenance*

M. Barbagli Private Collection, Milan  
Da Tos Belluco Antichità, Venice  
Private Collection, acquired in 1990

## 3. **COLUMN FRAGMENT**

Italy, 18th century  
Breccia medicea  
55 x d 25 cm | 21 3/4 x d 9 3/4 in

## 4. **CUPID**

Roman Empire, 2nd/3rd century A.D.  
Marble  
36 cm | 14 1/4 in

### *Provenance*

Nicolas Koutoulakis (1910-1996)

## 5. **GOD THE FATHER**

Italy, 17th Century  
Marble  
34 cm | 13 1/2

## 6. **ALEXANDER THE GREAT**

Rome, 18th century  
Marble on giallo antico base  
42 cm | 16 1/2 in

## 7. **COAT OF ARMS OF POPE SIXTUS IV DELLA ROVERE**

Italy, 15th century  
49.5 x 47.5 cm | 19 1/2 x 18 3/4 in

## 8. **THEATRICAL MASK**

Roman Eempire, 1st century A.S.  
Rosso antico  
5.5 x 4.2 cm | 2 1/4 x 1 3/4 in the mask

### *Provenance*

Penicuik House, Midlothian, acquired by either Sir John Clerk, 2nd Baronet of Penicuik (1676-1755) or his son Sir James Clerk, of Penicuik, 3rd Baronet of Penicuik (1709-1783)  
thence by descent

## 9. **MARS**

France, 18th century  
Gilt bronze on marble base  
35.6 cm | 14 in

## 10. **PIETRA DURA PLAQUES WITH BIRDS**

Florence, 18th century  
11.4 x 15.5 cm (4 1/2 x 6 in) with frame

## 11. **GROTESQUE MASK**

Italy, 15th Century  
Stone  
30 cm | 11 3/4 in

## 12. **DIONYSOS**

Roman Empire, 3rd/4th Century A.D.  
Bronze  
14.5 cm | 5 3/4 in

## 13. **VOTARY**

Cyprus, Archaic Period, circa late 6th-early 5th century B.C.  
Limestone  
13.5 cm | 5 ¼ in

### *Provenance*

Louis de Clercq (1836-1901), Paris  
Nicolas Koutoulakis (1910-1996), Paris and Geneva

### *Publications*

A. de Ridder, Collection de Clercq, *Catalogue Tome V: Les Antiquités Chyprïotes*, Paris, 1908, no. 71

**14. PORTRAIT OF A BOY**

Roman Empire, 1st/2nd century  
Marble  
58 cm | 22 3/4 in

*Provenance*

From the Estate of the late 6th Earl of  
Roseberry and his family  
Peter Morris and Derek Parker  
Sotheby Parke Bernet & Co., *Mentmore*  
*House Sale*, 18th May 1977, lot 202  
Presumably Rothschild collection

**15. PORTRAIT OF A GIRL**

Rome, circa 2nd/3rd century A.D.  
Marble  
18.4 cm | 7 1/4 in

*Provenance*

Sotheby's, London, May 23rd, 1988, no. 240  
Royal-Athena Galleries, New York, by 1988  
François Antonovich, Paris, by 1996  
Christie's, London, April 25th, 2001, no. 83

*Publications*

Royal-Athena Galleries, New York and  
Beverly Hills, *The Age of Cleopatra. The Art of*  
*Late Dynastic and Graeco-Roman Egypt* [Art  
of the Ancient World, vol. 5, part 2], October  
1988, no. 4, illus.  
François Antonovich, *Les métamorphoses*  
*divines d'Alexandre le Grand*, 1996, pp. 206  
and 395-396

**16. DANCING SATYR**

Roman Empire, 1st century B.C.  
Marble  
23 cm | 9 in

*Provenance*

Private Collection, Miami, USA

**17. COLUMNS**

Italy, 19th century  
Pietra paesina  
70 cm | 27 1/2 in

**18. AXE HEADS**

Asia minor, bronze age, circa 3rd millennium  
B.C.  
Polished green stone  
9.5 cm (3 3/4 in); h .5.5 cm (2 1/4 in), h. 2.7  
cm (1 1/4 in)

*Provenance*

Selim D'Ehrenhoff (1822-1890), Swedish  
Diplomat  
Sotheby's London, *Catalogue of a Collection of*  
*Antiquities, formed by the late S. D'Ehrenhoff,*  
*Swedish Minister at Constantinople*, February  
23rd, 1893, lot 46 and 49 (part)  
Private Collection, UK

**19. EROS**

Roman Empire, 2nd Century A.D.  
Bronze  
13 cm | 5 1/4 in

*Provenance*

Dr Leo Mildenberg (1913-2001) Private  
Collection, Zurich

**20. MEMENTO MORI INKWELL**

England, 19th century  
Silver, pietre dure, ivory  
2 x 15 x 9 cm | 3/4 x 6 x 3 1/2 in

**21. COAT OF ARMS OF THE MARTELLI  
FAMILY**

Florence, 15th century  
Marble  
42 cm | 16 1/2 in

**22. APHRODITE**

Classic Greece, 3rd-2nd century B.C.  
Terracotta  
11.5 cm | 4 1/2 in

*Provenance*

Private collection, London.  
Sotheby's London, 8 December 1994, lot 178  
Sotheby's London, 24 July 1967, lot 194



23. **CAPITAL**

Florence, 14th/15th century  
Marble  
29 x 23 x 37 cm | 11 1/2 x 9 x 14 1/2

24. **ALTAR FRAGMENT WITH URCEUS**

Roman Empire, 1st/2nd century A.D.  
Marble  
56 cm | 22 1/4 in

*Provenance*

Nicolas Koutoulakis (1910-1996), Paris and Geneva

25. **DIONYSOS**

Roman Empire, 1st century A.D.  
Bronze  
8.3 x 5.1 cm | 3 1/4 x 2 1/4 in

*Provenance*

English Private Collection  
Sotheby's, London 17-18 July 1985, Lot 204  
Royal Athena Gallery, New York, USA  
Acquired from above in 1986 by M.K., St. Clair Shores, Michigan

*Exhibitions*

Ohio State University  
Picker Art Gallery, Colgate University  
Fitchburg Art Museum from 1986 to 2016  
saalem, 1997, no. 98

26. **ELEPHANT**

Roman empire, 2nd century A.D.  
Bronze  
2.3 x 5 cm | 1 x 2 in

*Provenance*

Leo Mildenberg (1913-2001) collection, Zurich  
English Private Collection  
Private Collection, Florida, USA

*Publications*

A.S. Walker, *Animals in Ancient Art from the Leo Mildenberg Collection*, Part III, Mainz am Rhein, 1996, no. 173  
P.E. Mottahedeh, *Out of Noah's Ark, Animals in Ancient Art from the Leo Mildenberg Collection*, Bible Lands Museum, Jerusalem, 1997, no. 98

27. **ROMPING DOG**

Roman Empire, 1st cent. B.C.- 1st cent. A.D.  
Bronze  
width 7 cm | 2 3/4 in

*Provenance*

Leo Mildenberg (1913-2001) Private Collection, Zurich, prior to 1986  
American Private Collection, acquired in 1991

*Publications*

A.P. Kozloff, et al., *More Animals in Ancient Art from the Leo Mildenberg Collection*, Von Zabern, 1986, pp 30-32, no. II, 159

28. **LION FOUNTAIN HEAD**

Roman empire, 1st/2nd century A.D.  
Marble  
height with base 62 cm (24 1/2 in)

*Provenance*

Baron Plato von Ustinov (1840-1918) Private Collection, Oslo  
Private collection of a Norwegian gentleman, acquired at an auction in Oslo in 1919  
Bonhams, September 22nd, 1998, lot 485  
Private Collection, London



28. LION FOUNTAIN HEAD, ROMAN EMPIRE, 1ST/2ND CENTURY A.D, MARBLE  
height with base 62 cm (24 1/2 in)





PUBLISHED BY

CAVAGNIS LACERENZA FINE ART

+39 02 82398401

[www.cavagnislacerenza.art](http://www.cavagnislacerenza.art)  
[info@cavagnislacerenza.art](mailto:info@cavagnislacerenza.art)

MILANO, 2024

© CAVAGNIS LACERENZA FINE ART

*SPECIAL THANKS TO SYFRA VAN DE LOO*

ALL RIGHTS RESERVED. NO PART OF THIS  
PUBLICATION MAY BE REPRODUCED OR  
TRANSMITTED IN ANY FORM WITHOUT PRIOR  
AUTHORISATION BY THE PUBLISHER.



EXPLORE  
ONLINE  
EXHIBITION



CAVAGNIS  LACERENZA