

CONVEYANCE SOLUTIONS

ROAD-AWAY™ ROAD MILLING BELTING

Road construction requires quality belting designed to meet rigorous applications under demanding conditions. Work with the leader in milling belts and avoid downtime.



BELT SIZES

- Primary/Pick-Up Belts:
31.5" to 60" wide; 15' to 32' long
- Secondary/Discharge Belts:
24" to 54" wide; 48' to 58' long

BASE BELT SPECIFICATIONS

- 2-Ply 220# 5/32 x 3/32 RMA Grade 1
(EE 400/2 4 mm x 2 mm DIN Y)
- 3-Ply 240# 5/32 x 3/32 RMA Grade 1
(EE 500/3 4 mm x 2 mm DIN Y)
- 1-Ply 350# 5/32 x 3/32 RMA Grade 1
(1-Ply SW 600 4 mm x 2 mm DIN Y)

MOLDED CLEAT PATTERNS

- Y-Cleat
- V-Cleat
- U-Cleat

WHERE THE ROAD MEETS THE RUBBER

Road milling machines take the brunt of the workload during road construction projects. Belting is critical to the operation, and crews need belts that can stand up to extremely harsh conditions. That's why Mi Conveyance Solutions Road-Away™ milling belts are designed to provide the superior performance needed by road construction crews and companies.

IMPROVED FABRICATION, IMPROVED FUNCTIONALITY

Road-Away milling belts are fully molded for high capacity. Their high-strength, rip- and abrasion-resistant components transport materials as efficiently as possible. The fully molded cleat patterns are offered in three varieties: U, V, and Y — all ranging from 16" to 32" wide. Plus, Mi keeps large inventories of popular styles on hand for immediate shipment. That's just one more way you can **expect more with Motion.**

FEATURES AND BENEFITS

- Specially designed rubber compounds withstand impact from heavy, sharp materials
- Fully fabricated, single-piece belting and molded cleats eliminate dangers of cleat separation
- Advanced splice ensures ultimate strength and flexibility
- Tolerant of high speeds and small pulley diameters
- Higher capacity and better material leveling on carrying side
- Smoother, quieter operation on return side with stabilizing center profile (Y and V)
- Belting sizes for all manufacturers — including availability of metric cleat sizes, and the ability to have up to 1-1/4" high cleats

CONVEYANCE SOLUTIONS

ROAD-AWAY™ ROAD MILLING BELTING



MANUFACTURING AND FABRICATION FEATURES

Y-CLEAT PATTERN

- Most recent generation in road milling belt styles
- Taller design increases belt carrying capacity and prevents product rollback on inclines
- Features center Y profile and continuous, solid center stabilizing bar
- Allows belts to run quieter and smoother over idlers
- Aids belt to run straight on conveyor
- Cleat compounds made of high-strength rubber that provides tear and cutting resistance

BELT RUBBER COVERS

- Specially formulated compounds provide superior abrasion resistance
- High natural rubber content provides exceptional tear strength, as well as cut and gouge resistance
- Contains ozone inhibitors to withstand effects of prolonged exposure to hot/harsh conditions

FABRIC/CARCASS

- High-strength, low-stretch, all-polyester fabric
- Enhanced belt tracking and improved overall performance
- Special fabric weave enhances endless splice strength
- Flexible properties allow the belt to withstand high speeds and small pulley diameters

SINGLE PLY/STRAIGHT WARP

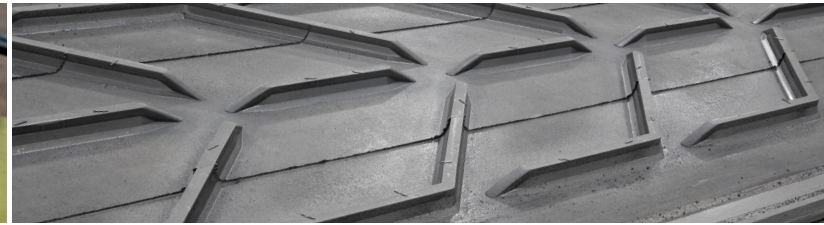
- Exceptionally strong and durable fabric
- Designed to provide superior resistance to gouging, tearing, and puncturing
- Better able to withstand the abuse of sharp and abrasive material on primary conveyor

ENDLESS SPLICE

- Provides superior tensile/breaking strength
- Proprietary design allows splice to better withstand harsh operating conditions
- Flexible properties allow the belt to withstand high speeds and small pulley diameters

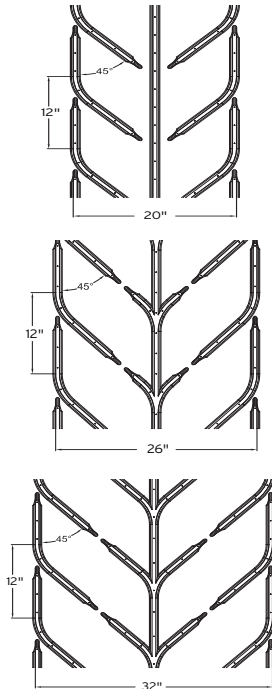
CONVEYANCE SOLUTIONS

ROAD-AWAY™ ROAD MILLING BELTING



MOLDED Y-CLEAT PATTERN

12" cleat centers — metric widths available



20" CLEAT PATTERN

- 30" minimum belt width
- 1-1/4" cleat height
- 1-1/4" cleat base width
- 1-1/4" high stabilizing center profile

26" CLEAT PATTERN

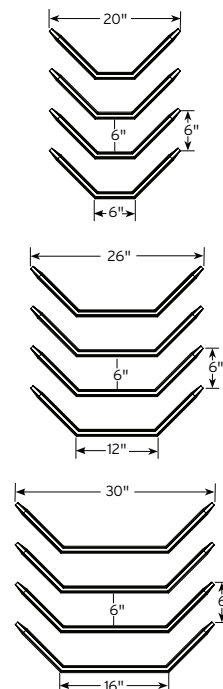
- 36" minimum belt width
- 1-1/4" cleat height
- 1-1/4" cleat base width
- 1-1/4" high stabilizing center profile

32" CLEAT PATTERN

- 42" minimum belt width
- 1-1/4" cleat height
- 1-1/4" cleat base width
- 1-1/4" high stabilizing center profile

MOLDED U-CLEAT PATTERN

6" cleat centers — metric widths available



20" CLEAT PATTERN

- 24" minimum belt width
- 1/2" or 1" cleat height
- 1-1/4" cleat base width
- Base belt: 2-ply 220# 5/32" x 3/32" for smaller pulleys

26" CLEAT PATTERN

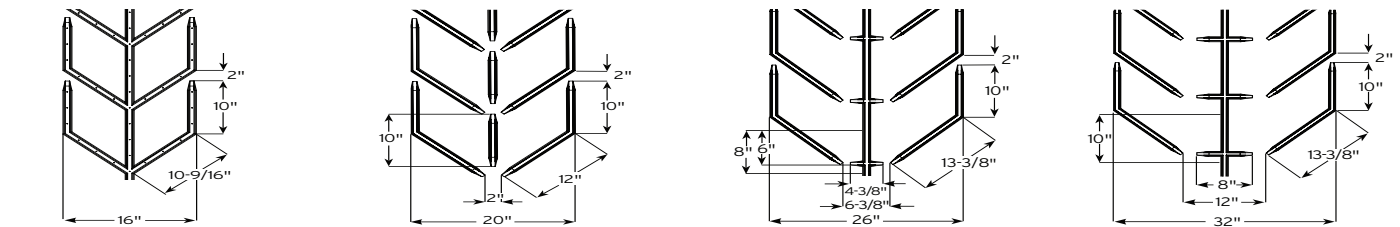
- 36" minimum belt width
- 1/2" or 1" cleat height
- 1-1/4" cleat base width

30" CLEAT PATTERN

- 42" minimum belt width
- 1/2" or 1" cleat height
- 1-1/4" cleat base width

MOLDED V-CLEAT PATTERN

12" cleat centers — metric widths available



16" CLEAT PATTERN

- 24" maximum belt width
- 1/2" cleat height
- 1-3/16" cleat base width
- 1/2" high continuous stabilizing center profile
- Base belt: 2-ply 220# 5/32" x 3/32" for smaller pulleys

20" CLEAT PATTERN

- 30" minimum belt width
- 1" cleat height
- 1-1/4" cleat base width
- 1" high stabilizing center profile

26" CLEAT PATTERN

- 36" minimum belt width
- 1" cleat height
- 1-1/4" cleat base width
- 1" high continuous stabilizing center profile

32" CLEAT PATTERN

- 42" minimum belt width
- 1" cleat height
- 1-1/4" cleat base width
- 1" high continuous stabilizing center profile

Partners. The Best Part of All.®

MOTION is a leading distributor of maintenance, repair, and operation replacement parts, and a premier provider of industrial technology solutions. With the goal of increasing customers' productivity, **Motion offers many valued-added services, including engineering, fabrication, repair, and Industry 4.0 solutions.**

PRODUCTS - Bearings, Electrical & Automation, Hydraulic Hose, Hydraulics, Industrial & Safety Products, Industrial Hose, Linear, Material Handling, Mechanical, Pneumatics, Process Pumps, Seals & Accessories, **and MORE!**



**Mi CONVEYANCE
SOLUTIONS®**

MiConveyanceSolutions.com