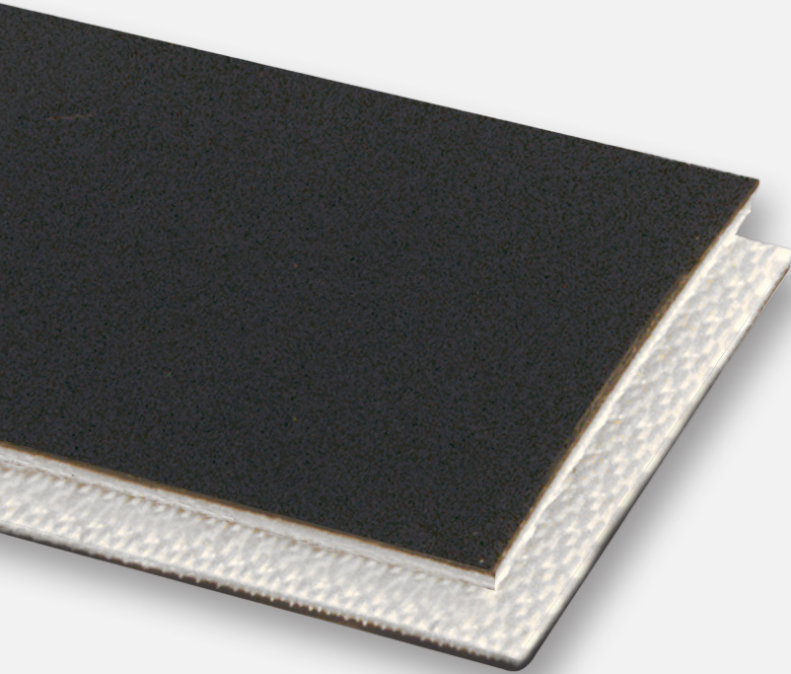


#4140

2-PLY 60# POLYESTER MONOFILAMENT BLACK PVC MATTE COVER X BARE CHECKOUT



FEATURES

Checkout and treadmill belt produced with a hard, premium PVC cover for better abrasion resistance. Matte finish reduces glare and minimizes belt marking. Construction features two plies of cross-rigid monofilament fabric.

APPLICATIONS

- Package Handling
- Horizontal

SPECIFICATIONS

Plies	2
Working Strength	60
Color	Black
Material	PVC
Carcass	Monofilament
Top Cover	Smooth
Bottom Cover	Bare
Thickness	0.078"
Weight PIW	0.04
Min. Pulley Diameter	1.5"
Max. Elongation	1-2%
Temperature Range	0°F to 180°F
Oil Resistant	No
Antistatic	No
Food Suitability	N/A

RECOMMENDED SPLICE

Clipper® Hook	UX-1SP
Alligator® Lacing	1
Ready Set™ Staple	RS62
Plastic Spiral	ASL90
Plastic Rivet	APF-100 B
Endless Splice	Finger, Skive