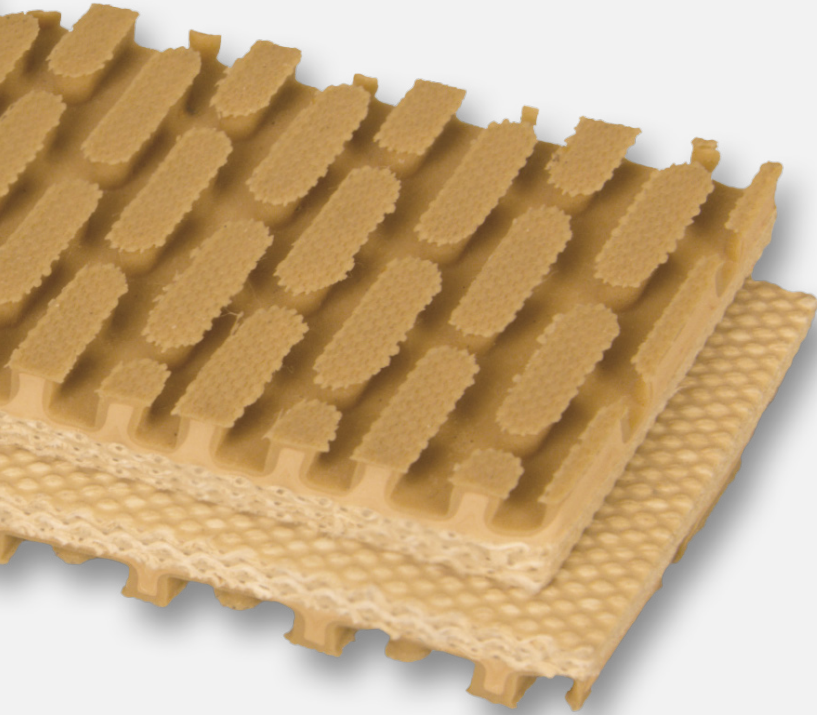


# #4315

3-PLY 90# COTTON/POLYESTER TAN NATURAL RUBBER STEEP-GRADE X FRICTION



## FEATURES

Soft natural rubber, non-marking oval-shaped profile nubs are an excellent choice for extreme inclines. The unique cover design prevents product slippage and provides cushioning for boxes, cartons and packaged goods.

## APPLICATIONS

- Incline
- Decline
- High Grip
- Non-Marking

## SPECIFICATIONS

|                      |                  |
|----------------------|------------------|
| Plies                | 3                |
| Working Strength     | 90               |
| Color                | Tan              |
| Material             | Natural SBR      |
| Carcass              | Cotton/Polyester |
| Top Cover            | Impression       |
| Bottom Cover         | Friction         |
| Thickness            | 0.315"           |
| Weight PIW           | 0.104            |
| Min. Pulley Diameter | 2.5"             |
| Max. Elongation      | 1-2%             |
| Temperature Range    | 0°F to 250°F     |
| Oil Resistant        | No               |
| Antistatic           | No               |
| Food Suitability     | N/A              |

## RECOMMENDED SPLICE

|                   |           |
|-------------------|-----------|
| Clipper® Hook     | U2        |
| Alligator® Lacing | 15        |
| Ready Set™ Staple | RS125     |
| Plastic Spiral    | ASL90     |
| Plastic Rivet     | APF-150 W |
| Endless Splice    | Bias Step |