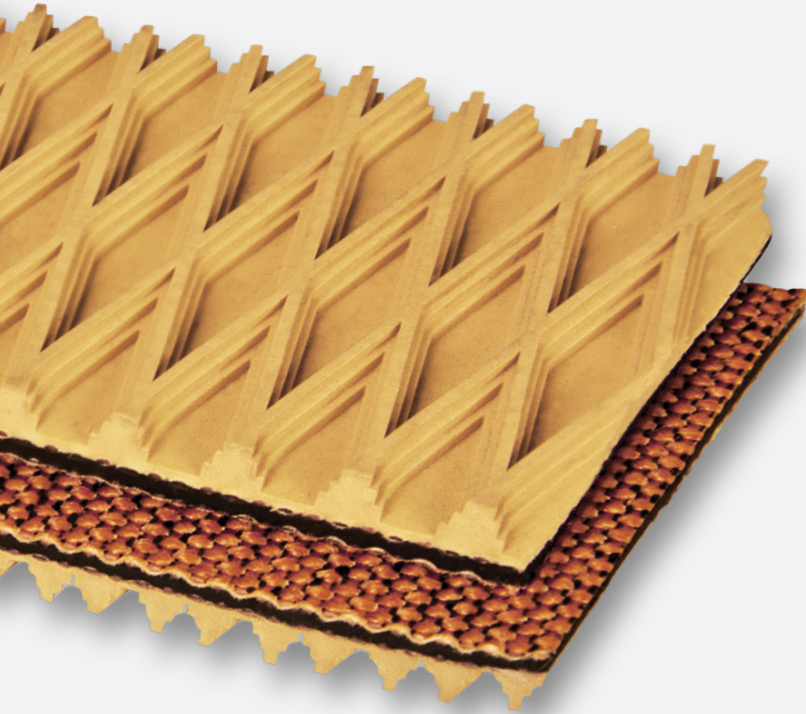


#4374

3-PLY 240# POLYESTER TAN SBR DIAMOND TOP X BARE



FEATURES

This diamond top belt is made for steep inclines for moving cases, parcels and bagged goods. Non-marking top cover.

APPLICATIONS

- Incline
- Decline
- High Grip
- Non-Marking

SPECIFICATIONS

Plies	3
Working Strength	240
Color	Tan
Material	SBR
Carcass	Polyester
Top Cover	Impression
Bottom Cover	Bare
Thickness	0.313"
Weight PIW	0.111
Min. Pulley Diameter	4"
Max. Elongation	1-2%
Temperature Range	0°F to 250°F
Oil Resistant	No
Antistatic	No
Food Suitability	N/A

RECOMMENDED SPLICE

Clipper® Hook	U2
Alligator® Lacing	15
Ready Set™ Staple	RS187
Plastic Spiral	ASL90
Plastic Rivet	APF-150 W
Endless Splice	Bias Step