

# CONVEYANCE SOLUTIONS

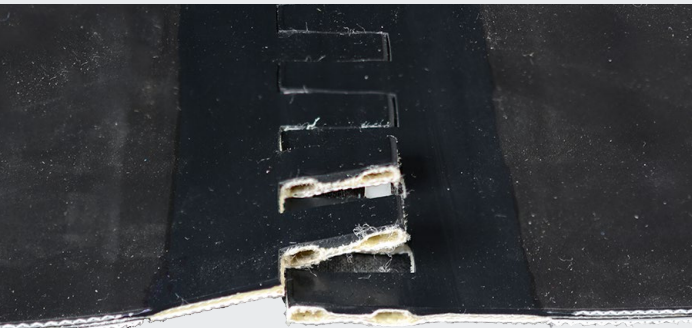
## SOFT SPLICE

Soft Splice saves you time and money when compared to other optical sorting machine options.



### FEATURES

- Splice is the same color as the belt
- Low profile with more durability than mechanical fasteners
- Provides a hard-to-detect splice
- Flat, nylon pin provides metallic-free splice
- Can easily run through a metal detector or around a magnet without issue
- Available in long lengths that accommodate a variety of belt widths



### RECYCLING & OPTICAL SORTERS

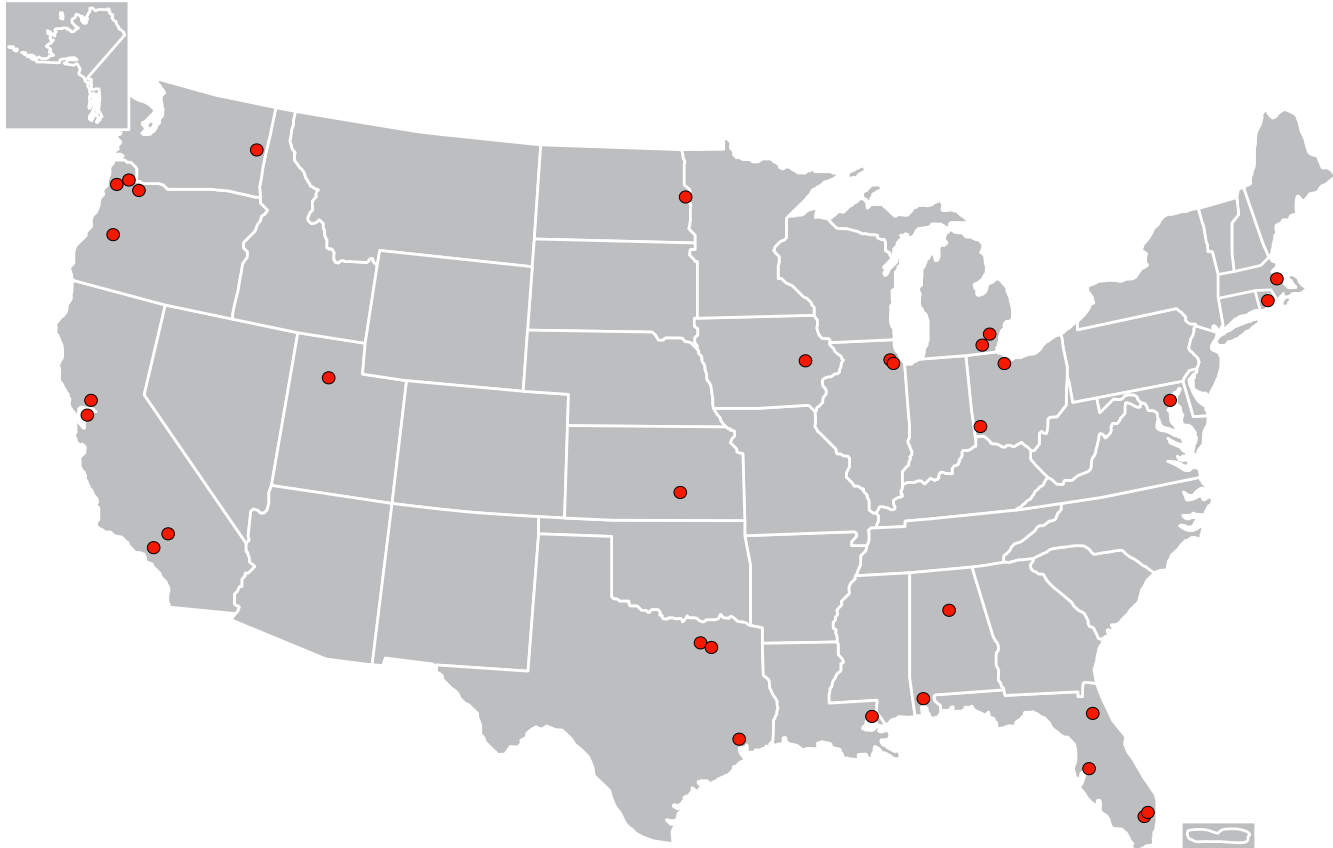
Optical sorters come with very wide conveyor belts designed to run at high speeds. These belts must be installed with an endless belt to ensure that the sorter can detect and accurately separate the material as it goes past the photo array.

### WIDE BELT INSTALLATION

Wider belts are hard to install and require special equipment and contractors to ensure a correct factory splice is installed in the belt. At best, this can be planned during downtime. If the belt must be glued into the machine, the cure time could exceed eight hours. Additionally, a mechanical (or metallic) fastener will be detected on every rotation of the conveyor, leading to product loss or improper levels of belt separation.

### HOW SOFT SPLICE SAVES YOU TIME & MONEY

Gone are the days of having to glue, align, and allow the splices to cure. Soft Splice allows for quick installation in the field, dramatically reducing downtime and costly delays. No need for a contractor or installation crew. Simply string on your new belt, align the ends of the Soft Splice, and install the pins. You can immediately tension and run the belt. That's just one more way you can **Expect More with Motion.**



## Mi CONVEYANCE SOLUTIONS GROUP – BELTING, HOSE, GASKETS, AND SEALS

### ALABAMA

**Birmingham Hose**  
110 38th St N  
Birmingham, AL 35222  
205-591-3102

**Mobile Hose/Gasket**  
1224 Calvert Business Park Dr  
Calvert, AL 36513  
251-829-4763

**CALIFORNIA**  
**Benicia Hose/Rubber**  
4315 Park Rd  
Benicia, CA 94510  
707-746-1600

**Los Angeles Hose**  
2041 Saybrook Ave  
Los Angeles, CA 90040  
323-832-9559

**San Francisco Hose/Rubber**  
1349 San Mateo Ave  
South San Francisco, CA 94080  
650-871-6566

**Victorville Belt**  
18499 Phantom W, Suite 4  
Victorville, CA 92394  
760-561-7270

### FLORIDA

**Jacksonville Belt**  
8180 Normandy Blvd  
Jacksonville, FL 32221  
904-781-3669

**Miami Belt**  
9000 N.W. 106th St Medley  
Miami, FL 31178  
305-887-9005

**Sunrise Hose**  
300 International Pkwy  
Sunrise, FL 33325  
954-845-1040

**Tampa Belt**  
5202 Shadowlawn Ave  
Tampa, FL 33610  
813-626-6125

**ILLINOIS**  
**Chicago Belt**  
10441 Beaudin Blvd, Suite 100  
Woodridge, IL 60517  
331-803-3290

**Chicago Hose**  
10441 Beaudin Blvd, Suite 500  
Woodridge, IL 60517  
630-985-9000

**IOWA**  
**Cedar Rapids Belt/Gasket**  
4805 Bowling St SW  
Cedar Rapids, IA 52404  
800-553-5455

### KANSAS

**Wichita Hose**  
1635 South Sabin  
Wichita, KS 67209  
316-942-7004

**LOUISIANA**  
**Slidell Belt**  
60461 Doss Dr  
Slidell, LA 70460  
985-718-3780

**MARYLAND**  
**Baltimore Hose/Belt/Gasket**  
8840 Kelso Dr  
Baltimore, MD 21221  
410-238-3127

**MASSACHUSETTS**  
**Boston Belt**  
66 Holton St  
Woburn, MA 01801  
617-269-7056

**MICHIGAN**  
**Monroe Hose/Gasket**  
425 East Front St  
Monroe, MI 48161  
734-241-6996

**Westland Belt**  
1500 Superior Pkwy  
Westland, MI 48185  
734-722-8900  
800-369-2358

### NORTH DAKOTA

**Fargo Belt**  
1400 47th St N  
Fargo, ND 58102  
701-492-0444

**OHIO**  
**Cincinnati Belt**  
9965 Farr Ct  
Cincinnati, OH 45246  
513-860-8400

**Perrysburg Hose/Rubber**  
30987 Oregon Rd  
Perrysburg, OH 43551  
419-666-9700

**OREGON**  
**Eugene Belt/Gasket**  
4685 Cloudburst Way  
Eugene, OR 97402  
541-799-3800

**Hillsboro/Seals**  
6410 NE Jacobson St  
Hillsboro, OR 97124  
800-423-6644

**Portland Belt**  
2621 NW Industrial St  
Portland, OR 97210  
503-467-4671

**Portland Belt/Hose**  
18383 NE Riverside Pkwy  
Portland, OR 97230  
503-285-0015

### RHODE ISLAND

**Warwick Belt**  
46 Warwick Industrial Dr  
Warwick, RI 02886  
401-732-8131

**TEXAS**  
**Dallas Belt**  
3100 State Highway 161, Suite 500  
Grand Prairie, TX 75050  
800-553-5455

**Garland Hose**  
2364 Merritt Dr, Suite D  
Garland, TX 75041  
972-278-1516

**Houston Hose**  
1915 Turning Basin, Suite 514  
Houston, TX 77029  
713-675-1853

**UTAH**  
**Salt Lake City Belt**  
2415 W Custer Rd  
Salt Lake City, UT 84104  
801-972-8427

**WASHINGTON**  
**Spokane Belt**  
1507 N Thierman Rd  
Spokane, WA 99212  
509-532-0875