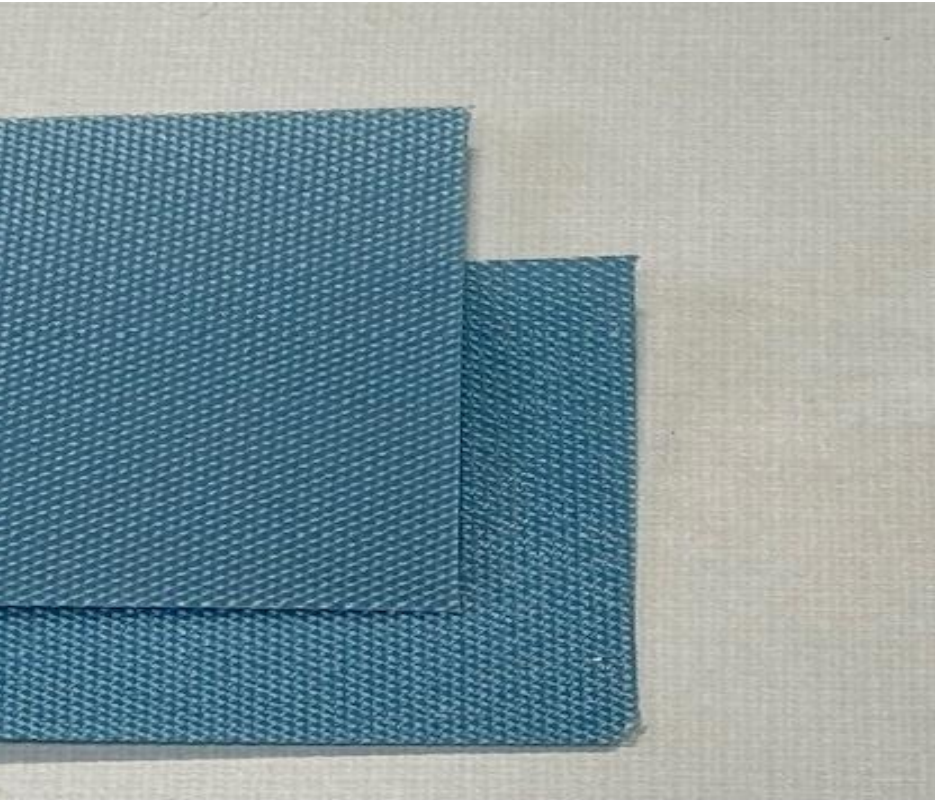


3845

1-PLY 30# POLYURETHANE BLUE BARE X BARE FDA



SPECIFICATIONS

Plies	1
Working Strength	30
Color	Blue
Material	Polyurethane
Carcass	Polyester
Top Cover	Bare
Bottom Cover	Bare
Thickness	0.02"
Weight PIW	0.01
Min. Pulley Diameter	0.25"
Elongation @ 100%	1%
Temperature Range	-22°F to 230°F
Fire Resistant	No
Anti-static	No
Food Suitability	Yes

FEATURES

This 1-ply polyurethane belt features a blue bare top cover and a blue bare bottom. Specifically designed for use in large distribution centers and food applications – skid bed, accumulator bed, roller bed and nose bar. This belt is FDA approved.

RECOMMENDED SPLICING

Clipper® Hook	N/A
Alligator® Lacing	N/A
Ready Set™ Staple	N/A
Plastic Spiral	APL70
Plastic Rivet	N/A
Endless Splice	Finger

APPLICATIONS

- Package Handling
- Food application
- Roller Bed
- Accumulator Bed
- Skid Bed