

## Series QR1



 **FLUID POWER  
SOLUTIONS**

AVENTICS™

AVENTICS Series QR1 Fittings

  
**EMERSON™**

## Series QR1

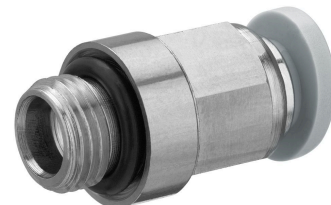
AVENTICS Series QR1 push-in connectors with easy, secure mounting are available in many versions: for tubing diameters from 3 to 16 mm, as well as in plastic, metal, and stainless steel variants. QR1 Series offers a cylindric thread that allows repeated connection and release without problems (Quick Release) and captive O-ring guarantees an optimal sealing. Our QR program offers the right solution for every application and industry.

- $Q_n = 60 \text{ l/min} \dots 875 \text{ l/min}$
- Due to product optimisation, the delivered article may currently deviate from the dimensions shown.



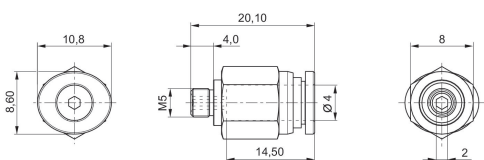
**QR1-S-RPN standard series**

Straight fitting  
External thread  
push-in fitting

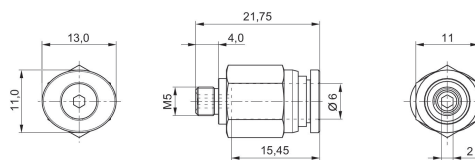


G	Ø D	Delivery unit [piece]	Part No.
M5	Ø 4	10	2121004050
M5	Ø 6	10	2121006050

**2121004050**



**2121006050**



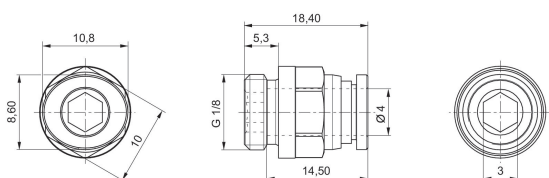
**QR1-S-RPN standard series**

Straight fitting  
External thread  
push-in fitting

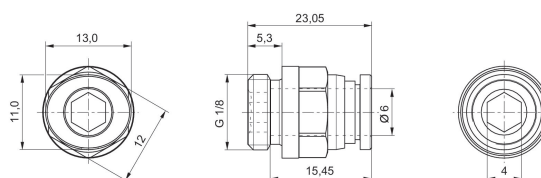


G	Ø D	Delivery unit [piece]	Part No.
G 1/8	Ø 4	10	2121004180
G 1/8	Ø 6	10	2121006180
G 1/4	Ø 4	10	2121004140
G 1/4	Ø 6	10	2121006140
G 1/4	Ø 8	10	2121008140
G 3/8	Ø 6	10	R412005000
G 3/8	Ø 8	10	2121008380
G 3/8	Ø 10	10	2121010380
G 1/2	Ø 8	10	R412005001
G 1/2	Ø 10	10	2121010120
G 1/2	Ø 12	10	2121012120

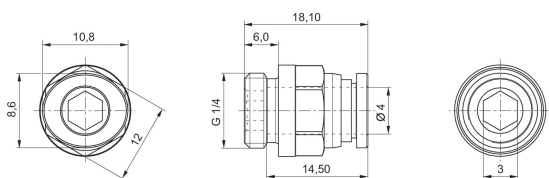
**2121004180**



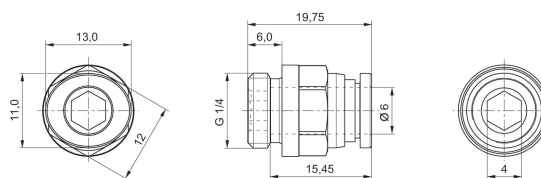
**2121006180**



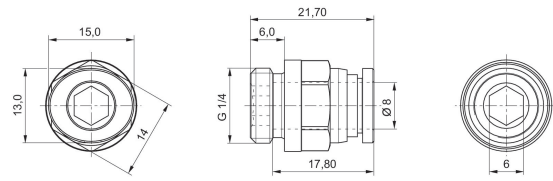
**2121004140**



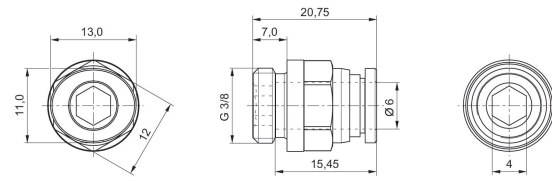
**2121006140**



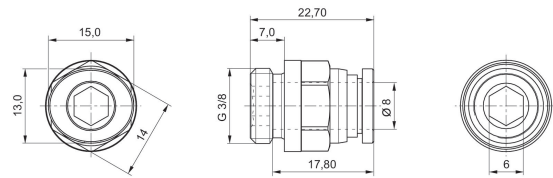
**2121008140**



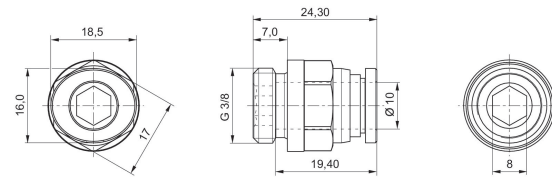
**R412005000**



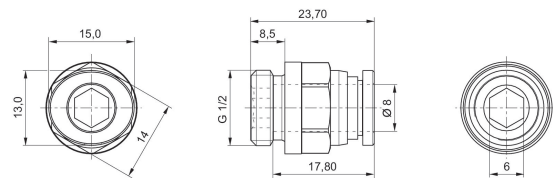
**2121008380**



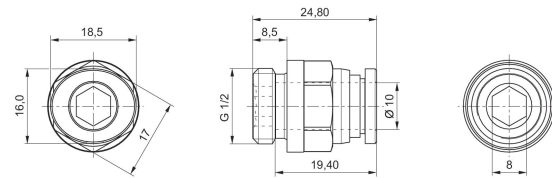
**2121010380**



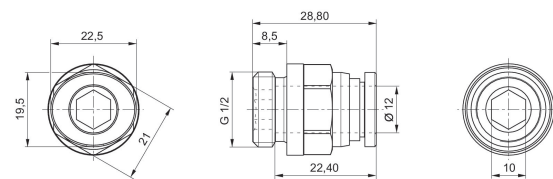
**R412005001**



**2121010120**



**2121012120**



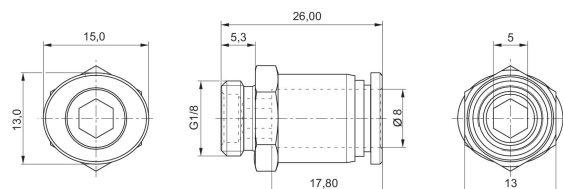
**QR1-S-RPN standard series**

Straight fitting  
External thread  
push-in fitting

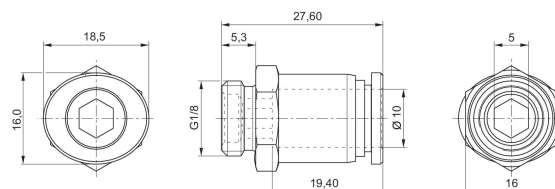


G	Ø D	Delivery unit [piece]	Part No.
G 1/8	Ø 8	10	2121008180
G 1/8	Ø 10	10	R412005002
G 1/8	Ø 12	10	R412005003
G 1/4	Ø 10	10	2121010140
G 1/4	Ø 12	10	2121012140
G 3/8	Ø 12	10	2121012380
G 3/8	Ø 14	10	2121014380
G 3/8	Ø16	10	R412005005
G 1/2	Ø 14	10	2121014120
G 1/2	Ø16	10	R412005006

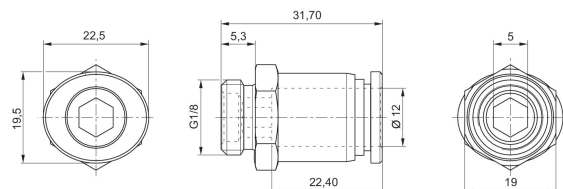
**2121008180**



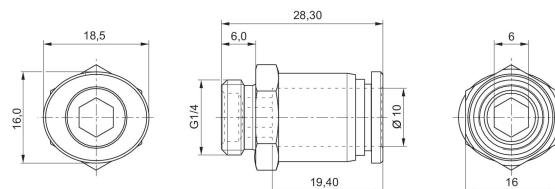
**R412005002**



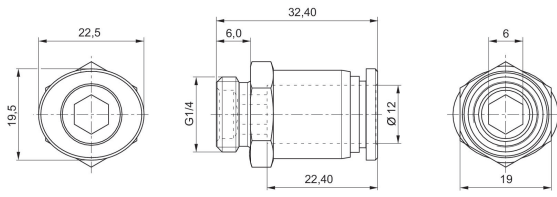
**R412005003**



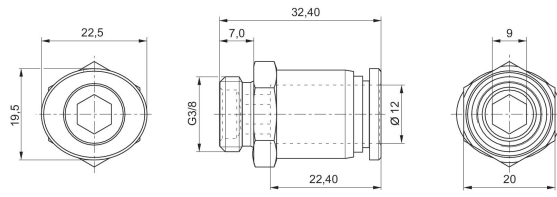
**2121010140**



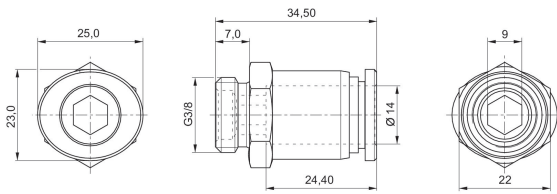
2121012140



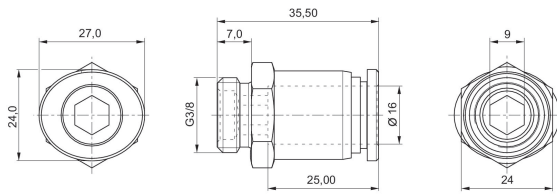
2121012380



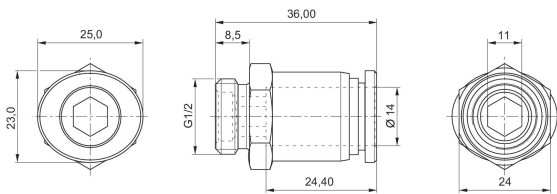
2121014380



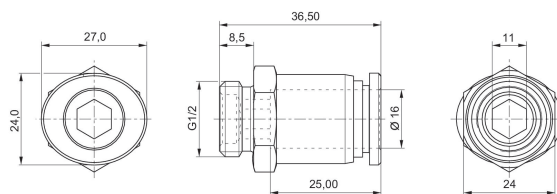
R412005005



2121014120



R412005006



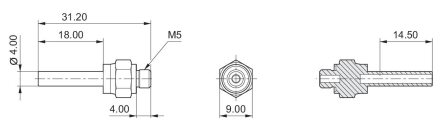
**QR1-S-RAS standard series**

Push-in connector  
External thread  
pin bushing

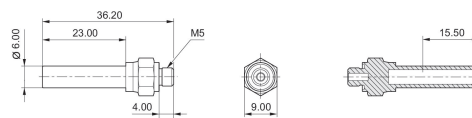


G	Ø D	Delivery unit [piece]	Part No.
M5	Ø 4	10	2121604050
M5	Ø 6	10	R412005068
G 1/8	Ø 4	10	2121604180
G 1/8	Ø 6	10	2121606180
G 1/8	Ø 8	10	R412005071
G 1/4	Ø 6	10	2121606140
G 1/4	Ø 8	10	2121608140
G 1/4	Ø 10	10	R412005072
G 1/4	Ø 12	10	R412005073
G 3/8	Ø 10	10	2121610380
G 3/8	Ø 12	10	R412005074
G 1/2	Ø 10	10	2121610120
G 1/2	Ø 12	10	2121612120
G 1/2	Ø 14	5	R412005076
G 1/2	Ø 16	5	R412005078

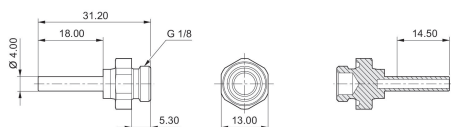
**2121604050**



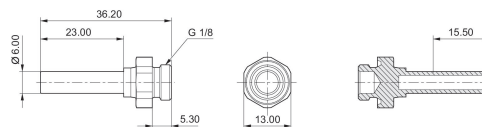
**R412005068**



**2121604180**

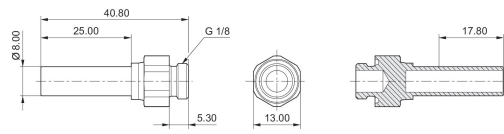


**2121606180**

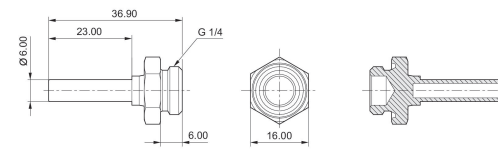




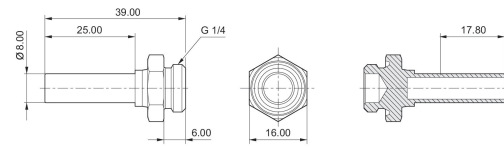
**R412005071**



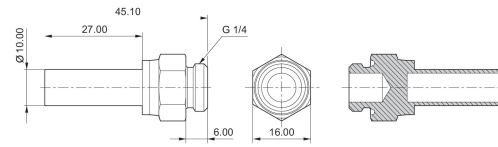
**2121606140**



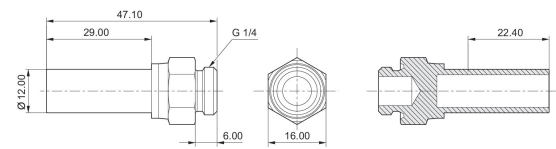
**2121608140**



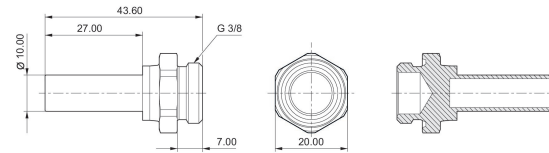
**R412005072**



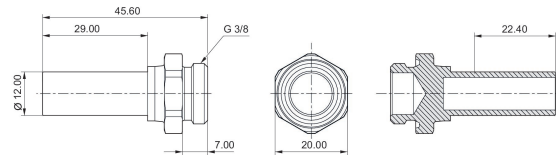
**R412005073**



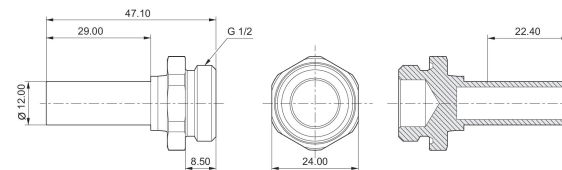
**2121610380**



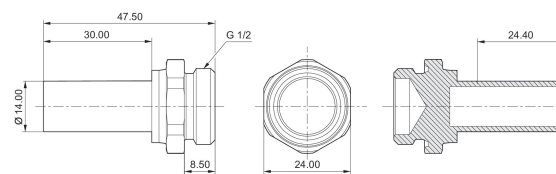
**R412005074, 2121610120**



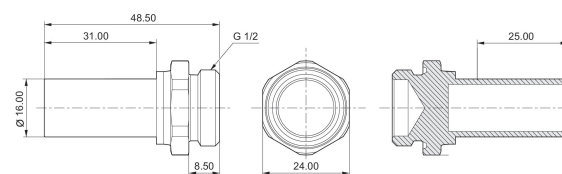
**2121612120**



**R412005076**

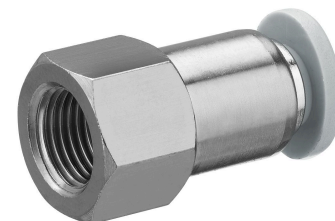


**R412005078**



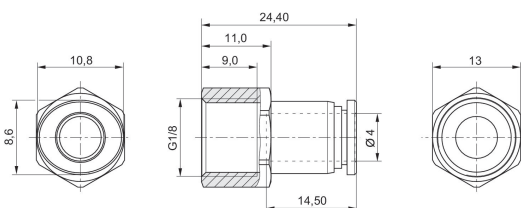
**QR1-S-RAI standard series**

Straight female stud fitting  
Internal thread  
push-in fitting

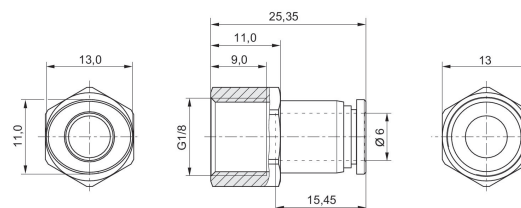


G	Ø D	Delivery unit [piece]	Part No.
G 1/8	Ø 4	10	2121904180
G 1/8	Ø 6	10	2121906180
G 1/8	Ø 8	10	2121908180
G 1/4	Ø 4	10	R412005085
G 1/4	Ø 6	10	2121906140
G 1/4	Ø 8	10	2121908140
G 1/4	Ø 10	10	R412005089
G 1/4	Ø 12	10	R412005091
G 3/8	Ø 6	10	R412005086
G 3/8	Ø 8	10	R412005087
G 3/8	Ø 10	10	2121910380
G 3/8	Ø 12	10	2121912380
G 1/2	Ø 10	10	R412005090
G 1/2	Ø 12	10	2121912120

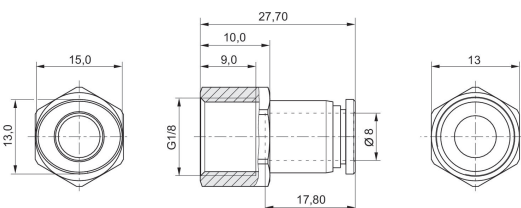
**2121904180**



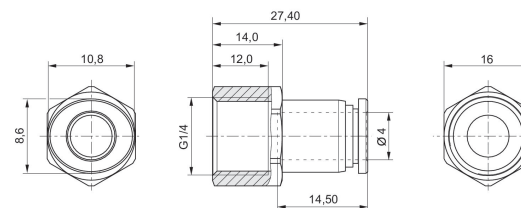
**2121906180**



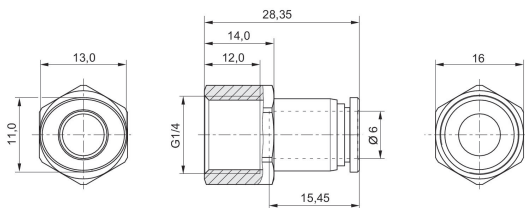
**2121908180**



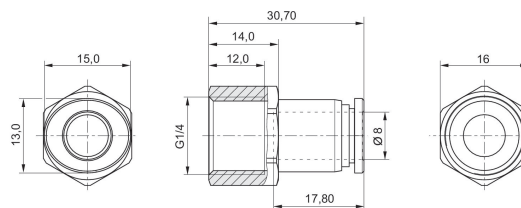
**R412005085**



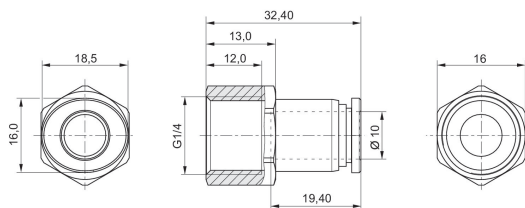
2121906140



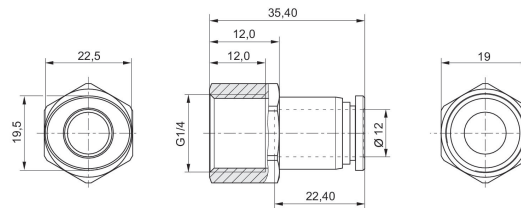
2121908140



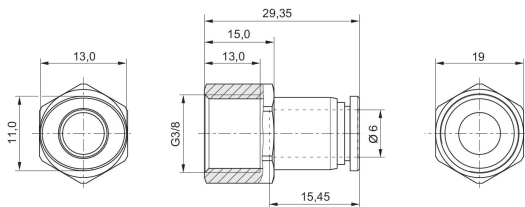
R412005089



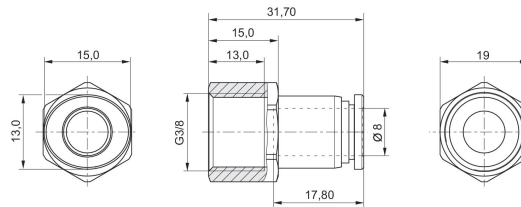
R412005091



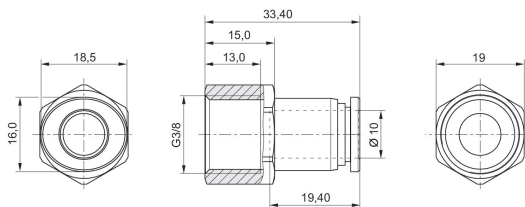
R412005086



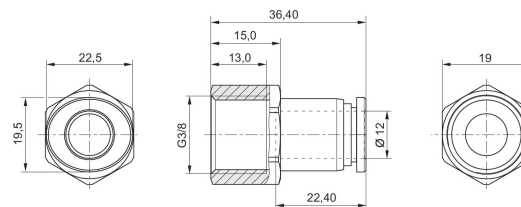
R412005087



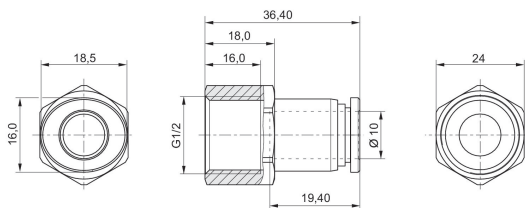
2121910380



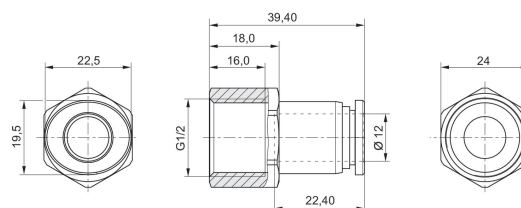
2121912380



R412005090

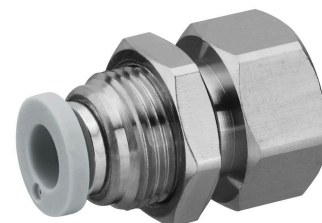


2121912120



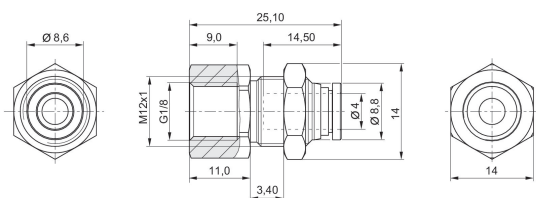
**QR1-S-RSI standard series**

Bulkhead connector  
Internal thread  
push-in fitting

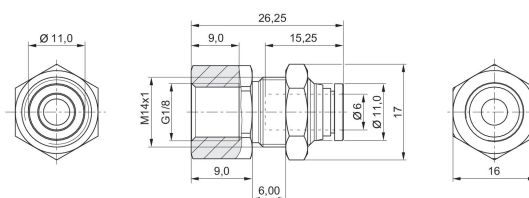


G	Ø D	Delivery unit [piece]	Part No.
G 1/8	Ø 4	10	2122604180
G 1/8	Ø 6	10	2122606180
G 1/8	Ø 8	10	R412005232
G 1/4	Ø 6	10	2122606140
G 1/4	Ø 8	10	2122608140
G 1/4	Ø 10	10	R412005233
G 3/8	Ø 8	10	R412005231
G 3/8	Ø 10	10	2122610380
G 3/8	Ø 12	10	R412005235
G 1/2	Ø 12	10	2122612120

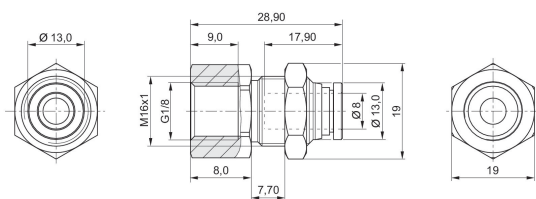
**2122604180**



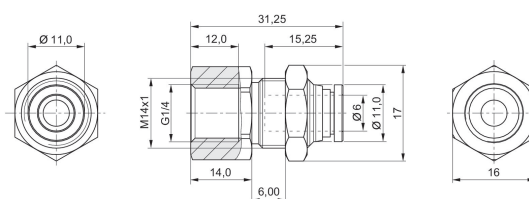
**2122606180**



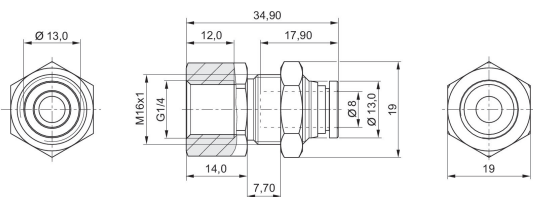
**R412005232**



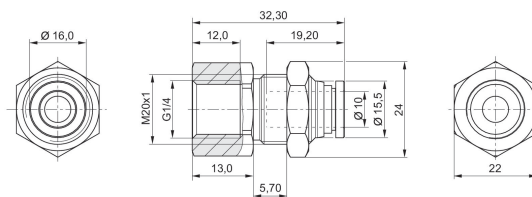
**2122606140**



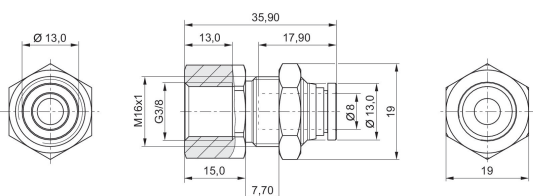
2122608140



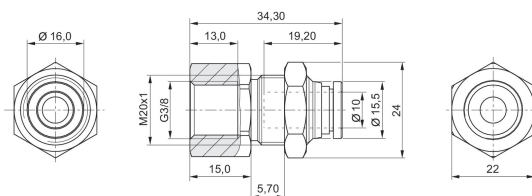
R412005233



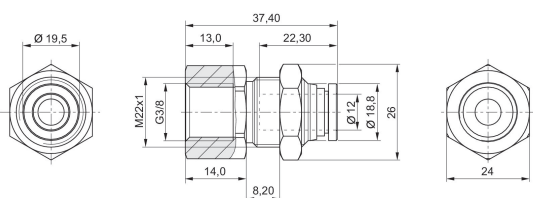
R412005231



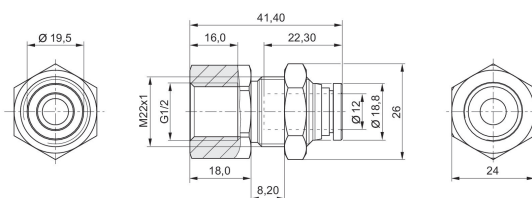
2122610380



R412005235



2122612120



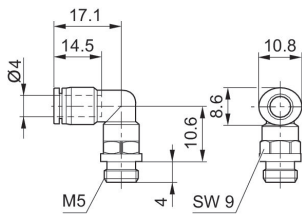
**QR1-S-RVT standard series**

Elbow fitting  
External thread  
push-in fitting

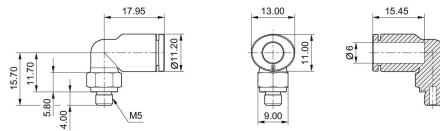


G	Ø D	Delivery unit [piece]	Part No.
M5	Ø 4	10	2122004050
M5	Ø 6	10	2122006050

**2122004050**



**2122006050**



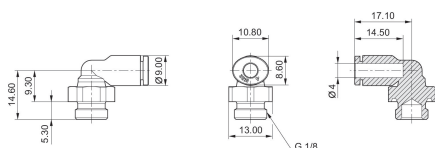
**QR1-S-RVT standard series**

Elbow fitting  
External thread  
push-in fitting

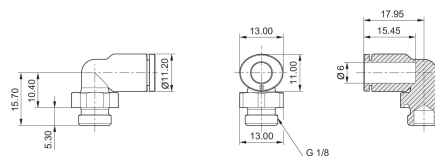


G	Ø D	Delivery unit [piece]	Part No.
G 1/8	Ø 4	10	2122004180
G 1/8	Ø 6	10	2122006180
G 1/8	Ø 8	10	2122008180
G 1/8	Ø 10	10	R412005094
G 1/8	Ø 12	10	R412005095
G 1/4	Ø 4	10	2122004140
G 1/4	Ø 6	10	2122006140
G 1/4	Ø 8	10	2122008140
G 1/4	Ø 10	10	2122010140
G 1/4	Ø 12	10	2122012140
G 3/8	Ø 6	10	R412005092
G 3/8	Ø 8	10	2122008380
G 3/8	Ø 10	10	2122010380
G 3/8	Ø 12	10	2122012380
G 3/8	Ø 14	5	2122014380
G 3/8	Ø 16	5	R412005097
G 1/2	Ø 8	10	R412005093
G 1/2	Ø 10	10	2122010120
G 1/2	Ø 12	10	2122012120
G 1/2	Ø 14	5	2122014120
G 1/2	Ø 16	5	R412005098

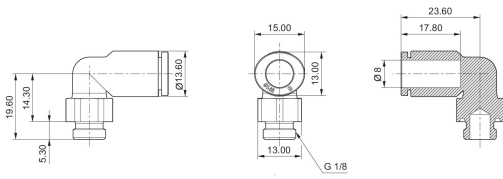
**2122004180**



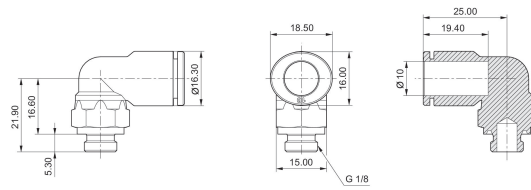
**2122006180**



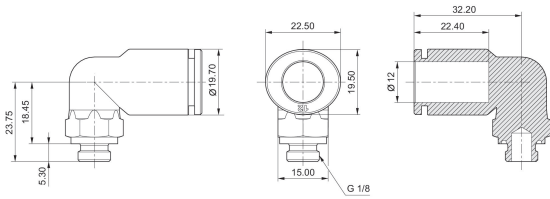
2122008180



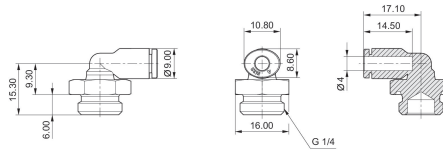
R412005094



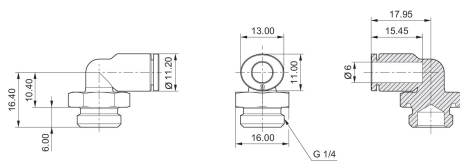
R412005095



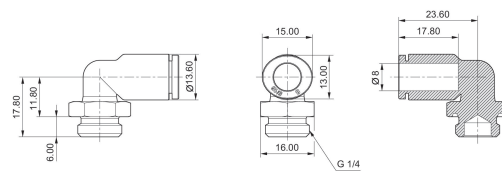
2122004140



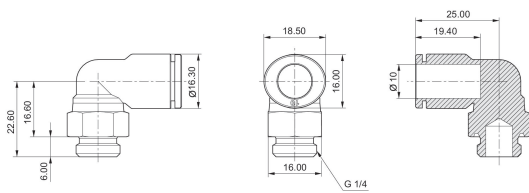
2122006140



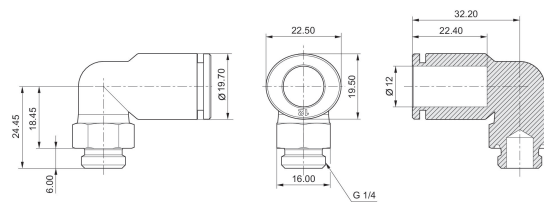
2122008140



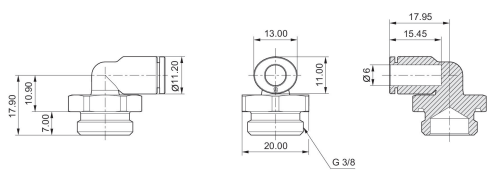
2122010140



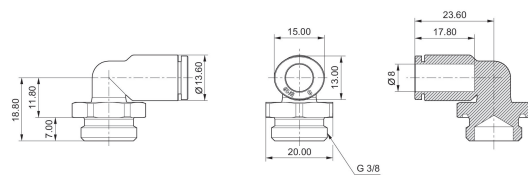
2122012140



R412005092

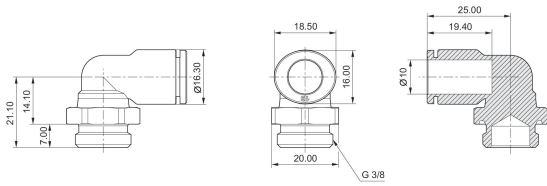


2122008380

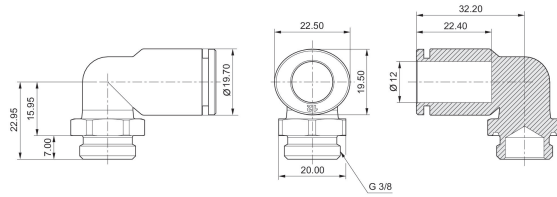




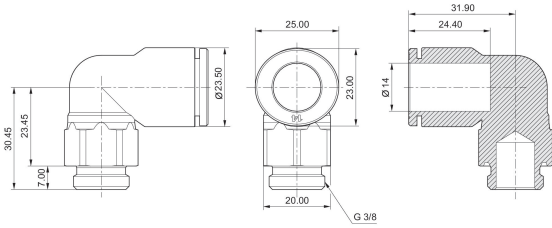
2122010380



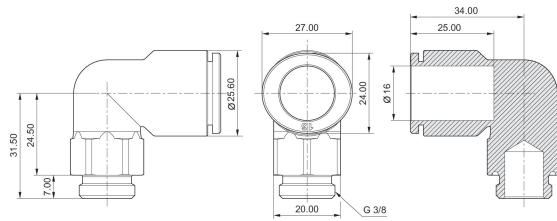
2122012380



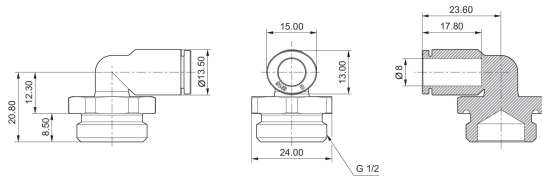
2122014380



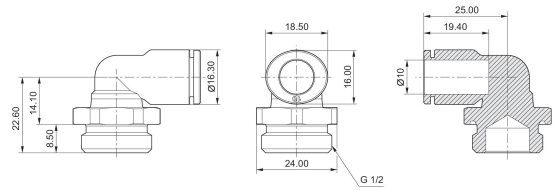
R412005097



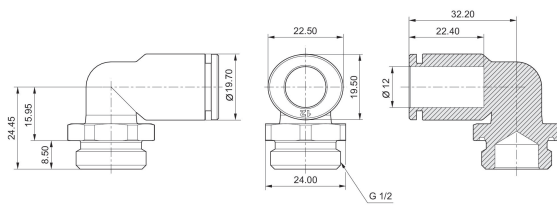
R412005093



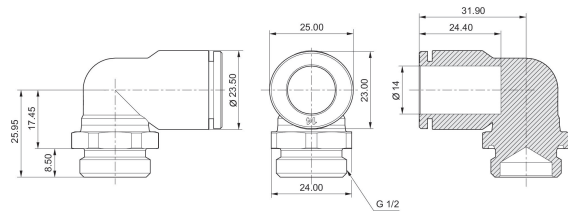
2122010120



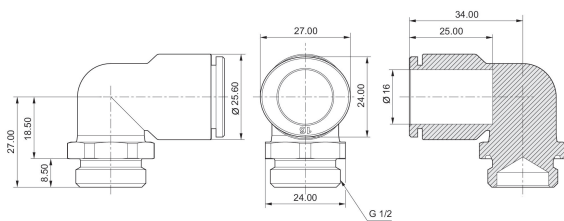
2122012120



2122014120

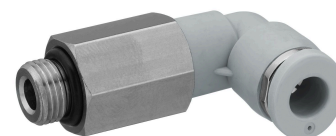


R412005098



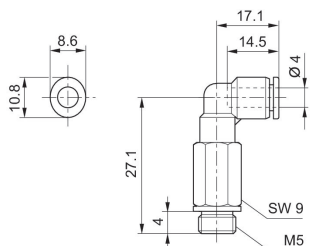
**QR1-S-RVL standard series**

Long elbow fitting  
External thread  
push-in fitting

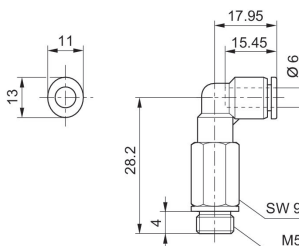


G	Ø D	Delivery unit [piece]	Part No.
M5	Ø 4	10	2122104050
M5	Ø 6	10	R412005099
G 1/8	Ø 4	10	2122104180
G 1/8	Ø 6	10	2122106180
G 1/8	Ø 8	10	2122108180
G 1/4	Ø 4	10	2122104140
G 1/4	Ø 6	10	2122106140
G 1/4	Ø 8	10	2122108140
G 1/4	Ø 10	10	2122110140
G 1/4	Ø 12	10	R412005103
G 3/8	Ø 8	10	2122108380
G 3/8	Ø 10	10	2122110380
G 3/8	Ø 12	10	R412005104
G 1/2	Ø 12	10	R412005105

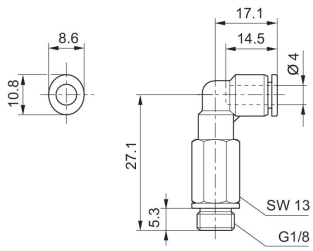
**2122104050**



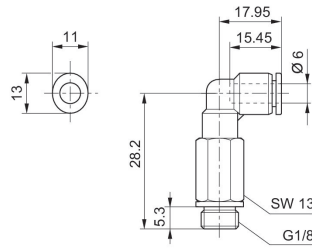
**R412005099**



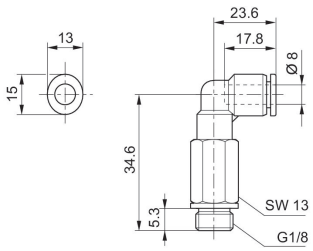
2122104180



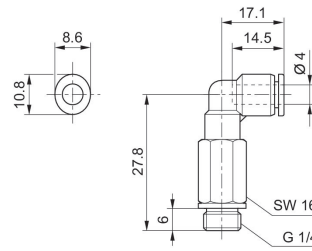
2122106180



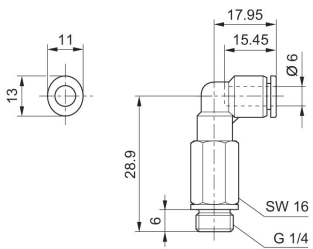
2122108180



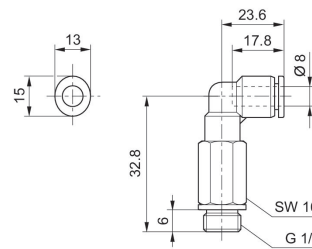
2122104140



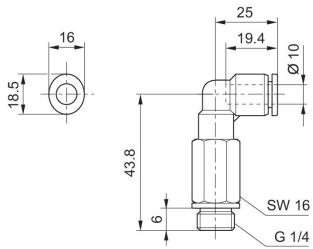
2122106140



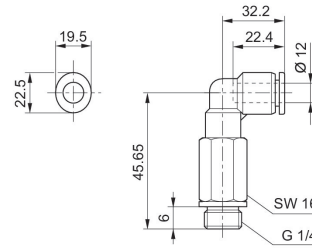
2122108140



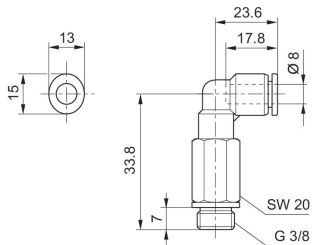
2122110140



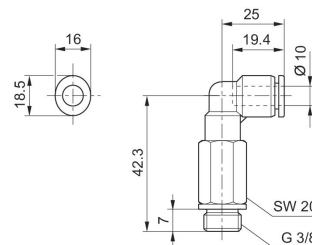
R412005103



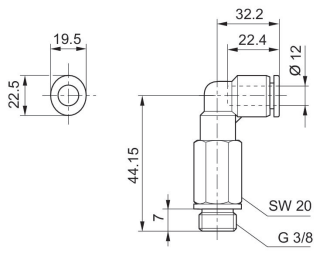
2122108380



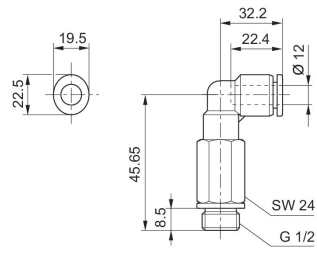
2122110380



**R412005104**

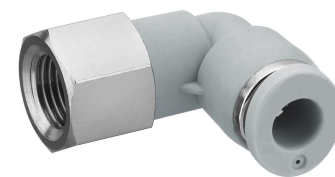


**R412005105**



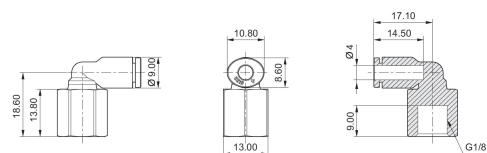
**QR1-S-RVI standard series**

Elbow screw fitting  
Internal thread  
push-in fitting

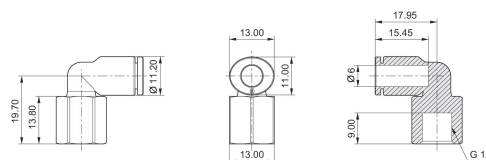


G	Ø D	Delivery unit [piece]	Part No.
G 1/8	Ø 4	10	R412005129
G 1/8	Ø 6	10	R412005130
G 1/8	Ø 8	10	R412005131
G 1/4	Ø 4	10	R412005132
G 1/4	Ø 6	10	R412005133
G 1/4	Ø 8	10	R412005134
G 1/4	Ø 10	10	R412005135

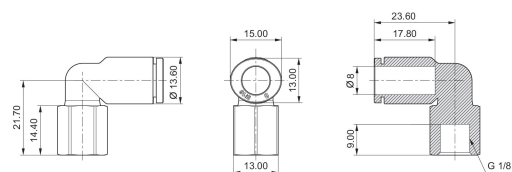
**R412005129**



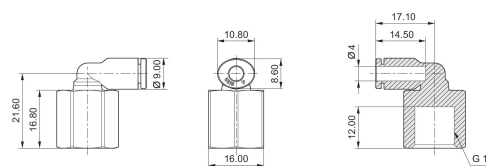
**R412005130**



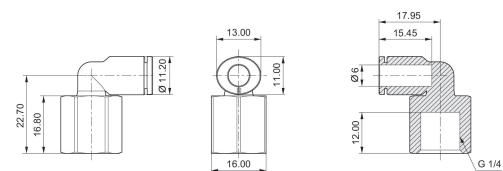
**R412005131**



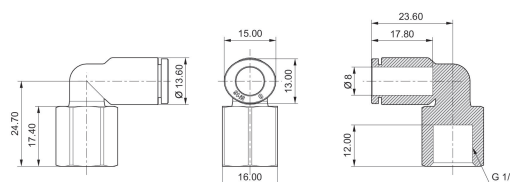
**R412005132**



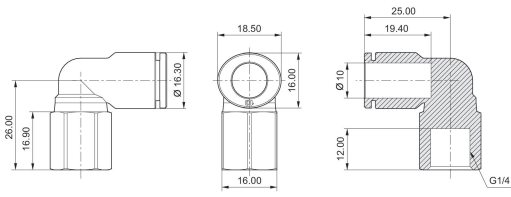
**R412005133**



**R412005134**

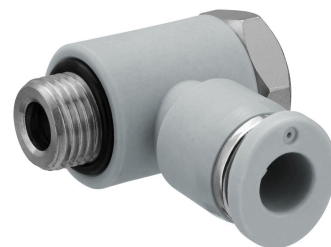


R412005135



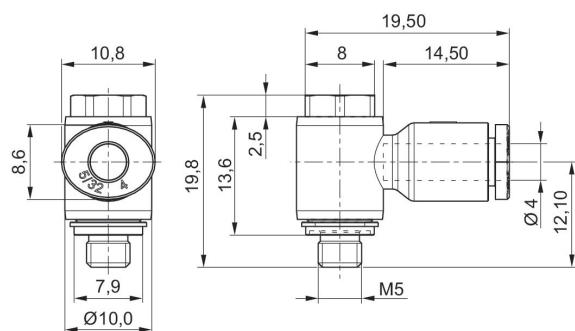
**QR1-S-RW1 standard series**

Swivel banjo connection 1-fold  
External thread  
push-in fitting

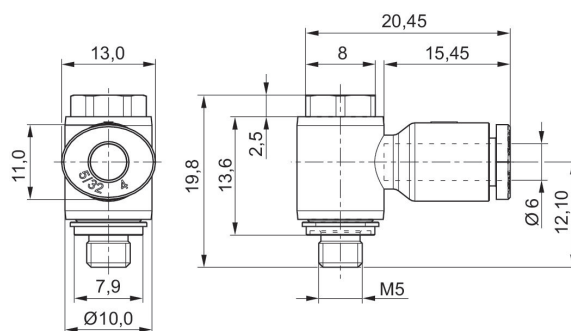


G	Ø D	Delivery unit [piece]	Part No.
M5	Ø 4	10	R412005236
M5	Ø 6	10	R412005238

**R412005236**



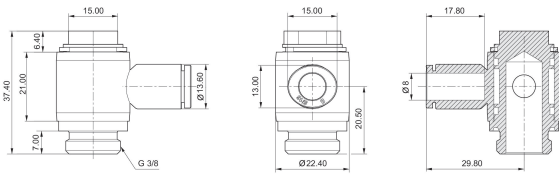
**R412005238**



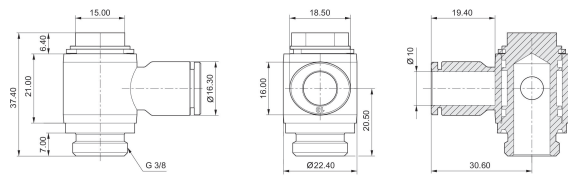




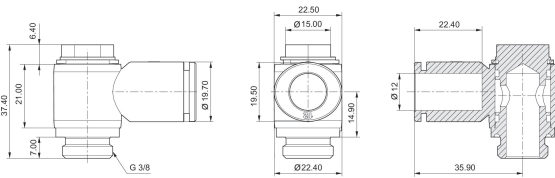
**R412005244**



**R412005245**



**R412005246**



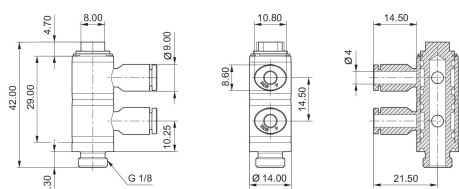
**QR1-S-RW2 standard series**

Swivel banjo connection 2-fold  
External thread  
push-in fitting

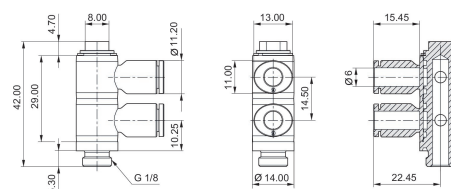


G	Ø D	Delivery unit [piece]	Part No.
G 1/8	Ø 4	10	R412005141
G 1/8	Ø 6	10	R412005144
G 1/8	Ø 8	10	R412005147
G 1/4	Ø 6	10	R412005145
G 1/4	Ø 8	10	R412005148
G 3/8	Ø 8	10	R412005149
G 3/8	Ø 10	5	R412005152
G 1/2	Ø 12	5	R412005155

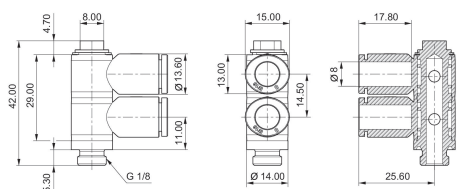
**R412005141**



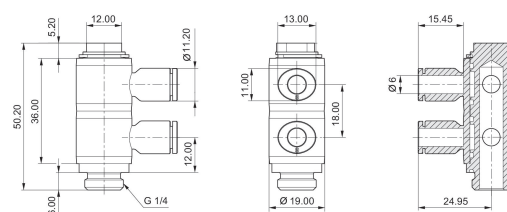
**R412005144**



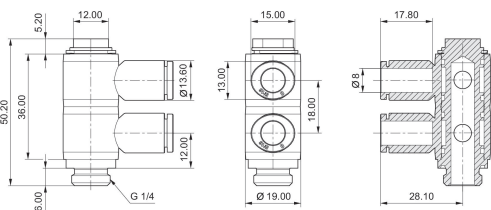
**R412005147**



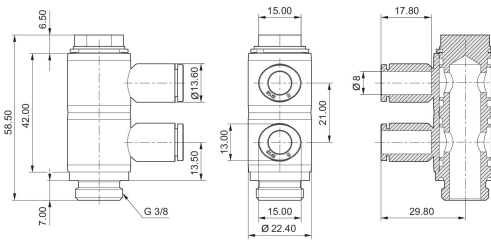
**R412005145**



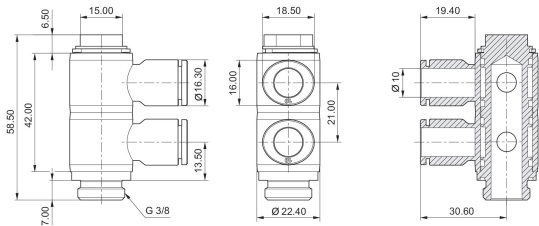
**R412005148**



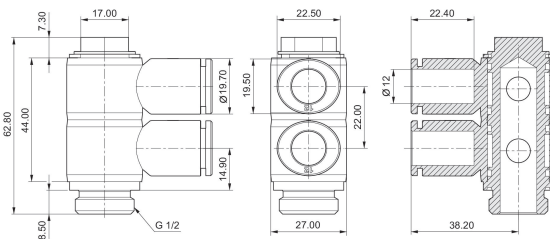
**R412005149**



**R412005152**



**R412005155**



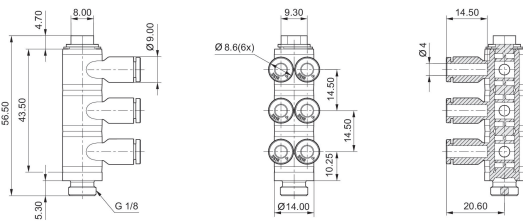
**QR1-S-RW6 standard series**

Swivel banjo connection 3-fold, double  
External thread  
push-in fitting

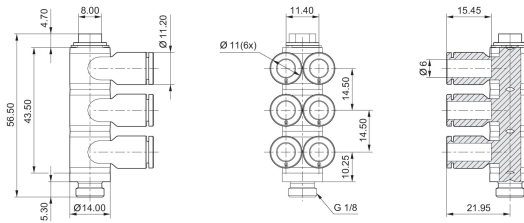


G	Ø D	Delivery unit [piece]	Part No.
G 1/8	Ø 4	10	R412005186
G 1/8	Ø 6	10	R412005187
G 1/4	Ø 4	10	R412005189
G 1/4	Ø 6	10	R412005190
G 1/4	Ø 8	10	R412005191
G 3/8	Ø 6	10	R412005194
G 3/8	Ø 8	10	R412005195
G 3/8	Ø 10	5	R412005196

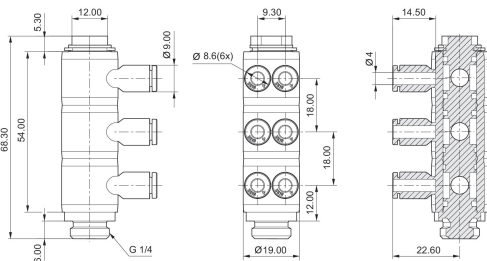
**R412005186**



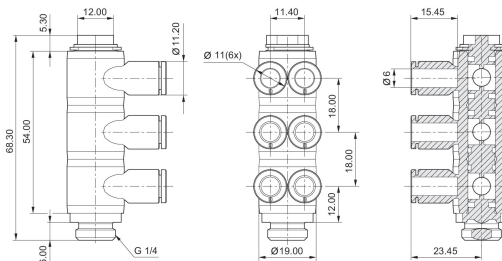
**R412005187**



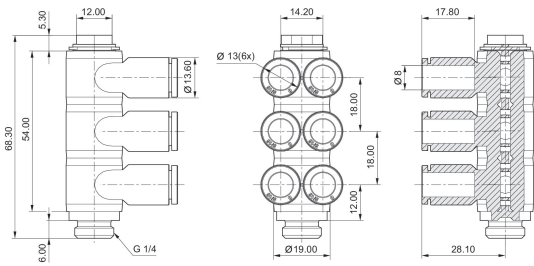
**R412005189**



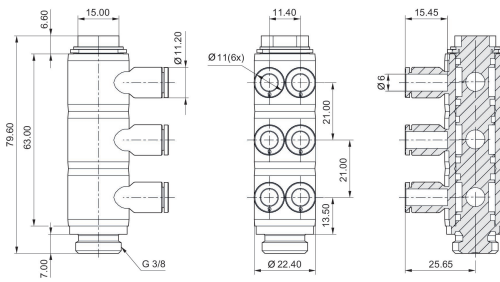
**R412005190**



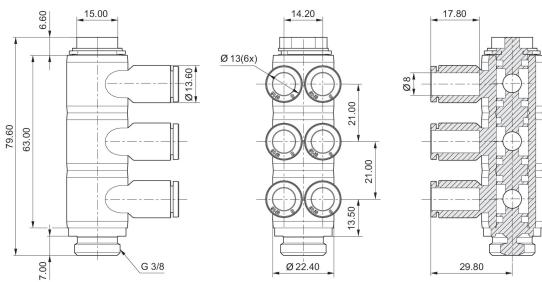
R412005191



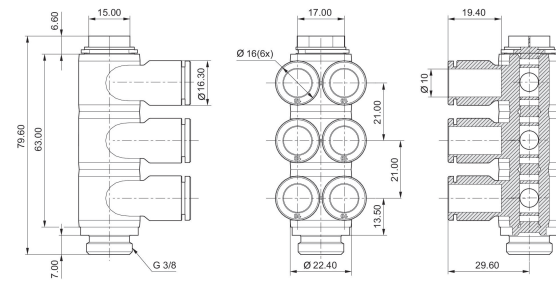
R412005194



R412005195



R412005196



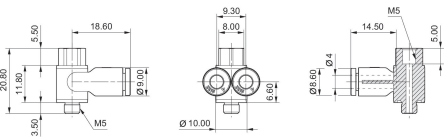
**QR1-S-RID standard series**

Swivel banjo connection 2-fold, with internal thread  
External thread  
push-in fitting

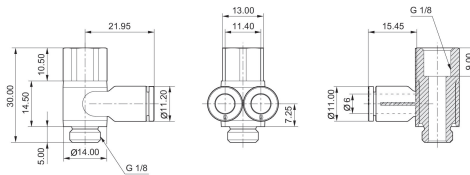


G	Ø D	Ø	Delivery unit [piece]	Part No.
M5	Ø 4	M5	10	R412005259
G 1/8	Ø 6	G 1/8	10	R412005260
G 1/4	Ø 8	G 1/4	10	R412005261
G 3/8	Ø 10	G 3/8	5	R412005262

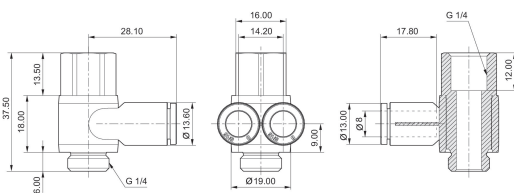
**R412005259**



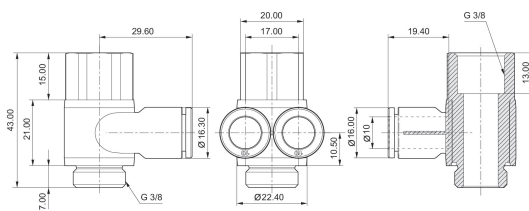
**R412005260**



**R412005261**

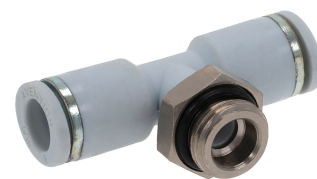


**R412005262**



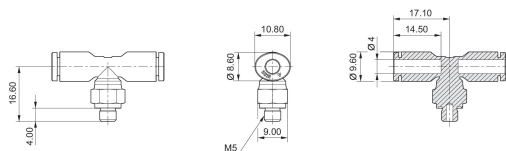
QR1-S-RTT standard series

T-union  
External thread  
push-in fitting

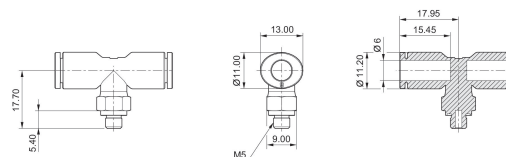


G	Ø D	Delivery unit [piece]	Part No.
M5	Ø 4	10	2122204050
M5	Ø 6	10	R412005201
G 1/8	Ø 4	10	2122204180
G 1/8	Ø 6	10	2122206180
G 1/8	Ø 8	10	2122208180
G 1/8	Ø 10	10	R412005205
G 1/4	Ø 4	10	2122204140
G 1/4	Ø 6	10	2122206140
G 1/4	Ø 8	10	2122208140
G 1/4	Ø 10	10	2122210140
G 1/4	Ø 12	10	R412005206
G 3/8	Ø 6	10	R412005203
G 3/8	Ø 8	10	2122208380
G 3/8	Ø 10	10	2122210380
G 3/8	Ø 12	10	2122212380
G 3/8	Ø 14	10	2122214380
G 1/2	Ø 10	10	2122210120
G 1/2	Ø 12	5	2122212120
G 1/2	Ø 14	5	2122214120
G 1/2	Ø 16	5	R412005209

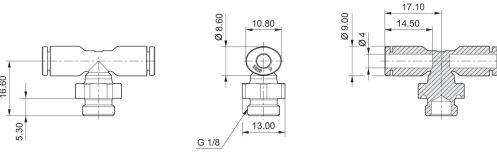
2122204050



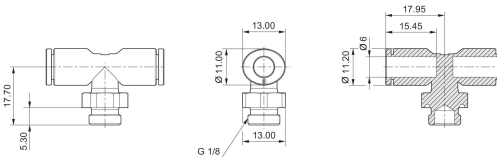
R412005201



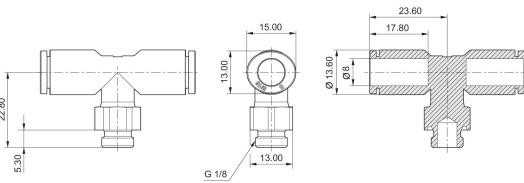
2122204180



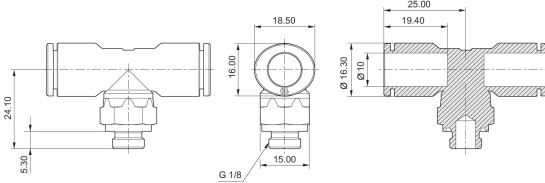
2122206180



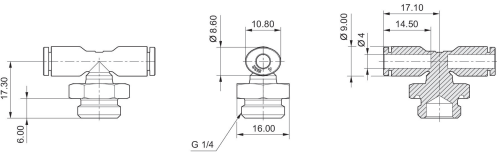
2122208180



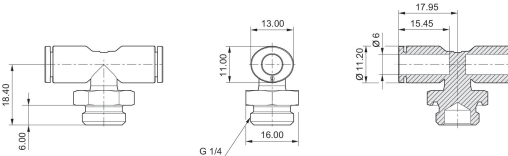
R412005205



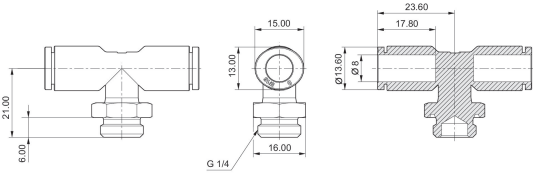
2122204140



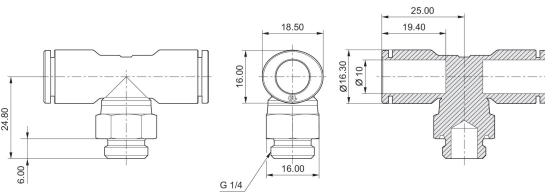
2122206140



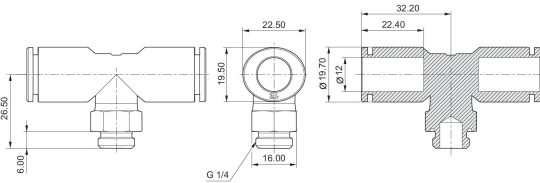
2122208140



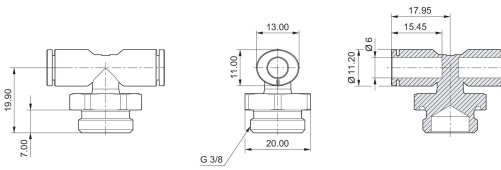
2122210140



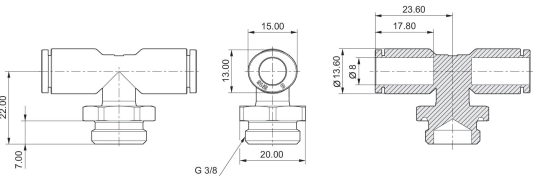
R412005206



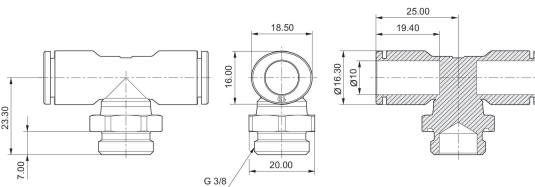
R412005203



2122208380

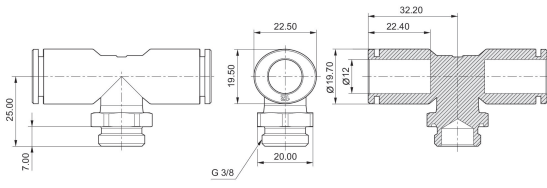


2122210380

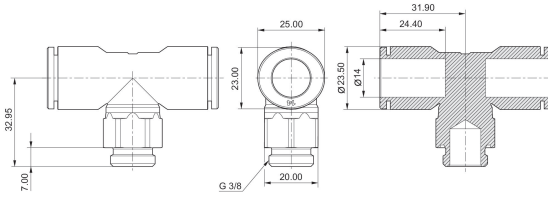




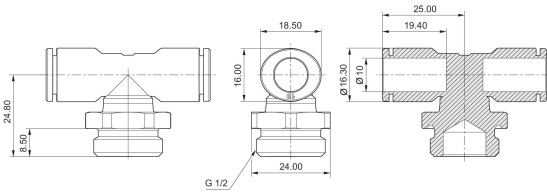
2122212380



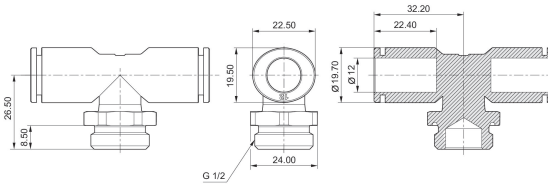
2122214380



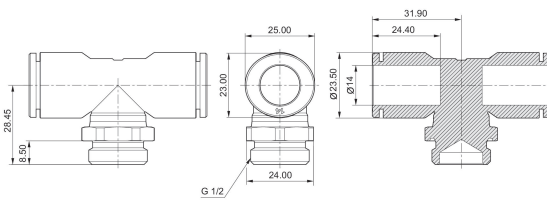
2122210120



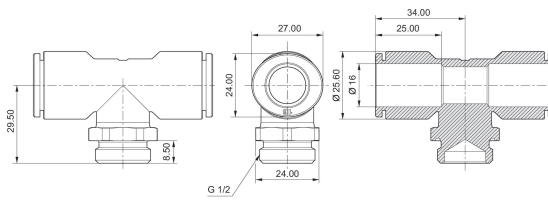
2122212120



2122214120

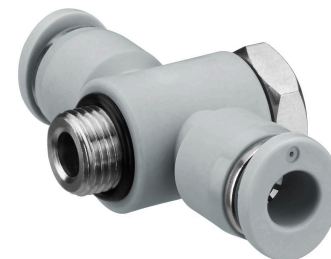


R412005209



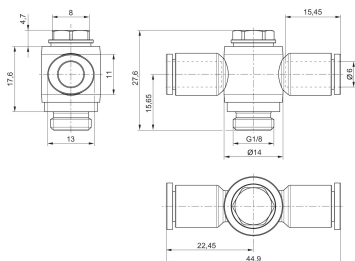
**QR1-S-RTS standard series**

T-Banjo connection  
External thread  
push-in fitting

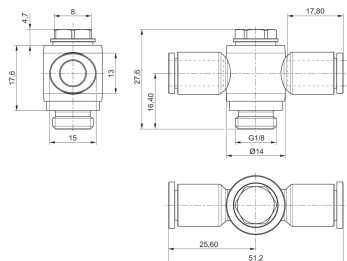


G	Ø D	Delivery unit [piece]	Part No.
G 1/8	Ø 6	10	R412005292
G 1/8	Ø 8	10	R412005293
G 1/4	Ø 6	10	R412005294
G 1/4	Ø 8	10	R412005295

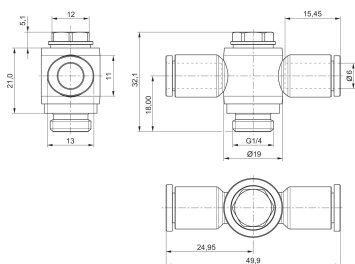
**R412005292**



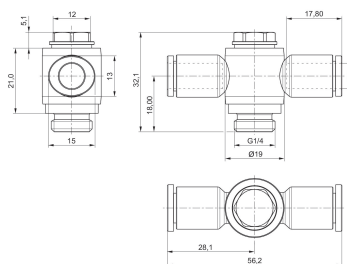
**R412005293**



**R412005294**



**R412005295**



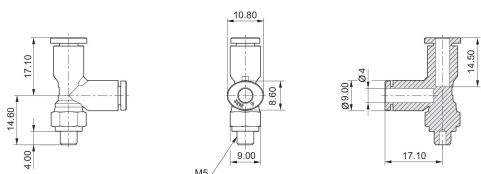
**QR1-S-RLT standard series**

Elbow fitting  
External thread  
push-in fitting

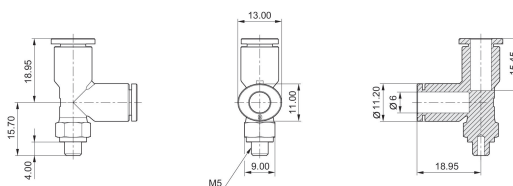


G	Ø D	Delivery unit [piece]	Part No.
M5	Ø 4	10	2122304050
M5	Ø 6	10	R412005212
G 1/8	Ø 4	10	2122304180
G 1/8	Ø 6	10	2122306180
G 1/8	Ø 8	10	R412005214
G 1/4	Ø 4	10	R412005211
G 1/4	Ø 6	10	2122306140
G 1/4	Ø 8	10	2122308140
G 1/4	Ø 10	10	R412005215
G 1/4	Ø 12	5	R412005216
G 3/8	Ø 8	10	2122308380
G 3/8	Ø 10	10	2122310380
G 3/8	Ø 12	5	2122312380
G 1/2	Ø 10	10	2122310120
G 1/2	Ø 12	5	2122312120

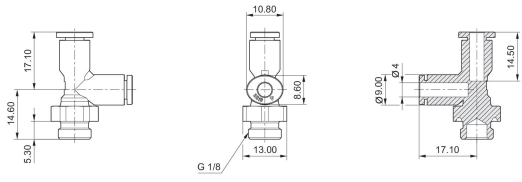
**2122304050**



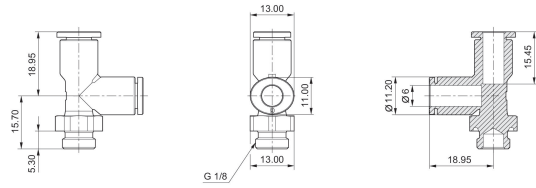
**R412005212**



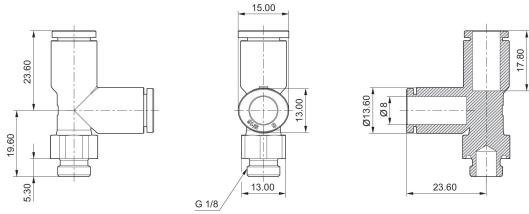
2122304180



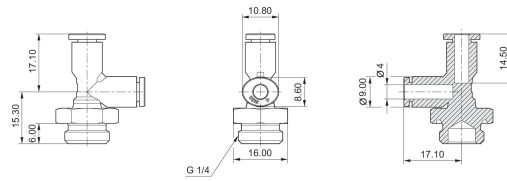
2122306180



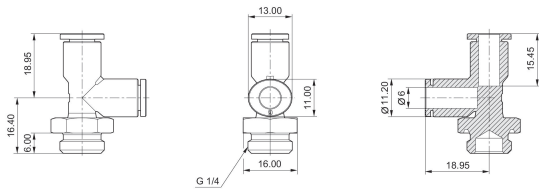
R412005214



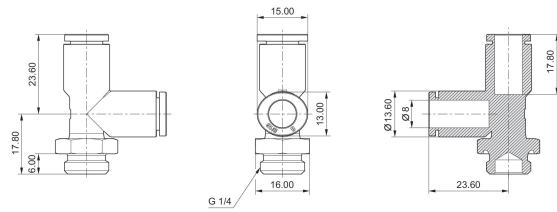
R412005211



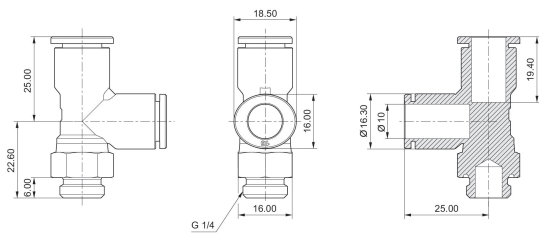
2122306140



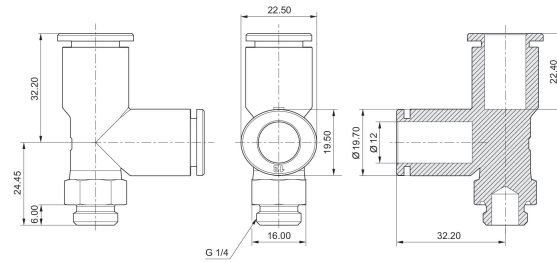
2122308140



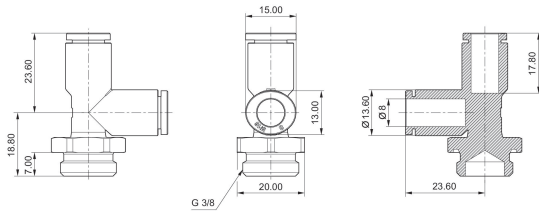
R412005215



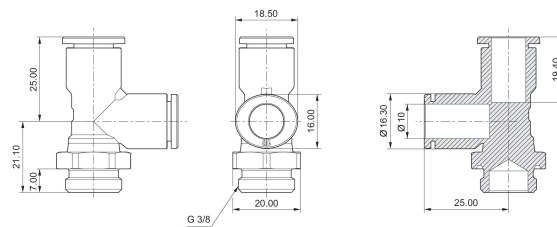
R412005216



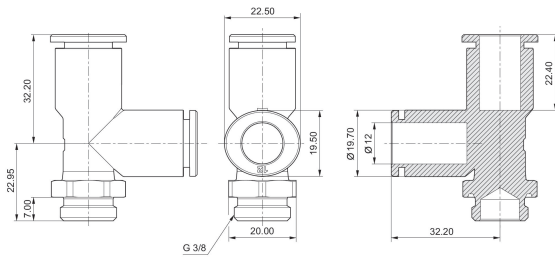
2122308380



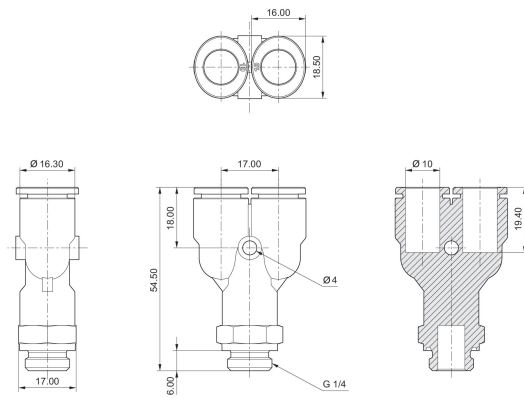
2122310380



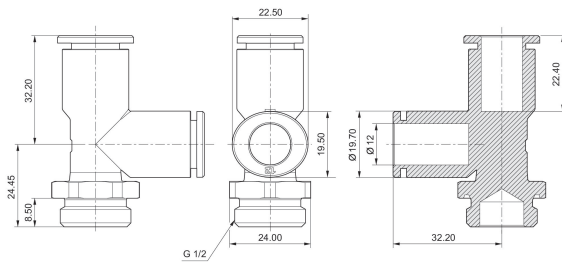
2122312380



2122310120



2122312120



**QR1-S-RAY standard series**

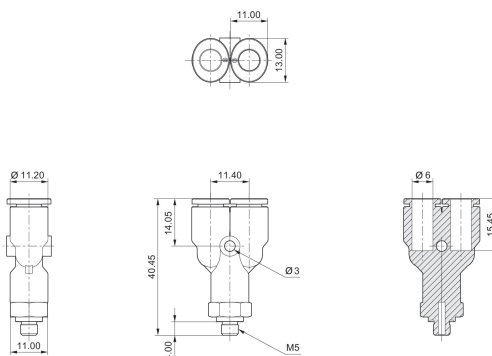
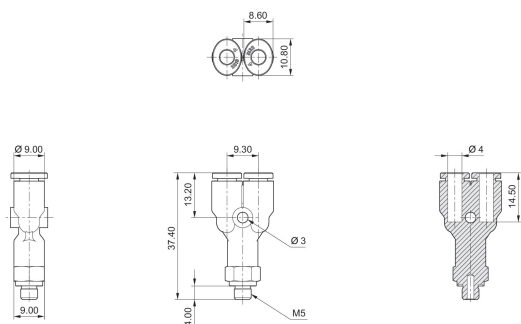
Y-fitting  
External thread  
push-in fitting



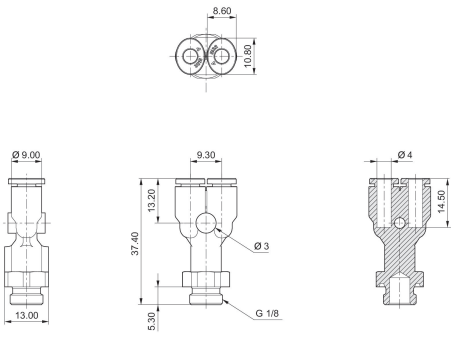
G	Ø D	Delivery unit [piece]	Part No.
M5	Ø 4	10	2122404050
M5	Ø 6	10	R412005219
G 1/8	Ø 4	10	2122404180
G 1/8	Ø 6	10	2122406180
G 1/8	Ø 8	10	2122408180
G 1/4	Ø 4	10	2122404140
G 1/4	Ø 6	10	2122406140
G 1/4	Ø 8	10	2122408140
G 1/4	Ø 10	10	2122410140
G 3/8	Ø 8	10	R412005221
G 3/8	Ø 10	10	2122410380
G 3/8	Ø 12	10	2122412380
G 1/2	Ø 8	10	R412005222
G 1/2	Ø 10	10	2122410120
G 1/2	Ø 12	10	2122412120

**2122404050**

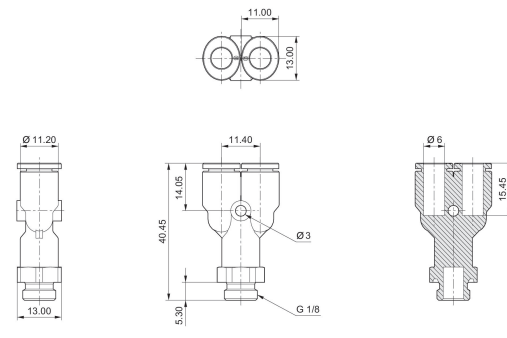
**R412005219**



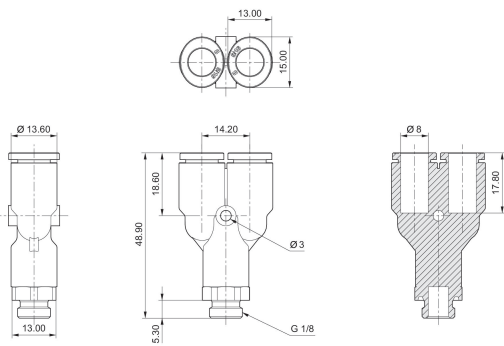
2122404180



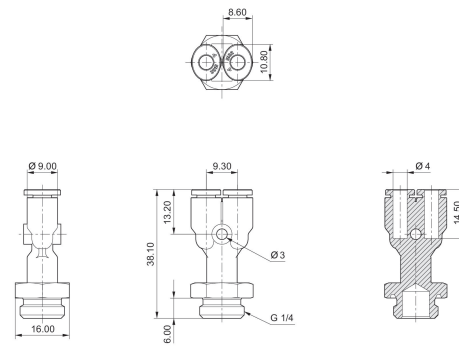
2122406180



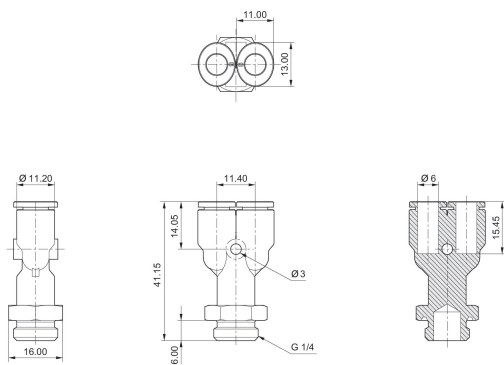
2122408180



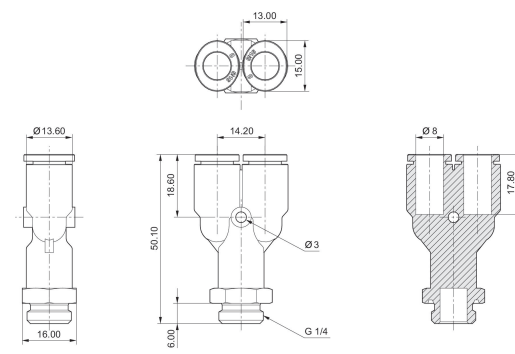
2122404140



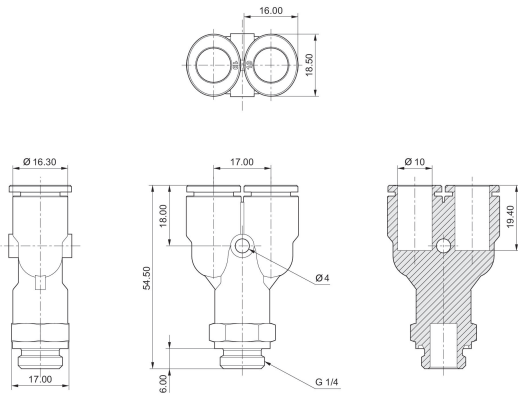
2122406140



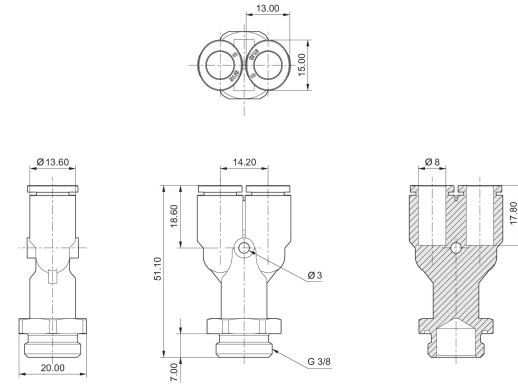
2122408140



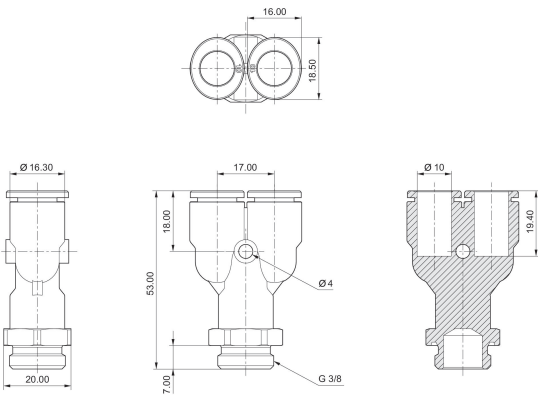
2122410140



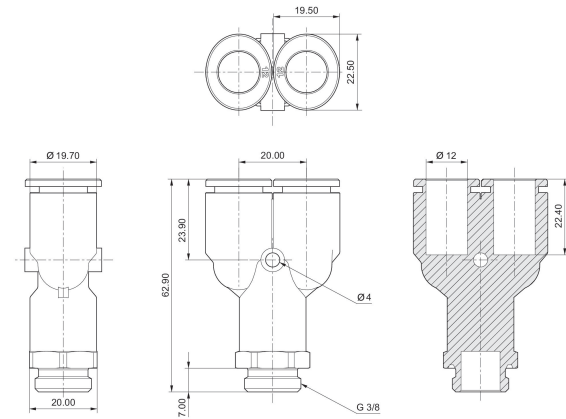
R412005221



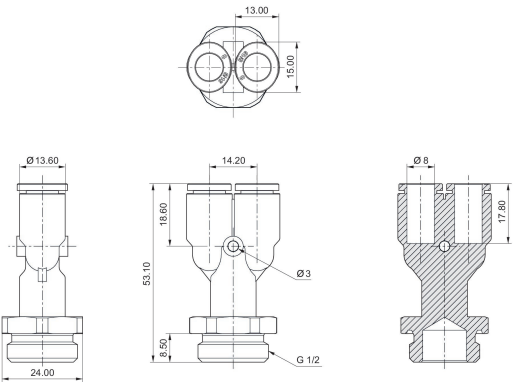
2122410380



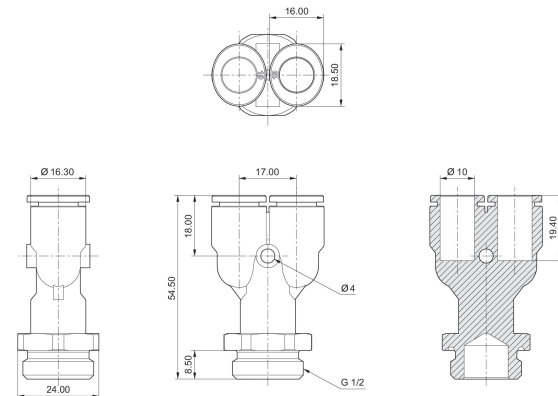
2122412380



R412005222

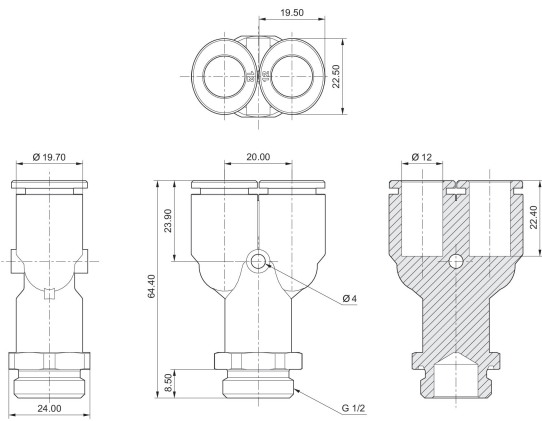


2122410120



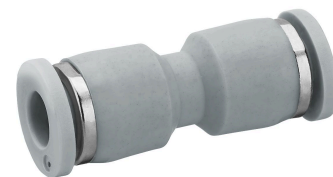


2122412120



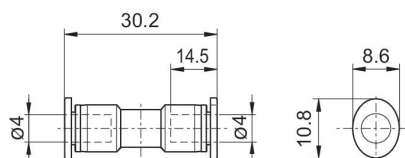
**QR1-S-RSK standard series**

Straight plug connector  
push-in fitting  
push-in fitting

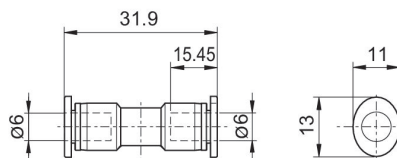


G	Ø D	Delivery unit [piece]	Part No.
Ø 4	Ø 4	10	2121504000
Ø 6	Ø 6	10	2121506000
Ø 8	Ø 8	10	2121508000
Ø 10	Ø 10	10	2121510000
Ø 12	Ø 12	10	2121512000
Ø 14	Ø 14	5	2121514000
Ø 16	Ø 16	5	R412005059

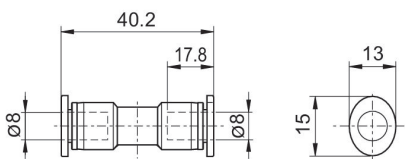
**2121504000**



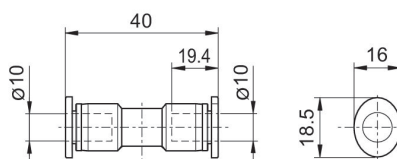
**2121506000**



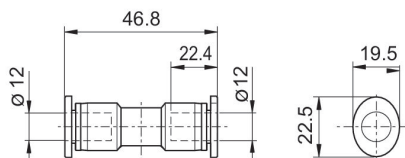
**2121508000**



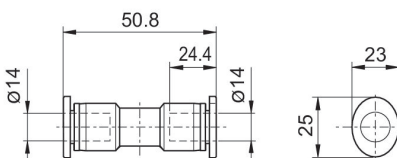
**2121510000**



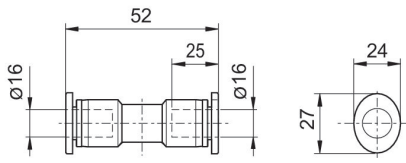
**2121512000**



**2121514000**

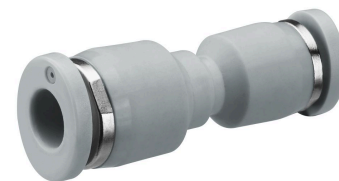


R412005059



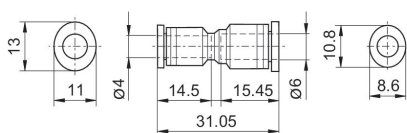
**QR1-S-RSR standard series**

Straight plug connector, reducing  
push-in fitting  
push-in fitting

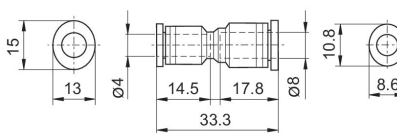


G	Ø D	Delivery unit [piece]	Part No.
Ø 6	Ø 4	10	R412005060
Ø 8	Ø 4	10	R412005061
Ø 8	Ø 6	10	R412005062
Ø 10	Ø 6	10	R412005063
Ø 10	Ø 8	10	R412005064
Ø 12	Ø 8	10	R412005065
Ø 12	Ø 10	10	R412005066
Ø 16	Ø 12	5	R412005067

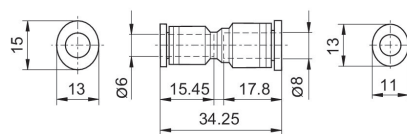
**R412005060**



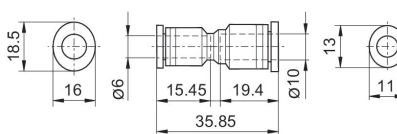
**R412005061**



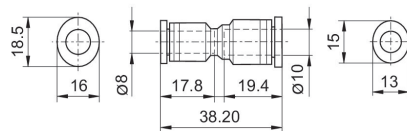
**R412005062**



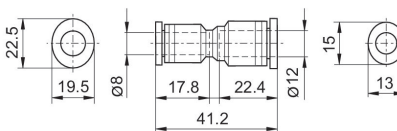
**R412005063**



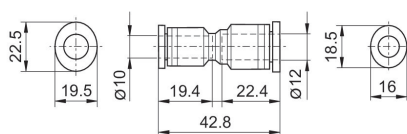
**R412005064**



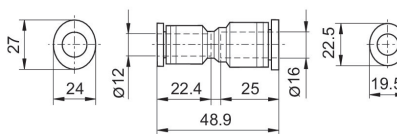
**R412005065**



**R412005066**



**R412005067**



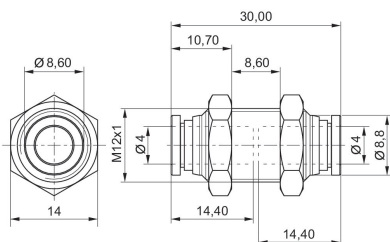
**QR1-S-RSM standard series**

Bulkhead push-in fitting, metal  
push-in fitting  
push-in fitting

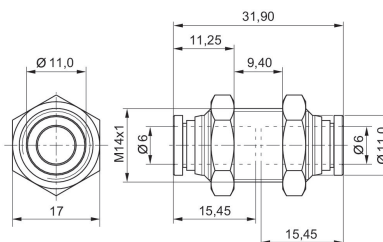


G	Ø D	Delivery unit [piece]	Part No.
Ø 4	Ø 4	10	2121404000
Ø 6	Ø 6	10	2121406000
Ø 8	Ø 8	10	2121408000
Ø 10	Ø 10	10	2121410000
Ø 12	Ø 12	10	2121412000

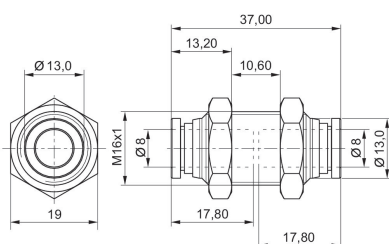
**2121404000**



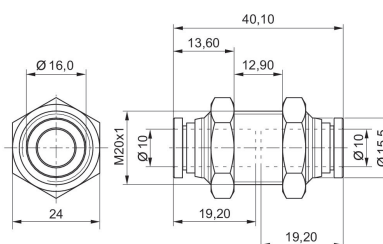
**2121406000**



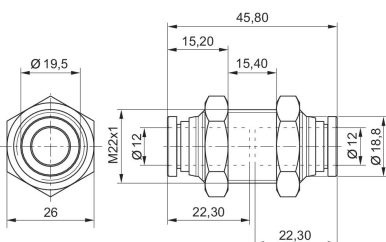
**2121408000**



**2121410000**



**2121412000**



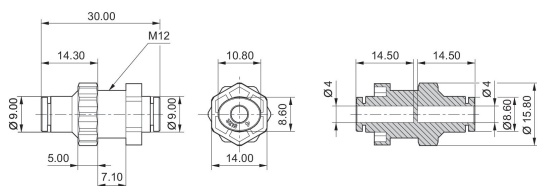
**QR1-S-RSC standard series**

Bulkhead plug connector, plastic  
push-in fitting  
push-in fitting

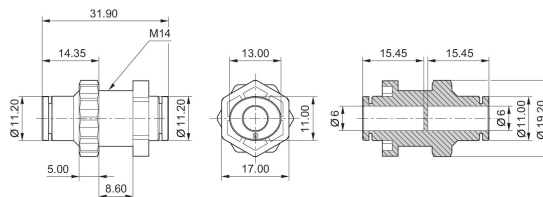


G	Ø D	Delivery unit [piece]	Part No.
Ø 4	Ø 4	10	R412005051
Ø 6	Ø 6	10	R412005052
Ø 8	Ø 8	10	R412005053
Ø 10	Ø 10	10	R412005054
Ø 12	Ø 12	10	R412005055

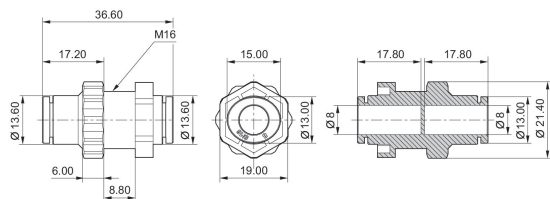
**R412005051**



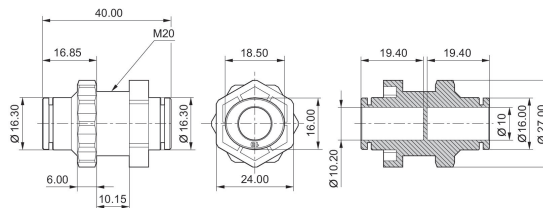
**R412005052**



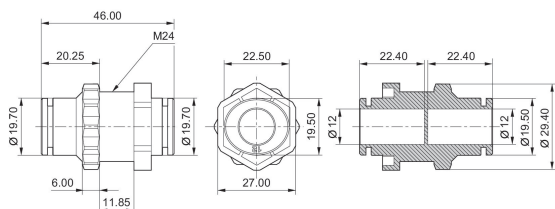
**R412005053**



**R412005054**



**R412005055**



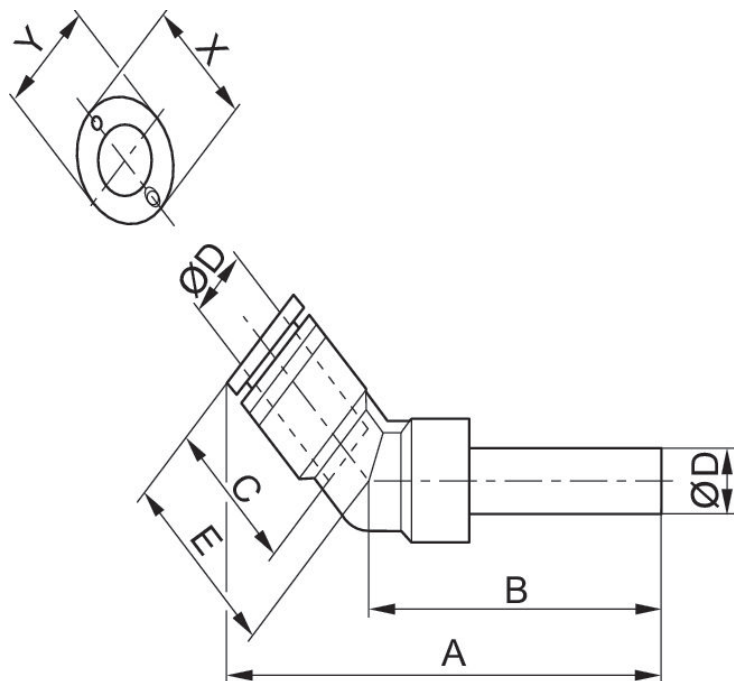
**Series QR1-S-RVW Mini**

Angled plug-in connector  
pin bushing  
push-in fitting



G	Ø D	Delivery unit [piece]	Part No.
Ø 4	Ø 4	10	R412005046

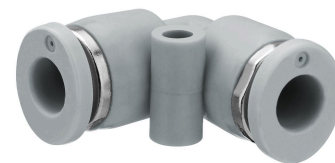
Dimensions



Part No.	Port D	Port G	A	B	C	E	X	Y
R412005046	Ø 4	Ø 4	56,36	43,6	16	18.1	12	10

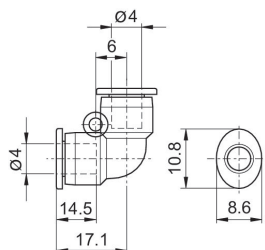
**QR1-S-RVK standard series**

Angled plug connector  
push-in fitting  
push-in fitting

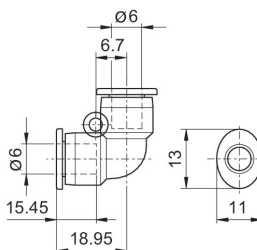


G	Ø D	Delivery unit [piece]	Part No.
Ø 4	Ø 4	10	2121204000
Ø 6	Ø 6	10	2121206000
Ø 8	Ø 8	10	2121208000
Ø 10	Ø 10	10	2121210000
Ø 12	Ø 12	10	2121212000
Ø 14	Ø 14	5	2121214000
Ø 16	Ø 16	5	R412005033

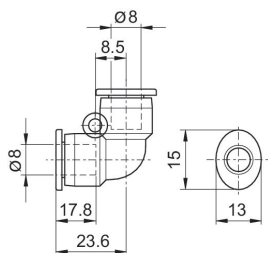
**2121204000**



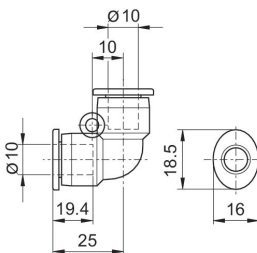
**2121206000**



**2121208000**

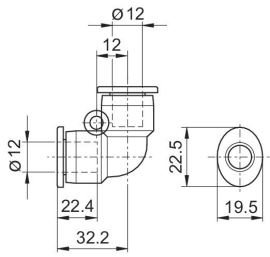


**2121210000**

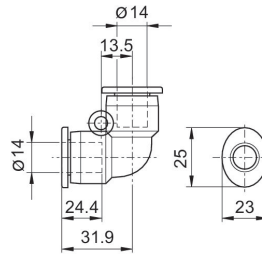




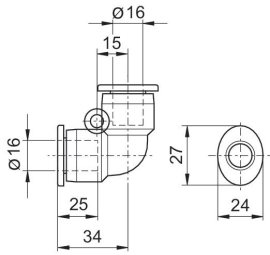
**2121212000**



**2121214000**

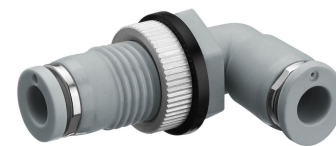


**R412005033**



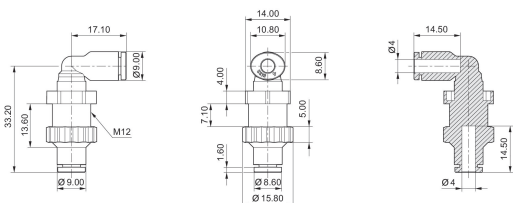
**QR1-S-RVS standard series**

Angled bulkhead connector  
push-in fitting  
push-in fitting

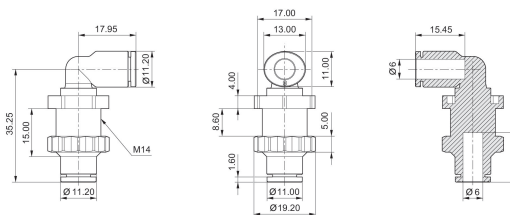


G	Ø D	Delivery unit [piece]	Part No.
Ø 4	Ø 4	10	R412005056
Ø 6	Ø 6	10	R412005057
Ø 8	Ø 8	10	R412005375
Ø 10	Ø 10	10	R412005376

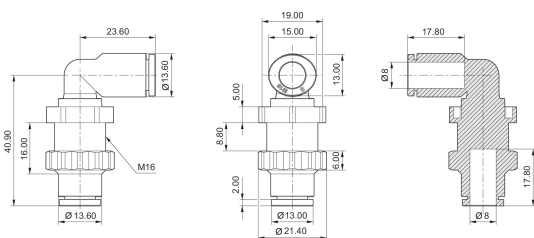
**R412005056**



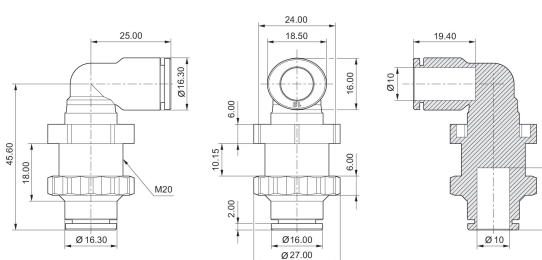
**R412005057**



**R412005375**



**R412005376**



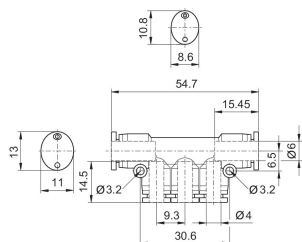
**QR1-S-RMT standard series**

Plug connector, 3x, reducing  
push-in fitting  
push-in fitting

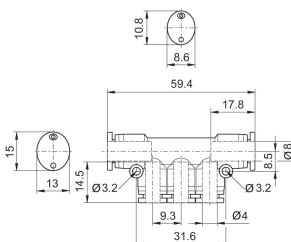


G	Ø D	Delivery unit [piece]	Part No.
Ø 6	Ø 4	10	R412005346
Ø 8	Ø 4	10	R412005347
Ø 8	Ø 6	10	R412005348
Ø 10	Ø 6	10	R412005349
Ø 10	Ø 8	10	R412005350

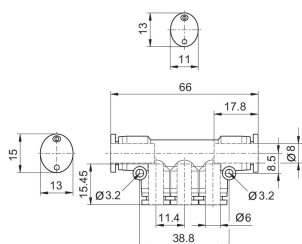
**R412005346**



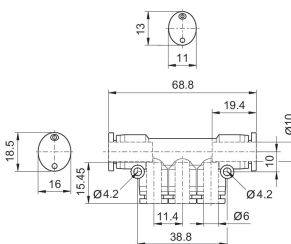
**R412005347**



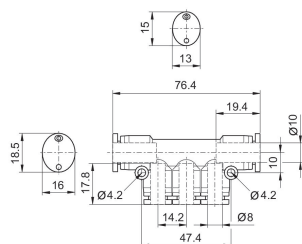
**R412005348**



**R412005349**



**R412005350**



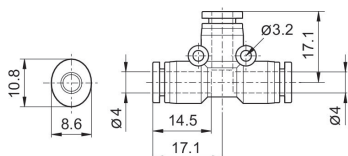
**QR1-S-RTK standard series**

T-plug connector  
push-in fitting  
push-in fitting

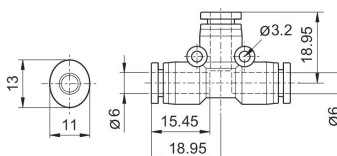


G	Ø D	Delivery unit [piece]	Part No.
Ø 4	Ø 4	10	2121104000
Ø 6	Ø 6	10	2121106000
Ø 8	Ø 8	10	2121108000
Ø 10	Ø 10	10	2121110000
Ø 12	Ø 12	10	2121112000
Ø 14	Ø 14	5	2121114000
Ø 16	Ø 16	5	R412005025

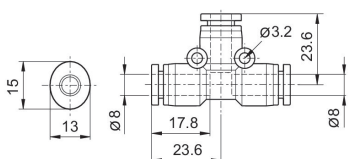
**2121104000**



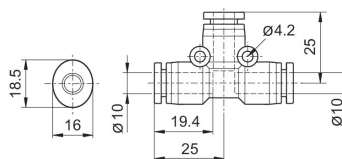
**2121106000**



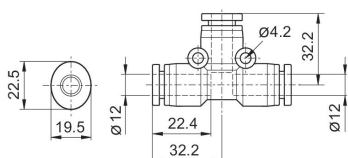
**2121108000**



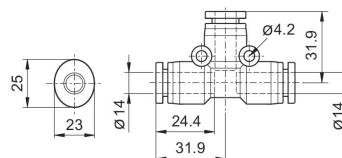
**2121110000**



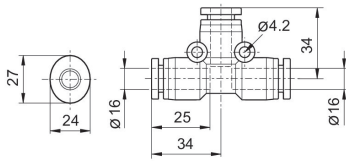
**2121112000**



**2121114000**



R412005025



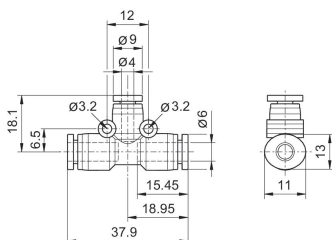
**QR1-S-RTR standard series**

T-plug connector, reducing  
push-in fitting  
push-in fitting

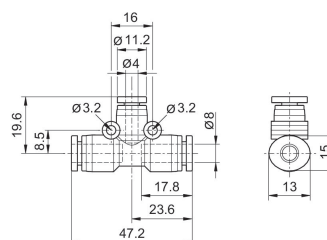


G	Ø D	Delivery unit [piece]	Part No.
Ø 6	Ø 4	10	R412005026
Ø 8	Ø 4	10	R412005027
Ø 8	Ø 6	10	R412005028
Ø 10	Ø 6	10	R412005029
Ø 10	M8	10	R412005030
Ø 12	Ø 8	10	R412005031
Ø 12	Ø 10	10	R412005032

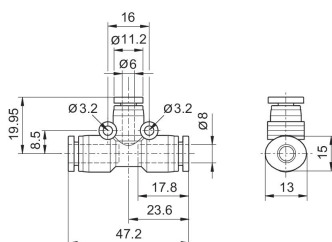
**R412005026**



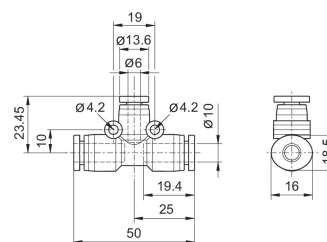
**R412005027**



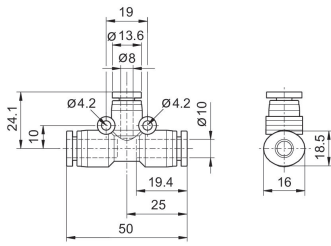
**R412005028**



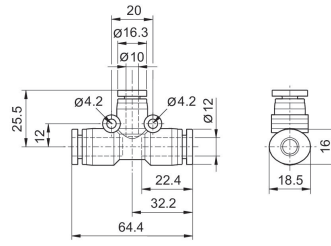
**R412005029**



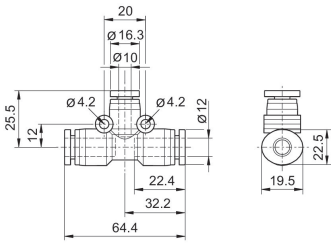
**R412005030**



**R412005031**

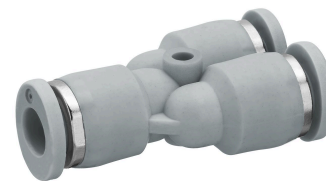


**R412005032**



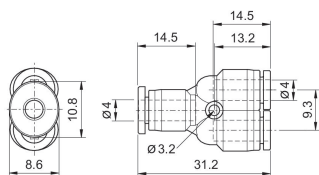
**QR1-S-RYK standard series**

Y - Plug connection  
push-in fitting  
push-in fitting

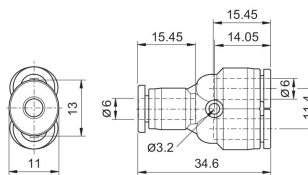


G	Ø D	Delivery unit [piece]	Part No.
Ø 4	Ø 4	10	2121804000
Ø 6	Ø 6	10	2121806000
Ø 8	Ø 8	10	2121808000
Ø 10	Ø 10	10	2121810000
Ø 12	Ø 12	10	2121812000

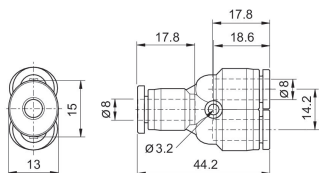
**2121804000**



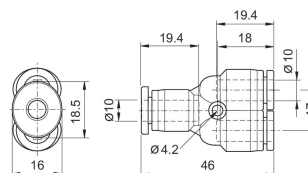
**2121806000**



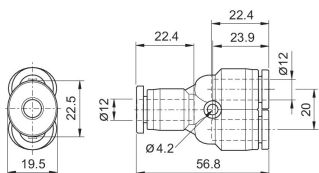
**2121808000**



**2121810000**



**2121812000**



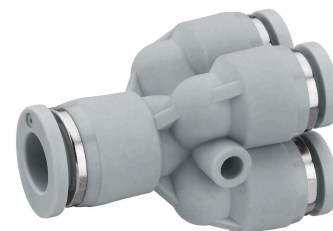






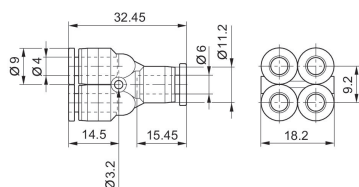
**QR1-S-RYD standard series**

Y-Plug connector, reducing  
double  
push-in fitting  
push-in fitting

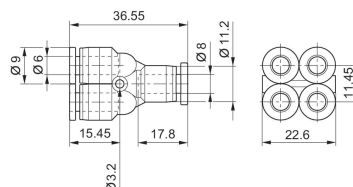


G	Ø D	Delivery unit [piece]	Part No.
Ø 6	Ø 4	10	R412005344
Ø 8	Ø 6	10	R412005345

**R412005344**



**R412005345**



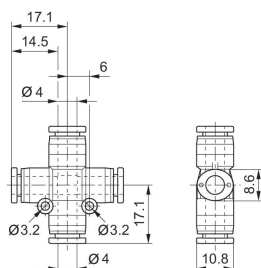
**QR1-S-RXS standard series**

X-Plug connection  
push-in fitting  
push-in fitting

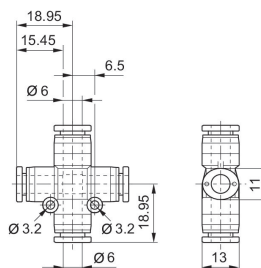


G	Ø D	Delivery unit [piece]	Part No.
Ø 4	Ø 4	10	R412005361
Ø 6	Ø 6	10	R412005362
Ø 8	Ø 8	10	R412005363
Ø 10	Ø 10	10	R412005364

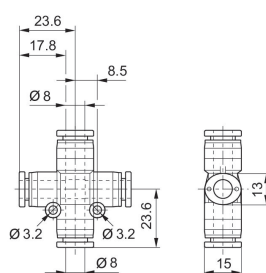
**R412005361**



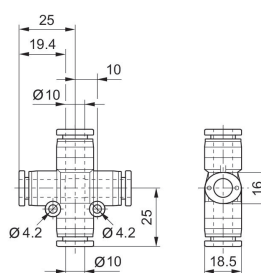
**R412005362**



**R412005363**



**R412005364**



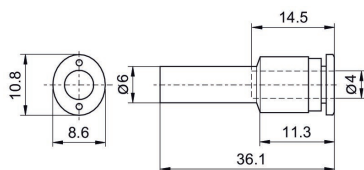
**QR1-S-RED standard series**

Straight push-in fitting, reducing  
push-in fitting  
pin bushing

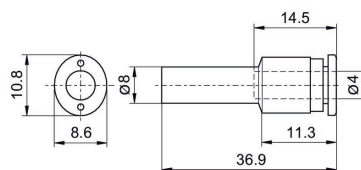


G	Ø D	Delivery unit [piece]	Part No.
Ø 4	Ø 6	10	2121706040
Ø 4	Ø 8	10	2121708040
Ø 4	Ø 10	10	2121710040
Ø 6	Ø 8	10	2121708060
Ø 6	Ø 10	10	2121710060
Ø 6	Ø 12	10	2121712060
Ø 8	Ø 10	10	2121710080
Ø 8	Ø 12	10	2121712080
Ø 8	Ø 14	10	2121714080
Ø 10	Ø 12	10	2121712100
Ø 10	Ø 14	10	2121714100
Ø 12	Ø 14	10	2121714120

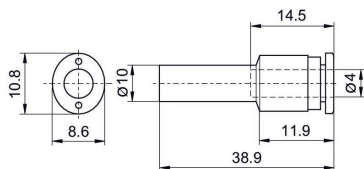
**2121706040**



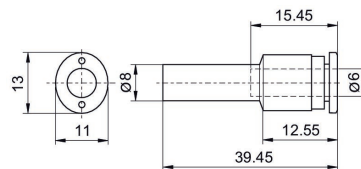
**2121708040**



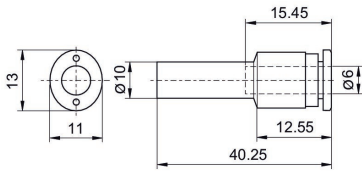
**2121710040**



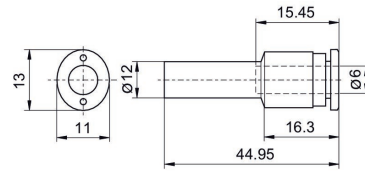
**2121708060**



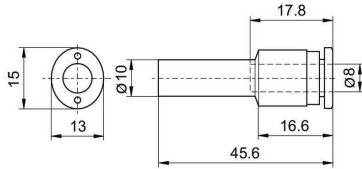
**2121710060**



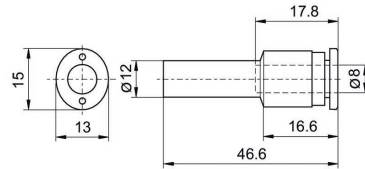
**2121712060**



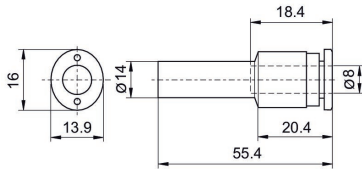
**2121710080**



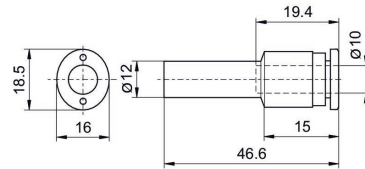
**2121712080**



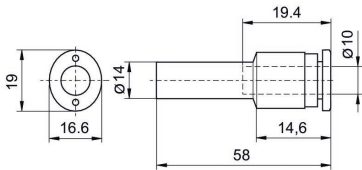
**2121714080**



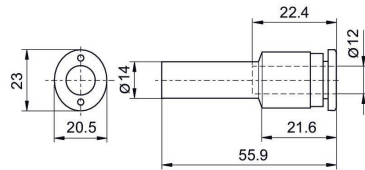
**2121712100**



**2121714100**

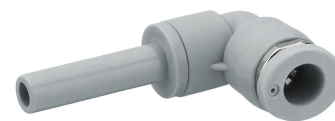


**2121714120**



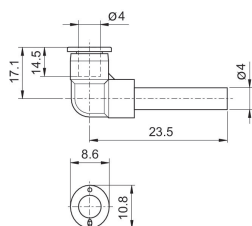
**QR1-S-RVA standard series**

Angled plug-in connector  
pin bushing  
push-in fitting

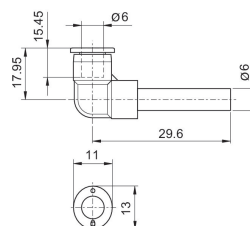


G	Ø D	Delivery unit [piece]	Part No.
Ø 4	Ø 4	10	2121304040
Ø 6	Ø 6	10	2121306060
Ø 8	Ø 8	10	2121308080
Ø 10	Ø 10	10	2121310100
Ø 12	Ø 12	10	R412005036

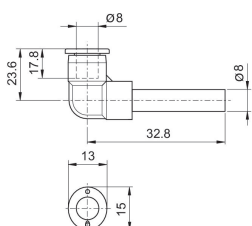
**2121304040**



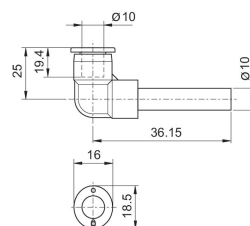
**2121306060**



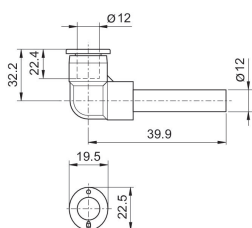
**2121308080**



**2121310100**



**R412005036**



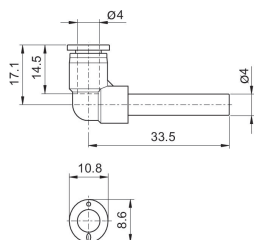
**QR1-S-RLL standard series**

Angled plug-in connector  
Pin bushing, long  
push-in fitting

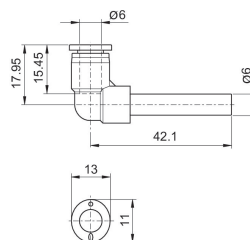


G	Ø D	Delivery unit [piece]	Part No.
Ø 4	Ø 4	10	R412005039
Ø 6	Ø 6	10	R412005040
Ø 8	Ø 8	10	R412005041
Ø 10	Ø 10	10	R412005042
Ø 12	Ø 12	10	R412005043

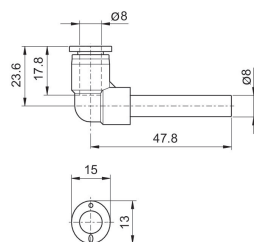
**R412005039**



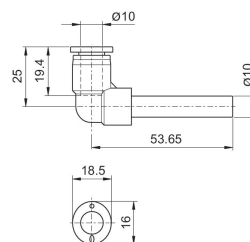
**R412005040**



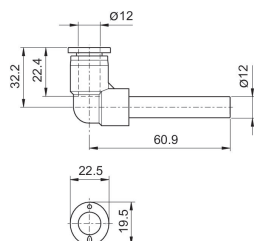
**R412005041**



**R412005042**



**R412005043**





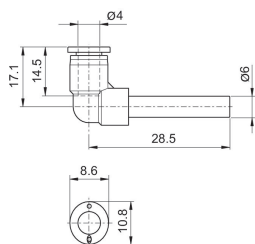
**QR1-S-RVR standard series**

Angled plug-in connector  
Push-in fitting, reducing  
pin bushing

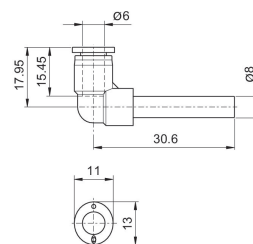


G	Ø D	Delivery unit [piece]	Part No.
Ø 4	Ø 6	10	2121304060
Ø 6	Ø 8	10	2121306080
Ø 8	Ø 10	10	R412005034

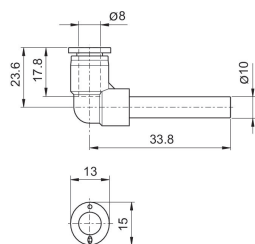
**2121304060**



**2121306080**

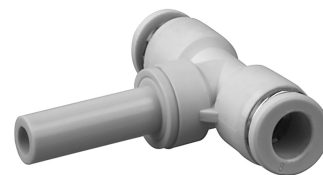


**R412005034**



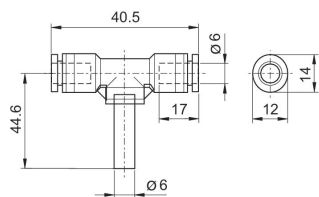
**QR1-S-RTC standard series**

T-push-in fitting  
pin bushing  
push-in fitting

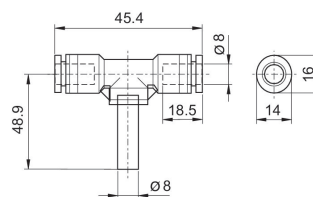


G	Ø D	Delivery unit [piece]	Part No.
Ø 6	Ø 6	10	2122706000
Ø 8	Ø 8	10	2122708000
Ø 12	Ø 12	10	R412010596

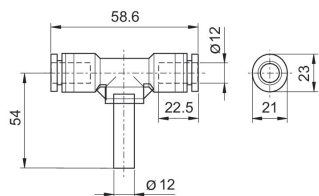
**2122706000**



**2122708000**



**R412010596**



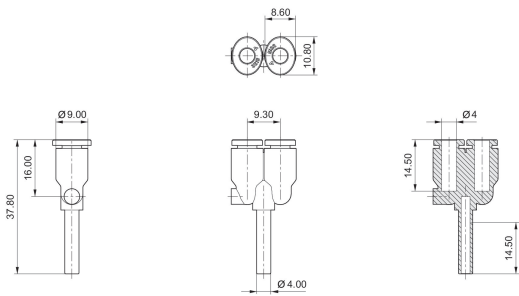
**QR1-S-RY2 standard series**

Y - Push-in fitting  
pin bushing  
push-in fitting

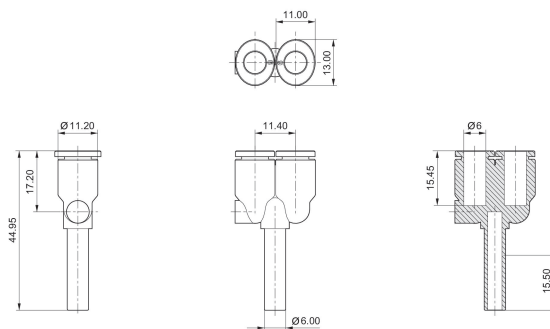


G	Ø D	Delivery unit [piece]	Part No.
Ø 4	Ø 4	10	R412005332
Ø 6	Ø 6	10	R412005333
Ø 8	Ø 8	10	R412005334
Ø 10	Ø 10	10	R412005335
Ø 12	Ø 12	10	R412005336

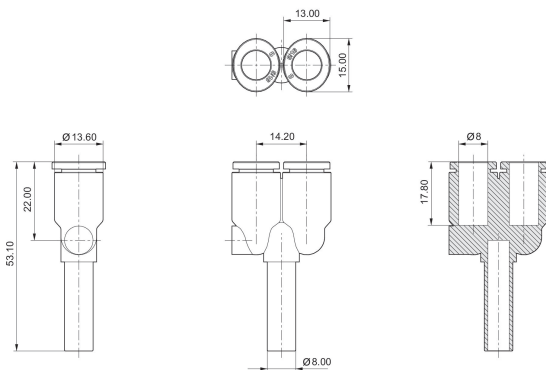
**R412005332**



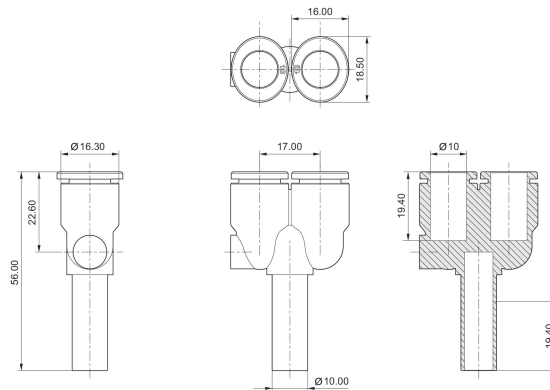
**R412005333**



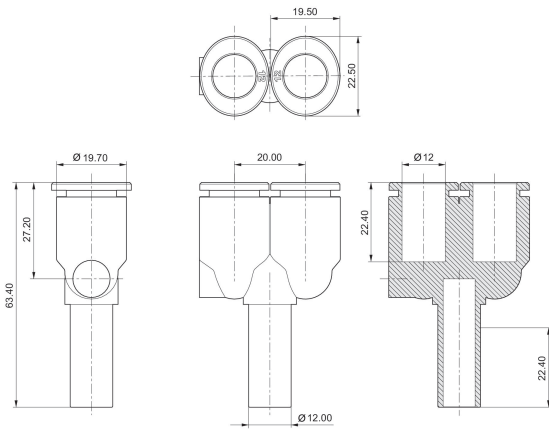
**R412005334**



**R412005335**

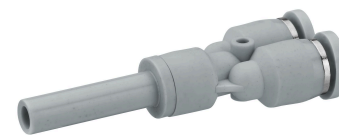


R412005336



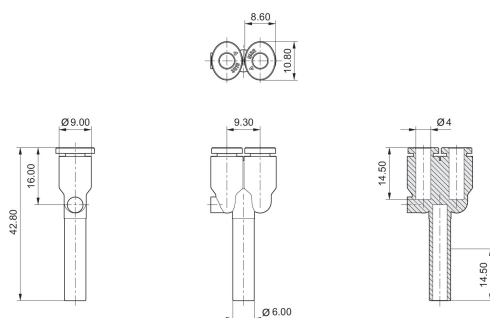
**QR1-S-R2R standard series**

Y-Push-in fitting, reducing  
push-in fitting  
pin bushing

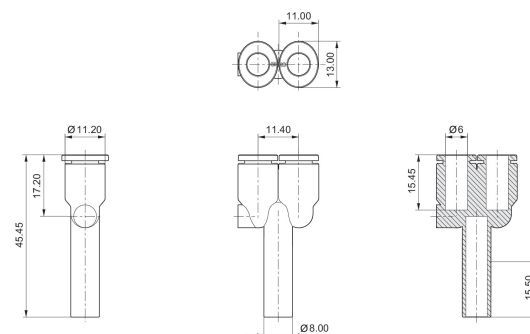


G	Ø D	Delivery unit [piece]	Part No.
Ø 4	Ø 6	10	R412005337
Ø 6	Ø 8	10	R412005338
Ø 8	Ø 10	10	R412005339
Ø 10	Ø 12	10	R412005340

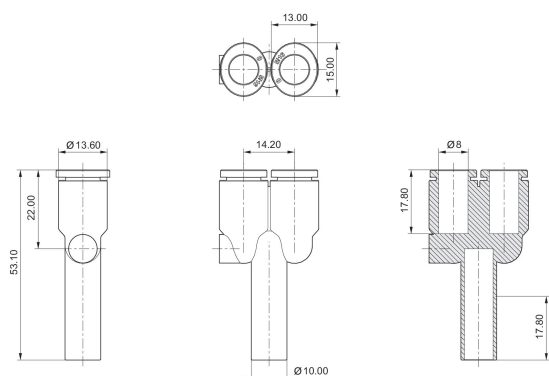
**R412005337**



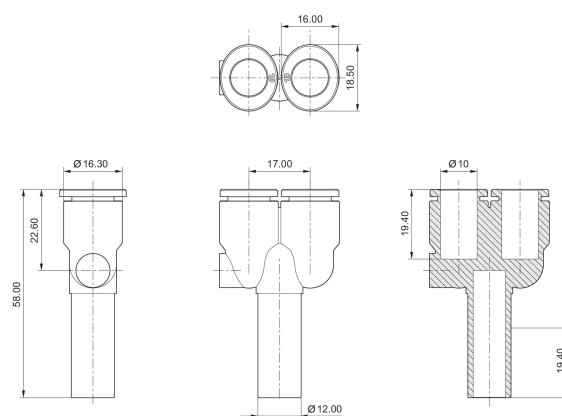
**R412005338**



**R412005339**

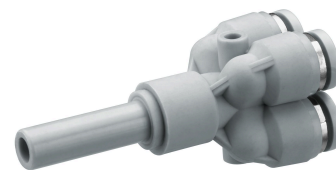


**R412005340**



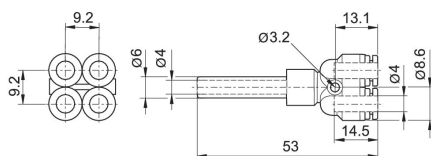
**QR1-S-RY4 standard series**

Y-Push-in fitting, reducing  
pin bushing  
push-in fitting

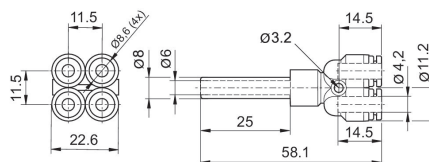


G	Ø D	Delivery unit [piece]	Part No.
Ø 4	Ø 6	10	R412005341
Ø 4	Ø 8	10	R412005342

**R412005341**

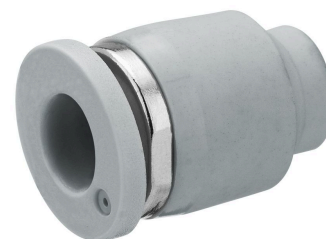


**R412005342**



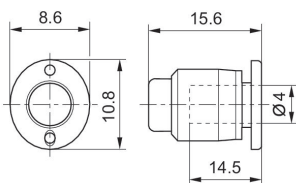
QR1-S-RCA standard series

Sealing cap  
push-in fitting

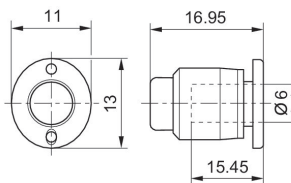


G	Delivery unit [piece]	Part No.
Ø 4	20	R412005111
Ø 6	20	R412005112
Ø 8	20	R412005113
Ø 10	20	R412005114
Ø 12	20	R412005115

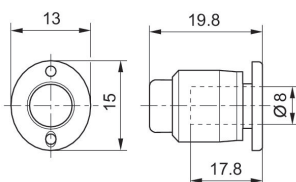
R412005111



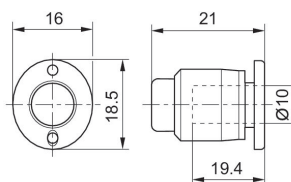
R412005112



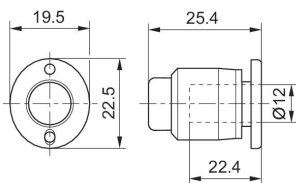
R412005113



R412005114



R412005115



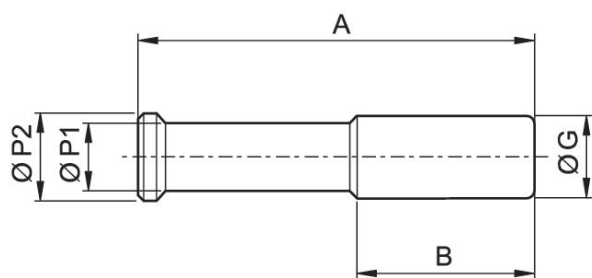
**QR1-S-RBS standard series**

Blanking plug  
pin bushing



G	Delivery unit [piece]	Part No.
Ø 4	20	2123204000
Ø 6	20	2123206000
Ø 8	20	2123208000
Ø 10	20	2123210000
Ø 12	20	2123212000
Ø 14	10	2123214000
Ø16	10	R412005331

Dimensions



Part No.	Port G	A	B	Ø P1	Ø P2
2123204000		28	16	3	4
2123206000		32	17	4	6
2123208000		39	21,5	5	9
2123210000		42	21	8	10
2123212000		44	30	8	12
2123214000		45	24.6	8	14
R412005331		46	24.8	10	16



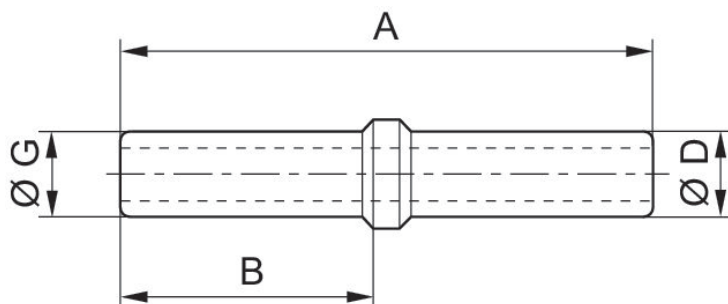
**QR1-S-RDS standard series**

Connection piece  
pin bushing  
pin bushing



G	Ø D	Delivery unit [piece]	Part No.
Ø 4	Ø 4	10	2123104000
Ø 6	Ø 6	10	2123106000
Ø 8	Ø 8	10	2123108000
Ø 10	Ø 10	10	2123110000
Ø 12	Ø 12	10	2123112000

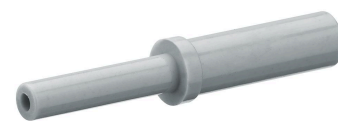
Dimensions



Part No.	Port D	Port G	A	B
2123104000			37,5	17,8
2123106000			39,7	18,7
2123108000			43,4	20,7
2123110000			47,2	22,6
2123112000			53	25,5
2123114000			53	-
R412005322			54	24,8

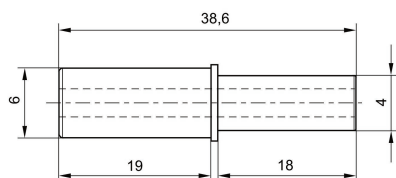
**QR1-S-RDR standard series**

Connection pieces, reducing  
pin bushing  
pin bushing

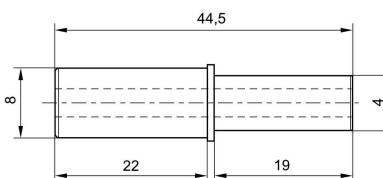


G	Ø D	Delivery unit [piece]	Part No.
Ø 6	Ø 4	10	R412005323
Ø 8	Ø 4	10	R412005324
Ø 8	Ø 6	10	R412005325
Ø 10	Ø 6	10	R412005326
Ø 10	Ø 8	10	R412005327
Ø 12	Ø 8	10	R412005328
Ø 12	Ø 10	10	R412005329

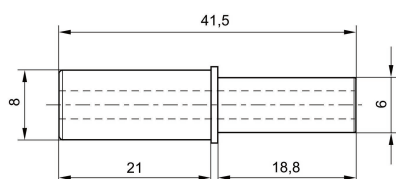
**R412005323**



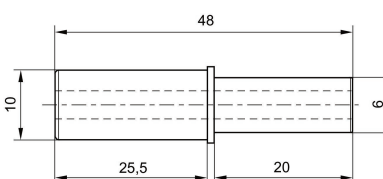
**R412005324**



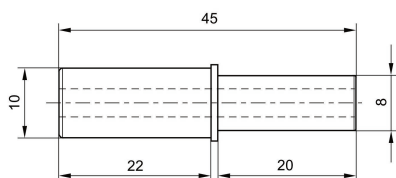
**R412005325**



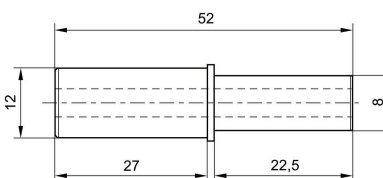
**R412005326**



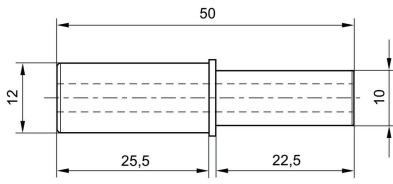
**R412005327**



**R412005328**

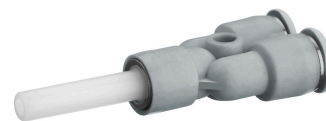


R412005329



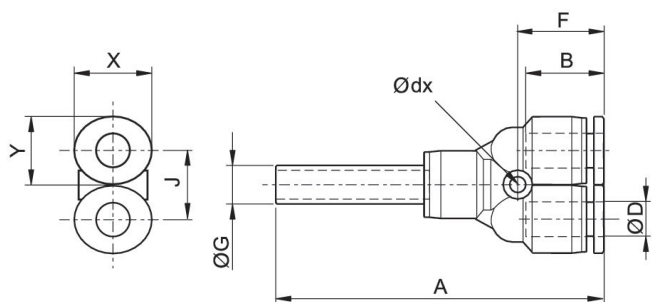
**Series QR1-S-M2R Mini**

Y-Push-in fitting, reducing  
pin bushing  
push-in fitting



G	Ø D	Delivery unit [piece]	Part No.
Ø 4	Ø 3	25	R412005445
Ø 6	Ø 4	25	R412005446

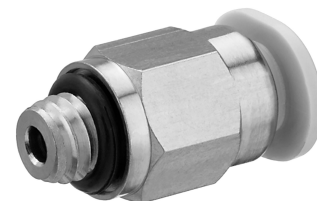
Dimensions



Part No.	Port D	Port G	Ø dx	A	B	F	J	X	Y
R412005445	Ø 3	Ø 4	3.2	33	9.5	13.4	8	7	6
R412005446	Ø 4	Ø 6	3.2	38.5	11.5	13.6	10.5	10	8

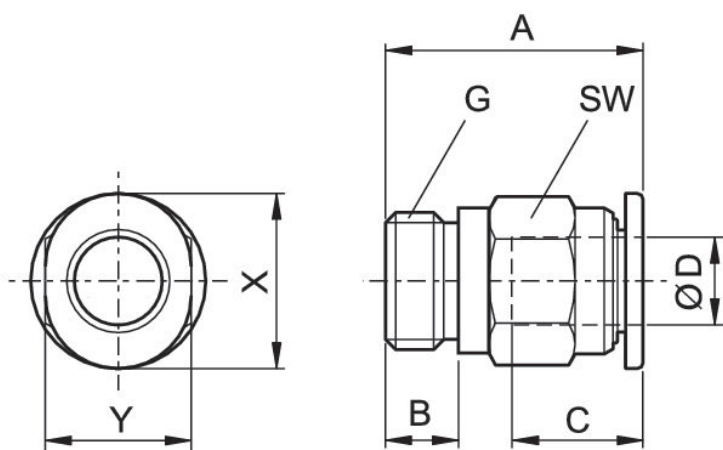
**Series QR1-S-MAN Mini**

Straight fitting with hexagon head  
External thread  
push-in fitting



G	Ø D	Delivery unit [piece]	Part No.
M3	Ø 3	25	R412005116
M3	Ø 4	25	R412005117
M5	Ø 3	25	R412005118
M5	Ø 4	25	R412005119
M5	Ø 6	25	R412005120
M6	Ø 3	25	R412005121
M6	Ø 4	25	R412005122
M6	Ø 6	25	R412005123
G 1/8	Ø 4	25	R412005124
G 1/8	Ø 6	25	R412005125

Dimensions



Part No.	Port D	Port G	A	B	C	SW	X	Y
R412005116	Ø 3	M3	13.6	3	9.5	6	7	6
R412005117	Ø 4	M3	17.2	3	11.5	8	10	8
R412005118	Ø 3	M5	16.2	4	9.5	8	7	6
R412005119	Ø 4	M5	16.2	4	11.5	8	10	8

Part No.	Port D	Port G	A	B	C	SW	X	Y
R412005120	Ø 6	M5	17.3	4 M3	12.5	10	12	10
R412005121	Ø 3	M6	17	5	9.5	8	7	6
R412005122	Ø 4	M6	17.4	5	11.5	8	10	8
R412005123	Ø 6	M6	18.3	5	12.5	10	12	10
R412005124	Ø 4	G 1/8	12.7	5	11.5	10	10	8
R412005125	Ø 6	G 1/8	14.9	5	12.5	10	12	10

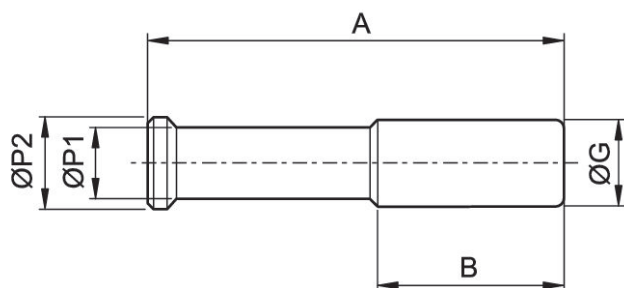
**Series QR1-S-MBS Mini**

Blanking plug  
pin bushing



G	Delivery unit [piece]	Part No.
Ø 3	25	R412005447

Dimensions



Part No.	Port G	A	B	Ø P1	Ø P2
R412005447	Ø 3	22	9.5	3	4

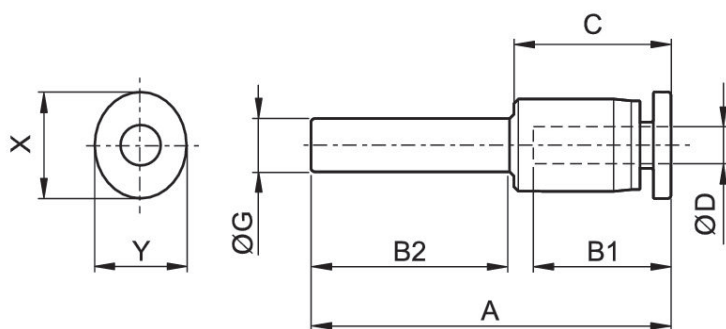
**Series QR1-S-MED Mini**

Straight push-in fitting, reducing  
pin bushing  
push-in fitting



G	Ø D	Delivery unit [piece]	Part No.
Ø 4	Ø 3	25	R412005437
Ø 6	Ø 4	25	R412005438

Dimensions



Part No.	Port D	Port G	A	B1	B2	C	X	Y
R412005437	Ø 3	Ø 4	29.2	9.5	11.5	11.2	7	6
R412005438	Ø 4	Ø 6	33.2	11.5	12.5	13.2	10	8

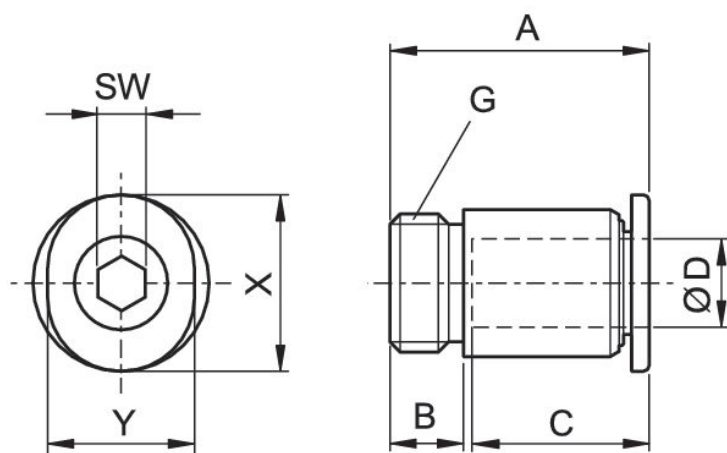


**Series QR1-S-MIN Mini**

Straight fitting with hexagon socket  
External thread  
push-in fitting



G	Ø D	Delivery unit [piece]	Part No.
M3	Ø 3	25	R412005264
M3	Ø 4	25	R412005265
M5	Ø 3	25	R412005266
M5	Ø 4	25	R412005267
M5	Ø 6	25	R412005268
M6	Ø 3	25	R412005269
M6	Ø 4	25	R412005270
M6	Ø 6	25	R412005271
M7	Ø 4	25	R412005272
M7	Ø 6	25	R412005273
G 1/8	Ø 4	25	R412005274
G 1/8	Ø 6	25	R412005275

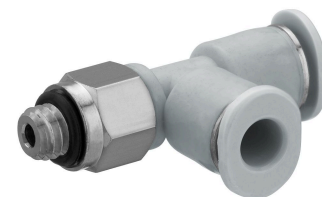


Part No.	Port D	Port G	A	B	C	SW	X	Y
R412005264	Ø 3	M3	15.9	3	9.5	1.5	7	6
R412005265	Ø 4	M3	18	3	11.5	1.5	10	8
R412005266	Ø 3	M5	18	4	9.5	2	7	6

Part No.	Port D	Port G	A	B	C	SW	X	Y
R412005267	Ø 4	M5	16.3	4	11.5	2.5	10	8
R412005268	Ø 6	M5	17.8	4	12.5	2.5	12	10
R412005269	Ø 3	M6	20.2	5	9.5	3	7	6
R412005270	Ø 4	M6	20.2	5	11.5	3	10	8
R412005271	Ø 6	M6	18.8	5	12.5	3	12	10
R412005272	Ø 4	M7	21.4	5	11.5	3	10	8
R412005273	Ø 6	M7	20.1	5	12.5	3	12	10
R412005274	Ø 4	G 1/8	17	5	11.5	3	10	8
R412005275	Ø 6	G 1/8	20.6	5	12.5	4	12	10

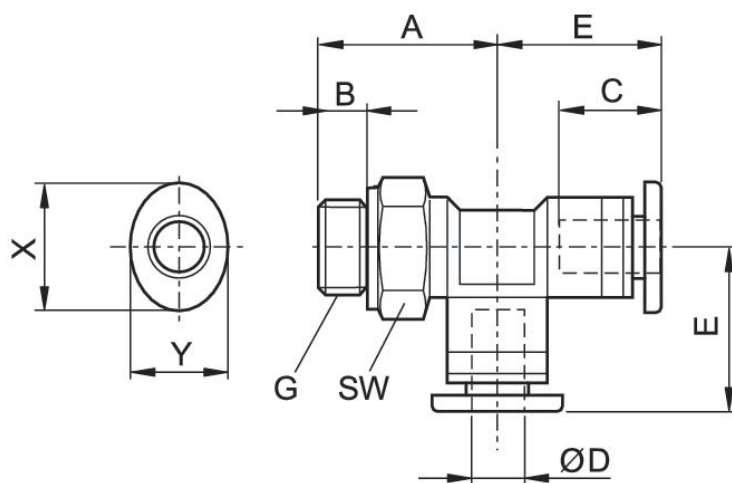
**Series QR1-S-MLT Mini**

Elbow fitting  
External thread  
push-in fitting



G	Ø D	Delivery unit [piece]	Part No.
M5	Ø 4	25	R412005405
M5	Ø 6	25	R412005406
G 1/8	Ø 4	25	R412005410
G 1/8	Ø 6	25	R412005411

Dimensions



Part No.	Port D	Port G	A	B	C	E	SW	X	Y
R412005405	Ø 4	M5	15	4	11.5	13.1	8	10	8
R412005406	Ø 6	M5	17	4	12.5	14.4	8	12	10
R412005410	Ø 4	G 1/8	13.4	5	11.5	13.1	10	10	8
R412005411	Ø 6	G 1/8	15	5	12.5	14.4	10	12	10

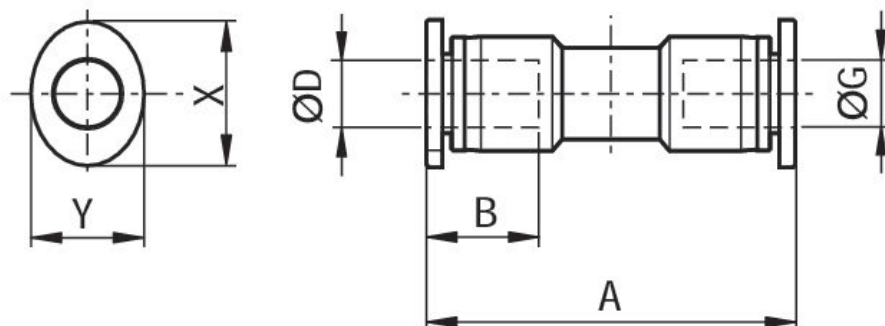
**Series QR1-S-MSK Mini**

Straight plug connector  
push-in fitting  
push-in fitting



G	Ø D	Delivery unit [piece]	Part No.
Ø 3	Ø 3	25	R412005412
Ø 4	Ø 4	25	R412005413
Ø 6	Ø 6	25	R412005414

Dimensions



Part No.	Port D	Port G	A	B	X	Y
R412005412	Ø 3	Ø 3	20.4	9.5	7	6
R412005413	Ø 4	Ø 4	23.8	11.5	10	8
R412005414	Ø 6	Ø 6	25.1	12.5	12	10

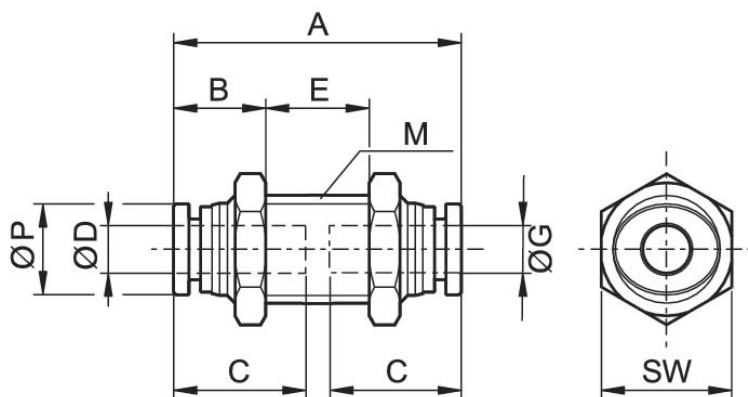
**Series QR1-S-MSM Mini**

Bulkhead push-in fitting, metal  
push-in fitting  
push-in fitting



G	Ø D	Delivery unit [piece]	Part No.
Ø 4	Ø 4	25	R412005418
Ø 6	Ø 6	25	R412005419

Dimensions



Part No.	Port D	Port G	M	A	B	C	E	SW	Ø P
R412005418	Ø 4	Ø 4	M10x1,0	24	9	11.5	7.5	12	8
R412005419	Ø 6	Ø 6	M12x1,0	25.9	10.5	12.5	6	14	10.5

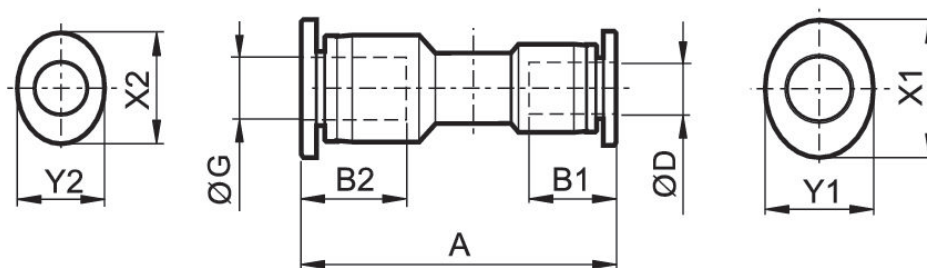
**Series QR1-S-MSR Mini**

Straight plug connector, reducing  
push-in fitting  
push-in fitting



G	Ø D	Delivery unit [piece]	Part No.
Ø 4	Ø 3	25	R412005415
Ø 6	Ø 4	25	R412005416

Dimensions



Part No.	Port D	Port G	A	B1	B2	X1	X2	Y1	Y2
R412005415	Ø 3	Ø 4	22.5	9.5	11.5	7	10	6	8
R412005416	Ø 4	Ø 6	24	11.5	12.5	10	12	8	10

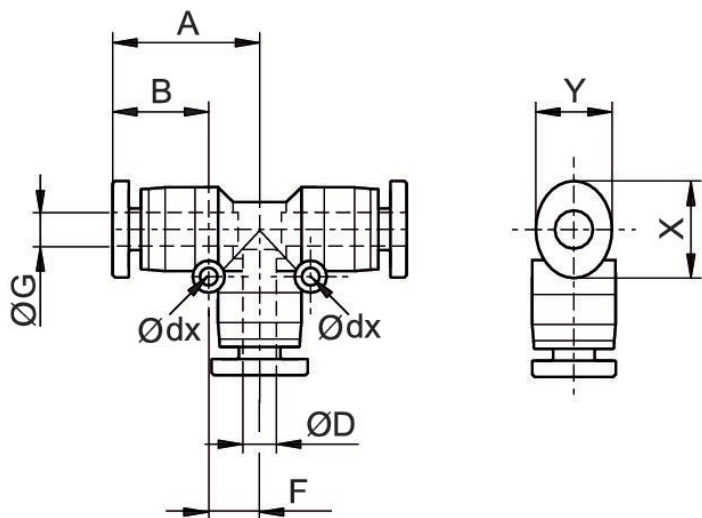
**Series QR1-S-MTK Mini**

T-plug connector  
push-in fitting  
push-in fitting



G	Ø D	Delivery unit [piece]	Part No.
Ø 3	Ø 3	25	R412005426
Ø 4	Ø 4	25	R412005427
Ø 6	Ø 6	25	R412005428

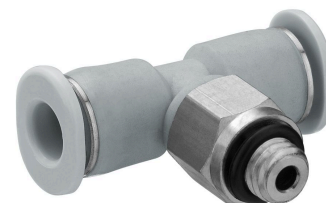
Dimensions



Part No.	Port D	Port G	Ø dx	A	B	F	X	Y
R412005426	Ø 3	Ø 3	3.2	11.4	9.5	4.5	7	6
R412005427	Ø 4	Ø 4	3.2	13.9	11.5	5.8	10	8
R412005428	Ø 6	Ø 6	3.2	15.4	12.5	6.5	12	10

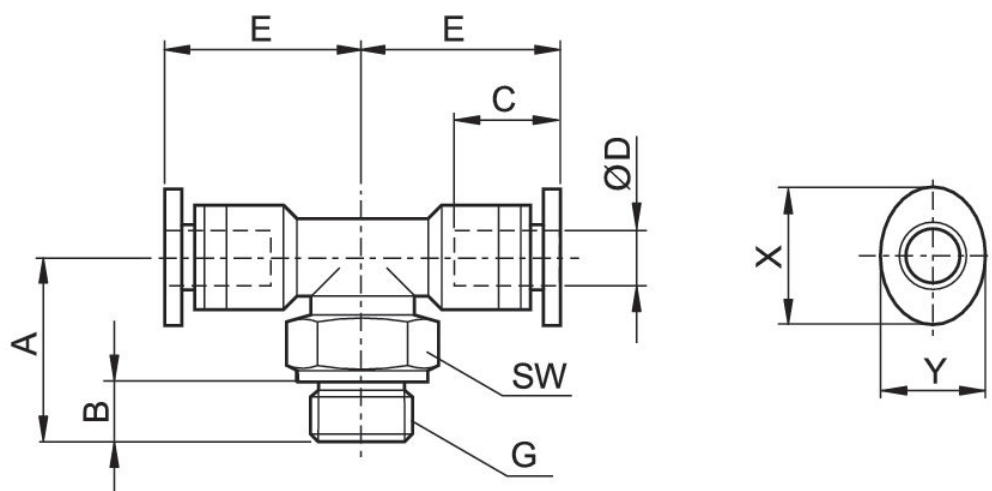
**Series QR1-S-MTT Mini**

T-union  
External thread  
push-in fitting



G	Ø D	Delivery unit [piece]	Part No.
M5	Ø 4	25	R412005395
M5	Ø 6	25	R412005396
G 1/8	Ø 4	25	R412005400
G 1/8	Ø 6	25	R412005401

Dimensions



Part No.	Port D	Port G	A	B	C	E	SW	X	Y
R412005395	Ø 4 M5 M5	M5	15	4	11.5	13.1	8	10	8
R412005396	Ø 6	M5	16	4	12.5	14.4	8	12	10
R412005400	Ø 4	G 1/8	13.4	5	11.5	13.1	12	10	8
R412005401	Ø 6	G 1/8	14.4	5	12.5	14.4	10	12	10



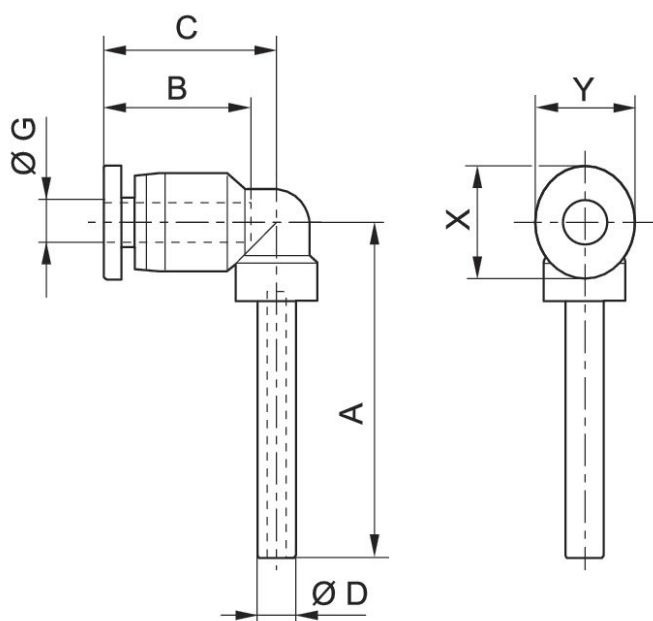
**Series QR1-S-MVA Mini**

Angled plug-in connector  
pin bushing  
push-in fitting



G	Ø D	Delivery unit [piece]	Part No.
Ø 3	Ø 3	25	R412005439
Ø 4	Ø 4	25	R412005440
Ø 6	Ø 6	25	R412005441

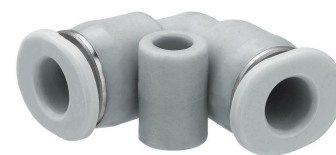
Dimensions



Part No.	Port D	Port G	A	B	C	X	Y
R412005439	Ø 3	Ø 3	21.6	9.5	11.2	7	6
R412005440	Ø 4	Ø 4	27.6	11.5	15.6	10	8
R412005441	Ø 6	Ø 6	29.6	12.5	16.9	12	10

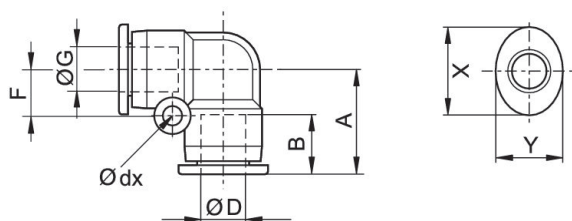
**Series QR1-S-MVK Mini**

Angled plug connector  
push-in fitting  
push-in fitting



G	Ø D	Delivery unit [piece]	Part No.
Ø 3	Ø 3	25	R412005423
Ø 4	Ø 4	25	R412005424
Ø 6	Ø 6	25	R412005425

Dimensions



Part No.	Port D	Port G	Ø dx	A	B	F	X	Y
R412005423	Ø 3	Ø 3	3.2	11.4	9.5	4.5	7	6
R412005424	Ø 4	Ø 4	3.2	13.9	11.5	5.8	10	8
R412005425	Ø 6	Ø 6	3.2	15.4	12.5	6.5	12	10

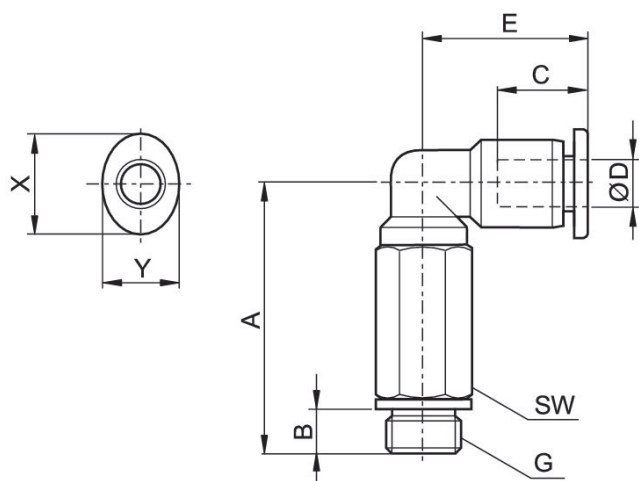
**Series QR1-S-MVL Mini**

Long elbow fitting  
External thread  
push-in fitting



G	Ø D	Delivery unit [piece]	Part No.
M3	Ø 3	25	R412005381
M3	Ø 4	25	R412005382
M5	Ø 4	25	R412005384
M5	Ø 6	25	R412005385
G 1/8	Ø 4	25	R412005390
G 1/8	Ø 6	25	R412005391

Dimensions



Part No.	Port D	Port G	A	B	C	E	SW	X	Y
R412005381	Ø 3	M3	19.4	3	9.5	11.2	6	7	6
R412005382	Ø 4	M3	23	3	11.5	15.6	8	10	8
R412005384	Ø 4	M5	26	4	11.5	15.6	8	10	8
R412005385	Ø 6	M5	26	4	12.5	16.9	8	12	10
R412005390	Ø 4	G 1/8	25.1	5	11.5	15.6	10	10	8
R412005391	Ø 6	G 1/8	26.4	5	12.5	16.9	10	12	10

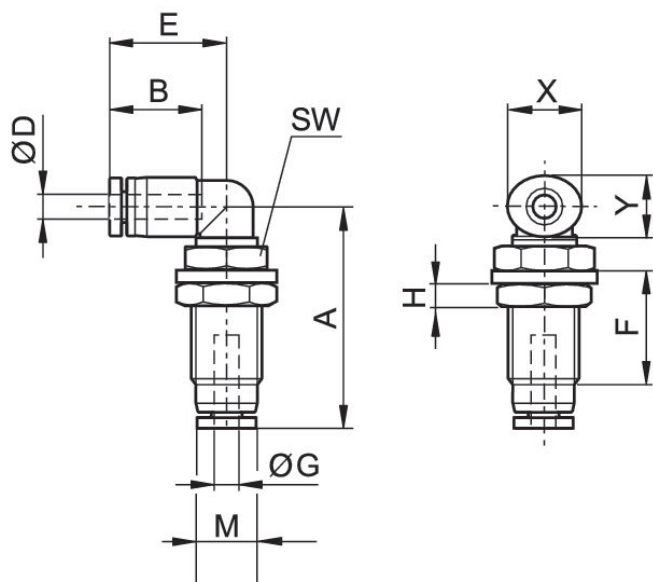
**Series QR1-S-MVS Mini**

Angled bulkhead connector  
push-in fitting  
push-in fitting



G	Ø D	Delivery unit [piece]	Part No.
Ø 4	Ø 4	25	R412005421
Ø 6	Ø 6	25	R412005422

Dimensions



Part No.	Port D	Port G	M	A	B	E	F	H	SW	X
R412005421	Ø 4	Ø 4	M10x1,0	24.4	11.5	15.3	13	3	12	10
R412005422	Ø 6	Ø 6	M12x1,0	31.5	12.5	16.3	16.6	4	14	12

Part No.	Y
R412005421	8
R412005422	10

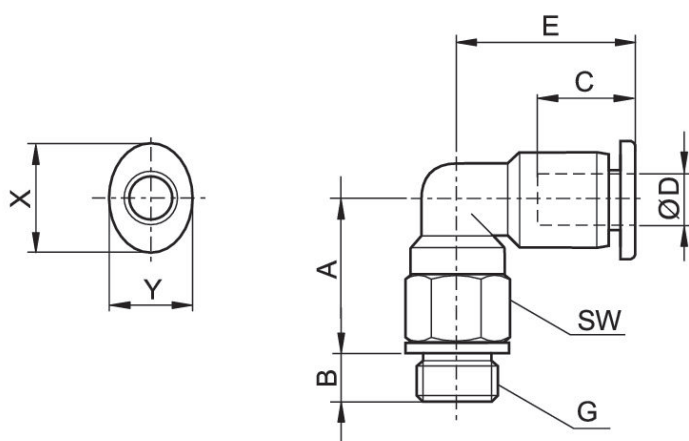
**Series QR1-S-MVT Mini**

Elbow fitting  
External thread  
push-in fitting



G	Ø D	Delivery unit [piece]	Part No.
M3	Ø 3	25	R412005284
M3	Ø 4	25	R412005285
M5	Ø 3	25	R412005286
M5	Ø 4	25	R412005287
M5	Ø 6	25	R412005288
M6	Ø 3	25	R412005289
M6	Ø 6	25	R412005627
M6	Ø 4	25	R412005628
M7	Ø 4	25	R412005377
M7	Ø 6	25	R412005378
G 1/8	Ø 4	25	R412005379
G 1/8	Ø 6	25	R412005380

Dimensions



Part No.	Port D	Port G	A	B	C	E	SW	X	Y
R412005284	Ø 3	M3	10.4	3	9.5	11.2	6	7	6
R412005285	Ø 4	M3	12	3	11.5	15.6	8	10	8
R412005286	Ø 3	M5	11.3	3.5	9.5	11.2	8	7	6

Part No.	Port D	Port G	A	B	C	E	SW	X	Y
R412005287	Ø 4	M5	11.6	3.5	11.5	15.6	8	10	8
R412005288	Ø 6	M5	12.9	3.5	12.5	16.9	8	12	10
R412005289	Ø 3	M6	11.9	4.5	9.5	11.2	8	7	6
R412005628	Ø 4	M6	11.6	4.5	12.5	15.6	8	12	10
R412005627	Ø 6	M6	12.9	4.5	11.5	16.9	10	10	8
R412005377	Ø 4	M7	13.7	5.5	11.5	15.6	8	10	8
R412005378	Ø 6	M7	15	5.5	12.5	16.9	8	12	10
R412005379	Ø 4	G 1/8	12.6	5	11.5	15.6	12	10	8
R412005380	Ø 6	G 1/8	17	5	12.5	16.9	10	12	10

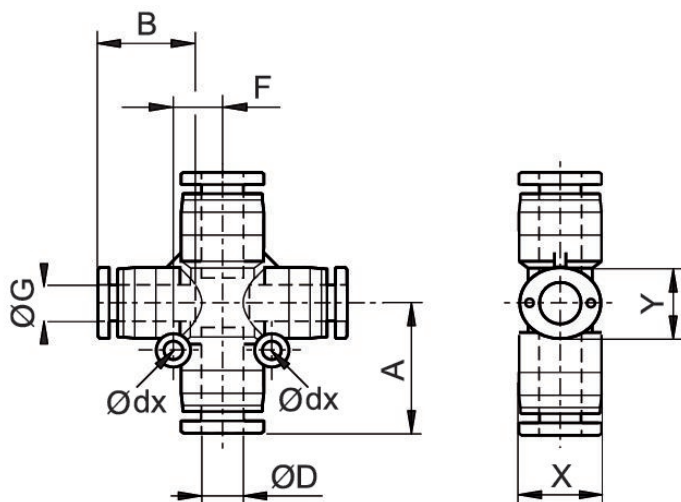
**Series QR1-S-MXS Mini**

X-Plug connection  
push-in fitting  
push-in fitting



G	Ø D	Delivery unit [piece]	Part No.
Ø 4	Ø 4	25	R412005435
Ø 6	Ø 6	25	R412005436

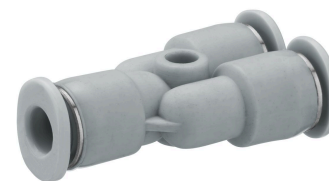
Dimensions



Part No.	Port D	Port G	Ø dx	A	B	F	X	Y
R412005435	Ø 4	Ø 4	3.2	13.6	11.5	5.5	10	8
R412005436	Ø 6	Ø 6	3.2	15.9	12.5	6.5	12	10

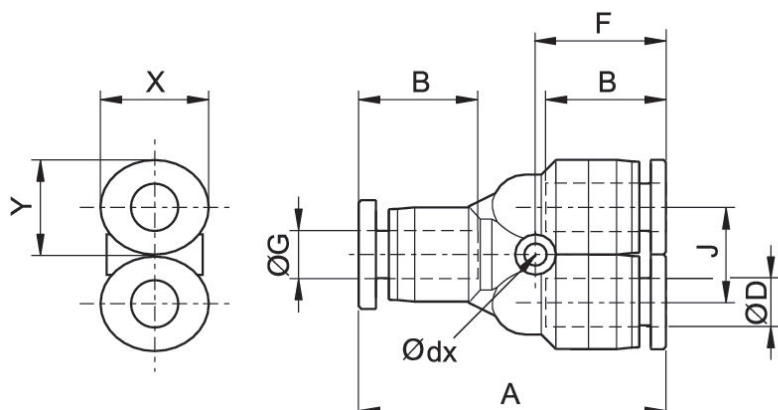
**Series QR1-S-MYK Mini**

Y - Plug connection  
push-in fitting  
push-in fitting



G	Ø D	Delivery unit [piece]	Part No.
Ø 3	Ø 3	25	R412005429
Ø 4	Ø 4	25	R412005430
Ø 6	Ø 6	25	R412005431

Dimensions

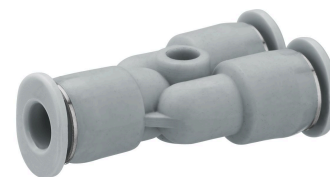


Part No.	Port D	Port G	Ø dx	A	B	F	J	X	Y
R412005429	Ø 3	Ø 3	3.2	29.9	9.5	13.2	8	7	6
R412005430	Ø 4	Ø 4	3.2	30.1	11.5	13.3	8	10	8
R412005431	Ø 6	Ø 6	3.2	32.1	12.5	13.6	10.5	12	10



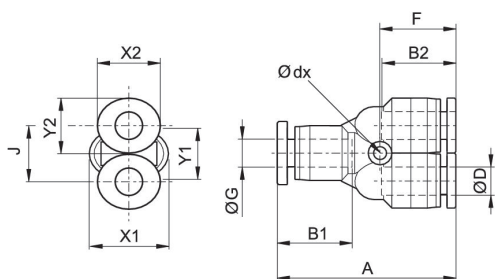
**Series QR1-S-MYR Mini**

Y-Plug connector, reducing  
push-in fitting  
push-in fitting



G	Ø D	Delivery unit [piece]	Part No.
Ø 4	Ø 3	25	R412005432
Ø 6	Ø 4	25	R412005433

Dimensions



Part No.	Port D	Port G	Ø dx	A	B1	B2	F	J	X1	X2
R412005432	Ø 3	Ø 4	3.2	30	11.5	9.5	13.4	8	10	7
R412005433	Ø 4	Ø 6	3.2	31.5	12.5	11.5	13.6	10.5	12	10

Part No.	Y1	Y2
R412005432	8	6
R412005433	10	8

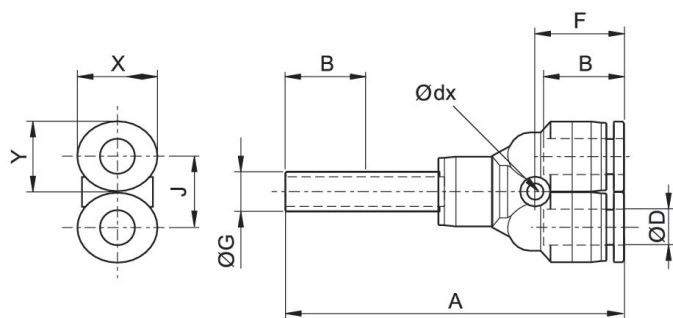
**Series QR1-S-MYZ Mini**

Y - Push-in fitting  
pin bushing  
push-in fitting



G	Ø D	Delivery unit [piece]	Part No.
Ø 4	Ø 4	25	R412005443
Ø 6	Ø 6	25	R412005444

Dimensions



Part No.	Port D	Port G	Ø dx	A	B	F	J	X	Y
R412005443	Ø 4	Ø 4	3.2	45	11.5	13.3	8	10	8
R412005444	Ø 6	Ø 6	3.2	50.5	12.5	13.6	10.4	12	10

# Efficient pneumatic solutions, our program: cylinders and drives, valves and valve systems, air supply management



Visit us: [Emerson.com/Aventics](https://www.emerson.com/Aventics)

Your local contact: [Emerson.com/contactus](https://www.emerson.com/contactus)



[Emerson.com](https://www.emerson.com)



[Facebook.com/EmersonAutomationSolutions](https://www.facebook.com/EmersonAutomationSolutions)



[LinkedIn.com/company/Emerson-Automation-Solutions](https://www.linkedin.com/company/Emerson-Automation-Solutions)



[Twitter.com/EMR\\_Automation](https://twitter.com/EMR_Automation)

An example configuration is depicted on the title page. The delivered product may thus vary from that in the illustration. Subject to change. This Document, as well as the data, specifications and other information set forth in it, are the exclusive property of AVENTICS GmbH. It may not be reproduced or given to third parties without its consent. Only use the AVENTICS products shown in industrial applications. Read the product documentation completely and carefully before using the product. Observe the applicable regulations and laws of the respective country. When integrating the product into applications, note the system manufacturer's specifications for safe use of the product. The data specified only serve to describe the product. No statements concerning a certain condition or suitability for a certain application can be derived from our information. The information given does not release the user from the obligation of own judgment and verification. It must be remembered that the products are subject to a natural process of wear and aging.

The Emerson logo is a trademark and service mark of Emerson Electric Co. Brand logotype are registered trademarks of one of the Emerson family of companies. All other marks are the property of their respective owners. © 2019 Emerson Electric Co. All rights reserved.



**CONSIDER IT SOLVED™**

# **FLUID POWER SOLUTIONS**<sup>®</sup>

**Find a location near you!**



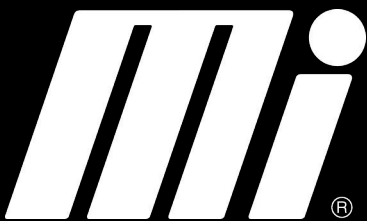
## **Mi Fluid Power Solutions**

Looking for specialized solutions for fluid power operations? Talk to the experts at Mi Fluid Power Solutions for expertise related to hydraulic power units, gearbox, and cylinder repair.

To view locations, scan QR Code or go to: [qrco.de/bd4Ofp](https://qrco.de/bd4Ofp)



© 2022 Motion



**MORE CHOICES. MORE INVENTORY. MORE EXPERTISE.**