

REPAIR & SERVICES

NOPAK-DESIGNED CYLINDERS

SPECIFICATIONS WITH SAME-DAY, 24-48 HOUR DELIVERY

Description & Type	Class 6 - Air	Class 6 - Intermediate Pressure Hydraulic	Class 3 - Heavy Duty Hydraulic**
Maximum Pressure	250 psi	1,500 psi*	3,000 psi
Bores	1.50" - 10.00"	1.50" - 10.00"	1.50" - 8.00"
Strokes	Up to 72"	Up to 72"	Up to 72"
Rod Diameters	5/8" through 2.50"	5/8" through 2.50"	5/8" through 4.50"
Porting	NPTF	NPTF	SAE or NPTF
Mountings	MF1, MF2, MP1, MP2, MS2, MS4, MT1, MT2, MT4, MX1, MX2, MX3	MF1, MF2, MP1, MP2, MS2, MS4, MT1, MT2, MT4, MX1, MX2, MX3	MF1, MF2, MP1, MP2, MS2, MS4, MT1, MT2, MT4, MX1, MX2, MX3

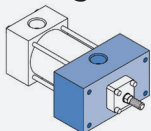
*Dependent on Mounting: check bore, rod, and mounting pressure chart for rating

**Cushions are standard

MOUNTINGS AVAILABLE

Full Head Rectangular Flange

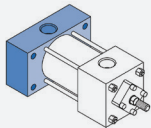
ME5



Model G

Full Cap Rectangular

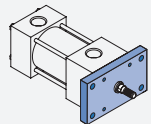
ME6



Model J

Head Rectangular Flange

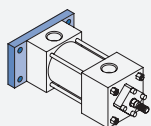
MF1



Model D

Cap Rectangular Flange

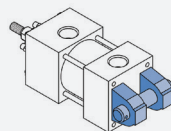
MF2



Model C

Fixed Clevis

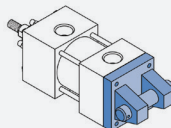
MP1



Model E

Detachable Clevis

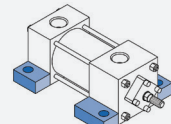
MP2



Model HE

Side Lugs

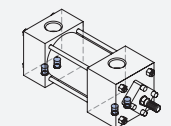
MS2



Model A

Side Tapped

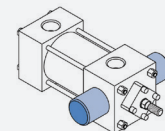
MS4



Model S

Head Trunion

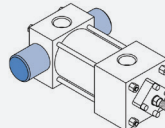
MT1



Model FR

Rear Trunion

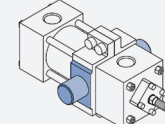
MT2



Model FB

Intermediate Fixed Trunion

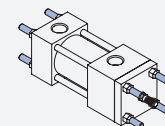
MT4



Model F

Tie Rods Extended

**MX1/MX2/
MX3/MX4**



Model T, TB, TR