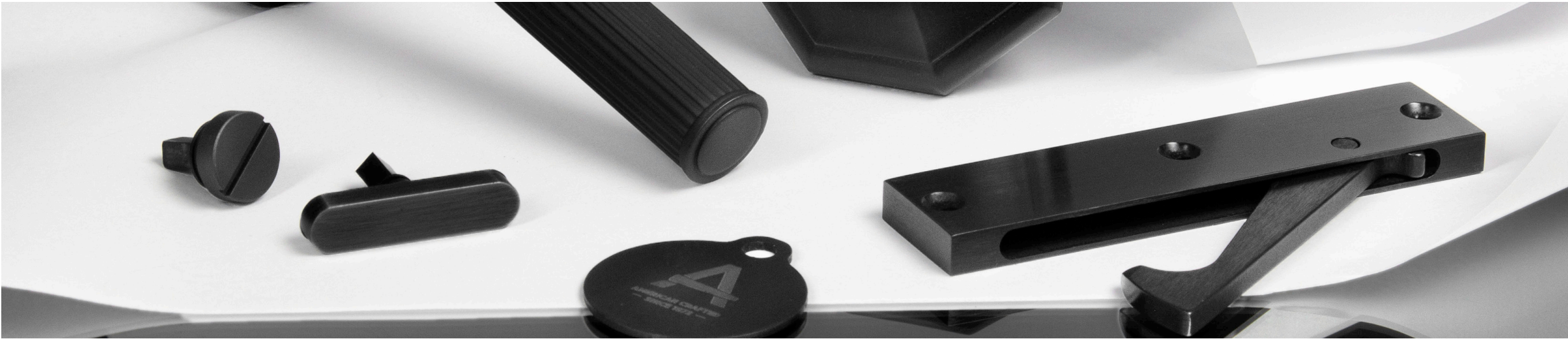




ACCURATE
LOCK & HARDWARE
AMERICAN CRAFTED SINCE 1972

2023
DIGITAL LOOKBOOK

FOR OVER HALF A CENTURY,
ACCURATE LOCK & HARDWARE
HAS BEEN DEDICATED TO
PROVIDING THE FINEST
AMERICAN-MADE LOCKS AND
HARDWARE SOLUTIONS.



THE SPEED OF INNOVATION

2022 represented the culmination of 50 years of hard work and dedication that has made Accurate Lock and Hardware the leader in custom architectural hardware and a trusted partner to so many luxury brands and niche markets. Whether custom made or from one of the many existing product categories that we offer, Accurate has always focused on solving unique problems in the industry and producing our own products from concept to execution.



Thom Filicia for Accurate Aurora Privacy Set

In a matter of days, a solid bar of brass can evolve into a component, a lock case, a cabinet pull, or a beautiful lever. Passing through the many hands of each department, extreme care is given to shape the metal into its next stage of life — whether it be form or function. From decorative trim designed by Thom Filicia to innovating in the Behavioral Healthcare space, we have built a team and facility that crafts best in class products for every opening.

On the custom and bespoke end of the spectrum, here are a few of the more exciting things we have done this year.

- + Electrified a ~100 year old rim lock
- + 15 1/2" backset electrified mortise lock
- + 48" custom ladder pulls,
- + Electrified Harmon Hinges
- + Custom Oversized Knob + Rose
- + Custom Offset Pivot Hinges



FROM TOP, CLOCKWISE: Custom 7" Centre Knob + Rose, Electrified Harmon Hinge, Electrified Antique Rim Lock

Outstanding customer service and delivery remain the key to our ongoing success. We have added resources on the service and support side of the business, including additional engineers trained to use the most modern design and development tools. We continue to invest by adding capital equipment, expanding our production footprint and increasing our warehouse space. All of this positions Accurate to leverage the most modern tools and machining technology backed by the spirit of old-world craftsmanship.



CH-CYL Crescent Cylindrical Sets

Accurate offers expanded Rapid Ship programs committing to immediate delivery of a variety of products including ADA Sliding Door Sets, Harmon Hinges, Pocket Door Sets, Light Duty Pivot Hinges, Electromechanical Lock and Trim Sets. We are proud to be 100% made in the USA and our vertically integrated manufacturing has allowed us to navigate the global supply chain better than most. We expect to continue to beat industry standards and improve our own lead times this year.



Family owned and operated by the Salvatore family.

Accurate innovates based on the feedback and requests of our most valuable assets — our trusted partners and customers. Please let us know if there is anything you would like to see in the market that either doesn't currently exist or needs improvement. We are always up for the challenge and as always "If you can dream it, we can make it". At our very core is our commitment to innovation in all aspects of door hardware — Accurate thrives on offering catalog and custom bespoke solutions across the hardware industry. We are proud to present some of our latest innovations...

Ronald M. Salvatore
FOUNDER + CHAIRMAN

Reed M. Salvatore
CEO

Rodd M. Salvatore
VICE PRESIDENT

FAMILY OWNED
& OPERATED



Right Image | Left: Rodd M. Salvatore Center: Ronald M. Salvatore Right: Reed M. Salvatore

MAGNETIC LATCH
FOR ENTRY *AND* INTERIORS THE POWER OF A RARE-EARTH MAGNET



Left: g100ML Magnetic Latch, Jay Jeffers for Access by Accurate Buckhead in US10B. **Right:** g500ML Magnetic Latch, Thom Filicia for Accurate Aurora Tapered Lever, Concave Round Rose in US19LL.M. **Right:** g800ML Magnetic Latch, Jay Jeffers for Access by Accurate Tribeca in US3.



IT'S WHAT YOU
CAN'T SEE

INVISIBLE DETAILS
PROVIDE SECURITY
WITHOUT
DISTRACTION.



Top Left: g100ML Entry Magnetic Latch, Jay Jeffers for Access by Accurate Buckhead in US10B.
Top Right: Outside. **Bottom Left:** Inside. **Bottom Right:** Inside.



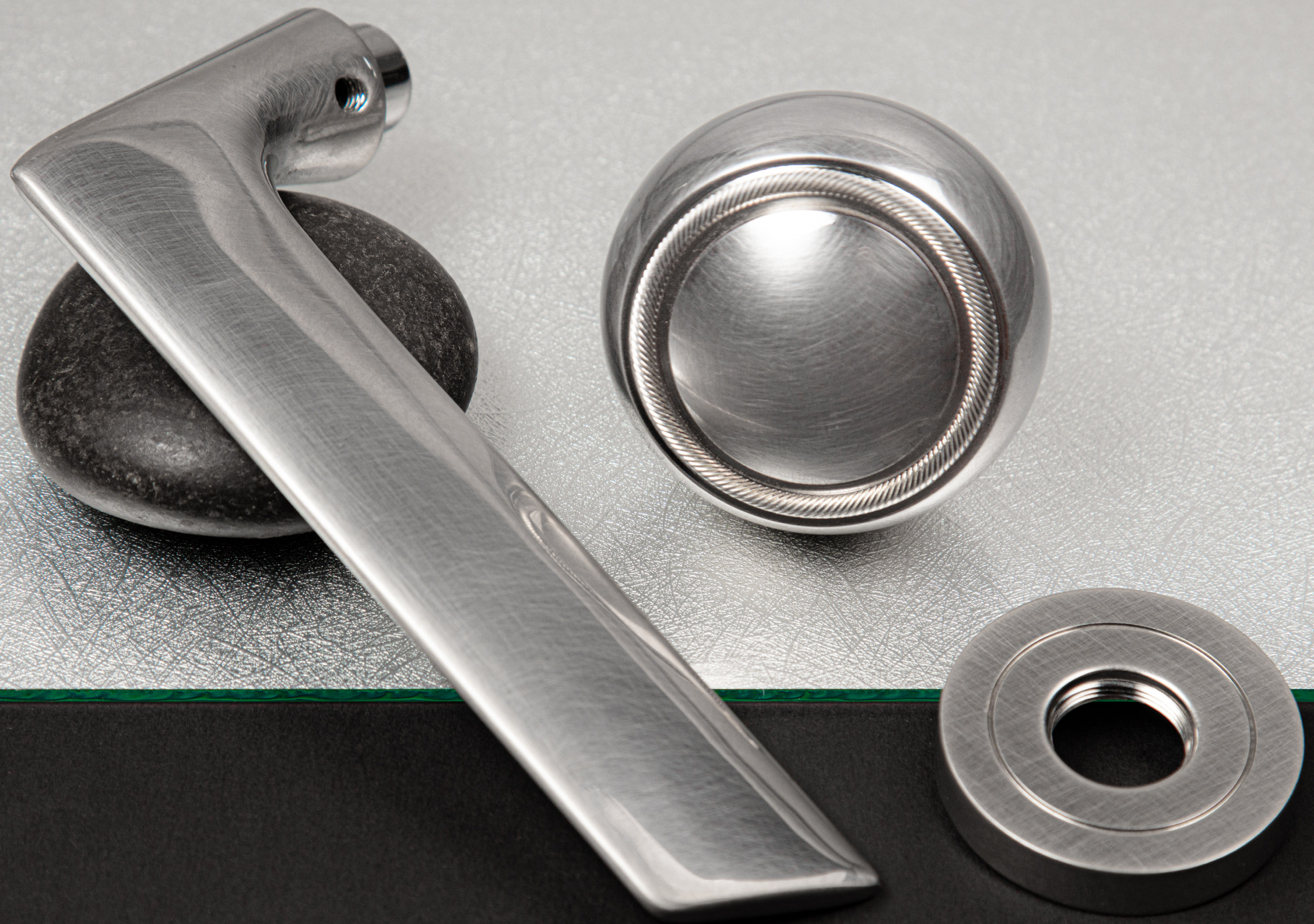
A SEAMLESS DOORWAY TO COMPLEMENT THE MOST DISCERNING DESIGN VISION

A POWERFUL,
RARE-EARTH MAGNET
PROJECTS THE LATCH
BOLT TO SECURE THE
DOOR WITH NO VISIBLE
STRIKE.



Left: 9800ML Interior Magnetic Latch with Jay Jeffers for Access by Accurate Tribeca in US3. **Top Right:** 9800ML Interior Magnetic Latch with Jay Jeffers for Access by Accurate Tribeca in US3. **Bottom Right:** Magnetic Strike in US3.

9500ML INTERIOR MAGNETIC LATCH
ALSO AVAILABLE



GLASS PATCH

HARDWARE *AND* LOCK SET STANDARD AND BESPOKE GLASS PATCH SOLUTIONS FOR OFFICES, COLLABORATIVE WORKSPACES, & BEYOND.



Left: 1700 Minimalistic Office Front Lockset with 17L/2R in ESN. **Center:**G17 Narrow Backset Glass Patch Set with 18L in US19, G-CYL Universal Cylindrical Glass Patch, G87 in ESN. **Right:** G87 Glass Patch Hardware Set with Thom Filicia for Accurate Henderson Round Lever in US19.



SOUND PROOF
SPACES WITHOUT
CREATING ANY
VISUAL BARRIERS

GR86 | DESIGNED FOR
OFFSET ON GLASS
APPLICATIONS WITH
PRIVACY GASKETING.



Left: GR86 Rabbeted Glass Patch Mortise Set with 18L in US19. **Top Left:** G-CYL-NDE Cylindrical Glass Patch for Schlage® NDE Series Wifi Lock. **Top Right:** G-ML-LE Glass Patch for Schlage® LE Series Wifi Mortise Lock. **Bottom Left:** G-ML Universal Mortise Glass Patch in US19. **Bottom Right:** G-CYL Universal Cylindrical Glass Patch.

GLASS DOORS
ALLOW A *DEEPER*
CONNECTION
TO SPACE &
NATURAL LIGHT





SPACE SAVING & WELCOMING AESTHETIC

SLIDING DOORS
ENSURE PRIVACY AND
SECURITY, WHILE
MAINTAINING AN
OPEN DESIGN.



Left: GS87 Glass Patch Mortise Sets for Sliding Doors with 72L in US19. **Top Right:** G2002 Pocket Door Glass Patch in ESN. **Bottom Right:** GS87 Glass Patch Mortise Sets for Sliding Doors with 72L in US19.





HANGING
DOORS
WITH THE
LAWS OF
PHYSICS.

ELEVATE THE SIMPLE TASK OF HANGING A DOOR.



Open Pivot Door with Custom Pull

**ELIMINATE
ANY GAP**

STANDARD AND
TRADITIONAL
STYLES FOR
RABBETED
DOOR JAMBS



Left: g100 Mortise Lock with Standard Rabbeted Kit **Right:** Rabbeted Strike with Thom Filicia for Accurate Henderson Knob and Rectangular Escutcheon



AN ELEGANT, CRISP & SEAMLESS CLOSURE

DESIGNED FOR INTERIOR
DOOR OPENINGS THAT
FEATURE A RECESS OR
GROOVE CUT INTO THE
WOOD FOR MAXIMUM
PRIVACY AND SECURITY.

9100 Mortise Lock with Traditional
Rabbeted Kit, Thom Filicia for
Accurate Henderson Knob with
Rectangular Escutcheon



SMARTENTRY™ by ACCURATE



Left: SL-SM9159E Self-Latching SmartEntry by Accurate with 19L/4R in US19LL.M. **Center:** SM9159E SmartEntry by Accurate with Jay Jeffers for Access by Accurate Beacon Hill Knob in US10B/US3. **Right:** SM9159E SmartEntry by Accurate with 5000TG Thumb Grip Entry Set in US15.



BEAUTY
AND
BRAINS



MOTOR DRIVE ELECTRIFIED MORTISE LOCKS

FEATURE UNIVERSAL
OUTPUT VOLTAGE AND
CAN EASILY BE CHANGED
FROM FAIL SECURE TO
FAIL SAFE TO ADAPT TO
DESIGN VARIATIONS.



Left: Mg134ELR Motor Drive Electrified Latch Retraction Mortise with Deadbolt, Custom Ladder Pulls in US15. **Top Left:** M1700E Motor Drive Electrified Narrow Backset Mortise Lock with 29L/2R in US15. **Top Right:** M8800ELR Motor Drive Electrified Latch Retraction Narrow Backset Mortise Lock. **Bottom Right:** Mg100E Motor Drive Electrified Mortise Lock with 19L/1R.



CREATE *MAXIMUM*
ARCHITECTURAL IMPACT.



Left: Open Harmon Hinge Door Application with FE158 Knife Edge Pull **Right:** Semi-Open Double Harmon Hinge Doors with 22DR Square Drop Ring Pull and FE158 Knife Edge Pulls

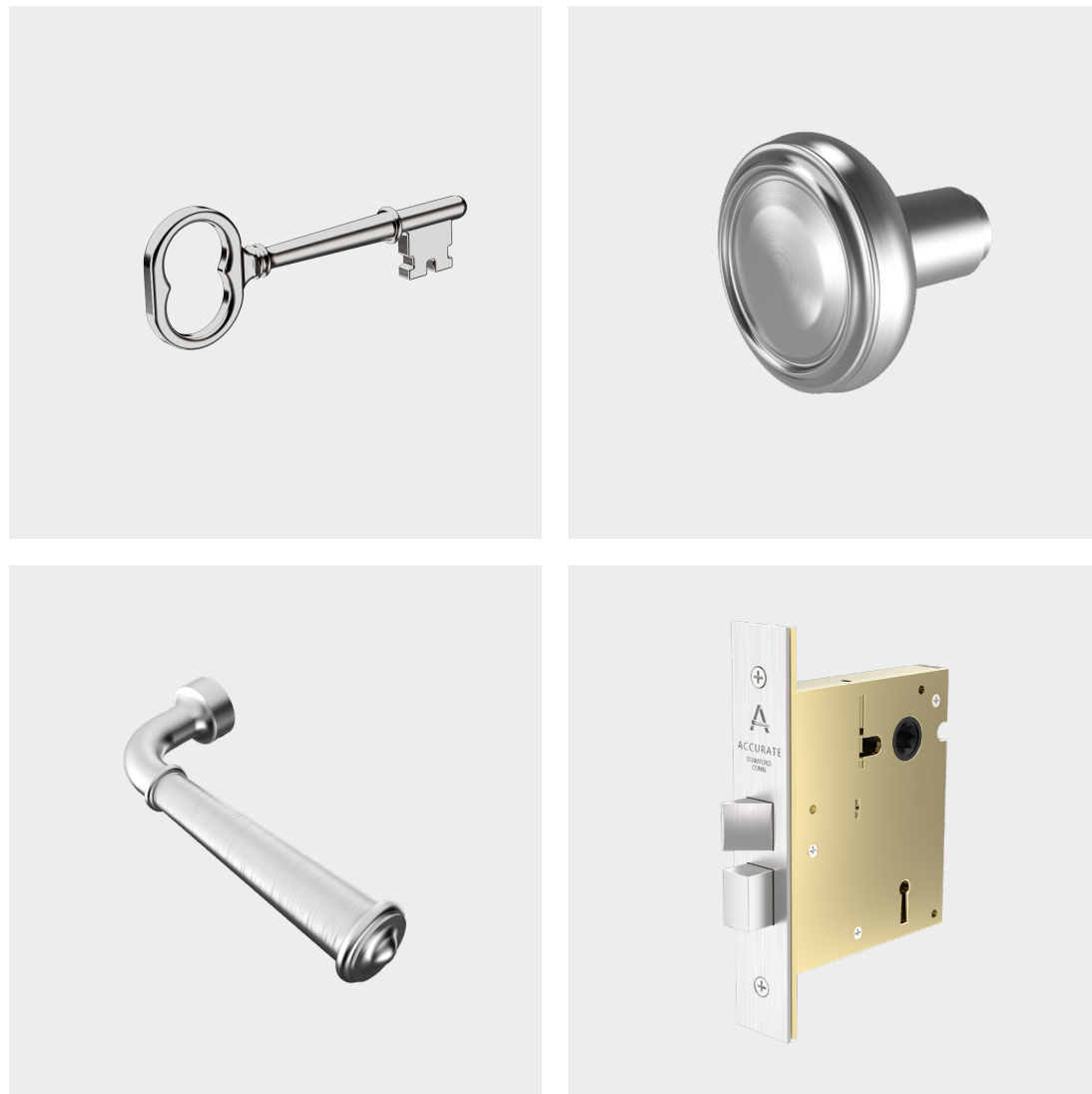


MAINTAIN A HISTORICAL AESTHETIC



Left: 9524 Bit Key Mortise Lock with 6Y York Lever/gT-K Traditional Bit Key Escutcheon.
Right: 9500BK Bit Key Deadlock with gR-BK Small Round Bit Key Rose

VINTAGE STYLE PAIRED WITH
MODERN LOCKING TECHNOLOGY



Right: 9524LLB Bit Key Deadlock, 6Y York Lever/gT-K Bit Key Traditional Escutcheon.
Top Left: 9-EK Bit Key. **Top Right:** 6R Redondo Knob. **Bottom Left:** 6Y York Lever.
Bottom Right: 9524 Bit Key Mortise Lock. Shown in US15.



TUBULAR LATCH

SIMPLE DESIGN WITH PREMIUM UPGRADES THE MOST DURABLE AND FEATURE-RICH PRODUCT IN ITS CLASS



TL2200 Tubular Latch with Thom Filicia for Accurate Granby Lever/Concave Round Rose in US19.



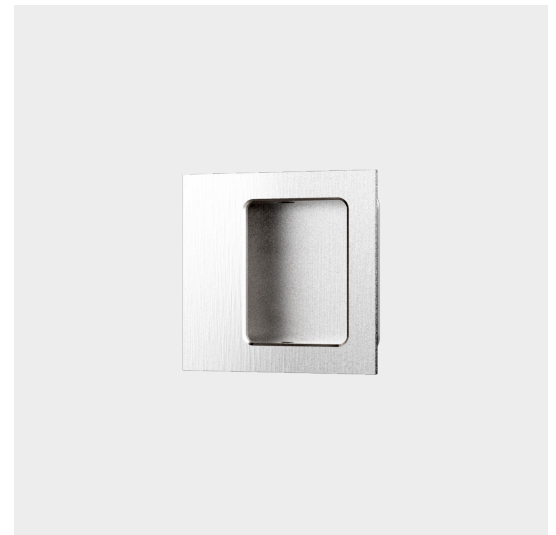
UTILIZING RARE-EARTH MAGNETS FOR SECURE & PRECISE INSTALLATION

OFFERING THE
SIMPLEST AND
CLEANEST SCREWLESS
INSTALLATION ON
THE MARKET.

Invisi-Mount Privacy Pocket Door Set in US19



POCKET + SLIDING DOOR HARDWARE SETS



Left: IS2002 Invisi-Mount Pocket Door Hardware Set in US4. **Top Left:** IA2002T Invisi-Mount Arched Flush Pull. **Top Right:** 2000 Pocket Door Edge Pull. **Bottom Left:** 2002CPDL Pocket Door Lock with Integrated Edge Pull, **Bottom Right:** FC2143 Square Flush Pull. Shown in US15.

ADDRESS BOTH TENSION AND LATCH PROJECTION
WITH ADJUSTABLE ROLLER LATCHES



Left: 8800ARL Narrow Bracket Adjustable Roller Latch Mortise Lock with Custom Flush Pull in US15. **Right:** 9100ARL Roller Latch Mortise Lock with Custom Pull in US19LL.M







DESIGNED WITH PATIENT CARE & STAFF SAFETY IN MIND

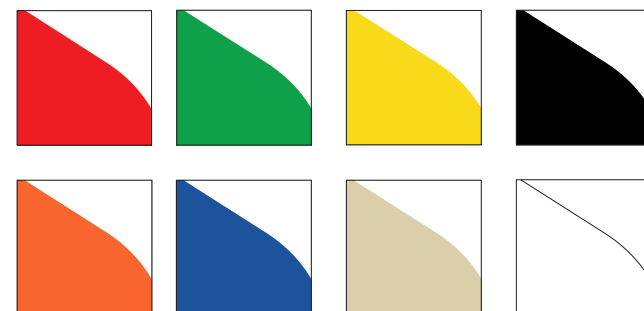
SETTING THE
INDUSTRY STANDARD
FOR BOTH SWINGING
AND SLIDING DOOR
APPLICATIONS.



Left: SC-LR-SDS Secure Cabinet
Ligature Resistant Sliding Door System
for Medical Gases. **Top Right:** CH
9100SEC High Security Crescent
Mortise Set. **Bottom Right:** CH-CYL
Crescent Cylindrical Set.

THE POWER OF PERSONALIZATION WITH A *POP* OF COLOR

MAKES A PLACE MORE INVITING
AND ALLOWS PATIENTS TO
DRAW ON THE DOOR WITH
MARKER FOR INTERACTIVITY.



Left: LR-SW Ligature Resistant Swinging Door System. **Top Left:** g100ALP Safety Push Pull Mortise Set. **Top Right:** LR-SDS Ligature Resistant Sliding Door System. **Bottom Left:** PV-ABH Anti-Barricade Hinge. **Bottom Right:** CH g100BL Crescent Beveled Safety Latch

ADA COMPLIANT HARDWARE THAT REQUIRES 'NO PINCH, NO GRASP'



Left: 2001ADAP Sliding Door Set in US15 (Inside) **Center:** Mg143ELR Motor Drive Electrified Latch Retraction Accessible Restroom Lock. **Right:** 2001ADAP Sliding Door Set in US15 (Outside).

Levers: 19L, 29L, 17L, 18L, 21L, 20L, 39L, 72L in US19

AGING IN PLACE CONCEPTUALIZED AND DESIGNED TO FACILITATE AND HUMANIZE THE EVERY DAY LIFE OF THE OLDER DEMOGRAPHIC



Left: SafeGlow by Accurate. **Center:** T2200 Tubular Latch. **Right:** Keyed Cylinder Assist.

CERAKOTE COLORS

PROTECT *AND* INSPIRE TRANSFORM ANY SPACE WITH A POP OF COLOR.



Left and Right: ADA Compliant Hardware in 100+ Colors





OPENING DOORS TO SOLVING PROBLEMS

WE FUSE MODERN
TECHNOLOGY
WITH OLD-WORLD
CRAFTSMANSHIP
TO CREATE CUSTOM
AND BESPOKE
HARDWARE TO
ALIGN WITH ANY
DESIGN VISION.

A variety of custom hardware shown in
US14 and US15 finishes.



MAKE A STATEMENT IN
BURNISHED BRASS + BLACK



Left: Thom Filicia for Accurate + Custom Hardware shown in BB. **Right:** g100 Mortise Lock in US19.





SILENT**PAC**[™]
by ACCURATE

SSSSSSSSSSHHHHHHHHUT THE DOOR



Left: SilentPac g100Q Quiet Mortise Lock with 19L/1R in US15. **Right:** SilentPac by Accurate g100Q Quiet Mortise Lock, SilentPac Lever Dampening Disc.



THOM FILICIA
FOR ACCURATE



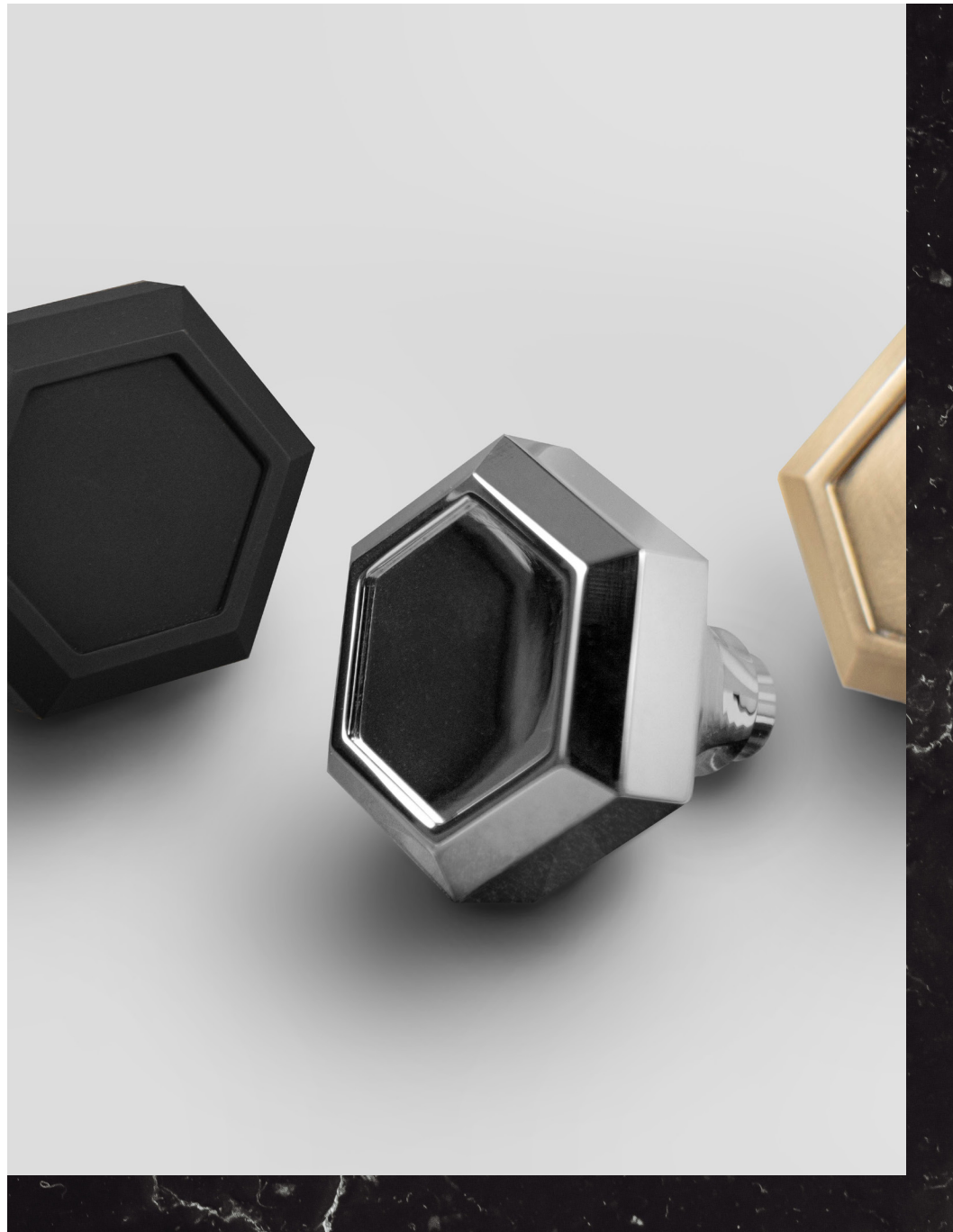
THOM FILICIA IS KNOWN FOR EFFORTLESSLY BLENDING CLASSIC FORMS WITH A MODERN SENSIBILITY TO CREATE PRODUCTS AND INTERIORS THAT ARE BOTH TIMELY AND TIMELESS.

Influenced by the worlds of architecture, design, art and lifestyle, the Thom Filicia for Accurate collection of hardware features an inspired combination of thoughtfully executed details. Pairing design with the industry's finest manufacturing technologies at Accurate Lock & Hardware, this collection features a strong & sophisticated mix of textures, finishes and materials available for a variety of openings.



Left: Henderson Octagonal Lever with Convex Rose in US15A.
Right: Henderson Knob in TN

ELEGANT, SMART, SEXY, AND SCULPTURAL
WITH THE QUALITY OF OLD-WORLD CRAFTSMANSHIP
FUSED WITH MODERN TECHNOLOGY



Left: Henderson Hexagonal Knobs in US19LL.M, US14, BB. **Top Right:** Carrera Knobs + Levers in BB and US19LL.G.





TEXTURE *PLAYS AGAINST* CLEAN LINES & MODERN MATERIALITY

A VARIETY OF KNOBS
AND LEVERS THAT
FEATURE TEXTURED
FACES INSPIRED BY
FILICIA'S TEXTILES
AND WALLCOVERING
COLLECTIONS.



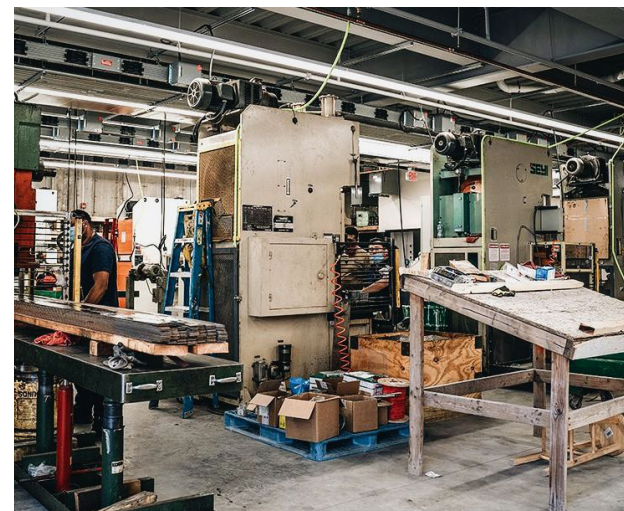
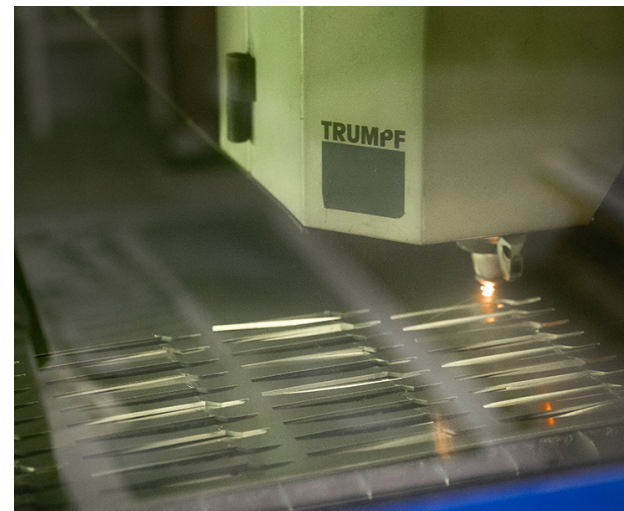
Left: Aurora Rectangular Lever with
Convex Round Escutcheon in BB/TB.
Top Right: Aurora Hexagonal Knob with
Hammered Insert in US1gLL.M/TB.
Bottom Right: Aurora Oval Knob with
Wallpaper Insert in US19.



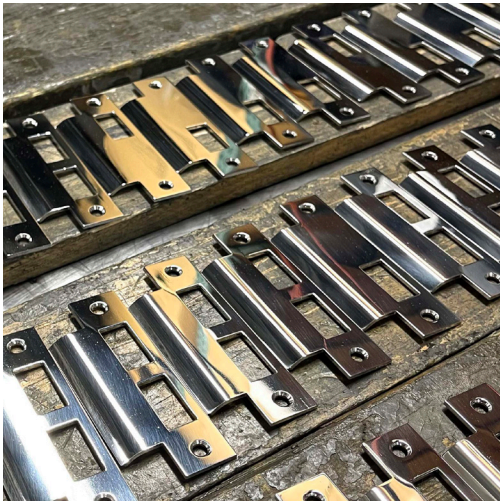
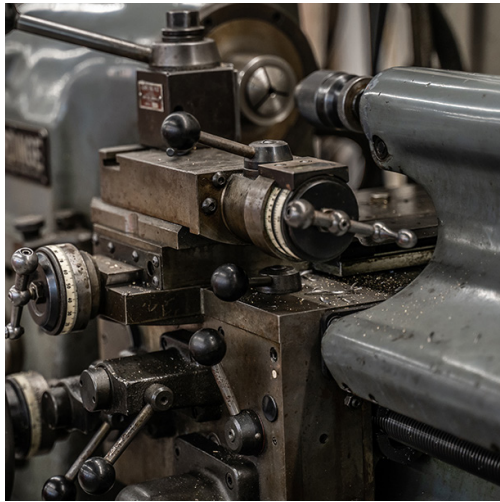
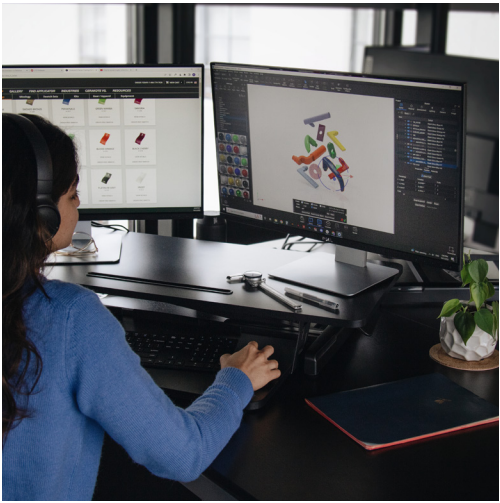
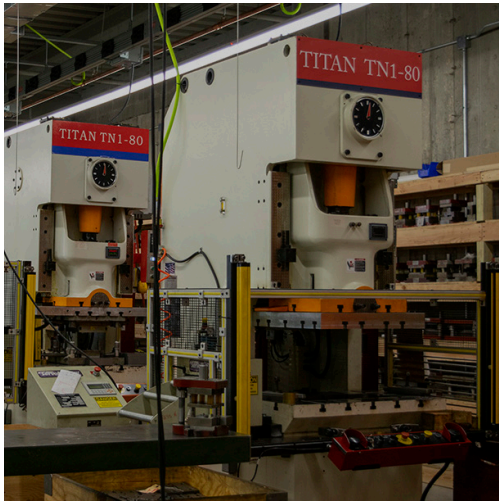
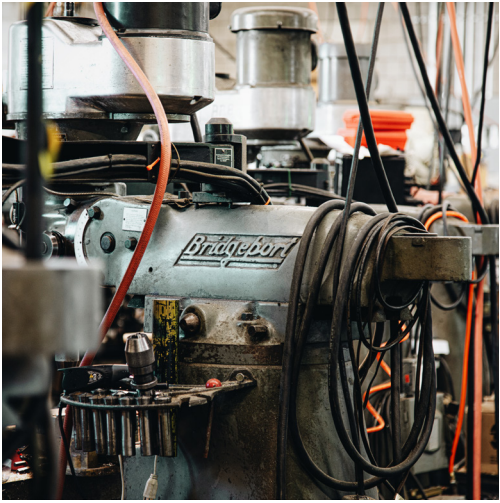
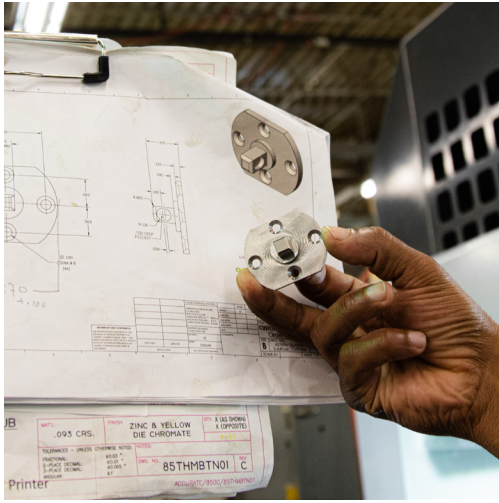


**FUSING OLD-WORLD
CRAFTSMANSHIP
WITH MODERN
TECHNOLOGY
TO CREATE
ARCHITECTURAL
HARDWARE
PRODUCTS OF
UNCOMPROMISING
QUALITY.**

FROM CONCEPT TO
MANUFACTURING, ALL ACCURATE
PRODUCTS ARE PROUDLY MADE
ENTIRELY IN THE USA.



#madeinusamonday





**"I LOVE THE FAMILY
ATMOSPHERE AND
BEING ABLE TO WORK
WITH THE ENGINEERS.
I ALSO LOVE BEING
ABLE TO BUILD
PRODUCTS FROM
START TO FINISH. IT'S
A GOOD FEELING TO
SEE A BLOCK OF STEEL
TRANSFORM INTO A
FINISHED PRODUCTS."**



EDWARD C.
TOOL & DIE STAMPING MANAGER
26 YEARS AT ACCURATE



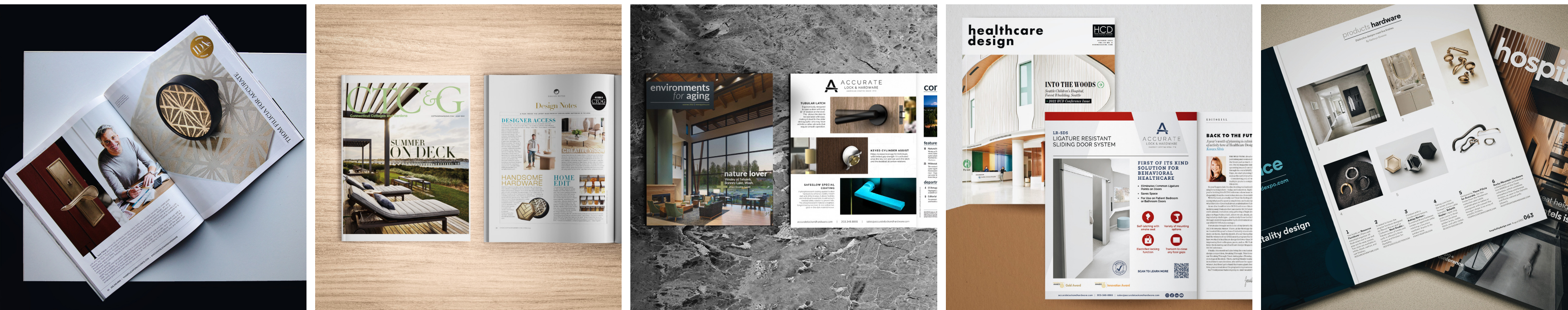
#featurefriday

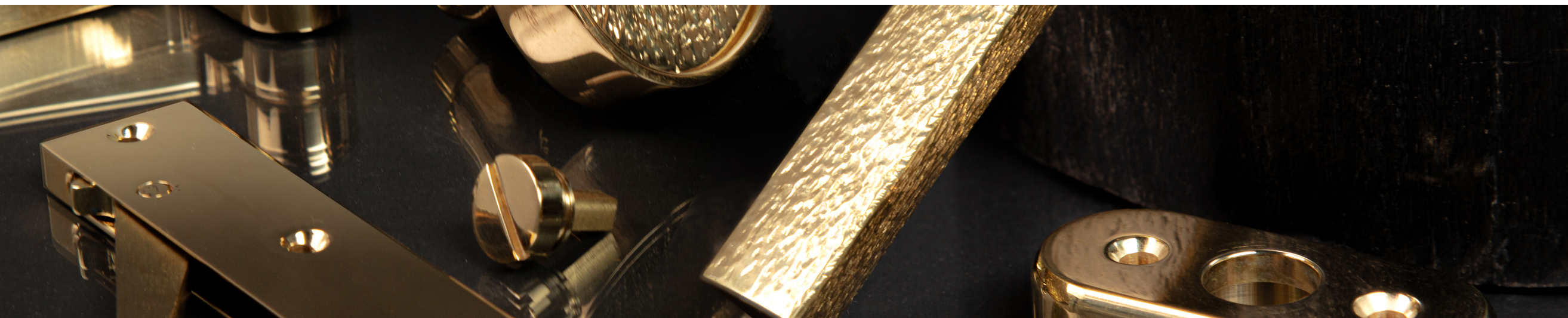




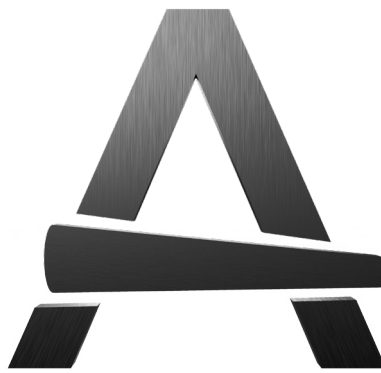
IN THE PRESS

PRODUCTS, SOLUTIONS & AWARDS FEATURED IN THE INDUSTRY'S BEST PUBLICATIONS





IF YOU CAN DREAM IT,
WE CAN MAKE IT



FOLLOW US ON SOCIAL MEDIA

Tag us with your installations **#accuratelockandhardware**